

Data Path : Z:\voasrv\HPCHEM1\MSVOA\_Y\Data\VY120421\  
 Data File : VY006939.D  
 Acq On : 04 Dec 2021 14:20  
 Operator : SY/MD  
 Sample : M4884-09  
 Misc : 3.19g/10.0mL/MSVOA\_Y/SOIL  
 ALS Vial : 13 Sample Multiplier: 1

Instrument :  
 MSVOA\_Y  
 ClientSampleId :  
 EW9J5

Quant Time: Dec 05 06:07:41 2021  
 Quant Method : Z:\voasrv\HPCHEM1\MSVOA\_Y\methods\SFAMYLEM120321SMA.M  
 Quant Title : VOC Analysis  
 QLast Update : Sat Dec 04 02:26:29 2021  
 Response via : Initial Calibration

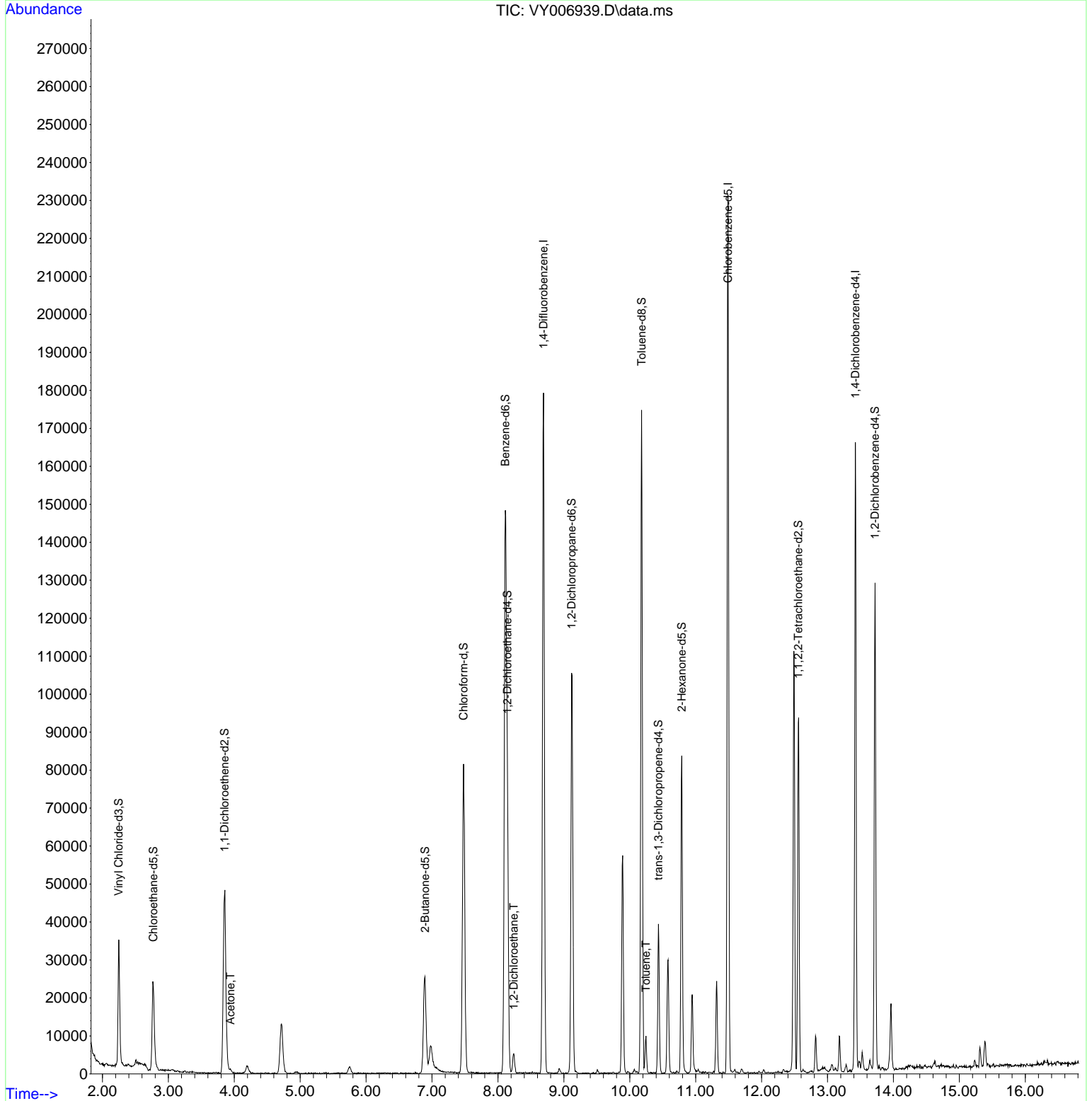
Compound	R.T.	QIon	Response	Conc	Units	Dev(Min)
-----						
Internal Standards						
1) 1,4-Difluorobenzene	8.691	114	144962	25.000	ug/L	0.00
28) Chlorobenzene-d5	11.489	117	118575	25.000	ug/L	0.00
58) 1,4-Dichlorobenzene-d4	13.422	152	40154	25.000	ug/L	0.00
System Monitoring Compounds						
4) Vinyl Chloride-d3	2.247	65	33817	18.113	ug/L	0.00
Spiked Amount	25.000	Range 30 - 150	Recovery =	72.440%		
7) Chloroethane-d5	2.771	69	29232	19.960	ug/L	0.00
Spiked Amount	25.000	Range 30 - 150	Recovery =	79.840%		
11) 1,1-Dichloroethene-d2	3.851	63	47902	12.342	ug/L	0.00
Spiked Amount	25.000	Range 45 - 110	Recovery =	49.360%		
21) 2-Butanone-d5	6.893	46	46875	65.005	ug/L	0.00
Spiked Amount	50.000	Range 20 - 135	Recovery =	130.000%		
24) Chloroform-d	7.478	84	78564	21.747	ug/L	0.00
Spiked Amount	25.000	Range 40 - 150	Recovery =	87.000%		
26) 1,2-Dichloroethane-d4	8.142	65	50805	23.429	ug/L	0.00
Spiked Amount	25.000	Range 70 - 130	Recovery =	93.720%		
32) Benzene-d6	8.112	84	137221	21.786	ug/L	0.00
Spiked Amount	25.000	Range 20 - 135	Recovery =	87.160%		
36) 1,2-Dichloropropane-d6	9.118	67	48619	24.567	ug/L	0.00
Spiked Amount	25.000	Range 70 - 120	Recovery =	98.280%		
41) Toluene-d8	10.179	98	110933	18.804	ug/L	0.00
Spiked Amount	25.000	Range 30 - 130	Recovery =	75.200%		
43) trans-1,3-Dichloroprop...	10.435	79	19534	20.407	ug/L	0.00
Spiked Amount	25.000	Range 30 - 135	Recovery =	81.640%		
47) 2-Hexanone-d5	10.788	63	26946	58.830	ug/L	0.00
Spiked Amount	50.000	Range 20 - 135	Recovery =	117.660%		
56) 1,1,2,2-Tetrachloroeth...	12.556	84	44008	26.692	ug/L	0.00
Spiked Amount	25.000	Range 45 - 120	Recovery =	106.760%		
66) 1,2-Dichlorobenzene-d4	13.721	152	31208	23.833	ug/L	0.00
Spiked Amount	25.000	Range 75 - 120	Recovery =	95.320%		
Target Compounds						
13) Acetone	3.942	43	1548	2.342	ug/L	95
27) 1,2-Dichloroethane	8.240	62	5017	1.747	ug/L	98
42) Toluene	10.246	91	6298	0.741	ug/L	99
-----						

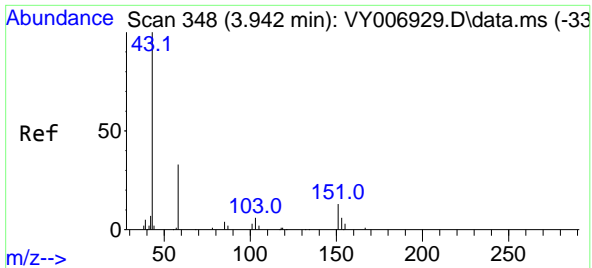
(#) = qualifier out of range (m) = manual integration (+) = signals summed

Data Path : Z:\voasrv\HPCHEM1\MSVOA\_Y\Data\VY120421\  
 Data File : VY006939.D  
 Acq On : 04 Dec 2021 14:20  
 Operator : SY/MD  
 Sample : M4884-09  
 Misc : 3.19g/10.0mL/MSVOA\_Y/SOIL  
 ALS Vial : 13 Sample Multiplier: 1

Instrument :  
 MSVOA\_Y  
 ClientSampleId :  
 EW9J5

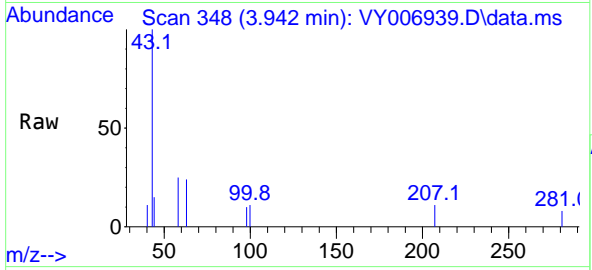
Quant Time: Dec 05 06:07:41 2021  
 Quant Method : Z:\voasrv\HPCHEM1\MSVOA\_Y\methods\SFAMYL120321SMA.M  
 Quant Title : VOC Analysis  
 QLast Update : Sat Dec 04 02:26:29 2021  
 Response via : Initial Calibration



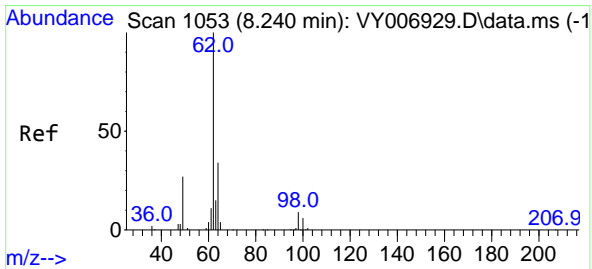
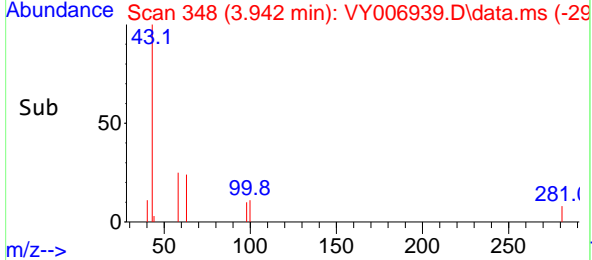
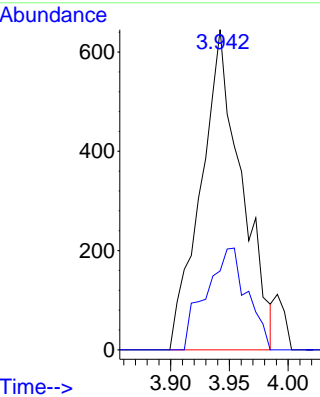


#13  
 Acetone  
 Concen: 2.342 ug/L  
 RT: 3.942 min Scan# 348  
 Delta R.T. -0.000 min  
 Lab File: VY006939.D  
 Acq: 04 Dec 2021 14:20

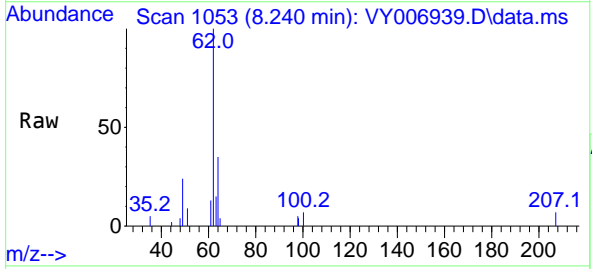
Instrument : MSVOA\_Y  
 ClientSampleId : EW9J5



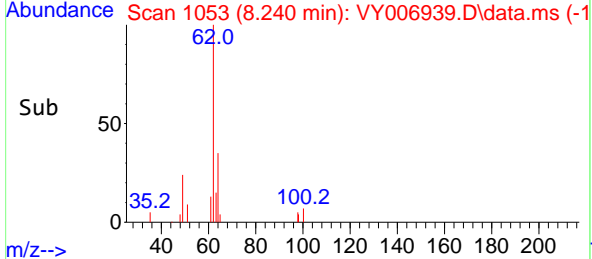
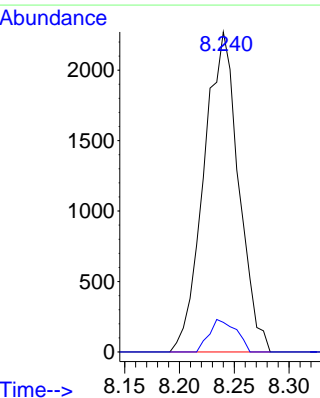
Tgt Ion: 43 Resp: 1548  
 Ion Ratio Lower Upper  
 43 100  
 58 27.7 0.0 60.8

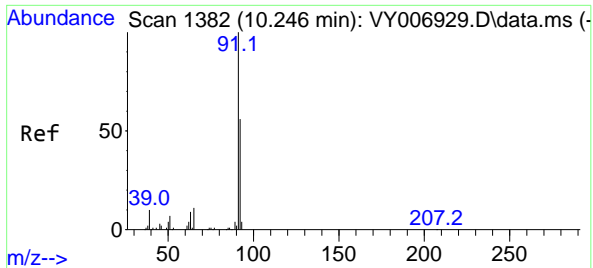


#27  
 1,2-Dichloroethane  
 Concen: 1.747 ug/L  
 RT: 8.240 min Scan# 1053  
 Delta R.T. -0.000 min  
 Lab File: VY006939.D  
 Acq: 04 Dec 2021 14:20



Tgt Ion: 62 Resp: 5017  
 Ion Ratio Lower Upper  
 62 100  
 98 9.2 6.9 10.3





#42  
 Toluene  
 Concen: 0.741 ug/L  
 RT: 10.246 min Scan# 11  
 Delta R.T. -0.000 min  
 Lab File: VY006939.D  
 Acq: 04 Dec 2021 14:20

Instrument : MSVOA\_Y  
 ClientSampleId : EW9J5

Tgt Ion: 91 Resp: 6298

Ion	Ratio	Lower	Upper
91	100		
92	57.9	39.8	74.0

