

Data Path : Z:\VOASRV\HPCHEM1\MSVOA Y\DATA\VY120519\
 Data File : VY000875.D
 Acq On : 05 Dec 2019 12:20
 Operator : SY/MD
 Sample : K6135-01RE
 Misc : 7.43G/5ML/MSVOA Y/SOIL
 ALS Vial : 6 Sample Multiplier: 1

Instrument :
 MSVOA_Y
 ClientSampled :
 VOC-34

Quant Time: Dec 06 04:00:03 2019
 Quant Method : Z:\VOASRV\HPCHEM1\MSVOA_Y\METHODS\82Y112719S.M
 Quant Title : SW846 8260
 QLast Update : Wed Nov 27 12:40:47 2019
 Response via : Initial Calibration

Internal Standards	R.T.	QIon	Response	Conc	Units	Dev(Min)
1) Pentafluorobenzene	7.80	168	237101	50.00	ug/l	0.00
34) 1,4-Difluorobenzene	8.69	114	439230	50.00	ug/l	0.00
63) Chlorobenzene-d5	11.49	117	374808	50.00	ug/l	0.00
72) 1,4-Dichlorobenzene-d4	13.42	152	137085	50.00	ug/l	0.00

System Monitoring Compounds

33) 1,2-Dichloroethane-d4	8.15	65	142563	56.59	ug/l	0.00
Spiked Amount	50.000		Recovery	=	113.18%	
35) Dibromofluoromethane	7.73	113	98186	38.36	ug/l	0.00
Spiked Amount	50.000		Recovery	=	76.72%	
50) Toluene-d8	10.18	98	521047	50.91	ug/l	0.00
Spiked Amount	50.000		Recovery	=	101.82%	
62) 4-Bromofluorobenzene	12.48	95	155667	40.50	ug/l	0.00
Spiked Amount	50.000		Recovery	=	81.00%	

Target Compounds

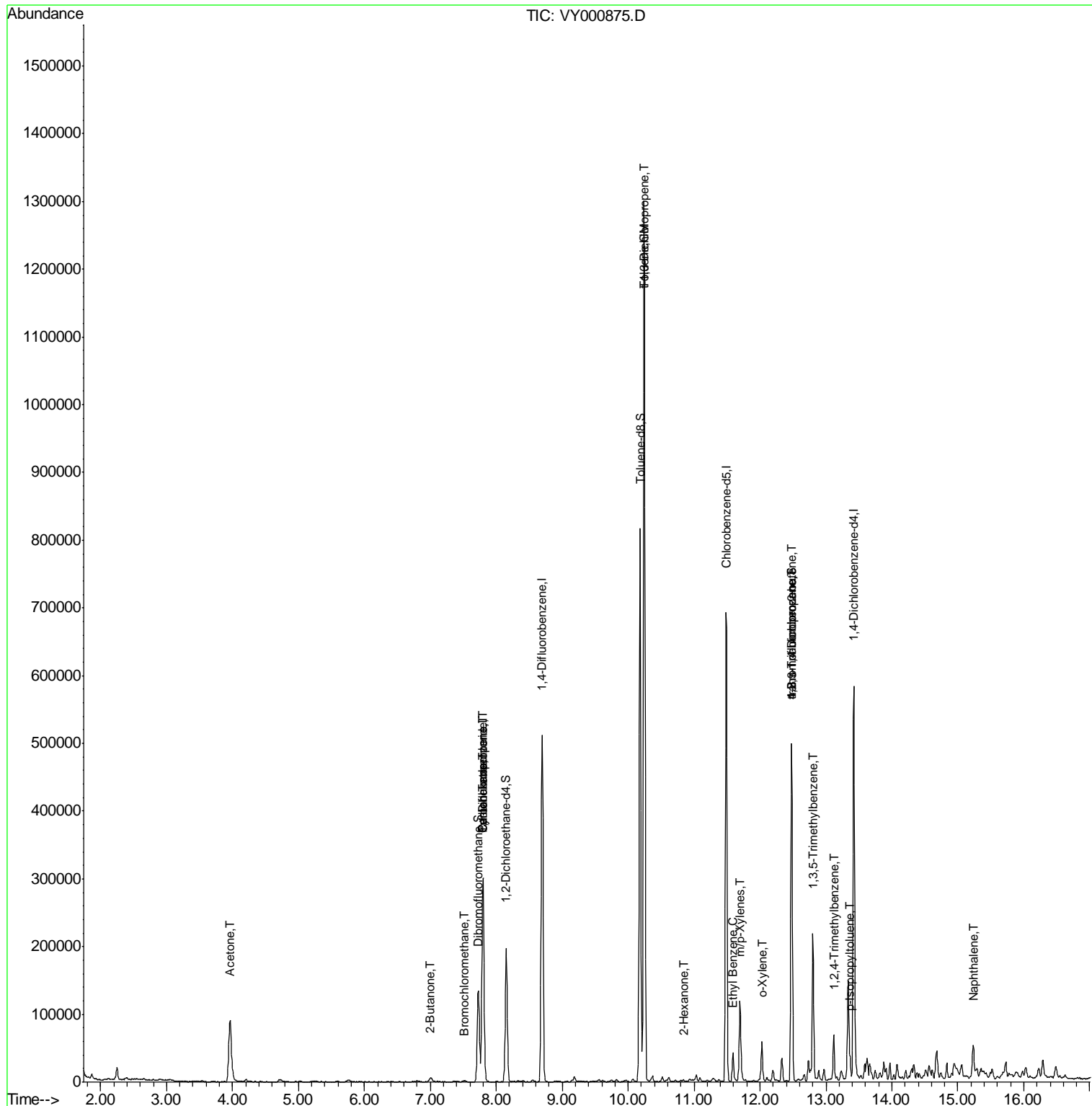
					Qvalue	
5) Bromomethane	2.68	94	270	Below Cal	#	65
16) Acetone	3.96	43	167065	289.066	ug/l	96
25) 2-Butanone	7.00	43	7636	7.152	ug/l	99
28) Bromochloromethane	7.51	49	68	2.051	ug/l #	15
31) Cyclohexane	7.79	56	6067	1.134	ug/l #	1
36) 1,1-Dichloropropene	7.80	75	19551	4.477	ug/l #	44
38) Carbon Tetrachloride	7.80	117	23093	5.938	ug/l #	13
52) Toluene	10.24	92	537219	68.207	ug/l	98
53) t-1,3-Dichloropropene	10.24	75	5856	1.390	ug/l #	1
59) 2-Hexanone	10.83	43	1863	1.041	ug/l	99
67) Ethyl Benzene	11.59	91	26591	1.833	ug/l	98
68) m/p-Xylenes	11.69	106	35642	6.544	ug/l	98
69) o-Xylene	12.03	106	13081	2.576	ug/l	95
76) 1,2,3-Trichloropropane	12.48	75	79865	51.421	ug/l #	100
80) 1,3,5-Trimethylbenzene	12.81	105	11961	1.324	ug/l	83
81) trans-1,4-Dichloro-2-buten	12.48	75	79865	101.006	ug/l #	18
84) 1,2,4-Trimethylbenzene	13.12	105	30704	3.396	ug/l	93
86) p-Isopropyltoluene	13.37	119	17385	1.809	ug/l #	77
95) Naphthalene	15.23	128	36848	5.617	ug/l	98

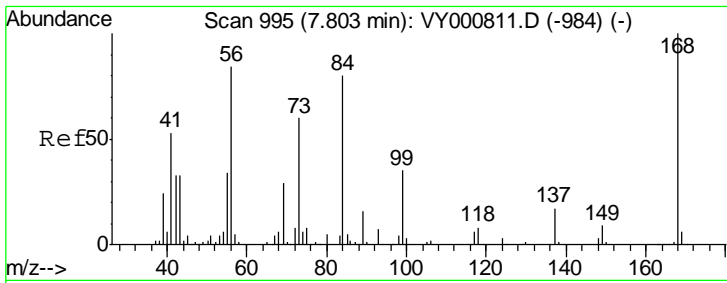
(#) = qualifier out of range (m) = manual integration (+) = signals summed

Data Path : Z:\VOASRV\HPCHEM1\MSVOA Y\DATA\VY120519\
 Data File : VY000875.D
 Acq On : 05 Dec 2019 12:20
 Operator : SY/MD
 Sample : K6135-01RE
 Misc : 7.43G/5ML/MSVOA Y/SOIL
 ALS Vial : 6 Sample Multiplier: 1

Instrument :
 MSVOA_Y
 Client Sampled :
 VOC-34

Quant Time: Dec 06 04:00:03 2019
 Quant Method : Z:\VOASRV\HPCHEM1\MSVOA_Y\METHODS\82Y112719S.M
 Quant Title : SW846 8260
 QLast Update : Wed Nov 27 12:40:47 2019
 Response via : Initial Calibration

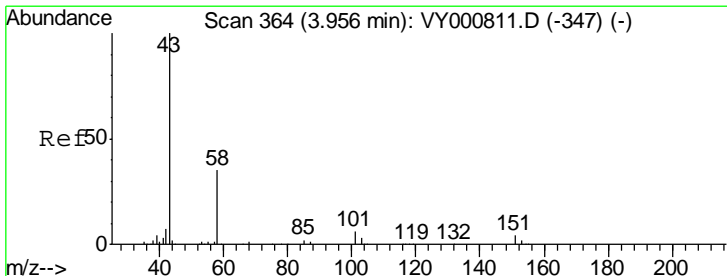
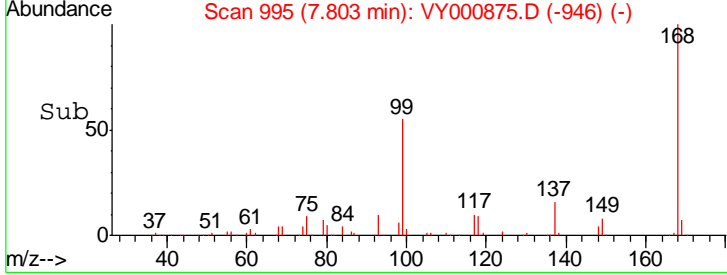
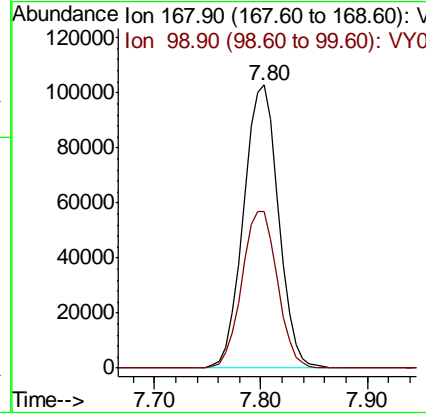
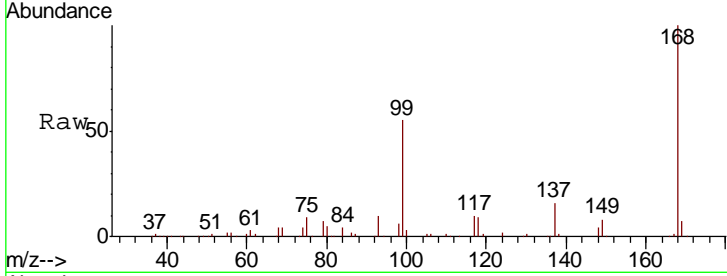




#1
 Pentafluorobenzene
 Concen: 50.000 ug/l
 RT: 7.80 min Scan# 995
 Delta R.T. -0.00 min
 Lab File: VY000875.D
 Acq: 05 Dec 2019 12:20

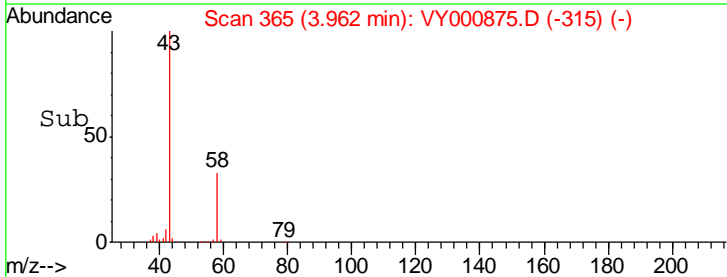
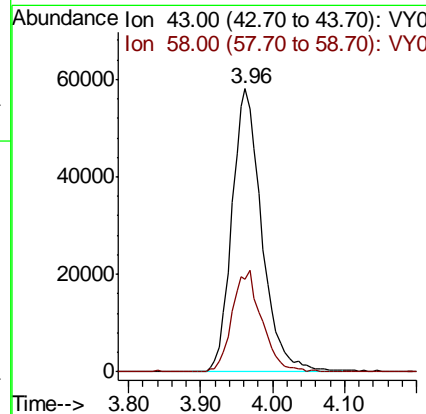
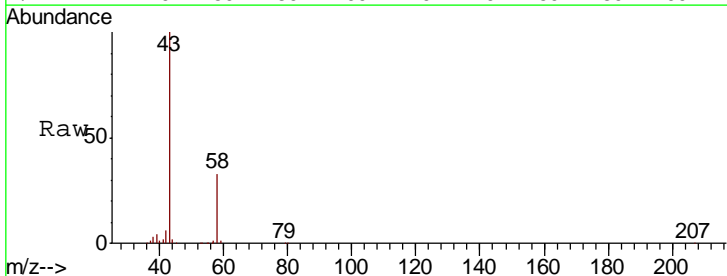
Instrument :
 MSVOA_Y
 ClientSampled :
 VOC-34

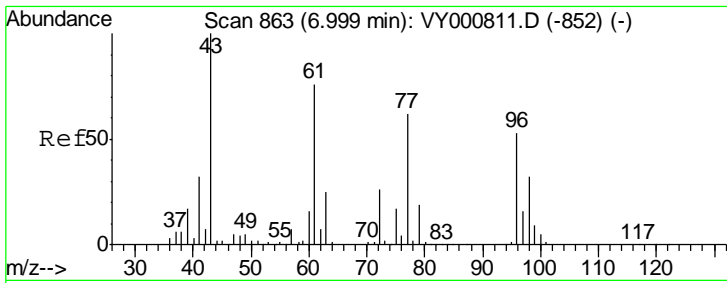
Tgt Ion: 168 Resp: 237101
 Ion Ratio Lower Upper
 168 100
 99 55.5 45.0 67.6



#16
 Acetone
 Concen: 289.066 ug/l
 RT: 3.96 min Scan# 365
 Delta R.T. 0.01 min
 Lab File: VY000875.D
 Acq: 05 Dec 2019 12:20

Tgt Ion: 43 Resp: 167065
 Ion Ratio Lower Upper
 43 100
 58 32.7 28.0 42.0

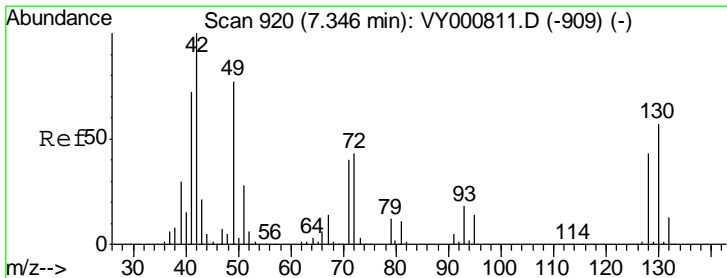
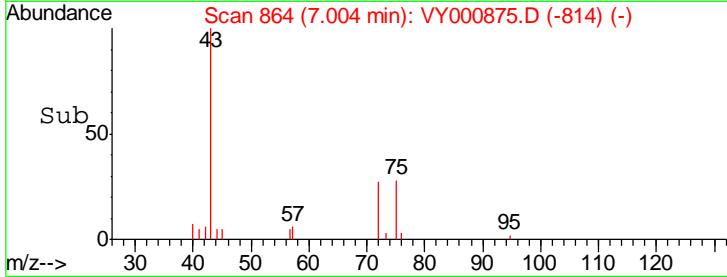
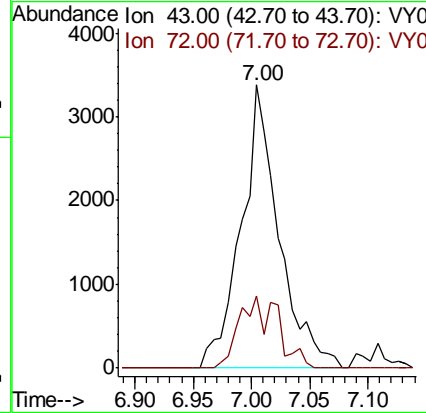
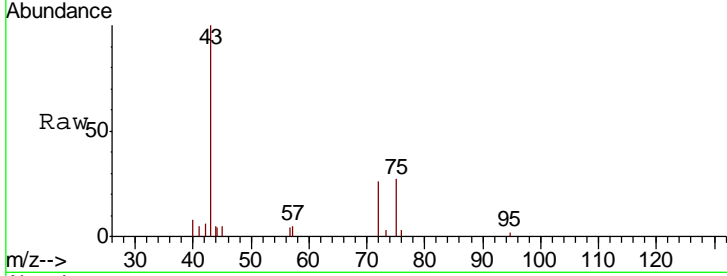




#25
 2-Butanone
 Concen: 7.152 ug/l
 RT: 7.00 min Scan# 864
 Delta R.T. 0.01 min
 Lab File: VY000875.D
 Acq: 05 Dec 2019 12:20

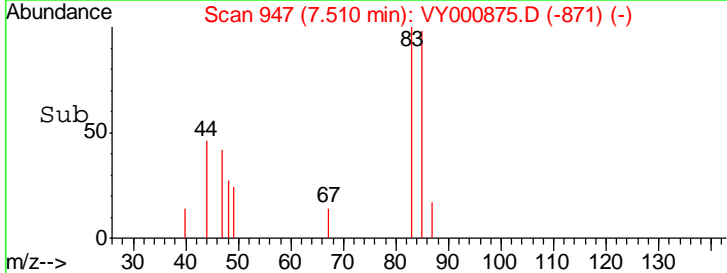
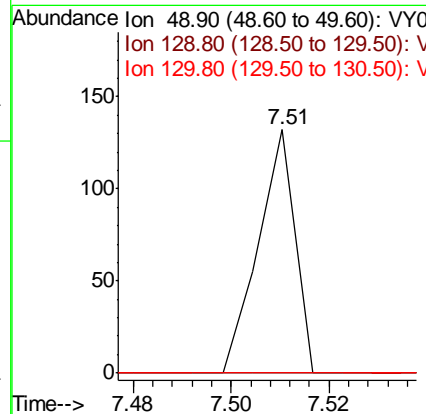
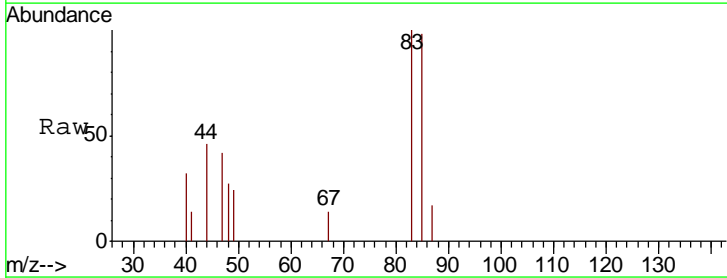
Instrument :
 MSVOA_Y
 ClientSampled :
 VOC-34

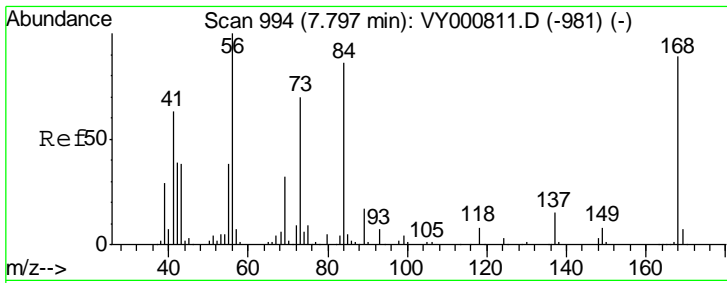
Tgt Ion: 43 Resp: 7636
 Ion Ratio Lower Upper
 43 100
 72 25.7 21.0 31.4



#28
 Bromochloromethane
 Concen: 2.051 ug/l
 RT: 7.51 min Scan# 947
 Delta R.T. 0.16 min
 Lab File: VY000875.D
 Acq: 05 Dec 2019 12:20

Tgt Ion: 49 Resp: 68
 Ion Ratio Lower Upper
 49 100
 129 0.0 0.0 3.8
 130 0.0 58.7 88.1#

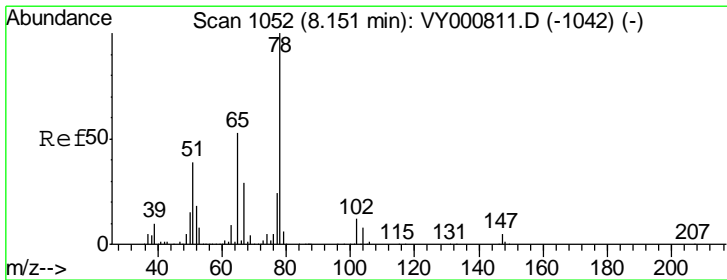
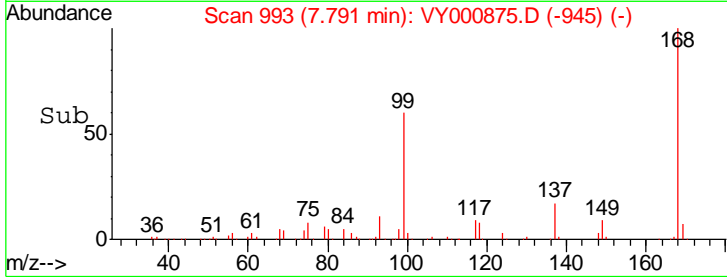
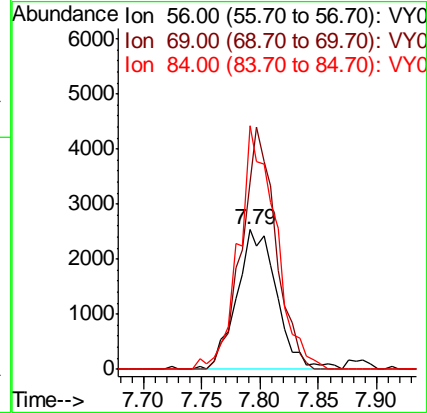
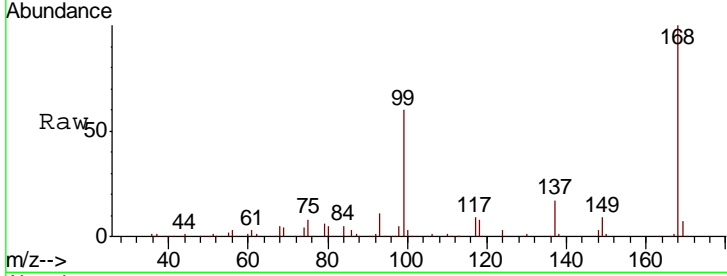




#31
 Cyclohexane
 Concen: 1.134 ug/l
 RT: 7.79 min Scan# 993
 Delta R.T. -0.01 min
 Lab File: VY000875.D
 Acq: 05 Dec 2019 12:20

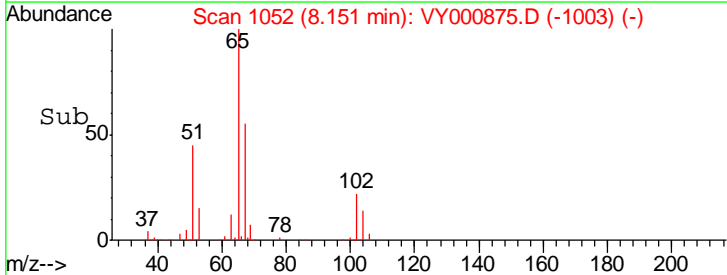
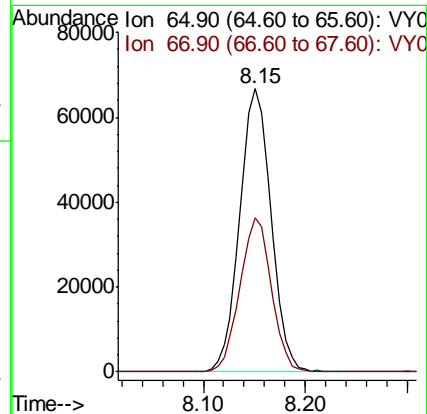
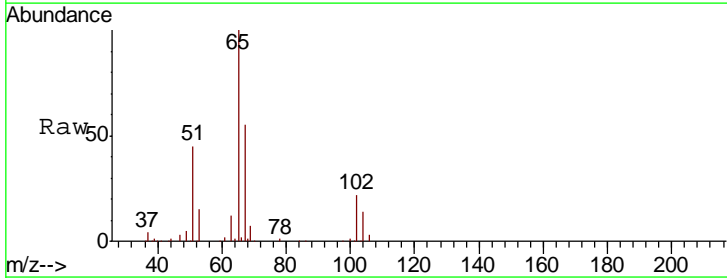
Instrument :
 MSVOA_Y
 ClientSampled :
 VOC-34

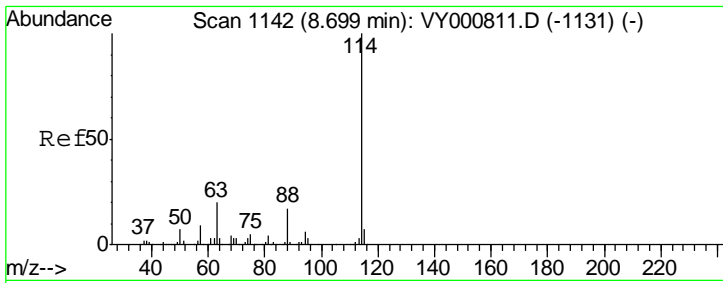
Tgt Ion	Resp	Lower	Upper
56	100		
69	134.4	25.9	38.9#
84	174.1	68.6	102.8#



#33
 1,2-Dichloroethane-d4
 Concen: 56.586 ug/l
 RT: 8.15 min Scan# 1052
 Delta R.T. -0.00 min
 Lab File: VY000875.D
 Acq: 05 Dec 2019 12:20

Tgt Ion	Resp	Lower	Upper
65	100		
67	54.6	0.0	112.0

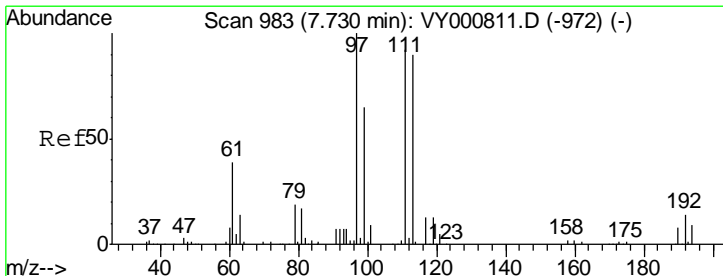
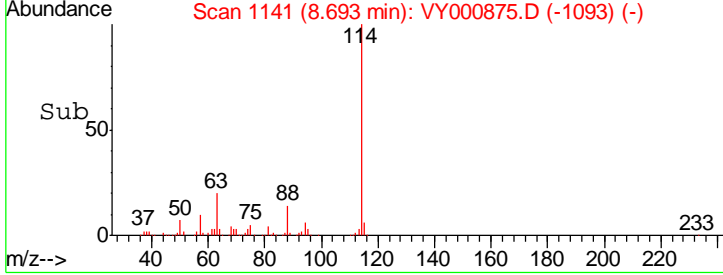
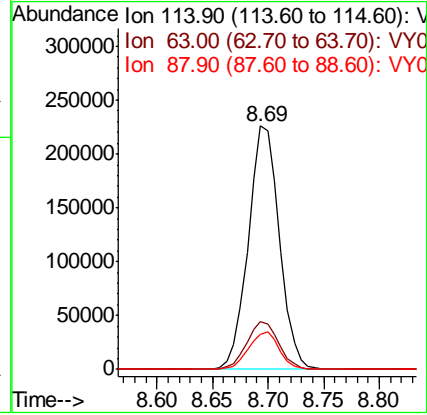
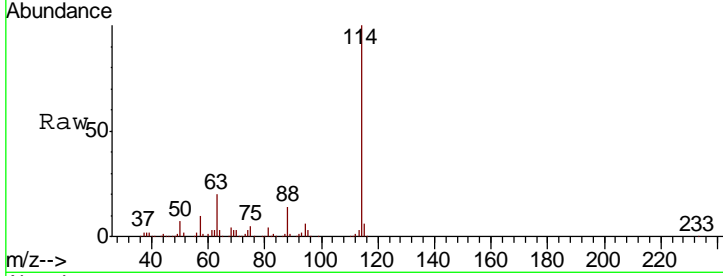




#34
 1,4-Difluorobenzene
 Concen: 50.000 ug/l
 RT: 8.69 min Scan# 1141
 Delta R.T. -0.01 min
 Lab File: VY000875.D
 Acq: 05 Dec 2019 12:20

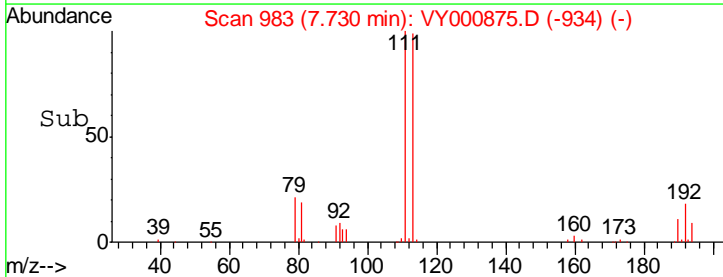
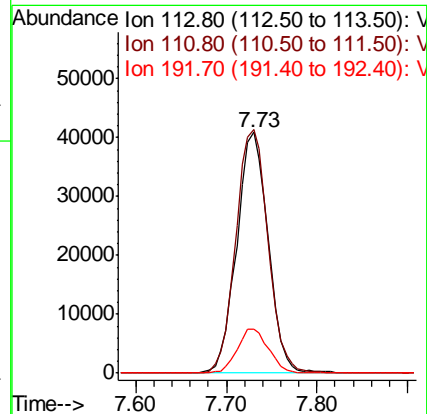
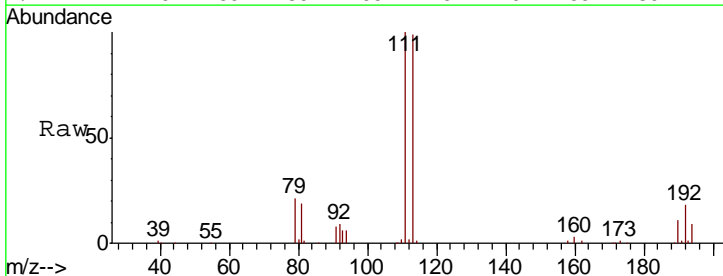
Instrument :
 MSVOA_Y
 ClientSampleId :
 VOC-34

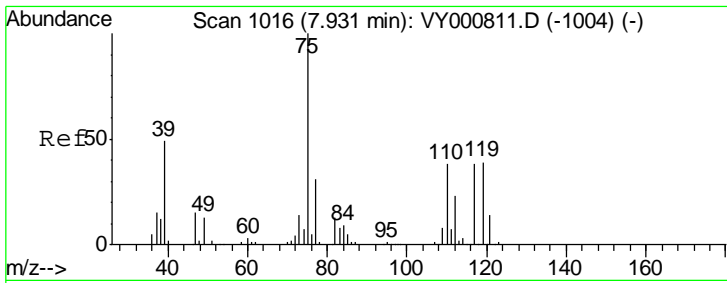
Tgt Ion	Resp	Lower	Upper
114	439230		
63	19.6	0.0	39.8
88	14.5	0.0	33.2



#35
 Dibromofluoromethane
 Concen: 38.356 ug/l
 RT: 7.73 min Scan# 983
 Delta R.T. -0.00 min
 Lab File: VY000875.D
 Acq: 05 Dec 2019 12:20

Tgt Ion	Resp	Lower	Upper
113	98186		
111	103.8	82.4	123.6
192	18.2	14.2	21.2

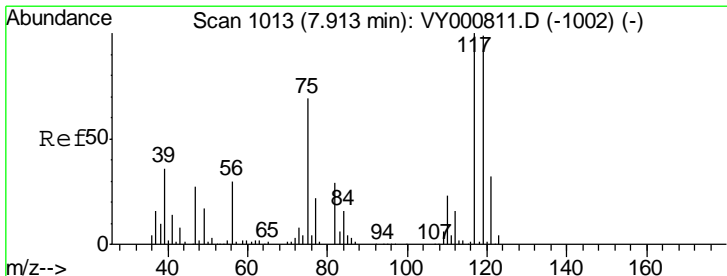
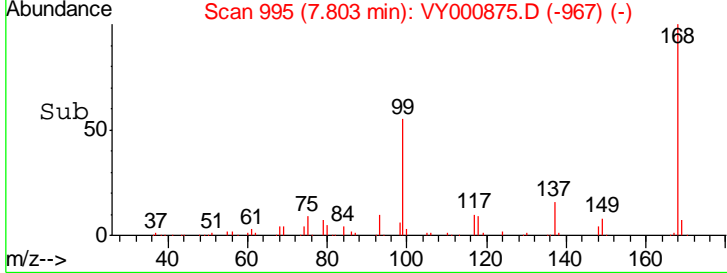
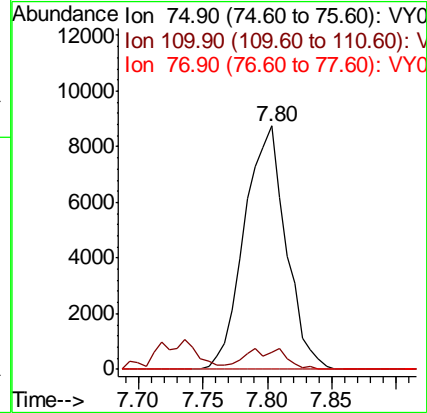
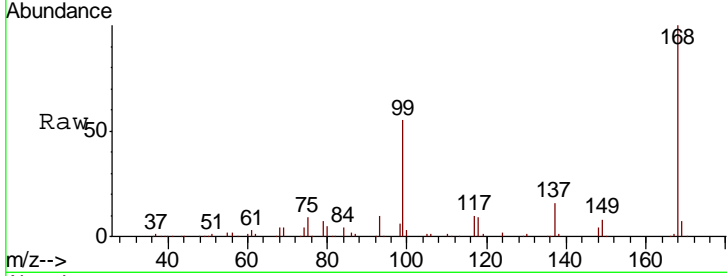




#36
 1,1-Dichloropropene
 Concen: 4.477 ug/l
 RT: 7.80 min Scan# 995
 Delta R.T. -0.13 min
 Lab File: VY000875.D
 Acq: 05 Dec 2019 12:20

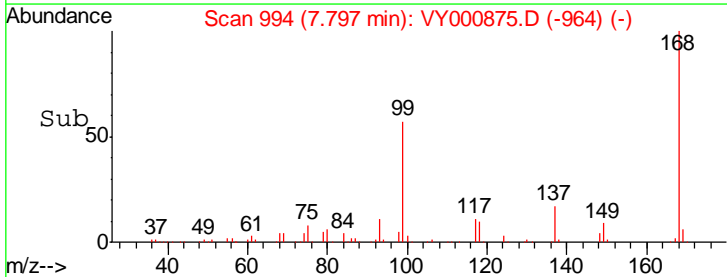
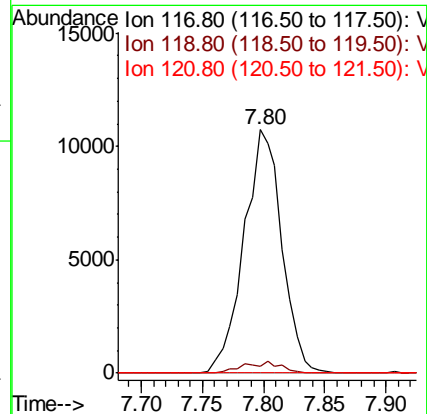
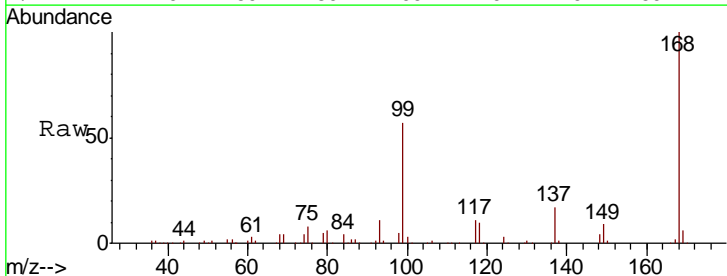
Instrument :
 MSVOA_Y
 ClientSampled :
 VOC-34

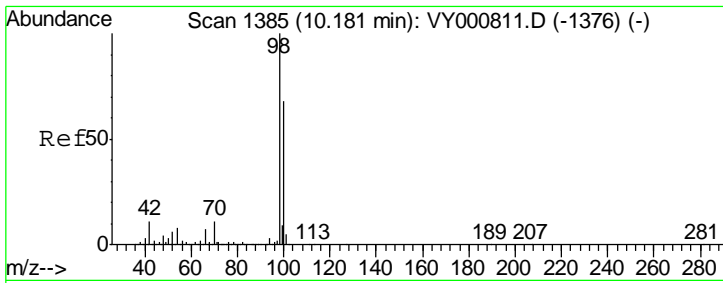
Tgt Ion	Resp	Lower	Upper
75	19551		
110	2.7	17.9	53.7#
77	0.0	24.7	37.1#



#38
 Carbon Tetrachloride
 Concen: 5.938 ug/l
 RT: 7.80 min Scan# 994
 Delta R.T. -0.12 min
 Lab File: VY000875.D
 Acq: 05 Dec 2019 12:20

Tgt Ion	Resp	Lower	Upper
117	23093		
119	3.0	79.3	118.9#
121	0.0	25.5	38.3#

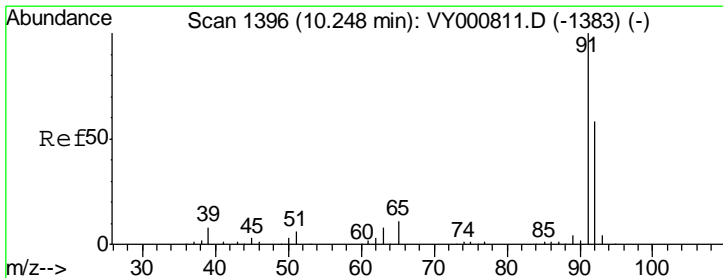
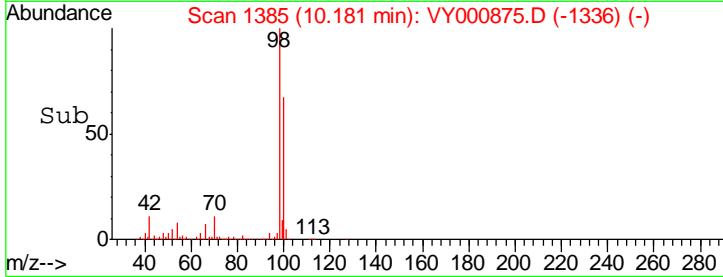
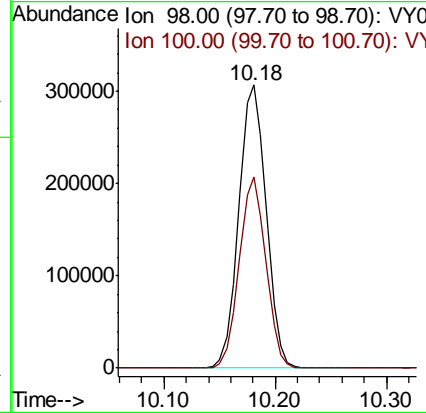
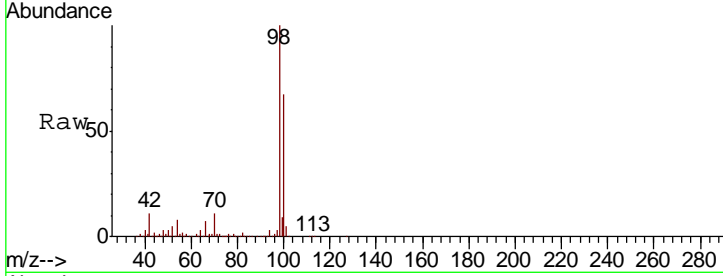




#50
 Toluene-d8
 Concen: 50.913 ug/l
 RT: 10.18 min Scan# 1385
 Delta R.T. -0.00 min
 Lab File: VY000875.D
 Acq: 05 Dec 2019 12:20

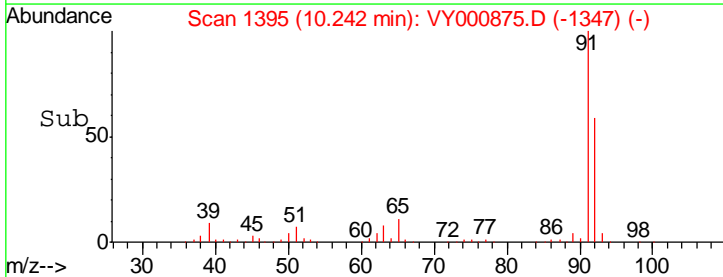
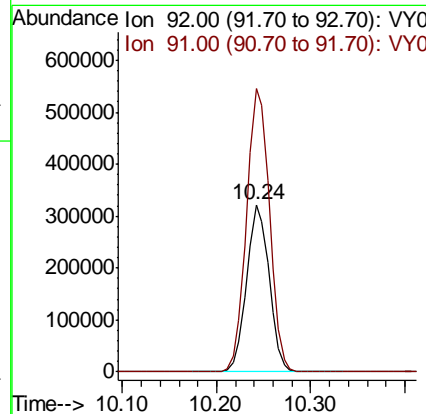
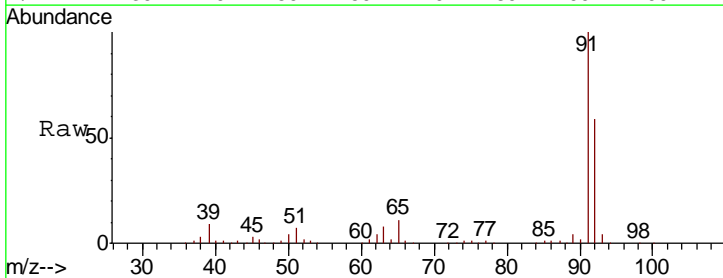
Instrument :
 MSVOA_Y
 ClientSampled :
 VOC-34

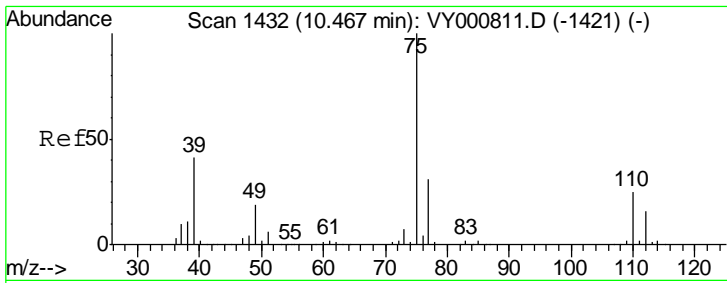
Tgt Ion	Resp	Lower	Upper
98	521047		
100	65.8	53.1	79.7



#52
 Toluene
 Concen: 68.207 ug/l
 RT: 10.24 min Scan# 1395
 Delta R.T. -0.01 min
 Lab File: VY000875.D
 Acq: 05 Dec 2019 12:20

Tgt Ion	Resp	Lower	Upper
92	537219		
91	173.1	136.6	204.8

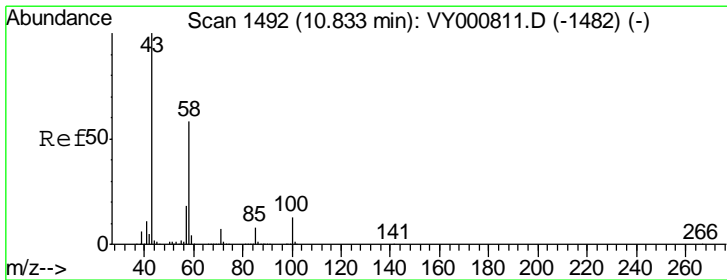
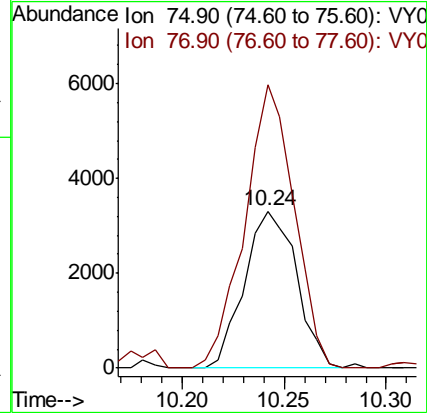
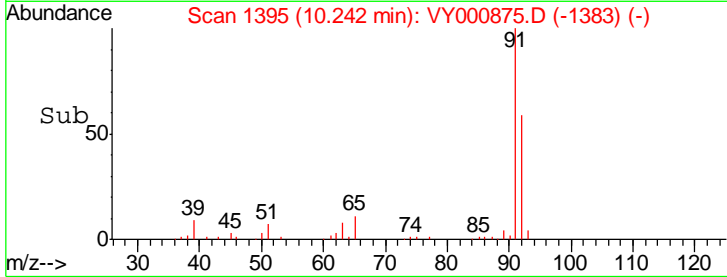
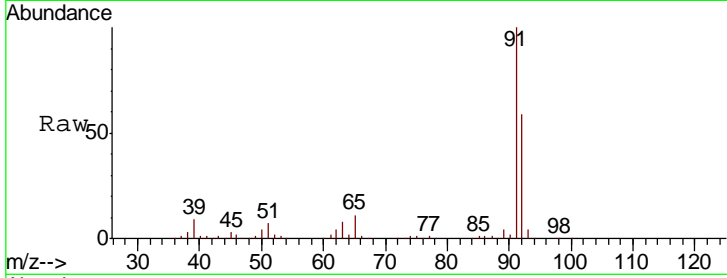




#53
 t-1,3-Dichloropropene
 Concen: 1.390 ug/l
 RT: 10.24 min Scan# 1395
 Delta R.T. -0.23 min
 Lab File: VY000875.D
 Acq: 05 Dec 2019 12:20

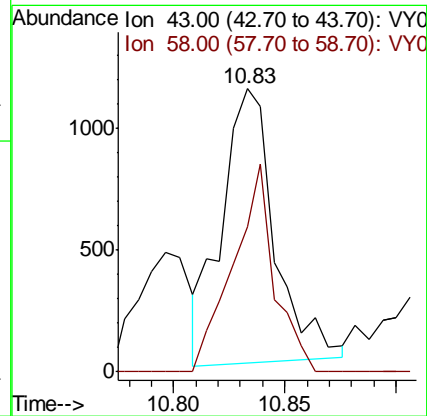
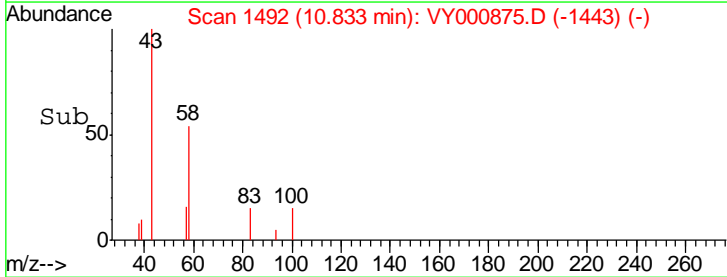
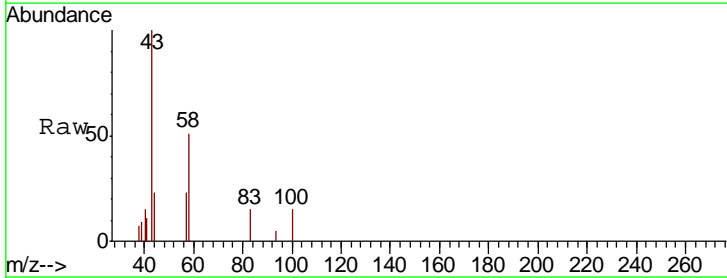
Instrument :
 MSVOA_Y
 ClientSampled :
 VOC-34

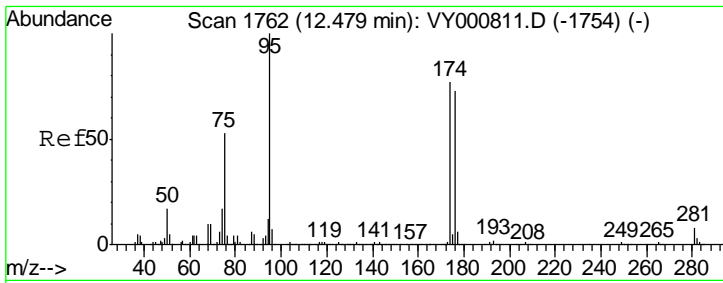
Tgt Ion: 75 Resp: 5856
 Ion Ratio Lower Upper
 75 100
 77 180.1 25.1 37.7#



#59
 2-Hexanone
 Concen: 1.041 ug/l
 RT: 10.83 min Scan# 1492
 Delta R.T. -0.00 min
 Lab File: VY000875.D
 Acq: 05 Dec 2019 12:20

Tgt Ion: 43 Resp: 1863
 Ion Ratio Lower Upper
 43 100
 58 58.9 29.0 87.1

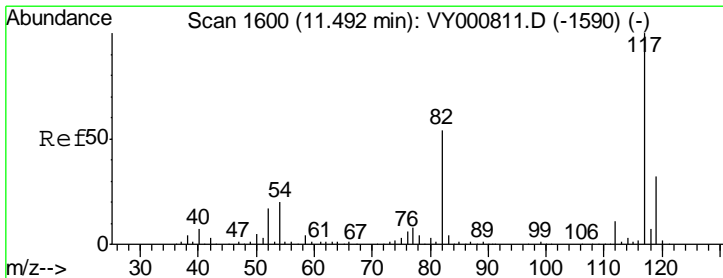
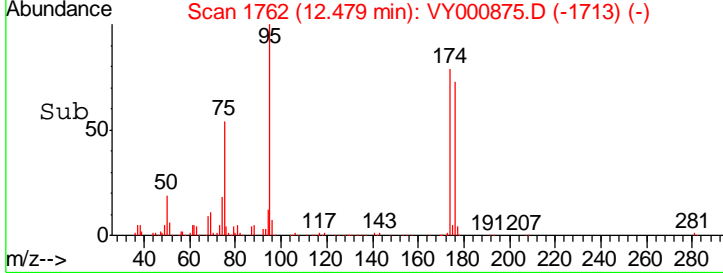
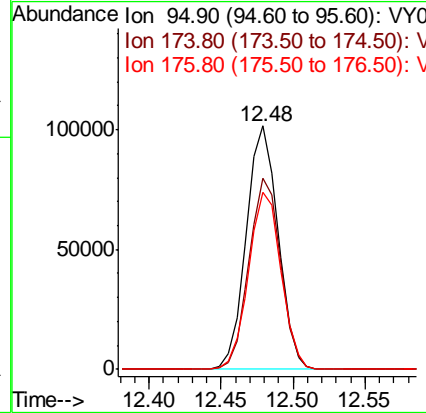
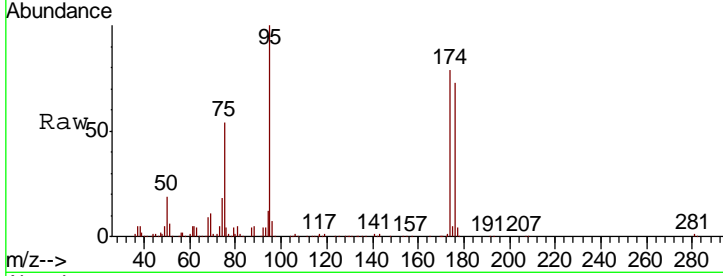




#62
 4-Bromofluorobenzene
 Concen: 40.502 ug/l
 RT: 12.48 min Scan# 1762
 Delta R.T. -0.00 min
 Lab File: VY000875.D
 Acq: 05 Dec 2019 12:20

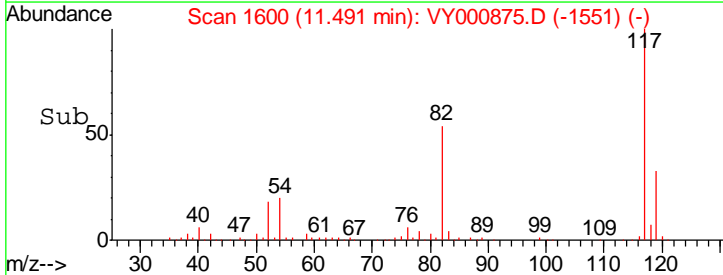
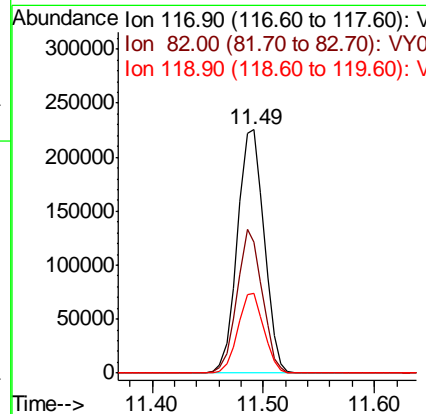
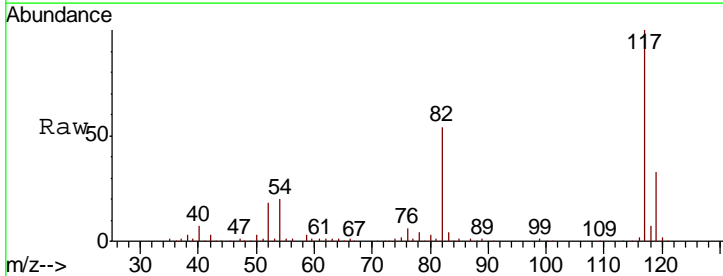
Instrument :
 MSVOA_Y
 ClientSampled :
 VOC-34

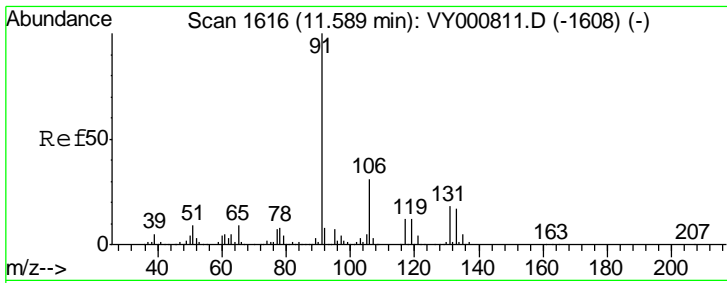
Tgt Ion	Resp	Lower	Upper
95	155667		
174	77.9	0.0	150.6
176	73.8	0.0	145.2



#63
 Chlorobenzene-d5
 Concen: 50.000 ug/l
 RT: 11.49 min Scan# 1600
 Delta R.T. -0.00 min
 Lab File: VY000875.D
 Acq: 05 Dec 2019 12:20

Tgt Ion	Resp	Lower	Upper
117	374808		
82	53.6	43.1	64.7
119	32.7	25.3	37.9

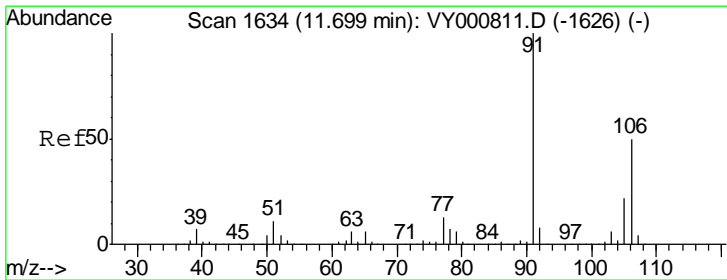
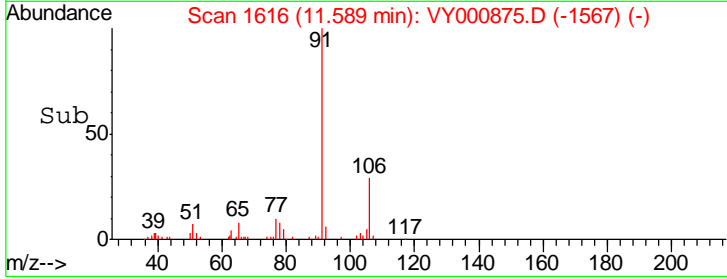
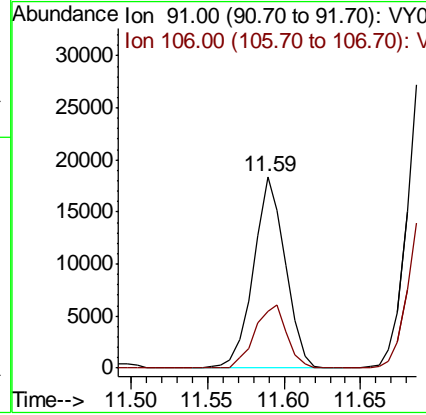
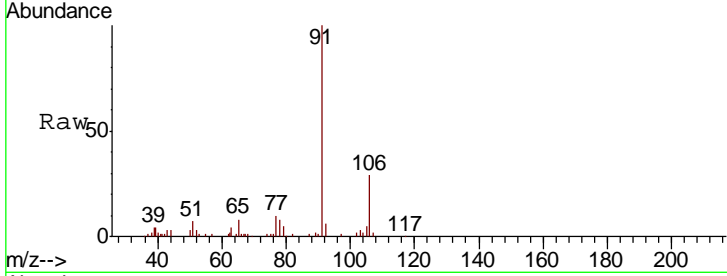




#67
Ethyl Benzene
Concen: 1.833 ug/l
RT: 11.59 min Scan# 1616
Delta R.T. -0.00 min
Lab File: VY000875.D
Acq: 05 Dec 2019 12:20

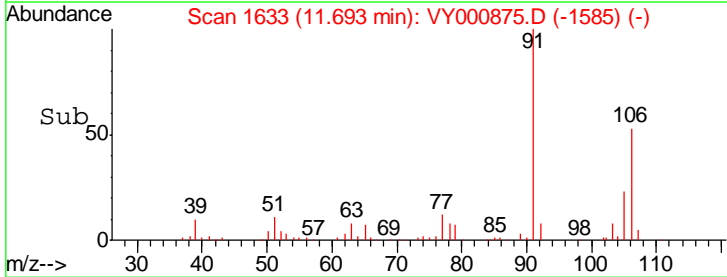
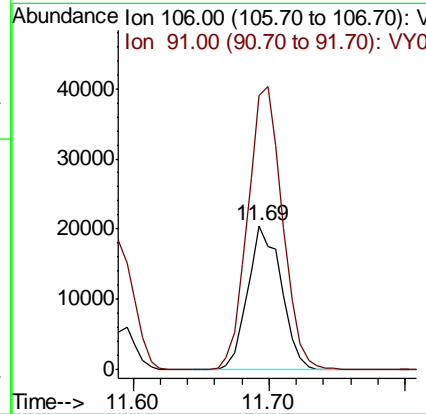
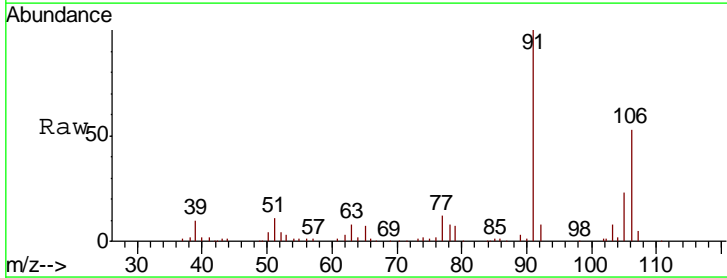
Instrument :
MSVOA_Y
ClientSampled :
VOC-34

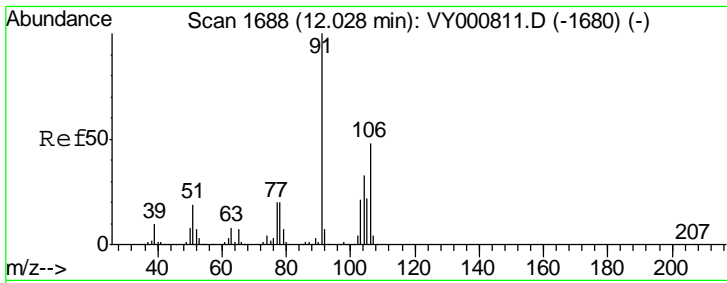
Tgt Ion: 91 Resp: 26591
Ion Ratio Lower Upper
91 100
106 29.4 24.4 36.6



#68
m/p-Xylenes
Concen: 6.544 ug/l
RT: 11.69 min Scan# 1633
Delta R.T. -0.01 min
Lab File: VY000875.D
Acq: 05 Dec 2019 12:20

Tgt Ion: 106 Resp: 35642
Ion Ratio Lower Upper
106 100
91 202.3 159.6 239.4

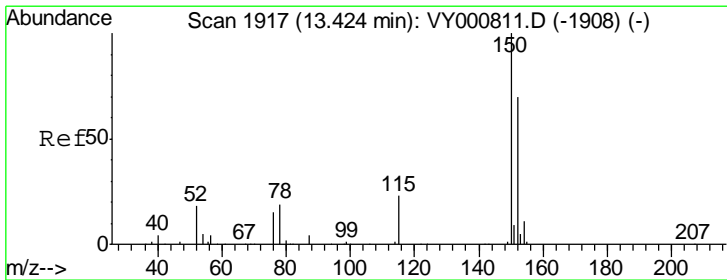
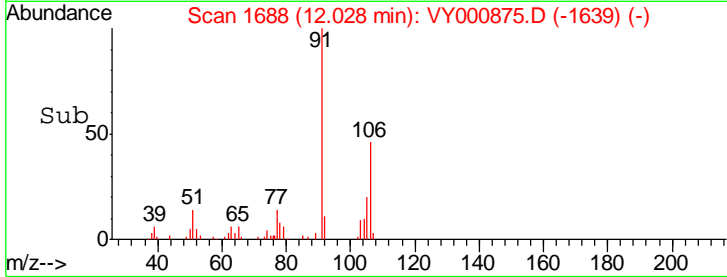
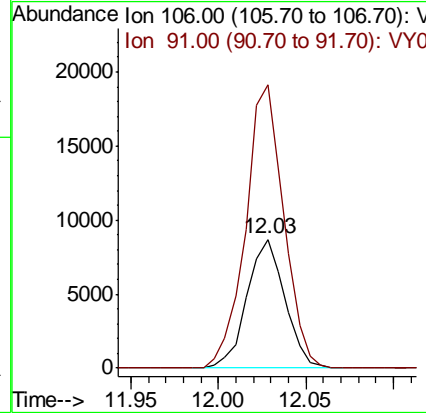
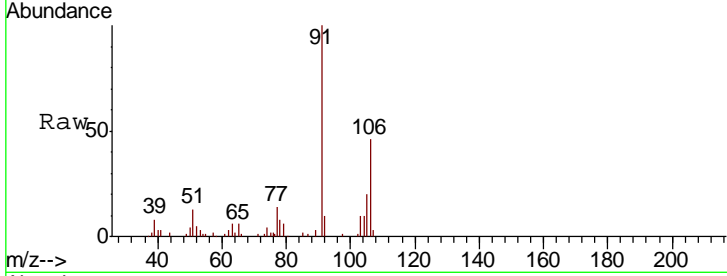




#69
 o-Xylene
 Concen: 2.576 ug/l
 RT: 12.03 min Scan# 1688
 Delta R.T. -0.00 min
 Lab File: VY000875.D
 Acq: 05 Dec 2019 12:20

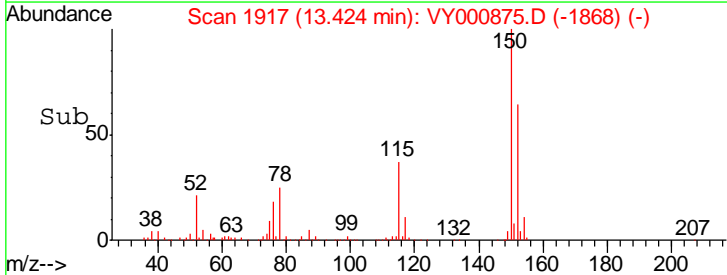
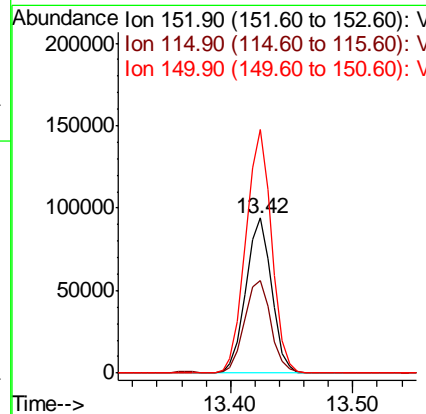
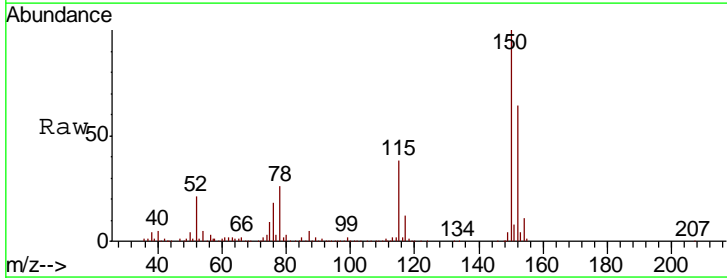
Instrument :
 MSVOA_Y
 ClientSampled :
 VOC-34

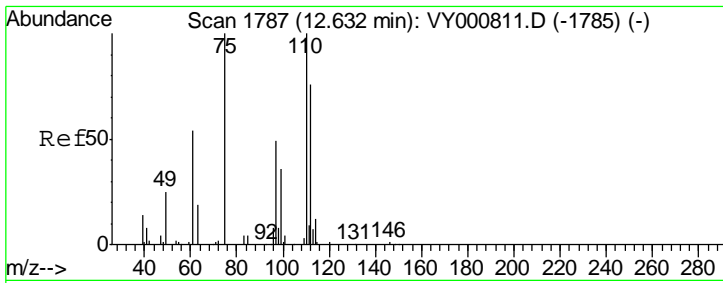
Tgt Ion	Resp	Lower	Upper
106	13081		
106	100		
91	220.6	106.1	318.1



#72
 1,4-Dichlorobenzene-d4
 Concen: 50.000 ug/l
 RT: 13.42 min Scan# 1917
 Delta R.T. -0.00 min
 Lab File: VY000875.D
 Acq: 05 Dec 2019 12:20

Tgt Ion	Resp	Lower	Upper
152	137085		
152	100		
115	61.4	29.3	87.8
150	157.2	0.0	351.2

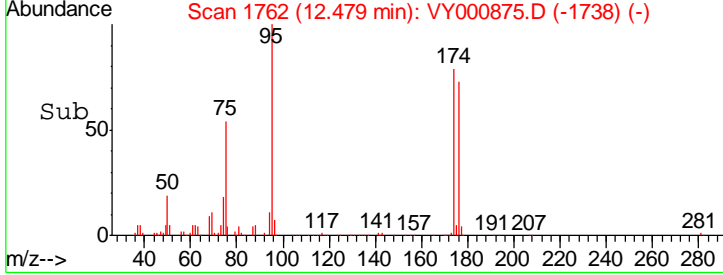
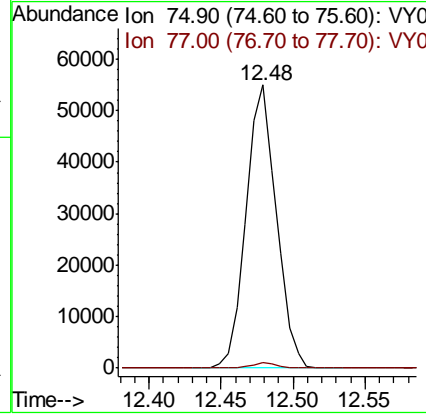
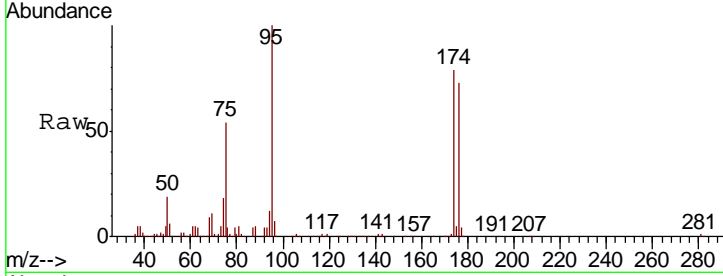




#76
 1,2,3-Trichloropropane
 Concen: 51.421 ug/l
 RT: 12.48 min Scan# 1762
 Delta R.T. -0.15 min
 Lab File: VY000875.D
 Acq: 05 Dec 2019 12:20

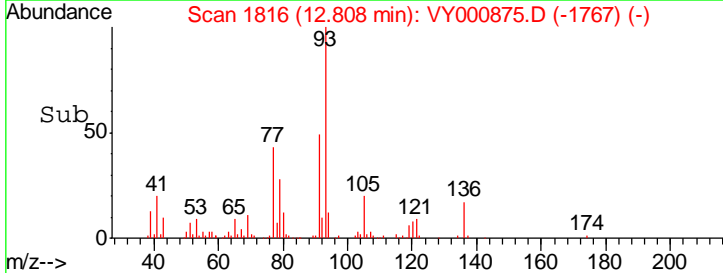
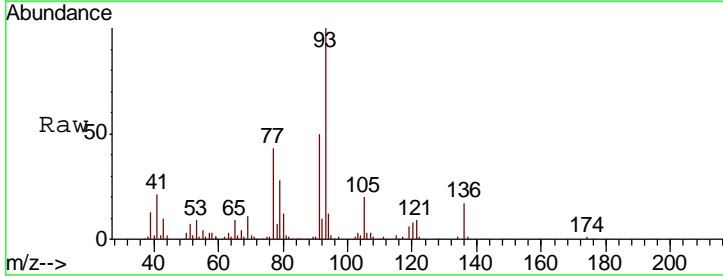
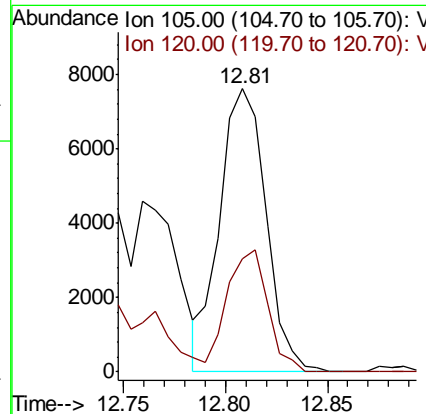
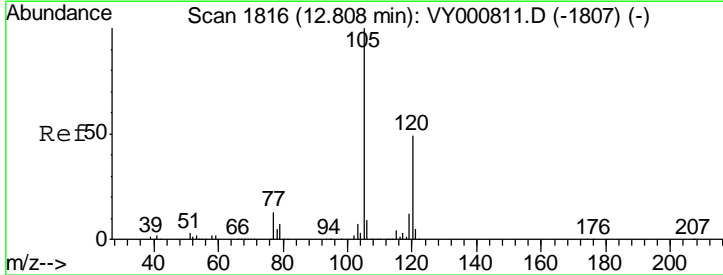
Instrument :
 MSVOA_Y
 ClientSampled :
 VOC-34

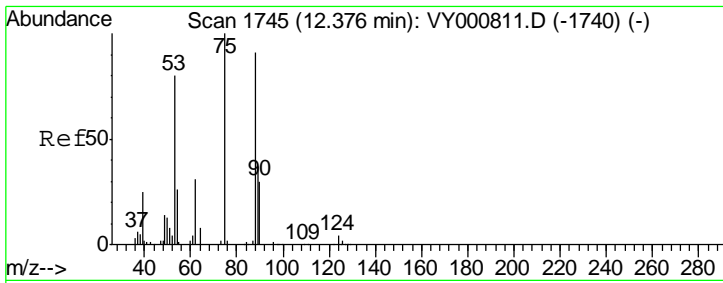
Tgt Ion: 75 Resp: 79865
 Ion Ratio Lower Upper
 75 100
 77 1.8 0.0 0.0#



#80
 1,3,5-Trimethylbenzene
 Concen: 1.324 ug/l
 RT: 12.81 min Scan# 1816
 Delta R.T. -0.00 min
 Lab File: VY000875.D
 Acq: 05 Dec 2019 12:20

Tgt Ion: 105 Resp: 11961
 Ion Ratio Lower Upper
 105 100
 120 37.9 24.6 74.0

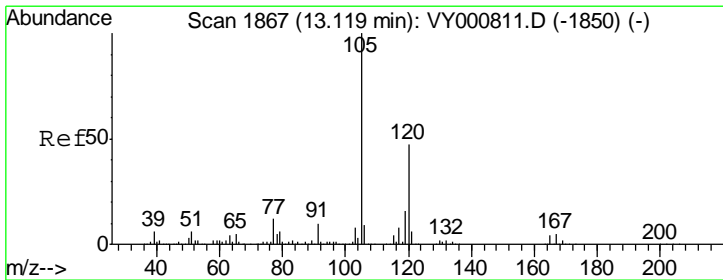
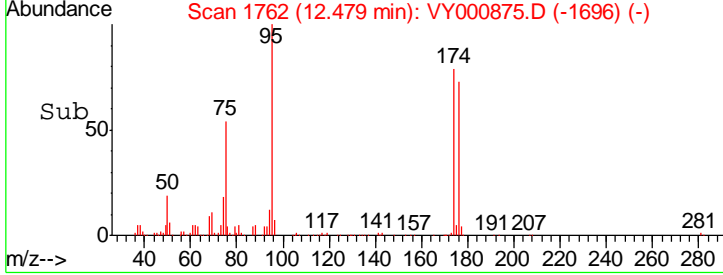
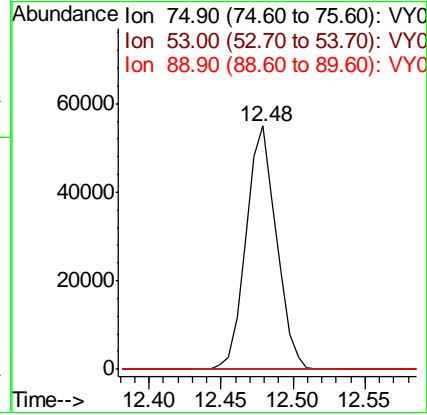
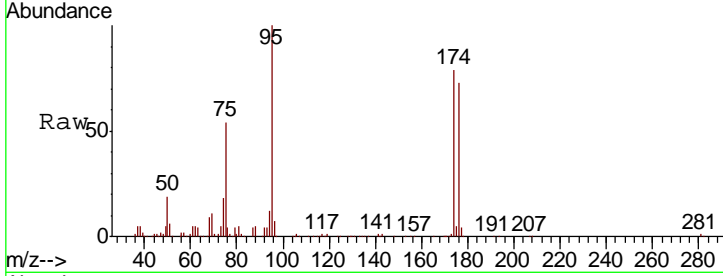




#81
 trans-1,4-Dichloro-2-butene
 Concen: 101.006 ug/l
 RT: 12.48 min Scan# 1762
 Delta R.T. 0.10 min
 Lab File: VY000875.D
 Acq: 05 Dec 2019 12:20

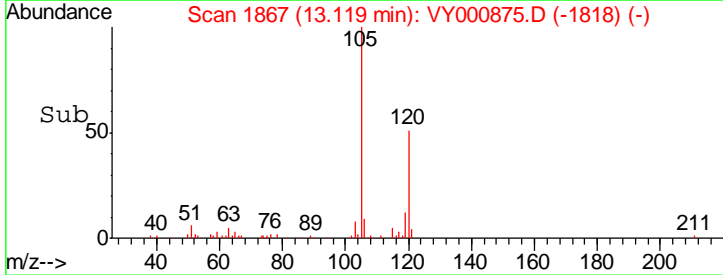
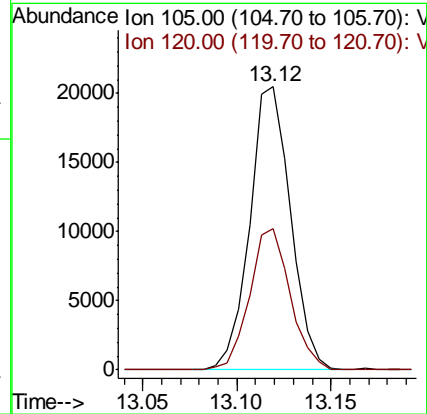
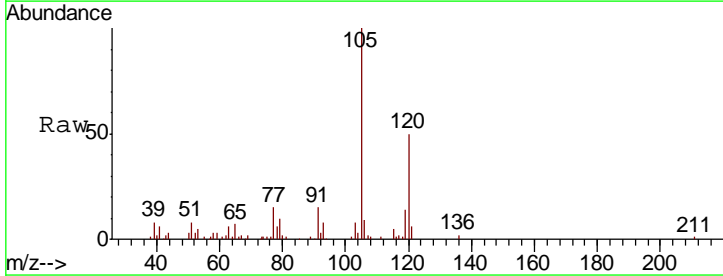
Instrument :
 MSVOA_Y
 ClientSampled :
 VOC-34

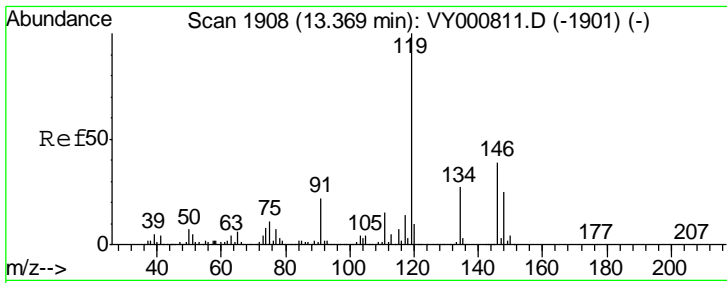
Tgt Ion	Resp	Lower	Upper
75	100		
53	0.1	64.6	96.8#
89	0.0	33.6	50.4#



#84
 1,2,4-Trimethylbenzene
 Concen: 3.396 ug/l
 RT: 13.12 min Scan# 1867
 Delta R.T. -0.00 min
 Lab File: VY000875.D
 Acq: 05 Dec 2019 12:20

Tgt Ion	Resp	Lower	Upper
105	100		
120	49.6	22.6	67.8

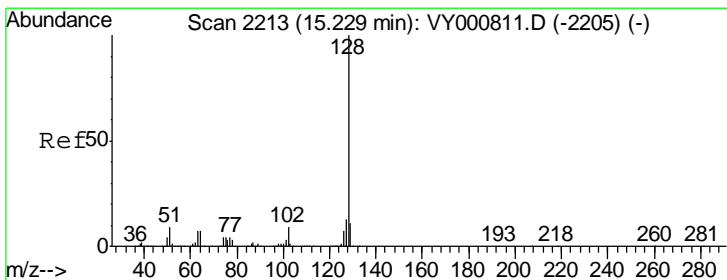
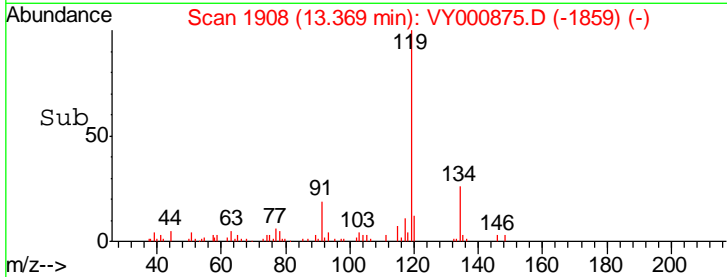
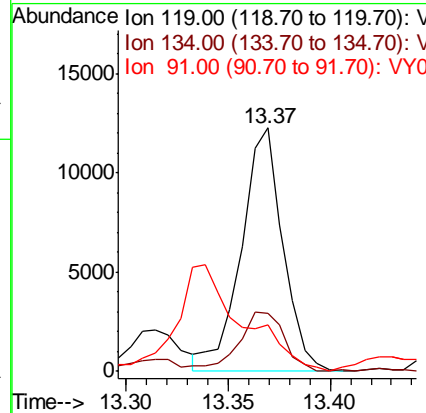
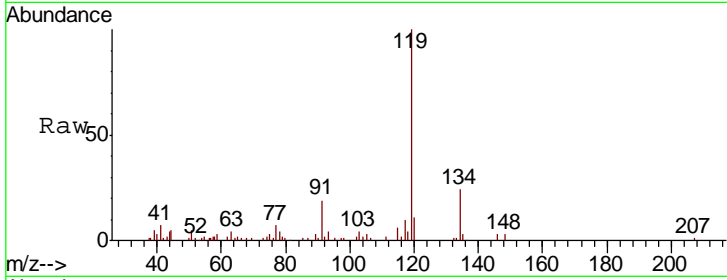




#86
 p-Isopropyltoluene
 Concen: 1.809 ug/l
 RT: 13.37 min Scan# 1908
 Delta R.T. -0.00 min
 Lab File: VY000875.D
 Acq: 05 Dec 2019 12:20

Instrument :
 MSVOA_Y
 ClientSampled :
 VOC-34

Tgt Ion	Resp	Lower	Upper
119	17385		
134	25.7	13.5	40.4
91	0.0	11.5	34.5#



#95
 Naphthalene
 Concen: 5.617 ug/l
 RT: 15.23 min Scan# 2214
 Delta R.T. 0.01 min
 Lab File: VY000875.D
 Acq: 05 Dec 2019 12:20

Tgt Ion	Resp	Lower	Upper
128	36848		
127	14.1	10.1	15.1
129	11.4	8.8	13.2

