

Data Path : Z:\voasrv\HPCHEM1\MSVOA\_Y\Data\VY120522\  
 Data File : VY011698.D  
 Acq On : 05 Dec 2022 15:52  
 Operator : KP/MD  
 Sample : N5871-01  
 Misc : 5.11g/5.0mL/MSVOA\_Y/SOIL  
 ALS Vial : 14 Sample Multiplier: 1

Instrument :  
 MSVOA\_Y  
 ClientSampleId :  
 SU-4-120222

Quant Time: Dec 06 00:37:02 2022  
 Quant Method : Z:\voasrv\HPCHEM1\MSVOA\_Y\methods\82Y111822S.M  
 Quant Title : SW846 8260  
 QLast Update : Sat Nov 19 22:37:14 2022  
 Response via : Initial Calibration

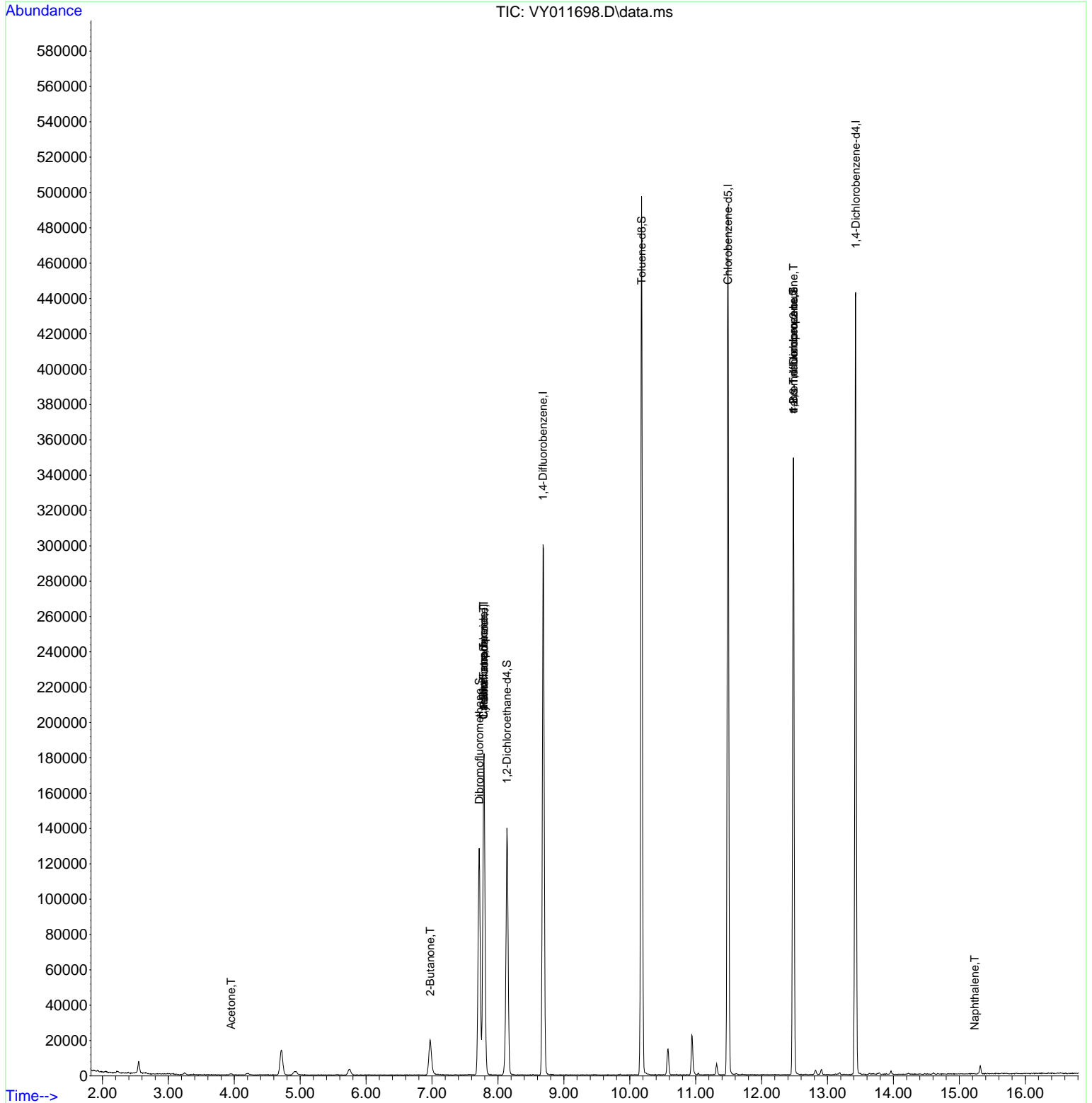
Compound	R.T.	QIon	Response	Conc	Units	Dev(Min)
-----						
Internal Standards						
1) Pentafluorobenzene	7.789	168	137662	50.000	ug/l	0.00
34) 1,4-Difluorobenzene	8.685	114	254450	50.000	ug/l	0.00
63) Chlorobenzene-d5	11.489	117	259559	50.000	ug/l	0.00
72) 1,4-Dichlorobenzene-d4	13.428	152	116365	50.000	ug/l	0.00
System Monitoring Compounds						
33) 1,2-Dichloroethane-d4	8.136	65	104402	74.689	ug/l	0.00
Spiked Amount	50.000	Range 50 - 163	Recovery	=	149.380%	
35) Dibromofluoromethane	7.716	113	86984	55.532	ug/l	0.00
Spiked Amount	50.000	Range 54 - 147	Recovery	=	111.060%	
50) Toluene-d8	10.179	98	313753	55.121	ug/l	0.00
Spiked Amount	50.000	Range 49 - 140	Recovery	=	110.240%	
62) 4-Bromofluorobenzene	12.483	95	104173	49.499	ug/l	0.00
Spiked Amount	50.000	Range 25 - 144	Recovery	=	99.000%	
Target Compounds						
						Qvalue
2) Dichlorodifluoromethane	1.912	85	67	Below Cal	#	43
3) Chloromethane	2.113	50	204	Below Cal	#	44
5) Bromomethane	2.656	94	133	Below Cal	#	64
11) Tert butyl alcohol	4.936	59	2598	Below Cal	#	77
16) Acetone	3.954	43	1038	2.286	ug/l #	72
18) Methyl Acetate	4.485	43	252	Below Cal	#	56
20) Methylene Chloride	4.716	84	10366	Below Cal		86
25) 2-Butanone	6.972	43	1166	1.954	ug/l	95
31) Cyclohexane	7.783	56	2961	1.278	ug/l #	9
36) 1,1-Dichloropropene	7.783	75	10918	4.459	ug/l #	51
38) Carbon Tetrachloride	7.783	117	13979	5.103	ug/l #	15
76) 1,2,3-Trichloropropane	12.483	75	54102	43.172	ug/l #	100
81) trans-1,4-Dichloro-2-b...	12.483	75	54102	94.561	ug/l #	7
95) Naphthalene	15.233	128	246	4.075	ug/l #	69
-----						

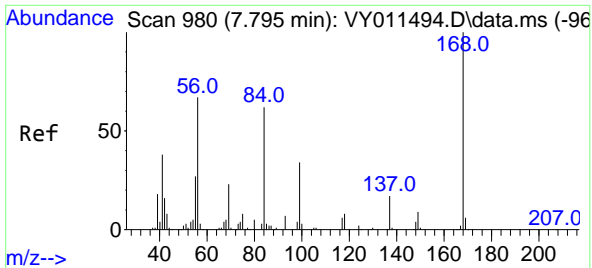
(#) = qualifier out of range (m) = manual integration (+) = signals summed

Data Path : Z:\voasrv\HPCHEM1\MSVOA\_Y\Data\VY120522\  
 Data File : VY011698.D  
 Acq On : 05 Dec 2022 15:52  
 Operator : KP/MD  
 Sample : N5871-01  
 Misc : 5.11g/5.0mL/MSVOA\_Y/SOIL  
 ALS Vial : 14 Sample Multiplier: 1

**Instrument :**  
 MSVOA\_Y  
**ClientSampleId :**  
 SU-4-120222

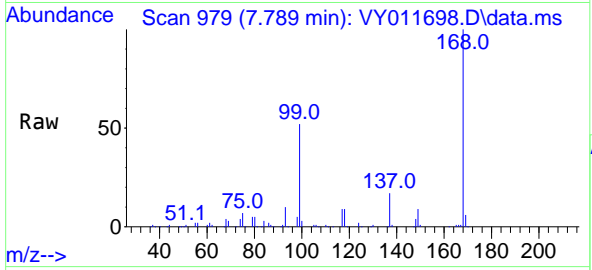
Quant Time: Dec 06 00:37:02 2022  
 Quant Method : Z:\voasrv\HPCHEM1\MSVOA\_Y\methods\82Y111822S.M  
 Quant Title : SW846 8260  
 QLast Update : Sat Nov 19 22:37:14 2022  
 Response via : Initial Calibration



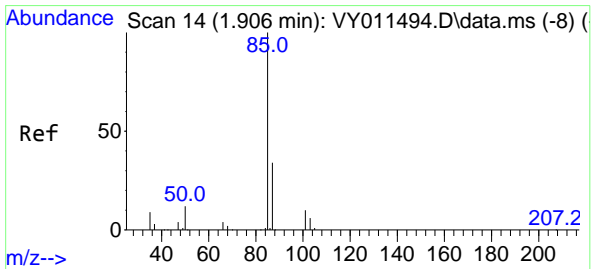
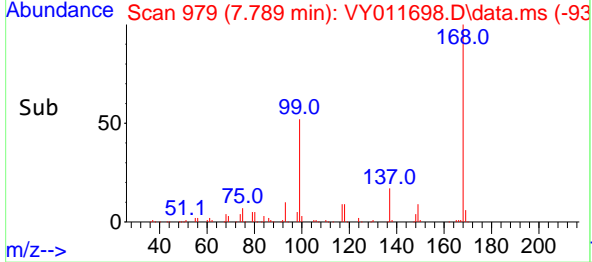
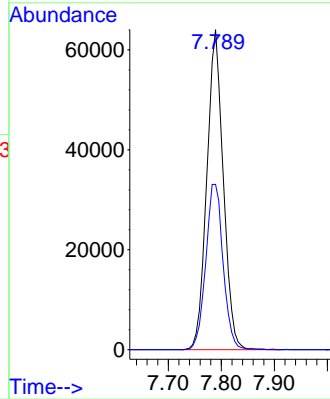


#1  
 Pentafluorobenzene  
 Concen: 50.000 ug/l  
 RT: 7.789 min Scan# 91  
 Delta R.T. -0.006 min  
 Lab File: VY011698.D  
 Acq: 05 Dec 2022 15:52

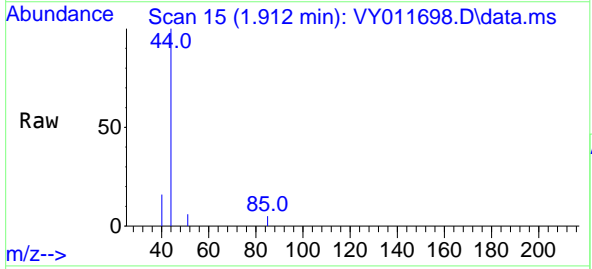
Instrument :  
 MSVOA\_Y  
 ClientSampleId :  
 SU-4-120222



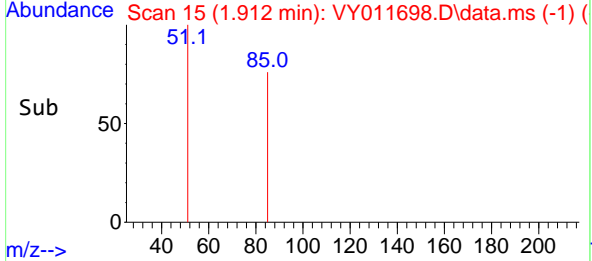
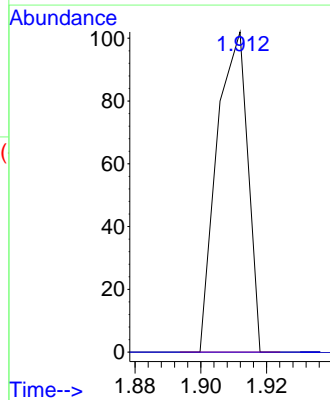
Tgt Ion:168 Resp: 137662  
 Ion Ratio Lower Upper  
 168 100  
 99 51.6 46.9 70.3

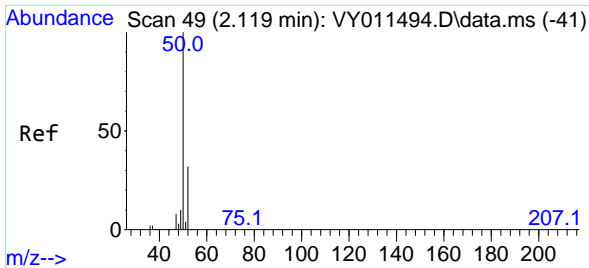


#2  
 Dichlorodifluoromethane  
 Concen: Below Cal  
 RT: 1.912 min Scan# 15  
 Delta R.T. 0.006 min  
 Lab File: VY011698.D  
 Acq: 05 Dec 2022 15:52



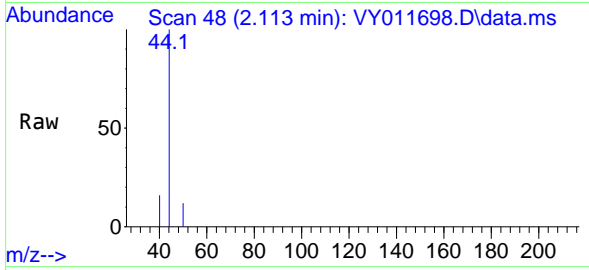
Tgt Ion: 85 Resp: 67  
 Ion Ratio Lower Upper  
 85 100  
 87 0.0 16.1 48.2#



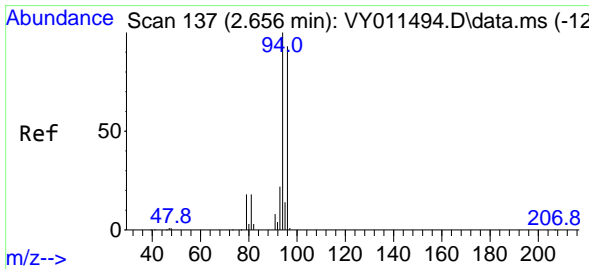
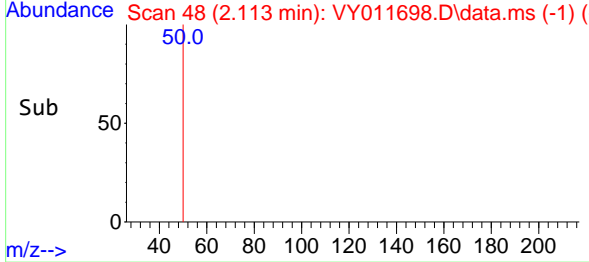
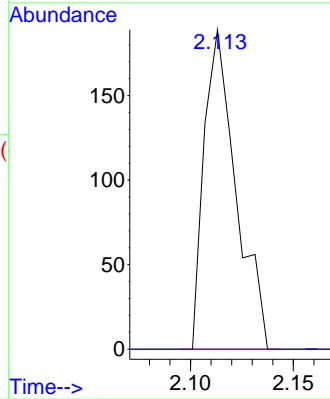


#3  
 Chloromethane  
 Concen: Below Cal  
 RT: 2.113 min Scan# 41  
 Delta R.T. -0.006 min  
 Lab File: VY011698.D  
 Acq: 05 Dec 2022 15:52

Instrument : MSVOA\_Y  
 ClientSampleId : SU-4-120222

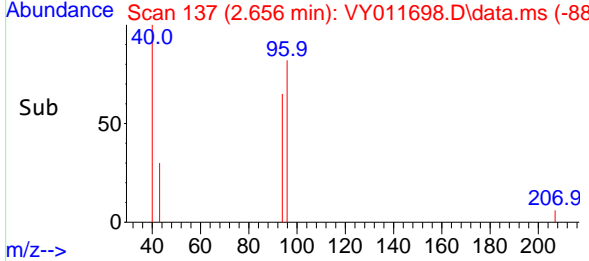
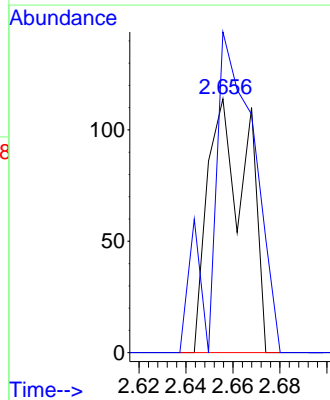
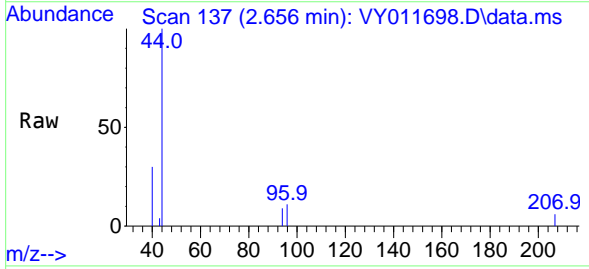


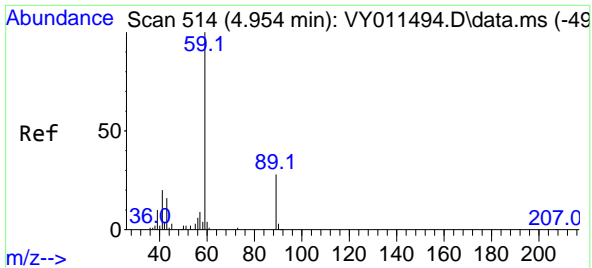
Tgt Ion: 50 Resp: 204  
 Ion Ratio Lower Upper  
 50 100  
 52 0.0 24.6 37.0#



#5  
 Bromomethane  
 Concen: Below Cal  
 RT: 2.656 min Scan# 137  
 Delta R.T. -0.000 min  
 Lab File: VY011698.D  
 Acq: 05 Dec 2022 15:52

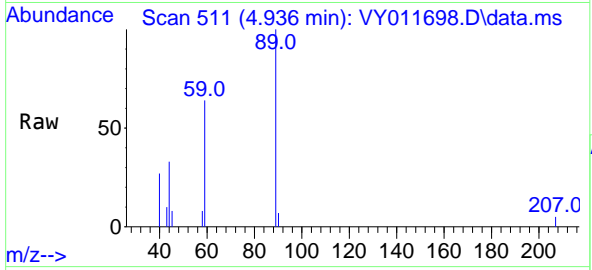
Tgt Ion: 94 Resp: 133  
 Ion Ratio Lower Upper  
 94 100  
 96 126.3 73.5 110.3#



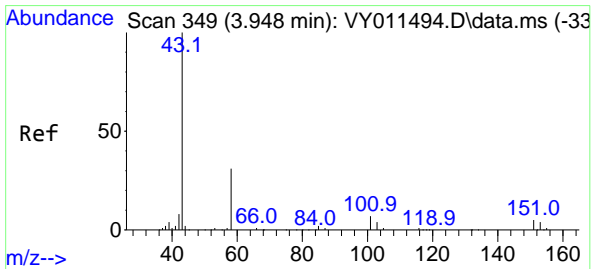
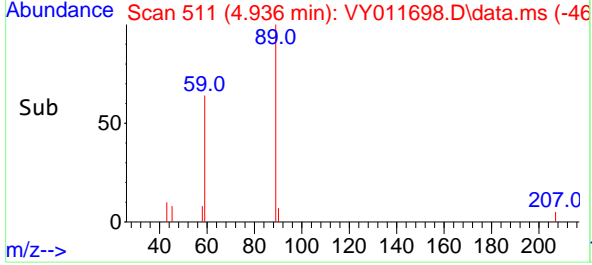
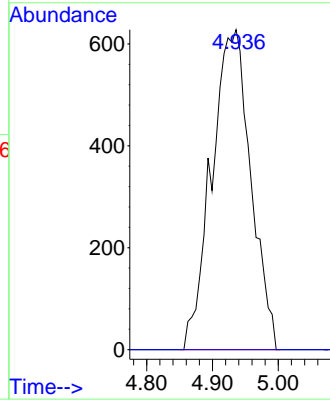


#11  
 Tert butyl alcohol  
 Concen: Below Cal  
 RT: 4.936 min Scan# 514  
 Delta R.T. -0.018 min  
 Lab File: VY011698.D  
 Acq: 05 Dec 2022 15:52

Instrument : MSVOA\_Y  
 ClientSampleId : SU-4-120222

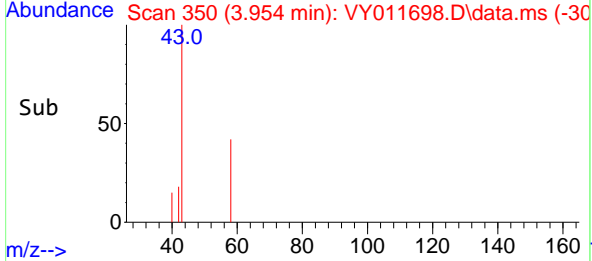
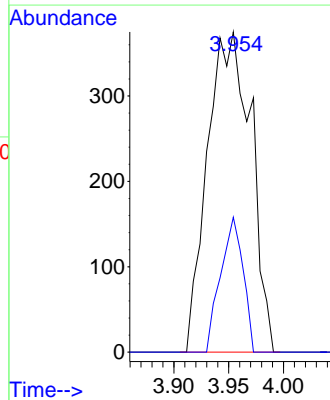
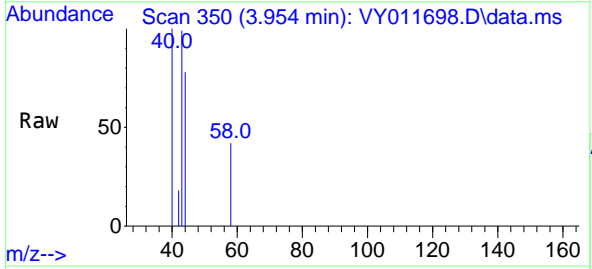


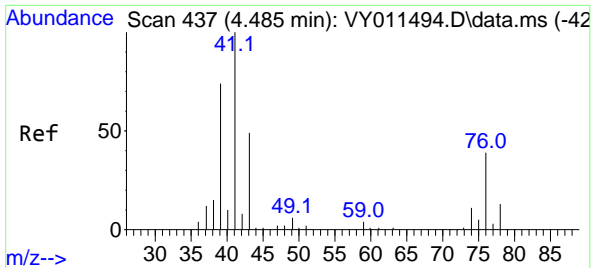
Tgt Ion: 59 Resp: 2598  
 Ion Ratio Lower Upper  
 59 100  
 57 0.0 6.4 9.6#



#16  
 Acetone  
 Concen: 2.286 ug/l  
 RT: 3.954 min Scan# 350  
 Delta R.T. 0.006 min  
 Lab File: VY011698.D  
 Acq: 05 Dec 2022 15:52

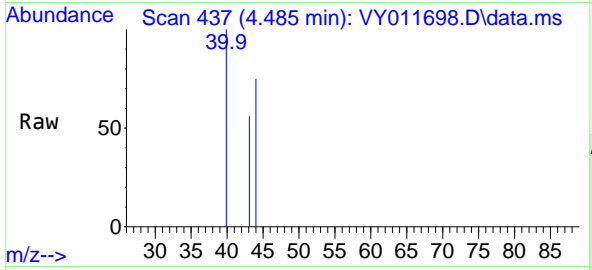
Tgt Ion: 43 Resp: 1038  
 Ion Ratio Lower Upper  
 43 100  
 58 42.1 22.0 33.0#



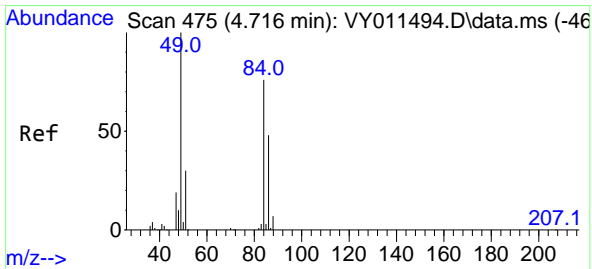
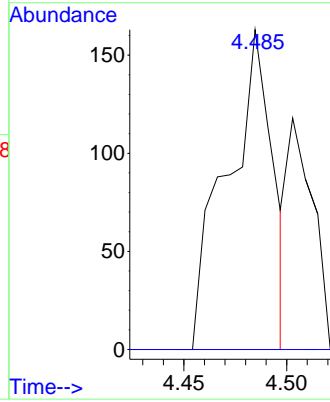
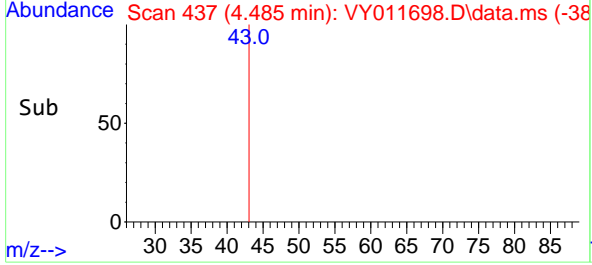


#18  
Methyl Acetate  
Concen: Below Cal  
RT: 4.485 min Scan# 41  
Delta R.T. -0.000 min  
Lab File: VY011698.D  
Acq: 05 Dec 2022 15:52

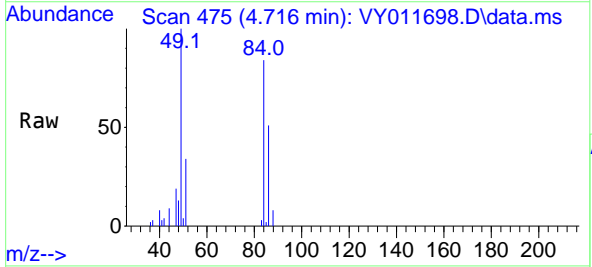
Instrument : MSVOA\_Y  
ClientSampleId : SU-4-120222



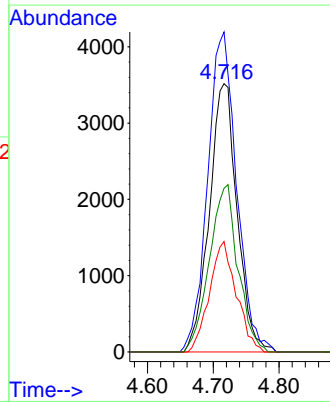
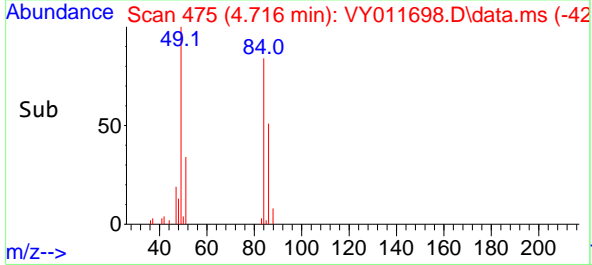
Tgt Ion: 43 Resp: 252  
Ion Ratio Lower Upper  
43 100  
74 0.0 16.6 24.8#

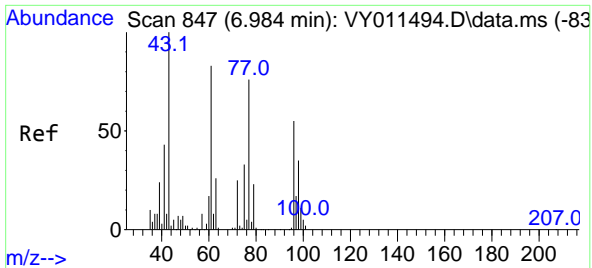


#20  
Methylene Chloride  
Concen: Below Cal  
RT: 4.716 min Scan# 475  
Delta R.T. 0.000 min  
Lab File: VY011698.D  
Acq: 05 Dec 2022 15:52



Tgt Ion: 84 Resp: 10366  
Ion Ratio Lower Upper  
84 100  
49 119.3 114.4 171.6  
51 41.1 35.3 52.9  
86 61.0 53.7 80.5



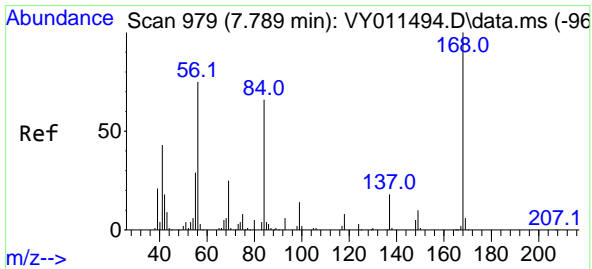
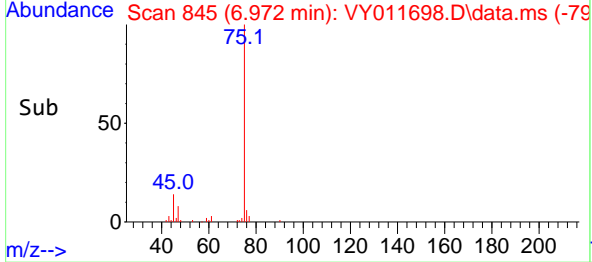
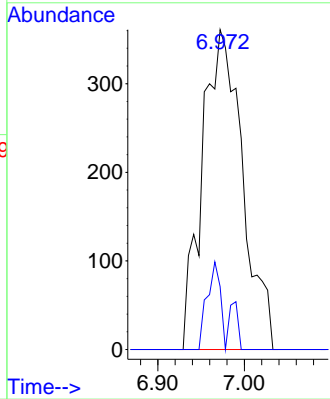
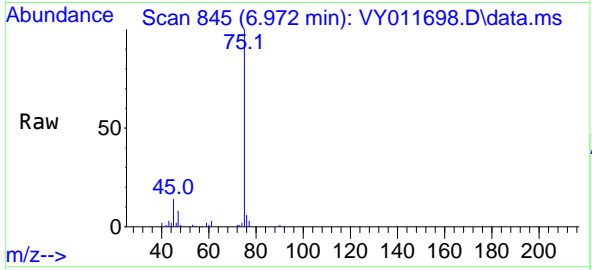


#25  
 2-Butanone  
 Concen: 1.954 ug/l  
 RT: 6.972 min Scan# 847  
 Delta R.T. -0.012 min  
 Lab File: VY011698.D  
 Acq: 05 Dec 2022 15:52

Instrument : MSVOA\_Y  
 ClientSampleId : SU-4-120222

Tgt Ion: 43 Resp: 1166

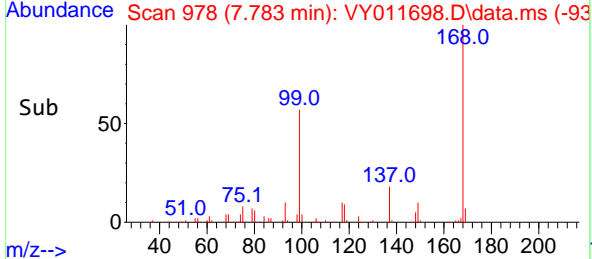
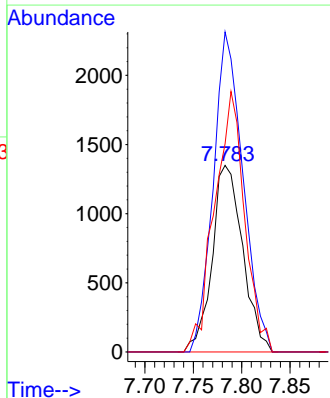
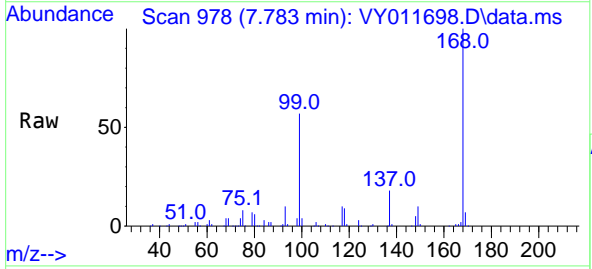
Ion	Ratio	Lower	Upper
43	100		
72	19.7	17.7	26.5

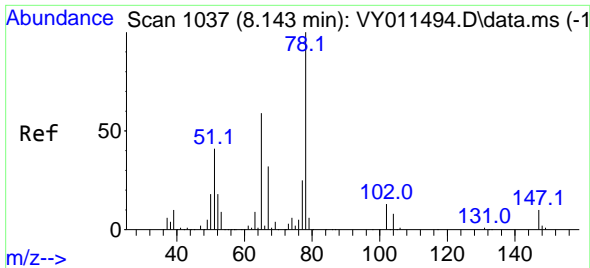


#31  
 Cyclohexane  
 Concen: 1.278 ug/l  
 RT: 7.783 min Scan# 978  
 Delta R.T. -0.006 min  
 Lab File: VY011698.D  
 Acq: 05 Dec 2022 15:52

Tgt Ion: 56 Resp: 2961

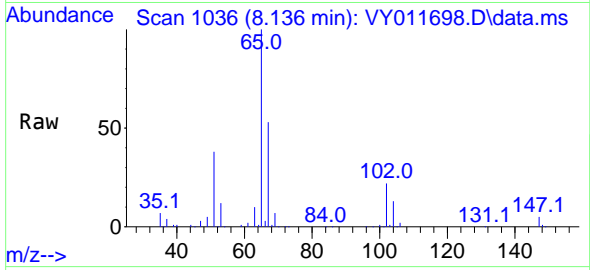
Ion	Ratio	Lower	Upper
56	100		
69	171.5	26.7	40.1#
84	111.6	67.2	100.8#



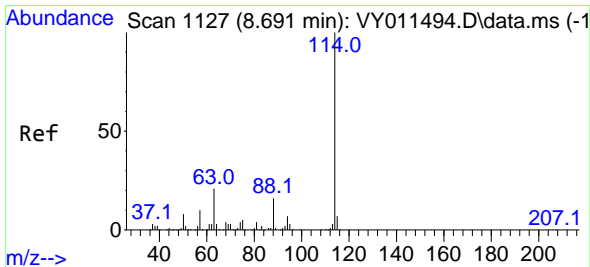
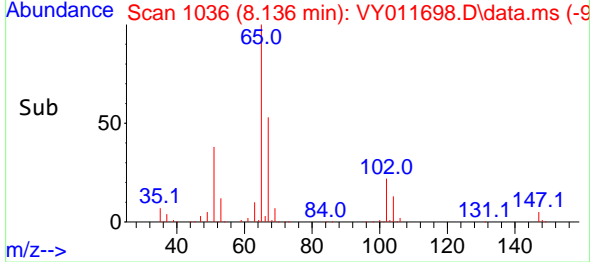
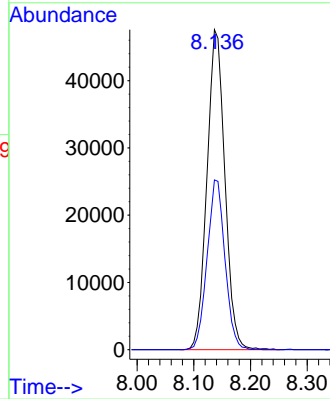


#33  
 1,2-Dichloroethane-d4  
 Concen: 74.689 ug/l  
 RT: 8.136 min Scan# 1036  
 Delta R.T. -0.007 min  
 Lab File: VY011698.D  
 Acq: 05 Dec 2022 15:52

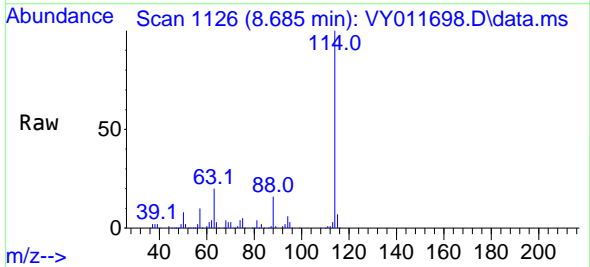
Instrument : MSVOA\_Y  
 ClientSampleId : SU-4-120222



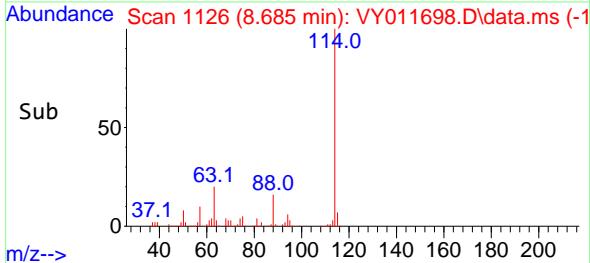
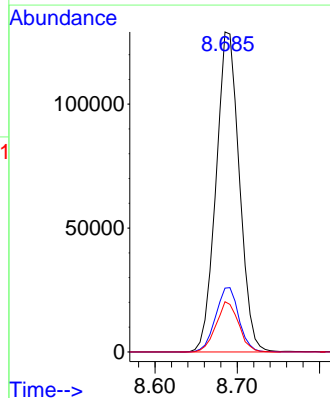
Tgt Ion: 65 Resp: 104402  
 Ion Ratio Lower Upper  
 65 100  
 67 52.8 0.0 99.4



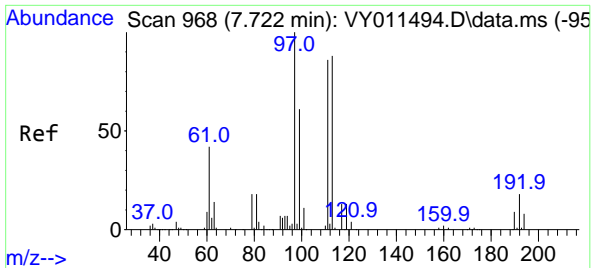
#34  
 1,4-Difluorobenzene  
 Concen: 50.000 ug/l  
 RT: 8.685 min Scan# 1126  
 Delta R.T. -0.006 min  
 Lab File: VY011698.D  
 Acq: 05 Dec 2022 15:52



Tgt Ion: 114 Resp: 254450  
 Ion Ratio Lower Upper  
 114 100  
 63 19.9 0.0 43.2  
 88 15.7 0.0 31.8

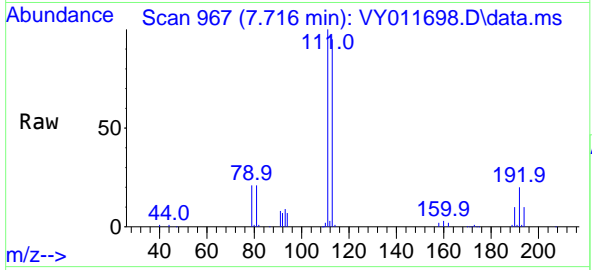




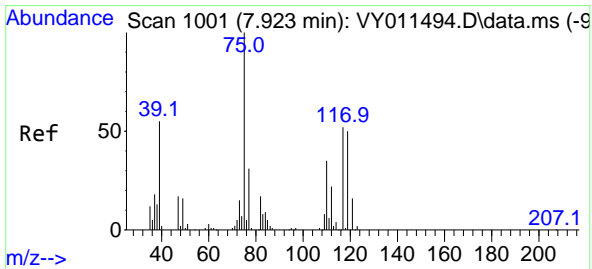
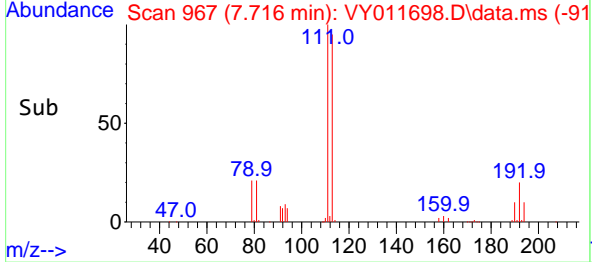
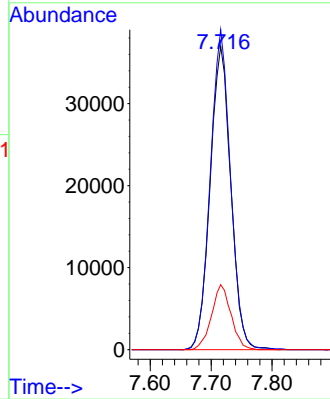


#35  
 Dibromofluoromethane  
 Concen: 55.532 ug/l  
 RT: 7.716 min Scan# 90  
 Delta R.T. -0.006 min  
 Lab File: VY011698.D  
 Acq: 05 Dec 2022 15:52

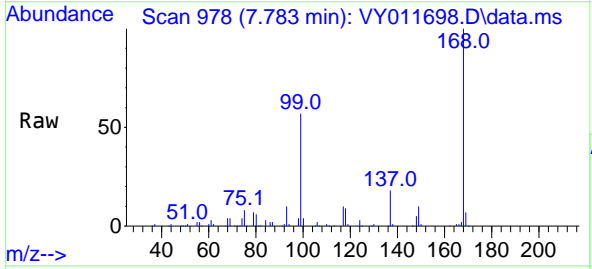
Instrument : MSVOA\_Y  
 ClientSampleId : SU-4-120222



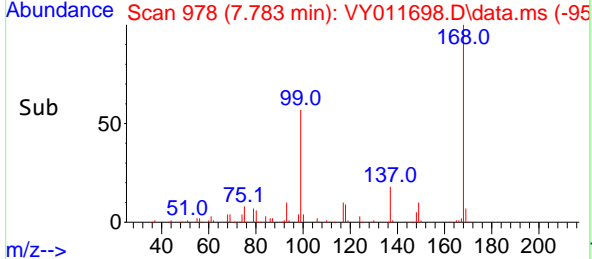
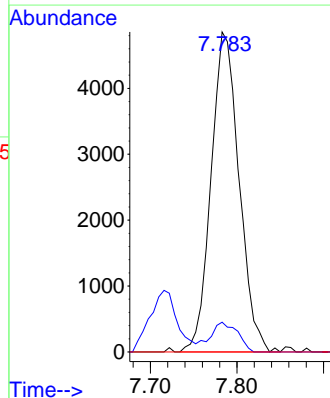
Tgt Ion:113 Resp: 86984  
 Ion Ratio Lower Upper  
 113 100  
 111 103.2 82.6 124.0  
 192 20.3 17.6 26.4

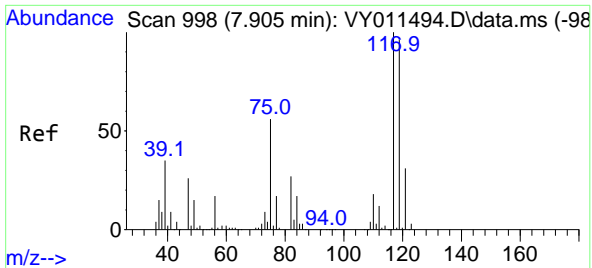


#36  
 1,1-Dichloropropene  
 Concen: 4.459 ug/l  
 RT: 7.783 min Scan# 978  
 Delta R.T. -0.140 min  
 Lab File: VY011698.D  
 Acq: 05 Dec 2022 15:52



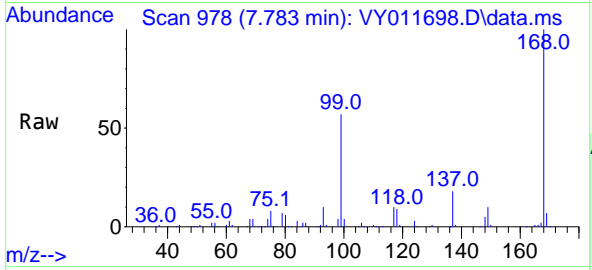
Tgt Ion: 75 Resp: 10918  
 Ion Ratio Lower Upper  
 75 100  
 110 9.1 17.1 51.2#  
 77 0.0 24.4 36.6#





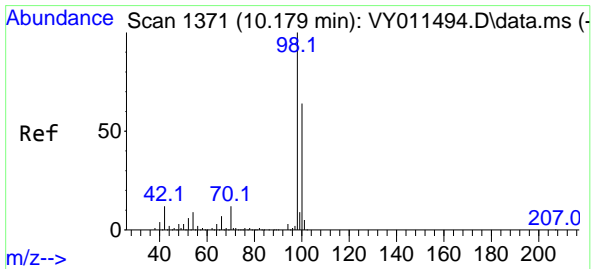
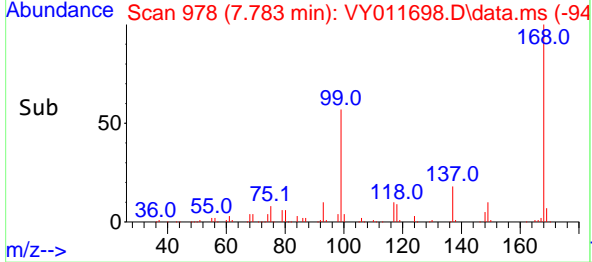
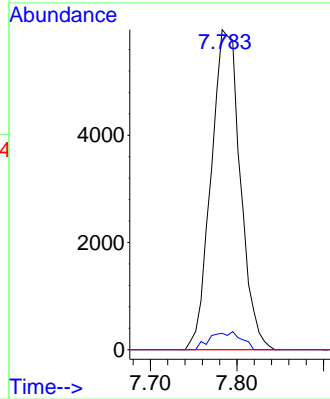
#38  
 Carbon Tetrachloride  
 Concen: 5.103 ug/l  
 RT: 7.783 min Scan# 91  
 Delta R.T. -0.122 min  
 Lab File: VY011698.D  
 Acq: 05 Dec 2022 15:52

Instrument : MSVOA\_Y  
 ClientSampleId : SU-4-120222



Tgt Ion: 117 Resp: 13979

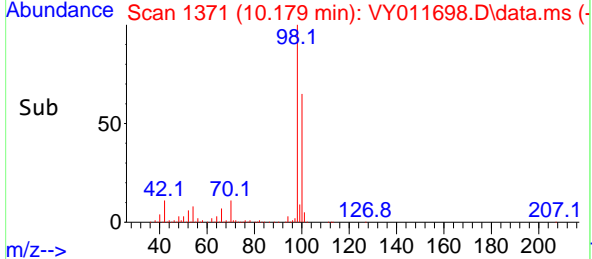
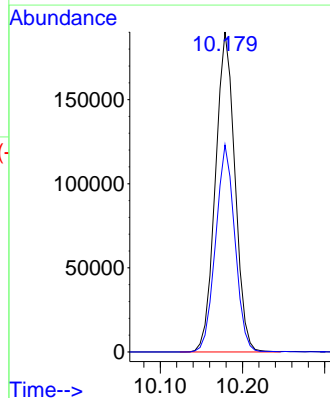
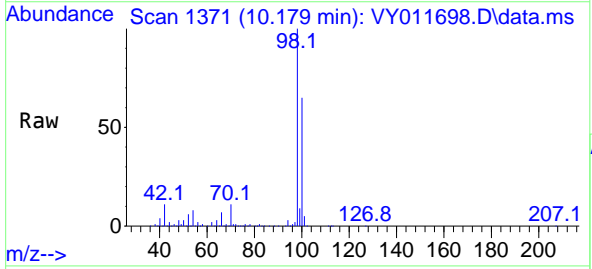
Ion	Ratio	Lower	Upper
117	100		
119	5.1	77.9	116.9#
121	0.0	24.8	37.2#

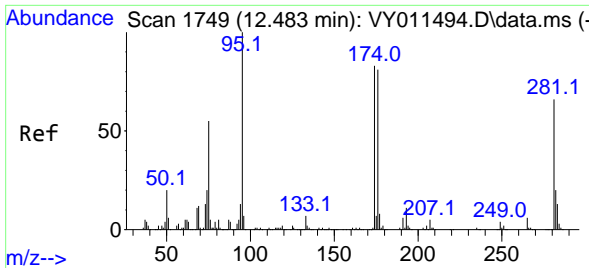


#50  
 Toluene-d8  
 Concen: 55.121 ug/l  
 RT: 10.179 min Scan# 1371  
 Delta R.T. -0.000 min  
 Lab File: VY011698.D  
 Acq: 05 Dec 2022 15:52

Tgt Ion: 98 Resp: 313753

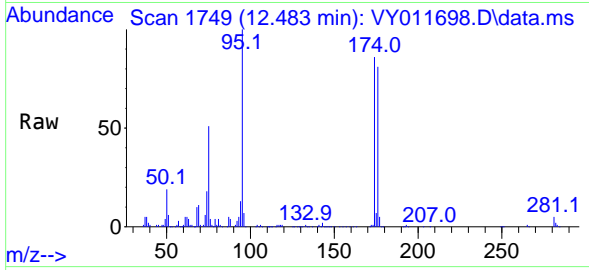
Ion	Ratio	Lower	Upper
98	100		
100	63.9	50.2	75.2



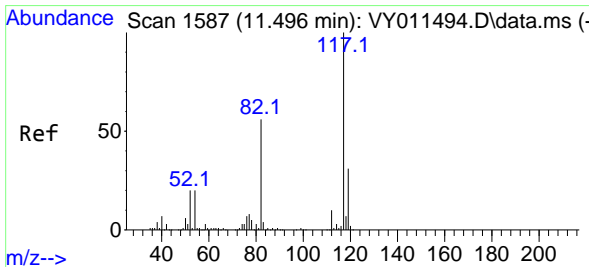
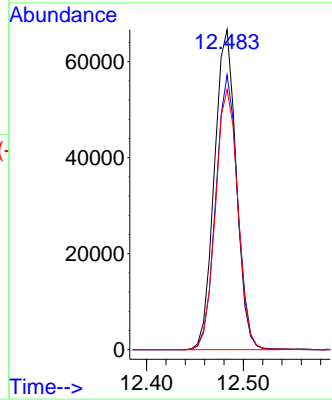
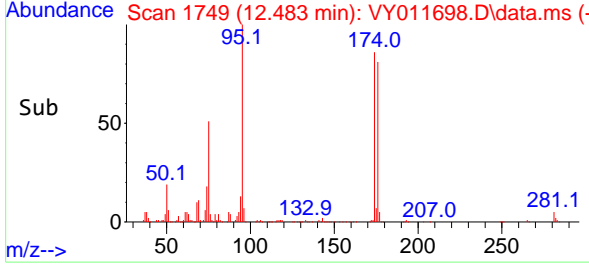


#62  
 4-Bromofluorobenzene  
 Concen: 49.499 ug/l  
 RT: 12.483 min Scan# 11  
 Delta R.T. 0.000 min  
 Lab File: VY011698.D  
 Acq: 05 Dec 2022 15:52

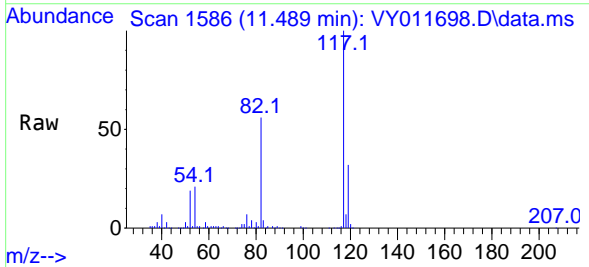
Instrument :  
 MSVOA\_Y  
 ClientSampleId :  
 SU-4-120222



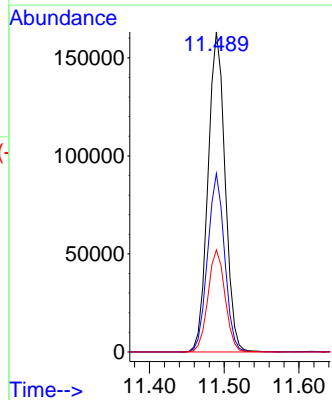
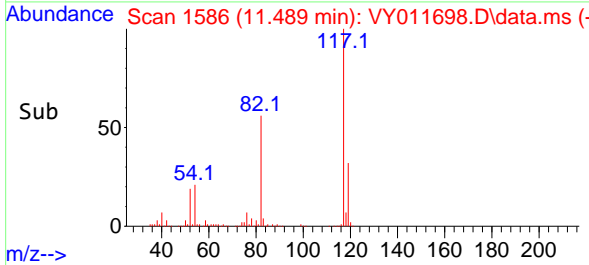
Tgt Ion: 95 Resp: 104173  
 Ion Ratio Lower Upper  
 95 100  
 174 86.0 0.0 177.0  
 176 83.5 0.0 175.8

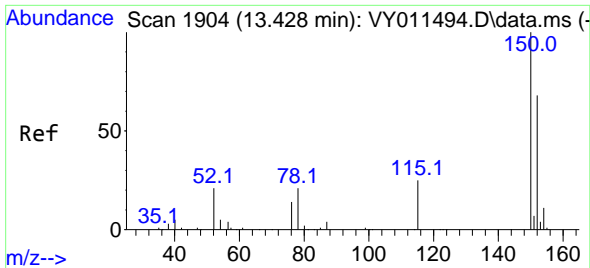


#63  
 Chlorobenzene-d5  
 Concen: 50.000 ug/l  
 RT: 11.489 min Scan# 1586  
 Delta R.T. -0.007 min  
 Lab File: VY011698.D  
 Acq: 05 Dec 2022 15:52



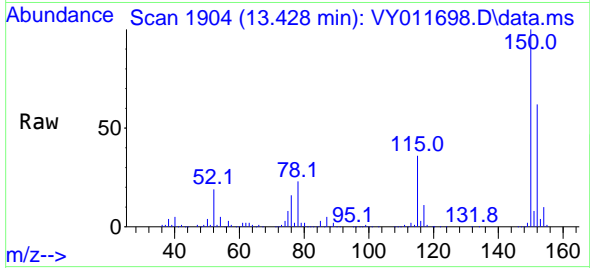
Tgt Ion: 117 Resp: 259559  
 Ion Ratio Lower Upper  
 117 100  
 82 55.7 43.0 64.4  
 119 31.9 25.4 38.0



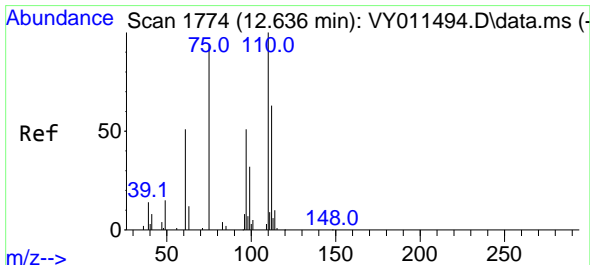
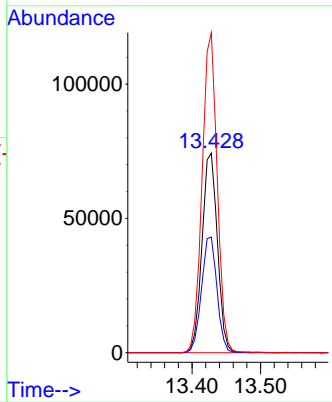
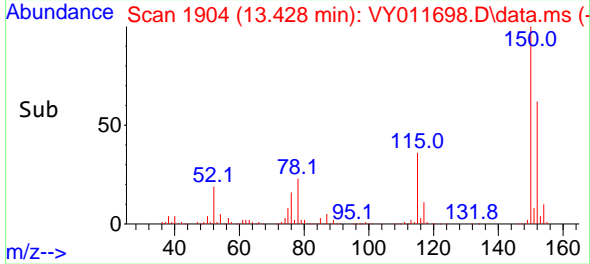


#72  
 1,4-Dichlorobenzene-d4  
 Concen: 50.000 ug/l  
 RT: 13.428 min Scan# 11  
 Delta R.T. 0.000 min  
 Lab File: VY011698.D  
 Acq: 05 Dec 2022 15:52

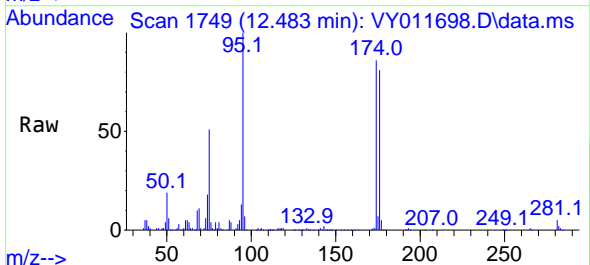
Instrument :  
 MSVOA\_Y  
 ClientSampleId :  
 SU-4-120222



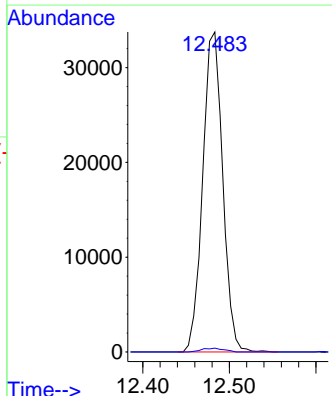
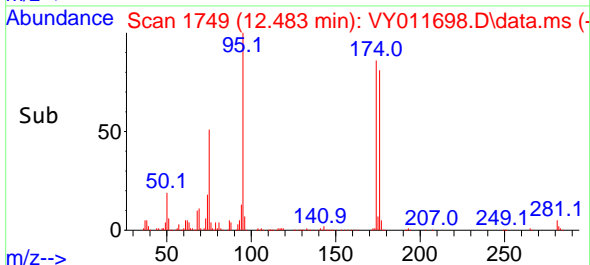
Tgt Ion:152 Resp: 116365  
 Ion Ratio Lower Upper  
 152 100  
 115 58.2 28.2 84.7  
 150 157.1 0.0 347.6

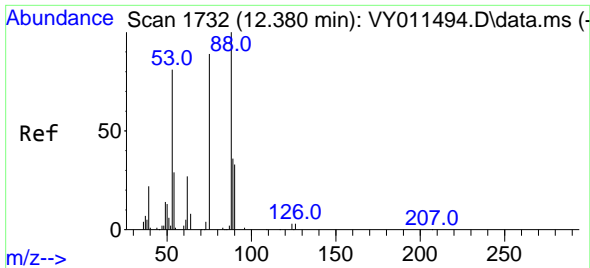


#76  
 1,2,3-Trichloropropane  
 Concen: 43.172 ug/l  
 RT: 12.483 min Scan# 1749  
 Delta R.T. -0.153 min  
 Lab File: VY011698.D  
 Acq: 05 Dec 2022 15:52



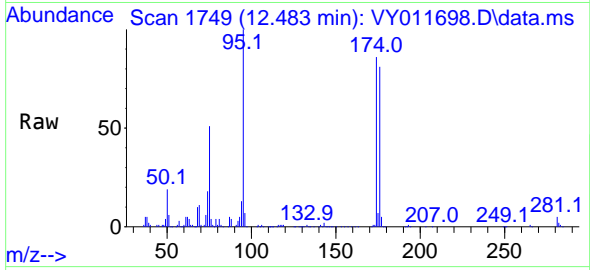
Tgt Ion: 75 Resp: 54102  
 Ion Ratio Lower Upper  
 75 100  
 77 1.3 0.0 0.0#



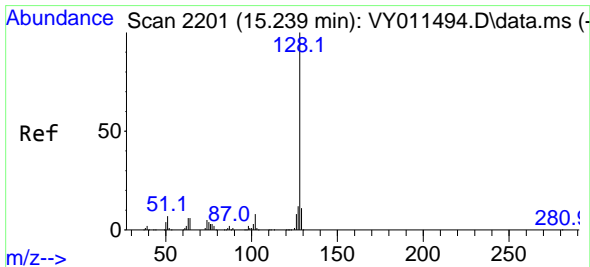
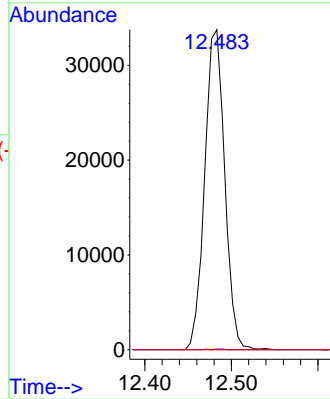
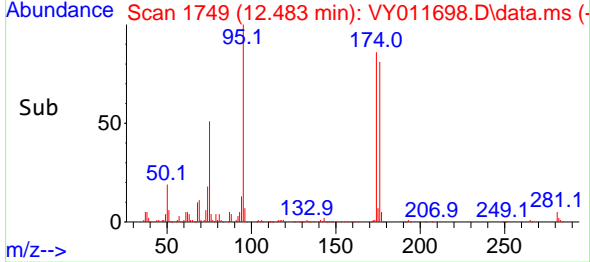


#81  
 trans-1,4-Dichloro-2-butene  
 Concen: 94.561 ug/l  
 RT: 12.483 min Scan# 11  
 Delta R.T. 0.103 min  
 Lab File: VY011698.D  
 Acq: 05 Dec 2022 15:52

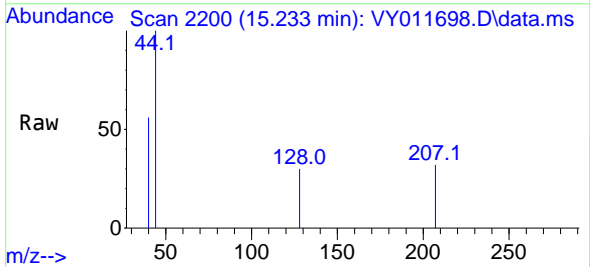
Instrument :  
 MSVOA\_Y  
 ClientSampleId :  
 SU-4-120222



Tgt Ion: 75 Resp: 54102  
 Ion Ratio Lower Upper  
 75 100  
 53 0.1 85.3 127.9#  
 89 0.0 37.0 55.4#



#95  
 Naphthalene  
 Concen: 4.075 ug/l  
 RT: 15.233 min Scan# 2200  
 Delta R.T. -0.006 min  
 Lab File: VY011698.D  
 Acq: 05 Dec 2022 15:52



Tgt Ion:128 Resp: 246  
 Ion Ratio Lower Upper  
 128 100  
 127 0.0 11.0 16.4#  
 129 0.0 8.4 12.6#

