

Data Path : Z:\voasrv\HPCHEM1\MSVOA\_Y\Data\VY120522\  
 Data File : VY011700.D  
 Acq On : 05 Dec 2022 16:39  
 Operator : KP/MD  
 Sample : N5870-01RE  
 Misc : 5.03g/5.0mL/MSVOA\_Y/SOIL  
 ALS Vial : 16 Sample Multiplier: 1

Instrument :  
 MSVOA\_Y  
 ClientSampleId :  
 ML-1RE

Quant Time: Dec 06 00:37:20 2022  
 Quant Method : Z:\voasrv\HPCHEM1\MSVOA\_Y\methods\82Y111822S.M  
 Quant Title : SW846 8260  
 QLast Update : Sat Nov 19 22:37:14 2022  
 Response via : Initial Calibration

Compound	R.T.	QIon	Response	Conc	Units	Dev(Min)
Internal Standards						
1) Pentafluorobenzene	0.000	168	0	0.000	ug/l	-7.79
34) 1,4-Difluorobenzene	0.000	114	0	0.000	ug/l	-8.69
63) Chlorobenzene-d5	0.000	117	0	0.000	ug/l	-11.50
72) 1,4-Dichlorobenzene-d4	0.000	152	0	0.000	ug/l	-13.43
System Monitoring Compounds						
33) 1,2-Dichloroethane-d4	0.000	65	0	0.000	ug/l	
Spiked Amount	50.000	Range	50 - 163	Recovery	=	0.000%#
35) Dibromofluoromethane	0.000	113	0	0.000	ug/l	
Spiked Amount	50.000	Range	54 - 147	Recovery	=	0.000%#
50) Toluene-d8	0.000	98	0	0.000	ug/l	
Spiked Amount	50.000	Range	49 - 140	Recovery	=	0.000%#
62) 4-Bromofluorobenzene	0.000	95	0	0.000	ug/l	
Spiked Amount	50.000	Range	25 - 144	Recovery	=	0.000%#

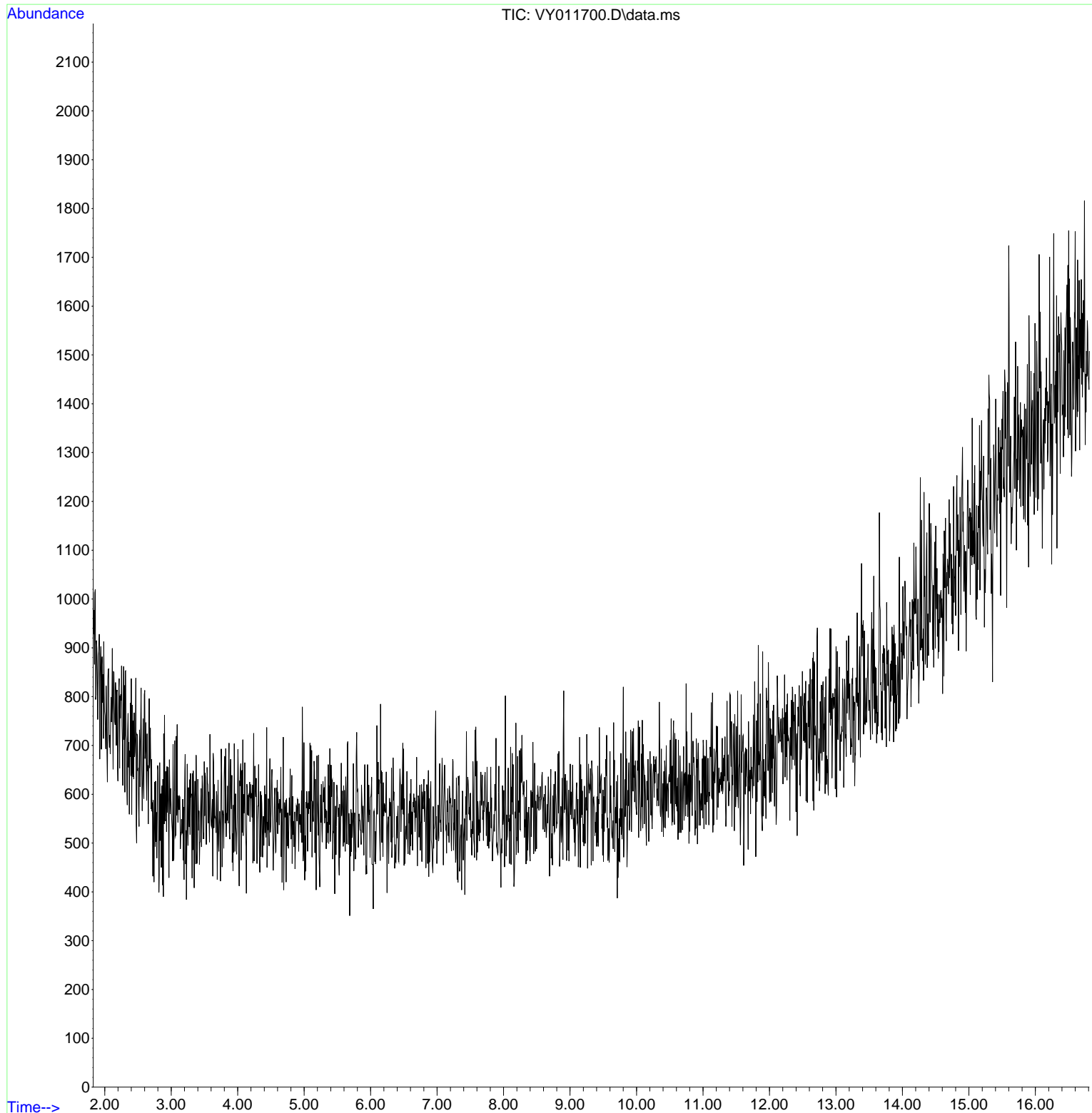
Target Compounds Qvalue

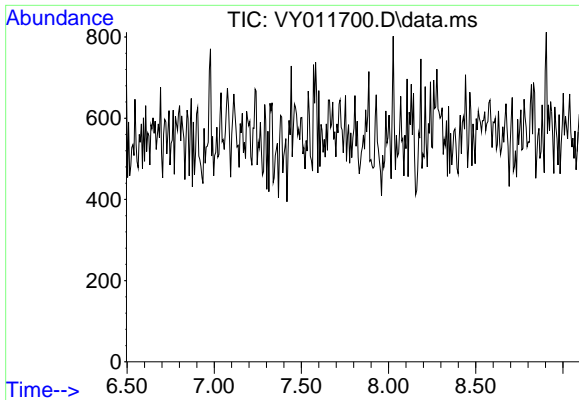
(#) = qualifier out of range (m) = manual integration (+) = signals summed

Data Path : Z:\voasrv\HPCHEM1\MSVOA\_Y\Data\VY120522\  
 Data File : VY011700.D  
 Acq On : 05 Dec 2022 16:39  
 Operator : KP/MD  
 Sample : N5870-01RE  
 Misc : 5.03g/5.0mL/MSVOA\_Y/SOIL  
 ALS Vial : 16 Sample Multiplier: 1

**Instrument :**  
 MSVOA\_Y  
**ClientSampleId :**  
 ML-1RE

Quant Time: Dec 06 00:37:20 2022  
 Quant Method : Z:\voasrv\HPCHEM1\MSVOA\_Y\methods\82Y111822S.M  
 Quant Title : SW846 8260  
 QLast Update : Sat Nov 19 22:37:14 2022  
 Response via : Initial Calibration

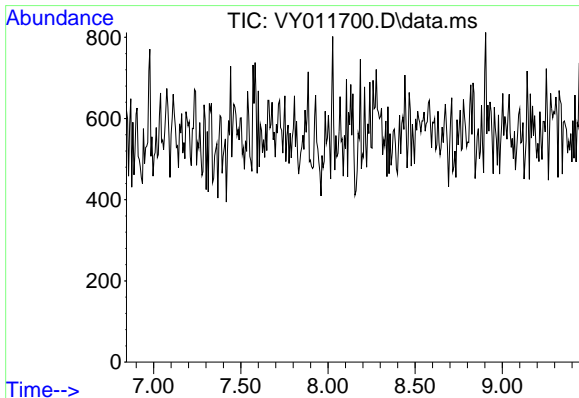
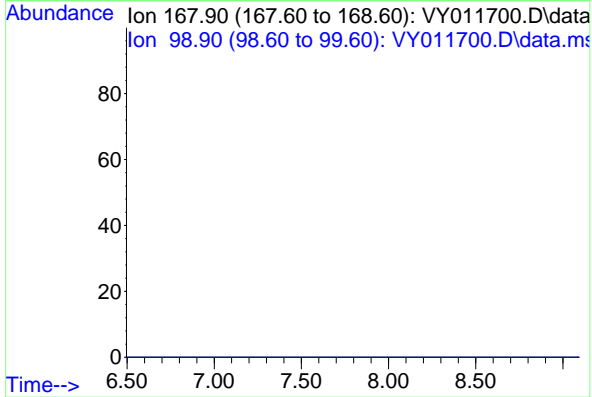




#1  
 Pentafluorobenzene  
 Concen: 0.000 ug/l  
 Expected RT: 7.79 min  
 Lab File: VY011700.D  
 Acq: 05 Dec 2022 16:39

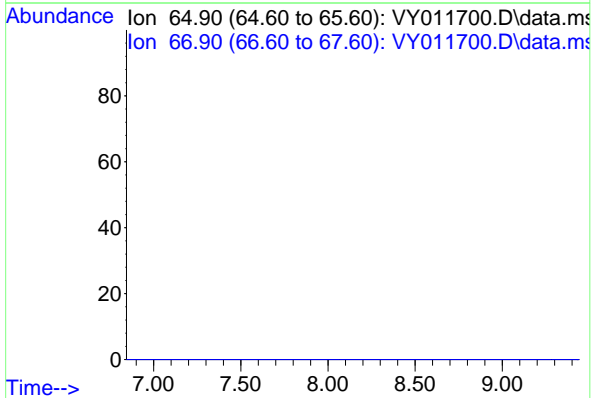
**Instrument :**  
 MSVOA\_Y  
**ClientSampleId :**  
 ML-1RE

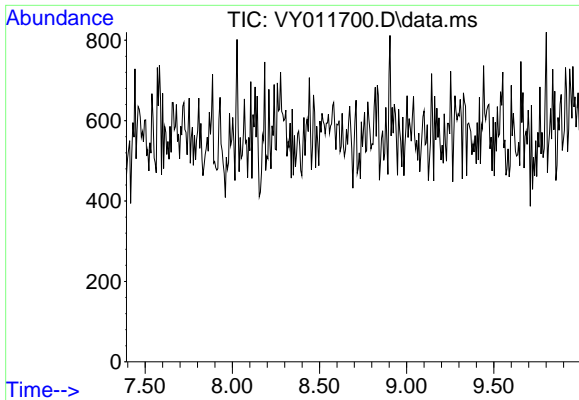
Tgt Ion: 168  
 Sig Exp Ratio  
 168 100  
 99 58.6



#33  
 1,2-Dichloroethane-d4  
 Concen: 0.000 ug/l  
 Expected RT: 8.14 min  
 Lab File: VY011700.D  
 Acq: 05 Dec 2022 16:39

Tgt Ion: 65  
 Sig Exp Ratio  
 65 100  
 67 49.7



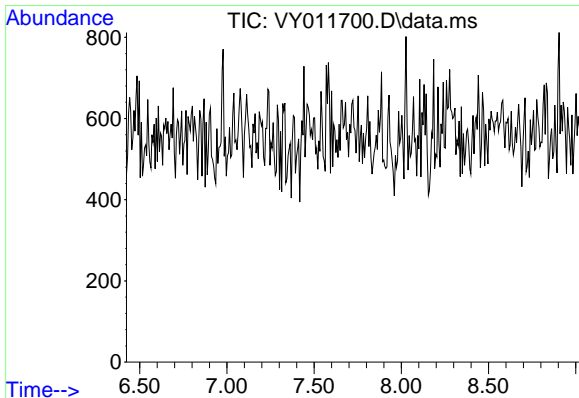
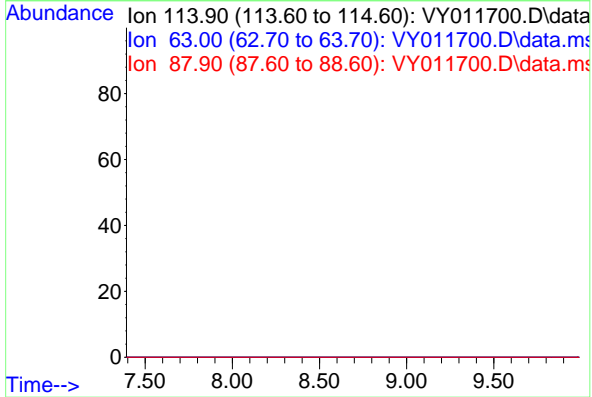


#34  
 1,4-Difluorobenzene  
 Concen: 0.000 ug/l  
 Expected RT: 8.69 min  
 Lab File: VY011700.D  
 Acq: 05 Dec 2022 16:39

**Instrument :**  
 MSVOA\_Y  
**ClientSampleId :**  
 ML-1RE

Tgt Ion: 114  

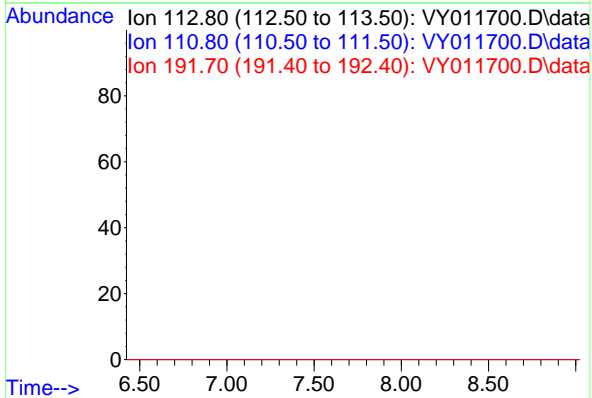
Sig	Exp Ratio
114	100
63	21.6
88	15.9

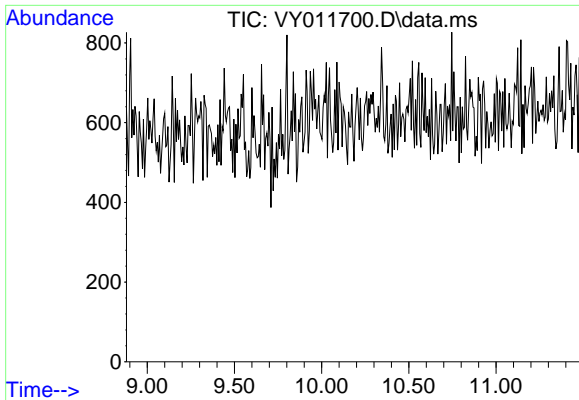


#35  
 Dibromofluoromethane  
 Concen: 0.000 ug/l  
 Expected RT: 7.72 min  
 Lab File: VY011700.D  
 Acq: 05 Dec 2022 16:39

Tgt Ion: 113  

Sig	Exp Ratio
113	100
111	103.3
192	22.0

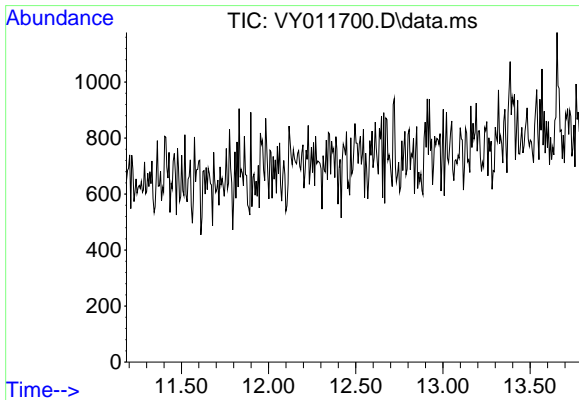
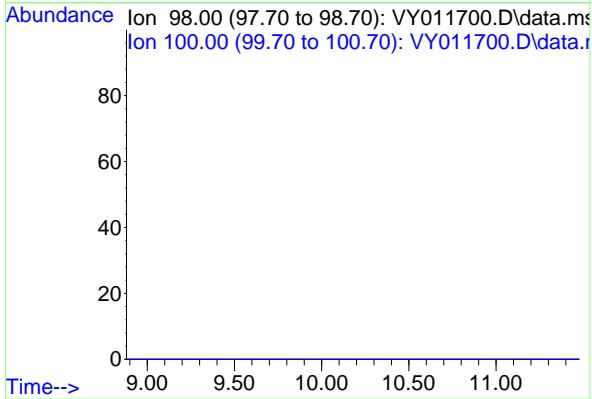




#50  
 Toluene-d8  
 Concen: 0.000 ug/l  
 Expected RT: 10.18 min  
 Lab File: VY011700.D  
 Acq: 05 Dec 2022 16:39

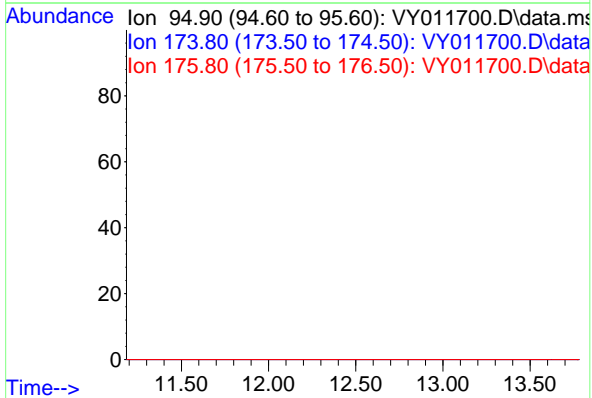
Instrument :  
 MSVOA\_Y  
 ClientSampleId :  
 ML-1RE

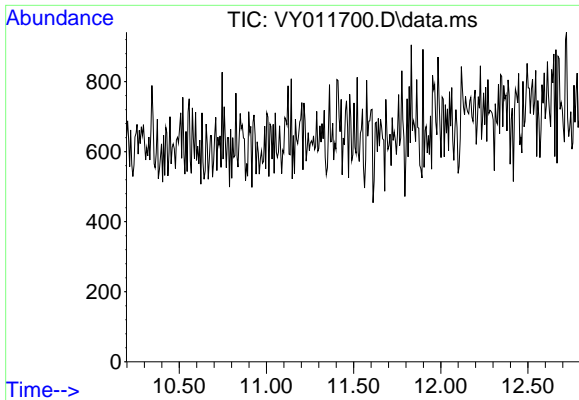
Tgt Ion: 98  
 Sig Exp Ratio  
 98 100  
 100 62.7



#62  
 4-Bromofluorobenzene  
 Concen: 0.000 ug/l  
 Expected RT: 12.48 min  
 Lab File: VY011700.D  
 Acq: 05 Dec 2022 16:39

Tgt Ion: 95  
 Sig Exp Ratio  
 95 100  
 174 88.5  
 176 87.9



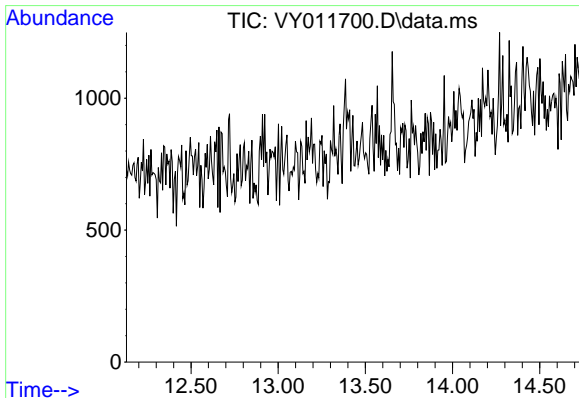
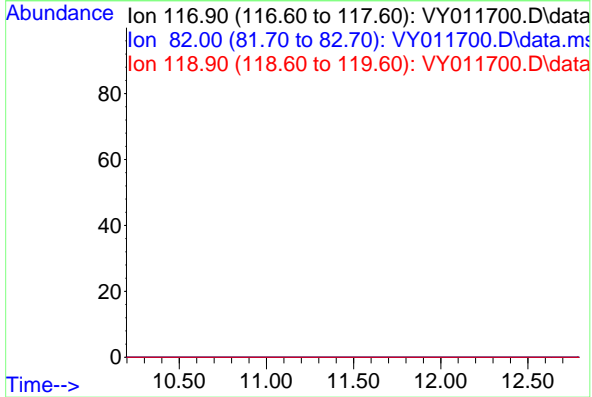


#63  
 Chlorobenzene-d5  
 Concen: 0.000 ug/l  
 Expected RT: 11.50 min  
 Lab File: VY011700.D  
 Acq: 05 Dec 2022 16:39

Instrument :  
 MSVOA\_Y  
 ClientSampleId :  
 ML-1RE

Tgt Ion: 117  

Sig	Exp Ratio
117	100
82	53.7
119	31.7



#72  
 1,4-Dichlorobenzene-d4  
 Concen: 0.000 ug/l  
 Expected RT: 13.43 min  
 Lab File: VY011700.D  
 Acq: 05 Dec 2022 16:39

Tgt Ion: 152  

Sig	Exp Ratio
152	100
115	56.5
150	173.8

