

Data Path : Z:\voasrv\HPCHEM1\MSVOA_Y\Data\VY120623\
 Data File : VY016608.D
 Acq On : 06 Dec 2023 11:52
 Operator : SY/MD
 Sample : VY1206SBL01
 Misc : 5.00g/5.0mL/MSVOA_Y/SOIL
 ALS Vial : 6 Sample Multiplier: 1

Instrument :
 MSVOA_Y
 ClientSampleId :
 VY1206SBL01

Quant Time: Dec 07 00:30:05 2023
 Quant Method : Z:\voasrv\HPCHEM1\MSVOA_Y\methods\82Y120423S.M
 Quant Title : SW846 8260
 QLast Update : Tue Dec 05 01:24:25 2023
 Response via : Initial Calibration

Compound	R.T.	QIon	Response	Conc	Units	Dev(Min)

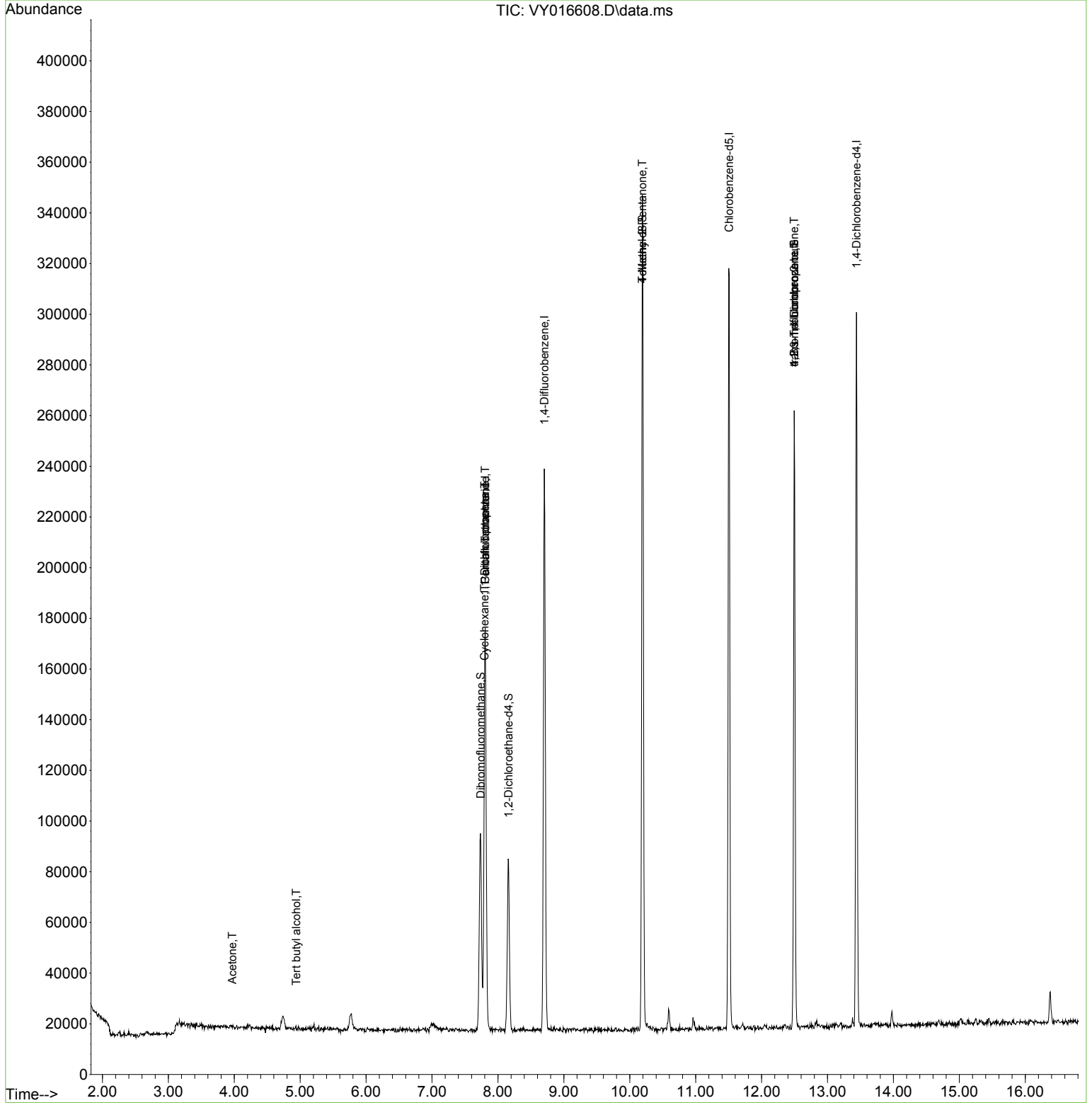
Internal Standards						
1) Pentafluorobenzene	7.807	168	128766	50.000	ug/l	0.00
34) 1,4-Difluorobenzene	8.703	114	194514	50.000	ug/l	0.00
63) Chlorobenzene-d5	11.508	117	173114	50.000	ug/l	0.00
72) 1,4-Dichlorobenzene-d4	13.440	152	76280	50.000	ug/l	0.00
System Monitoring Compounds						
33) 1,2-Dichloroethane-d4	8.161	65	56682	47.626	ug/l	0.00
Spiked Amount	50.000	Range	50 - 163	Recovery	=	95.260%
35) Dibromofluoromethane	7.740	113	54760	46.780	ug/l	0.00
Spiked Amount	50.000	Range	54 - 147	Recovery	=	93.560%
50) Toluene-d8	10.191	98	220783	49.863	ug/l	0.00
Spiked Amount	50.000	Range	58 - 134	Recovery	=	99.720%
62) 4-Bromofluorobenzene	12.495	95	70159	48.183	ug/l	0.00
Spiked Amount	50.000	Range	30 - 143	Recovery	=	96.360%
Target Compounds						
					Qvalue	
11) Tert butyl alcohol	4.942	59	348	4.292	ug/l #	89
16) Acetone	3.973	43	457	1.697	ug/l #	46
31) Cyclohexane	7.795	56	2060	1.014	ug/l #	5
36) 1,1-Dichloropropene	7.801	75	8504	4.779	ug/l #	51
38) Carbon Tetrachloride	7.807	117	12633	6.133	ug/l #	16
51) 4-Methyl-2-Pentanone	10.191	43	885	1.186	ug/l #	1
76) 1,2,3-Trichloropropane	12.495	75	37296	54.126	ug/l #	100
81) trans-1,4-Dichloro-2-b...	12.495	75	37296	122.098	ug/l #	11
95) Naphthalene	15.251	128	1768	Below Cal	#	91
96) 1,2,3-Trichlorobenzene	15.446	180	873	Below Cal		92

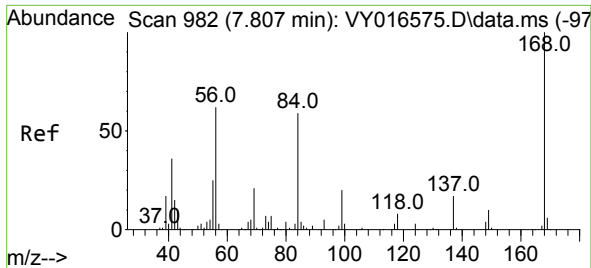
(#) = qualifier out of range (m) = manual integration (+) = signals summed

Data Path : Z:\voasrv\HPCHEM1\MSVOA_Y\Data\VY120623\
 Data File : VY016608.D
 Acq On : 06 Dec 2023 11:52
 Operator : SY/MD
 Sample : VY1206SBL01
 Misc : 5.00g/5.0mL/MSVOA_Y/SOIL
 ALS Vial : 6 Sample Multiplier: 1

Instrument :
 MSVOA_Y
 ClientSampleId :
 VY1206SBL01

Quant Time: Dec 07 00:30:05 2023
 Quant Method : Z:\voasrv\HPCHEM1\MSVOA_Y\methods\82Y120423S.M
 Quant Title : SW846 8260
 QLast Update : Tue Dec 05 01:24:25 2023
 Response via : Initial Calibration

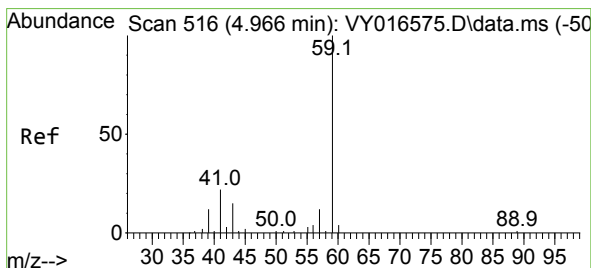
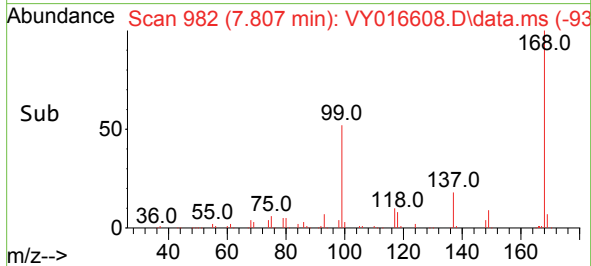
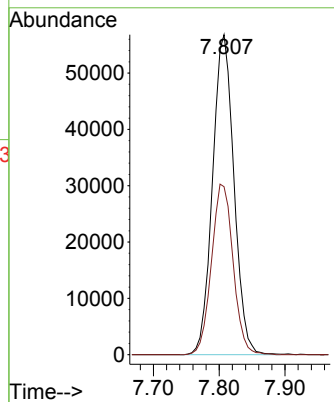
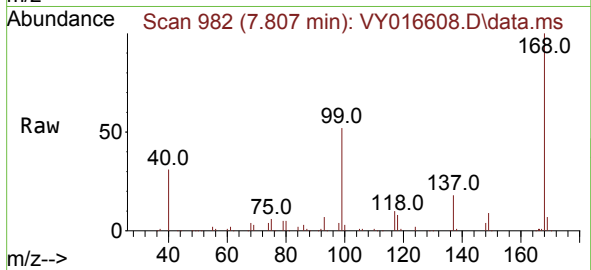




#1
 Pentafluorobenzene
 Concen: 50.000 ug/l
 RT: 7.807 min Scan# 99
 Delta R.T. 0.000 min
 Lab File: VY016608.D
 Acq: 06 Dec 2023 11:52

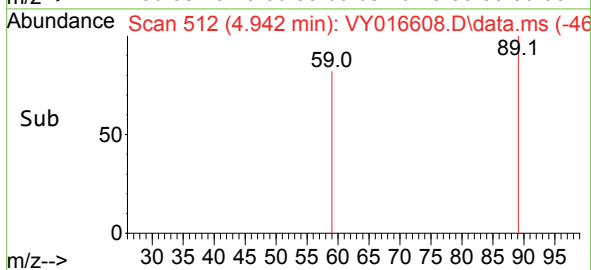
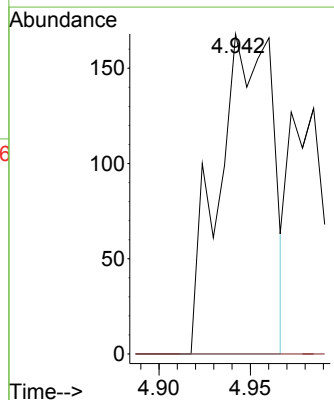
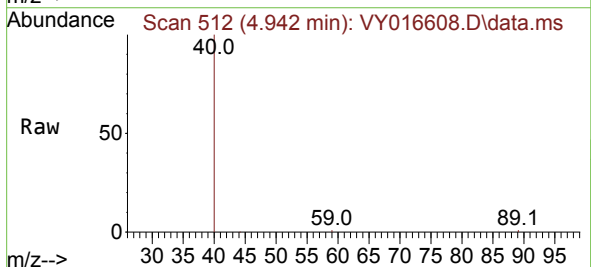
Instrument : MSVOA_Y
 ClientSampleId : VY1206SBL01

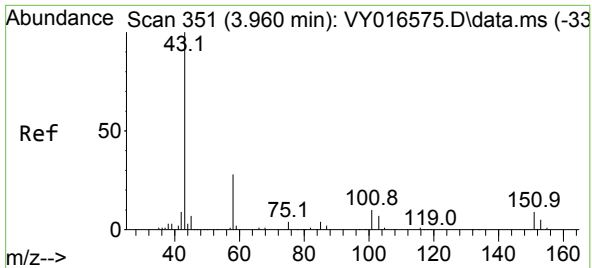
Tgt Ion:168 Resp: 128766
 Ion Ratio Lower Upper
 168 100
 99 52.5 43.4 65.0



#11
 Tert butyl alcohol
 Concen: 4.292 ug/l
 RT: 4.942 min Scan# 512
 Delta R.T. -0.024 min
 Lab File: VY016608.D
 Acq: 06 Dec 2023 11:52

Tgt Ion: 59 Resp: 348
 Ion Ratio Lower Upper
 59 100
 57 0.0 3.0 4.4#

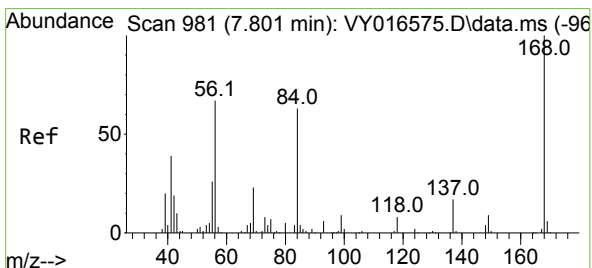
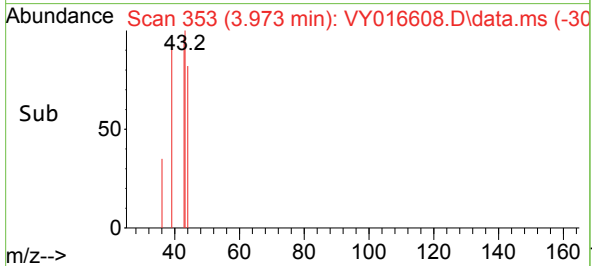
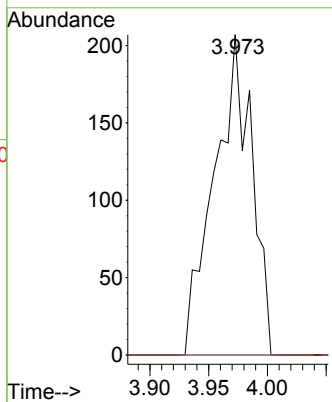
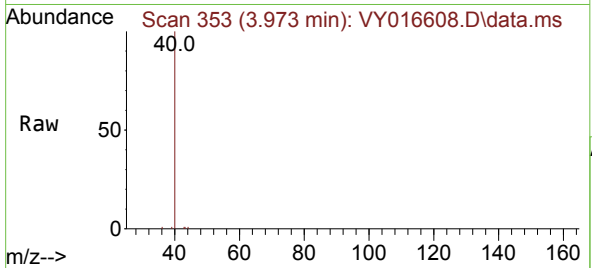




#16
 Acetone
 Concen: 1.697 ug/l
 RT: 3.973 min Scan# 31
 Delta R.T. 0.013 min
 Lab File: VY016608.D
 Acq: 06 Dec 2023 11:52

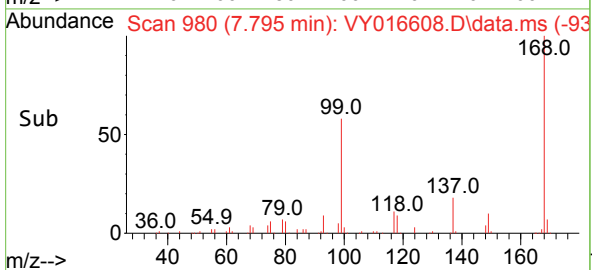
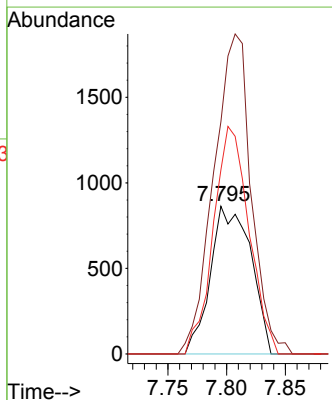
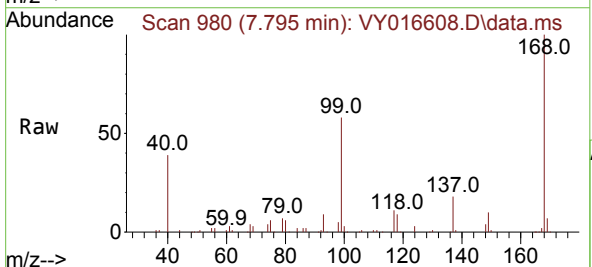
Instrument :
 MSVOA_Y
 ClientSampleId :
 VY1206SBL01

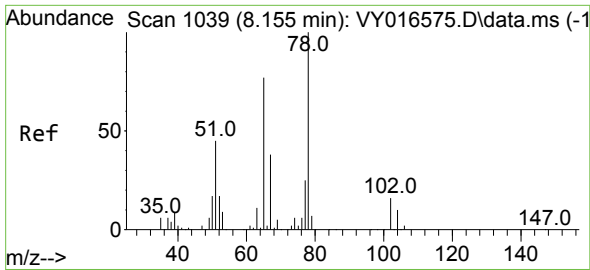
Tgt Ion: 43 Resp: 457
 Ion Ratio Lower Upper
 43 100
 58 0.0 22.7 34.1#



#31
 Cyclohexane
 Concen: 1.014 ug/l
 RT: 7.795 min Scan# 980
 Delta R.T. -0.006 min
 Lab File: VY016608.D
 Acq: 06 Dec 2023 11:52

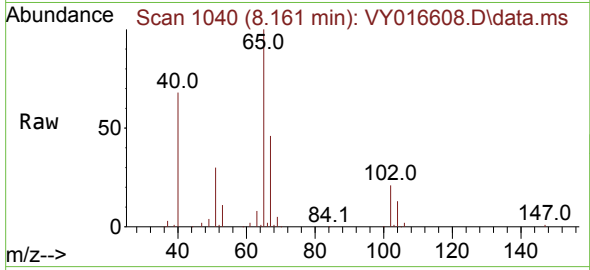
Tgt Ion: 56 Resp: 2060
 Ion Ratio Lower Upper
 56 100
 69 157.4 27.8 41.6#
 84 124.7 66.4 99.6#



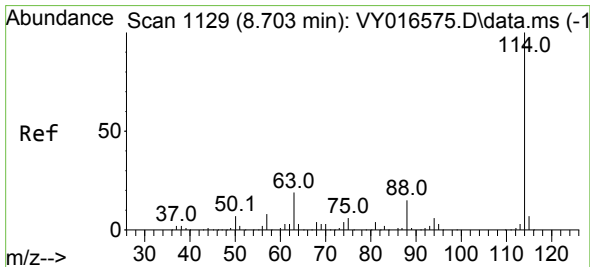
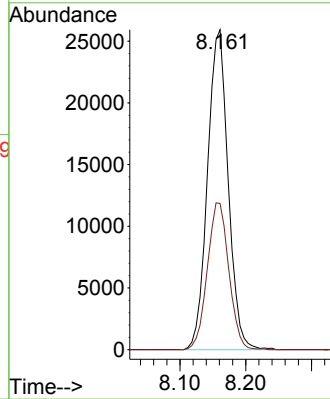
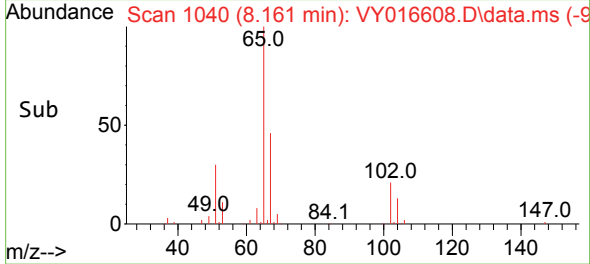


#33
 1,2-Dichloroethane-d4
 Concen: 47.626 ug/l
 RT: 8.161 min Scan# 1040
 Delta R.T. 0.006 min
 Lab File: VY016608.D
 Acq: 06 Dec 2023 11:52

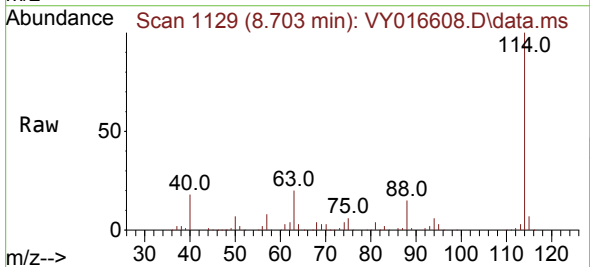
Instrument : MSVOA_Y
 ClientSampleId : VY1206SBL01



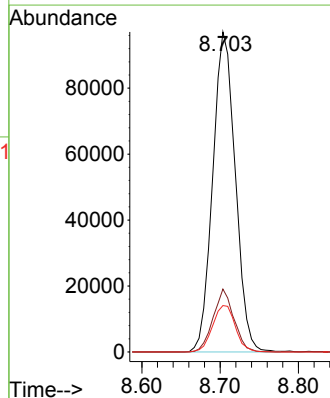
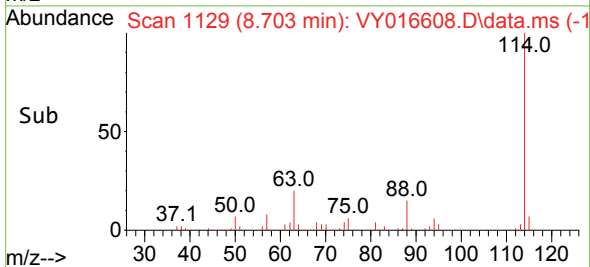
Tgt Ion: 65 Resp: 56682
 Ion Ratio Lower Upper
 65 100
 67 47.8 0.0 101.8

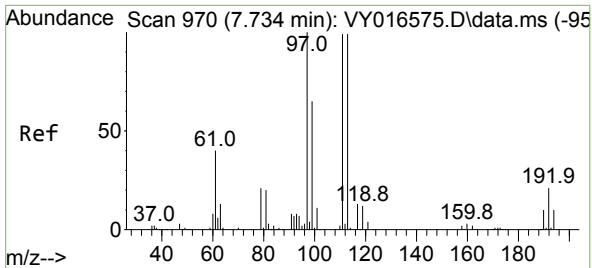


#34
 1,4-Difluorobenzene
 Concen: 50.000 ug/l
 RT: 8.703 min Scan# 1129
 Delta R.T. -0.000 min
 Lab File: VY016608.D
 Acq: 06 Dec 2023 11:52



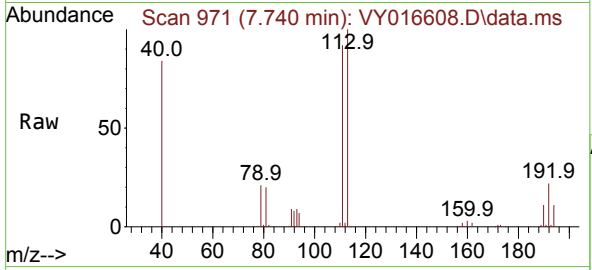
Tgt Ion: 114 Resp: 194514
 Ion Ratio Lower Upper
 114 100
 63 19.6 0.0 42.4
 88 14.5 0.0 30.6





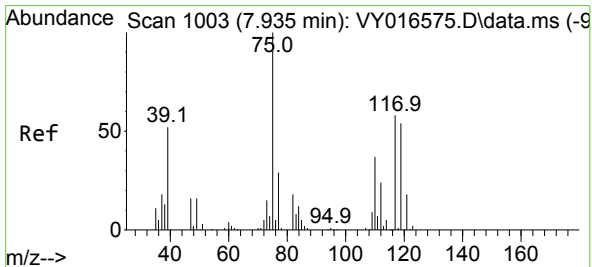
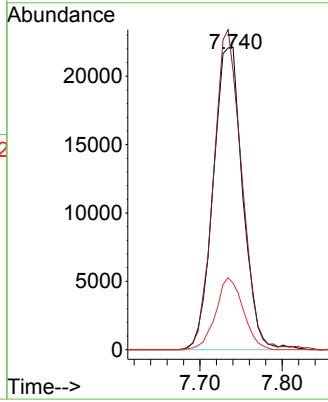
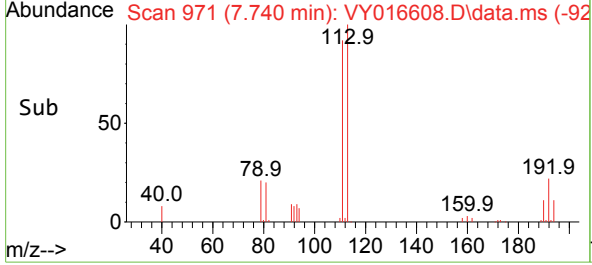
#35
 Dibromofluoromethane
 Concen: 46.780 ug/l
 RT: 7.740 min Scan# 911
 Delta R.T. 0.006 min
 Lab File: VY016608.D
 Acq: 06 Dec 2023 11:52

Instrument : MSVOA_Y
 ClientSampleId : VY1206SBL01

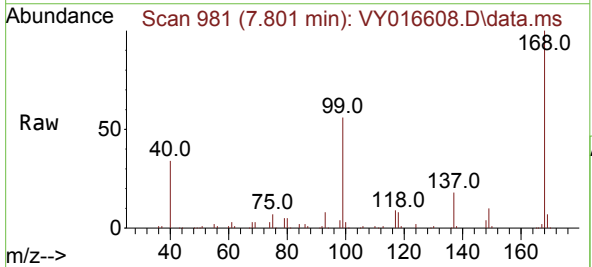


Tgt Ion: 113 Resp: 54760

Ion	Ratio	Lower	Upper
113	100		
111	101.9	81.3	121.9
192	22.3	16.9	25.3

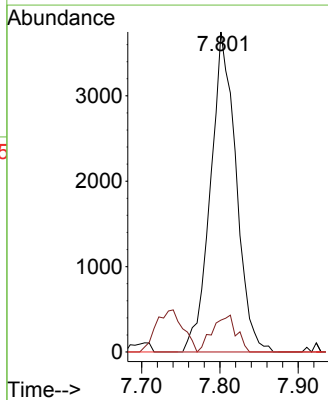
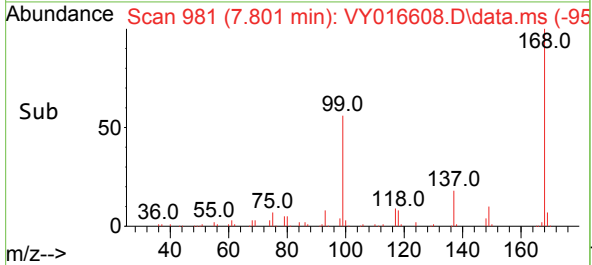


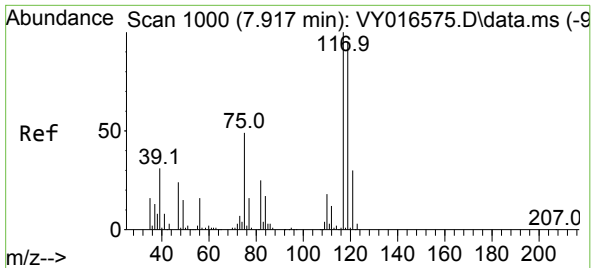
#36
 1,1-Dichloropropene
 Concen: 4.779 ug/l
 RT: 7.801 min Scan# 981
 Delta R.T. -0.134 min
 Lab File: VY016608.D
 Acq: 06 Dec 2023 11:52



Tgt Ion: 75 Resp: 8504

Ion	Ratio	Lower	Upper
75	100		
110	10.7	17.8	53.5#
77	0.0	24.4	36.6#

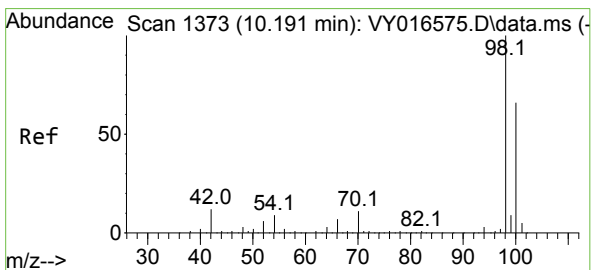
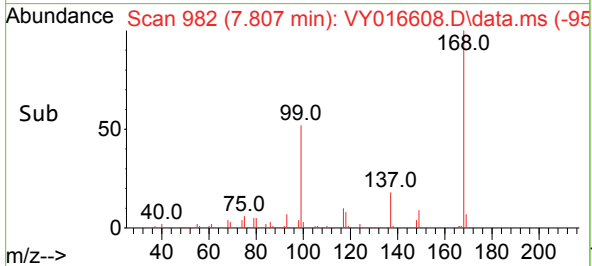
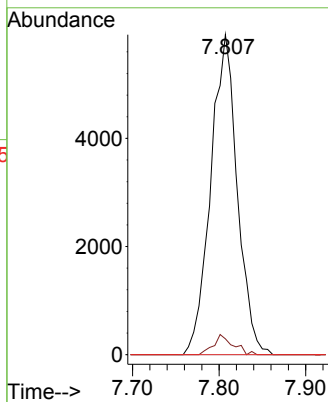
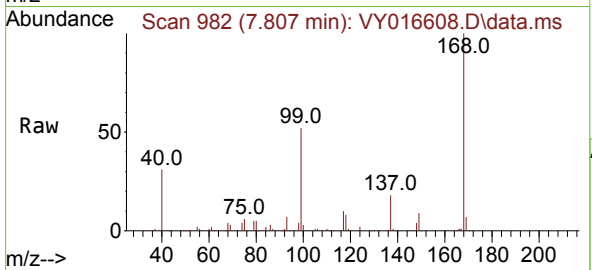




#38
 Carbon Tetrachloride
 Concen: 6.133 ug/l
 RT: 7.807 min Scan# 91
 Delta R.T. -0.110 min
 Lab File: VY016608.D
 Acq: 06 Dec 2023 11:52

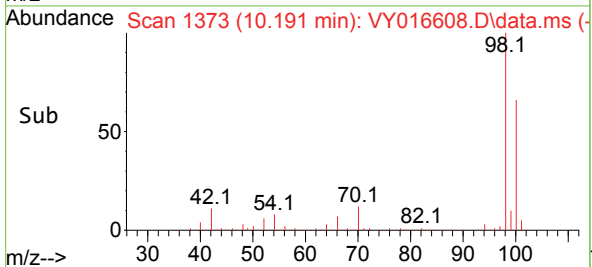
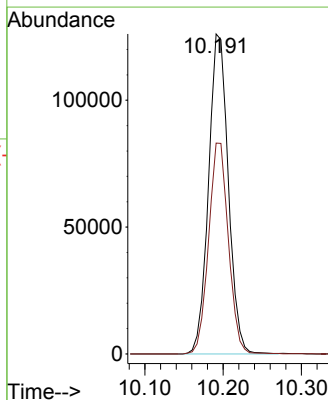
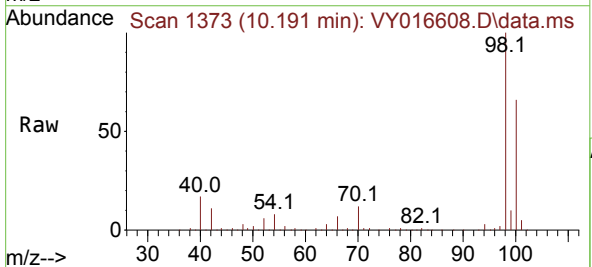
Instrument : MSVOA_Y
 ClientSampleId : VY1206SBL01

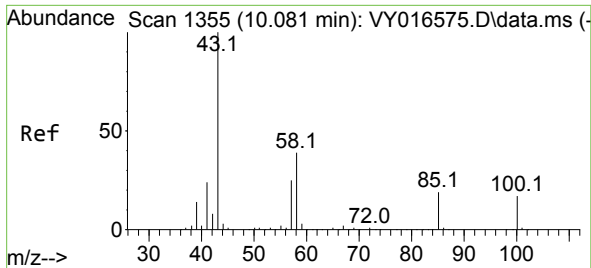
Tgt Ion: 117 Resp: 12633
 Ion Ratio Lower Upper
 117 100
 119 4.9 76.4 114.6#
 121 0.0 25.8 38.6#



#50
 Toluene-d8
 Concen: 49.863 ug/l
 RT: 10.191 min Scan# 1373
 Delta R.T. -0.000 min
 Lab File: VY016608.D
 Acq: 06 Dec 2023 11:52

Tgt Ion: 98 Resp: 220783
 Ion Ratio Lower Upper
 98 100
 100 66.1 50.1 75.1

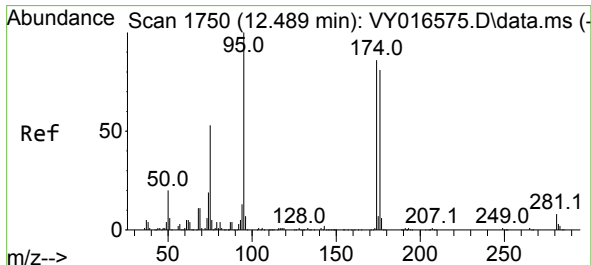
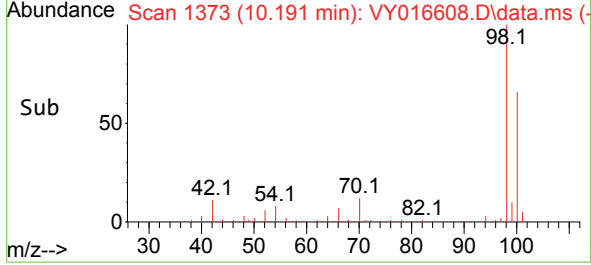
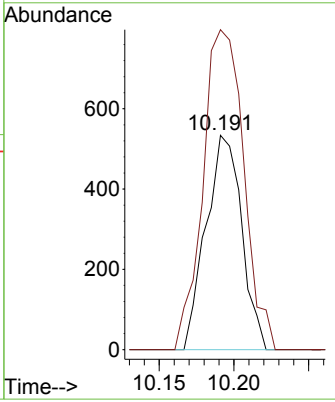
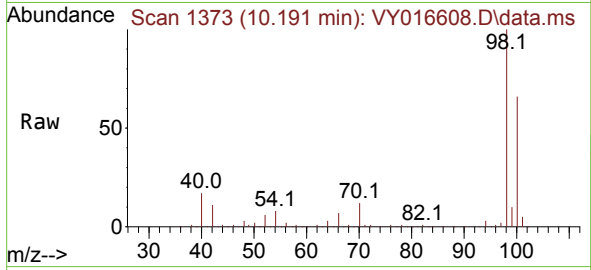




#51
 4-Methyl-2-Pentanone
 Concen: 1.186 ug/l
 RT: 10.191 min Scan# 1111
 Delta R.T. 0.110 min
 Lab File: VY016608.D
 Acq: 06 Dec 2023 11:52

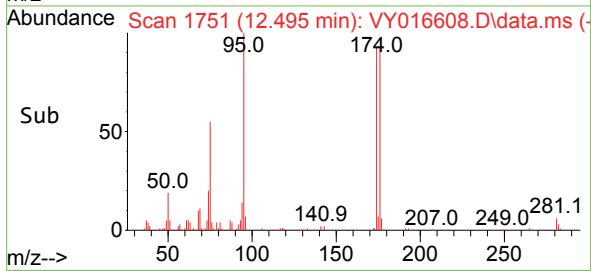
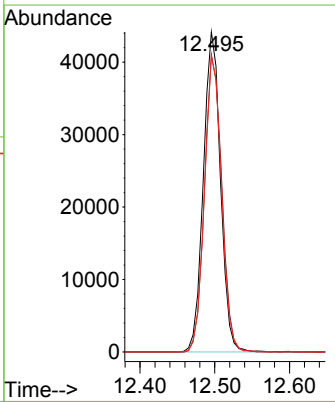
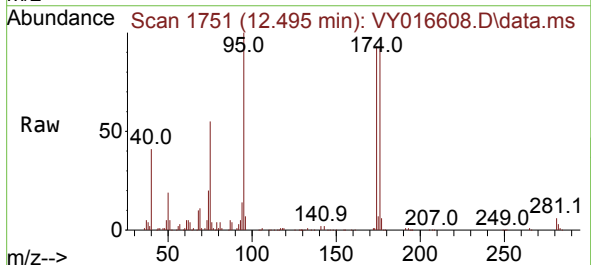
Instrument : MSVOA_Y
 ClientSampleId : VY1206SBL01

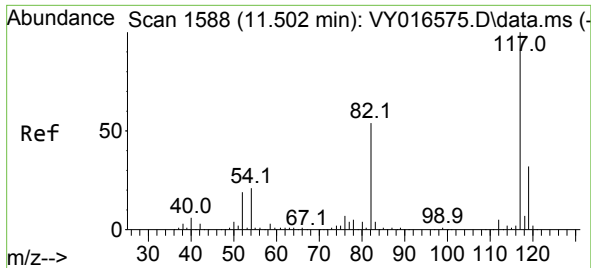
Tgt Ion	Resp	Lower	Upper
43	100		
58	170.8	29.0	43.6#



#62
 4-Bromofluorobenzene
 Concen: 48.183 ug/l
 RT: 12.495 min Scan# 1751
 Delta R.T. 0.006 min
 Lab File: VY016608.D
 Acq: 06 Dec 2023 11:52

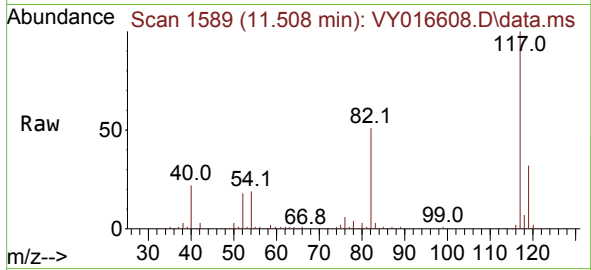
Tgt Ion	Resp	Lower	Upper
95	100		
174	93.8	0.0	178.2
176	91.9	0.0	173.8



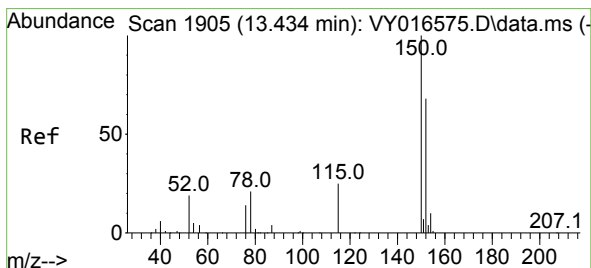
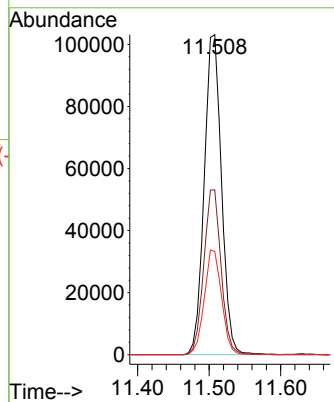
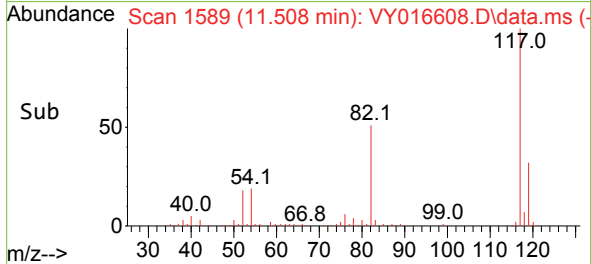


#63
 Chlorobenzene-d5
 Concen: 50.000 ug/l
 RT: 11.508 min Scan# 11
 Delta R.T. 0.006 min
 Lab File: VY016608.D
 Acq: 06 Dec 2023 11:52

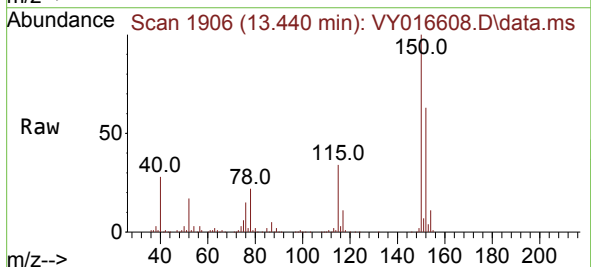
Instrument :
 MSVOA_Y
 ClientSampleId :
 VY1206SBL01



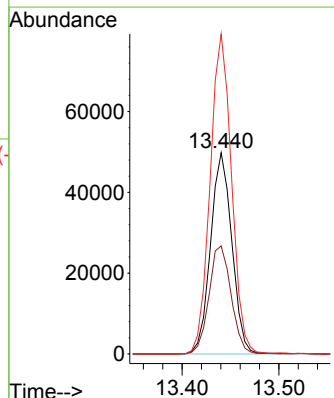
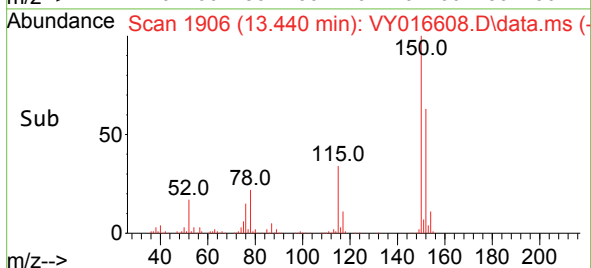
Tgt Ion:117 Resp: 173114
 Ion Ratio Lower Upper
 117 100
 82 51.5 43.4 65.0
 119 32.3 26.3 39.5

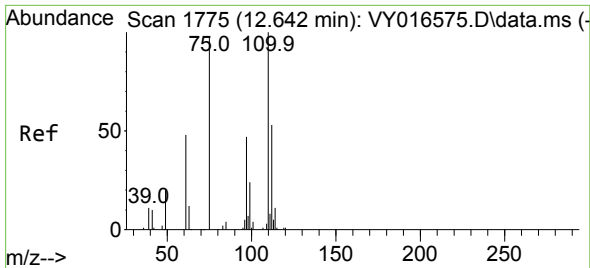


#72
 1,4-Dichlorobenzene-d4
 Concen: 50.000 ug/l
 RT: 13.440 min Scan# 1906
 Delta R.T. 0.006 min
 Lab File: VY016608.D
 Acq: 06 Dec 2023 11:52



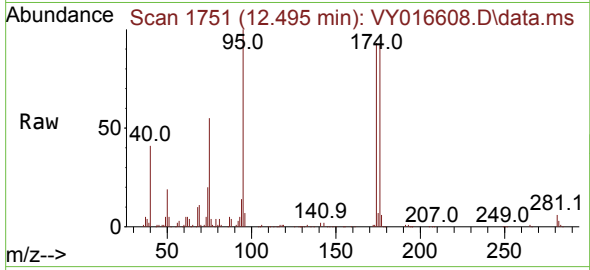
Tgt Ion:152 Resp: 76280
 Ion Ratio Lower Upper
 152 100
 115 56.0 28.8 86.5
 150 159.6 0.0 348.8



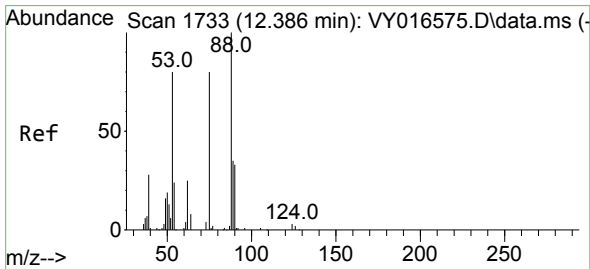
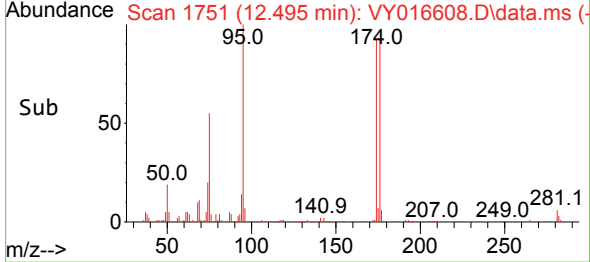
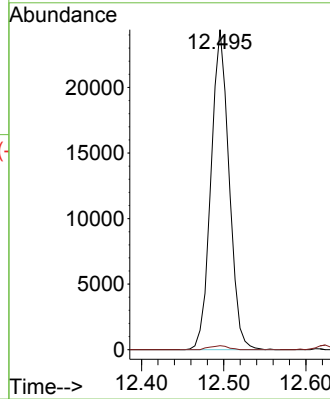


#76
 1,2,3-Trichloropropane
 Concen: 54.126 ug/l
 RT: 12.495 min Scan# 1751
 Delta R.T. -0.146 min
 Lab File: VY016608.D
 Acq: 06 Dec 2023 11:52

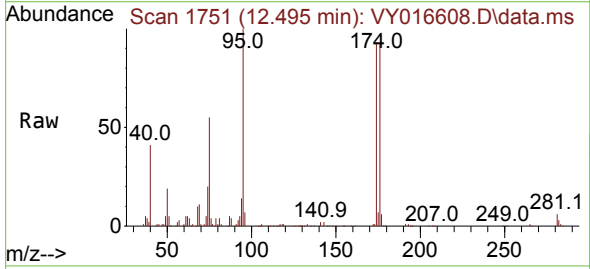
Instrument : MSVOA_Y
 ClientSampleId : VY1206SBL01



Tgt Ion: 75 Resp: 37296
 Ion Ratio Lower Upper
 75 100
 77 1.3 0.0 0.0#



#81
 trans-1,4-Dichloro-2-butene
 Concen: 122.098 ug/l
 RT: 12.495 min Scan# 1751
 Delta R.T. 0.110 min
 Lab File: VY016608.D
 Acq: 06 Dec 2023 11:52



Tgt Ion: 75 Resp: 37296
 Ion Ratio Lower Upper
 75 100
 53 0.0 77.8 116.8#
 89 0.1 37.4 56.0#

