

Data Path : Z:\VOASRV\HPCHEM1\MSVOA Y\DATA\VY120720\
 Data File : VY003674.D
 Acq On : 07 Dec 2020 16:46
 Operator : SY/MD
 Sample : L4485-06
 Misc : 5.00G/10ML/MSVOA Y/SOIL
 ALS Vial : 14 Sample Multiplier: 1

Instrument :
 MSVOA_Y
 ClientSampleId :
 MDL-SOIL-07

Quant Time: Dec 08 00:45:39 2020
 Quant Method : Z:\VOASRV\HPCHEM1\MSVOA_Y\METHODS\SFAMYL120720SMA.M
 Quant Title : VOC Analysis
 QLast Update : Tue Dec 08 00:43:44 2020
 Response via : Initial Calibration

Internal Standards	R.T.	QIon	Response	Conc	Units	Dev(Min)
1) 1,4-Difluorobenzene	8.70	114	242117	25.00	ug/L	0.00
28) Chlorobenzene-d5	11.49	117	229519	25.00	ug/L	0.00
58) 1,4-Dichlorobenzene-d4	13.43	152	117764	25.00	ug/L	0.00

System Monitoring Compounds

4) Vinyl Chloride-d3	2.25	65	48298	19.15	ug/L	0.00
Spiked Amount	25.000	Range	30 - 150	Recovery	=	76.60%
7) Chloroethane-d5	2.77	69	43187	21.35	ug/L	0.00
Spiked Amount	25.000	Range	30 - 150	Recovery	=	85.40%
11) 1,1-Dichloroethene-d2	3.86	63	82845	15.63	ug/L	0.00
Spiked Amount	25.000	Range	45 - 110	Recovery	=	62.52%
21) 2-Butanone-d5	6.90	46	60411	49.39	ug/L	0.00
Spiked Amount	50.000	Range	20 - 135	Recovery	=	98.78%
24) Chloroform-d	7.49	84	118849	22.05	ug/L	0.00
Spiked Amount	25.000	Range	40 - 150	Recovery	=	88.20%
26) 1,2-Dichloroethane-d4	8.15	65	68587	22.99	ug/L	0.00
Spiked Amount	25.000	Range	70 - 130	Recovery	=	91.96%
32) Benzene-d6	8.12	84	254037	22.35	ug/L	0.00
Spiked Amount	25.000	Range	20 - 135	Recovery	=	89.40%
36) 1,2-Dichloropropane-d6	9.12	67	80532	23.31	ug/L	0.00
Spiked Amount	25.000	Range	70 - 120	Recovery	=	93.24%
41) Toluene-d8	10.18	98	227926	22.29	ug/L	0.00
Spiked Amount	25.000	Range	30 - 130	Recovery	=	89.16%
43) trans-1,3-Dichloropropene-	10.44	79	37473	22.62	ug/L	0.00
Spiked Amount	25.000	Range	30 - 135	Recovery	=	90.48%
47) 2-Hexanone-d5	10.79	63	47793	48.90	ug/L	0.00
Spiked Amount	50.000	Range	20 - 135	Recovery	=	97.80%
56) 1,1,2,2-Tetrachloroethane-	12.56	84	75822	23.77	ug/L	0.00
Spiked Amount	25.000	Range	45 - 120	Recovery	=	95.08%
66) 1,2-Dichlorobenzene-d4	13.72	152	90682	23.70	ug/L	0.00
Spiked Amount	25.000	Range	75 - 120	Recovery	=	94.80%

Target Compounds

Target Compounds	R.T.	QIon	Response	Conc	Units	Ovalue
2) Dichlorodifluoromethane	1.91	85	3287	1.297	ug/L	95
3) Chloromethane	2.12	50	3783	1.302	ug/L	85
5) Vinyl chloride	2.26	62	3548	1.211	ug/L #	67
6) Bromomethane	2.66	94	2297	1.219	ug/L	94
9) Trichlorofluoromethane	3.13	101	5545	1.207	ug/L	97
12) 1,1-Dichloroethene	3.89	96	4164	1.445	ug/L #	1
14) Carbon disulfide	4.20	76	10263	1.101	ug/L	99
15) Methyl Acetate	4.49	43	2582	1.216	ug/L #	88
16) Methylene chloride	4.73	84	10445	2.468	ug/L	98
17) trans-1,2-Dichloroethene	5.24	96	3932	1.223	ug/L	83
18) Methyl tert-butyl Ether	5.23	73	8899	1.097	ug/L #	78
19) 1,1-Dichloroethane	6.03	63	6284	1.177	ug/L	88
20) cis-1,2-Dichloroethene	7.00	96	4362	1.267	ug/L	88
22) 2-Butanone	7.00	43	4090	2.759	ug/L #	67
23) Bromochloromethane	7.34	128	1957	1.142	ug/L #	86
27) 1,2-Dichloroethane	8.25	62	4591	1.255	ug/L #	90
29) Cyclohexane	7.79	56	5438	1.111	ug/L	97

Data Path : Z:\VOASRV\HPCHEM1\MSVOA Y\DATA\VY120720\
 Data File : VY003674.D
 Acq On : 07 Dec 2020 16:46
 Operator : SY/MD
 Sample : L4485-06
 Misc : 5.00G/10ML/MSVOA Y/SOIL
 ALS Vial : 14 Sample Multiplier: 1

Instrument :
 MSVOA_Y
 ClientSampleId :
 MDL-SOIL-07

Quant Time: Dec 08 00:45:39 2020
 Quant Method : Z:\VOASRV\HPCHEM1\MSVOA_Y\METHODS\SFAMYL120720SMA.M
 Quant Title : VOC Analysis
 QLast Update : Tue Dec 08 00:43:44 2020
 Response via : Initial Calibration

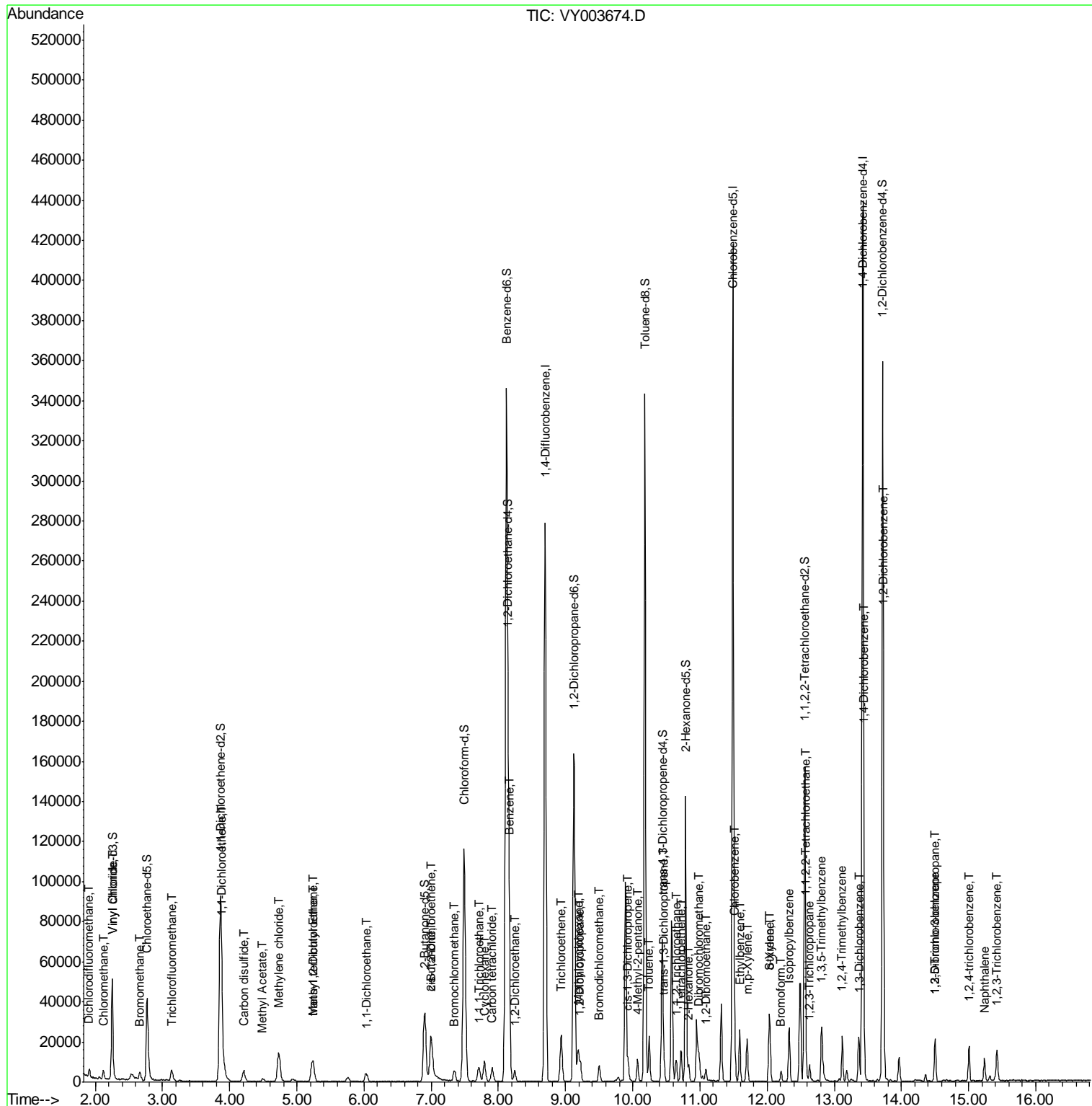
Internal Standards	R.T.	QIon	Response	Conc	Units	Dev(Min)
30) 1,1,1-Trichloroethane	7.71	97	5581	1.169	ug/L	98
31) Carbon tetrachloride	7.92	117	5109	1.181	ug/L	95
33) Benzene	8.17	78	15008	1.156	ug/L	100
34) Trichloroethene	8.95	95	4133	1.183	ug/L	94
35) Methylcyclohexane	9.19	83	6529	1.187	ug/L	96
37) 1,2-Dichloropropane	9.22	63	3892	1.200	ug/L #	84
38) Bromodichloromethane	9.50	83	4775	1.151	ug/L	86
39) cis-1,3-Dichloropropene	9.93	75	5690	1.112	ug/L	97
40) 4-Methyl-2-pentanone	10.07	43	7346	2.502	ug/L	95
42) Toluene	10.25	91	16661	1.205	ug/L	98
44) trans-1,3-Dichloropropene	10.47	75	7239	1.519	ug/L	99
45) 1,1,2-Trichloroethane	10.65	97	3481	1.229	ug/L	88
46) Tetrachloroethene	10.72	164	3444	1.227	ug/L	96
48) 2-Hexanone	10.83	43	4755	2.322	ug/L #	93
49) Dibromochloromethane	10.98	129	3920	1.201	ug/L	93
50) 1,2-Dibromoethane	11.09	107	3302	1.208	ug/L #	98
51) Chlorobenzene	11.52	112	11241	1.230	ug/L	93
52) Ethylbenzene	11.59	91	17662	1.184	ug/L	95
53) m,p-Xylene	11.70	106	7201	1.235	ug/L	94
54) o-Xylene	12.03	106	6314	1.133	ug/L	83
55) Styrene	12.04	104	10450	1.098	ug/L	98
57) 1,1,2,2-Tetrachloroethane	12.58	83	4295	1.398	ug/L #	82
59) Bromoform	12.21	173	2481	1.131	ug/L	92
60) Isopropylbenzene	12.33	105	16037	1.120	ug/L	98
61) 1,2,3-Trichloropropane	12.64	75	3304	1.258	ug/L	97
62) 1,3,5-Trimethylbenzene	12.81	105	12449	1.096	ug/L	96
63) 1,2,4-Trimethylbenzene	13.12	105	12102	1.073	ug/L	97
64) 1,3-Dichlorobenzene	13.37	146	8588	1.237	ug/L	92
65) 1,4-Dichlorobenzene	13.45	146	9285	1.321	ug/L	94
67) 1,2-Dichlorobenzene	13.74	146	8404	1.302	ug/L	96
68) 1,2-Dibromo-3-chloropropan	14.50	75	1048	1.816	ug/L #	1
69) 1,3,5-Trichlorobenzene	14.50	180	6503	1.322	ug/L	94
70) 1,2,4-trichlorobenzene	15.01	180	5341	1.277	ug/L	99
71) Naphthalene	15.24	128	9736	1.097	ug/L	97
72) 1,2,3-Trichlorobenzene	15.42	180	5014	1.307	ug/L	97

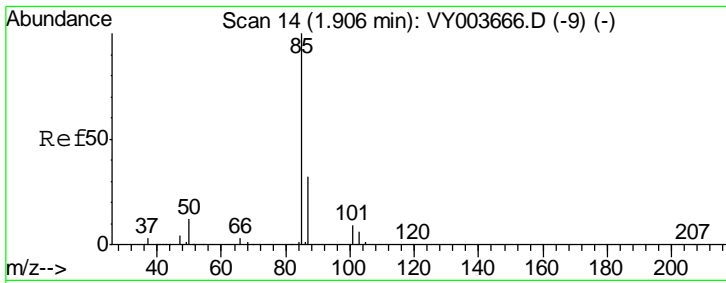
(#) = qualifier out of range (m) = manual integration (+) = signals summed

Data Path : Z:\VOASRV\HPCHEM1\MSVOA Y\DATA\VY120720\
 Data File : VY003674.D
 Acq On : 07 Dec 2020 16:46
 Operator : SY/MD
 Sample : L4485-06
 Misc : 5.00G/10ML/MSVOA Y/SOIL
 ALS Vial : 14 Sample Multiplier: 1

Instrument :
 MSVOA_Y
 Client Sampled :
 MDL-SOIL-07

Quant Time: Dec 08 00:45:39 2020
 Quant Method : Z:\VOASRV\HPCHEM1\MSVOA_Y\METHODS\SFAMYL120720SMA.M
 Quant Title : VOC Analysis
 QLast Update : Tue Dec 08 00:43:44 2020
 Response via : Initial Calibration

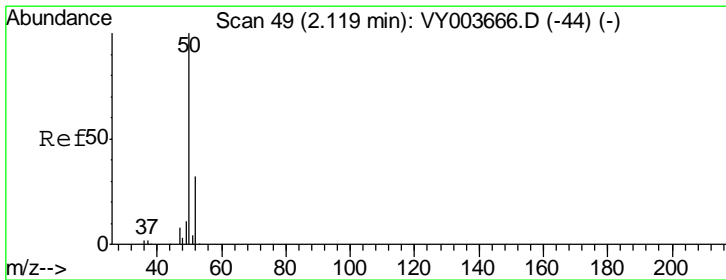
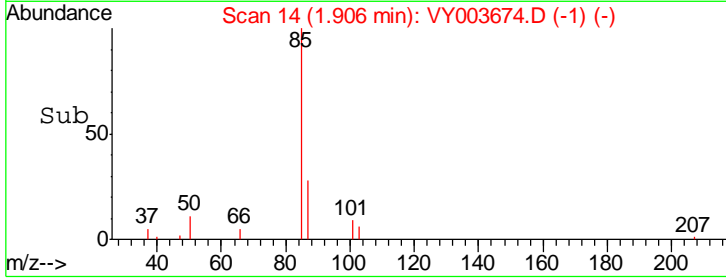
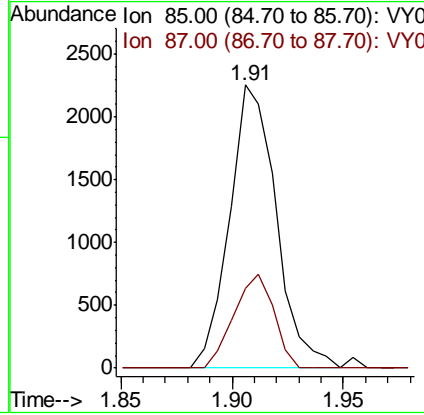
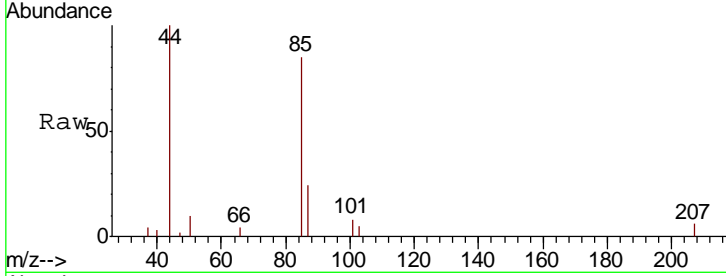




#2
 Dichlorodifluoromethane
 Concen: 1.297 ug/L
 RT: 1.91 min Scan# 14
 Delta R.T. -0.00 min
 Lab File: VY003674.D
 Acq: 07 Dec 2020 16:46

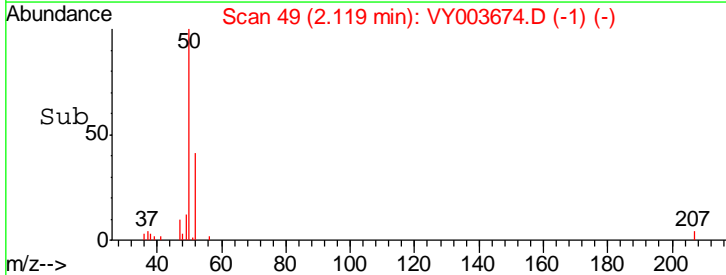
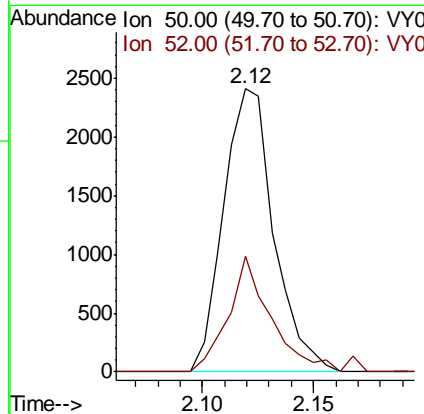
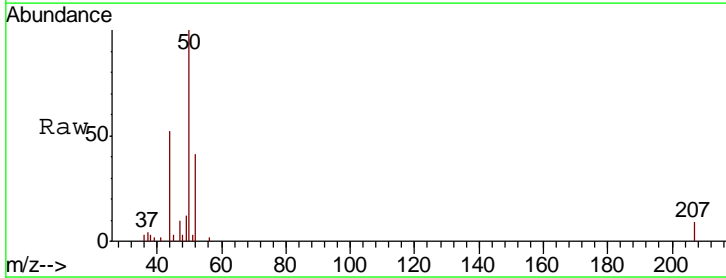
Instrument :
 MSVOA_Y
 ClientSampled :
 MDL-SOIL-07

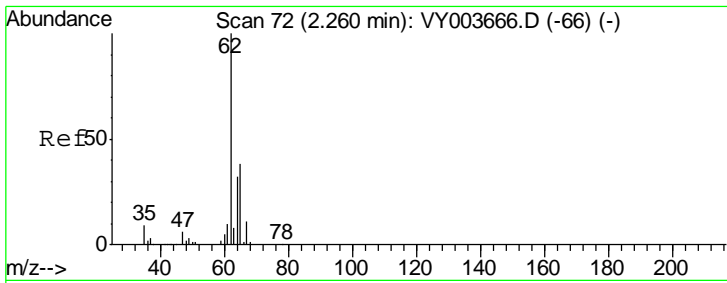
Tgt Ion: 85 Resp: 3287
 Ion Ratio Lower Upper
 85 100
 87 28.4 25.1 37.7



#3
 Chloromethane
 Concen: 1.302 ug/L
 RT: 2.12 min Scan# 49
 Delta R.T. -0.00 min
 Lab File: VY003674.D
 Acq: 07 Dec 2020 16:46

Tgt Ion: 50 Resp: 3783
 Ion Ratio Lower Upper
 50 100
 52 40.9 22.7 42.1

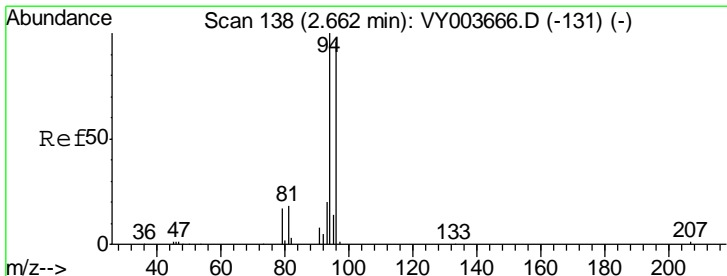
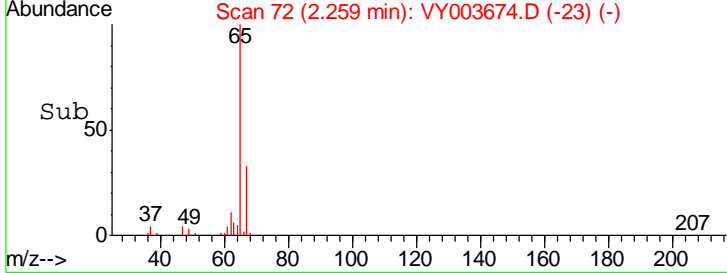
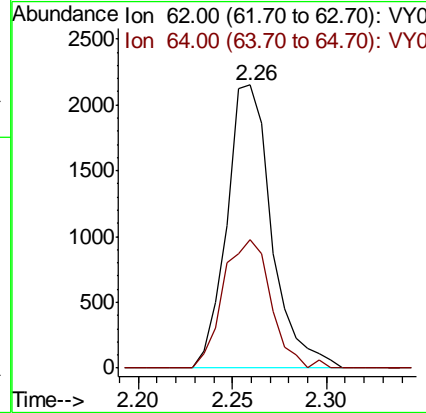
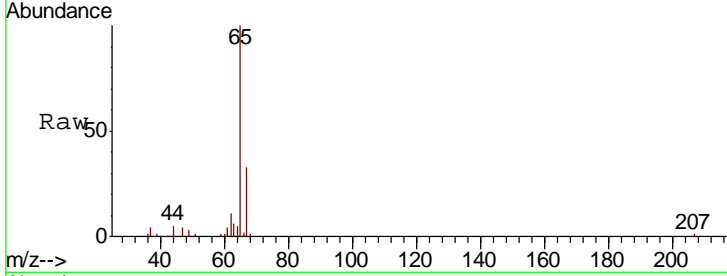




#5
 Vinyl chloride
 Concen: 1.211 ug/L
 RT: 2.26 min Scan# 72
 Delta R.T. -0.00 min
 Lab File: VY003674.D
 Acq: 07 Dec 2020 16:46

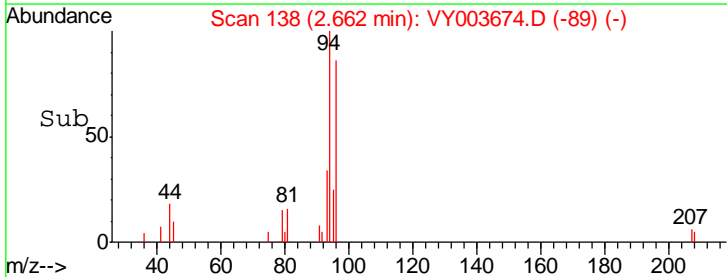
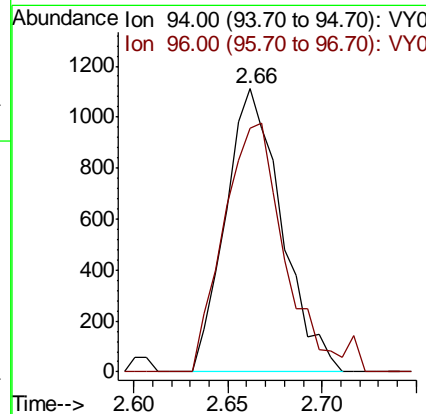
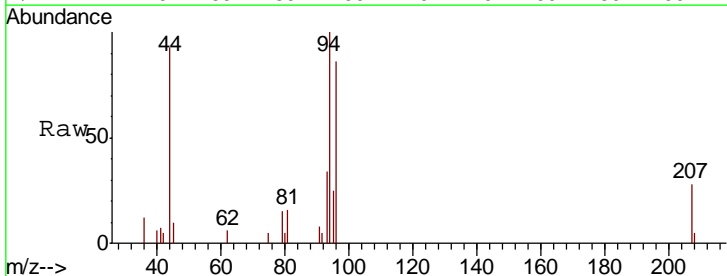
Instrument :
 MSVOA_Y
ClientSampled :
 MDL-SOIL-07

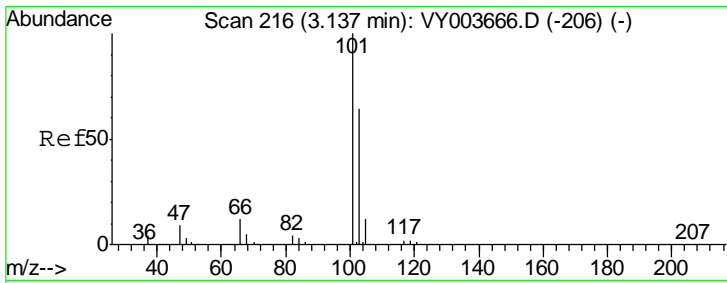
Tgt Ion	Resp	Lower	Upper
62	100		
64	45.2	19.6	36.4#



#6
 Bromomethane
 Concen: 1.219 ug/L
 RT: 2.66 min Scan# 138
 Delta R.T. -0.00 min
 Lab File: VY003674.D
 Acq: 07 Dec 2020 16:46

Tgt Ion	Resp	Lower	Upper
94	100		
96	86.3	56.6	105.2

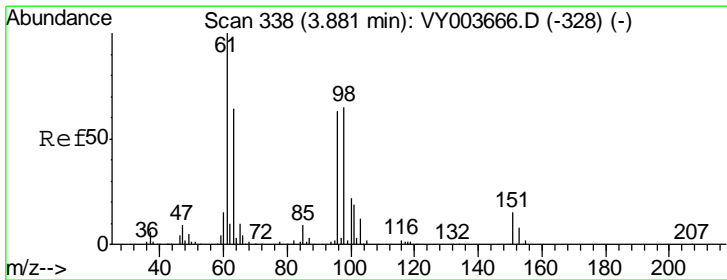
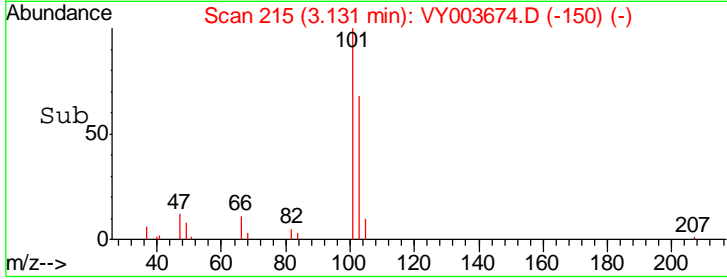
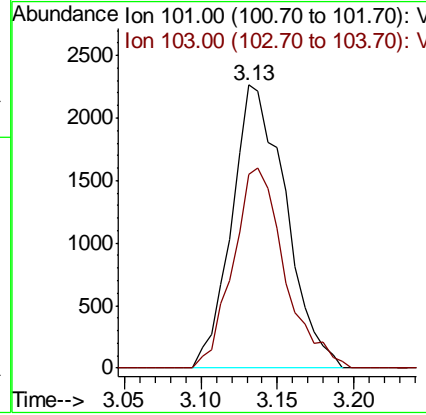
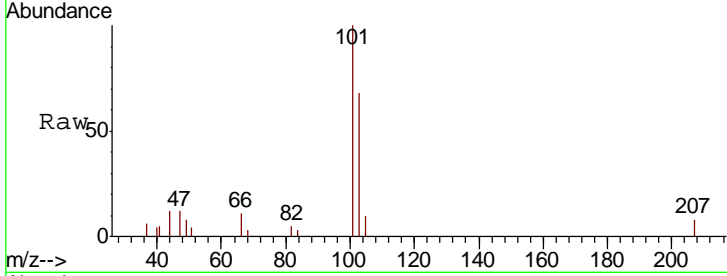




#9
 Trichlorofluoromethane
 Concen: 1.207 ug/L
 RT: 3.13 min Scan# 215
 Delta R.T. -0.01 min
 Lab File: VY003674.D
 Acq: 07 Dec 2020 16:46

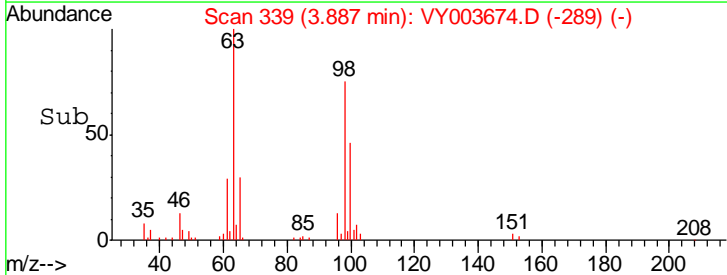
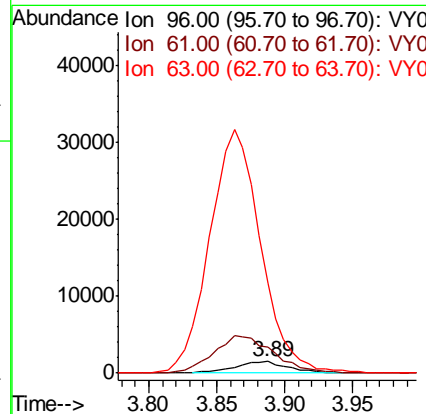
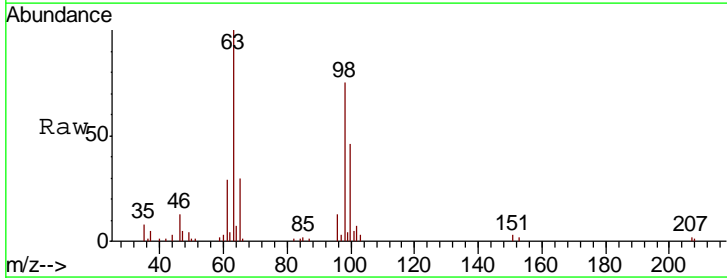
Instrument :
 MSVOA_Y
 ClientSampled :
 MDL-SOIL-07

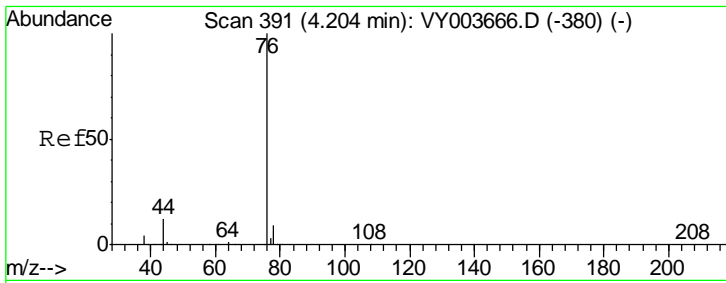
Tgt Ion	Resp	Lower	Upper
101	5545		
103	67.8	52.3	78.5



#12
 1,1-Dichloroethene
 Concen: 1.445 ug/L
 RT: 3.89 min Scan# 339
 Delta R.T. 0.01 min
 Lab File: VY003674.D
 Acq: 07 Dec 2020 16:46

Tgt Ion	Resp	Lower	Upper
96	4164		
61	225.6	108.6	201.8#
63	786.1	61.0	113.2#

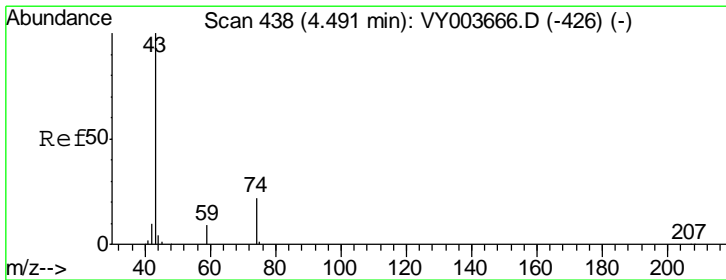
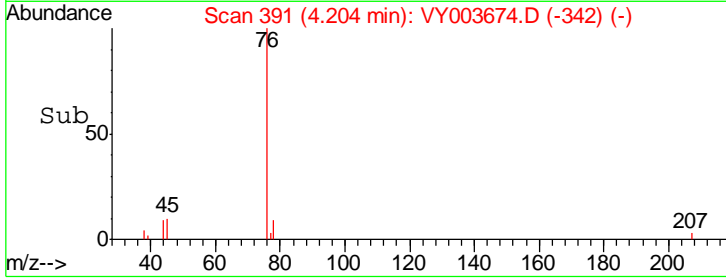
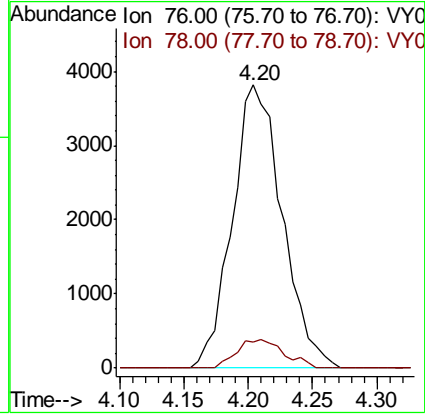
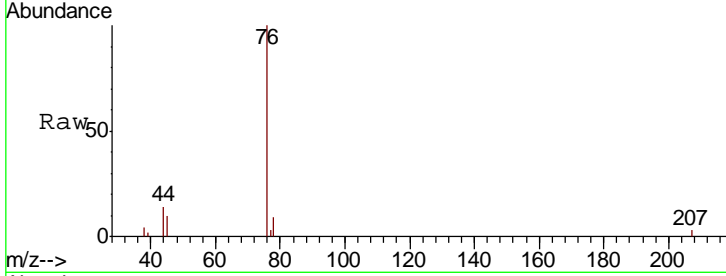




#14
 Carbon disulfide
 Concen: 1.101 ug/L
 RT: 4.20 min Scan# 391
 Delta R.T. -0.00 min
 Lab File: VY003674.D
 Acq: 07 Dec 2020 16:46

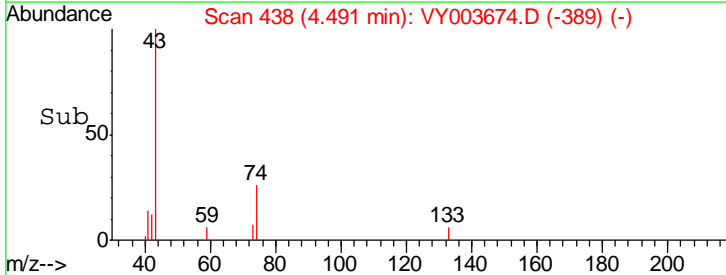
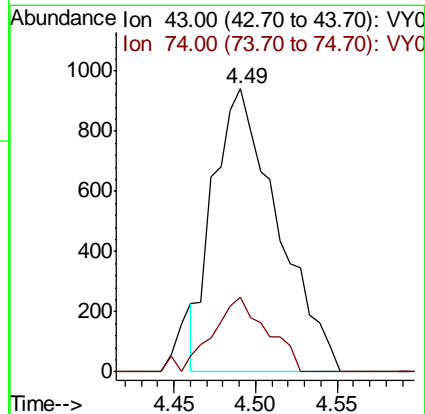
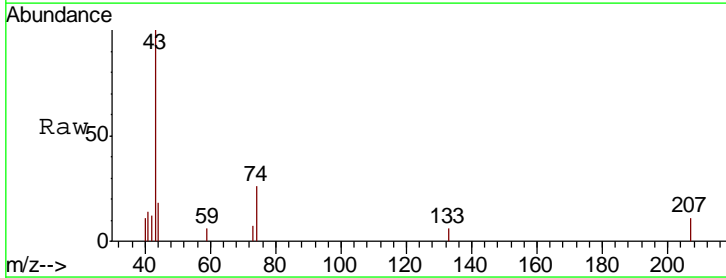
Instrument :
 MSVOA_Y
ClientSampled :
 MDL-SOIL-07

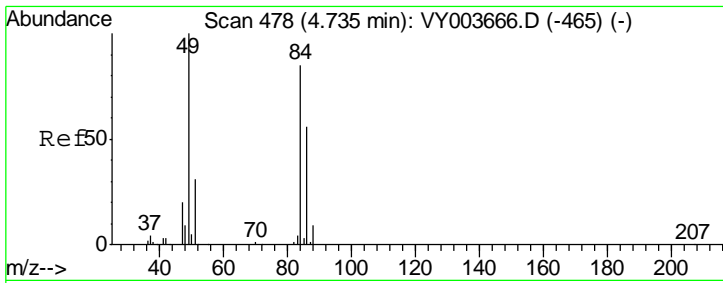
Tgt Ion	Resp	Lower	Upper
76	10263		
78	9.4	7.8	11.8



#15
 Methyl Acetate
 Concen: 1.216 ug/L
 RT: 4.49 min Scan# 438
 Delta R.T. -0.00 min
 Lab File: VY003674.D
 Acq: 07 Dec 2020 16:46

Tgt Ion	Resp	Lower	Upper
43	2582		
74	22.1	13.4	20.2#

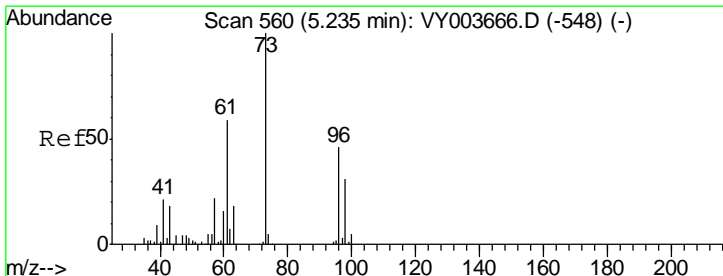
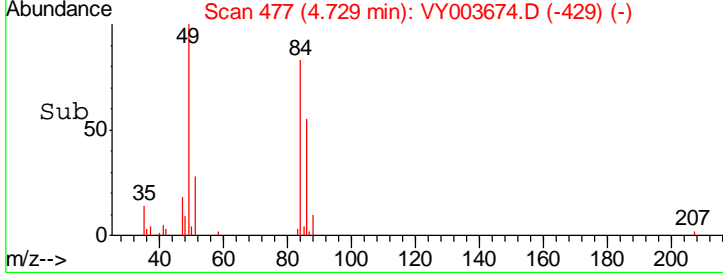
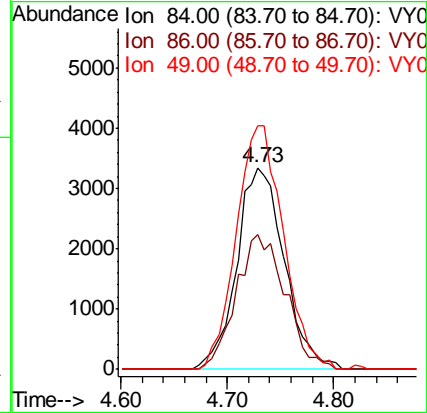
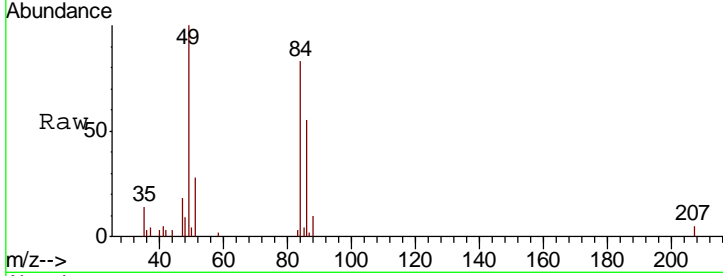




#16
 Methylene chloride
 Concen: 2.468 ug/L
 RT: 4.73 min Scan# 477
 Delta R.T. -0.01 min
 Lab File: VY003674.D
 Acq: 07 Dec 2020 16:46

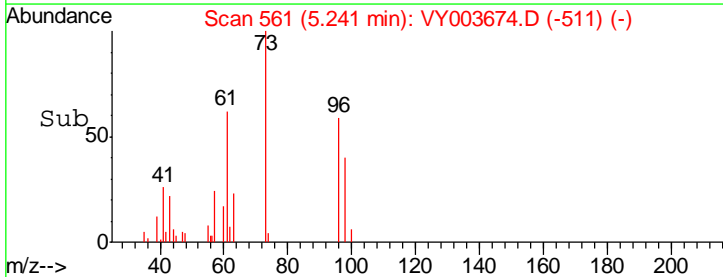
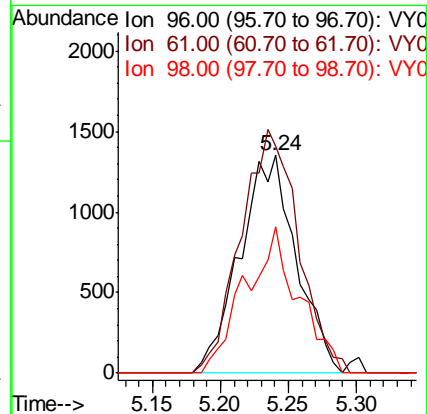
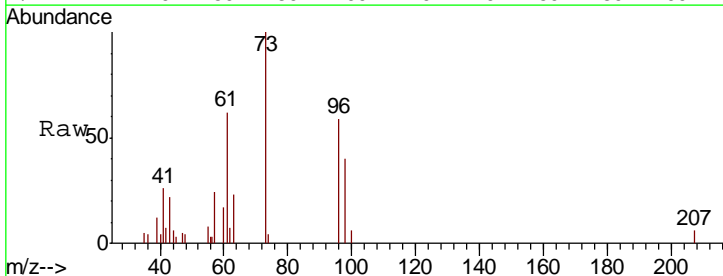
Instrument :
 MSVOA_Y
 ClientSampled :
 MDL-SOIL-07

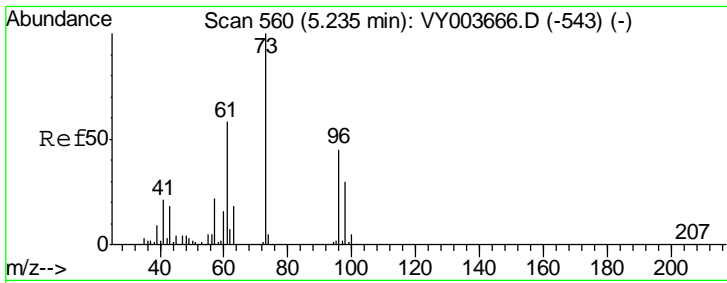
Tgt Ion	Resp	Lower	Upper
84	10445		
84	100		
86	66.8	45.2	84.0
49	120.5	83.1	154.3



#17
 trans-1,2-Dichloroethene
 Concen: 1.223 ug/L
 RT: 5.24 min Scan# 561
 Delta R.T. 0.01 min
 Lab File: VY003674.D
 Acq: 07 Dec 2020 16:46

Tgt Ion	Resp	Lower	Upper
96	3932		
96	100		
61	104.0	91.8	170.6
98	67.0	44.7	82.9

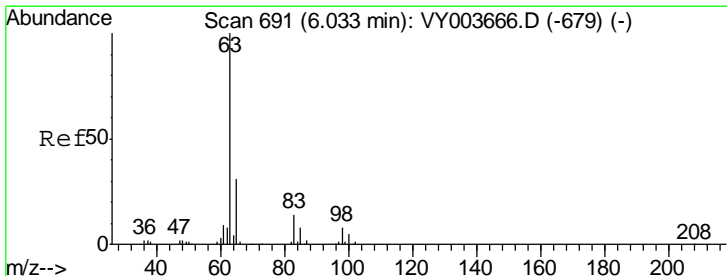
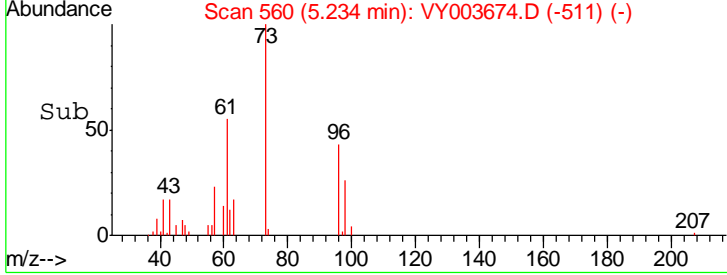
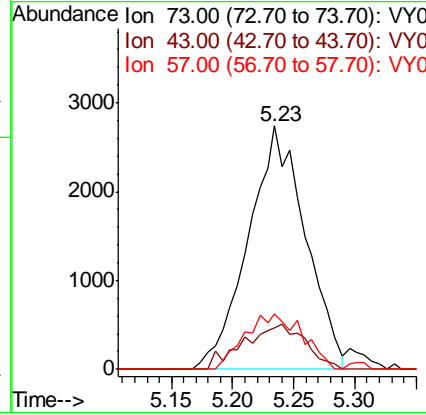
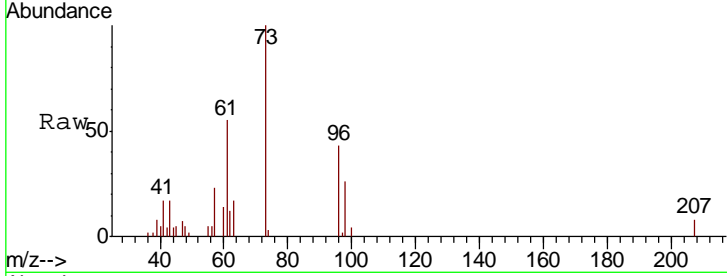




#18
 Methyl tert-butyl Ether
 Concen: 1.097 ug/L
 RT: 5.23 min Scan# 560
 Delta R.T. -0.00 min
 Lab File: VY003674.D
 Acq: 07 Dec 2020 16:46

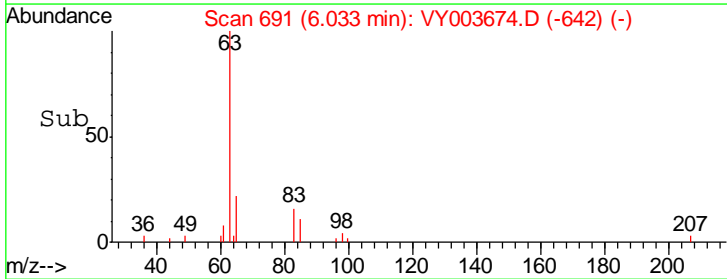
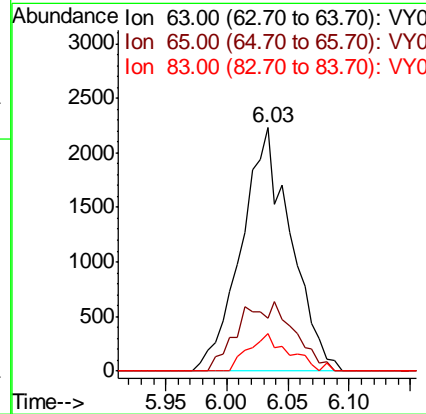
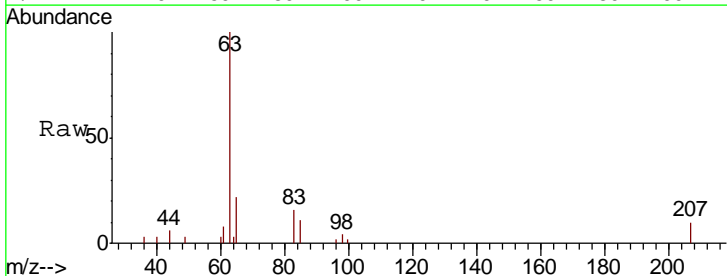
Instrument :
 MSVOA_Y
ClientSampled :
 MDL-SOIL-07

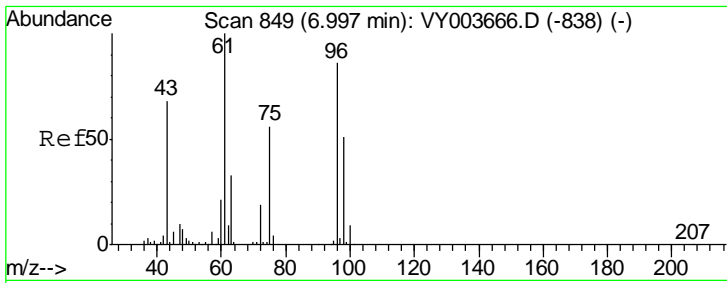
Tgt Ion	Resp	Lower	Upper
73	100		
43	18.8	10.2	15.4#
57	10.4	18.3	27.5#



#19
 1,1-Dichloroethane
 Concen: 1.177 ug/L
 RT: 6.03 min Scan# 691
 Delta R.T. -0.00 min
 Lab File: VY003674.D
 Acq: 07 Dec 2020 16:46

Tgt Ion	Resp	Lower	Upper
63	100		
65	21.9	20.4	38.0
83	15.6	8.6	16.0

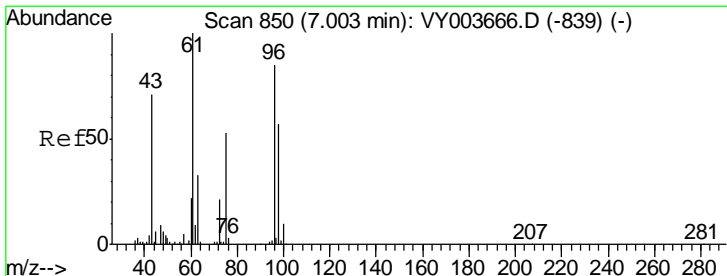
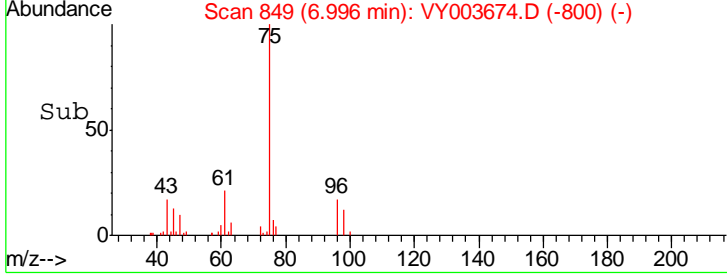
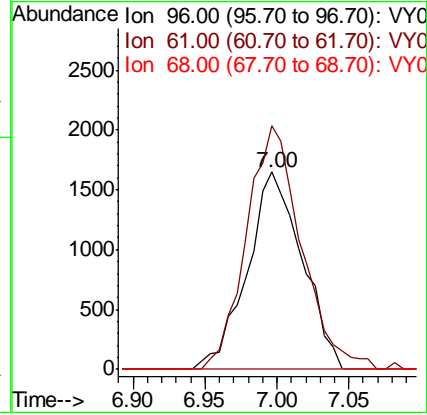
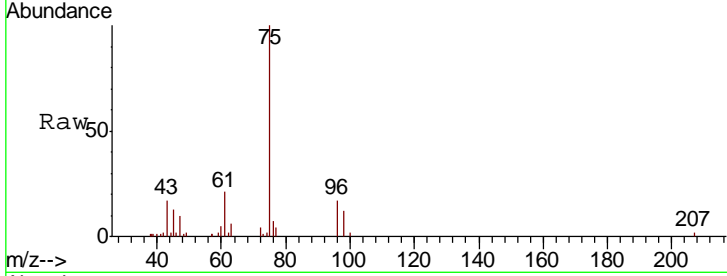




#20
 cis-1,2-Dichloroethene
 Concen: 1.267 ug/L
 RT: 7.00 min Scan# 849
 Delta R.T. -0.00 min
 Lab File: VY003674.D
 Acq: 07 Dec 2020 16:46

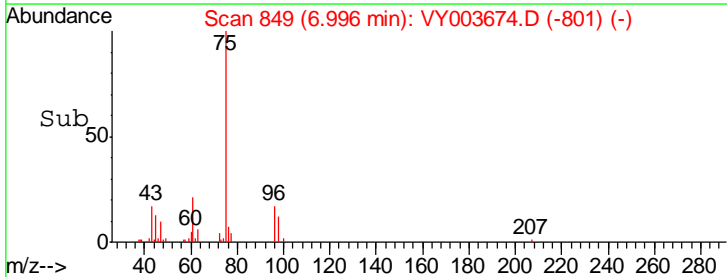
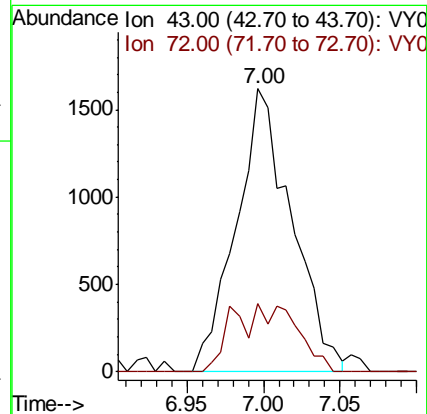
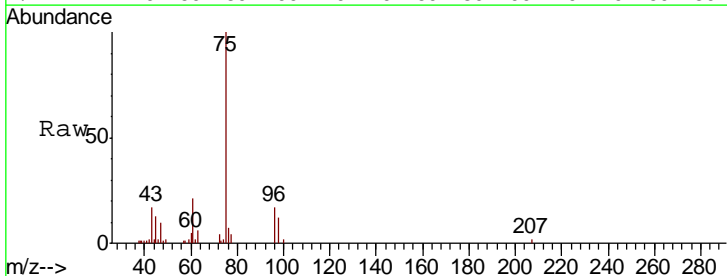
Instrument : MSVOA_Y
 ClientSampled : MDL-SOIL-07

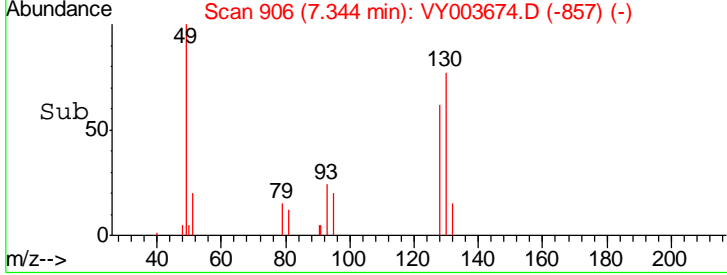
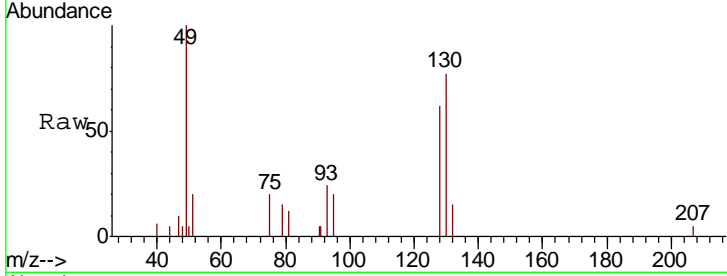
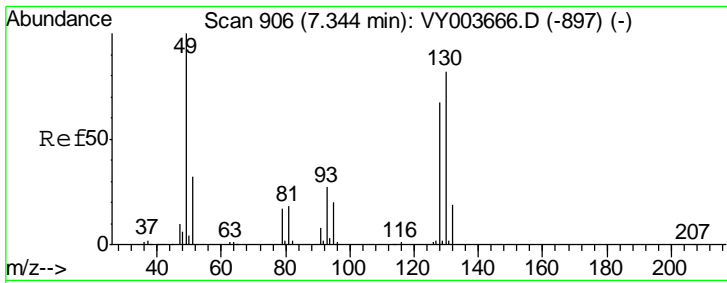
Tgt Ion	Resp	Lower	Upper
96	100		
61	123.4	96.3	178.9
68	0.0	0.0	0.0



#22
 2-Butanone
 Concen: 2.759 ug/L
 RT: 7.00 min Scan# 849
 Delta R.T. -0.01 min
 Lab File: VY003674.D
 Acq: 07 Dec 2020 16:46

Tgt Ion	Resp	Lower	Upper
43	100		
72	5.9	10.8	32.4#

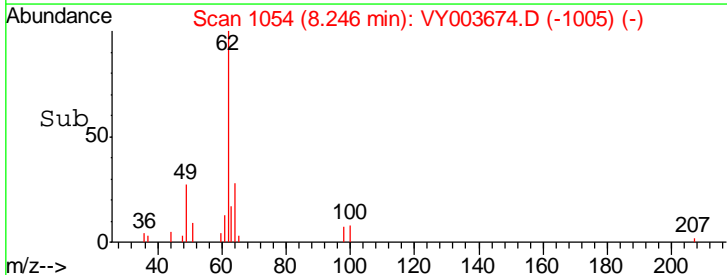
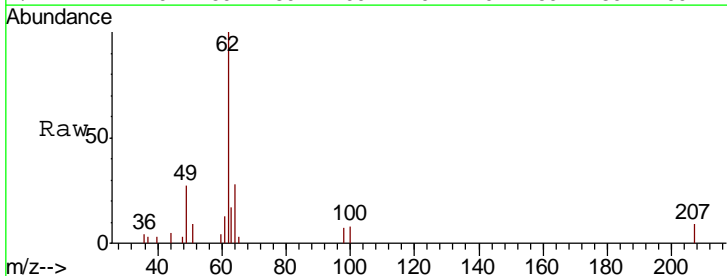
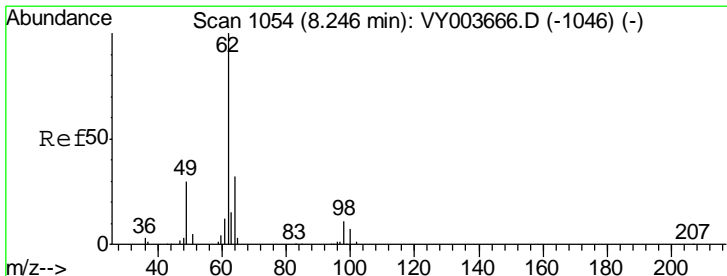
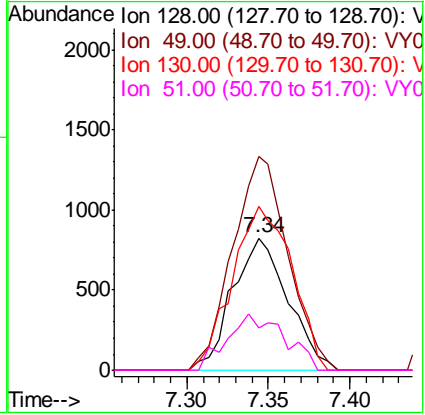




#23
 Bromochloromethane
 Concen: 1.142 ug/L
 RT: 7.34 min Scan# 906
 Delta R.T. -0.00 min
 Lab File: VY003674.D
 Acq: 07 Dec 2020 16:46

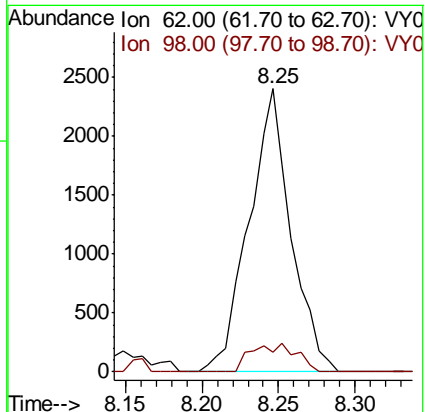
Instrument : MSVOA_Y
 ClientSampled : MDL-SOIL-07

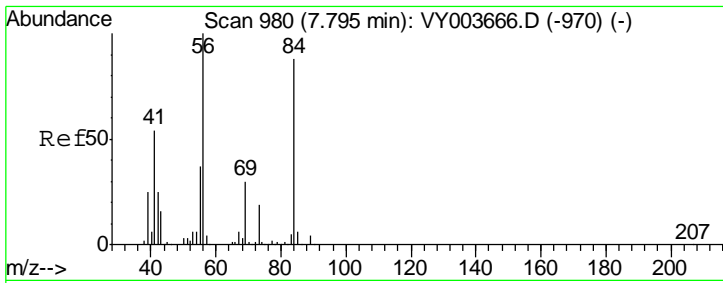
Tgt Ion	Resp	Lower	Upper
128	100		
49	161.6	100.8	187.2
130	123.9	78.2	145.2
51	31.9	34.5	51.7#



#27
 1,2-Dichloroethane
 Concen: 1.255 ug/L
 RT: 8.25 min Scan# 1054
 Delta R.T. -0.00 min
 Lab File: VY003674.D
 Acq: 07 Dec 2020 16:46

Tgt Ion	Resp	Lower	Upper
62	100		
98	6.8	8.3	12.5#

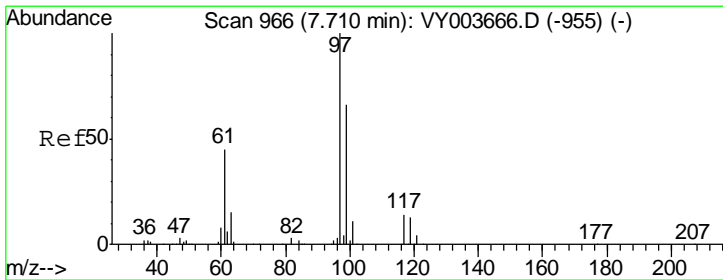
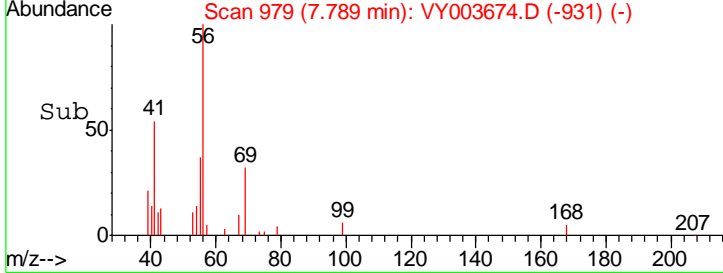
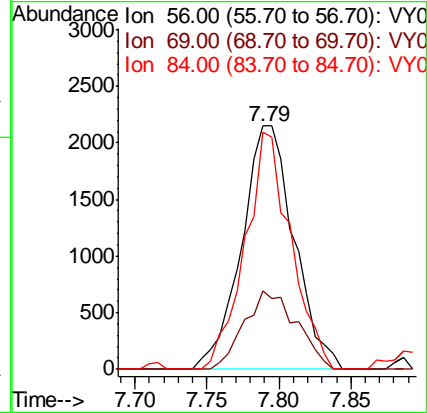
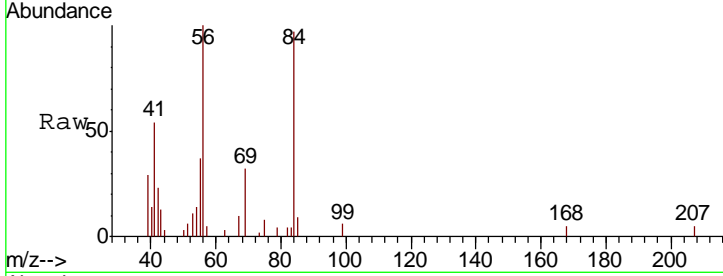




#29
 Cyclohexane
 Concen: 1.111 ug/L
 RT: 7.79 min Scan# 979
 Delta R.T. -0.01 min
 Lab File: VY003674.D
 Acq: 07 Dec 2020 16:46

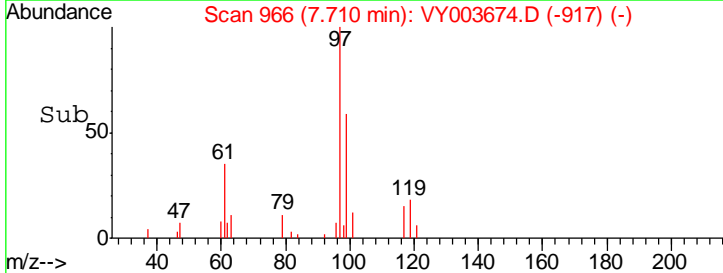
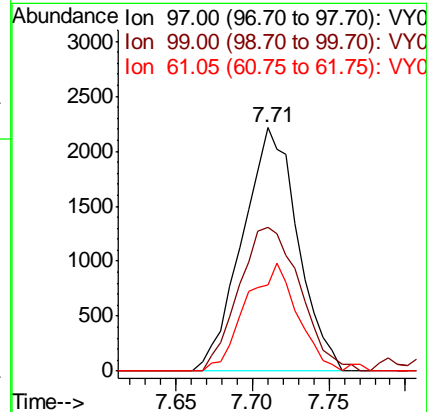
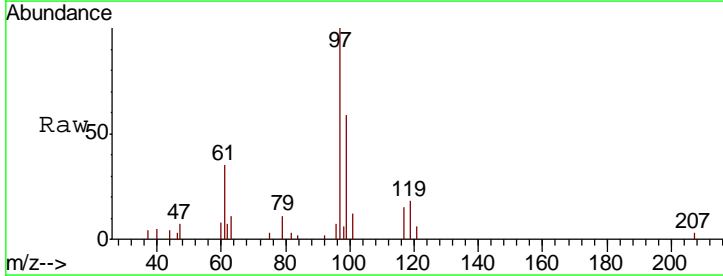
Instrument :
 MSVOA_Y
 ClientSampleId :
 MDL-SOIL-07

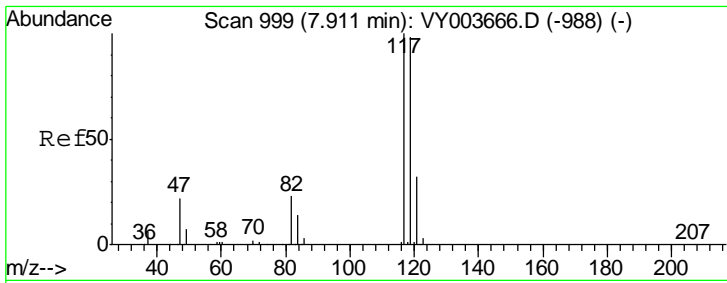
Tgt Ion	Resp	Lower	Upper
56	100		
69	32.0	25.1	37.7
84	84.8	70.6	105.8



#30
 1,1,1-Trichloroethane
 Concen: 1.169 ug/L
 RT: 7.71 min Scan# 966
 Delta R.T. -0.00 min
 Lab File: VY003674.D
 Acq: 07 Dec 2020 16:46

Tgt Ion	Resp	Lower	Upper
97	100		
99	65.3	51.0	76.4
61	41.2	34.6	51.8

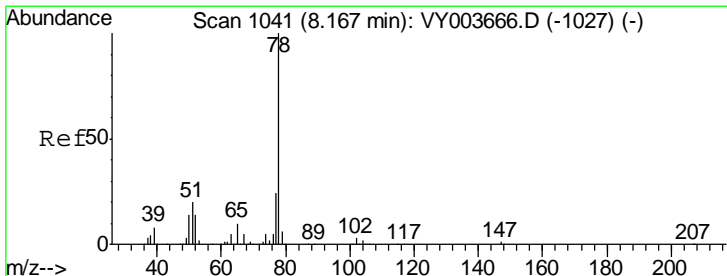
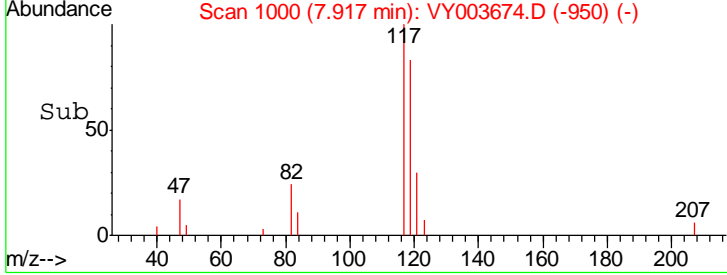
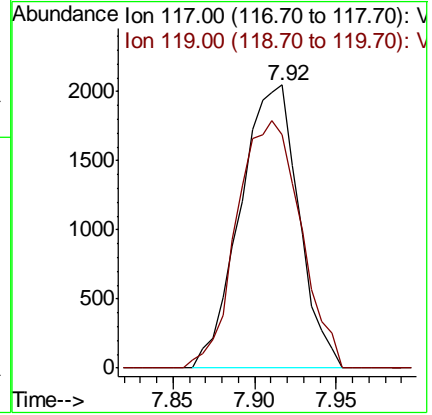
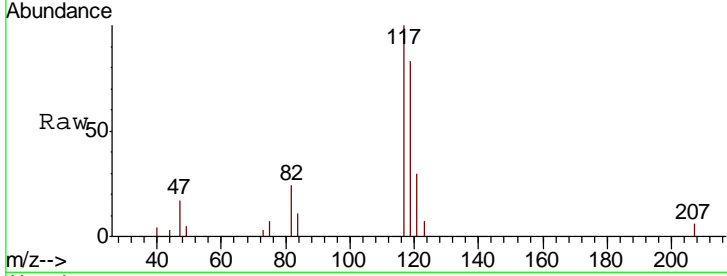




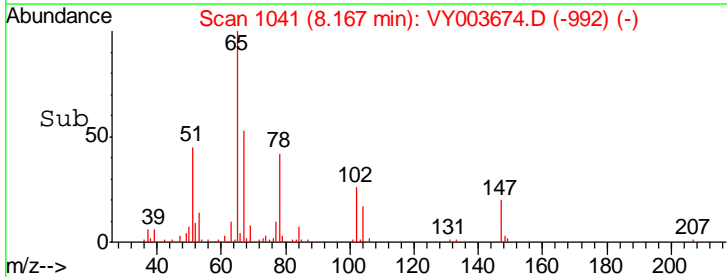
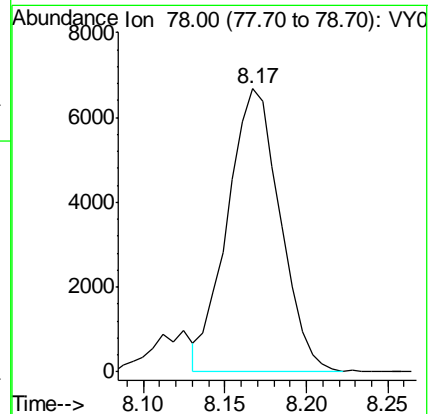
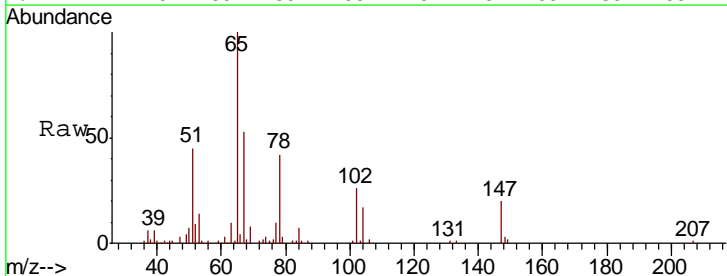
#31
 Carbon tetrachloride
 Concen: 1.181 ug/L
 RT: 7.92 min Scan# 1000
 Delta R.T. 0.01 min
 Lab File: VY003674.D
 Acq: 07 Dec 2020 16:46

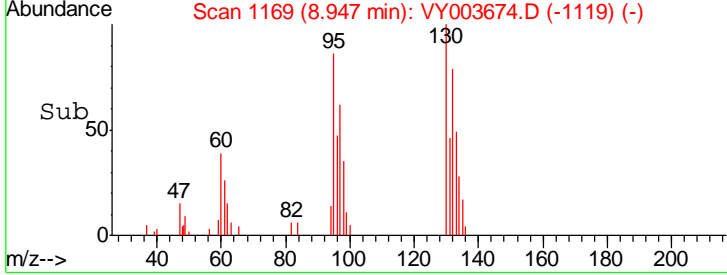
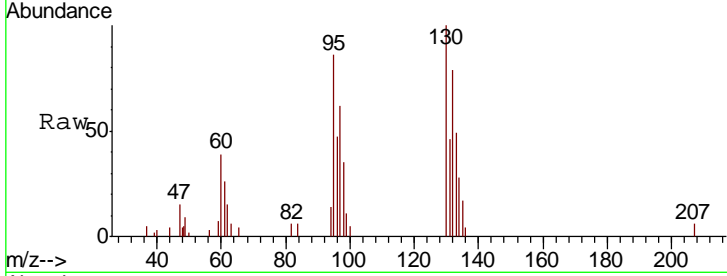
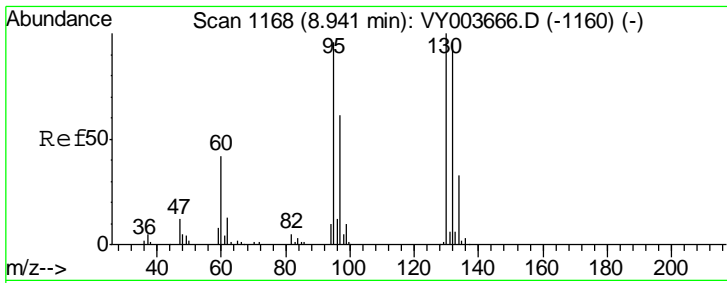
Instrument : MSVOA_Y
 ClientSampled : MDL-SOIL-07

Tgt Ion: 117 Resp: 5109
 Ion Ratio Lower Upper
 117 100
 119 95.3 72.6 109.0



#33
 Benzene
 Concen: 1.156 ug/L
 RT: 8.17 min Scan# 1041
 Delta R.T. -0.00 min
 Lab File: VY003674.D
 Acq: 07 Dec 2020 16:46
 Tgt Ion: 78 Resp: 15008

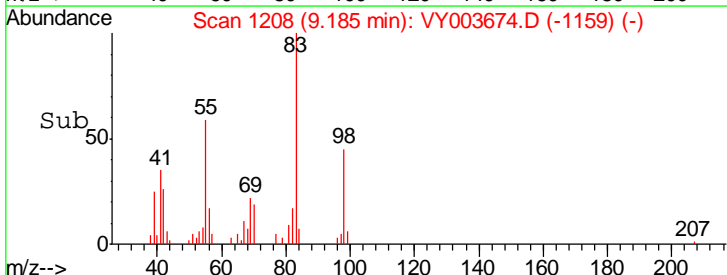
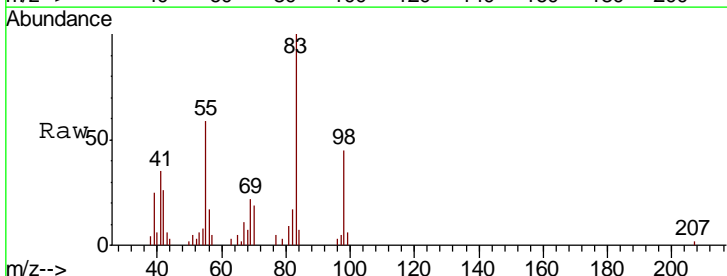
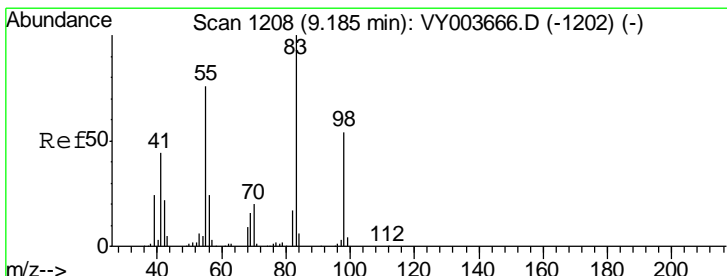
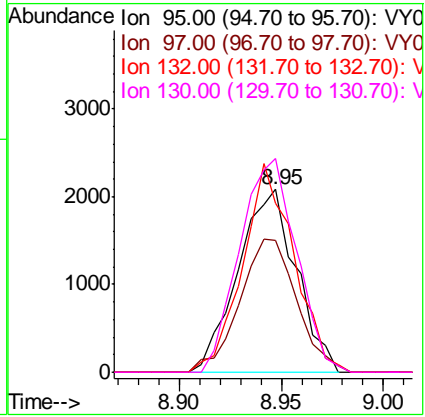




#34
 Trichloroethene
 Concen: 1.183 ug/L
 RT: 8.95 min Scan# 1169
 Delta R.T. 0.01 min
 Lab File: VY003674.D
 Acq: 07 Dec 2020 16:46

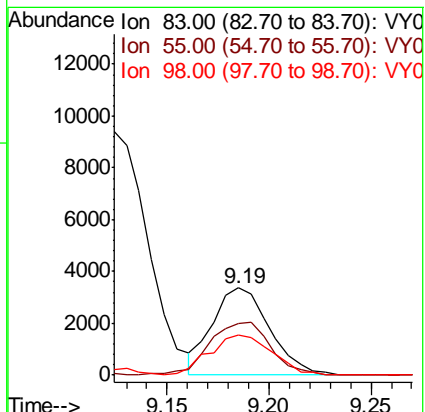
Instrument : MSVOA_Y
 ClientSampled : MDL-SOIL-07

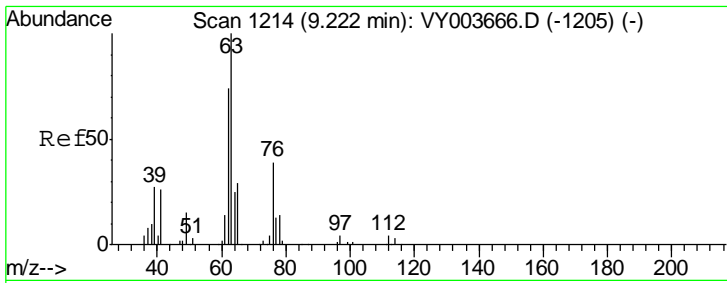
Tgt Ion	Resp	Lower	Upper
95	4133		
97	72.2	46.5	86.5
132	92.3	67.5	125.3
130	116.9	77.3	143.5



#35
 Methylcyclohexane
 Concen: 1.187 ug/L
 RT: 9.19 min Scan# 1208
 Delta R.T. -0.00 min
 Lab File: VY003674.D
 Acq: 07 Dec 2020 16:46

Tgt Ion	Resp	Lower	Upper
83	6529		
55	65.3	55.6	83.4
98	50.3	38.6	58.0

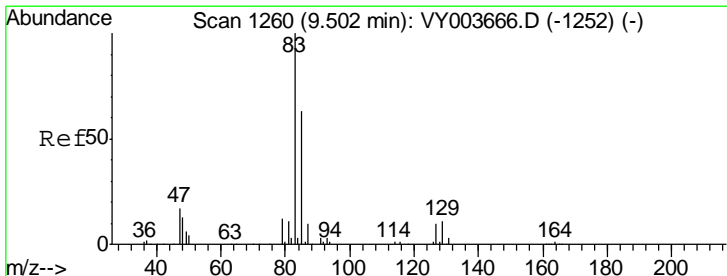
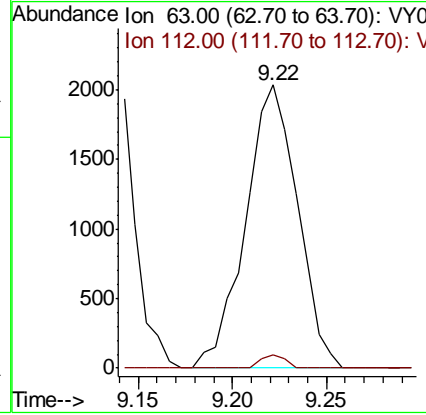
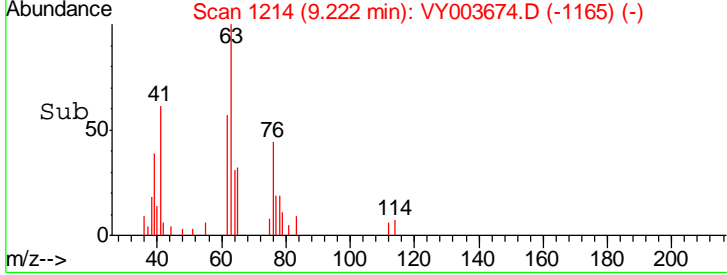
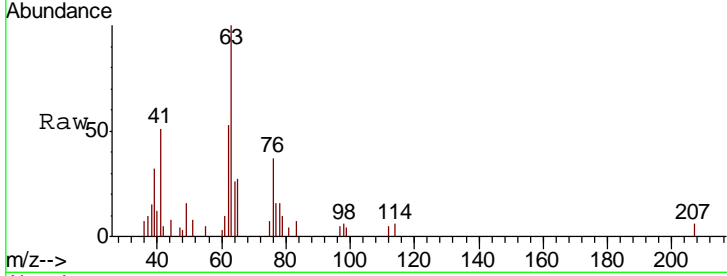




#37
 1,2-Dichloropropane
 Concen: 1.200 ug/L
 RT: 9.22 min Scan# 1214
 Delta R.T. -0.00 min
 Lab File: VY003674.D
 Acq: 07 Dec 2020 16:46

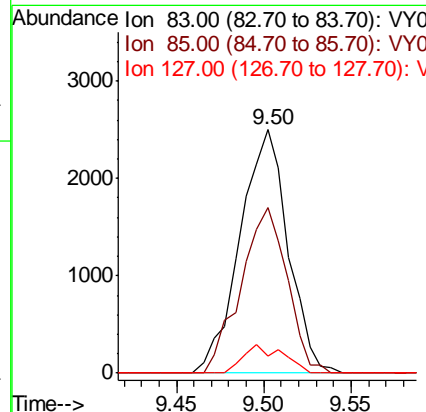
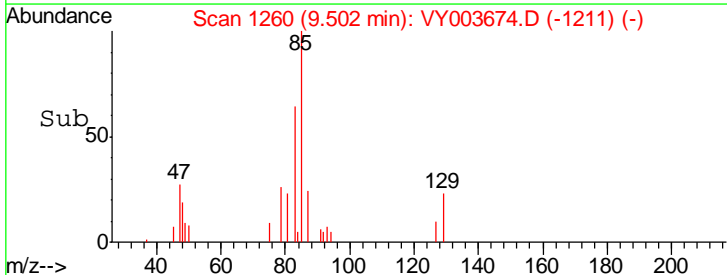
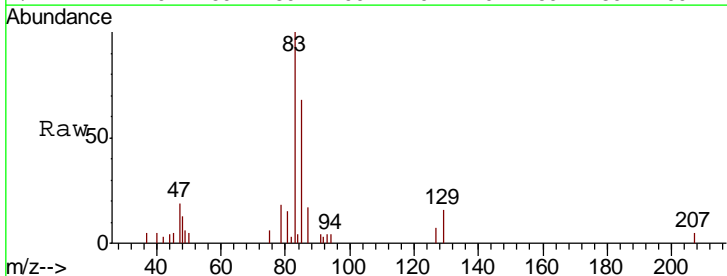
Instrument : MSVOA_Y
 ClientSampled : MDL-SOIL-07

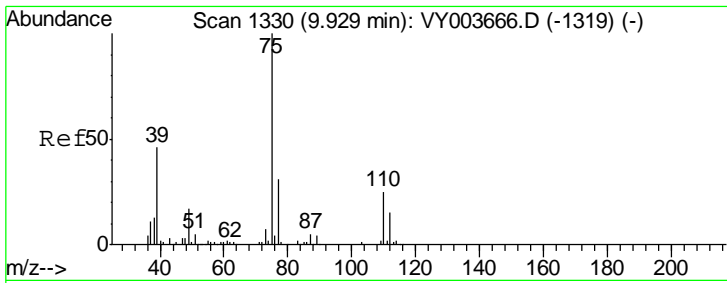
Tgt Ion	Resp	Lower	Upper
63	3892		
112	0.0	4.2	6.2#



#38
 Bromodichloromethane
 Concen: 1.151 ug/L
 RT: 9.50 min Scan# 1260
 Delta R.T. -0.00 min
 Lab File: VY003674.D
 Acq: 07 Dec 2020 16:46

Tgt Ion	Resp	Lower	Upper
83	4775		
85	68.1	39.3	73.1
127	7.1	5.7	8.5

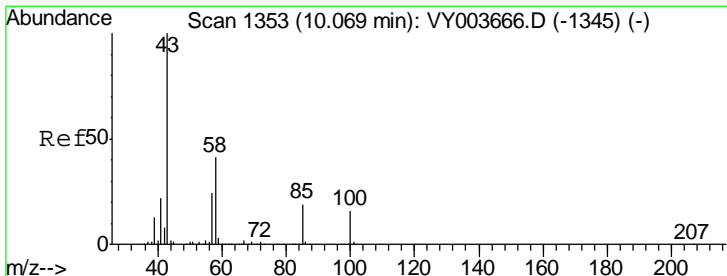
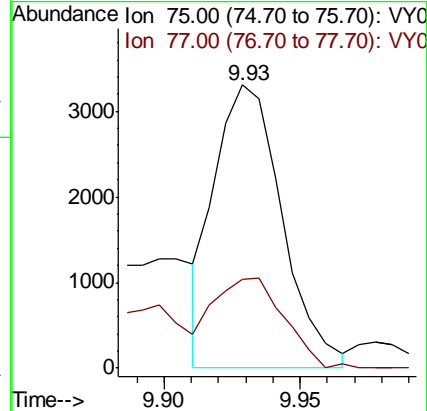
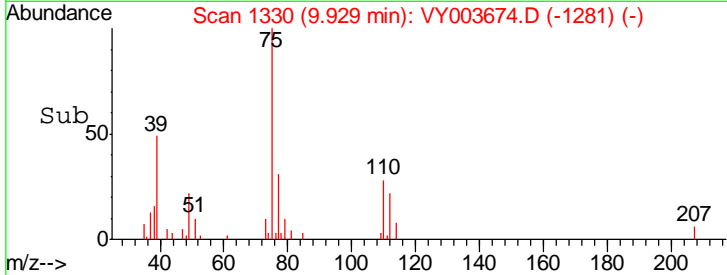
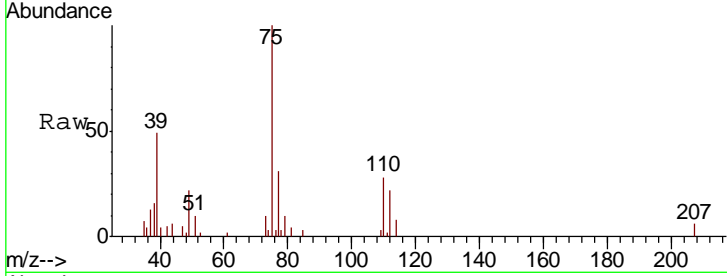




#39
 cis-1,3-Dichloropropene
 Concen: 1.112 ug/L
 RT: 9.93 min Scan# 1330
 Delta R.T. -0.00 min
 Lab File: VY003674.D
 Acq: 07 Dec 2020 16:46

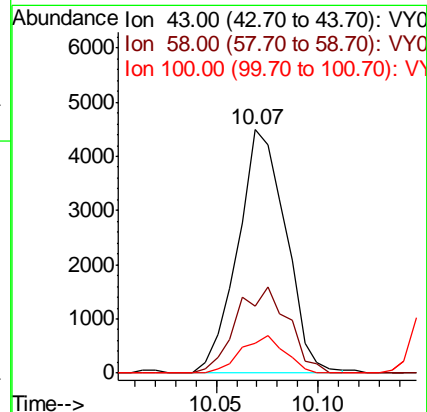
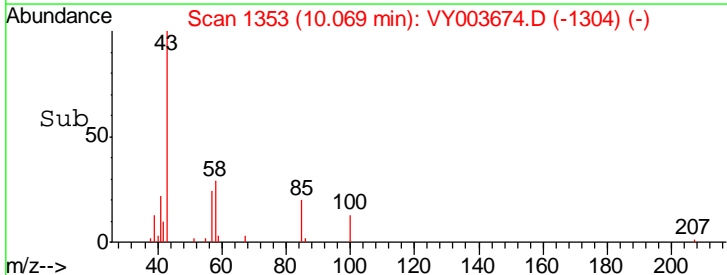
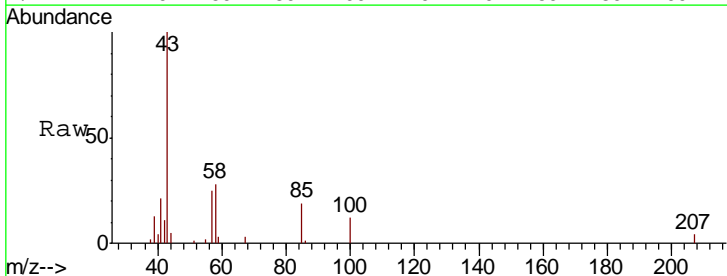
Instrument :
 MSVOA_Y
 ClientSampled :
 MDL-SOIL-07

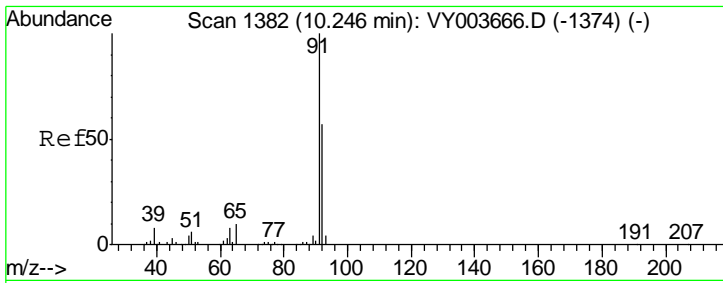
Tgt Ion	Resp	Lower	Upper
75	5690		
77	31.3	23.2	43.2



#40
 4-Methyl-2-pentanone
 Concen: 2.502 ug/L
 RT: 10.07 min Scan# 1353
 Delta R.T. -0.00 min
 Lab File: VY003674.D
 Acq: 07 Dec 2020 16:46

Tgt Ion	Resp	Lower	Upper
43	7346		
58	38.1	32.6	48.8
100	14.0	13.1	19.7



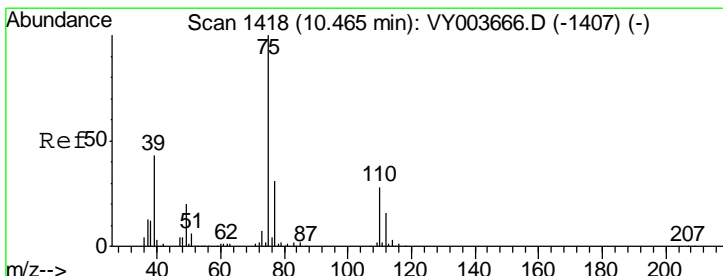
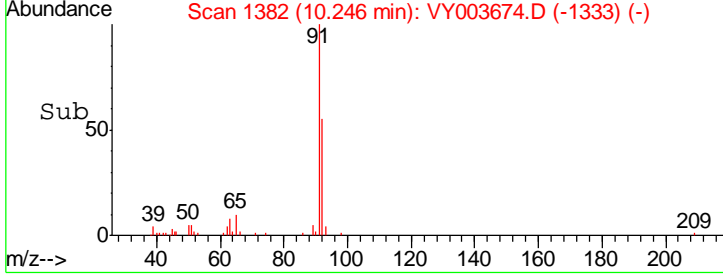
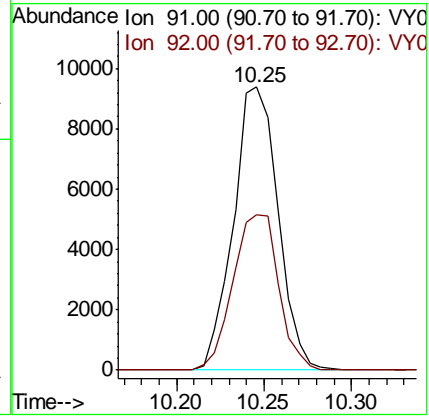
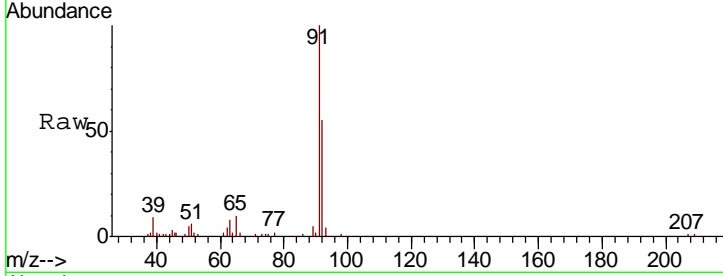


#42
 Toluene
 Concen: 1.205 ug/L
 RT: 10.25 min Scan# 1382
 Delta R.T. -0.00 min
 Lab File: VY003674.D
 Acq: 07 Dec 2020 16:46

Instrument : MSVOA_Y
 ClientSampled : MDL-SOIL-07

Tgt Ion: 91 Resp: 16661

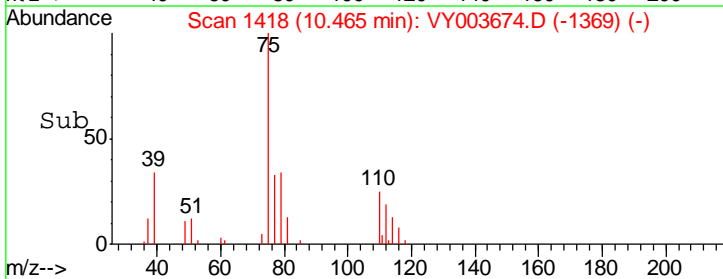
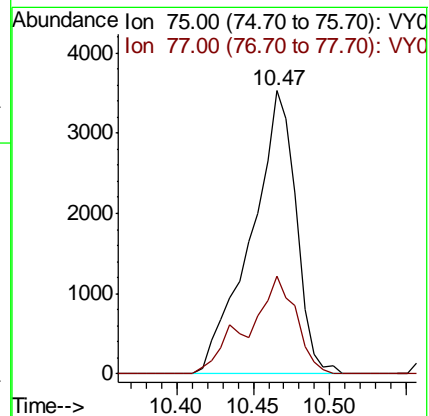
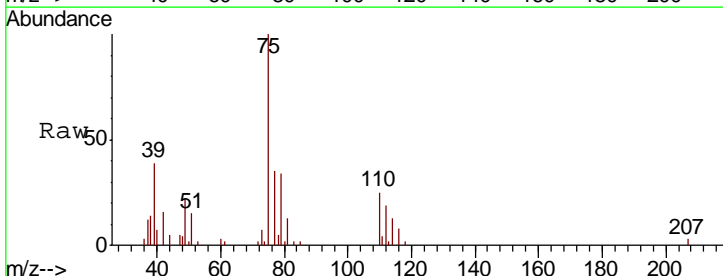
Ion	Ratio	Lower	Upper
91	100		
92	54.8	39.5	73.3

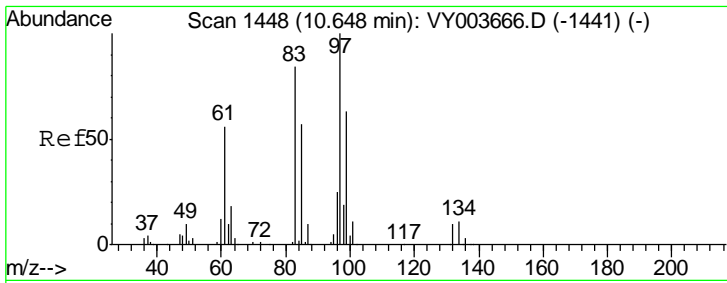


#44
 trans-1,3-Dichloropropene
 Concen: 1.519 ug/L
 RT: 10.47 min Scan# 1418
 Delta R.T. -0.00 min
 Lab File: VY003674.D
 Acq: 07 Dec 2020 16:46

Tgt Ion: 75 Resp: 7239

Ion	Ratio	Lower	Upper
75	100		
77	34.5	24.7	45.9

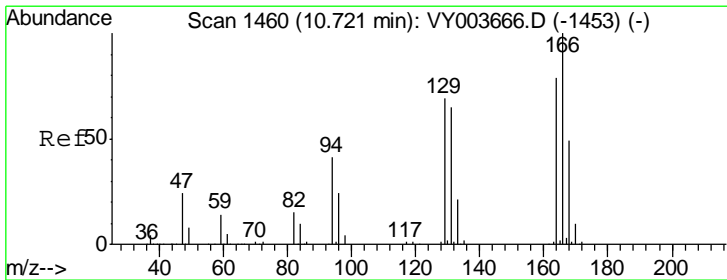
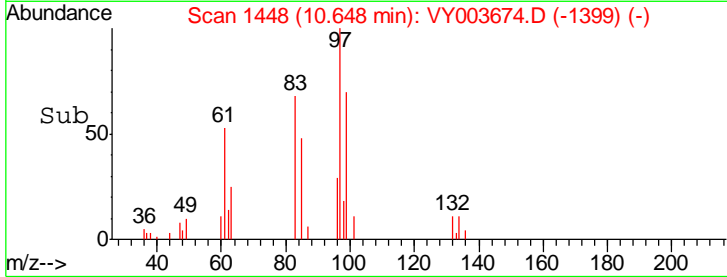
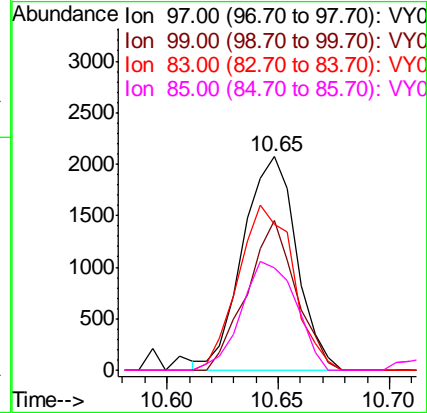
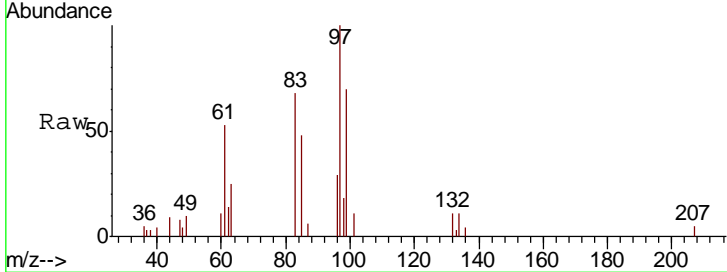




#45
 1,1,2-Trichloroethane
 Concen: 1.229 ug/L
 RT: 10.65 min Scan# 1448
 Delta R.T. -0.00 min
 Lab File: VY003674.D
 Acq: 07 Dec 2020 16:46

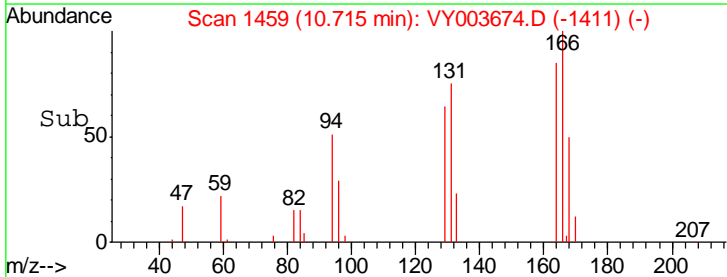
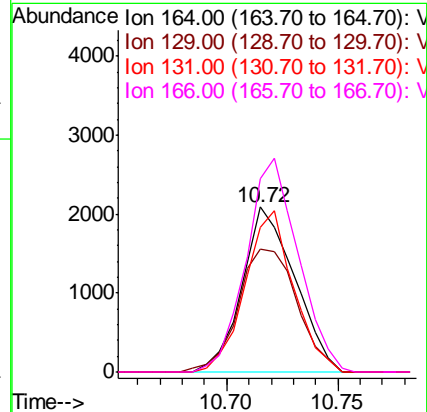
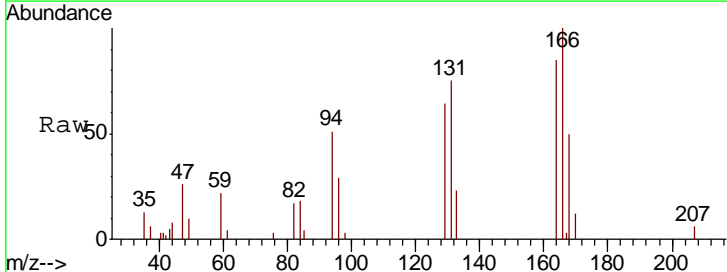
Instrument : MSVOA_Y
 ClientSampled : MDL-SOIL-07

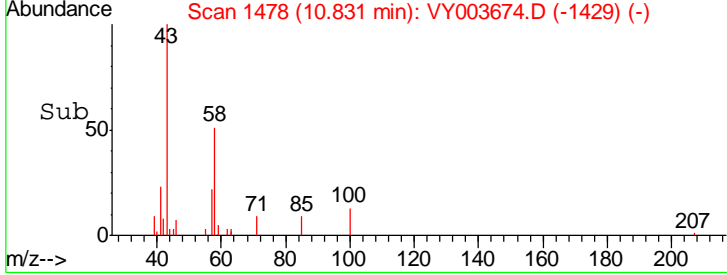
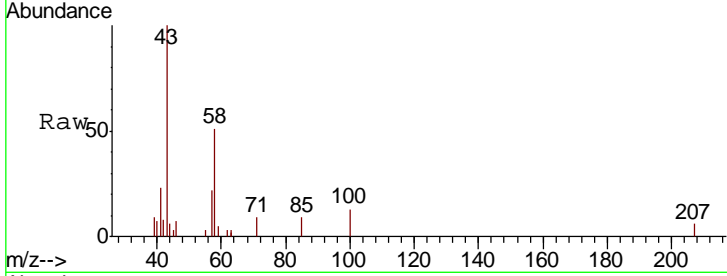
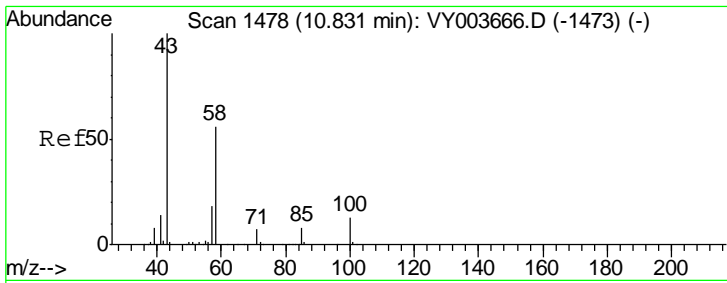
Tgt Ion	Resp	Lower	Upper
97	100		
99	70.4	48.2	89.6
83	68.5	64.8	120.3
85	47.8	35.1	65.1



#46
 Tetrachloroethene
 Concen: 1.227 ug/L
 RT: 10.72 min Scan# 1459
 Delta R.T. -0.01 min
 Lab File: VY003674.D
 Acq: 07 Dec 2020 16:46

Tgt Ion	Resp	Lower	Upper
164	100		
129	74.6	53.4	99.2
131	87.8	60.8	112.8
166	117.3	87.2	162.0

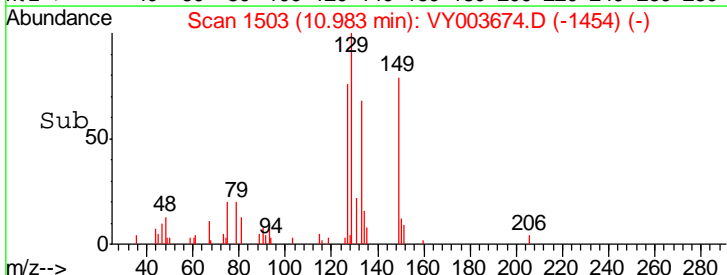
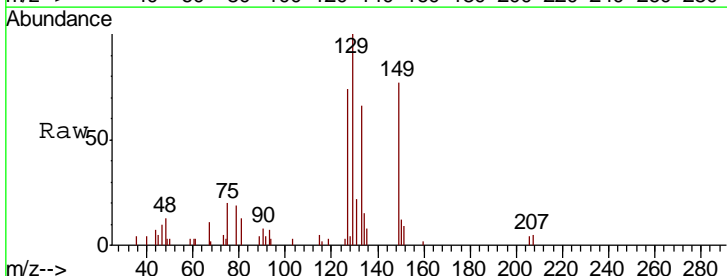
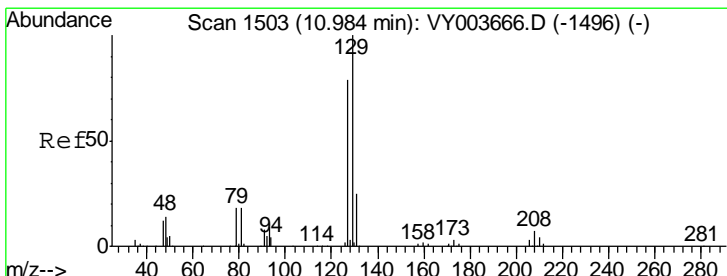
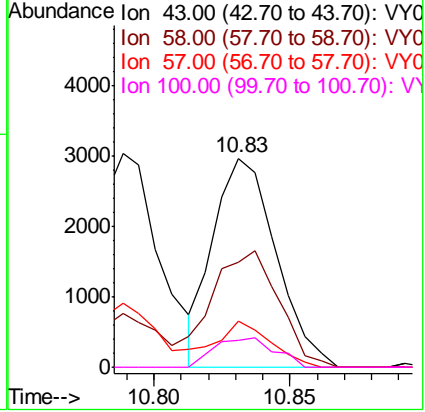




#48
 2-Hexanone
 Concen: 2.322 ug/L
 RT: 10.83 min Scan# 1478
 Delta R.T. -0.00 min
 Lab File: VY003674.D
 Acq: 07 Dec 2020 16:46

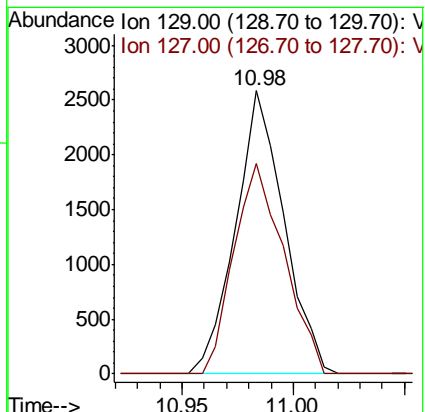
Instrument : MSVOA_Y
 ClientSampled : MDL-SOIL-07

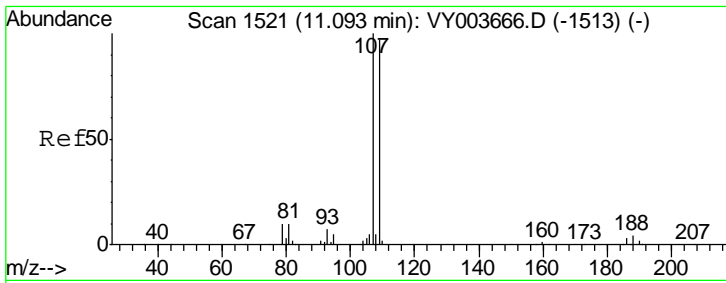
Tgt Ion	Resp	Lower	Upper
43	100		
58	60.2	44.3	66.5
57	20.9	12.6	19.0#
100	13.5	10.6	16.0



#49
 Dibromochloromethane
 Concen: 1.201 ug/L
 RT: 10.98 min Scan# 1503
 Delta R.T. -0.00 min
 Lab File: VY003674.D
 Acq: 07 Dec 2020 16:46

Tgt Ion	Resp	Lower	Upper
129	100		
127	74.4	48.0	89.2

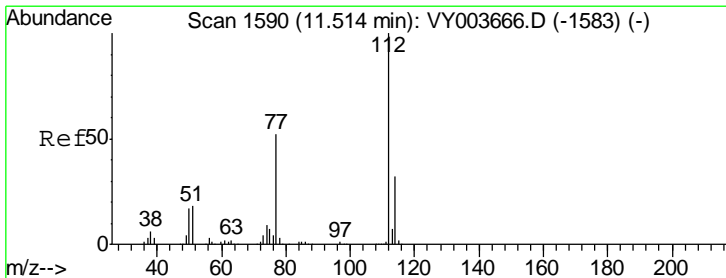
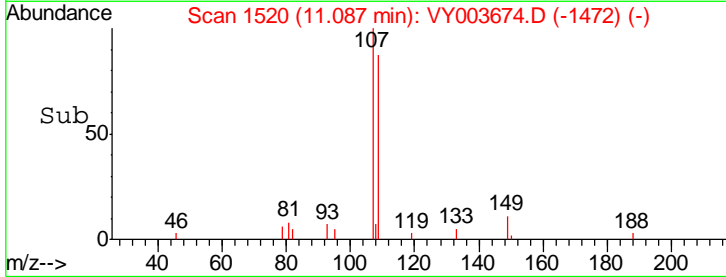
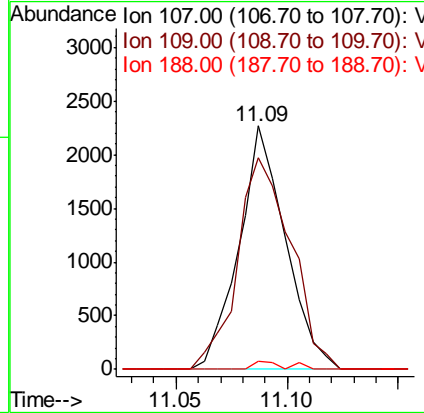
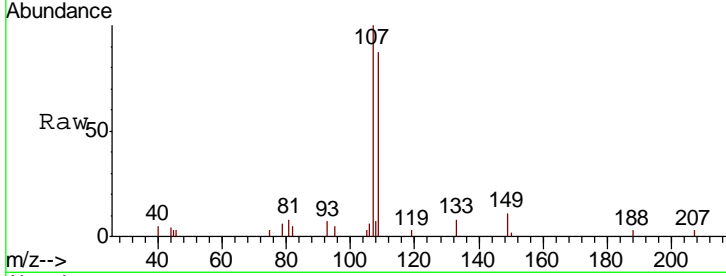




#50
 1,2-Dibromoethane
 Concen: 1.208 ug/L
 RT: 11.09 min Scan# 1520
 Delta R.T. -0.01 min
 Lab File: VY003674.D
 Acq: 07 Dec 2020 16:46

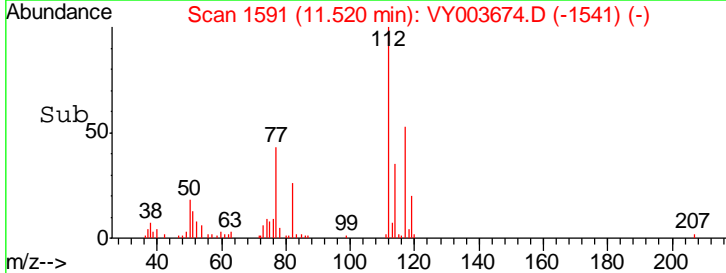
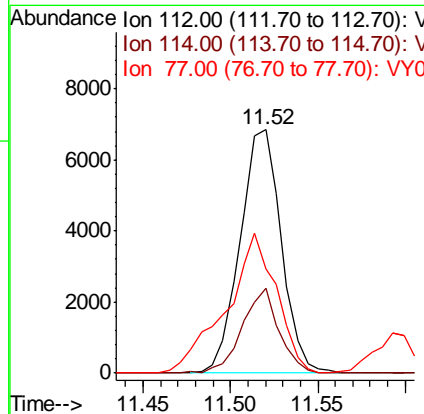
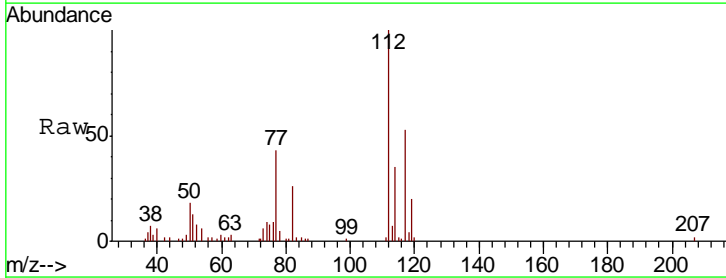
Instrument :
 MSVOA_Y
 ClientSampled :
 MDL-SOIL-07

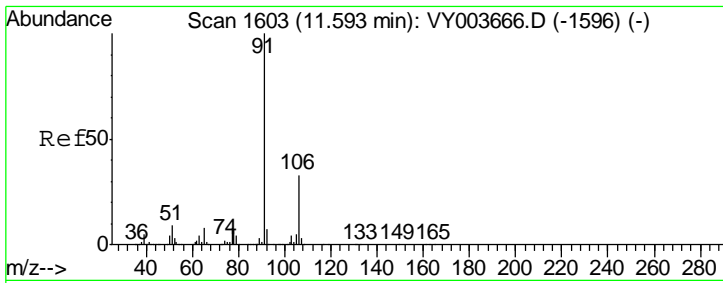
Tgt Ion	Resp	Lower	Upper
107	100		
109	86.7	61.9	114.9
188	3.4	2.1	3.1#



#51
 Chlorobenzene
 Concen: 1.230 ug/L
 RT: 11.52 min Scan# 1591
 Delta R.T. 0.01 min
 Lab File: VY003674.D
 Acq: 07 Dec 2020 16:46

Tgt Ion	Resp	Lower	Upper
112	100		
114	34.9	22.0	40.8
77	42.7	38.4	57.6

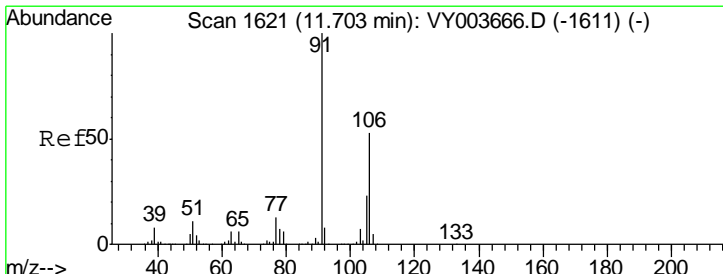
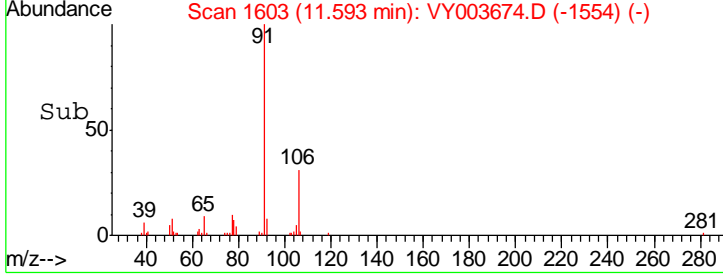
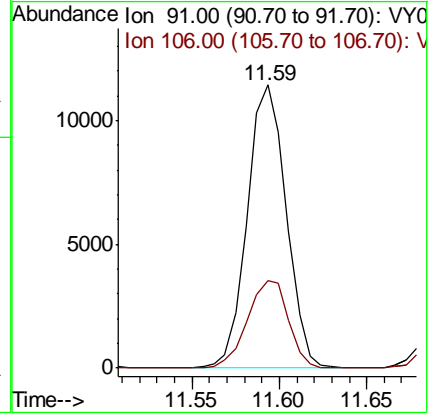
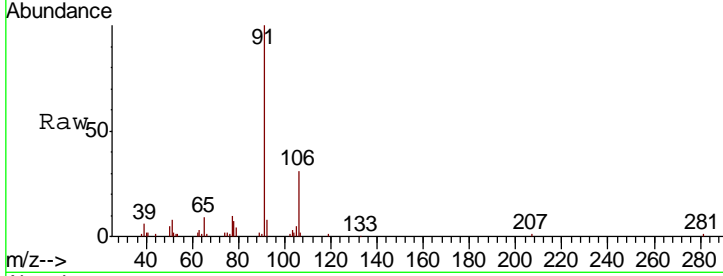




#52
 Ethylbenzene
 Concen: 1.184 ug/L
 RT: 11.59 min Scan# 1603
 Delta R.T. -0.00 min
 Lab File: VY003674.D
 Acq: 07 Dec 2020 16:46

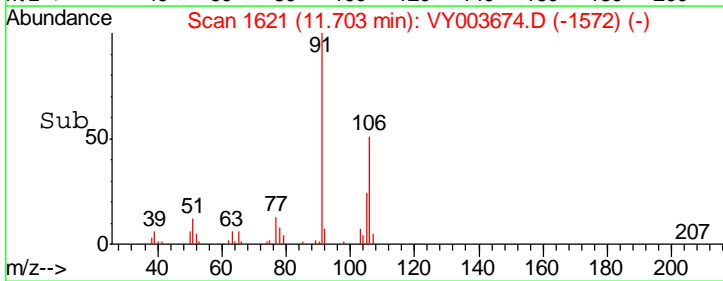
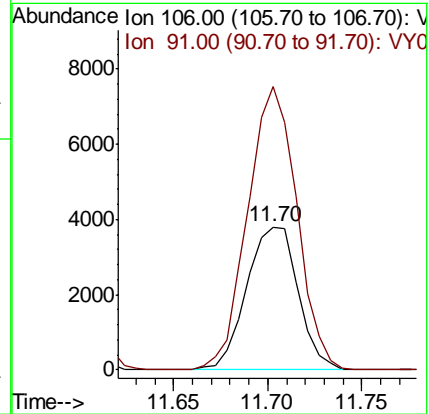
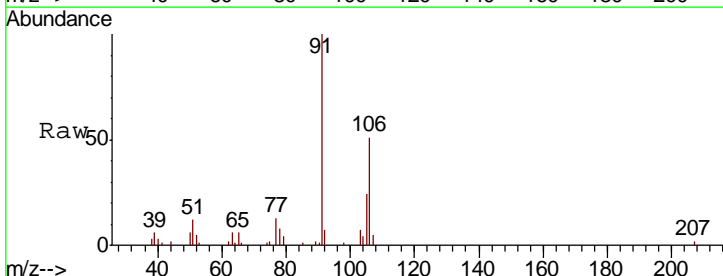
Instrument : MSVOA_Y
 ClientSampled : MDL-SOIL-07

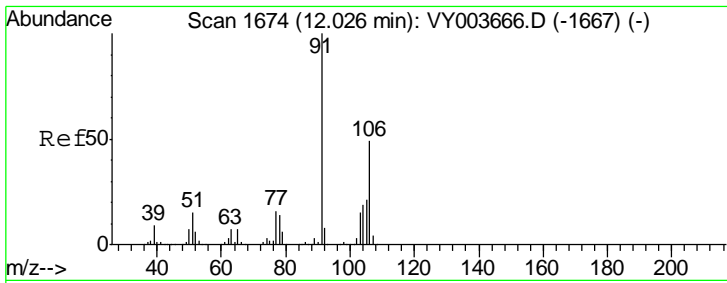
Tgt Ion	Resp	Lower	Upper
91	17662		
106	31.1	23.7	43.9



#53
 m,p-Xylene
 Concen: 1.235 ug/L
 RT: 11.70 min Scan# 1621
 Delta R.T. -0.00 min
 Lab File: VY003674.D
 Acq: 07 Dec 2020 16:46

Tgt Ion	Resp	Lower	Upper
106	7201		
91	197.9	132.7	246.5

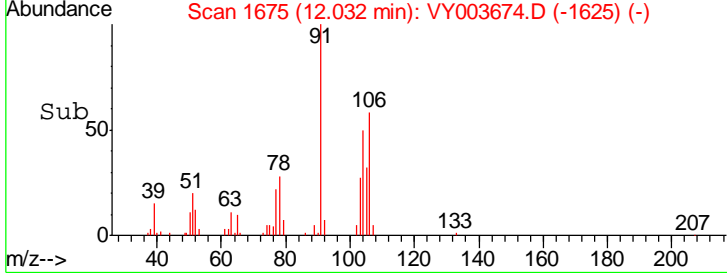
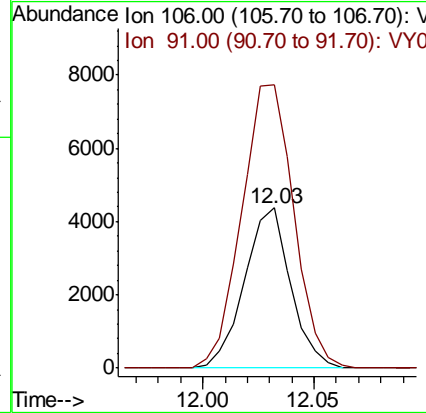
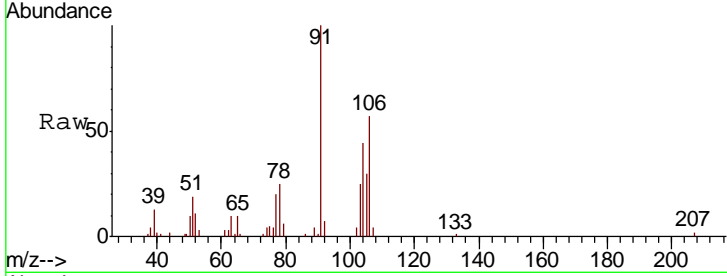




#54
 o-Xylene
 Concen: 1.133 ug/L
 RT: 12.03 min Scan# 1675
 Delta R.T. 0.01 min
 Lab File: VY003674.D
 Acq: 07 Dec 2020 16:46

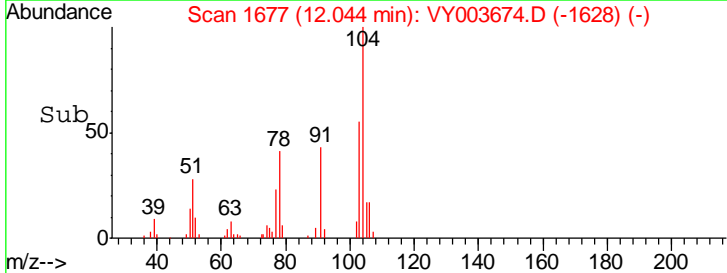
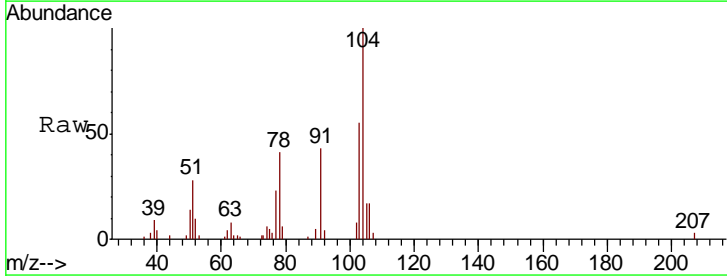
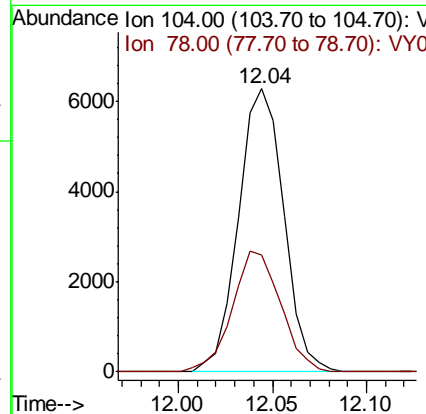
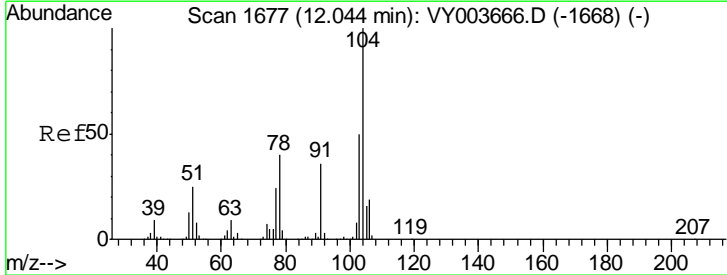
Instrument : MSVOA_Y
 Client Sampled : MDL-SOIL-07

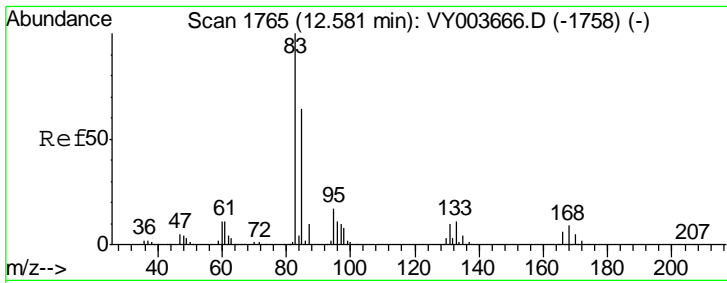
Tgt Ion:106 Resp: 6314
 Ion Ratio Lower Upper
 106 100
 91 176.6 141.7 263.1



#55
 Styrene
 Concen: 1.098 ug/L
 RT: 12.04 min Scan# 1677
 Delta R.T. -0.00 min
 Lab File: VY003674.D
 Acq: 07 Dec 2020 16:46

Tgt Ion:104 Resp: 10450
 Ion Ratio Lower Upper
 104 100
 78 41.5 28.1 52.1

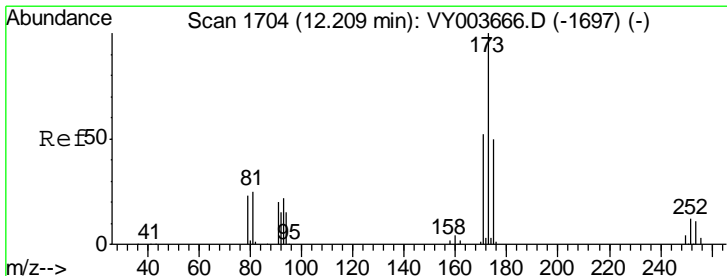
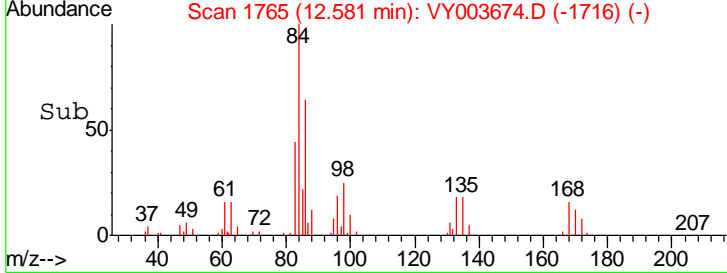
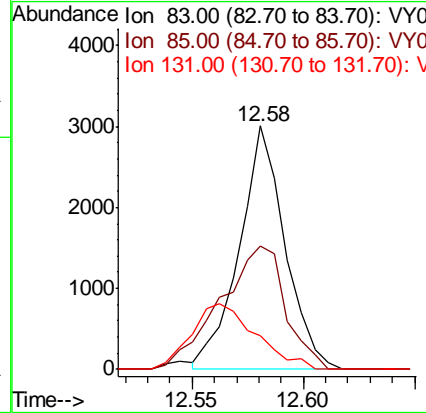
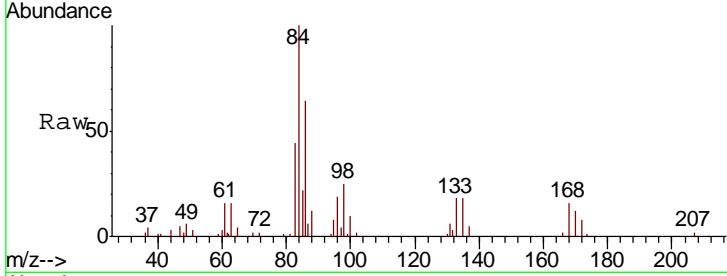




#57
 1,1,2,2-Tetrachloroethane
 Concen: 1.398 ug/L
 RT: 12.58 min Scan# 1765
 Delta R.T. -0.00 min
 Lab File: VY003674.D
 Acq: 07 Dec 2020 16:46

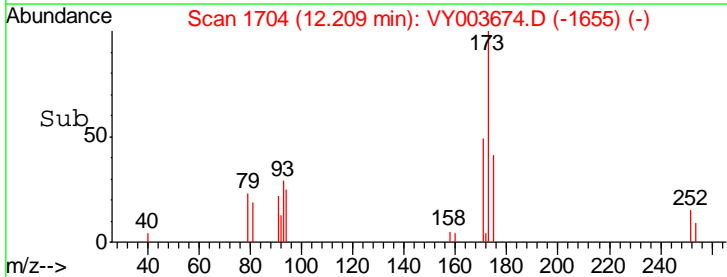
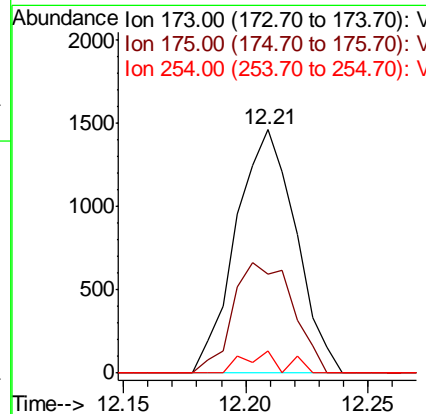
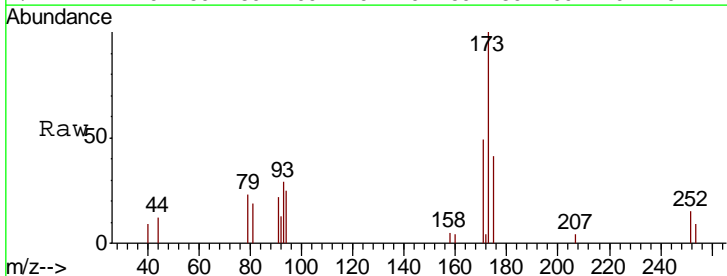
Instrument : MSVOA_Y
 ClientSampled : MDL-SOIL-07

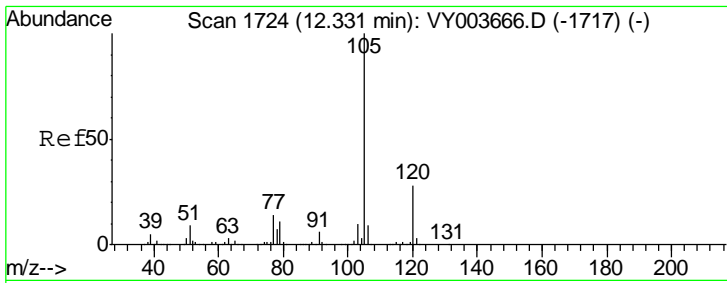
Tgt Ion	Resp	Lower	Upper
83	100		
85	50.5	46.4	86.2
131	13.6	8.0	12.0#



#59
 Bromoform
 Concen: 1.131 ug/L
 RT: 12.21 min Scan# 1704
 Delta R.T. -0.00 min
 Lab File: VY003674.D
 Acq: 07 Dec 2020 16:46

Tgt Ion	Resp	Lower	Upper
173	100		
175	45.4	41.2	61.8
254	4.4	3.2	4.8

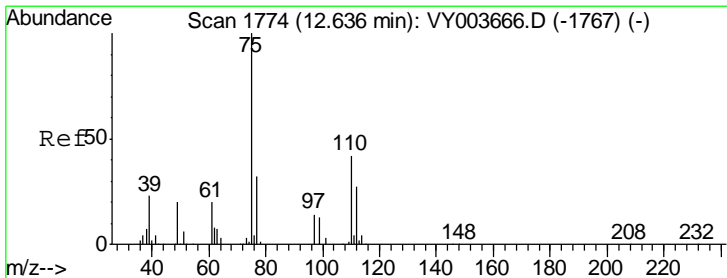
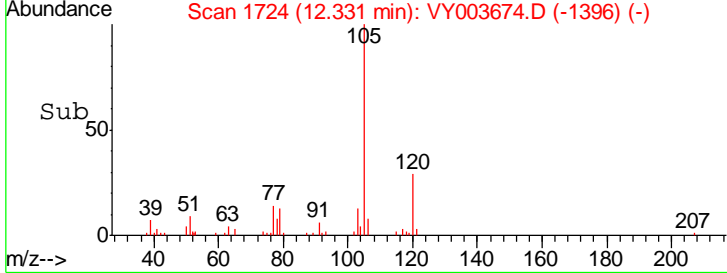
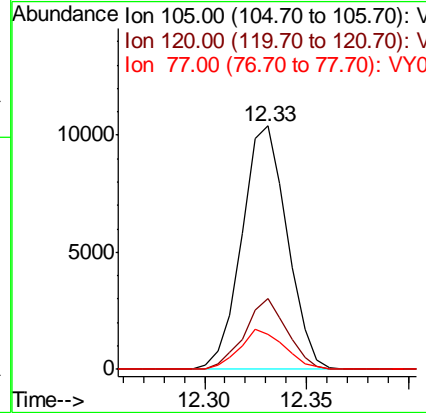
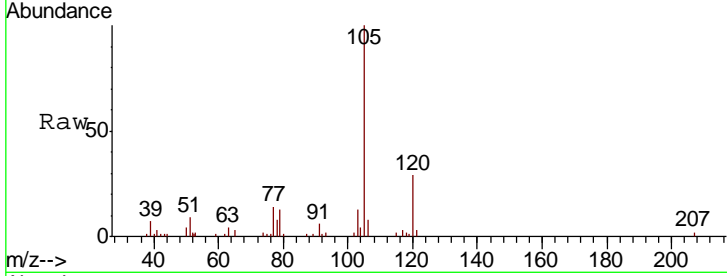




#60
 Isopropylbenzene
 Concen: 1.120 ug/L
 RT: 12.33 min Scan# 1724
 Delta R.T. -0.00 min
 Lab File: VY003674.D
 Acq: 07 Dec 2020 16:46

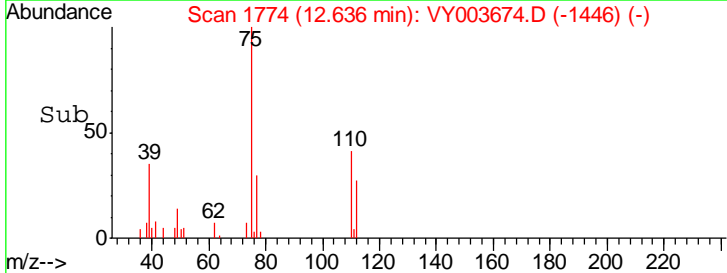
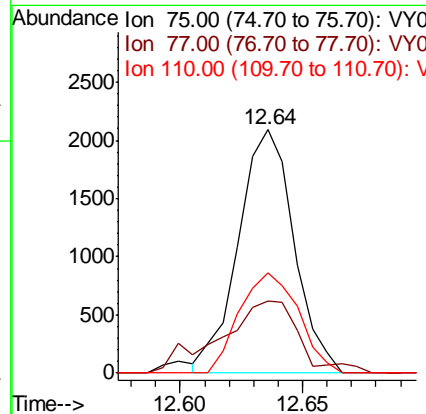
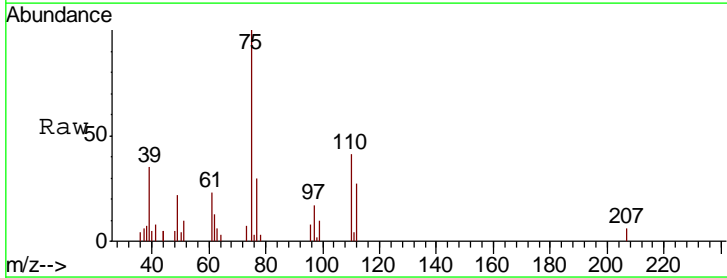
Instrument : MSVOA_Y
 ClientSampled : MDL-SOIL-07

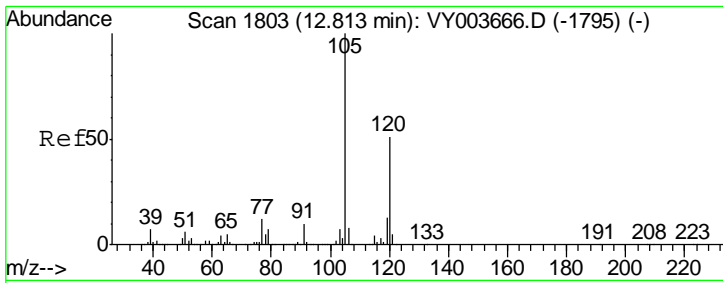
Tgt Ion	Resp	Lower	Upper
105	16037		
120	27.1	22.6	33.8
77	16.1	11.9	17.9



#61
 1,2,3-Trichloropropane
 Concen: 1.258 ug/L
 RT: 12.64 min Scan# 1774
 Delta R.T. -0.00 min
 Lab File: VY003674.D
 Acq: 07 Dec 2020 16:46

Tgt Ion	Resp	Lower	Upper
75	3304		
77	34.8	29.0	43.6
110	43.5	33.3	49.9

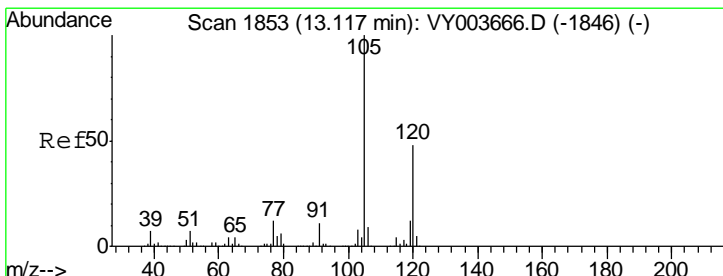
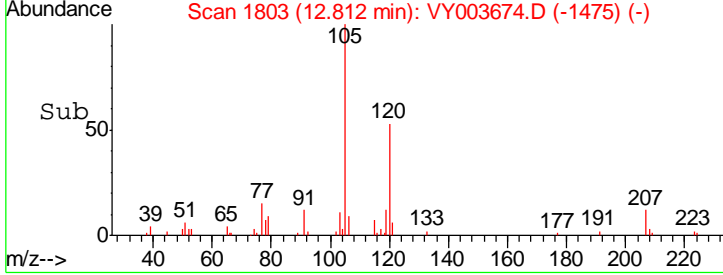
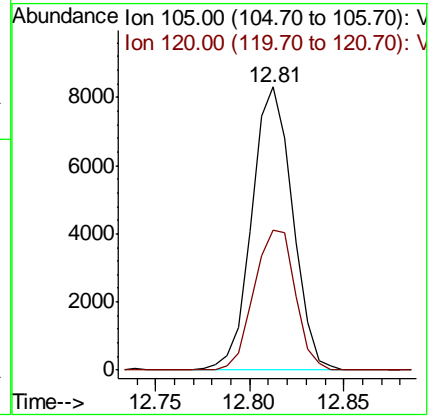
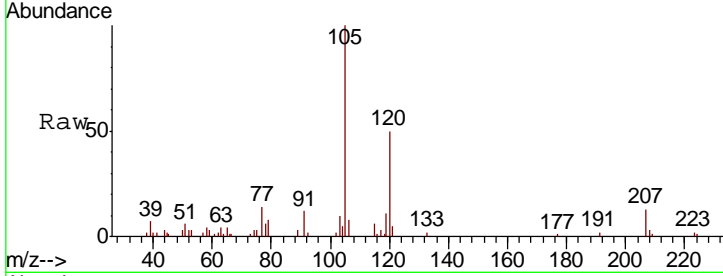




#62
 1,3,5-Trimethylbenzene
 Concen: 1.096 ug/L
 RT: 12.81 min Scan# 1803
 Delta R.T. -0.00 min
 Lab File: VY003674.D
 Acq: 07 Dec 2020 16:46

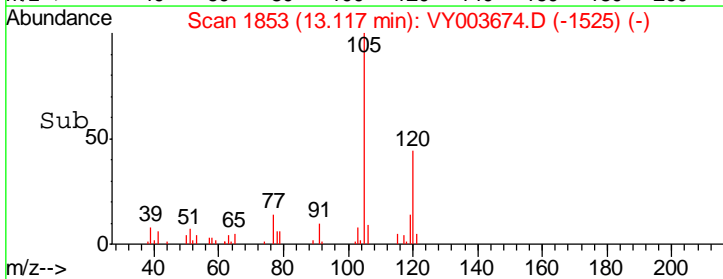
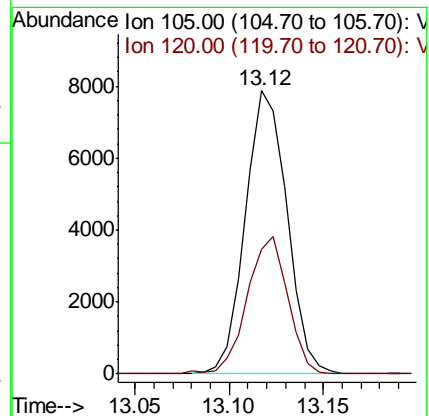
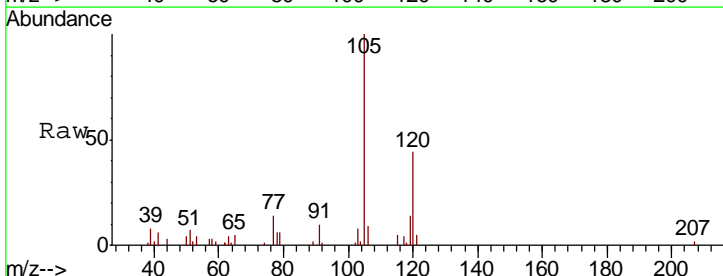
Instrument : MSVOA_Y
 ClientSampled : MDL-SOIL-07

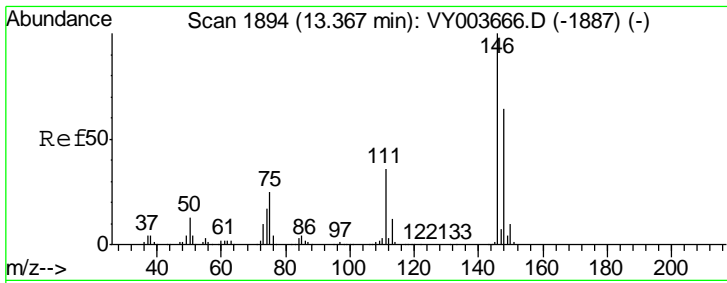
Tgt Ion	Resp	Lower	Upper
105	12449		
120	49.9	42.2	63.2



#63
 1,2,4-Trimethylbenzene
 Concen: 1.073 ug/L
 RT: 13.12 min Scan# 1853
 Delta R.T. -0.00 min
 Lab File: VY003674.D
 Acq: 07 Dec 2020 16:46

Tgt Ion	Resp	Lower	Upper
105	12102		
120	46.9	39.0	58.6

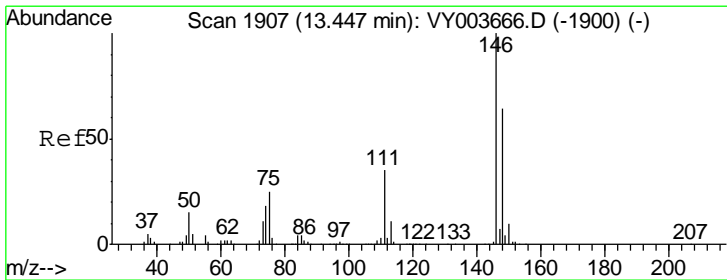
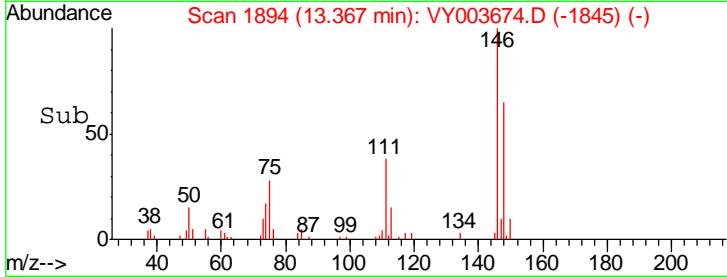
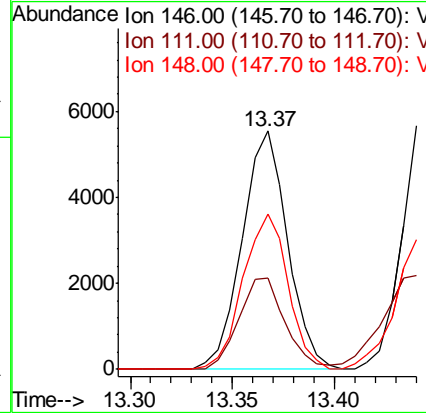
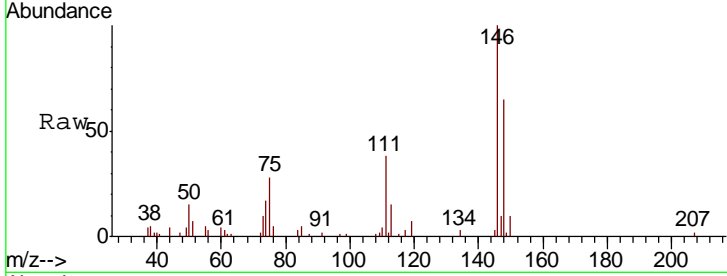




#64
 1,3-Dichlorobenzene
 Concen: 1.237 ug/L
 RT: 13.37 min Scan# 1894
 Delta R.T. -0.00 min
 Lab File: VY003674.D
 Acq: 07 Dec 2020 16:46

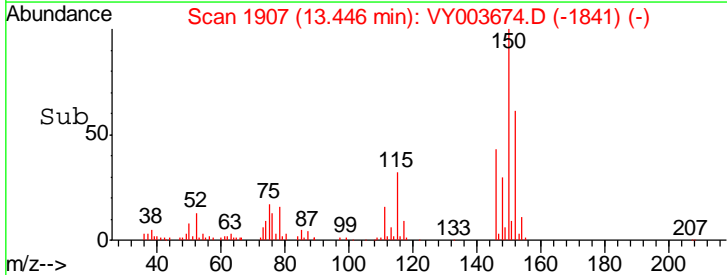
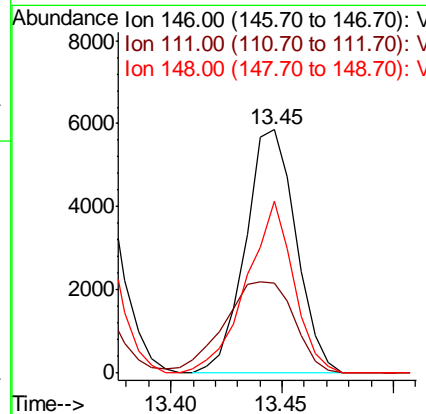
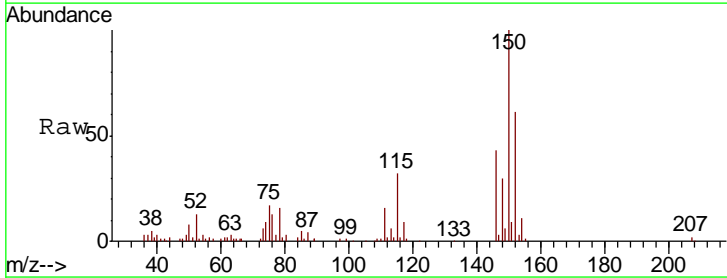
Instrument :
 MSVOA_Y
 ClientSampled :
 MDL-SOIL-07

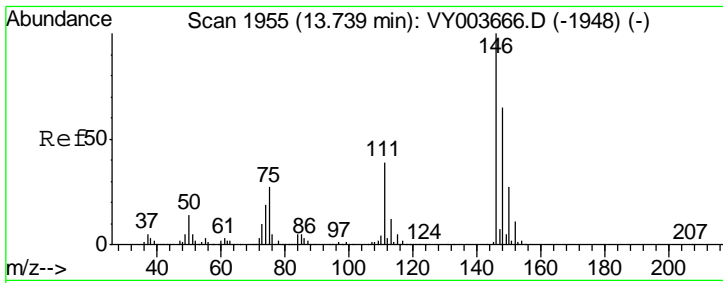
Tgt Ion	Resp	Lower	Upper
146	100		
111	38.2	25.3	47.1
148	67.7	41.4	76.8



#65
 1,4-Dichlorobenzene
 Concen: 1.321 ug/L
 RT: 13.45 min Scan# 1907
 Delta R.T. -0.00 min
 Lab File: VY003674.D
 Acq: 07 Dec 2020 16:46

Tgt Ion	Resp	Lower	Upper
146	100		
111	37.2	26.9	50.1
148	70.6	44.9	83.3

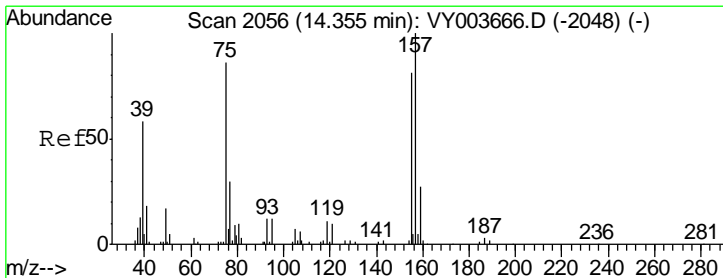
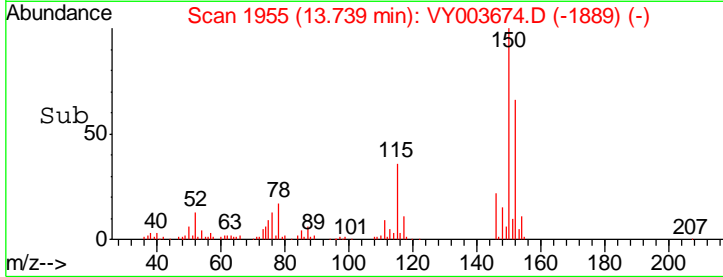
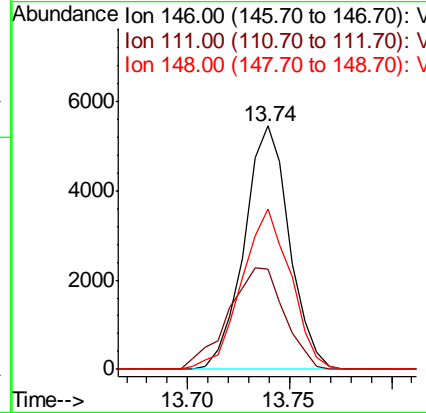
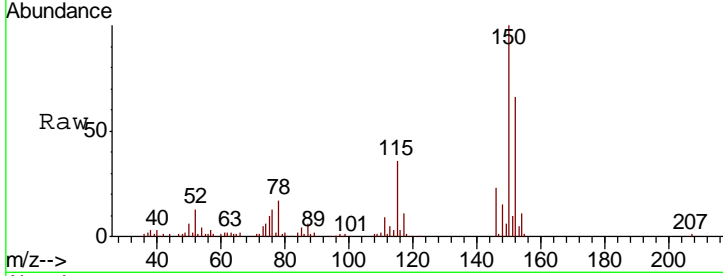




#67
 1,2-Dichlorobenzene
 Concen: 1.302 ug/L
 RT: 13.74 min Scan# 1955
 Delta R.T. -0.00 min
 Lab File: VY003674.D
 Acq: 07 Dec 2020 16:46

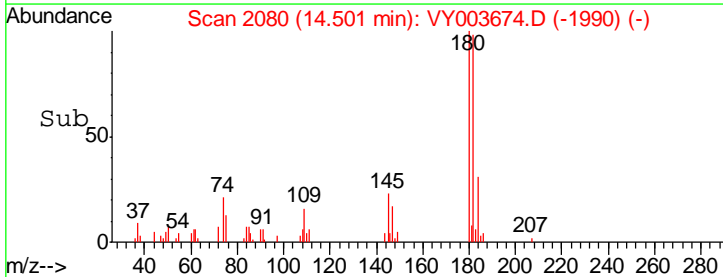
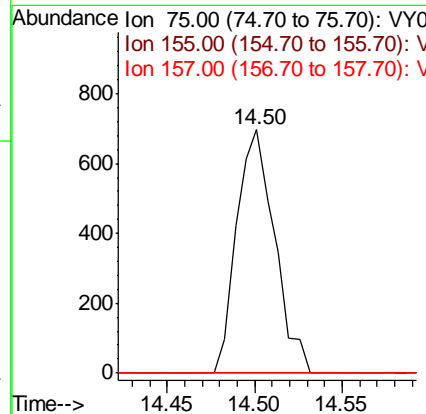
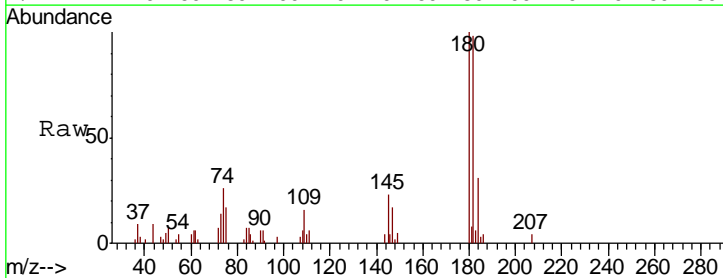
Instrument :
 MSVOA_Y
 ClientSampled :
 MDL-SOIL-07

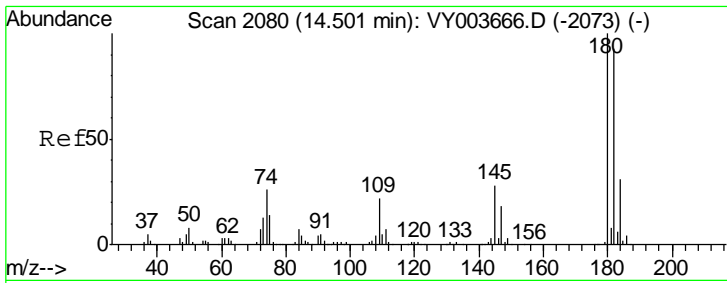
Tgt Ion	Resp	Lower	Upper
146	100		
111	41.0	32.5	48.7
148	66.0	48.8	73.2



#68
 1,2-Dibromo-3-chloropropane
 Concen: 1.816 ug/L
 RT: 14.50 min Scan# 2080
 Delta R.T. 0.15 min
 Lab File: VY003674.D
 Acq: 07 Dec 2020 16:46

Tgt Ion	Resp	Lower	Upper
75	100		
155	0.0	69.5	104.3#
157	0.0	111.3	166.9#

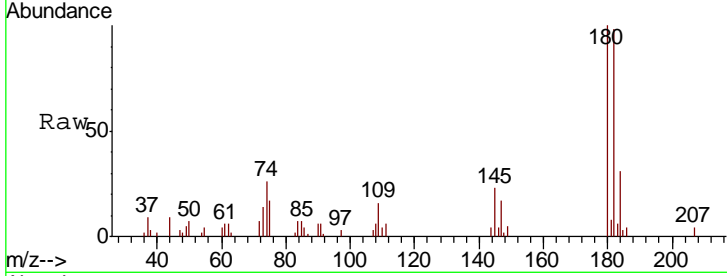




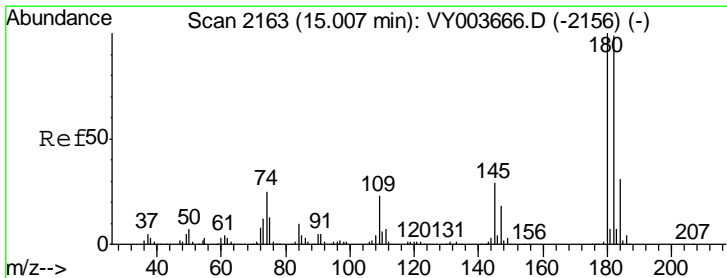
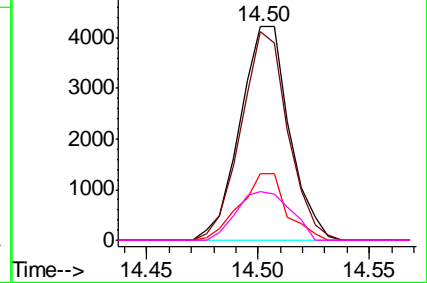
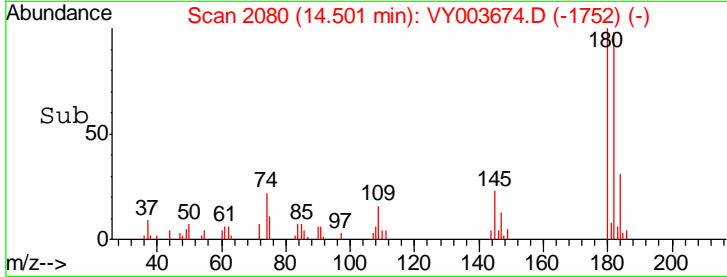
#69
 1,3,5-Trichlorobenzene
 Concen: 1.322 ug/L
 RT: 14.50 min Scan# 2080
 Delta R.T. -0.00 min
 Lab File: VY003674.D
 Acq: 07 Dec 2020 16:46

Instrument : MSVOA_Y
 Client Sampled : MDL-SOIL-07

Tgt Ion	Resp	Lower	Upper
180	100		
182	93.3	80.1	120.1
184	29.5	24.4	36.6
145	25.0	22.9	34.3

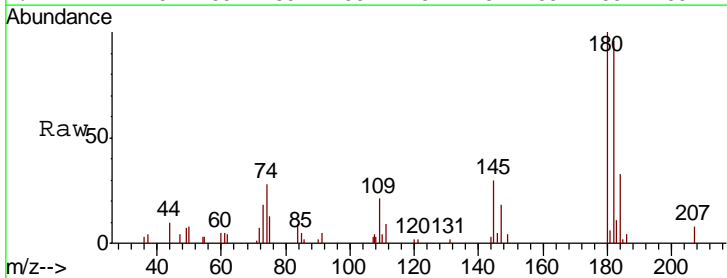


Abundance Ion 180.00 (179.70 to 180.70): V
 Ion 182.00 (181.70 to 182.70): V
 Ion 184.00 (183.70 to 184.70): V
 Ion 145.00 (144.70 to 145.70): V

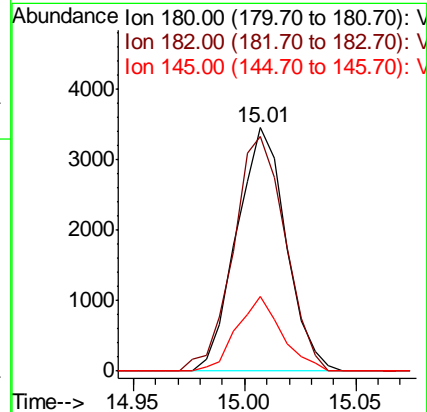
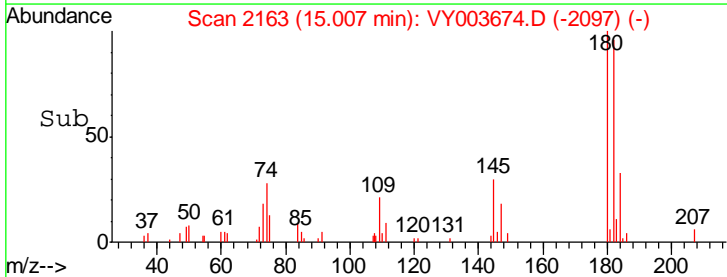


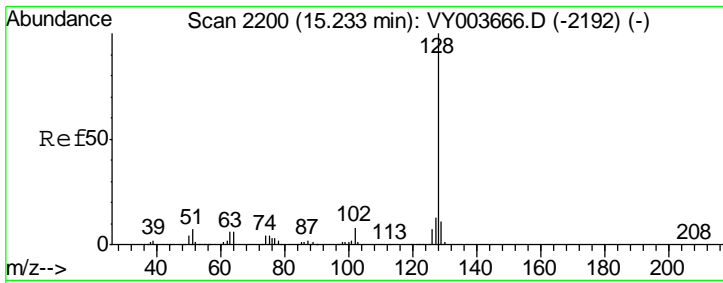
#70
 1,2,4-trichlorobenzene
 Concen: 1.277 ug/L
 RT: 15.01 min Scan# 2163
 Delta R.T. -0.00 min
 Lab File: VY003674.D
 Acq: 07 Dec 2020 16:46

Tgt Ion	Resp	Lower	Upper
180	100		
182	101.2	81.5	122.3
145	27.7	22.3	33.5



Abundance Ion 180.00 (179.70 to 180.70): V
 Ion 182.00 (181.70 to 182.70): V
 Ion 145.00 (144.70 to 145.70): V

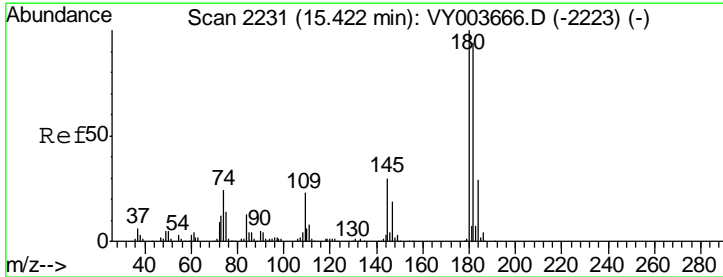
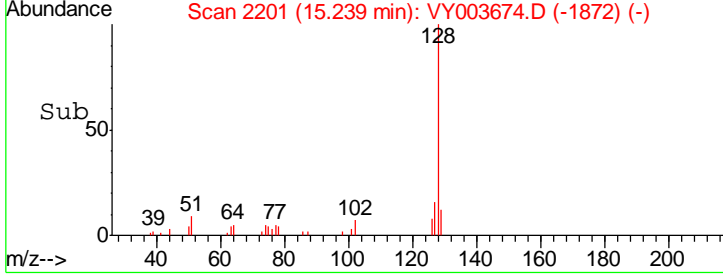
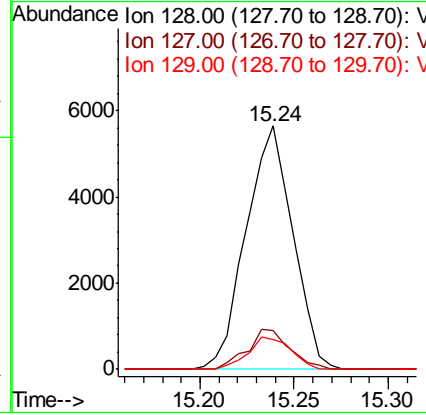
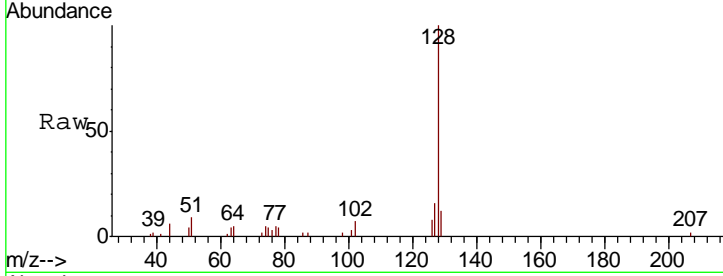




#71
 Naphthalene
 Concen: 1.097 ug/L
 RT: 15.24 min Scan# 2201
 Delta R.T. 0.01 min
 Lab File: VY003674.D
 Acq: 07 Dec 2020 16:46

Instrument : MSVOA_Y
 ClientSampled : MDL-SOIL-07

Tgt Ion	Resp	Lower	Upper
128	9736		
127	15.0	10.2	15.4
129	12.1	9.4	14.0



#72
 1,2,3-Trichlorobenzene
 Concen: 1.307 ug/L
 RT: 15.42 min Scan# 2231
 Delta R.T. -0.00 min
 Lab File: VY003674.D
 Acq: 07 Dec 2020 16:46

Tgt Ion	Resp	Lower	Upper
180	5014		
182	101.5	78.7	118.1
145	32.6	24.6	37.0

