

Data Path : Z:\VOASRV\HPCHEM1\MSVOA Y\DATA\VY120720\  
 Data File : VY003671.D  
 Acq On : 07 Dec 2020 14:27  
 Operator : SY/MD  
 Sample : VY1207SBL07  
 Misc : 5.00G/10ML/MSVOA Y/SOIL  
 ALS Vial : 11 Sample Multiplier: 1

**Instrument :**  
 MSVOA\_Y  
**Client Sampled :**  
 VBLK428

**Manual Integrations**  
**APPROVED**  
 MMDadoda  
 12/8/2020 5:06:29 PM

Quant Time: Dec 08 00:57:13 2020  
 Quant Method : Z:\VOASRV\HPCHEM1\MSVOA\_Y\METHODS\SFAMYL120720SMA.M  
 Quant Title : VOC Analysis  
 QLast Update : Tue Dec 08 00:43:44 2020  
 Response via : Initial Calibration

Internal Standards	R.T.	QIon	Response	Conc	Units	Dev(Min)
1) 1,4-Difluorobenzene	8.70	114	268469	25.00	ug/L	0.00
28) Chlorobenzene-d5	11.49	117	251712	25.00	ug/L	0.00
58) 1,4-Dichlorobenzene-d4	13.43	152	126131	25.00	ug/L	0.00

System Monitoring Compounds

4) Vinyl Chloride-d3	2.25	65	58049	20.76	ug/L	0.00
Spiked Amount	25.000	Range	30 - 150	Recovery	=	83.04%
7) Chloroethane-d5	2.77	69	52043	23.20	ug/L	0.00
Spiked Amount	25.000	Range	30 - 150	Recovery	=	92.80%
11) 1,1-Dichloroethene-d2	3.86	63	101942	17.34	ug/L	0.00
Spiked Amount	25.000	Range	45 - 110	Recovery	=	69.36%
21) 2-Butanone-d5	6.90	46	68741	50.68	ug/L	0.00
Spiked Amount	50.000	Range	20 - 135	Recovery	=	101.36%
24) Chloroform-d	7.49	84	143354	23.98	ug/L	0.00
Spiked Amount	25.000	Range	40 - 150	Recovery	=	95.92%
26) 1,2-Dichloroethane-d4	8.15	65	81123	24.53	ug/L	0.00
Spiked Amount	25.000	Range	70 - 130	Recovery	=	98.12%
32) Benzene-d6	8.12	84	302649	24.28	ug/L	0.00
Spiked Amount	25.000	Range	20 - 135	Recovery	=	97.12%
36) 1,2-Dichloropropane-d6	9.13	67	94351	24.90	ug/L	0.00
Spiked Amount	25.000	Range	70 - 120	Recovery	=	99.60%
41) Toluene-d8	10.18	98	273937	24.43	ug/L	0.00
Spiked Amount	25.000	Range	30 - 130	Recovery	=	97.72%
43) trans-1,3-Dichloropropene-	10.44	79	44242	24.36	ug/L	0.00
Spiked Amount	25.000	Range	30 - 135	Recovery	=	97.44%
47) 2-Hexanone-d5	10.79	63	54236	50.60	ug/L	0.00
Spiked Amount	50.000	Range	20 - 135	Recovery	=	101.20%
56) 1,1,2,2-Tetrachloroethane-	12.56	84	83959	24.00	ug/L	0.00
Spiked Amount	25.000	Range	45 - 120	Recovery	=	96.00%
66) 1,2-Dichlorobenzene-d4	13.72	152	104604	25.53	ug/L	0.00
Spiked Amount	25.000	Range	75 - 120	Recovery	=	102.12%

Target Compounds				Ovalue
16) Methylene chloride	4.72	84	8908m	1.898 ug/L

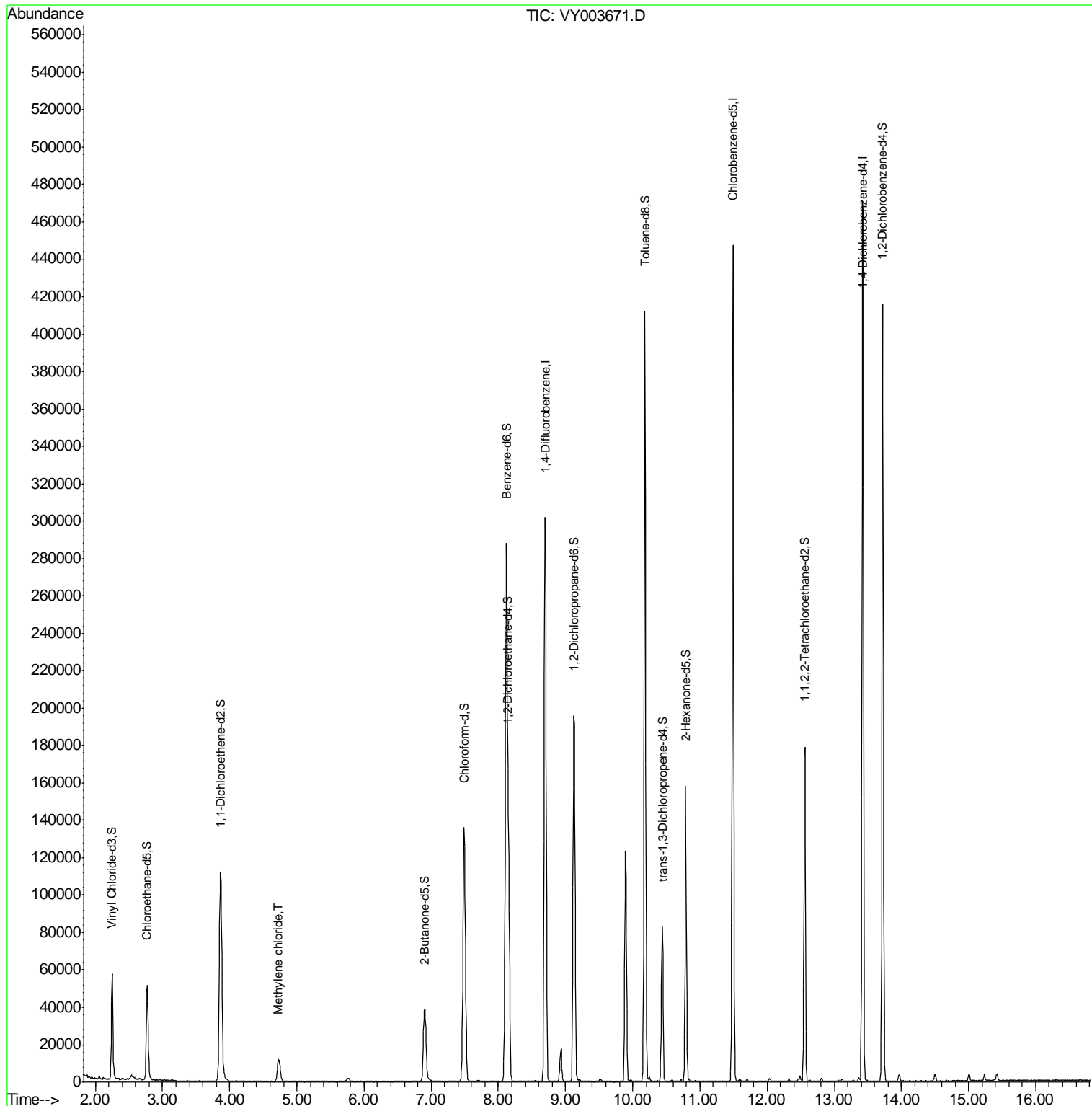
(#) = qualifier out of range (m) = manual integration (+) = signals summed

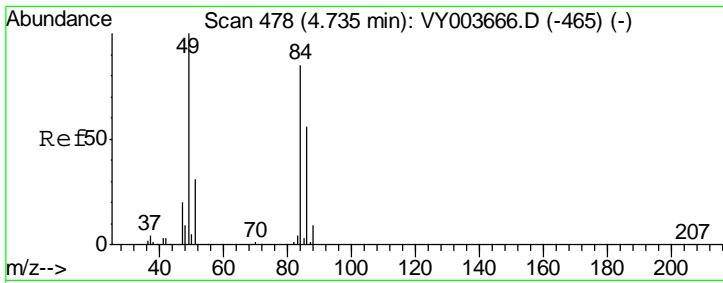
Data Path : Z:\VOASRV\HPCHEM1\MSVOA Y\DATA\VY120720\  
 Data File : VY003671.D  
 Acq On : 07 Dec 2020 14:27  
 Operator : SY/MD  
 Sample : VY1207SBL07  
 Misc : 5.00G/10ML/MSVOA Y/SOIL  
 ALS Vial : 11 Sample Multiplier: 1

**Instrument :**  
 MSVOA\_Y  
**Client Sampled :**  
 VBLK428

**Manual Integrations**  
**APPROVED**  
 MMDadoda  
 12/8/2020 5:06:29 PM

Quant Time: Dec 08 00:57:13 2020  
 Quant Method : Z:\VOASRV\HPCHEM1\MSVOA\_Y\METHODS\SFAMYL120720SMA.M  
 Quant Title : VOC Analysis  
 QLast Update : Tue Dec 08 00:43:44 2020  
 Response via : Initial Calibration





#16  
 Methylene chloride  
 Concen: 1.898 ug/L m  
 RT: 4.72 min Scan# 476  
 Delta R.T. -0.01 min  
 Lab File: VY003671.D  
 Acq: 07 Dec 2020 14:27

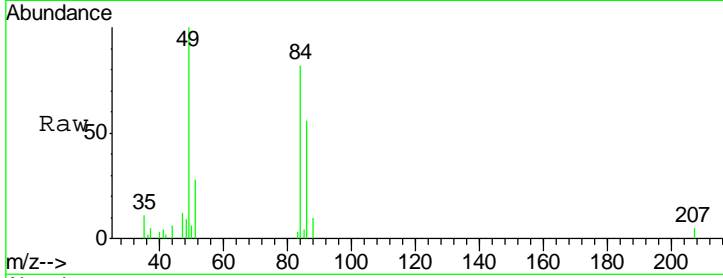
Instrument :  
 MSVOA\_Y  
 ClientSampled :  
 VBLK428

Tot Ion: 84 Resp: 8908

Ion	Ratio	Lower	Upper
84	100		
86	67.8	45.2	84.0
49	121.8	83.1	154.3

Manual Integrations  
 APPROVED

MMDadoda  
 12/8/2020 5:06:29 PM



Abundance

Ion 84.00 (83.70 to 84.70): VY0

Ion 86.00 (85.70 to 86.70): VY0

Ion 49.00 (48.70 to 49.70): VY0

