

Data Path : Z:\VOASRV\HPCHEM1\MSVOA Y\DATA\VY120720\
 Data File : VY003672.D
 Acq On : 07 Dec 2020 16:24
 Operator : SY/MD
 Sample : VY1207SBL08
 Misc : 5.00G/10ML/MSVOA Y/SOIL
 ALS Vial : 13 Sample Multiplier: 1

Instrument :
 MSVOA_Y
 ClientSampled :
 VBLK429

Integration Parameters: LSCINT.P

Integrator: RTE
 Smoothing : OFF
 Sampling : 1
 Start Thrs: 0.2
 Stop Thrs : 0

Filtering: 5
 Min Area: 0 % of largest Peak
 Max Peaks: 100
 Peak Location: TOP

If leading or trailing edge < 100 prefer < Baseline drop else tangent >
 Peak separation: 5

Method : Z:\VOASRV\HPCHEM1\MSVOA_Y\METHODS\SFAMYL120720SMA.M
 Title : VOC Analysis

Signal : TIC: VY003673.D

peak #	R.T. min	first scan	max scan	last scan	PK TY	peak height	corr. area	corr. % max.	% of total
1	2.253	65	71	81	rVB	55752	93201	6.17%	1.164%
2	2.772	150	156	174	rVB	49322	98445	6.51%	1.229%
3	2.967	186	188	190	rBV2	650	509	0.03%	0.006%
4	3.265	232	237	244	rVB4	1711	4236	0.28%	0.053%
5	3.765	317	319	321	rBV2	319	314	0.02%	0.004%
6	3.863	325	335	348	rBV	108863	293407	19.41%	3.664%
7	4.174	383	386	387	rBV2	335	314	0.02%	0.004%
8	4.204	387	391	395	rBV5	1516	3031	0.20%	0.038%
9	4.308	406	408	413	rBV3	390	426	0.03%	0.005%
10	4.393	420	422	425	rBV2	261	265	0.02%	0.003%
11	4.424	425	427	430	rBV	240	223	0.01%	0.003%
12	4.479	434	436	437	rBV	451	388	0.03%	0.005%
13	4.564	447	450	452	rBV2	417	389	0.03%	0.005%
14	4.588	452	454	457	rVB2	311	293	0.02%	0.004%
15	4.735	467	478	491	rBV2	13634	44085	2.92%	0.551%
16	4.857	496	498	499	rBV	272	219	0.01%	0.003%
17	4.930	503	510	511	rBV4	1166	2320	0.15%	0.029%
18	5.100	535	538	539	rVB2	337	318	0.02%	0.004%
19	5.125	539	542	544	rBV2	236	319	0.02%	0.004%
20	5.143	544	545	550	rVV2	229	299	0.02%	0.004%
21	5.229	550	559	570	rVB7	2170	7326	0.48%	0.091%
22	5.448	594	595	598	rVB	379	261	0.02%	0.003%
23	5.478	598	600	601	rBV	370	314	0.02%	0.004%
24	5.552	610	612	614	rBV2	612	568	0.04%	0.007%
25	5.613	620	622	626	rVV2	414	320	0.02%	0.004%
26	5.759	639	646	647	rBV4	2784	4904	0.32%	0.061%
27	6.003	684	686	687	rBV	594	565	0.04%	0.007%
28	6.021	687	689	692	rVV2	436	515	0.03%	0.006%
29	6.131	705	707	711	rVB2	366	431	0.03%	0.005%
30	6.173	711	714	718	rBV2	312	537	0.04%	0.007%
31	6.320	736	738	743	rVB	384	515	0.03%	0.006%
32	6.533	771	773	776	rVB2	217	252	0.02%	0.003%
33	6.594	779	783	786	rBV2	309	415	0.03%	0.005%
34	6.734	803	806	807	rBV2	520	555	0.04%	0.007%

Data Path : Z:\VOASRV\HPCHEM1\MSVOA Y\DATA\VY120720\
 Data File : VY003672.D
 Acq On : 07 Dec 2020 16:24
 Operator : SY/MD
 Sample : VY1207SBL08
 Misc : 5.00G/10ML/MSVOA Y/SOIL
 ALS Vial : 13 Sample Multiplier: 1

Instrument :
 MSVOA_Y
 ClientSampleId :
 VBLK429

Integration Parameters: LSCINT.P

Integrator: RTE
 Smoothing : OFF Filtering: 5
 Sampling : 1 Min Area: 0 % of largest Peak
 Start Thrs: 0.2 Max Peaks: 100
 Stop Thrs : 0 Peak Location: TOP

If leading or trailing edge < 100 prefer < Baseline drop else tangent >
 Peak separation: 5

Method : Z:\VOASRV\HPCHEM1\MSVOA_Y\METHODS\SFAMYL120720SMA.M
 Title : VOC Analysis

35	6.801	813	817	820	rBV3	213	429	0.03%	0.005%
36	6.899	823	833	841	rBV2	39067	111799	7.40%	1.396%
37	6.996	842	849	864	rVB2	31479	100872	6.67%	1.260%
38	7.490	918	930	942	rBV	138875	341701	22.61%	4.267%
39	7.637	952	954	955	rBV	334	241	0.02%	0.003%
40	7.655	955	957	959	rBV2	329	343	0.02%	0.004%
41	7.795	973	980	987	rBV5	2703	6365	0.42%	0.079%
42	7.905	994	998	1000	rBV4	1258	1756	0.12%	0.022%
43	8.124	1023	1034	1049	rBV3	530786	1511455	100.00%	18.876%
44	8.405	1077	1080	1081	rBV	326	287	0.02%	0.004%
45	8.521	1095	1099	1100	rBV3	333	437	0.03%	0.005%
46	8.606	1109	1113	1114	rBV2	364	467	0.03%	0.006%
47	8.697	1119	1128	1141	rVV	293309	580791	38.43%	7.253%
48	8.813	1145	1147	1150	rBV3	353	520	0.03%	0.006%
49	8.929	1159	1166	1174	rVB4	18763	38367	2.54%	0.479%
50	9.124	1190	1198	1206	rBV	188125	382261	25.29%	4.774%
51	9.508	1255	1261	1267	rBV6	2588	5303	0.35%	0.066%
52	9.746	1294	1300	1308	rBV4	3279	6596	0.44%	0.082%
53	9.837	1311	1315	1317	rBV3	1828	2877	0.19%	0.036%
54	9.892	1318	1324	1335	rVB	114488	206813	13.68%	2.583%
55	9.978	1335	1338	1345	rVB5	900	1722	0.11%	0.022%
56	10.075	1349	1354	1358	rBV3	4331	7870	0.52%	0.098%
57	10.179	1364	1371	1379	rBV	397048	693847	45.91%	8.665%
58	10.246	1379	1382	1388	rVB	5346	8079	0.53%	0.101%
59	10.343	1395	1398	1401	rBV3	306	434	0.03%	0.005%
60	10.441	1407	1414	1422	rVB	81930	139553	9.23%	1.743%
61	10.581	1429	1437	1444	rBV	126903	223045	14.76%	2.786%
62	10.648	1444	1448	1453	rVB4	2373	3855	0.26%	0.048%
63	10.715	1455	1459	1464	rVB6	3956	7074	0.47%	0.088%
64	10.788	1464	1471	1485	rBV	160289	260297	17.22%	3.251%
65	10.953	1491	1498	1509	rBV	39391	87029	5.76%	1.087%
66	11.319	1552	1558	1567	rVB	67255	112092	7.42%	1.400%
67	11.490	1579	1586	1597	rBV	436280	714898	47.30%	8.928%
68	11.593	1598	1603	1610	rVB2	5256	8942	0.59%	0.112%
69	11.703	1616	1621	1627	rVB3	3778	6848	0.45%	0.086%
70	11.861	1645	1647	1648	rVB2	405	253	0.02%	0.003%
71	12.044	1670	1677	1682	rVB3	6328	13279	0.88%	0.166%

Data Path : Z:\VOASRV\HPCHEM1\MSVOA Y\DATA\VY120720\
 Data File : VY003672.D
 Acq On : 07 Dec 2020 16:24
 Operator : SY/MD
 Sample : VY1207SBL08
 Misc : 5.00G/10ML/MSVOA Y/SOIL
 ALS Vial : 13 Sample Multiplier: 1

Instrument :
 MSVOA_Y
 ClientSampleId :
 VBLK429

Integration Parameters: LSCINT.P

Integrator: RTE
 Smoothing : OFF
 Sampling : 1
 Start Thrs: 0.2
 Stop Thrs : 0

Filtering: 5
 Min Area: 0 % of largest Peak
 Max Peaks: 100
 Peak Location: TOP

If leading or trailing edge < 100 prefer < Baseline drop else tangent >
 Peak separation: 5

Method : Z:\VOASRV\HPCHEM1\MSVOA_Y\METHODS\SFAMYL120720SMA.M
 Title : VOC Analysis

72	12.203	1698	1703	1709	rBV4	1136	1897	0.13%	0.024%
73	12.288	1715	1717	1718	rBV2	277	238	0.02%	0.003%
74	12.331	1719	1724	1731	rVB	6098	9022	0.60%	0.113%
75	12.495	1744	1751	1756	rBV	77971	131219	8.68%	1.639%
76	12.563	1756	1762	1771	rVV	180554	282049	18.66%	3.522%
77	12.630	1771	1773	1778	rVB5	1766	2720	0.18%	0.034%
78	12.819	1798	1804	1814	rBV8	7143	19135	1.27%	0.239%
79	12.959	1823	1827	1833	rVB5	884	1571	0.10%	0.020%
80	13.008	1833	1835	1841	rBV3	367	697	0.05%	0.009%
81	13.123	1849	1854	1859	rBV2	4591	7080	0.47%	0.088%
82	13.184	1859	1864	1869	rVB2	9066	13367	0.88%	0.167%
83	13.264	1875	1877	1878	rBV	584	431	0.03%	0.005%
84	13.367	1889	1894	1897	rVV2	5646	9141	0.60%	0.114%
85	13.428	1897	1904	1911	rVB	451467	707065	46.78%	8.830%
86	13.636	1935	1938	1942	rBV4	1158	1718	0.11%	0.021%
87	13.721	1946	1952	1960	rVB	393685	612890	40.55%	7.654%
88	13.825	1967	1969	1971	rBV3	613	650	0.04%	0.008%
89	13.904	1979	1982	1986	rBV	645	775	0.05%	0.010%
90	13.965	1987	1992	1999	rVB2	13013	20983	1.39%	0.262%
91	14.209	2027	2032	2035	rBV5	1261	1671	0.11%	0.021%
92	14.349	2053	2055	2059	rVB4	959	1253	0.08%	0.016%
93	14.452	2071	2072	2073	rBV	486	272	0.02%	0.003%
94	14.501	2073	2080	2087	rVB4	6787	12468	0.82%	0.156%
95	14.556	2087	2089	2091	rBV2	411	287	0.02%	0.004%
96	15.007	2159	2163	2168	rBV3	4519	6894	0.46%	0.086%
97	15.129	2181	2183	2184	rBV2	578	388	0.03%	0.005%
98	15.233	2196	2200	2207	rVV2	3381	5306	0.35%	0.066%
99	15.318	2210	2214	2219	rVB3	4122	6345	0.42%	0.079%
100	16.556	2415	2417	2419	rBV2	509	334	0.02%	0.004%

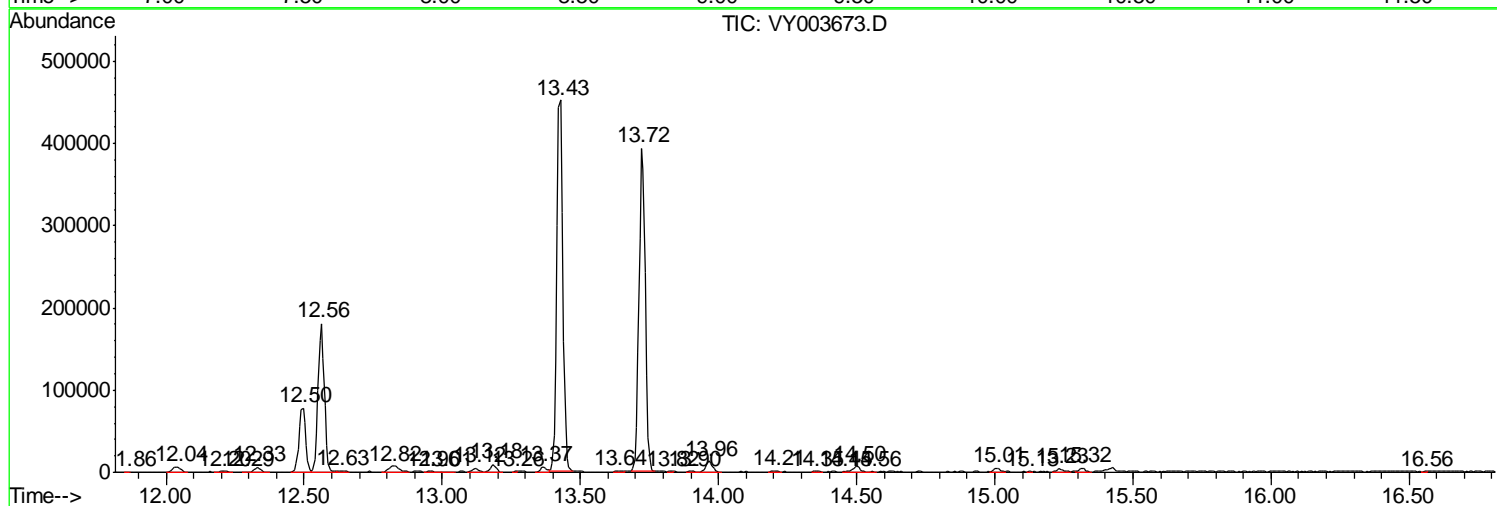
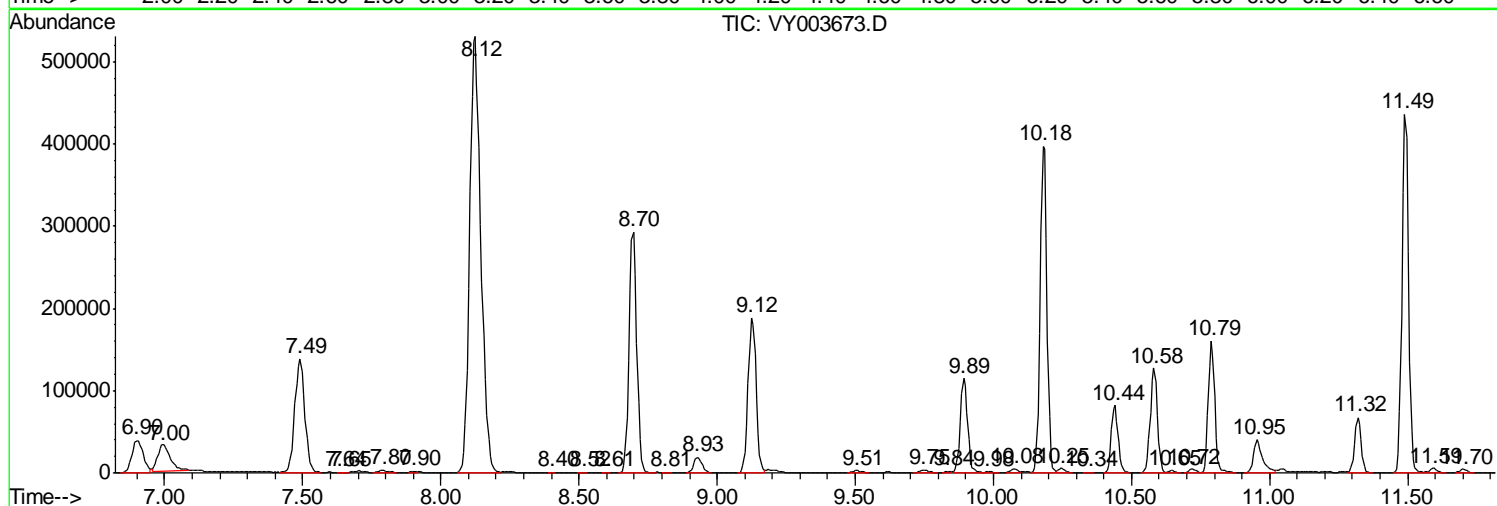
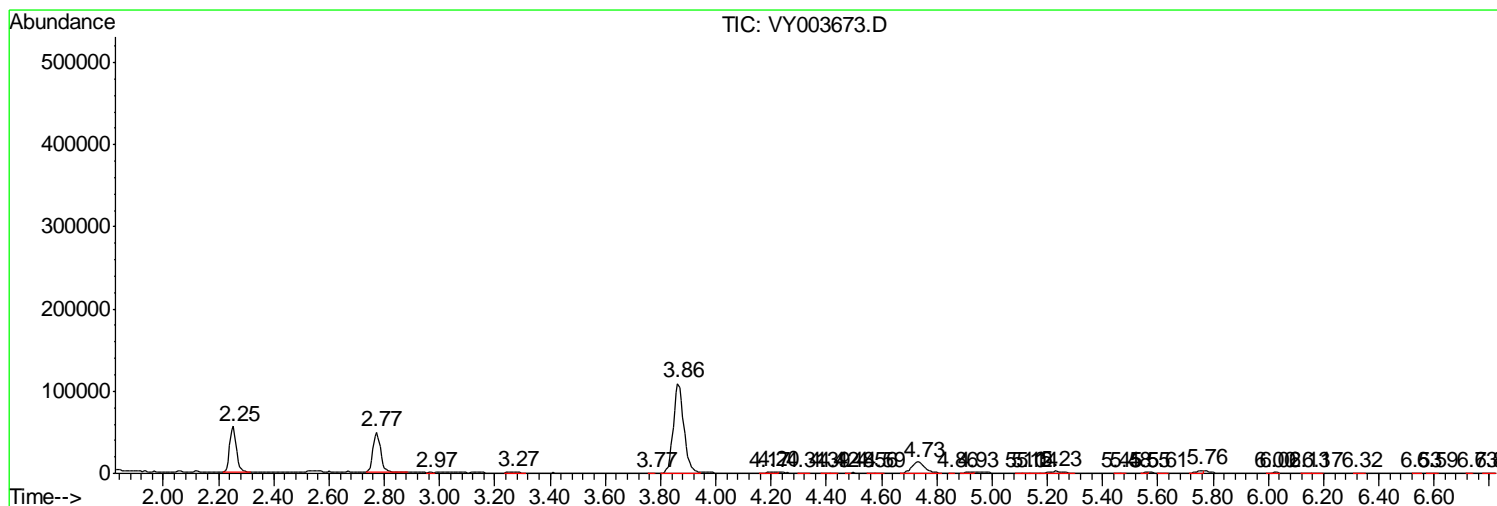
Sum of corrected areas: 8007142

Data Path : Z:\VOASRV\HPCHEM1\MSVOA Y\DATA\VY120720\
 Data File : VY003672.D
 Acq On : 07 Dec 2020 16:24
 Operator : SY/MD
 Sample : VY1207SBL08
 Misc : 5.00G/10ML/MSVOA Y/SOIL
 ALS Vial : 13 Sample Multiplier: 1

Instrument :
 MSVOA_Y
 ClientSampleId :
 VBLK429

Quant Method : Z:\VOASRV\HPCHEM1\MSVOA_Y\METHODS\SFAMYL120720SMA.M
 Quant Title : VOC Analysis

TIC Library : C:\DATABASE\NIST11.L
 TIC Integration Parameters: LSCINT.P



Data Path : Z:\VOASRV\HPCHEM1\MSVOA Y\DATA\VY120720\
 Data File : VY003672.D
 Acq On : 07 Dec 2020 16:24
 Operator : SY/MD
 Sample : VY1207SBL08
 Misc : 5.00G/10ML/MSVOA Y/SOIL
 ALS Vial : 13 Sample Multiplier: 1

Instrument :
 MSVOA_Y
 ClientSampleID :
 VBLK429

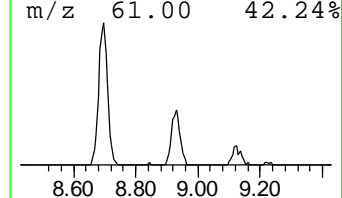
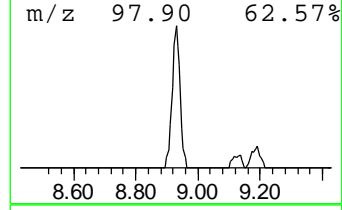
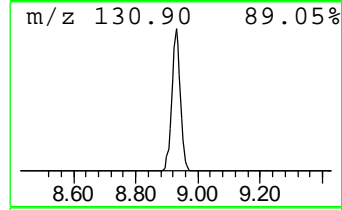
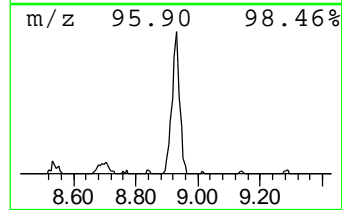
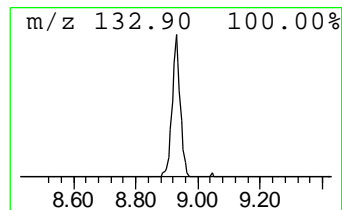
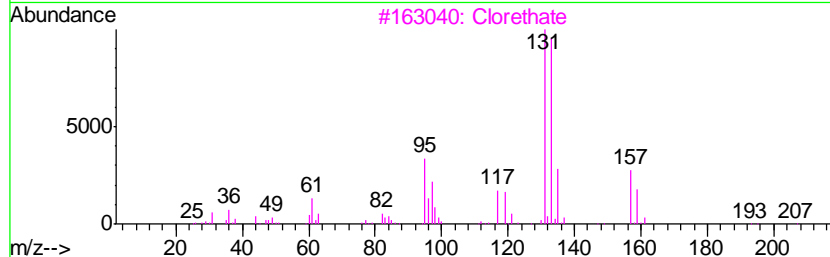
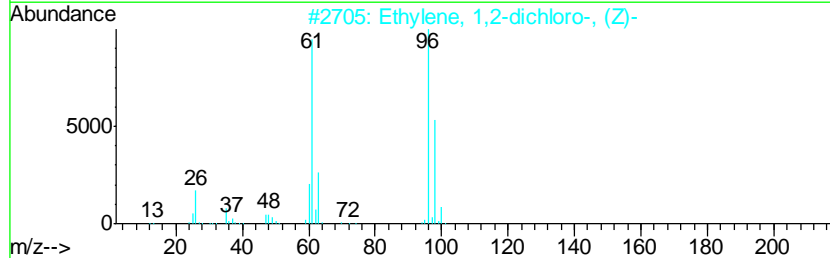
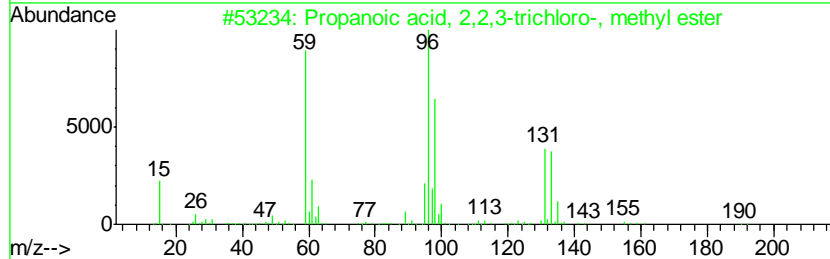
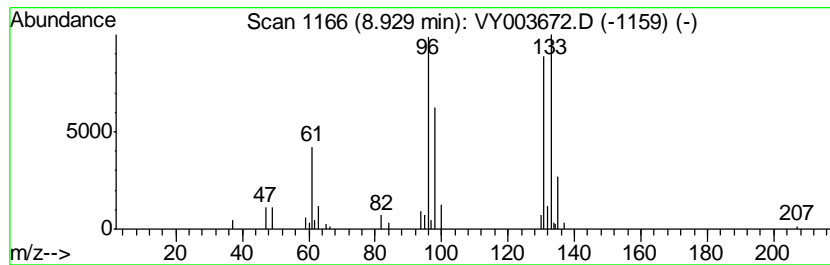
Quant Method : Z:\VOASRV\HPCHEM1\MSVOA_Y\METHODS\SFAMYLEM120720SMA.M
 Quant Title : VOC Analysis

TIC Library : C:\DATABASE\NIST11.L
 TIC Integration Parameters: LSCINT.P

 Peak Number 2 Propanoic acid, 2,2,3-trich... Concentration Rank 7

R.T.	EstConc	Area	Relative to ISTD	R.T.
8.93	1.65 ug/L	38367	1,4-Difluorobenzene	8.70

Hit#	of	Tentative ID	MW	MolForm	CAS#	Qual
1	5	Propanoic acid, 2,2,3-trichloro-...	190	C4H5Cl3O2	004749-35-3	50
2		Ethylene, 1,2-dichloro-, (Z)-	96	C2H2Cl2	000156-59-2	35
3		Clorethate	322	C5H4Cl6O3	005634-37-7	25
4		Ethane, 1,1,1,2-tetrachloro-	166	C2H2Cl4	000630-20-6	23
5		Ethane, 1,1,1,2-tetrachloro-	166	C2H2Cl4	000630-20-6	23



Data Path : Z:\VOASRV\HPCHEM1\MSVOA_Y\DATA\VY120720\
Data File : VY003672.D
Acq On : 07 Dec 2020 16:24
Operator : SY/MD
Sample : VY1207SBL08
Misc : 5.00G/10ML/MSVOA_Y/SOIL
ALS Vial : 13 Sample Multiplier: 1

Instrument :
MSVOA_Y
ClientSampleId :
VBLK429

Quant Method : Z:\VOASRV\HPCHEM1\MSVOA_Y\METHODS\SFAMYLM120720SMA.M
Quant Title : VOC Analysis

TIC Library : C:\DATABASE\NIST11.L
TIC Integration Parameters: LSCINT.P

TIC Top Hit name	RT	EstConc	Units	Response	--Internal Standard--			
					#	RT	Resp	Conc
Propanoic acid, 2...	8.93	1.6	ug/L	38367	1	8.70	580791	25.0