

Quantitation Report (QT Reviewed)

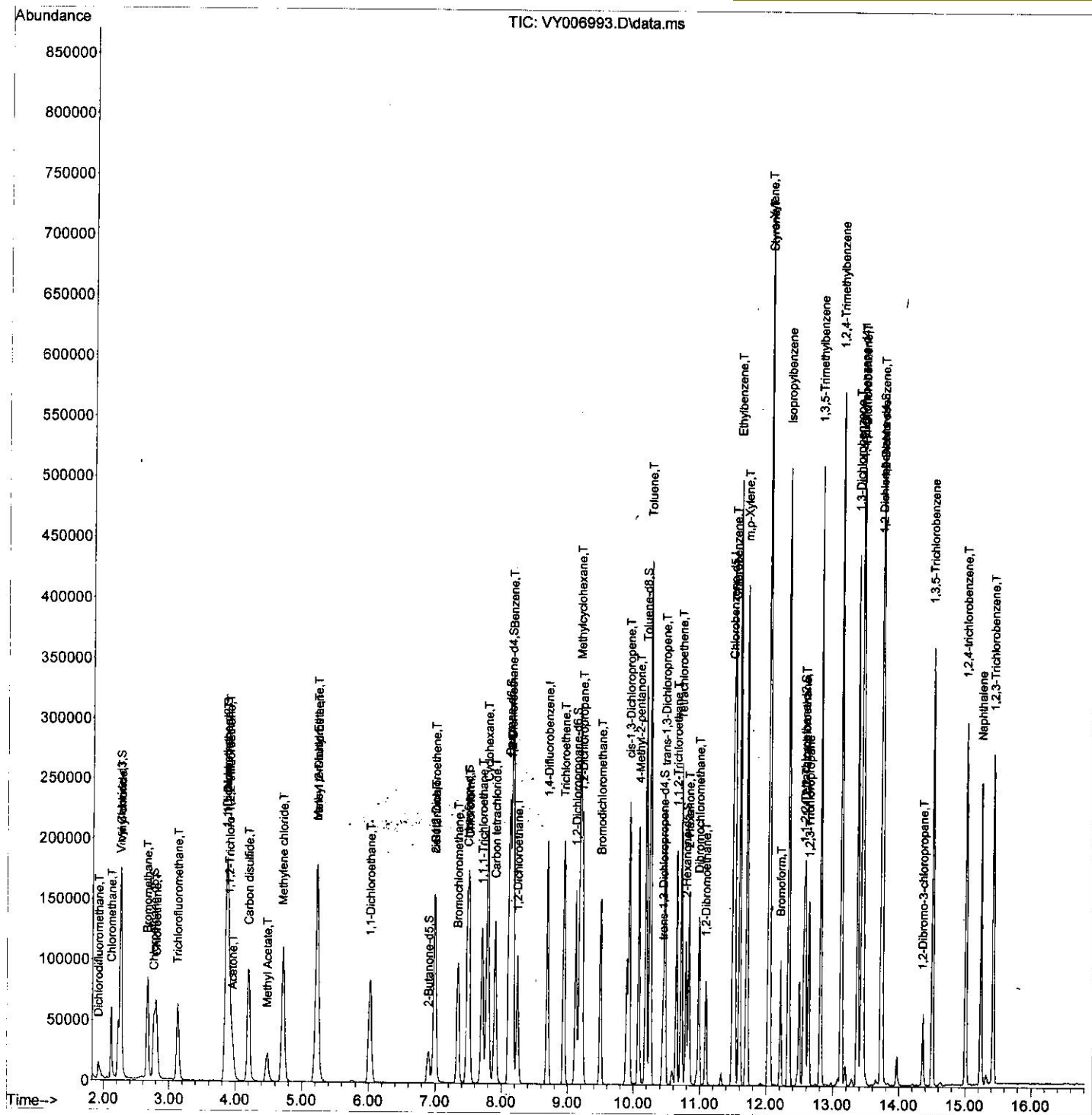
Data Path : Z:\voasrv\HPCHEM1\MSVOA_Y\Data\VY120721\
 Data File : VY006993.D
 Acq On : 07 Dec 2021 12:47
 Operator : SY/MD
 Sample : VSTD02508
 Misc : 5.00g/10.0mL/MSVOA_Y/SOIL
 ALS Vial : 5 Sample Multiplier: 1

Instrument :
 MSVOA_Y
 Client Sampled :
 VSTD025808

Quant Time: Dec 08 01:17:08 2021
 Quant Method : Z:\voasrv\HPCHEM1\MSVOA_Y\methods\SFAMYL120721SMA.M
 Quant Title : VOC Analysis
 QLast Update : Wed Dec 08 01:13:32 2021
 Response via : Initial Calibration

Manual Integrations APPROVED

Reviewed By : John Carlone 12/08/2021
 Supervised By : Mahesh Dadoda 12/15/2021



Quantitation Report (Qedit)

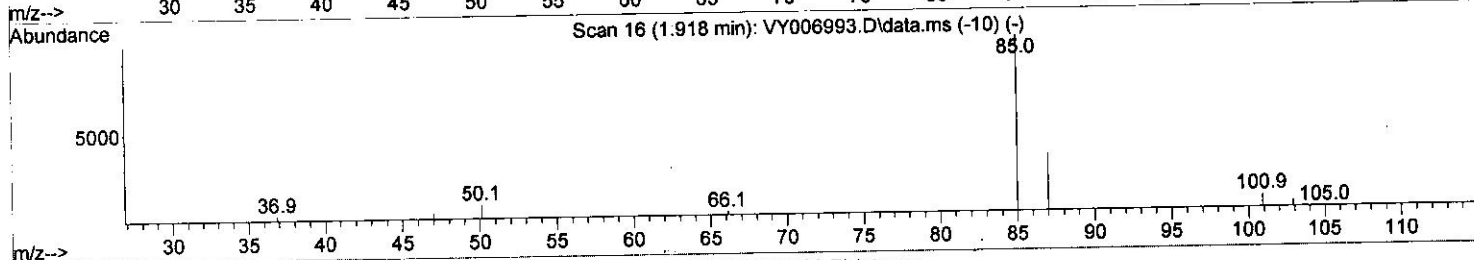
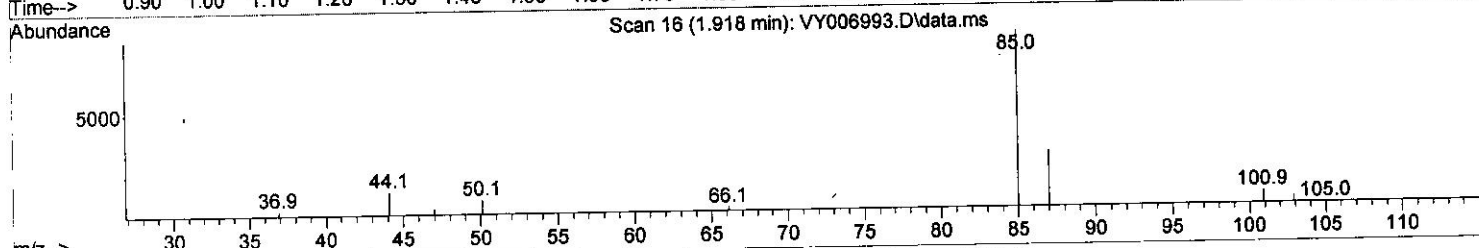
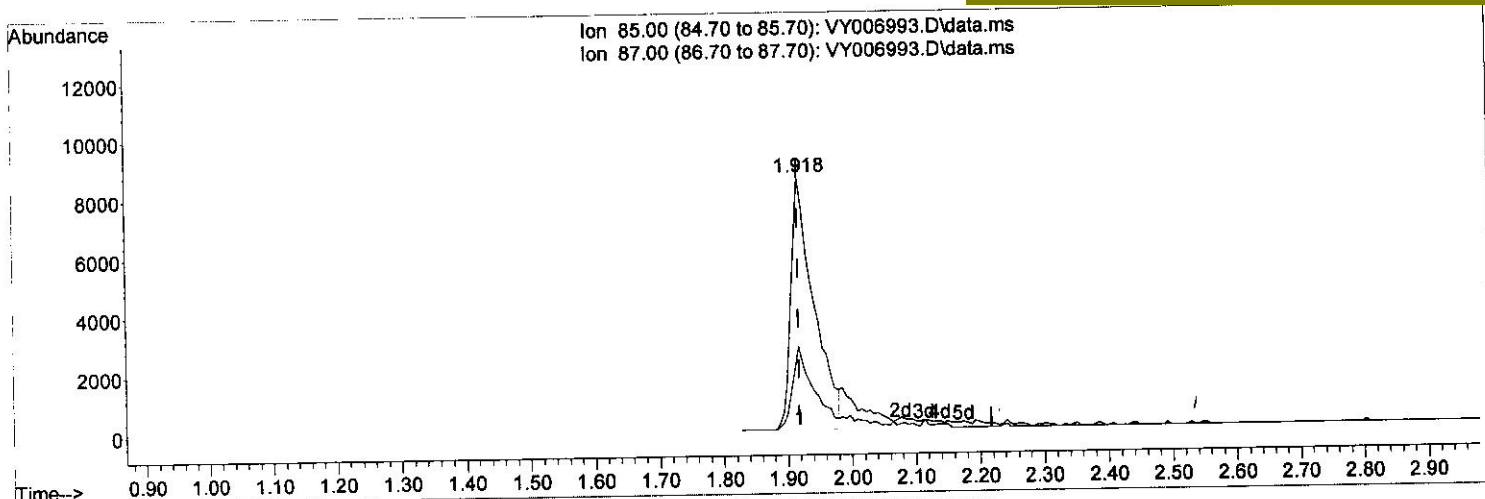
Data Path : Z:\voasrv\HPCHEM1\MSVOA_Y\Data\VY120721\
 Data File : VY006993.D
 Acq On : 07 Dec 2021 12:47
 Operator : SY/MD
 Sample : VSTD02508
 Misc : 5.00g/10.0mL/MSVOA_Y/SOIL
 ALS Vial : 5 Sample Multiplier: 1

Instrument :
 MSVOA_Y
 Client Sampled :
 VSTD025808

Quant Time: Dec 08 01:17:08 2021
 Quant Method : Z:\voasrv\HPCHEM1\MSVOA_Y\methods\SFAMYLM120721SMA.M
 Quant Title : VOC Analysis
 QLast Update : Wed Dec 08 01:13:32 2021
 Response via : Initial Calibration

Manual Integrations APPROVED

Reviewed By : John Carlone 12/08/2021
 Supervised By : Mahesh Dadoda 12/15/2021



TIC: VY006993.D\data.ms

(2) Dichlorodifluoromethane (T)

1.918min (0.000) 21.21 ug/L

response	21192
Ion	Exp% Act%
85.00	100.00 100.00
87.00	26.50 30.59
0.00	0.00 0.00
0.00	0.00 0.00

Quantitation Report (Qedit)

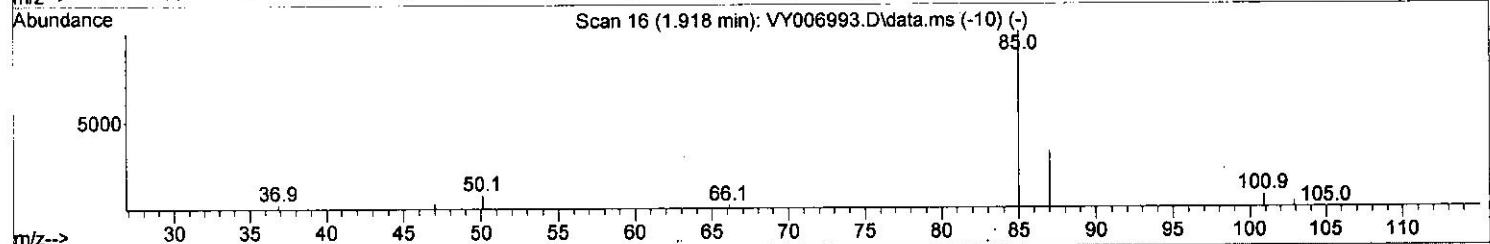
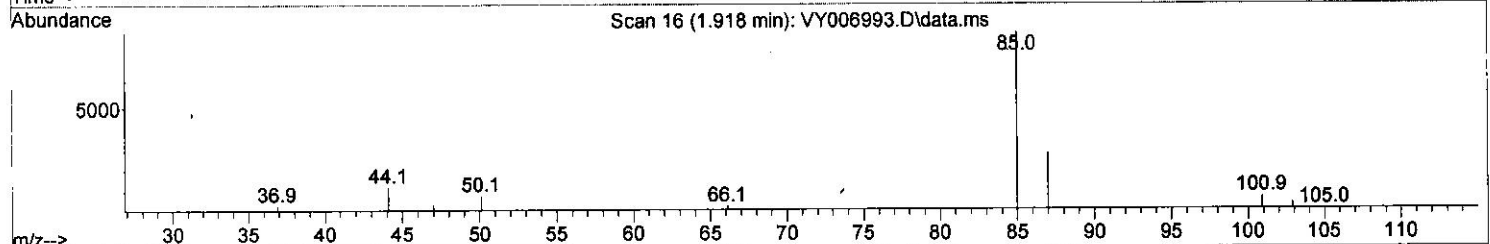
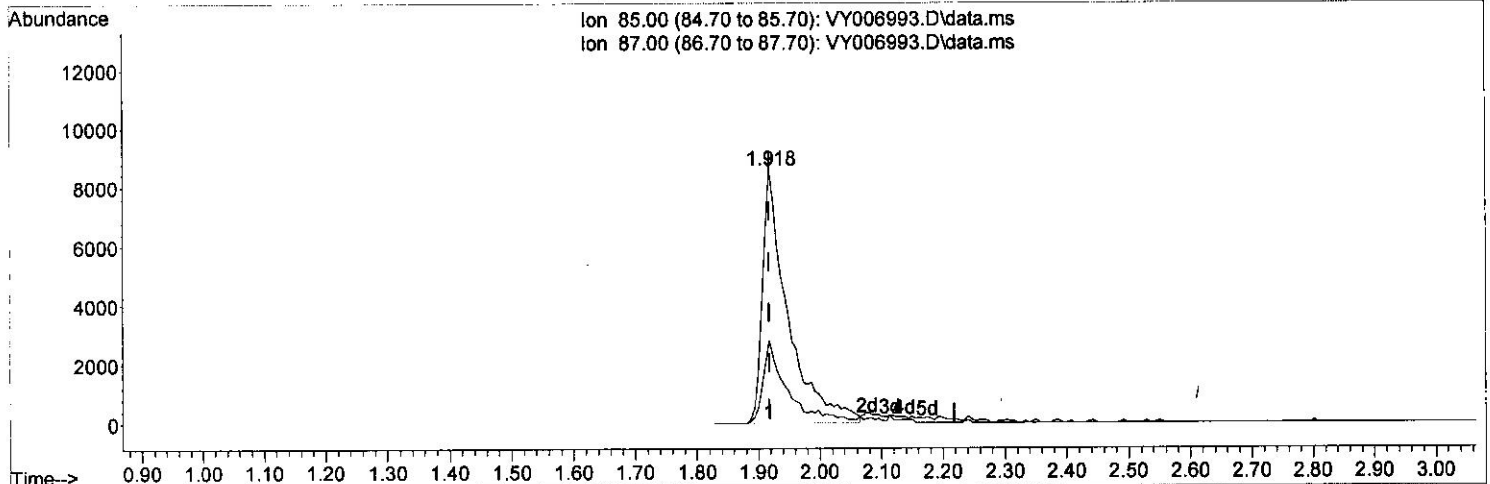
Data Path : Z:\voasrv\HPCHEM1\MSVOA_Y\Data\VY120721\
 Data File : VY006993.D
 Acq On : 07 Dec 2021 12:47
 Operator : SY/MD
 Sample : VSTD02508
 Misc : 5.00g/10.0mL/MSVOA_Y/SOIL
 ALS Vial : 5 Sample Multiplier: 1

Instrument :
 MSVOA_Y
 Client Sampled :
 VSTD025808

Quant Time: Dec 08 01:17:08 2021
 Quant Method : Z:\voasrv\HPCHEM1\MSVOA_Y\methods\SFAMYLEM120721SMA.M
 Quant Title : VOC Analysis
 QLast Update : Wed Dec 08 01:13:32 2021
 Response via : Initial Calibration

Manual Integrations APPROVED

Reviewed By : John Carlone 12/08/2021
 Supervised By : Mahesh Dadoda 12/15/2021



TIC: VY006993.D\data.ms

(2) Dichlorodifluoromethane (T)

1.918min (0.000) 24.53 ug/L m

3 mp
12/21/21

response	24510		
Ion	Exp%	Act%	
85.00	100.00	100.00	
87.00	26.50	26.45	
0.00	0.00	0.00	
0.00	0.00	0.00	

Quantitation Report (QT Reviewed)

Data Path : Z:\voasrv\HPCHEM1\MSVOA_Y\Data\VY120721\
 Data File : VY006993.D
 Acq On : 07 Dec 2021 12:47
 Operator : SY/MD
 Sample : VSTD02508
 Misc : 5.00g/10.0mL/MSVOA_Y/SOIL
 ALS Vial : 5 Sample Multiplier: 1

Instrument :
 MSVOA_Y
 Client Sampled :
 VSTD025808

Quant Time: Dec 08 01:17:08 2021
 Quant Method : Z:\voasrv\HPCHEM1\MSVOA_Y\methods\SFAMYL120721SMA.M
 Quant Title : VOC Analysis
 QLast Update : Wed Dec 08 01:13:32 2021
 Response via : Initial Calibration

Manual Integrations APPROVED

Reviewed By : John Carlone 12/08/2021
 Supervised By : Mahesh Dadoda 12/15/2021

Compound	R.T.	QIon	Response	Conc	Units	Dev(Min)
Internal Standards						
1) 1,4-Difluorobenzene	8.691	114	156183	25.000	ug/L	0.00
28) Chlorobenzene-d5	11.490	117	146372	25.000	ug/L	0.00
58) 1,4-Dichlorobenzene-d4	13.428	152	91721	25.000	ug/L	0.00
System Monitoring Compounds						
4) Vinyl Chloride-d3	2.247	65	90805	38.902	ug/L	0.00
7) Chloroethane-d5	2.766	69	66162	36.493	ug/L	0.00
11) 1,1-Dichloroethene-d2	3.857	63	130334	29.467	ug/L	0.00
21) 2-Butanone-d5	6.893	46	50449	59.184	ug/L	0.00
24) Chloroform-d	7.484	84	114969	28.020	ug/L	0.00
26) 1,2-Dichloroethane-d4	8.143	65	69075	27.983	ug/L	0.00
32) Benzene-d6	8.112	84	223975	27.581	ug/L	0.00
36) 1,2-Dichloropropane-d6	9.124	67	75846	28.991	ug/L	0.00
41) Toluene-d8	10.179	98	205733	27.231	ug/L	0.00
43) trans-1,3-Dichloroprop...	10.441	79	35841	28.733	ug/L	0.00
47) 2-Hexanone-d5	10.789	63	38594	61.875	ug/L	0.00
56) 1,1,2,2-Tetrachloroeth...	12.563	84	67181	30.336	ug/L	0.00
66) 1,2-Dichlorobenzene-d4	13.721	152	77005	25.192	ug/L	0.00
Target Compounds						
2) Dichlorodifluoromethane	1.918	85	24510m	24.529	ug/L	Qvalue
3) Chloromethane	2.113	50	59891	29.781	ug/L	100
5) Vinyl chloride	2.260	62	105534	34.481	ug/L	100
6) Bromomethane	2.662	94	62237	33.588	ug/L	100
8) Chloroethane	2.802	64	63397	34.490	ug/L	100
9) Trichlorofluoromethane	3.125	101	68739	31.931	ug/L	100
10) 1,1,2-Trichloro-1,2,2-...	3.900	101	57153	28.390	ug/L	100
12) 1,1-Dichloroethene	3.869	96	57662	26.890	ug/L	100
13) Acetone	3.954	43	43819	57.208	ug/L	100
14) Carbon disulfide	4.192	76	190269	26.919	ug/L	100
15) Methyl Acetate	4.485	43	48870	29.430	ug/L	100
16) Methylene chloride	4.710	84	72766	25.212	ug/L	100
17) trans-1,2-Dichloroethene	5.222	96	63024	27.376	ug/L	100
18) Methyl tert-butyl Ether	5.222	73	126293	29.802	ug/L	100
19) 1,1-Dichloroethane	6.021	63	128243	29.112	ug/L	100
20) cis-1,2-Dichloroethene	6.990	96	67122	27.268	ug/L	100
22) 2-Butanone	6.990	43	66054	61.208	ug/L	100
23) Bromochloromethane	7.332	128	30180	26.982	ug/L	100
25) Chloroform	7.509	83	122950	28.034	ug/L	100
27) 1,2-Dichloroethane	8.240	62	90963	28.566	ug/L	100
29) Cyclohexane	7.789	56	119951	28.494	ug/L	100
30) 1,1,1-Trichloroethane	7.704	97	102311	27.182	ug/L	100
31) Carbon tetrachloride	7.905	117	92794	26.175	ug/L	100
33) Benzene	8.161	78	278616	27.716	ug/L	100
34) Trichloroethene	8.941	95	66457	27.044	ug/L	100
35) Methylcyclohexane	9.185	83	117582	26.812	ug/L	100
37) 1,2-Dichloropropane	9.222	63	77892	29.493	ug/L	100
38) Bromodichloromethane	9.502	83	95702	28.462	ug/L	100
39) cis-1,3-Dichloropropene	9.929	75	116350	28.515	ug/L	100
40) 4-Methyl-2-pentanone	10.075	43	149249	63.007	ug/L	100
42) Toluene	10.246	91	297130	27.845	ug/L	100

MD
12/21/21

Quantitation Report (QT Reviewed)

Data Path : Z:\voasrv\HPCHEM1\MSVOA_Y\Data\VY120721\
 Data File : VY006993.D
 Acq On : 07 Dec 2021 12:47
 Operator : SY/MD
 Sample : VSTD02508
 Misc : 5.00g/10.0mL/MSVOA_Y/SOIL
 ALS Vial : 5 Sample Multiplier: 1

Instrument :
 MSVOA_Y
 Client Sampled :
 VSTD025808

Quant Time: Dec 08 01:17:08 2021
 Quant Method : Z:\voasrv\HPCHEM1\MSVOA_Y\methods\SFAMYL120721SMA.M
 Quant Title : VOC Analysis
 QLast Update : Wed Dec 08 01:13:32 2021
 Response via : Initial Calibration

Manual Integrations APPROVED

Reviewed By : John Carlone 12/08/2021
 Supervised By : Mahesh Dadoda 12/15/2021

Compound	R.T.	QIon	Response	Conc	Units	Dev(Min)
44) trans-1,3-Dichloropropene	10.465	75	110808	28.988	ug/L	100
45) 1,1,2-Trichloroethane	10.648	97	55426	28.790	ug/L	100
46) Tetrachloroethene	10.721	164	50537	25.223	ug/L	100
48) 2-Hexanone	10.831	43	105694	66.564	ug/L	100
49) Dibromochloromethane	10.984	129	63829	27.660	ug/L	100
50) 1,2-Dibromoethane	11.087	107	53023	29.031	ug/L	100
51) Chlorobenzene	11.520	112	174141	26.994	ug/L	100
52) Ethylbenzene	11.593	91	318380	27.835	ug/L	100
53) m,p-Xylene	11.703	106	118398	27.378	ug/L	100
54) o-Xylene	12.032	106	113453	27.881	ug/L	100
55) Styrene	12.044	104	201480	28.333	ug/L	100
57) 1,1,2,2-Tetrachloroethane	12.581	83	75206	31.563	ug/L	100
59) Bromoform	12.209	173	40866	22.601	ug/L	100
60) Isopropylbenzene	12.331	105	303064	23.278	ug/L	100
61) 1,2,3-Trichloropropane	12.636	75	57332	25.539	ug/L	100
62) 1,3,5-Trimethylbenzene	12.813	105	247461	23.165	ug/L	100
63) 1,2,4-Trimethylbenzene	13.124	105	285334	26.554	ug/L	100
64) 1,3-Dichlorobenzene	13.367	146	163542	26.864	ug/L	100
65) 1,4-Dichlorobenzene	13.447	146	164303	26.489	ug/L	100
67) 1,2-Dichlorobenzene	13.739	146	143614	26.455	ug/L	100
68) 1,2-Dibromo-3-chloropr...	14.355	75	13649	27.339	ug/L	100
69) 1,3,5-Trichlorobenzene	14.501	180	100884	24.839	ug/L	100
70) 1,2,4-trichlorobenzene	15.007	180	88389	26.448	ug/L	100
71) Naphthalene	15.239	128	191399	28.129	ug/L	100
72) 1,2,3-Trichlorobenzene	15.422	180	89672	30.426	ug/L	100

(#) = qualifier out of range (m) = manual integration (+) = signals summed