

Data Path : Z:\VOASRV\HPCHEM1\MSVOA Y\DATA\VY120919\
 Data File : VY000916.D
 Acq On : 09 Dec 2019 16:49
 Operator : SY/MD
 Sample : K6204-02
 Misc : 7.91G/5ML/MSVOA Y/SOIL
 ALS Vial : 12 Sample Multiplier: 1

Instrument :
 MSVOA_Y
 ClientSampleId :
 K072-AA-SB-2

Integration Parameters: RTEINT.P
 Integrator: RTE
 Smoothing : ON Filtering: 5
 Sampling : 1 Min Area: 3 % of largest Peak
 Start Thrs: 0.2 Max Peaks: 100
 Stop Thrs : 0 Peak Location: TOP

If leading or trailing edge < 100 prefer < Baseline drop else tangent >
 Peak separation: 5

Method : Z:\VOASRV\HPCHEM1\MSVOA_Y\METHODS\82Y112719S.M
 Title : SW846 8260

Signal : TIC

peak #	R.T. min	first scan	max scan	last scan	PK TY	peak height	corr. area	corr. % max.	% of total
1	1.859	18	20	28	rVB	9384	16151	1.08%	0.219%
2	4.718	480	489	503	rBV4	17197	53146	3.54%	0.719%
3	7.730	973	983	988	rBV	188980	455260	30.33%	6.163%
4	7.797	988	994	1005	rVB	344078	770603	51.34%	10.433%
5	8.150	1043	1052	1065	rBV	210691	449919	29.97%	6.091%
6	8.693	1131	1141	1151	rBV	542725	1094416	72.91%	14.816%
7	10.181	1377	1385	1393	rBV	880539	1501107	100.00%	20.322%
8	11.485	1591	1599	1608	rBV	754808	1226773	81.72%	16.608%
9	12.479	1754	1762	1770	rBV	532967	839715	55.94%	11.368%
10	13.418	1909	1916	1924	rBV	610084	964206	64.23%	13.054%
11	15.228	2207	2213	2219	rBV3	8170	15229	1.01%	0.206%

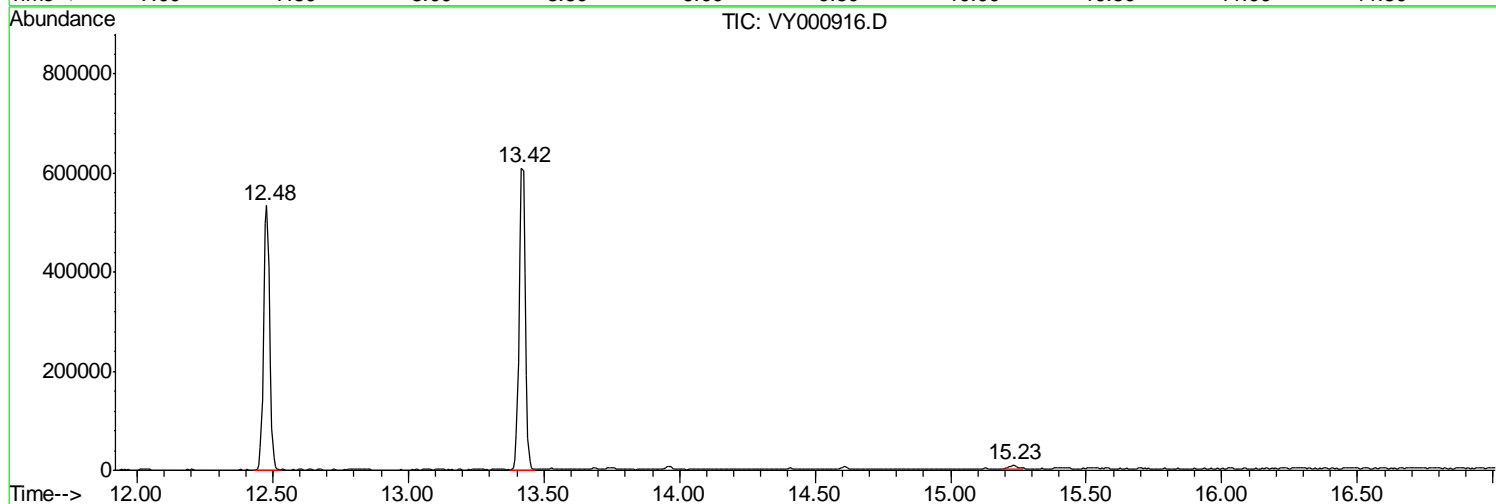
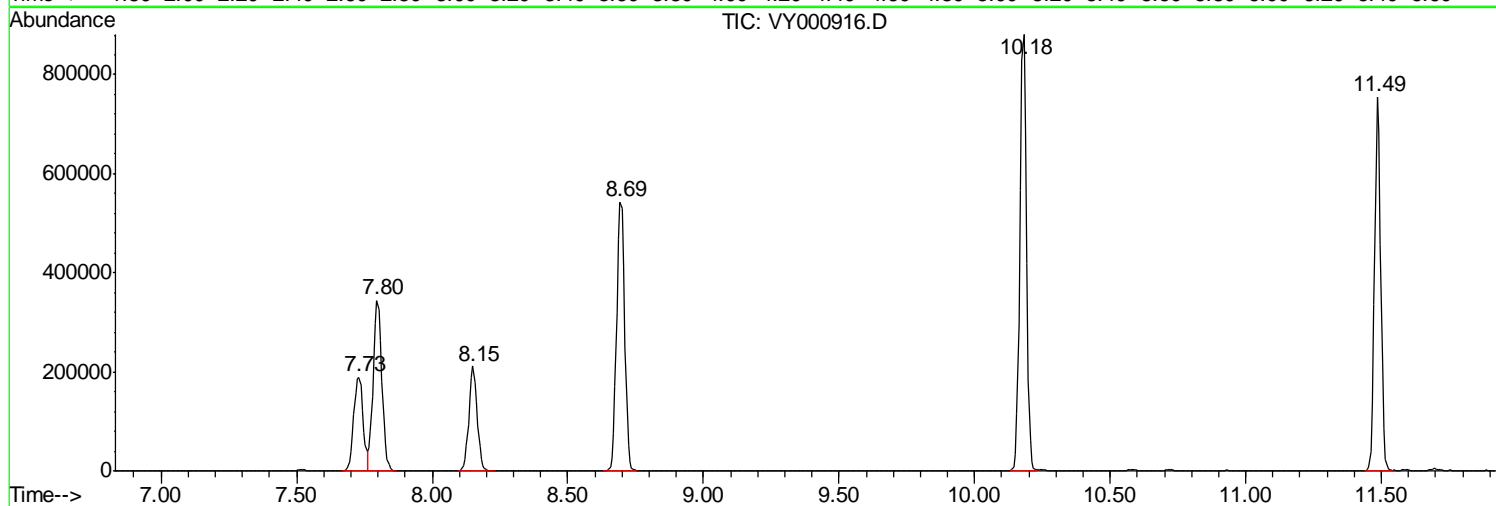
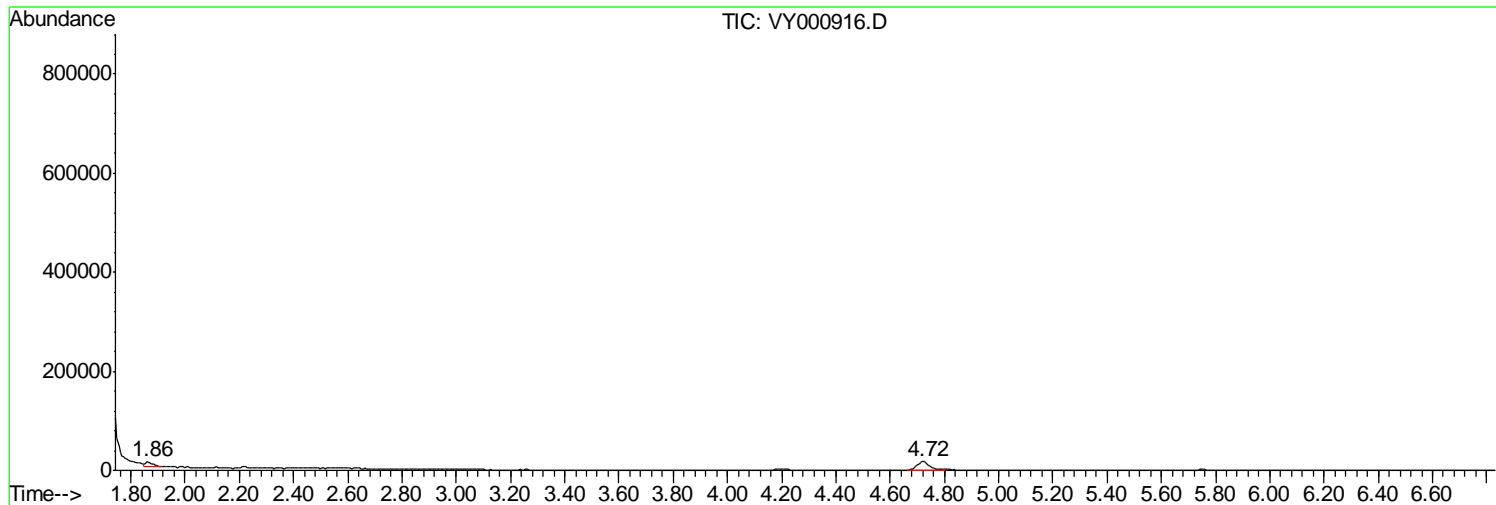
Sum of corrected areas: 7386525

Data Path : Z:\VOASRV\HPCHEM1\MSVOA Y\DATA\VY120919\
Data File : VY000916.D
Acq On : 09 Dec 2019 16:49
Operator : SY/MD
Sample : K6204-02
Misc : 7.91G/5ML/MSVOA Y/SOIL
ALS Vial : 12 Sample Multiplier: 1

Instrument :
MSVOA_Y
ClientSampleId :
K072-AA-SB-2

Quant Method : Z:\VOASRV\HPCHEM1\MSVOA_Y\METHODS\82Y112719S.M
Quant Title : SW846 8260

TIC Library : C:\DATABASE\NIST11.L
TIC Integration Parameters: LSCINT.P



Data Path : Z:\VOASRV\HPCHEM1\MSVOA_Y\DATA\VY120919\
Data File : VY000916.D
Acq On : 09 Dec 2019 16:49
Operator : SY/MD
Sample : K6204-02
Misc : 7.91G/5ML/MSVOA_Y/SOIL
ALS Vial : 12 Sample Multiplier: 1

Instrument :
MSVOA_Y
ClientSampleId :
K072-AA-SB-2

Quant Method : Z:\VOASRV\HPCHEM1\MSVOA_Y\METHODS\82Y112719S.M
Quant Title : SW846 8260

TIC Library : C:\DATABASE\NIST11.L
TIC Integration Parameters: LSCINT.P

No Library Search Compounds Detected

Data Path : Z:\VOASRV\HPCHEM1\MSVOA_Y\DATA\VY120919\
Data File : VY000916.D
Acq On : 09 Dec 2019 16:49
Operator : SY/MD
Sample : K6204-02
Misc : 7.91G/5ML/MSVOA_Y/SOIL
ALS Vial : 12 Sample Multiplier: 1

Instrument :
MSVOA_Y
ClientSampleId :
K072-AA-SB-2

Quant Method : Z:\VOASRV\HPCHEM1\MSVOA_Y\METHODS\82Y112719S.M
Quant Title : SW846 8260

TIC Library : C:\DATABASE\NIST11.L
TIC Integration Parameters: LSCINT.P

TIC Top Hit name	RT	EstConc	Units	Response	--Internal Standard--			
					#	RT	Resp	Conc
