

Data Path : Z:\voasrv\HPCHEM1\MSVOA\_Y\Data\VY121322\  
 Data File : VY011790.D  
 Acq On : 13 Dec 2022 13:55  
 Operator : KP/MD  
 Sample : N5964-09  
 Misc : 4.47g/5.0mL/MSVOA\_Y/SOIL  
 ALS Vial : 12 Sample Multiplier: 1

Instrument :  
 MSVOA\_Y  
 ClientSampleId :  
 SU-518-COMP-05

Quant Time: Dec 13 22:17:53 2022  
 Quant Method : Z:\voasrv\HPCHEM1\MSVOA\_Y\methods\82Y120922S.M  
 Quant Title : SW846 8260  
 QLast Update : Sat Dec 10 04:19:59 2022  
 Response via : Initial Calibration

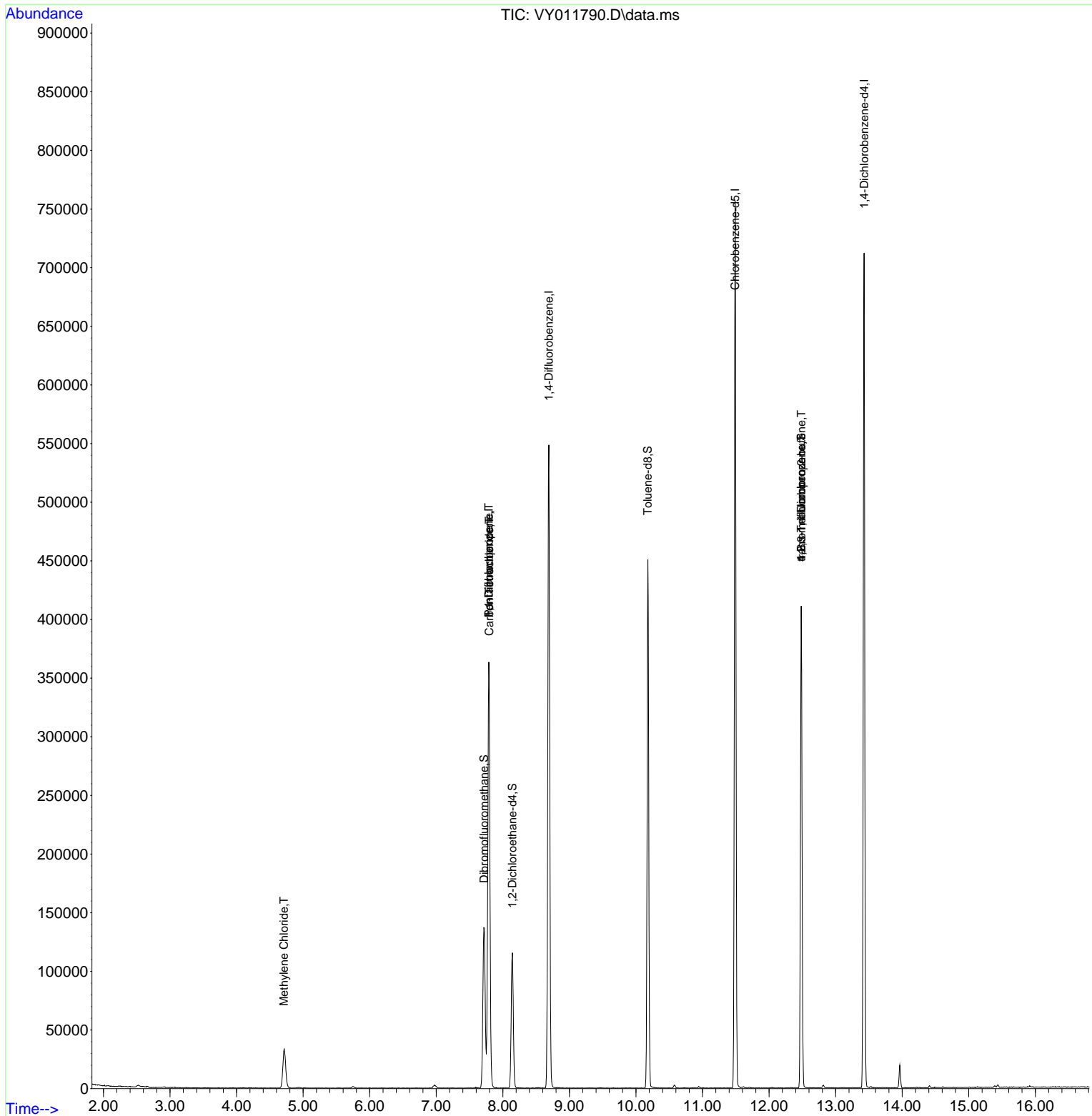
Compound	R.T.	QIon	Response	Conc	Units	Dev(Min)
-----						
Internal Standards						
1) Pentafluorobenzene	7.789	168	279316	50.000	ug/l	0.00
34) 1,4-Difluorobenzene	8.691	114	470244	50.000	ug/l	0.00
63) Chlorobenzene-d5	11.489	117	407335	50.000	ug/l	0.00
72) 1,4-Dichlorobenzene-d4	13.428	152	183083	50.000	ug/l	0.00
System Monitoring Compounds						
33) 1,2-Dichloroethane-d4	8.142	65	92690	48.485	ug/l	0.00
Spiked Amount	50.000	Range	50 - 163	Recovery	=	96.980%
35) Dibromofluoromethane	7.716	113	100125	47.748	ug/l	0.00
Spiked Amount	50.000	Range	54 - 147	Recovery	=	95.500%
50) Toluene-d8	10.179	98	296346	42.232	ug/l	0.00
Spiked Amount	50.000	Range	49 - 140	Recovery	=	84.460%
62) 4-Bromofluorobenzene	12.483	95	113729	40.882	ug/l	0.00
Spiked Amount	50.000	Range	25 - 144	Recovery	=	81.760%
Target Compounds						
						Qvalue
2) Dichlorodifluoromethane	1.906	85	59	Below Cal	#	41
3) Chloromethane	2.119	50	195	Below Cal	#	41
5) Bromomethane	2.662	94	203	Below Cal	#	65
11) Tert butyl alcohol	4.936	59	636	Below Cal	#	74
18) Methyl Acetate	4.728	43	44	Below Cal	#	50
20) Methylene Chloride	4.710	84	25176	3.851	ug/l	94
31) Cyclohexane	7.789	56	5579	Below Cal	#	1
36) 1,1-Dichloropropene	7.789	75	21038	5.896	ug/l	# 49
38) Carbon Tetrachloride	7.795	117	27756	6.622	ug/l	# 18
76) 1,2,3-Trichloropropane	12.483	75	60852	32.852	ug/l	# 100
81) trans-1,4-Dichloro-2-b...	12.483	75	60852	74.547	ug/l	# 13

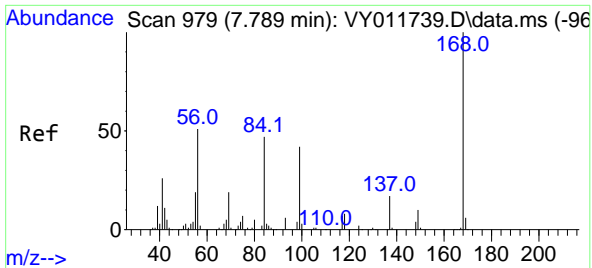
(#) = qualifier out of range (m) = manual integration (+) = signals summed

Data Path : Z:\voasrv\HPCHEM1\MSVOA\_Y\Data\VY121322\  
 Data File : VY011790.D  
 Acq On : 13 Dec 2022 13:55  
 Operator : KP/MD  
 Sample : N5964-09  
 Misc : 4.47g/5.0mL/MSVOA\_Y/SOIL  
 ALS Vial : 12 Sample Multiplier: 1

Instrument :  
 MSVOA\_Y  
 ClientSampleId :  
 SU-518-COMP-05

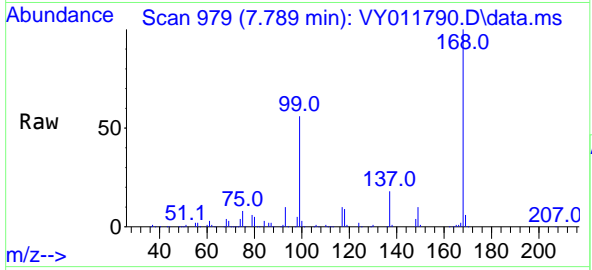
Quant Time: Dec 13 22:17:53 2022  
 Quant Method : Z:\voasrv\HPCHEM1\MSVOA\_Y\methods\82Y120922S.M  
 Quant Title : SW846 8260  
 QLast Update : Sat Dec 10 04:19:59 2022  
 Response via : Initial Calibration



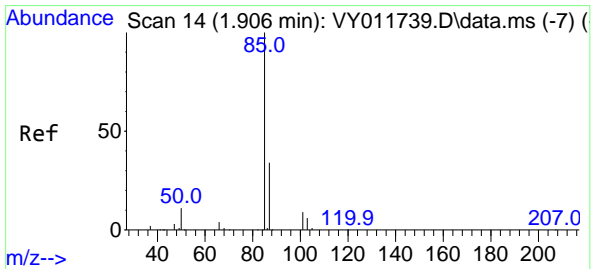
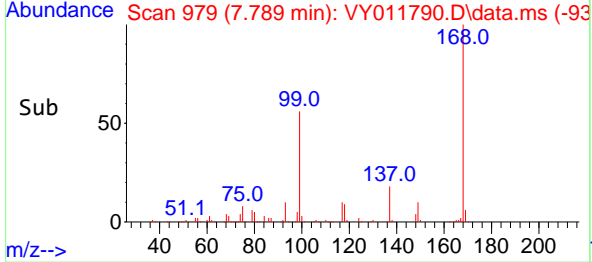
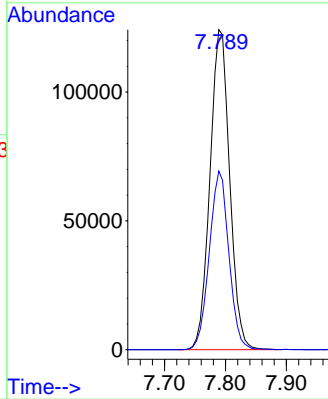


#1  
 Pentafluorobenzene  
 Concen: 50.000 ug/l  
 RT: 7.789 min Scan# 91  
 Delta R.T. -0.000 min  
 Lab File: VY011790.D  
 Acq: 13 Dec 2022 13:55

Instrument :  
 MSVOA\_Y  
 ClientSampleId :  
 SU-518-COMP-05

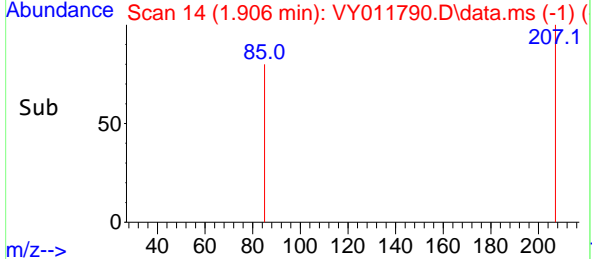
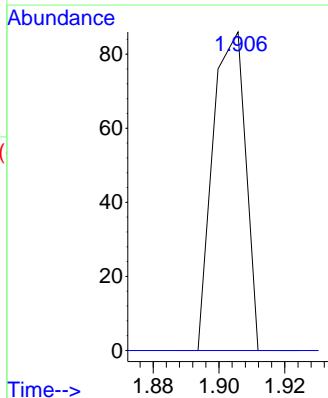
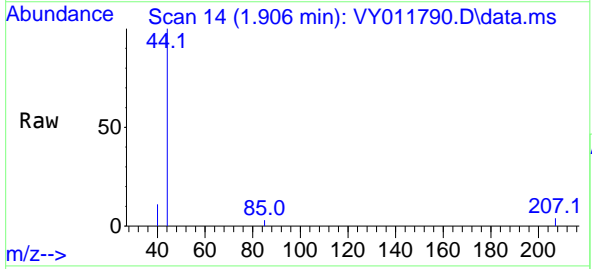


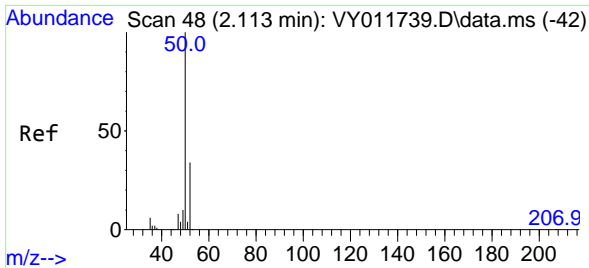
Tgt Ion:168 Resp: 279316  
 Ion Ratio Lower Upper  
 168 100  
 99 55.8 44.0 66.0



#2  
 Dichlorodifluoromethane  
 Concen: Below Cal  
 RT: 1.906 min Scan# 14  
 Delta R.T. -0.000 min  
 Lab File: VY011790.D  
 Acq: 13 Dec 2022 13:55

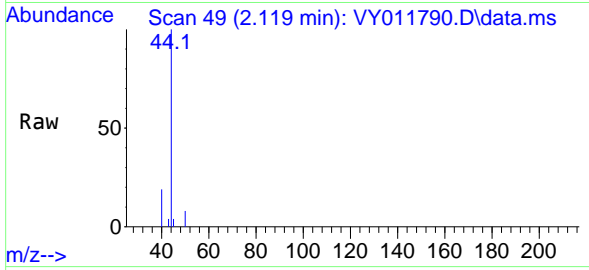
Tgt Ion: 85 Resp: 59  
 Ion Ratio Lower Upper  
 85 100  
 87 0.0 16.8 50.4#



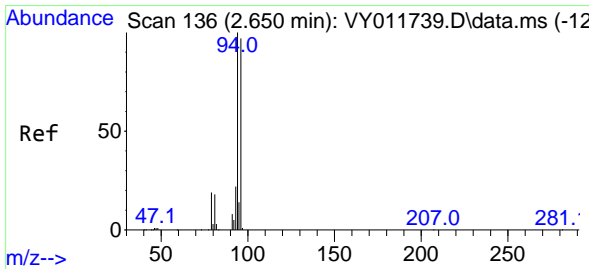
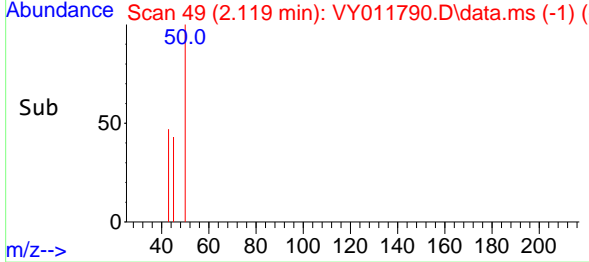
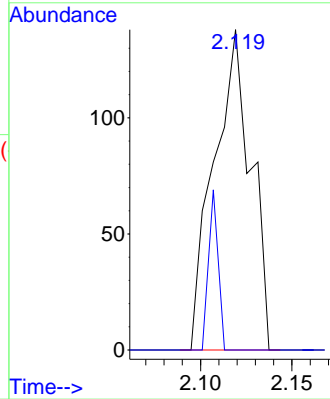


#3  
 Chloromethane  
 Concen: Below Cal  
 RT: 2.119 min Scan# 49  
 Delta R.T. 0.006 min  
 Lab File: VY011790.D  
 Acq: 13 Dec 2022 13:55

Instrument : MSVOA\_Y  
 ClientSampleId : SU-518-COMP-05

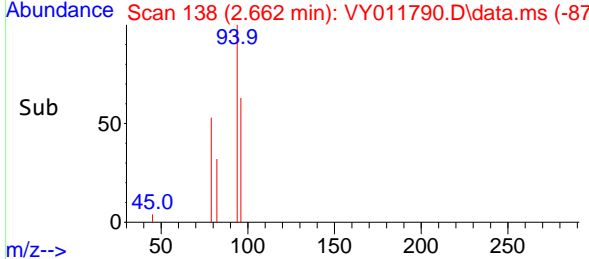
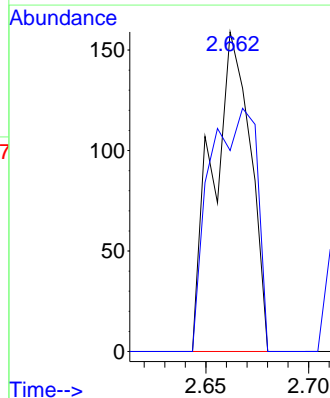
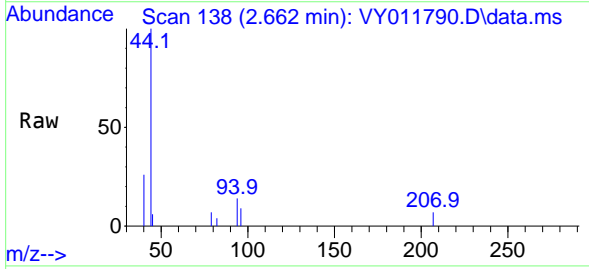


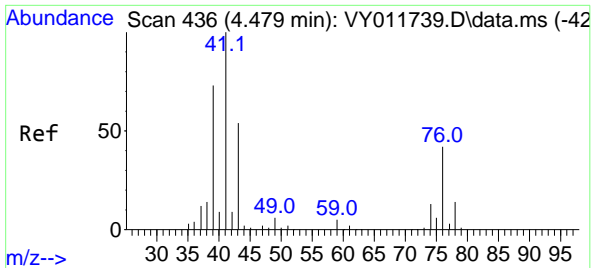
Tgt Ion: 50 Resp: 195  
 Ion Ratio Lower Upper  
 50 100  
 52 0.0 26.8 40.2#



#5  
 Bromomethane  
 Concen: Below Cal  
 RT: 2.662 min Scan# 138  
 Delta R.T. 0.012 min  
 Lab File: VY011790.D  
 Acq: 13 Dec 2022 13:55

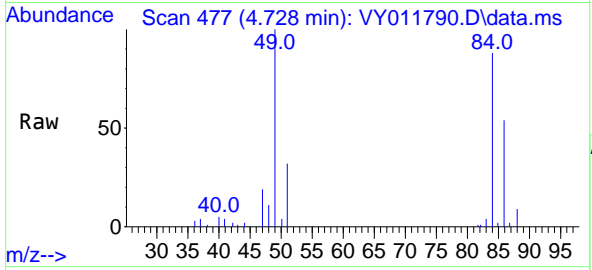
Tgt Ion: 94 Resp: 203  
 Ion Ratio Lower Upper  
 94 100  
 96 62.9 77.4 116.2#



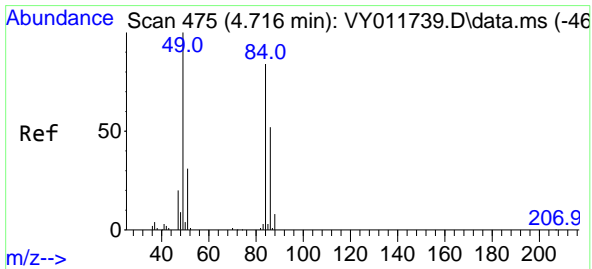
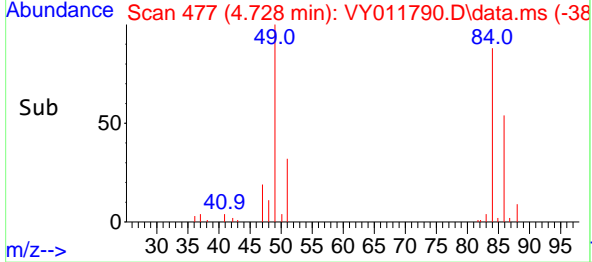
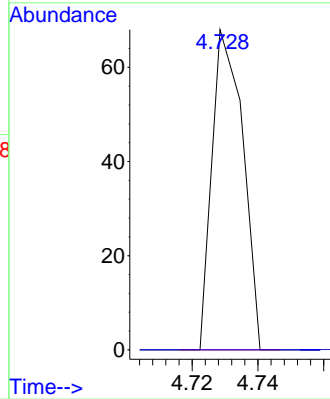


#18  
 Methyl Acetate  
 Concen: Below Cal  
 RT: 4.728 min Scan# 41  
 Delta R.T. 0.249 min  
 Lab File: VY011790.D  
 Acq: 13 Dec 2022 13:55

Instrument : MSVOA\_Y  
 ClientSampleId : SU-518-COMP-05

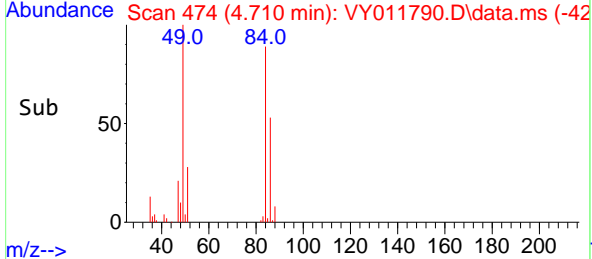
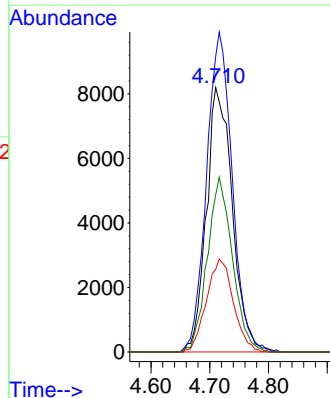
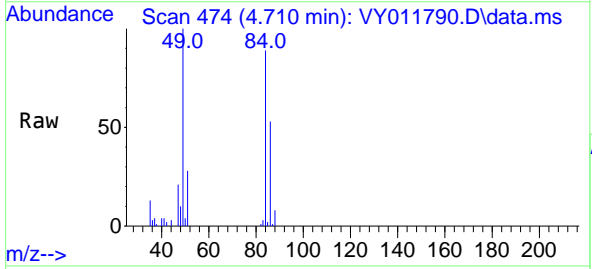


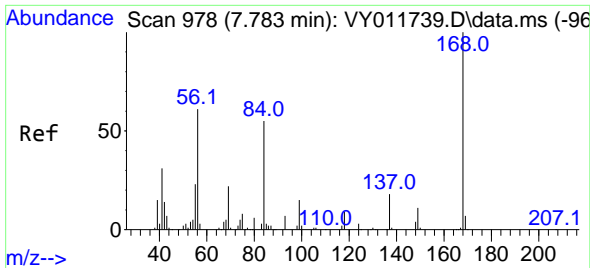
Tgt Ion: 43 Resp: 44  
 Ion Ratio Lower Upper  
 43 100  
 74 0.0 20.1 30.1#



#20  
 Methylene Chloride  
 Concen: 3.851 ug/l  
 RT: 4.710 min Scan# 474  
 Delta R.T. -0.006 min  
 Lab File: VY011790.D  
 Acq: 13 Dec 2022 13:55

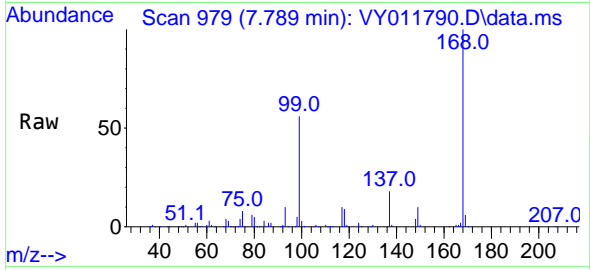
Tgt Ion: 84 Resp: 25176  
 Ion Ratio Lower Upper  
 84 100  
 49 111.9 95.4 143.2  
 51 31.3 29.9 44.9  
 86 59.5 49.6 74.4



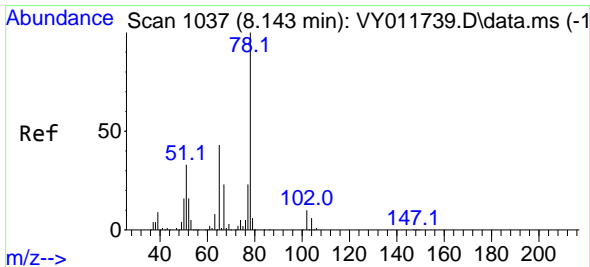
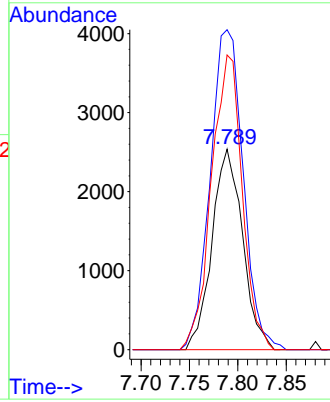
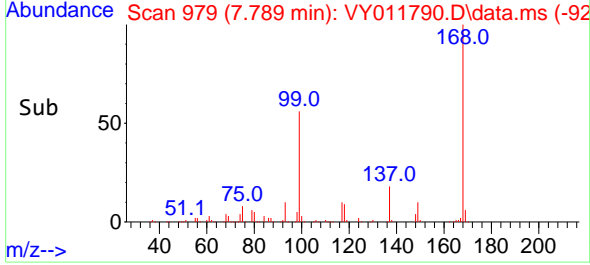


#31  
 Cyclohexane  
 Concen: Below Cal  
 RT: 7.789 min Scan# 91  
 Delta R.T. 0.006 min  
 Lab File: VY011790.D  
 Acq: 13 Dec 2022 13:55

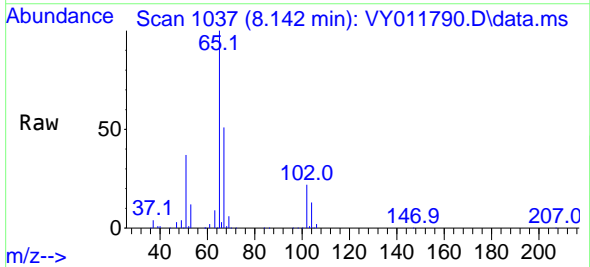
Instrument :  
 MSVOA\_Y  
 ClientSampleId :  
 SU-518-COMP-05



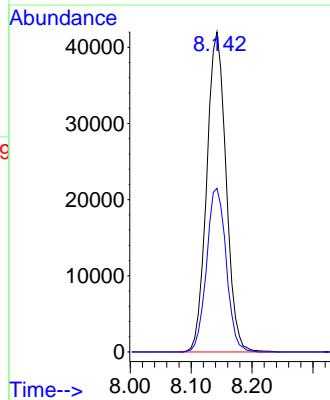
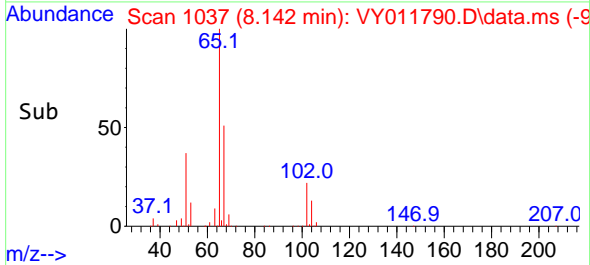
Tgt Ion: 56 Resp: 5579  
 Ion Ratio Lower Upper  
 56 100  
 69 159.6 29.2 43.8#  
 84 147.0 72.6 108.8#

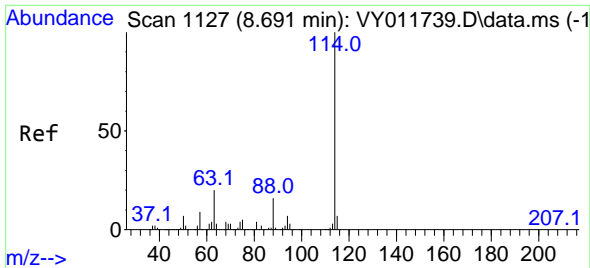


#33  
 1,2-Dichloroethane-d4  
 Concen: 48.485 ug/l  
 RT: 8.142 min Scan# 1037  
 Delta R.T. -0.001 min  
 Lab File: VY011790.D  
 Acq: 13 Dec 2022 13:55



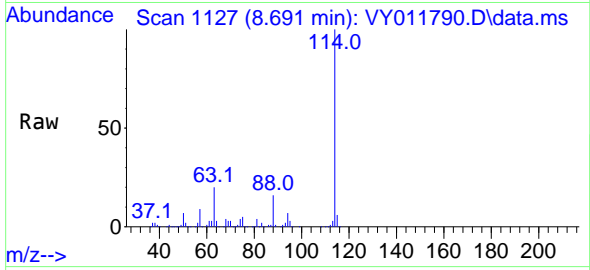
Tgt Ion: 65 Resp: 92690  
 Ion Ratio Lower Upper  
 65 100  
 67 51.9 0.0 103.2





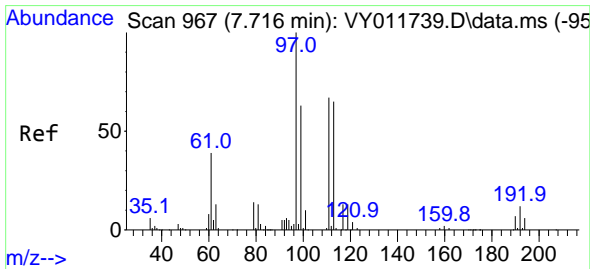
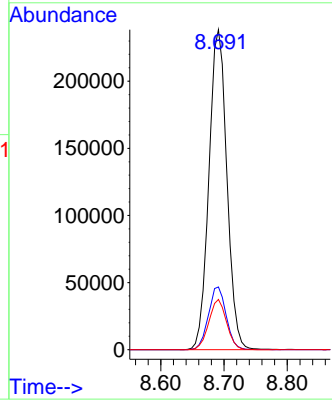
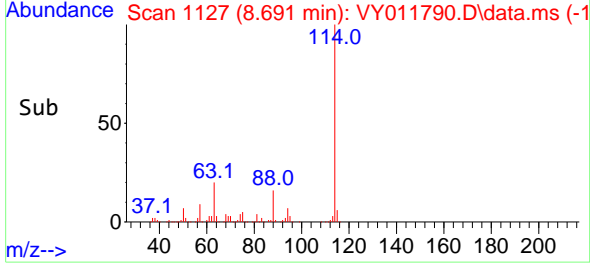
#34  
 1,4-Difluorobenzene  
 Concen: 50.000 ug/l  
 RT: 8.691 min Scan# 1127  
 Delta R.T. 0.000 min  
 Lab File: VY011790.D  
 Acq: 13 Dec 2022 13:55

Instrument : MSVOA\_Y  
 ClientSampleId : SU-518-COMP-05

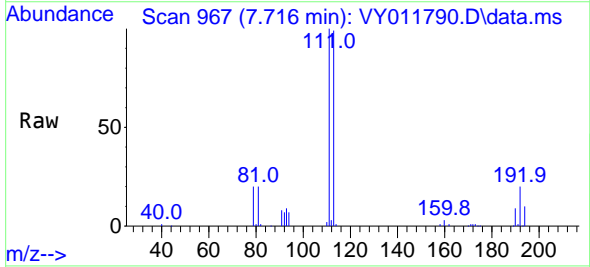


Tgt Ion:114 Resp: 470244

Ion	Ratio	Lower	Upper
114	100		
63	19.6	0.0	39.6
88	15.7	0.0	32.2

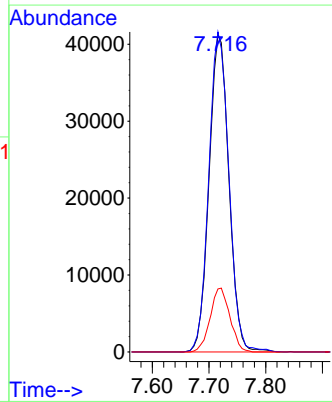
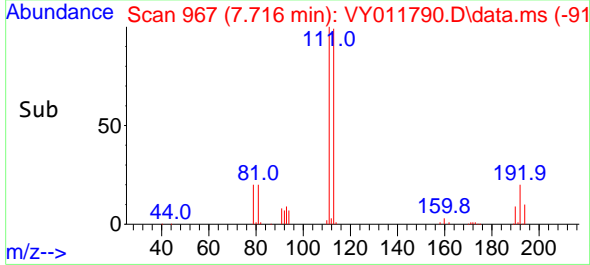


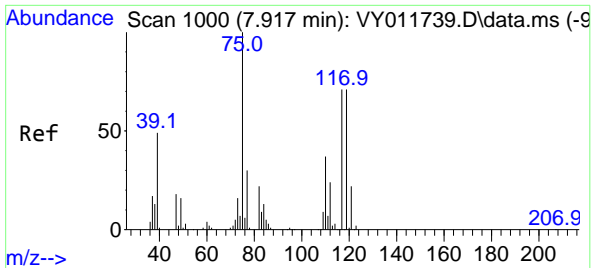
#35  
 Dibromofluoromethane  
 Concen: 47.748 ug/l  
 RT: 7.716 min Scan# 967  
 Delta R.T. -0.000 min  
 Lab File: VY011790.D  
 Acq: 13 Dec 2022 13:55



Tgt Ion:113 Resp: 100125

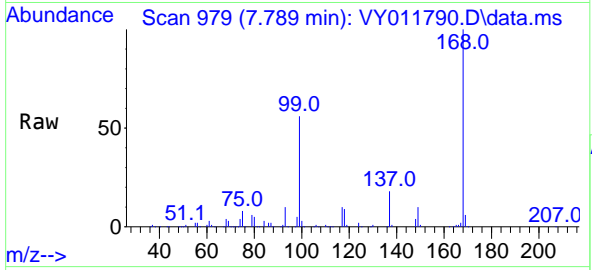
Ion	Ratio	Lower	Upper
113	100		
111	102.1	83.0	124.4
192	20.0	16.0	24.0





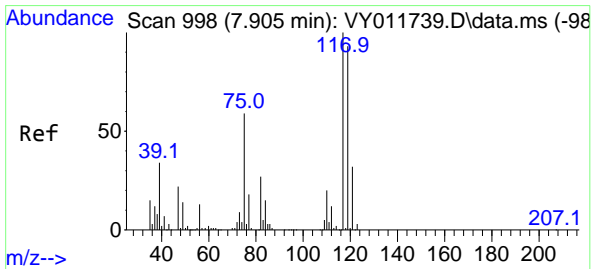
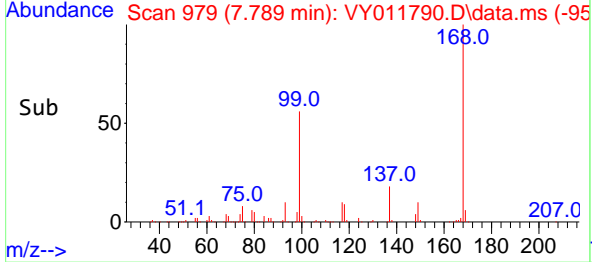
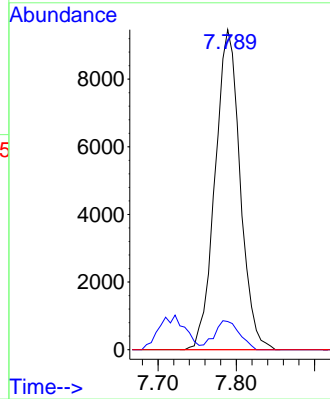
#36  
 1,1-Dichloropropene  
 Concen: 5.896 ug/l  
 RT: 7.789 min Scan# 91  
 Delta R.T. -0.128 min  
 Lab File: VY011790.D  
 Acq: 13 Dec 2022 13:55

Instrument :  
 MSVOA\_Y  
 ClientSampleId :  
 SU-518-COMP-05

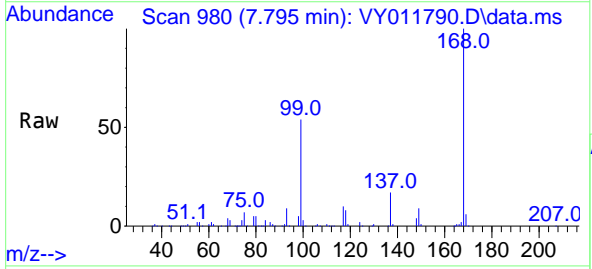


Tgt Ion: 75 Resp: 21038

Ion	Ratio	Lower	Upper
75	100		
110	9.1	18.1	54.1#
77	0.0	25.1	37.7#

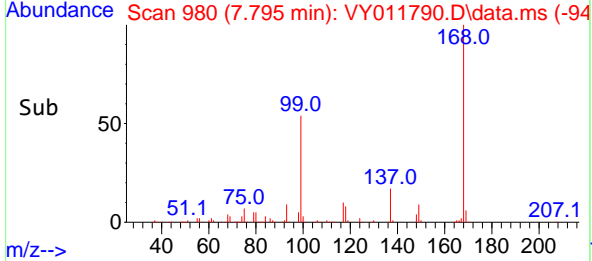
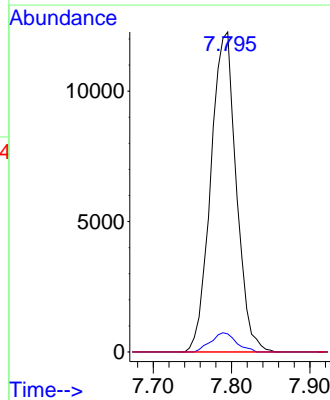


#38  
 Carbon Tetrachloride  
 Concen: 6.622 ug/l  
 RT: 7.795 min Scan# 980  
 Delta R.T. -0.110 min  
 Lab File: VY011790.D  
 Acq: 13 Dec 2022 13:55

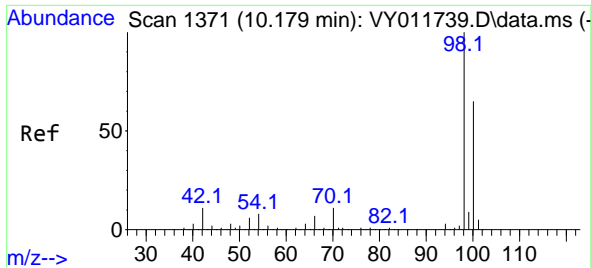


Tgt Ion: 117 Resp: 27756

Ion	Ratio	Lower	Upper
117	100		
119	5.7	73.8	110.8#
121	0.0	25.2	37.8#



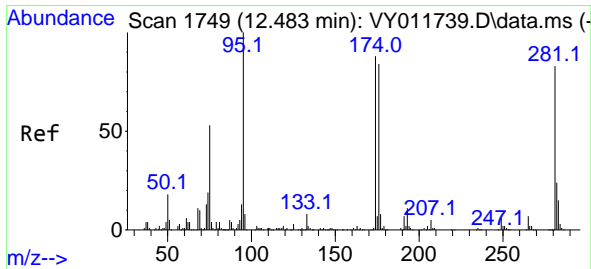
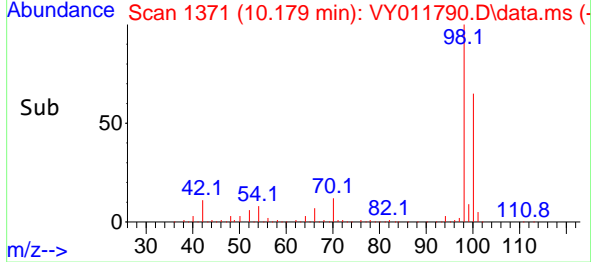
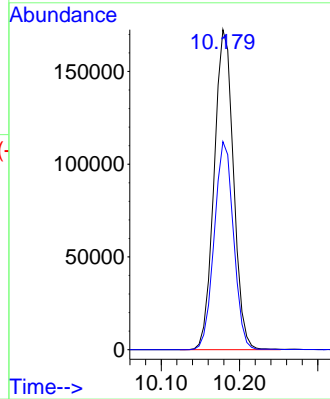
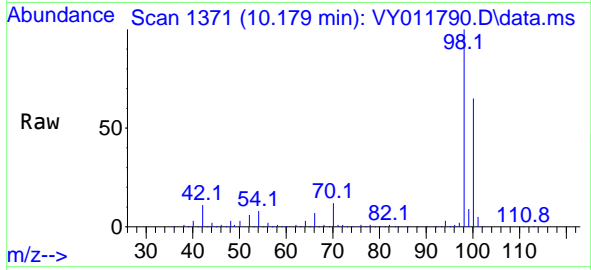




#50  
 Toluene-d8  
 Concen: 42.232 ug/l  
 RT: 10.179 min Scan# 11  
 Delta R.T. -0.000 min  
 Lab File: VY011790.D  
 Acq: 13 Dec 2022 13:55

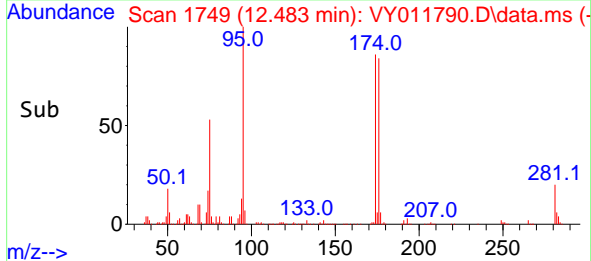
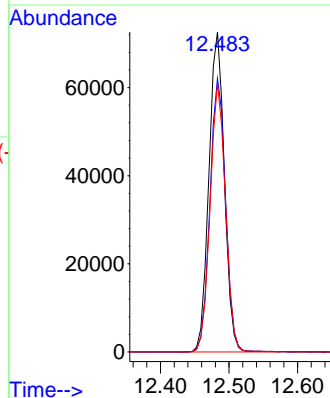
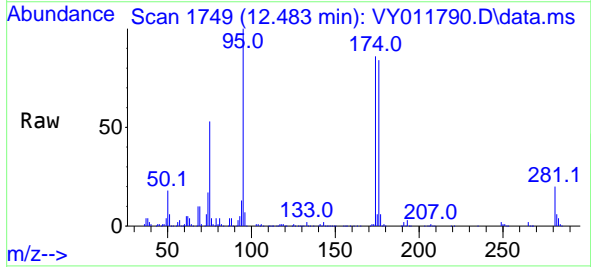
Instrument :  
 MSVOA\_Y  
 ClientSampleId :  
 SU-518-COMP-05

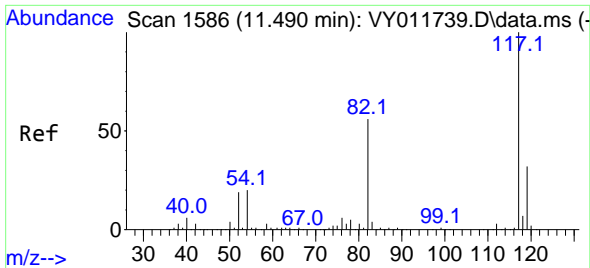
Tgt Ion: 98 Resp: 296346  
 Ion Ratio Lower Upper  
 98 100  
 100 64.8 51.9 77.9



#62  
 4-Bromofluorobenzene  
 Concen: 40.882 ug/l  
 RT: 12.483 min Scan# 1749  
 Delta R.T. 0.000 min  
 Lab File: VY011790.D  
 Acq: 13 Dec 2022 13:55

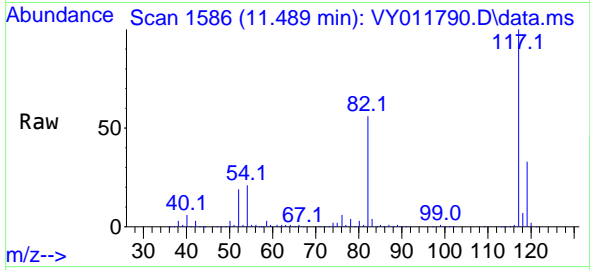
Tgt Ion: 95 Resp: 113729  
 Ion Ratio Lower Upper  
 95 100  
 174 86.9 0.0 172.0  
 176 83.5 0.0 167.6





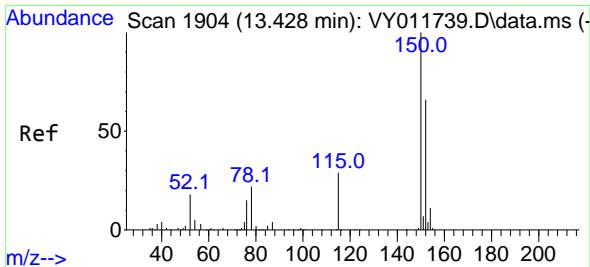
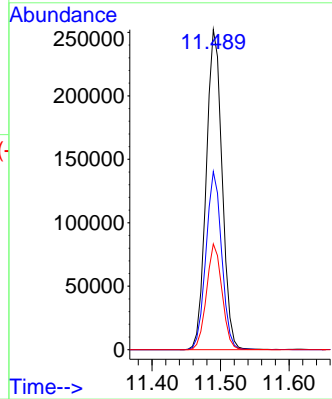
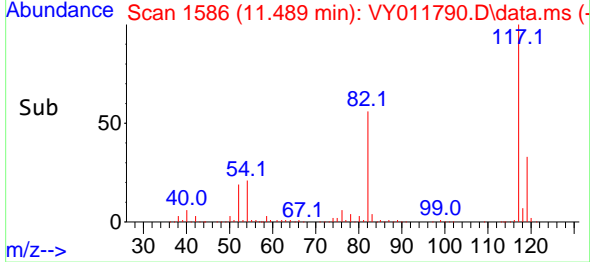
#63  
 Chlorobenzene-d5  
 Concen: 50.000 ug/l  
 RT: 11.489 min Scan# 1117  
 Delta R.T. -0.000 min  
 Lab File: VY011790.D  
 Acq: 13 Dec 2022 13:55

Instrument : MSVOA\_Y  
 ClientSampleId : SU-518-COMP-05

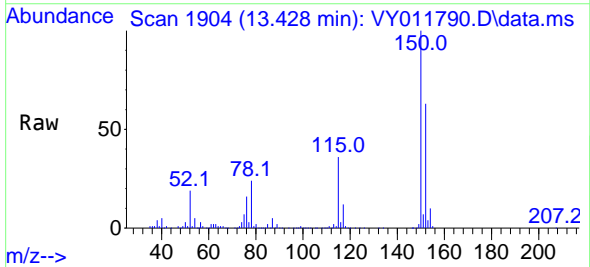


Tgt Ion:117 Resp: 407335

Ion	Ratio	Lower	Upper
117	100		
82	55.7	44.8	67.2
119	33.0	25.4	38.2

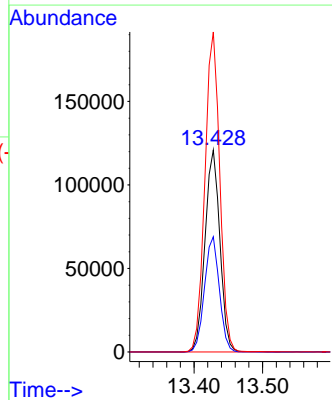
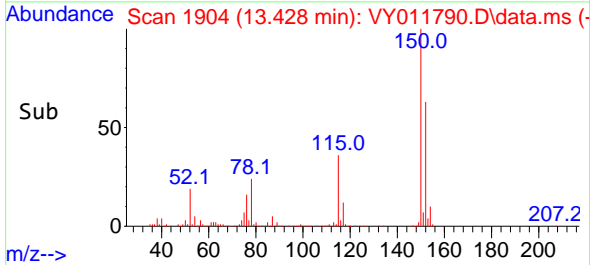


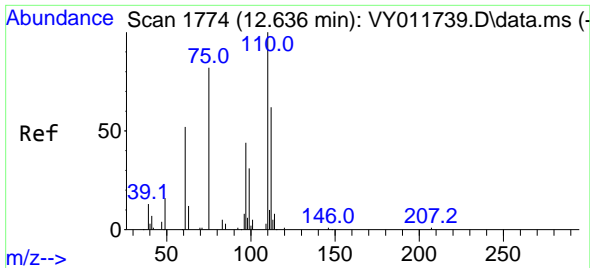
#72  
 1,4-Dichlorobenzene-d4  
 Concen: 50.000 ug/l  
 RT: 13.428 min Scan# 1904  
 Delta R.T. -0.000 min  
 Lab File: VY011790.D  
 Acq: 13 Dec 2022 13:55



Tgt Ion:152 Resp: 183083

Ion	Ratio	Lower	Upper
152	100		
115	56.9	29.1	87.3
150	158.1	0.0	342.6

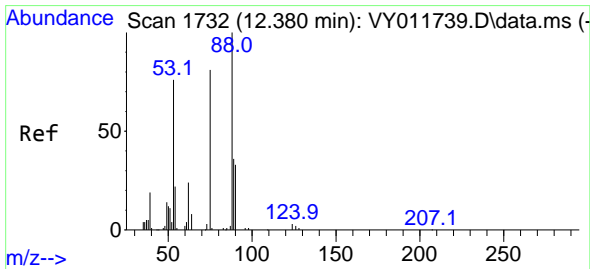
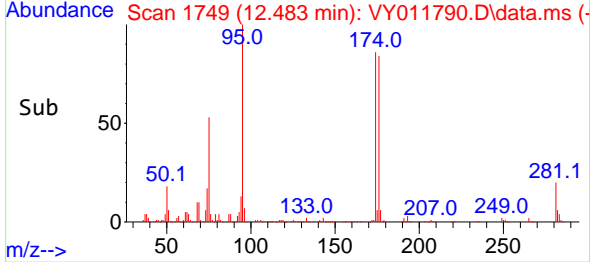
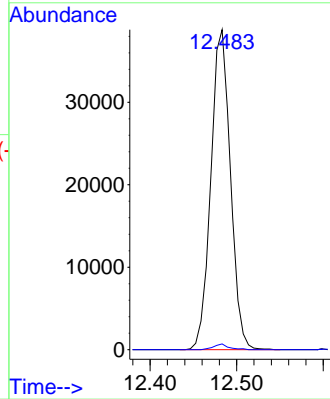
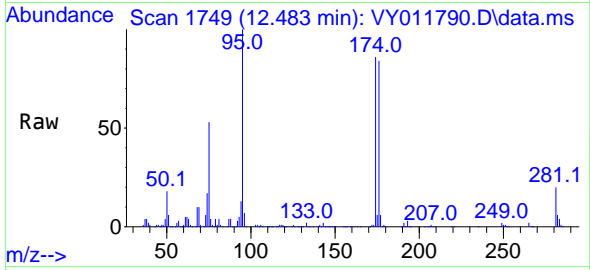




#76  
 1,2,3-Trichloropropane  
 Concen: 32.852 ug/l  
 RT: 12.483 min Scan# 1749  
 Delta R.T. -0.153 min  
 Lab File: VY011790.D  
 Acq: 13 Dec 2022 13:55

Instrument : MSVOA\_Y  
 ClientSampleId : SU-518-COMP-05

Tgt Ion: 75 Resp: 60852  
 Ion Ratio Lower Upper  
 75 100  
 77 1.4 0.0 0.0#



#81  
 trans-1,4-Dichloro-2-butene  
 Concen: 74.547 ug/l  
 RT: 12.483 min Scan# 1749  
 Delta R.T. 0.104 min  
 Lab File: VY011790.D  
 Acq: 13 Dec 2022 13:55

Tgt Ion: 75 Resp: 60852  
 Ion Ratio Lower Upper  
 75 100  
 53 0.1 72.5 108.7#  
 89 0.4 37.0 55.4#

