

Data Path : Z:\voasrv\HPCHEM1\MSVOA_Y\Data\VY121322\
 Data File : VY011826.D
 Acq On : 14 Dec 2022 05:01
 Operator : KP/MD
 Sample : N6037-22
 Misc : 4.51g/5.0mL/MSVOA_Y/SOIL
 ALS Vial : 52 Sample Multiplier: 1

Instrument :
 MSVOA_Y
 ClientSampleId :
 RB-27-(5-7)

Integration Parameters: RTEINT.P

Integrator: RTE
 Smoothing : ON Filtering: 5
 Sampling : 1 Min Area: 3 % of largest Peak
 Start Thrs: 0.2 Max Peaks: 100
 Stop Thrs : 0 Peak Location: TOP

If leading or trailing edge < 100 prefer < Baseline drop else tangent >
 Peak separation: 5

Method : Z:\voasrv\HPCHEM1\MSVOA_Y\methods\82Y120922S.M
 Title : SW846 8260

Signal : TIC: VY011826.D\data.ms

peak #	R.T. min	first scan	max scan	last scan	PK TY	peak height	corr. area	corr. % max.	% of total
1	4.723	464	476	492	rVB	40102	122903	11.41%	2.154%
2	7.722	957	968	973	rBV	136182	326013	30.28%	5.714%
3	7.789	973	979	992	rVB	324507	731999	67.98%	12.829%
4	8.143	1028	1037	1048	rBV	120110	257065	23.87%	4.505%
5	8.691	1118	1127	1138	rBV	512179	990960	92.03%	17.367%
6	10.179	1364	1371	1380	rBV	415352	717129	66.60%	12.568%
7	11.490	1578	1586	1599	rBV	663409	1076821	100.00%	18.872%
8	12.483	1742	1749	1764	rBV2	373306	612729	56.90%	10.738%
9	13.428	1892	1904	1914	rBV	559035	851891	79.11%	14.930%
10	13.965	1985	1992	1998	rBV3	11637	18442	1.71%	0.323%

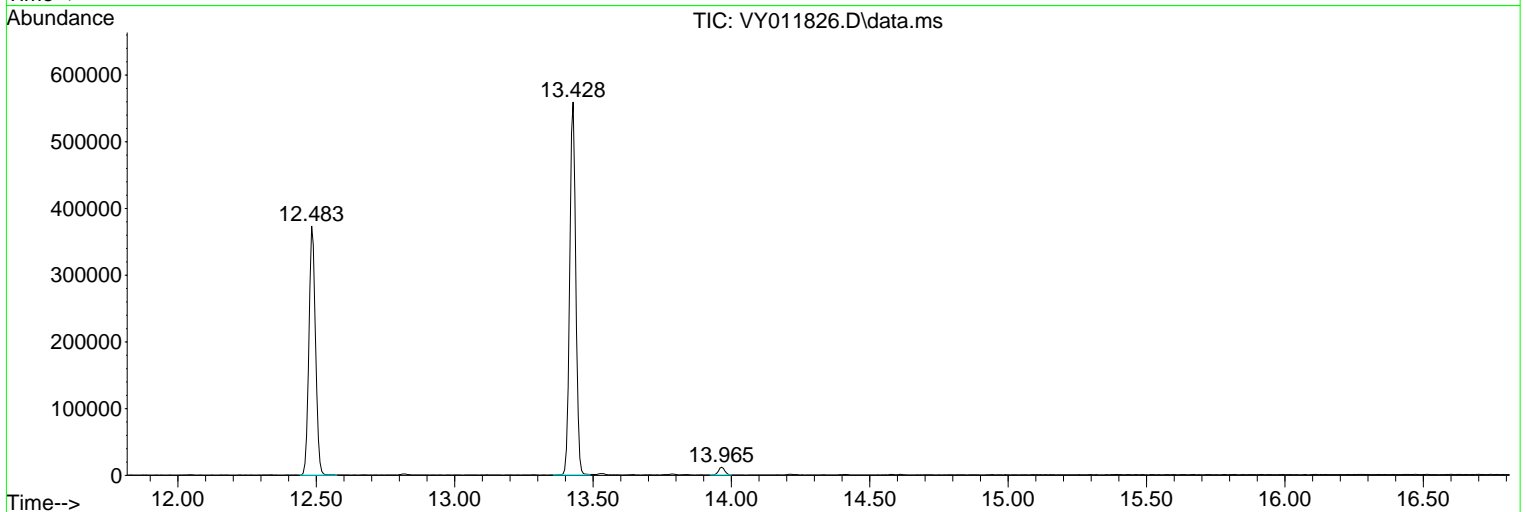
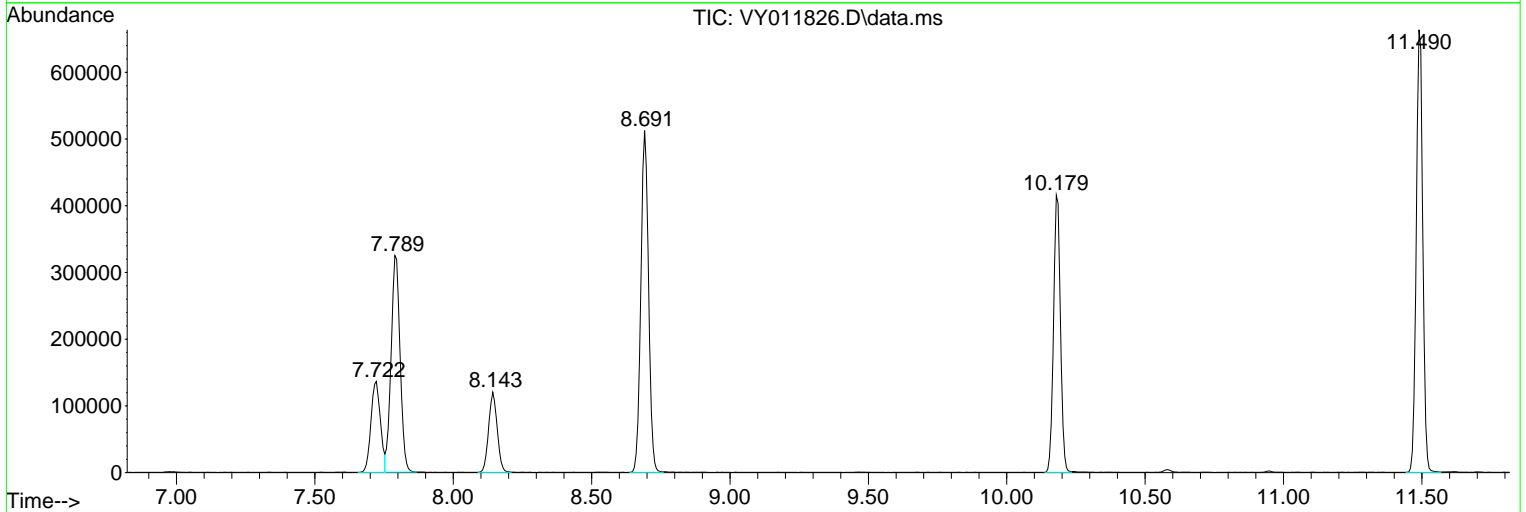
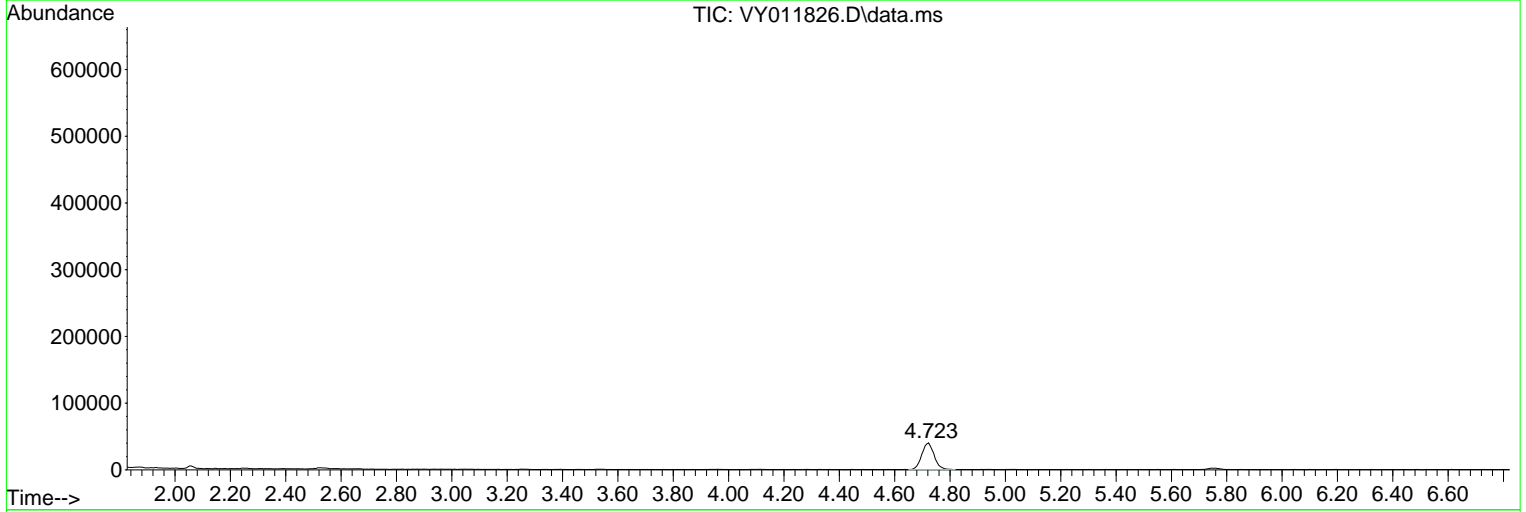
Sum of corrected areas: 5705952

Data Path : Z:\voasrv\HPCHEM1\MSVOA_Y\Data\VY121322\
 Data File : VY011826.D
 Acq On : 14 Dec 2022 05:01
 Operator : KP/MD
 Sample : N6037-22
 Misc : 4.51g/5.0mL/MSVOA_Y/SOIL
 ALS Vial : 52 Sample Multiplier: 1

Instrument :
 MSVOA_Y
 ClientSampleId :
 RB-27-(5-7)

Quant Method : Z:\voasrv\HPCHEM1\MSVOA_Y\methods\82Y120922S.M
 Quant Title : SW846 8260

TIC Library : C:\Database\NIST20.L
 TIC Integration Parameters: LSCINT.P



Library Search Compound Report

Data Path : Z:\voasrv\HPCHEM1\MSVOA_Y\Data\VY121322\
Data File : VY011826.D
Acq On : 14 Dec 2022 05:01
Operator : KP/MD
Sample : N6037-22
Misc : 4.51g/5.0mL/MSVOA_Y/SOIL
ALS Vial : 52 Sample Multiplier: 1

Instrument :
MSVOA_Y
ClientSampleId :
RB-27-(5-7)

Quant Method : Z:\voasrv\HPCHEM1\MSVOA_Y\methods\82Y120922S.M
Quant Title : SW846 8260

TIC Library : C:\Database\NIST20.L
TIC Integration Parameters: LSCINT.P

No Library Search Compounds Detected

Data Path : Z:\voasrv\HPCHEM1\MSVOA_Y\Data\VY121322\
Data File : VY011826.D
Acq On : 14 Dec 2022 05:01
Operator : KP/MD
Sample : N6037-22
Misc : 4.51g/5.0mL/MSVOA_Y/SOIL
ALS Vial : 52 Sample Multiplier: 1

Instrument :
MSVOA_Y
ClientSampleId :
RB-27-(5-7)

Quant Method : Z:\voasrv\HPCHEM1\MSVOA_Y\methods\82Y120922S.M
Quant Title : SW846 8260

TIC Library : C:\Database\NIST0.L
TIC Integration Parameters: LSCINT.P

TIC Top Hit name	RT	EstConc	Units	Response	--Internal Standard--			
					#	RT	Resp	Conc
