

Data Path : Z:\VOASRV\HPCHEM1\MSVOA Y\DATA\VY121420\
 Data File : VY003762.D
 Acq On : 14 Dec 2020 21:05
 Operator : SY/MD
 Sample : VIBLK67
 Misc : 5.00G/10ML/MSVOA Y/SOIL
 ALS Vial : 26 Sample Multiplier: 1

Instrument :
 MSVOA_Y
 ClientSampleId :
 VIBLK67

Quant Time: Dec 15 05:24:22 2020
 Quant Method : Z:\VOASRV\HPCHEM1\MSVOA_Y\METHODS\SOM2YLM121420S.M
 Quant Title : VOC Analysis
 QLast Update : Tue Dec 15 03:40:13 2020
 Response via : Initial Calibration

Internal Standards	R.T.	QIon	Response	Conc	Units	Dev(Min)
1) 1,4-Difluorobenzene	8.70	114	336474	25.00	ug/L	0.00
28) Chlorobenzene-d5	11.49	117	314102	25.00	ug/L	0.00
60) 1,4-Dichlorobenzene-d4	13.42	152	161753	25.00	ug/L	0.00

System Monitoring Compounds

4) Vinyl Chloride-d3	2.25	65	122810	26.75	ug/L	0.00
Spiked Amount	25.000	Range	30 - 150	Recovery	=	107.00%
7) Chloroethane-d5	2.77	69	94237	27.53	ug/L	0.00
Spiked Amount	25.000	Range	30 - 150	Recovery	=	110.12%
10) 1,1-Dichloroethene-d2	3.86	63	181616	18.82	ug/L	0.00
Spiked Amount	25.000	Range	45 - 110	Recovery	=	75.28%
20) 2-Butanone-d5	6.90	46	112857	56.40	ug/L	0.00
Spiked Amount	50.000	Range	20 - 135	Recovery	=	112.80%
24) Chloroform-d	7.49	84	222140	25.42	ug/L	0.00
Spiked Amount	25.000	Range	40 - 150	Recovery	=	101.68%
26) 1,2-Dichloroethane-d4	8.15	65	136809	27.69	ug/L	0.00
Spiked Amount	25.000	Range	70 - 130	Recovery	=	110.76%
29) Benzene-d6	8.12	84	467924	25.74	ug/L	0.00
Spiked Amount	25.000	Range	20 - 135	Recovery	=	102.96%
33) 1,2-Dichloropropane-d6	9.12	67	143237	25.30	ug/L	0.00
Spiked Amount	25.000	Range	70 - 120	Recovery	=	101.20%
37) Toluene-d8	10.18	98	423146	25.72	ug/L	0.00
Spiked Amount	25.000	Range	30 - 130	Recovery	=	102.88%
38) trans-1,3-Dichloropropene-	10.44	79	72332	26.21	ug/L	0.00
Spiked Amount	25.000	Range	30 - 135	Recovery	=	104.84%
39) 2-Hexanone-d5	10.79	63	85980	55.08	ug/L	0.00
Spiked Amount	50.000	Range	20 - 135	Recovery	=	110.16%
48) 1,1,2,2-Tetrachloroethane-	12.56	84	130074	26.28	ug/L	0.00
Spiked Amount	25.000	Range	45 - 120	Recovery	=	105.12%
61) 1,2-Dichlorobenzene-d4	13.72	152	158731	27.32	ug/L	0.00
Spiked Amount	25.000	Range	75 - 120	Recovery	=	109.28%

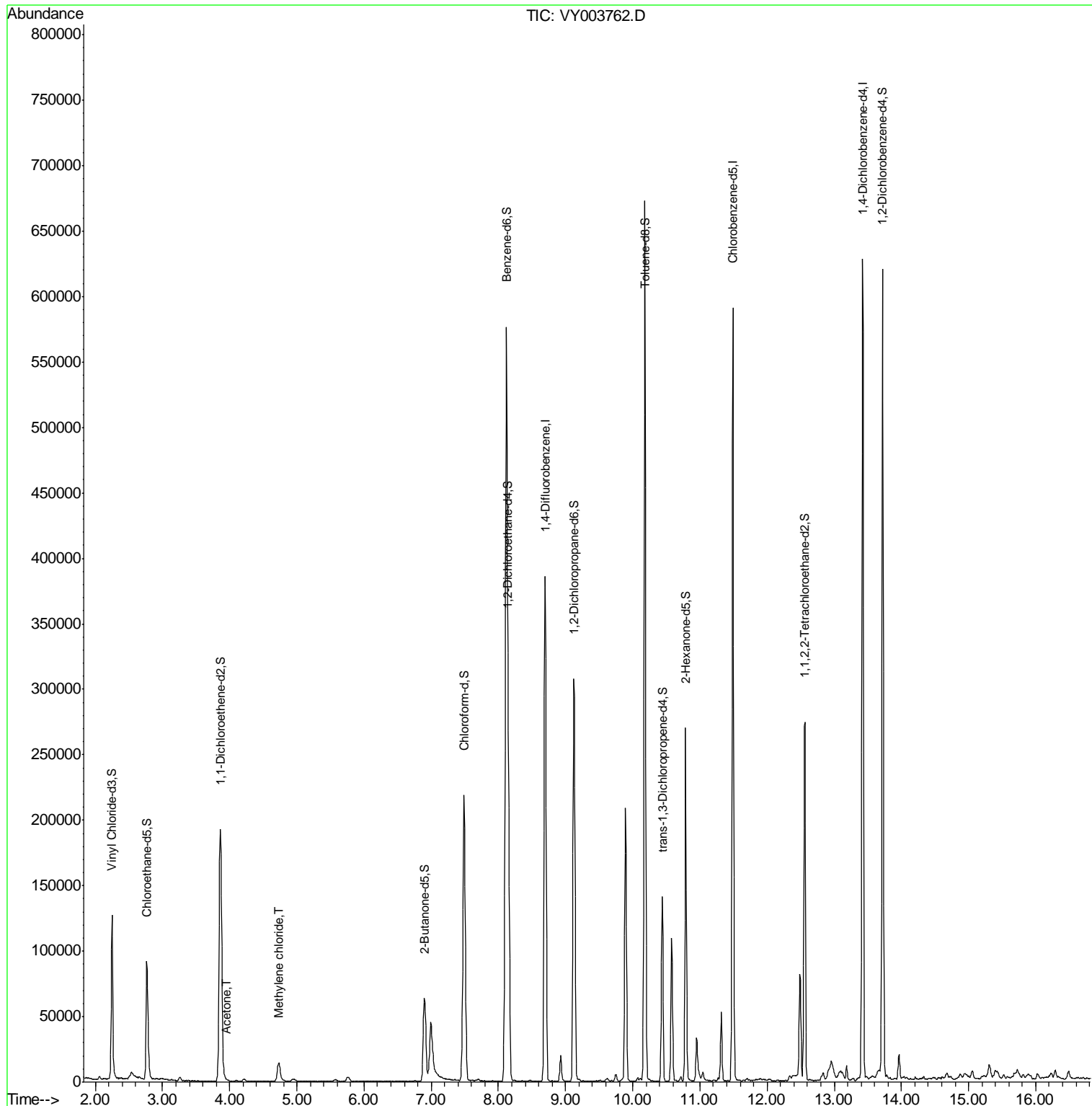
Target Compounds					Ovalue
13) Acetone	3.95	43	1267	0.918 ug/L	71
16) Methylene chloride	4.73	84	10036	1.661 ug/L	89

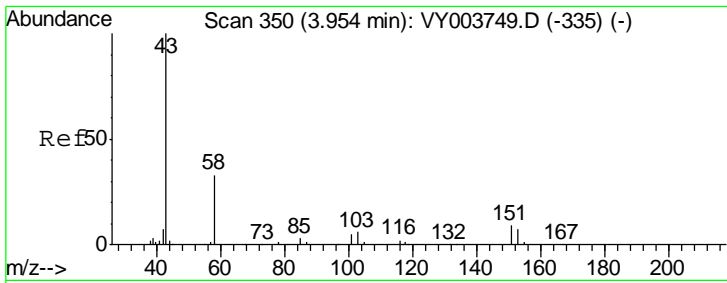
(#) = qualifier out of range (m) = manual integration (+) = signals summed

Data Path : Z:\VOASRV\HPCHEM1\MSVOA Y\DATA\VY121420\
 Data File : VY003762.D
 Acq On : 14 Dec 2020 21:05
 Operator : SY/MD
 Sample : VIBLK67
 Misc : 5.00G/10ML/MSVOA Y/SOIL
 ALS Vial : 26 Sample Multiplier: 1

Instrument :
 MSVOA_Y
 Client Sampled :
 VIBLK67

Quant Time: Dec 15 05:24:22 2020
 Quant Method : Z:\VOASRV\HPCHEM1\MSVOA_Y\METHODS\SOM2YLM121420S.M
 Quant Title : VOC Analysis
 QLast Update : Tue Dec 15 03:40:13 2020
 Response via : Initial Calibration

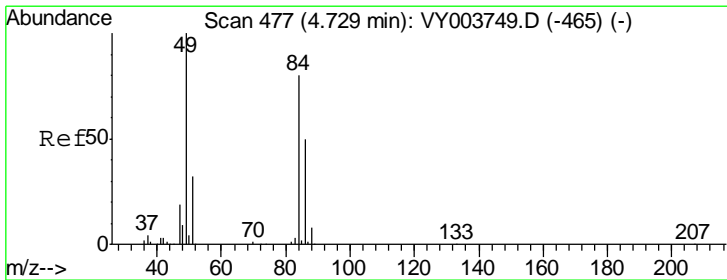
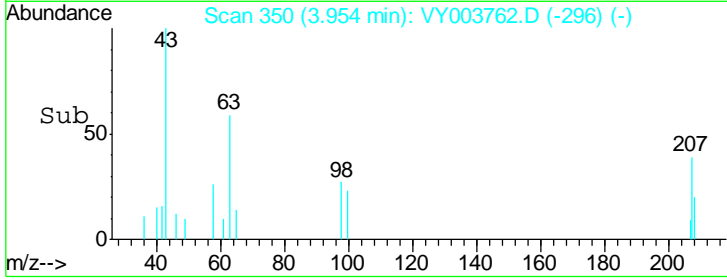
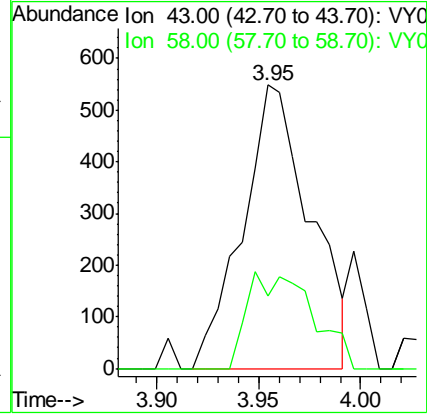
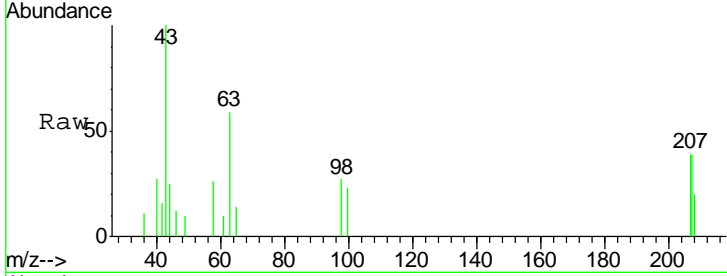




#13
 Acetone
 Concen: 0.918 ug/L
 RT: 3.95 min Scan# 350
 Delta R.T. -0.00 min
 Lab File: VY003762.D
 Acq: 14 Dec 2020 21:05

Instrument :
 MSVOA_Y
 ClientSampled :
 VIBLK67

Tgt Ion: 43 Resp: 1267
 Ion Ratio Lower Upper
 43 100
 58 16.3 0.0 65.4



#16
 Methylene chloride
 Concen: 1.661 ug/L
 RT: 4.73 min Scan# 477
 Delta R.T. -0.00 min
 Lab File: VY003762.D
 Acq: 14 Dec 2020 21:05

Tgt Ion: 84 Resp: 10036
 Ion Ratio Lower Upper
 84 100
 49 110.9 88.2 163.8
 86 56.8 43.0 79.8

