

Data Path : Z:\voasrv\HPCHEM1\MSVOA_Y\Data\VY121620\
 Data File : VY003800.D
 Acq On : 16 Dec 2020 13:28
 Operator : SY/MD
 Sample : L5113-01
 Mi sc : 5.06G/5ML/MSVOA_Y/SOIL
 ALS Vial : 10 Sample Multiplier: 1

Instrument :
 MSVOA_Y
ClientSampled :
 SS1

Quant Time: Dec 17 02:52:11 2020
 Quant Method : Z:\VOASRV\HPCHEM1\MSVOA_Y\METHODS\82Y121520S.M
 Quant Title : SW846 8260
 QLast Update : Wed Dec 16 05:00:50 2020
 Response via : Initial Calibration

Compound	R. T.	QI on	Response	Conc	Units	Dev(Min)

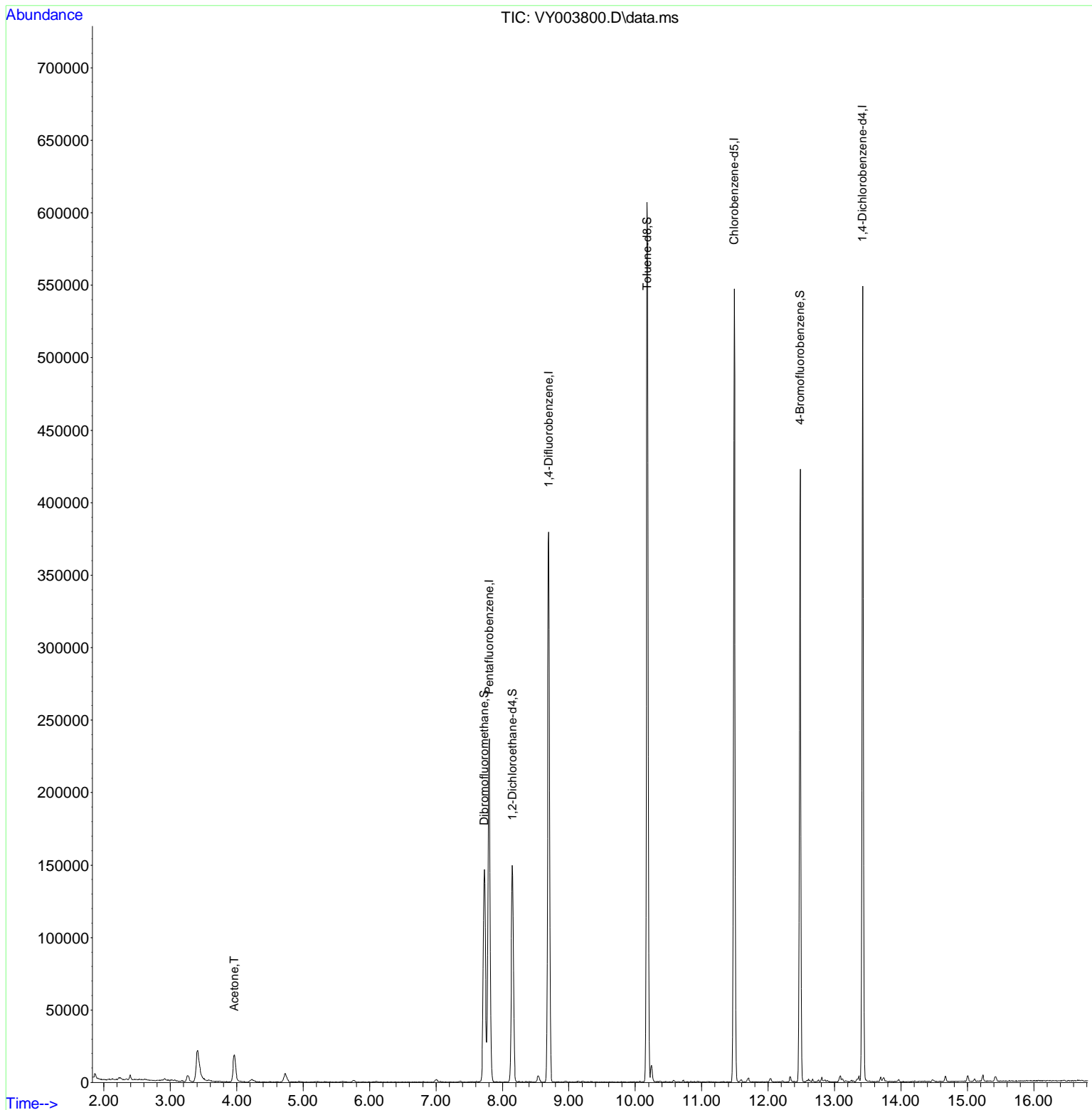
Internal Standards						
1) Pentafluorobenzene	7.801	168	194856	50.00	ug/l	0.00
34) 1,4-Difluorobenzene	8.697	114	333717	50.00	ug/l	0.00
63) Chlorobenzene-d5	11.489	117	298773	50.00	ug/l	0.00
72) 1,4-Dichlorobenzene-d4	13.422	152	142353	50.00	ug/l	0.00
System Monitoring Compounds						
33) 1,2-Dichloroethane-d4	8.149	65	112764	46.66	ug/l	0.00
Spiked Amount	50.000	Range 50 - 163	Recovery	=	93.32%	
35) Dibromofluoromethane	7.728	113	103490	42.87	ug/l	0.00
Spiked Amount	50.000	Range 54 - 147	Recovery	=	85.74%	
50) Toluene-d8	10.179	98	398339	41.68	ug/l	0.00
Spiked Amount	50.000	Range 49 - 140	Recovery	=	83.36%	
62) 4-Bromofluorobenzene	12.483	95	125031	38.08	ug/l	0.00
Spiked Amount	50.000	Range 25 - 144	Recovery	=	76.16%	
Target Compounds						
16) Acetone	3.960	43	32409	58.31	ug/l	96

(#) = qualifier out of range (m) = manual integration (+) = signals summed

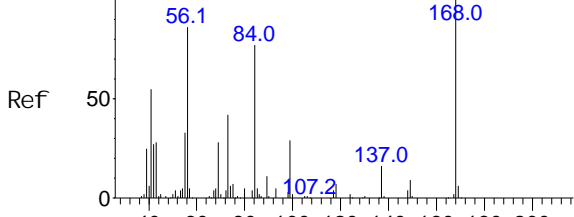
Data Path : Z:\voasrv\HPCHEM1\MSVOA_Y\Data\VY121620\
 Data File : VY003800.D
 Acq On : 16 Dec 2020 13:28
 Operator : SY/MD
 Sample : L5113-01
 Misc : 5.06G/5ML/MSVOA_Y/SOIL
 ALS Vial : 10 Sample Multiplier: 1

Instrument :
 MSVOA_Y
 ClientSampleId :
 SS1

Quant Time: Dec 17 02:52:11 2020
 Quant Method : Z:\VOASRV\HPCHEM1\MSVOA_Y\METHODS\82Y121520S.M
 Quant Title : SW846 8260
 QLast Update : Wed Dec 16 05:00:50 2020
 Response via : Initial Calibration



Abundance Scan 981 (7.801 min): VY003771.D\data.ms (-970)#(4)

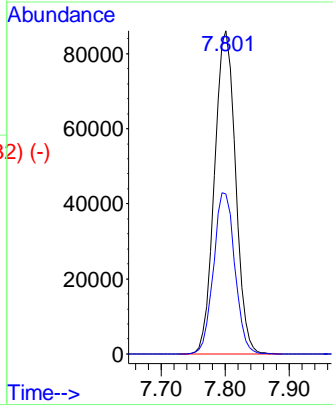
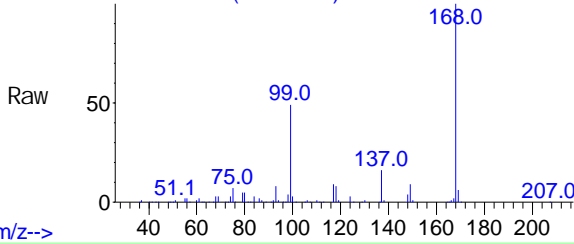


Pentaf luorobenzene
Concen: 50.00 ug/l
RT: 7.801 min Scan# 981
Delta R.T. 0.000 min
Lab File: VY003800.D
Acq: 16 Dec 2020 13:28

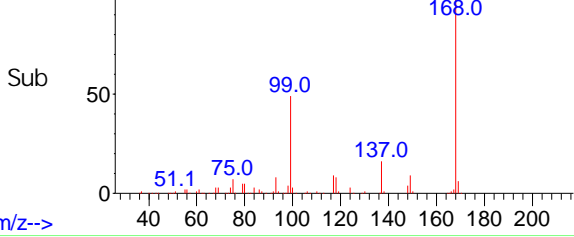
Instrument : MSVOA_Y
ClientSampled : SS1

Tgt Ion: 168 Resp: 194856
Ion Ratio Lower Upper
168 100
99 49.5 41.9 62.9

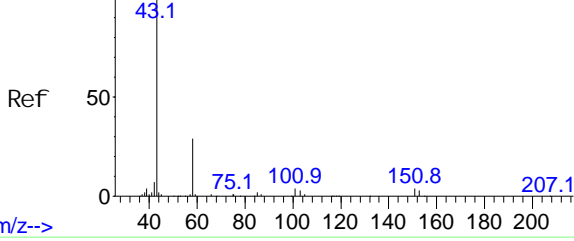
Abundance Scan 981 (7.801 min): VY003800.D\data.ms



Abundance Scan 981 (7.801 min): VY003800.D\data.ms (-932) (-)



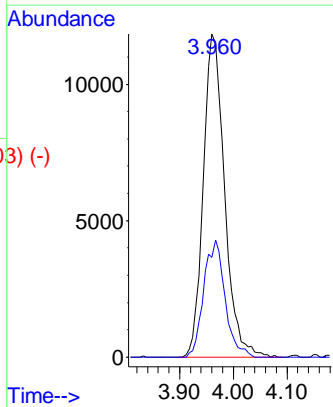
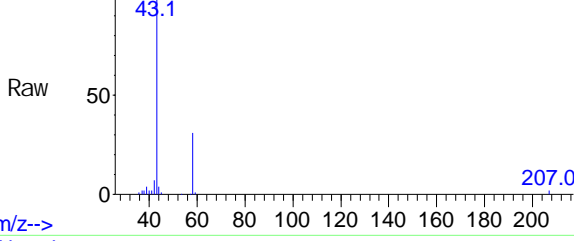
Abundance Scan 352 (3.967 min): VY003771.D\data.ms (-333)#(16)



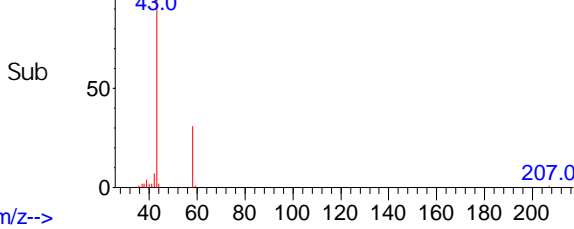
Acetone
Concen: 58.31 ug/l
RT: 3.960 min Scan# 351
Delta R.T. -0.006 min
Lab File: VY003800.D
Acq: 16 Dec 2020 13:28

Tgt Ion: 43 Resp: 32409
Ion Ratio Lower Upper
43 100
58 30.9 22.9 34.3

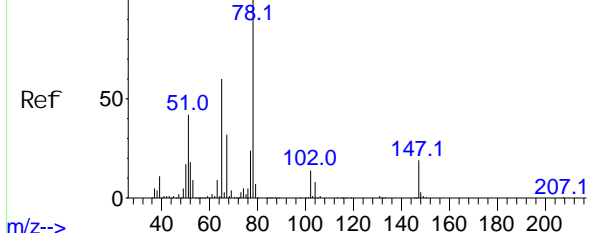
Abundance Scan 351 (3.960 min): VY003800.D\data.ms



Abundance Scan 351 (3.960 min): VY003800.D\data.ms (-303) (-)



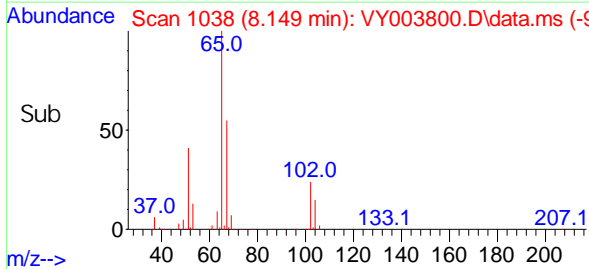
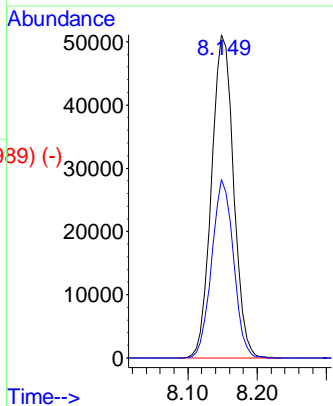
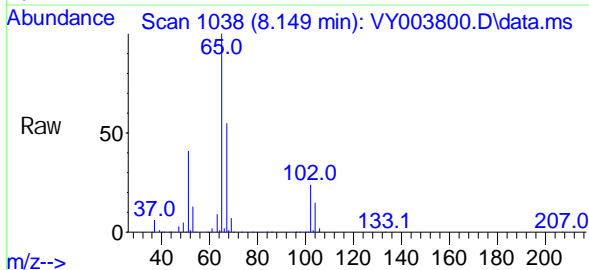
Abundance Scan 1038 (8.149 min): VY003771.D\data.ms (-10733)



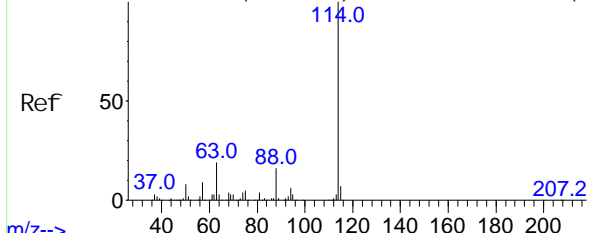
1, 2-Di chloroethane-d4
Concen: 46.66 ug/l
RT: 8.149 min Scan# 1038
Delta R.T. -0.000 min
Lab File: VY003800.D
Acq: 16 Dec 2020 13:28

Instrument : MSVOA_Y
ClientSampled : SS1

Tgt Ion: 65 Resp: 112764
Ion Ratio Lower Upper
65 100
67 54.4 0.0 107.6

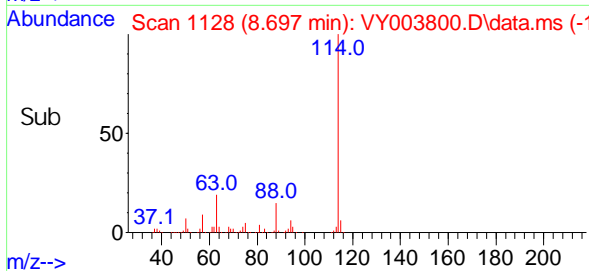
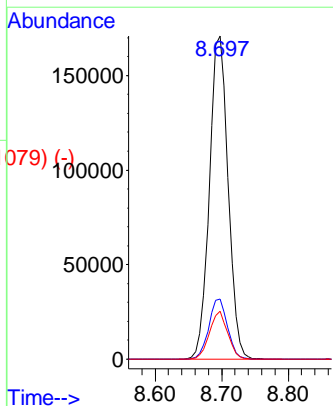
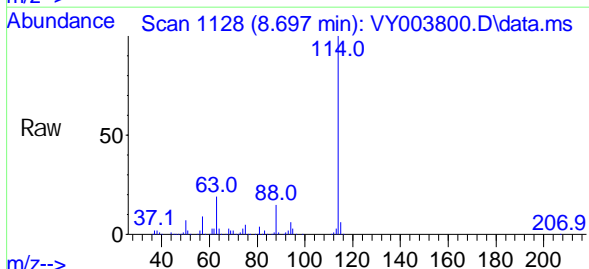


Abundance Scan 1128 (8.697 min): VY003771.D\data.ms (-11634)

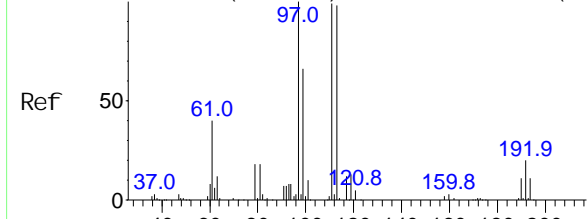


1, 4-Di fluorobenzene
Concen: 50.00 ug/l
RT: 8.697 min Scan# 1128
Delta R.T. -0.000 min
Lab File: VY003800.D
Acq: 16 Dec 2020 13:28

Tgt Ion: 114 Resp: 333717
Ion Ratio Lower Upper
114 100
63 18.6 0.0 38.4
88 14.8 0.0 31.8



Abundance Scan 969 (7.728 min): VY003771.D\data.ms (-958) #35

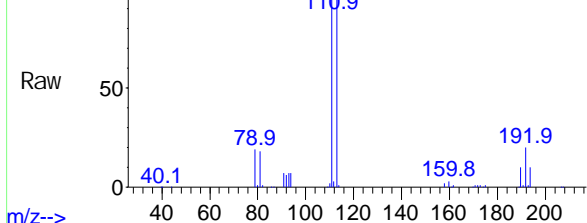


Di bromofluoromethane
Concen: 42.87 ug/l
RT: 7.728 min Scan# 969
Delta R.T. -0.000 min
Lab File: VY003800.D
Acq: 16 Dec 2020 13:28

Instrument : MSVOA_Y
Client Sampled : SS1

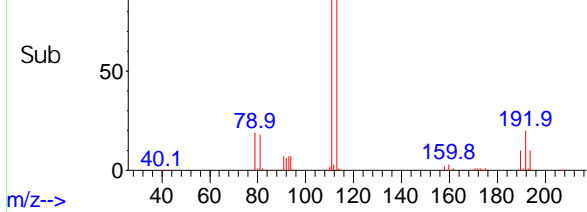
m/z-->

Abundance Scan 969 (7.728 min): VY003800.D\data.ms



m/z-->

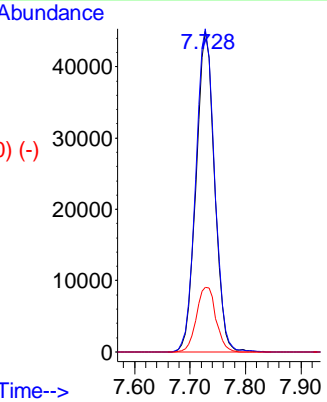
Abundance Scan 969 (7.728 min): VY003800.D\data.ms (-920) (-)



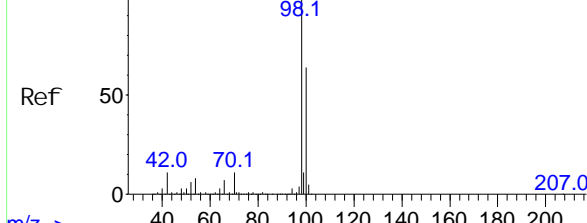
m/z-->

Tgt Ion: 113 Resp: 103490

Ion	Ratio	Lower	Upper
113	100		
111	103.3	82.2	123.2
192	21.2	16.7	25.1

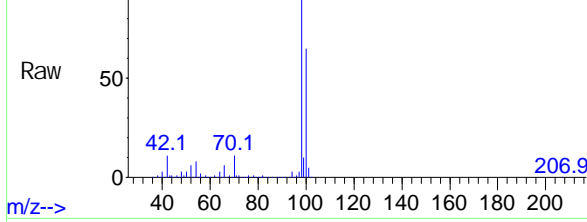


Abundance Scan 1372 (10.185 min): VY003771.D\data.ms (-1352) (-)



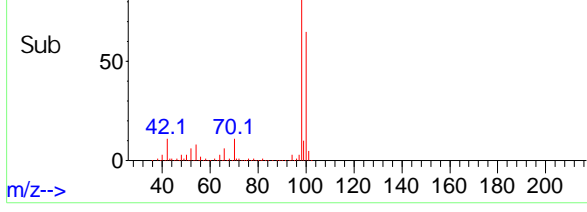
m/z-->

Abundance Scan 1371 (10.179 min): VY003800.D\data.ms



m/z-->

Abundance Scan 1371 (10.179 min): VY003800.D\data.ms (-1323) (-)

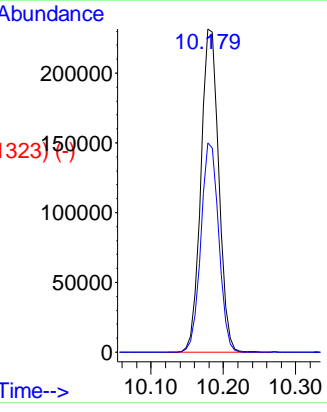


m/z-->

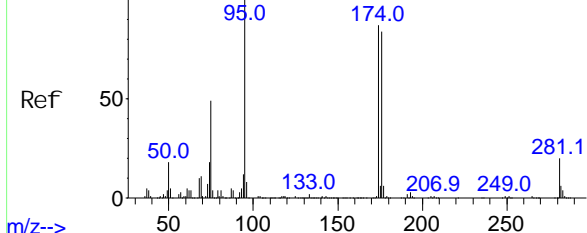
Toluene-d8
Concen: 41.68 ug/l
RT: 10.179 min Scan# 1371
Delta R.T. -0.006 min
Lab File: VY003800.D
Acq: 16 Dec 2020 13:28

Tgt Ion: 98 Resp: 398339

Ion	Ratio	Lower	Upper
98	100		
100	64.6	51.6	77.4



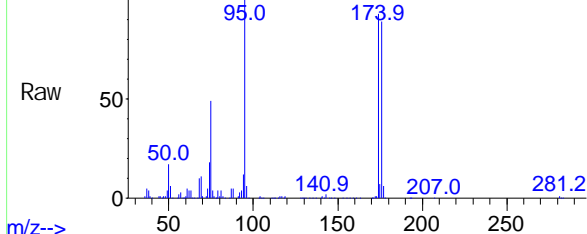
Abundance Scan 1749 (12.483 min): VY003771.D\data.ms (-1763) (-)



4-Bromofluorobenzene
Concen: 38.08 ug/l
RT: 12.483 min Scan# 1749
Delta R.T. -0.000 min
Lab File: VY003800.D
Acq: 16 Dec 2020 13:28

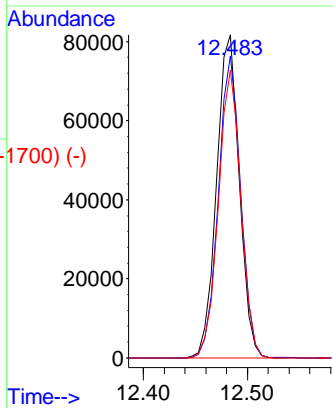
Instrument : MSVOA_Y
Client Sampled : SS1

Abundance Scan 1749 (12.483 min): VY003800.D\data.ms

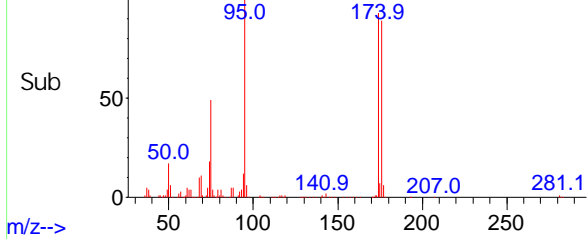


Tgt Ion: 95 Resp: 125031

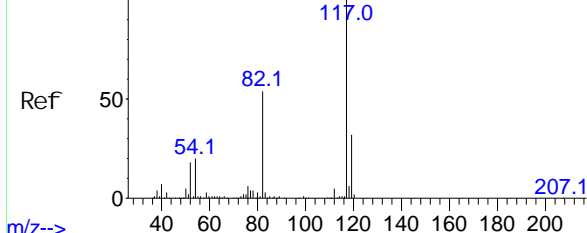
Ion	Ratio	Lower	Upper
95	100		
174	92.1	0.0	170.8
176	88.3	0.0	165.0



Abundance Scan 1749 (12.483 min): VY003800.D\data.ms (-1700) (-)

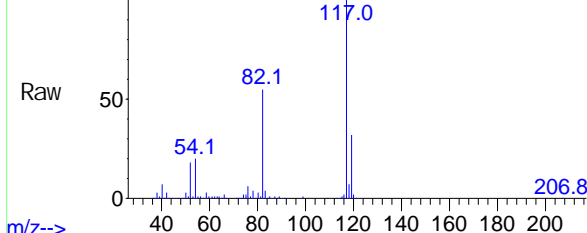


Abundance Scan 1586 (11.490 min): VY003771.D\data.ms (-1553) (-)



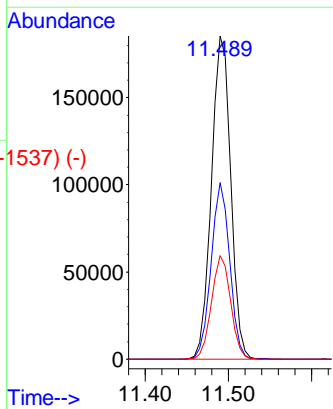
Chlorobenzene-d5
Concen: 50.00 ug/l
RT: 11.489 min Scan# 1586
Delta R.T. -0.000 min
Lab File: VY003800.D
Acq: 16 Dec 2020 13:28

Abundance Scan 1586 (11.489 min): VY003800.D\data.ms

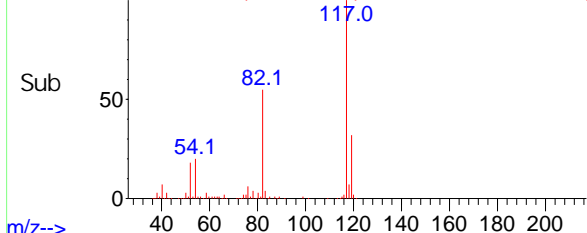


Tgt Ion: 117 Resp: 298773

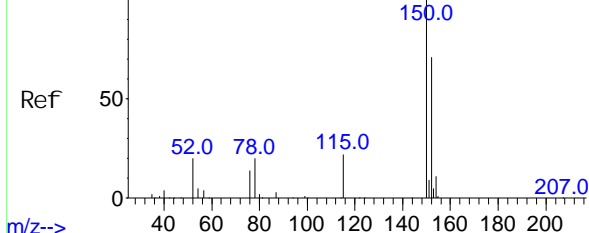
Ion	Ratio	Lower	Upper
117	100		
82	54.6	43.0	64.6
119	32.0	25.7	38.5



Abundance Scan 1586 (11.489 min): VY003800.D\data.ms (-1537) (-)



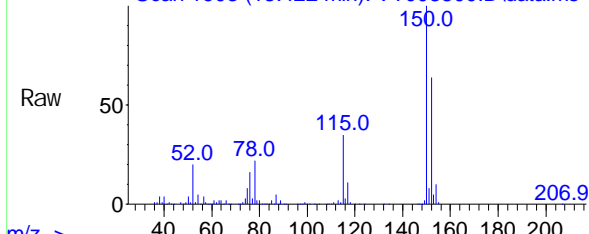
Abundance Scan 1903 (13.422 min): VY003771.D\data.ms (-1853) (-)



1, 4-Di chl orobenzene-d4
 Concen: 50.00 ug/l
 RT: 13.422 mi n Scan# 1903
 Del ta R. T. -0.000 mi n
 Lab Fi le: VY003800. D
 Acq: 16 Dec 2020 13: 28

Instrument :
 MSVOA_Y
ClientSampled :
 SS1

m/z-->



Tgt Ion: 152 Resp: 142353

Ion	Ratio	Lower	Upper
152	100		
115	54.8	28.0	83.9
150	157.0	0.0	347.6

m/z-->

