

Data Path : Z:\voasrv\HPCHEM1\MSVOA_Y\Data\VY122024\
 Data File : VY020678.D
 Acq On : 20 Dec 2024 18:02
 Operator : SY/MD
 Sample : P5306-05
 Misc : 6.04g/5.0mL/MSVOA_Y/SOIL/B
 ALS Vial : 16 Sample Multiplier: 1

Instrument :
 MSVOA_Y
 ClientSampleId :

Quant Time: Dec 20 22:03:12 2024
 Quant Method : Z:\voasrv\HPCHEM1\MSVOA_Y\methods\82Y121724S.M
 Quant Title : SW846 8260
 QLast Update : Wed Dec 18 05:27:13 2024
 Response via : Initial Calibration

Compound	R.T.	QIon	Response	Conc	Units	Dev(Min)

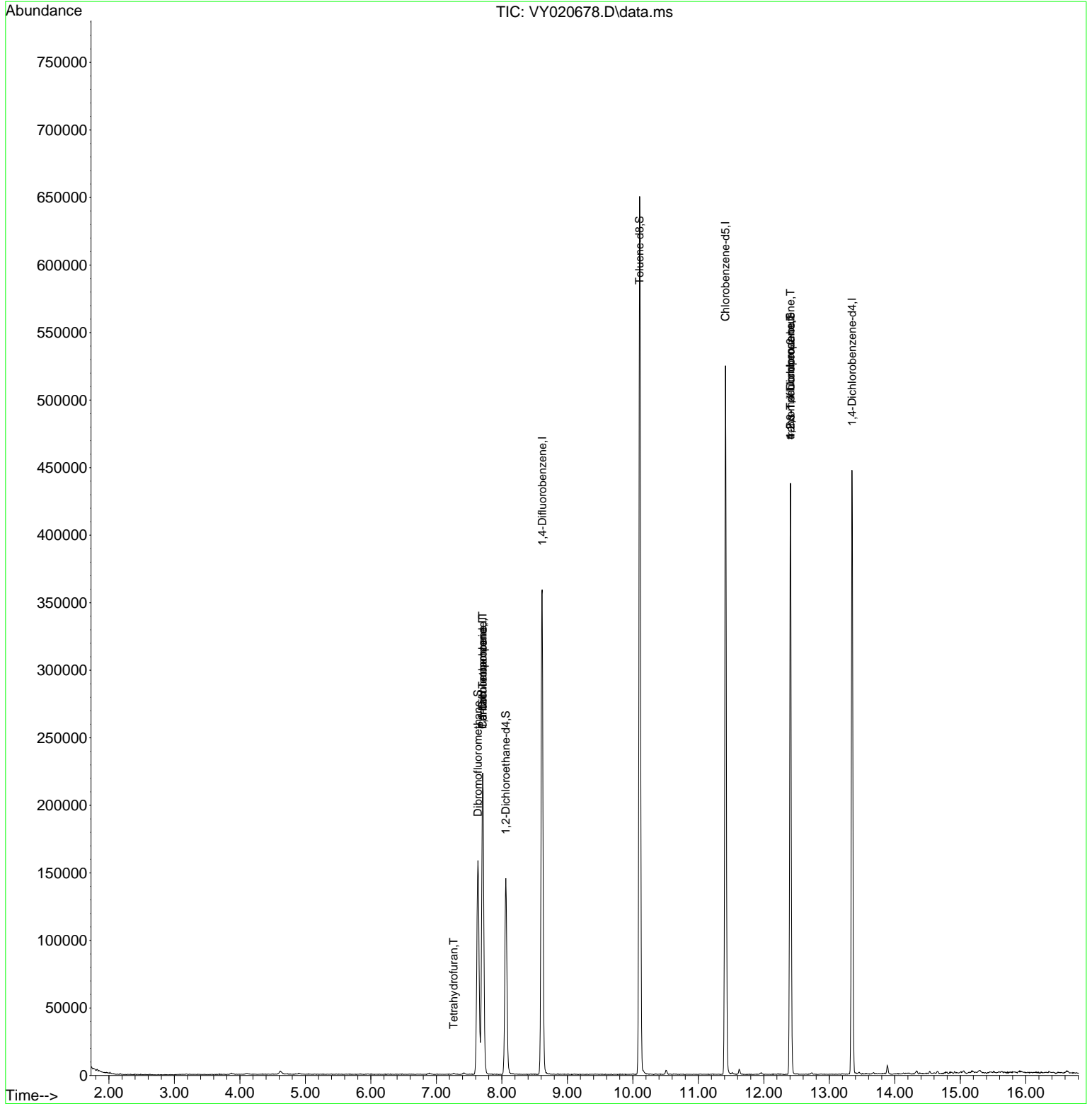
Internal Standards						
1) Pentafluorobenzene	7.707	168	168078	50.000	ug/l	0.00
34) 1,4-Difluorobenzene	8.616	114	307691	50.000	ug/l	0.00
63) Chlorobenzene-d5	11.414	117	271047	50.000	ug/l	0.00
72) 1,4-Dichlorobenzene-d4	13.347	152	109147	50.000	ug/l	0.00
System Monitoring Compounds						
33) 1,2-Dichloroethane-d4	8.061	65	116016	63.024	ug/l	0.00
Spiked Amount	50.000	Range	50 - 163	Recovery	=	126.040%
35) Dibromofluoromethane	7.634	113	111624	51.475	ug/l	0.00
Spiked Amount	50.000	Range	54 - 147	Recovery	=	102.940%
50) Toluene-d8	10.103	98	420376	55.384	ug/l	0.00
Spiked Amount	50.000	Range	58 - 134	Recovery	=	110.760%
62) 4-Bromofluorobenzene	12.408	95	132356	44.578	ug/l	0.00
Spiked Amount	50.000	Range	29 - 146	Recovery	=	89.160%
Target Compounds						
					Qvalue	
11) Tert butyl alcohol	4.842	59	230	Below Cal	#	75
16) Acetone	3.873	43	1194	Below Cal	#	79
29) Tetrahydrofuran	7.262	42	627	1.452	ug/l #	74
30) Chloroform	7.421	83	972	Below Cal		98
36) 1,1-Dichloropropene	7.707	75	13904	3.516	ug/l #	51
38) Carbon Tetrachloride	7.707	117	17258	3.945	ug/l #	15
76) 1,2,3-Trichloropropane	12.408	75	70213	61.926	ug/l #	100
81) trans-1,4-Dichloro-2-b...	12.408	75	70213	129.985	ug/l #	12

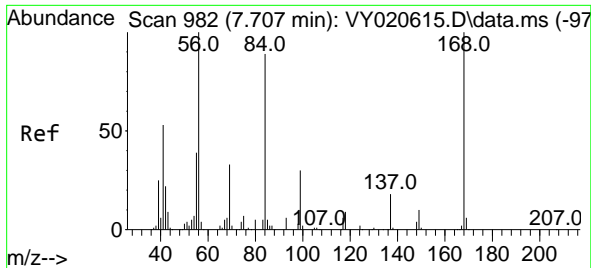
(#) = qualifier out of range (m) = manual integration (+) = signals summed

Data Path : Z:\voasrv\HPCHEM1\MSVOA_Y\Data\VY122024\
 Data File : VY020678.D
 Acq On : 20 Dec 2024 18:02
 Operator : SY/MD
 Sample : P5306-05
 Misc : 6.04g/5.0mL/MSVOA_Y/SOIL/B
 ALS Vial : 16 Sample Multiplier: 1

Instrument :
 MSVOA_Y
 ClientSampleId :

Quant Time: Dec 20 22:03:12 2024
 Quant Method : Z:\voasrv\HPCHEM1\MSVOA_Y\methods\82Y121724S.M
 Quant Title : SW846 8260
 QLast Update : Wed Dec 18 05:27:13 2024
 Response via : Initial Calibration

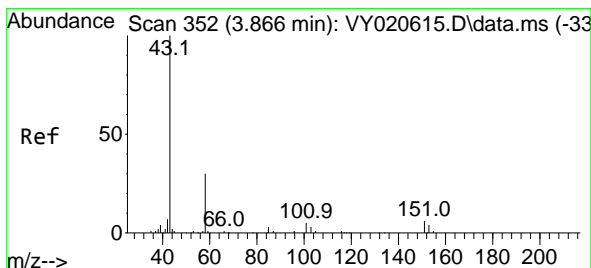
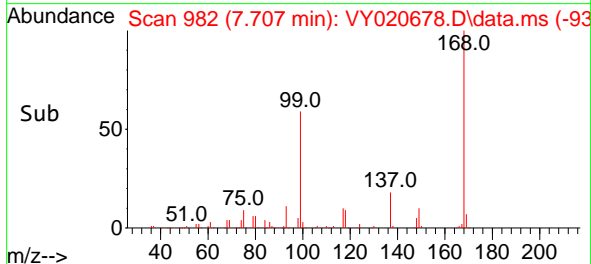
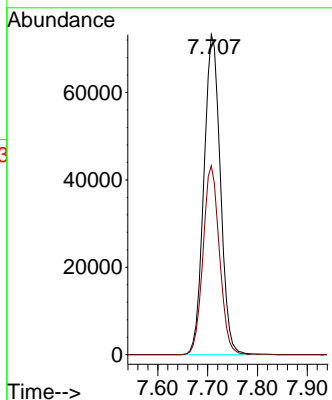
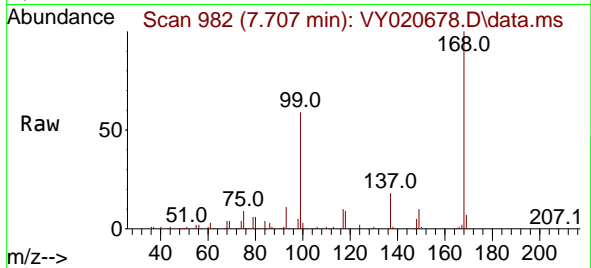




#1
 Pentafluorobenzene
 Concen: 50.000 ug/l
 RT: 7.707 min Scan# 91
 Delta R.T. 0.000 min
 Lab File: VY020678.D
 Acq: 20 Dec 2024 18:02

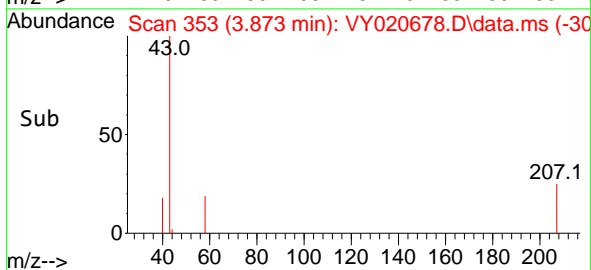
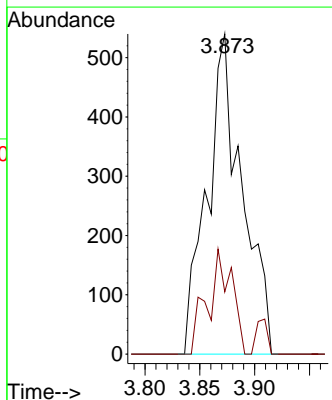
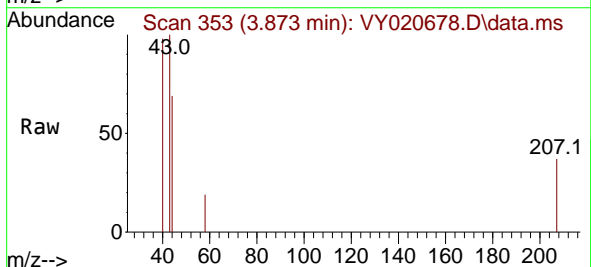
Instrument :
 MSVOA_Y
 ClientSampleId :

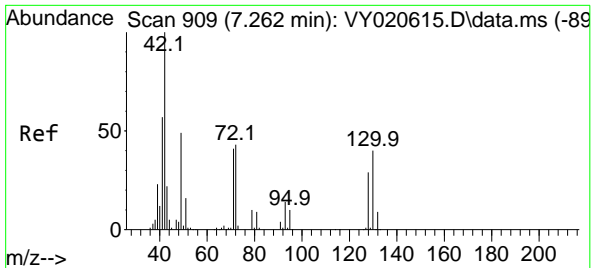
Tgt Ion:168 Resp: 168078
 Ion Ratio Lower Upper
 168 100
 99 59.1 47.0 70.6



#16
 Acetone
 Concen: Below Cal
 RT: 3.873 min Scan# 353
 Delta R.T. 0.007 min
 Lab File: VY020678.D
 Acq: 20 Dec 2024 18:02

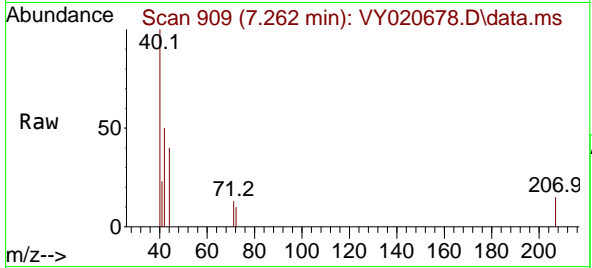
Tgt Ion: 43 Resp: 1194
 Ion Ratio Lower Upper
 43 100
 58 19.4 25.0 37.6#





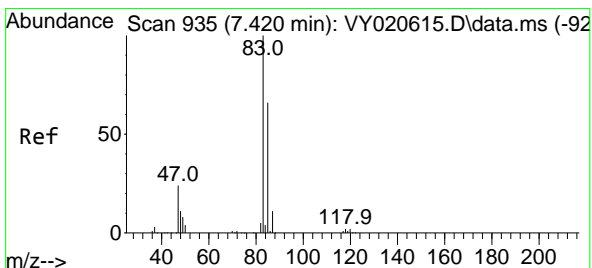
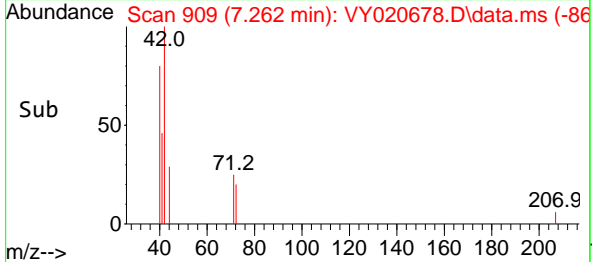
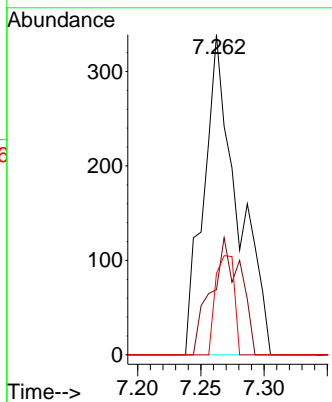
#29
 Tetrahydrofuran
 Concen: 1.452 ug/l
 RT: 7.262 min Scan# 909
 Delta R.T. 0.000 min
 Lab File: VY020678.D
 Acq: 20 Dec 2024 18:02

Instrument : MSVOA_Y
 ClientSampleId :



Tgt Ion: 42 Resp: 627

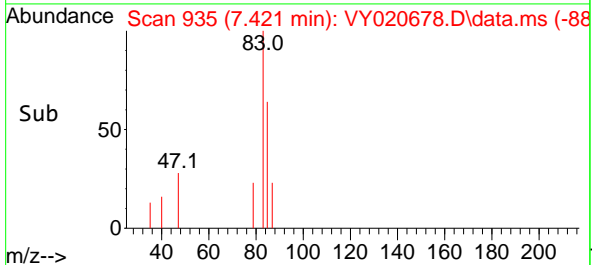
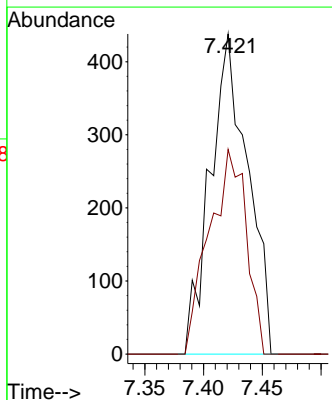
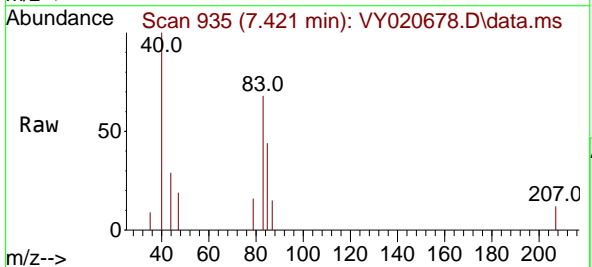
Ion	Ratio	Lower	Upper
42	100		
72	31.9	34.0	51.0#
71	17.2	31.6	47.4#

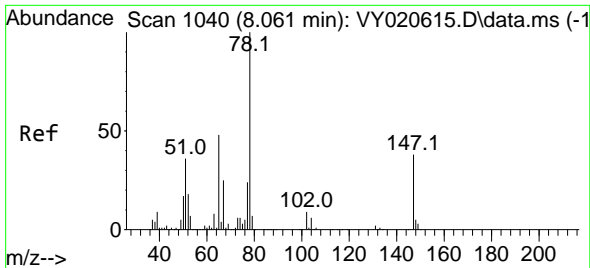


#30
 Chloroform
 Concen: Below Cal
 RT: 7.421 min Scan# 935
 Delta R.T. 0.001 min
 Lab File: VY020678.D
 Acq: 20 Dec 2024 18:02

Tgt Ion: 83 Resp: 972

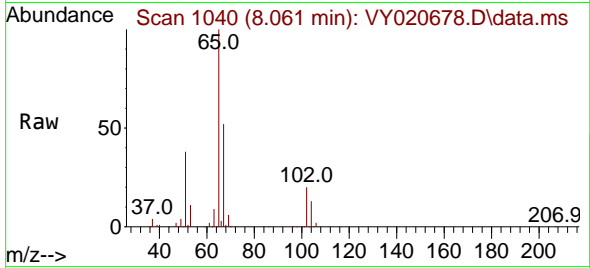
Ion	Ratio	Lower	Upper
83	100		
85	63.9	52.7	79.1



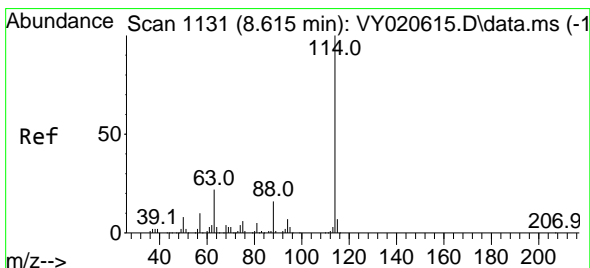
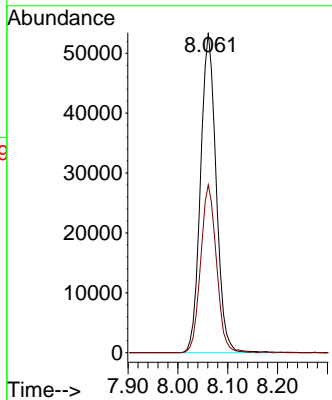
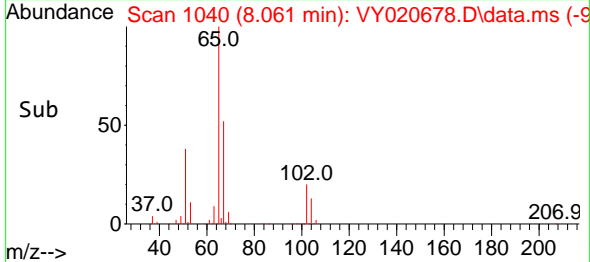


#33
 1,2-Dichloroethane-d4
 Concen: 63.024 ug/l
 RT: 8.061 min Scan# 1040
 Delta R.T. 0.000 min
 Lab File: VY020678.D
 Acq: 20 Dec 2024 18:02

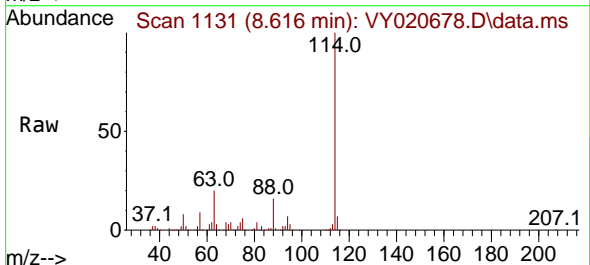
Instrument : MSVOA_Y
 ClientSampleId :



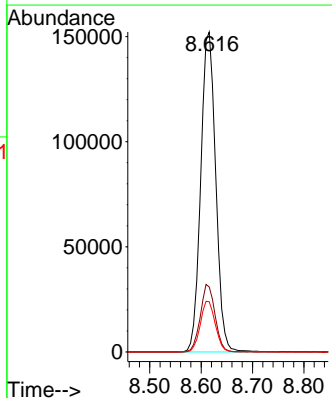
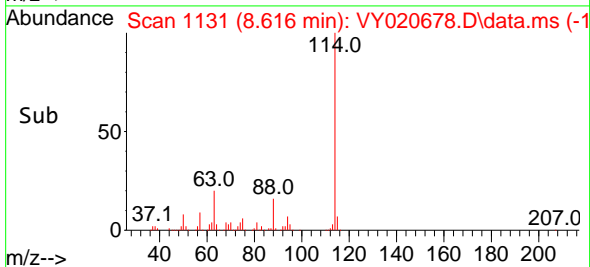
Tgt Ion: 65 Resp: 116016
 Ion Ratio Lower Upper
 65 100
 67 53.0 0.0 108.0

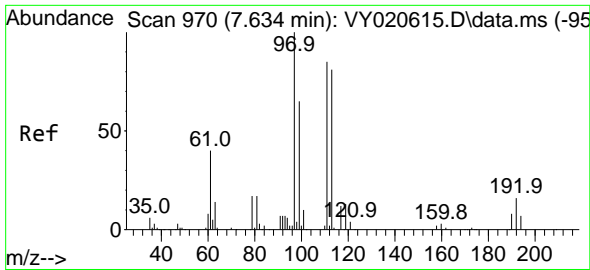


#34
 1,4-Difluorobenzene
 Concen: 50.000 ug/l
 RT: 8.616 min Scan# 1131
 Delta R.T. 0.000 min
 Lab File: VY020678.D
 Acq: 20 Dec 2024 18:02



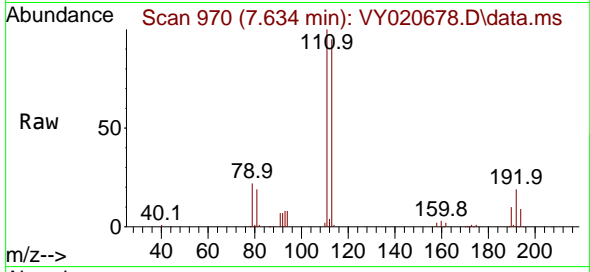
Tgt Ion: 114 Resp: 307691
 Ion Ratio Lower Upper
 114 100
 63 20.3 0.0 44.0
 88 15.7 0.0 32.8



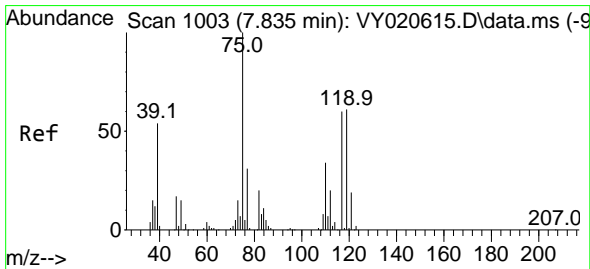
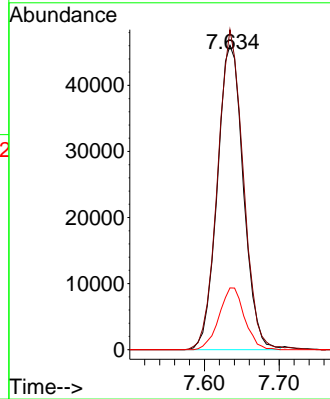
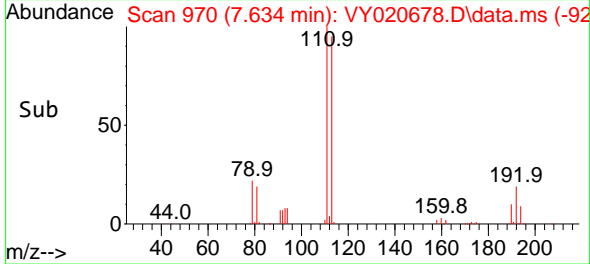


#35
 Dibromofluoromethane
 Concen: 51.475 ug/l
 RT: 7.634 min Scan# 91
 Delta R.T. 0.000 min
 Lab File: VY020678.D
 Acq: 20 Dec 2024 18:02

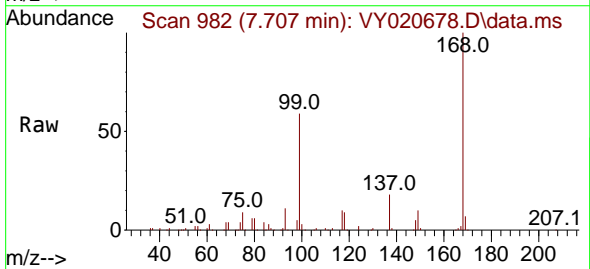
Instrument :
 MSVOA_Y
 ClientSampleId :



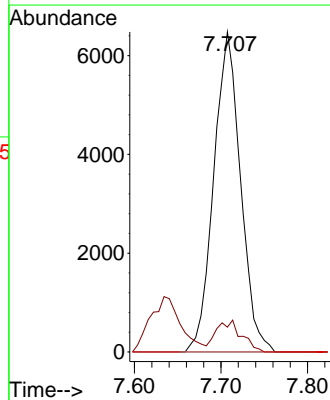
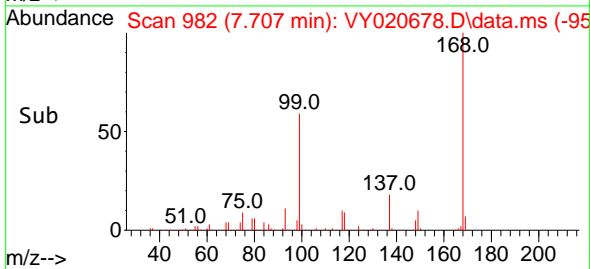
Tgt Ion:113 Resp: 111624
 Ion Ratio Lower Upper
 113 100
 111 103.6 82.9 124.3
 192 19.9 15.7 23.5

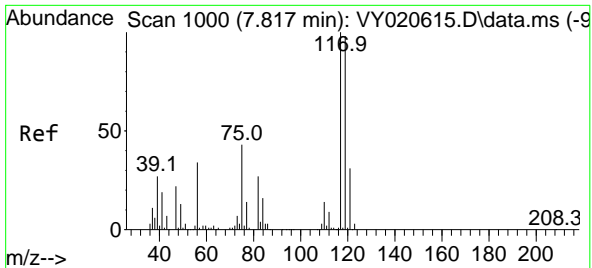


#36
 1,1-Dichloropropene
 Concen: 3.516 ug/l
 RT: 7.707 min Scan# 982
 Delta R.T. -0.128 min
 Lab File: VY020678.D
 Acq: 20 Dec 2024 18:02



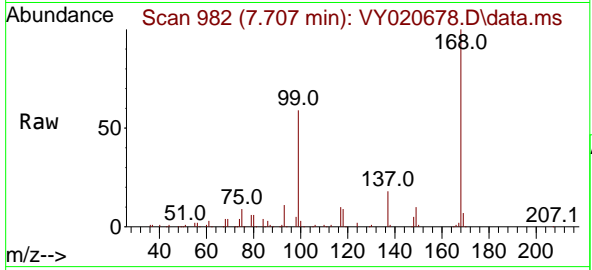
Tgt Ion: 75 Resp: 13904
 Ion Ratio Lower Upper
 75 100
 110 9.3 16.8 50.4#
 77 0.0 25.0 37.6#



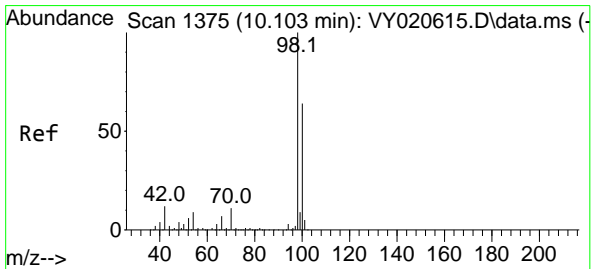
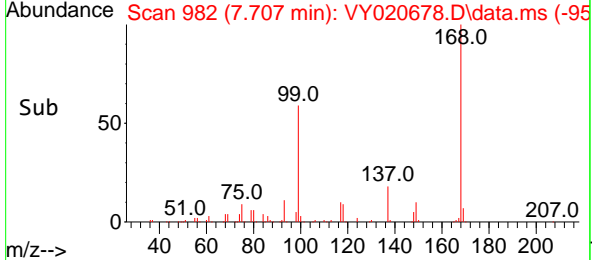
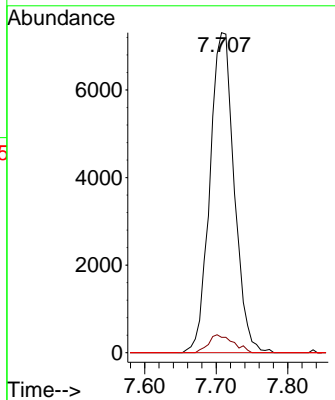


#38
 Carbon Tetrachloride
 Concen: 3.945 ug/l
 RT: 7.707 min Scan# 91
 Delta R.T. -0.109 min
 Lab File: VY020678.D
 Acq: 20 Dec 2024 18:02

Instrument :
 MSVOA_Y
 ClientSampleId :

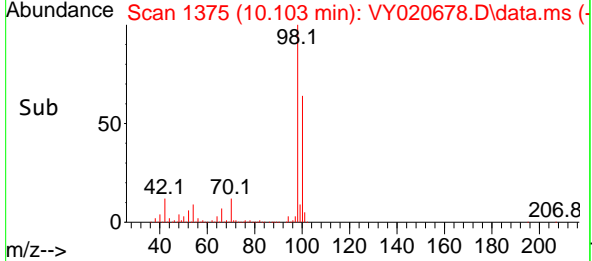
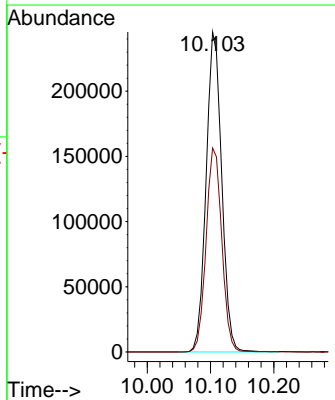
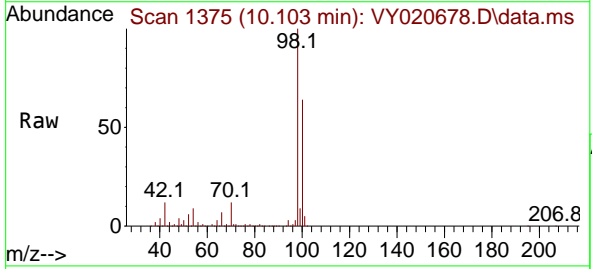


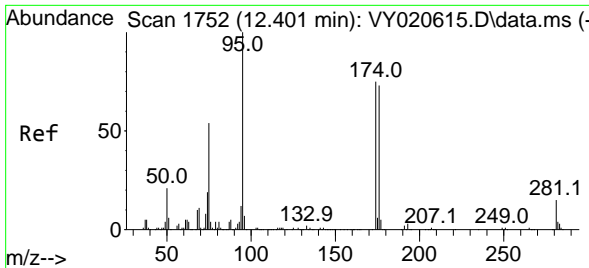
Tgt Ion:117 Resp: 17258
 Ion Ratio Lower Upper
 117 100
 119 4.8 78.3 117.5#
 121 0.0 25.1 37.7#



#50
 Toluene-d8
 Concen: 55.384 ug/l
 RT: 10.103 min Scan# 1375
 Delta R.T. 0.000 min
 Lab File: VY020678.D
 Acq: 20 Dec 2024 18:02

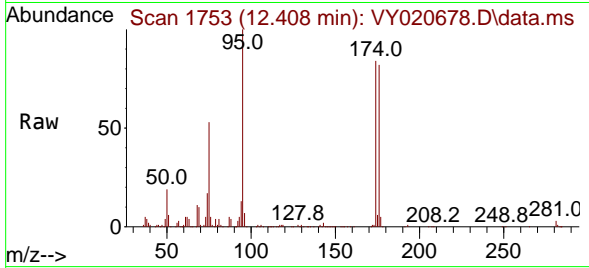
Tgt Ion: 98 Resp: 420376
 Ion Ratio Lower Upper
 98 100
 100 64.3 52.1 78.1





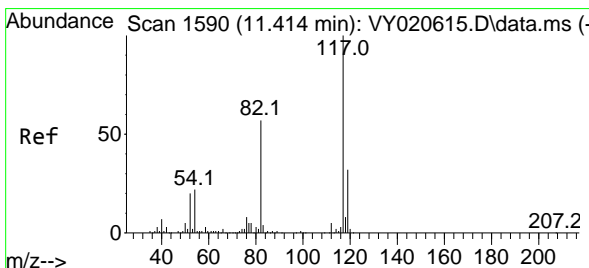
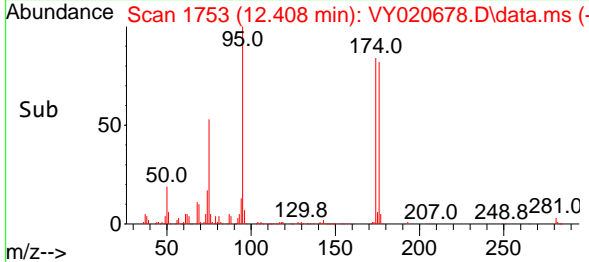
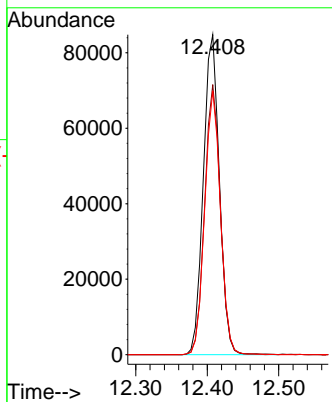
#62
 4-Bromofluorobenzene
 Concen: 44.578 ug/l
 RT: 12.408 min Scan# 1753
 Delta R.T. 0.006 min
 Lab File: VY020678.D
 Acq: 20 Dec 2024 18:02

Instrument : MSVOA_Y
 ClientSampleId :



Tgt Ion: 95 Resp: 132356

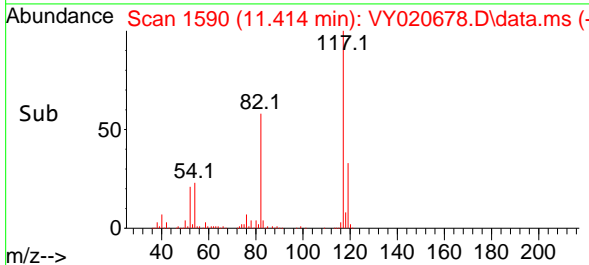
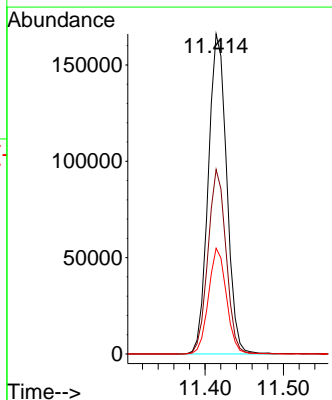
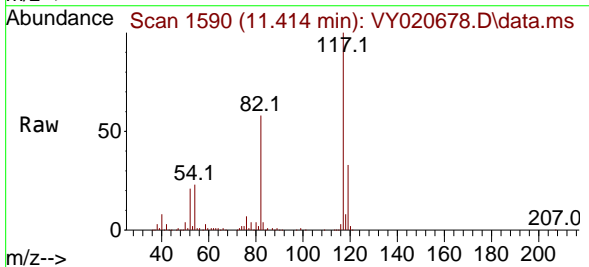
Ion	Ratio	Lower	Upper
95	100		
174	82.8	0.0	161.8
176	80.9	0.0	156.6

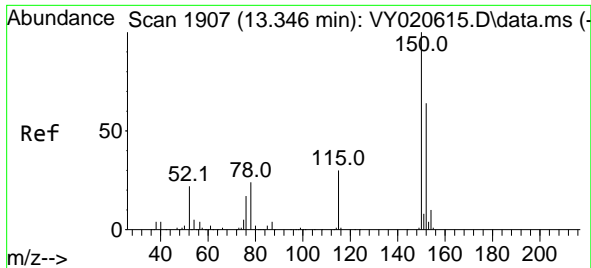


#63
 Chlorobenzene-d5
 Concen: 50.000 ug/l
 RT: 11.414 min Scan# 1590
 Delta R.T. 0.000 min
 Lab File: VY020678.D
 Acq: 20 Dec 2024 18:02

Tgt Ion: 117 Resp: 271047

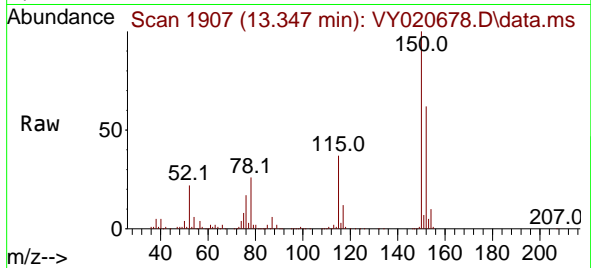
Ion	Ratio	Lower	Upper
117	100		
82	57.6	45.8	68.6
119	33.0	25.3	37.9



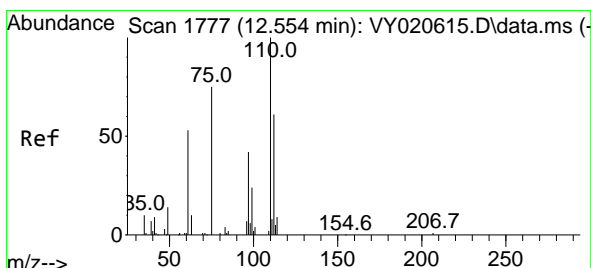
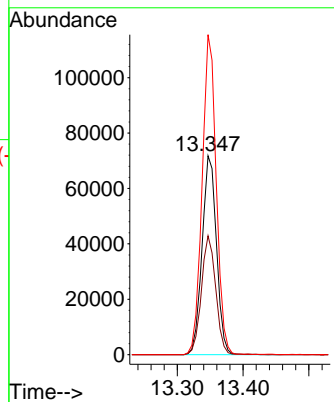
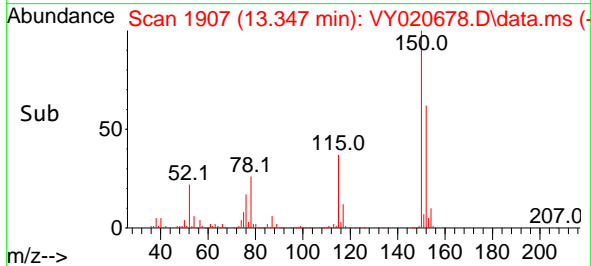


#72
 1,4-Dichlorobenzene-d4
 Concen: 50.000 ug/l
 RT: 13.347 min Scan# 1
 Delta R.T. 0.000 min
 Lab File: VY020678.D
 Acq: 20 Dec 2024 18:02

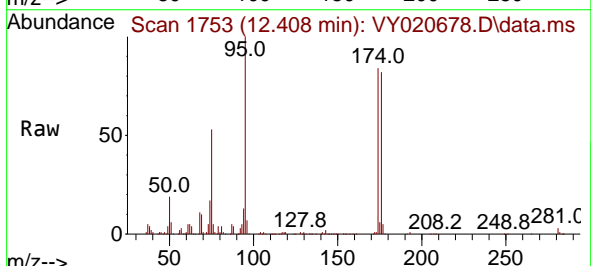
Instrument :
 MSVOA_Y
 ClientSampleId :



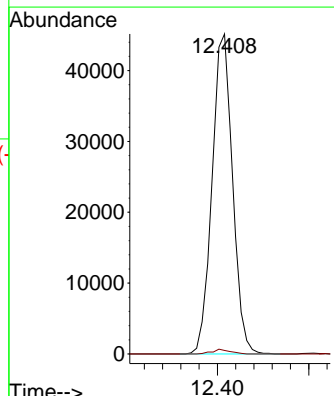
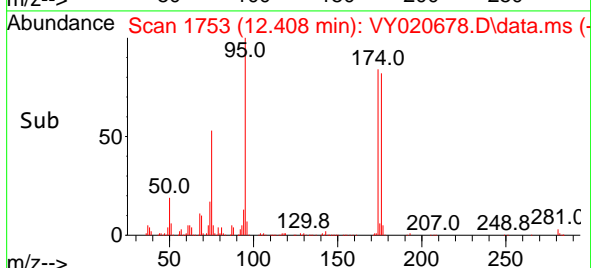
Tgt Ion:152 Resp: 109147
 Ion Ratio Lower Upper
 152 100
 115 59.3 30.2 90.6
 150 157.6 0.0 355.4

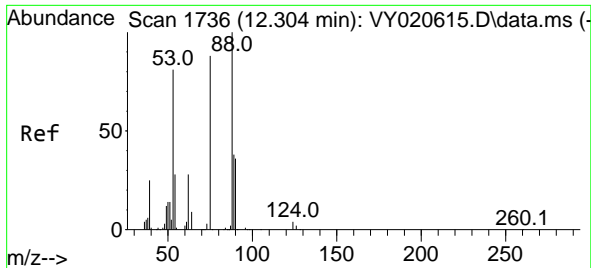


#76
 1,2,3-Trichloropropane
 Concen: 61.926 ug/l
 RT: 12.408 min Scan# 1753
 Delta R.T. -0.146 min
 Lab File: VY020678.D
 Acq: 20 Dec 2024 18:02



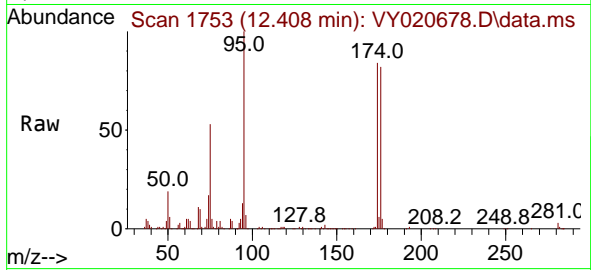
Tgt Ion: 75 Resp: 70213
 Ion Ratio Lower Upper
 75 100
 77 1.3 0.0 0.0#





#81
 trans-1,4-Dichloro-2-butene
 Concen: 129.985 ug/l
 RT: 12.408 min Scan# 1
 Delta R.T. 0.104 min
 Lab File: VY020678.D
 Acq: 20 Dec 2024 18:02

Instrument :
 MSVOA_Y
 ClientSampleId :



Tgt Ion: 75 Resp: 70213
 Ion Ratio Lower Upper
 75 100
 53 0.0 75.4 113.2#
 89 0.0 37.0 55.4#

