

Data Path : Z:\VOASRV\HPCHEM1\MSVOA Y\DATA\VY122319\
 Data File : VY001030.D
 Acq On : 23 Dec 2019 15:52
 Operator : SY/MD
 Sample : K6399-01
 Misc : 5.08G/5ML/MSVOA Y/SOIL
 ALS Vial : 17 Sample Multiplier: 1

Instrument :
 MSVOA_Y
ClientSampleId :
 161-CHURCH-ST-NORTH-HALEDO

Quant Time: Dec 24 05:29:55 2019
 Quant Method : Z:\VOASRV\HPCHEM1\MSVOA_Y\METHODS\82Y122319S.M
 Quant Title : SW846 8260
 QLast Update : Mon Dec 23 12:07:44 2019
 Response via : Initial Calibration

Internal Standards	R.T.	QIon	Response	Conc	Units	Dev(Min)
1) Pentafluorobenzene	7.80	168	26406	50.00	ug/l	0.00
34) 1,4-Difluorobenzene	8.69	114	44946	50.00	ug/l	0.00
63) Chlorobenzene-d5	11.49	117	34061	50.00	ug/l	0.00
72) 1,4-Dichlorobenzene-d4	13.42	152	13049	50.00	ug/l	0.00

System Monitoring Compounds	R.T.	QIon	Response	Conc	Units	Dev(Min)
33) 1,2-Dichloroethane-d4	8.15	65	10407	39.96	ug/l	0.00
Spiked Amount				50.000		
Recovery						79.92%
35) Dibromofluoromethane	7.73	113	10728	40.53	ug/l	0.00
Spiked Amount				50.000		
Recovery						81.06%
50) Toluene-d8	10.17	98	51631	49.92	ug/l	0.00
Spiked Amount				50.000		
Recovery						99.84%
62) 4-Bromofluorobenzene	12.48	95	13318	35.22	ug/l	0.00
Spiked Amount				50.000		
Recovery						70.44%

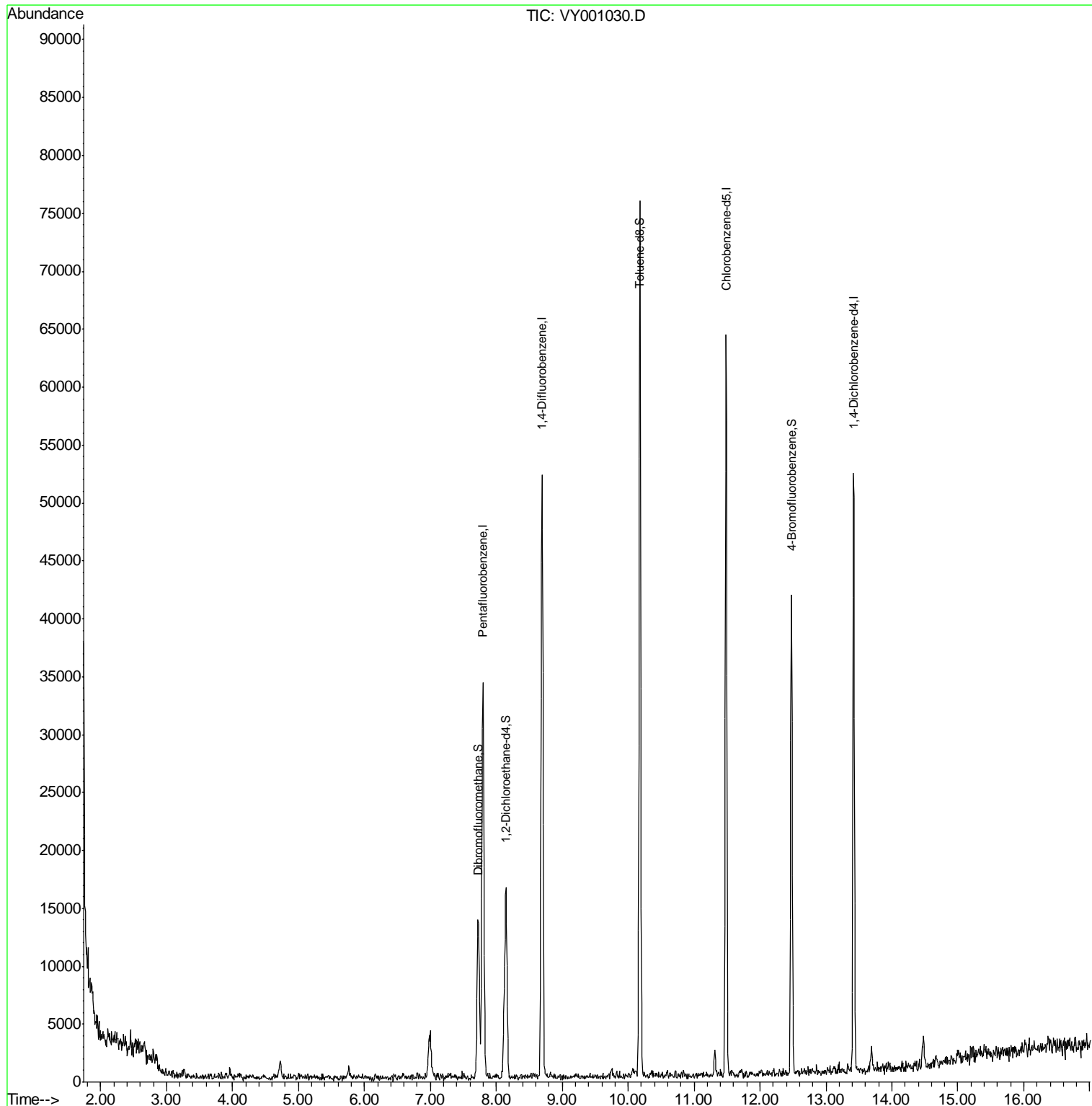
Target Compounds Qvalue

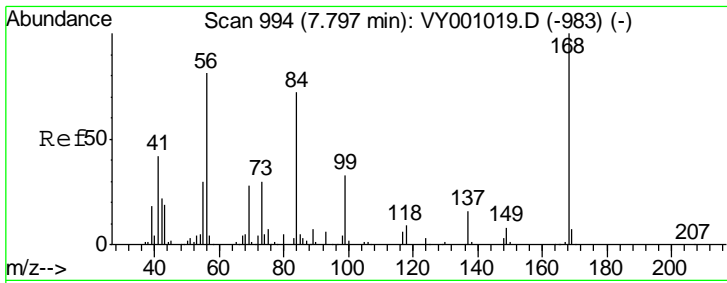
(#) = qualifier out of range (m) = manual integration (+) = signals summed

Data Path : Z:\VOASRV\HPCHEM1\MSVOA Y\DATA\VY122319\
 Data File : VY001030.D
 Acq On : 23 Dec 2019 15:52
 Operator : SY/MD
 Sample : K6399-01
 Misc : 5.08G/5ML/MSVOA Y/SOIL
 ALS Vial : 17 Sample Multiplier: 1

Instrument :
 MSVOA_Y
ClientSampleId :
 161-CHURCH-ST-NORTH-HALEDO

Quant Time: Dec 24 05:29:55 2019
 Quant Method : Z:\VOASRV\HPCHEM1\MSVOA_Y\METHODS\82Y122319S.M
 Quant Title : SW846 8260
 QLast Update : Mon Dec 23 12:07:44 2019
 Response via : Initial Calibration

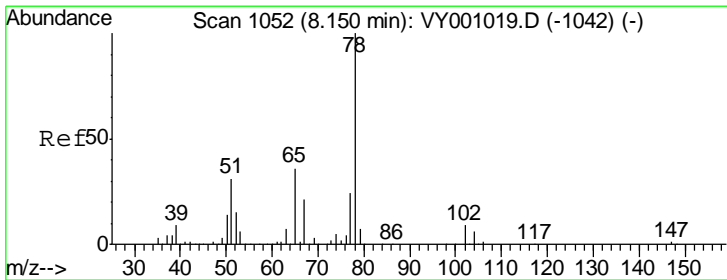
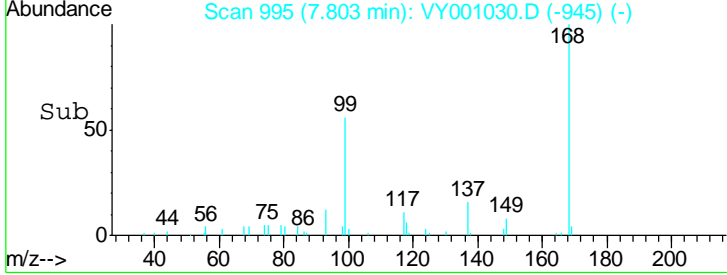
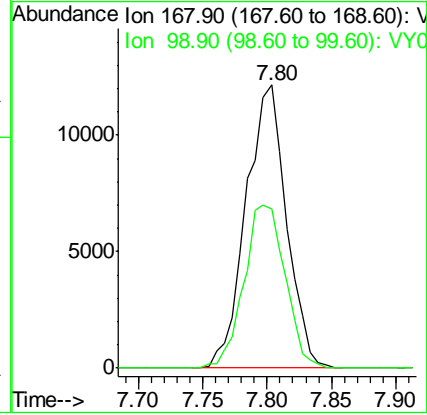
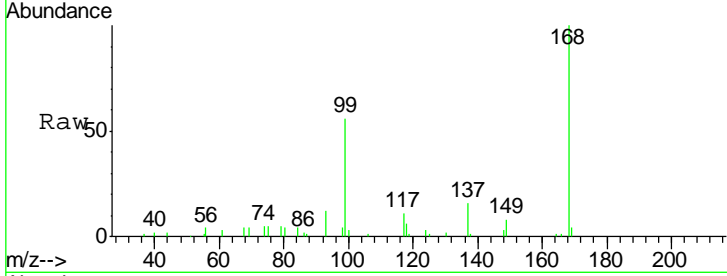




#1
 Pentafluorobenzene
 Concen: 50.000 ug/l
 RT: 7.80 min Scan# 995
 Delta R.T. 0.01 min
 Lab File: VY001030.D
 Acq: 23 Dec 2019 15:52

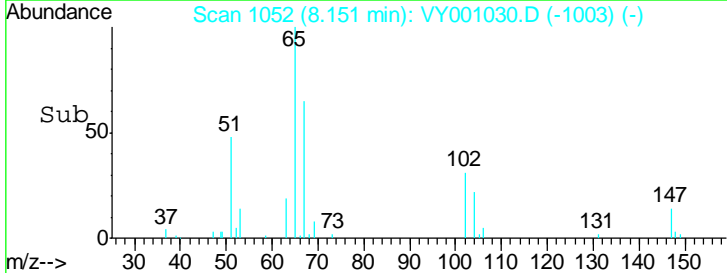
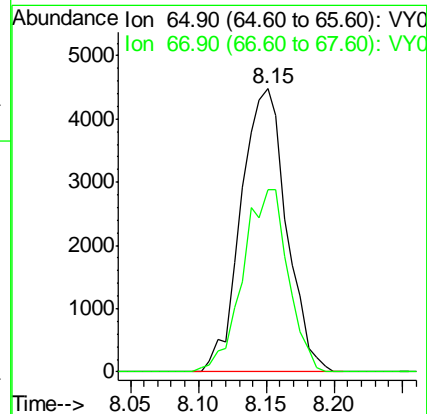
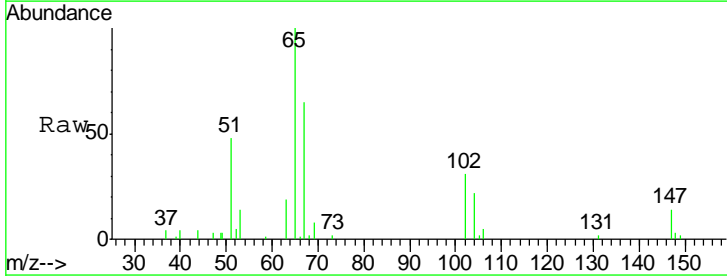
Instrument :
 MSVOA_Y
ClientSampled :
 161-CHURCH-ST-NORTH-HALEDO

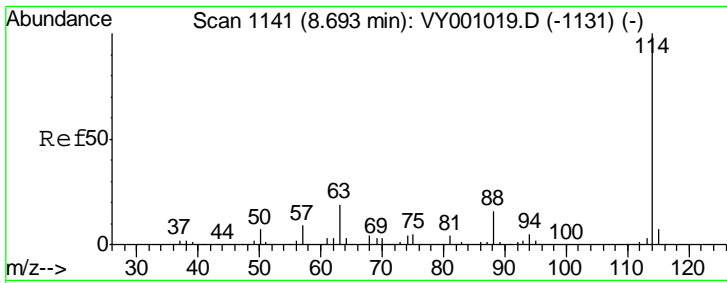
Tgt Ion: 168 Resp: 26406
 Ion Ratio Lower Upper
 168 100
 99 56.2 44.0 66.0



#33
 1,2-Dichloroethane-d4
 Concen: 39.960 ug/l
 RT: 8.15 min Scan# 1052
 Delta R.T. 0.00 min
 Lab File: VY001030.D
 Acq: 23 Dec 2019 15:52

Tgt Ion: 65 Resp: 10407
 Ion Ratio Lower Upper
 65 100
 67 64.1 0.0 112.8

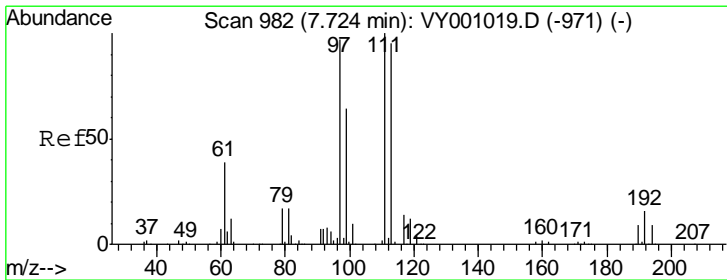
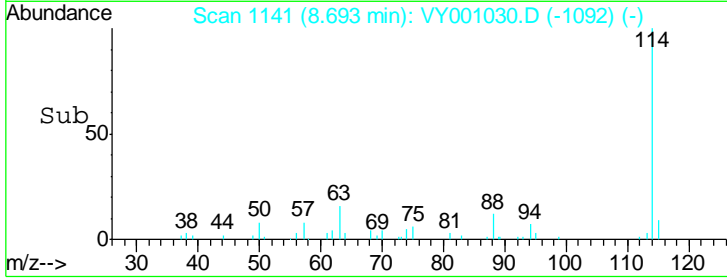
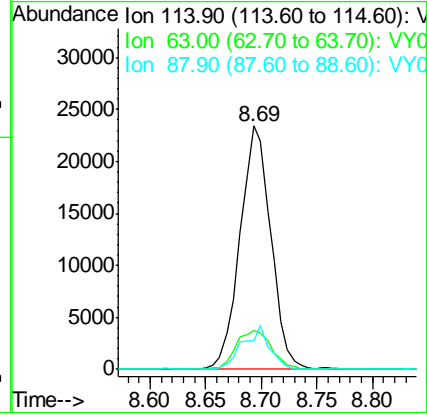
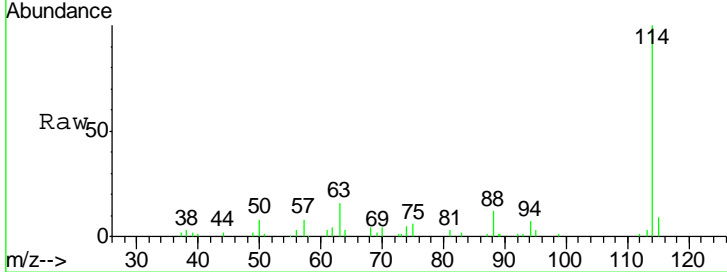




#34
 1,4-Difluorobenzene
 Concen: 50.000 ug/l
 RT: 8.69 min Scan# 1141
 Delta R.T. 0.00 min
 Lab File: VY001030.D
 Acq: 23 Dec 2019 15:52

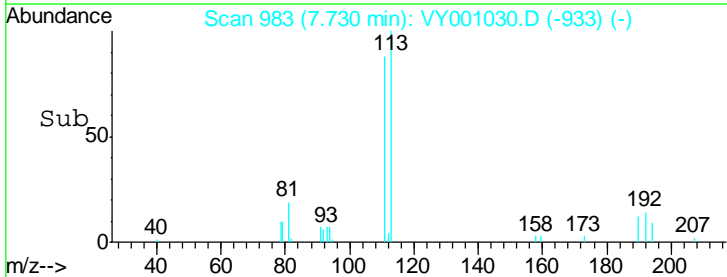
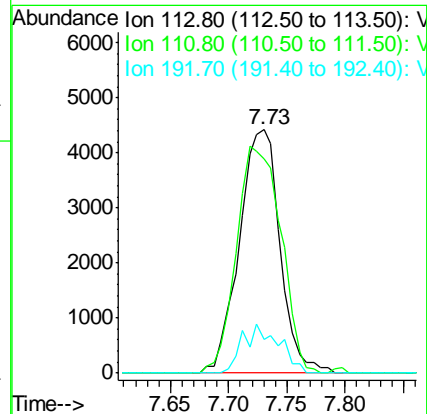
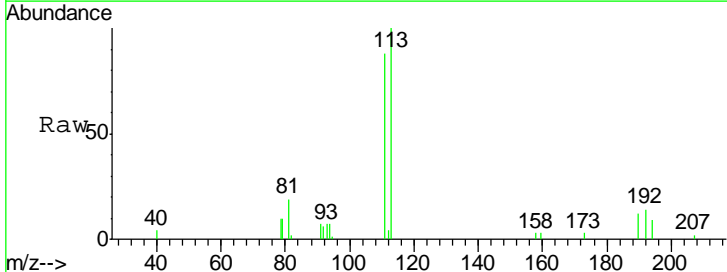
Instrument :
 MSVOA_Y
 ClientSampleId :
 161-CHURCH-ST-NORTH-HALEDO

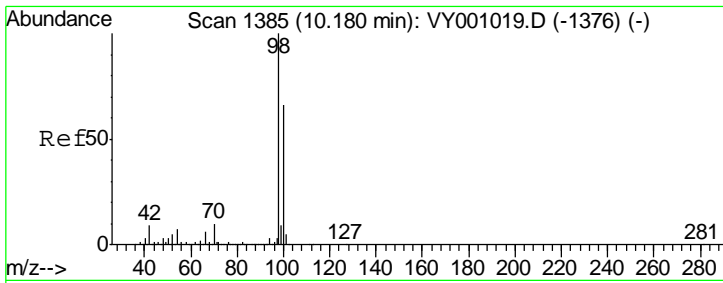
Tgt Ion	Resp	Lower	Upper
114	100		
63	15.7	0.0	37.0
88	11.6	0.0	32.0



#35
 Dibromofluoromethane
 Concen: 40.534 ug/l
 RT: 7.73 min Scan# 983
 Delta R.T. 0.01 min
 Lab File: VY001030.D
 Acq: 23 Dec 2019 15:52

Tgt Ion	Resp	Lower	Upper
113	100		
111	101.9	83.0	124.4
192	18.0	14.6	21.8

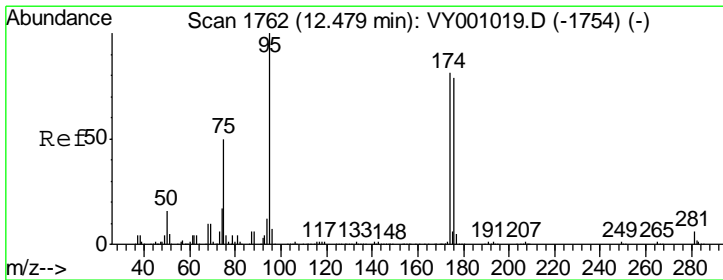
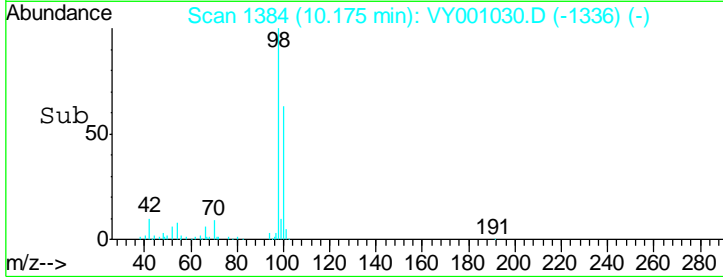
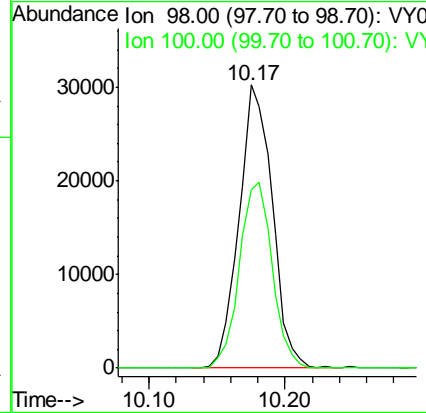
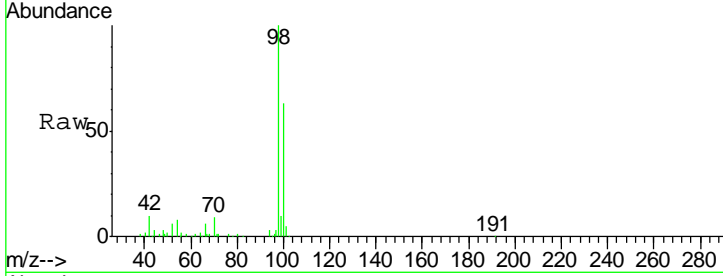




#50
 Toluene-d8
 Concen: 49.918 ug/l
 RT: 10.17 min Scan# 1384
 Delta R.T. -0.01 min
 Lab File: VY001030.D
 Acq: 23 Dec 2019 15:52

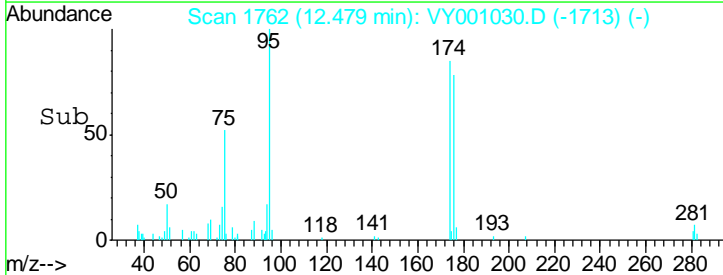
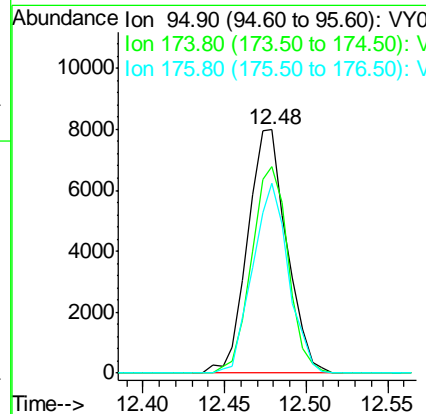
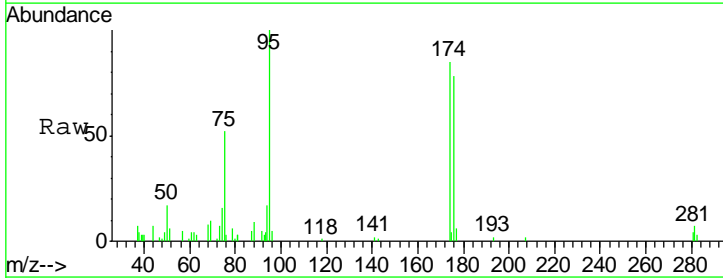
Instrument :
 MSVOA_Y
 ClientSampled :
 161-CHURCH-ST-NORTH-HALEDO

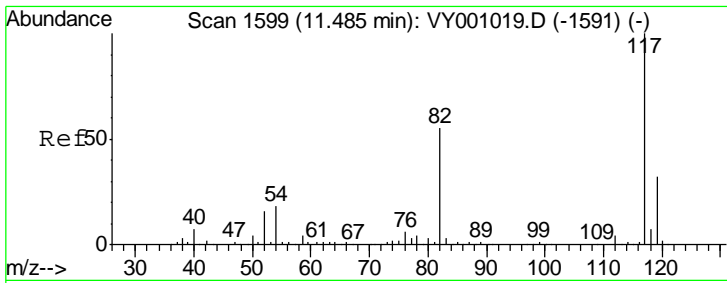
Tgt Ion: 98 Resp: 51631
 Ion Ratio Lower Upper
 98 100
 100 64.7 53.0 79.4



#62
 4-Bromofluorobenzene
 Concen: 35.218 ug/l
 RT: 12.48 min Scan# 1762
 Delta R.T. 0.00 min
 Lab File: VY001030.D
 Acq: 23 Dec 2019 15:52

Tgt Ion: 95 Resp: 13318
 Ion Ratio Lower Upper
 95 100
 174 79.1 0.0 156.4
 176 71.6 0.0 155.0

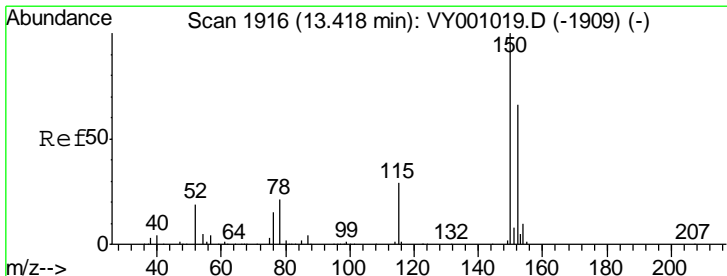
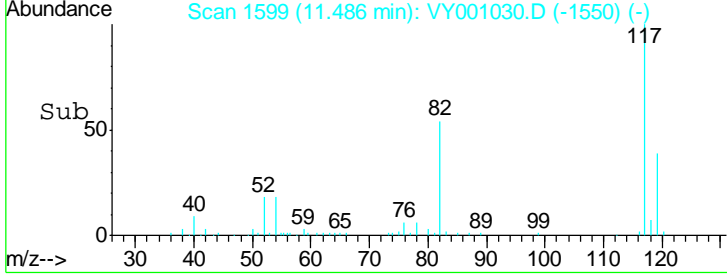
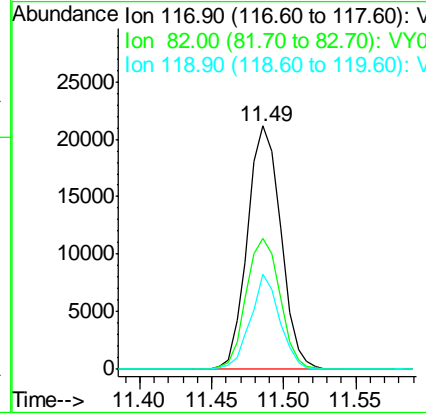
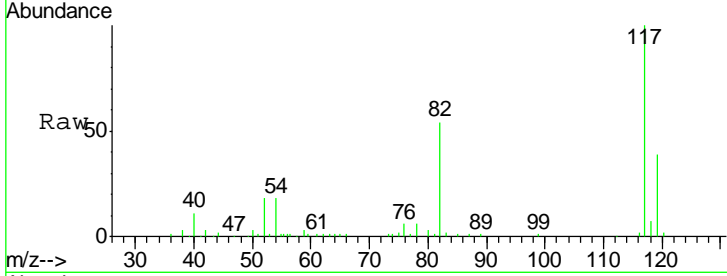




#63
 Chlorobenzene-d5
 Concen: 50.000 ug/l
 RT: 11.49 min Scan# 1599
 Delta R.T. 0.00 min
 Lab File: VY001030.D
 Acq: 23 Dec 2019 15:52

Instrument :
 MSVOA_Y
 ClientSampled :
 161-CHURCH-ST-NORTH-HALEDO

Tgt Ion	Resp	Lower	Upper
117	34061		
82	53.6	43.8	65.8
119	38.9	25.8	38.6#



#72
 1,4-Dichlorobenzene-d4
 Concen: 50.000 ug/l
 RT: 13.42 min Scan# 1917
 Delta R.T. 0.01 min
 Lab File: VY001030.D
 Acq: 23 Dec 2019 15:52

Tgt Ion	Resp	Lower	Upper
152	13049		
115	57.4	29.8	89.3
150	152.6	0.0	352.6

