

Data Path : Z:\voasrv\HPCHEM1\MSVOA_Y\Data\VY122322\
 Data File : VY012001.D
 Acq On : 23 Dec 2022 16:35
 Operator : KP/MD
 Sample : N6178-03
 Misc : 5.06g/5.0mL/MSVOA_Y/SOIL
 ALS Vial : 17 Sample Multiplier: 1

Instrument :
 MSVOA_Y
 ClientSampleId :
 COMP-2

Integration Parameters: RTEINT.P

Integrator: RTE
 Smoothing : ON Filtering: 5
 Sampling : 1 Min Area: 3 % of largest Peak
 Start Thrs: 0.2 Max Peaks: 100
 Stop Thrs : 0 Peak Location: TOP

If leading or trailing edge < 100 prefer < Baseline drop else tangent >
 Peak separation: 5

Method : Z:\voasrv\HPCHEM1\MSVOA_Y\methods\82Y122022S.M
 Title : SW846 8260

Signal : TIC: VY012001.D\data.ms

peak #	R.T. min	first scan	max scan	last scan	PK TY	peak height	corr. area	corr. % max.	% of total
1	4.716	463	475	486	rBV3	11659	36321	3.39%	0.639%
2	5.753	634	645	656	rBV2	4690	14570	1.36%	0.256%
3	7.716	955	967	973	rBV	153618	364057	33.98%	6.409%
4	7.789	973	979	993	rVB	246796	557763	52.06%	9.819%
5	8.136	1027	1036	1050	rBV	143450	320406	29.90%	5.640%
6	8.691	1118	1127	1138	rBV	397908	770853	71.95%	13.570%
7	10.179	1361	1371	1385	rBV	633209	1071440	100.00%	18.862%
8	10.575	1429	1436	1444	rVB	14989	27416	2.56%	0.483%
9	11.489	1579	1586	1596	rBV	577773	925282	86.36%	16.289%
10	12.483	1742	1749	1762	rBV2	465571	728564	68.00%	12.826%
11	13.428	1897	1904	1913	rBV	545312	816420	76.20%	14.372%
12	13.965	1984	1992	1999	rBV2	28495	47371	4.42%	0.834%

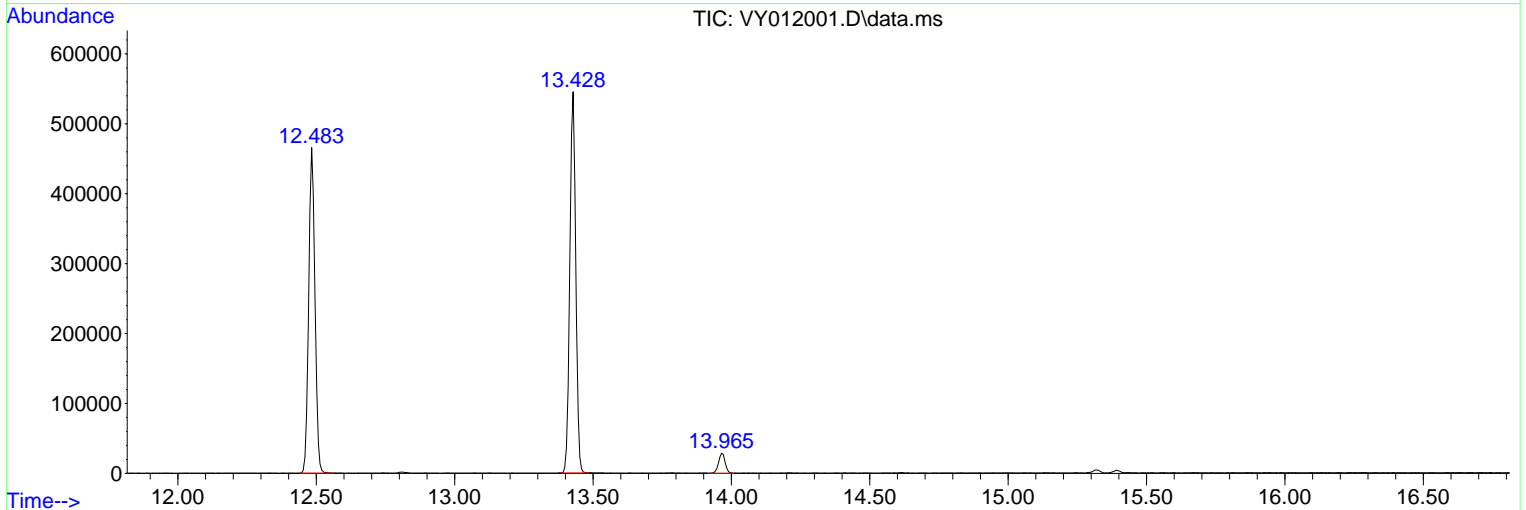
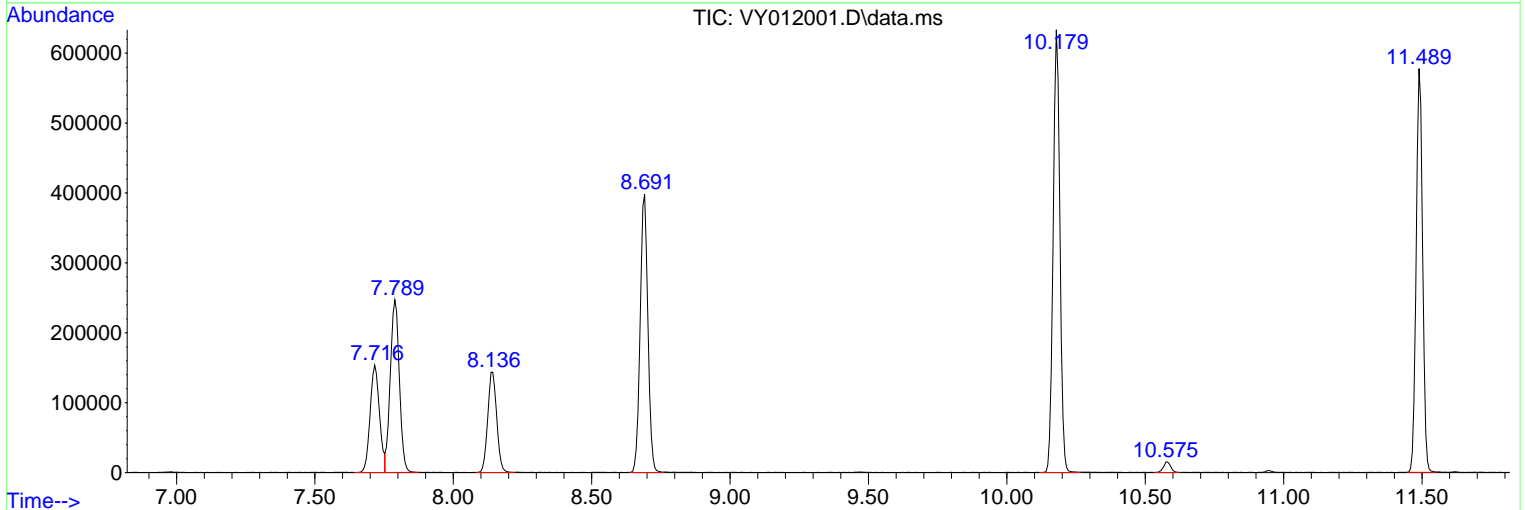
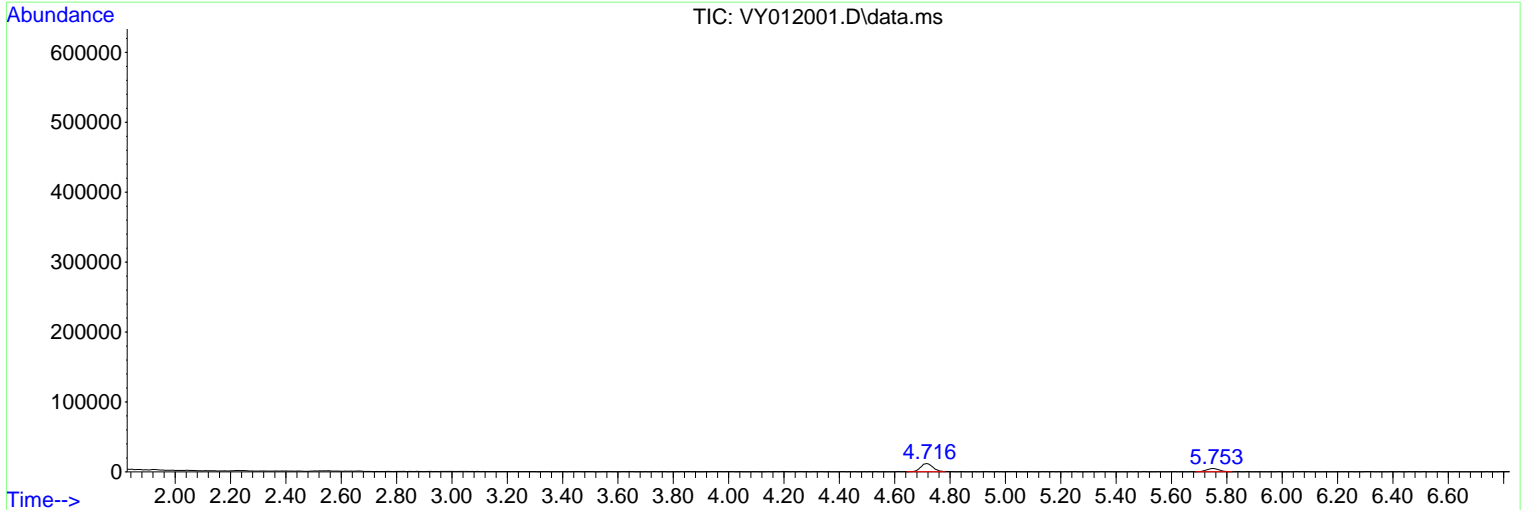
Sum of corrected areas: 5680463

Data Path : Z:\voasrv\HPCHEM1\MSVOA_Y\Data\VY122322\
 Data File : VY012001.D
 Acq On : 23 Dec 2022 16:35
 Operator : KP/MD
 Sample : N6178-03
 Misc : 5.06g/5.0mL/MSVOA_Y/SOIL
 ALS Vial : 17 Sample Multiplier: 1

Instrument :
 MSVOA_Y
ClientSampleId :
 COMP-2

Quant Method : Z:\voasrv\HPCHEM1\MSVOA_Y\methods\82Y122022S.M
 Quant Title : SW846 8260

TIC Library : C:\Database\NIST20.L
 TIC Integration Parameters: LSCINT.P



Library Search Compound Report

Data Path : Z:\voasrv\HPCHEM1\MSVOA_Y\Data\VY122322\
Data File : VY012001.D
Acq On : 23 Dec 2022 16:35
Operator : KP/MD
Sample : N6178-03
Misc : 5.06g/5.0mL/MSVOA_Y/SOIL
ALS Vial : 17 Sample Multiplier: 1

Instrument :
MSVOA_Y
ClientSampleId :
COMP-2

Quant Method : Z:\voasrv\HPCHEM1\MSVOA_Y\methods\82Y122022S.M
Quant Title : SW846 8260

TIC Library : C:\Database\NIST20.L
TIC Integration Parameters: LSCINT.P

No Library Search Compounds Detected

Data Path : Z:\voasrv\HPCHEM1\MSVOA_Y\Data\VY122322\
Data File : VY012001.D
Acq On : 23 Dec 2022 16:35
Operator : KP/MD
Sample : N6178-03
Misc : 5.06g/5.0mL/MSVOA_Y/SOIL
ALS Vial : 17 Sample Multiplier: 1

Instrument :
MSVOA_Y
ClientSampleId :
COMP-2

Quant Method : Z:\voasrv\HPCHEM1\MSVOA_Y\methods\82Y122022S.M
Quant Title : SW846 8260

TIC Library : C:\Database\NIST0.L
TIC Integration Parameters: LSCINT.P

TIC Top Hit name	RT	EstConc	Units	Response	--Internal Standard--		
					#	RT	Resp Conc
