

Data Path : Z:\VOASRV\HPCHEM1\MSVOA_Y\DATA\VY122419\
 Data File : VY001057.D
 Acq On : 24 Dec 2019 18:36
 Operator : SY/MD
 Sample : K6414-04
 Misc : 9.79G/5ML/MSVOA_Y/SOIL
 ALS Vial : 23 Sample Multiplier: 1

Instrument :
 MSVOA_Y
 ClientSampleId :
 K183-SB-04

Quant Time: Dec 25 01:40:15 2019
 Quant Method : Z:\VOASRV\HPCHEM1\MSVOA_Y\METHODS\82Y122319S.M
 Quant Title : SW846 8260
 QLast Update : Mon Dec 23 12:07:44 2019
 Response via : Initial Calibration

Internal Standards	R.T.	QIon	Response	Conc	Units	Dev(Min)
1) Pentafluorobenzene	7.80	168	234871	50.00	ug/l	0.00
34) 1,4-Difluorobenzene	8.69	114	443581	50.00	ug/l	0.00
63) Chlorobenzene-d5	11.49	117	401437	50.00	ug/l	0.00
72) 1,4-Dichlorobenzene-d4	13.42	152	174438	50.00	ug/l	0.00

System Monitoring Compounds

33) 1,2-Dichloroethane-d4	8.15	65	129833	56.05	ug/l	0.00
Spiked Amount				50.000		
			Recovery	=	112.10%	
35) Dibromofluoromethane	7.73	113	130536	49.97	ug/l	0.00
Spiked Amount				50.000		
			Recovery	=	99.94%	
50) Toluene-d8	10.18	98	525776	51.51	ug/l	0.00
Spiked Amount				50.000		
			Recovery	=	103.02%	
62) 4-Bromofluorobenzene	12.48	95	170739	45.75	ug/l	0.00
Spiked Amount				50.000		
			Recovery	=	91.50%	

Target Compounds

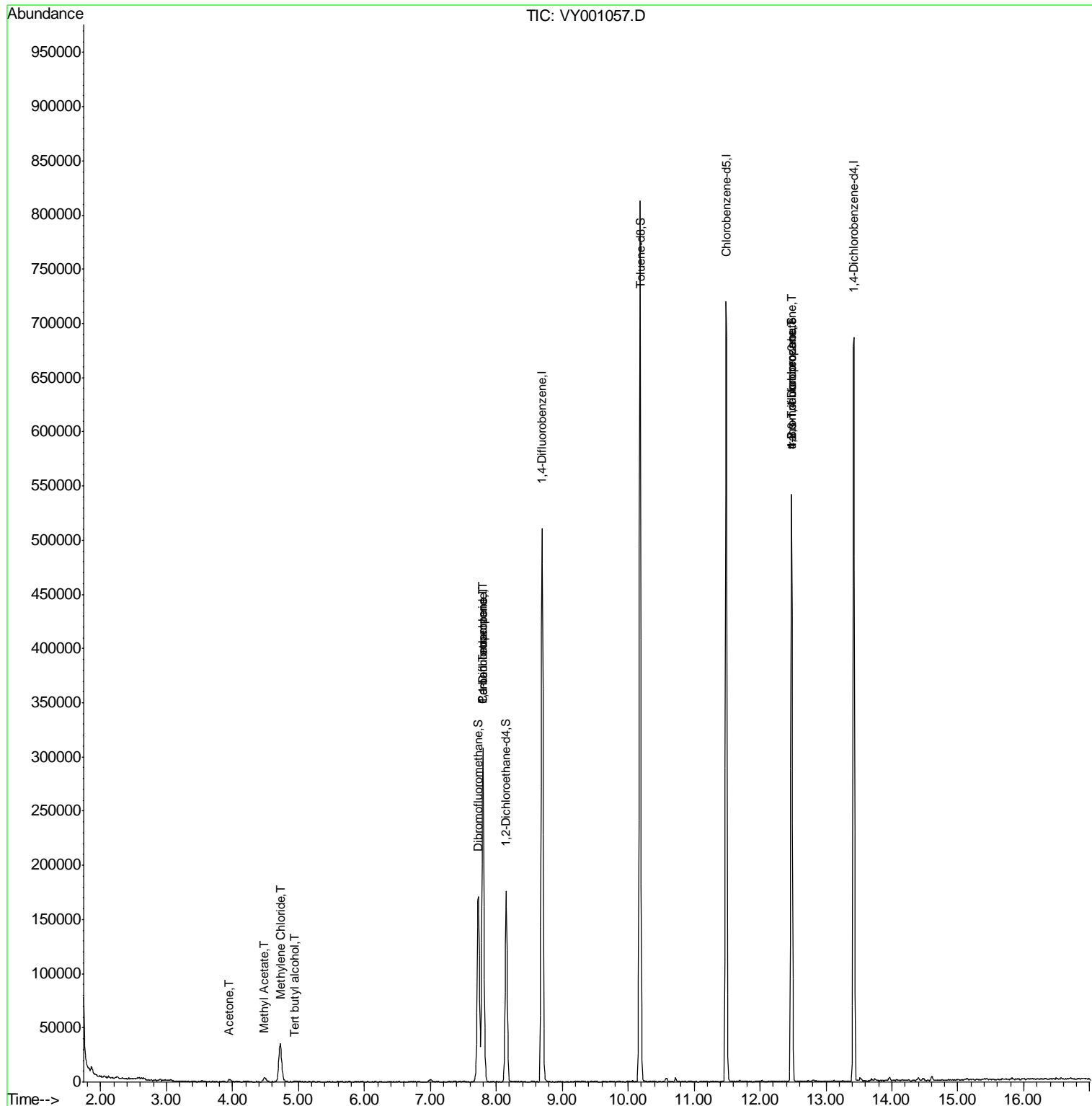
						Qvalue
11) Tert butyl alcohol	4.95	59	463	1.818	ug/l #	74
16) Acetone	3.94	43	1646	3.084	ug/l	94
18) Methyl Acetate	4.48	43	6987	3.413	ug/l	99
20) Methylene Chloride	4.72	84	27742	8.832	ug/l	95
36) 1,1-Dichloropropene	7.80	75	19359	4.575	ug/l #	49
38) Carbon Tetrachloride	7.80	117	23825	6.426	ug/l #	17
76) 1,2,3-Trichloropropane	12.48	75	84201	39.155	ug/l #	100
81) trans-1,4-Dichloro-2-buten	12.48	75	84201	83.508	ug/l #	19

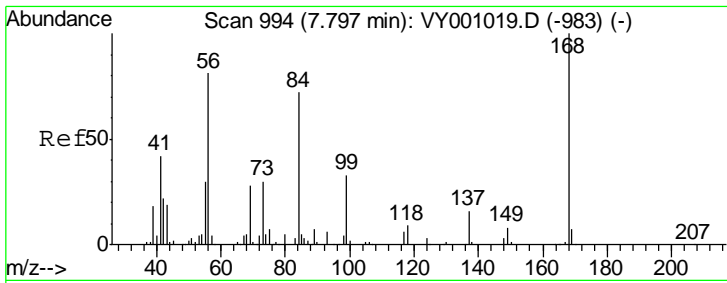
(#) = qualifier out of range (m) = manual integration (+) = signals summed

Data Path : Z:\VOASRV\HPCHEM1\MSVOA_Y\DATA\VY122419\
 Data File : VY001057.D
 Acq On : 24 Dec 2019 18:36
 Operator : SY/MD
 Sample : K6414-04
 Misc : 9.79G/5ML/MSVOA_Y/SOIL
 ALS Vial : 23 Sample Multiplier: 1

Instrument :
 MSVOA_Y
 Client Sampled :
 K183-SB-04

Quant Time: Dec 25 01:40:15 2019
 Quant Method : Z:\VOASRV\HPCHEM1\MSVOA_Y\METHODS\82Y122319S.M
 Quant Title : SW846 8260
 QLast Update : Mon Dec 23 12:07:44 2019
 Response via : Initial Calibration

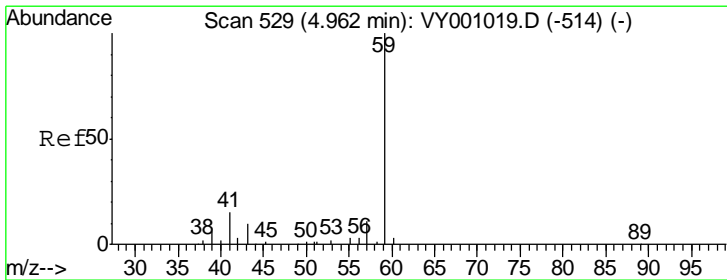
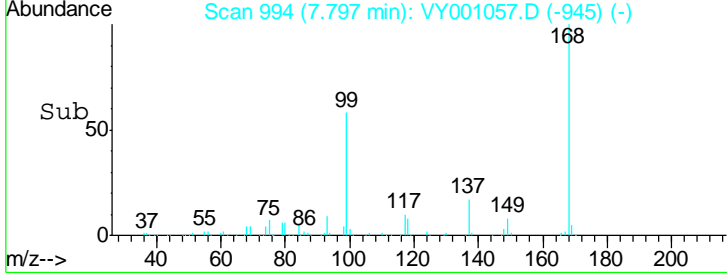
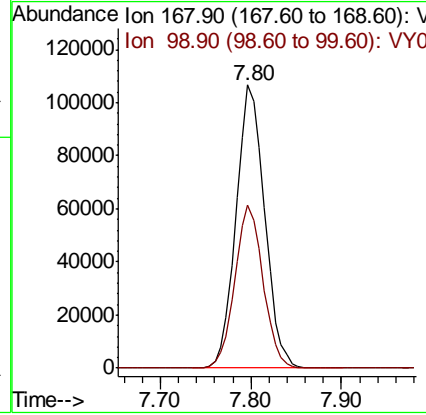
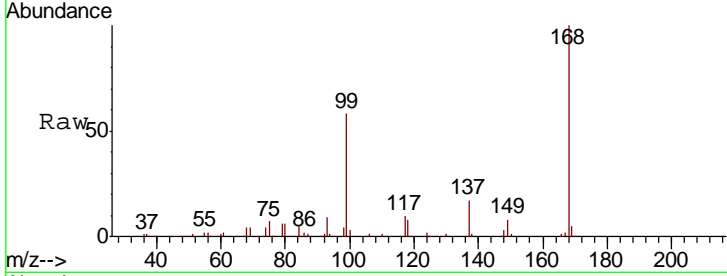




#1
 Pentafluorobenzene
 Concen: 50.000 ug/l
 RT: 7.80 min Scan# 994
 Delta R.T. 0.00 min
 Lab File: VY001057.D
 Acq: 24 Dec 2019 18:36

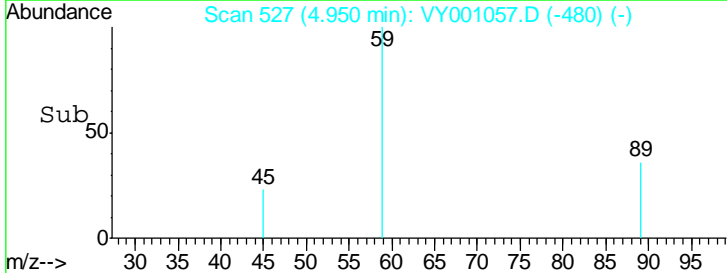
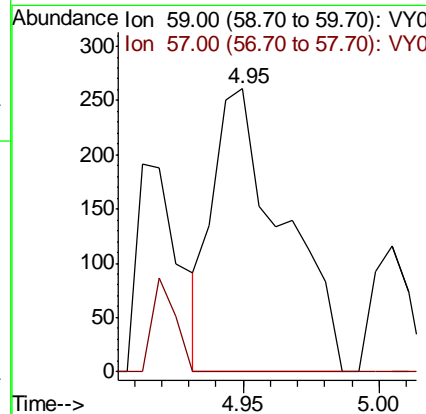
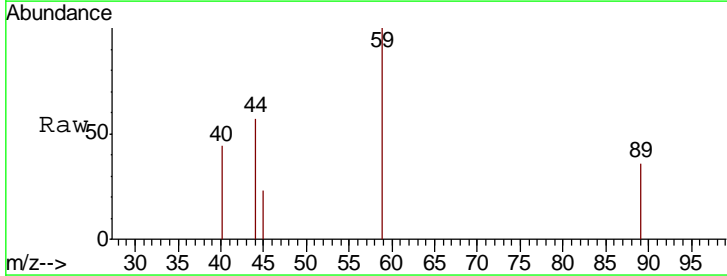
Instrument :
 MSVOA_Y
 ClientSampleId :
 K183-SB-04

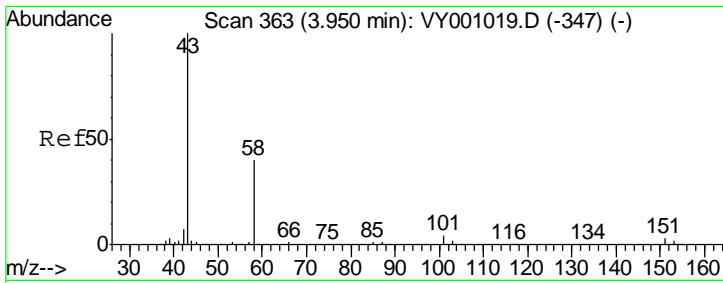
Tgt Ion: 168 Resp: 234871
 Ion Ratio Lower Upper
 168 100
 99 57.5 44.0 66.0



#11
 Tert butyl alcohol
 Concen: 1.818 ug/l
 RT: 4.95 min Scan# 527
 Delta R.T. -0.01 min
 Lab File: VY001057.D
 Acq: 24 Dec 2019 18:36

Tgt Ion: 59 Resp: 463
 Ion Ratio Lower Upper
 59 100
 57 0.0 7.8 11.6#

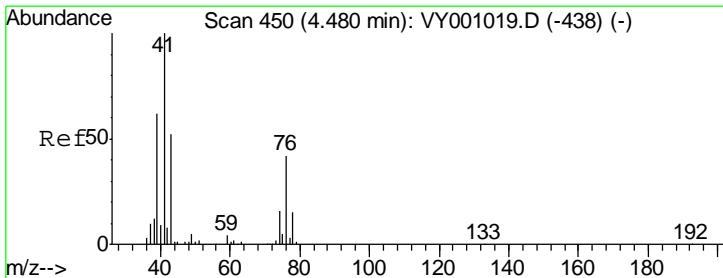
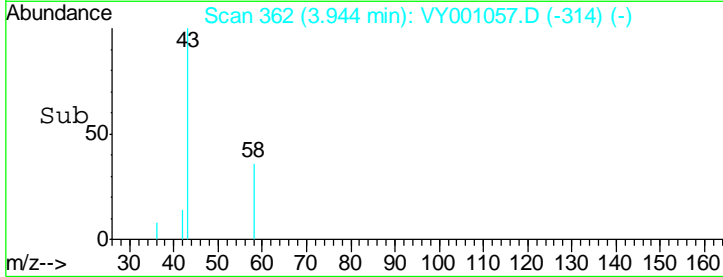
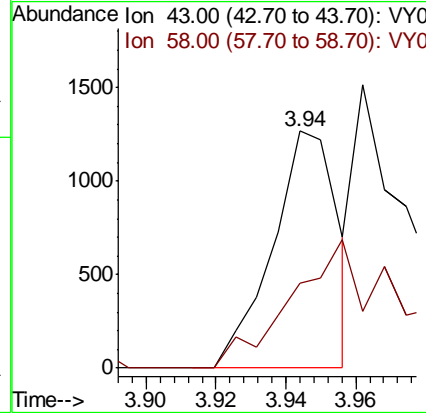
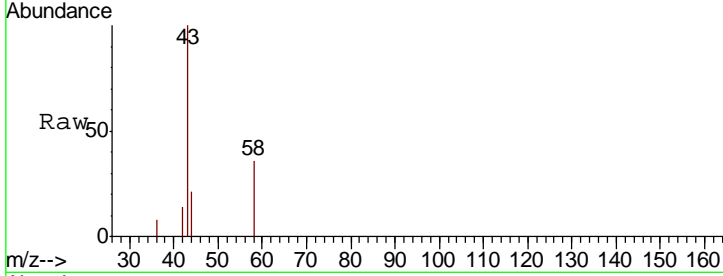




#16
 Acetone
 Concen: 3.084 ug/l
 RT: 3.94 min Scan# 362
 Delta R.T. -0.01 min
 Lab File: VY001057.D
 Acq: 24 Dec 2019 18:36

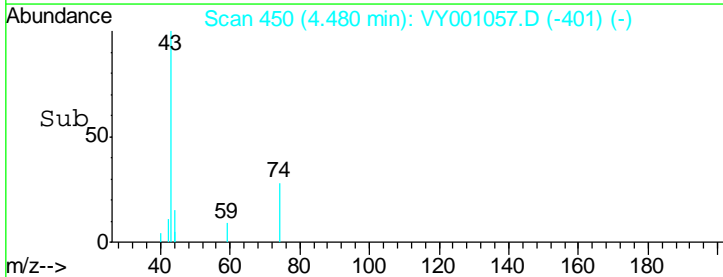
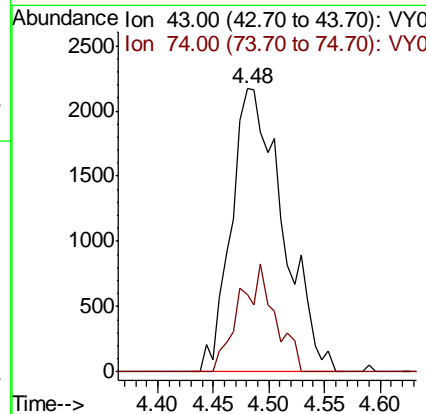
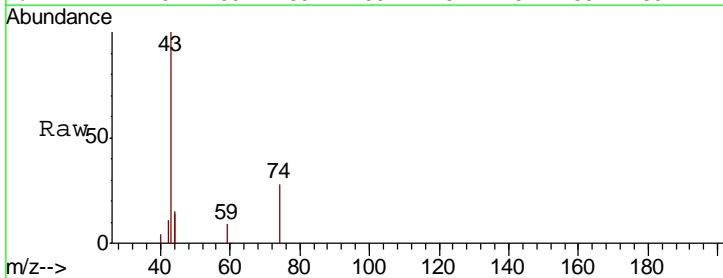
Instrument : MSVOA_Y
 ClientSampled : K183-SB-04

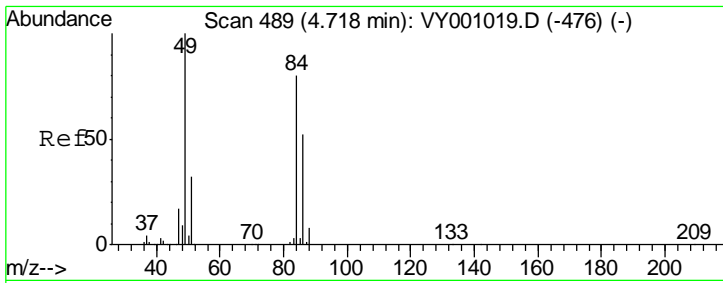
Tgt Ion: 43 Resp: 1646
 Ion Ratio Lower Upper
 43 100
 58 36.1 32.1 48.1



#18
 Methyl Acetate
 Concen: 3.413 ug/l
 RT: 4.48 min Scan# 450
 Delta R.T. 0.00 min
 Lab File: VY001057.D
 Acq: 24 Dec 2019 18:36

Tgt Ion: 43 Resp: 6987
 Ion Ratio Lower Upper
 43 100
 74 26.3 20.7 31.1

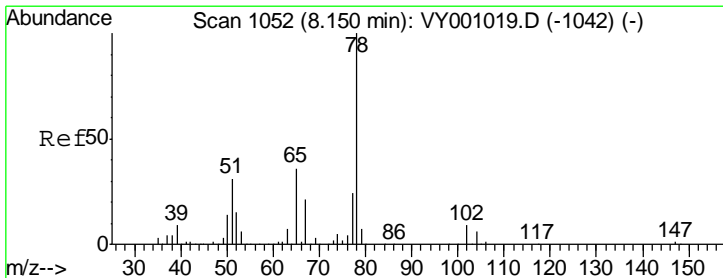
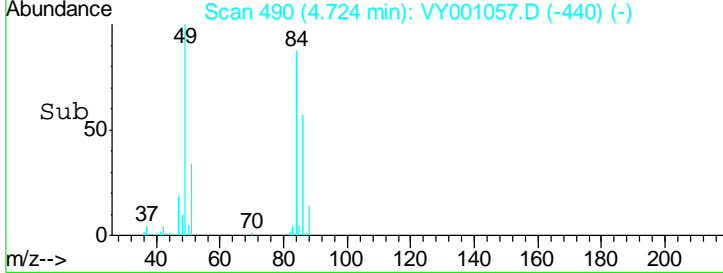
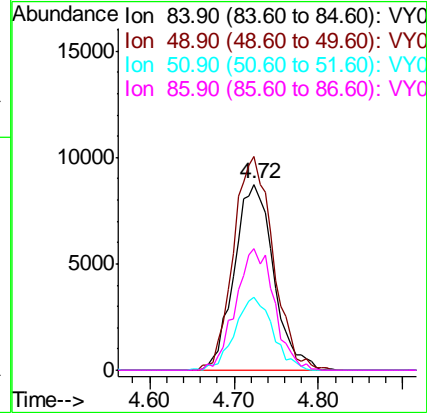
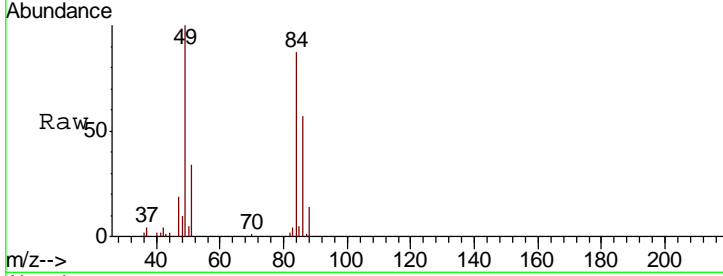




#20
 Methylene Chloride
 Concen: 8.832 ug/l
 RT: 4.72 min Scan# 490
 Delta R.T. 0.01 min
 Lab File: VY001057.D
 Acq: 24 Dec 2019 18:36

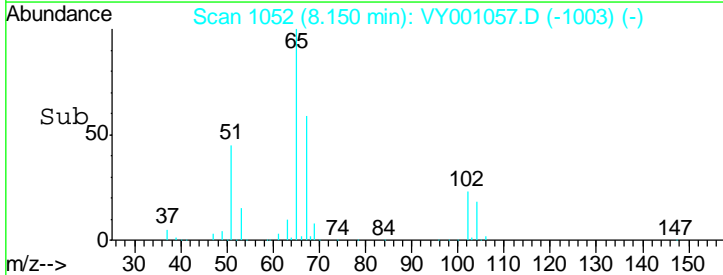
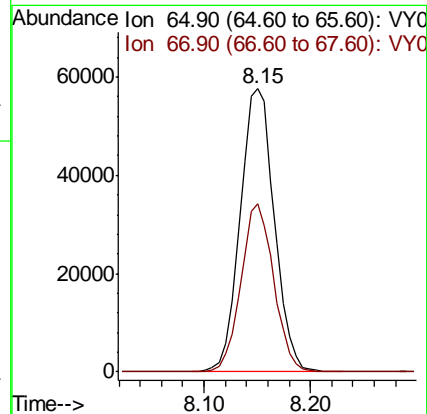
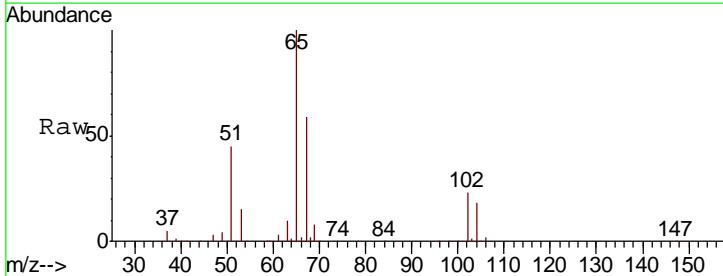
Instrument :
 MSVOA_Y
 ClientSampled :
 K183-SB-04

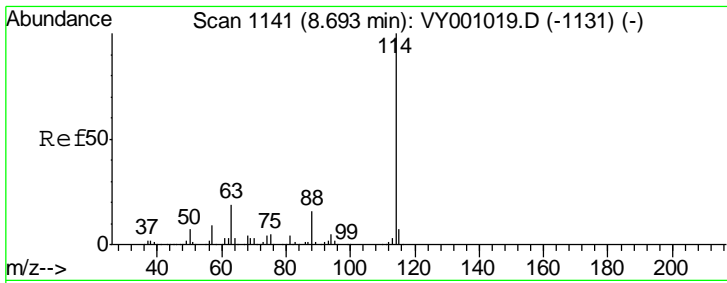
Tgt Ion	Resp	Lower	Upper
84	100		
49	114.7	99.8	149.6
51	39.0	31.4	47.2
86	65.6	52.2	78.2



#33
 1,2-Dichloroethane-d4
 Concen: 56.048 ug/l
 RT: 8.15 min Scan# 1052
 Delta R.T. 0.00 min
 Lab File: VY001057.D
 Acq: 24 Dec 2019 18:36

Tgt Ion	Resp	Lower	Upper
65	100		
67	56.9	0.0	112.8

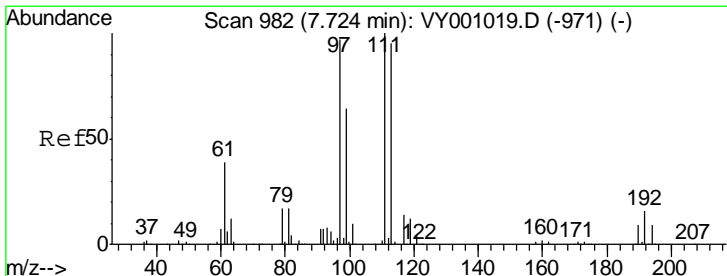
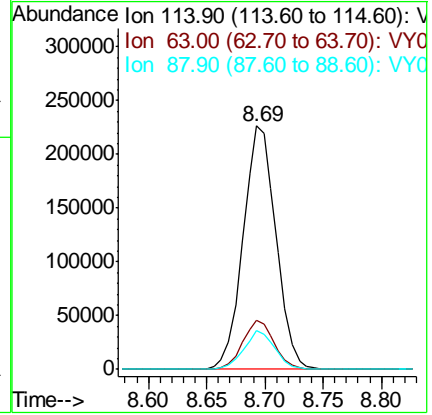
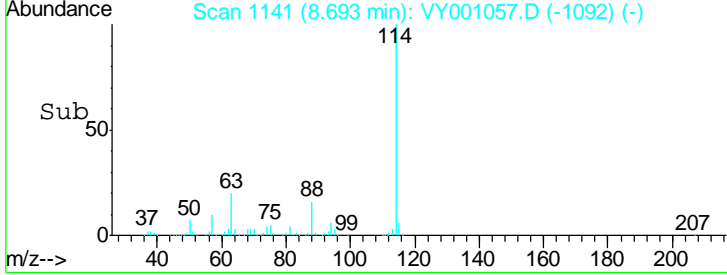
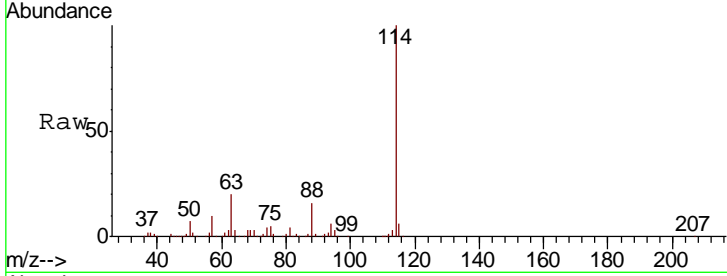




#34
 1,4-Difluorobenzene
 Concen: 50.000 ug/l
 RT: 8.69 min Scan# 1141
 Delta R.T. 0.00 min
 Lab File: VY001057.D
 Acq: 24 Dec 2019 18:36

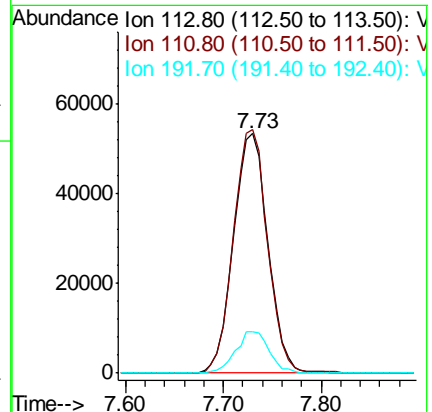
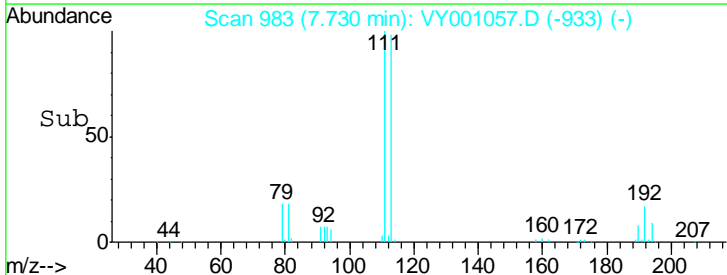
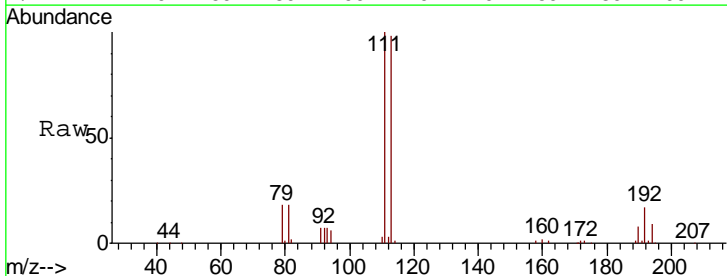
Instrument :
 MSVOA_Y
 ClientSampled :
 K183-SB-04

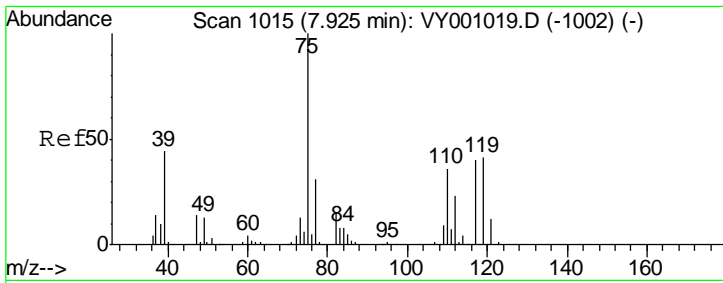
Tgt Ion	Resp	Lower	Upper
114	100		
63	20.3	0.0	37.0
88	16.0	0.0	32.0



#35
 Dibromofluoromethane
 Concen: 49.975 ug/l
 RT: 7.73 min Scan# 983
 Delta R.T. 0.01 min
 Lab File: VY001057.D
 Acq: 24 Dec 2019 18:36

Tgt Ion	Resp	Lower	Upper
113	100		
111	100.3	83.0	124.4
192	17.0	14.6	21.8

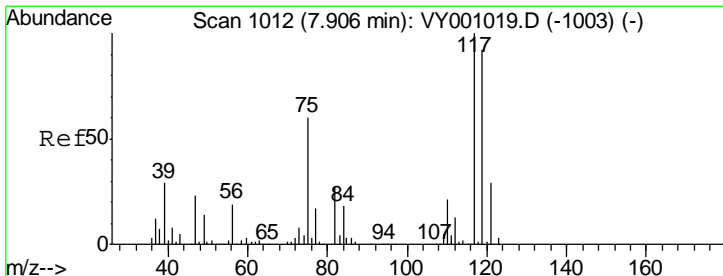
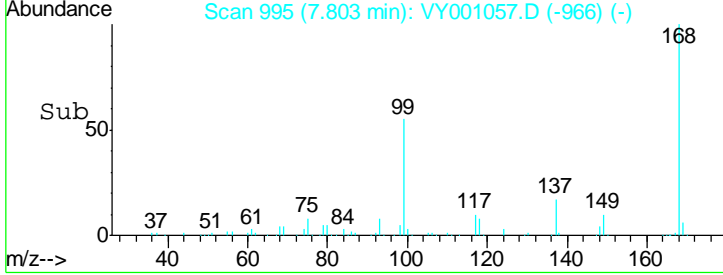
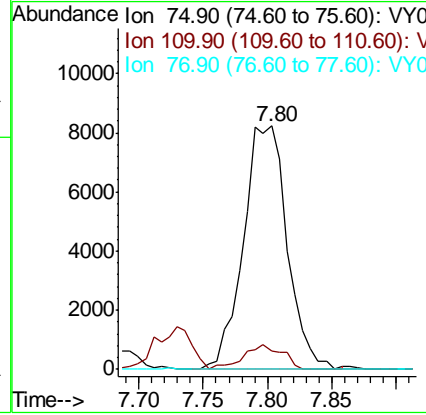
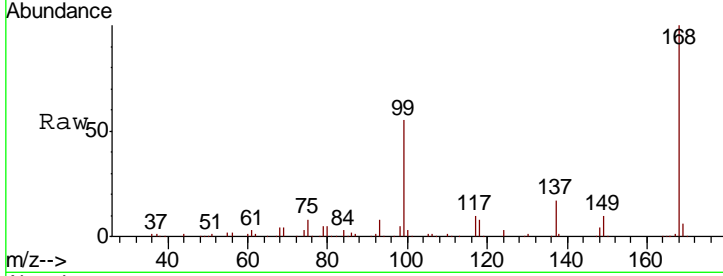




#36
 1,1-Dichloropropene
 Concen: 4.575 ug/l
 RT: 7.80 min Scan# 995
 Delta R.T. -0.12 min
 Lab File: VY001057.D
 Acq: 24 Dec 2019 18:36

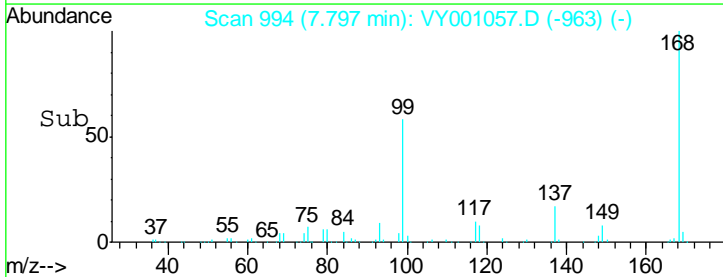
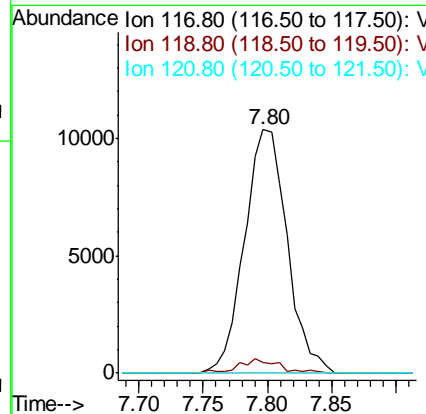
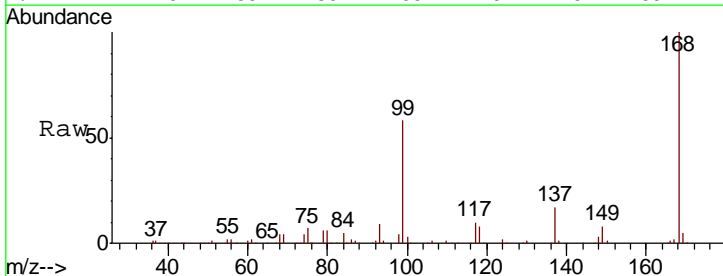
Instrument :
 MSVOA_Y
 ClientSampled :
 K183-SB-04

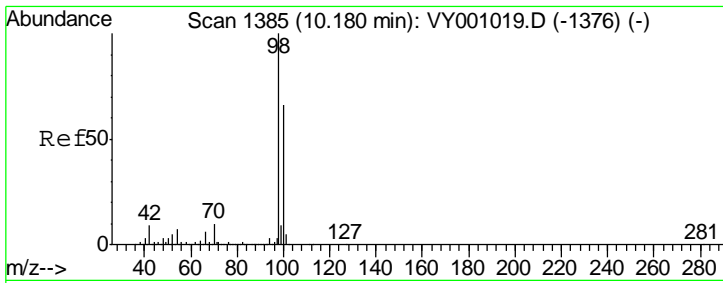
Tgt Ion	Resp	Lower	Upper
75	19359		
110	8.7	18.1	54.4#
77	0.0	24.6	37.0#



#38
 Carbon Tetrachloride
 Concen: 6.426 ug/l
 RT: 7.80 min Scan# 994
 Delta R.T. -0.11 min
 Lab File: VY001057.D
 Acq: 24 Dec 2019 18:36

Tgt Ion	Resp	Lower	Upper
117	23825		
119	4.4	74.2	111.2#
121	0.0	22.9	34.3#

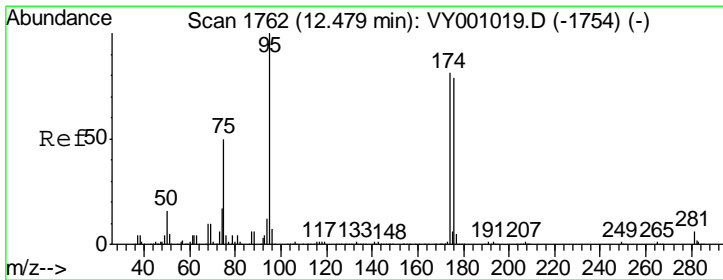
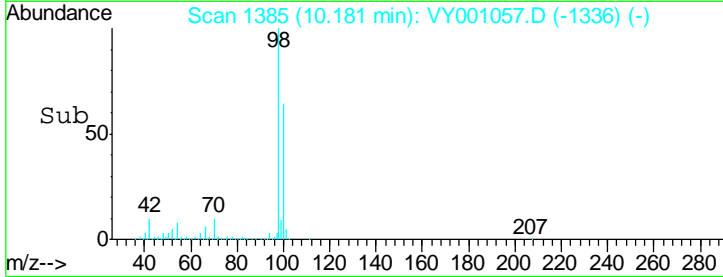
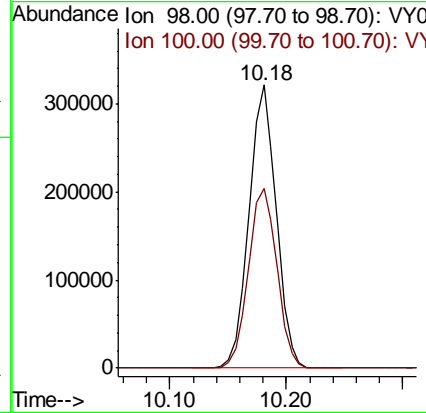
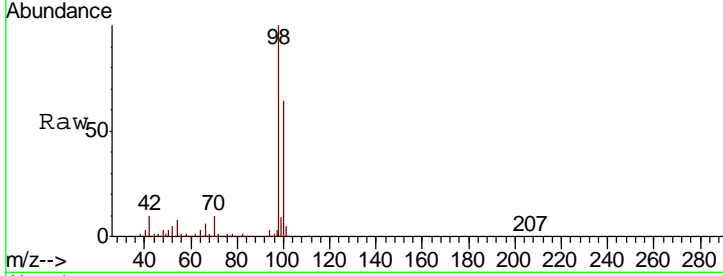




#50
 Toluene-d8
 Concen: 51.507 ug/l
 RT: 10.18 min Scan# 1385
 Delta R.T. 0.00 min
 Lab File: VY001057.D
 Acq: 24 Dec 2019 18:36

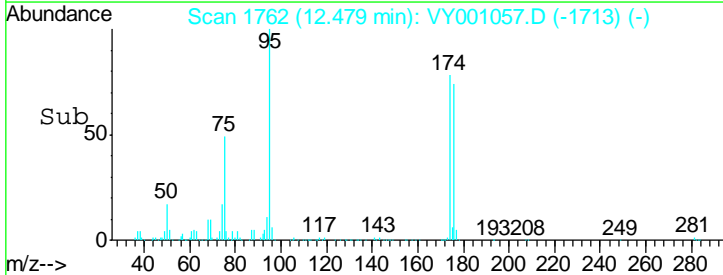
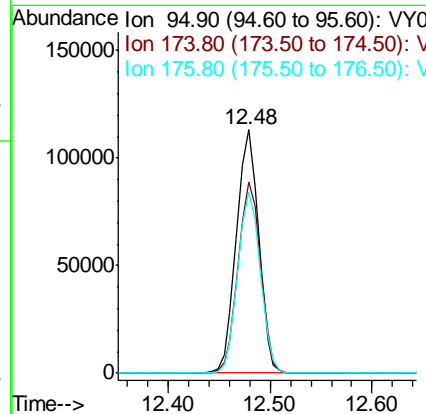
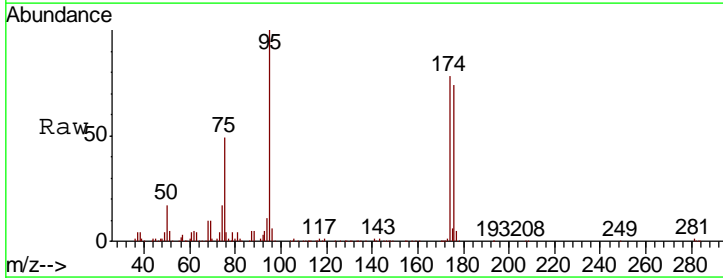
Instrument : MSVOA_Y
 ClientSampled : K183-SB-04

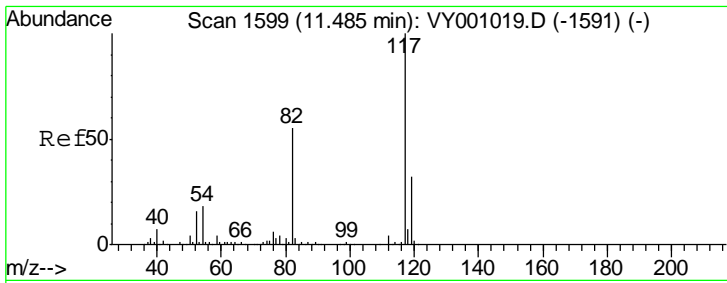
Tgt Ion	Resp	Lower	Upper
98	525776		
100	66.4	53.0	79.4



#62
 4-Bromofluorobenzene
 Concen: 45.748 ug/l
 RT: 12.48 min Scan# 1762
 Delta R.T. 0.00 min
 Lab File: VY001057.D
 Acq: 24 Dec 2019 18:36

Tgt Ion	Resp	Lower	Upper
95	170739		
174	79.2	0.0	156.4
176	74.7	0.0	155.0

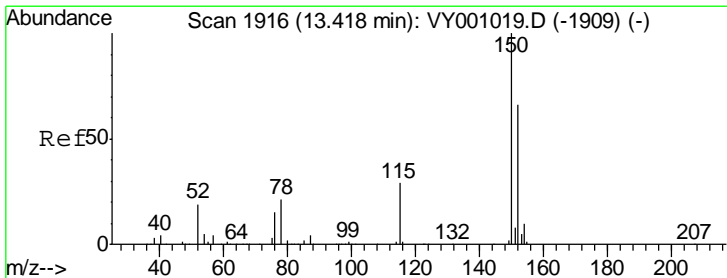
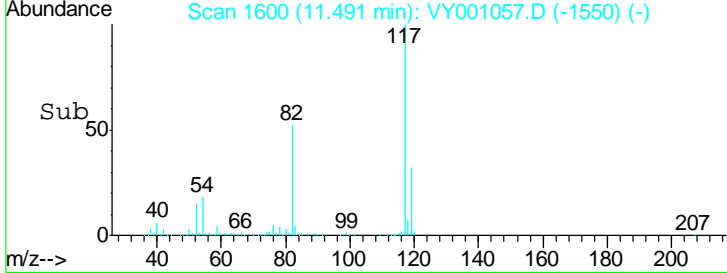
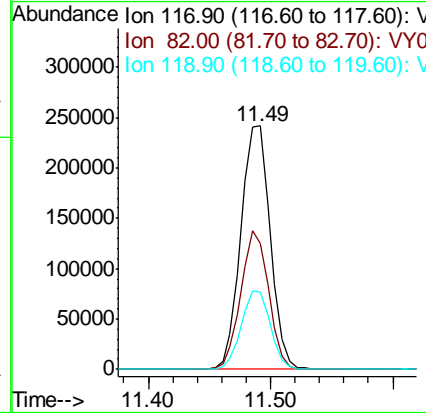
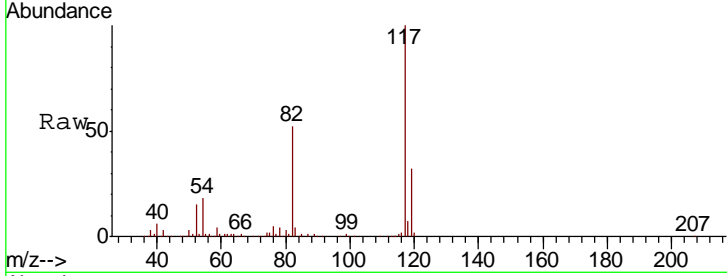




#63
 Chlorobenzene-d5
 Concen: 50.000 ug/l
 RT: 11.49 min Scan# 1600
 Delta R.T. 0.01 min
 Lab File: VY001057.D
 Acq: 24 Dec 2019 18:36

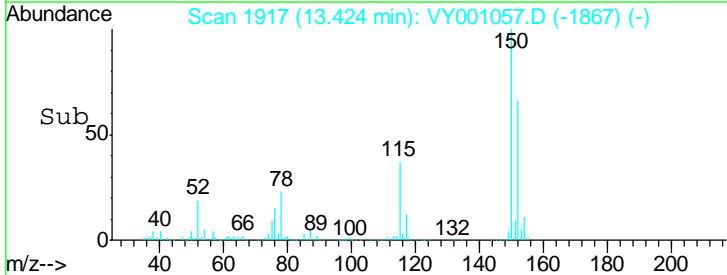
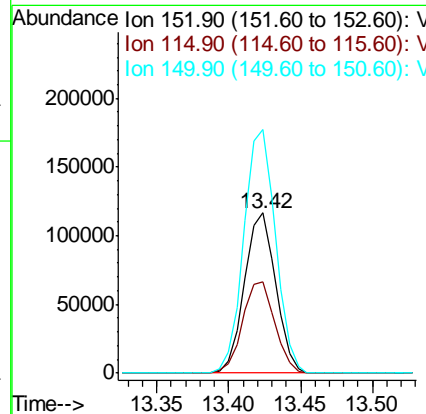
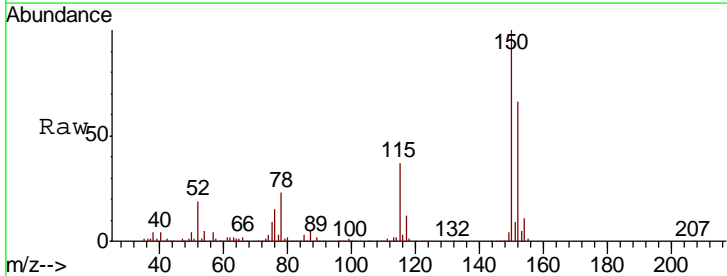
Instrument : MSVOA_Y
 ClientSampled : K183-SB-04

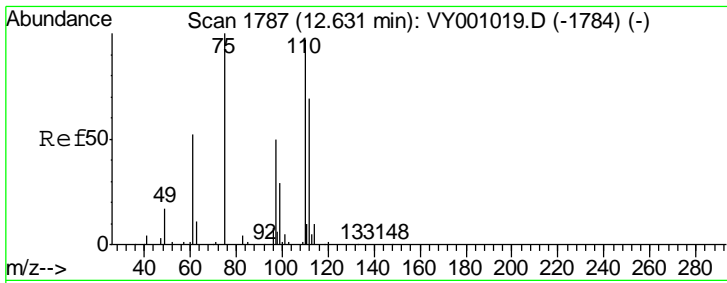
Tgt Ion	Resp	Lower	Upper
117	401437		
82	51.8	43.8	65.8
119	31.7	25.8	38.6



#72
 1,4-Dichlorobenzene-d4
 Concen: 50.000 ug/l
 RT: 13.42 min Scan# 1917
 Delta R.T. 0.01 min
 Lab File: VY001057.D
 Acq: 24 Dec 2019 18:36

Tgt Ion	Resp	Lower	Upper
152	174438		
115	59.3	29.8	89.3
150	155.5	0.0	352.6

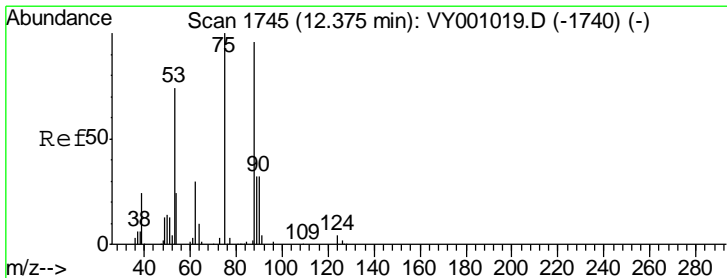
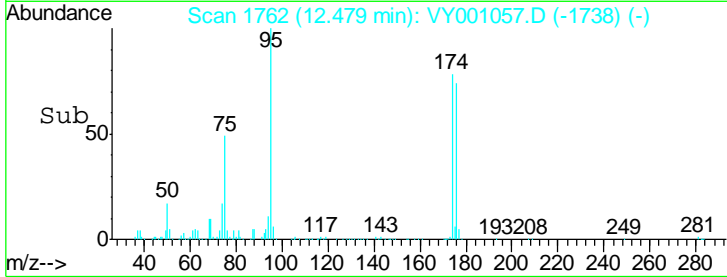
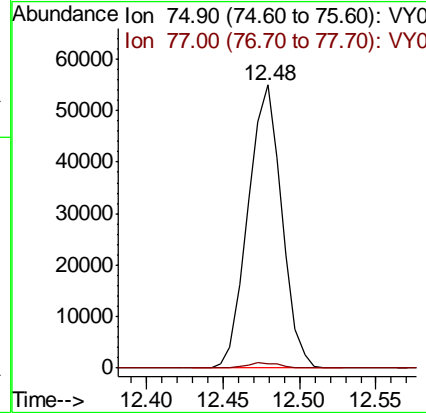
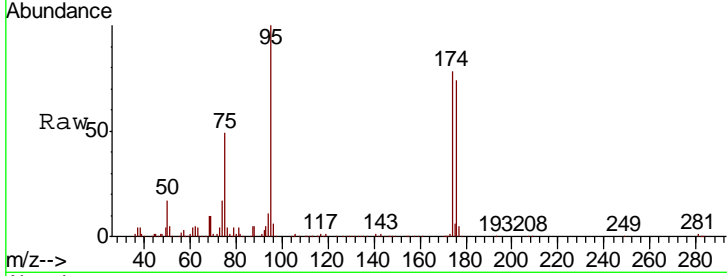




#76
 1,2,3-Trichloropropane
 Concen: 39.155 ug/l
 RT: 12.48 min Scan# 1762
 Delta R.T. -0.15 min
 Lab File: VY001057.D
 Acq: 24 Dec 2019 18:36

Instrument :
 MSVOA_Y
 ClientSampled :
 K183-SB-04

Tgt Ion: 75 Resp: 84201
 Ion Ratio Lower Upper
 75 100
 77 1.8 0.0 0.0#



#81
 trans-1,4-Dichloro-2-butene
 Concen: 83.508 ug/l
 RT: 12.48 min Scan# 1762
 Delta R.T. 0.10 min
 Lab File: VY001057.D
 Acq: 24 Dec 2019 18:36

Tgt Ion: 75 Resp: 84201
 Ion Ratio Lower Upper
 75 100
 53 0.0 60.6 91.0#
 89 0.1 35.4 53.0#

