

Data Path : Z:\VOASRV\HPCHEM1\MSVOA Y\DATA\VY122619\  
 Data File : VY001066.D  
 Acq On : 26 Dec 2019 13:02  
 Operator : SY/MD  
 Sample : K6431-01  
 Misc : 7.74G/5ML/MSVOA Y/SOIL  
 ALS Vial : 6 Sample Multiplier: 1

Instrument :  
 MSVOA\_Y  
 ClientSampleId :  
 SB-5-(0-2)

Integration Parameters: RTEINT.P

Integrator: RTE  
 Smoothing : ON  
 Sampling : 1  
 Start Thrs: 0.2  
 Stop Thrs : 0

Filtering: 5  
 Min Area: 3 % of largest Peak  
 Max Peaks: 100  
 Peak Location: TOP

If leading or trailing edge < 100 prefer < Baseline drop else tangent >  
 Peak separation: 5

Method : Z:\VOASRV\HPCHEM1\MSVOA\_Y\METHODS\82Y122319S.M  
 Title : SW846 8260

Signal : TIC

peak #	R.T. min	first scan	max scan	last scan	PK TY	peak height	corr. area	corr. % max.	% of total
1	2.109	58	61	64	rBV2	1542	2127	1.06%	0.200%
2	2.670	151	153	160	rVB6	1372	2574	1.28%	0.241%
3	3.042	212	214	220	rVB6	1942	2539	1.26%	0.238%
4	4.816	503	505	514	rVB4	1252	2487	1.24%	0.233%
5	5.188	564	566	571	rVB3	1582	2063	1.03%	0.194%
6	7.724	973	982	988	rBV2	26107	62496	31.10%	5.862%
7	7.797	988	994	1005	rVB2	47636	112655	56.07%	10.567%
8	8.151	1044	1052	1062	rVB2	25865	56365	28.05%	5.287%
9	8.699	1134	1142	1151	rVB	76956	150192	74.75%	14.088%
10	10.181	1378	1385	1394	rBV	119809	200926	100.00%	18.847%
11	10.583	1445	1451	1456	rBV3	1498	3102	1.54%	0.291%
12	11.485	1591	1599	1608	rBV	99040	159924	79.59%	15.001%
13	11.699	1629	1634	1639	rBV3	1798	3605	1.79%	0.338%
14	12.321	1732	1736	1742	rVB4	1648	3318	1.65%	0.311%
15	12.479	1754	1762	1769	rBV	67337	105398	52.46%	9.886%
16	12.760	1802	1808	1810	rBV4	1622	2119	1.05%	0.199%
17	12.808	1812	1816	1820	rBV3	1312	2224	1.11%	0.209%
18	13.119	1863	1867	1873	rVB4	1674	2664	1.33%	0.250%
19	13.247	1883	1888	1893	rVB5	1680	3056	1.52%	0.287%
20	13.363	1903	1907	1911	rBV3	3687	5875	2.92%	0.551%
21	13.424	1911	1917	1925	rVB	81953	136736	68.05%	12.826%
22	13.692	1957	1961	1964	rVV4	5672	8358	4.16%	0.784%
23	13.729	1964	1967	1971	rVB4	2115	3628	1.81%	0.340%
24	14.473	2086	2089	2097	rVB7	5134	8656	4.31%	0.812%
25	14.668	2119	2121	2126	rVB3	3286	3473	1.73%	0.326%
26	15.003	2171	2176	2181	rVB5	3584	5818	2.90%	0.546%
27	15.229	2208	2213	2218	rBV3	5092	7916	3.94%	0.743%
28	15.424	2240	2245	2248	rVB4	2497	3430	1.71%	0.322%
29	15.619	2273	2277	2282	rBV4	1176	2388	1.19%	0.224%

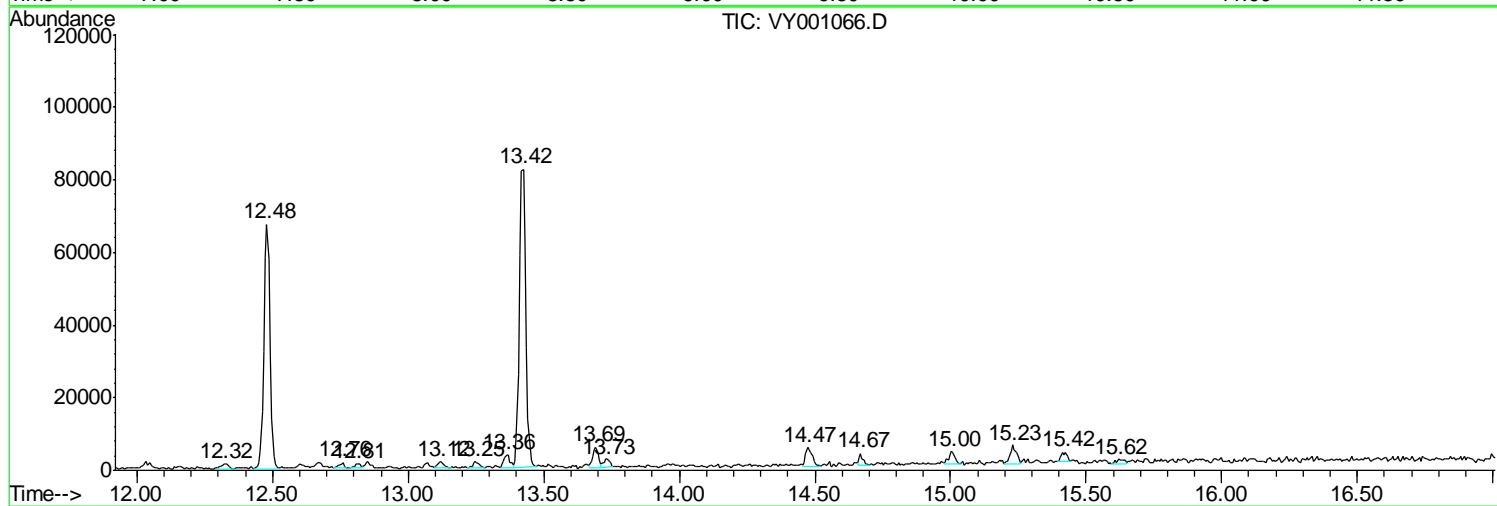
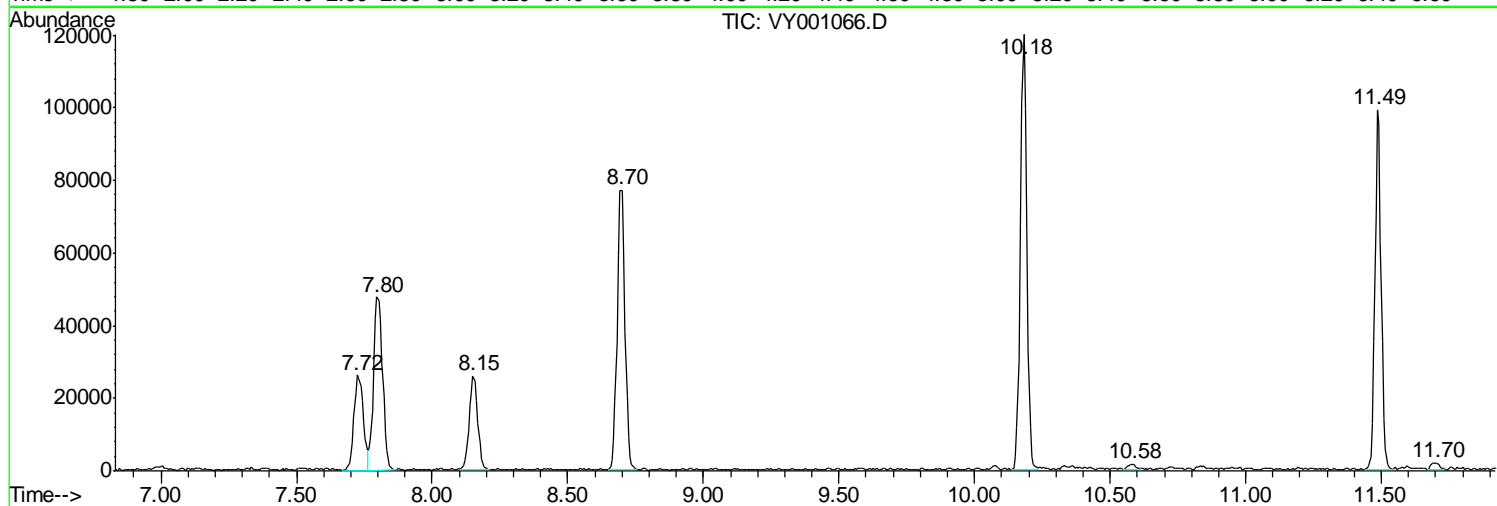
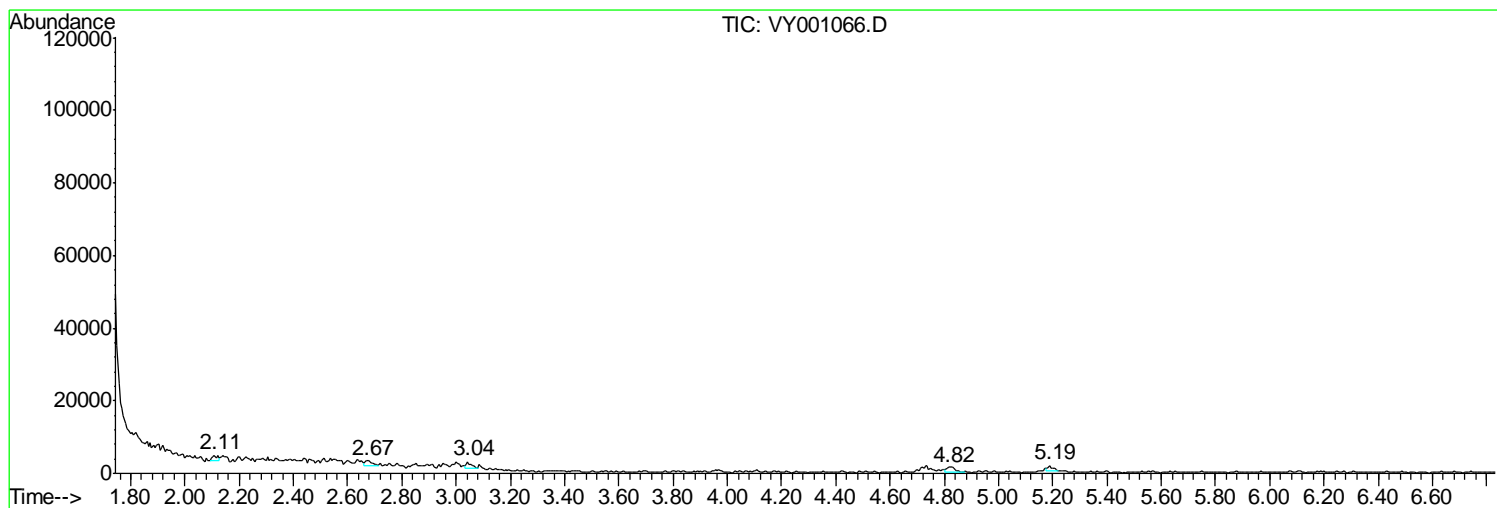
Sum of corrected areas: 1066112

Data Path : Z:\VOASRV\HPCHEM1\MSVOA Y\DATA\VY122619\  
 Data File : VY001066.D  
 Acq On : 26 Dec 2019 13:02  
 Operator : SY/MD  
 Sample : K6431-01  
 Misc : 7.74G/5ML/MSVOA Y/SOIL  
 ALS Vial : 6 Sample Multiplier: 1

Instrument :  
 MSVOA\_Y  
 ClientSampleId :  
 SB-5-(0-2)

Quant Method : Z:\VOASRV\HPCHEM1\MSVOA\_Y\METHODS\82Y122319S.M  
 Quant Title : SW846 8260

TIC Library : C:\DATABASE\NIST11.L  
 TIC Integration Parameters: LSCINT.P



Data Path : Z:\VOASRV\HPCHEM1\MSVOA\_Y\DATA\VY122619\  
Data File : VY001066.D  
Acq On : 26 Dec 2019 13:02  
Operator : SY/MD  
Sample : K6431-01  
Misc : 7.74G/5ML/MSVOA\_Y/SOIL  
ALS Vial : 6 Sample Multiplier: 1

Instrument :  
MSVOA\_Y  
ClientSampleId :  
SB-5-(0-2)

Quant Method : Z:\VOASRV\HPCHEM1\MSVOA\_Y\METHODS\82Y122319S.M  
Quant Title : SW846 8260

TIC Library : C:\DATABASE\NIST11.L  
TIC Integration Parameters: LSCINT.P

No Library Search Compounds Detected

\*\*\*\*\*

Data Path : Z:\VOASRV\HPCHEM1\MSVOA\_Y\DATA\VY122619\  
Data File : VY001066.D  
Acq On : 26 Dec 2019 13:02  
Operator : SY/MD  
Sample : K6431-01  
Misc : 7.74G/5ML/MSVOA\_Y/SOIL  
ALS Vial : 6 Sample Multiplier: 1

Instrument :  
MSVOA\_Y  
ClientSampleId :  
SB-5-(0-2)

Quant Method : Z:\VOASRV\HPCHEM1\MSVOA\_Y\METHODS\82Y122319S.M  
Quant Title : SW846 8260

TIC Library : C:\DATABASE\NIST11.L  
TIC Integration Parameters: LSCINT.P

TIC Top Hit name	RT	EstConc	Units	Response	--Internal Standard--			
					#	RT	Resp	Conc

---