

Data Path : Z:\voasrv\HPCHEM1\MSVOA\_Y\Data\VY122624\  
 Data File : VY020718.D  
 Acq On : 26 Dec 2024 15:41  
 Operator : SY/MD  
 Sample : P5316-01  
 Misc : 5.77g/5.0mL/MSVOA\_Y/SOIL/B  
 ALS Vial : 16 Sample Multiplier: 1

**Instrument :**  
 MSVOA\_Y  
**ClientSampleId :**  
 TT-304-IDWSO-20241217-1

Quant Time: Dec 27 00:33:41 2024  
 Quant Method : Z:\voasrv\HPCHEM1\MSVOA\_Y\methods\82Y122624S.M  
 Quant Title : SW846 8260  
 QLast Update : Thu Dec 26 16:12:28 2024  
 Response via : Initial Calibration

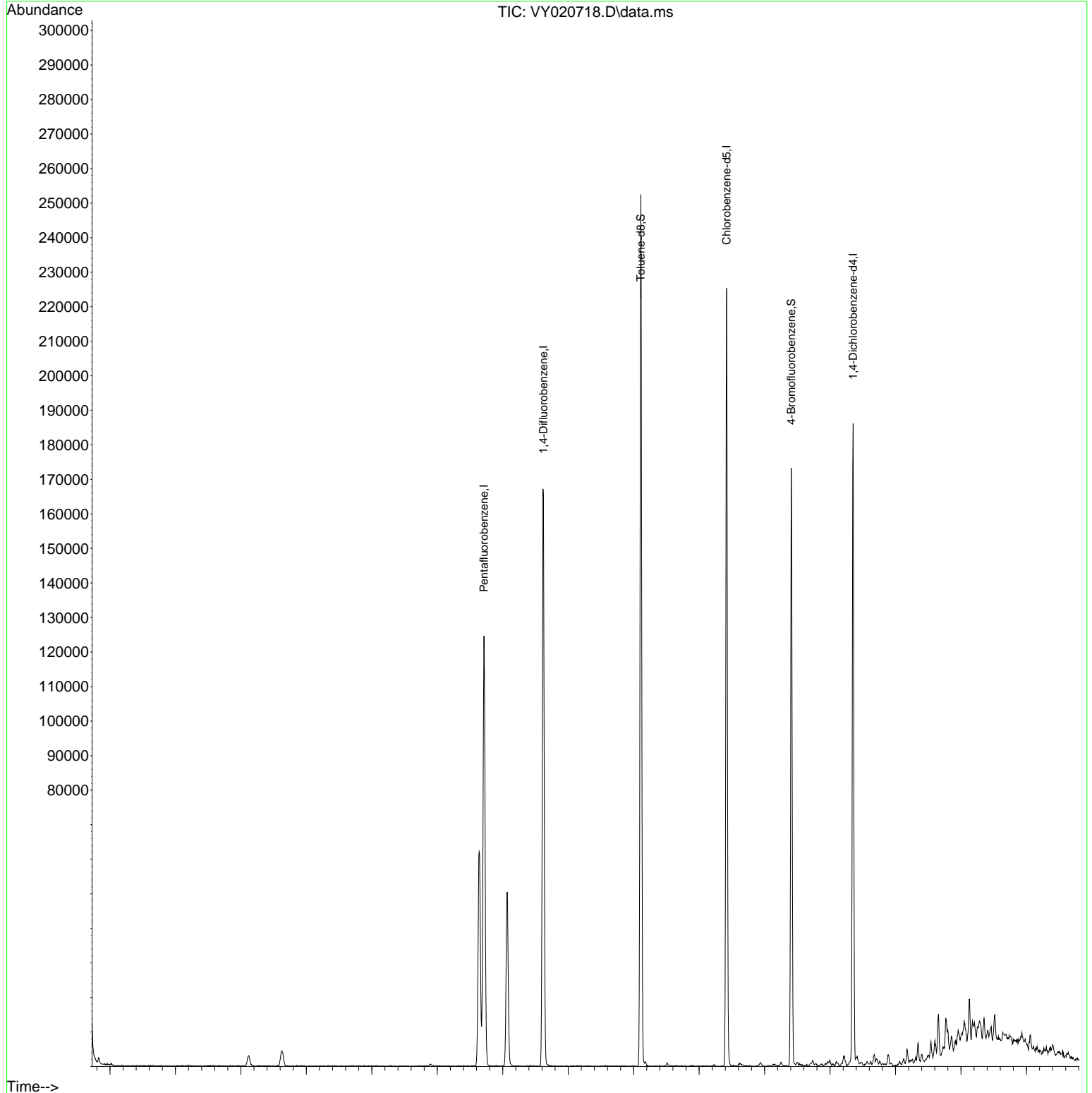
Compound	R.T.	QIon	Response	Conc	Units	Dev(Min)
-----						
Internal Standards						
1) Pentafluorobenzene	7.713	168	93149	50.000	ug/l	-0.01
34) 1,4-Difluorobenzene	8.622	114	143334	50.000	ug/l	0.00
63) Chlorobenzene-d5	11.420	117	120055	50.000	ug/l	0.00
72) 1,4-Dichlorobenzene-d4	13.352	152	47762	50.000	ug/l	0.00
System Monitoring Compounds						
33) 1,2-Dichloroethane-d4	8.067	65	44634	58.500	ug/l	0.00
Spiked Amount	50.000	Range 50 - 163	Recovery	=	117.000%	
35) Dibromofluoromethane	7.646	113	43588	55.209	ug/l	0.00
Spiked Amount	50.000	Range 54 - 147	Recovery	=	110.420%	
50) Toluene-d8	10.109	98	165584	52.647	ug/l	0.00
Spiked Amount	50.000	Range 58 - 134	Recovery	=	105.300%	
62) 4-Bromofluorobenzene	12.408	95	49002	46.703	ug/l	0.00
Spiked Amount	50.000	Range 29 - 146	Recovery	=	93.400%	
Target Compounds						
17) Carbon Disulfide	4.122	76	6498	4.161	ug/l	Qvalue 96
-----						

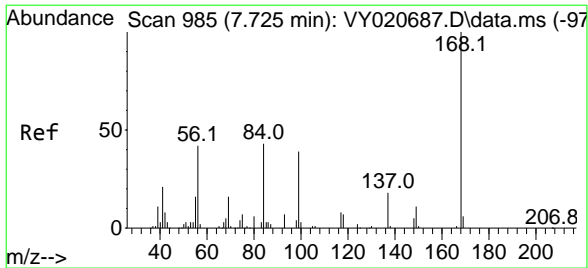
(#) = qualifier out of range (m) = manual integration (+) = signals summed

Data Path : Z:\voasrv\HPCHEM1\MSVOA\_Y\Data\VY122624\  
 Data File : VY020718.D  
 Acq On : 26 Dec 2024 15:41  
 Operator : SY/MD  
 Sample : P5316-01  
 Misc : 5.77g/5.0mL/MSVOA\_Y/SOIL/B  
 ALS Vial : 16 Sample Multiplier: 1

**Instrument :**  
 MSVOA\_Y  
**ClientSampleId :**  
 TT-304-IDWSO-20241217-1

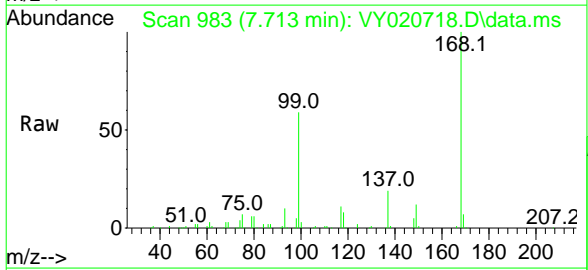
Quant Time: Dec 27 00:33:41 2024  
 Quant Method : Z:\voasrv\HPCHEM1\MSVOA\_Y\methods\82Y122624S.M  
 Quant Title : SW846 8260  
 QLast Update : Thu Dec 26 16:12:28 2024  
 Response via : Initial Calibration



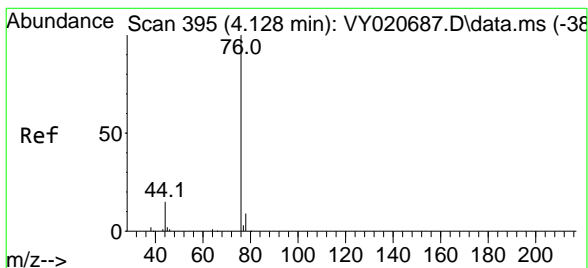
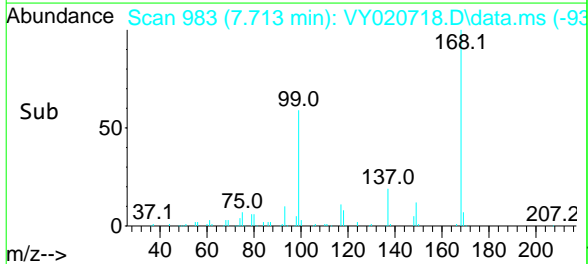
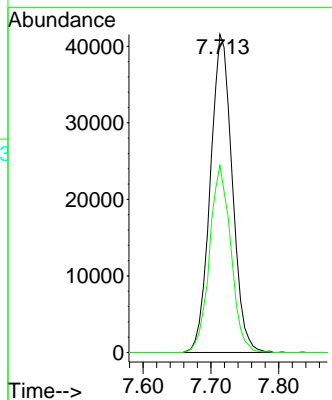


#1  
 Pentafluorobenzene  
 Concen: 50.000 ug/l  
 RT: 7.713 min Scan# 98  
 Delta R.T. -0.012 min  
 Lab File: VY020718.D  
 Acq: 26 Dec 2024 15:41

Instrument : MSVOA\_Y  
 ClientSampleId : TT-304-IDWSO-20241217-1

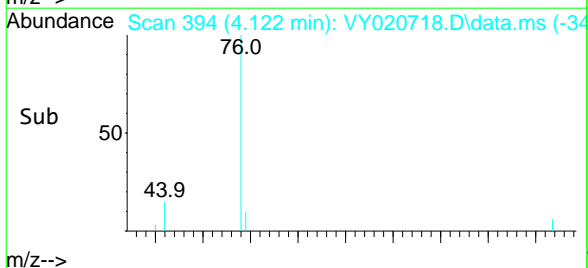
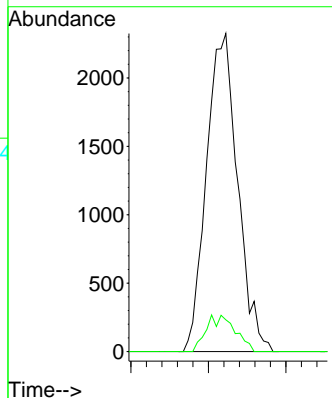
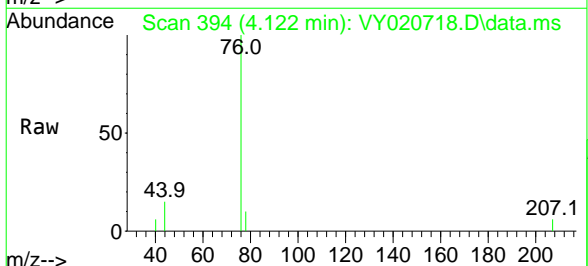


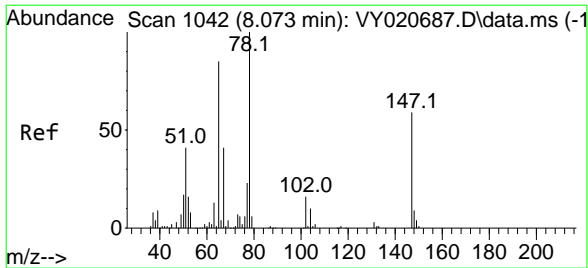
Tgt Ion: 168 Resp: 93149  
 Ion Ratio Lower Upper  
 168 100  
 99 58.8 43.8 65.6



#17  
 Carbon Disulfide  
 Concen: 4.161 ug/l  
 RT: 4.122 min Scan# 394  
 Delta R.T. -0.006 min  
 Lab File: VY020718.D  
 Acq: 26 Dec 2024 15:41

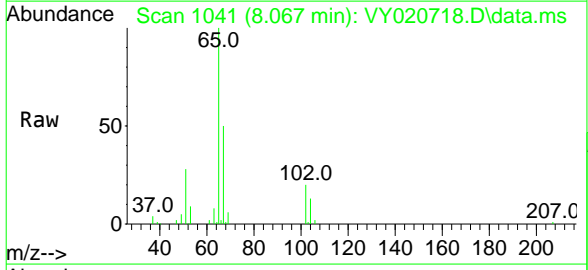
Tgt Ion: 76 Resp: 6498  
 Ion Ratio Lower Upper  
 76 100  
 78 10.0 6.9 10.3



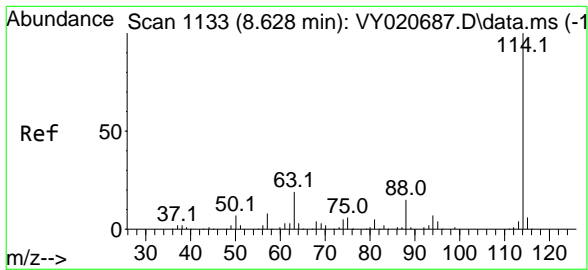
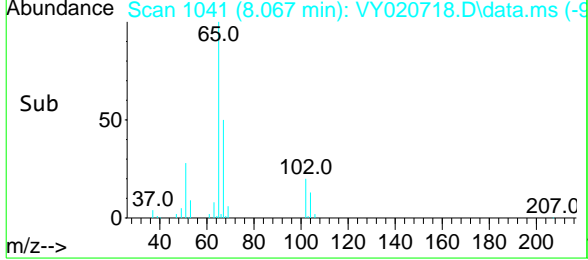
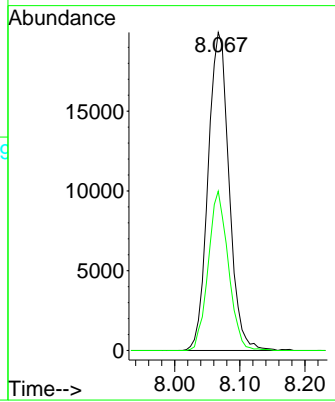


#33  
 1,2-Dichloroethane-d4  
 Concen: 58.500 ug/l  
 RT: 8.067 min Scan# 1041  
 Delta R.T. -0.006 min  
 Lab File: VY020718.D  
 Acq: 26 Dec 2024 15:41

Instrument : MSVOA\_Y  
 ClientSampleId : TT-304-IDWSO-20241217-1

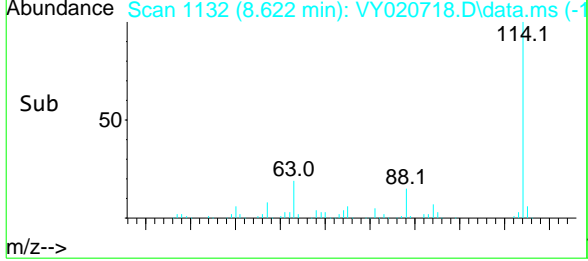
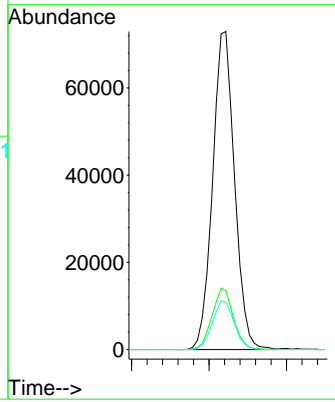
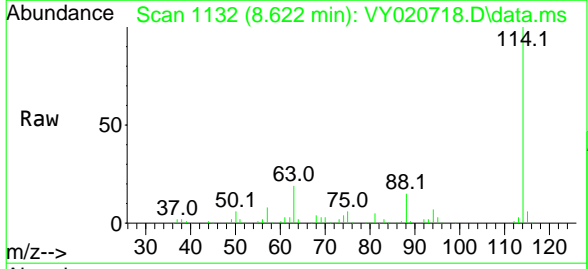


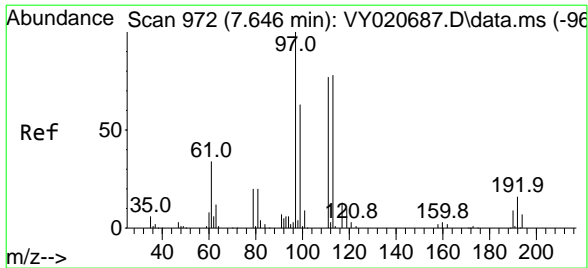
Tgt Ion: 65 Resp: 44634  
 Ion Ratio Lower Upper  
 65 100  
 67 48.1 0.0 98.0



#34  
 1,4-Difluorobenzene  
 Concen: 50.000 ug/l  
 RT: 8.622 min Scan# 1132  
 Delta R.T. -0.006 min  
 Lab File: VY020718.D  
 Acq: 26 Dec 2024 15:41

Tgt Ion: 114 Resp: 143334  
 Ion Ratio Lower Upper  
 114 100  
 63 18.6 0.0 38.4  
 88 14.9 0.0 30.4

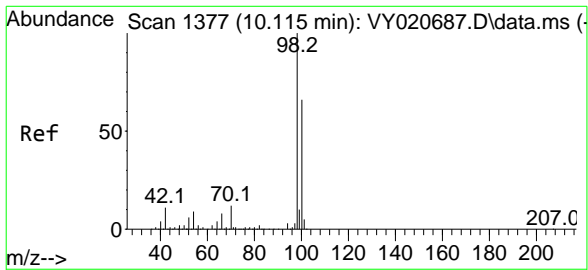
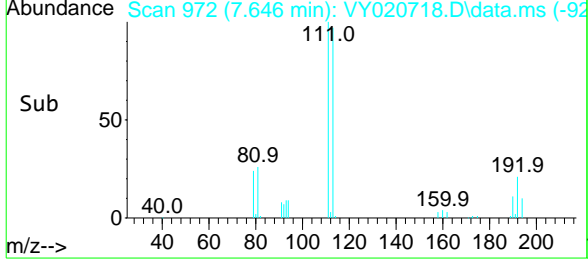
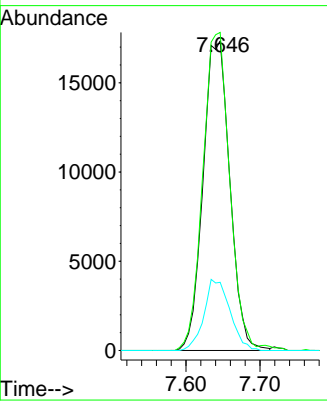
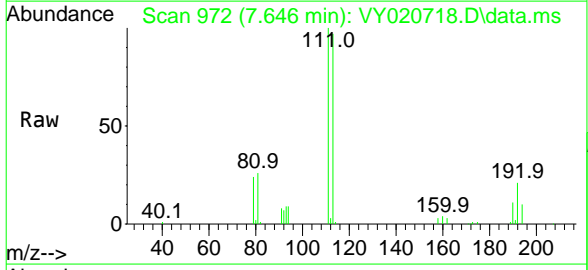




#35  
 Dibromofluoromethane  
 Concen: 55.209 ug/l  
 RT: 7.646 min Scan# 97  
 Delta R.T. 0.000 min  
 Lab File: VY020718.D  
 Acq: 26 Dec 2024 15:41

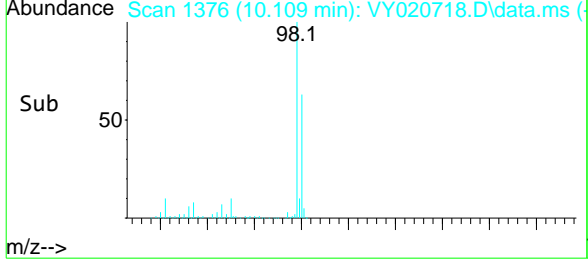
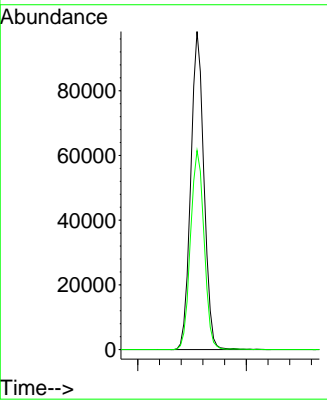
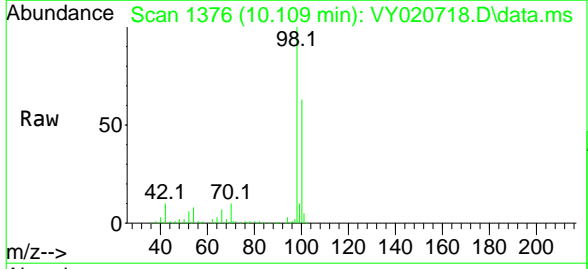
Instrument : MSVOA\_Y  
 ClientSampleId : TT-304-IDWSO-20241217-1

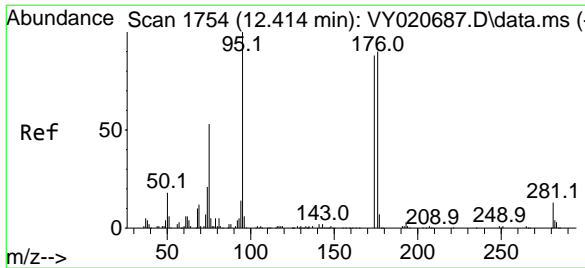
Tgt Ion	Resp	Lower	Upper
113	43588		
113	100		
111	103.5	79.8	119.8
192	22.3	17.0	25.6



#50  
 Toluene-d8  
 Concen: 52.647 ug/l  
 RT: 10.109 min Scan# 1376  
 Delta R.T. -0.006 min  
 Lab File: VY020718.D  
 Acq: 26 Dec 2024 15:41

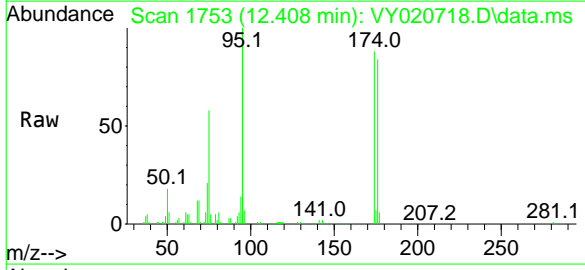
Tgt Ion	Resp	Lower	Upper
98	165584		
98	100		
100	64.4	52.2	78.4



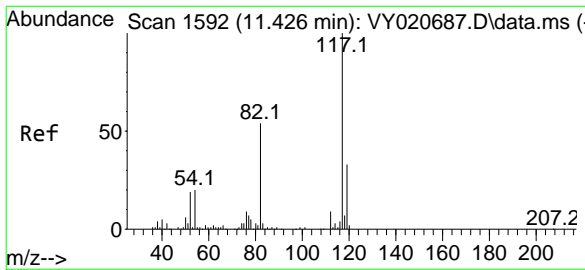
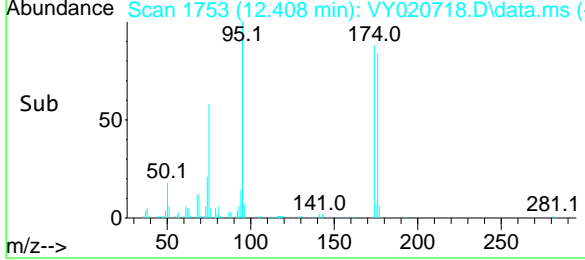
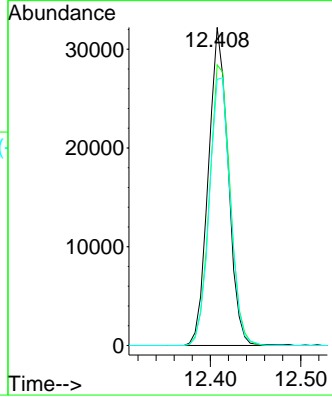


#62  
 4-Bromofluorobenzene  
 Concen: 46.703 ug/l  
 RT: 12.408 min Scan# 17  
 Delta R.T. -0.006 min  
 Lab File: VY020718.D  
 Acq: 26 Dec 2024 15:41

Instrument : MSVOA\_Y  
 ClientSampleId : TT-304-IDWSO-20241217-1

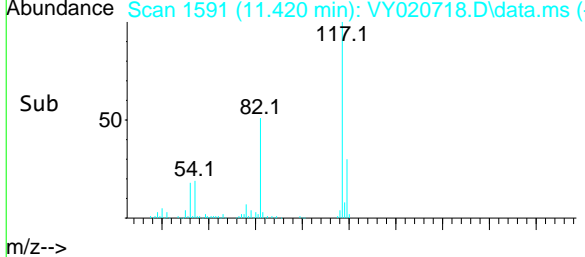
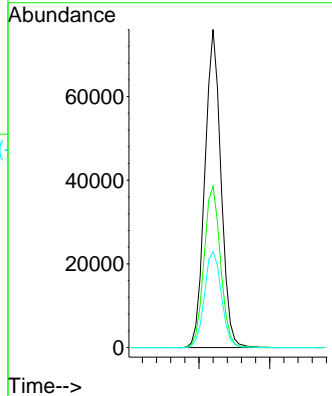
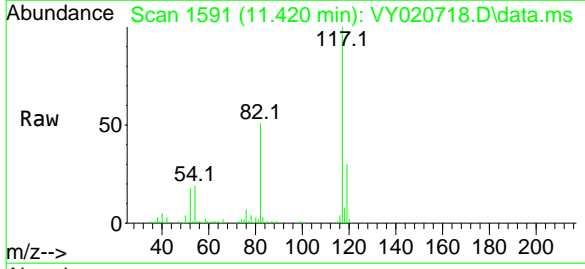


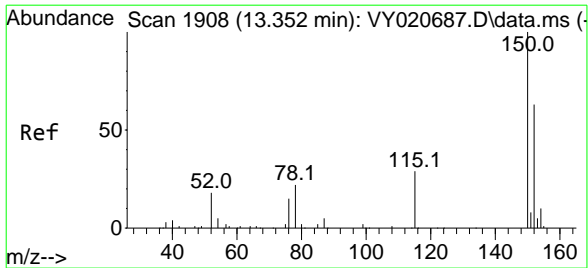
Tgt Ion	Resp	Lower	Upper
95	49002		
95	100		
174	92.3	0.0	179.2
176	89.1	0.0	179.8



#63  
 Chlorobenzene-d5  
 Concen: 50.000 ug/l  
 RT: 11.420 min Scan# 1591  
 Delta R.T. -0.006 min  
 Lab File: VY020718.D  
 Acq: 26 Dec 2024 15:41

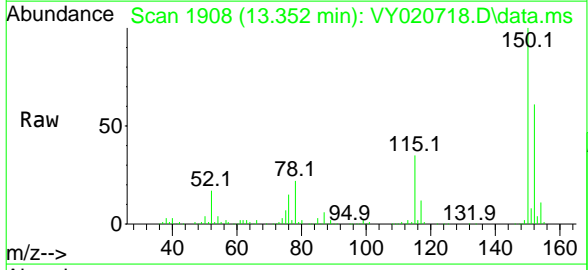
Tgt Ion	Resp	Lower	Upper
117	120055		
117	100		
82	50.8	43.4	65.2
119	30.2	26.6	39.8





#72  
 1,4-Dichlorobenzene-d4  
 Concen: 50.000 ug/l  
 RT: 13.352 min Scan# 19  
 Delta R.T. 0.000 min  
 Lab File: VY020718.D  
 Acq: 26 Dec 2024 15:41

Instrument : MSVOA\_Y  
 ClientSampleId : TT-304-IDWSO-20241217-1



Tgt Ion:152 Resp: 47762

Ion	Ratio	Lower	Upper
152	100		
115	58.3	30.3	90.9
150	157.5	0.0	349.0

