

Data Path : Z:\voasrv\HPCHEM1\MSVOA_Y\Data\VY122723\
 Data File : VY016872.D
 Acq On : 27 Dec 2023 13:02
 Operator : SY/MD
 Sample : 06027-03
 Misc : 5.05g/5.0mL/MSVOA_Y/SOIL/A
 ALS Vial : 10 Sample Multiplier: 1

Instrument :
 MSVOA_Y
 ClientSampleId :
 PIERS

Quant Time: Dec 28 03:44:11 2023
 Quant Method : Z:\voasrv\HPCHEM1\MSVOA_Y\methods\82Y122023S.M
 Quant Title : SW846 8260
 QLast Update : Thu Dec 21 01:49:45 2023
 Response via : Initial Calibration

Compound	R.T.	QIon	Response	Conc	Units	Dev(Min)

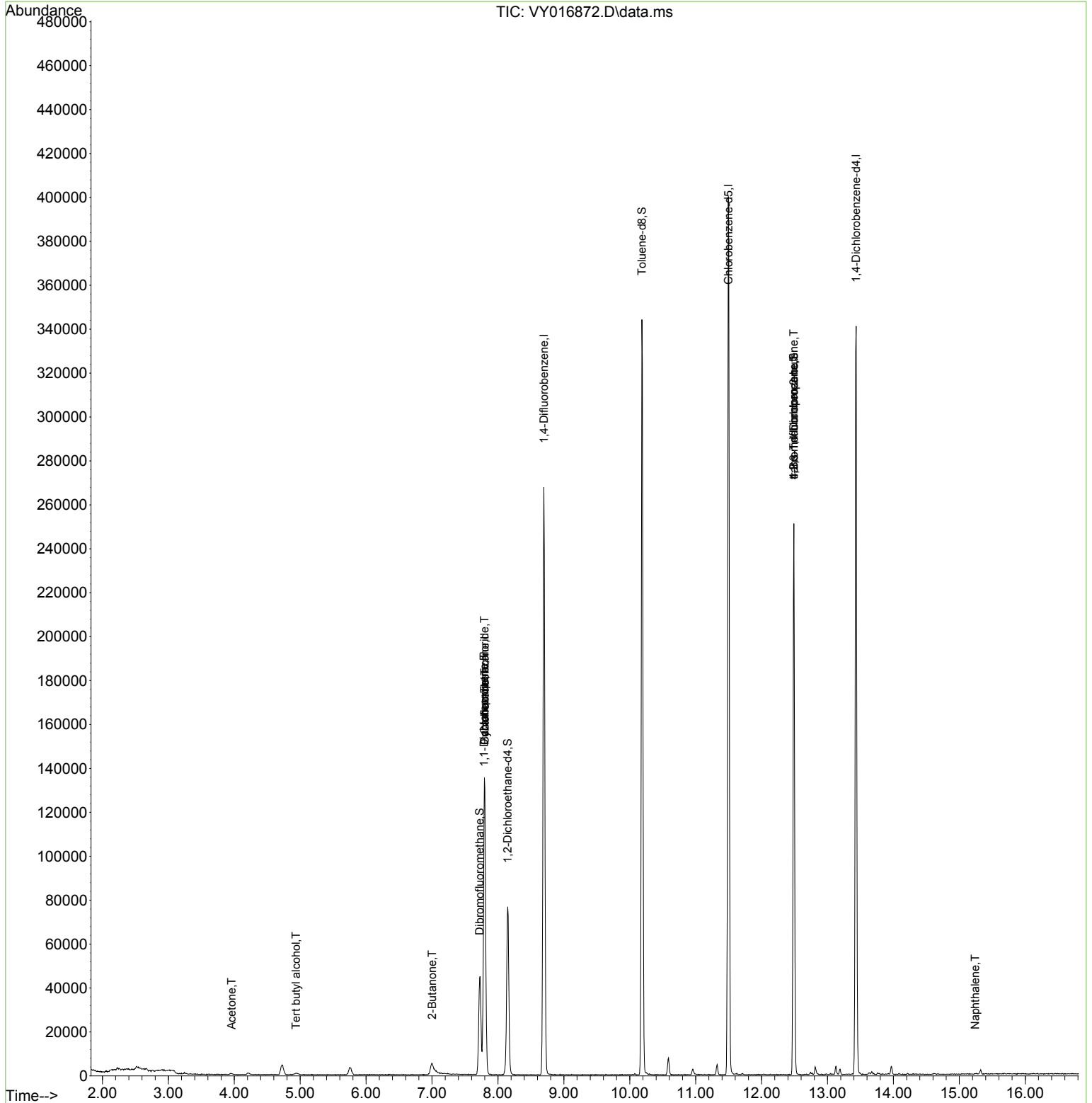
Internal Standards						
1) Pentafluorobenzene	7.801	168	100698	50.000	ug/l	0.00
34) 1,4-Difluorobenzene	8.697	114	221723	50.000	ug/l	0.00
63) Chlorobenzene-d5	11.495	117	219131	50.000	ug/l	0.00
72) 1,4-Dichlorobenzene-d4	13.434	152	85650	50.000	ug/l	0.00
System Monitoring Compounds						
33) 1,2-Dichloroethane-d4	8.148	65	57973	63.064	ug/l	0.00
Spiked Amount	50.000	Range	50 - 163	Recovery	=	126.120%
35) Dibromofluoromethane	7.722	113	33277	26.201	ug/l	0.00
Spiked Amount	50.000	Range	54 - 147	Recovery	=	52.400%#
50) Toluene-d8	10.185	98	221968	48.480	ug/l	0.00
Spiked Amount	50.000	Range	58 - 134	Recovery	=	96.960%
62) 4-Bromofluorobenzene	12.489	95	71274	47.983	ug/l	0.00
Spiked Amount	50.000	Range	30 - 143	Recovery	=	95.960%
Target Compounds						
					Qvalue	
11) Tert butyl alcohol	4.936	59	566	7.509	ug/l #	75
16) Acetone	3.960	43	995	4.003	ug/l #	73
25) 2-Butanone	7.002	43	426	1.245	ug/l #	48
31) Cyclohexane	7.801	56	2502	1.421	ug/l #	34
36) 1,1-Dichloropropene	7.789	75	9381	4.607	ug/l #	49
38) Carbon Tetrachloride	7.795	117	10289	5.107	ug/l #	16
76) 1,2,3-Trichloropropane	12.489	75	38459	40.619	ug/l #	100
81) trans-1,4-Dichloro-2-b...	12.489	75	38459	95.392	ug/l #	12
95) Naphthalene	15.239	128	397	3.727	ug/l #	69

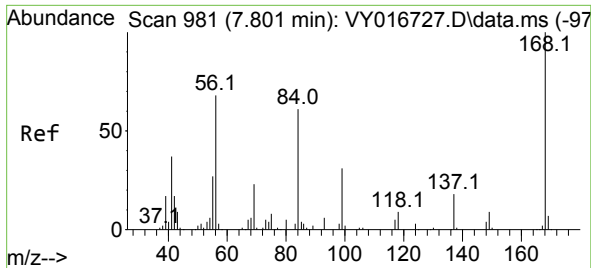
(#) = qualifier out of range (m) = manual integration (+) = signals summed

Data Path : Z:\voasrv\HPCHEM1\MSVOA_Y\Data\VY122723\
 Data File : VY016872.D
 Acq On : 27 Dec 2023 13:02
 Operator : SY/MD
 Sample : 06027-03
 Misc : 5.05g/5.0mL/MSVOA_Y/SOIL/A
 ALS Vial : 10 Sample Multiplier: 1

Instrument :
 MSVOA_Y
 ClientSampleId :
 PIERS

Quant Time: Dec 28 03:44:11 2023
 Quant Method : Z:\voasrv\HPCHEM1\MSVOA_Y\methods\82Y122023S.M
 Quant Title : SW846 8260
 QLast Update : Thu Dec 21 01:49:45 2023
 Response via : Initial Calibration

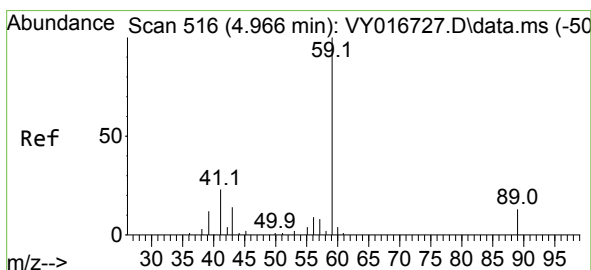
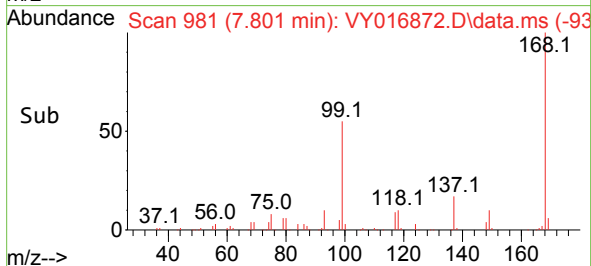
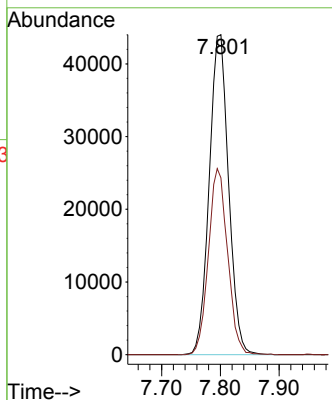
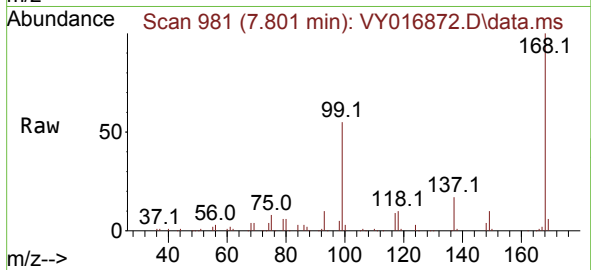




#1
 Pentafluorobenzene
 Concen: 50.000 ug/l
 RT: 7.801 min Scan# 91
 Delta R.T. -0.000 min
 Lab File: VY016872.D
 Acq: 27 Dec 2023 13:02

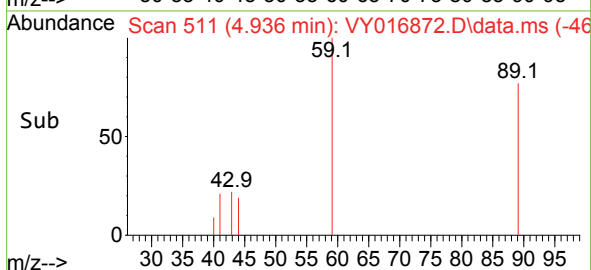
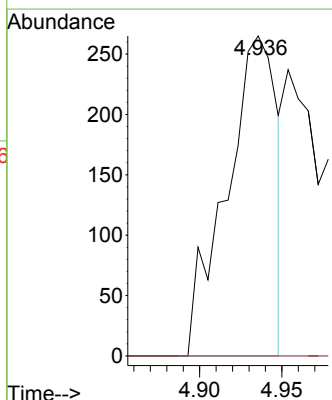
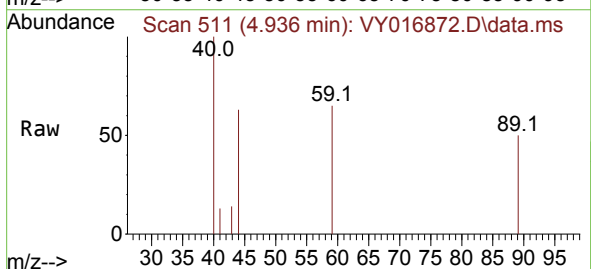
Instrument :
 MSVOA_Y
 ClientSampleId :
 PIERS

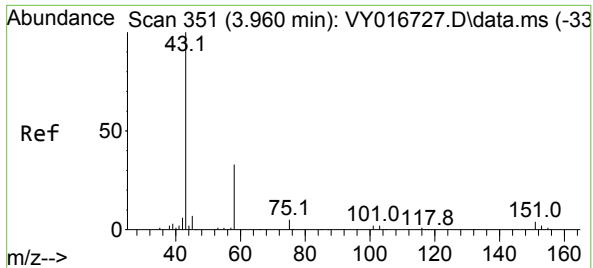
Tgt Ion:168 Resp: 100698
 Ion Ratio Lower Upper
 168 100
 99 55.3 44.2 66.4



#11
 Tert butyl alcohol
 Concen: 7.509 ug/l
 RT: 4.936 min Scan# 511
 Delta R.T. -0.030 min
 Lab File: VY016872.D
 Acq: 27 Dec 2023 13:02

Tgt Ion: 59 Resp: 566
 Ion Ratio Lower Upper
 59 100
 57 0.0 7.4 11.0#

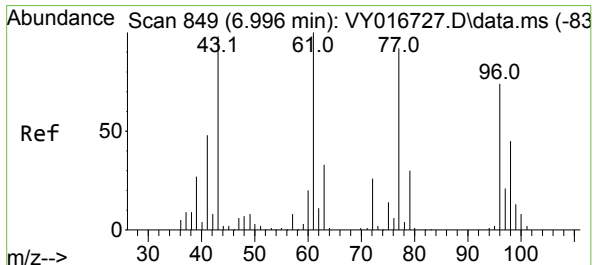
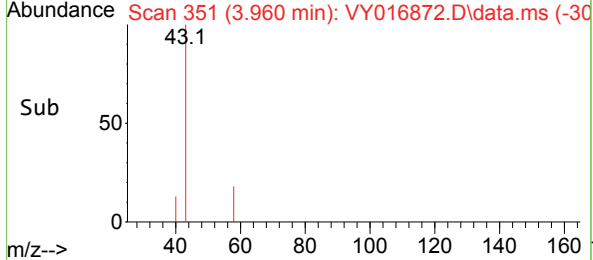
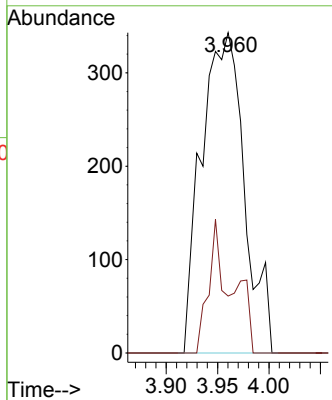
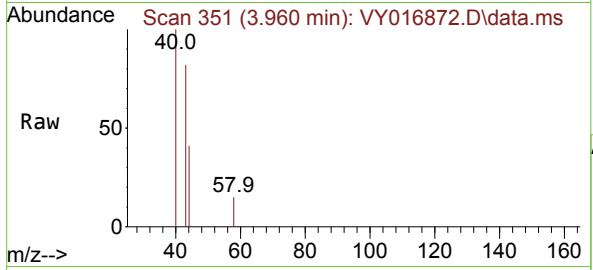




#16
 Acetone
 Concen: 4.003 ug/l
 RT: 3.960 min Scan# 31
 Delta R.T. 0.000 min
 Lab File: VY016872.D
 Acq: 27 Dec 2023 13:02

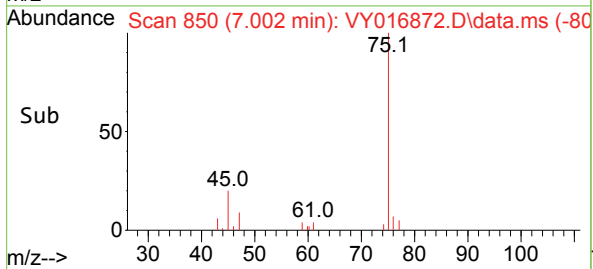
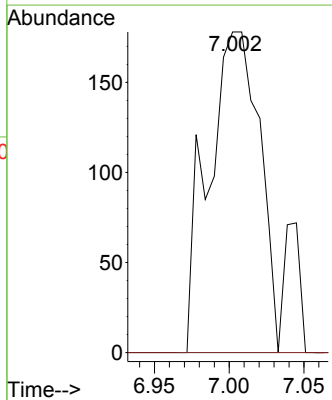
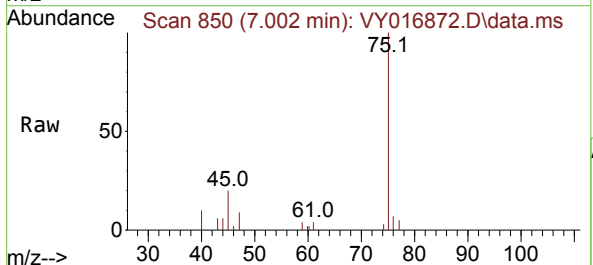
Instrument : MSVOA_Y
 ClientSampleId : PIER5

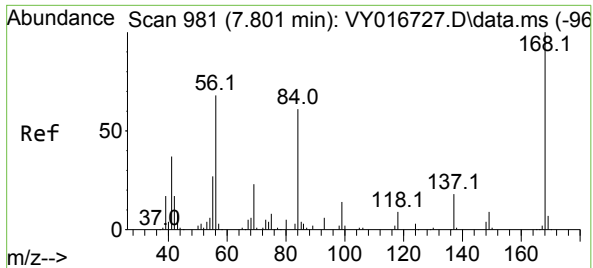
Tgt Ion: 43 Resp: 995
 Ion Ratio Lower Upper
 43 100
 58 17.8 26.6 39.8#



#25
 2-Butanone
 Concen: 1.245 ug/l
 RT: 7.002 min Scan# 850
 Delta R.T. 0.006 min
 Lab File: VY016872.D
 Acq: 27 Dec 2023 13:02

Tgt Ion: 43 Resp: 426
 Ion Ratio Lower Upper
 43 100
 72 0.0 21.4 32.2#



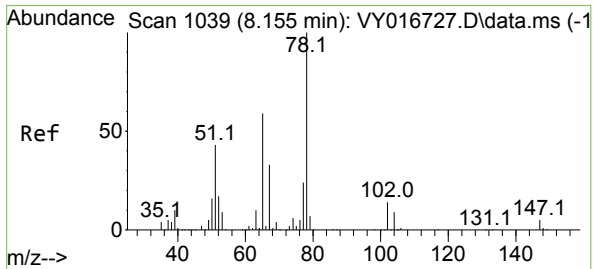
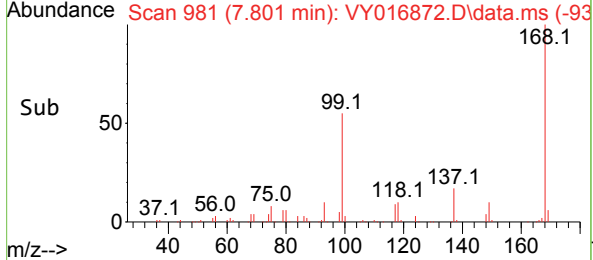
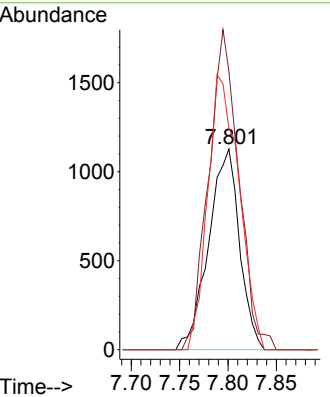
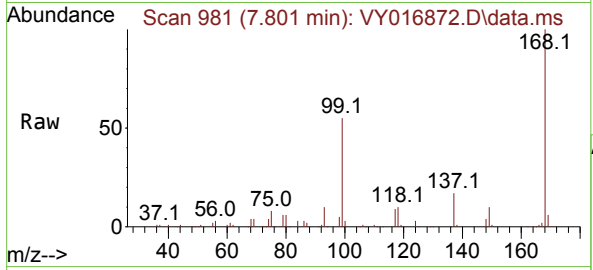


#31
 Cyclohexane
 Concen: 1.421 ug/l
 RT: 7.801 min Scan# 91
 Delta R.T. -0.000 min
 Lab File: VY016872.D
 Acq: 27 Dec 2023 13:02

Instrument : MSVOA_Y
 ClientSampleId : PIRS

Tgt Ion: 56 Resp: 2502

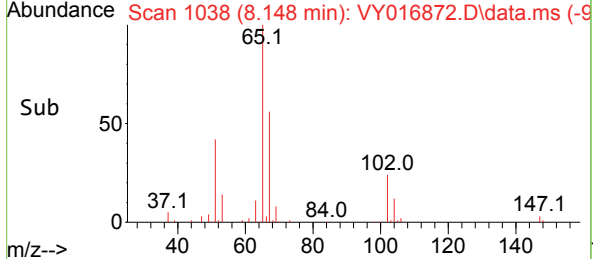
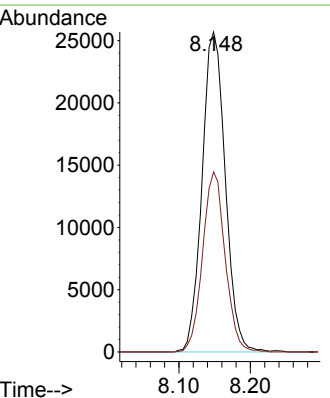
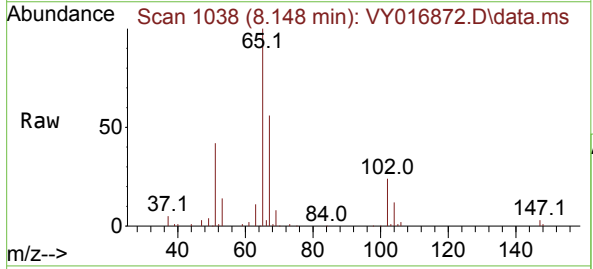
Ion	Ratio	Lower	Upper
56	100		
69	138.7	27.0	40.6#
84	110.2	71.8	107.6#

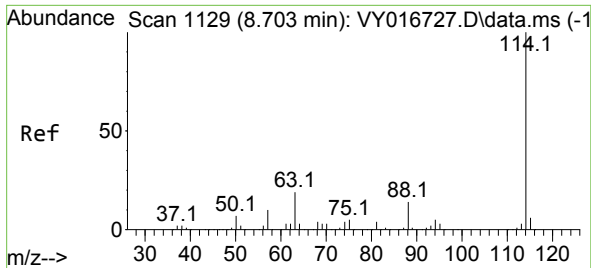


#33
 1,2-Dichloroethane-d4
 Concen: 63.064 ug/l
 RT: 8.148 min Scan# 1038
 Delta R.T. -0.006 min
 Lab File: VY016872.D
 Acq: 27 Dec 2023 13:02

Tgt Ion: 65 Resp: 57973

Ion	Ratio	Lower	Upper
65	100		
67	54.6	0.0	109.0



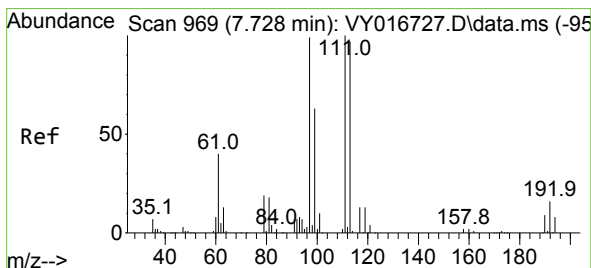
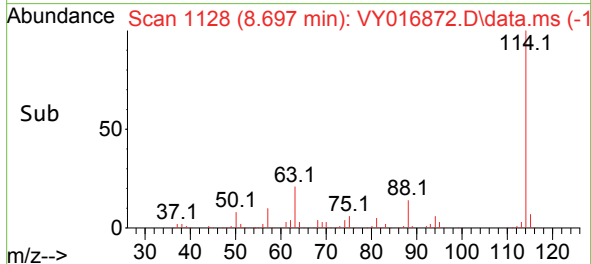
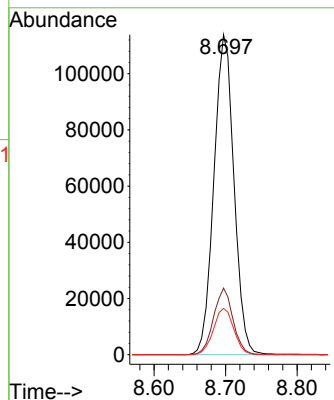
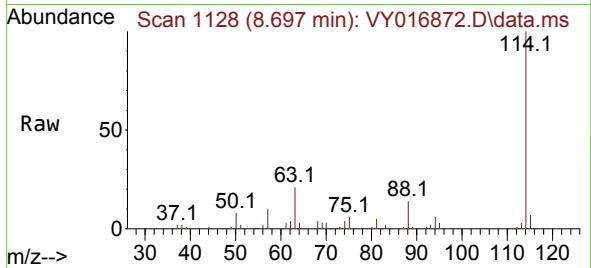


#34
 1,4-Difluorobenzene
 Concen: 50.000 ug/l
 RT: 8.697 min Scan# 1128
 Delta R.T. -0.006 min
 Lab File: VY016872.D
 Acq: 27 Dec 2023 13:02

Instrument :
 MSVOA_Y
 ClientSampleId :
 PIERS

Tgt Ion:114 Resp: 221723

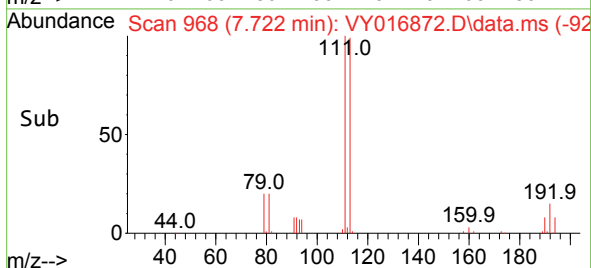
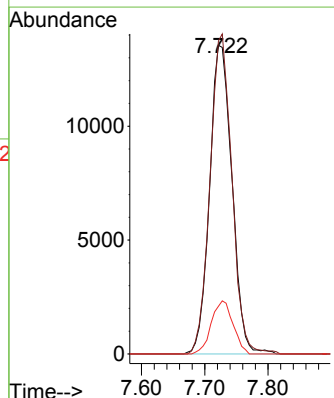
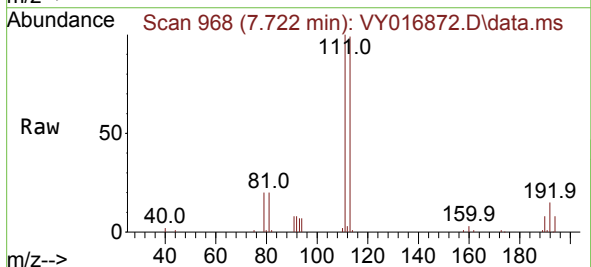
Ion	Ratio	Lower	Upper
114	100		
63	20.8	0.0	37.4
88	14.5	0.0	29.0

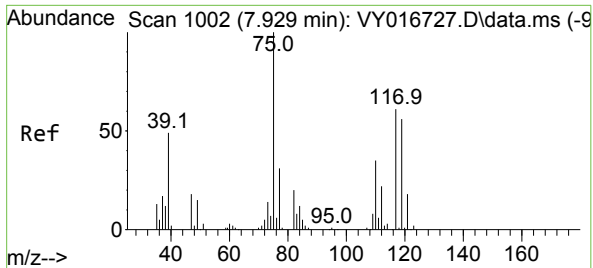


#35
 Dibromofluoromethane
 Concen: 26.201 ug/l
 RT: 7.722 min Scan# 968
 Delta R.T. -0.006 min
 Lab File: VY016872.D
 Acq: 27 Dec 2023 13:02

Tgt Ion:113 Resp: 33277

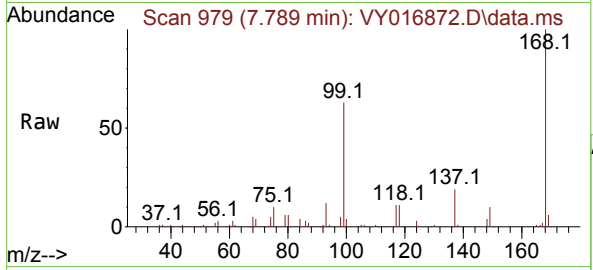
Ion	Ratio	Lower	Upper
113	100		
111	101.5	83.8	125.6
192	16.7	14.5	21.7





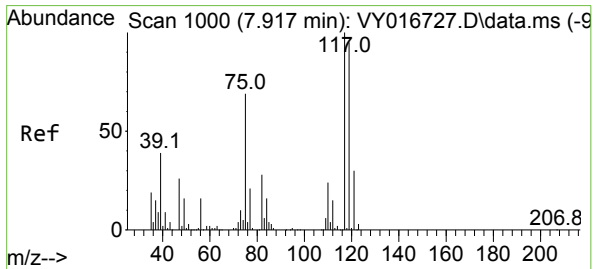
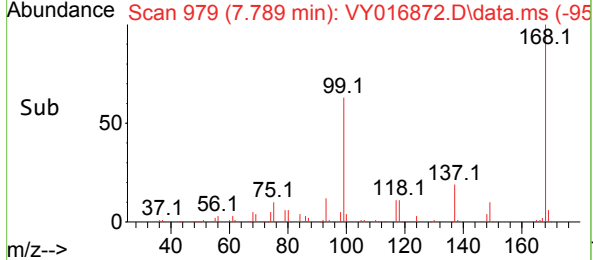
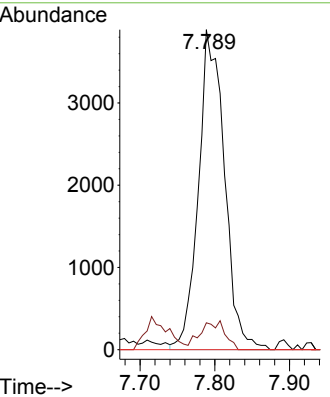
#36
 1,1-Dichloropropene
 Concen: 4.607 ug/l
 RT: 7.789 min Scan# 91
 Delta R.T. -0.140 min
 Lab File: VY016872.D
 Acq: 27 Dec 2023 13:02

Instrument : MSVOA_Y
 ClientSampleId : PIER5

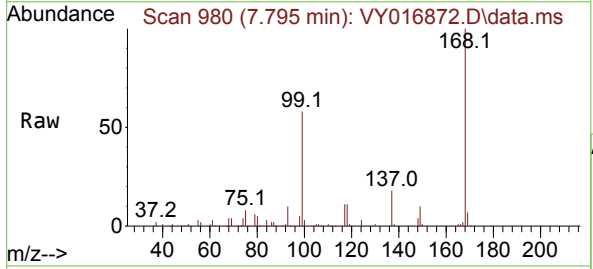


Tgt Ion: 75 Resp: 9381

Ion	Ratio	Lower	Upper
75	100		
110	8.4	17.4	52.3#
77	0.0	24.7	37.1#

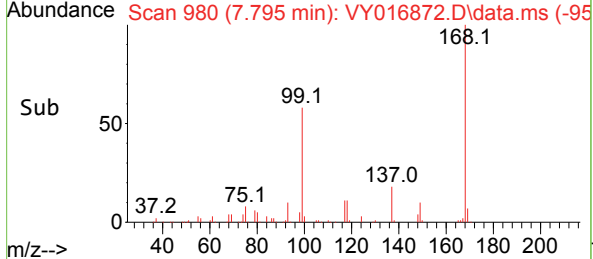
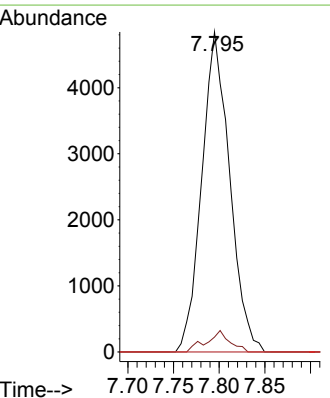


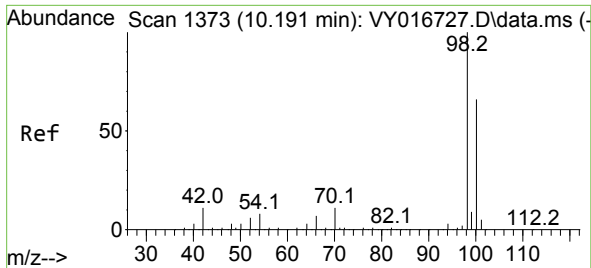
#38
 Carbon Tetrachloride
 Concen: 5.107 ug/l
 RT: 7.795 min Scan# 980
 Delta R.T. -0.122 min
 Lab File: VY016872.D
 Acq: 27 Dec 2023 13:02



Tgt Ion: 117 Resp: 10289

Ion	Ratio	Lower	Upper
117	100		
119	4.6	76.0	114.0#
121	0.0	24.2	36.2#

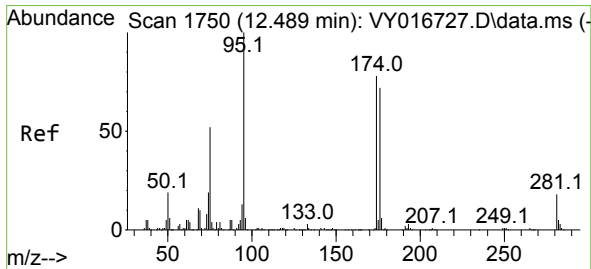
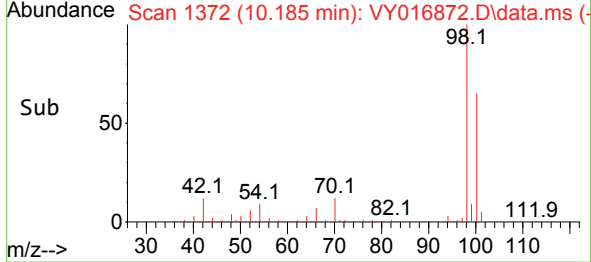
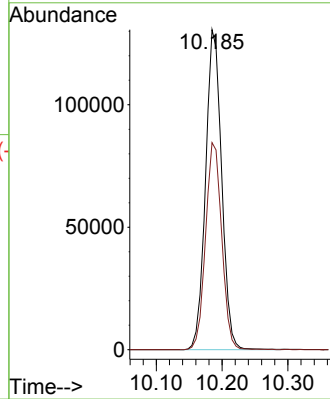
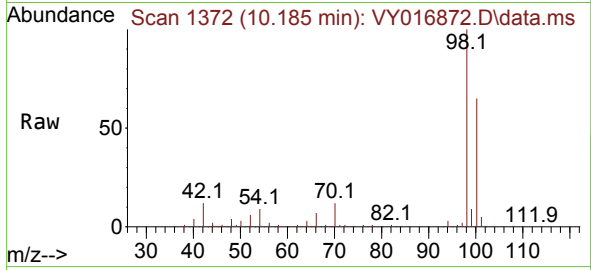




#50
 Toluene-d8
 Concen: 48.480 ug/l
 RT: 10.185 min Scan# 111
 Delta R.T. -0.006 min
 Lab File: VY016872.D
 Acq: 27 Dec 2023 13:02

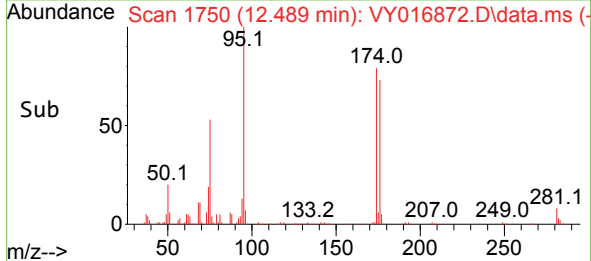
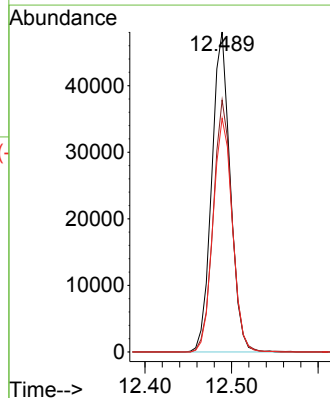
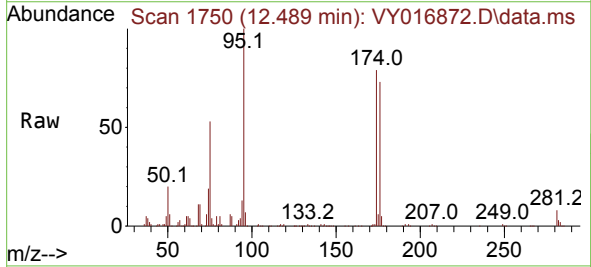
Instrument :
 MSVOA_Y
 ClientSampleId :
 PIERS

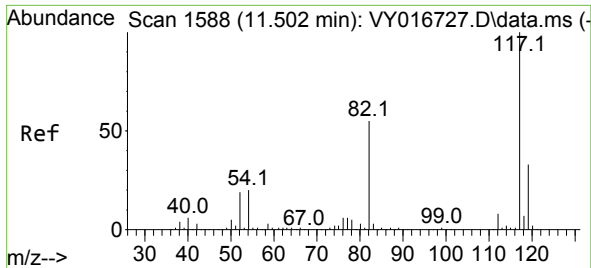
Tgt Ion: 98 Resp: 221968
 Ion Ratio Lower Upper
 98 100
 100 65.1 52.3 78.5



#62
 4-Bromofluorobenzene
 Concen: 47.983 ug/l
 RT: 12.489 min Scan# 1750
 Delta R.T. -0.000 min
 Lab File: VY016872.D
 Acq: 27 Dec 2023 13:02

Tgt Ion: 95 Resp: 71274
 Ion Ratio Lower Upper
 95 100
 174 80.0 0.0 160.0
 176 76.4 0.0 151.8



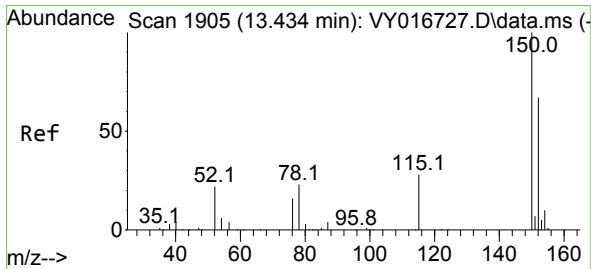
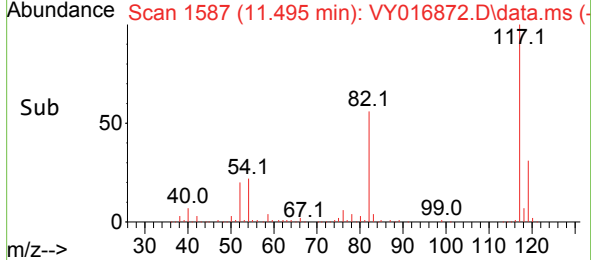
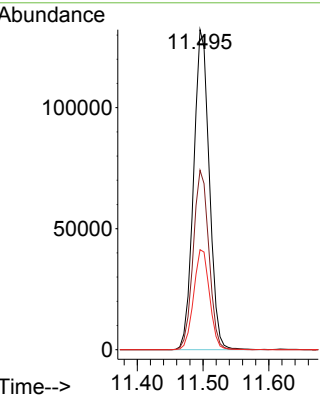
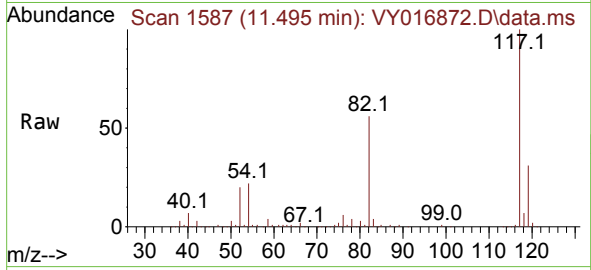


#63
 Chlorobenzene-d5
 Concen: 50.000 ug/l
 RT: 11.495 min Scan# 111
 Delta R.T. -0.006 min
 Lab File: VY016872.D
 Acq: 27 Dec 2023 13:02

Instrument :
 MSVOA_Y
 ClientSampleId :
 PIERS

Tgt Ion:117 Resp: 219131

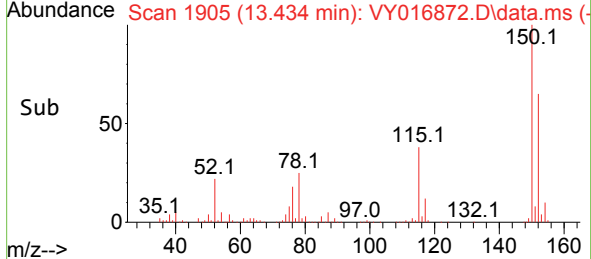
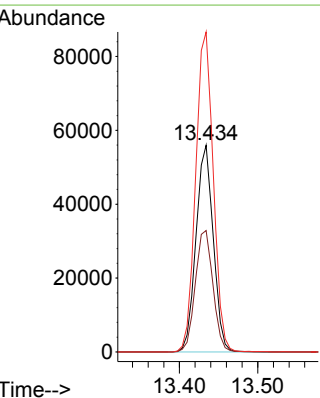
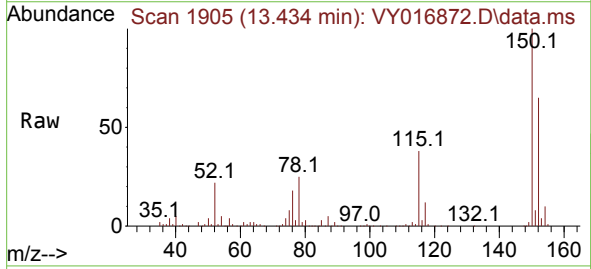
Ion	Ratio	Lower	Upper
117	100		
82	56.1	43.8	65.8
119	31.2	26.5	39.7

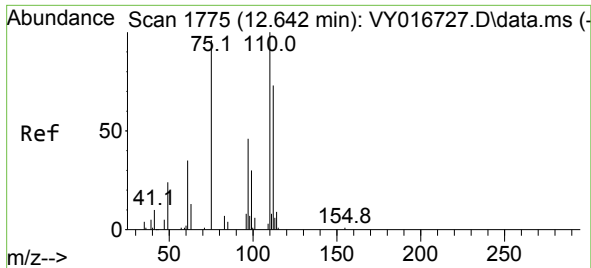


#72
 1,4-Dichlorobenzene-d4
 Concen: 50.000 ug/l
 RT: 13.434 min Scan# 1905
 Delta R.T. -0.000 min
 Lab File: VY016872.D
 Acq: 27 Dec 2023 13:02

Tgt Ion:152 Resp: 85650

Ion	Ratio	Lower	Upper
152	100		
115	60.1	30.0	90.0
150	157.5	0.0	344.6

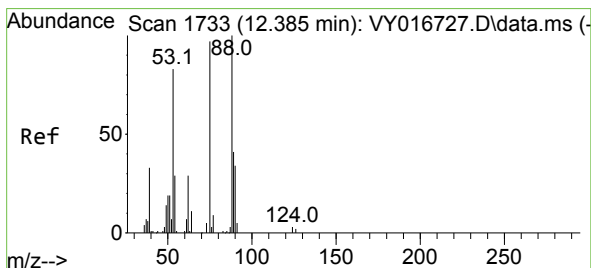
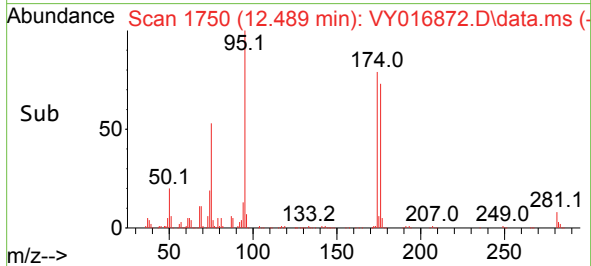
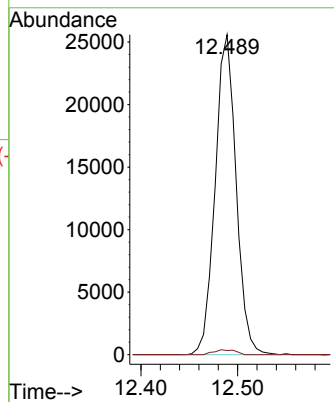
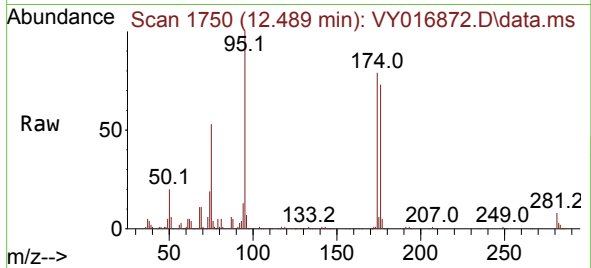




#76
 1,2,3-Trichloropropane
 Concen: 40.619 ug/l
 RT: 12.489 min Scan# 1750
 Delta R.T. -0.152 min
 Lab File: VY016872.D
 Acq: 27 Dec 2023 13:02

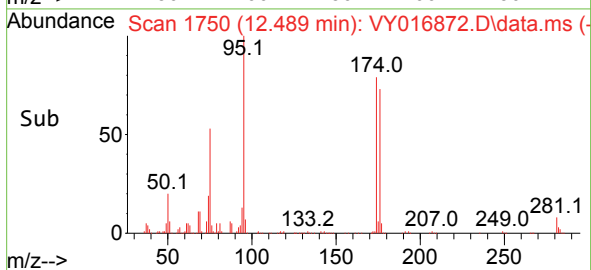
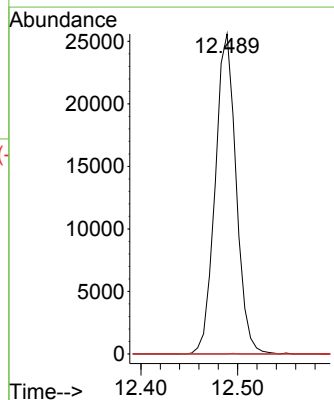
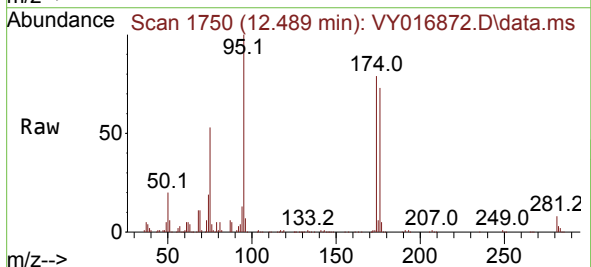
Instrument : MSVOA_Y
 ClientSampleId : PIER5

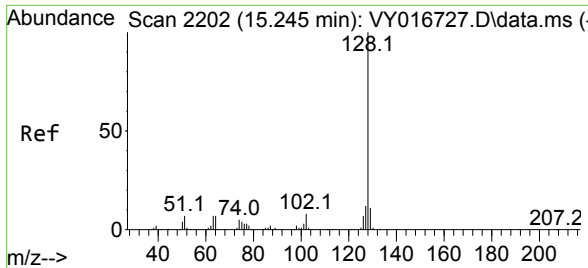
Tgt Ion: 75 Resp: 38459
 Ion Ratio Lower Upper
 75 100
 77 1.6 0.0 0.0#



#81
 trans-1,4-Dichloro-2-butene
 Concen: 95.392 ug/l
 RT: 12.489 min Scan# 1750
 Delta R.T. 0.104 min
 Lab File: VY016872.D
 Acq: 27 Dec 2023 13:02

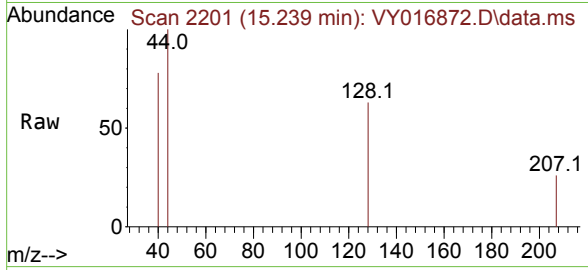
Tgt Ion: 75 Resp: 38459
 Ion Ratio Lower Upper
 75 100
 53 0.0 74.0 111.0#
 89 0.1 36.5 54.7#





#95
 Naphthalene
 Concen: 3.727 ug/l
 RT: 15.239 min Scan# 21
 Delta R.T. -0.006 min
 Lab File: VY016872.D
 Acq: 27 Dec 2023 13:02

Instrument :
 MSVOA_Y
 ClientSampleId :
 PIERS



Tgt Ion:128 Resp: 397

Ion	Ratio	Lower	Upper
128	100		
127	0.0	10.2	15.4#
129	0.0	8.6	12.8#

