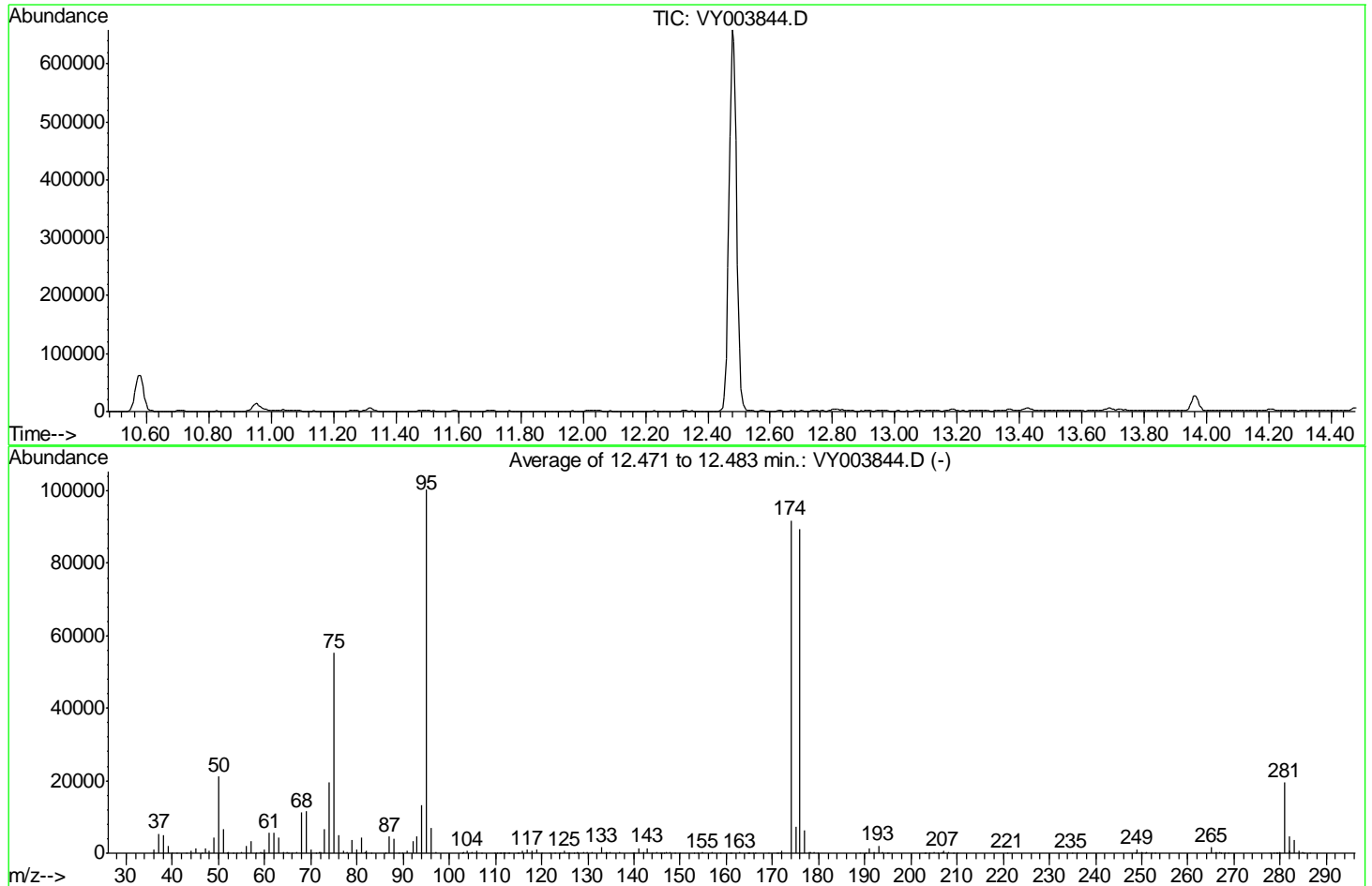


Data Path : Z:\voasrv\HPCHEM1\MSVOA Y\Data\VY122920\
 Data File : VY003844.D
 Acq On : 29 Dec 2020 09:37
 Operator : SY/MD
 Sample : BFB94
 Misc : 5.00G/5ML/MSVOA Y/SOIL
 ALS Vial : 1 Sample Multiplier: 1

Instrument :
 MSVOA_Y
 ClientSampleId :
 BFB94

Integration File: LSCINT.P

Method : Z:\VOASRV\HPCHEM1\MSVOA_Y\METHODS\SFAMYLEM122920SMA.M
 Title : VOC Analysis
 Last Update : Wed Dec 30 07:19:52 2020



AutoFind: Scans 1747, 1748, 1749; Background Corrected with Scan 1740

Target Mass	Rel. to Mass	Lower Limit%	Upper Limit%	Rel. Abn%	Raw Abn	Result Pass/Fail
50	95	15	40	21.1	21176	PASS
75	95	30	80	55.1	55261	PASS
95	95	100	100	100.0	100288	PASS
96	95	5	9	7.0	7022	PASS
173	174	0.00	2	0.0	0	PASS
174	95	50	120	91.6	91861	PASS
175	174	5	9	8.0	7344	PASS
176	174	95	105	97.5	89568	PASS
177	176	5	10	6.9	6201	PASS

m/z	Abundance
36.10	1126.0
37.10	5031.0
38.10	4399.0
39.10	2049.0
40.00	225.0
40.90	75.0
43.00	117.0
44.10	743.0
45.00	1249.0
46.30	267.0
47.10	1151.0
48.10	588.0
49.00	4133.0
50.00	19296.0
51.10	5649.0
52.20	306.0
53.80	77.0
55.00	305.0
56.00	1835.0
57.10	2916.0
58.00	117.0
59.10	203.0
60.00	1117.0
61.10	4925.0
62.00	4682.0
63.10	3791.0
64.10	502.0
65.00	357.0
65.80	58.0
67.10	347.0
68.00	10417.0
69.00	9464.0
70.00	894.0
71.00	64.0
71.90	578.0
73.00	4494.0
74.00	17520.0
75.10	48392.0
76.00	4301.0
77.00	698.0
77.90	310.0
79.00	3211.0
80.00	792.0
80.90	3744.0
81.80	855.0
87.00	4143.0
87.90	3305.0
89.80	68.0
90.90	582.0
92.10	3076.0
93.00	4600.0
94.00	11683.0
95.10	86224.0
96.00	6098.0
97.00	211.0
102.90	238.0
104.00	519.0
104.90	208.0
105.90	491.0
106.80	99.0
110.90	120.0
111.60	74.0
112.70	108.0
114.80	142.0
116.00	390.0
116.90	796.0
118.00	543.0
119.00	592.0
124.00	103.0
125.10	494.0
126.00	141.0
127.00	84.0
127.70	300.0
129.10	230.0
129.90	400.0
130.90	244.0
133.00	702.0
133.90	295.0
134.80	253.0
137.00	309.0
139.80	122.0
140.90	1199.0
142.00	233.0
142.90	1238.0
143.90	77.0
144.90	270.0
145.70	107.0
146.60	175.0
147.90	458.0
148.90	161.0
150.10	115.0
154.90	177.0

Instrument :
MSVOA_Y
ClientSampleId :
BFB94

157.00	83.0
158.80	223.0
160.80	228.0
162.90	219.0
164.70	59.0
165.10	90.0
170.90	125.0
171.70	426.0
172.10	388.0
174.00	71496.0
175.00	5398.0
175.90	67304.0
176.90	4563.0
177.80	211.0
179.00	227.0
191.00	645.0
192.00	211.0
193.10	776.0
193.90	156.0
194.70	99.0
205.00	163.0
206.90	582.0
208.10	136.0
209.00	112.0
234.80	65.0
236.00	80.0
248.80	523.0
249.80	90.0
250.10	70.0
250.70	224.0
265.10	670.0
266.10	292.0
266.90	351.0
268.00	111.0
281.00	7711.0
281.90	2426.0
283.10	1411.0
284.10	416.0
285.30	56.0
286.30	82.0

Instrument :
MSVOA_Y
ClientSampleId :
BFB94

m/z	Abundance
36.10	1178.0
37.10	5647.0
38.10	5750.0
39.10	2414.0
40.00	241.0
41.20	80.0
44.00	991.0
45.00	1271.0
46.20	83.0
47.20	1330.0
48.10	679.0
49.00	4874.0
50.10	24200.0
51.10	7634.0
52.10	239.0
53.10	75.0
53.80	95.0
55.00	428.0
56.00	2158.0
57.10	3607.0
57.90	196.0
59.00	222.0
59.30	271.0
60.00	1215.0
61.10	6479.0
62.00	6045.0
63.00	4696.0
64.00	482.0
64.90	480.0
65.90	84.0
67.10	386.0
68.00	12458.0
69.00	13708.0
70.00	926.0
71.10	84.0
71.90	606.0
73.00	7663.0
74.00	22336.0
75.10	64008.0
76.00	5730.0
77.10	671.0
77.80	379.0
79.00	4562.0
79.90	1434.0
81.00	4850.0
82.00	1239.0
83.20	96.0
86.20	213.0
87.00	4528.0
87.90	4771.0
89.70	68.0
91.00	591.0
92.00	3296.0
93.10	4893.0
94.00	15355.0
95.00	112816.0
96.00	8261.0
97.10	333.0
103.10	326.0
103.90	755.0
105.00	270.0
105.90	511.0
106.90	172.0
109.80	132.0
110.20	112.0
110.70	179.0
111.10	126.0
111.80	193.0
112.80	112.0
114.90	201.0
115.90	686.0
116.90	828.0
117.90	811.0
119.00	876.0
119.90	98.0
121.90	59.0
124.00	144.0
125.00	632.0
126.00	222.0
126.90	83.0
127.90	443.0
128.90	211.0
129.90	476.0
131.00	166.0
133.00	1545.0
134.10	386.0
134.90	276.0
136.90	399.0
140.00	151.0
141.00	1479.0
142.00	193.0
142.90	1642.0

Instrument :
MSVOA_Y
ClientSampleId :
BFB94

144.00	332.0
144.80	275.0
145.70	84.0
146.10	83.0
147.00	325.0
148.00	334.0
148.80	190.0
150.00	139.0
153.10	118.0
155.00	373.0
156.90	231.0
158.90	197.0
161.00	241.0
163.00	191.0
164.90	272.0
165.80	50.0
169.20	55.0
171.10	197.0
171.90	624.0
174.00	101616.0
175.00	8209.0
175.90	102864.0
176.90	7287.0
177.90	362.0
178.80	339.0
189.00	248.0
191.00	1432.0
192.10	331.0
193.00	2022.0
193.90	614.0
194.80	79.0
202.90	249.0
204.00	64.0
204.90	385.0
205.80	157.0
206.90	1170.0
207.90	200.0
209.00	155.0
234.90	154.0
236.10	50.0
249.00	1107.0
250.10	341.0
251.00	490.0
252.10	168.0
253.00	75.0
265.00	1419.0
265.90	613.0
267.20	289.0
268.60	50.0
277.90	59.0
279.00	76.0
280.00	387.0
281.00	16936.0
282.10	5016.0
283.10	4038.0
283.90	536.0
284.70	277.0
286.30	89.0

Instrument :
MSVOA_Y
ClientSampleId :
BFB94

m/z	Abundance
36.10	941.0
37.10	5293.0
38.10	4560.0
39.00	1977.0
40.10	177.0
41.00	74.0
43.00	235.0
44.10	839.0
45.10	1016.0
47.20	1457.0
47.90	658.0
49.00	4134.0
50.10	20032.0
51.00	6182.0
51.90	217.0
53.10	87.0
55.10	308.0
56.10	1651.0
57.10	3124.0
57.90	118.0
58.90	370.0
60.00	1067.0
61.00	5155.0
62.00	5743.0
63.10	4858.0
64.00	525.0
65.20	336.0
65.90	91.0
67.00	400.0
68.00	10816.0
69.00	11277.0
70.00	824.0
71.00	77.0
72.10	642.0
73.00	7290.0
74.10	18360.0
75.10	53384.0
76.10	4950.0
77.00	707.0
77.80	421.0
78.90	3426.0
80.00	1154.0
80.90	3992.0
82.00	955.0
83.10	137.0
86.20	145.0
87.00	4925.0
87.90	3743.0
89.00	271.0
91.00	498.0
92.00	3744.0
93.00	4920.0
94.10	13055.0
95.00	101824.0
96.10	6708.0
97.00	256.0
103.00	491.0
104.00	657.0
104.80	398.0
106.00	662.0
106.90	156.0
109.90	145.0
110.30	100.0
110.80	189.0
111.10	177.0
112.00	243.0
113.00	229.0
115.10	238.0
115.80	572.0
116.90	1036.0
118.00	1095.0
118.90	1057.0
119.80	80.0
122.80	69.0
124.00	141.0
124.90	710.0
125.70	255.0
127.80	376.0
128.90	210.0
129.90	391.0
130.90	316.0
133.00	2506.0
134.00	476.0
134.80	396.0
136.90	337.0
139.90	127.0
140.90	1588.0
142.10	219.0
143.00	1467.0
144.10	65.0
144.90	204.0
145.80	211.0

Instrument :
MSVOA_Y
ClientSampleId :
BFB94

146.90	401.0
147.80	384.0
148.70	132.0
149.90	108.0
153.00	136.0
153.90	91.0
154.90	361.0
156.80	289.0
158.80	95.0
160.90	246.0
163.00	533.0
164.80	138.0
166.20	51.0
169.30	57.0
170.90	98.0
172.10	728.0
174.00	102472.0
175.00	8427.0
176.00	98536.0
177.00	6754.0
178.10	550.0
178.90	467.0
179.80	116.0
188.90	246.0
190.20	88.0
191.10	1813.0
192.00	473.0
192.90	3604.0
194.00	742.0
195.10	451.0
203.10	270.0
205.00	551.0
205.80	141.0
207.10	1646.0
208.10	233.0
209.10	107.0
210.00	97.0
220.90	132.0
234.90	245.0
236.00	197.0
249.00	2082.0
249.90	830.0
251.00	857.0
252.00	214.0
252.90	175.0
265.10	2518.0
266.10	610.0
266.90	756.0
278.00	59.0
278.70	97.0
279.30	187.0
280.00	571.0
281.00	33824.0
282.00	9377.0
282.90	5409.0
284.10	885.0
284.80	263.0
285.10	243.0

Instrument :
MSVOA_Y
ClientSampleId :
BFB94

m/z	Abundance
40.00	102.0
41.10	60.0
43.10	89.0
44.20	193.0
207.00	281.0
281.10	98.0

Instrument :
MSVOA_Y
ClientSampleId :
BFB94