

Data Path : Z:\voasrv\HPCHEM1\MSVOA_Y\Data\VY021523\
 Data File : VY012612.D
 Acq On : 15 Feb 2023 14:06
 Operator : KP/MD
 Sample : 01552-09
 Misc : 5.04g/5.0mL/MSVOA_Y/SOIL
 ALS Vial : 13 Sample Multiplier: 1

Instrument :
 MSVOA_Y
 ClientSampleId :
 SB-05-4.0-6.0

Integration Parameters: RTEINT.P

Integrator: RTE
 Smoothing : ON Filtering: 5
 Sampling : 1 Min Area: 3 % of largest Peak
 Start Thrs: 0.2 Max Peaks: 100
 Stop Thrs : 0 Peak Location: TOP

If leading or trailing edge < 100 prefer < Baseline drop else tangent >
 Peak separation: 5

Method : Z:\voasrv\HPCHEM1\MSVOA_Y\methods\82Y020723S.M
 Title : SW846 8260

Signal : TIC: VY012612.D\data.ms

peak #	R.T. min	first scan	max scan	last scan	PK TY	peak height	corr. area	corr. % max.	% of total
1	4.704	460	473	486	rBV2	5165	16418	3.11%	0.578%
2	6.972	835	845	853	rBV	3202	8789	1.67%	0.309%
3	7.716	957	967	972	rBV	75196	177697	33.69%	6.254%
4	7.783	972	978	991	rVB	131874	304635	57.76%	10.721%
5	8.136	1026	1036	1048	rVB2	67876	148888	28.23%	5.240%
6	8.685	1118	1126	1135	rBV	197772	383370	72.69%	13.492%
7	10.179	1363	1371	1387	rBV	309688	527413	100.00%	18.561%
8	10.581	1429	1437	1442	rBV2	3072	5864	1.11%	0.206%
9	10.947	1491	1497	1508	rBV	9211	16676	3.16%	0.587%
10	11.490	1579	1586	1597	rBV	288694	469135	88.95%	16.510%
11	12.477	1742	1748	1758	rBV	212383	353806	67.08%	12.451%
12	13.422	1896	1903	1912	rBV	283169	428864	81.31%	15.093%

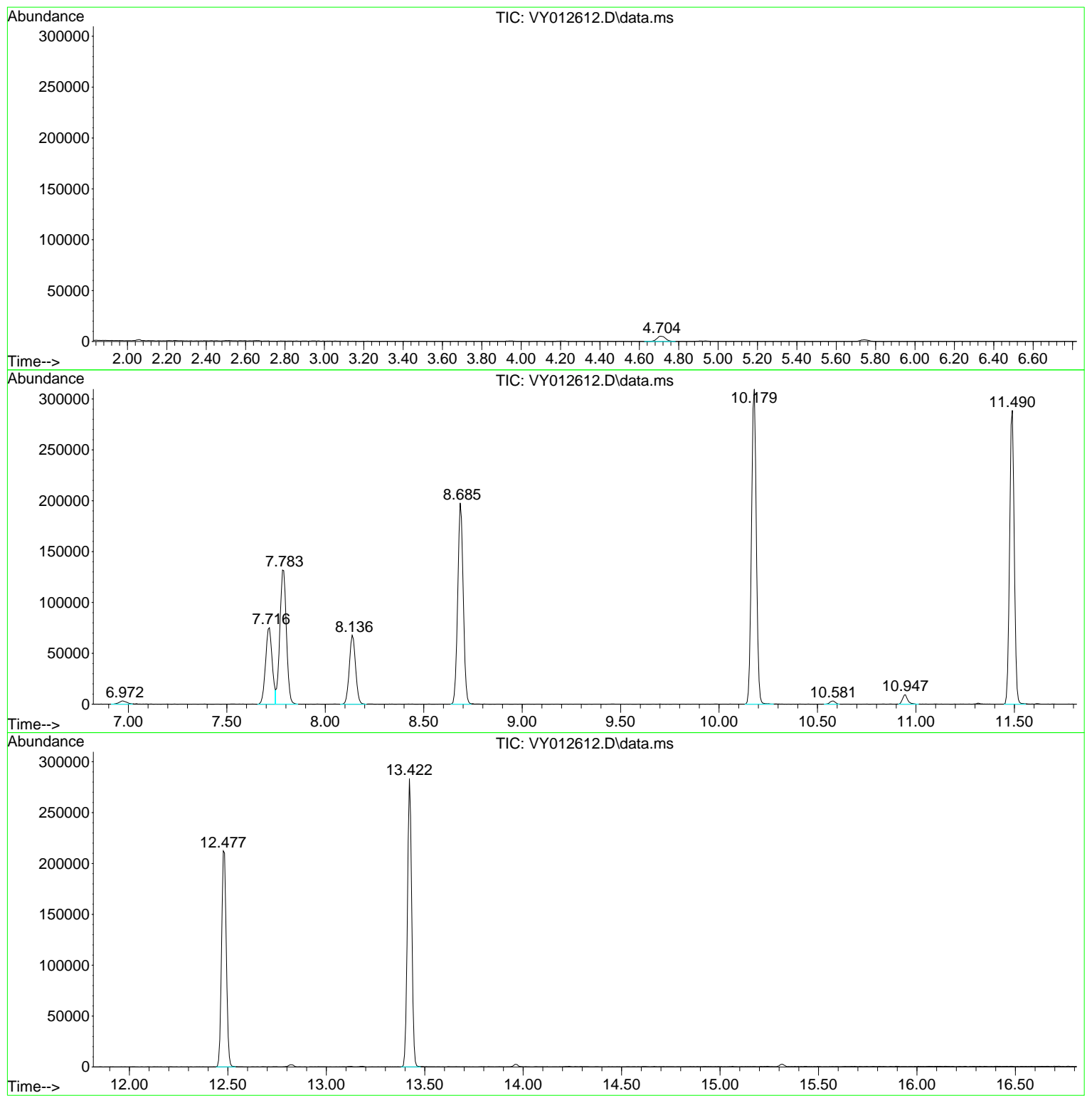
Sum of corrected areas: 2841555

Data Path : Z:\voasrv\HPCHEM1\MSVOA_Y\Data\VY021523\
 Data File : VY012612.D
 Acq On : 15 Feb 2023 14:06
 Operator : KP/MD
 Sample : 01552-09
 Misc : 5.04g/5.0mL/MSVOA_Y/SOIL
 ALS Vial : 13 Sample Multiplier: 1

Instrument :
 MSVOA_Y
ClientSampleId :
 SB-05-4.0-6.0

Quant Method : Z:\voasrv\HPCHEM1\MSVOA_Y\methods\82Y020723S.M
 Quant Title : SW846 8260

TIC Library : C:\Database\NIST20.L
 TIC Integration Parameters: LSCINT.P



Library Search Compound Report

Data Path : Z:\voasrv\HPCHEM1\MSVOA_Y\Data\VY021523\
Data File : VY012612.D
Acq On : 15 Feb 2023 14:06
Operator : KP/MD
Sample : 01552-09
Misc : 5.04g/5.0mL/MSVOA_Y/SOIL
ALS Vial : 13 Sample Multiplier: 1

Instrument :
MSVOA_Y
ClientSampleId :
SB-05-4.0-6.0

Quant Method : Z:\voasrv\HPCHEM1\MSVOA_Y\methods\82Y020723S.M
Quant Title : SW846 8260

TIC Library : C:\Database\NIST20.L
TIC Integration Parameters: LSCINT.P

No Library Search Compounds Detected

Data Path : Z:\voasrv\HPCHEM1\MSVOA_Y\Data\VY021523\
Data File : VY012612.D
Acq On : 15 Feb 2023 14:06
Operator : KP/MD
Sample : 01552-09
Misc : 5.04g/5.0mL/MSVOA_Y/SOIL
ALS Vial : 13 Sample Multiplier: 1

Instrument :
MSVOA_Y
ClientSampleId :
SB-05-4.0-6.0

Quant Method : Z:\voasrv\HPCHEM1\MSVOA_Y\methods\82Y020723S.M
Quant Title : SW846 8260

TIC Library : C:\Database\NIST0.L
TIC Integration Parameters: LSCINT.P

TIC Top Hit name	RT	EstConc	Units	Response	#	RT	Resp	Conc
------------------	----	---------	-------	----------	---	----	------	------
