

Data Path : Z:\VOASRV\HPCHEM1\MSVOA Y\DATA\VY021820\  
 Data File : VY001672.D  
 Acq On : 18 Feb 2020 15:43  
 Operator : SY/MD  
 Sample : L1548-02  
 Misc : 4.49G/5ML/MSVOA Y/SOIL  
 ALS Vial : 11 Sample Multiplier: 1

Instrument :  
 MSVOA\_Y  
 ClientSampleId :  
 FK-PS-01-063

Integration Parameters: RTEINT.P

Integrator: RTE  
 Smoothing : ON Filtering: 5  
 Sampling : 1 Min Area: 3 % of largest Peak  
 Start Thrs: 0.2 Max Peaks: 100  
 Stop Thrs : 0 Peak Location: TOP

If leading or trailing edge < 100 prefer < Baseline drop else tangent >  
 Peak separation: 5

Method : Z:\VOASRV\HPCHEM1\MSVOA\_Y\METHODS\82Y021720S.M  
 Title : SW846 8260

Signal : TIC

peak #	R.T. min	first scan	max scan	last scan	PK TY	peak height	corr. area	corr. % max.	% of total
1	2.262	77	86	91	rBV4	4601	11006	1.19%	0.231%
2	4.755	486	495	507	rVB2	4537	14044	1.52%	0.295%
3	7.541	939	952	963	rBV	82947	203954	22.07%	4.277%
4	7.748	975	986	992	rBV	118934	284829	30.82%	5.973%
5	7.822	992	998	1011	rVB	204747	460237	49.80%	9.652%
6	8.169	1047	1055	1067	rBV	126402	283799	30.71%	5.952%
7	8.712	1135	1144	1156	rBV	334436	660076	71.42%	13.843%
8	9.516	1270	1276	1283	rVB	13576	24144	2.61%	0.506%
9	10.199	1380	1388	1398	rBV	528358	924179	100.00%	19.382%
10	11.504	1594	1602	1609	rBV	479266	756391	81.84%	15.863%
11	12.491	1757	1764	1772	rBV	336839	528079	57.14%	11.075%
12	13.436	1912	1919	1926	rVB	404343	617473	66.81%	12.950%

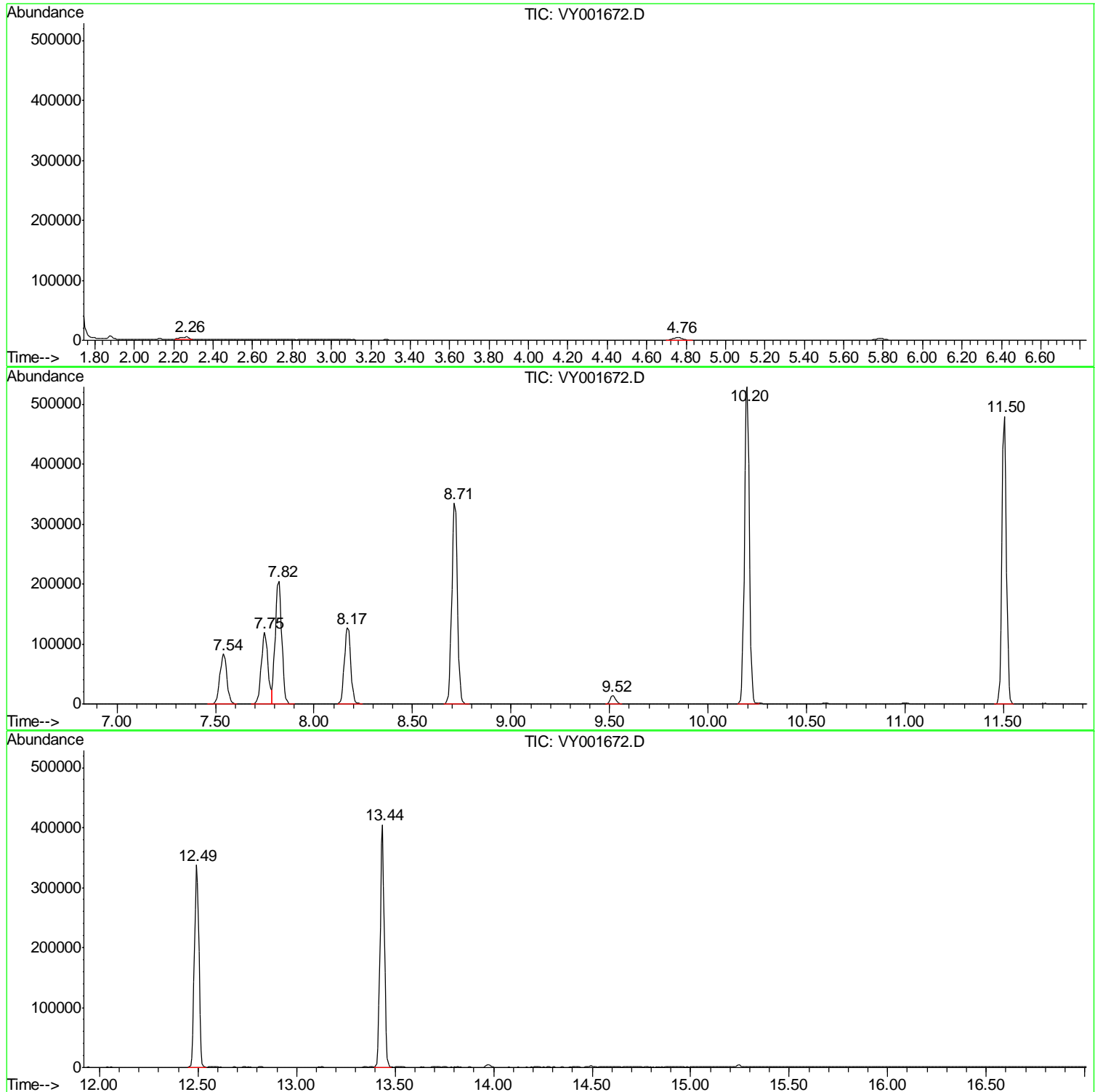
Sum of corrected areas: 4768211

Data Path : Z:\VOASRV\HPCHEM1\MSVOA Y\DATA\VY021820\  
Data File : VY001672.D  
Acq On : 18 Feb 2020 15:43  
Operator : SY/MD  
Sample : L1548-02  
Misc : 4.49G/5ML/MSVOA Y/SOIL  
ALS Vial : 11 Sample Multiplier: 1

Instrument :  
MSVOA\_Y  
ClientSampleId :  
FK-PS-01-063

Quant Method : Z:\VOASRV\HPCHEM1\MSVOA\_Y\METHODS\82Y021720S.M  
Quant Title : SW846 8260

TIC Library : C:\DATABASE\NIST11.L  
TIC Integration Parameters: LSCINT.P



Data Path : Z:\VOASRV\HPCHEM1\MSVOA\_Y\DATA\VY021820\  
Data File : VY001672.D  
Acq On : 18 Feb 2020 15:43  
Operator : SY/MD  
Sample : L1548-02  
Misc : 4.49G/5ML/MSVOA\_Y/SOIL  
ALS Vial : 11 Sample Multiplier: 1

Instrument :  
MSVOA\_Y  
ClientSampleId :  
FK-PS-01-063

Quant Method : Z:\VOASRV\HPCHEM1\MSVOA\_Y\METHODS\82Y021720S.M  
Quant Title : SW846 8260

TIC Library : C:\DATABASE\NIST11.L  
TIC Integration Parameters: LSCINT.P

No Library Search Compounds Detected

\*\*\*\*\*

Data Path : Z:\VOASRV\HPCHEM1\MSVOA\_Y\DATA\VY021820\  
Data File : VY001672.D  
Acq On : 18 Feb 2020 15:43  
Operator : SY/MD  
Sample : L1548-02  
Misc : 4.49G/5ML/MSVOA\_Y/SOIL  
ALS Vial : 11 Sample Multiplier: 1

Instrument :  
MSVOA\_Y  
ClientSampleId :  
FK-PS-01-063

Quant Method : Z:\VOASRV\HPCHEM1\MSVOA\_Y\METHODS\82Y021720S.M  
Quant Title : SW846 8260

TIC Library : C:\DATABASE\NIST11.L  
TIC Integration Parameters: LSCINT.P

TIC Top Hit name	RT	EstConc	Units	Response	--Internal Standard--			
					#	RT	Resp	Conc

---