

Data Path : Z:\voasrv\HPCHEM1\MSVOA_Y\Data\VY032823\
 Data File : VY013117.D
 Acq On : 28 Mar 2023 15:24
 Operator : KP/MD
 Sample : 02111-02
 Misc : 5.06g/5.0mL/MSVOA_Y/SOIL
 ALS Vial : 13 Sample Multiplier: 1

Instrument :
 MSVOA_Y
 ClientSampleId :
 APCS-EAST

Integration Parameters: RTEINT.P

Integrator: RTE
 Smoothing : ON Filtering: 5
 Sampling : 1 Min Area: 3 % of largest Peak
 Start Thrs: 0.2 Max Peaks: 100
 Stop Thrs : 0 Peak Location: TOP

If leading or trailing edge < 100 prefer < Baseline drop else tangent >
 Peak separation: 5

Method : Z:\voasrv\HPCHEM1\MSVOA_Y\methods\82Y030223S.M
 Title : SW846 8260

Signal : TIC: VY013117.D\data.ms

peak #	R.T. min	first scan	max scan	last scan	PK TY	peak height	corr. area	corr. % max.	% of total
1	4.716	462	475	488	rBV	11973	36310	8.40%	1.539%
2	5.747	637	644	655	rVB3	3983	11749	2.72%	0.498%
3	7.716	956	967	973	rBV	64074	153187	35.45%	6.493%
4	7.789	973	979	989	rVB	97812	216625	50.13%	9.182%
5	8.142	1026	1037	1049	rBV	66845	153848	35.60%	6.521%
6	8.691	1118	1127	1138	rBV	152575	304673	70.51%	12.914%
7	9.746	1292	1300	1308	rBV2	8004	15027	3.48%	0.637%
8	10.112	1355	1360	1364	rBV3	3114	5445	1.26%	0.231%
9	10.179	1364	1371	1388	rVB	259423	432118	100.00%	18.316%
10	10.581	1431	1437	1442	rBV	3047	5041	1.17%	0.214%
11	11.489	1579	1586	1597	rBV	235280	381696	88.33%	16.179%
12	12.483	1742	1749	1758	rBV	177299	279495	64.68%	11.847%
13	13.422	1895	1903	1910	rBV	220719	341659	79.07%	14.482%
14	13.965	1986	1992	1998	rBV2	7193	11517	2.67%	0.488%
15	15.318	2204	2214	2219	rBV	6136	10831	2.51%	0.459%

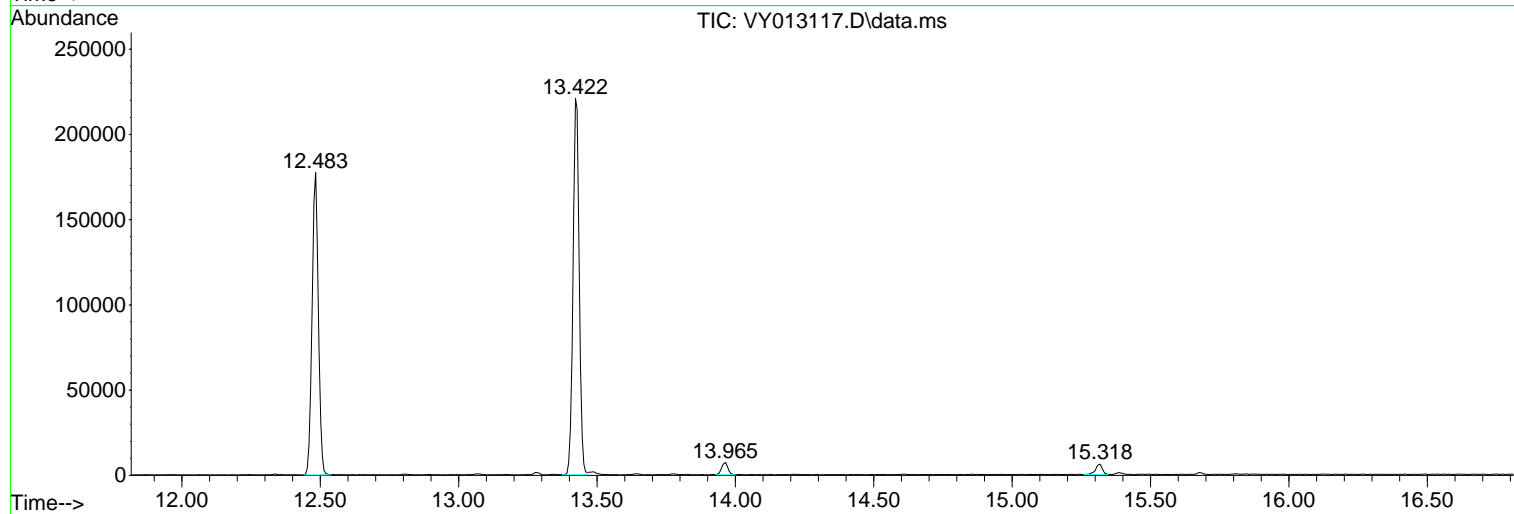
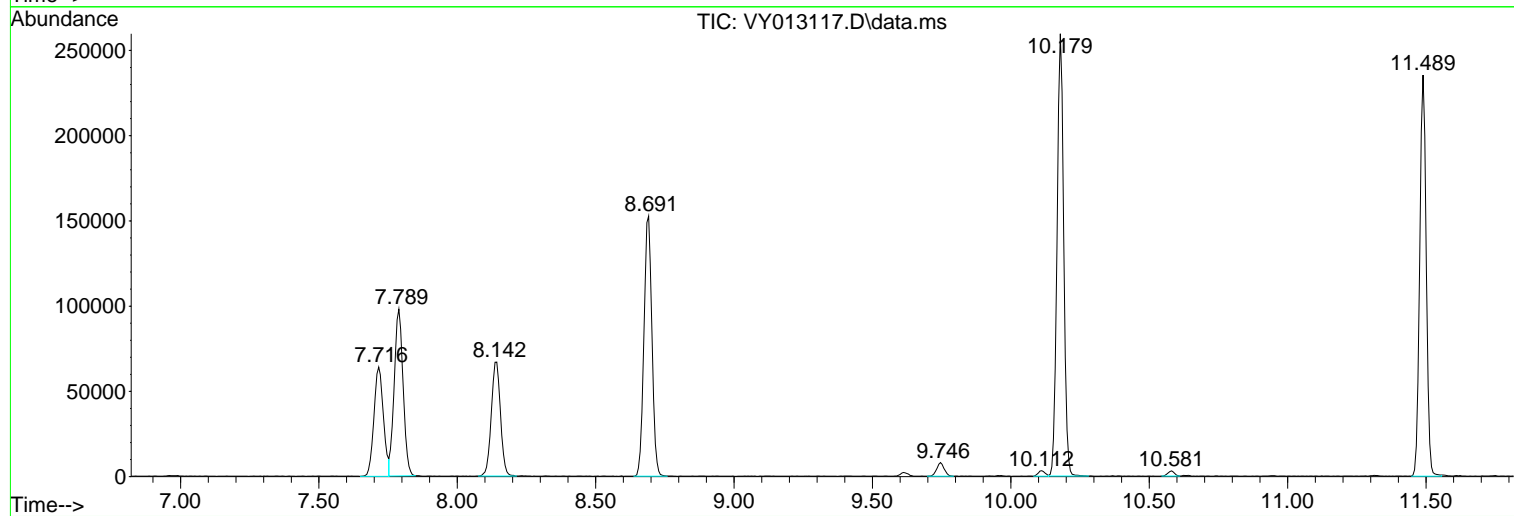
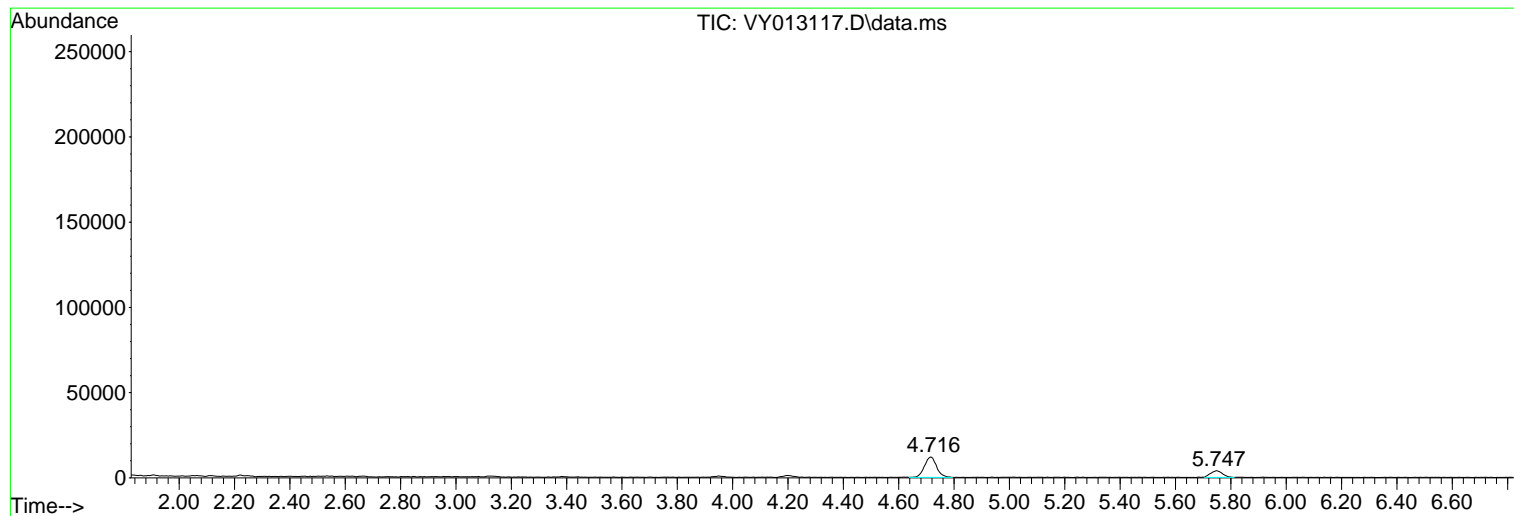
Sum of corrected areas: 2359221

Data Path : Z:\voasrv\HPCHEM1\MSVOA_Y\Data\VY032823\
Data File : VY013117.D
Acq On : 28 Mar 2023 15:24
Operator : KP/MD
Sample : 02111-02
Misc : 5.06g/5.0mL/MSVOA_Y/SOIL
ALS Vial : 13 Sample Multiplier: 1

Instrument :
MSVOA_Y
ClientSampleId :
APCS-EAST

Quant Method : Z:\voasrv\HPCHEM1\MSVOA_Y\methods\82Y030223S.M
Quant Title : SW846 8260

TIC Library : C:\Database\NIST0.L
TIC Integration Parameters: LSCINT.P



Library Search Compound Report

Data Path : Z:\voasrv\HPCHEM1\MSVOA_Y\Data\VY032823\
Data File : VY013117.D
Acq On : 28 Mar 2023 15:24
Operator : KP/MD
Sample : 02111-02
Misc : 5.06g/5.0mL/MSVOA_Y/SOIL
ALS Vial : 13 Sample Multiplier: 1

Instrument :
MSVOA_Y
ClientSampleId :
APCS-EAST

Quant Method : Z:\voasrv\HPCHEM1\MSVOA_Y\methods\82Y030223S.M
Quant Title : SW846 8260

TIC Library : C:\Database\NIST20.L
TIC Integration Parameters: LSCINT.P

No Library Search Compounds Detected

Data Path : Z:\voasrv\HPCHEM1\MSVOA_Y\Data\VY032823\
Data File : VY013117.D
Acq On : 28 Mar 2023 15:24
Operator : KP/MD
Sample : 02111-02
Misc : 5.06g/5.0mL/MSVOA_Y/SOIL
ALS Vial : 13 Sample Multiplier: 1

Instrument :
MSVOA_Y
ClientSampleId :
APCS-EAST

Quant Method : Z:\voasrv\HPCHEM1\MSVOA_Y\methods\82Y030223S.M
Quant Title : SW846 8260

TIC Library : C:\Database\NIST0.L
TIC Integration Parameters: LSCINT.P

TIC Top Hit name	RT	EstConc	Units	Response	--Internal Standard--		
					#	RT	Resp Conc
