

Data Path : Z:\voasrv\HPCHEM1\MSVOA_Y\Data\VY050223\
 Data File : VY013550.D
 Acq On : 02 May 2023 12:39
 Operator : KP/MD
 Sample : 02557-01
 Misc : 5.02g/5.0mL/MSVOA_Y/SOIL
 ALS Vial : 8 Sample Multiplier: 1

Instrument :
 MSVOA_Y
 ClientSampleId :
 JC-03-042823-A

Quant Time: May 03 01:32:49 2023
 Quant Method : Z:\voasrv\HPCHEM1\MSVOA_Y\methods\82Y042423S.M
 Quant Title : SW846 8260
 QLast Update : Tue Apr 25 02:39:58 2023
 Response via : Initial Calibration

Compound	R.T.	QIon	Response	Conc	Units	Dev(Min)

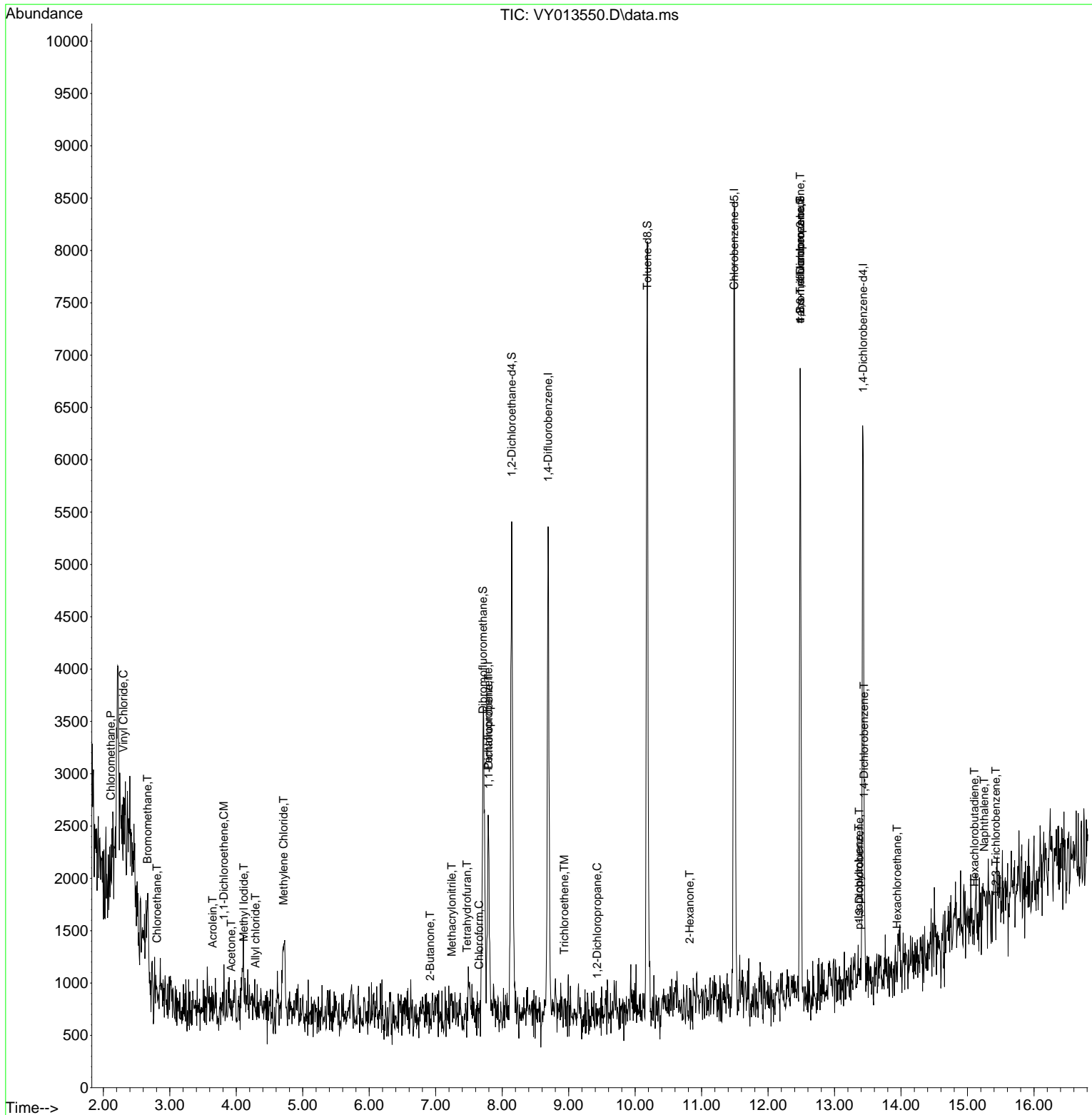
Internal Standards						
1) Pentafluorobenzene	7.789	168	1883	50.000	ug/l	# 0.00
34) 1,4-Difluorobenzene	8.691	114	4230	50.000	ug/l	0.00
63) Chlorobenzene-d5	11.489	117	4957	50.000	ug/l	# 0.00
72) 1,4-Dichlorobenzene-d4	13.428	152	1583	50.000	ug/l	0.00
System Monitoring Compounds						
33) 1,2-Dichloroethane-d4	8.143	65	3573	173.095	ug/l	0.00
Spiked Amount	50.000	Range 50 - 163	Recovery	=	346.200%#	
35) Dibromofluoromethane	7.710	113	2249	84.534	ug/l	0.00
Spiked Amount	50.000	Range 54 - 147	Recovery	=	169.060%#	
50) Toluene-d8	10.185	98	4761	50.304	ug/l	0.00
Spiked Amount	50.000	Range 58 - 134	Recovery	=	100.600%	
62) 4-Bromofluorobenzene	12.483	95	1719	53.876	ug/l	0.00
Spiked Amount	50.000	Range 30 - 143	Recovery	=	107.760%	
Target Compounds						
						Qvalue
3) Chloromethane	2.113	50	575	23.963	ug/l	# 85
4) Vinyl Chloride	2.302	62	47	1.967	ug/l	# 43
5) Bromomethane	2.662	94	398	20.904	ug/l	# 59
6) Chloroethane	2.808	64	23	1.393	ug/l	# 44
10) Methyl Iodide	4.113	142	923	36.197	ug/l	# 73
12) 1,1-Dichloroethene	3.814	96	20	1.022	ug/l	# 1
13) Acrolein	3.643	56	60	25.310	ug/l	# 16
14) Allyl chloride	4.290	41	41	1.129	ug/l	# 22
16) Acetone	3.924	43	58	7.135	ug/l	# 43
20) Methylene Chloride	4.710	84	479	12.789	ug/l	# 84
25) 2-Butanone	6.917	43	20	1.940	ug/l	# 47
29) Tetrahydrofuran	7.472	42	23	3.584	ug/l	# 32
30) Chloroform	7.655	83	43	1.093	ug/l	# 18
36) 1,1-Dichloropropene	7.795	75	165	3.737	ug/l	# 40
41) Methacrylonitrile	7.240	41	20	1.292	ug/l	# 30
44) Trichloroethene	8.935	130	57	1.723	ug/l	2
45) 1,2-Dichloropropane	9.429	63	70	2.152	ug/l	# 44
59) 2-Hexanone	10.819	43	42	1.849	ug/l	# 26
76) 1,2,3-Trichloropropane	12.483	75	913	42.766	ug/l	# 100
81) trans-1,4-Dichloro-2-b...	12.483	75	913	87.480	ug/l	# 12
86) p-Isopropyltoluene	13.367	119	103	1.008	ug/l	# 50
87) 1,3-Dichlorobenzene	13.373	146	56	1.013	ug/l	# 52
88) 1,4-Dichlorobenzene	13.446	146	202	3.618	ug/l	# 60
90) Hexachloroethane	13.940	117	28	1.302	ug/l	# 8
94) Hexachlorobutadiene	15.105	225	59	3.407	ug/l	# 19
95) Naphthalene	15.251	128	177	2.741	ug/l	# 69
96) 1,2,3-Trichlorobenzene	15.428	180	115	4.336	ug/l	# 45

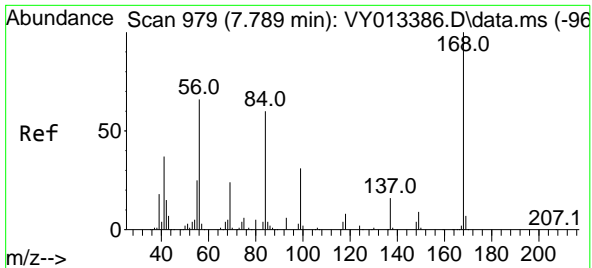
(#) = qualifier out of range (m) = manual integration (+) = signals summed

Data Path : Z:\voasrv\HPCHEM1\MSVOA_Y\Data\VY050223\
 Data File : VY013550.D
 Acq On : 02 May 2023 12:39
 Operator : KP/MD
 Sample : 02557-01
 Misc : 5.02g/5.0mL/MSVOA_Y/SOIL
 ALS Vial : 8 Sample Multiplier: 1

Instrument :
 MSVOA_Y
 ClientSampleId :
 JC-03-042823-A

Quant Time: May 03 01:32:49 2023
 Quant Method : Z:\voasrv\HPCHEM1\MSVOA_Y\methods\82Y042423S.M
 Quant Title : SW846 8260
 QLast Update : Tue Apr 25 02:39:58 2023
 Response via : Initial Calibration

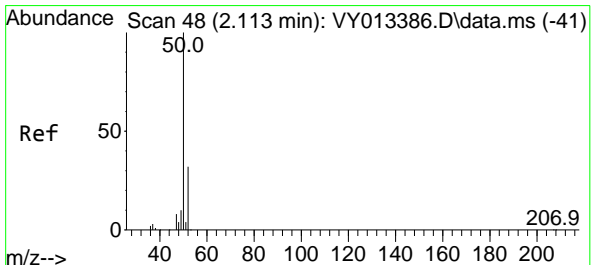
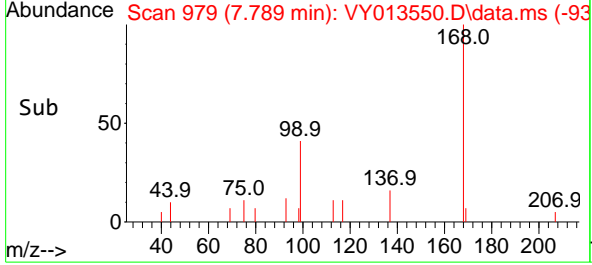
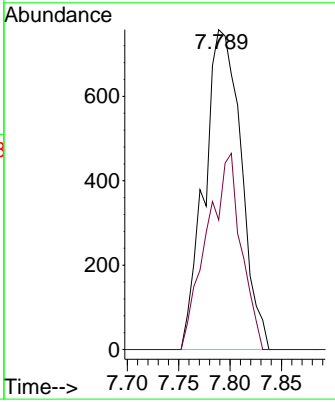
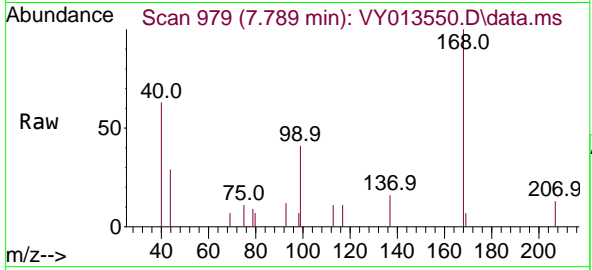




#1
 Pentafluorobenzene
 Concen: 50.000 ug/l
 RT: 7.789 min Scan# 91
 Delta R.T. -0.000 min
 Lab File: VY013550.D
 Acq: 02 May 2023 12:39

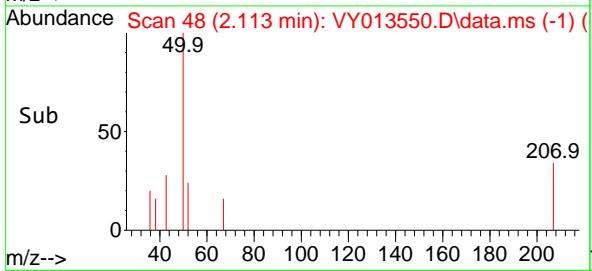
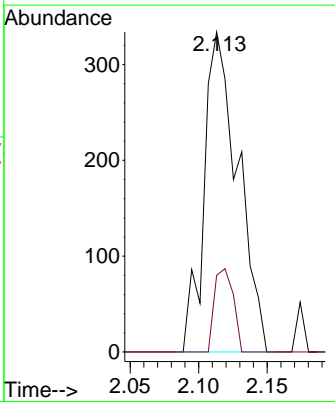
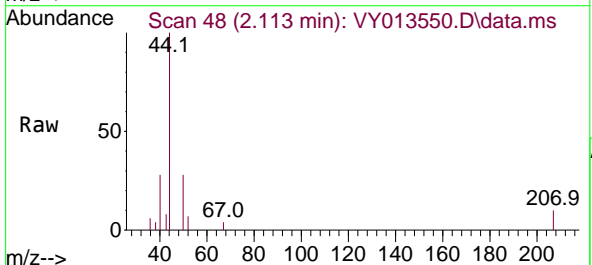
Instrument : MSVOA_Y
 ClientSampleId : JC-03-042823-A

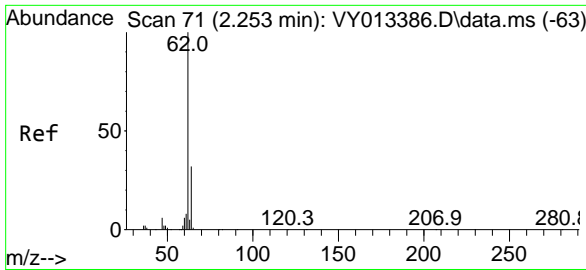
Tgt Ion:168 Resp: 1883
 Ion Ratio Lower Upper
 168 100
 99 40.5 41.8 62.6#



#3
 Chloromethane
 Concen: 23.963 ug/l
 RT: 2.113 min Scan# 48
 Delta R.T. 0.000 min
 Lab File: VY013550.D
 Acq: 02 May 2023 12:39

Tgt Ion: 50 Resp: 575
 Ion Ratio Lower Upper
 50 100
 52 24.0 25.9 38.9#

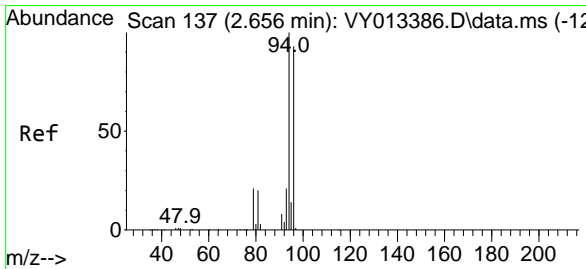
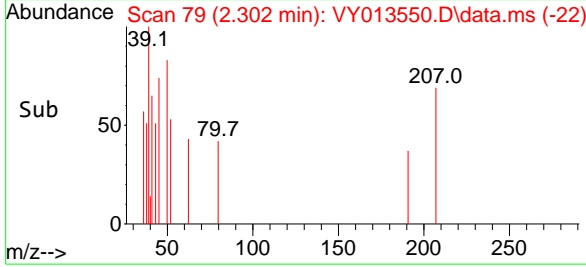
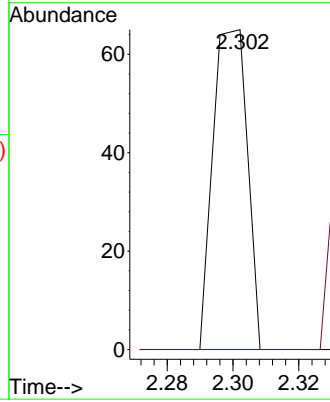
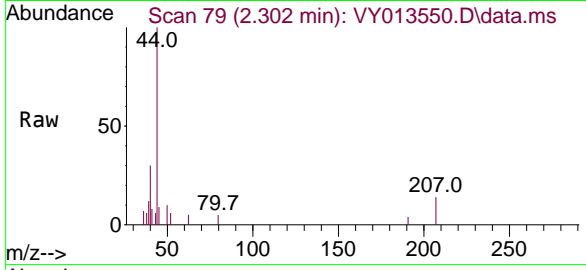




#4
 Vinyl Chloride
 Concen: 1.967 ug/l
 RT: 2.302 min Scan# 79
 Delta R.T. 0.049 min
 Lab File: VY013550.D
 Acq: 02 May 2023 12:39

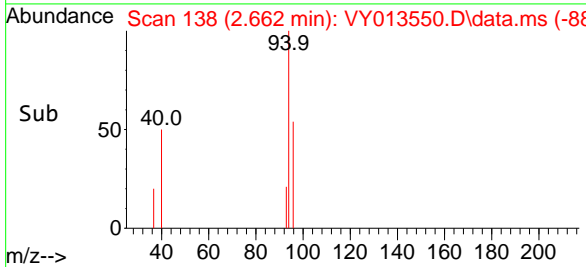
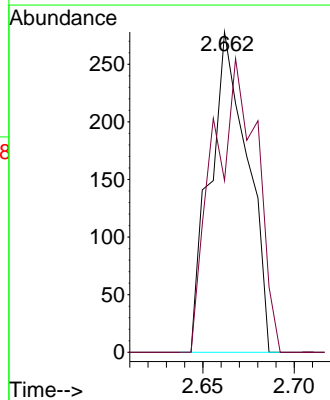
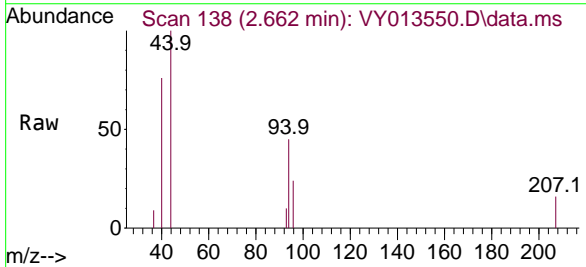
Instrument :
 MSVOA_Y
 ClientSampleId :
 JC-03-042823-A

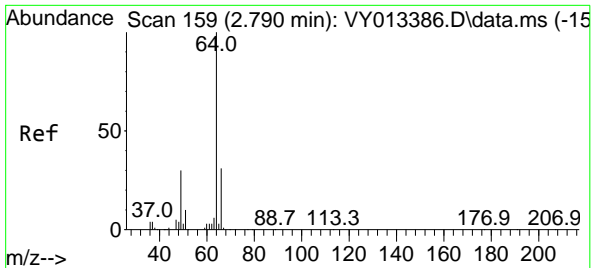
Tgt Ion: 62 Resp: 47
 Ion Ratio Lower Upper
 62 100
 64 0.0 25.4 38.0#



#5
 Bromomethane
 Concen: 20.904 ug/l
 RT: 2.662 min Scan# 138
 Delta R.T. 0.006 min
 Lab File: VY013550.D
 Acq: 02 May 2023 12:39

Tgt Ion: 94 Resp: 398
 Ion Ratio Lower Upper
 94 100
 96 53.6 74.2 111.2#

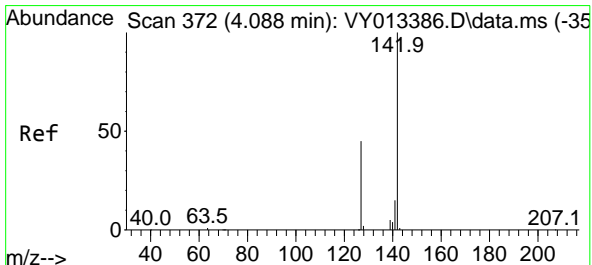
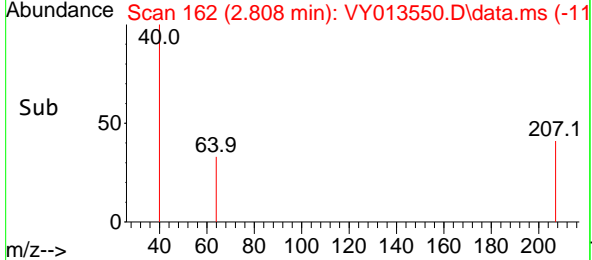
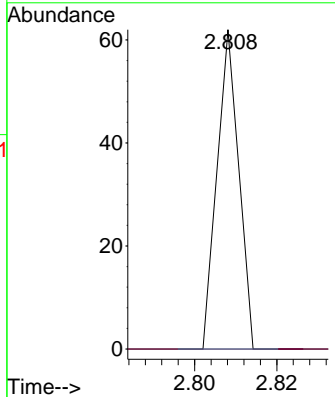
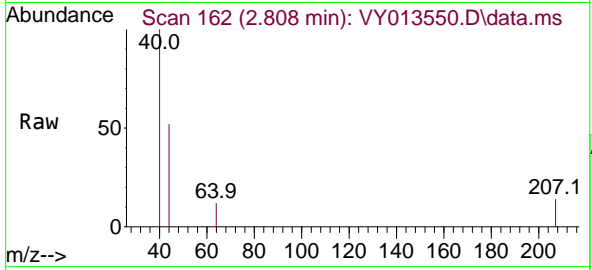




#6
 Chloroethane
 Concen: 1.393 ug/l
 RT: 2.808 min Scan# 11
 Delta R.T. 0.018 min
 Lab File: VY013550.D
 Acq: 02 May 2023 12:39

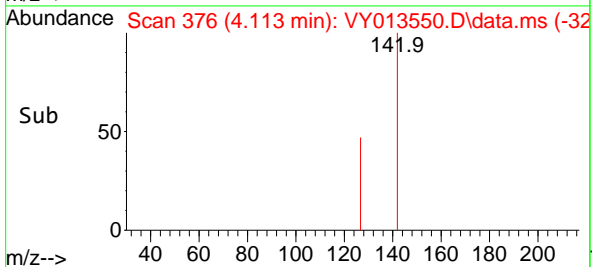
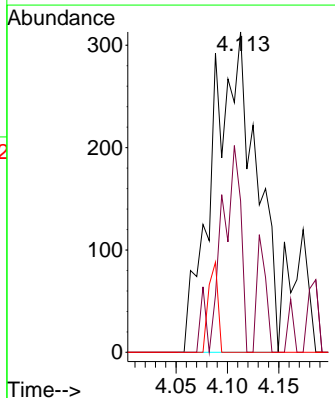
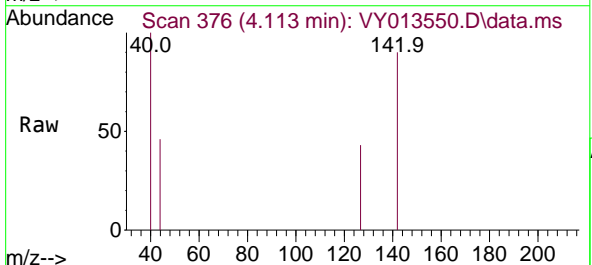
Instrument : MSVOA_Y
 ClientSampleId : JC-03-042823-A

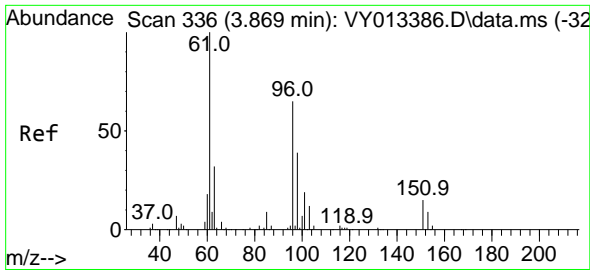
Tgt Ion: 64 Resp: 23
 Ion Ratio Lower Upper
 64 100
 66 0.0 24.6 37.0#



#10
 Methyl Iodide
 Concen: 36.197 ug/l
 RT: 4.113 min Scan# 376
 Delta R.T. 0.025 min
 Lab File: VY013550.D
 Acq: 02 May 2023 12:39

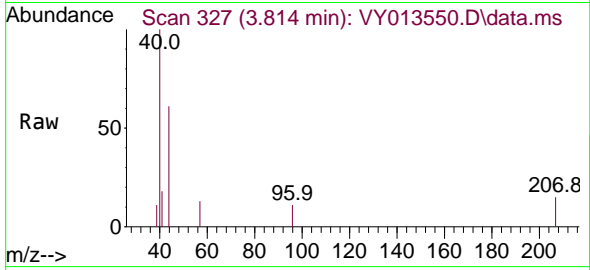
Tgt Ion:142 Resp: 923
 Ion Ratio Lower Upper
 142 100
 127 29.0 36.1 54.1#
 141 0.0 11.6 17.4#



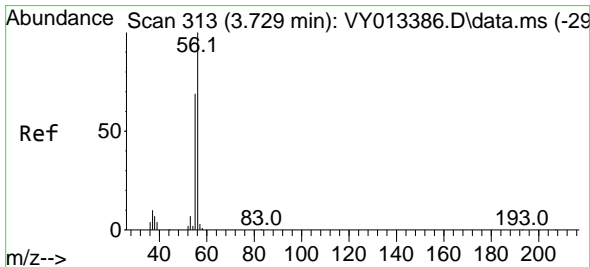
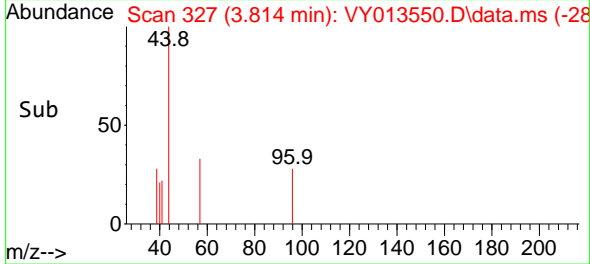
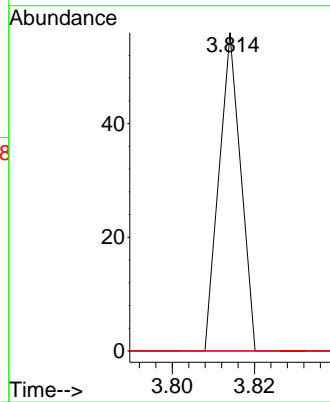


#12
 1,1-Dichloroethene
 Concen: 1.022 ug/l
 RT: 3.814 min Scan# 311
 Delta R.T. -0.055 min
 Lab File: VY013550.D
 Acq: 02 May 2023 12:39

Instrument :
 MSVOA_Y
 ClientSampleId :
 JC-03-042823-A

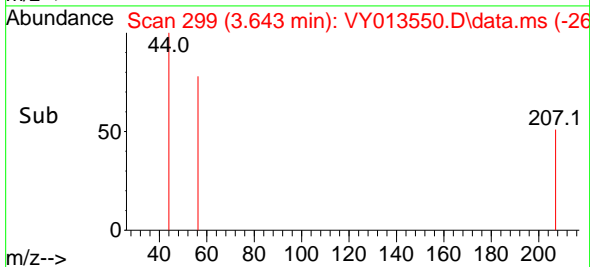
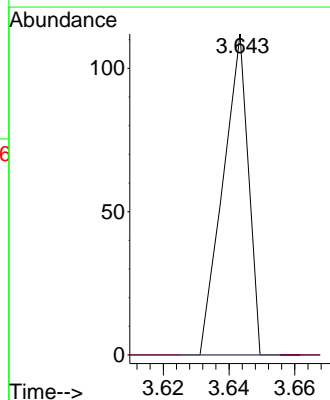
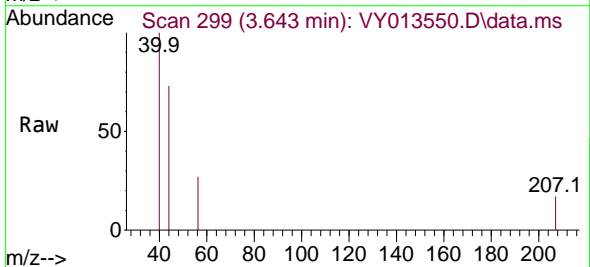


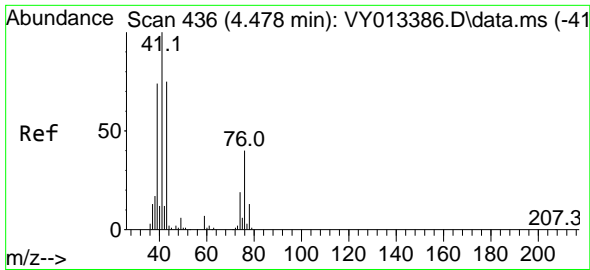
Tgt Ion: 96 Resp: 20
 Ion Ratio Lower Upper
 96 100
 61 0.0 123.9 185.9#
 98 0.0 48.9 73.3#



#13
 Acrolein
 Concen: 25.310 ug/l
 RT: 3.643 min Scan# 299
 Delta R.T. -0.086 min
 Lab File: VY013550.D
 Acq: 02 May 2023 12:39

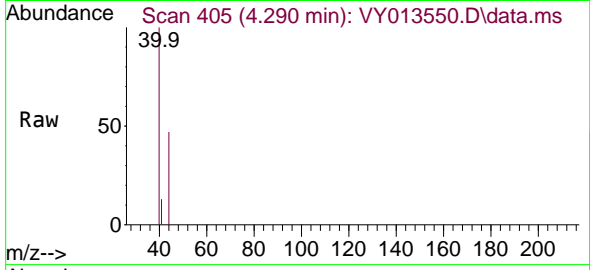
Tgt Ion: 56 Resp: 60
 Ion Ratio Lower Upper
 56 100
 55 0.0 54.1 81.1#





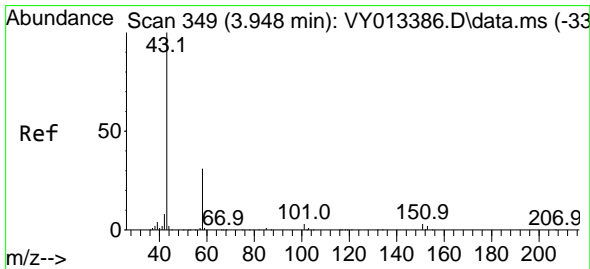
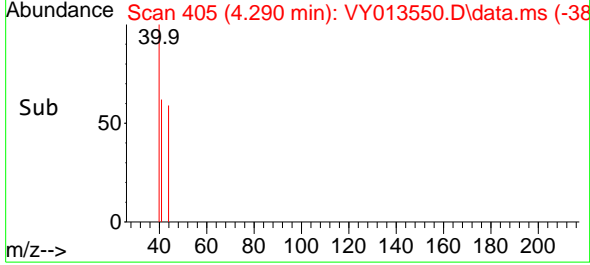
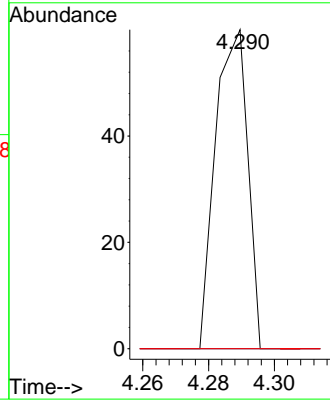
#14
 Allyl chloride
 Concen: 1.129 ug/l
 RT: 4.290 min Scan# 405
 Delta R.T. -0.188 min
 Lab File: VY013550.D
 Acq: 02 May 2023 12:39

Instrument : MSVOA_Y
 ClientSampleId : JC-03-042823-A



Tgt Ion: 41 Resp: 41

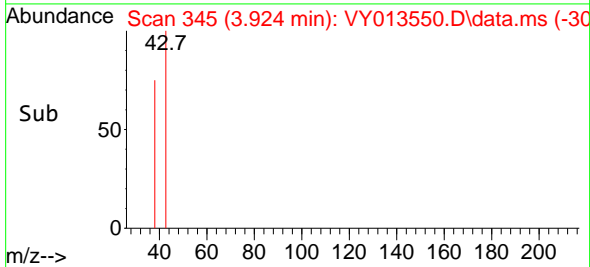
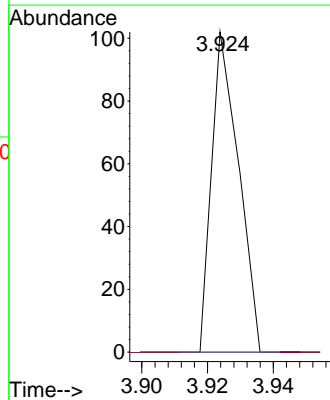
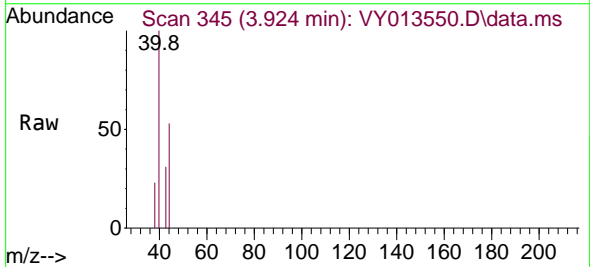
Ion	Ratio	Lower	Upper
41	100		
39	0.0	56.6	85.0#
76	0.0	30.5	45.7#

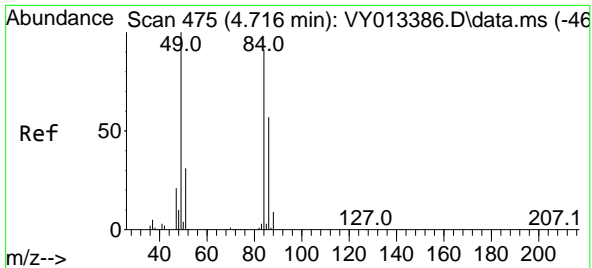


#16
 Acetone
 Concen: 7.135 ug/l
 RT: 3.924 min Scan# 345
 Delta R.T. -0.024 min
 Lab File: VY013550.D
 Acq: 02 May 2023 12:39

Tgt Ion: 43 Resp: 58

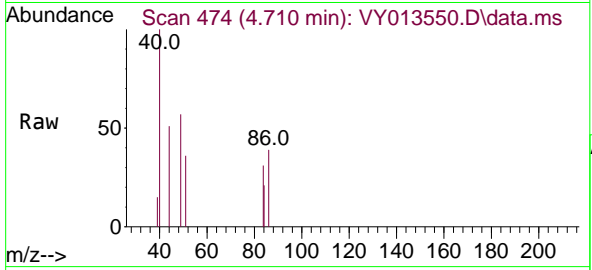
Ion	Ratio	Lower	Upper
43	100		
58	0.0	25.4	38.0#





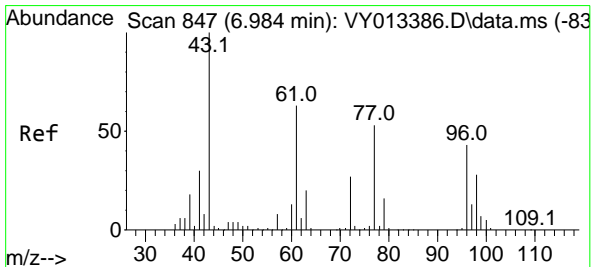
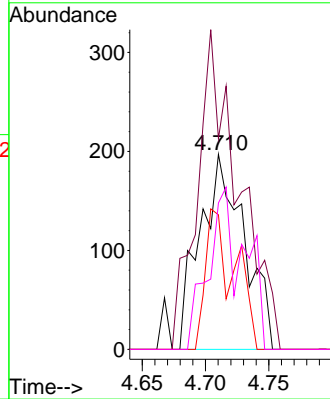
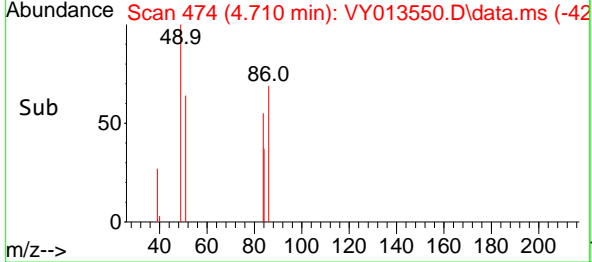
#20
 Methylene Chloride
 Concen: 12.789 ug/l
 RT: 4.710 min Scan# 41
 Delta R.T. -0.006 min
 Lab File: VY013550.D
 Acq: 02 May 2023 12:39

Instrument :
 MSVOA_Y
 ClientSampleId :
 JC-03-042823-A

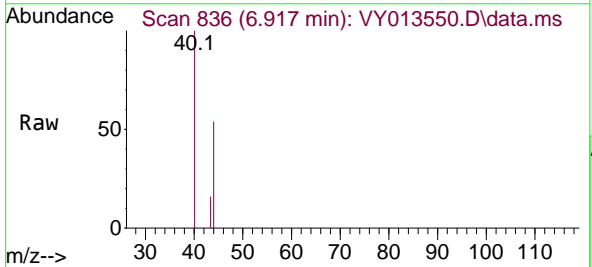


Tgt Ion: 84 Resp: 479

Ion	Ratio	Lower	Upper
84	100		
49	108.1	88.0	132.0
51	69.0	27.4	41.0#
86	75.1	50.4	75.6

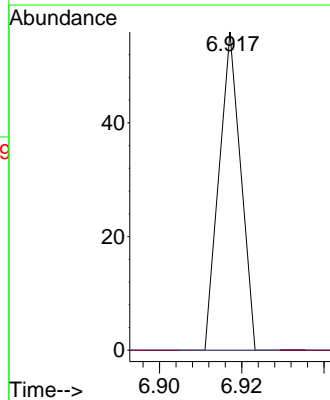
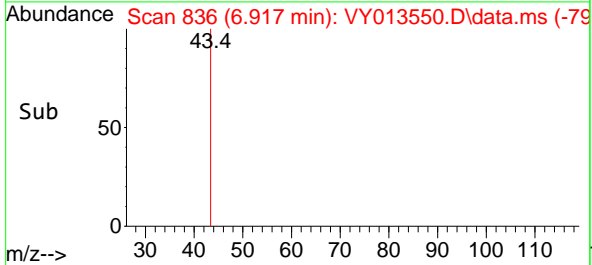


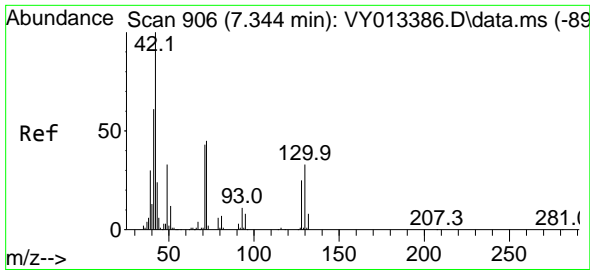
#25
 2-Butanone
 Concen: 1.940 ug/l
 RT: 6.917 min Scan# 836
 Delta R.T. -0.067 min
 Lab File: VY013550.D
 Acq: 02 May 2023 12:39



Tgt Ion: 43 Resp: 20

Ion	Ratio	Lower	Upper
43	100		
72	0.0	21.9	32.9#

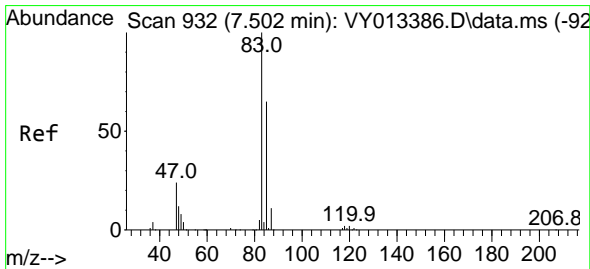
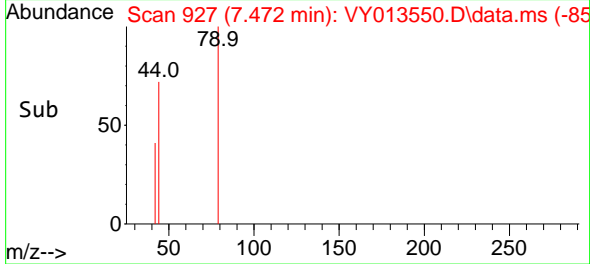
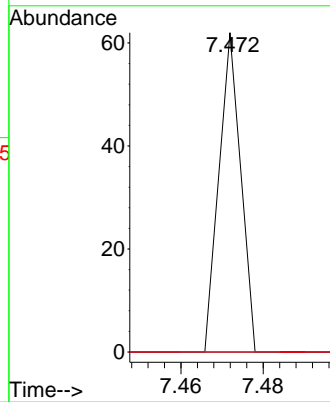
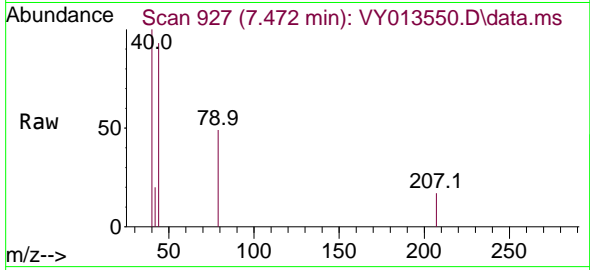




#29
 Tetrahydrofuran
 Concen: 3.584 ug/l
 RT: 7.472 min Scan# 911
 Delta R.T. 0.128 min
 Lab File: VY013550.D
 Acq: 02 May 2023 12:39

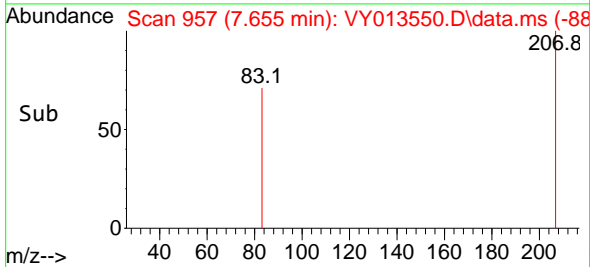
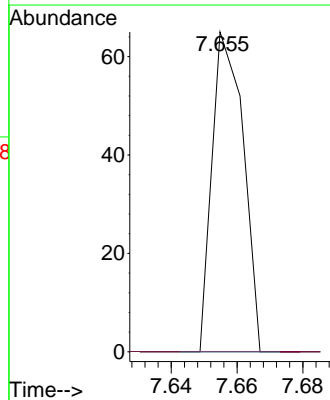
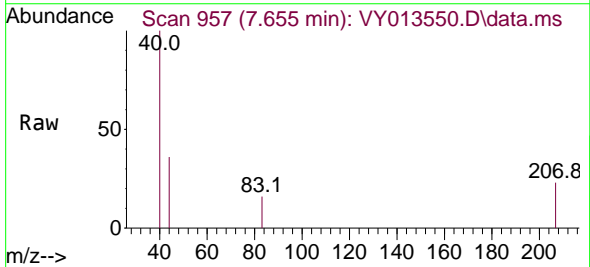
Instrument :
 MSVOA_Y
 ClientSampleId :
 JC-03-042823-A

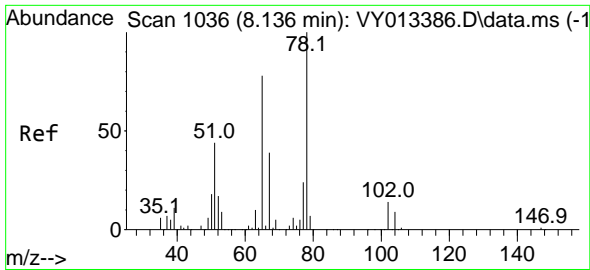
Tgt Ion: 42 Resp: 23
 Ion Ratio Lower Upper
 42 100
 72 0.0 35.9 53.9#
 71 0.0 34.3 51.5#



#30
 Chloroform
 Concen: 1.093 ug/l
 RT: 7.655 min Scan# 957
 Delta R.T. 0.153 min
 Lab File: VY013550.D
 Acq: 02 May 2023 12:39

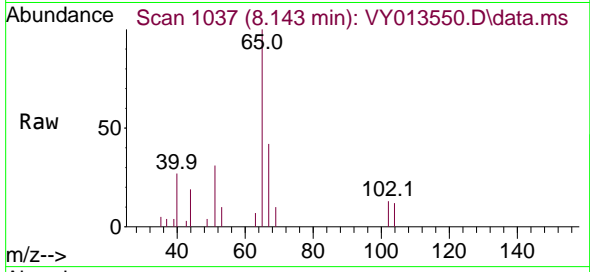
Tgt Ion: 83 Resp: 43
 Ion Ratio Lower Upper
 83 100
 85 0.0 52.0 78.0#



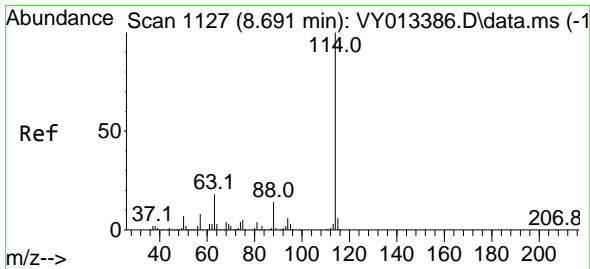
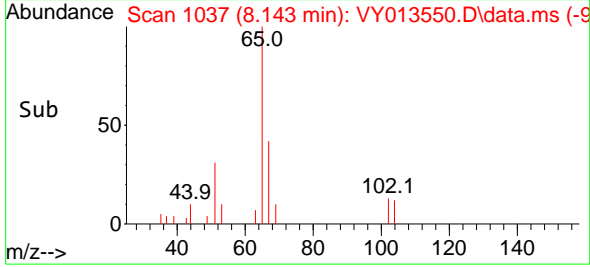
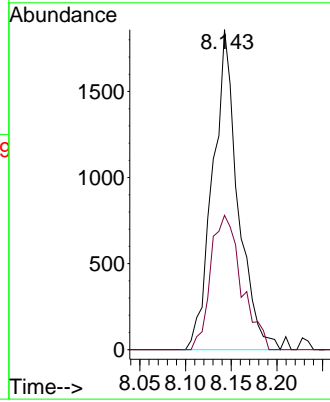


#33
 1,2-Dichloroethane-d4
 Concen: 173.095 ug/l
 RT: 8.143 min Scan# 1037
 Delta R.T. 0.007 min
 Lab File: VY013550.D
 Acq: 02 May 2023 12:39

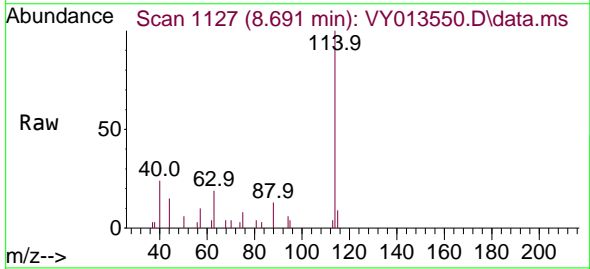
Instrument : MSVOA_Y
 ClientSampleId : JC-03-042823-A



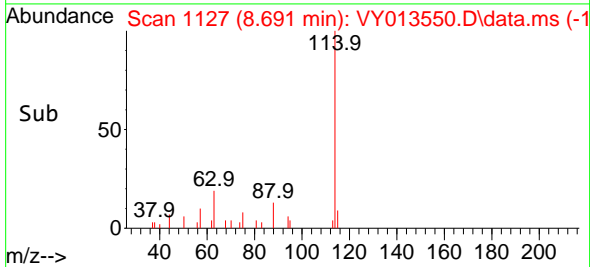
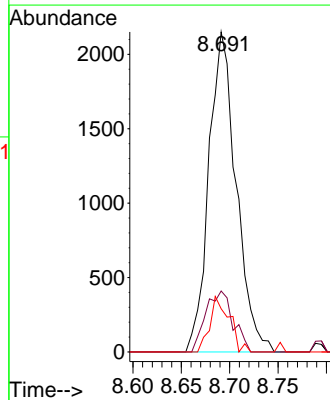
Tgt Ion: 65 Resp: 3573
 Ion Ratio Lower Upper
 65 100
 67 51.2 0.0 103.4

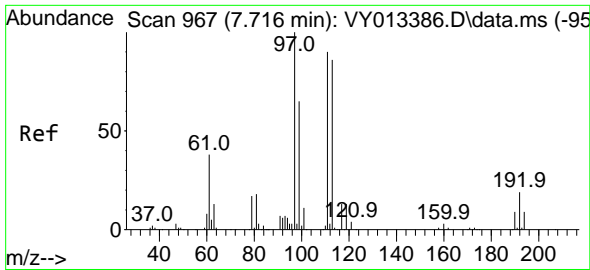


#34
 1,4-Difluorobenzene
 Concen: 50.000 ug/l
 RT: 8.691 min Scan# 1127
 Delta R.T. 0.000 min
 Lab File: VY013550.D
 Acq: 02 May 2023 12:39



Tgt Ion: 114 Resp: 4230
 Ion Ratio Lower Upper
 114 100
 63 19.0 0.0 36.6
 88 13.5 0.0 28.8

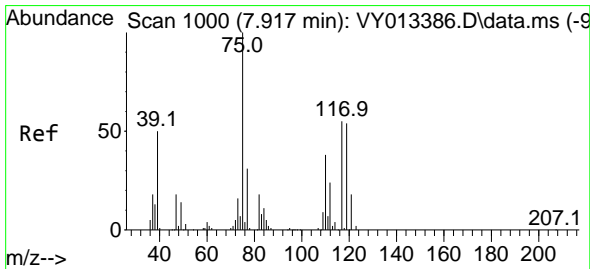
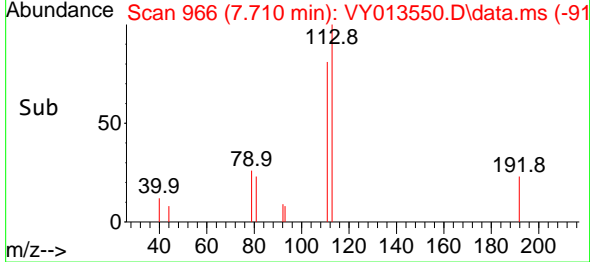
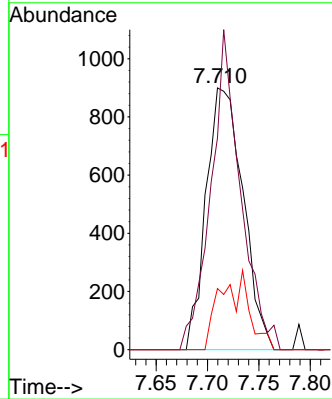
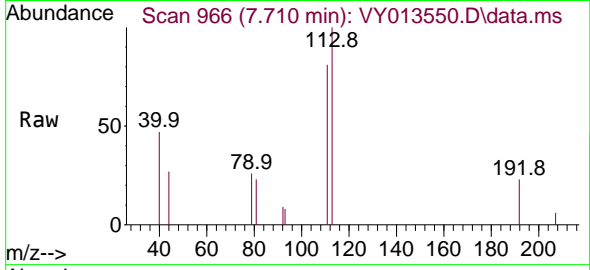




#35
 Dibromofluoromethane
 Concen: 84.534 ug/l
 RT: 7.710 min Scan# 90
 Delta R.T. -0.006 min
 Lab File: VY013550.D
 Acq: 02 May 2023 12:39

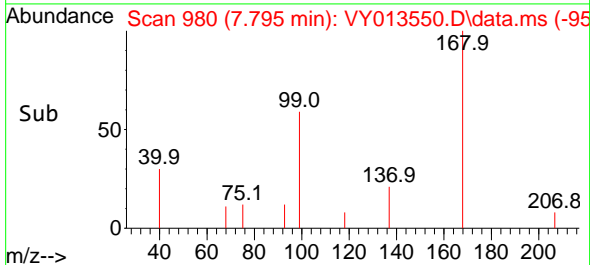
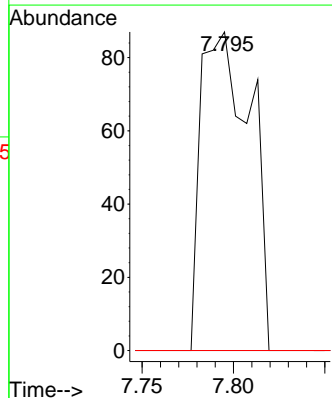
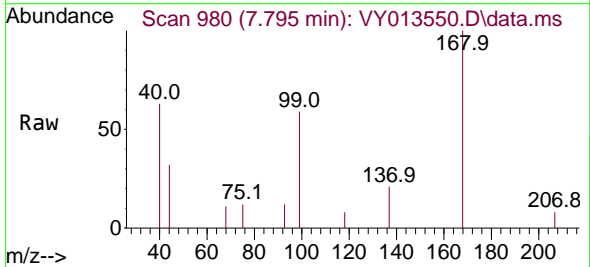
Instrument :
 MSVOA_Y
 ClientSampleId :
 JC-03-042823-A

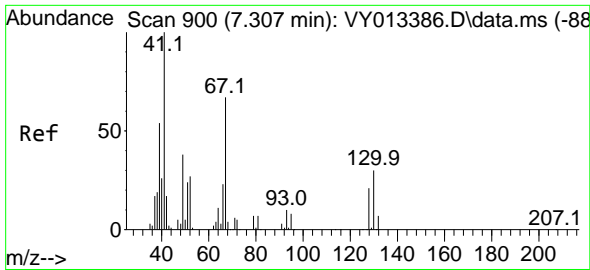
Tgt Ion:113 Resp: 2249
 Ion Ratio Lower Upper
 113 100
 111 97.8 82.2 123.2
 192 0.0 16.7 25.1#



#36
 1,1-Dichloropropene
 Concen: 3.737 ug/l
 RT: 7.795 min Scan# 980
 Delta R.T. -0.122 min
 Lab File: VY013550.D
 Acq: 02 May 2023 12:39

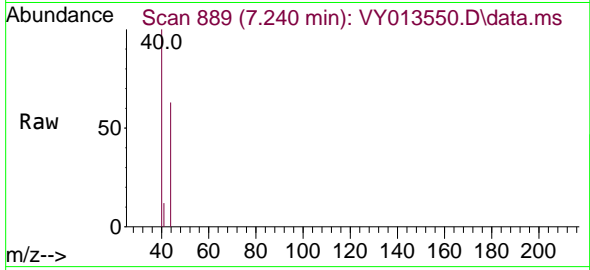
Tgt Ion: 75 Resp: 165
 Ion Ratio Lower Upper
 75 100
 110 0.0 18.7 56.1#
 77 0.0 24.6 37.0#





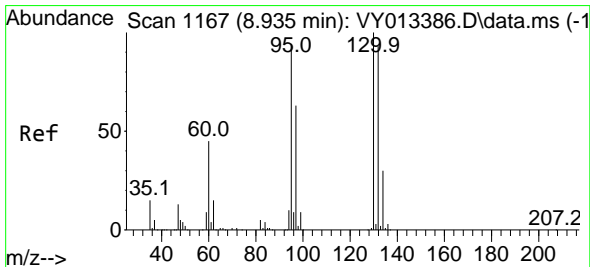
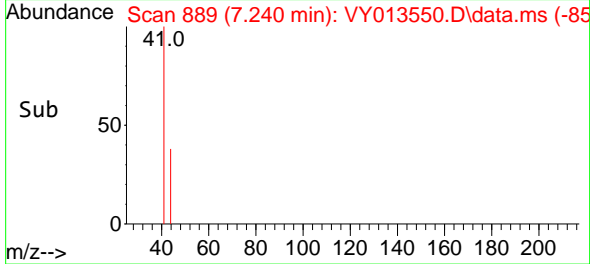
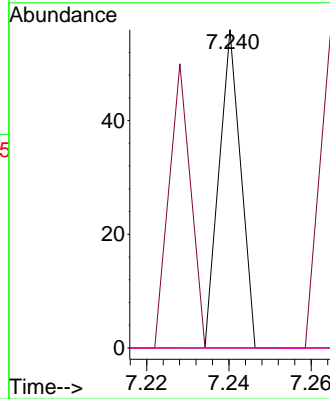
#41
 Methacrylonitrile
 Concen: 1.292 ug/l
 RT: 7.240 min Scan# 889
 Delta R.T. -0.067 min
 Lab File: VY013550.D
 Acq: 02 May 2023 12:39

Instrument : MSVOA_Y
 ClientSampleId : JC-03-042823-A



Tgt Ion: 41 Resp: 20

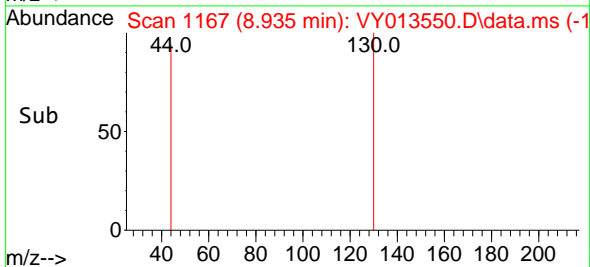
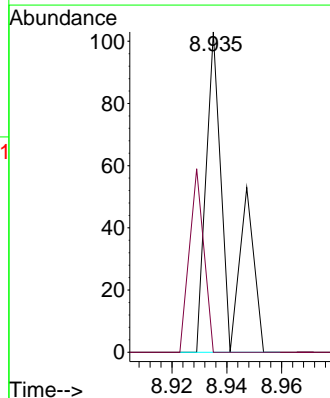
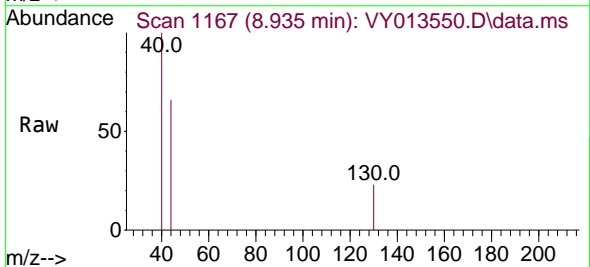
Ion	Ratio	Lower	Upper
41	100		
39	90.0	44.2	66.4#
67	0.0	62.9	94.3#
52	0.0	26.4	39.6#

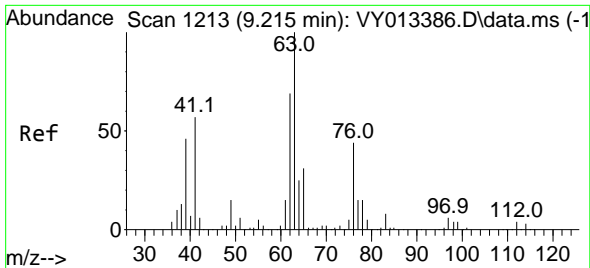


#44
 Trichloroethene
 Concen: 1.723 ug/l
 RT: 8.935 min Scan# 1167
 Delta R.T. 0.000 min
 Lab File: VY013550.D
 Acq: 02 May 2023 12:39

Tgt Ion: 130 Resp: 57

Ion	Ratio	Lower	Upper
130	100		
95	0.0	0.0	188.8

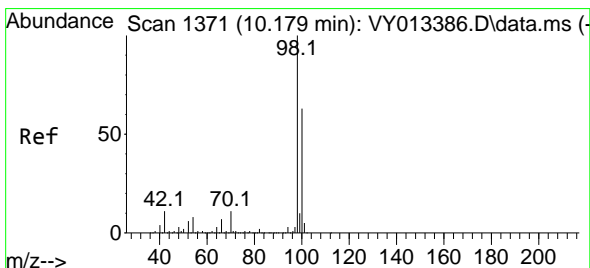
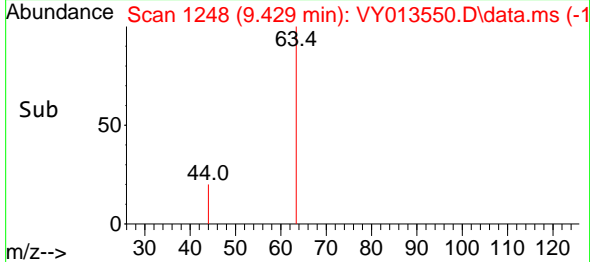
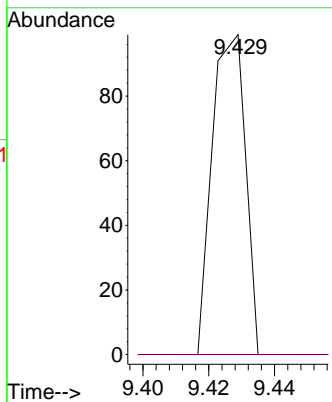
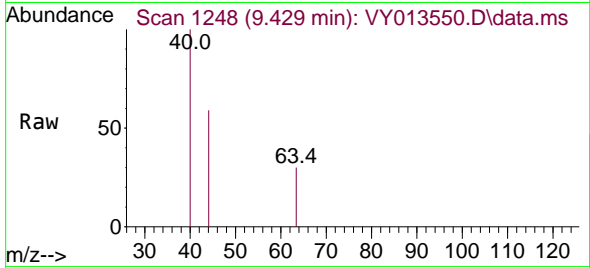




#45
 1,2-Dichloropropane
 Concen: 2.152 ug/l
 RT: 9.429 min Scan# 11
 Delta R.T. 0.214 min
 Lab File: VY013550.D
 Acq: 02 May 2023 12:39

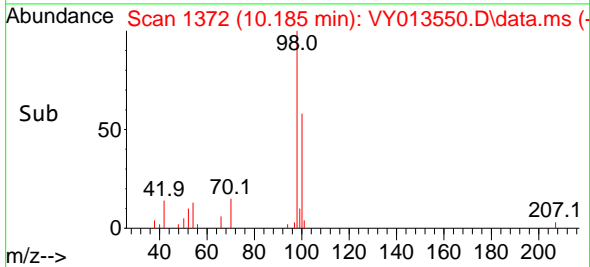
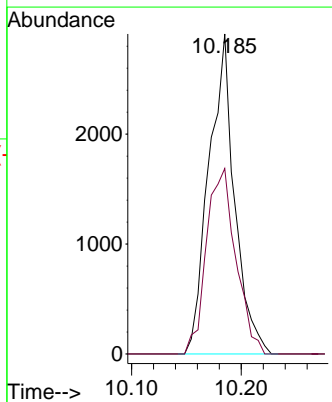
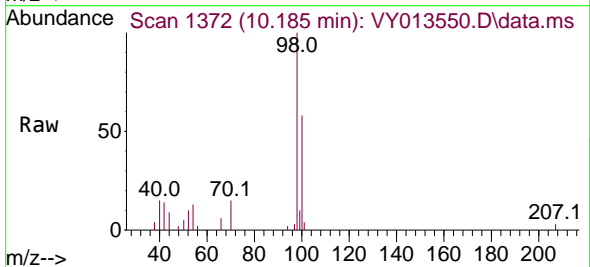
Instrument :
 MSVOA_Y
 ClientSampleId :
 JC-03-042823-A

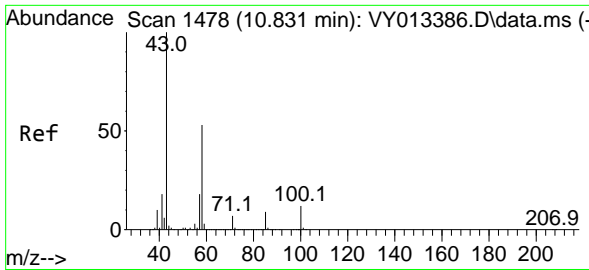
Tgt Ion: 63 Resp: 70
 Ion Ratio Lower Upper
 63 100
 65 0.0 24.6 37.0#



#50
 Toluene-d8
 Concen: 50.304 ug/l
 RT: 10.185 min Scan# 1372
 Delta R.T. 0.006 min
 Lab File: VY013550.D
 Acq: 02 May 2023 12:39

Tgt Ion: 98 Resp: 4761
 Ion Ratio Lower Upper
 98 100
 100 66.0 50.5 75.7

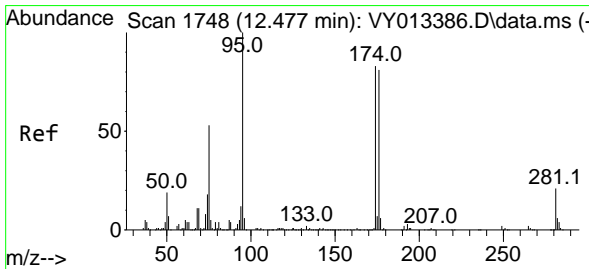
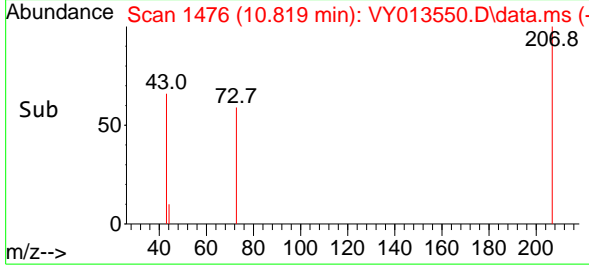
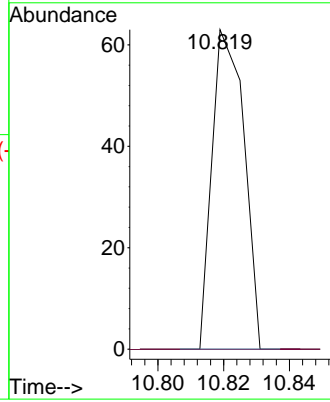
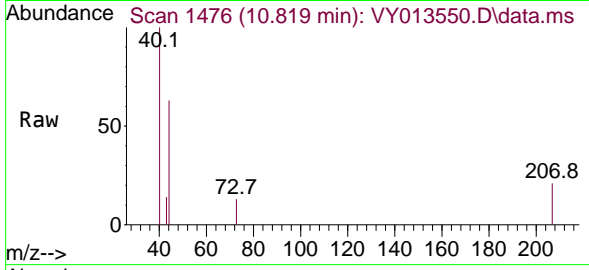




#59
 2-Hexanone
 Concen: 1.849 ug/l
 RT: 10.819 min Scan# 1476
 Delta R.T. -0.012 min
 Lab File: VY013550.D
 Acq: 02 May 2023 12:39

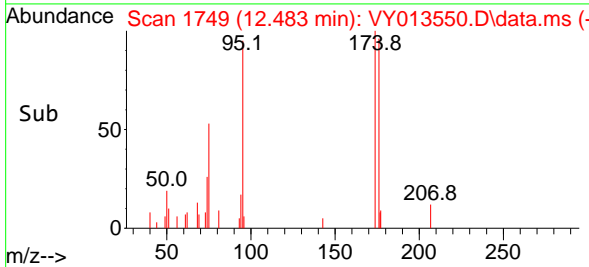
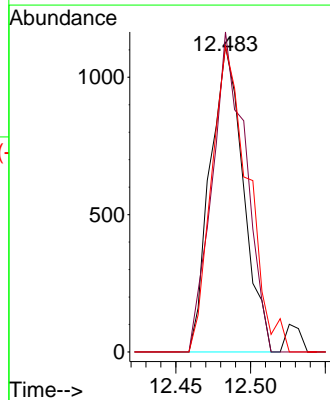
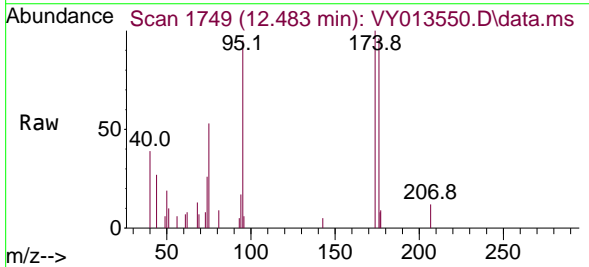
Instrument : MSVOA_Y
 ClientSampleId : JC-03-042823-A

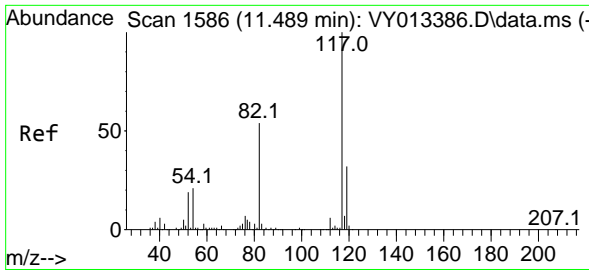
Tgt Ion: 43 Resp: 42
 Ion Ratio Lower Upper
 43 100
 58 0.0 26.3 78.8#



#62
 4-Bromofluorobenzene
 Concen: 53.876 ug/l
 RT: 12.483 min Scan# 1749
 Delta R.T. 0.006 min
 Lab File: VY013550.D
 Acq: 02 May 2023 12:39

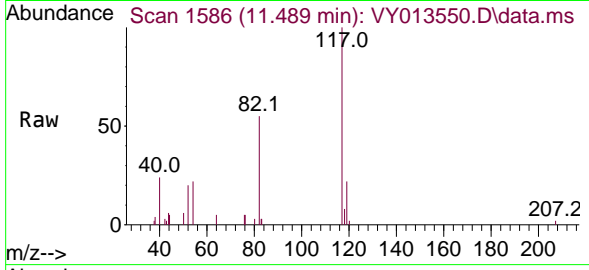
Tgt Ion: 95 Resp: 1719
 Ion Ratio Lower Upper
 95 100
 174 105.4 0.0 182.0
 176 109.9 0.0 175.4





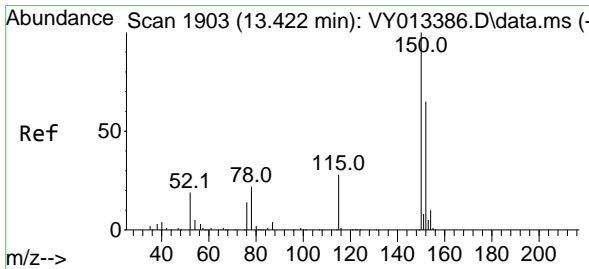
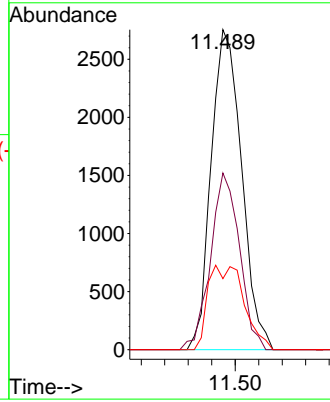
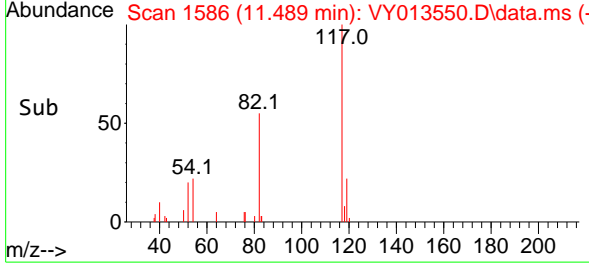
#63
 Chlorobenzene-d5
 Concen: 50.000 ug/l
 RT: 11.489 min Scan# 11
 Delta R.T. 0.000 min
 Lab File: VY013550.D
 Acq: 02 May 2023 12:39

Instrument : MSVOA_Y
 ClientSampleId : JC-03-042823-A

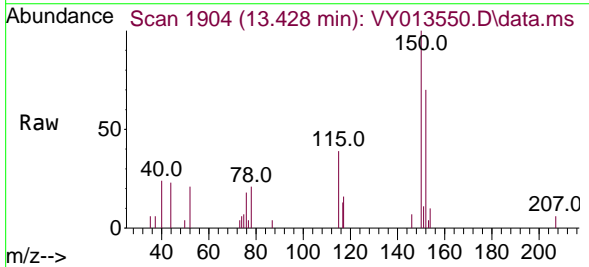


Tgt Ion:117 Resp: 4957

Ion	Ratio	Lower	Upper
117	100		
82	55.2	43.0	64.6
119	22.2	25.5	38.3

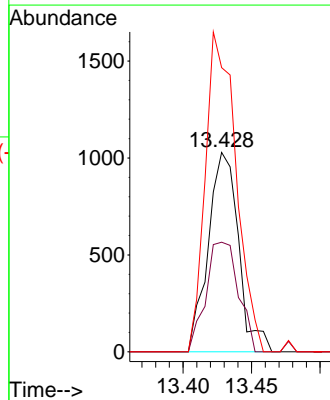
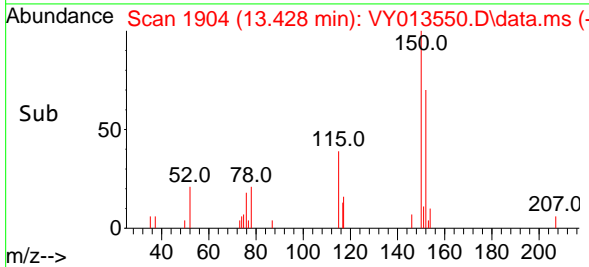


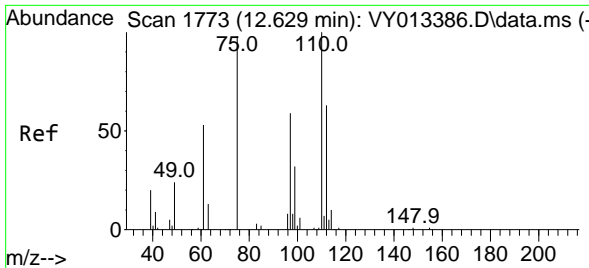
#72
 1,4-Dichlorobenzene-d4
 Concen: 50.000 ug/l
 RT: 13.428 min Scan# 1904
 Delta R.T. 0.006 min
 Lab File: VY013550.D
 Acq: 02 May 2023 12:39



Tgt Ion:152 Resp: 1583

Ion	Ratio	Lower	Upper
152	100		
115	59.1	28.1	84.2
150	161.9	0.0	352.0

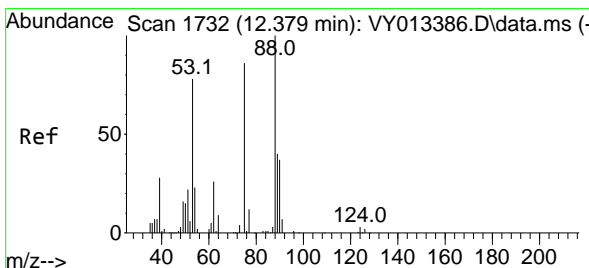
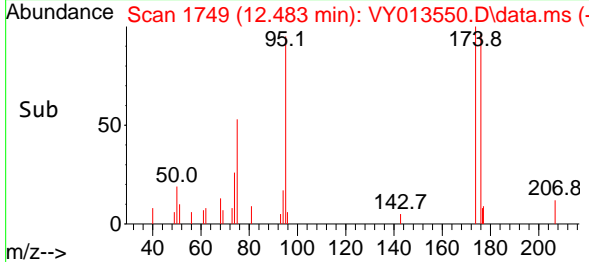
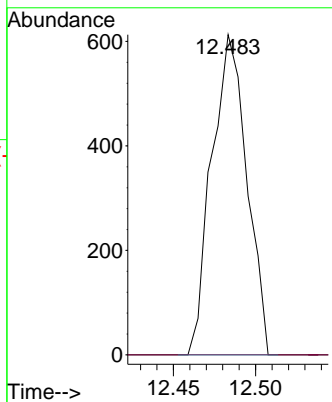
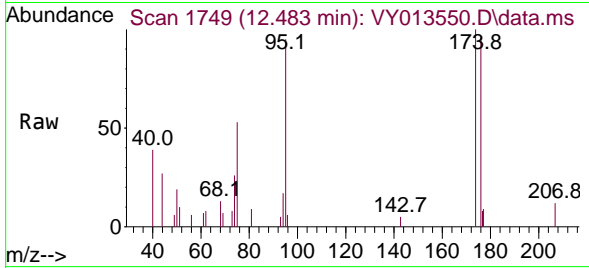




#76
 1,2,3-Trichloropropane
 Concen: 42.766 ug/l
 RT: 12.483 min Scan# 1749
 Delta R.T. -0.146 min
 Lab File: VY013550.D
 Acq: 02 May 2023 12:39

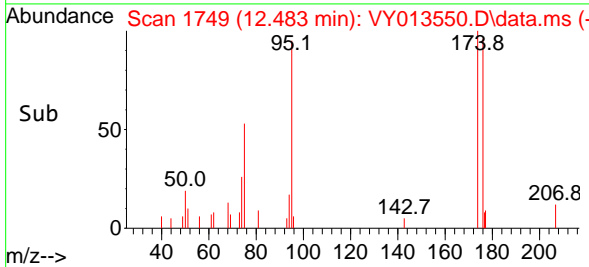
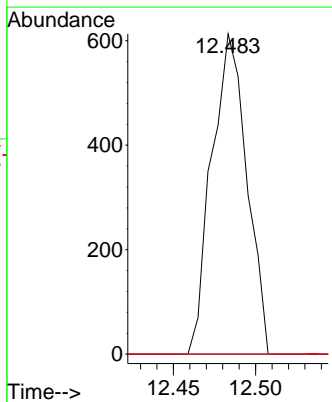
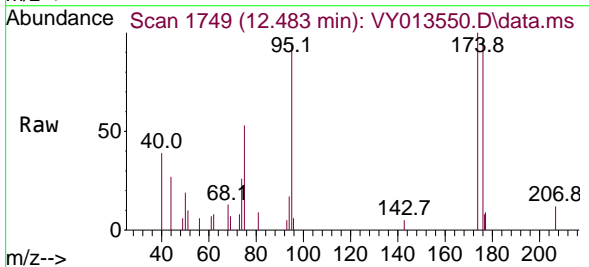
Instrument : MSVOA_Y
 ClientSampleId : JC-03-042823-A

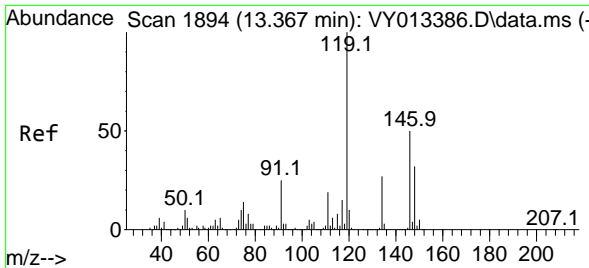
Tgt Ion: 75 Resp: 913
 Ion Ratio Lower Upper
 75 100
 77 0.0 0.0 0.0



#81
 trans-1,4-Dichloro-2-butene
 Concen: 87.480 ug/l
 RT: 12.483 min Scan# 1749
 Delta R.T. 0.104 min
 Lab File: VY013550.D
 Acq: 02 May 2023 12:39

Tgt Ion: 75 Resp: 913
 Ion Ratio Lower Upper
 75 100
 53 0.0 73.2 109.8#
 89 0.0 38.0 57.0#

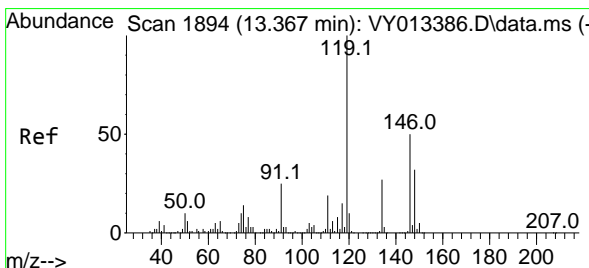
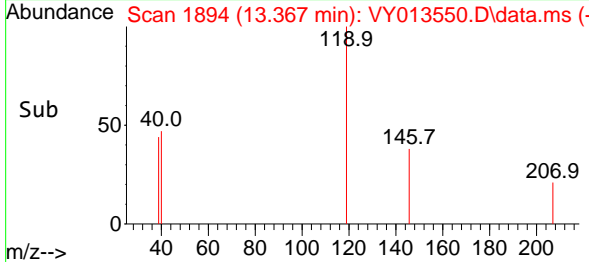
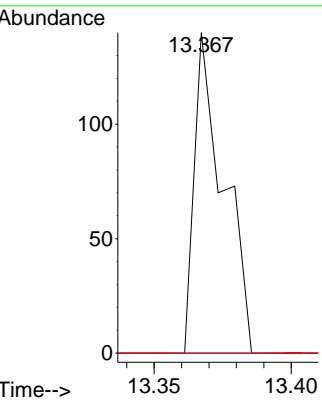
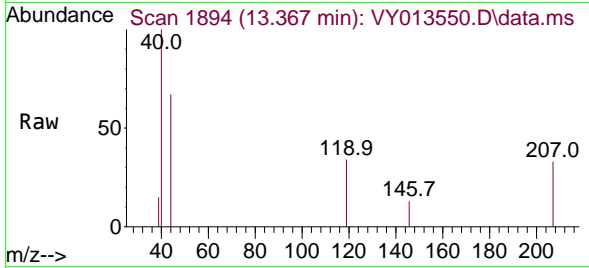




#86
 p-Isopropyltoluene
 Concen: 1.008 ug/l
 RT: 13.367 min Scan# 1894
 Delta R.T. 0.000 min
 Lab File: VY013550.D
 Acq: 02 May 2023 12:39

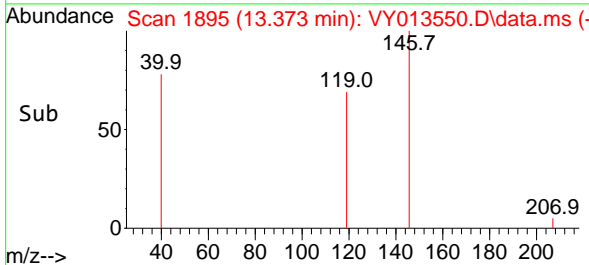
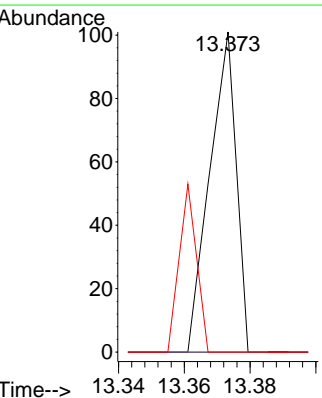
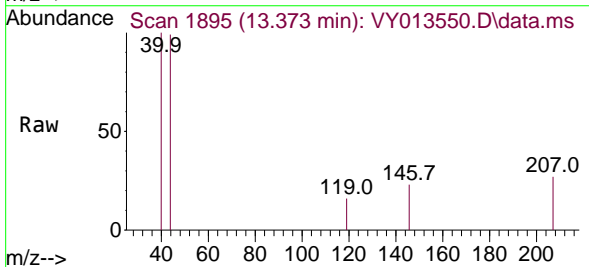
Instrument : MSVOA_Y
 ClientSampleId : JC-03-042823-A

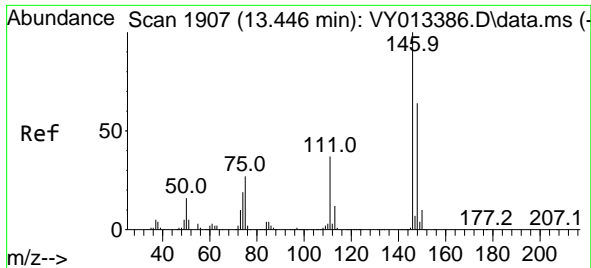
Tgt Ion	Resp	Lower	Upper
119	100		
134	0.0	13.4	40.2#
91	0.0	12.1	36.3#



#87
 1,3-Dichlorobenzene
 Concen: 1.013 ug/l
 RT: 13.373 min Scan# 1895
 Delta R.T. 0.006 min
 Lab File: VY013550.D
 Acq: 02 May 2023 12:39

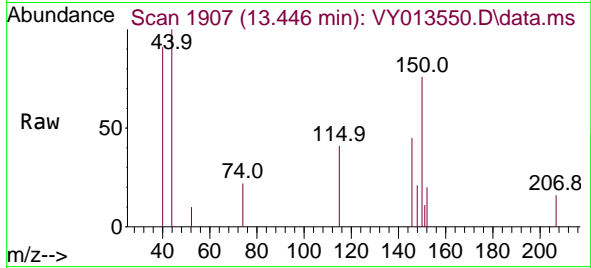
Tgt Ion	Resp	Lower	Upper
146	100		
111	0.0	19.3	57.9#
148	33.9	31.9	95.7



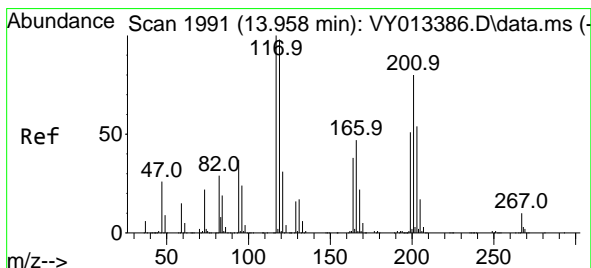
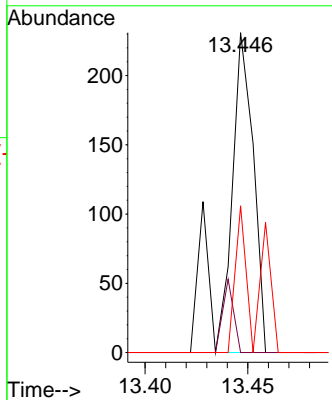
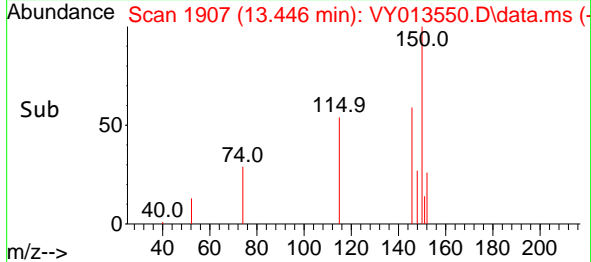


#88
 1,4-Dichlorobenzene
 Concen: 3.618 ug/l
 RT: 13.446 min Scan# 1907
 Delta R.T. 0.000 min
 Lab File: VY013550.D
 Acq: 02 May 2023 12:39

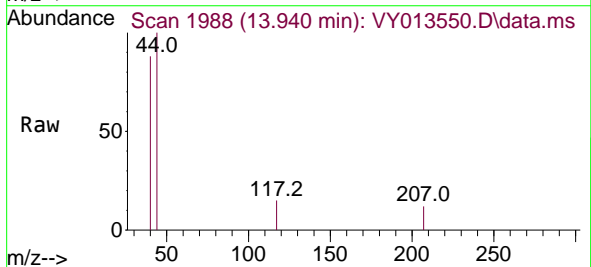
Instrument : MSVOA_Y
 ClientSampleId : JC-03-042823-A



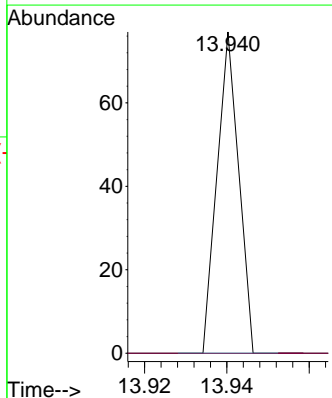
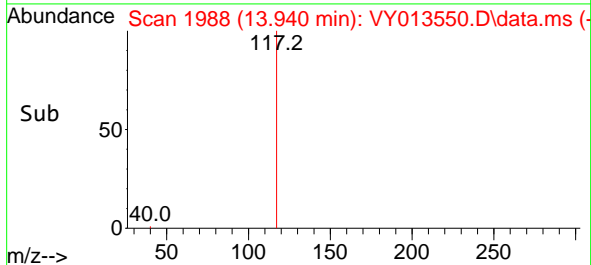
Tgt Ion:146 Resp: 202
 Ion Ratio Lower Upper
 146 100
 111 9.4 18.9 56.5#
 148 36.1 31.9 95.5

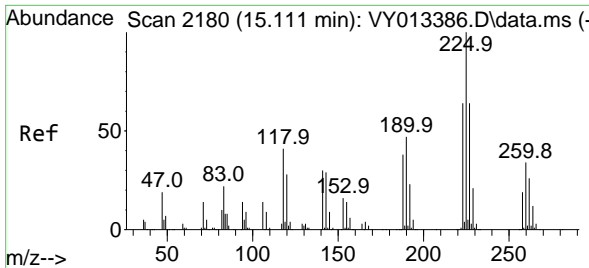


#90
 Hexachloroethane
 Concen: 1.302 ug/l
 RT: 13.940 min Scan# 1988
 Delta R.T. -0.018 min
 Lab File: VY013550.D
 Acq: 02 May 2023 12:39



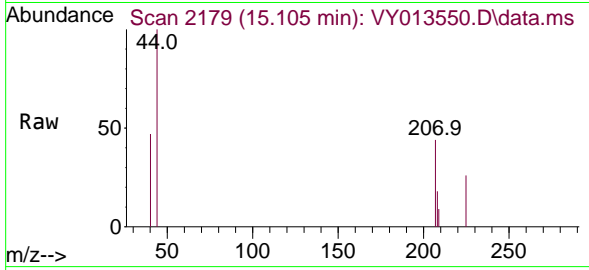
Tgt Ion:117 Resp: 28
 Ion Ratio Lower Upper
 117 100
 201 0.0 41.6 124.8#



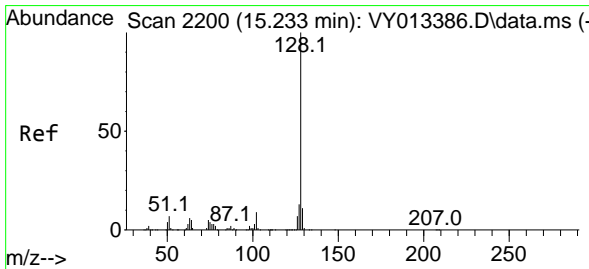
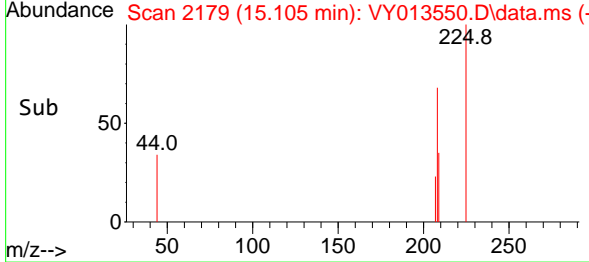
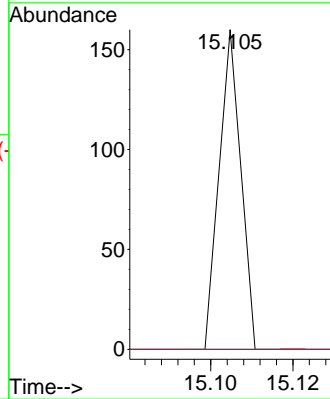


#94
 Hexachlorobutadiene
 Concen: 3.407 ug/l
 RT: 15.105 min Scan# 2179
 Delta R.T. -0.006 min
 Lab File: VY013550.D
 Acq: 02 May 2023 12:39

Instrument : MSVOA_Y
 ClientSampleId : JC-03-042823-A

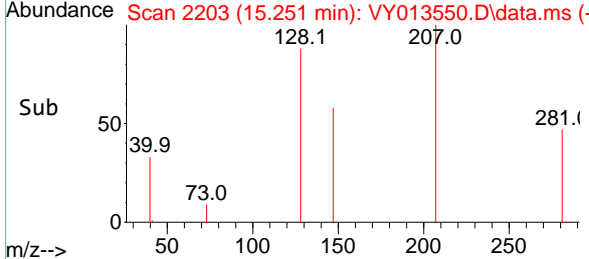
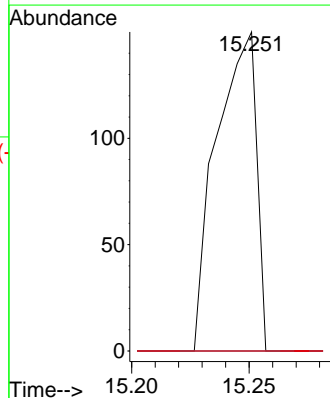
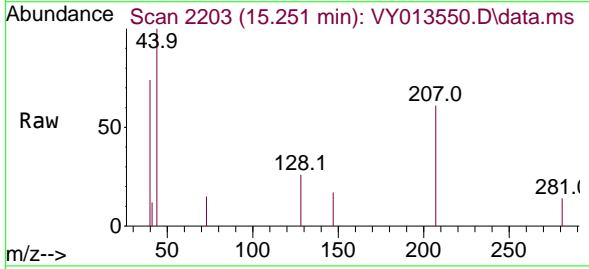


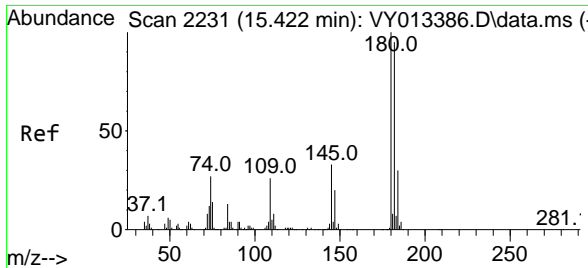
Tgt Ion:225 Resp: 59
 Ion Ratio Lower Upper
 225 100
 223 0.0 31.4 94.2#
 227 0.0 32.0 96.0#



#95
 Naphthalene
 Concen: 2.741 ug/l
 RT: 15.251 min Scan# 2203
 Delta R.T. 0.018 min
 Lab File: VY013550.D
 Acq: 02 May 2023 12:39

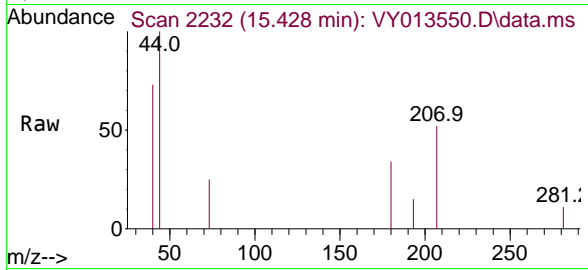
Tgt Ion:128 Resp: 177
 Ion Ratio Lower Upper
 128 100
 127 0.0 10.7 16.1#
 129 0.0 8.8 13.2#





#96
 1,2,3-Trichlorobenzene
 Concen: 4.336 ug/l
 RT: 15.428 min Scan# 21
 Delta R.T. 0.006 min
 Lab File: VY013550.D
 Acq: 02 May 2023 12:39

Instrument :
 MSVOA_Y
 ClientSampleId :
 JC-03-042823-A



Tgt Ion:180 Resp: 115

Ion	Ratio	Lower	Upper
180	100		
182	41.7	47.1	141.3#
145	0.0	15.9	47.7#

