

Data Path : Z:\voasrv\HPCHEM1\MSVOA_Y\Data\VY050823\
 Data File : VY013653.D
 Acq On : 08 May 2023 17:22
 Operator : KP/MD
 Sample : 02680-01
 Misc : 5.03g/5.0mL/MSVOA_Y/SOIL
 ALS Vial : 17 Sample Multiplier: 1

Instrument :
 MSVOA_Y
 ClientSampleId :
 SU-02-050823

Quant Time: May 09 04:59:43 2023
 Quant Method : Z:\voasrv\HPCHEM1\MSVOA_Y\methods\82Y042423S.M
 Quant Title : SW846 8260
 QLast Update : Tue Apr 25 02:39:58 2023
 Response via : Initial Calibration

Compound	R.T.	QIon	Response	Conc	Units	Dev(Min)

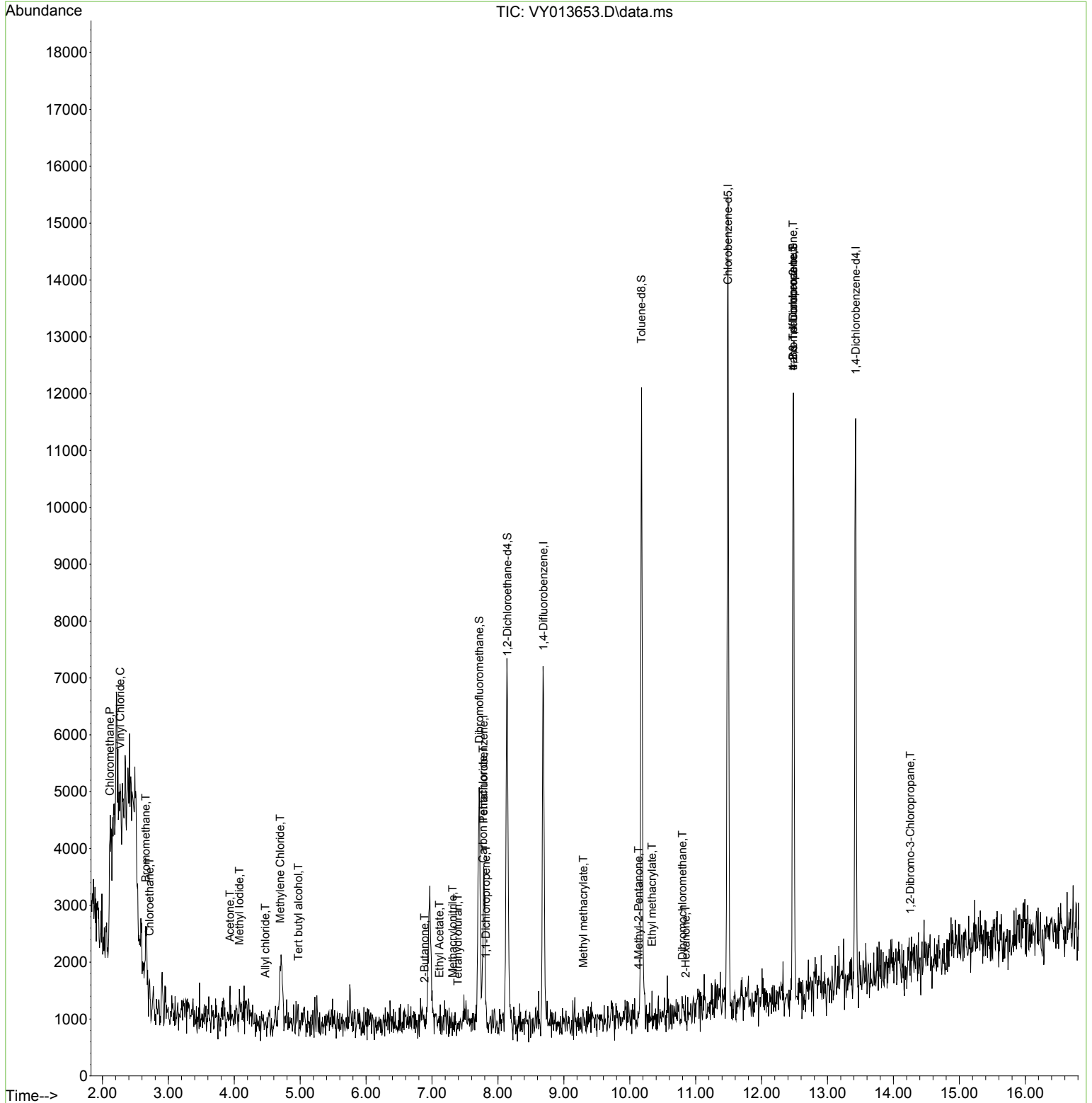
Internal Standards						
1) Pentafluorobenzene	7.783	168	2572	50.000	ug/l	0.00
34) 1,4-Difluorobenzene	8.691	114	4976	50.000	ug/l	0.00
63) Chlorobenzene-d5	11.489	117	7303	50.000	ug/l	0.00
72) 1,4-Dichlorobenzene-d4	13.428	152	2620	50.000	ug/l	0.00
System Monitoring Compounds						
33) 1,2-Dichloroethane-d4	8.142	65	4954	175.706	ug/l	0.00
Spiked Amount	50.000	Range	50 - 163	Recovery	=	351.420%#
35) Dibromofluoromethane	7.716	113	2826	90.297	ug/l	0.00
Spiked Amount	50.000	Range	54 - 147	Recovery	=	180.600%#
50) Toluene-d8	10.179	98	7153	64.247	ug/l	0.00
Spiked Amount	50.000	Range	58 - 134	Recovery	=	128.500%
62) 4-Bromofluorobenzene	12.477	95	3030	80.727	ug/l	0.00
Spiked Amount	50.000	Range	30 - 143	Recovery	=	161.460%#
Target Compounds						
						Qvalue
3) Chloromethane	2.113	50	859	26.208	ug/l #	85
4) Vinyl Chloride	2.272	62	41	1.256	ug/l #	43
5) Bromomethane	2.656	94	457	17.573	ug/l #	56
6) Chloroethane	2.717	64	27	1.198	ug/l #	44
10) Methyl Iodide	4.076	142	606	17.399	ug/l #	49
11) Tert butyl alcohol	4.972	59	21	7.245	ug/l #	89
13) Acrolein	3.814	56	20	Below Cal	#	16
14) Allyl chloride	4.472	41	57	1.149	ug/l #	64
16) Acetone	3.936	43	145	13.059	ug/l #	43
20) Methylene Chloride	4.698	84	420	4.754	ug/l #	63
25) 2-Butanone	6.887	43	136	9.658	ug/l #	47
29) Tetrahydrofuran	7.393	42	22	2.510	ug/l #	32
36) 1,1-Dichloropropene	7.819	75	54	1.040	ug/l #	40
37) Ethyl Acetate	7.112	43	40	1.023	ug/l #	69
38) Carbon Tetrachloride	7.777	117	59	1.084	ug/l #	11
41) Methacrylonitrile	7.313	41	19	1.043	ug/l #	16
48) Methyl methacrylate	9.295	41	84	2.772	ug/l #	11
51) 4-Methyl-2-Pentanone	10.136	43	39	1.061	ug/l #	37
56) Ethyl methacrylate	10.337	69	97	2.307	ug/l #	33
59) 2-Hexanone	10.849	43	50	1.871	ug/l #	26
60) Dibromochloromethane	10.801	129	56	1.521	ug/l #	11
76) 1,2,3-Trichloropropane	12.477	75	1612	45.622	ug/l #	100
81) trans-1,4-Dichloro-2-b...	12.477	75	1612	93.322	ug/l #	12
92) 1,2-Dibromo-3-Chloropr...	14.257	75	29	3.390	ug/l #	1

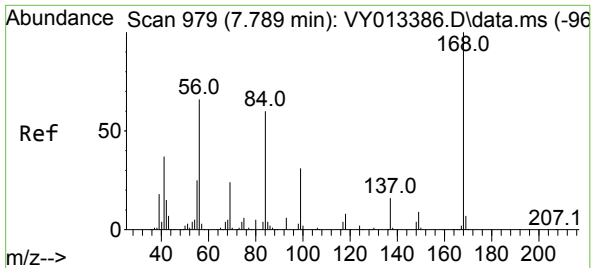
(#) = qualifier out of range (m) = manual integration (+) = signals summed

Data Path : Z:\voasrv\HPCHEM1\MSVOA_Y\Data\VY050823\
 Data File : VY013653.D
 Acq On : 08 May 2023 17:22
 Operator : KP/MD
 Sample : 02680-01
 Misc : 5.03g/5.0mL/MSVOA_Y/SOIL
 ALS Vial : 17 Sample Multiplier: 1

Instrument :
 MSVOA_Y
 ClientSampleId :
 SU-02-050823

Quant Time: May 09 04:59:43 2023
 Quant Method : Z:\voasrv\HPCHEM1\MSVOA_Y\methods\82Y042423S.M
 Quant Title : SW846 8260
 QLast Update : Tue Apr 25 02:39:58 2023
 Response via : Initial Calibration

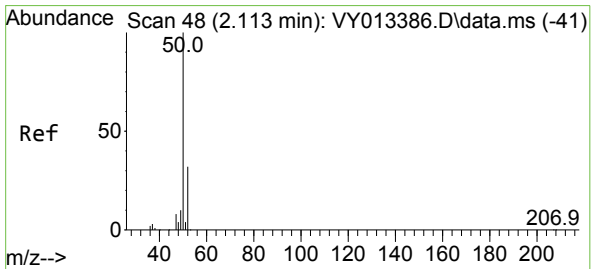
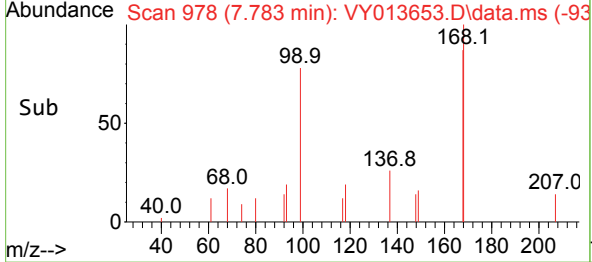
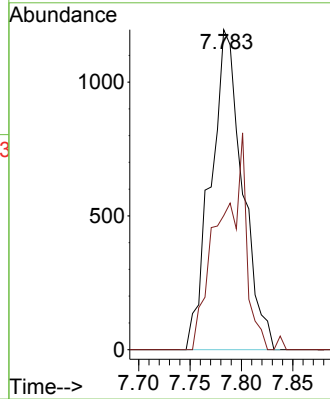
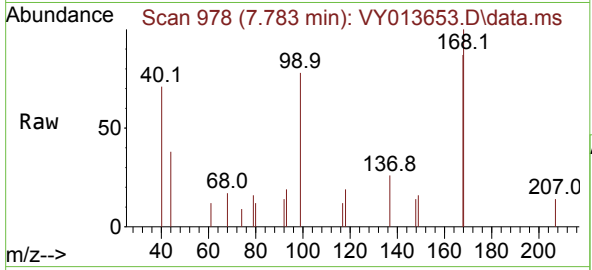




#1
 Pentafluorobenzene
 Concen: 50.000 ug/l
 RT: 7.783 min Scan# 91
 Delta R.T. -0.006 min
 Lab File: VY013653.D
 Acq: 08 May 2023 17:22

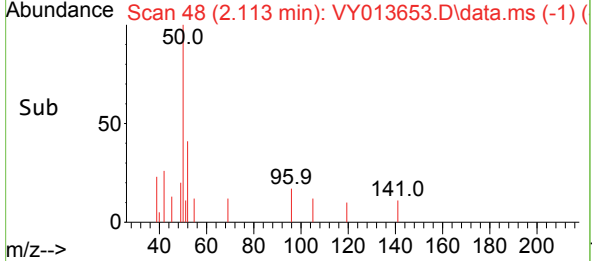
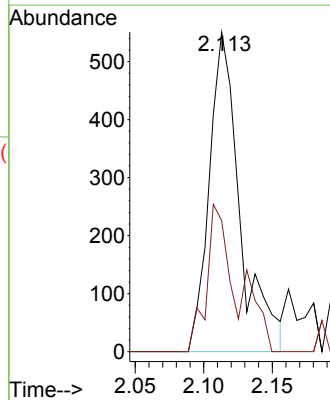
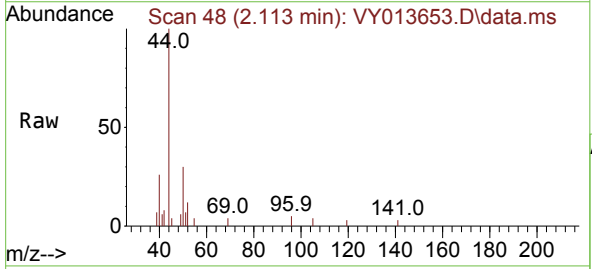
Instrument :
 MSVOA_Y
 ClientSampleId :
 SU-02-050823

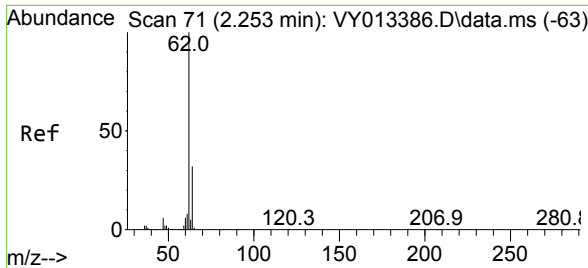
Tgt Ion:168 Resp: 2572
 Ion Ratio Lower Upper
 168 100
 99 41.9 41.8 62.6



#3
 Chloromethane
 Concen: 26.208 ug/l
 RT: 2.113 min Scan# 48
 Delta R.T. 0.000 min
 Lab File: VY013653.D
 Acq: 08 May 2023 17:22

Tgt Ion: 50 Resp: 859
 Ion Ratio Lower Upper
 50 100
 52 41.0 25.9 38.9#

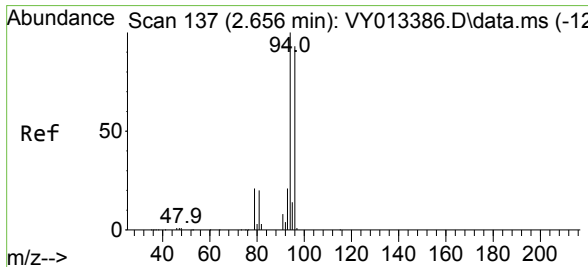
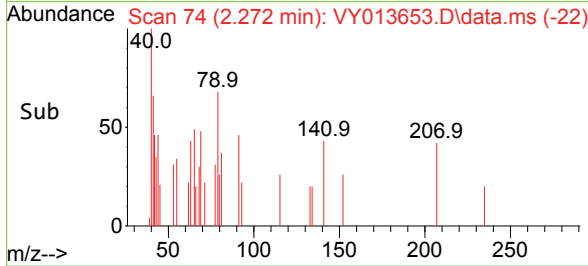
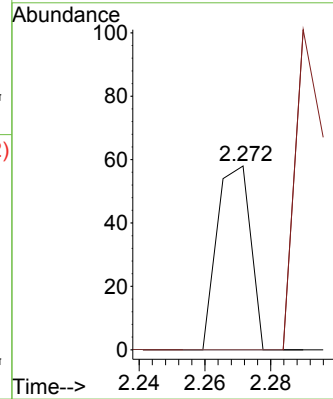
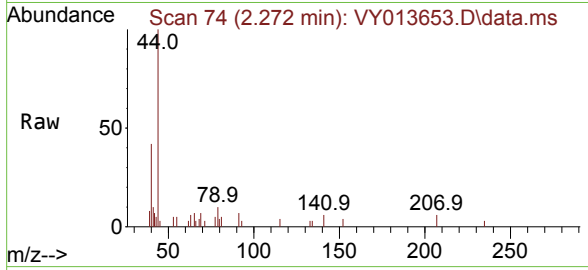




#4
 Vinyl Chloride
 Concen: 1.256 ug/l
 RT: 2.272 min Scan# 74
 Delta R.T. 0.019 min
 Lab File: VY013653.D
 Acq: 08 May 2023 17:22

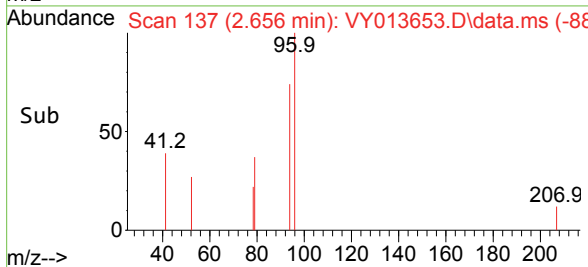
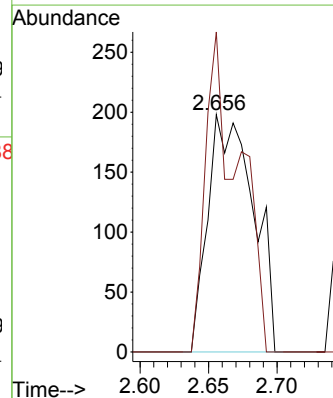
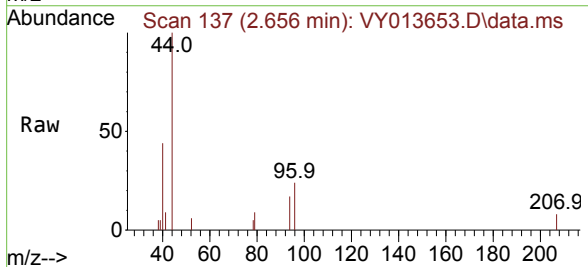
Instrument :
 MSVOA_Y
 ClientSampleId :
 SU-02-050823

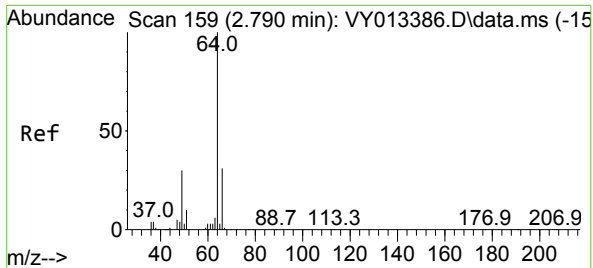
Tgt Ion: 62 Resp: 41
 Ion Ratio Lower Upper
 62 100
 64 0.0 25.4 38.0#



#5
 Bromomethane
 Concen: 17.573 ug/l
 RT: 2.656 min Scan# 137
 Delta R.T. -0.000 min
 Lab File: VY013653.D
 Acq: 08 May 2023 17:22

Tgt Ion: 94 Resp: 457
 Ion Ratio Lower Upper
 94 100
 96 134.8 74.2 111.2#

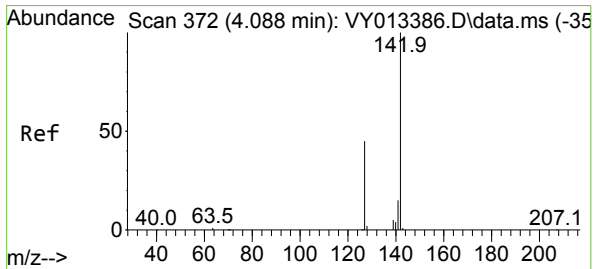
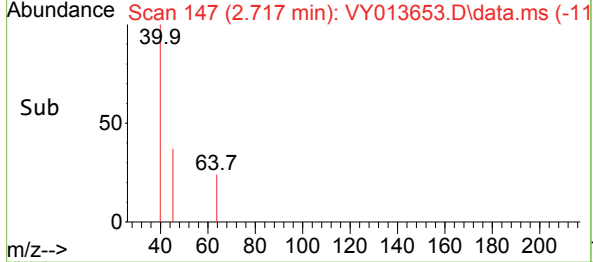
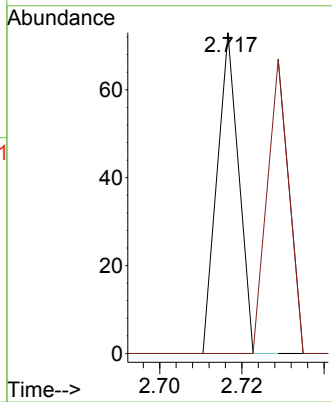
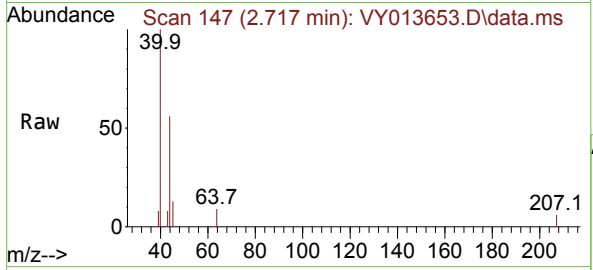




#6
 Chloroethane
 Concen: 1.198 ug/l
 RT: 2.717 min Scan# 14
 Delta R.T. -0.073 min
 Lab File: VY013653.D
 Acq: 08 May 2023 17:22

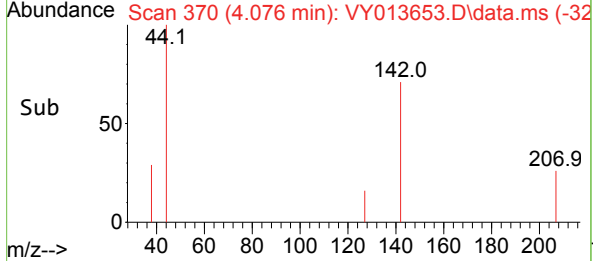
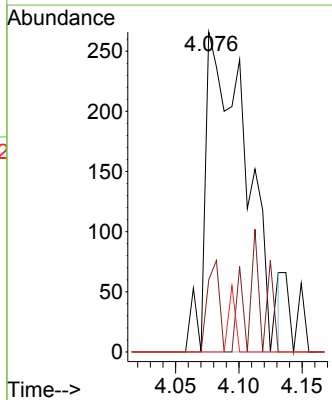
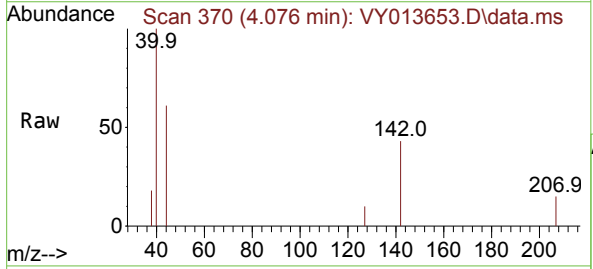
Instrument : MSVOA_Y
 ClientSampleId : SU-02-050823

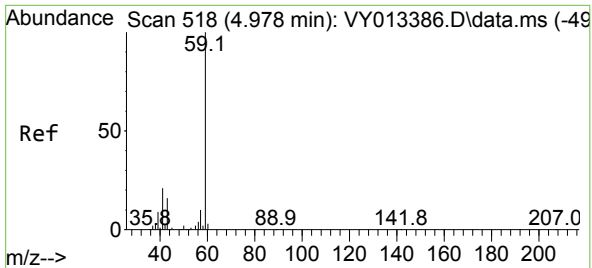
Tgt Ion:	Resp:	Lower	Upper
64	100		
66	0.0	24.6	37.0#



#10
 Methyl Iodide
 Concen: 17.399 ug/l
 RT: 4.076 min Scan# 370
 Delta R.T. -0.012 min
 Lab File: VY013653.D
 Acq: 08 May 2023 17:22

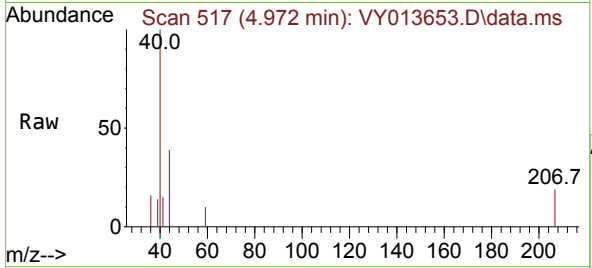
Tgt Ion:	Resp:	Lower	Upper
142	100		
127	8.3	36.1	54.1#
141	0.0	11.6	17.4#



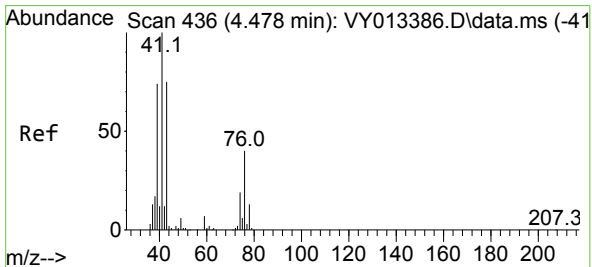
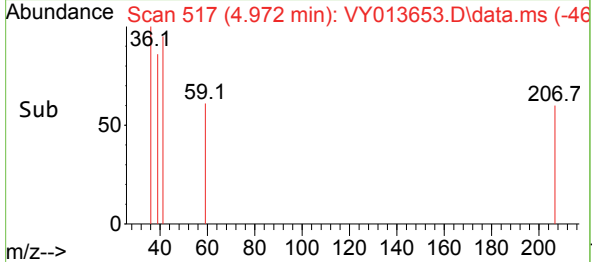
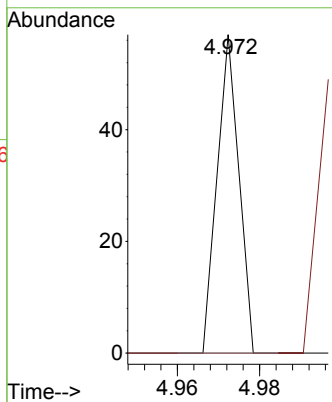


#11
 Tert butyl alcohol
 Concen: 7.245 ug/l
 RT: 4.972 min Scan# 51
 Delta R.T. -0.006 min
 Lab File: VY013653.D
 Acq: 08 May 2023 17:22

Instrument : MSVOA_Y
 ClientSampleId : SU-02-050823

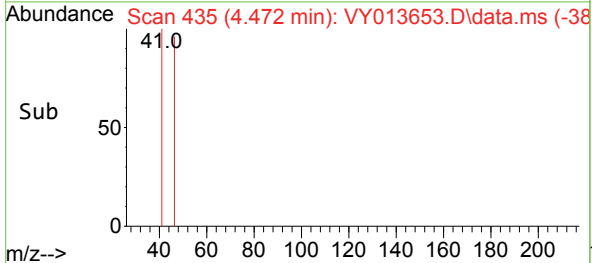
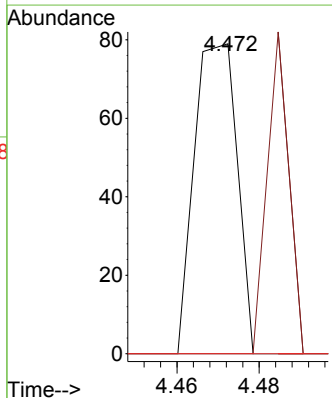
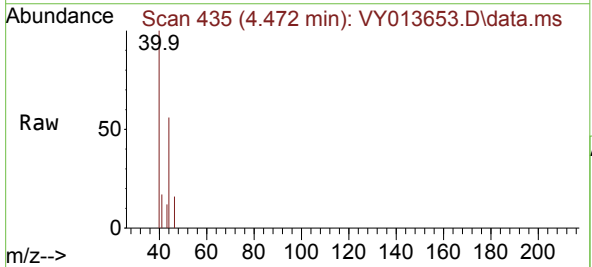


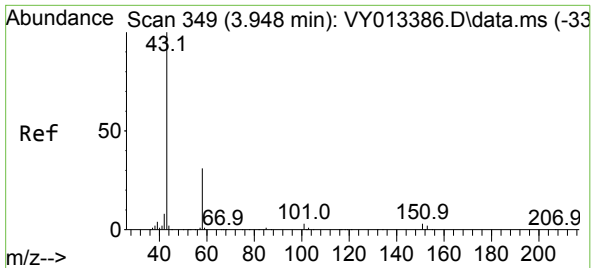
Tgt Ion: 59 Resp: 21
 Ion Ratio Lower Upper
 59 100
 57 0.0 3.0 4.4#



#14
 Allyl chloride
 Concen: 1.149 ug/l
 RT: 4.472 min Scan# 435
 Delta R.T. -0.006 min
 Lab File: VY013653.D
 Acq: 08 May 2023 17:22

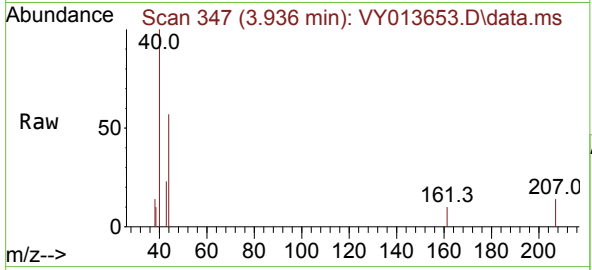
Tgt Ion: 41 Resp: 57
 Ion Ratio Lower Upper
 41 100
 39 52.6 56.6 85.0#
 76 0.0 30.5 45.7#



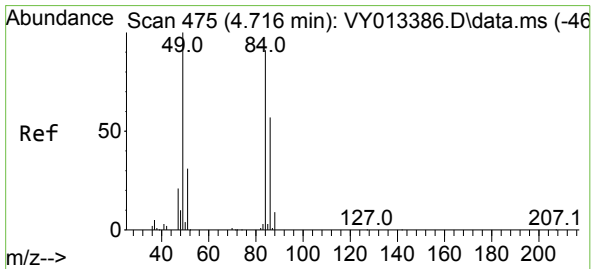
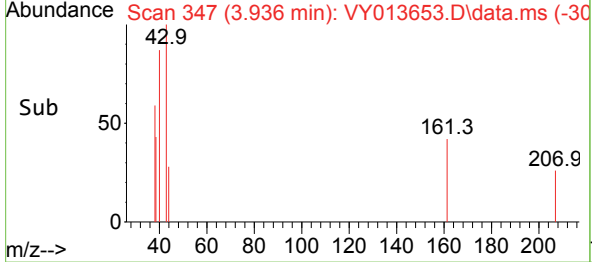
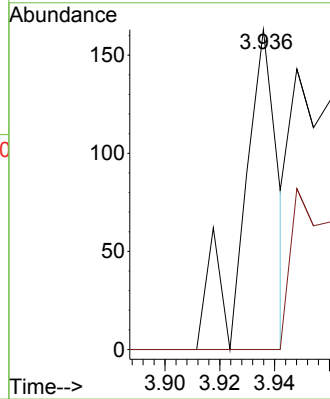


#16
 Acetone
 Concen: 13.059 ug/l
 RT: 3.936 min Scan# 34
 Delta R.T. -0.012 min
 Lab File: VY013653.D
 Acq: 08 May 2023 17:22

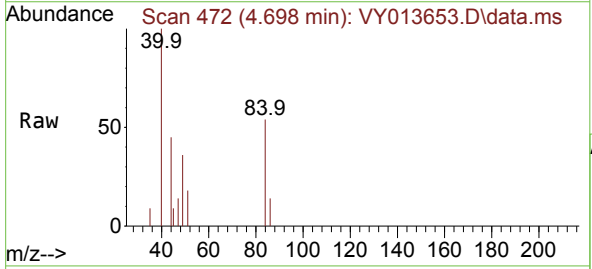
Instrument :
 MSVOA_Y
 ClientSampleId :
 SU-02-050823



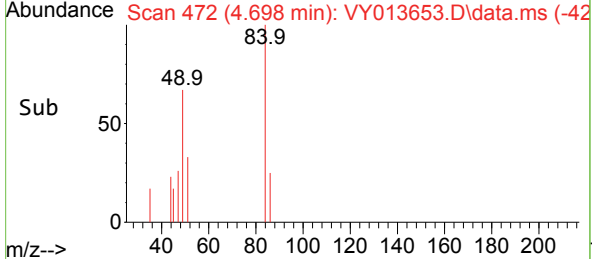
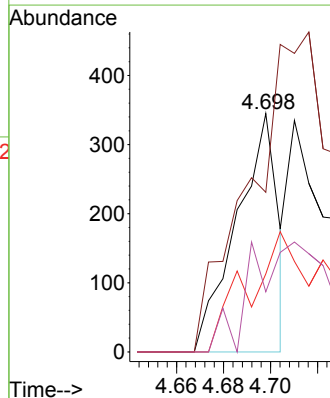
Tgt Ion: 43 Resp: 145
 Ion Ratio Lower Upper
 43 100
 58 0.0 25.4 38.0#

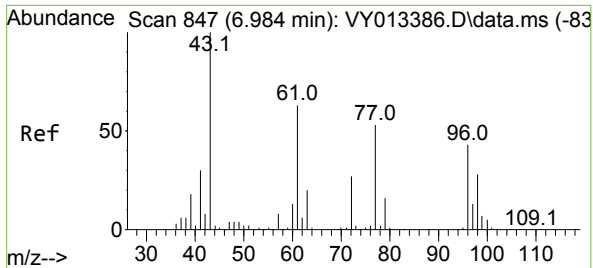


#20
 Methylene Chloride
 Concen: 4.754 ug/l
 RT: 4.698 min Scan# 472
 Delta R.T. -0.018 min
 Lab File: VY013653.D
 Acq: 08 May 2023 17:22



Tgt Ion: 84 Resp: 420
 Ion Ratio Lower Upper
 84 100
 49 67.0 88.0 132.0#
 51 32.8 27.4 41.0
 86 25.2 50.4 75.6#

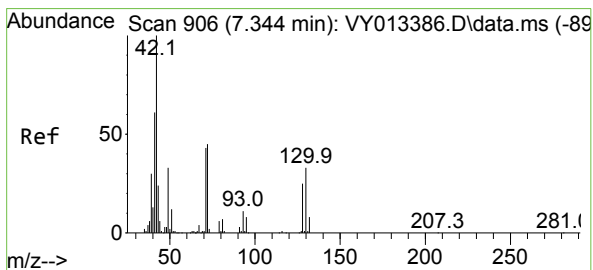
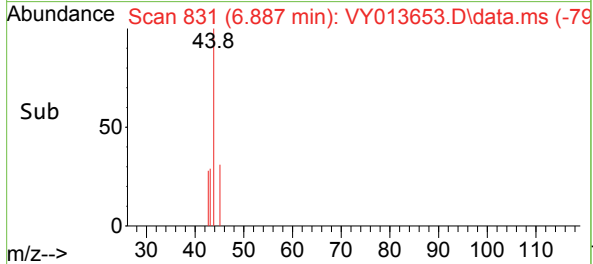
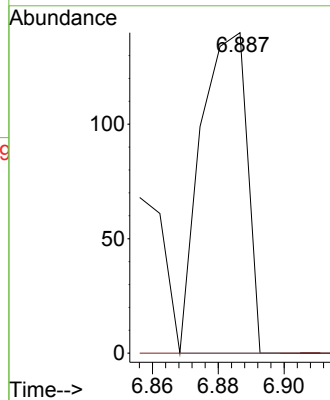
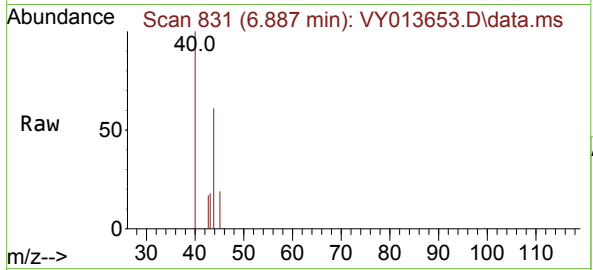




#25
 2-Butanone
 Concen: 9.658 ug/l
 RT: 6.887 min Scan# 811
 Delta R.T. -0.097 min
 Lab File: VY013653.D
 Acq: 08 May 2023 17:22

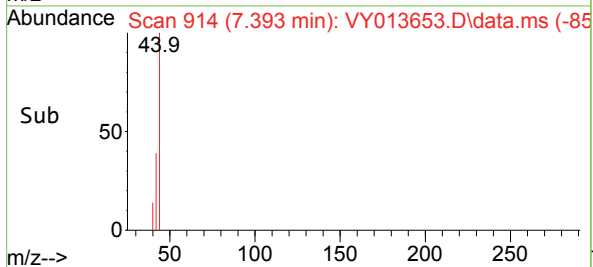
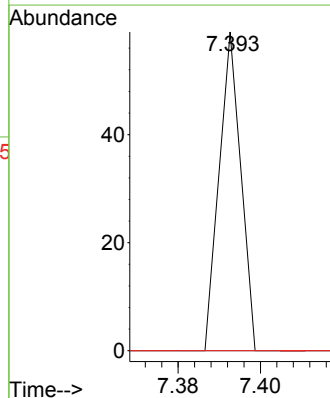
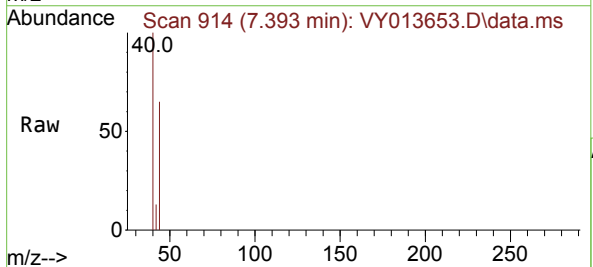
Instrument : MSVOA_Y
 ClientSampleId : SU-02-050823

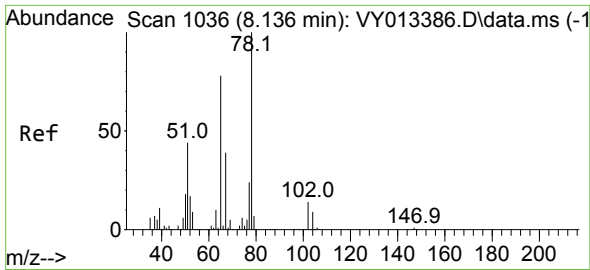
Tgt Ion: 43 Resp: 136
 Ion Ratio Lower Upper
 43 100
 72 0.0 21.9 32.9#



#29
 Tetrahydrofuran
 Concen: 2.510 ug/l
 RT: 7.393 min Scan# 914
 Delta R.T. 0.049 min
 Lab File: VY013653.D
 Acq: 08 May 2023 17:22

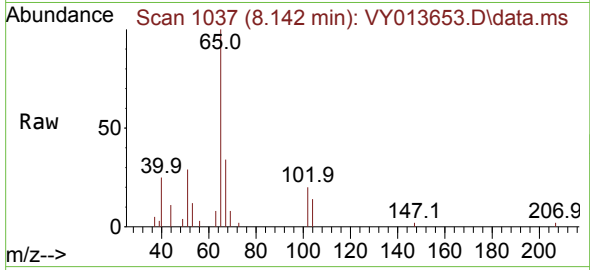
Tgt Ion: 42 Resp: 22
 Ion Ratio Lower Upper
 42 100
 72 0.0 35.9 53.9#
 71 0.0 34.3 51.5#



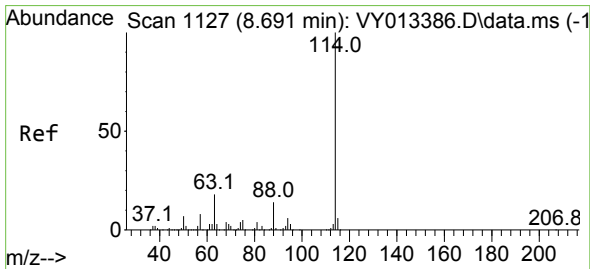
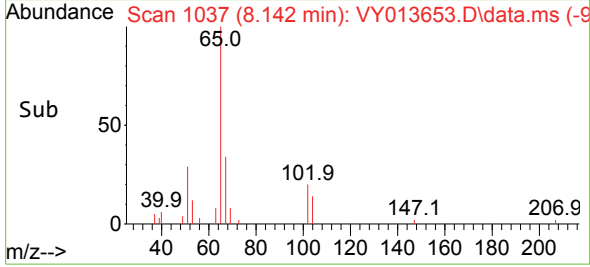
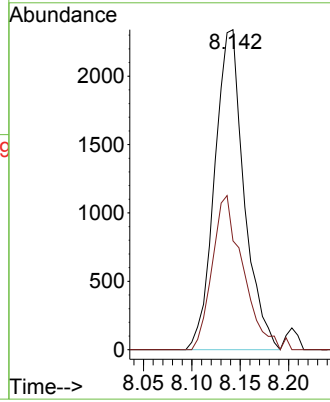


#33
 1,2-Dichloroethane-d4
 Concen: 175.706 ug/l
 RT: 8.142 min Scan# 1037
 Delta R.T. 0.006 min
 Lab File: VY013653.D
 Acq: 08 May 2023 17:22

Instrument : MSVOA_Y
 ClientSampleId : SU-02-050823

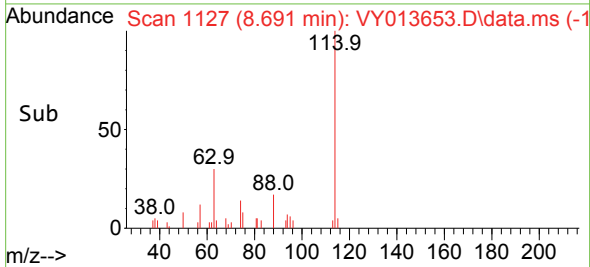
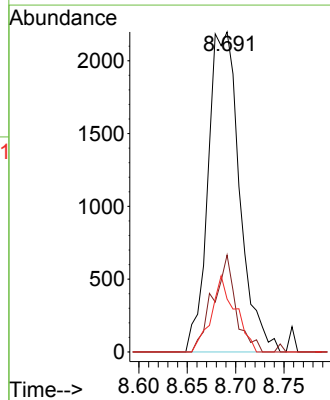
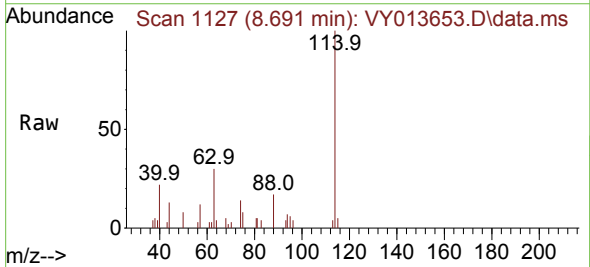


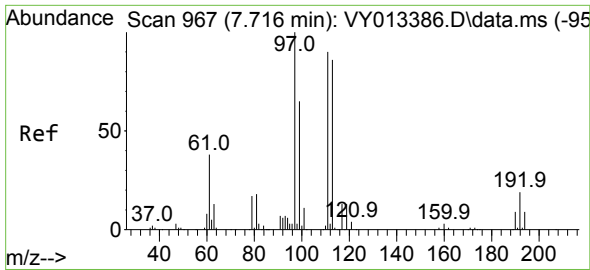
Tgt Ion: 65 Resp: 4954
 Ion Ratio Lower Upper
 65 100
 67 50.6 0.0 103.4



#34
 1,4-Difluorobenzene
 Concen: 50.000 ug/l
 RT: 8.691 min Scan# 1127
 Delta R.T. 0.000 min
 Lab File: VY013653.D
 Acq: 08 May 2023 17:22

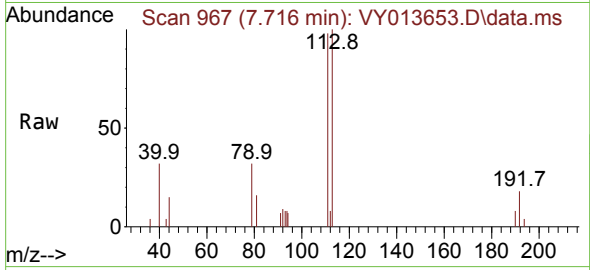
Tgt Ion: 114 Resp: 4976
 Ion Ratio Lower Upper
 114 100
 63 30.3 0.0 36.6
 88 16.6 0.0 28.8



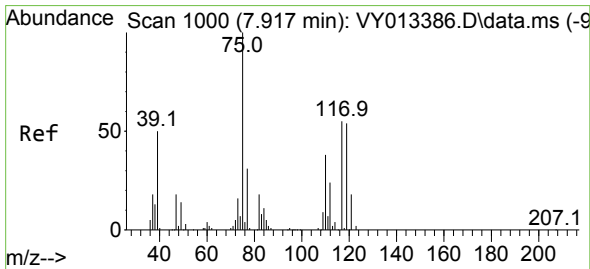
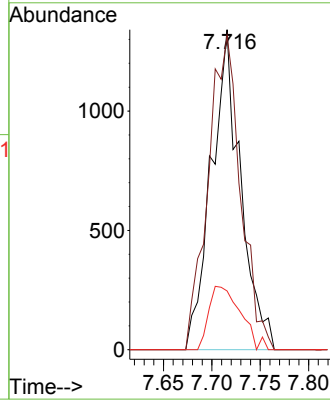
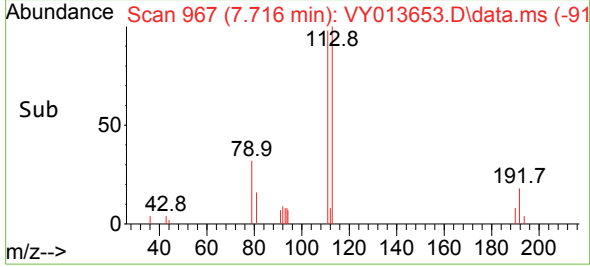


#35
 Dibromofluoromethane
 Concen: 90.297 ug/l
 RT: 7.716 min Scan# 90
 Delta R.T. -0.000 min
 Lab File: VY013653.D
 Acq: 08 May 2023 17:22

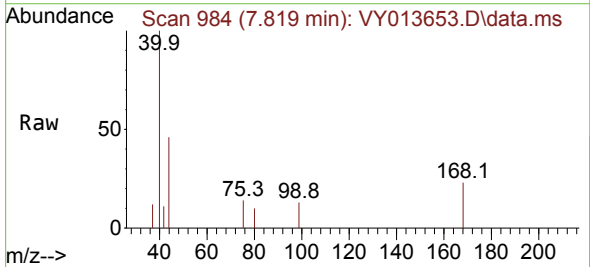
Instrument : MSVOA_Y
 ClientSampleId : SU-02-050823



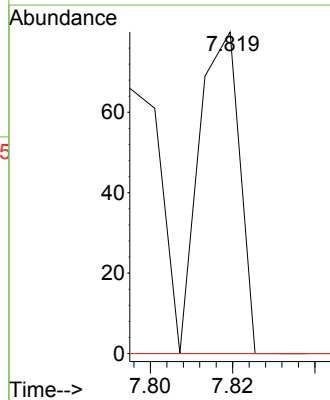
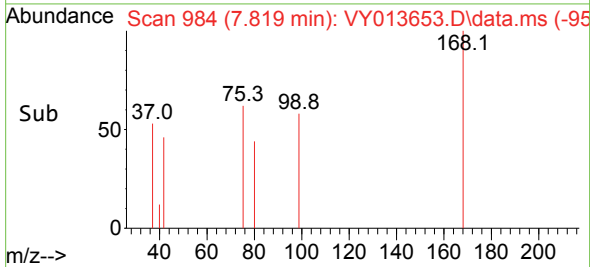
Tgt Ion:113 Resp: 2826
 Ion Ratio Lower Upper
 113 100
 111 109.0 82.2 123.2
 192 21.5 16.7 25.1

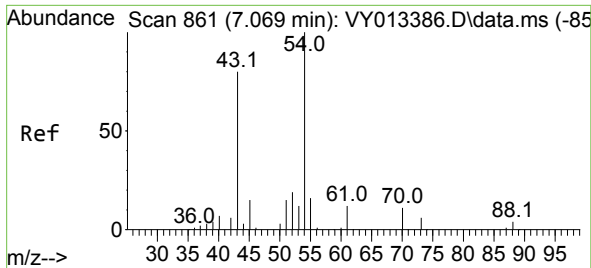


#36
 1,1-Dichloropropene
 Concen: 1.040 ug/l
 RT: 7.819 min Scan# 984
 Delta R.T. -0.098 min
 Lab File: VY013653.D
 Acq: 08 May 2023 17:22



Tgt Ion: 75 Resp: 54
 Ion Ratio Lower Upper
 75 100
 110 0.0 18.7 56.1#
 77 0.0 24.6 37.0#

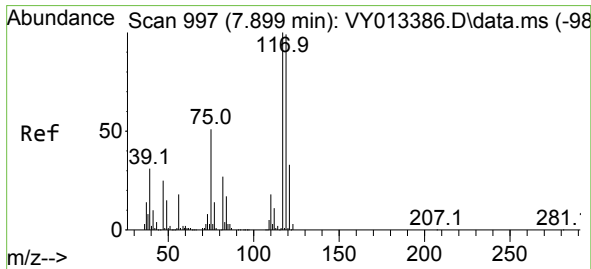
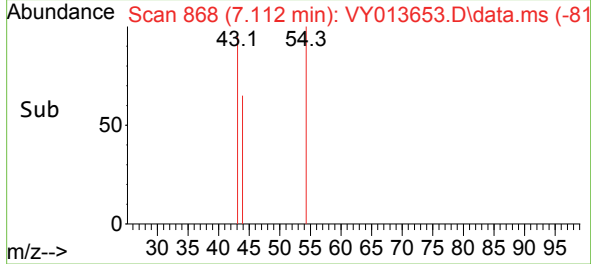
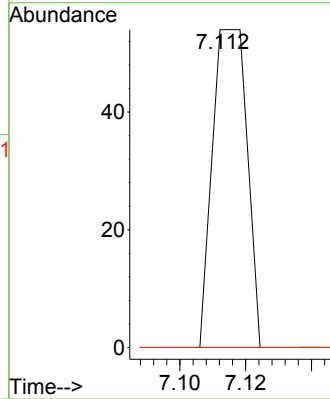
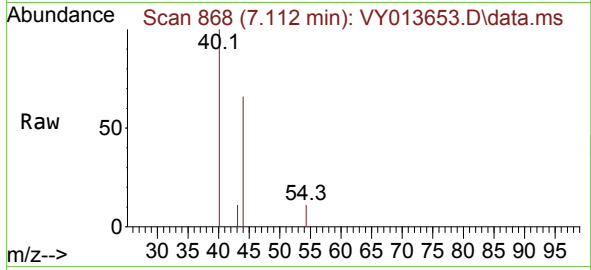




#37
 Ethyl Acetate
 Concen: 1.023 ug/l
 RT: 7.112 min Scan# 80
 Delta R.T. 0.043 min
 Lab File: VY013653.D
 Acq: 08 May 2023 17:22

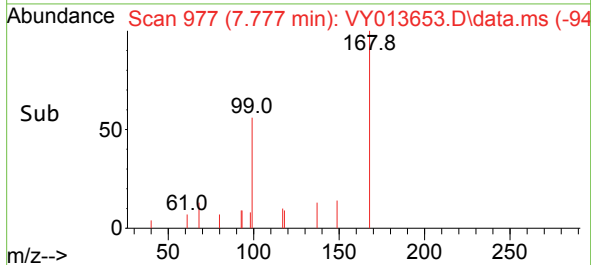
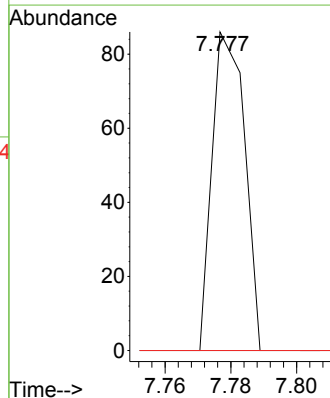
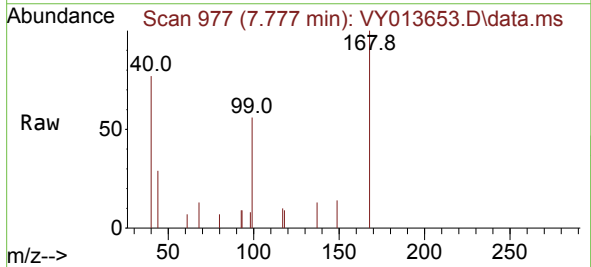
Instrument :
 MSVOA_Y
 ClientSampleId :
 SU-02-050823

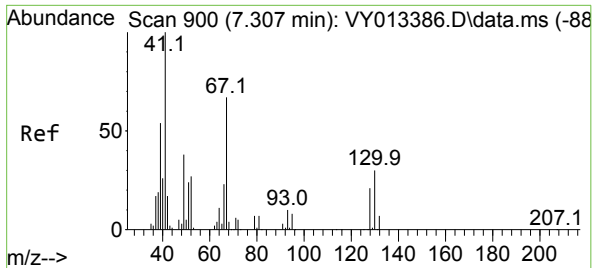
Tgt Ion	Resp	Lower	Upper
43	100		
61	0.0	11.4	17.0#
70	0.0	7.9	11.9#



#38
 Carbon Tetrachloride
 Concen: 1.084 ug/l
 RT: 7.777 min Scan# 977
 Delta R.T. -0.122 min
 Lab File: VY013653.D
 Acq: 08 May 2023 17:22

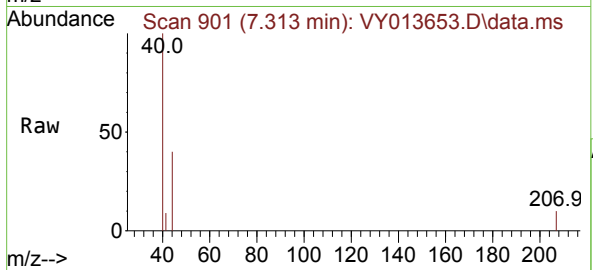
Tgt Ion	Resp	Lower	Upper
117	100		
119	0.0	79.0	118.6#
121	0.0	26.6	40.0#





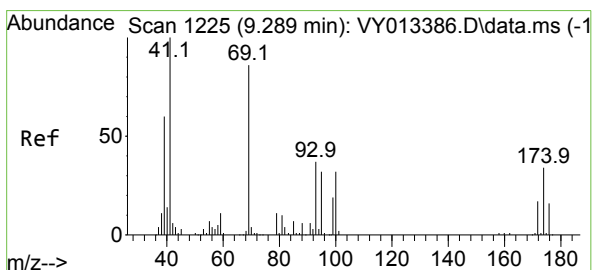
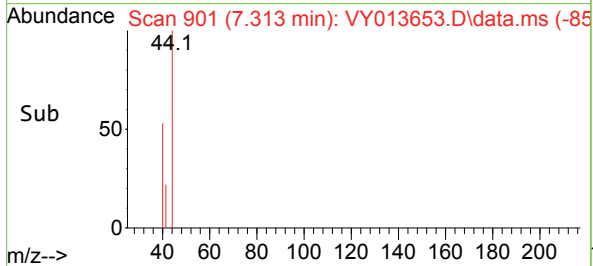
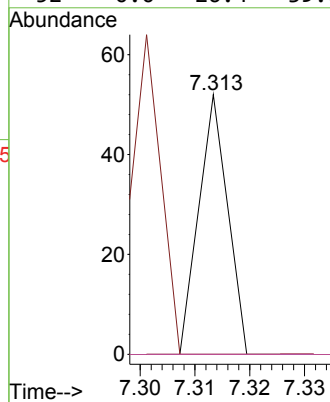
#41
 Methacrylonitrile
 Concen: 1.043 ug/l
 RT: 7.313 min Scan# 900
 Delta R.T. 0.006 min
 Lab File: VY013653.D
 Acq: 08 May 2023 17:22

Instrument :
 MSVOA_Y
 ClientSampleId :
 SU-02-050823

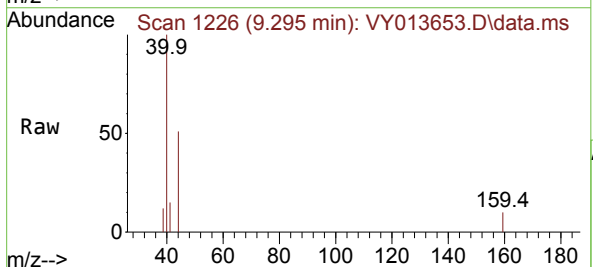


Tgt Ion: 41 Resp: 19

Ion	Ratio	Lower	Upper
41	100		
39	121.1	44.2	66.4#
67	0.0	62.9	94.3#
52	0.0	26.4	39.6#

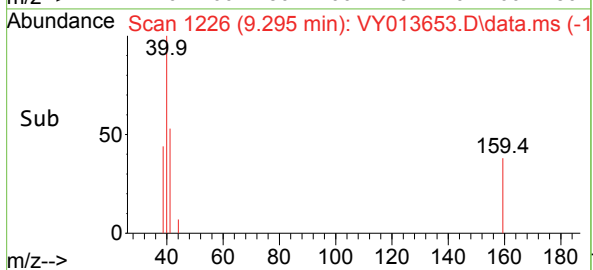
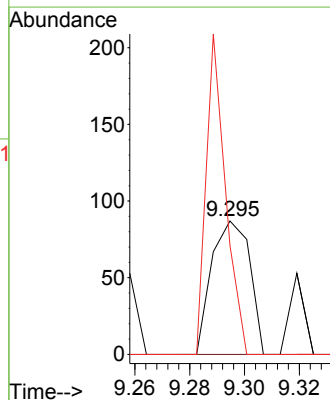


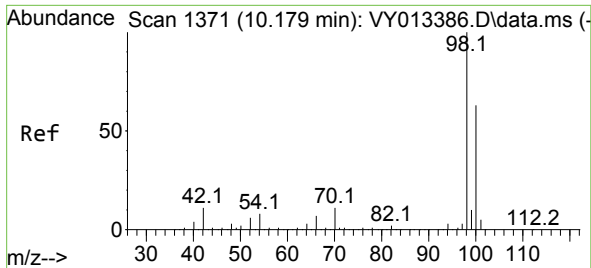
#48
 Methyl methacrylate
 Concen: 2.772 ug/l
 RT: 9.295 min Scan# 1226
 Delta R.T. 0.006 min
 Lab File: VY013653.D
 Acq: 08 May 2023 17:22



Tgt Ion: 41 Resp: 84

Ion	Ratio	Lower	Upper
41	100		
69	0.0	70.2	105.4#
39	121.4	47.9	71.9#

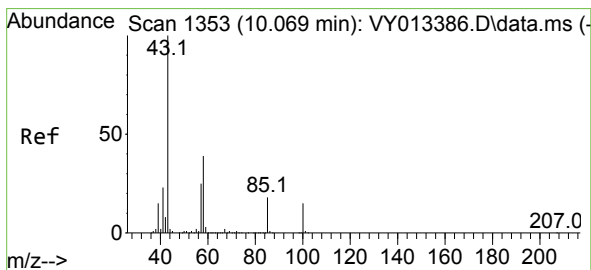
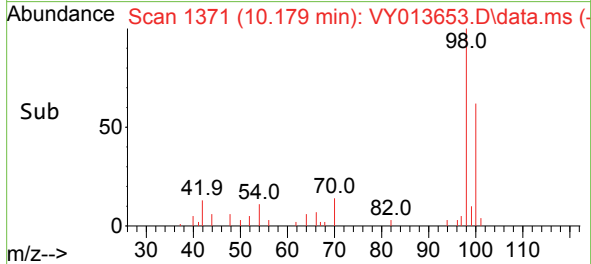
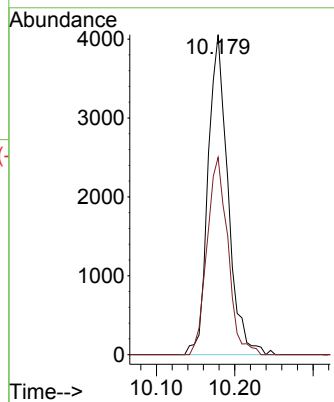
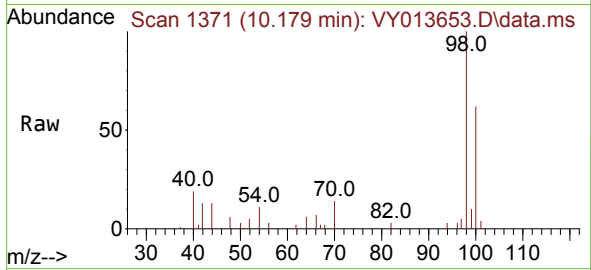




#50
 Toluene-d8
 Concen: 64.247 ug/l
 RT: 10.179 min Scan# 111
 Delta R.T. -0.000 min
 Lab File: VY013653.D
 Acq: 08 May 2023 17:22

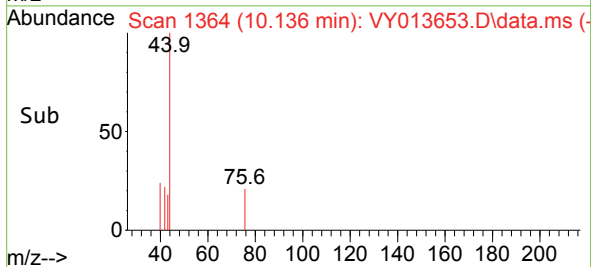
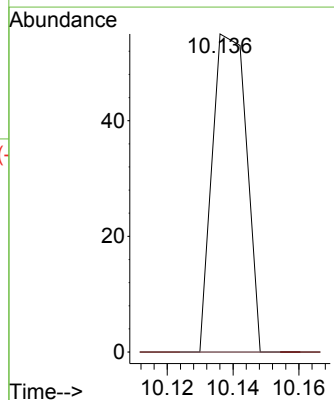
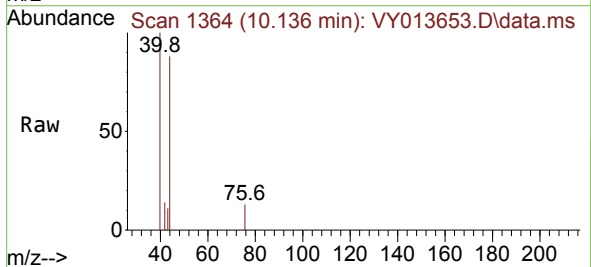
Instrument : MSVOA_Y
 ClientSampleId : SU-02-050823

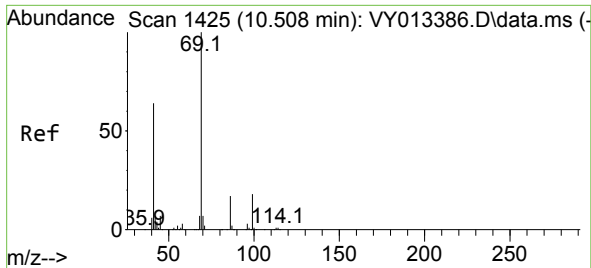
Tgt Ion: 98 Resp: 7153
 Ion Ratio Lower Upper
 98 100
 100 64.5 50.5 75.7



#51
 4-Methyl-2-Pentanone
 Concen: 1.061 ug/l
 RT: 10.136 min Scan# 1364
 Delta R.T. 0.067 min
 Lab File: VY013653.D
 Acq: 08 May 2023 17:22

Tgt Ion: 43 Resp: 39
 Ion Ratio Lower Upper
 43 100
 58 0.0 30.6 46.0#

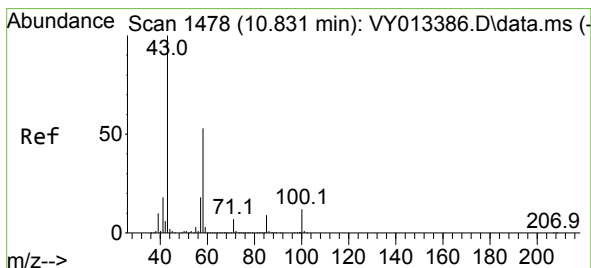
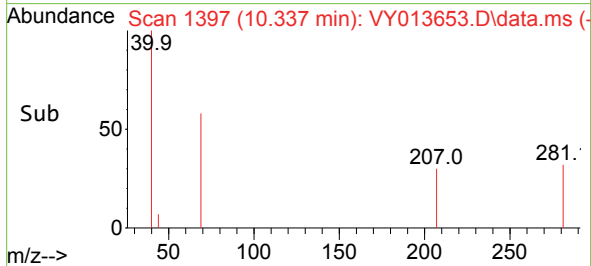
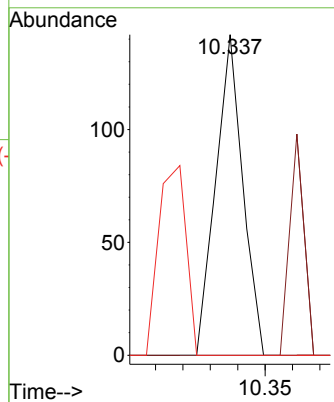
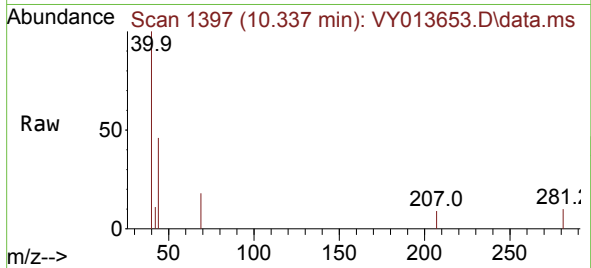




#56
 Ethyl methacrylate
 Concen: 2.307 ug/l
 RT: 10.337 min Scan# 11
 Delta R.T. -0.171 min
 Lab File: VY013653.D
 Acq: 08 May 2023 17:22

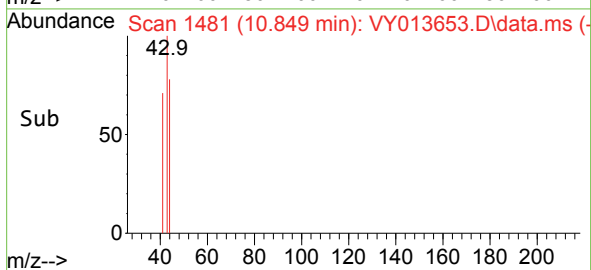
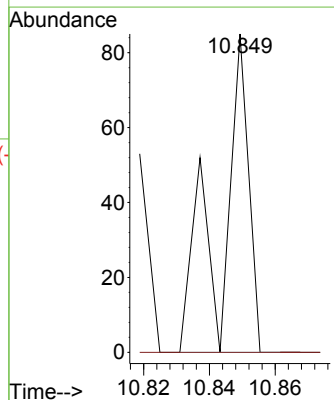
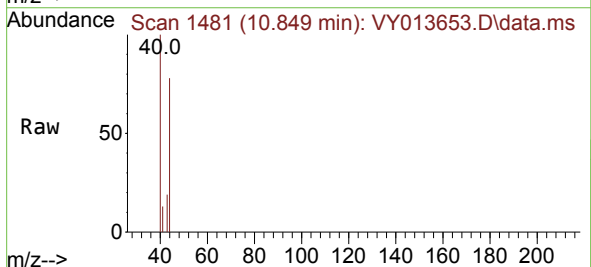
Instrument :
 MSVOA_Y
 ClientSampleId :
 SU-02-050823

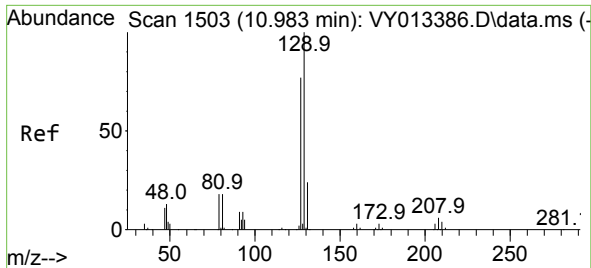
Tgt Ion	Resp	Lower	Upper
69	100		
41	0.0	51.4	77.0#
39	60.8	29.0	43.6#



#59
 2-Hexanone
 Concen: 1.871 ug/l
 RT: 10.849 min Scan# 1481
 Delta R.T. 0.018 min
 Lab File: VY013653.D
 Acq: 08 May 2023 17:22

Tgt Ion	Resp	Lower	Upper
43	100		
58	0.0	26.3	78.8#

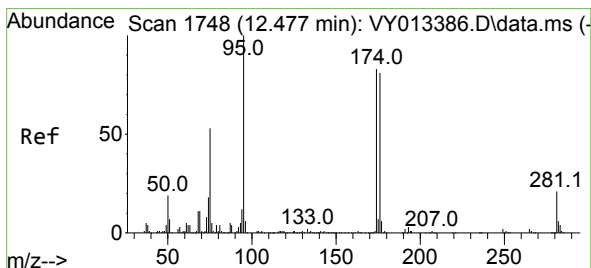
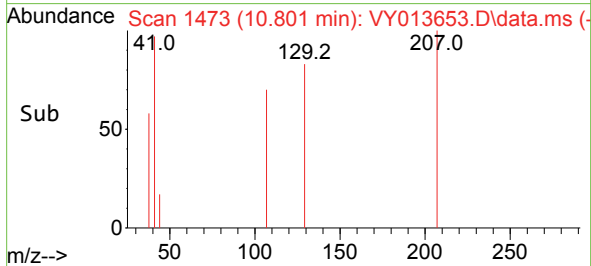
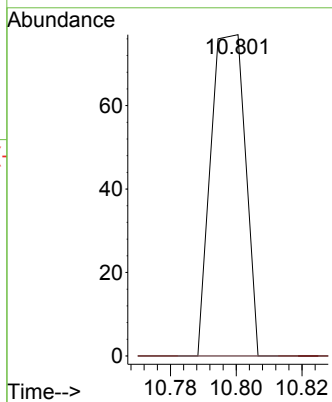
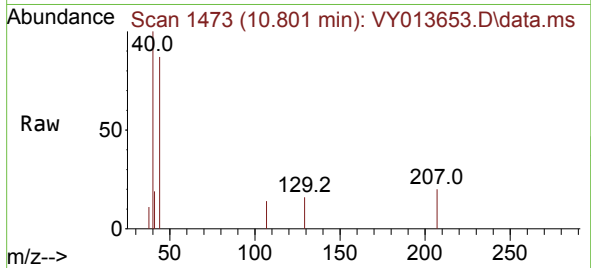




#60
 Dibromochloromethane
 Concen: 1.521 ug/l
 RT: 10.801 min Scan# 14
 Delta R.T. -0.182 min
 Lab File: VY013653.D
 Acq: 08 May 2023 17:22

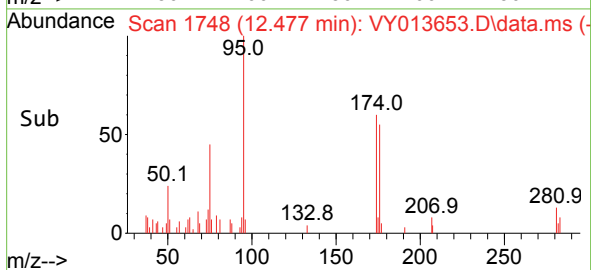
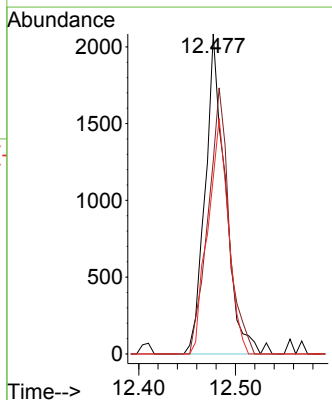
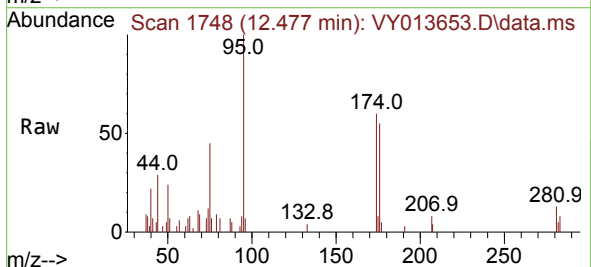
Instrument :
 MSVOA_Y
 ClientSampleId :
 SU-02-050823

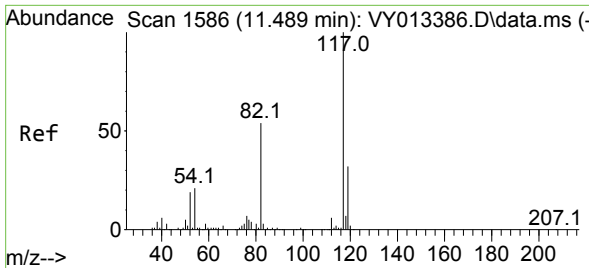
Tgt Ion:129 Resp: 56
 Ion Ratio Lower Upper
 129 100
 127 0.0 38.7 116.1#



#62
 4-Bromofluorobenzene
 Concen: 80.727 ug/l
 RT: 12.477 min Scan# 1748
 Delta R.T. 0.000 min
 Lab File: VY013653.D
 Acq: 08 May 2023 17:22

Tgt Ion: 95 Resp: 3030
 Ion Ratio Lower Upper
 95 100
 174 85.8 0.0 182.0
 176 74.9 0.0 175.4



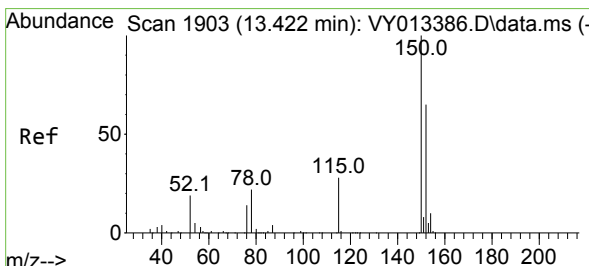
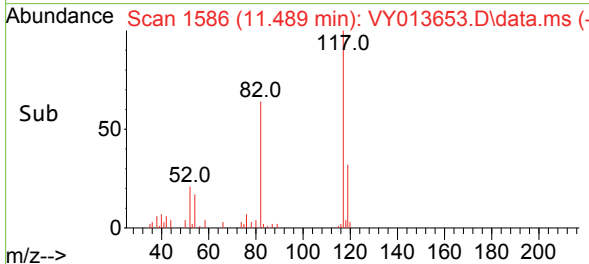
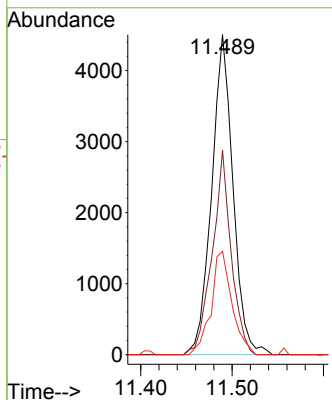
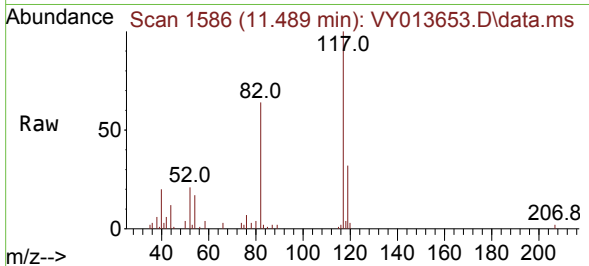


#63
 Chlorobenzene-d5
 Concen: 50.000 ug/l
 RT: 11.489 min Scan# 11
 Delta R.T. 0.000 min
 Lab File: VY013653.D
 Acq: 08 May 2023 17:22

Instrument :
 MSVOA_Y
 ClientSampleId :
 SU-02-050823

Tgt Ion:117 Resp: 7303

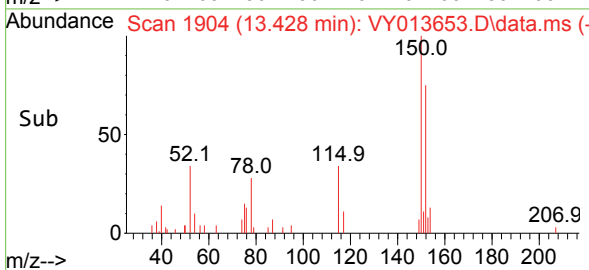
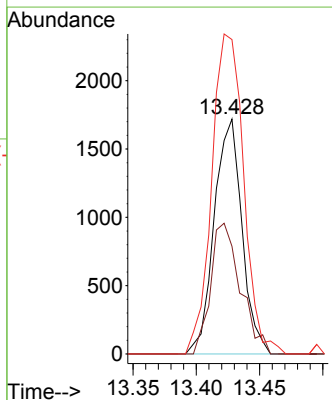
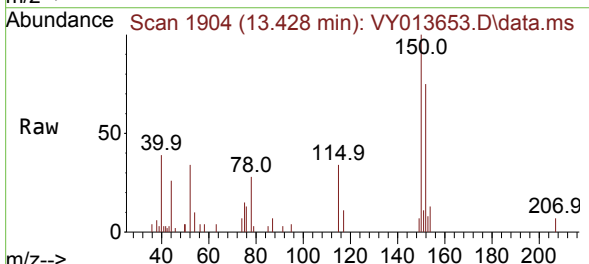
Ion	Ratio	Lower	Upper
117	100		
82	64.0	43.0	64.6
119	32.3	25.5	38.3

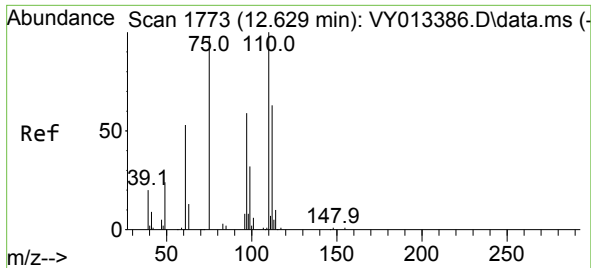


#72
 1,4-Dichlorobenzene-d4
 Concen: 50.000 ug/l
 RT: 13.428 min Scan# 1904
 Delta R.T. 0.006 min
 Lab File: VY013653.D
 Acq: 08 May 2023 17:22

Tgt Ion:152 Resp: 2620

Ion	Ratio	Lower	Upper
152	100		
115	60.0	28.1	84.2
150	156.7	0.0	352.0

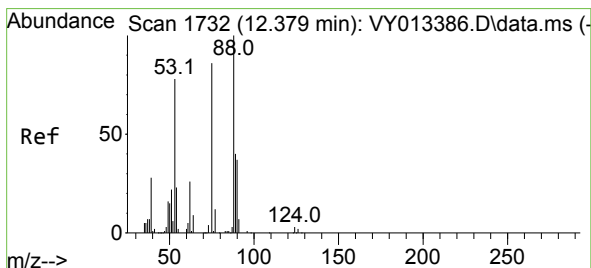
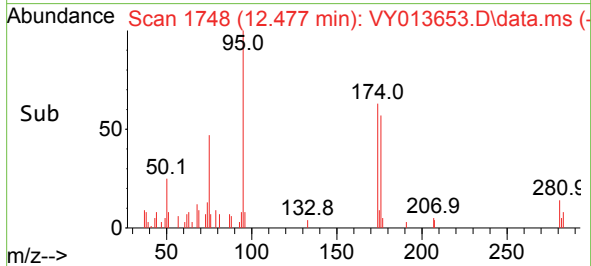
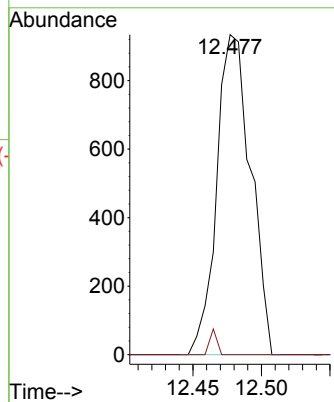
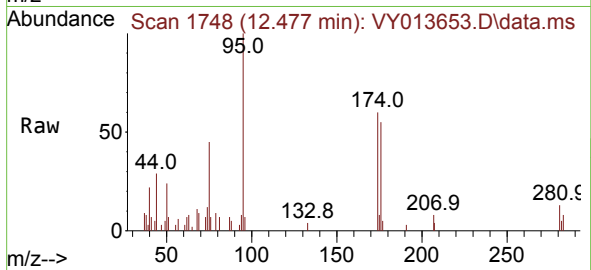




#76
 1,2,3-Trichloropropane
 Concen: 45.622 ug/l
 RT: 12.477 min Scan# 1748
 Delta R.T. -0.152 min
 Lab File: VY013653.D
 Acq: 08 May 2023 17:22

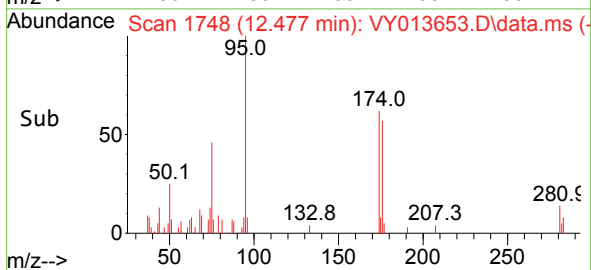
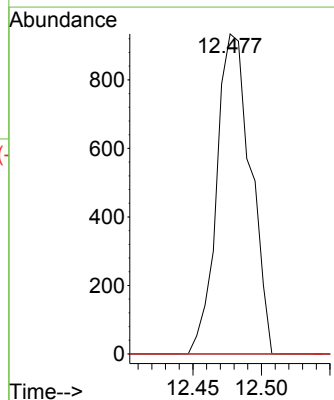
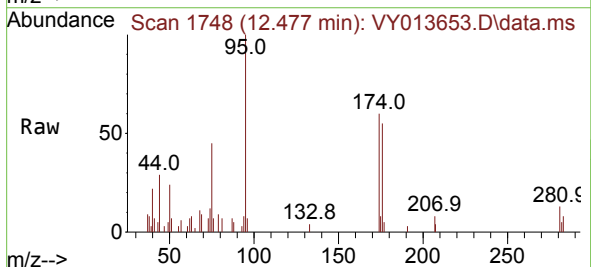
Instrument : MSVOA_Y
 ClientSampleId : SU-02-050823

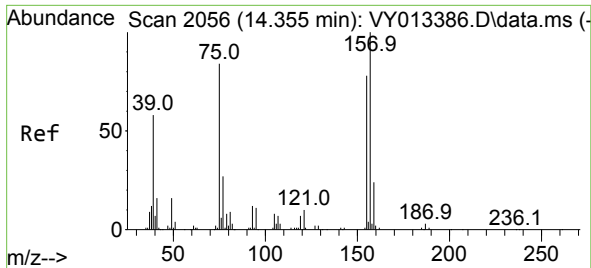
Tgt Ion: 75 Resp: 1612
 Ion Ratio Lower Upper
 75 100
 77 1.7 0.0 0.0#



#81
 trans-1,4-Dichloro-2-butene
 Concen: 93.322 ug/l
 RT: 12.477 min Scan# 1748
 Delta R.T. 0.098 min
 Lab File: VY013653.D
 Acq: 08 May 2023 17:22

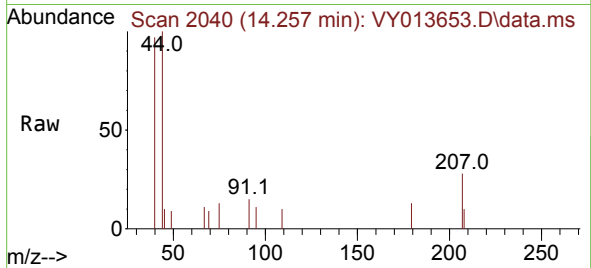
Tgt Ion: 75 Resp: 1612
 Ion Ratio Lower Upper
 75 100
 53 0.0 73.2 109.8#
 89 0.0 38.0 57.0#





#92
 1,2-Dibromo-3-Chloropropane
 Concen: 3.390 ug/l
 RT: 14.257 min Scan# 20
 Delta R.T. -0.098 min
 Lab File: VY013653.D
 Acq: 08 May 2023 17:22

Instrument :
 MSVOA_Y
 ClientSampleId :
 SU-02-050823



Tgt Ion: 75 Resp: 29

Ion	Ratio	Lower	Upper
75	100		
155	0.0	44.6	134.0#
157	0.0	57.6	172.7#

