

Data Path : Z:\voasrv\HPCHEM1\MSVOA_Y\Data\VY051023\
 Data File : VY013685.D
 Acq On : 10 May 2023 14:10
 Operator : KP/MD
 Sample : 02723-05
 Misc : 5.28g/5.0mL/MSVOA_Y/SOIL
 ALS Vial : 10 Sample Multiplier: 1

Instrument :
 MSVOA_Y
 ClientSampleId :
 CB-14-G1-SO-18.5-050923

Quant Time: May 11 03:26:51 2023
 Quant Method : Z:\voasrv\HPCHEM1\MSVOA_Y\methods\82Y042423S.M
 Quant Title : SW846 8260
 QLast Update : Tue Apr 25 02:39:58 2023
 Response via : Initial Calibration

Compound	R.T.	QIon	Response	Conc Units	Dev(Min)

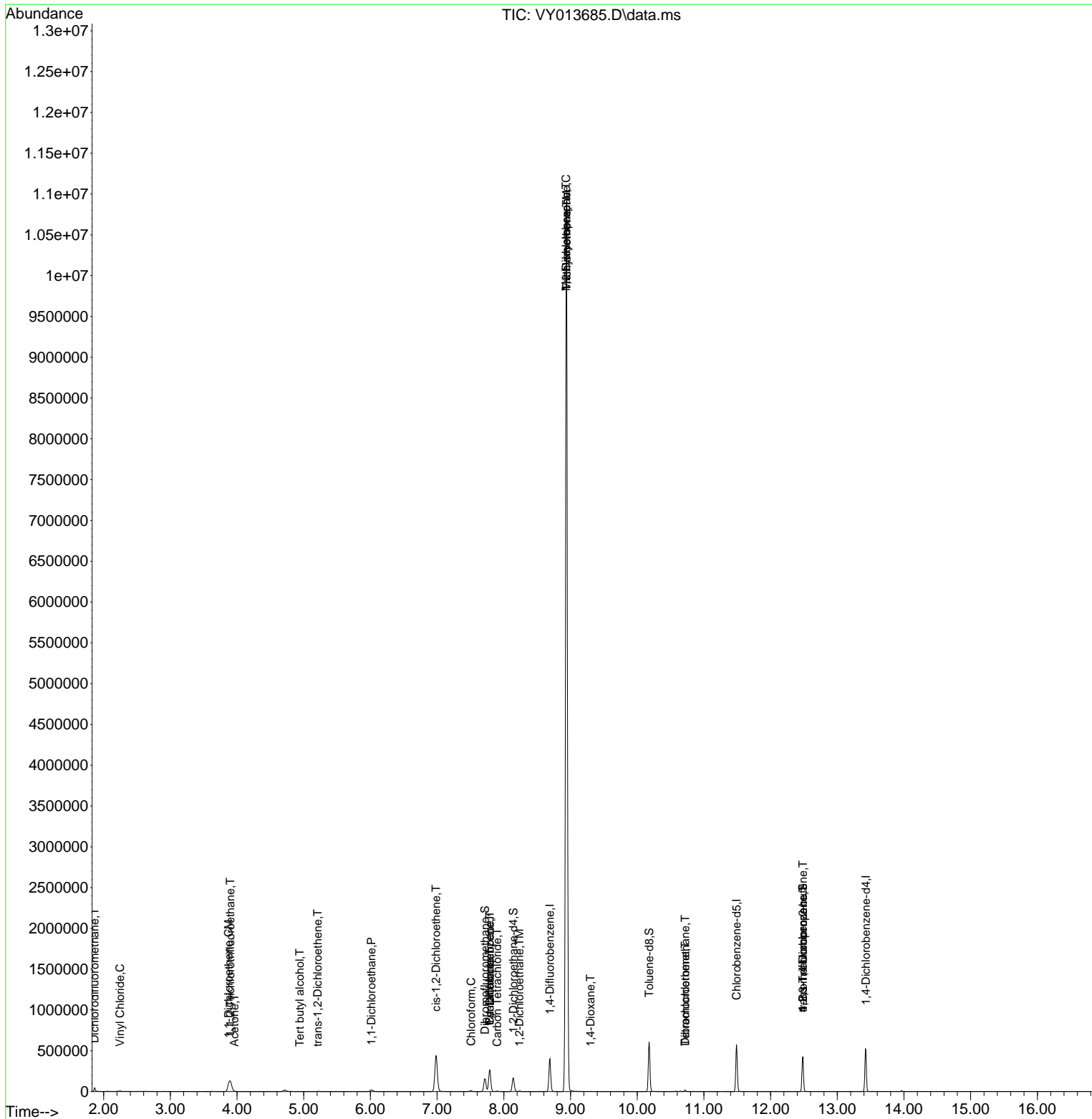
Internal Standards					
1) Pentafluorobenzene	7.789	168	203313	50.000 ug/l	0.00
34) 1,4-Difluorobenzene	8.691	114	326106	50.000 ug/l	0.00
63) Chlorobenzene-d5	11.489	117	302979	50.000 ug/l	0.00
72) 1,4-Dichlorobenzene-d4	13.428	152	136325	50.000 ug/l	0.00
System Monitoring Compounds					
33) 1,2-Dichloroethane-d4	8.142	65	135215	60.668 ug/l	0.00
Spiked Amount	50.000	Range 50 - 163	Recovery	= 121.340%	
35) Dibromofluoromethane	7.716	113	108950	53.119 ug/l	0.00
Spiked Amount	50.000	Range 54 - 147	Recovery	= 106.240%	
50) Toluene-d8	10.179	98	394661	54.089 ug/l	0.00
Spiked Amount	50.000	Range 58 - 134	Recovery	= 108.180%	
62) 4-Bromofluorobenzene	12.483	95	119977	48.775 ug/l	0.00
Spiked Amount	50.000	Range 30 - 143	Recovery	= 97.540%	
Target Compounds					
					Qvalue
2) Dichlorodifluoromethane	1.863	85	2648	1.370 ug/l	99
4) Vinyl Chloride	2.247	62	4978	1.930 ug/l	96
9) 1,1,2-Trichlorotrifluo...	3.899	101	65360	29.817 ug/l	98
11) Tert butyl alcohol	4.942	59	538	2.787 ug/l #	86
12) 1,1-Dichloroethene	3.875	96	35134	16.628 ug/l	88
13) Acrolein	3.479	56	32	Below Cal #	16
16) Acetone	3.960	43	3280	3.737 ug/l	91
20) Methylene Chloride	4.716	84	13334	Below Cal	91
21) trans-1,2-Dichloroethene	5.210	96	2486	1.076 ug/l #	52
24) 1,1-Dichloroethane	6.015	63	27604	6.463 ug/l	95
27) cis-1,2-Dichloroethene	6.984	96	271287	106.279 ug/l	92
30) Chloroform	7.508	83	9095	2.142 ug/l	86
31) Cyclohexane	7.789	56	4584	1.149 ug/l #	44
36) 1,1-Dichloropropene	7.789	75	16376	4.811 ug/l #	49
38) Carbon Tetrachloride	7.898	117	3950	1.107 ug/l	87
39) Methylcyclohexane	8.935	83	47351	11.799 ug/l #	1
42) 1,2-Dichloroethane	8.234	62	6089	1.942 ug/l	98
44) Trichloroethene	8.941	130	3587158	1406.401 ug/l	94
45) 1,2-Dichloropropane	8.935	63	8819	3.518 ug/l #	1
49) 1,4-Dioxane	9.301	88	1574	73.467 ug/l	96
60) Dibromochloromethane	10.721	129	3243	1.344 ug/l #	11
64) Tetrachloroethene	10.721	164	3650	1.584 ug/l	92
76) 1,2,3-Trichloropropane	12.483	75	65758	35.767 ug/l #	100
81) trans-1,4-Dichloro-2-b...	12.483	75	65758	73.163 ug/l #	13

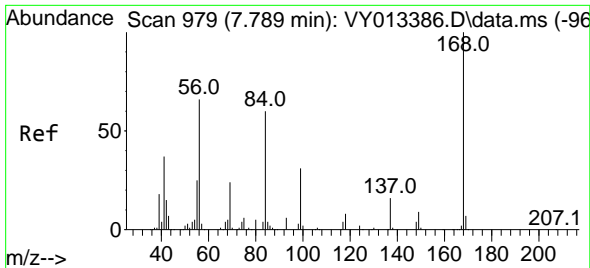
(#) = qualifier out of range (m) = manual integration (+) = signals summed

Data Path : Z:\voasrv\HPCHEM1\MSVOA_Y\Data\VY051023\
 Data File : VY013685.D
 Acq On : 10 May 2023 14:10
 Operator : KP/MD
 Sample : 02723-05
 Misc : 5.28g/5.0mL/MSVOA_Y/SOIL
 ALS Vial : 10 Sample Multiplier: 1

Instrument :
 MSVOA_Y
 ClientSampleId :
 CB-14-G1-SO-18.5-050923

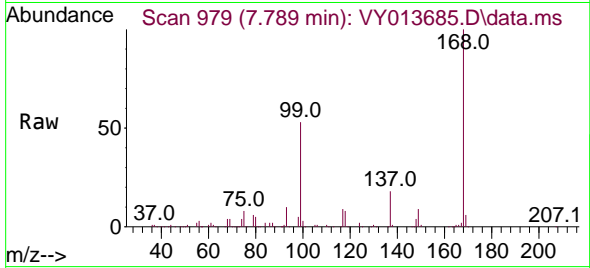
Quant Time: May 11 03:26:51 2023
 Quant Method : Z:\voasrv\HPCHEM1\MSVOA_Y\methods\82Y042423S.M
 Quant Title : SW846 8260
 QLast Update : Tue Apr 25 02:39:58 2023
 Response via : Initial Calibration



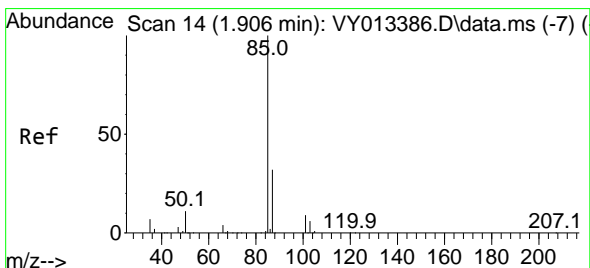
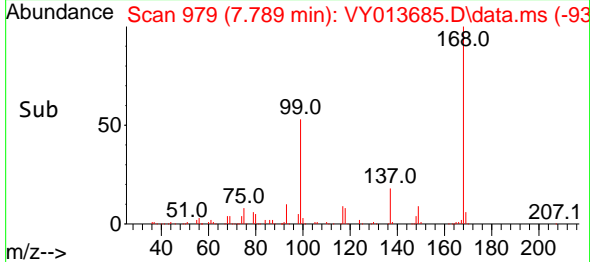
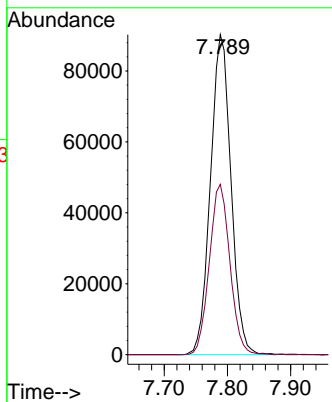


#1
 Pentafluorobenzene
 Concen: 50.000 ug/l
 RT: 7.789 min Scan# 91
 Delta R.T. -0.000 min
 Lab File: VY013685.D
 Acq: 10 May 2023 14:10

Instrument : MSVOA_Y
 ClientSampleId : CB-14-G1-SO-18.5-050923

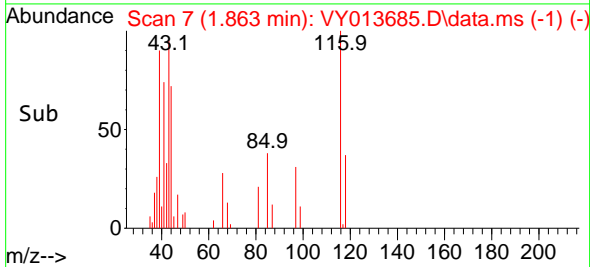
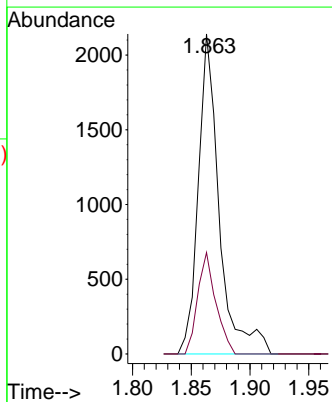
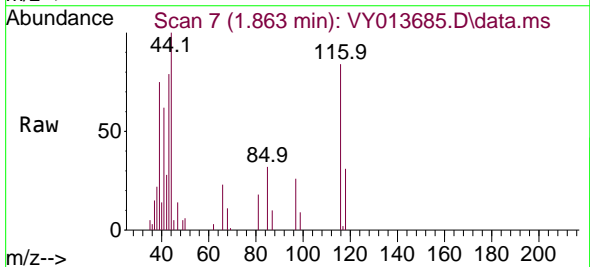


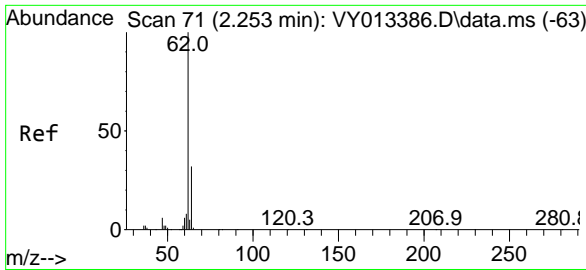
Tgt Ion:168 Resp: 203313
 Ion Ratio Lower Upper
 168 100
 99 53.3 41.8 62.6



#2
 Dichlorodifluoromethane
 Concen: 1.370 ug/l
 RT: 1.863 min Scan# 7
 Delta R.T. -0.043 min
 Lab File: VY013685.D
 Acq: 10 May 2023 14:10

Tgt Ion: 85 Resp: 2648
 Ion Ratio Lower Upper
 85 100
 87 31.7 16.1 48.2

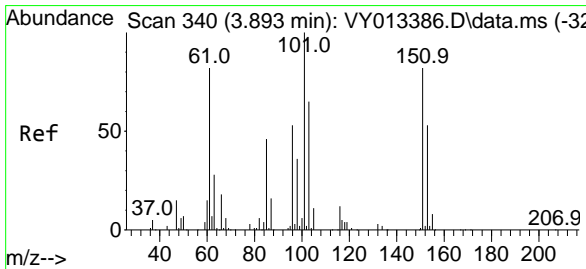
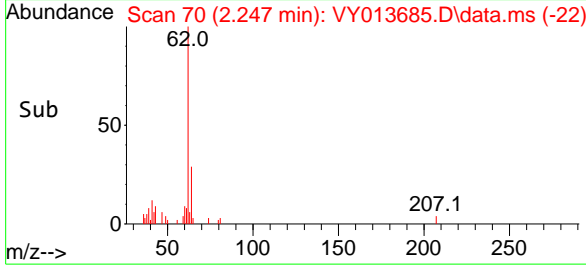
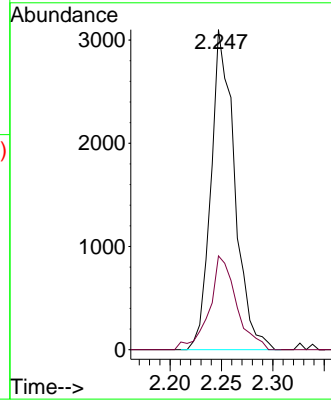
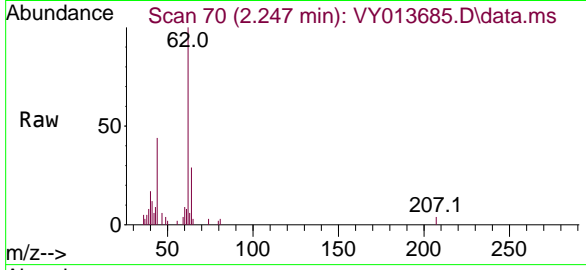




#4
 Vinyl Chloride
 Concen: 1.930 ug/l
 RT: 2.247 min Scan# 70
 Delta R.T. -0.006 min
 Lab File: VY013685.D
 Acq: 10 May 2023 14:10

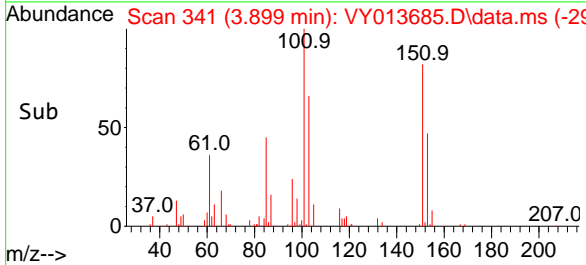
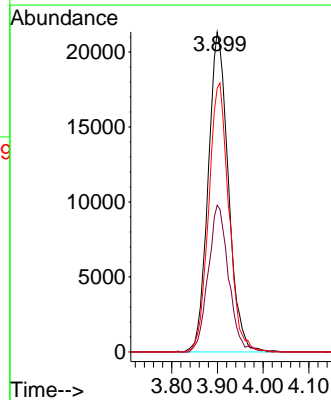
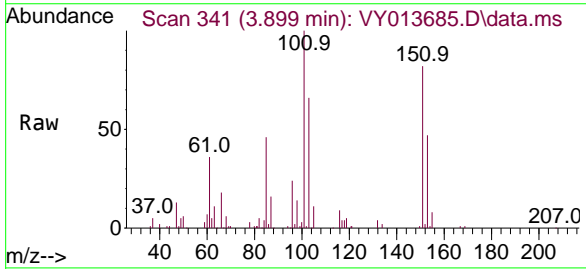
Instrument : MSVOA_Y
 ClientSampleId : CB-14-G1-SO-18.5-050923

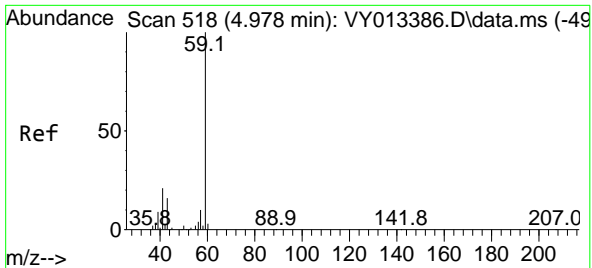
Tgt Ion: 62 Resp: 4978
 Ion Ratio Lower Upper
 62 100
 64 29.3 25.4 38.0



#9
 1,1,2-Trichlorotrifluoroethane
 Concen: 29.817 ug/l
 RT: 3.899 min Scan# 341
 Delta R.T. 0.006 min
 Lab File: VY013685.D
 Acq: 10 May 2023 14:10

Tgt Ion: 101 Resp: 65360
 Ion Ratio Lower Upper
 101 100
 85 46.5 35.6 53.4
 151 84.1 68.0 102.0

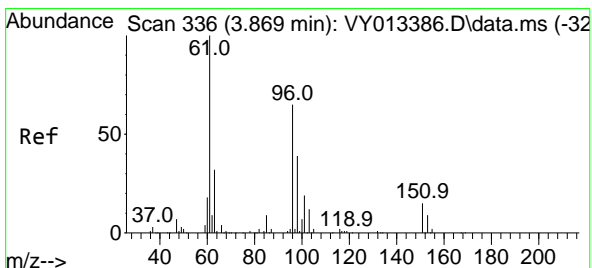
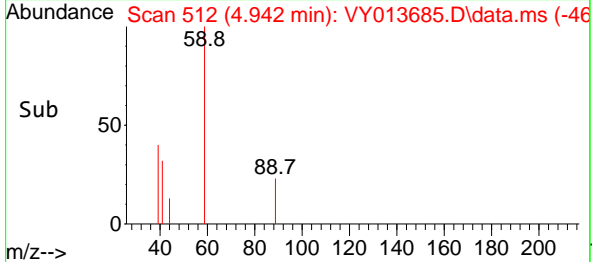
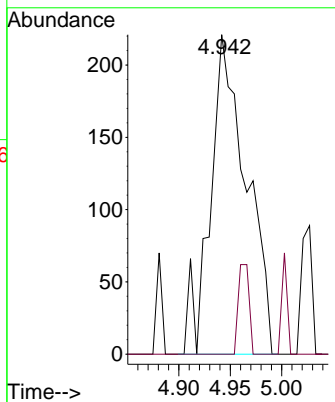
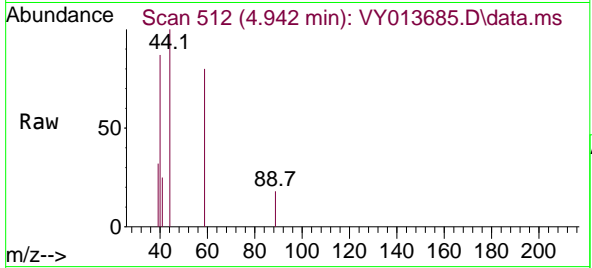




#11
 Tert butyl alcohol
 Concen: 2.787 ug/l
 RT: 4.942 min Scan# 512
 Delta R.T. -0.036 min
 Lab File: VY013685.D
 Acq: 10 May 2023 14:10

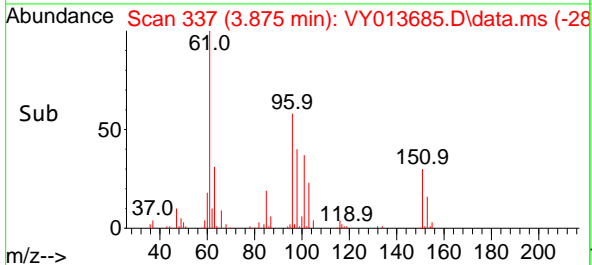
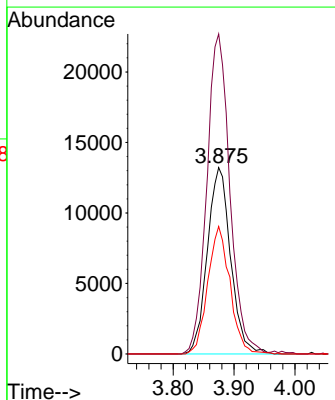
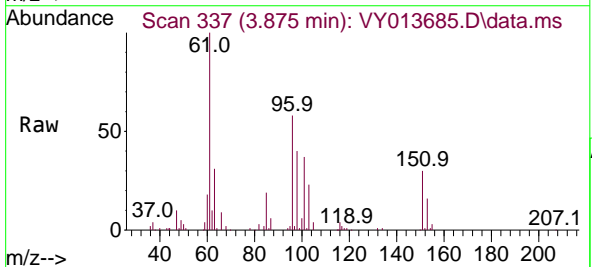
Instrument : MSVOA_Y
 ClientSampleId : CB-14-G1-SO-18.5-050923

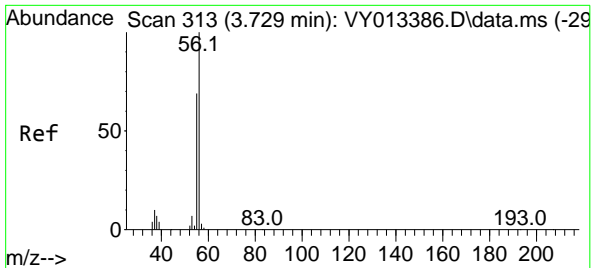
Tgt Ion: 59 Resp: 538
 Ion Ratio Lower Upper
 59 100
 57 8.4 3.0 4.4#



#12
 1,1-Dichloroethene
 Concen: 16.628 ug/l
 RT: 3.875 min Scan# 337
 Delta R.T. 0.006 min
 Lab File: VY013685.D
 Acq: 10 May 2023 14:10

Tgt Ion: 96 Resp: 35134
 Ion Ratio Lower Upper
 96 100
 61 171.6 123.9 185.9
 98 68.4 48.9 73.3

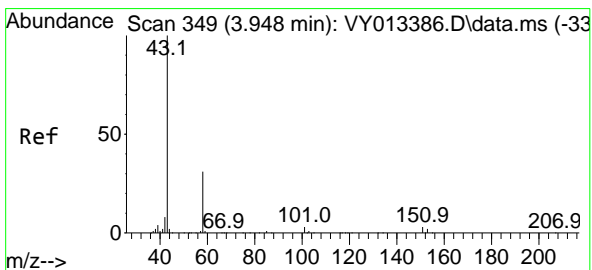
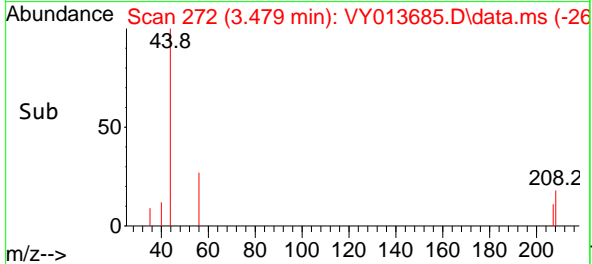
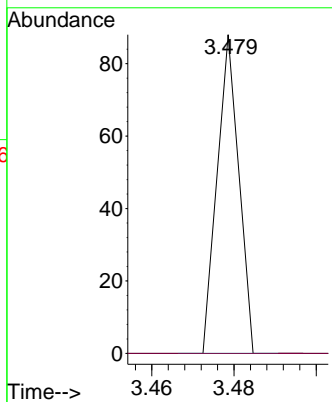
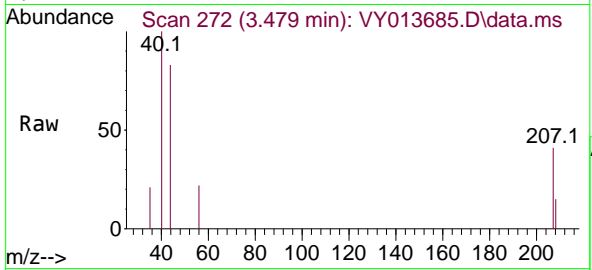




#13
 Acrolein
 Concen: Below Cal
 RT: 3.479 min Scan# 21
 Delta R.T. -0.250 min
 Lab File: VY013685.D
 Acq: 10 May 2023 14:10

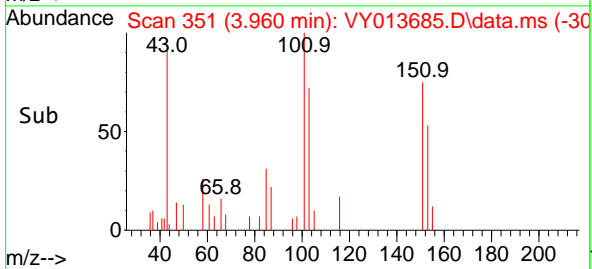
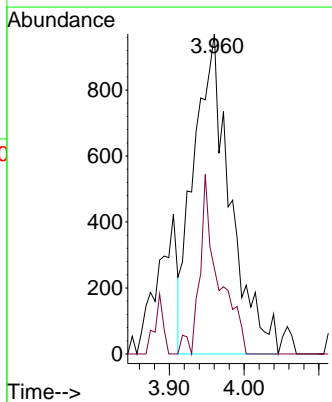
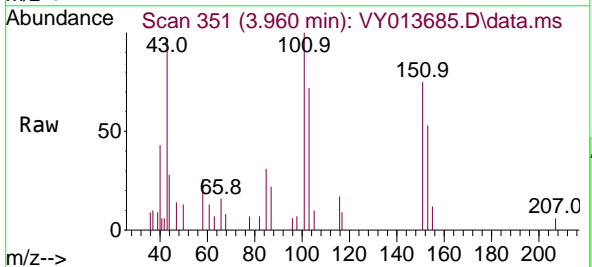
Instrument : MSVOA_Y
 ClientSampleId : CB-14-G1-SO-18.5-050923

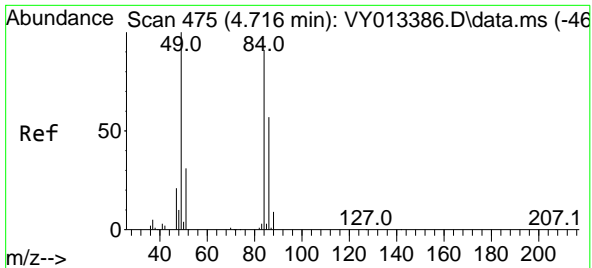
Tgt Ion: 56 Resp: 32
 Ion Ratio Lower Upper
 56 100
 55 0.0 54.1 81.1#



#16
 Acetone
 Concen: 3.737 ug/l
 RT: 3.960 min Scan# 351
 Delta R.T. 0.012 min
 Lab File: VY013685.D
 Acq: 10 May 2023 14:10

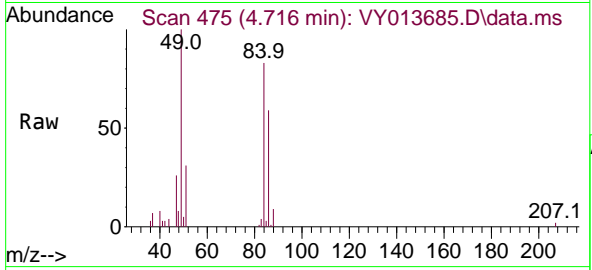
Tgt Ion: 43 Resp: 3280
 Ion Ratio Lower Upper
 43 100
 58 26.8 25.4 38.0





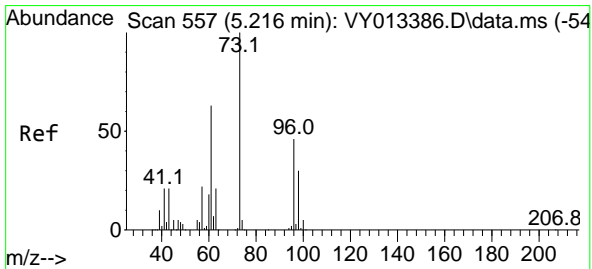
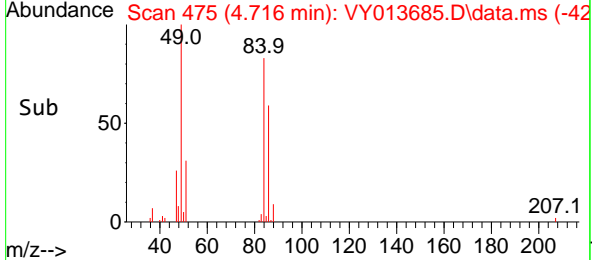
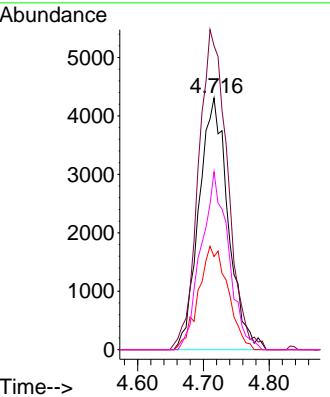
#20
 Methylene Chloride
 Concen: Below Cal
 RT: 4.716 min Scan# 41
 Delta R.T. 0.000 min
 Lab File: VY013685.D
 Acq: 10 May 2023 14:10

Instrument : MSVOA_Y
 ClientSampleId : CB-14-G1-SO-18.5-050923

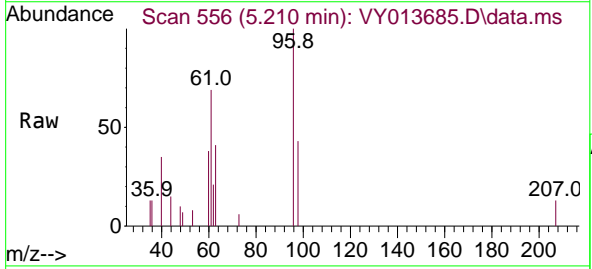


Tgt Ion: 84 Resp: 13334

Ion	Ratio	Lower	Upper
84	100		
49	120.7	88.0	132.0
51	37.0	27.4	41.0
86	70.7	50.4	75.6

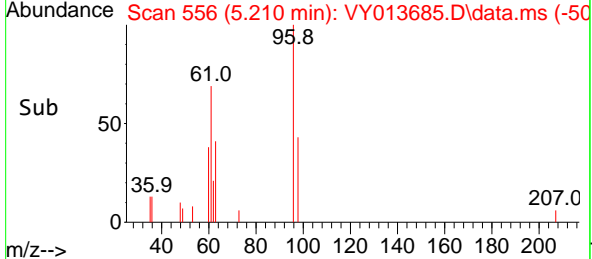
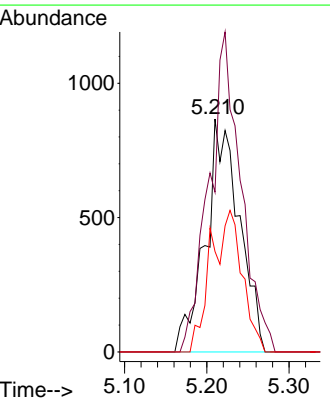


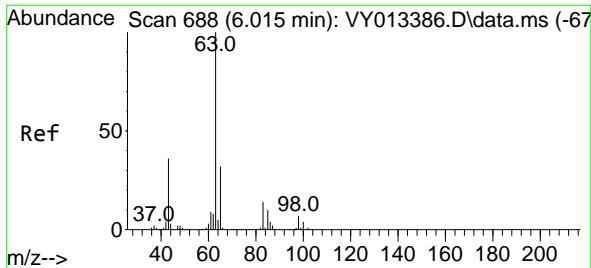
#21
 trans-1,2-Dichloroethene
 Concen: 1.076 ug/l
 RT: 5.210 min Scan# 556
 Delta R.T. -0.006 min
 Lab File: VY013685.D
 Acq: 10 May 2023 14:10



Tgt Ion: 96 Resp: 2486

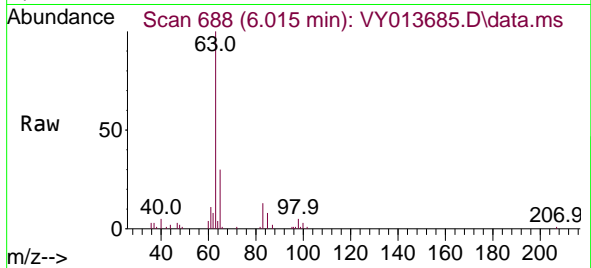
Ion	Ratio	Lower	Upper
96	100		
61	68.6	110.6	165.8#
98	43.1	53.1	79.7#





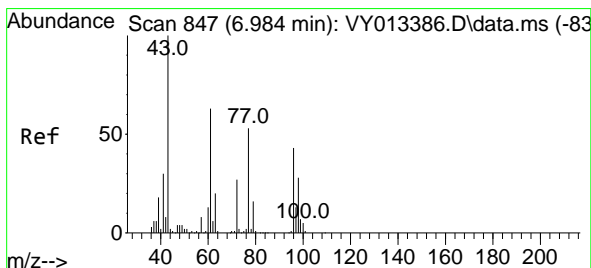
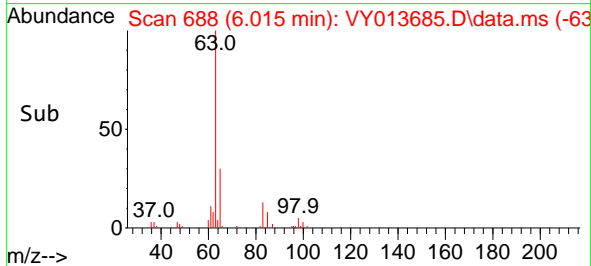
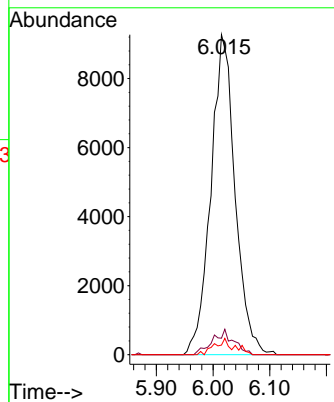
#24
 1,1-Dichloroethane
 Concen: 6.463 ug/l
 RT: 6.015 min Scan# 61
 Delta R.T. -0.000 min
 Lab File: VY013685.D
 Acq: 10 May 2023 14:10

Instrument : MSVOA_Y
 ClientSampleId : CB-14-G1-SO-18.5-050923



Tgt Ion: 63 Resp: 27604

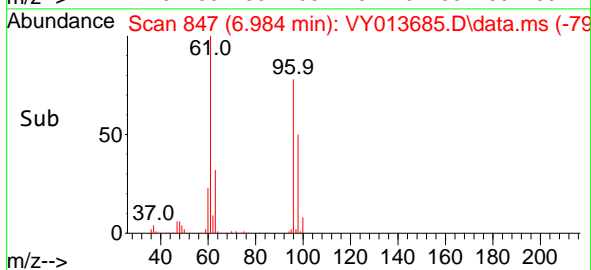
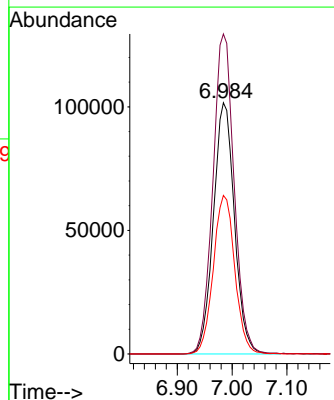
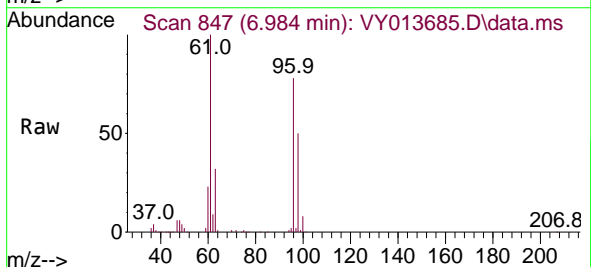
Ion	Ratio	Lower	Upper
63	100		
98	5.2	3.5	10.6
100	3.0	2.2	6.6

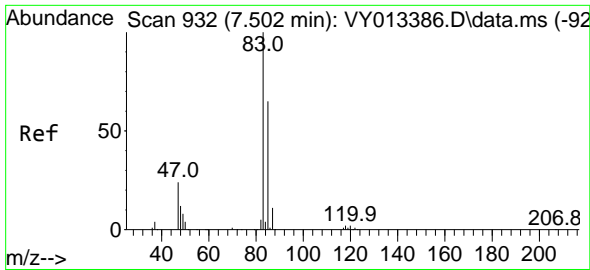


#27
 cis-1,2-Dichloroethene
 Concen: 106.279 ug/l
 RT: 6.984 min Scan# 847
 Delta R.T. 0.000 min
 Lab File: VY013685.D
 Acq: 10 May 2023 14:10

Tgt Ion: 96 Resp: 271287

Ion	Ratio	Lower	Upper
96	100		
61	128.6	0.0	285.0
98	64.4	0.0	130.6

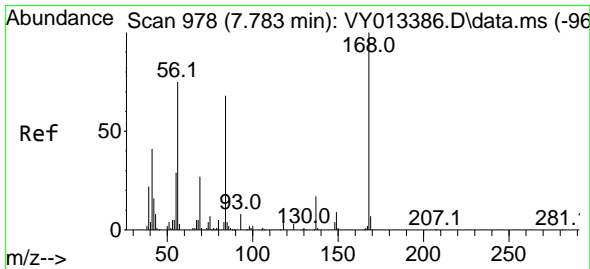
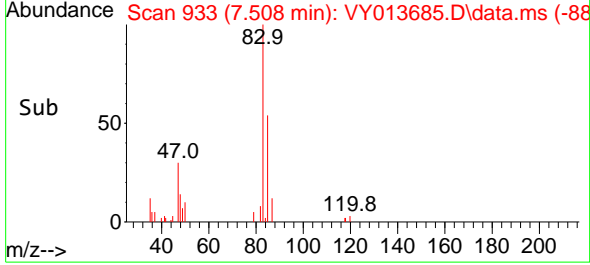
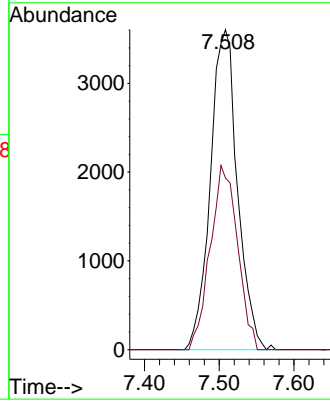
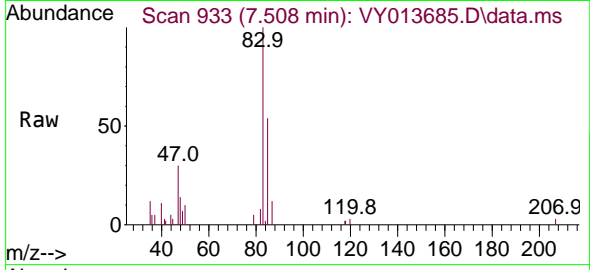




#30
 Chloroform
 Concen: 2.142 ug/l
 RT: 7.508 min Scan# 911
 Delta R.T. 0.006 min
 Lab File: VY013685.D
 Acq: 10 May 2023 14:10

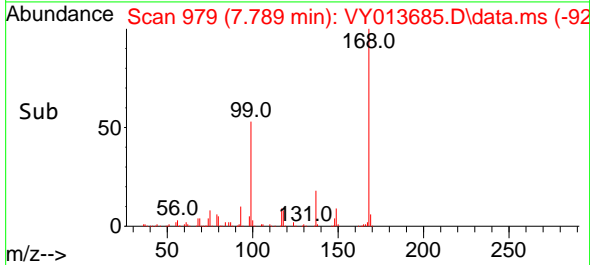
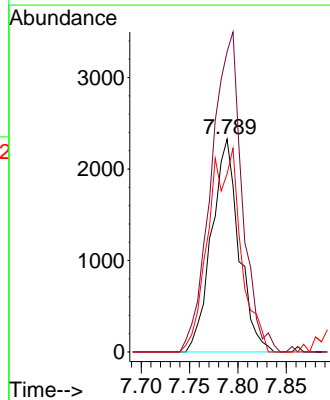
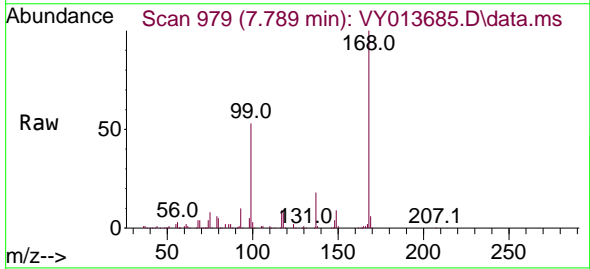
Instrument : MSVOA_Y
 ClientSampleId : CB-14-G1-SO-18.5-050923

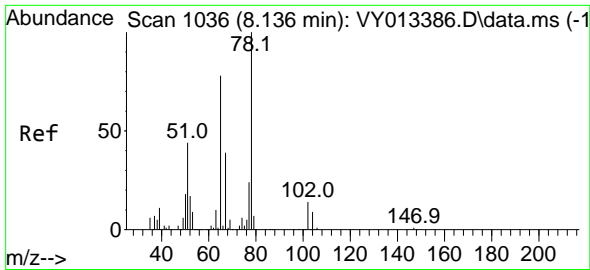
Tgt Ion: 83 Resp: 9095
 Ion Ratio Lower Upper
 83 100
 85 53.7 52.0 78.0



#31
 Cyclohexane
 Concen: 1.149 ug/l
 RT: 7.789 min Scan# 979
 Delta R.T. 0.006 min
 Lab File: VY013685.D
 Acq: 10 May 2023 14:10

Tgt Ion: 56 Resp: 4584
 Ion Ratio Lower Upper
 56 100
 69 141.0 29.2 43.8#
 84 83.7 73.0 109.6

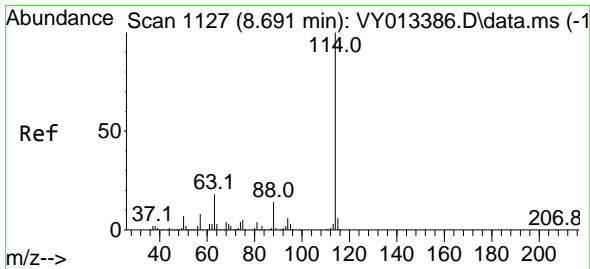
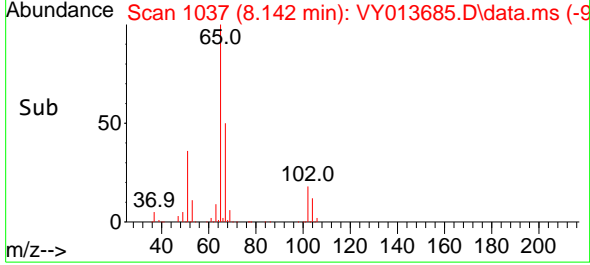
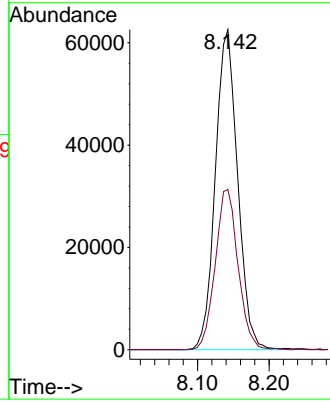
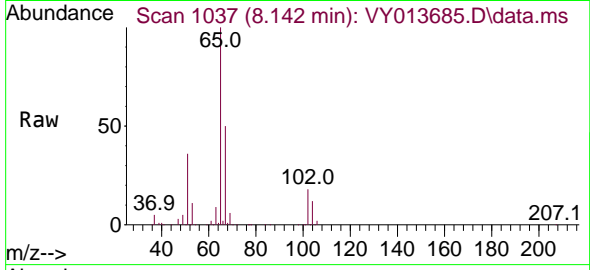




#33
 1,2-Dichloroethane-d4
 Concen: 60.668 ug/l
 RT: 8.142 min Scan# 1036
 Delta R.T. 0.006 min
 Lab File: VY013685.D
 Acq: 10 May 2023 14:10

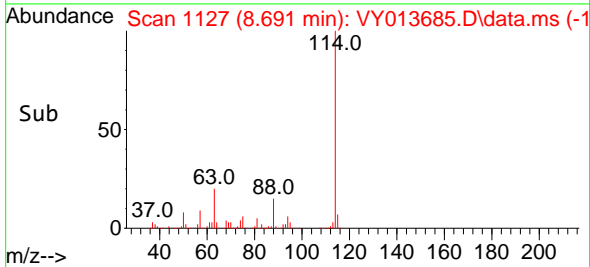
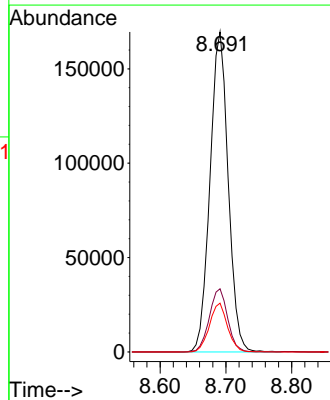
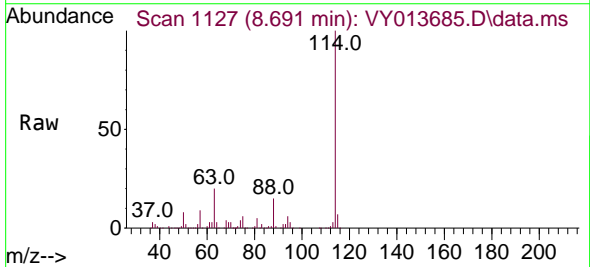
Instrument : MSVOA_Y
 ClientSampleId : CB-14-G1-SO-18.5-050923

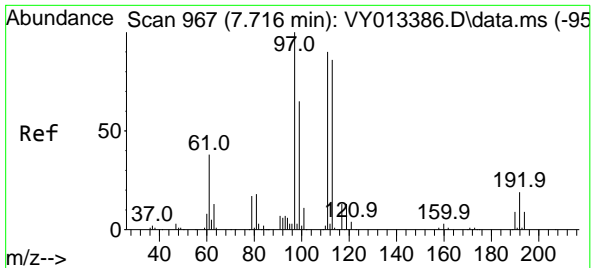
Tgt Ion: 65 Resp: 135215
 Ion Ratio Lower Upper
 65 100
 67 51.3 0.0 103.4



#34
 1,4-Difluorobenzene
 Concen: 50.000 ug/l
 RT: 8.691 min Scan# 1127
 Delta R.T. 0.000 min
 Lab File: VY013685.D
 Acq: 10 May 2023 14:10

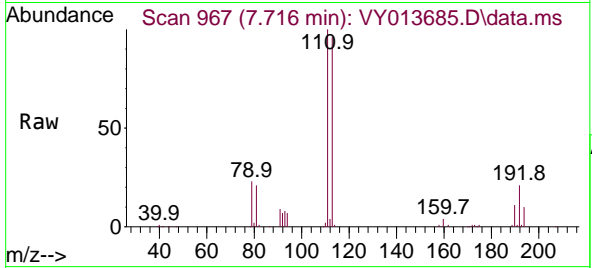
Tgt Ion:114 Resp: 326106
 Ion Ratio Lower Upper
 114 100
 63 19.8 0.0 36.6
 88 15.3 0.0 28.8





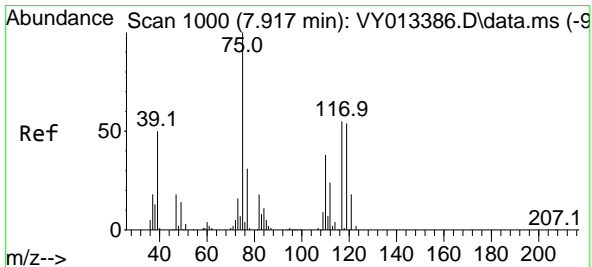
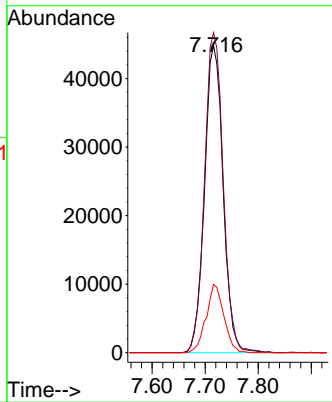
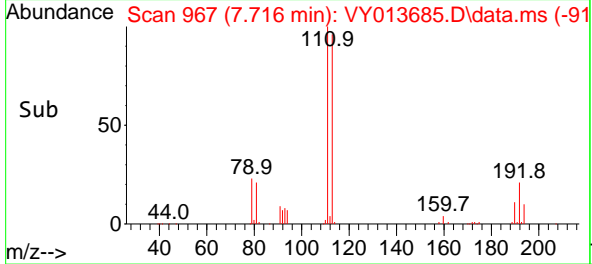
#35
 Dibromofluoromethane
 Concen: 53.119 ug/l
 RT: 7.716 min Scan# 909
 Delta R.T. -0.000 min
 Lab File: VY013685.D
 Acq: 10 May 2023 14:10

Instrument : MSVOA_Y
 ClientSampleId : CB-14-G1-SO-18.5-050923

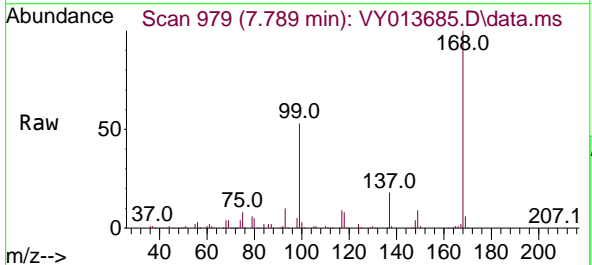


Tgt Ion:113 Resp: 108950

Ion	Ratio	Lower	Upper
113	100		
111	104.7	82.2	123.2
192	21.2	16.7	25.1

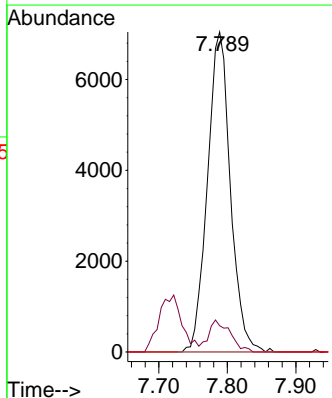
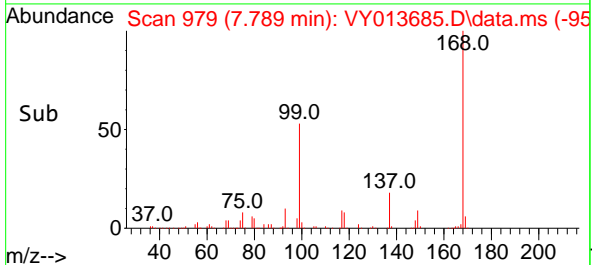


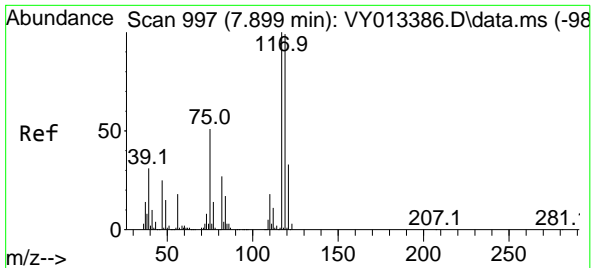
#36
 1,1-Dichloropropene
 Concen: 4.811 ug/l
 RT: 7.789 min Scan# 979
 Delta R.T. -0.128 min
 Lab File: VY013685.D
 Acq: 10 May 2023 14:10



Tgt Ion: 75 Resp: 16376

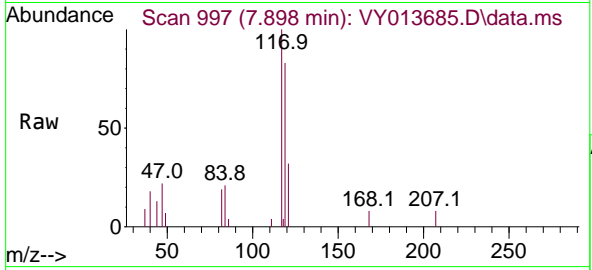
Ion	Ratio	Lower	Upper
75	100		
110	9.4	18.7	56.1#
77	0.0	24.6	37.0#





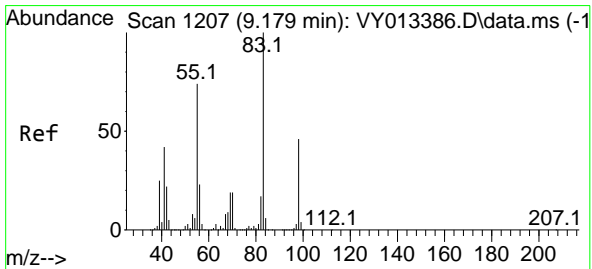
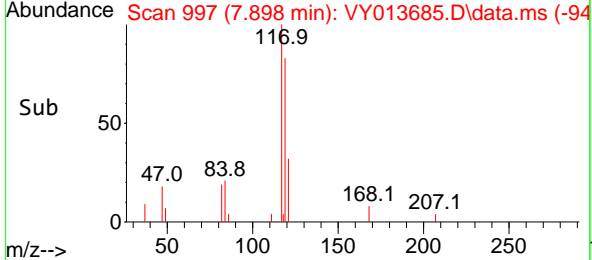
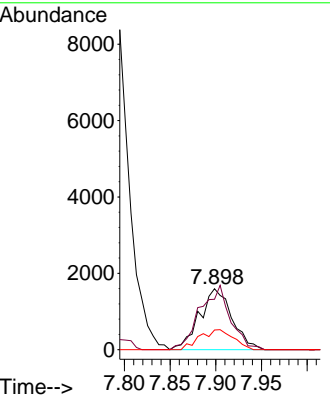
#38
 Carbon Tetrachloride
 Concen: 1.107 ug/l
 RT: 7.898 min Scan# 91
 Delta R.T. -0.001 min
 Lab File: VY013685.D
 Acq: 10 May 2023 14:10

Instrument : MSVOA_Y
 ClientSampleId : CB-14-G1-SO-18.5-050923

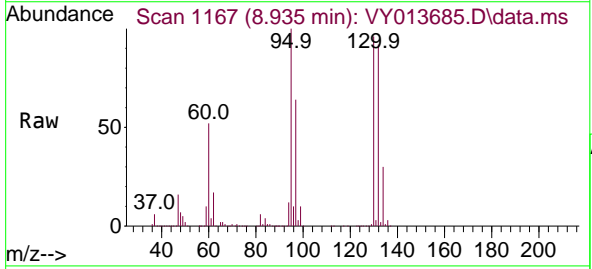


Tgt Ion: 117 Resp: 3950

Ion	Ratio	Lower	Upper
117	100		
119	82.6	79.0	118.6
121	32.3	26.6	40.0

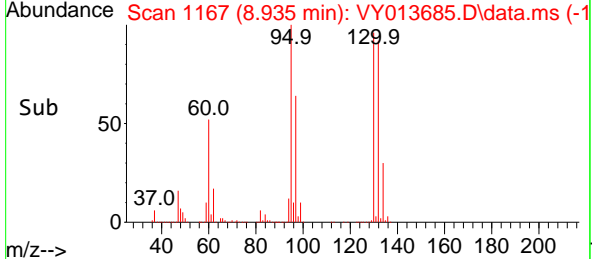
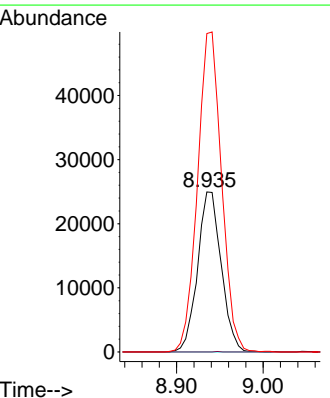


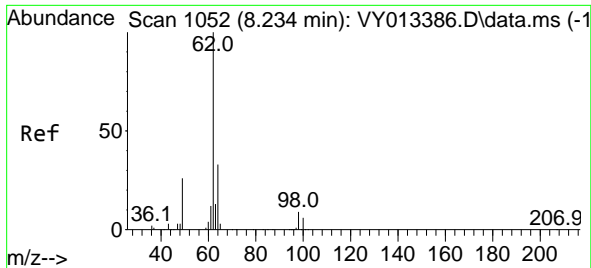
#39
 Methylcyclohexane
 Concen: 11.799 ug/l
 RT: 8.935 min Scan# 1167
 Delta R.T. -0.244 min
 Lab File: VY013685.D
 Acq: 10 May 2023 14:10



Tgt Ion: 83 Resp: 47351

Ion	Ratio	Lower	Upper
83	100		
55	0.0	59.0	88.4#
98	198.7	37.0	55.4#

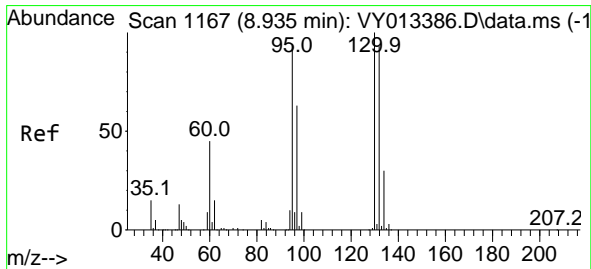
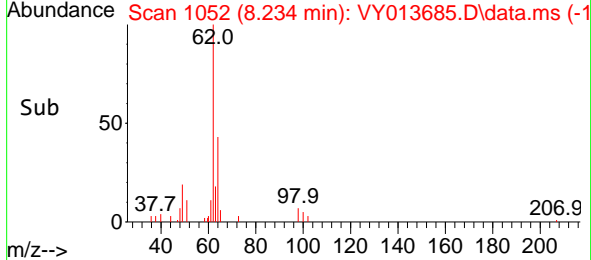
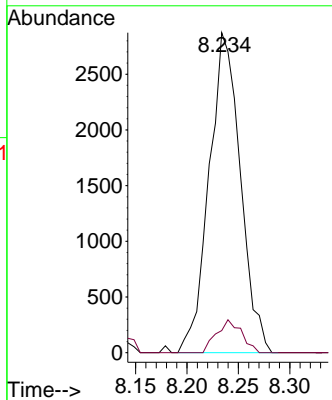
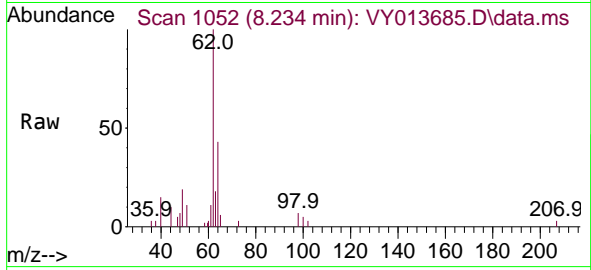




#42
 1,2-Dichloroethane
 Concen: 1.942 ug/l
 RT: 8.234 min Scan# 1052
 Delta R.T. -0.000 min
 Lab File: VY013685.D
 Acq: 10 May 2023 14:10

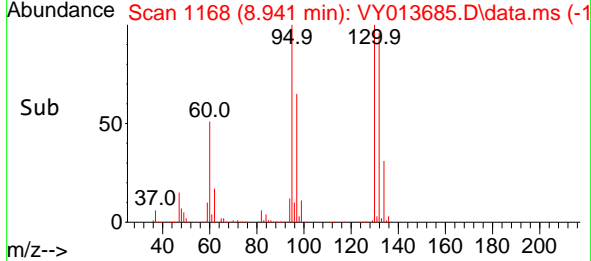
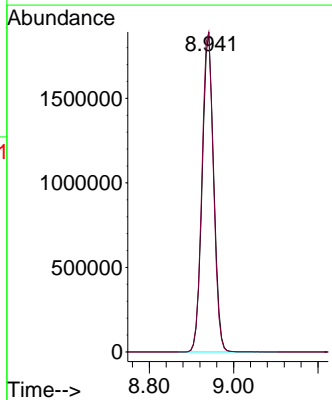
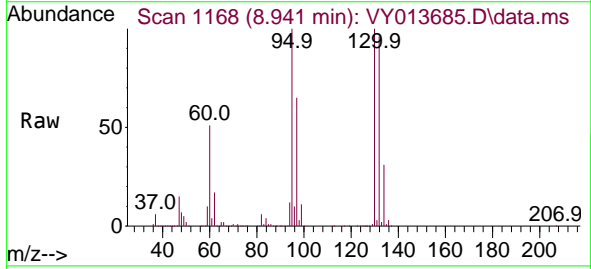
Instrument : MSVOA_Y
 ClientSampleId : CB-14-G1-SO-18.5-050923

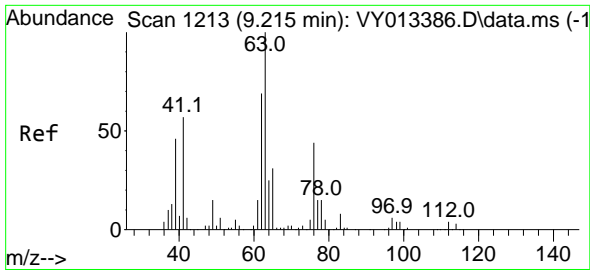
Tgt Ion	Resp	Ion Ratio	Lower	Upper
62	6089	100		
98		8.2	0.0	17.8



#44
 Trichloroethene
 Concen: 1406.401 ug/l
 RT: 8.941 min Scan# 1168
 Delta R.T. 0.006 min
 Lab File: VY013685.D
 Acq: 10 May 2023 14:10

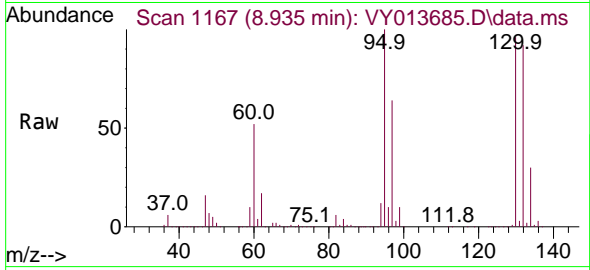
Tgt Ion	Resp	Ion Ratio	Lower	Upper
130	3587158	100		
95		99.9	0.0	188.8



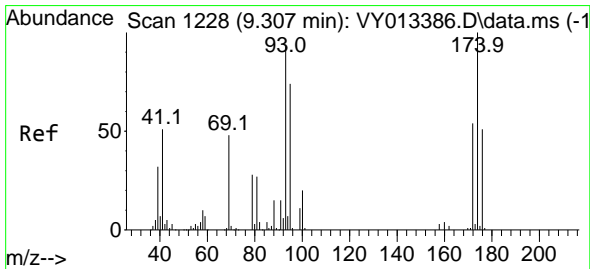
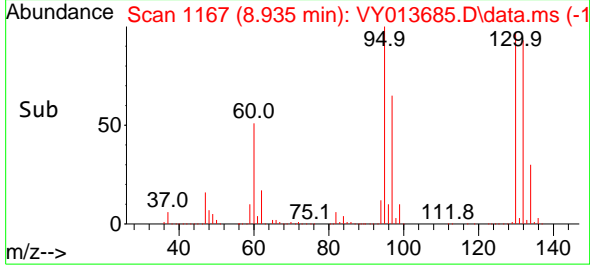
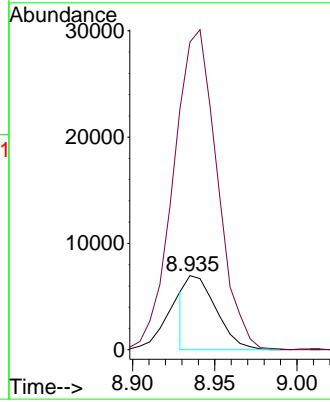


#45
 1,2-Dichloropropane
 Concen: 3.518 ug/l
 RT: 8.935 min Scan# 1167
 Delta R.T. -0.280 min
 Lab File: VY013685.D
 Acq: 10 May 2023 14:10

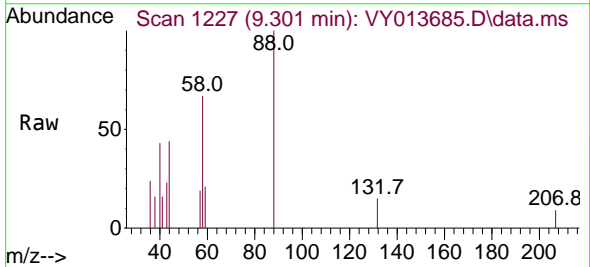
Instrument : MSVOA_Y
 ClientSampleId : CB-14-G1-SO-18.5-050923



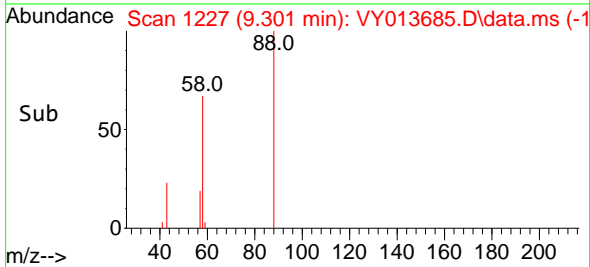
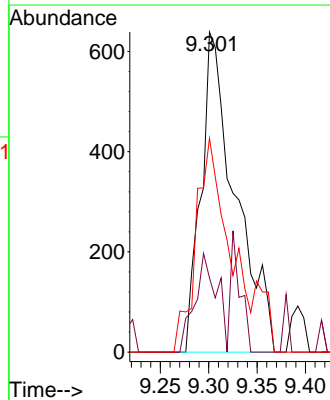
Tgt Ion: 63 Resp: 8819
 Ion Ratio Lower Upper
 63 100
 65 414.0 24.6 37.0#

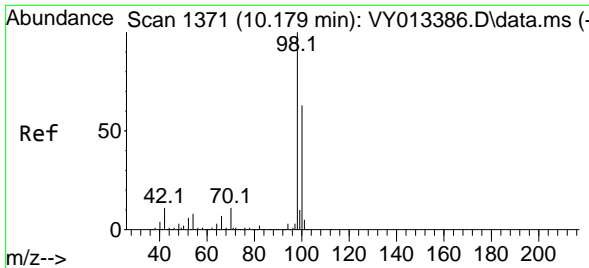


#49
 1,4-Dioxane
 Concen: 73.467 ug/l
 RT: 9.301 min Scan# 1227
 Delta R.T. -0.006 min
 Lab File: VY013685.D
 Acq: 10 May 2023 14:10



Tgt Ion: 88 Resp: 1574
 Ion Ratio Lower Upper
 88 100
 43 19.9 16.8 25.2
 58 63.8 54.3 81.5

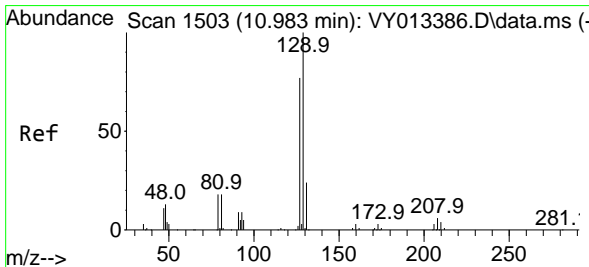
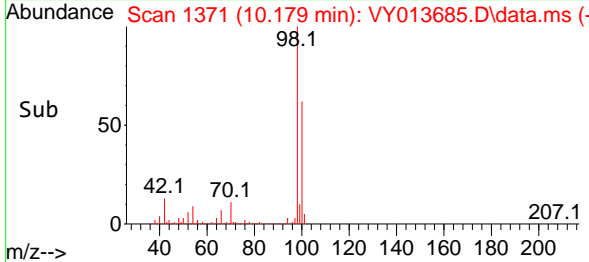
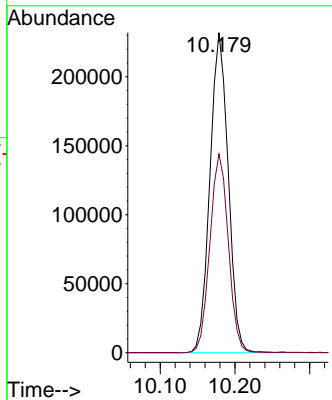
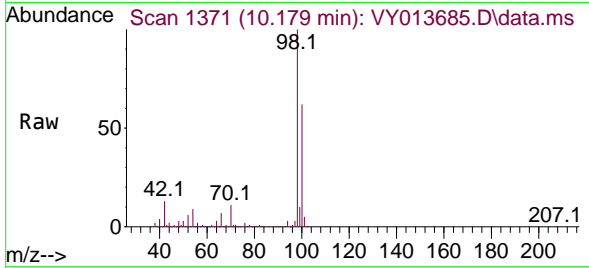




#50
 Toluene-d8
 Concen: 54.089 ug/l
 RT: 10.179 min Scan# 11
 Delta R.T. -0.000 min
 Lab File: VY013685.D
 Acq: 10 May 2023 14:10

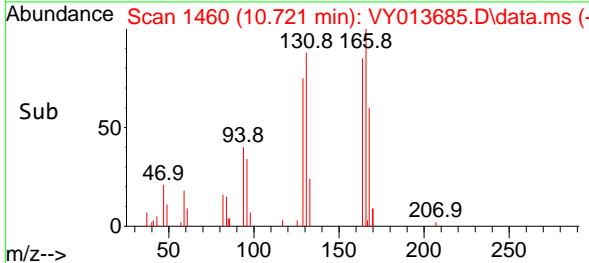
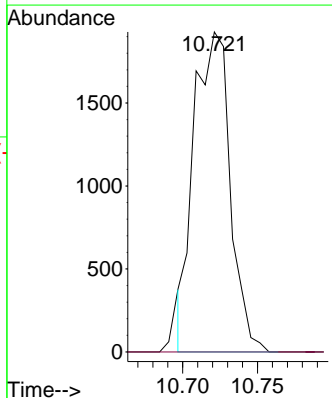
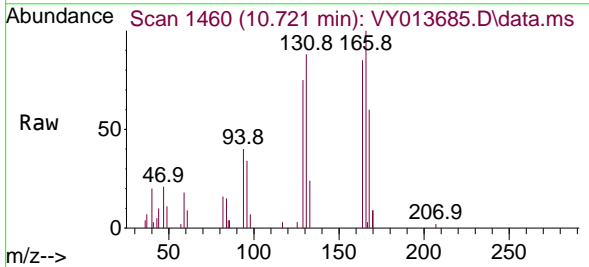
Instrument : MSVOA_Y
 ClientSampleId : CB-14-G1-SO-18.5-050923

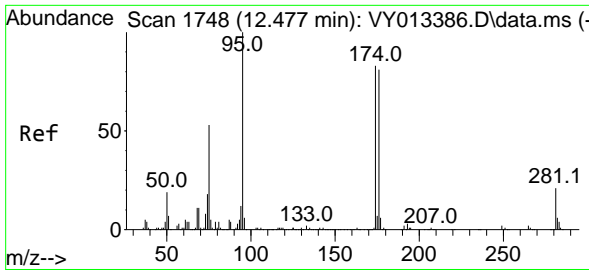
Tgt Ion: 98 Resp: 394661
 Ion Ratio Lower Upper
 98 100
 100 62.5 50.5 75.7



#60
 Dibromochloromethane
 Concen: 1.344 ug/l
 RT: 10.721 min Scan# 1460
 Delta R.T. -0.262 min
 Lab File: VY013685.D
 Acq: 10 May 2023 14:10

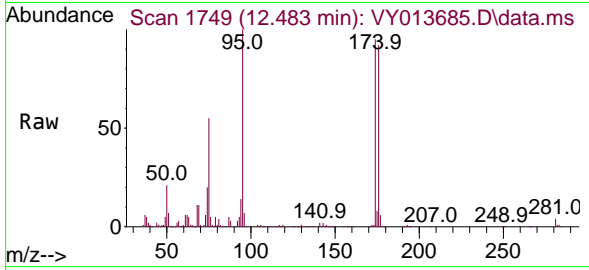
Tgt Ion: 129 Resp: 3243
 Ion Ratio Lower Upper
 129 100
 127 0.0 38.7 116.1#



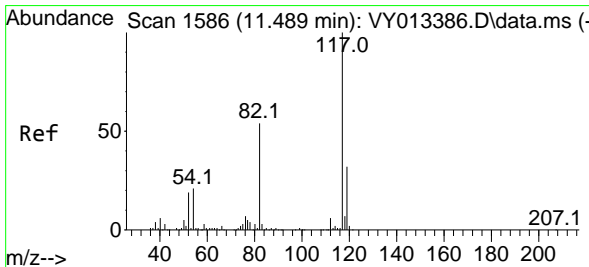
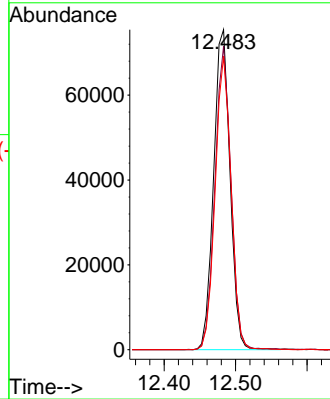
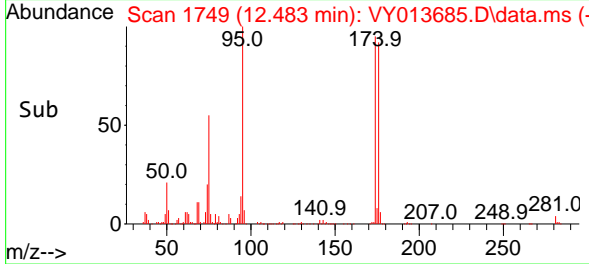


#62
 4-Bromofluorobenzene
 Concen: 48.775 ug/l
 RT: 12.483 min Scan# 1749
 Delta R.T. 0.006 min
 Lab File: VY013685.D
 Acq: 10 May 2023 14:10

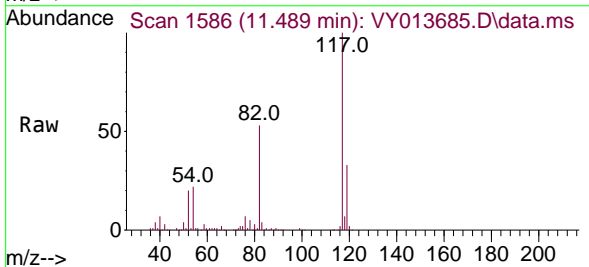
Instrument : MSVOA_Y
 ClientSampleId : CB-14-G1-SO-18.5-050923



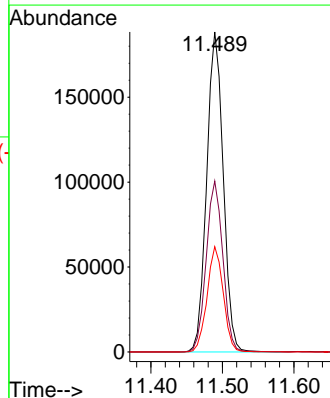
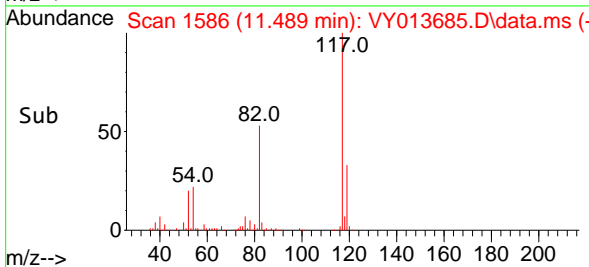
Tgt Ion: 95 Resp: 119977
 Ion Ratio Lower Upper
 95 100
 174 93.2 0.0 182.0
 176 89.4 0.0 175.4

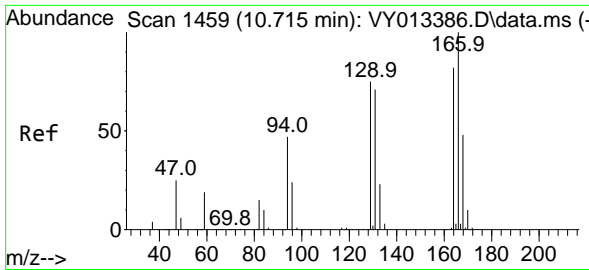


#63
 Chlorobenzene-d5
 Concen: 50.000 ug/l
 RT: 11.489 min Scan# 1586
 Delta R.T. 0.000 min
 Lab File: VY013685.D
 Acq: 10 May 2023 14:10



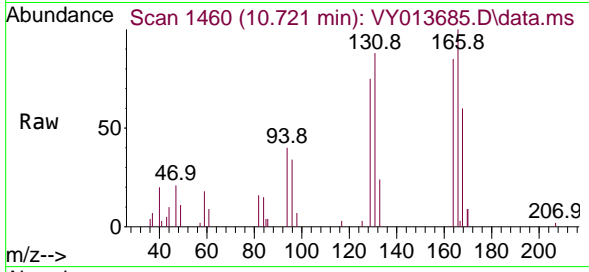
Tgt Ion: 117 Resp: 302979
 Ion Ratio Lower Upper
 117 100
 82 53.4 43.0 64.6
 119 32.9 25.5 38.3



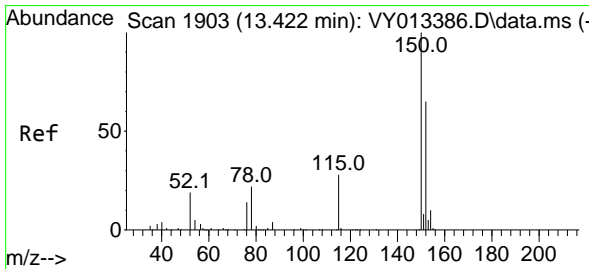
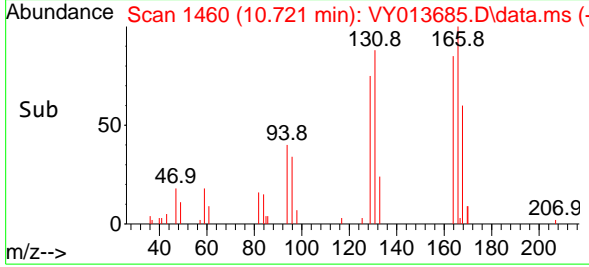
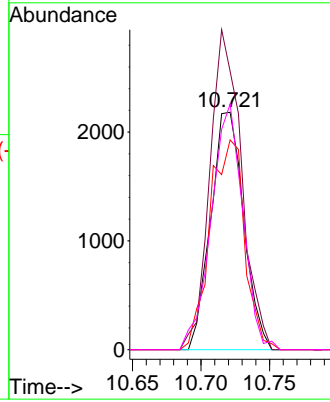


#64
 Tetrachloroethene
 Concen: 1.584 ug/l
 RT: 10.721 min Scan# 1459
 Delta R.T. 0.006 min
 Lab File: VY013685.D
 Acq: 10 May 2023 14:10

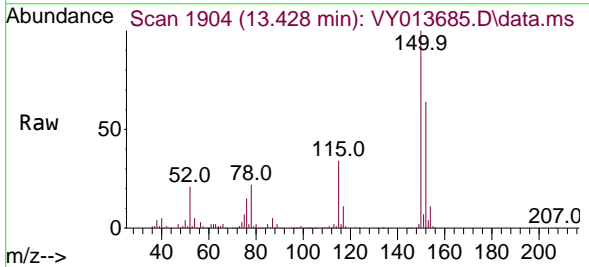
Instrument : MSVOA_Y
 ClientSampleId : CB-14-G1-SO-18.5-050923



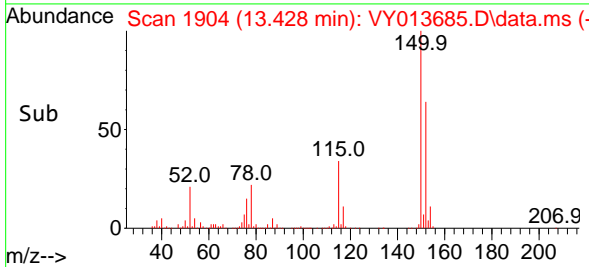
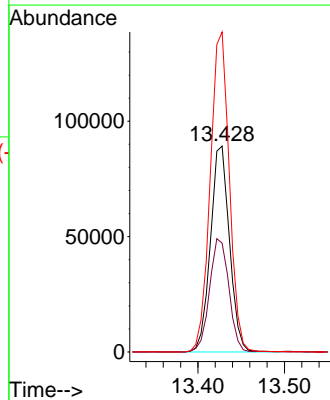
Tgt Ion:164 Resp: 3650
 Ion Ratio Lower Upper
 164 100
 166 117.3 97.5 146.3
 129 88.3 72.6 109.0
 131 103.4 69.8 104.6

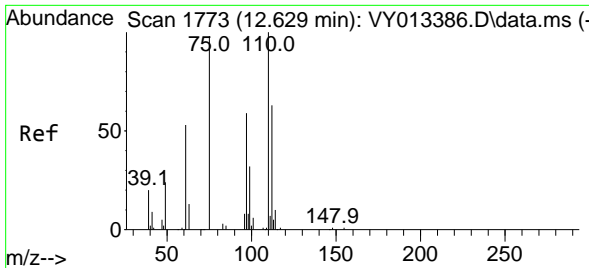


#72
 1,4-Dichlorobenzene-d4
 Concen: 50.000 ug/l
 RT: 13.428 min Scan# 1904
 Delta R.T. 0.006 min
 Lab File: VY013685.D
 Acq: 10 May 2023 14:10



Tgt Ion:152 Resp: 136325
 Ion Ratio Lower Upper
 152 100
 115 56.0 28.1 84.2
 150 155.7 0.0 352.0

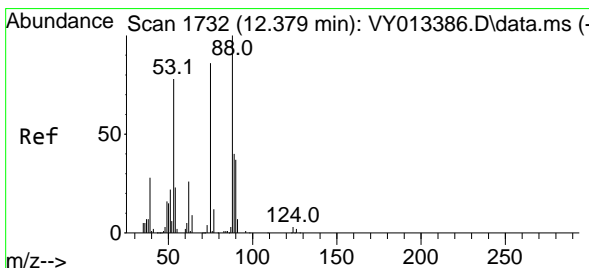
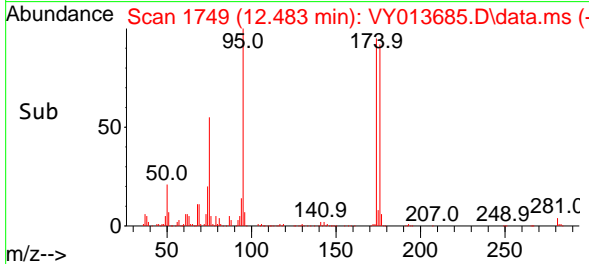
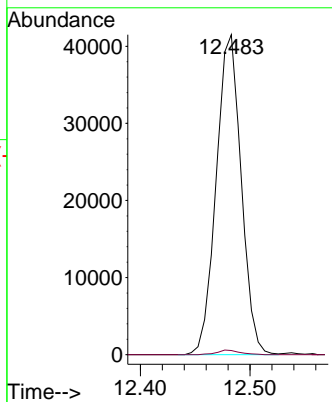
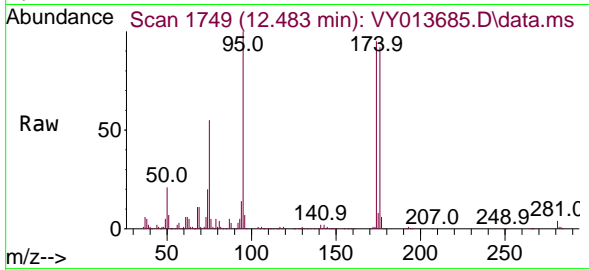




#76
 1,2,3-Trichloropropane
 Concen: 35.767 ug/l
 RT: 12.483 min Scan# 1749
 Delta R.T. -0.146 min
 Lab File: VY013685.D
 Acq: 10 May 2023 14:10

Instrument : MSVOA_Y
 ClientSampleId : CB-14-G1-SO-18.5-050923

Tgt Ion: 75 Resp: 65758
 Ion Ratio Lower Upper
 75 100
 77 1.3 0.0 0.0#



#81
 trans-1,4-Dichloro-2-butene
 Concen: 73.163 ug/l
 RT: 12.483 min Scan# 1749
 Delta R.T. 0.104 min
 Lab File: VY013685.D
 Acq: 10 May 2023 14:10

Tgt Ion: 75 Resp: 65758
 Ion Ratio Lower Upper
 75 100
 53 0.1 73.2 109.8#
 89 0.1 38.0 57.0#

