

Data Path : Z:\voasrv\HPCHEM1\MSVOA_Y\Data\VY051023\
 Data File : VY013694.D
 Acq On : 10 May 2023 17:40
 Operator : KP/MD
 Sample : 02719-04
 Misc : 6.25g/5.0mL/MSVOA_Y/SOIL
 ALS Vial : 19 Sample Multiplier: 1

Instrument :
 MSVOA_Y
ClientSampleId :
 SB-04_10-12_20230509

Quant Time: May 11 03:31:00 2023
 Quant Method : Z:\voasrv\HPCHEM1\MSVOA_Y\methods\82Y042423S.M
 Quant Title : SW846 8260
 QLast Update : Tue Apr 25 02:39:58 2023
 Response via : Initial Calibration

Manual Integrations
APPROVED
 Reviewed By :Krupa Patel 05/11/2023
 Supervised By :Mahesh Dadoda 05/11/2023

Compound	R.T.	QIon	Response	Conc	Units	Dev(Min)
Internal Standards						
1) Pentafluorobenzene	7.789	168	4147	50.000	ug/l	0.00
34) 1,4-Difluorobenzene	8.691	114	6361	50.000	ug/l	0.00
63) Chlorobenzene-d5	11.489	117	6043	50.000	ug/l	0.00
72) 1,4-Dichlorobenzene-d4	13.434	152	1850	50.000	ug/l	0.01
System Monitoring Compounds						
33) 1,2-Dichloroethane-d4	8.142	65	3567	78.464	ug/l	0.00
Spiked Amount	50.000	Range 50 - 163	Recovery	=	156.920%	
35) Dibromofluoromethane	7.722	113	2628	65.687	ug/l	0.00
Spiked Amount	50.000	Range 54 - 147	Recovery	=	131.380%	
50) Toluene-d8	10.185	98	8292	58.261	ug/l	0.00
Spiked Amount	50.000	Range 58 - 134	Recovery	=	116.520%	
62) 4-Bromofluorobenzene	12.483	95	2010	41.892	ug/l	0.00
Spiked Amount	50.000	Range 30 - 143	Recovery	=	83.780%	
Target Compounds						Qvalue
44) Trichloroethene	8.941	130	1596m	32.079	ug/l	

(#) = qualifier out of range (m) = manual integration (+) = signals summed

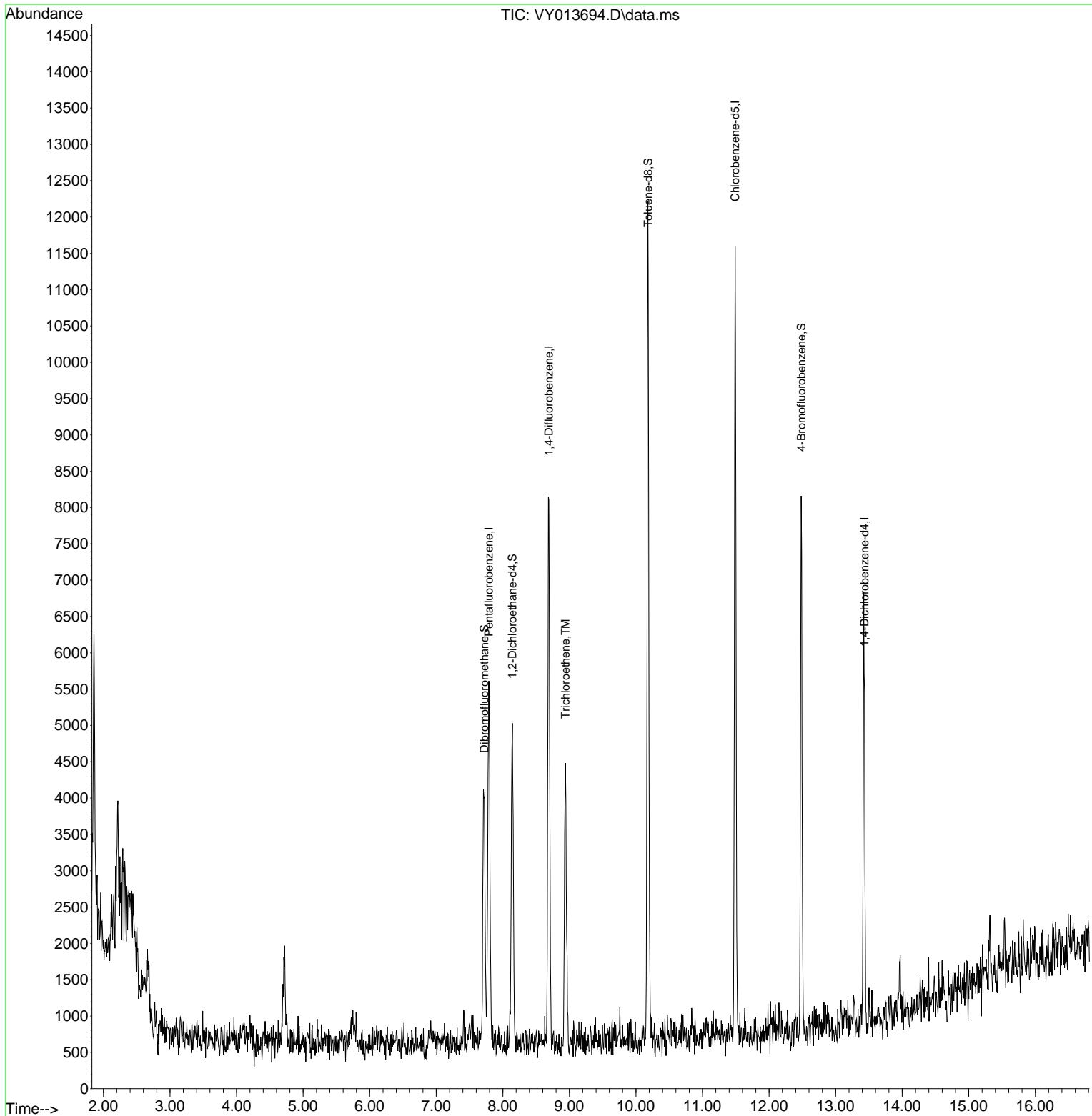
Data Path : Z:\voasrv\HPCHEM1\MSVOA_Y\Data\VY051023\
 Data File : VY013694.D
 Acq On : 10 May 2023 17:40
 Operator : KP/MD
 Sample : 02719-04
 Misc : 6.25g/5.0mL/MSVOA_Y/SOIL
 ALS Vial : 19 Sample Multiplier: 1

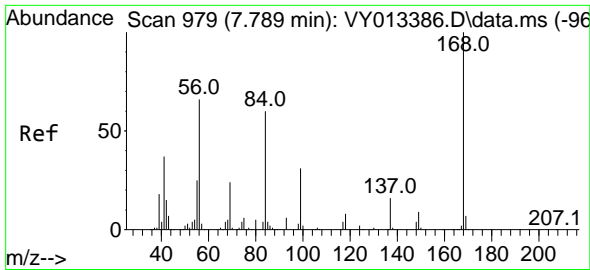
Instrument :
 MSVOA_Y
ClientSampleId :
 SB-04_10-12_20230509

Quant Time: May 11 03:31:00 2023
 Quant Method : Z:\voasrv\HPCHEM1\MSVOA_Y\methods\82Y042423S.M
 Quant Title : SW846 8260
 QLast Update : Tue Apr 25 02:39:58 2023
 Response via : Initial Calibration

Manual Integrations
APPROVED

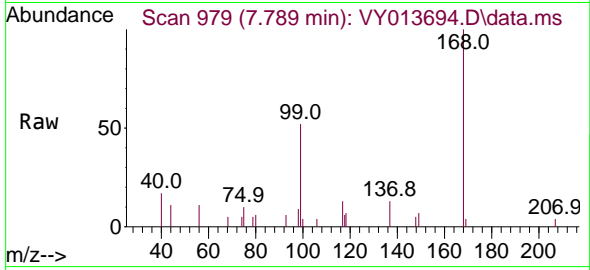
Reviewed By :Krupa Patel 05/11/2023
 Supervised By :Mahesh Dadoda 05/11/2023





#1
 Pentafluorobenzene
 Concen: 50.000 ug/l
 RT: 7.789 min Scan# 91
 Delta R.T. -0.000 min
 Lab File: VY013694.D
 Acq: 10 May 2023 17:40

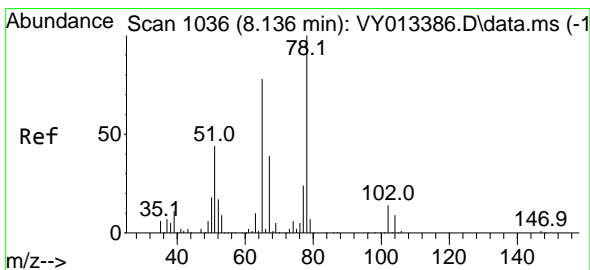
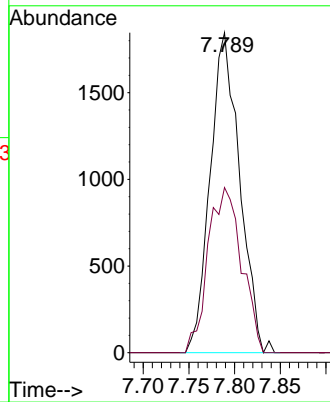
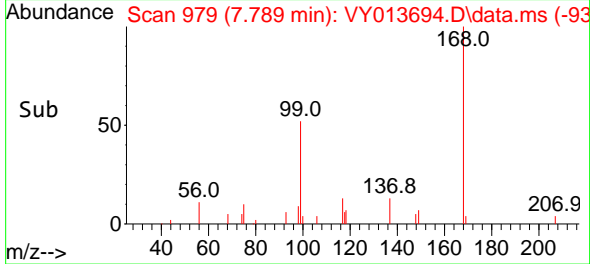
Instrument : MSVOA_Y
 ClientSampleId : SB-04_10-12_20230509



Tgt Ion:168 Resp: 414
 Ion Ratio Lower Upper
 168 100
 99 51.6 41.8 62.6

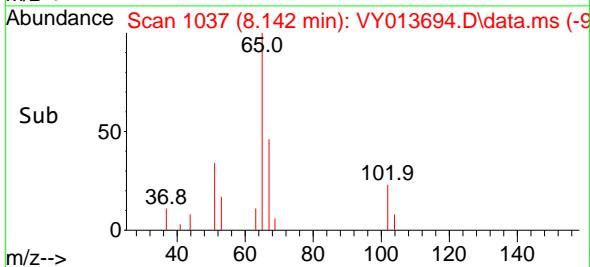
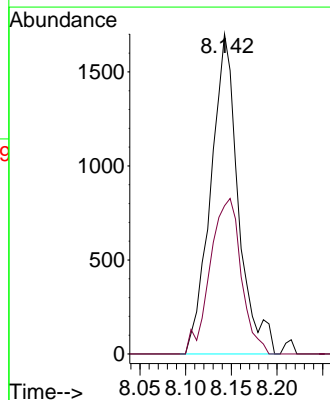
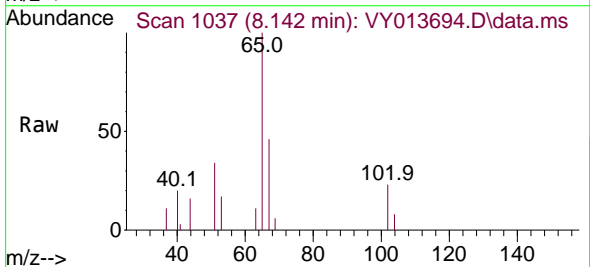
Manual Integrations
APPROVED

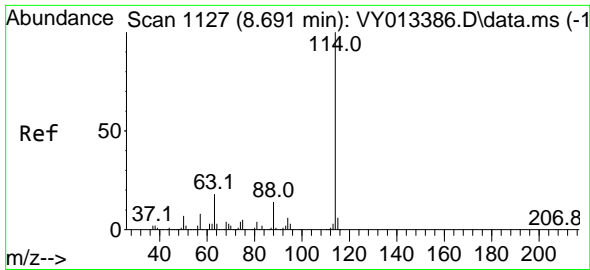
Reviewed By :Krupa Patel 05/11/2023
 Supervised By :Mahesh Dadoda 05/11/2023



#33
 1,2-Dichloroethane-d4
 Concen: 78.464 ug/l
 RT: 8.142 min Scan# 1037
 Delta R.T. 0.006 min
 Lab File: VY013694.D
 Acq: 10 May 2023 17:40

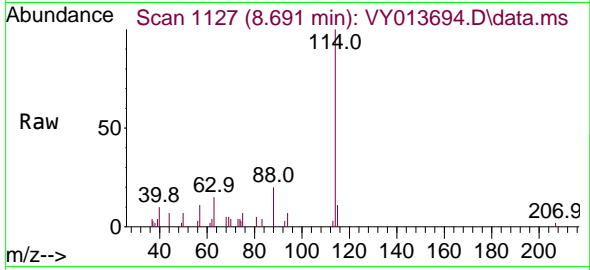
Tgt Ion: 65 Resp: 3567
 Ion Ratio Lower Upper
 65 100
 67 54.7 0.0 103.4





#34
 1,4-Difluorobenzene
 Concen: 50.000 ug/l
 RT: 8.691 min Scan# 1127
 Delta R.T. 0.000 min
 Lab File: VY013694.D
 Acq: 10 May 2023 17:40

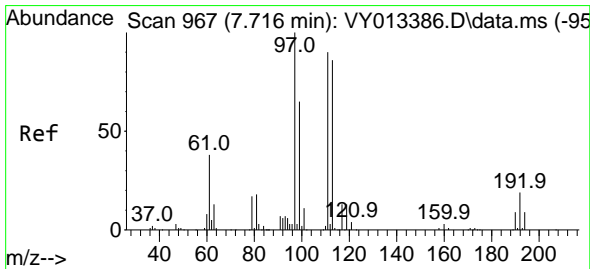
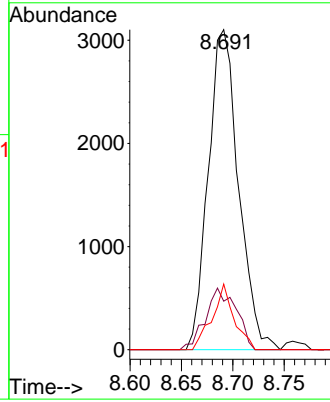
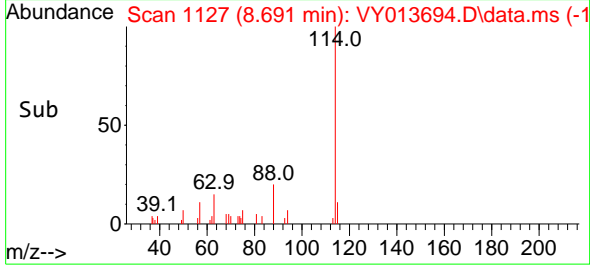
Instrument : MSVOA_Y
 ClientSampleId : SB-04_10-12_20230509



Tgt Ion:114 Resp: 636
 Ion Ratio Lower Upper
 114 100
 63 15.2 0.0 36.6
 88 20.5 0.0 28.8

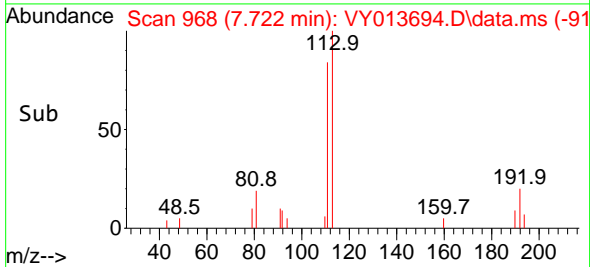
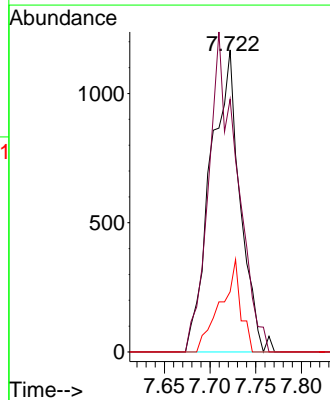
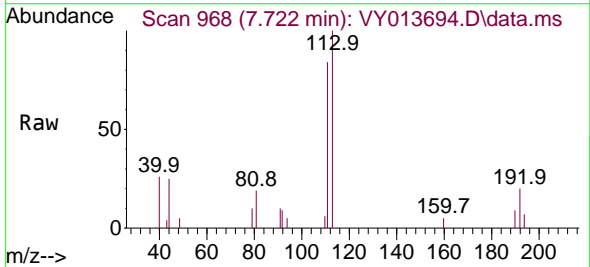
Manual Integrations
APPROVED

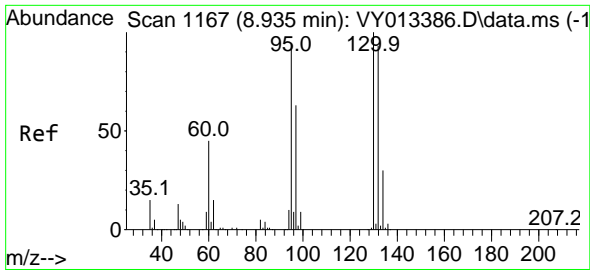
Reviewed By :Krupa Patel 05/11/2023
 Supervised By :Mahesh Dadoda 05/11/2023



#35
 Dibromofluoromethane
 Concen: 65.687 ug/l
 RT: 7.722 min Scan# 968
 Delta R.T. 0.006 min
 Lab File: VY013694.D
 Acq: 10 May 2023 17:40

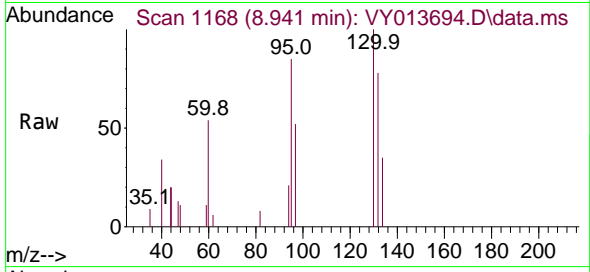
Tgt Ion:113 Resp: 2628
 Ion Ratio Lower Upper
 113 100
 111 102.1 82.2 123.2
 192 20.9 16.7 25.1





#44
 Trichloroethene
 Concen: 32.079 ug/l m
 RT: 8.941 min Scan# 1167
 Delta R.T. 0.006 min
 Lab File: VY013694.D
 Acq: 10 May 2023 17:40

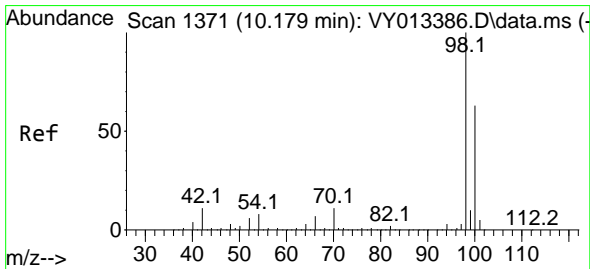
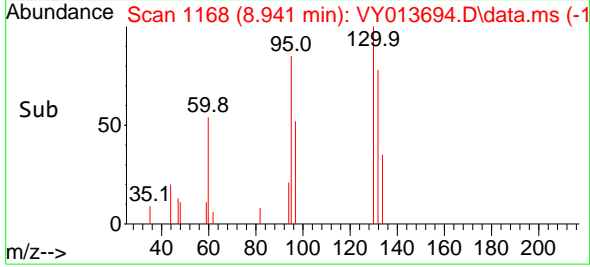
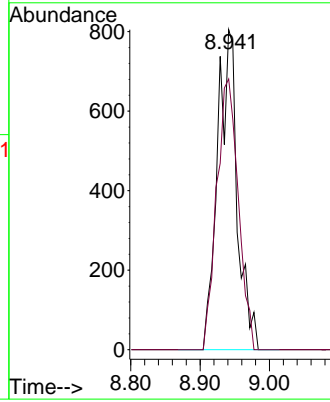
Instrument : MSVOA_Y
 ClientSampleId : SB-04_10-12_20230509



Tgt Ion:130 Resp: 1590
 Ion Ratio Lower Upper
 130 100
 95 84.6 0.0 188.8

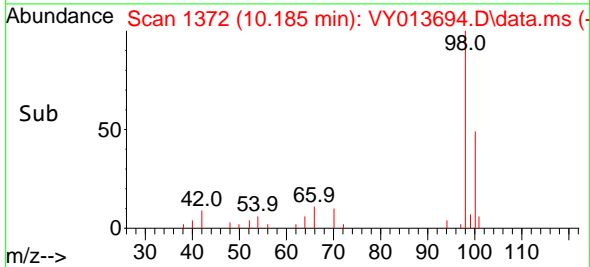
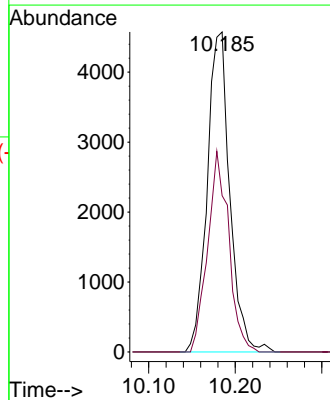
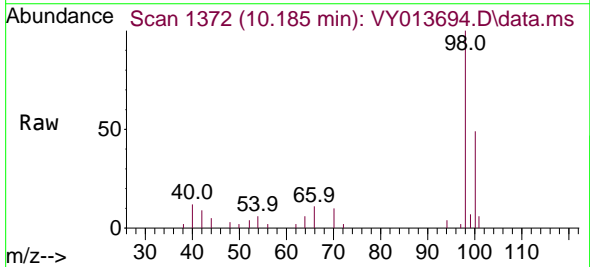
Manual Integrations
APPROVED

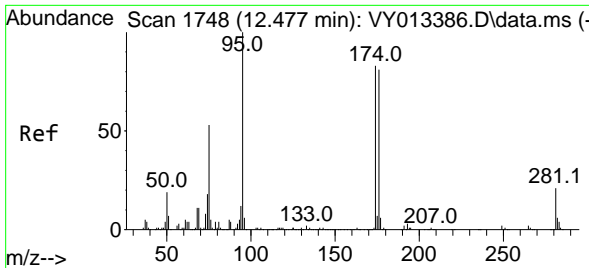
Reviewed By :Krupa Patel 05/11/2023
 Supervised By :Mahesh Dadoda 05/11/2023



#50
 Toluene-d8
 Concen: 58.261 ug/l
 RT: 10.185 min Scan# 1372
 Delta R.T. 0.006 min
 Lab File: VY013694.D
 Acq: 10 May 2023 17:40

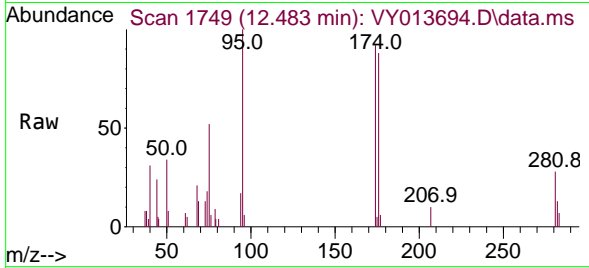
Tgt Ion: 98 Resp: 8292
 Ion Ratio Lower Upper
 98 100
 100 58.5 50.5 75.7





#62
 4-Bromofluorobenzene
 Concen: 41.892 ug/l
 RT: 12.483 min Scan# 1749
 Delta R.T. 0.006 min
 Lab File: VY013694.D
 Acq: 10 May 2023 17:40

Instrument : MSVOA_Y
 ClientSampleId : SB-04_10-12_20230509

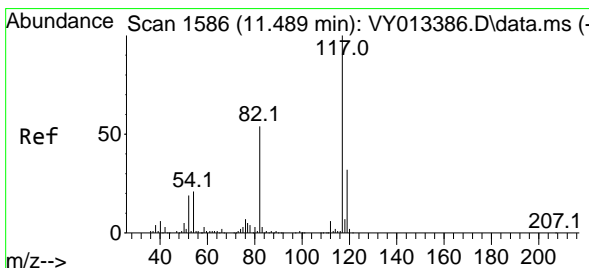
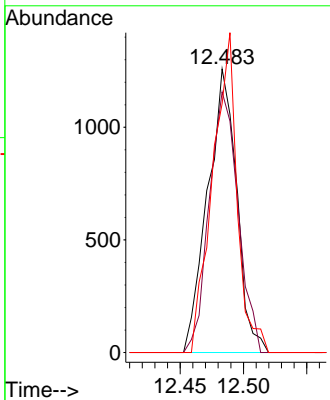
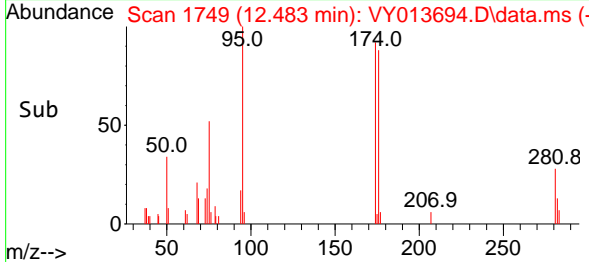


Tgt Ion: 95 Resp: 2010

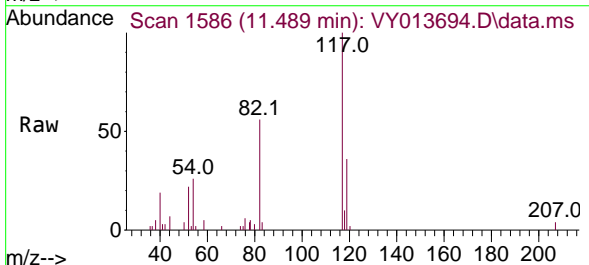
Ion	Ratio	Lower	Upper
95	100		
174	91.3	0.0	182.0
176	95.2	0.0	175.4

Manual Integrations
APPROVED

Reviewed By :Krupa Patel 05/11/2023
 Supervised By :Mahesh Dadoda 05/11/2023

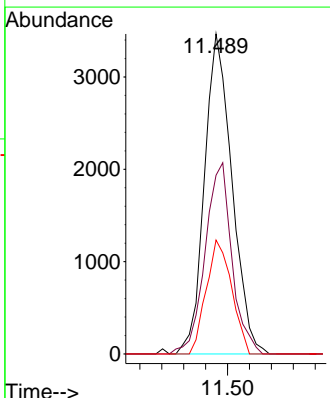
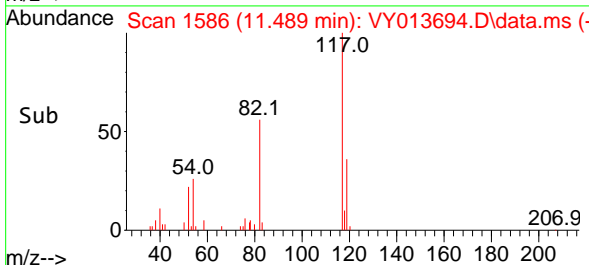


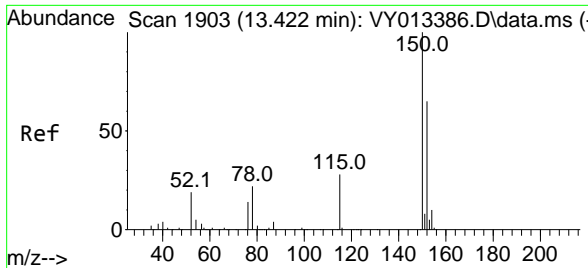
#63
 Chlorobenzene-d5
 Concen: 50.000 ug/l
 RT: 11.489 min Scan# 1586
 Delta R.T. 0.000 min
 Lab File: VY013694.D
 Acq: 10 May 2023 17:40



Tgt Ion:117 Resp: 6043

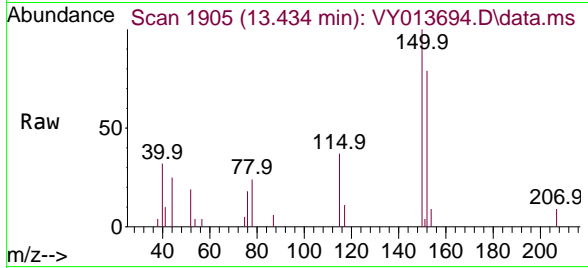
Ion	Ratio	Lower	Upper
117	100		
82	55.8	43.0	64.6
119	35.6	25.5	38.3





#72
 1,4-Dichlorobenzene-d4
 Concen: 50.000 ug/l
 RT: 13.434 min Scan# 1905
 Delta R.T. 0.012 min
 Lab File: VY013694.D
 Acq: 10 May 2023 17:40

Instrument : MSVOA_Y
 ClientSampleId : SB-04_10-12_20230509



Tgt Ion:152 Resp: 1850

Ion	Ratio	Lower	Upper
152	100		
115	60.2	28.1	84.2
150	141.6	0.0	352.0

Manual Integrations
 APPROVED

Reviewed By :Krupa Patel 05/11/2023
 Supervised By :Mahesh Dadoda 05/11/2023

