

Data Path : Z:\voasrv\HPCHEM1\MSVOA\_Y\Data\VY051823\  
 Data File : VY013809.D  
 Acq On : 18 May 2023 18:50  
 Operator : KP/MD  
 Sample : 02832-03  
 Misc : 5.20g/5.0mL/MSVOA\_Y/SOIL  
 ALS Vial : 21 Sample Multiplier: 1

Instrument :  
 MSVOA\_Y  
 ClientSampleId :  
 CB-22-K2-SO-74.5-051723

Quant Time: May 19 03:23:32 2023  
 Quant Method : Z:\voasrv\HPCHEM1\MSVOA\_Y\methods\82Y051723S.M  
 Quant Title : SW846 8260  
 QLast Update : Thu May 18 06:54:18 2023  
 Response via : Initial Calibration

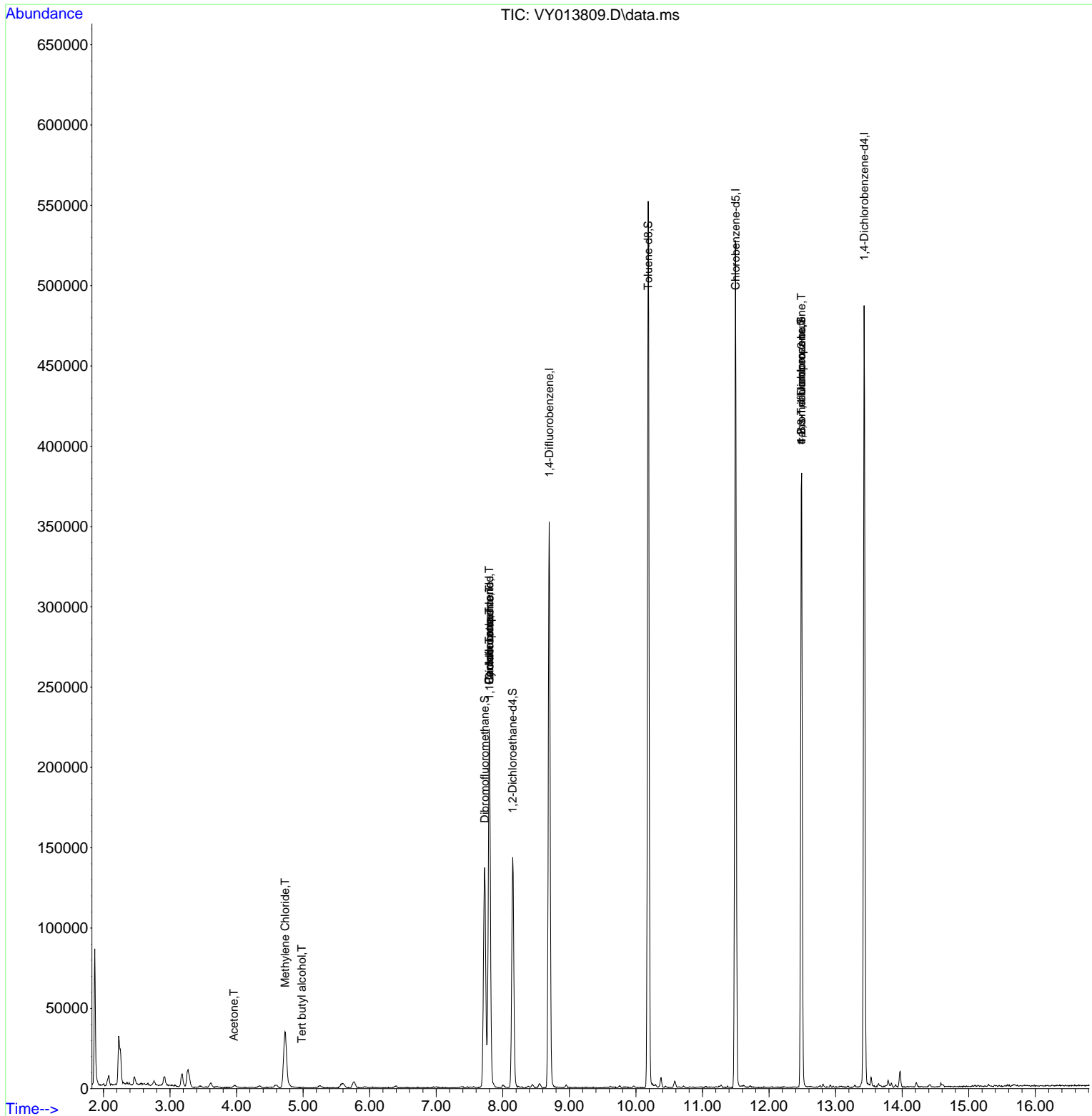
Compound	R.T.	QIon	Response	Conc	Units	Dev(Min)
-----						
Internal Standards						
1) Pentafluorobenzene	7.795	168	171027	50.000	ug/l	0.00
34) 1,4-Difluorobenzene	8.697	114	286473	50.000	ug/l	0.00
63) Chlorobenzene-d5	11.496	117	273482	50.000	ug/l	0.00
72) 1,4-Dichlorobenzene-d4	13.428	152	122967	50.000	ug/l	0.00
System Monitoring Compounds						
33) 1,2-Dichloroethane-d4	8.149	65	114987	57.877	ug/l	0.00
Spiked Amount	50.000	Range	50 - 163	Recovery	=	115.760%
35) Dibromofluoromethane	7.728	113	94077	51.211	ug/l	0.00
Spiked Amount	50.000	Range	54 - 147	Recovery	=	102.420%
50) Toluene-d8	10.185	98	350653	50.349	ug/l	0.00
Spiked Amount	50.000	Range	58 - 134	Recovery	=	100.700%
62) 4-Bromofluorobenzene	12.483	95	110540	47.785	ug/l	0.00
Spiked Amount	50.000	Range	30 - 143	Recovery	=	95.580%
Target Compounds						
					Qvalue	
11) Tert butyl alcohol	4.979	59	181	1.125	ug/l #	73
16) Acetone	3.960	43	2574	4.294	ug/l #	84
20) Methylene Chloride	4.729	84	25672	9.198	ug/l	97
31) Cyclohexane	7.795	56	4108	1.442	ug/l #	1
36) 1,1-Dichloropropene	7.801	75	12845	5.061	ug/l #	50
38) Carbon Tetrachloride	7.795	117	16571	6.189	ug/l #	15
76) 1,2,3-Trichloropropane	12.483	75	61110	41.062	ug/l #	100
81) trans-1,4-Dichloro-2-b...	12.483	75	61110	91.420	ug/l #	12
-----						

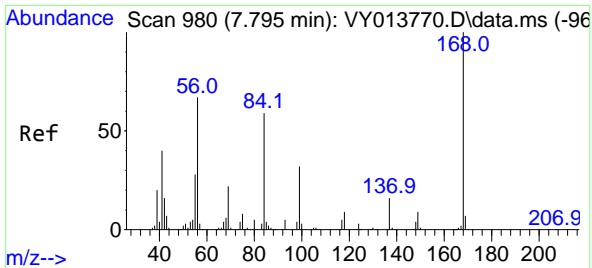
(#) = qualifier out of range (m) = manual integration (+) = signals summed

Data Path : Z:\voasrv\HPCHEM1\MSVOA\_Y\Data\VY051823\  
 Data File : VY013809.D  
 Acq On : 18 May 2023 18:50  
 Operator : KP/MD  
 Sample : 02832-03  
 Misc : 5.20g/5.0mL/MSVOA\_Y/SOIL  
 ALS Vial : 21 Sample Multiplier: 1

Instrument :  
 MSVOA\_Y  
 ClientSampleId :  
 CB-22-K2-SO-74.5-051723

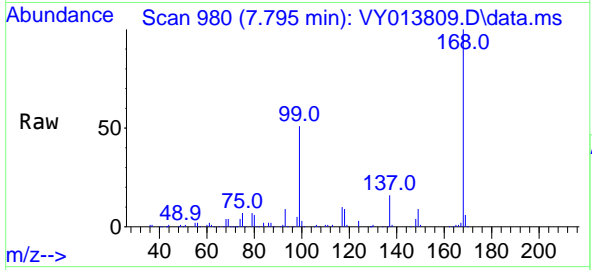
Quant Time: May 19 03:23:32 2023  
 Quant Method : Z:\voasrv\HPCHEM1\MSVOA\_Y\methods\82Y051723S.M  
 Quant Title : SW846 8260  
 QLast Update : Thu May 18 06:54:18 2023  
 Response via : Initial Calibration



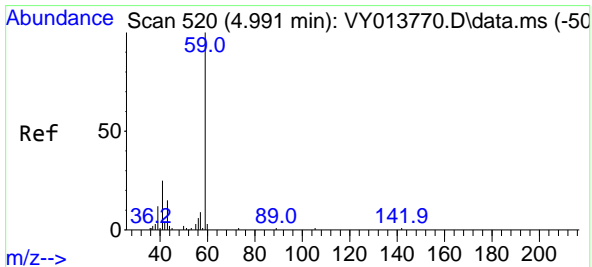
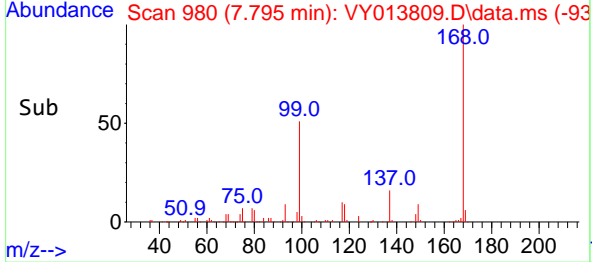
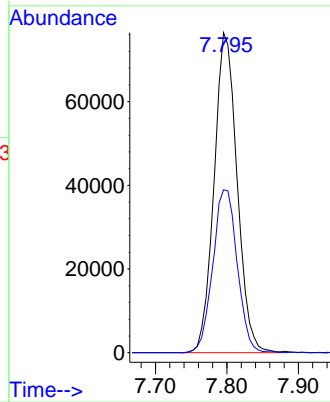


#1  
 Pentafluorobenzene  
 Concen: 50.000 ug/l  
 RT: 7.795 min Scan# 91  
 Delta R.T. 0.000 min  
 Lab File: VY013809.D  
 Acq: 18 May 2023 18:50

Instrument : MSVOA\_Y  
 ClientSampleId : CB-22-K2-SO-74.5-051723

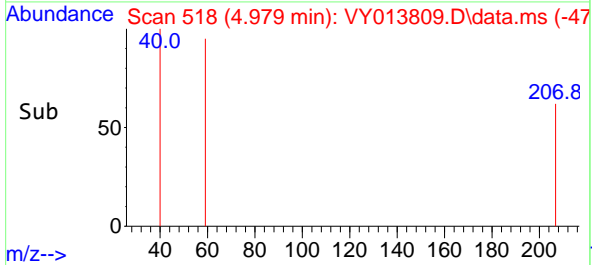
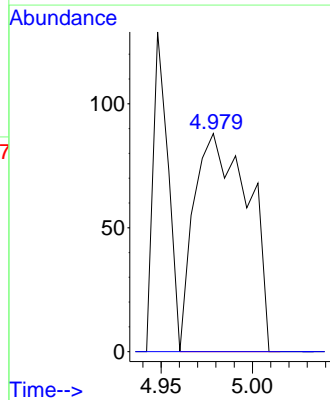
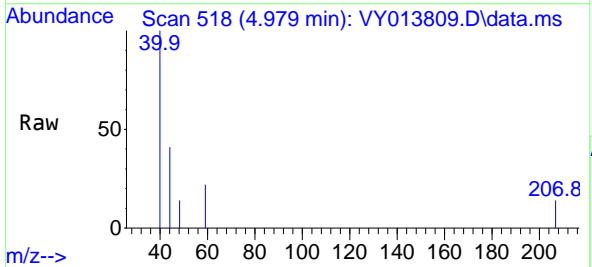


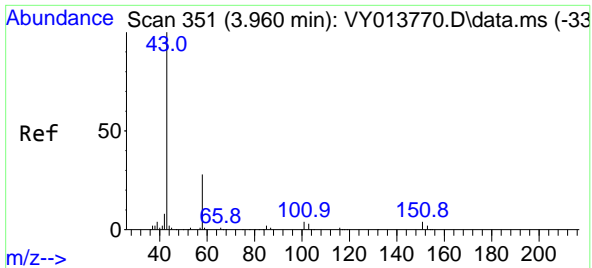
Tgt Ion:168 Resp: 171027  
 Ion Ratio Lower Upper  
 168 100  
 99 50.9 44.0 66.0



#11  
 Tert butyl alcohol  
 Concen: 1.125 ug/l  
 RT: 4.979 min Scan# 518  
 Delta R.T. -0.012 min  
 Lab File: VY013809.D  
 Acq: 18 May 2023 18:50

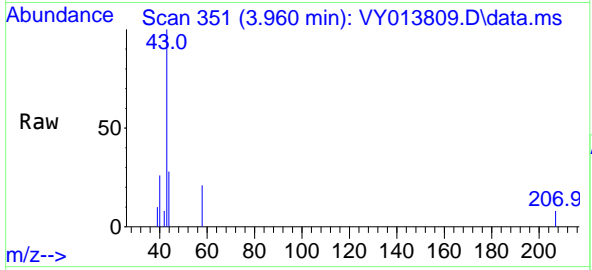
Tgt Ion: 59 Resp: 181  
 Ion Ratio Lower Upper  
 59 100  
 57 0.0 8.0 12.0#



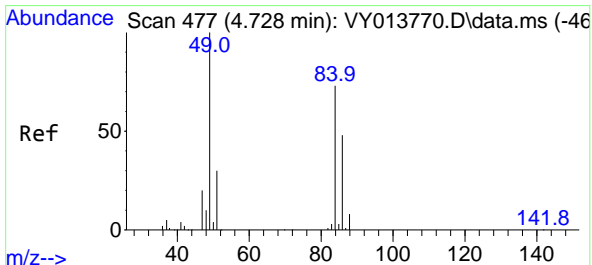
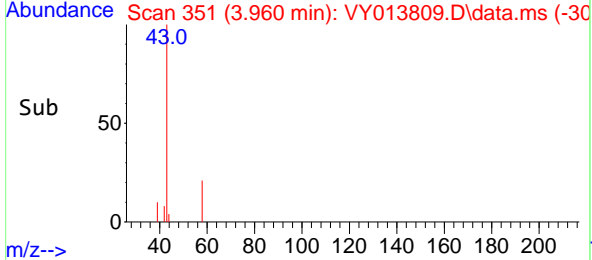
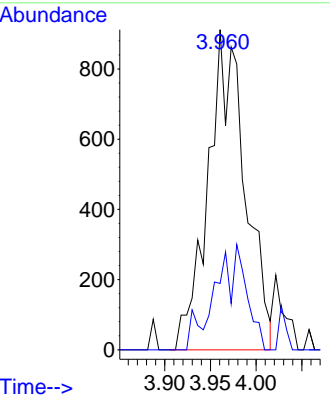


#16  
 Acetone  
 Concen: 4.294 ug/l  
 RT: 3.960 min Scan# 31  
 Delta R.T. 0.000 min  
 Lab File: VY013809.D  
 Acq: 18 May 2023 18:50

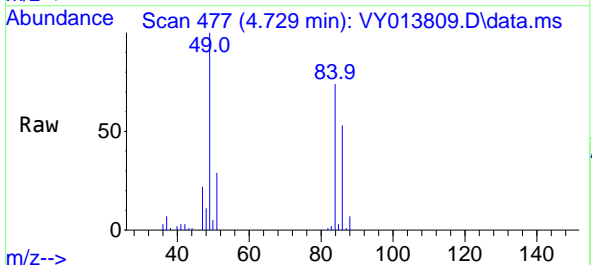
Instrument : MSVOA\_Y  
 ClientSampleId : CB-22-K2-SO-74.5-051723



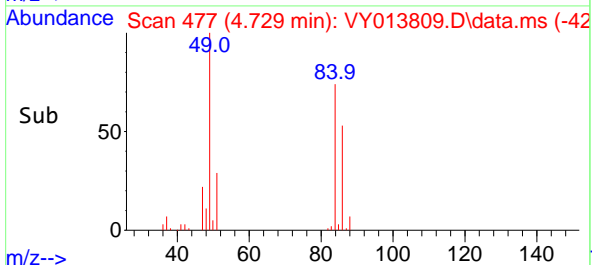
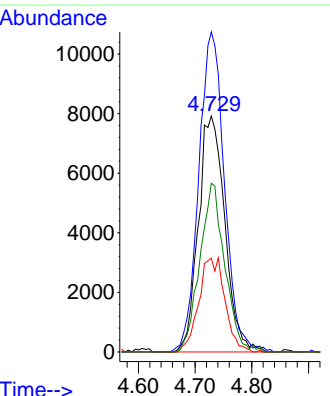
Tgt Ion: 43 Resp: 2574  
 Ion Ratio Lower Upper  
 43 100  
 58 20.7 23.7 35.5#

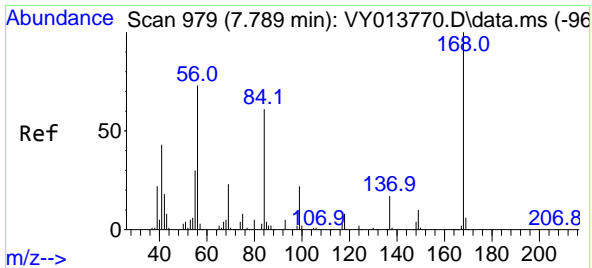


#20  
 Methylene Chloride  
 Concen: 9.198 ug/l  
 RT: 4.729 min Scan# 477  
 Delta R.T. 0.001 min  
 Lab File: VY013809.D  
 Acq: 18 May 2023 18:50



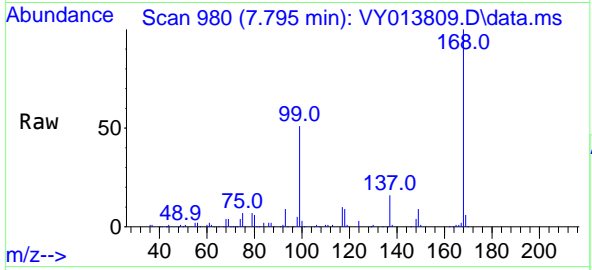
Tgt Ion: 84 Resp: 25672  
 Ion Ratio Lower Upper  
 84 100  
 49 135.6 109.4 164.0  
 51 39.7 32.8 49.2  
 86 71.5 52.4 78.6



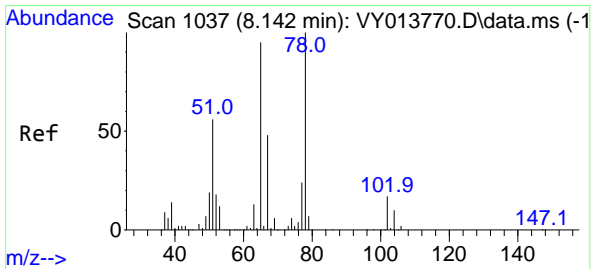
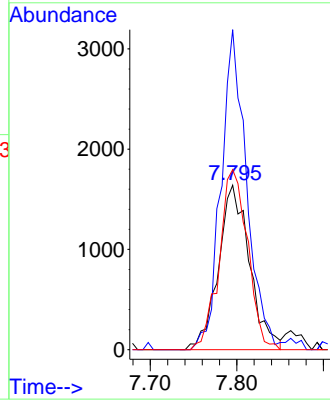
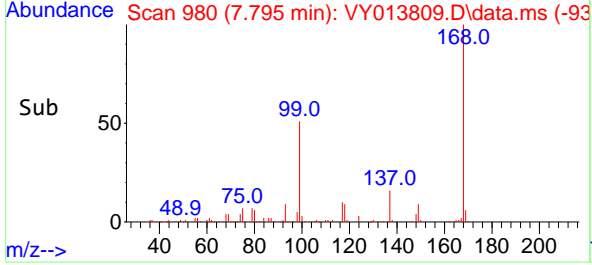


#31  
 Cyclohexane  
 Concen: 1.442 ug/l  
 RT: 7.795 min Scan# 91  
 Delta R.T. 0.006 min  
 Lab File: VY013809.D  
 Acq: 18 May 2023 18:50

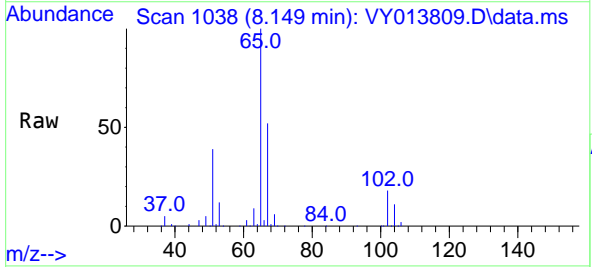
Instrument : MSVOA\_Y  
 ClientSampleId : CB-22-K2-SO-74.5-051723



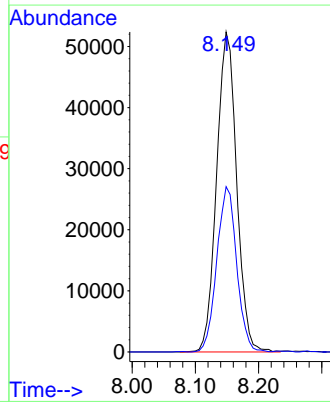
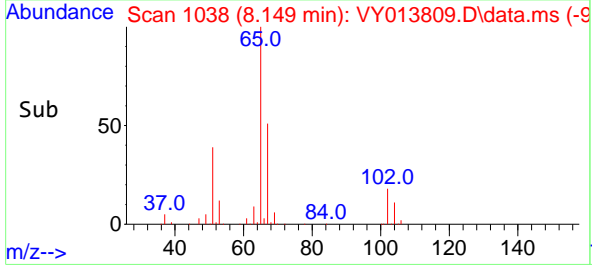
Tgt Ion: 56 Resp: 4108  
 Ion Ratio Lower Upper  
 56 100  
 69 194.5 25.8 38.6#  
 84 109.4 65.8 98.6#

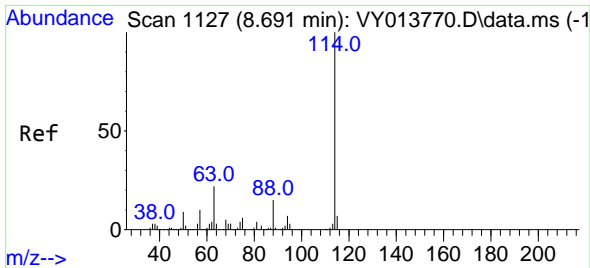


#33  
 1,2-Dichloroethane-d4  
 Concen: 57.877 ug/l  
 RT: 8.149 min Scan# 1038  
 Delta R.T. 0.006 min  
 Lab File: VY013809.D  
 Acq: 18 May 2023 18:50



Tgt Ion: 65 Resp: 114987  
 Ion Ratio Lower Upper  
 65 100  
 67 51.3 0.0 105.6



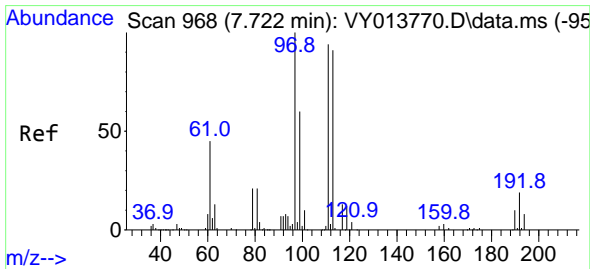
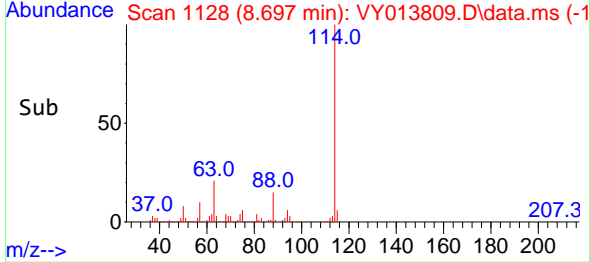
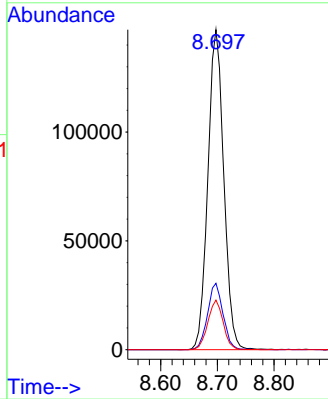
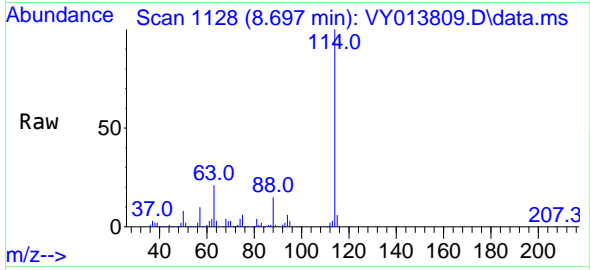


#34  
 1,4-Difluorobenzene  
 Concen: 50.000 ug/l  
 RT: 8.697 min Scan# 1128  
 Delta R.T. 0.006 min  
 Lab File: VY013809.D  
 Acq: 18 May 2023 18:50

Instrument : MSVOA\_Y  
 ClientSampleId : CB-22-K2-SO-74.5-051723

Tgt Ion:114 Resp: 286473

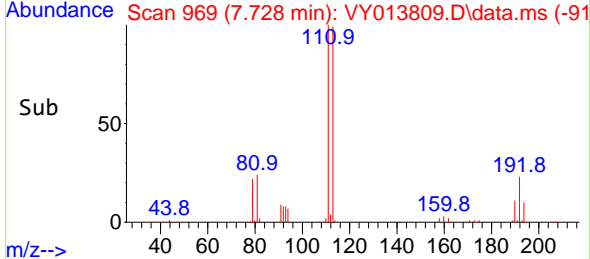
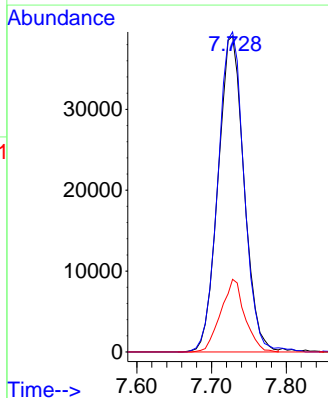
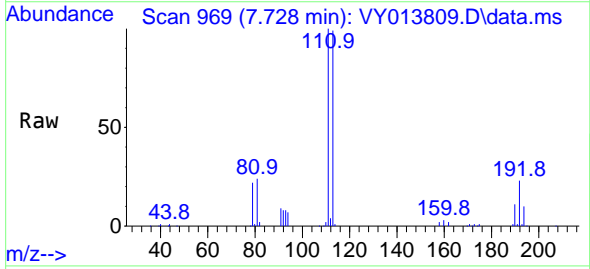
Ion	Ratio	Lower	Upper
114	100		
63	20.8	0.0	43.8
88	15.5	0.0	30.8

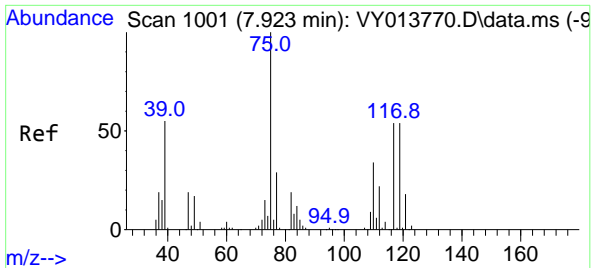


#35  
 Dibromofluoromethane  
 Concen: 51.211 ug/l  
 RT: 7.728 min Scan# 969  
 Delta R.T. 0.006 min  
 Lab File: VY013809.D  
 Acq: 18 May 2023 18:50

Tgt Ion:113 Resp: 94077

Ion	Ratio	Lower	Upper
113	100		
111	102.1	82.3	123.5
192	21.3	16.0	24.0



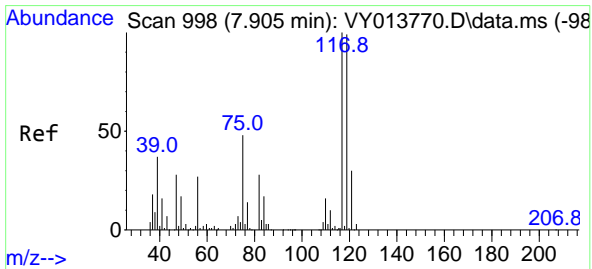
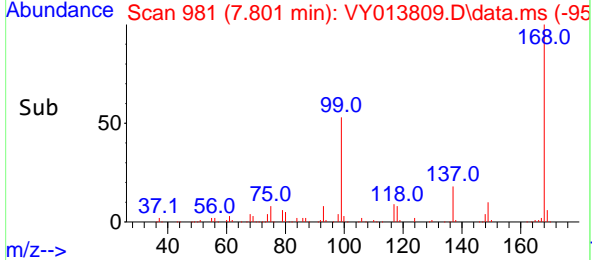
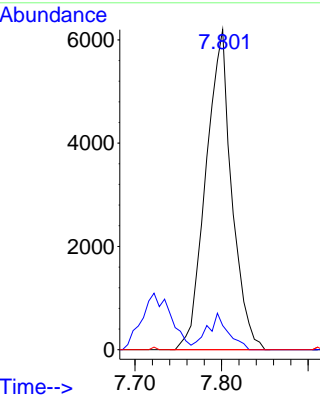
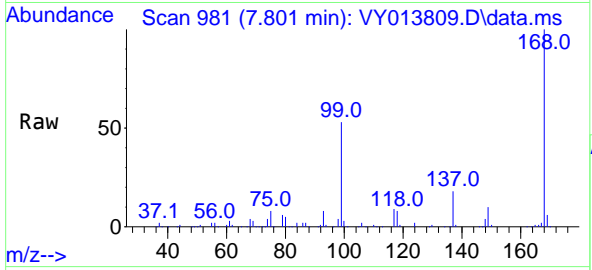


#36  
 1,1-Dichloropropene  
 Concen: 5.061 ug/l  
 RT: 7.801 min Scan# 91  
 Delta R.T. -0.122 min  
 Lab File: VY013809.D  
 Acq: 18 May 2023 18:50

Instrument : MSVOA\_Y  
 ClientSampleId : CB-22-K2-SO-74.5-051723

Tgt Ion: 75 Resp: 12845

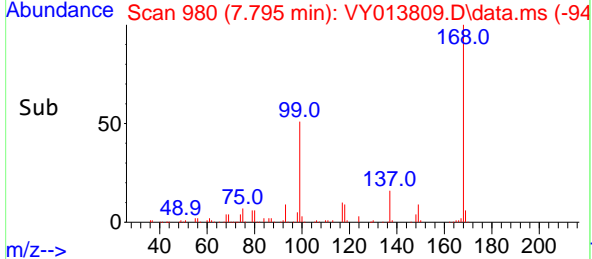
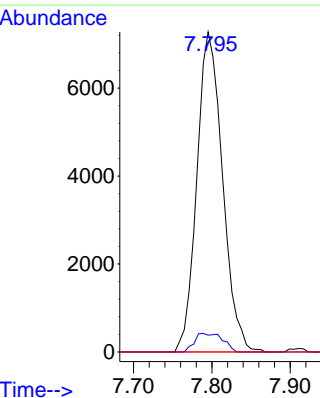
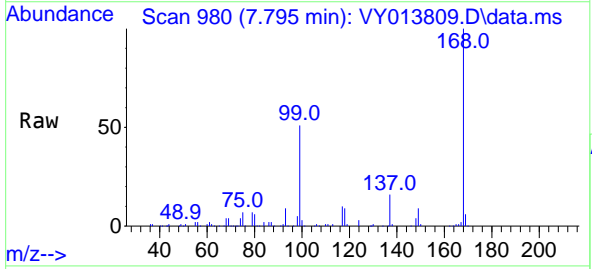
Ion	Ratio	Lower	Upper
75	100		
110	9.2	17.3	51.7#
77	0.0	24.6	36.8#

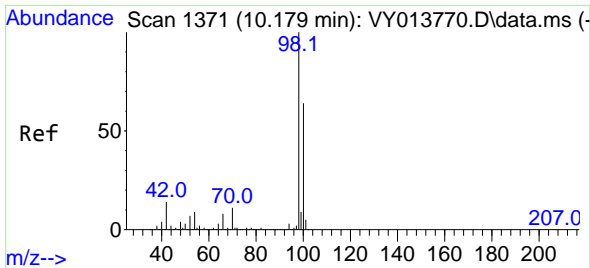


#38  
 Carbon Tetrachloride  
 Concen: 6.189 ug/l  
 RT: 7.795 min Scan# 980  
 Delta R.T. -0.110 min  
 Lab File: VY013809.D  
 Acq: 18 May 2023 18:50

Tgt Ion: 117 Resp: 16571

Ion	Ratio	Lower	Upper
117	100		
119	5.3	79.0	118.6#
121	0.0	24.1	36.1#

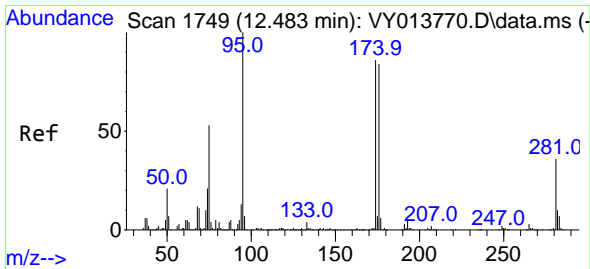
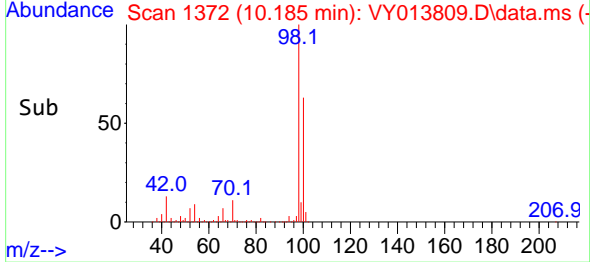
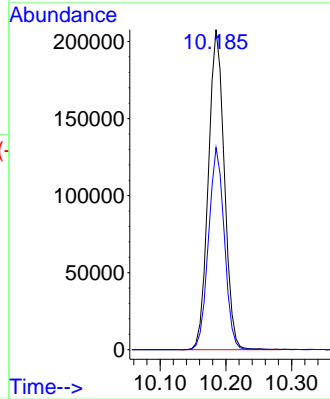
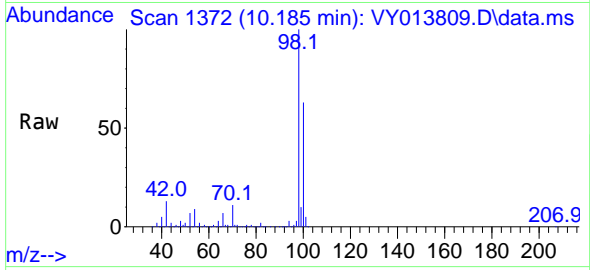




#50  
 Toluene-d8  
 Concen: 50.349 ug/l  
 RT: 10.185 min Scan# 11  
 Delta R.T. 0.006 min  
 Lab File: VY013809.D  
 Acq: 18 May 2023 18:50

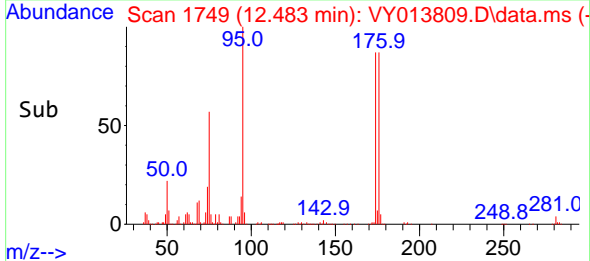
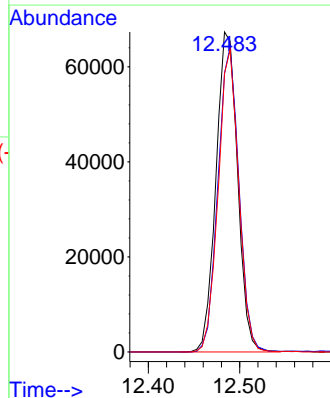
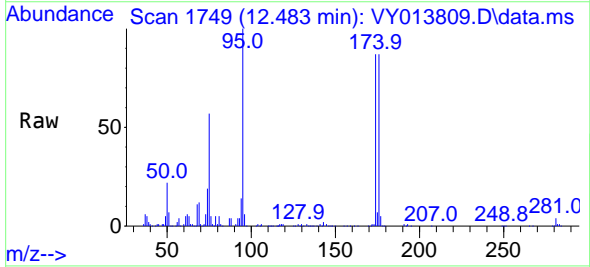
Instrument : MSVOA\_Y  
 ClientSampleId : CB-22-K2-SO-74.5-051723

Tgt Ion: 98 Resp: 350653  
 Ion Ratio Lower Upper  
 98 100  
 100 62.6 51.0 76.6

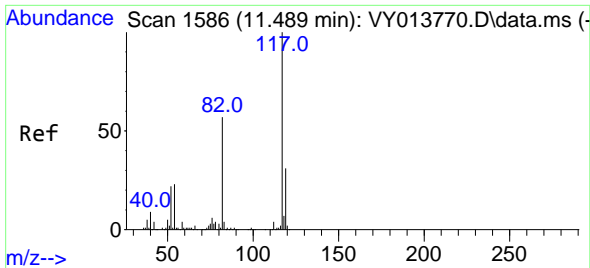


#62  
 4-Bromofluorobenzene  
 Concen: 47.785 ug/l  
 RT: 12.483 min Scan# 1749  
 Delta R.T. 0.000 min  
 Lab File: VY013809.D  
 Acq: 18 May 2023 18:50

Tgt Ion: 95 Resp: 110540  
 Ion Ratio Lower Upper  
 95 100  
 174 92.6 0.0 168.8  
 176 89.9 0.0 165.2

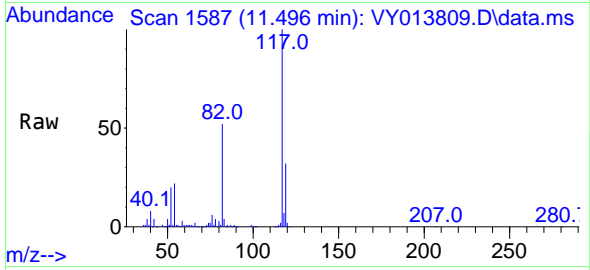






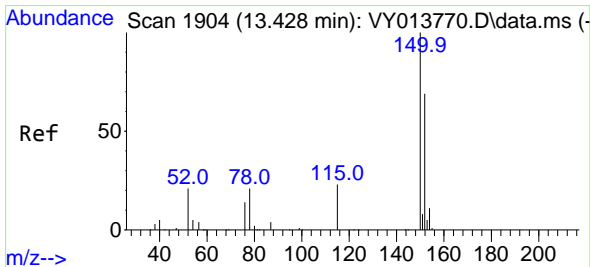
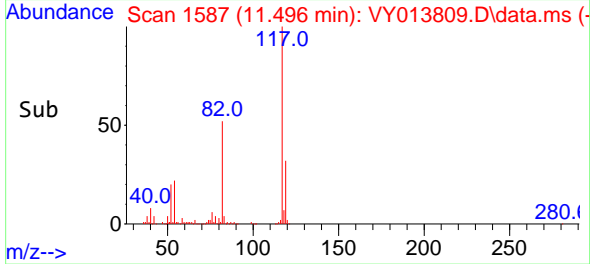
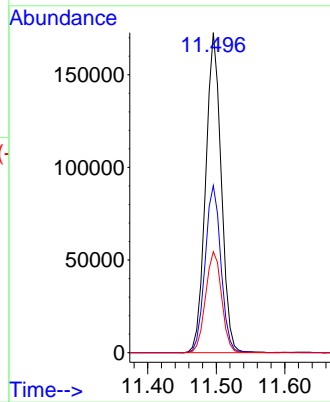
#63  
 Chlorobenzene-d5  
 Concen: 50.000 ug/l  
 RT: 11.496 min Scan# 11  
 Delta R.T. 0.006 min  
 Lab File: VY013809.D  
 Acq: 18 May 2023 18:50

Instrument : MSVOA\_Y  
 ClientSampleId : CB-22-K2-SO-74.5-051723

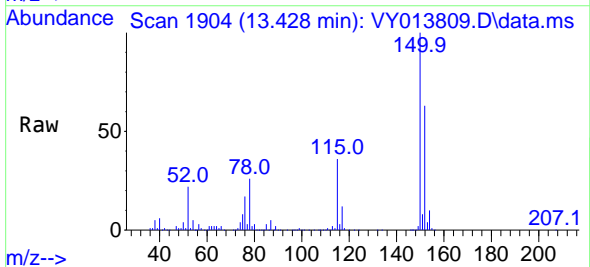


Tgt Ion:117 Resp: 273482

Ion	Ratio	Lower	Upper
117	100		
82	52.2	45.5	68.3
119	31.6	24.8	37.2

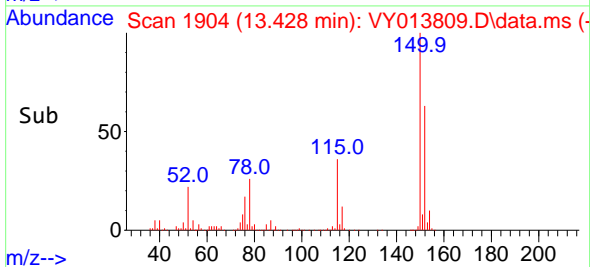
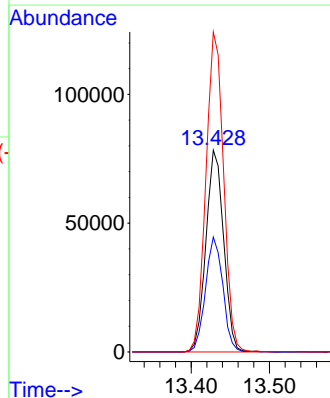


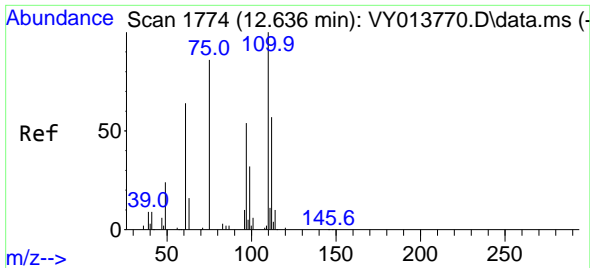
#72  
 1,4-Dichlorobenzene-d4  
 Concen: 50.000 ug/l  
 RT: 13.428 min Scan# 1904  
 Delta R.T. 0.000 min  
 Lab File: VY013809.D  
 Acq: 18 May 2023 18:50



Tgt Ion:152 Resp: 122967

Ion	Ratio	Lower	Upper
152	100		
115	55.9	28.5	85.5
150	157.7	0.0	347.0

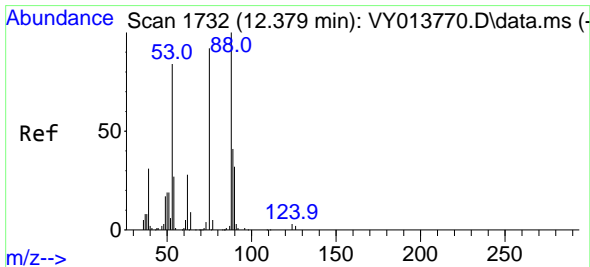
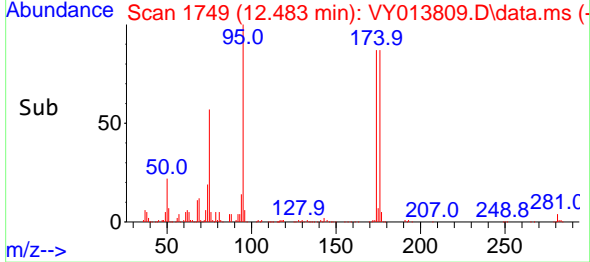
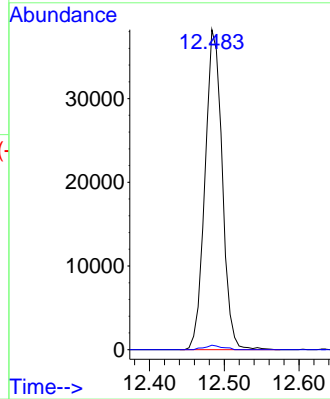
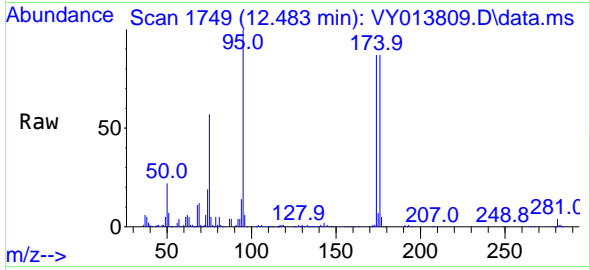




#76  
 1,2,3-Trichloropropane  
 Concen: 41.062 ug/l  
 RT: 12.483 min Scan# 1749  
 Delta R.T. -0.152 min  
 Lab File: VY013809.D  
 Acq: 18 May 2023 18:50

Instrument : MSVOA\_Y  
 ClientSampleId : CB-22-K2-SO-74.5-051723

Tgt Ion: 75 Resp: 61110  
 Ion Ratio Lower Upper  
 75 100  
 77 1.4 0.0 0.0#



#81  
 trans-1,4-Dichloro-2-butene  
 Concen: 91.420 ug/l  
 RT: 12.483 min Scan# 1749  
 Delta R.T. 0.104 min  
 Lab File: VY013809.D  
 Acq: 18 May 2023 18:50

Tgt Ion: 75 Resp: 61110  
 Ion Ratio Lower Upper  
 75 100  
 53 0.3 75.3 112.9#  
 89 0.1 35.4 53.2#

