

Data Path : Z:\voasrv\HPCHEM1\MSVOA\_Y\Data\VY051823\  
 Data File : VY013802.D  
 Acq On : 18 May 2023 16:00  
 Operator : KP/MD  
 Sample : 02825-01  
 Misc : 5.04g/5.0mL/MSVOA\_Y/SOIL  
 ALS Vial : 14 Sample Multiplier: 1

Instrument :  
 MSVOA\_Y  
 ClientSampleId :  
 OK-01-051723

Quant Time: May 19 03:22:13 2023  
 Quant Method : Z:\voasrv\HPCHEM1\MSVOA\_Y\methods\82Y051723S.M  
 Quant Title : SW846 8260  
 QLast Update : Thu May 18 06:54:18 2023  
 Response via : Initial Calibration

Compound	R.T.	QIon	Response	Conc	Units	Dev(Min)
Internal Standards						
1) Pentafluorobenzene	7.783	168	26746	50.000	ug/l	-0.01
34) 1,4-Difluorobenzene	8.691	114	35935	50.000	ug/l	0.00
63) Chlorobenzene-d5	11.490	117	27307	50.000	ug/l	0.00
72) 1,4-Dichlorobenzene-d4	13.428	152	8433	50.000	ug/l	0.00
System Monitoring Compounds						
33) 1,2-Dichloroethane-d4	8.136	65	10824	34.838	ug/l	0.00
Spiked Amount	50.000	Range	50 - 163	Recovery	=	69.680%
35) Dibromofluoromethane	7.716	113	11356	49.280	ug/l	0.00
Spiked Amount	50.000	Range	54 - 147	Recovery	=	98.560%
50) Toluene-d8	10.179	98	40874	46.787	ug/l	0.00
Spiked Amount	50.000	Range	58 - 134	Recovery	=	93.580%
62) 4-Bromofluorobenzene	12.483	95	8329	28.703	ug/l	0.00
Spiked Amount	50.000	Range	30 - 143	Recovery	=	57.400%

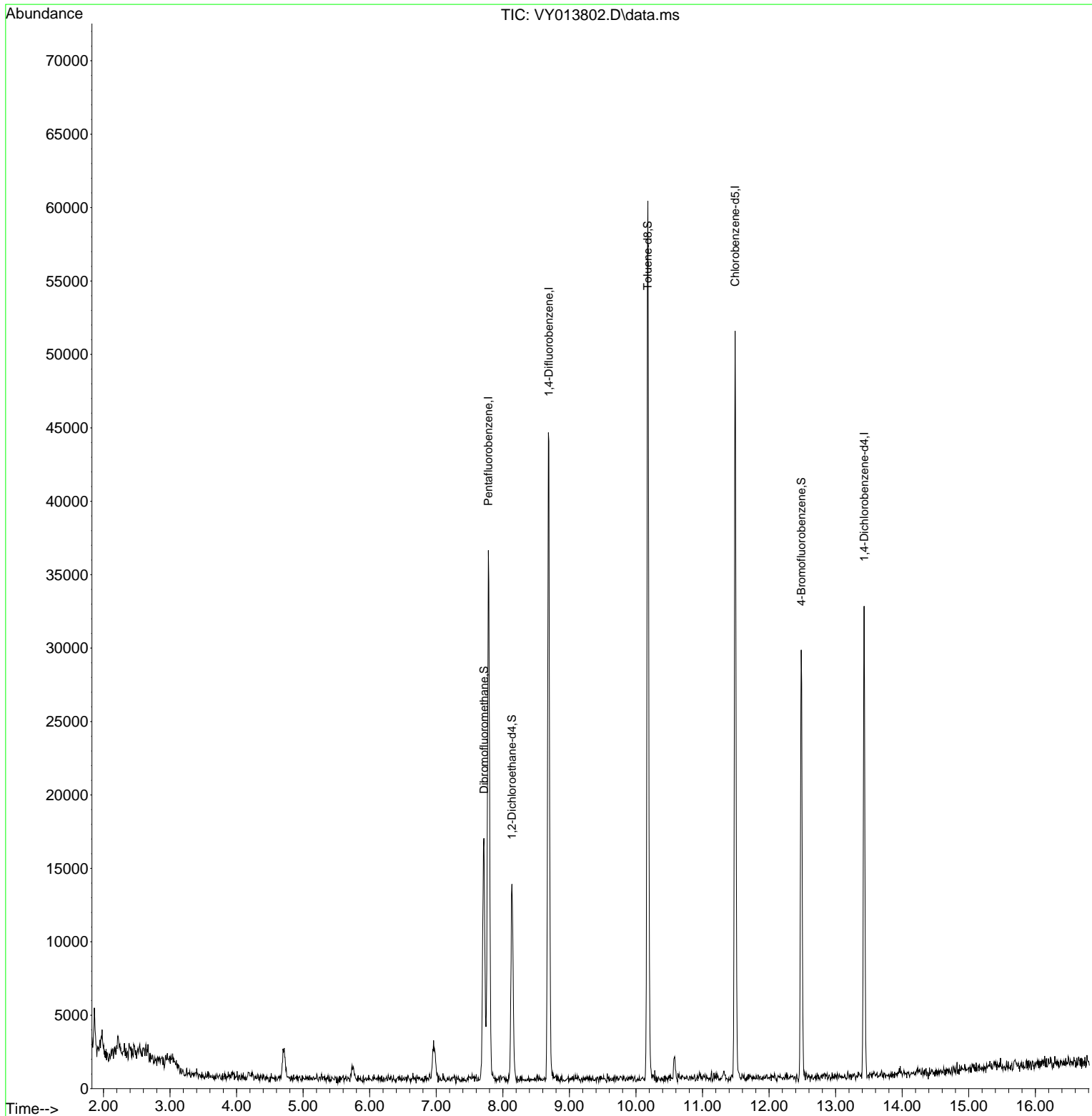
Target Compounds Qvalue

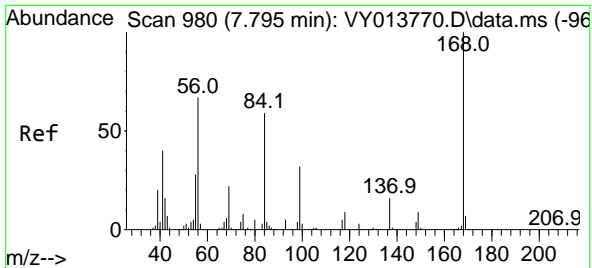
(#) = qualifier out of range (m) = manual integration (+) = signals summed

Data Path : Z:\voasrv\HPCHEM1\MSVOA\_Y\Data\VY051823\  
 Data File : VY013802.D  
 Acq On : 18 May 2023 16:00  
 Operator : KP/MD  
 Sample : 02825-01  
 Misc : 5.04g/5.0mL/MSVOA\_Y/SOIL  
 ALS Vial : 14 Sample Multiplier: 1

Instrument :  
 MSVOA\_Y  
 ClientSampleId :  
 OK-01-051723

Quant Time: May 19 03:22:13 2023  
 Quant Method : Z:\voasrv\HPCHEM1\MSVOA\_Y\methods\82Y051723S.M  
 Quant Title : SW846 8260  
 QLast Update : Thu May 18 06:54:18 2023  
 Response via : Initial Calibration

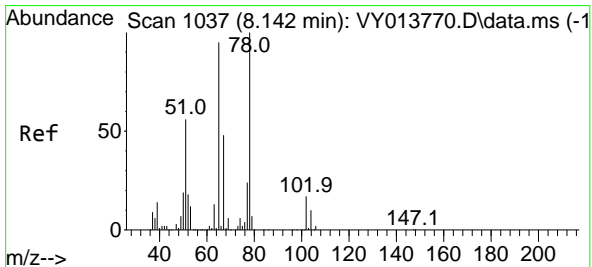
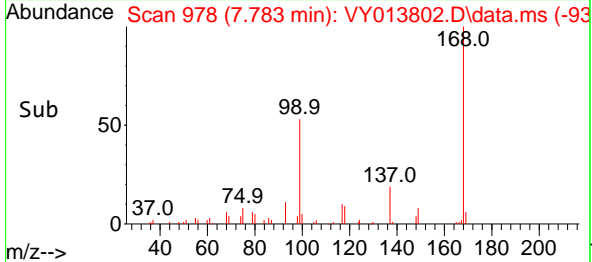
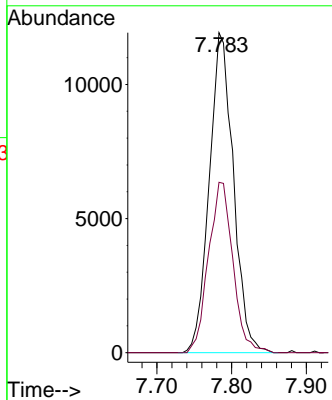
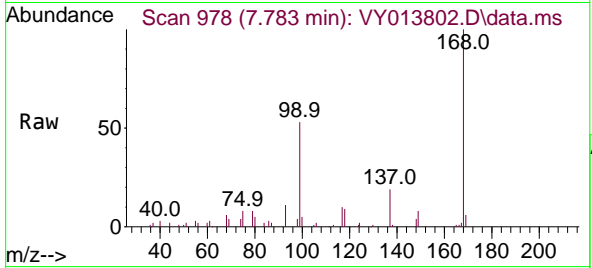




#1  
 Pentafluorobenzene  
 Concen: 50.000 ug/l  
 RT: 7.783 min Scan# 91  
 Delta R.T. -0.012 min  
 Lab File: VY013802.D  
 Acq: 18 May 2023 16:00

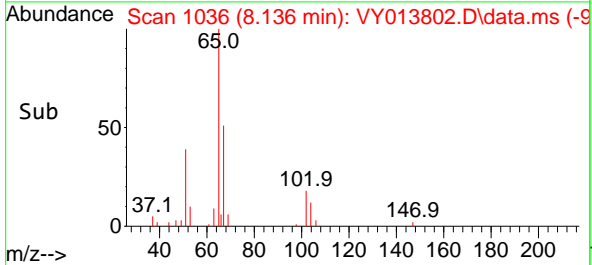
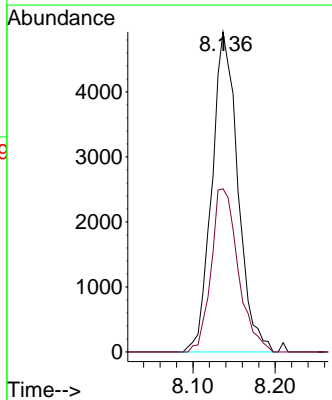
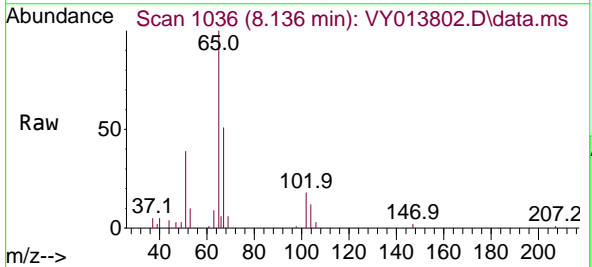
Instrument :  
 MSVOA\_Y  
 ClientSampleId :  
 OK-01-051723

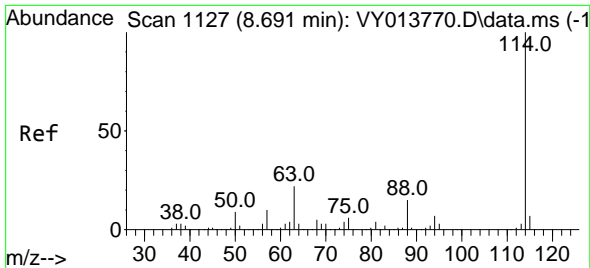
Tgt Ion:168 Resp: 26746  
 Ion Ratio Lower Upper  
 168 100  
 99 53.3 44.0 66.0



#33  
 1,2-Dichloroethane-d4  
 Concen: 34.838 ug/l  
 RT: 8.136 min Scan# 1036  
 Delta R.T. -0.006 min  
 Lab File: VY013802.D  
 Acq: 18 May 2023 16:00

Tgt Ion: 65 Resp: 10824  
 Ion Ratio Lower Upper  
 65 100  
 67 53.0 0.0 105.6

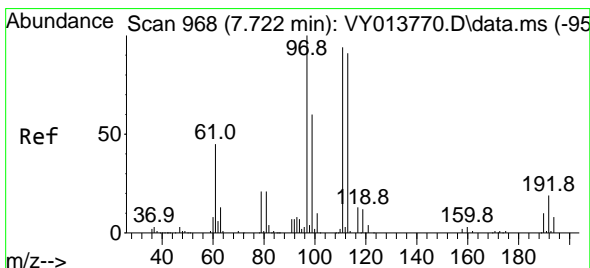
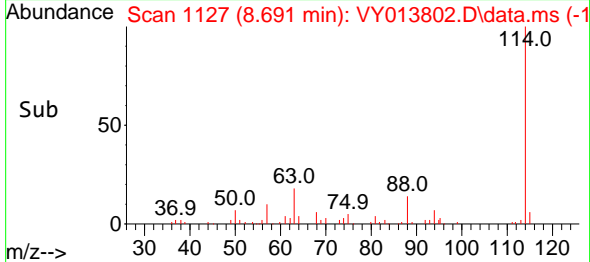
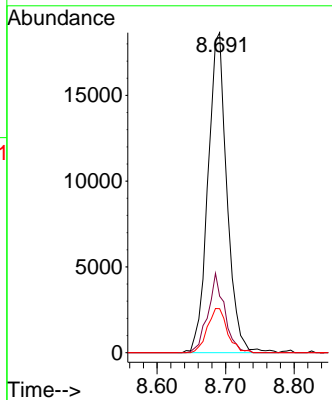
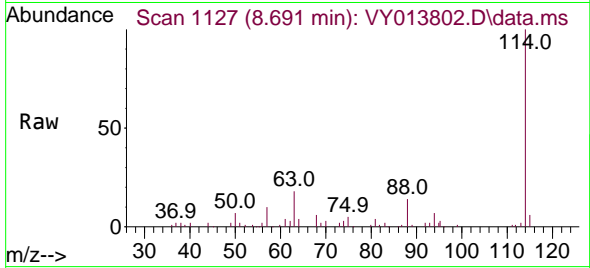




#34  
 1,4-Difluorobenzene  
 Concen: 50.000 ug/l  
 RT: 8.691 min Scan# 1127  
 Delta R.T. 0.000 min  
 Lab File: VY013802.D  
 Acq: 18 May 2023 16:00

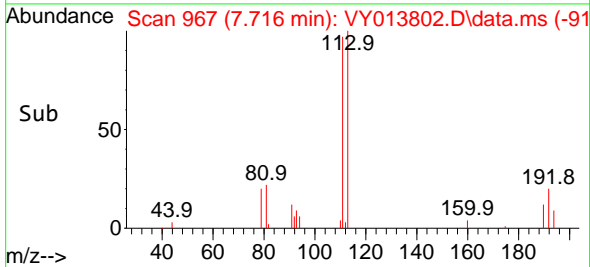
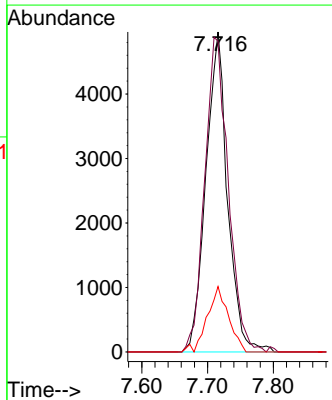
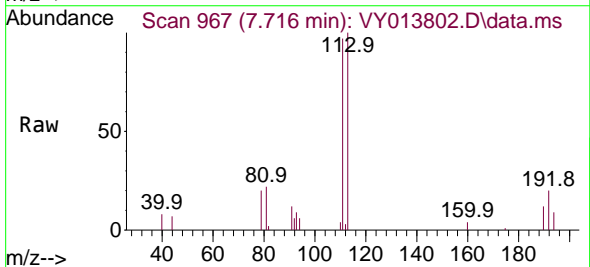
Instrument : MSVOA\_Y  
 ClientSampleId : OK-01-051723

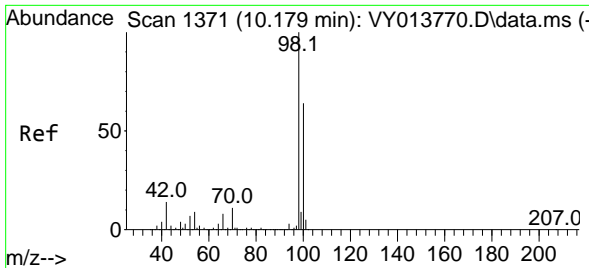
Tgt Ion	Resp	Lower	Upper
114	100		
63	17.6	0.0	43.8
88	13.8	0.0	30.8



#35  
 Dibromofluoromethane  
 Concen: 49.280 ug/l  
 RT: 7.716 min Scan# 967  
 Delta R.T. -0.006 min  
 Lab File: VY013802.D  
 Acq: 18 May 2023 16:00

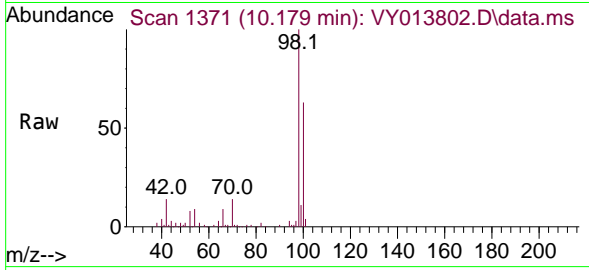
Tgt Ion	Resp	Lower	Upper
113	100		
111	107.2	82.3	123.5
192	20.0	16.0	24.0



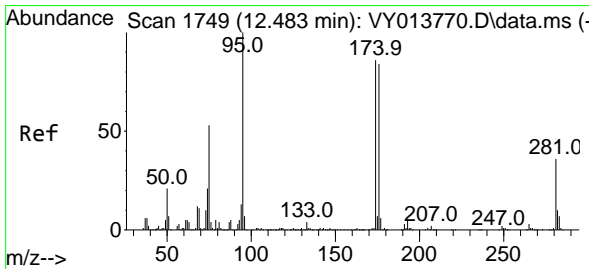
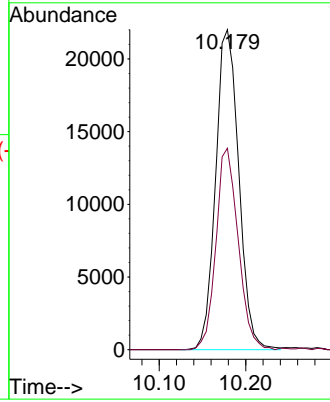
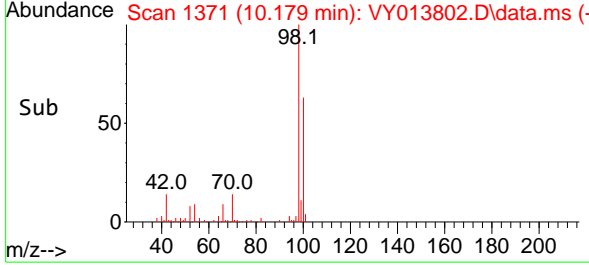


#50  
 Toluene-d8  
 Concen: 46.787 ug/l  
 RT: 10.179 min Scan# 1371  
 Delta R.T. 0.000 min  
 Lab File: VY013802.D  
 Acq: 18 May 2023 16:00

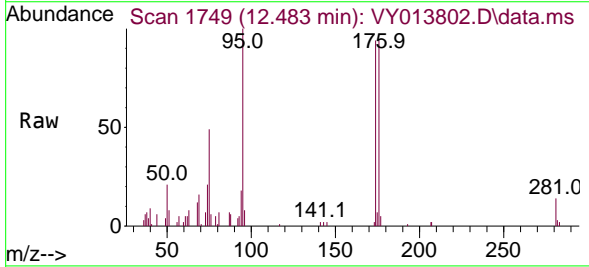
Instrument : MSVOA\_Y  
 ClientSampleId : OK-01-051723



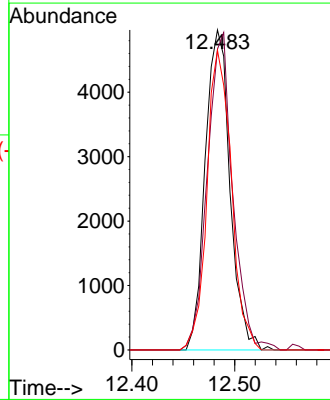
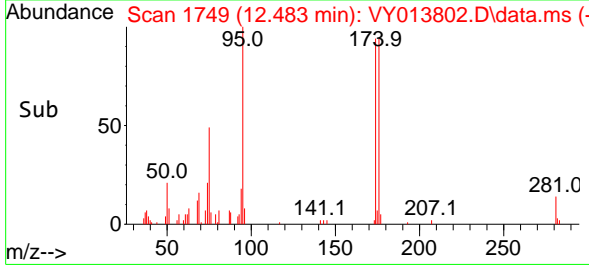
Tgt Ion: 98 Resp: 40874  
 Ion Ratio Lower Upper  
 98 100  
 100 60.4 51.0 76.6

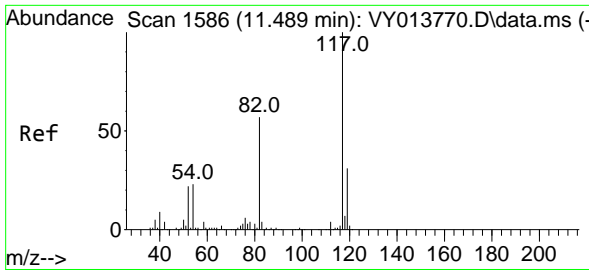


#62  
 4-Bromofluorobenzene  
 Concen: 28.703 ug/l  
 RT: 12.483 min Scan# 1749  
 Delta R.T. 0.000 min  
 Lab File: VY013802.D  
 Acq: 18 May 2023 16:00



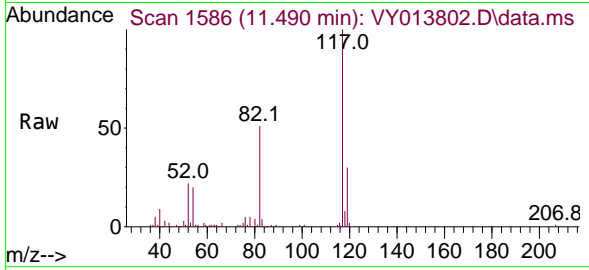
Tgt Ion: 95 Resp: 8329  
 Ion Ratio Lower Upper  
 95 100  
 174 101.6 0.0 168.8  
 176 92.2 0.0 165.2





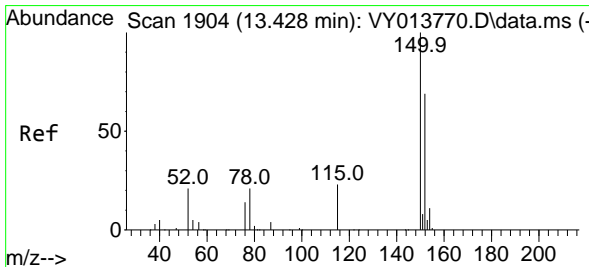
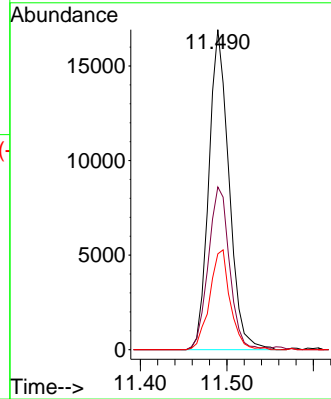
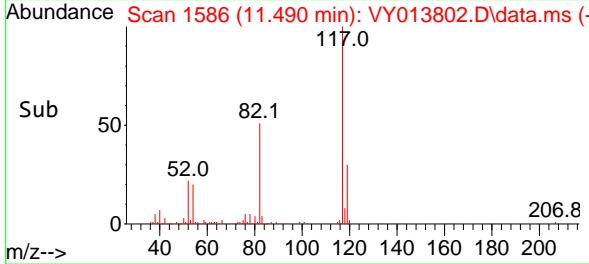
#63  
 Chlorobenzene-d5  
 Concen: 50.000 ug/l  
 RT: 11.490 min Scan# 11  
 Delta R.T. 0.000 min  
 Lab File: VY013802.D  
 Acq: 18 May 2023 16:00

Instrument : MSVOA\_Y  
 ClientSampleId : OK-01-051723

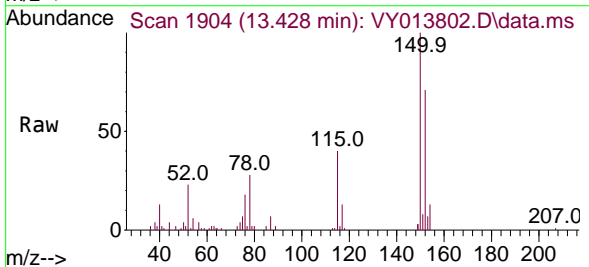


Tgt Ion:117 Resp: 27307

Ion	Ratio	Lower	Upper
117	100		
82	50.9	45.5	68.3
119	30.0	24.8	37.2



#72  
 1,4-Dichlorobenzene-d4  
 Concen: 50.000 ug/l  
 RT: 13.428 min Scan# 1904  
 Delta R.T. 0.000 min  
 Lab File: VY013802.D  
 Acq: 18 May 2023 16:00



Tgt Ion:152 Resp: 8433

Ion	Ratio	Lower	Upper
152	100		
115	56.1	28.5	85.5
150	148.6	0.0	347.0

