

Data Path : Z:\voasrv\HPCHEM1\MSVOA_Y\Data\VY052623\
 Data File : VY013896.D
 Acq On : 26 May 2023 16:23
 Operator : KP/MD
 Sample : 02920-01RE
 Misc : 5.08g/5.0mL/MSVOA_Y/SOIL
 ALS Vial : 10 Sample Multiplier: 1

Instrument :
 MSVOA_Y
 ClientSampleId :
 280608RE

Quant Time: May 29 04:34:03 2023
 Quant Method : Z:\voasrv\HPCHEM1\MSVOA_Y\methods\82Y052323S.M
 Quant Title : SW846 8260
 QLast Update : Wed May 24 05:25:47 2023
 Response via : Initial Calibration

Compound	R.T.	QIon	Response	Conc	Units	Dev(Min)

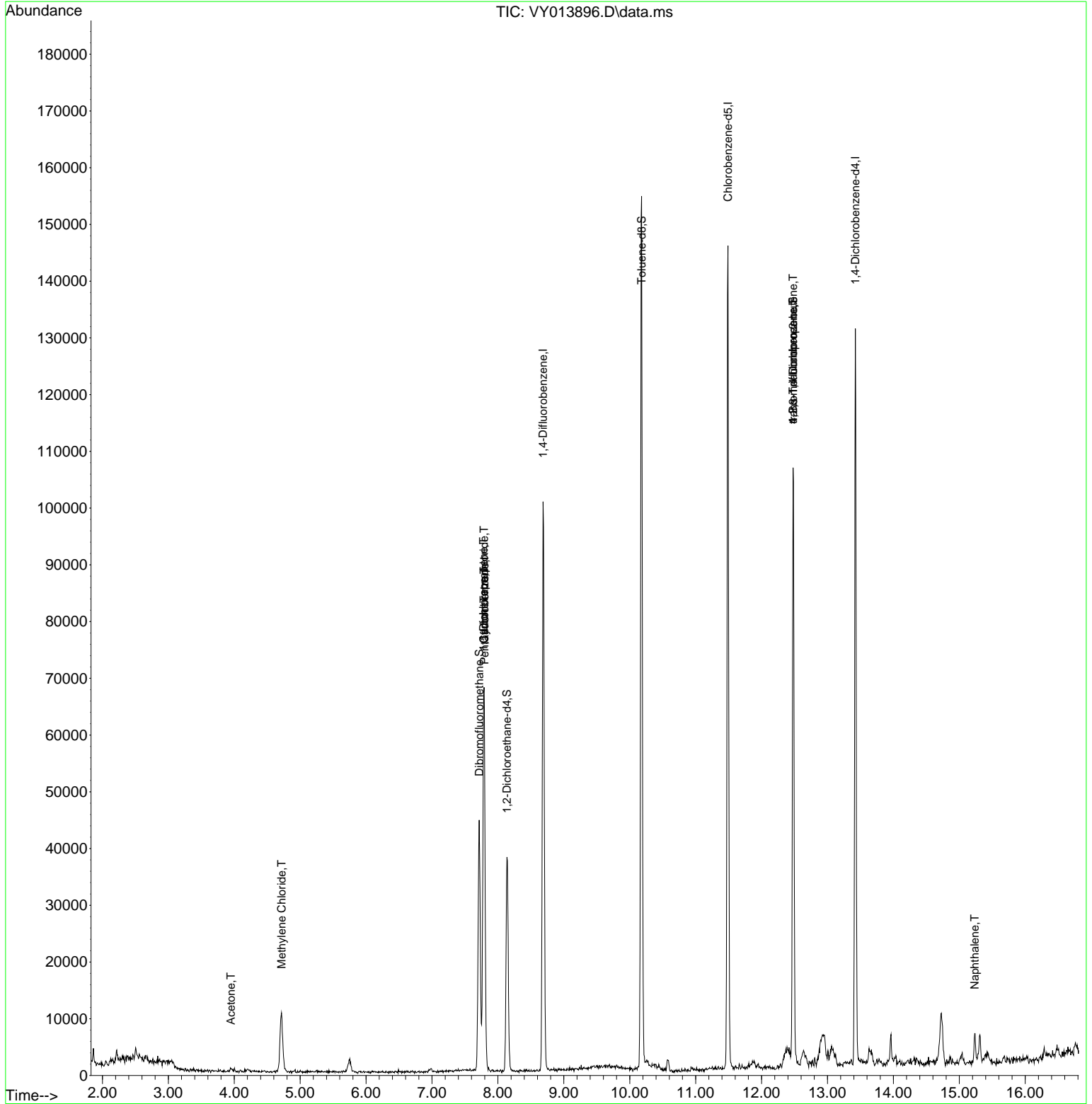
Internal Standards						
1) Pentafluorobenzene	7.795	168	53782	50.000	ug/l	0.00
34) 1,4-Difluorobenzene	8.685	114	84214	50.000	ug/l	-0.01
63) Chlorobenzene-d5	11.490	117	78235	50.000	ug/l	0.00
72) 1,4-Dichlorobenzene-d4	13.422	152	32412	50.000	ug/l	0.00
System Monitoring Compounds						
33) 1,2-Dichloroethane-d4	8.137	65	32471	52.187	ug/l	-0.01
Spiked Amount	50.000	Range	50 - 163	Recovery	=	104.380%
35) Dibromofluoromethane	7.716	113	29165	53.626	ug/l	0.00
Spiked Amount	50.000	Range	54 - 147	Recovery	=	107.260%
50) Toluene-d8	10.179	98	102108	49.398	ug/l	0.00
Spiked Amount	50.000	Range	58 - 134	Recovery	=	98.800%
62) 4-Bromofluorobenzene	12.477	95	29508	42.947	ug/l	0.00
Spiked Amount	50.000	Range	30 - 143	Recovery	=	85.900%
Target Compounds						
						Qvalue
16) Acetone	3.948	43	794	4.300	ug/l	94
20) Methylene Chloride	4.716	84	7167	8.856	ug/l #	92
31) Cyclohexane	7.789	56	1369	1.432	ug/l #	52
36) 1,1-Dichloropropene	7.783	75	4067	4.910	ug/l #	52
38) Carbon Tetrachloride	7.789	117	5197	5.517	ug/l #	20
76) 1,2,3-Trichloropropane	12.477	75	16008	41.886	ug/l #	100
81) trans-1,4-Dichloro-2-b...	12.477	75	16008	90.921	ug/l #	10
95) Naphthalene	15.233	128	4781	7.691	ug/l	96

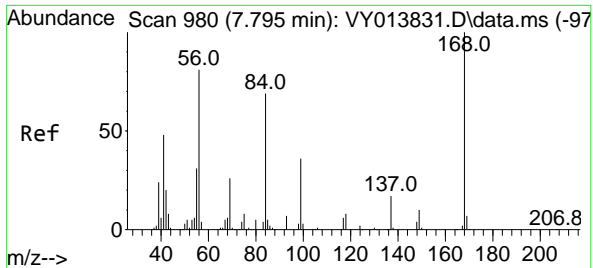
(#) = qualifier out of range (m) = manual integration (+) = signals summed

Data Path : Z:\voasrv\HPCHEM1\MSVOA_Y\Data\VY052623\
 Data File : VY013896.D
 Acq On : 26 May 2023 16:23
 Operator : KP/MD
 Sample : 02920-01RE
 Misc : 5.08g/5.0mL/MSVOA_Y/SOIL
 ALS Vial : 10 Sample Multiplier: 1

Instrument :
 MSVOA_Y
 ClientSampleId :
 280608RE

Quant Time: May 29 04:34:03 2023
 Quant Method : Z:\voasrv\HPCHEM1\MSVOA_Y\methods\82Y052323S.M
 Quant Title : SW846 8260
 QLast Update : Wed May 24 05:25:47 2023
 Response via : Initial Calibration

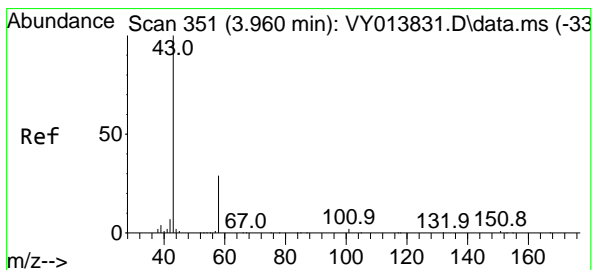
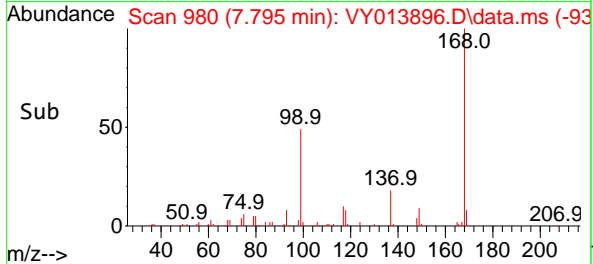
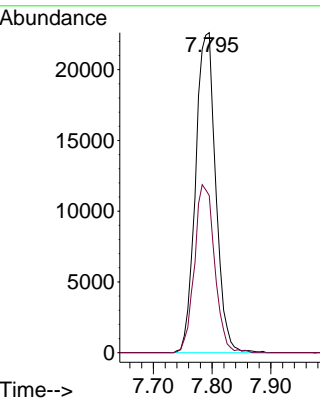
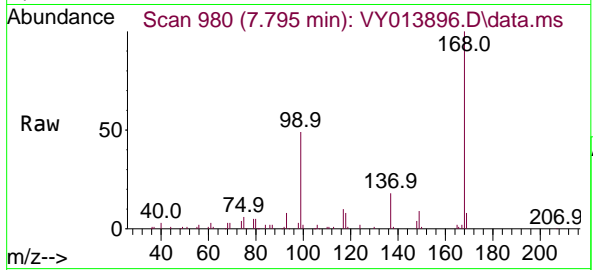




#1
 Pentafluorobenzene
 Concen: 50.000 ug/l
 RT: 7.795 min Scan# 91
 Delta R.T. 0.000 min
 Lab File: VY013896.D
 Acq: 26 May 2023 16:23

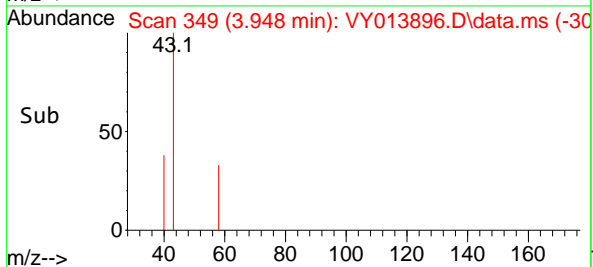
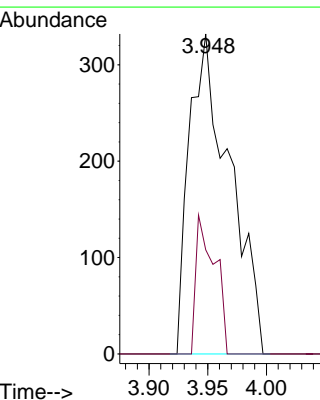
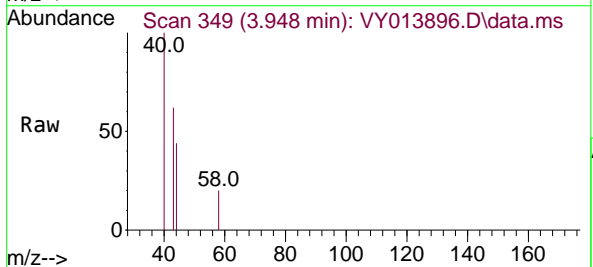
Instrument :
 MSVOA_Y
 ClientSampleId :
 280608RE

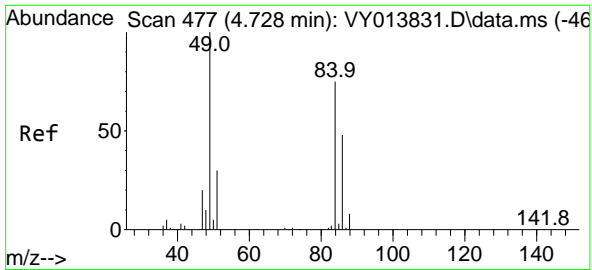
Tgt Ion:168 Resp: 53782
 Ion Ratio Lower Upper
 168 100
 99 49.1 43.4 65.2



#16
 Acetone
 Concen: 4.300 ug/l
 RT: 3.948 min Scan# 349
 Delta R.T. -0.012 min
 Lab File: VY013896.D
 Acq: 26 May 2023 16:23

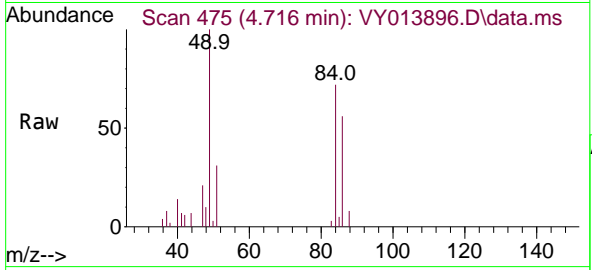
Tgt Ion: 43 Resp: 794
 Ion Ratio Lower Upper
 43 100
 58 32.5 23.3 34.9



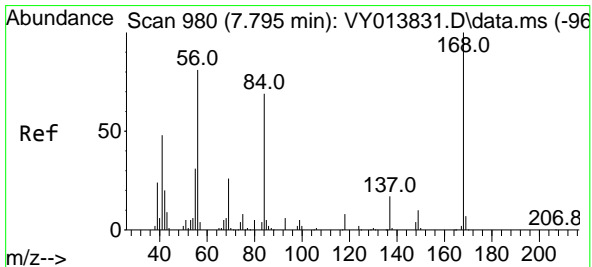
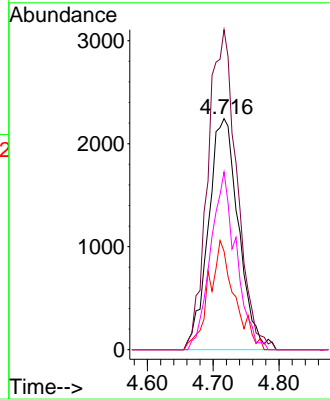
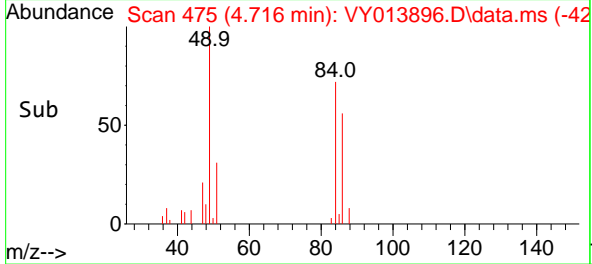


#20
Methylene Chloride
Concen: 8.856 ug/l
RT: 4.716 min Scan# 41
Delta R.T. -0.012 min
Lab File: VY013896.D
Acq: 26 May 2023 16:23

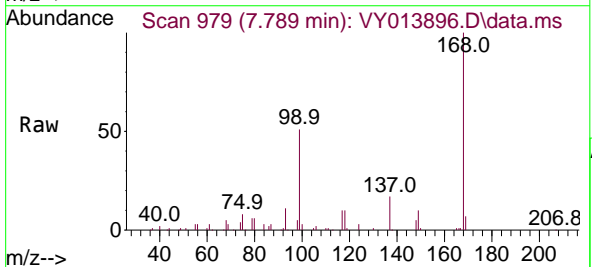
Instrument : MSVOA_Y
ClientSampleId : 280608RE



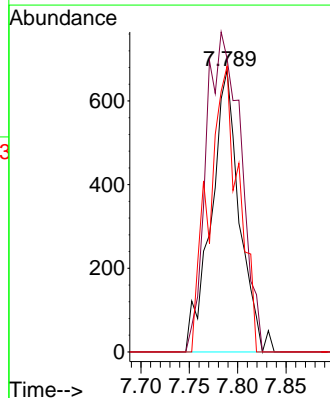
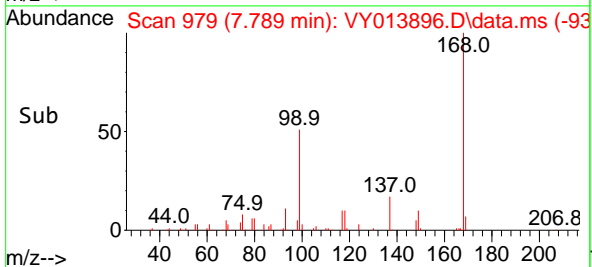
Tgt Ion: 84 Resp: 7167
Ion Ratio Lower Upper
84 100
49 138.5 106.2 159.2
51 42.6 31.4 47.0
86 77.0 50.6 75.8#

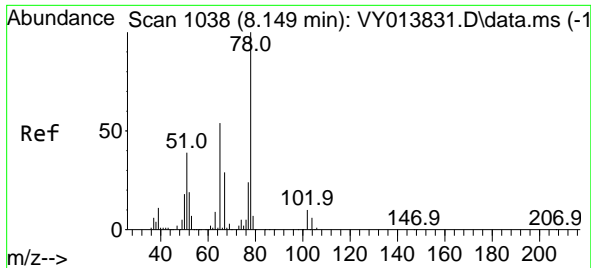


#31
Cyclohexane
Concen: 1.432 ug/l
RT: 7.789 min Scan# 979
Delta R.T. -0.006 min
Lab File: VY013896.D
Acq: 26 May 2023 16:23



Tgt Ion: 56 Resp: 1369
Ion Ratio Lower Upper
56 100
69 104.2 25.8 38.8#
84 101.5 68.2 102.2

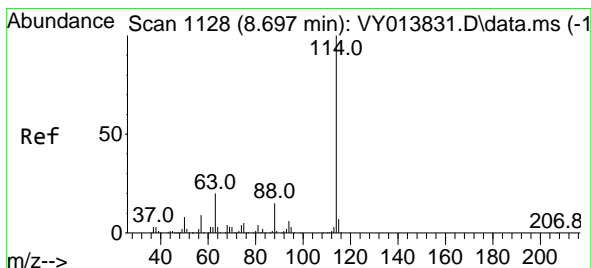
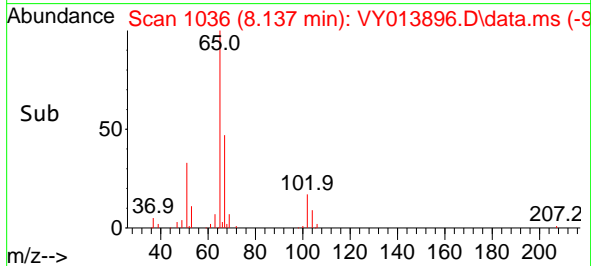
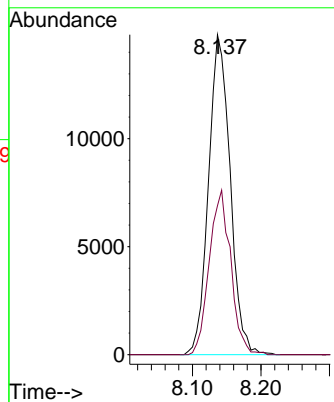
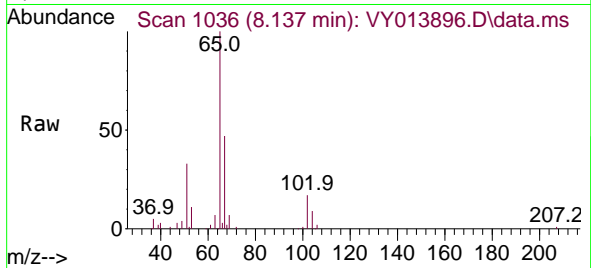




#33
 1,2-Dichloroethane-d4
 Concen: 52.187 ug/l
 RT: 8.137 min Scan# 1036
 Delta R.T. -0.012 min
 Lab File: VY013896.D
 Acq: 26 May 2023 16:23

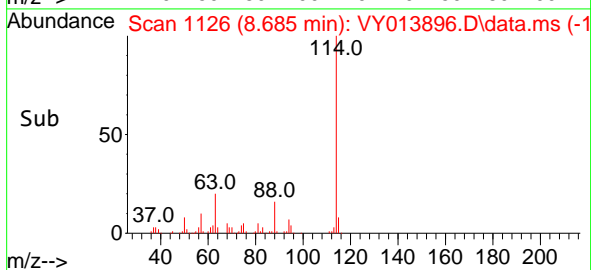
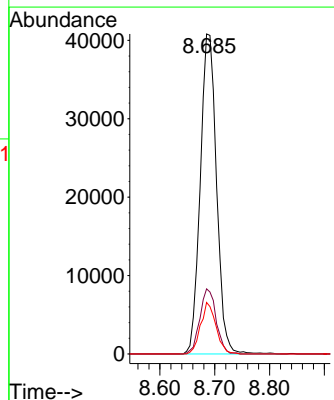
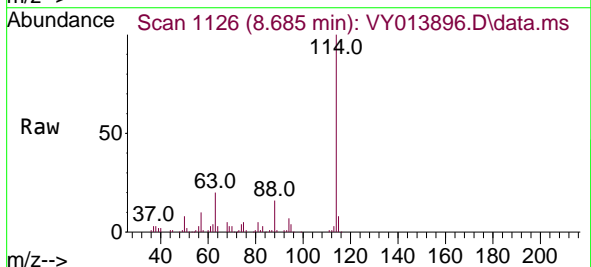
Instrument : MSVOA_Y
 ClientSampleId : 280608RE

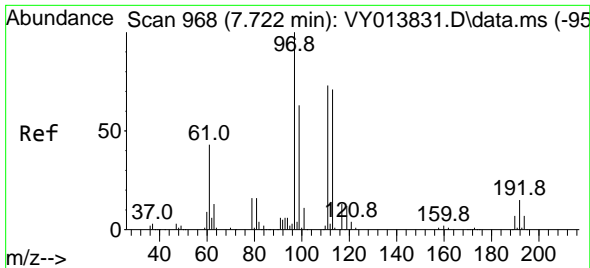
Tgt Ion: 65 Resp: 32471
 Ion Ratio Lower Upper
 65 100
 67 51.0 0.0 104.4



#34
 1,4-Difluorobenzene
 Concen: 50.000 ug/l
 RT: 8.685 min Scan# 1126
 Delta R.T. -0.012 min
 Lab File: VY013896.D
 Acq: 26 May 2023 16:23

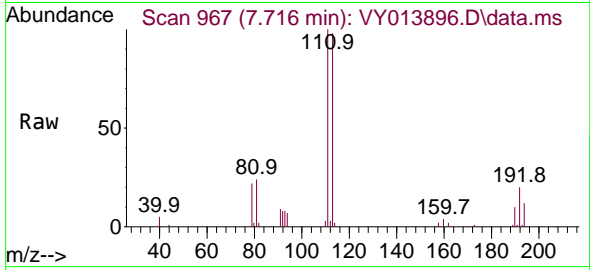
Tgt Ion: 114 Resp: 84214
 Ion Ratio Lower Upper
 114 100
 63 20.4 0.0 40.2
 88 16.1 0.0 30.0



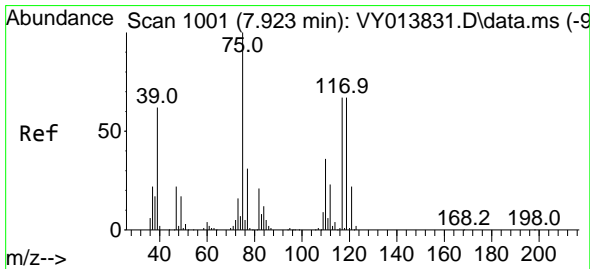
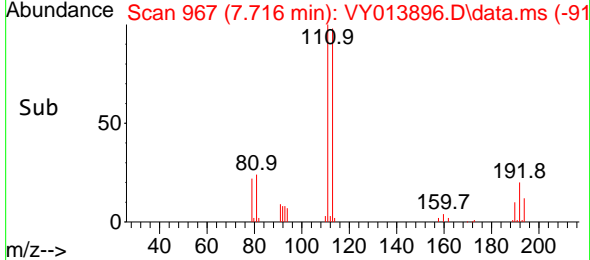
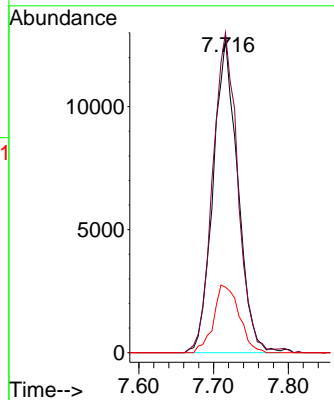


#35
 Dibromofluoromethane
 Concen: 53.626 ug/l
 RT: 7.716 min Scan# 90
 Delta R.T. -0.006 min
 Lab File: VY013896.D
 Acq: 26 May 2023 16:23

Instrument : MSVOA_Y
 ClientSampleId : 280608RE

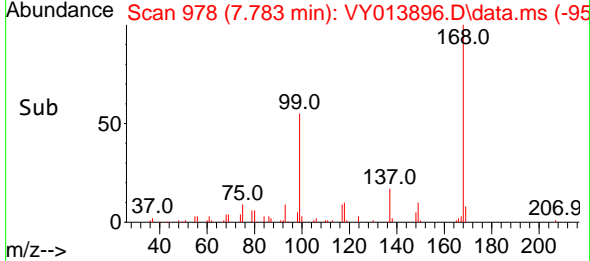
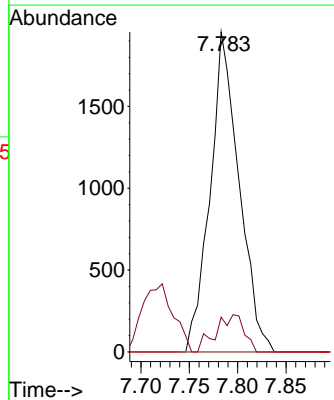
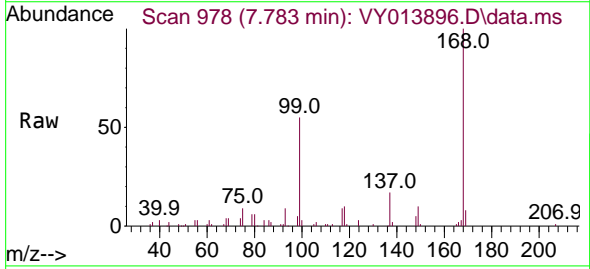


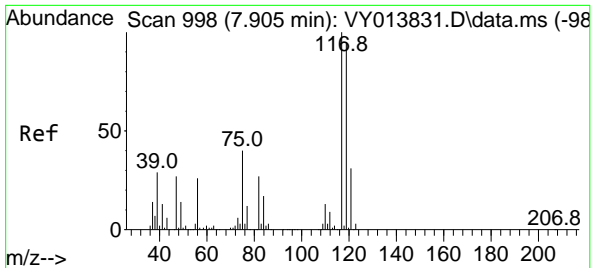
Tgt Ion:113 Resp: 29165
 Ion Ratio Lower Upper
 113 100
 111 103.6 80.4 120.6
 192 22.4 16.6 25.0



#36
 1,1-Dichloropropene
 Concen: 4.910 ug/l
 RT: 7.783 min Scan# 978
 Delta R.T. -0.140 min
 Lab File: VY013896.D
 Acq: 26 May 2023 16:23

Tgt Ion: 75 Resp: 4067
 Ion Ratio Lower Upper
 75 100
 110 11.4 17.5 52.6#
 77 0.0 24.4 36.6#



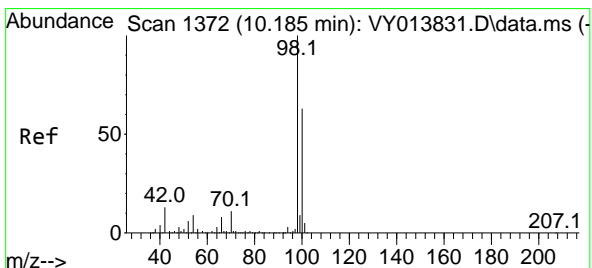
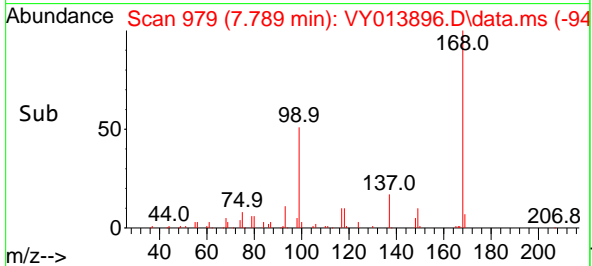
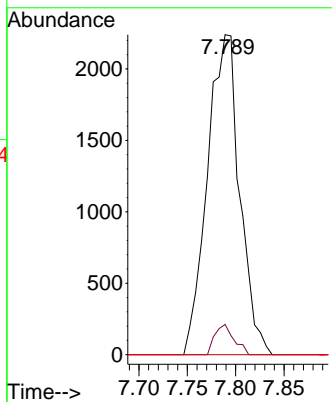
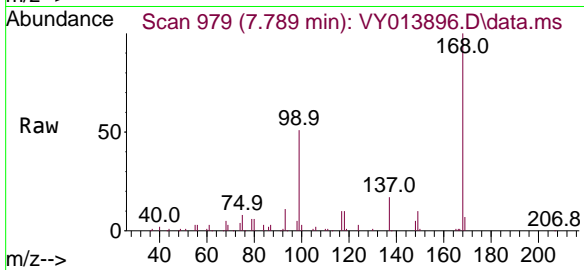


#38
 Carbon Tetrachloride
 Concen: 5.517 ug/l
 RT: 7.789 min Scan# 91
 Delta R.T. -0.116 min
 Lab File: VY013896.D
 Acq: 26 May 2023 16:23

Instrument : MSVOA_Y
 ClientSampleId : 280608RE

Tgt Ion: 117 Resp: 5197

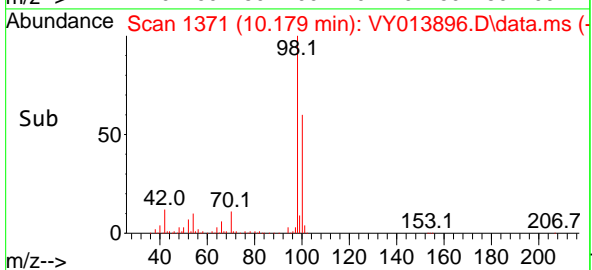
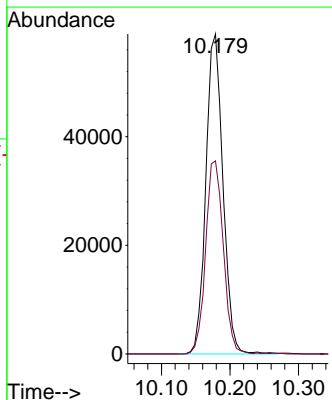
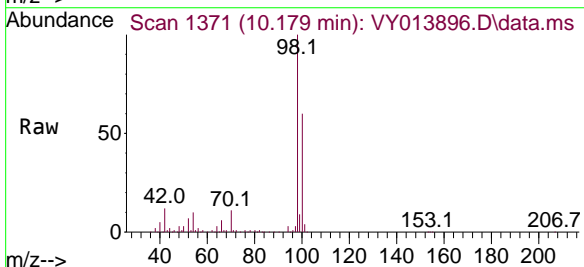
Ion	Ratio	Lower	Upper
117	100		
119	9.5	75.6	113.4#
121	0.0	24.8	37.2#

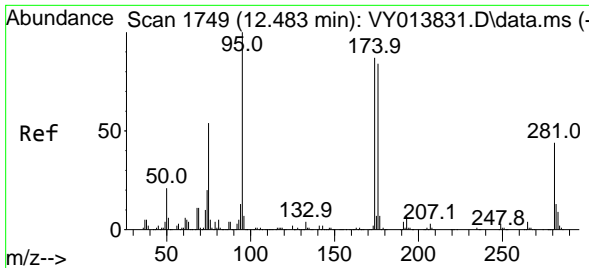


#50
 Toluene-d8
 Concen: 49.398 ug/l
 RT: 10.179 min Scan# 1371
 Delta R.T. -0.006 min
 Lab File: VY013896.D
 Acq: 26 May 2023 16:23

Tgt Ion: 98 Resp: 102108

Ion	Ratio	Lower	Upper
98	100		
100	62.3	50.8	76.2



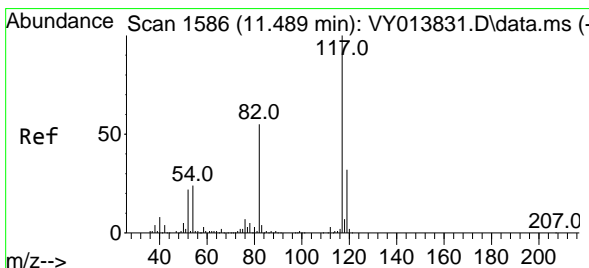
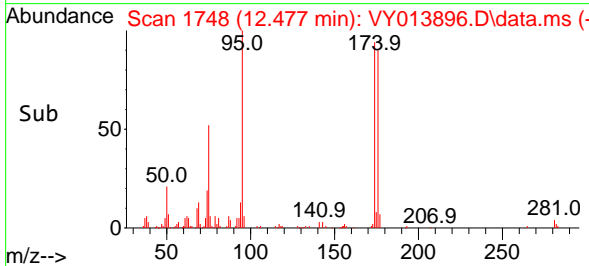
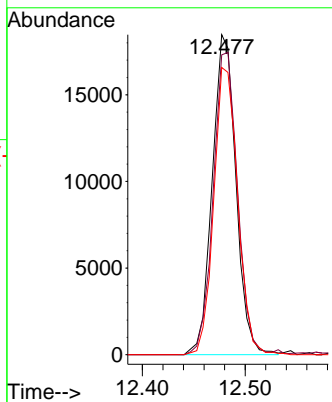
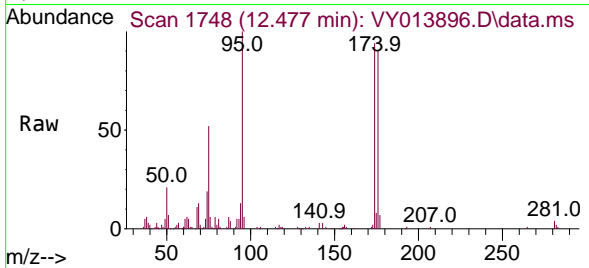


#62
 4-Bromofluorobenzene
 Concen: 42.947 ug/l
 RT: 12.477 min Scan# 11
 Delta R.T. -0.006 min
 Lab File: VY013896.D
 Acq: 26 May 2023 16:23

Instrument : MSVOA_Y
 ClientSampleId : 280608RE

Tgt Ion: 95 Resp: 29508

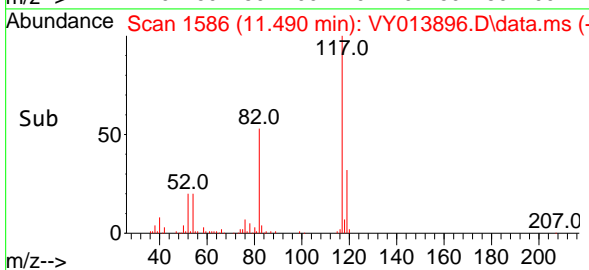
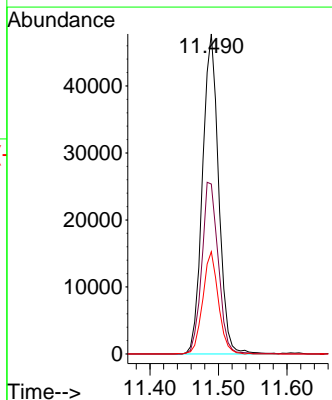
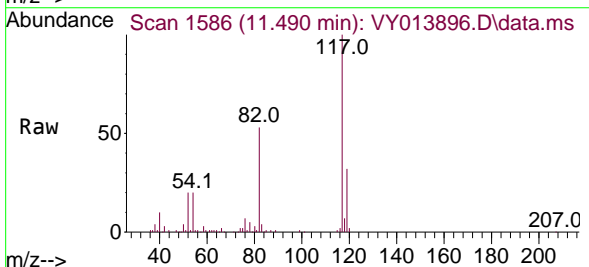
Ion	Ratio	Lower	Upper
95	100		
174	96.9	0.0	176.0
176	90.8	0.0	170.2

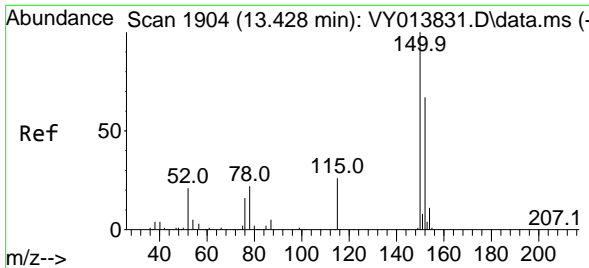


#63
 Chlorobenzene-d5
 Concen: 50.000 ug/l
 RT: 11.490 min Scan# 1586
 Delta R.T. 0.000 min
 Lab File: VY013896.D
 Acq: 26 May 2023 16:23

Tgt Ion: 117 Resp: 78235

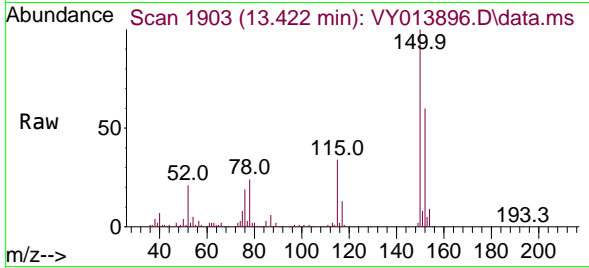
Ion	Ratio	Lower	Upper
117	100		
82	53.1	44.2	66.4
119	31.9	25.7	38.5



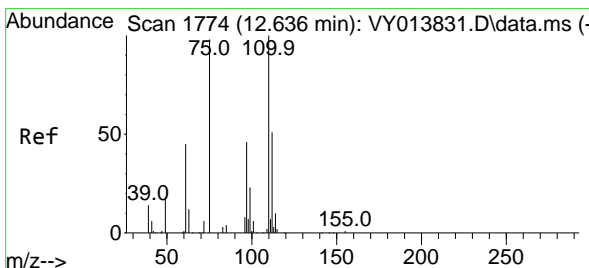
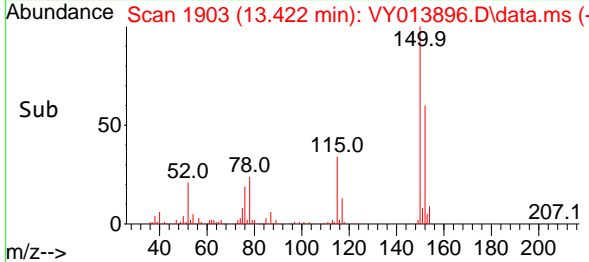
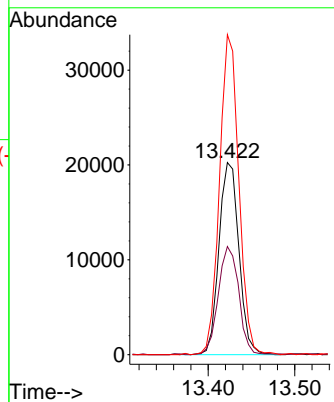


#72
 1,4-Dichlorobenzene-d4
 Concen: 50.000 ug/l
 RT: 13.422 min Scan# 1903
 Delta R.T. -0.006 min
 Lab File: VY013896.D
 Acq: 26 May 2023 16:23

Instrument : MSVOA_Y
 ClientSampleId : 280608RE

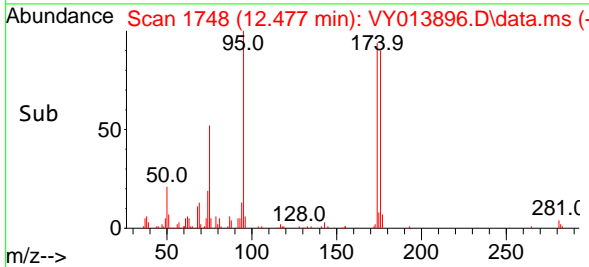
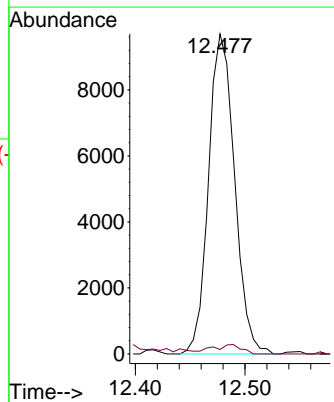
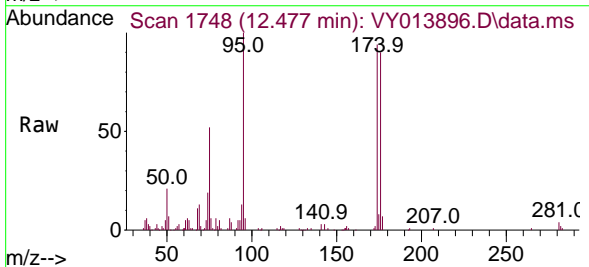


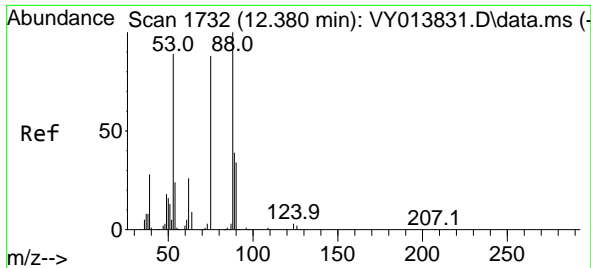
Tgt Ion:152 Resp: 32412
 Ion Ratio Lower Upper
 152 100
 115 57.9 28.8 86.5
 150 161.2 0.0 353.4



#76
 1,2,3-Trichloropropane
 Concen: 41.886 ug/l
 RT: 12.477 min Scan# 1748
 Delta R.T. -0.158 min
 Lab File: VY013896.D
 Acq: 26 May 2023 16:23

Tgt Ion: 75 Resp: 16008
 Ion Ratio Lower Upper
 75 100
 77 3.3 0.0 0.0#

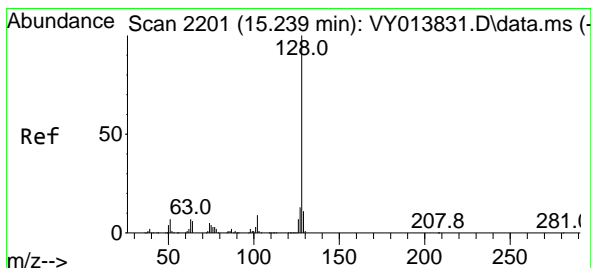
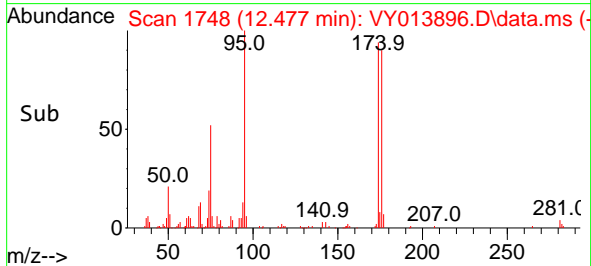
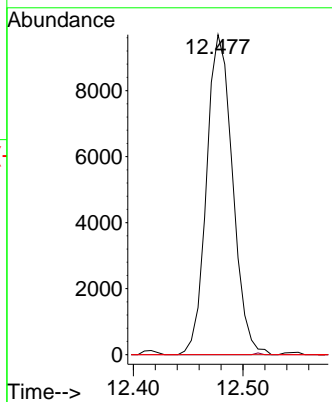
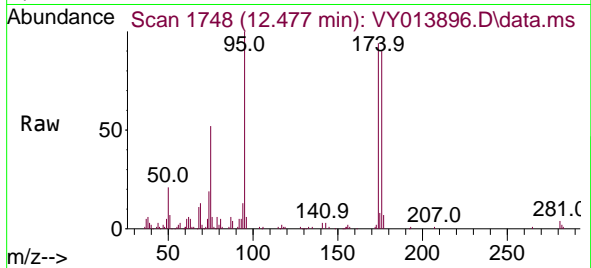




#81
 trans-1,4-Dichloro-2-butene
 Concen: 90.921 ug/l
 RT: 12.477 min Scan# 11
 Delta R.T. 0.098 min
 Lab File: VY013896.D
 Acq: 26 May 2023 16:23

Instrument : MSVOA_Y
 ClientSampleId : 280608RE

Tgt Ion	Resp	Lower	Upper
75	16008		
75	100		
53	0.0	79.7	119.5#
89	0.0	36.4	54.6#



#95
 Naphthalene
 Concen: 7.691 ug/l
 RT: 15.233 min Scan# 2200
 Delta R.T. -0.006 min
 Lab File: VY013896.D
 Acq: 26 May 2023 16:23

Tgt Ion	Resp	Lower	Upper
128	4781		
128	100		
127	15.2	10.7	16.1
129	12.7	9.0	13.4

