

Data Path : Z:\VOASRV\HPCHEM1\MSVOA Y\DATA\VY072120\
 Data File : VY003270.D
 Acq On : 21 Jul 2020 23:38
 Operator : SY/MD
 Sample : L3366-03
 Misc : 7.10G/5ML/MSVOA Y/SOIL
 ALS Vial : 20 Sample Multiplier: 1

Instrument :
 MSVOA_Y
 ClientSampleId :
 SP-1A

Integration Parameters: RTEINT.P
 Integrator: RTE
 Smoothing : ON Filtering: 5
 Sampling : 1 Min Area: 3 % of largest Peak
 Start Thrs: 0.2 Max Peaks: 100
 Stop Thrs : 0 Peak Location: TOP

If leading or trailing edge < 100 prefer < Baseline drop else tangent >
 Peak separation: 5

Method : Z:\VOASRV\HPCHEM1\MSVOA_Y\METHODS\82Y071020S.M
 Title : SW846 8260

Signal : TIC

peak #	R.T. min	first scan	max scan	last scan	PK TY	peak height	corr. area	corr. % max.	% of total
1	4.724	478	490	502	rBV3	15649	49901	2.37%	0.442%
2	7.724	969	982	988	rBV	305764	724518	34.36%	6.424%
3	7.797	988	994	1010	rVB	520099	1159889	55.01%	10.284%
4	8.144	1042	1051	1062	rBV	287902	634673	30.10%	5.627%
5	8.693	1132	1141	1153	rBV	781454	1514890	71.84%	13.431%
6	10.181	1377	1385	1394	rBV	1243337	2108673	100.00%	18.696%
7	11.491	1591	1600	1609	rBV	1113748	1831318	86.85%	16.237%
8	12.479	1755	1762	1773	rBV	926972	1428569	67.75%	12.666%
9	13.424	1909	1917	1924	rBV	1215535	1826263	86.61%	16.192%

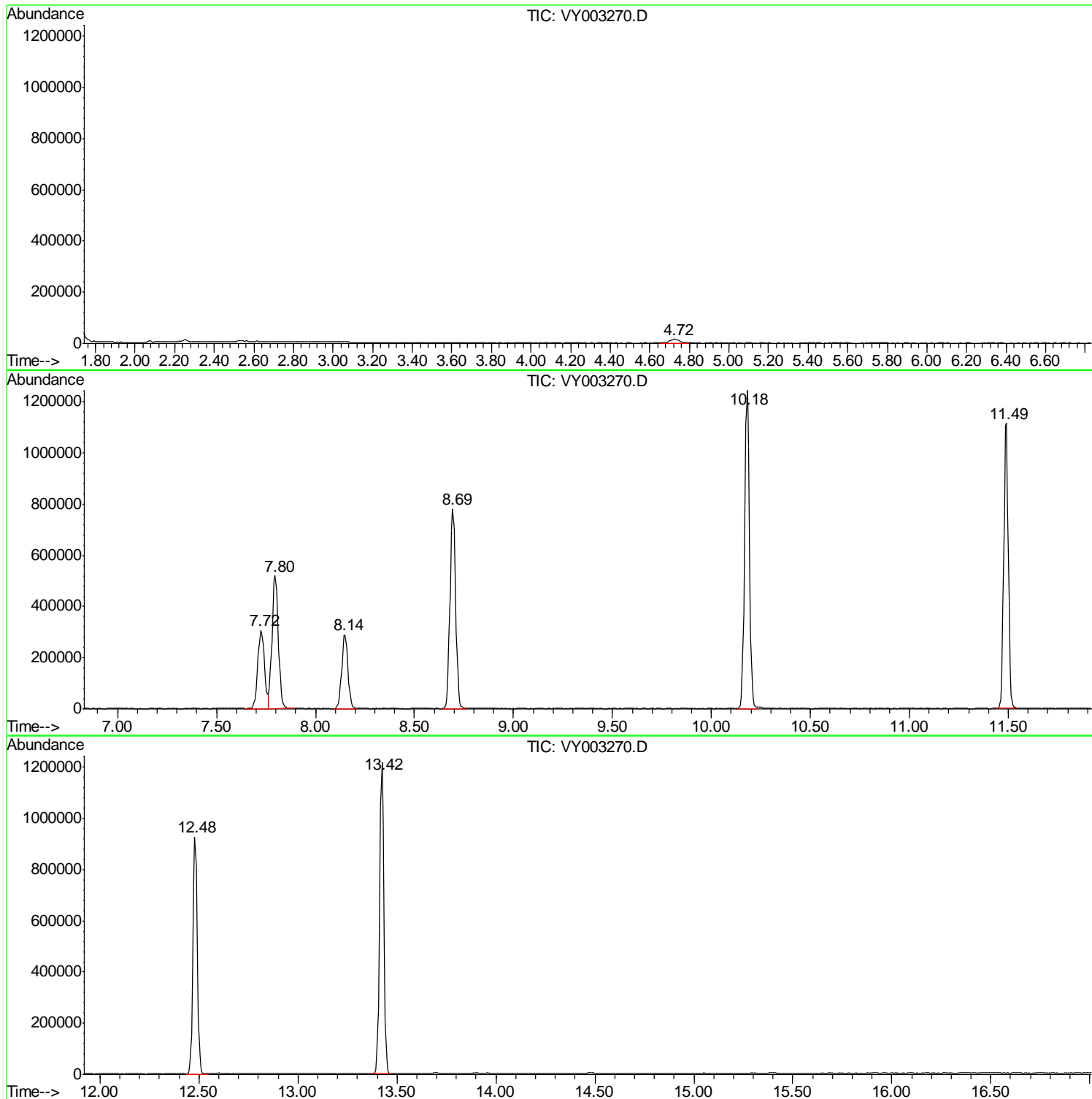
Sum of corrected areas: 11278694

Data Path : Z:\VOASRV\HPCHEM1\MSVOA Y\DATA\VY072120\
Data File : VY003270.D
Acq On : 21 Jul 2020 23:38
Operator : SY/MD
Sample : L3366-03
Misc : 7.10G/5ML/MSVOA Y/SOIL
ALS Vial : 20 Sample Multiplier: 1

Instrument :
MSVOA_Y
ClientSampled :
SP-1A

Quant Method : Z:\VOASRV\HPCHEM1\MSVOA_Y\METHODS\82Y071020S.M
Quant Title : SW846 8260

TIC Library : C:\DATABASE\NIST11.L
TIC Integration Parameters: LSCINT.P



Data Path : Z:\VOASRV\HPCHEM1\MSVOA_Y\DATA\VY072120\
Data File : VY003270.D
Acq On : 21 Jul 2020 23:38
Operator : SY/MD
Sample : L3366-03
Misc : 7.10G/5ML/MSVOA_Y/SOIL
ALS Vial : 20 Sample Multiplier: 1

Instrument :
MSVOA_Y
ClientSampleId :
SP-1A

Quant Method : Z:\VOASRV\HPCHEM1\MSVOA_Y\METHODS\82Y071020S.M
Quant Title : SW846 8260

TIC Library : C:\DATABASE\NIST11.L
TIC Integration Parameters: LSCINT.P

No Library Search Compounds Detected

Data Path : Z:\VOASRV\HPCHEM1\MSVOA_Y\DATA\VY072120\
Data File : VY003270.D
Acq On : 21 Jul 2020 23:38
Operator : SY/MD
Sample : L3366-03
Misc : 7.10G/5ML/MSVOA_Y/SOIL
ALS Vial : 20 Sample Multiplier: 1

Instrument :
MSVOA_Y
ClientSampleId :
SP-1A

Quant Method : Z:\VOASRV\HPCHEM1\MSVOA_Y\METHODS\82Y071020S.M
Quant Title : SW846 8260

TIC Library : C:\DATABASE\NIST11.L
TIC Integration Parameters: LSCINT.P

TIC Top Hit name	RT	EstConc	Units	Response	--Internal Standard--			
					#	RT	Resp	Conc
