

Data Path : Z:\VOASRV\HPCHEM1\MSVOA Y\DATA\VY072220\
 Data File : VY003286.D
 Acq On : 22 Jul 2020 14:21
 Operator : SY/MD
 Sample : L3344-10
 Misc : 8.21G/5ML/MSVOA Y/SOIL
 ALS Vial : 10 Sample Multiplier: 1

Instrument :
 MSVOA_Y
 ClientSampleId :
 TP-14-D2

Quant Time: Jul 23 06:08:20 2020
 Quant Method : Z:\VOASRV\HPCHEM1\MSVOA_Y\METHODS\82Y071020S.M
 Quant Title : SW846 8260
 QLast Update : Fri Jul 10 13:18:03 2020
 Response via : Initial Calibration

Internal Standards	R.T.	QIon	Response	Conc	Units	Dev(Min)
1) Pentafluorobenzene	7.80	168	394609	50.00	ug/l	0.00
34) 1,4-Difluorobenzene	8.69	114	615221	50.00	ug/l	0.00
63) Chlorobenzene-d5	11.49	117	567071	50.00	ug/l	0.00
72) 1,4-Dichlorobenzene-d4	13.42	152	274306	50.00	ug/l	0.00

System Monitoring Compounds

33) 1,2-Dichloroethane-d4	8.14	65	198337	59.55	ug/l	0.00
Spiked Amount				50.000		
			Recovery	=	119.10%	
35) Dibromofluoromethane	7.72	113	190808	53.89	ug/l	0.00
Spiked Amount				50.000		
			Recovery	=	107.78%	
50) Toluene-d8	10.18	98	753838	57.27	ug/l	0.00
Spiked Amount				50.000		
			Recovery	=	114.54%	
62) 4-Bromofluorobenzene	12.48	95	238908	50.24	ug/l	0.00
Spiked Amount				50.000		
			Recovery	=	100.48%	

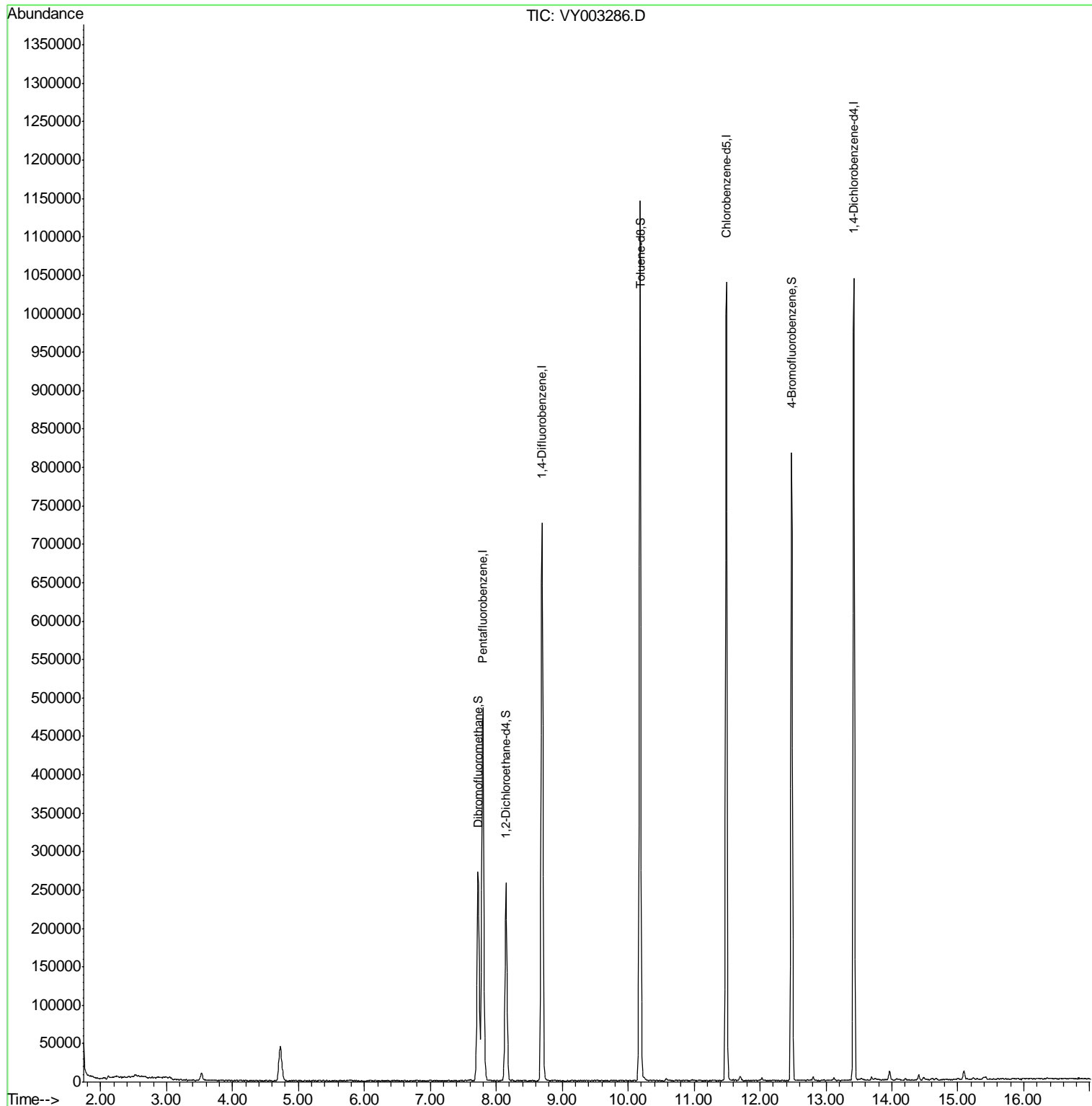
Target Compounds Qvalue

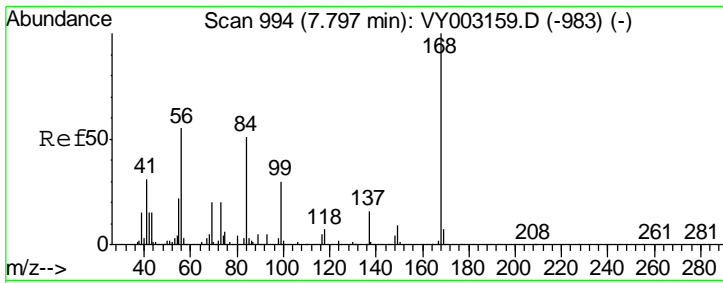
(#) = qualifier out of range (m) = manual integration (+) = signals summed

Data Path : Z:\VOASRV\HPCHEM1\MSVOA Y\DATA\VY072220\
 Data File : VY003286.D
 Acq On : 22 Jul 2020 14:21
 Operator : SY/MD
 Sample : L3344-10
 Misc : 8.21G/5ML/MSVOA Y/SOIL
 ALS Vial : 10 Sample Multiplier: 1

Instrument :
 MSVOA_Y
 ClientSampleId :
 TP-14-D2

Quant Time: Jul 23 06:08:20 2020
 Quant Method : Z:\VOASRV\HPCHEM1\MSVOA_Y\METHODS\82Y071020S.M
 Quant Title : SW846 8260
 QLast Update : Fri Jul 10 13:18:03 2020
 Response via : Initial Calibration

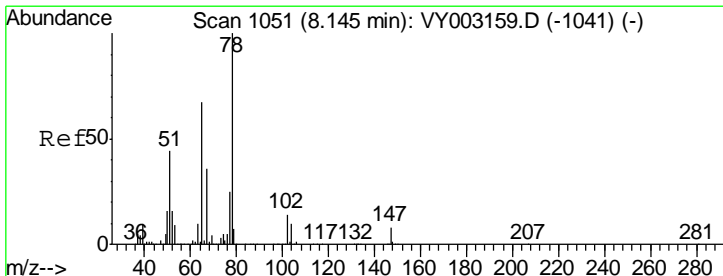
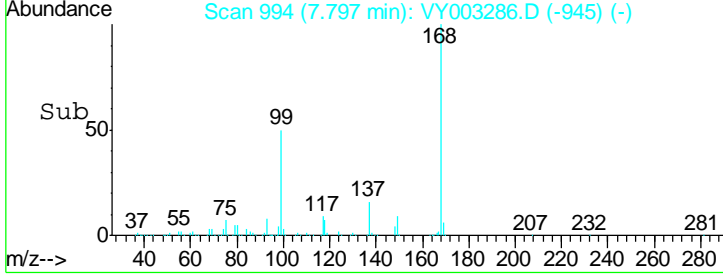
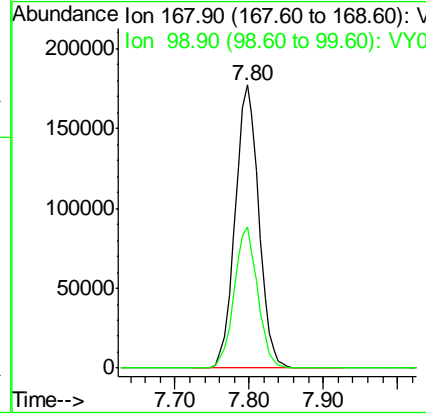
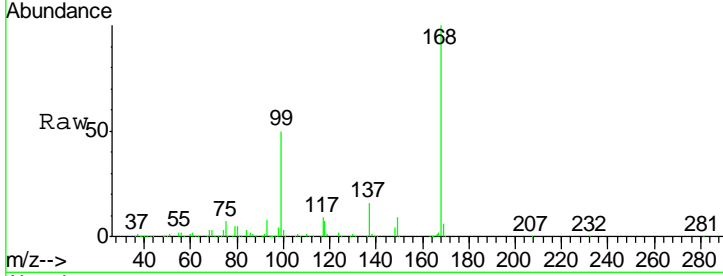




#1
 Pentafluorobenzene
 Concen: 50.000 ug/l
 RT: 7.80 min Scan# 994
 Delta R.T. 0.00 min
 Lab File: VY003286.D
 Acq: 22 Jul 2020 14:21

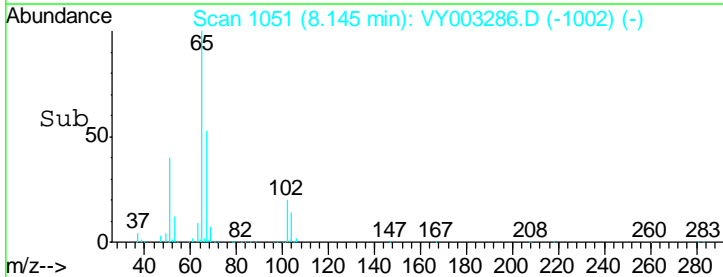
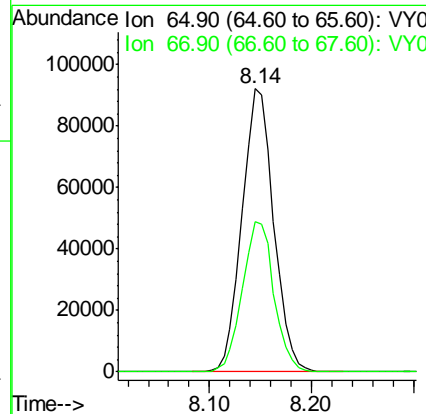
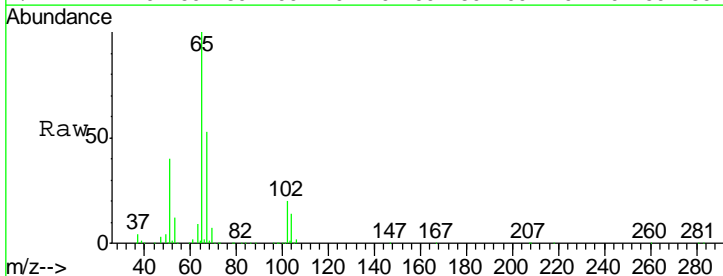
Instrument :
 MSVOA_Y
ClientSampled :
 TP-14-D2

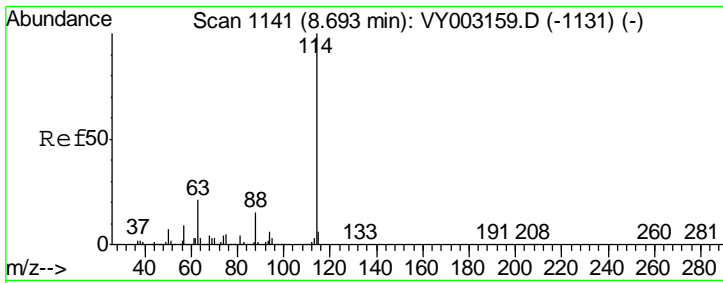
Tgt Ion	Resp	Lower	Upper
168	100		
99	49.7	37.3	55.9



#33
 1,2-Dichloroethane-d4
 Concen: 59.549 ug/l
 RT: 8.14 min Scan# 1051
 Delta R.T. 0.00 min
 Lab File: VY003286.D
 Acq: 22 Jul 2020 14:21

Tgt Ion	Resp	Lower	Upper
65	100		
67	53.0	0.0	105.2

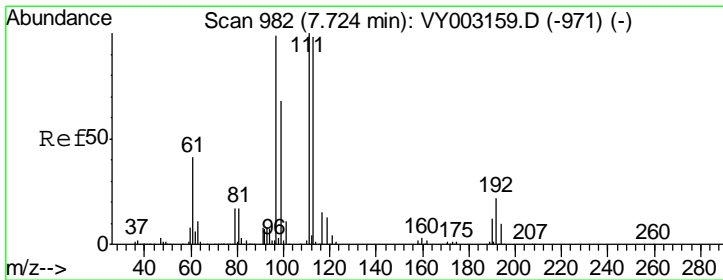
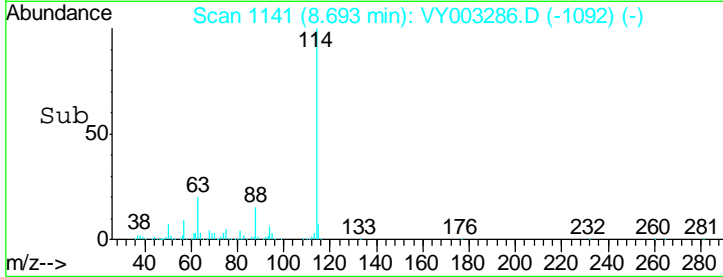
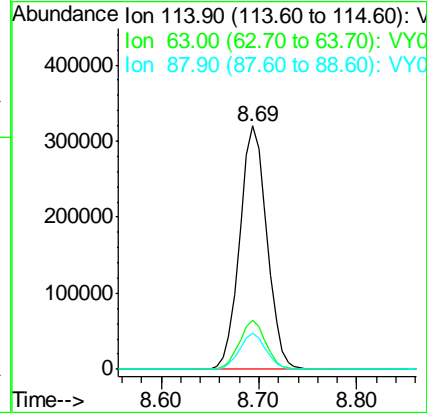
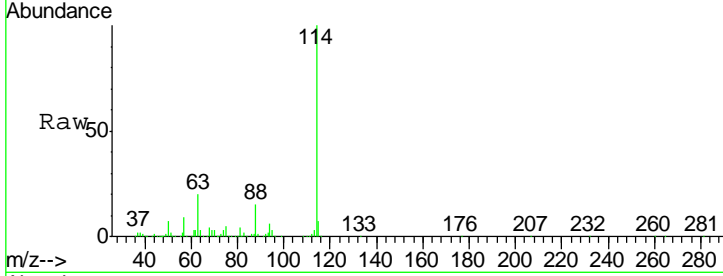




#34
 1,4-Difluorobenzene
 Concen: 50.000 ug/l
 RT: 8.69 min Scan# 1141
 Delta R.T. 0.00 min
 Lab File: VY003286.D
 Acq: 22 Jul 2020 14:21

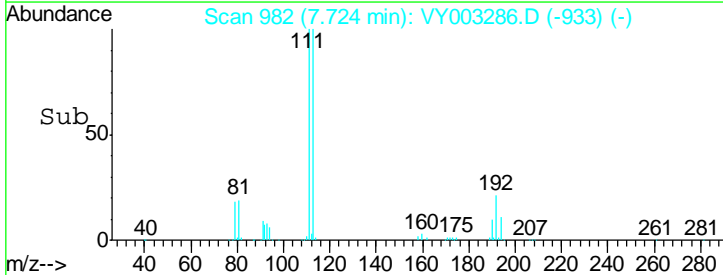
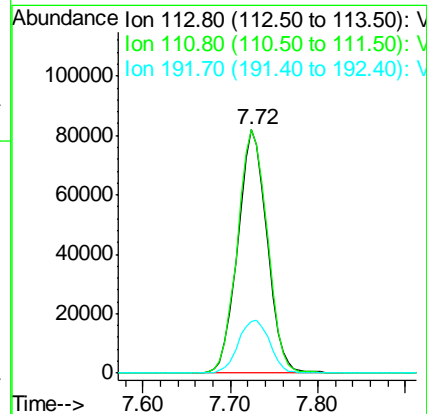
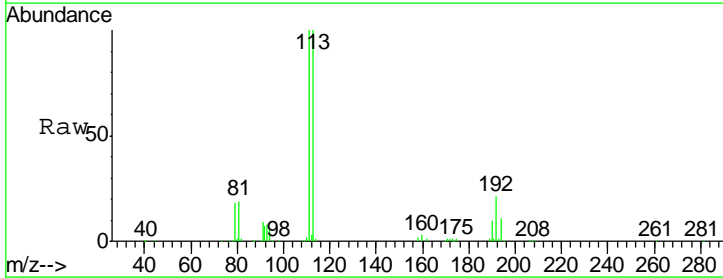
Instrument :
 MSVOA_Y
 ClientSampled :
 TP-14-D2

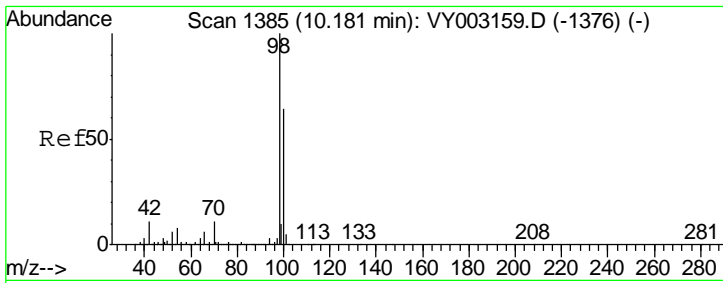
Tgt Ion	Resp	Lower	Upper
114	100		
63	20.0	0.0	41.2
88	14.7	0.0	30.2



#35
 Dibromofluoromethane
 Concen: 53.894 ug/l
 RT: 7.72 min Scan# 982
 Delta R.T. 0.00 min
 Lab File: VY003286.D
 Acq: 22 Jul 2020 14:21

Tgt Ion	Resp	Lower	Upper
113	100		
111	102.3	82.1	123.1
192	23.3	18.8	28.2

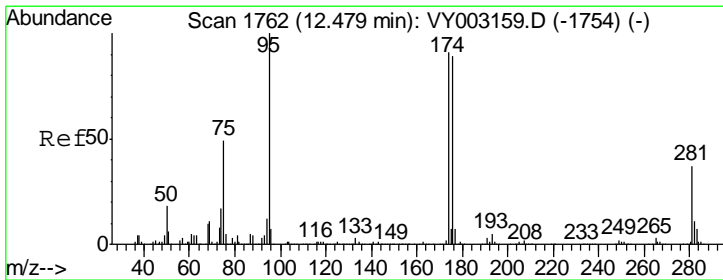
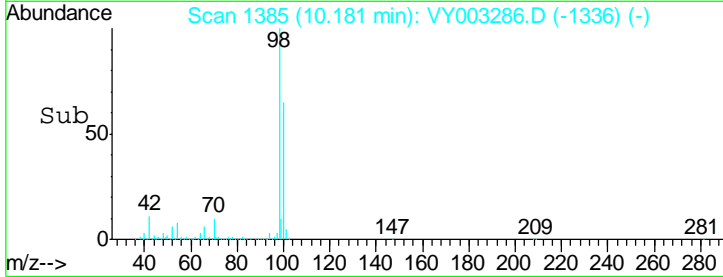
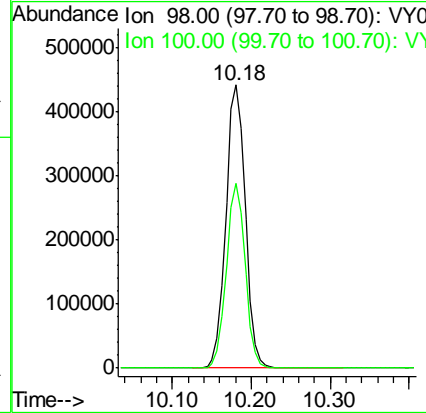
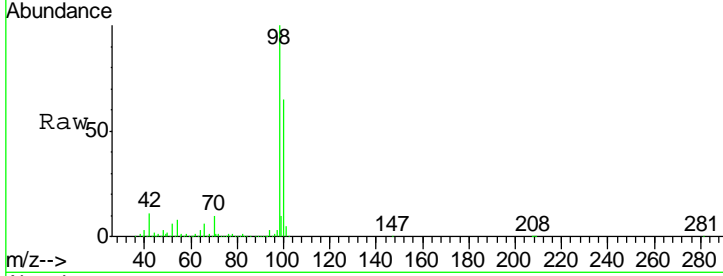




#50
 Toluene-d8
 Concen: 57.270 ug/l
 RT: 10.18 min Scan# 1385
 Delta R.T. 0.00 min
 Lab File: VY003286.D
 Acq: 22 Jul 2020 14:21

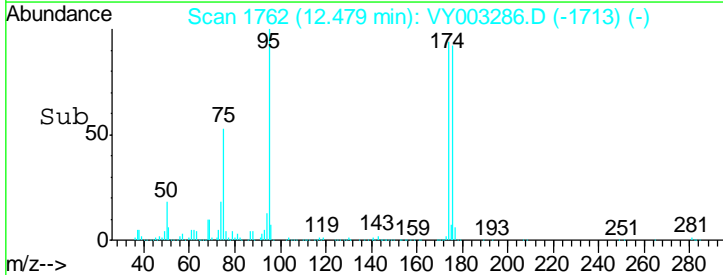
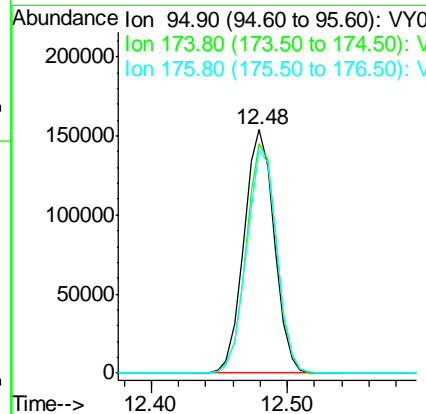
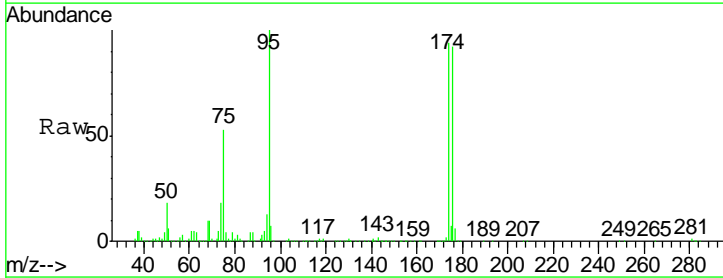
Instrument :
 MSVOA_Y
 ClientSampled :
 TP-14-D2

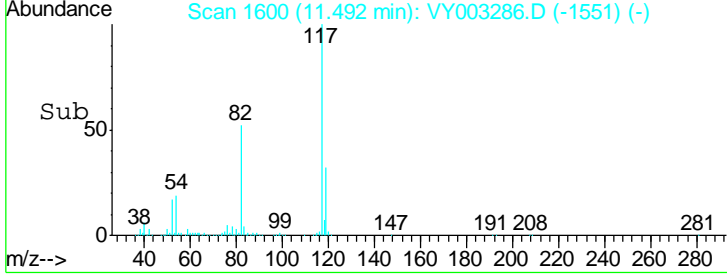
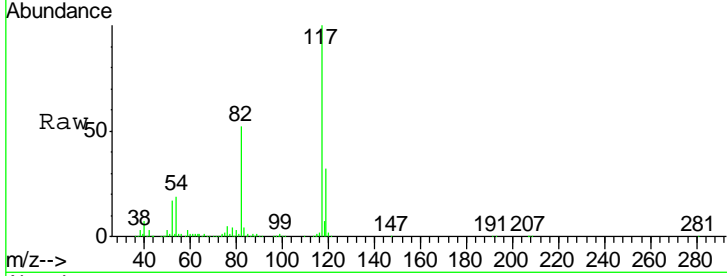
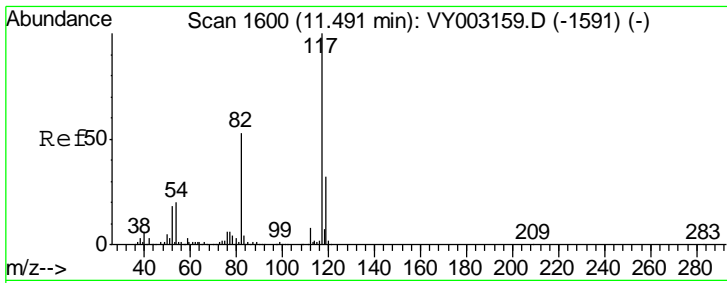
Tgt Ion: 98 Resp: 753838
 Ion Ratio Lower Upper
 98 100
 100 63.4 50.7 76.1



#62
 4-Bromofluorobenzene
 Concen: 50.241 ug/l
 RT: 12.48 min Scan# 1762
 Delta R.T. 0.00 min
 Lab File: VY003286.D
 Acq: 22 Jul 2020 14:21

Tgt Ion: 95 Resp: 238908
 Ion Ratio Lower Upper
 95 100
 174 94.4 0.0 190.6
 176 92.0 0.0 186.4

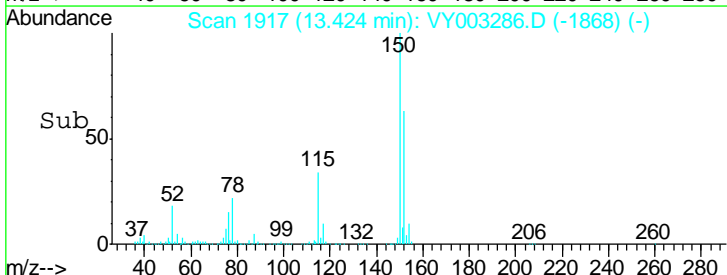
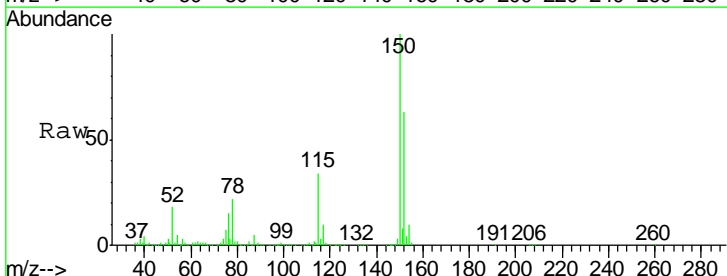
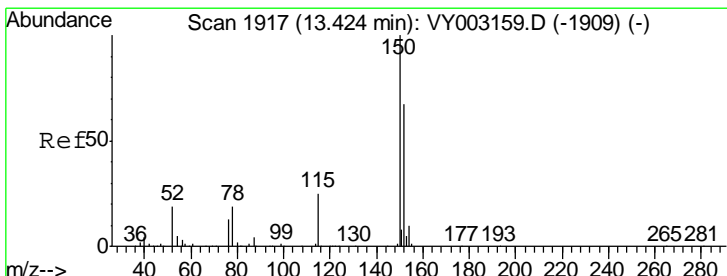
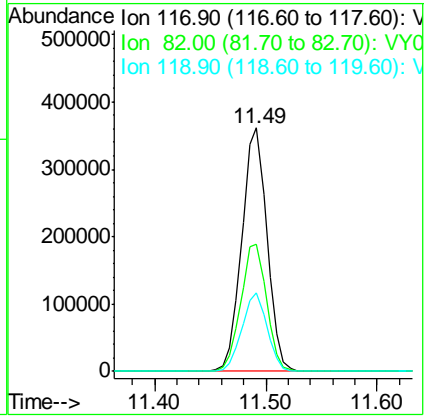




#63
 Chlorobenzene-d5
 Concen: 50.000 ug/l
 RT: 11.49 min Scan# 1600
 Delta R.T. 0.00 min
 Lab File: VY003286.D
 Acq: 22 Jul 2020 14:21

Instrument : MSVOA_Y
 ClientSampled : TP-14-D2

Tgt Ion	Resp	Lower	Upper
117	567071		
82	52.1	42.0	63.0
119	32.2	25.5	38.3



#72
 1,4-Dichlorobenzene-d4
 Concen: 50.000 ug/l
 RT: 13.42 min Scan# 1917
 Delta R.T. 0.00 min
 Lab File: VY003286.D
 Acq: 22 Jul 2020 14:21

Tgt Ion	Resp	Lower	Upper
152	274306		
115	54.6	26.9	80.7
150	156.5	0.0	338.0

