

Data Path : Z:\voasrv\HPCHEM1\MSVOA_Y\Data\VY091622\
 Data File : VY010530.D
 Acq On : 16 Sep 2022 12:55
 Operator : KP/MD
 Sample : N4509-06
 Misc : 5.37g/5.0mL/MSVOA_Y/SOIL
 ALS Vial : 9 Sample Multiplier: 1

Instrument :
 MSVOA_Y
 ClientSampleId :
 S1-SO_PW001-20220902

Integration Parameters: RTEINT.P

Integrator: RTE
 Smoothing : ON Filtering: 5
 Sampling : 1 Min Area: 3 % of largest Peak
 Start Thrs: 0.2 Max Peaks: 100
 Stop Thrs : 0 Peak Location: TOP

If leading or trailing edge < 100 prefer < Baseline drop else tangent >
 Peak separation: 5

Method : Z:\voasrv\HPCHEM1\MSVOA_Y\methods\82Y090922S.M
 Title : SW846 8260

Signal : TIC: VY010530.D\data.ms

peak #	R.T. min	first scan	max scan	last scan	PK TY	peak height	corr. area	corr. % max.	% of total
1	4.710	464	474	493	rBV2	24382	78658	8.21%	1.343%
2	4.918	498	508	521	rBV3	2971	10980	1.15%	0.187%
3	5.741	633	643	655	rVB4	5337	17297	1.80%	0.295%
4	6.972	834	845	860	rBV	36988	114612	11.96%	1.957%
5	7.716	957	967	972	rBV	149473	349668	36.48%	5.970%
6	7.789	972	979	993	rVB	247648	572201	59.70%	9.769%
7	8.130	1021	1035	1048	rBV2	177379	549076	57.29%	9.375%
8	8.685	1118	1126	1138	rBV	366693	721070	75.23%	12.311%
9	10.179	1363	1371	1379	rBV	564920	958476	100.00%	16.365%
10	10.581	1429	1437	1444	rBV2	22611	41146	4.29%	0.703%
11	10.947	1489	1497	1503	rBV2	14576	26659	2.78%	0.455%
12	11.319	1553	1558	1566	rVB	15861	25518	2.66%	0.436%
13	11.490	1578	1586	1596	rBV	513454	831598	86.76%	14.198%
14	12.483	1742	1749	1757	rBV2	442172	709205	73.99%	12.109%
15	12.813	1797	1803	1809	rBV5	7852	13229	1.38%	0.226%
16	13.422	1897	1903	1912	rVB	535704	821642	85.72%	14.028%
17	13.965	1983	1992	1997	rBV	9807	15983	1.67%	0.273%

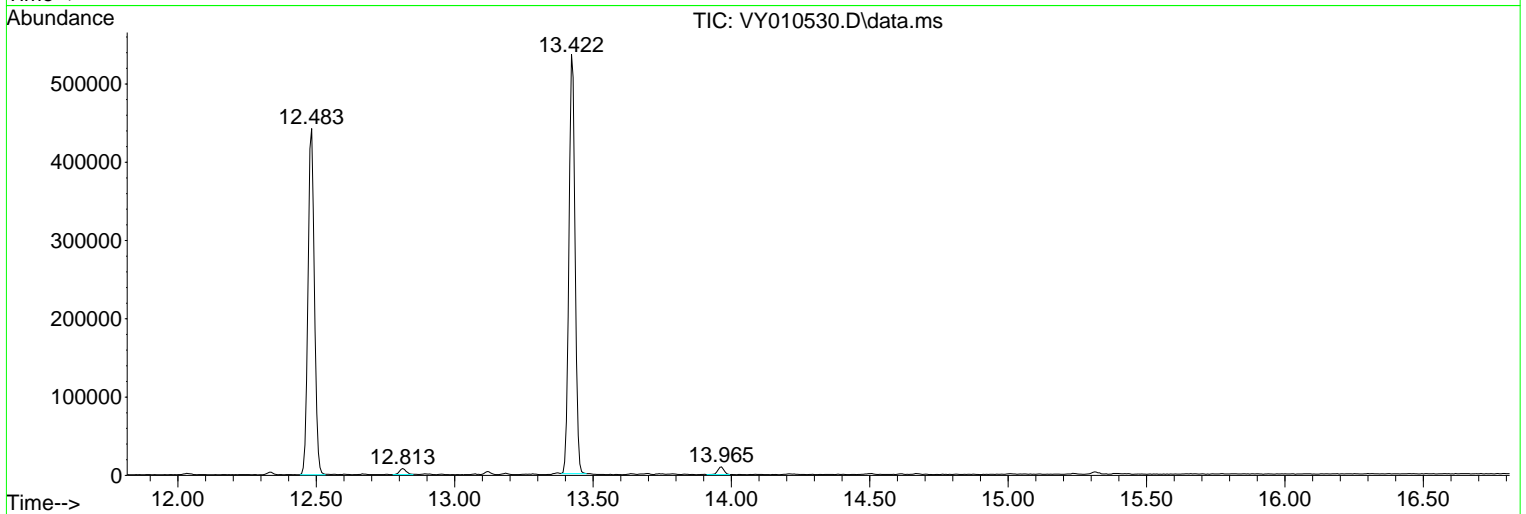
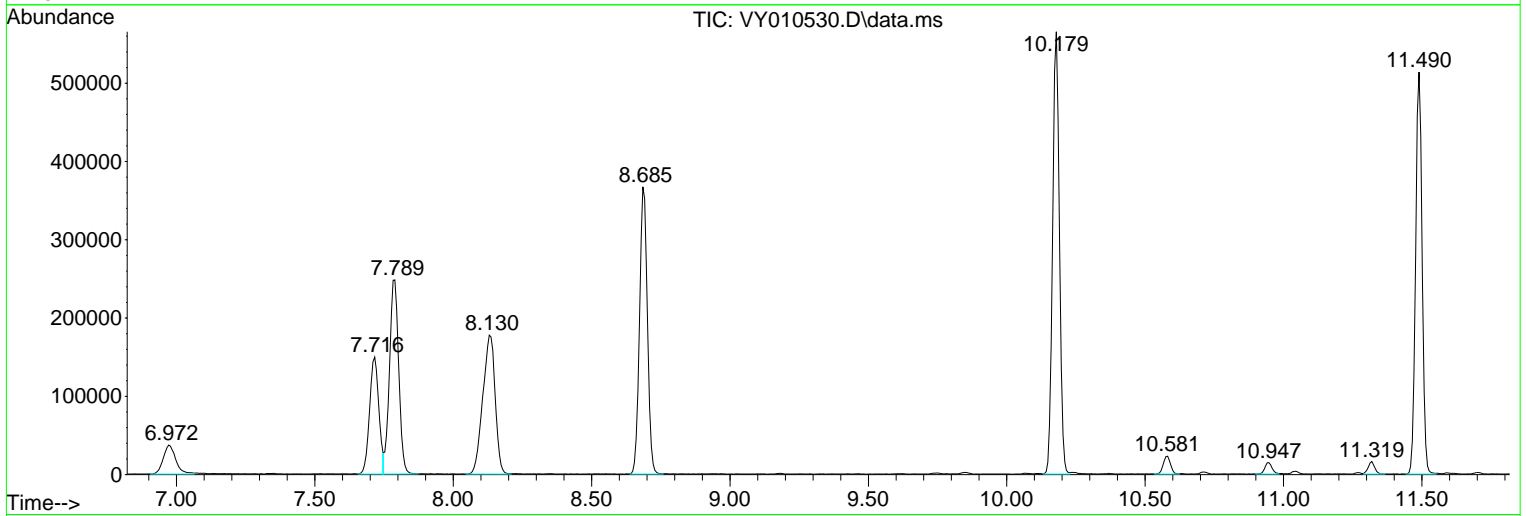
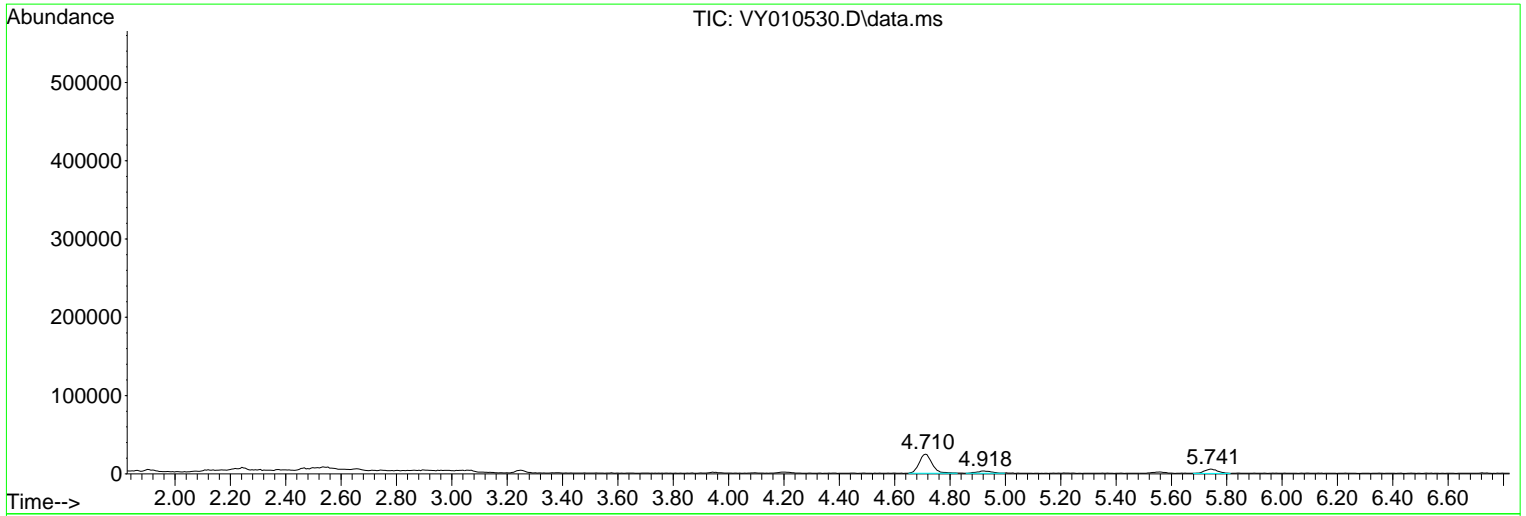
Sum of corrected areas: 5857018

Data Path : Z:\voasrv\HPCHEM1\MSVOA_Y\Data\VY091622\
 Data File : VY010530.D
 Acq On : 16 Sep 2022 12:55
 Operator : KP/MD
 Sample : N4509-06
 Misc : 5.37g/5.0mL/MSVOA_Y/SOIL
 ALS Vial : 9 Sample Multiplier: 1

Instrument :
 MSVOA_Y
ClientSampleId :
 S1-SO_PW001-20220902

Quant Method : Z:\voasrv\HPCHEM1\MSVOA_Y\methods\82Y090922S.M
 Quant Title : SW846 8260

TIC Library : C:\Database\NIST20.L
 TIC Integration Parameters: LSCINT.P



Library Search Compound Report

Data Path : Z:\voasrv\HPCHEM1\MSVOA_Y\Data\VY091622\
Data File : VY010530.D
Acq On : 16 Sep 2022 12:55
Operator : KP/MD
Sample : N4509-06
Misc : 5.37g/5.0mL/MSVOA_Y/SOIL
ALS Vial : 9 Sample Multiplier: 1

Instrument :
MSVOA_Y
ClientSampleId :
S1-SO_PW001-20220902

Quant Method : Z:\voasrv\HPCHEM1\MSVOA_Y\methods\82Y090922S.M
Quant Title : SW846 8260

TIC Library : C:\Database\NIST20.L
TIC Integration Parameters: LSCINT.P

No Library Search Compounds Detected

Data Path : Z:\voasrv\HPCHEM1\MSVOA_Y\Data\VY091622\
Data File : VY010530.D
Acq On : 16 Sep 2022 12:55
Operator : KP/MD
Sample : N4509-06
Misc : 5.37g/5.0mL/MSVOA_Y/SOIL
ALS Vial : 9 Sample Multiplier: 1

Instrument :
MSVOA_Y
ClientSampleId :
S1-SO_PW001-20220902

Quant Method : Z:\voasrv\HPCHEM1\MSVOA_Y\methods\82Y090922S.M
Quant Title : SW846 8260

TIC Library : C:\Database\NIST20.L
TIC Integration Parameters: LSCINT.P

TIC Top Hit name	RT	EstConc	Units	Response	#	RT	Resp	Conc
------------------	----	---------	-------	----------	---	----	------	------
