

Data Path : Z:\voasrv\HPCHEM1\MSVOA\_Y\Data\VY092822\  
 Data File : VY010722.D  
 Acq On : 28 Sep 2022 17:22  
 Operator : KP/MD  
 Sample : N4812-01RE  
 Misc : 6.07g/5.0mL/MSVOA\_Y/SOIL  
 ALS Vial : 20 Sample Multiplier: 1

Instrument :  
 MSVOA\_Y  
 ClientSampleId :  
 WC-3RE

Quant Time: Sep 29 01:14:28 2022  
 Quant Method : Z:\voasrv\HPCHEM1\MSVOA\_Y\methods\82Y091922S.M  
 Quant Title : SW846 8260  
 QLast Update : Tue Sep 20 01:02:44 2022  
 Response via : Initial Calibration

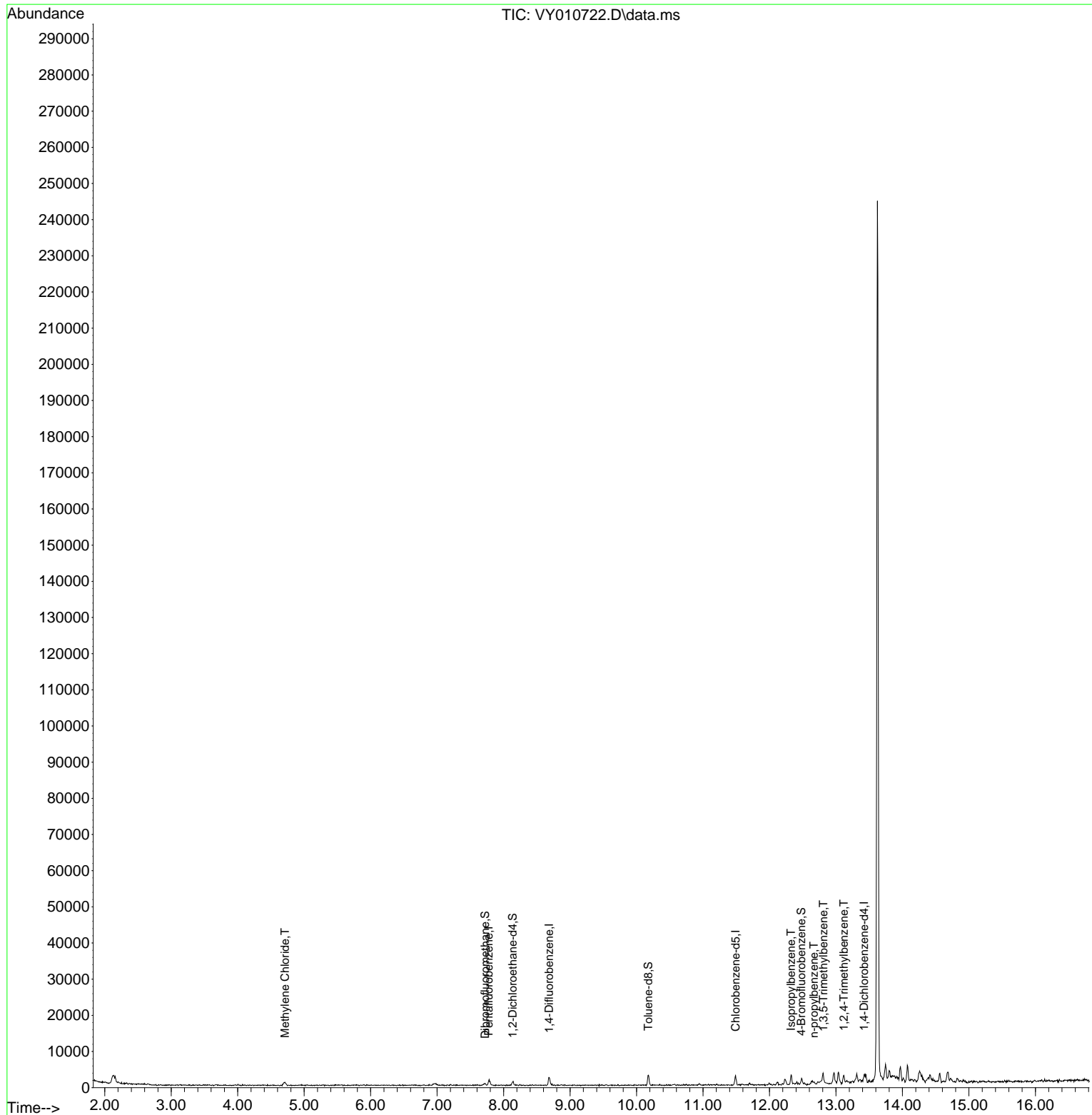
Compound	R.T.	QIon	Response	Conc	Units	Dev(Min)
-----						
Internal Standards						
1) Pentafluorobenzene	7.777	168	1398	50.000	ug/l	0.00
34) 1,4-Difluorobenzene	8.685	114	2462	50.000	ug/l	0.00
63) Chlorobenzene-d5	11.490	117	1724	50.000	ug/l	0.00
72) 1,4-Dichlorobenzene-d4	13.422	152	425	50.000	ug/l	# 0.00
System Monitoring Compounds						
33) 1,2-Dichloroethane-d4	8.136	65	901	67.382	ug/l	0.00
Spiked Amount	50.000	Range	50 - 163	Recovery	=	134.760%
35) Dibromofluoromethane	7.722	113	370	23.548	ug/l	0.01
Spiked Amount	50.000	Range	54 - 147	Recovery	=	47.100%#
50) Toluene-d8	10.179	98	2185	38.400	ug/l	0.00
Spiked Amount	50.000	Range	49 - 140	Recovery	=	76.800%
62) 4-Bromofluorobenzene	12.477	95	566	24.907	ug/l	0.00
Spiked Amount	50.000	Range	25 - 144	Recovery	=	49.820%
Target Compounds						
						Qvalue
20) Methylene Chloride	4.710	84	600	38.623	ug/l	# 76
73) Isopropylbenzene	12.325	105	1631	62.096	ug/l	96
78) n-propylbenzene	12.666	91	885	28.287	ug/l	80
80) 1,3,5-Trimethylbenzene	12.812	105	880	39.652	ug/l	92
84) 1,2,4-Trimethylbenzene	13.117	105	1232	55.878	ug/l	92
-----						

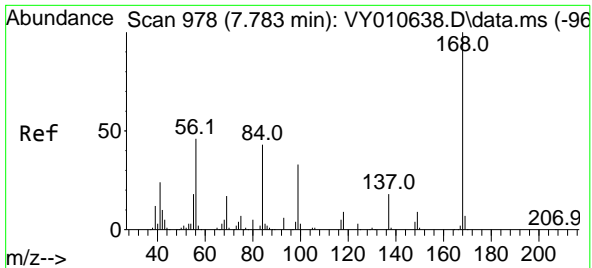
(#) = qualifier out of range (m) = manual integration (+) = signals summed

Data Path : Z:\voasrv\HPCHEM1\MSVOA\_Y\Data\VY092822\  
 Data File : VY010722.D  
 Acq On : 28 Sep 2022 17:22  
 Operator : KP/MD  
 Sample : N4812-01RE  
 Misc : 6.07g/5.0mL/MSVOA\_Y/SOIL  
 ALS Vial : 20 Sample Multiplier: 1

Instrument :  
 MSVOA\_Y  
 ClientSampleId :  
 WC-3RE

Quant Time: Sep 29 01:14:28 2022  
 Quant Method : Z:\voasrv\HPCHEM1\MSVOA\_Y\methods\82Y091922S.M  
 Quant Title : SW846 8260  
 QLast Update : Tue Sep 20 01:02:44 2022  
 Response via : Initial Calibration

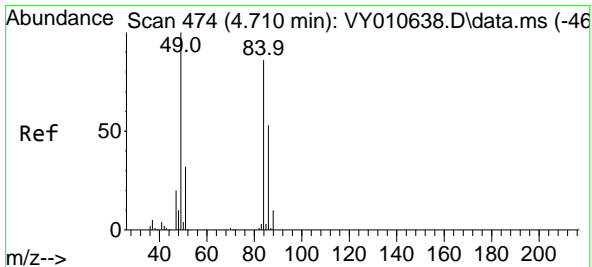
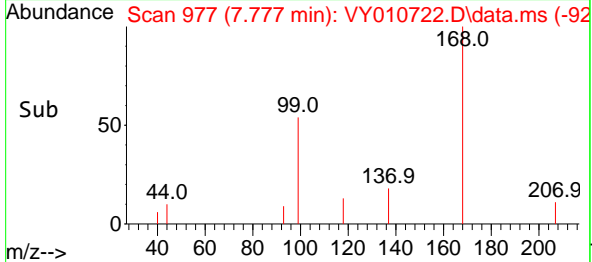
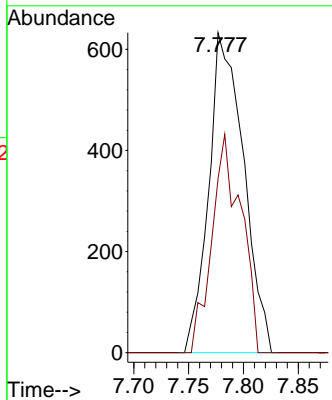
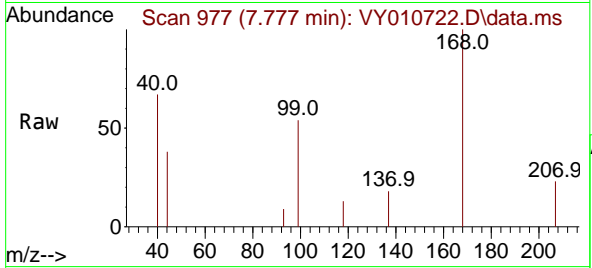




#1  
 Pentafluorobenzene  
 Concen: 50.000 ug/l  
 RT: 7.777 min Scan# 91  
 Delta R.T. -0.006 min  
 Lab File: VY010722.D  
 Acq: 28 Sep 2022 17:22

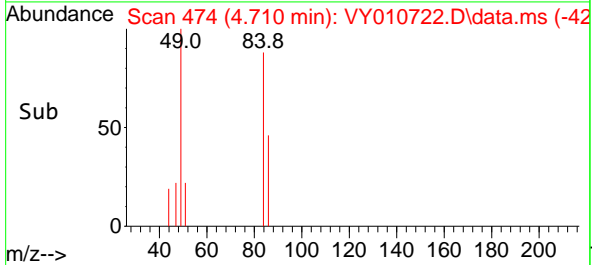
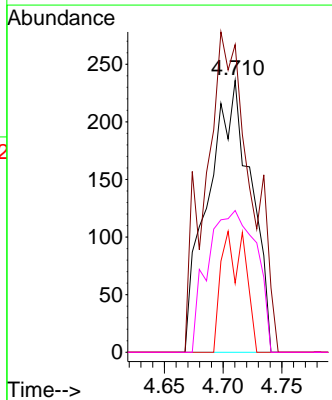
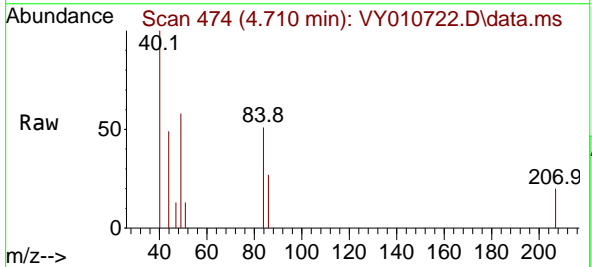
Instrument :  
 MSVOA\_Y  
 ClientSampleId :  
 WC-3RE

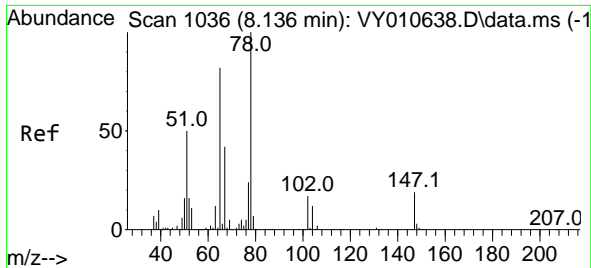
Tgt Ion:168 Resp: 1398  
 Ion Ratio Lower Upper  
 168 100  
 99 54.3 46.9 70.3



#20  
 Methylene Chloride  
 Concen: 38.623 ug/l  
 RT: 4.710 min Scan# 474  
 Delta R.T. 0.000 min  
 Lab File: VY010722.D  
 Acq: 28 Sep 2022 17:22

Tgt Ion: 84 Resp: 600  
 Ion Ratio Lower Upper  
 84 100  
 49 113.1 114.4 171.6#  
 51 25.4 35.3 52.9#  
 86 52.1 53.7 80.5#

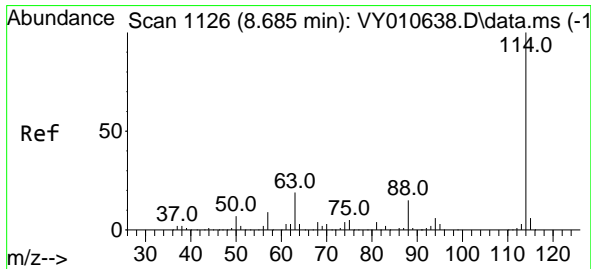
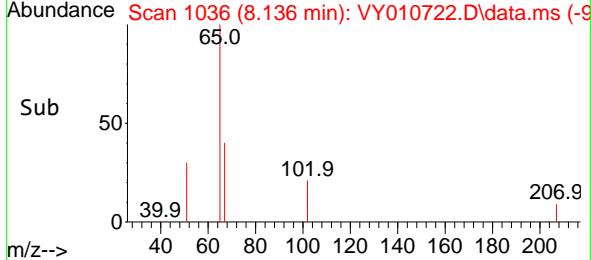
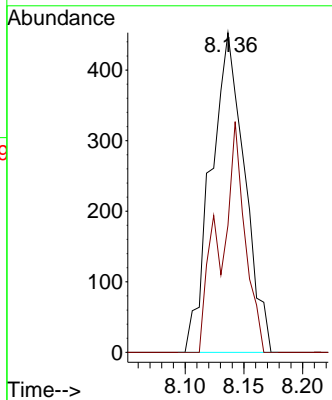
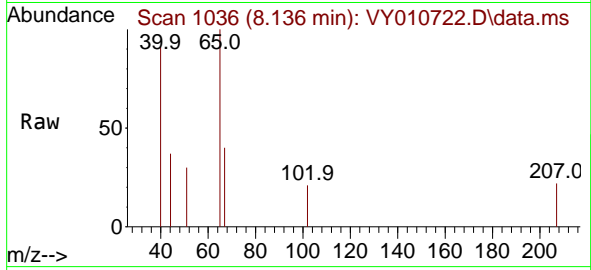




#33  
 1,2-Dichloroethane-d4  
 Concen: 67.382 ug/l  
 RT: 8.136 min Scan# 1036  
 Delta R.T. -0.001 min  
 Lab File: VY010722.D  
 Acq: 28 Sep 2022 17:22

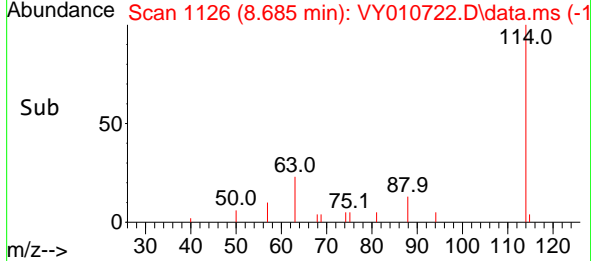
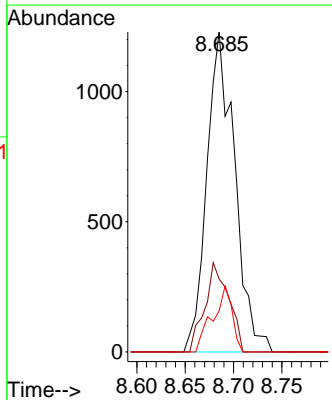
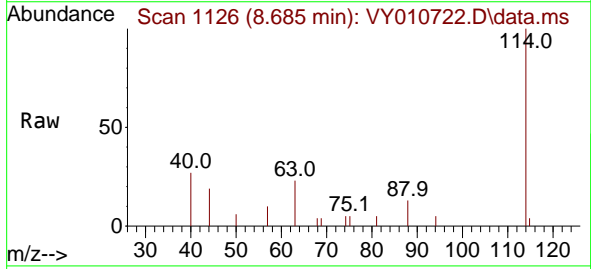
Instrument : MSVOA\_Y  
 ClientSampleId : WC-3RE

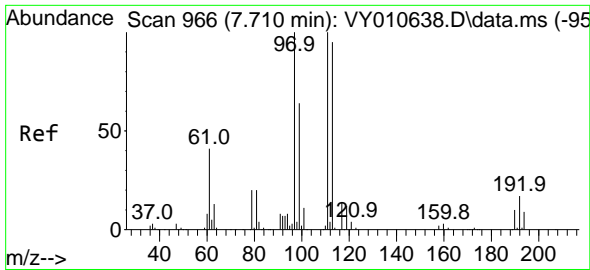
Tgt Ion	Resp	Lower	Upper
65	100		
67	52.9	0.0	99.4



#34  
 1,4-Difluorobenzene  
 Concen: 50.000 ug/l  
 RT: 8.685 min Scan# 1126  
 Delta R.T. 0.000 min  
 Lab File: VY010722.D  
 Acq: 28 Sep 2022 17:22

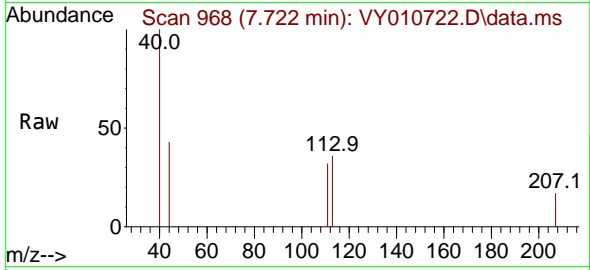
Tgt Ion	Resp	Lower	Upper
114	100		
63	22.8	0.0	43.2
88	12.9	0.0	31.8



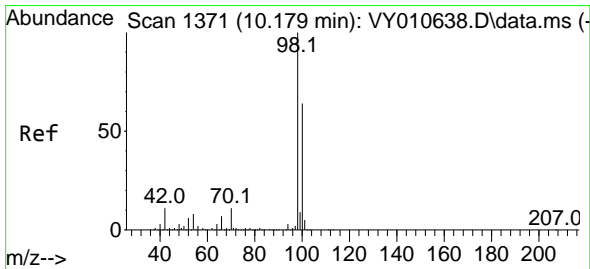
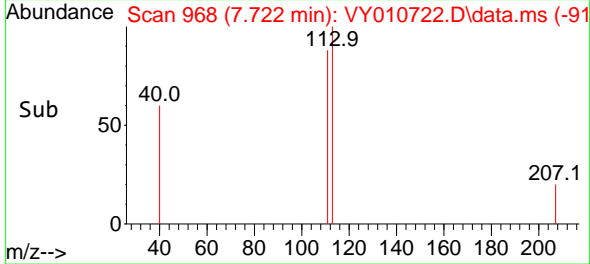
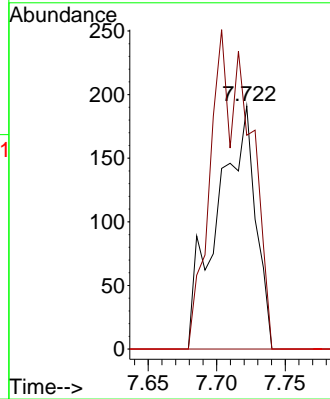


#35  
 Dibromofluoromethane  
 Concen: 23.548 ug/l  
 RT: 7.722 min Scan# 968  
 Delta R.T. 0.012 min  
 Lab File: VY010722.D  
 Acq: 28 Sep 2022 17:22

Instrument : MSVOA\_Y  
 ClientSampleId : WC-3RE

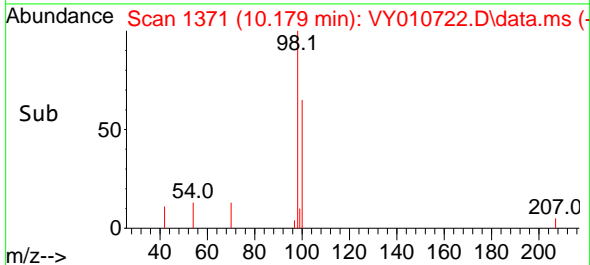
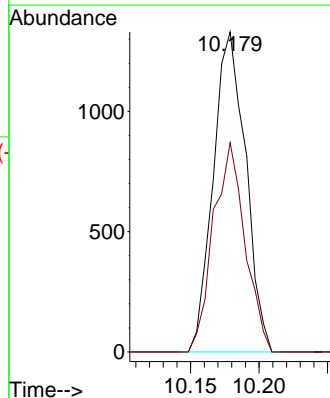
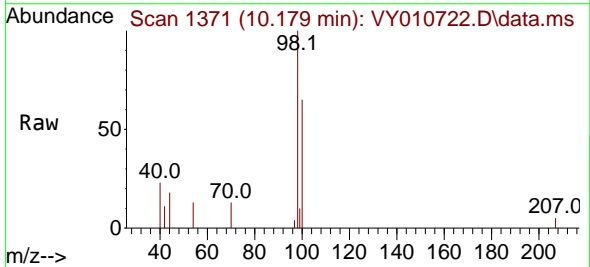


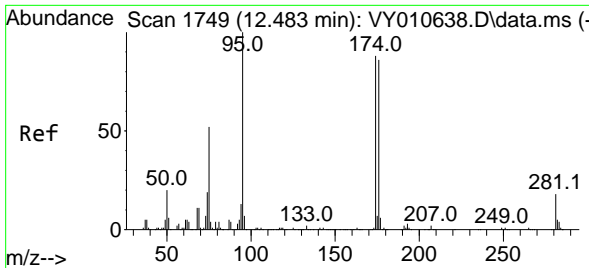
Tgt Ion:113 Resp: 370  
 Ion Ratio Lower Upper  
 113 100  
 111 136.5 82.6 124.0#  
 192 0.0 17.6 26.4#



#50  
 Toluene-d8  
 Concen: 38.400 ug/l  
 RT: 10.179 min Scan# 1371  
 Delta R.T. 0.006 min  
 Lab File: VY010722.D  
 Acq: 28 Sep 2022 17:22

Tgt Ion: 98 Resp: 2185  
 Ion Ratio Lower Upper  
 98 100  
 100 63.9 50.2 75.2



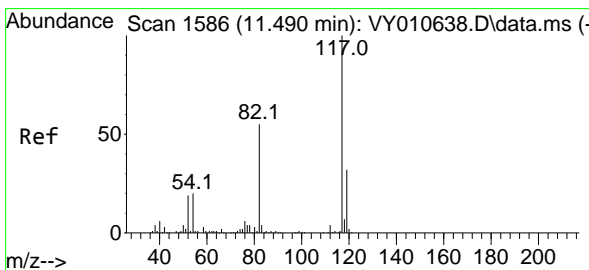
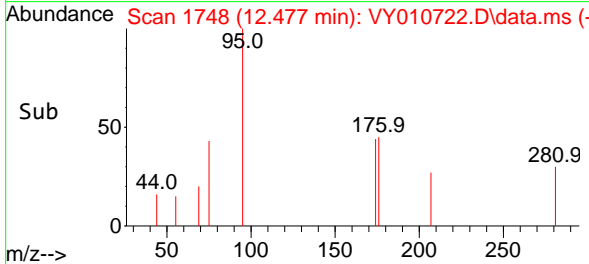
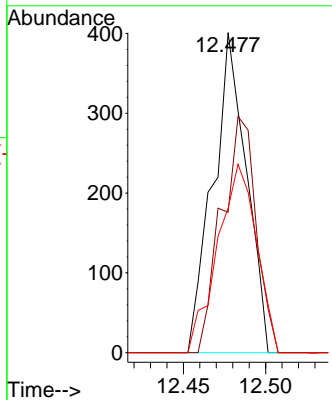
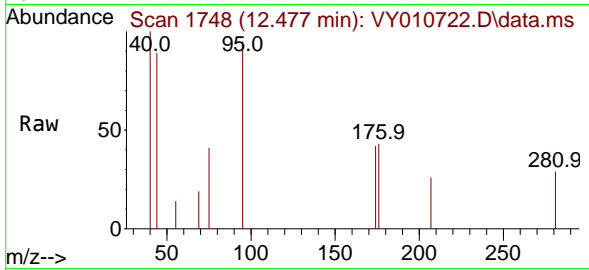


#62  
 4-Bromofluorobenzene  
 Concen: 24.907 ug/l  
 RT: 12.477 min Scan# 1748  
 Delta R.T. 0.000 min  
 Lab File: VY010722.D  
 Acq: 28 Sep 2022 17:22

Instrument :  
 MSVOA\_Y  
 ClientSampleId :  
 WC-3RE

Tgt Ion: 95 Resp: 566

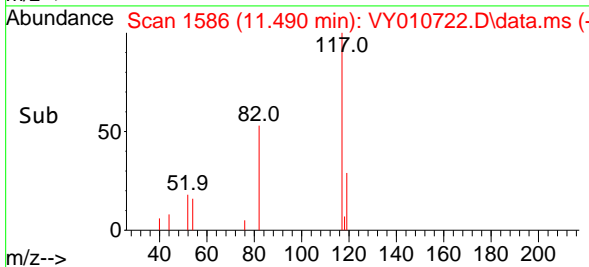
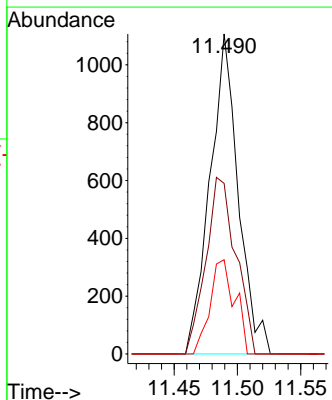
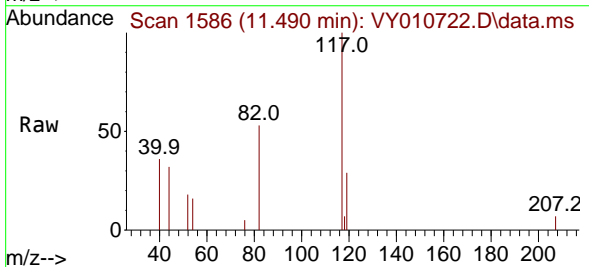
Ion	Ratio	Lower	Upper
95	100		
174	76.0	0.0	177.0
176	68.7	0.0	175.8

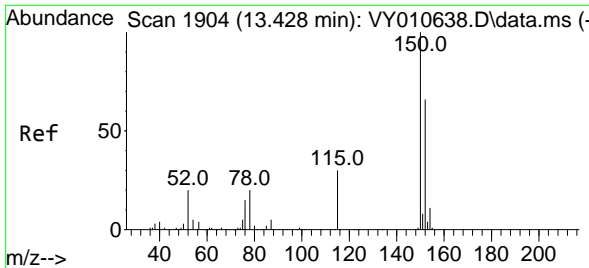


#63  
 Chlorobenzene-d5  
 Concen: 50.000 ug/l  
 RT: 11.490 min Scan# 1586  
 Delta R.T. -0.000 min  
 Lab File: VY010722.D  
 Acq: 28 Sep 2022 17:22

Tgt Ion: 117 Resp: 1724

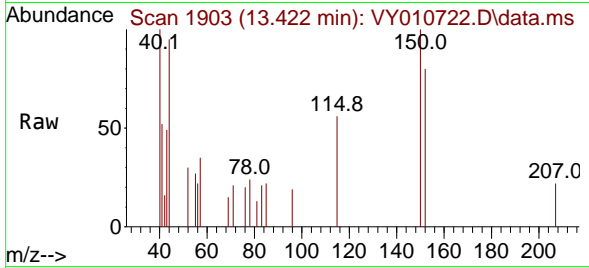
Ion	Ratio	Lower	Upper
117	100		
82	53.3	43.0	64.4
119	29.4	25.4	38.0



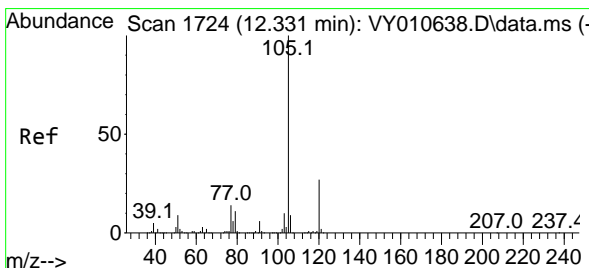
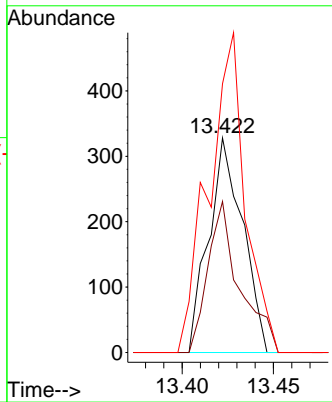
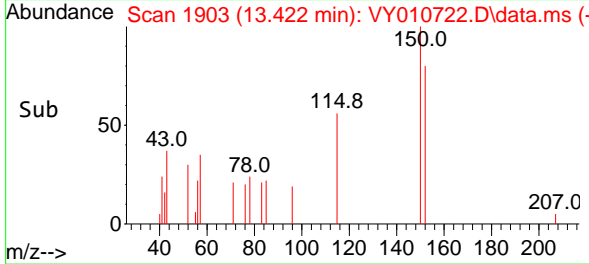


#72  
 1,4-Dichlorobenzene-d4  
 Concen: 50.000 ug/l  
 RT: 13.422 min Scan# 1903  
 Delta R.T. 0.000 min  
 Lab File: VY010722.D  
 Acq: 28 Sep 2022 17:22

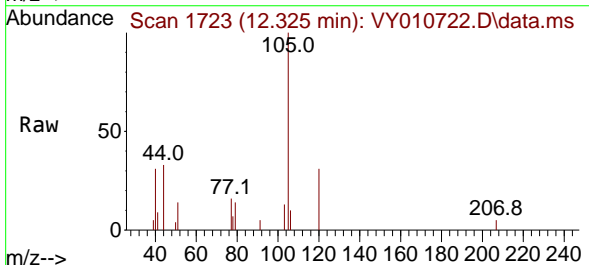
Instrument :  
 MSVOA\_Y  
 ClientSampled :  
 WC-3RE



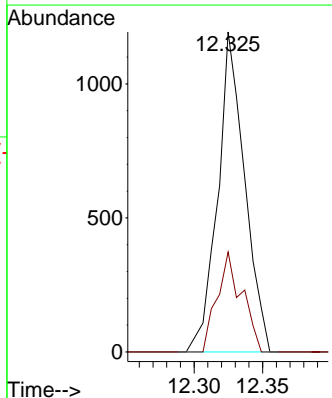
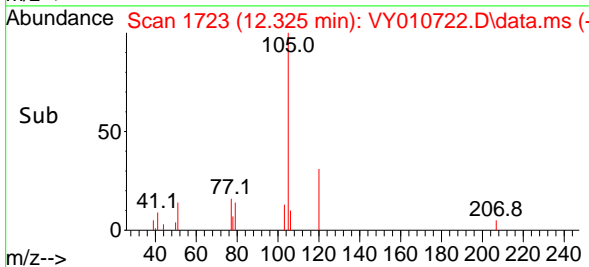
Tgt Ion:152 Resp: 425  
 Ion Ratio Lower Upper  
 152 100  
 115 0.0 28.2 84.7#  
 150 160.2 0.0 347.6

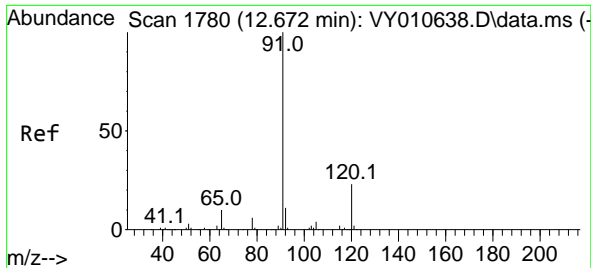


#73  
 Isopropylbenzene  
 Concen: 62.096 ug/l  
 RT: 12.325 min Scan# 1723  
 Delta R.T. -0.000 min  
 Lab File: VY010722.D  
 Acq: 28 Sep 2022 17:22



Tgt Ion:105 Resp: 1631  
 Ion Ratio Lower Upper  
 105 100  
 120 28.8 13.4 40.2

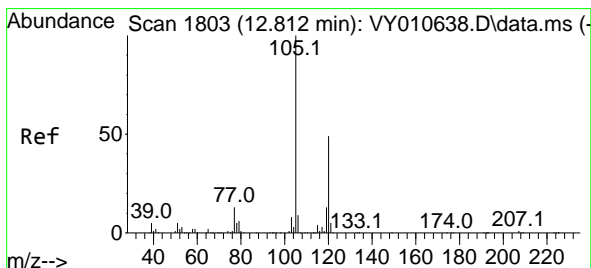
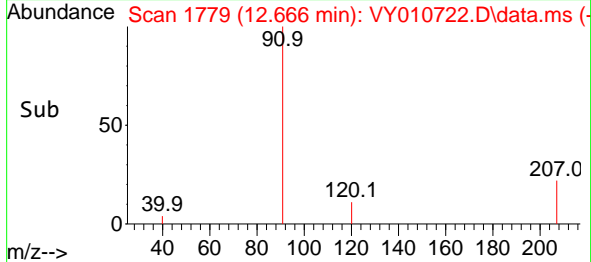
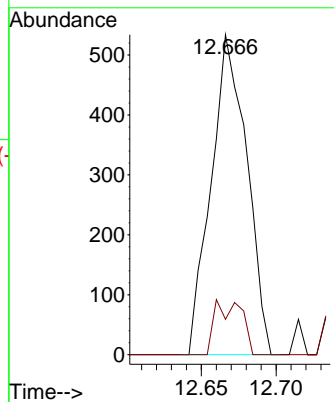
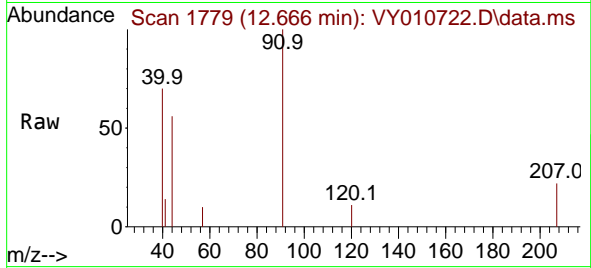




#78  
 n-propylbenzene  
 Concen: 28.287 ug/l  
 RT: 12.666 min Scan# 11  
 Delta R.T. 0.000 min  
 Lab File: VY010722.D  
 Acq: 28 Sep 2022 17:22

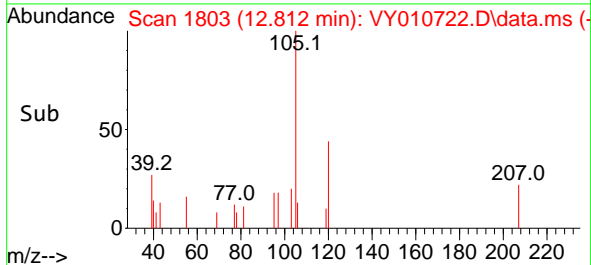
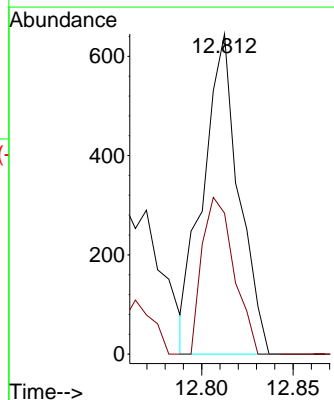
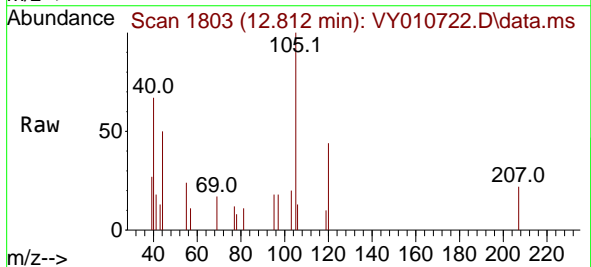
Instrument :  
 MSVOA\_Y  
 ClientSampleId :  
 WC-3RE

Tgt Ion: 91 Resp: 885  
 Ion Ratio Lower Upper  
 91 100  
 120 12.9 11.3 33.9

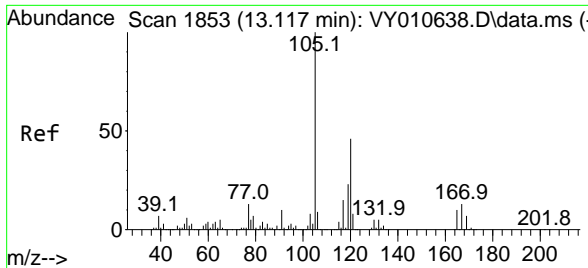


#80  
 1,3,5-Trimethylbenzene  
 Concen: 39.652 ug/l  
 RT: 12.812 min Scan# 1803  
 Delta R.T. -0.001 min  
 Lab File: VY010722.D  
 Acq: 28 Sep 2022 17:22

Tgt Ion: 105 Resp: 880  
 Ion Ratio Lower Upper  
 105 100  
 120 43.8 24.4 73.4

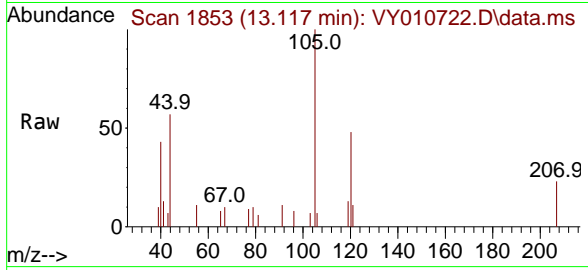






#84  
 1,2,4-Trimethylbenzene  
 Concen: 55.878 ug/l  
 RT: 13.117 min Scan# 11  
 Delta R.T. 0.000 min  
 Lab File: VY010722.D  
 Acq: 28 Sep 2022 17:22

Instrument :  
 MSVOA\_Y  
 ClientSampleId :  
 WC-3RE



Tgt Ion:105 Resp: 1232  
 Ion Ratio Lower Upper  
 105 100  
 120 50.0 22.3 66.9

