

Data Path : Z:\voasrv\HPCHEM1\MSVOA_Y\Data\vy103019\
 Data File : VY000491.D
 Acq On : 30 Oct 2019 14:40
 Operator : SY/MD
 Sample : K5609-22
 Misc : 5.00G/5ML/MSVOA_Y/SOIL
 ALS Vial : 11 Sample Multiplier: 1

Instrument :
 MSVOA_Y
 ClientSampleId :
 PT-VOA-SOIL

Integration Parameters: RTEINT.P

Integrator: RTE
 Smoothing : ON
 Sampling : 1
 Start Thrs: 0.2
 Stop Thrs : 0

Filtering: 5
 Min Area: 3 % of largest Peak
 Max Peaks: 100
 Peak Location: TOP

If leading or trailing edge < 100 prefer < Baseline drop else tangent >
 Peak separation: 5

Method : Z:\VOASRV\HPCHEM1\MSVOA_Y\METHODS\82Y103019S.M
 Title : SW846 8260

Signal : TIC

peak #	R.T. min	first scan	max scan	last scan	PK TY	peak height	corr. area	corr. % max.	% of total
1	3.956	352	364	381	rBV	255006	716084	9.83%	1.106%
2	4.718	476	489	509	rBV	431172	1341580	18.42%	2.073%
3	5.224	555	572	599	rBV2	582177	2002364	27.49%	3.094%
4	6.992	851	862	889	rBV2	572601	1579349	21.68%	2.440%
5	7.724	973	982	988	rBV	170497	414938	5.70%	0.641%
6	7.797	988	994	1005	rVB	344725	789110	10.83%	1.219%
7	8.151	1042	1052	1060	rBV	179638	408806	5.61%	0.632%
8	8.248	1060	1068	1076	rVV	455366	984505	13.51%	1.521%
9	8.352	1076	1085	1099	rVB	922832	2100791	28.84%	3.246%
10	8.699	1133	1142	1154	rBV	495727	994145	13.65%	1.536%
11	8.943	1173	1182	1191	rBV	937300	1817730	24.95%	2.808%
12	9.224	1217	1228	1239	rBV	1178266	2267759	31.13%	3.504%
13	9.931	1336	1344	1352	rBV	1177966	2039386	28.00%	3.151%
14	10.077	1360	1368	1376	rVB	855177	1453019	19.95%	2.245%
15	10.181	1378	1385	1393	rBV	795142	1357499	18.63%	2.097%
16	10.467	1425	1432	1442	rVB	791263	1269531	17.43%	1.961%
17	10.650	1455	1462	1467	rVV	881510	1502804	20.63%	2.322%
18	10.717	1467	1473	1482	rVV	1572821	2693044	36.97%	4.161%
19	10.833	1482	1492	1504	rVV	353525	549476	7.54%	0.849%
20	10.985	1504	1517	1527	rVV	339759	611477	8.39%	0.945%
21	11.089	1527	1534	1541	rVB	188741	306445	4.21%	0.473%
22	11.516	1592	1604	1610	rBV2	1677148	3757686	51.58%	5.806%
23	11.589	1610	1616	1624	rVV	910118	1493014	20.50%	2.307%
24	11.705	1626	1635	1645	rVB	2478511	4603351	63.19%	7.112%
25	12.034	1680	1689	1698	rBV3	3759024	7284770	100.00%	11.255%
26	12.205	1710	1717	1729	rVB	676505	1115909	15.32%	1.724%
27	12.479	1755	1762	1772	rVB	599686	953966	13.10%	1.474%
28	12.583	1772	1779	1786	rBV	789882	1220850	16.76%	1.886%
29	12.668	1787	1793	1800	rVB	1001137	1484632	20.38%	2.294%
30	12.814	1810	1817	1823	rBV	1812548	2745675	37.69%	4.242%
31	13.363	1900	1907	1912	rBV	878986	1382212	18.97%	2.136%
32	13.442	1912	1920	1932	rVB2	2766074	5168659	70.95%	7.986%
33	13.741	1955	1969	1976	rBV	1148492	1855198	25.47%	2.866%
34	14.357	2063	2070	2078	rVB	136350	219900	3.02%	0.340%

Data Path : Z:\voasrv\HPCHEM1\MSVOA_Y\Data\vy103019\
Data File : VY000491.D
Acq On : 30 Oct 2019 14:40
Operator : SY/MD
Sample : K5609-22
Misc : 5.00G/5ML/MSVOA_Y/SOIL
ALS Vial : 11 Sample Multiplier: 1

Instrument :
MSVOA_Y
ClientSampleId :
PT-VOA-SOIL

Integration Parameters: RTEINT.P
Integrator: RTE
Smoothing : ON Filtering: 5
Sampling : 1 Min Area: 3 % of largest Peak
Start Thrs: 0.2 Max Peaks: 100
Stop Thrs : 0 Peak Location: TOP

If leading or trailing edge < 100 prefer < Baseline drop else tangent >
Peak separation: 5

Method : Z:\VOASRV\HPCHEM1\MSVOA_Y\METHODS\82Y103019S.M
Title : SW846 8260

35	15.009	2168	2177	2183	rBV	1473934	2360598	32.40%	3.647%
36	15.235	2206	2214	2222	rBV	1140271	1878668	25.79%	2.903%

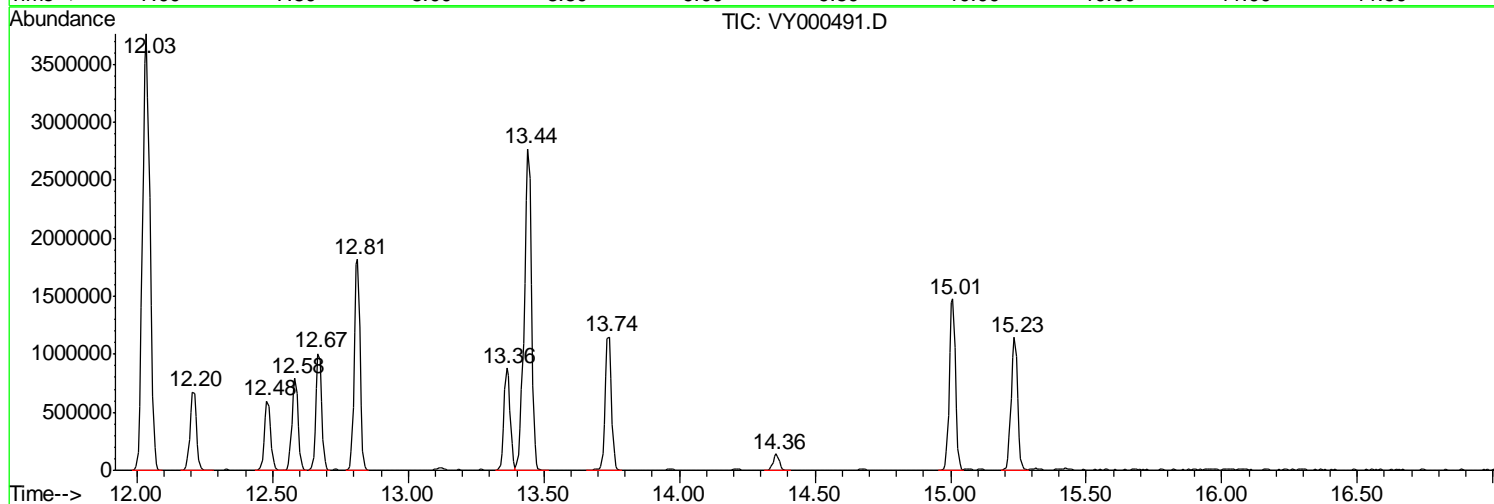
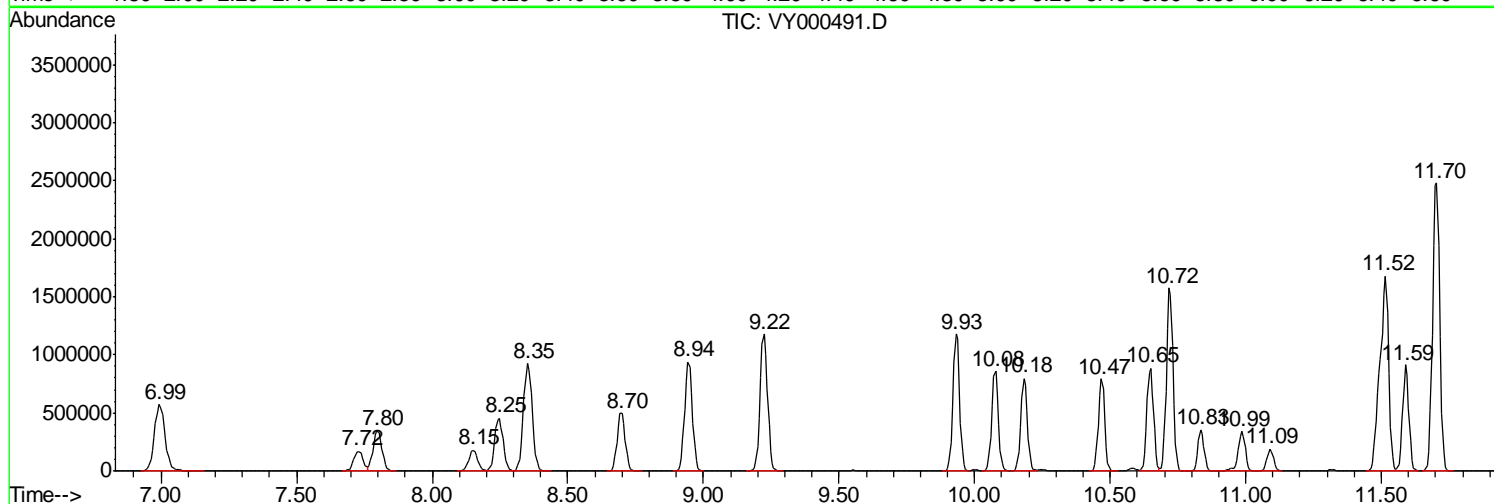
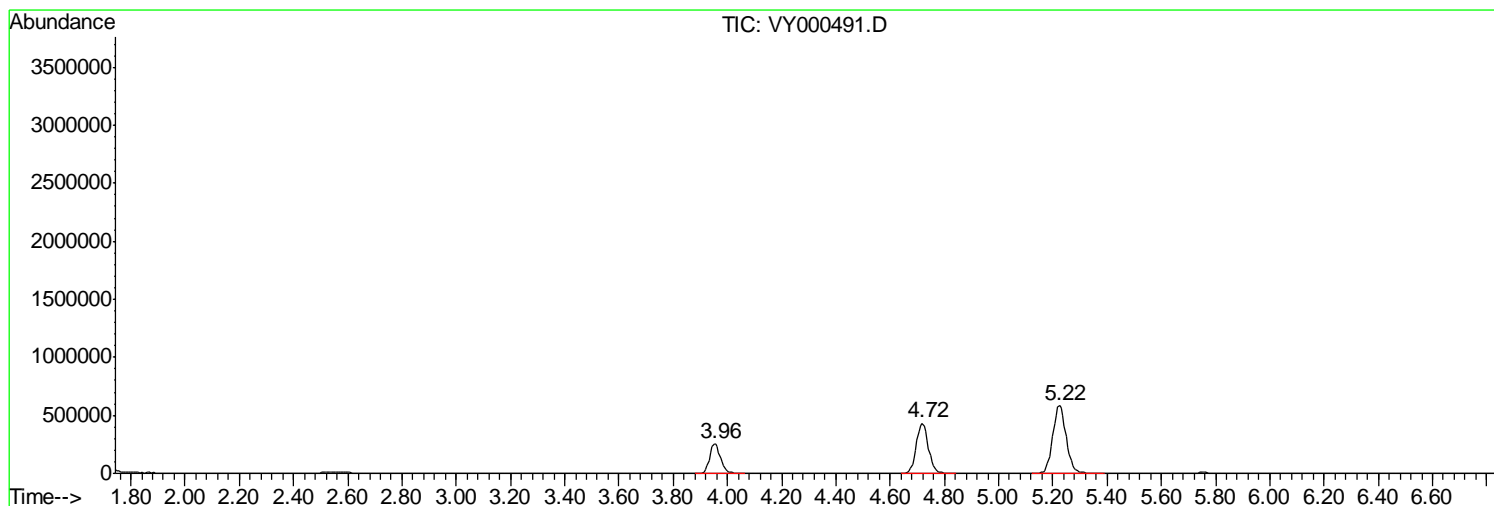
Sum of corrected areas: 64724930

Data Path : Z:\voasrv\HPCHEM1\MSVOA_Y\Data\vy103019\
 Data File : VY000491.D
 Acq On : 30 Oct 2019 14:40
 Operator : SY/MD
 Sample : K5609-22
 Misc : 5.00G/5ML/MSVOA_Y/SOIL
 ALS Vial : 11 Sample Multiplier: 1

Instrument :
 MSVOA_Y
 ClientSampleId :
 PT-VOA-SOIL

Quant Method : Z:\VOASRV\HPCHEM1\MSVOA_Y\METHODS\82Y103019S.M
 Quant Title : SW846 8260

TIC Library : C:\DATABASE\NIST11.L
 TIC Integration Parameters: LSCINT.P



Data Path : Z:\voasrv\HPCHEM1\MSVOA_Y\Data\vy103019\
 Data File : VY000491.D
 Acq On : 30 Oct 2019 14:40
 Operator : SY/MD
 Sample : K5609-22
 Misc : 5.00G/5ML/MSVOA_Y/SOIL
 ALS Vial : 11 Sample Multiplier: 1

Instrument :
 MSVOA_Y
 ClientSampleId :
 PT-VOA-SOIL

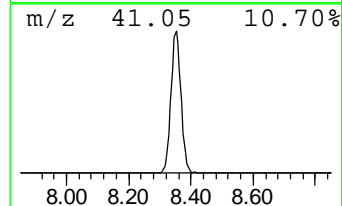
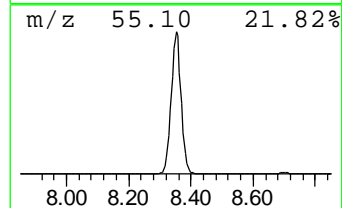
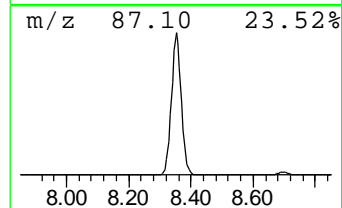
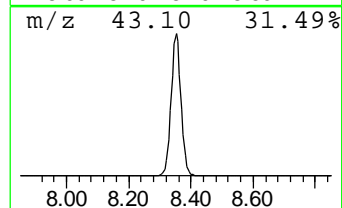
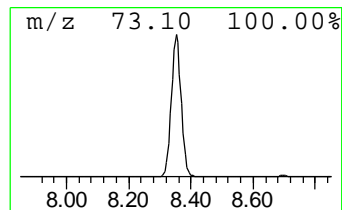
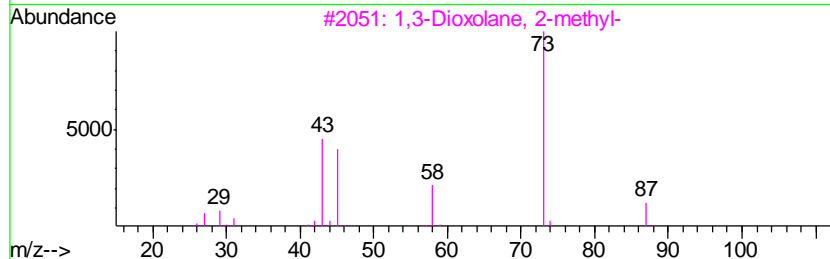
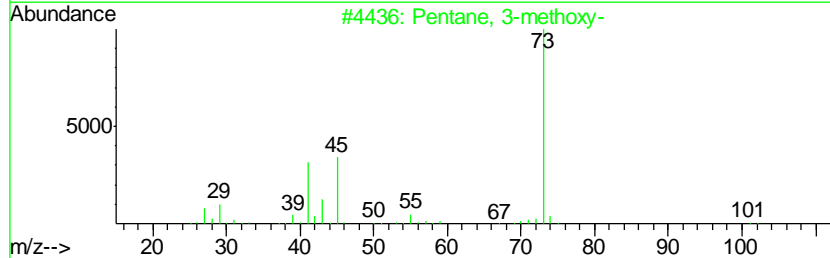
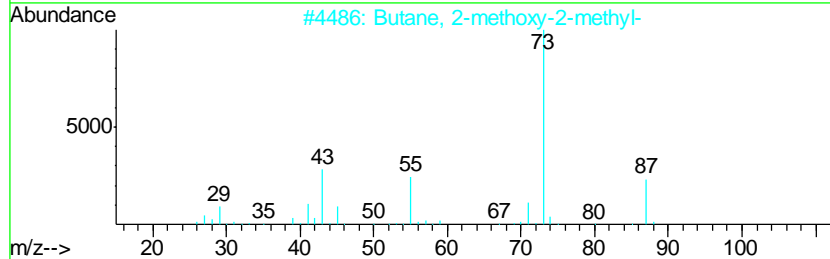
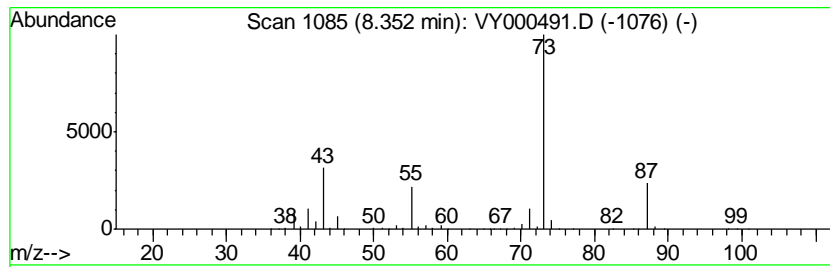
Quant Method : Z:\VOASRV\HPCHEM1\MSVOA_Y\METHODS\82Y103019S.M
 Quant Title : SW846 8260

TIC Library : C:\DATABASE\NIST11.L
 TIC Integration Parameters: LSCINT.P

 Peak Number 1 Butane, 2-methoxy-2-methyl- Concentration Rank 1

R.T.	EstConc	Area	Relative to ISTD	R.T.
8.35	105.66 ug/l	2100790	1,4-Difluorobenzene	8.70

Hit#	of	Tentative ID	MW	MolForm	CAS#	Qual
1	5	Butane, 2-methoxy-2-methyl-	102	C6H14O	000994-05-8	86
2		Pentane, 3-methoxy-	102	C6H14O	036839-67-5	23
3		1,3-Dioxolane, 2-methyl-	88	C4H8O2	000497-26-7	23
4		Silane, tetramethyl-	88	C4H12Si	000075-76-3	17
5		N-Ethylformamide	73	C3H7NO	000627-45-2	9



Data Path : Z:\voasrv\HPCHEM1\MSVOA_Y\Data\vy103019\
Data File : VY000491.D
Acq On : 30 Oct 2019 14:40
Operator : SY/MD
Sample : K5609-22
Misc : 5.00G/5ML/MSVOA_Y/SOIL
ALS Vial : 11 Sample Multiplier: 1

Instrument :
MSVOA_Y
ClientSampleId :
PT-VOA-SOIL

Quant Method : Z:\VOASRV\HPCHEM1\MSVOA_Y\METHODS\82Y103019S.M
Quant Title : SW846 8260

TIC Library : C:\DATABASE\NIST11.L
TIC Integration Parameters: LSCINT.P

TIC Top Hit name	RT	EstConc	Units	Response	--Internal Standard--			
					#	RT	Resp	Conc
Butane, 2-methoxy...	8.35	105.7	ug/l	2100790	2	8.70	994145	50.0