

Data Path : Z:\VOASRV\HPCHEM1\MSVOA\_Y\DATA\VY103119\  
 Data File : VY000506.D  
 Acq On : 31 Oct 2019 15:25  
 Operator : SY/MD  
 Sample : K5615-05  
 Misc : 7.45G/5ML/MSVOA\_Y/SOIL  
 ALS Vial : 11 Sample Multiplier: 1

## Integration Parameters: RTEINT.P

Integrator: RTE  
 Smoothing : ON Filtering: 5  
 Sampling : 1 Min Area: 3 % of largest Peak  
 Start Thrs: 0.2 Max Peaks: 100  
 Stop Thrs : 0 Peak Location: TOP

If leading or trailing edge < 100 prefer < Baseline drop else tangent >  
 Peak separation: 5

Method : Z:\VOASRV\HPCHEM1\MSVOA\_Y\METHODS\82Y103019S.M  
 Title : SW846 8260

Signal : TIC

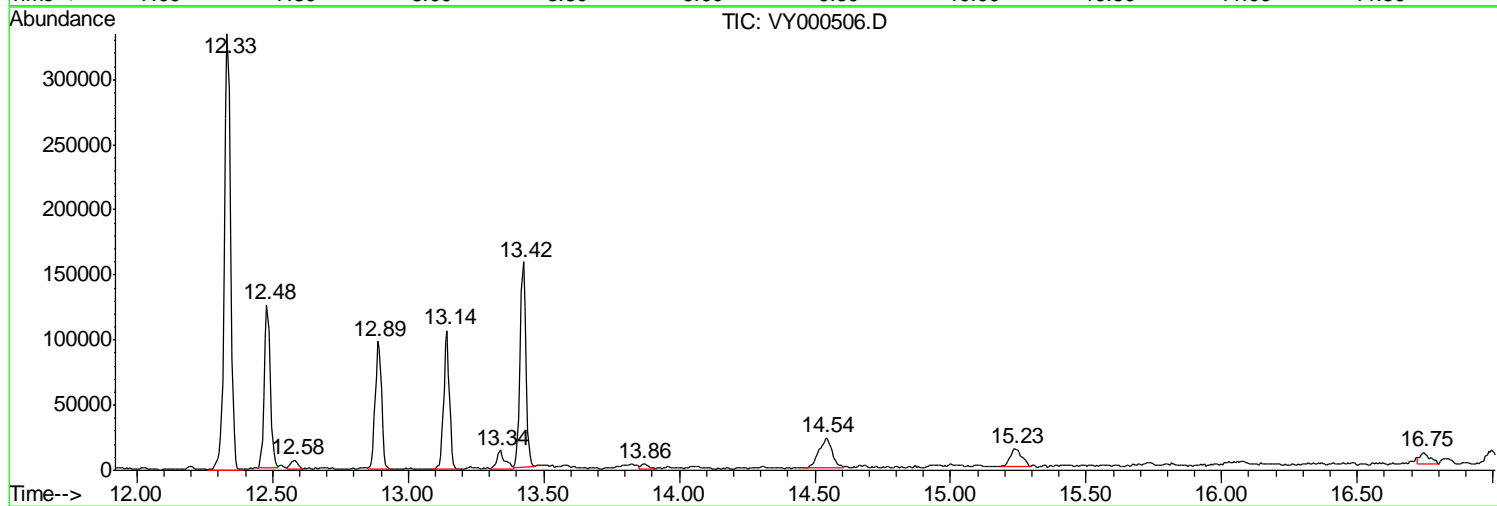
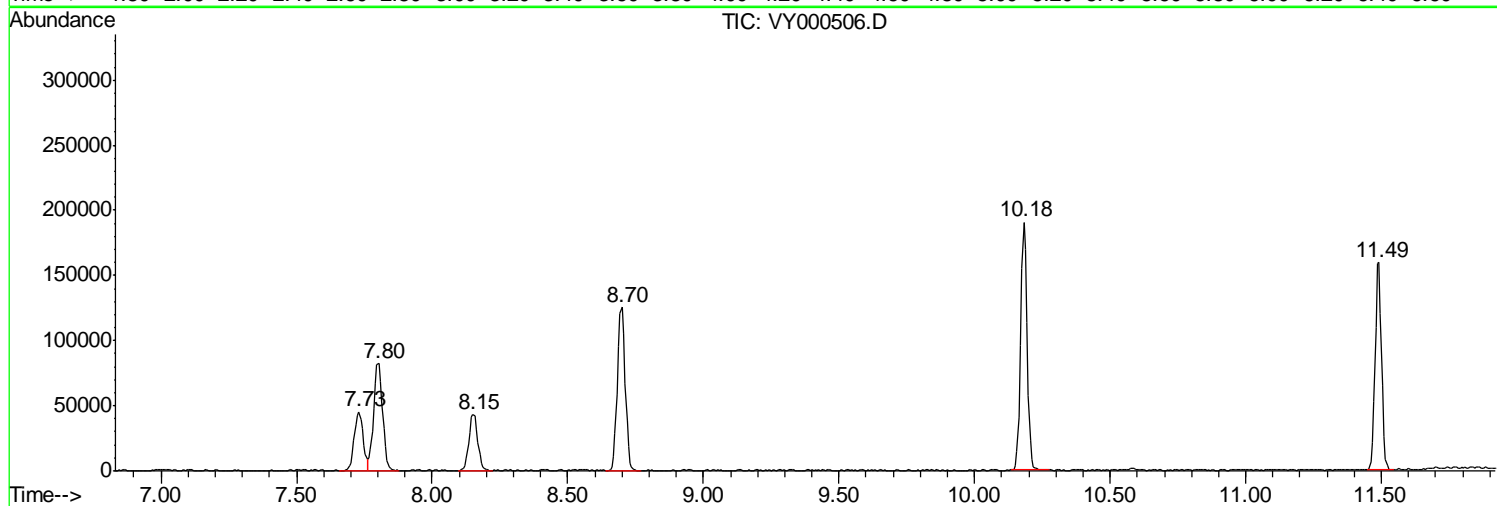
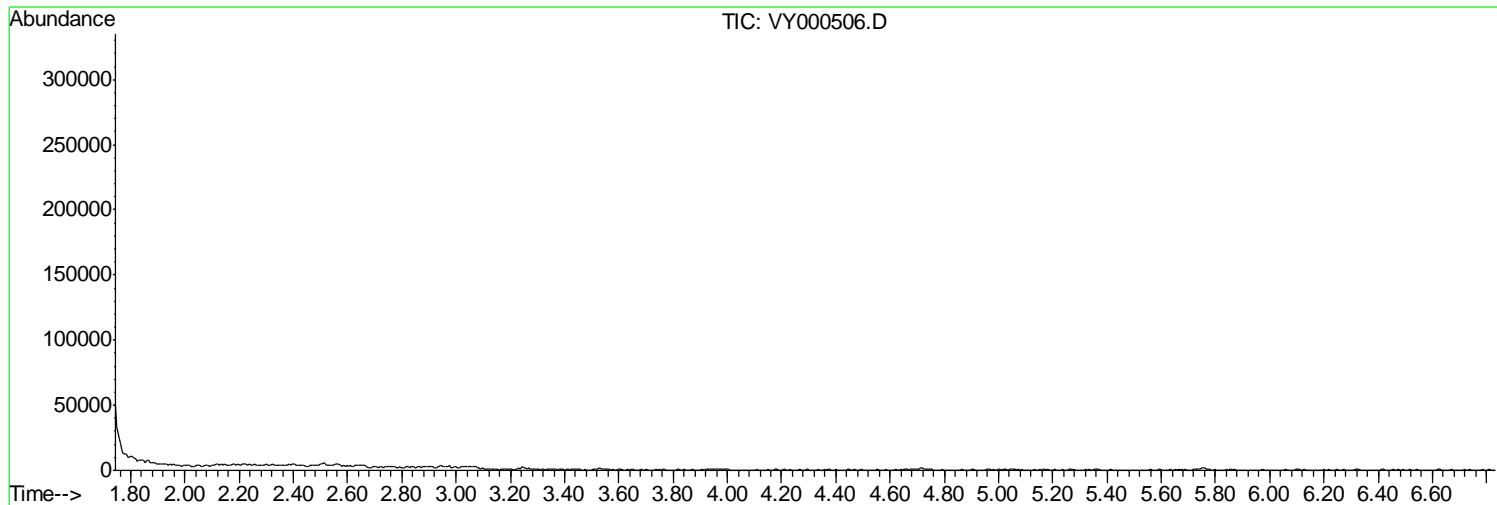
peak #	R.T. min	first scan	max scan	last scan	PK TY	peak height	corr. area	corr. % max.	% of total
1	7.730	971	983	988	rBV2	45195	104285	19.22%	3.839%
2	7.803	988	995	1007	rVB	81911	189581	34.94%	6.979%
3	8.151	1043	1052	1063	rBV3	42932	98183	18.09%	3.614%
4	8.699	1132	1142	1153	rVB	125475	249634	46.01%	9.190%
5	10.181	1378	1385	1400	rBV	190291	321038	59.17%	11.818%
6	11.492	1593	1600	1608	rBV	159216	267215	49.25%	9.837%
7	12.333	1726	1738	1748	rBV	334775	542607	100.00%	19.974%
8	12.479	1756	1762	1769	rBV2	125191	196329	36.18%	7.227%
9	12.583	1774	1779	1783	rVB5	7142	12076	2.23%	0.445%
10	12.888	1823	1829	1837	rVB	98236	158223	29.16%	5.824%
11	13.144	1862	1871	1878	rVB	106581	160535	29.59%	5.910%
12	13.339	1897	1903	1911	rBV5	13888	28182	5.19%	1.037%
13	13.424	1911	1917	1924	rVV	157367	240078	44.25%	8.838%
14	13.863	1987	1989	1997	rVB6	3776	6410	1.18%	0.236%
15	14.540	2087	2100	2111	rBV4	23231	78389	14.45%	2.886%
16	15.235	2206	2214	2224	rBV3	13725	42856	7.90%	1.578%
17	16.747	2458	2462	2471	rVB9	8721	20889	3.85%	0.769%

Sum of corrected areas: 2716510

Data Path : Z:\VOASRV\HPCHEM1\MSVOA\_Y\DATA\VY103119\  
 Data File : VY000506.D  
 Acq On : 31 Oct 2019 15:25  
 Operator : SY/MD  
 Sample : K5615-05  
 Misc : 7.45G/5ML/MSVOA\_Y/SOIL  
 ALS Vial : 11 Sample Multiplier: 1

Quant Method : Z:\VOASRV\HPCHEM1\MSVOA\_Y\METHODS\82Y103019S.M  
 Quant Title : SW846 8260

TIC Library : C:\DATABASE\NIST11.L  
 TIC Integration Parameters: LSCINT.P



Data Path : Z:\VOASRV\HPCHEM1\MSVOA\_Y\DATA\VY103119\  
 Data File : VY000506.D  
 Acq On : 31 Oct 2019 15:25  
 Operator : SY/MD  
 Sample : K5615-05  
 Misc : 7.45G/5ML/MSVOA\_Y/SOIL  
 ALS Vial : 11 Sample Multiplier: 1

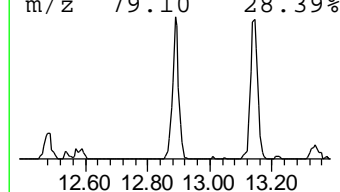
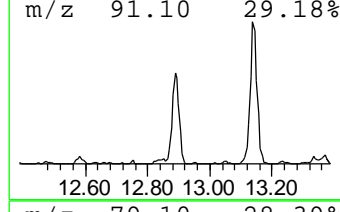
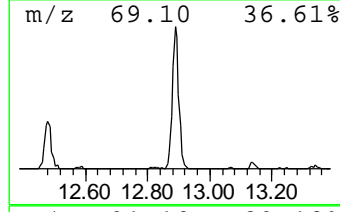
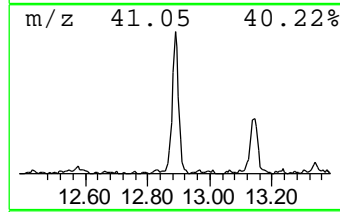
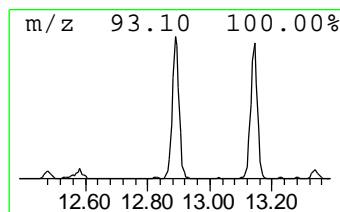
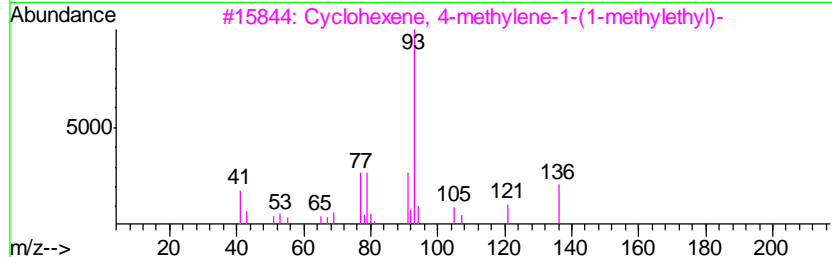
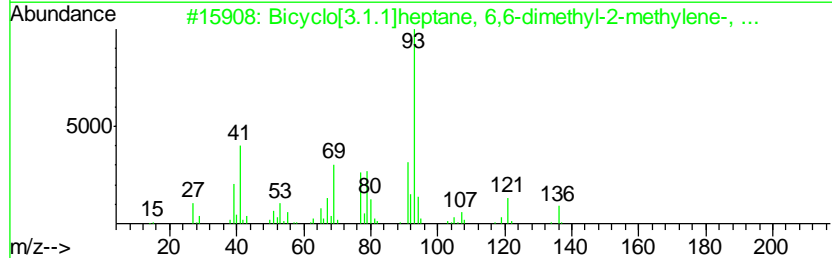
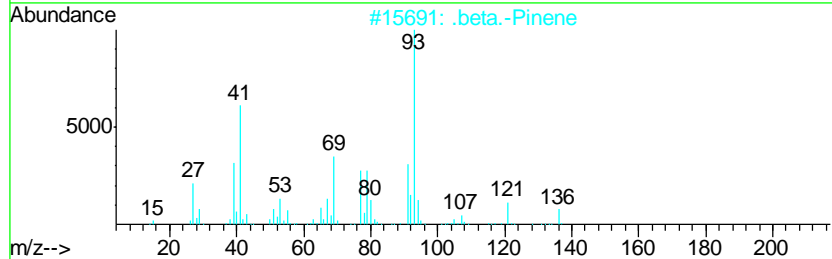
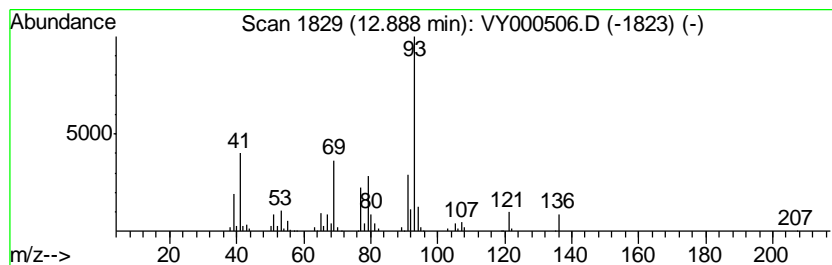
Quant Method : Z:\VOASRV\HPCHEM1\MSVOA\_Y\METHODS\82Y103019S.M  
 Quant Title : SW846 8260

TIC Library : C:\DATABASE\NIST11.L  
 TIC Integration Parameters: LSCINT.P

\*\*\*\*\*  
 Peak Number 1 .beta.-Pinene Concentration Rank 2

R.T.	EstConc	Area	Relative to ISTD	R.T.
12.89	32.95 ug/l	158223	1,4-Dichlorobenzene-d4	13.42

Hit#	of	Tentative ID	MW	MolForm	CAS#	Qual
1	5	.beta.-Pinene	136	C10H16	000127-91-3	94
2		Bicyclo[3.1.1]heptane, 6,6-dimet...	136	C10H16	018172-67-3	93
3		Cyclohexene, 4-methylene-1-(1-me...	136	C10H16	000099-84-3	83
4		Bicyclo[3.1.0]hexane, 4-methylen...	136	C10H16	003387-41-5	80
5		.beta.-Phellandrene	136	C10H16	000555-10-2	74



Data Path : Z:\VOASRV\HPCHEM1\MSVOA\_Y\DATA\VY103119\  
 Data File : VY000506.D  
 Acq On : 31 Oct 2019 15:25  
 Operator : SY/MD  
 Sample : K5615-05  
 Misc : 7.45G/5ML/MSVOA\_Y/SOIL  
 ALS Vial : 11 Sample Multiplier: 1

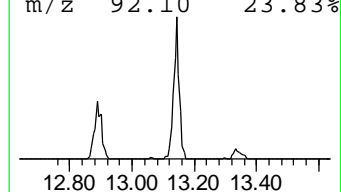
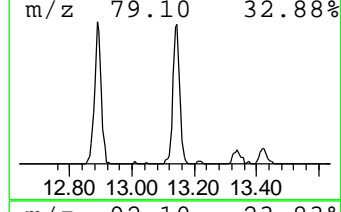
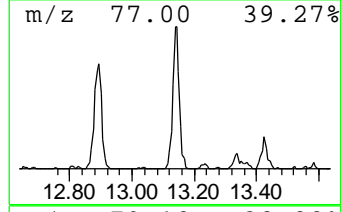
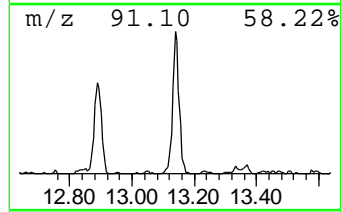
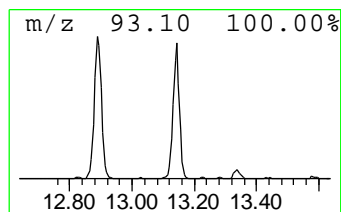
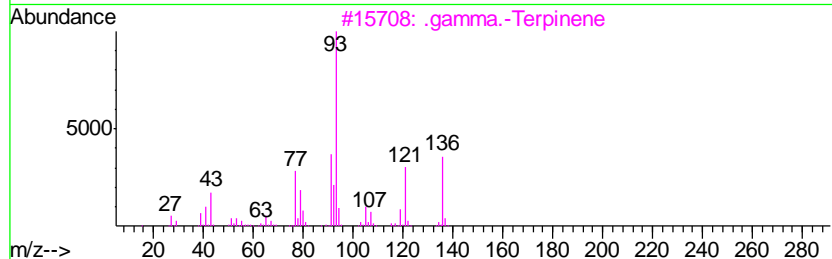
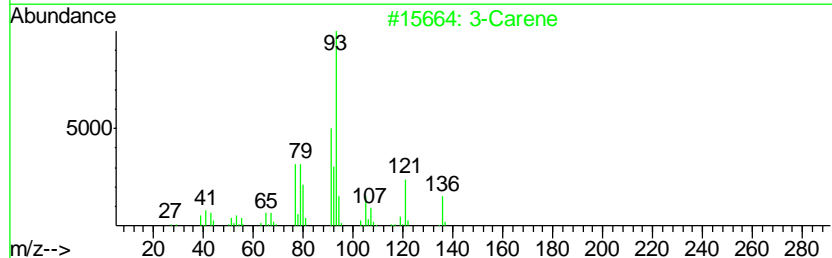
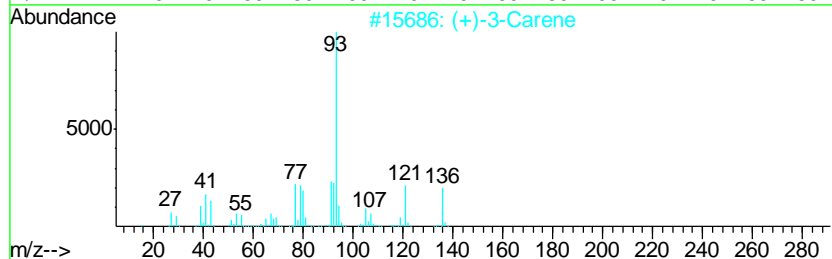
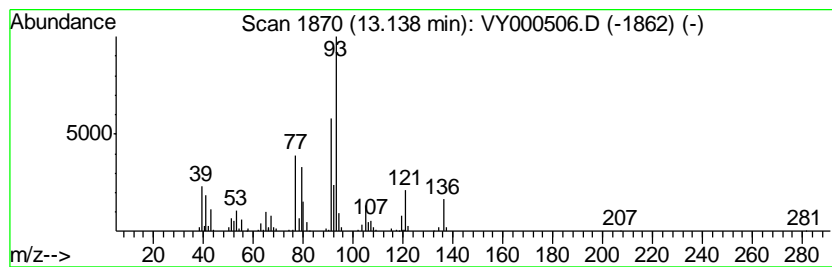
Quant Method : Z:\VOASRV\HPCHEM1\MSVOA\_Y\METHODS\82Y103019S.M  
 Quant Title : SW846 8260

TIC Library : C:\DATABASE\NIST11.L  
 TIC Integration Parameters: LSCINT.P

\*\*\*\*\*  
 Peak Number 2 (+)-3-Carene Concentration Rank 1

R.T.	EstConc	Area	Relative to ISTD	R.T.
13.14	33.43 ug/l	160535	1,4-Dichlorobenzene-d4	13.42

Hit#	of	Tentative ID	MW	MolForm	CAS#	Qual
1	5	(+)-3-Carene	136	C10H16	000498-15-7	94
2		3-Carene	136	C10H16	013466-78-9	94
3		.gamma.-Terpinene	136	C10H16	000099-85-4	93
4		(1R)-2,6,6-Trimethylbicyclo[3.1....	136	C10H16	007785-70-8	93
5		(1S)-2,6,6-Trimethylbicyclo[3.1....	136	C10H16	007785-26-4	90



Data Path : Z:\VOASRV\HPCHEM1\MSVOA\_Y\DATA\VY103119\  
 Data File : VY000506.D  
 Acq On : 31 Oct 2019 15:25  
 Operator : SY/MD  
 Sample : K5615-05  
 Misc : 7.45G/5ML/MSVOA\_Y/SOIL  
 ALS Vial : 11 Sample Multiplier: 1

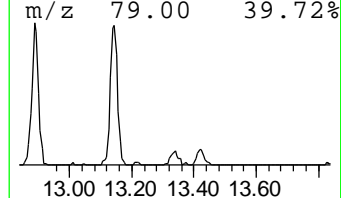
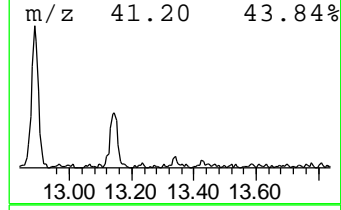
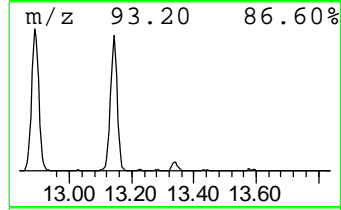
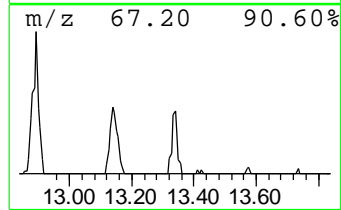
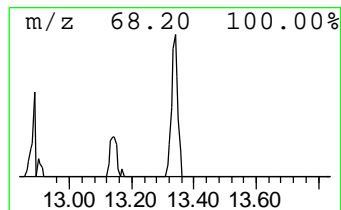
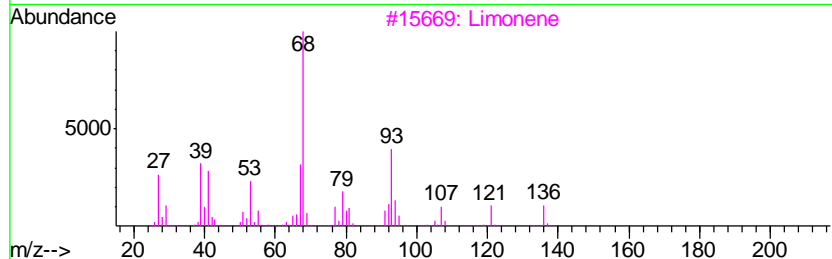
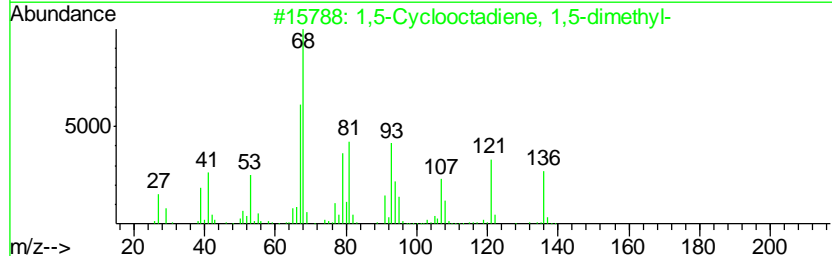
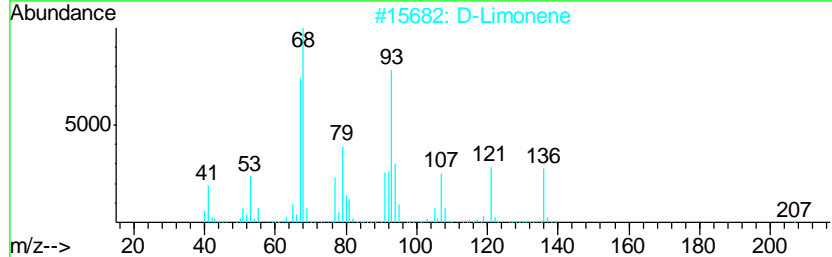
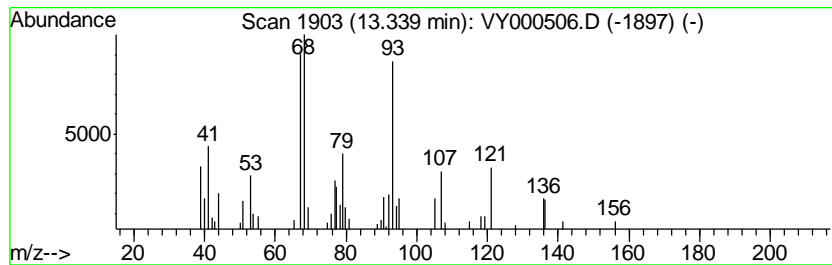
Quant Method : Z:\VOASRV\HPCHEM1\MSVOA\_Y\METHODS\82Y103019S.M  
 Quant Title : SW846 8260

TIC Library : C:\DATABASE\NIST11.L  
 TIC Integration Parameters: LSCINT.P

\*\*\*\*\*  
 Peak Number 3 D-Limonene Concentration Rank 5

R.T.	EstConc	Area	Relative to ISTD	R.T.
13.34	5.87 ug/l	28182	1,4-Dichlorobenzene-d4	13.42

Hit#	of	Tentative ID	MW	MolForm	CAS#	Qual
1	5	D-Limonene	136	C10H16	005989-27-5	91
2		1,5-Cyclooctadiene, 1,5-dimethyl-	136	C10H16	003760-14-3	68
3		Limonene	136	C10H16	000138-86-3	58
4		2-Carene	136	C10H16	000554-61-0	50
5		3-Carene	136	C10H16	013466-78-9	45



Data Path : Z:\VOASRV\HPCHEM1\MSVOA\_Y\DATA\VY103119\  
 Data File : VY000506.D  
 Acq On : 31 Oct 2019 15:25  
 Operator : SY/MD  
 Sample : K5615-05  
 Misc : 7.45G/5ML/MSVOA\_Y/SOIL  
 ALS Vial : 11 Sample Multiplier: 1

Quant Method : Z:\VOASRV\HPCHEM1\MSVOA\_Y\METHODS\82Y103019S.M  
 Quant Title : SW846 8260

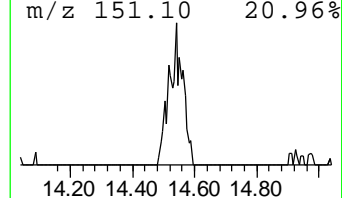
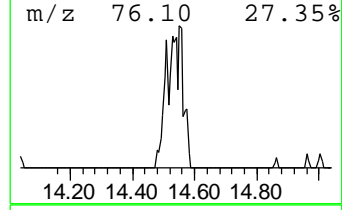
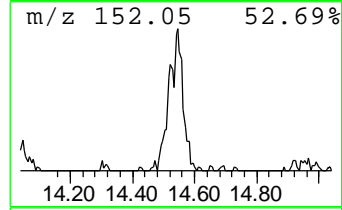
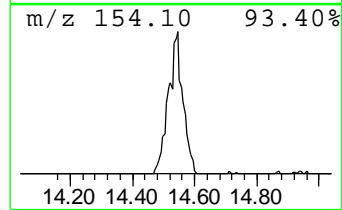
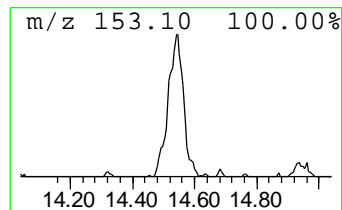
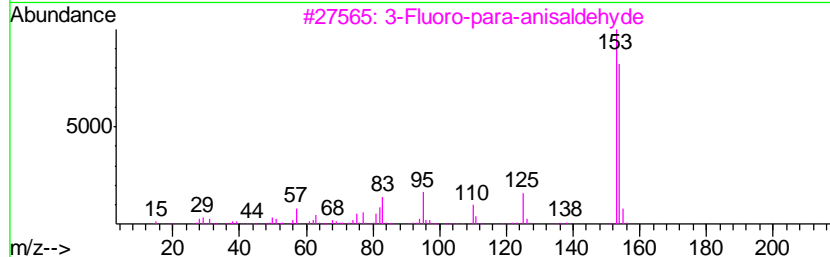
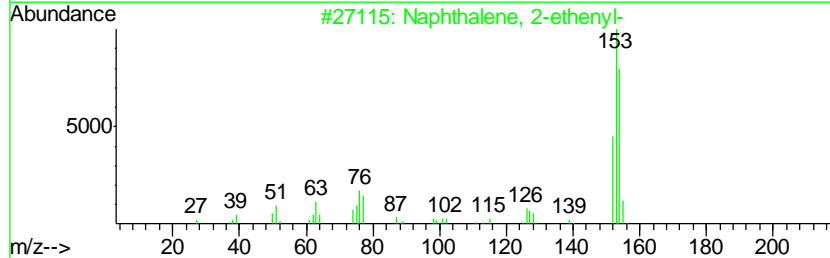
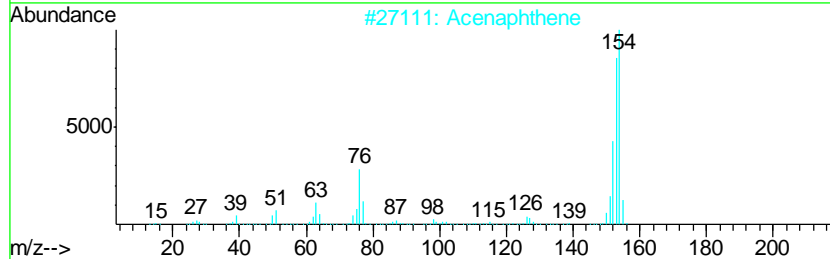
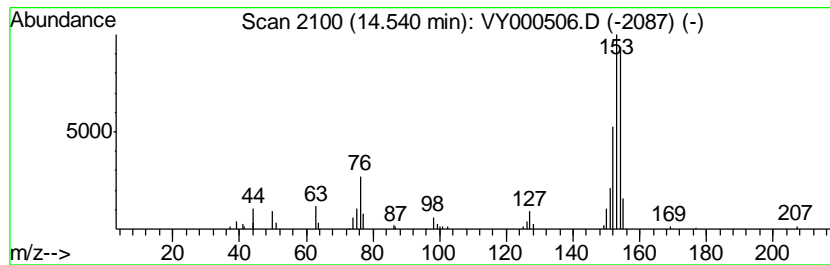
TIC Library : C:\DATABASE\NIST11.L  
 TIC Integration Parameters: LSCINT.P

\*\*\*\*\*  
 Peak Number 4 Acenaphthene Concentration Rank 3

R.T.	EstConc	Area	Relative to ISTD	R.T.
14.54	16.33 ug/l	78389	1,4-Dichlorobenzene-d4	13.42

Hit#	of	Tentative ID	MW	MolForm	CAS#	Qual
1	5	Acenaphthene	154	C12H10	000083-32-9	72
2		Naphthalene, 2-ethenyl-	154	C12H10	000827-54-3	50
3		3-Fluoro-para-anisaldehyde	154	C8H7FO2	000351-54-2	47
4		Biphenyl	154	C12H10	000092-52-4	47
5		.beta.-(1-Naphthyl)acrylic acid	198	C13H10O2	013026-12-5	40



Data Path : Z:\VOASRV\HPCHEM1\MSVOA\_Y\DATA\VY103119\  
 Data File : VY000506.D  
 Acq On : 31 Oct 2019 15:25  
 Operator : SY/MD  
 Sample : K5615-05  
 Misc : 7.45G/5ML/MSVOA\_Y/SOIL  
 ALS Vial : 11 Sample Multiplier: 1

Quant Method : Z:\VOASRV\HPCHEM1\MSVOA\_Y\METHODS\82Y103019S.M  
 Quant Title : SW846 8260

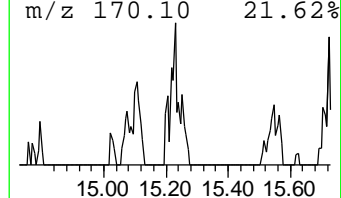
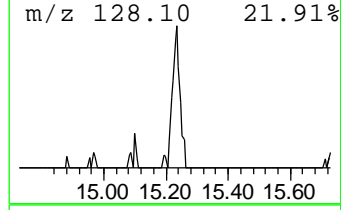
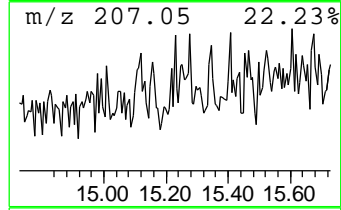
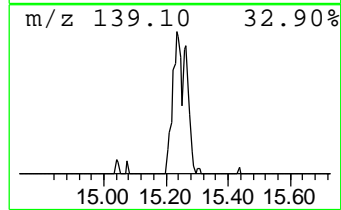
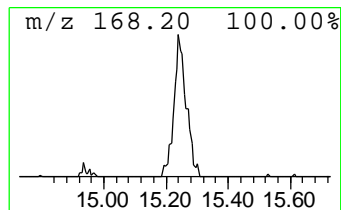
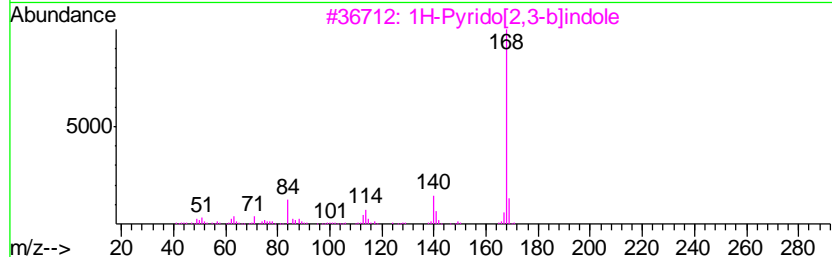
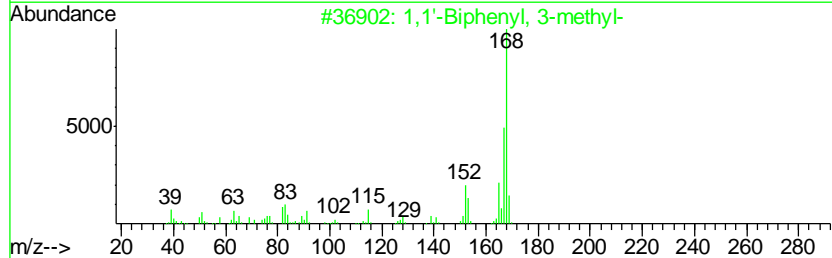
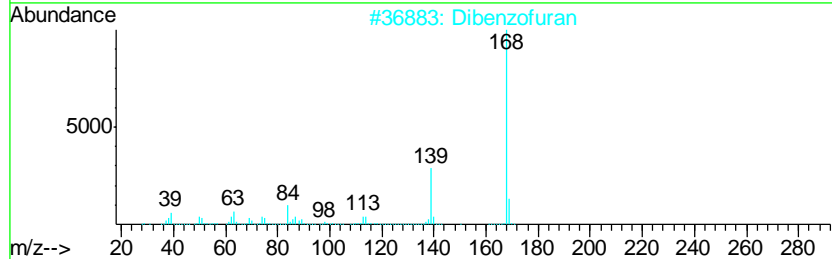
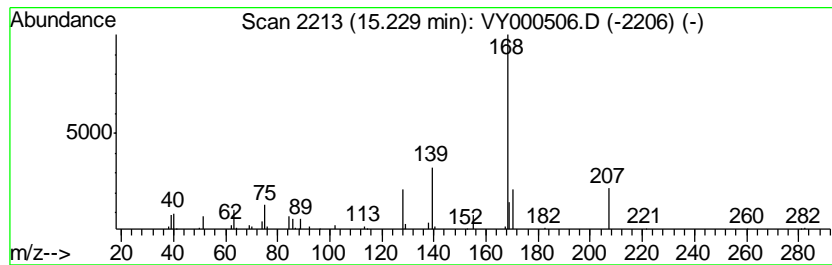
TIC Library : C:\DATABASE\NIST11.L  
 TIC Integration Parameters: LSCINT.P

\*\*\*\*\*  
 Peak Number 5 Dibenzofuran Concentration Rank 4

R.T.	EstConc	Area	Relative to ISTD	R.T.
15.23	8.93 ug/l	42856	1,4-Dichlorobenzene-d4	13.42

Hit#	of	Tentative ID	MW	MolForm	CAS#	Qual
1	5	Dibenzofuran	168	C12H8O	000132-64-9	58
2		1,1'-Biphenyl, 3-methyl-	168	C13H12	000643-93-6	50
3		1H-Pyrido[2,3-b]indole	168	C11H8N2	000244-76-8	46
4		6-Hydroxy-8-mercaptapurine	168	C5H4N4OS	006305-94-8	43
5		Cytosine, tert-butyl dimethylsilyl...	225	C10H19N3OSi	1000332-81-9	43



Data Path : Z:\VOASRV\HPCHEM1\MSVOA\_Y\DATA\VY103119\  
Data File : VY000506.D  
Acq On : 31 Oct 2019 15:25  
Operator : SY/MD  
Sample : K5615-05  
Misc : 7.45G/5ML/MSVOA\_Y/SOIL  
ALS Vial : 11 Sample Multiplier: 1

Quant Method : Z:\VOASRV\HPCHEM1\MSVOA\_Y\METHODS\82Y103019S.M  
Quant Title : SW846 8260

TIC Library : C:\DATABASE\NIST11.L  
TIC Integration Parameters: LSCINT.P

TIC Top Hit name	RT	EstConc	Units	Response	--Internal Standard--			
					#	RT	Resp	Conc
.beta.-Pinene	12.89	33.0	ug/l	158223	4	13.42	240078	50.0
(+)-3-Carene	13.14	33.4	ug/l	160535	4	13.42	240078	50.0
D-Limonene	13.34	5.9	ug/l	28182	4	13.42	240078	50.0
Acenaphthene	14.54	16.3	ug/l	78389	4	13.42	240078	50.0
Dibenzofuran	15.23	8.9	ug/l	42856	4	13.42	240078	50.0