

Data Path : Z:\voasrv\HPCHEM1\MSVOA_Y\Data\VY110122\
 Data File : VY011221.D
 Acq On : 01 Nov 2022 14:57
 Operator : KP/MD
 Sample : N5316-06RE
 Misc : 8.51g/5.0mL/MSVOA_Y/SOIL
 ALS Vial : 15 Sample Multiplier: 1

Instrument :
 MSVOA_Y
 ClientSampleId :
 TOTAL-VOC-GRAB-6-NE-QUARTERRE

Quant Time: Nov 01 15:11:45 2022
 Quant Method : Z:\voasrv\HPCHEM1\MSVOA_Y\methods\82Y110122S.M
 Quant Title : SW846 8260
 QLast Update : Tue Nov 01 11:56:18 2022
 Response via : Initial Calibration

Compound	R.T.	QIon	Response	Conc	Units	Dev(Min)

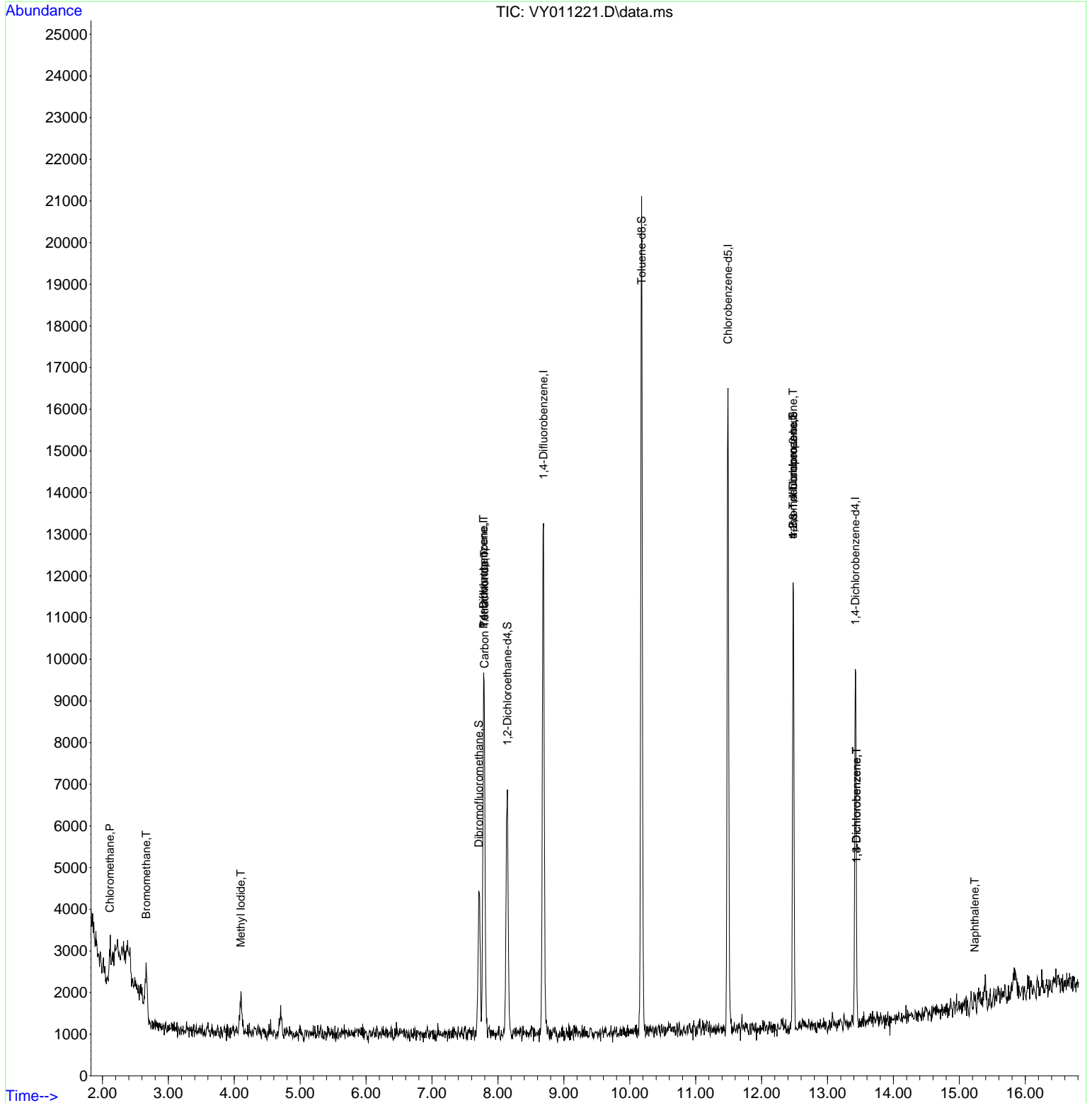
Internal Standards						
1) Pentafluorobenzene	7.783	168	7479	50.000	ug/l	0.00
34) 1,4-Difluorobenzene	8.691	114	11405	50.000	ug/l	0.00
63) Chlorobenzene-d5	11.489	117	9460	50.000	ug/l	0.00
72) 1,4-Dichlorobenzene-d4	13.422	152	2717	50.000	ug/l	0.00
System Monitoring Compounds						
33) 1,2-Dichloroethane-d4	8.142	65	4705	58.821	ug/l	0.00
Spiked Amount	50.000	Range 50 - 163	Recovery	=	117.640%	
35) Dibromofluoromethane	7.709	113	2732	37.283	ug/l	0.00
Spiked Amount	50.000	Range 54 - 147	Recovery	=	74.560%	
50) Toluene-d8	10.179	98	14066	49.441	ug/l	0.00
Spiked Amount	50.000	Range 49 - 140	Recovery	=	98.880%	
62) 4-Bromofluorobenzene	12.477	95	3719	37.654	ug/l	0.00
Spiked Amount	50.000	Range 25 - 144	Recovery	=	75.300%	
Target Compounds						
					Qvalue	
3) Chloromethane	2.113	50	443	5.342	ug/l #	82
5) Bromomethane	2.662	94	630	10.194	ug/l	97
10) Methyl Iodide	4.100	142	1379	13.019	ug/l #	85
20) Methylene Chloride	4.704	84	327	Below Cal	#	67
36) 1,1-Dichloropropene	7.783	75	488	4.078	ug/l #	42
38) Carbon Tetrachloride	7.795	117	796	6.412	ug/l #	11
76) 1,2,3-Trichloropropane	12.477	75	1693	51.183	ug/l #	100
81) trans-1,4-Dichloro-2-b...	12.477	75	1693	109.539	ug/l #	7
87) 1,3-Dichlorobenzene	13.440	146	108	1.127	ug/l #	40
88) 1,4-Dichlorobenzene	13.440	146	108	1.124	ug/l #	39
95) Naphthalene	15.232	128	172	5.278	ug/l #	69

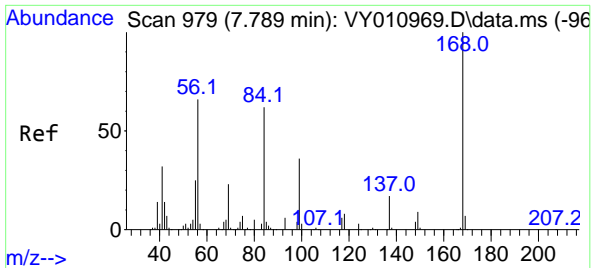
(#) = qualifier out of range (m) = manual integration (+) = signals summed

Data Path : Z:\voasrv\HPCHEM1\MSVOA_Y\Data\VY110122\
 Data File : VY011221.D
 Acq On : 01 Nov 2022 14:57
 Operator : KP/MD
 Sample : N5316-06RE
 Misc : 8.51g/5.0mL/MSVOA_Y/SOIL
 ALS Vial : 15 Sample Multiplier: 1

Instrument :
 MSVOA_Y
 ClientSampleId :
 TOTAL-VOC-GRAB-6-NE-QUARTERRE

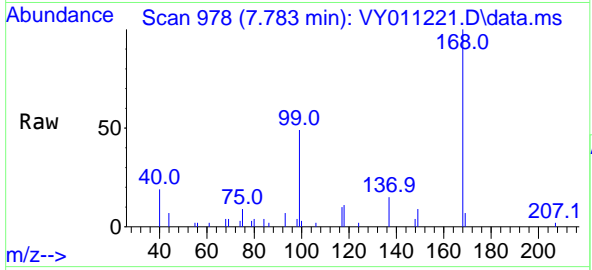
Quant Time: Nov 01 15:11:45 2022
 Quant Method : Z:\voasrv\HPCHEM1\MSVOA_Y\methods\82Y110122S.M
 Quant Title : SW846 8260
 QLast Update : Tue Nov 01 11:56:18 2022
 Response via : Initial Calibration



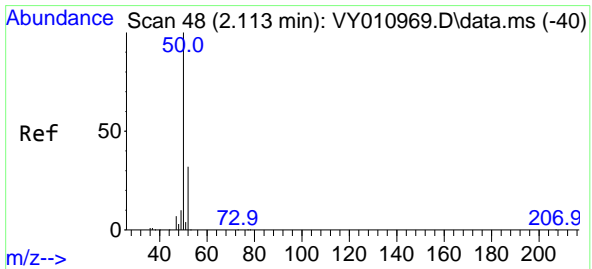
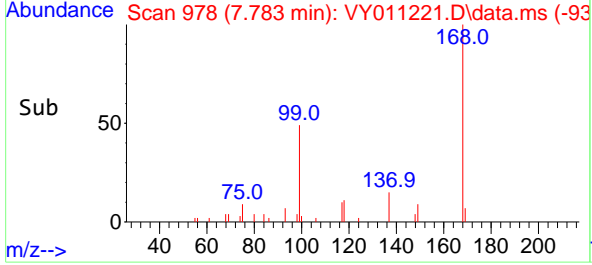
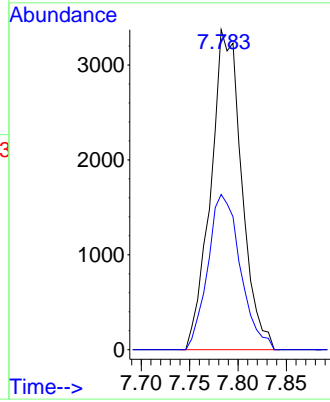


#1
 Pentafluorobenzene
 Concen: 50.000 ug/l
 RT: 7.783 min Scan# 91
 Delta R.T. -0.006 min
 Lab File: VY011221.D
 Acq: 01 Nov 2022 14:57

Instrument :
 MSVOA_Y
 ClientSampleId :
 TOTAL-VOC-GRAB-6-NE-QUARTERRE

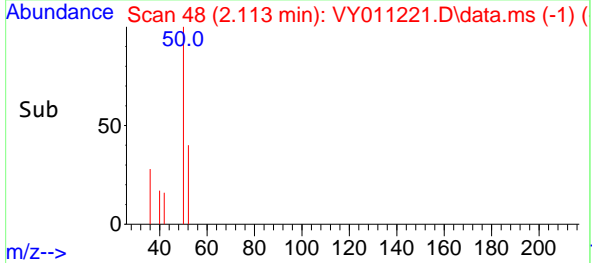
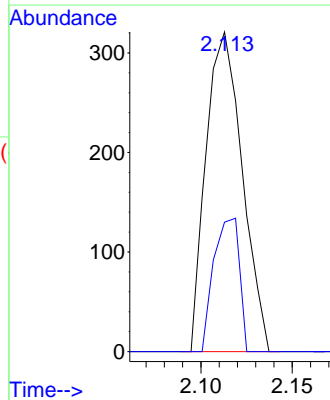
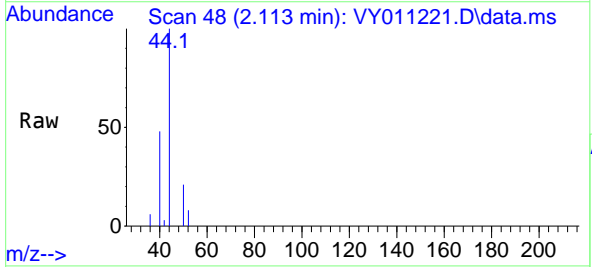


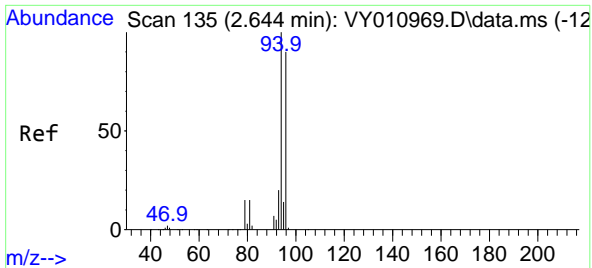
Tgt Ion:168 Resp: 7479
 Ion Ratio Lower Upper
 168 100
 99 48.5 46.9 70.3



#3
 Chloromethane
 Concen: 5.342 ug/l
 RT: 2.113 min Scan# 48
 Delta R.T. -0.000 min
 Lab File: VY011221.D
 Acq: 01 Nov 2022 14:57

Tgt Ion: 50 Resp: 443
 Ion Ratio Lower Upper
 50 100
 52 40.5 24.6 37.0#

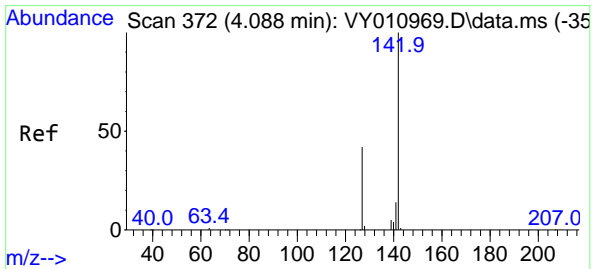
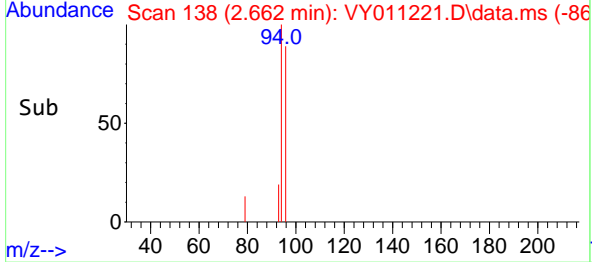
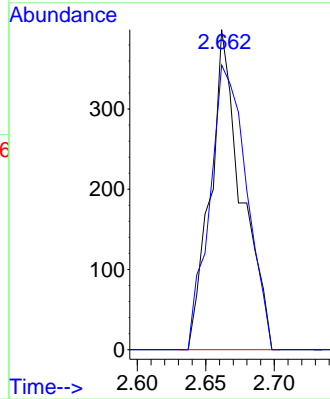
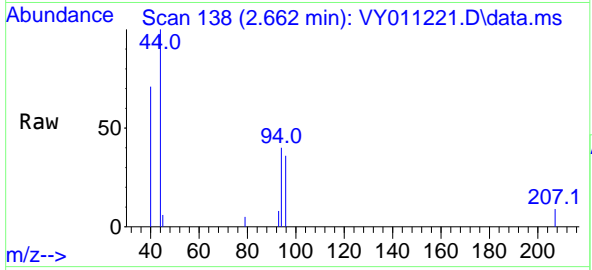




#5
 Bromomethane
 Concen: 10.194 ug/l
 RT: 2.662 min Scan# 11
 Delta R.T. 0.018 min
 Lab File: VY011221.D
 Acq: 01 Nov 2022 14:57

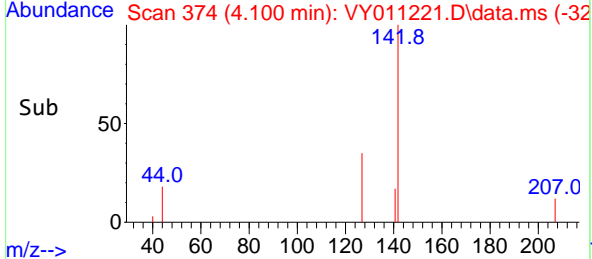
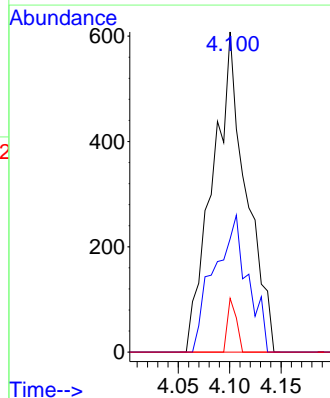
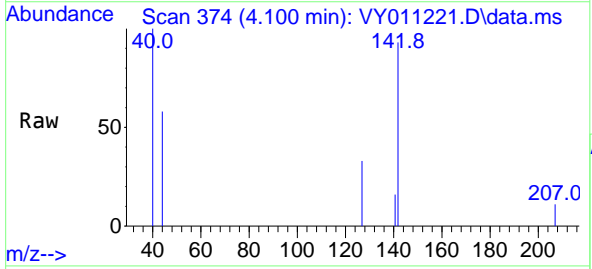
Instrument : MSVOA_Y
 ClientSampleId : TOTAL-VOC-GRAB-6-NE-QUARTERRE

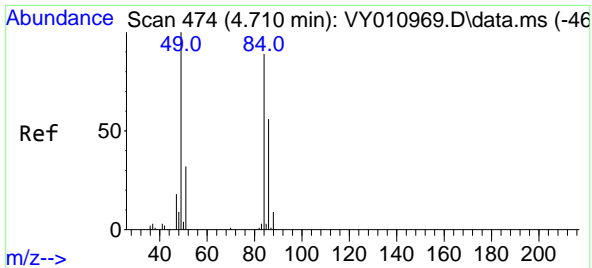
Tgt Ion: 94 Resp: 630
 Ion Ratio Lower Upper
 94 100
 96 89.0 73.5 110.3



#10
 Methyl Iodide
 Concen: 13.019 ug/l
 RT: 4.100 min Scan# 374
 Delta R.T. 0.012 min
 Lab File: VY011221.D
 Acq: 01 Nov 2022 14:57

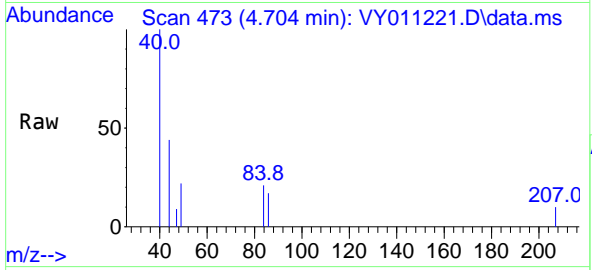
Tgt Ion:142 Resp: 1379
 Ion Ratio Lower Upper
 142 100
 127 43.0 41.5 62.3
 141 4.4 11.9 17.9#



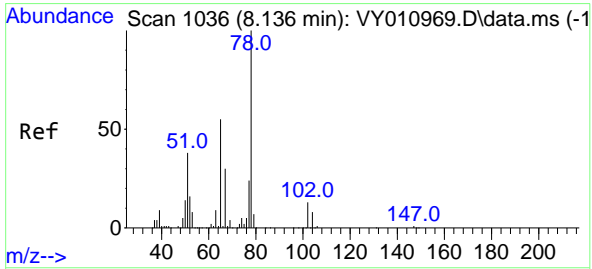
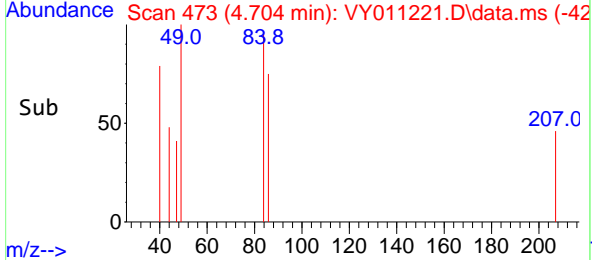
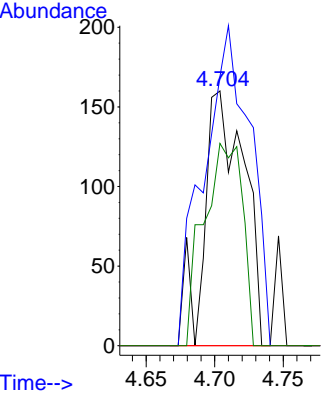


#20
Methylene Chloride
Concen: Below Cal
RT: 4.704 min Scan# 41
Delta R.T. -0.006 min
Lab File: VY011221.D
Acq: 01 Nov 2022 14:57

Instrument : MSVOA_Y
ClientSampleId : TOTAL-VOC-GRAB-6-NE-QUARTERRE

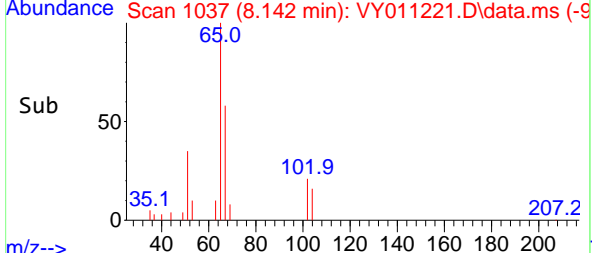
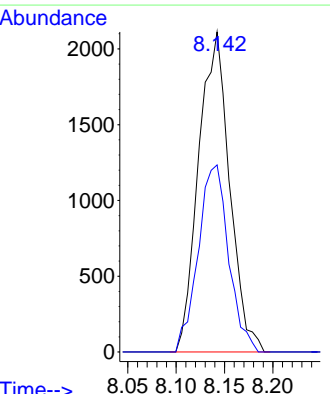
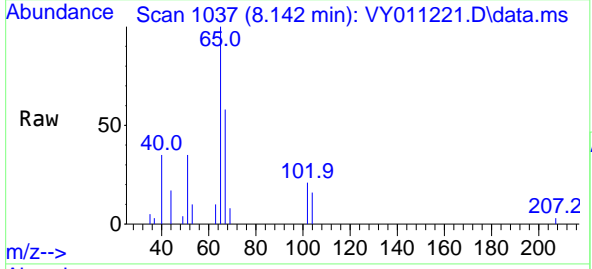


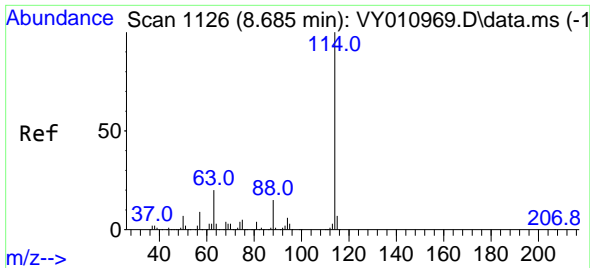
Tgt Ion: 84 Resp: 327
Ion Ratio Lower Upper
84 100
49 105.6 114.4 171.6#
51 0.0 35.3 52.9#
86 79.4 53.7 80.5



#33
1,2-Dichloroethane-d4
Concen: 58.821 ug/l
RT: 8.142 min Scan# 1037
Delta R.T. 0.006 min
Lab File: VY011221.D
Acq: 01 Nov 2022 14:57

Tgt Ion: 65 Resp: 4705
Ion Ratio Lower Upper
65 100
67 57.4 0.0 99.4



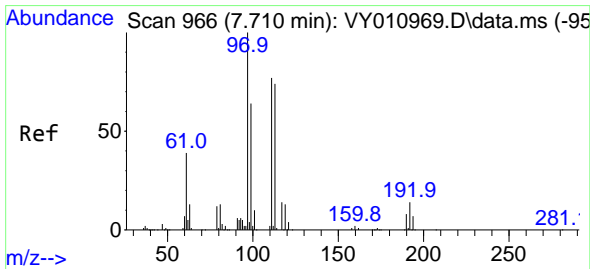
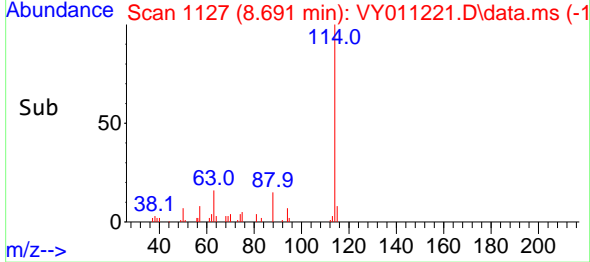
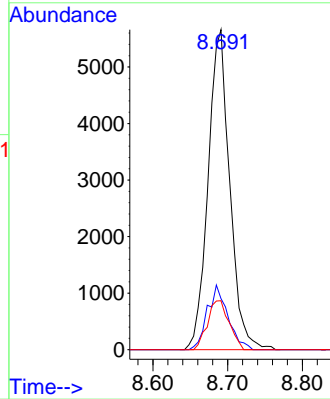
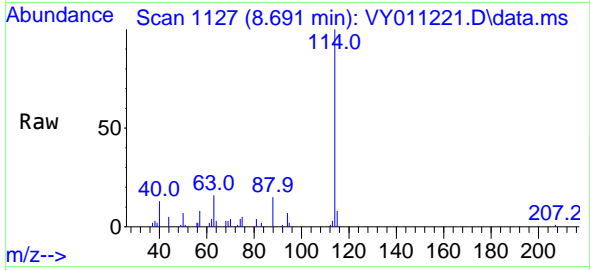


#34
 1,4-Difluorobenzene
 Concen: 50.000 ug/l
 RT: 8.691 min Scan# 1126
 Delta R.T. 0.006 min
 Lab File: VY011221.D
 Acq: 01 Nov 2022 14:57

Instrument : MSVOA_Y
 ClientSampleId : TOTAL-VOC-GRAB-6-NE-QUARTERRE

Tgt Ion:114 Resp: 11405

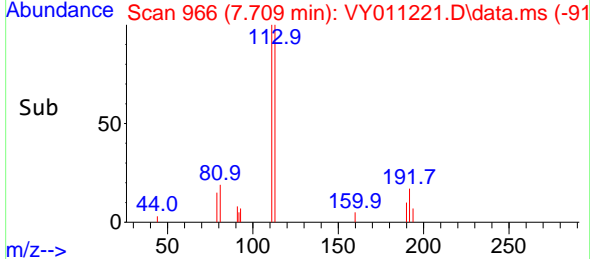
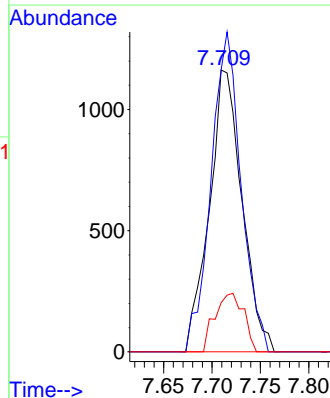
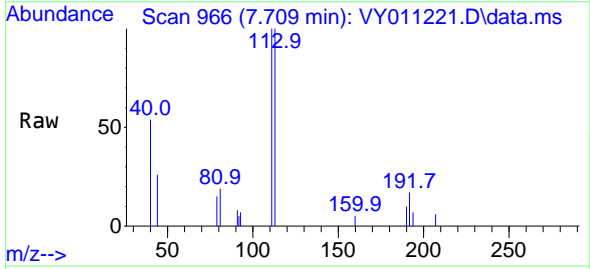
Ion	Ratio	Lower	Upper
114	100		
63	16.0	0.0	43.2
88	15.3	0.0	31.8

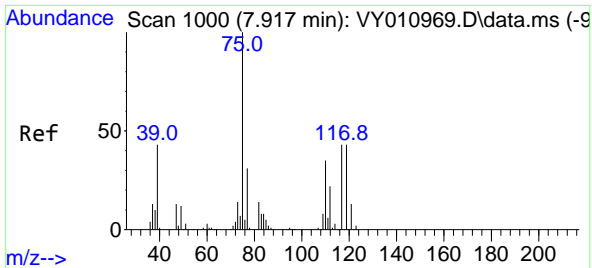


#35
 Dibromofluoromethane
 Concen: 37.283 ug/l
 RT: 7.709 min Scan# 966
 Delta R.T. -0.001 min
 Lab File: VY011221.D
 Acq: 01 Nov 2022 14:57

Tgt Ion:113 Resp: 2732

Ion	Ratio	Lower	Upper
113	100		
111	104.3	82.6	124.0
192	18.2	17.6	26.4



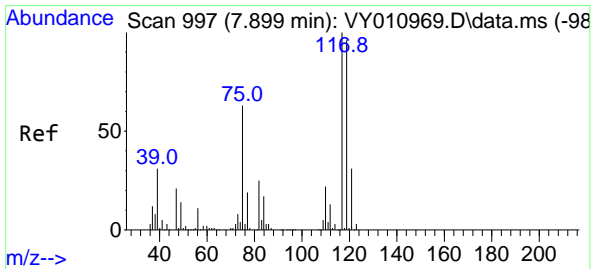
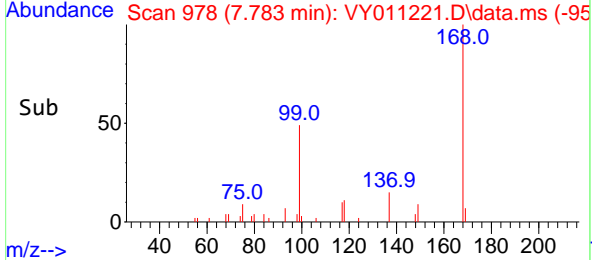
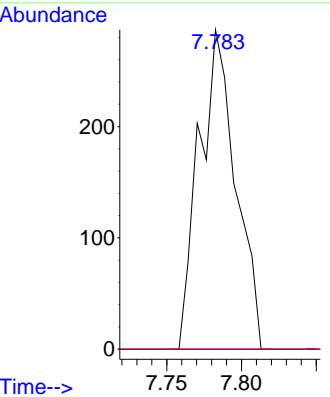
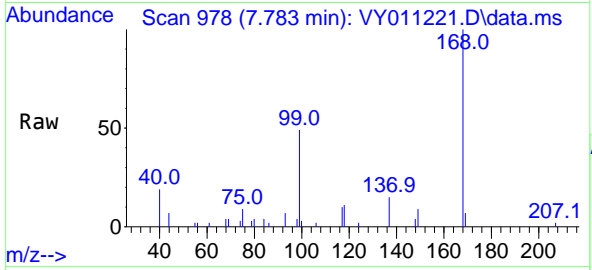


#36
 1,1-Dichloropropene
 Concen: 4.078 ug/l
 RT: 7.783 min Scan# 91
 Delta R.T. -0.134 min
 Lab File: VY011221.D
 Acq: 01 Nov 2022 14:57

Instrument : MSVOA_Y
 ClientSampleId : TOTAL-VOC-GRAB-6-NE-QUARTERRE

Tgt Ion: 75 Resp: 488

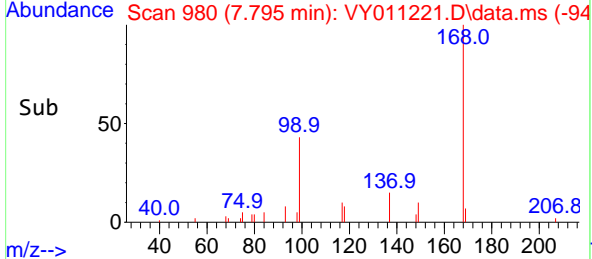
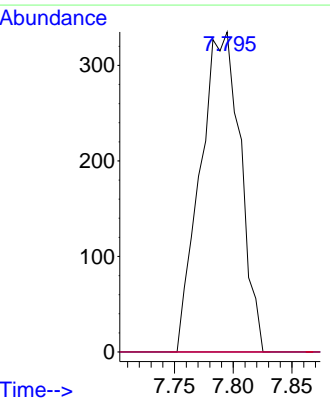
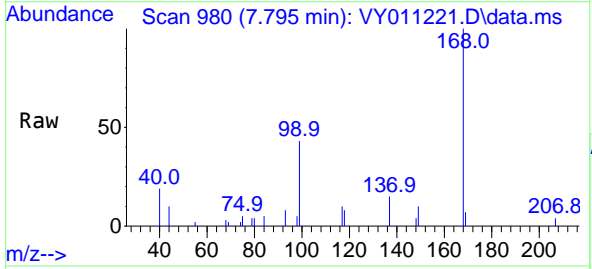
Ion	Ratio	Lower	Upper
75	100		
110	0.0	17.1	51.2#
77	0.0	24.4	36.6#

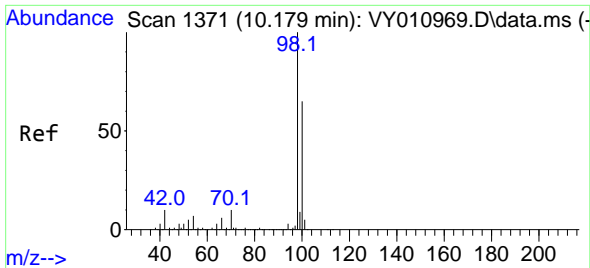


#38
 Carbon Tetrachloride
 Concen: 6.412 ug/l
 RT: 7.795 min Scan# 980
 Delta R.T. -0.104 min
 Lab File: VY011221.D
 Acq: 01 Nov 2022 14:57

Tgt Ion: 117 Resp: 796

Ion	Ratio	Lower	Upper
117	100		
119	0.0	77.9	116.9#
121	0.0	24.8	37.2#

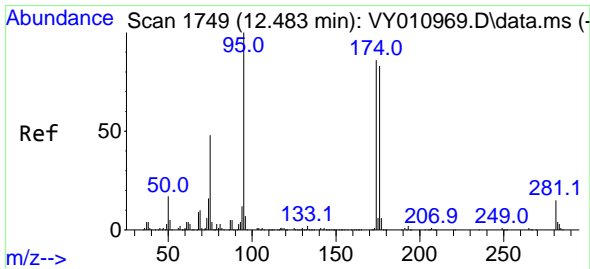
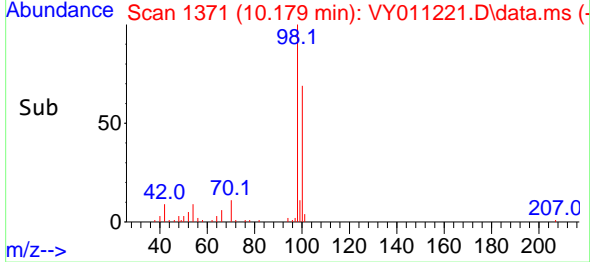
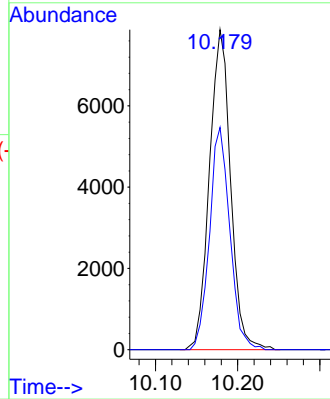
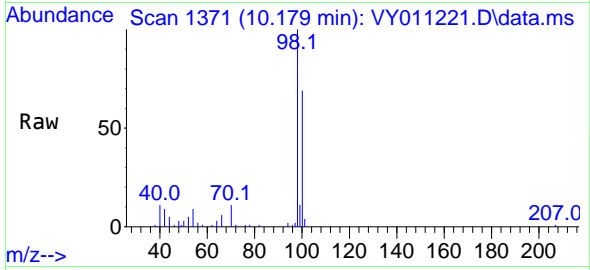




#50
 Toluene-d8
 Concen: 49.441 ug/l
 RT: 10.179 min Scan# 11
 Delta R.T. -0.001 min
 Lab File: VY011221.D
 Acq: 01 Nov 2022 14:57

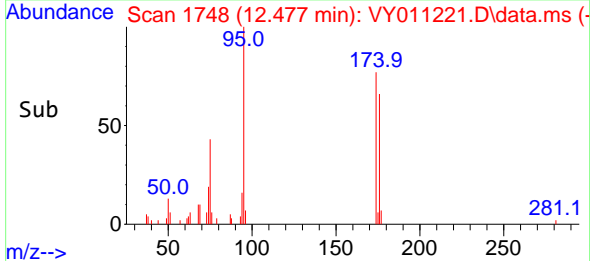
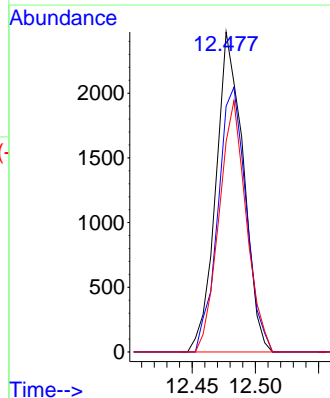
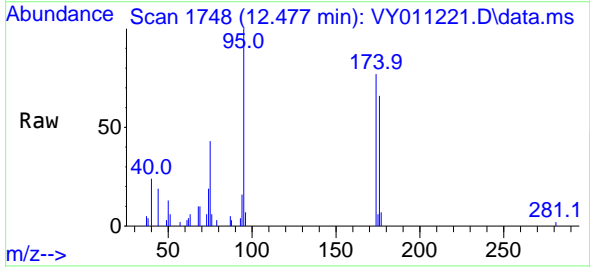
Instrument : MSVOA_Y
 ClientSampleId : TOTAL-VOC-GRAB-6-NE-QUARTERRE

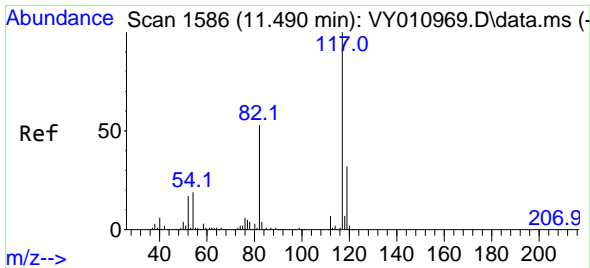
Tgt Ion: 98 Resp: 14066
 Ion Ratio Lower Upper
 98 100
 100 66.7 50.2 75.2



#62
 4-Bromofluorobenzene
 Concen: 37.654 ug/l
 RT: 12.477 min Scan# 1748
 Delta R.T. -0.006 min
 Lab File: VY011221.D
 Acq: 01 Nov 2022 14:57

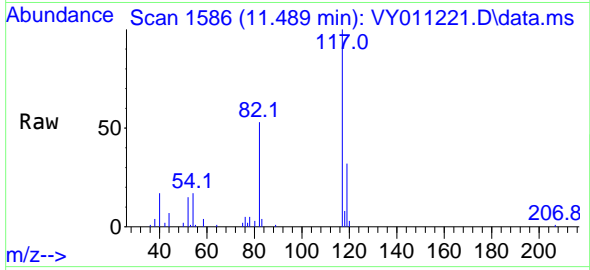
Tgt Ion: 95 Resp: 3719
 Ion Ratio Lower Upper
 95 100
 174 85.6 0.0 177.0
 176 77.9 0.0 175.8





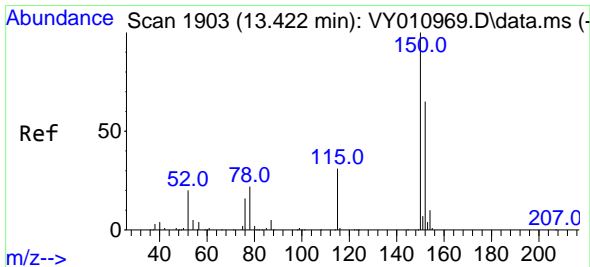
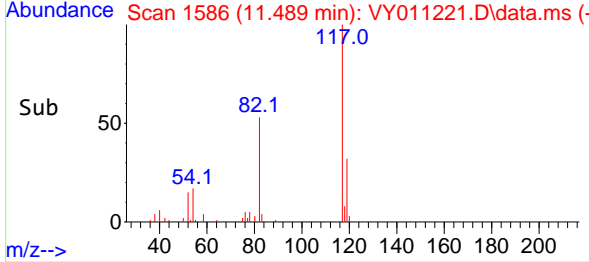
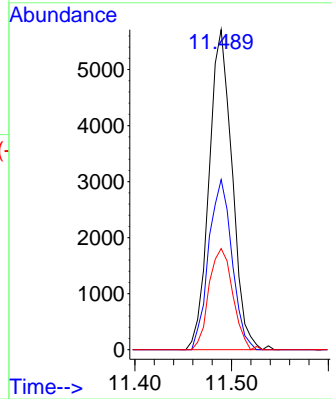
#63
 Chlorobenzene-d5
 Concen: 50.000 ug/l
 RT: 11.489 min Scan# 1117
 Delta R.T. -0.001 min
 Lab File: VY011221.D
 Acq: 01 Nov 2022 14:57

Instrument : MSVOA_Y
 ClientSampleId : TOTAL-VOC-GRAB-6-NE-QUARTERRE

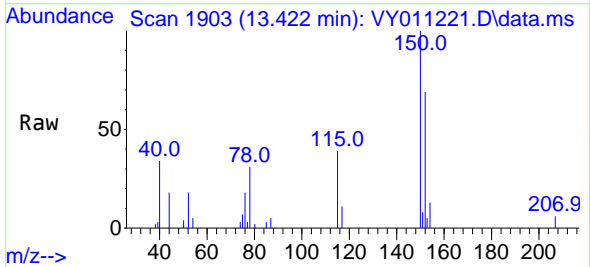


Tgt Ion:117 Resp: 9460

Ion	Ratio	Lower	Upper
117	100		
82	53.1	43.0	64.4
119	31.6	25.4	38.0

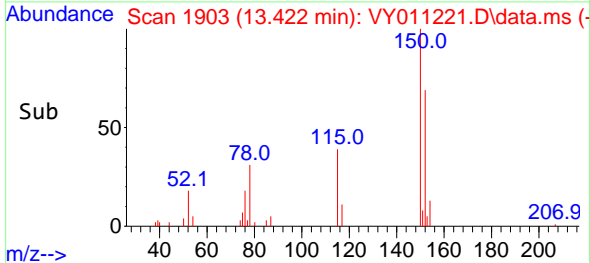
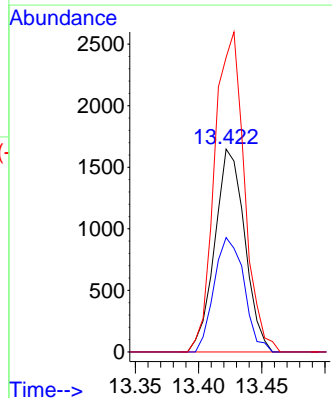


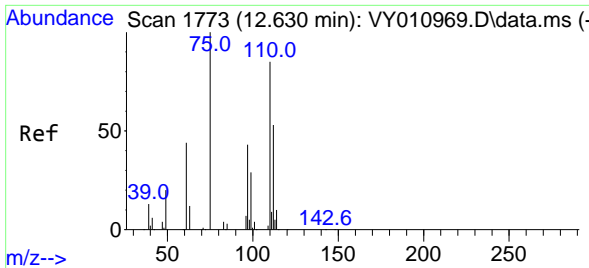
#72
 1,4-Dichlorobenzene-d4
 Concen: 50.000 ug/l
 RT: 13.422 min Scan# 1903
 Delta R.T. -0.000 min
 Lab File: VY011221.D
 Acq: 01 Nov 2022 14:57



Tgt Ion:152 Resp: 2717

Ion	Ratio	Lower	Upper
152	100		
115	56.4	28.2	84.7
150	156.6	0.0	347.6



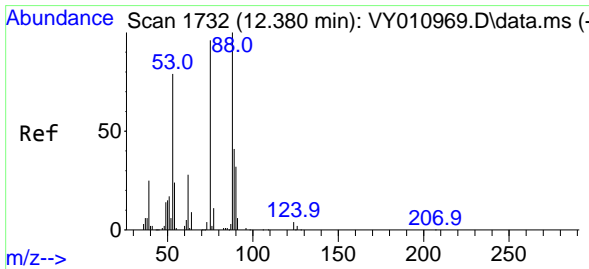
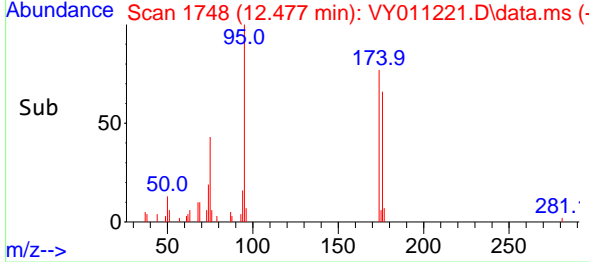
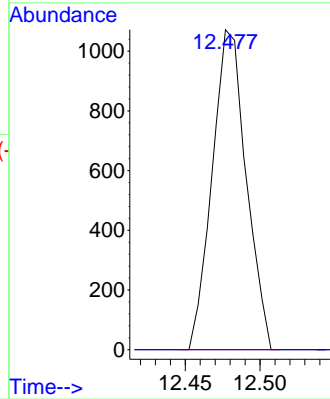
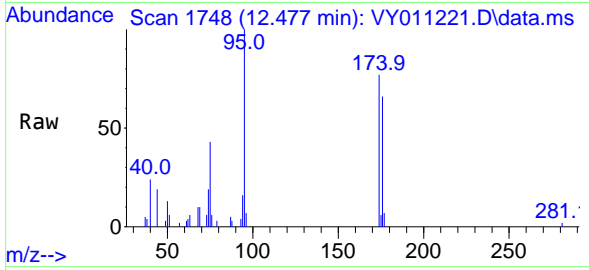


#76
 1,2,3-Trichloropropane
 Concen: 51.183 ug/l
 RT: 12.477 min Scan# 1748
 Delta R.T. -0.153 min
 Lab File: VY011221.D
 Acq: 01 Nov 2022 14:57

Instrument : MSVOA_Y
 ClientSampleId : TOTAL-VOC-GRAB-6-NE-QUARTERRE

Tgt Ion: 75 Resp: 1693

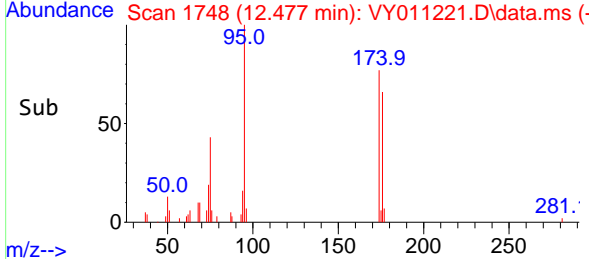
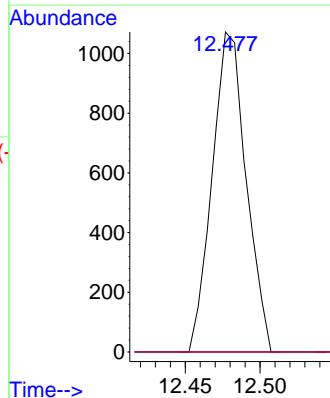
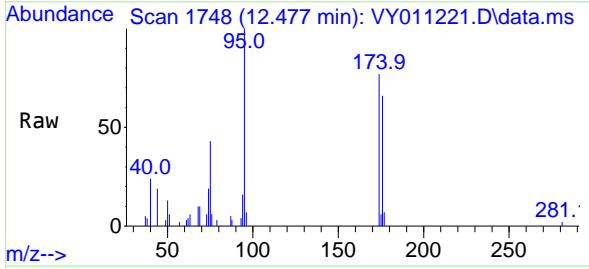
Ion	Ratio	Lower	Upper
75	100		
77	0.0	0.0	0.0

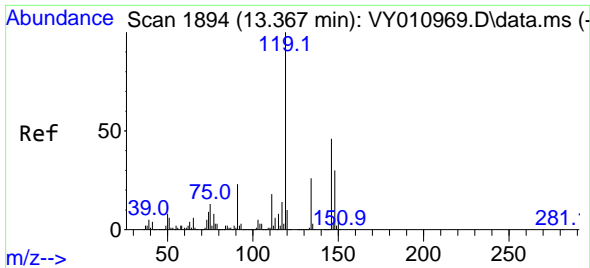


#81
 trans-1,4-Dichloro-2-butene
 Concen: 109.539 ug/l
 RT: 12.477 min Scan# 1748
 Delta R.T. 0.097 min
 Lab File: VY011221.D
 Acq: 01 Nov 2022 14:57

Tgt Ion: 75 Resp: 1693

Ion	Ratio	Lower	Upper
75	100		
53	0.0	85.3	127.9#
89	0.0	37.0	55.4#



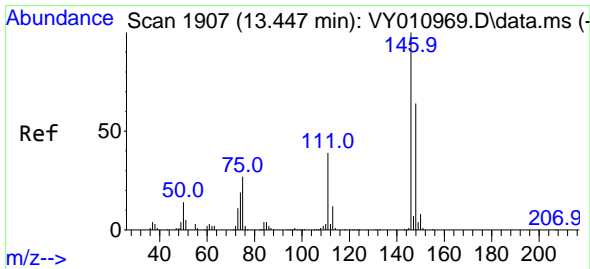
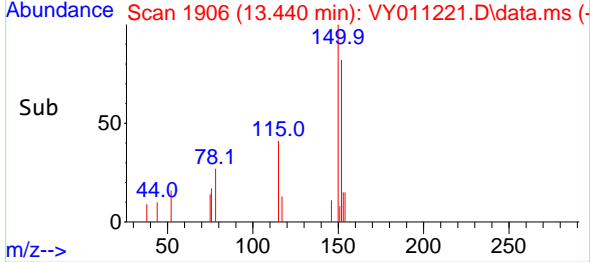
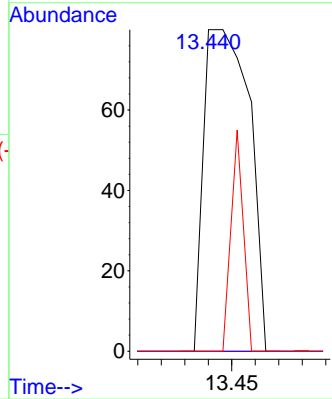
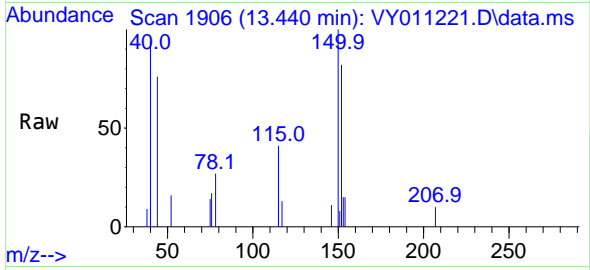


#87
 1,3-Dichlorobenzene
 Concen: 1.127 ug/l
 RT: 13.440 min Scan# 1906
 Delta R.T. 0.073 min
 Lab File: VY011221.D
 Acq: 01 Nov 2022 14:57

Instrument : MSVOA_Y
 ClientSampleId : TOTAL-VOC-GRAB-6-NE-QUARTERRE

Tgt Ion:146 Resp: 108

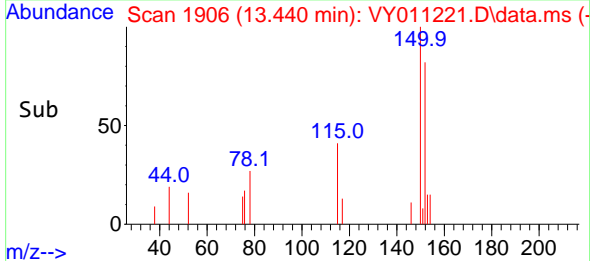
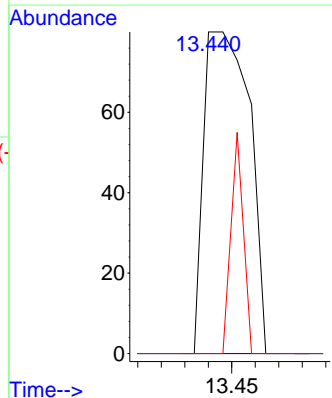
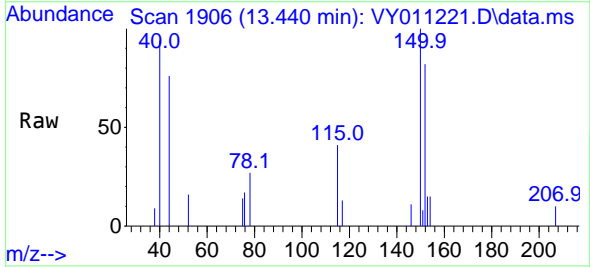
Ion	Ratio	Lower	Upper
146	100		
111	0.0	19.5	58.5#
148	18.5	31.6	95.0#

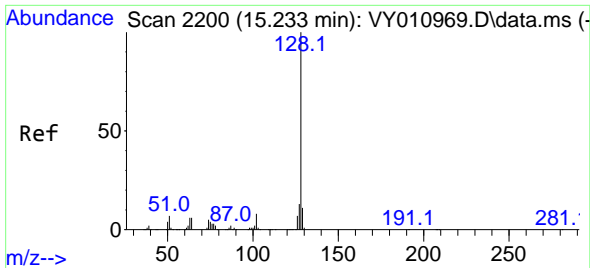


#88
 1,4-Dichlorobenzene
 Concen: 1.124 ug/l
 RT: 13.440 min Scan# 1906
 Delta R.T. -0.007 min
 Lab File: VY011221.D
 Acq: 01 Nov 2022 14:57

Tgt Ion:146 Resp: 108

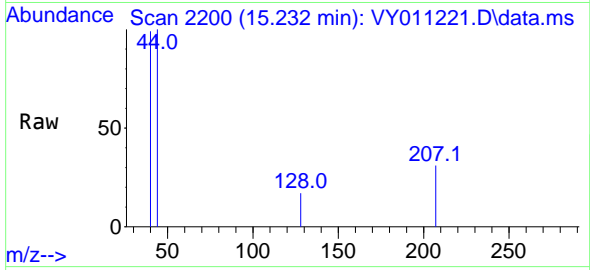
Ion	Ratio	Lower	Upper
146	100		
111	0.0	19.3	57.8#
148	18.5	32.6	97.8#





#95
 Naphthalene
 Concen: 5.278 ug/l
 RT: 15.232 min Scan# 21
 Delta R.T. -0.001 min
 Lab File: VY011221.D
 Acq: 01 Nov 2022 14:57

Instrument : MSVOA_Y
 ClientSampleId : TOTAL-VOC-GRAB-6-NE-QUARTERRE



Tgt Ion:128 Resp: 172

Ion	Ratio	Lower	Upper
128	100		
127	0.0	11.0	16.4#
129	0.0	8.4	12.6#

