

Data Path : Z:\voasrv\HPCHEM1\MSVOA_Y\Data\VY111522\
 Data File : VY011454.D
 Acq On : 15 Nov 2022 13:43
 Operator : KP/MD
 Sample : N5582-04
 Misc : 5.05g/5.0mL/MSVOA_Y/SOIL
 ALS Vial : 7 Sample Multiplier: 1

Instrument :
 MSVOA_Y
 ClientSampleId :
 31979

Quant Time: Nov 15 15:02:19 2022
 Quant Method : Z:\voasrv\HPCHEM1\MSVOA_Y\methods\82Y111022S.M
 Quant Title : SW846 8260
 QLast Update : Thu Nov 10 17:47:26 2022
 Response via : Initial Calibration

Compound	R.T.	QIon	Response	Conc	Units	Dev(Min)

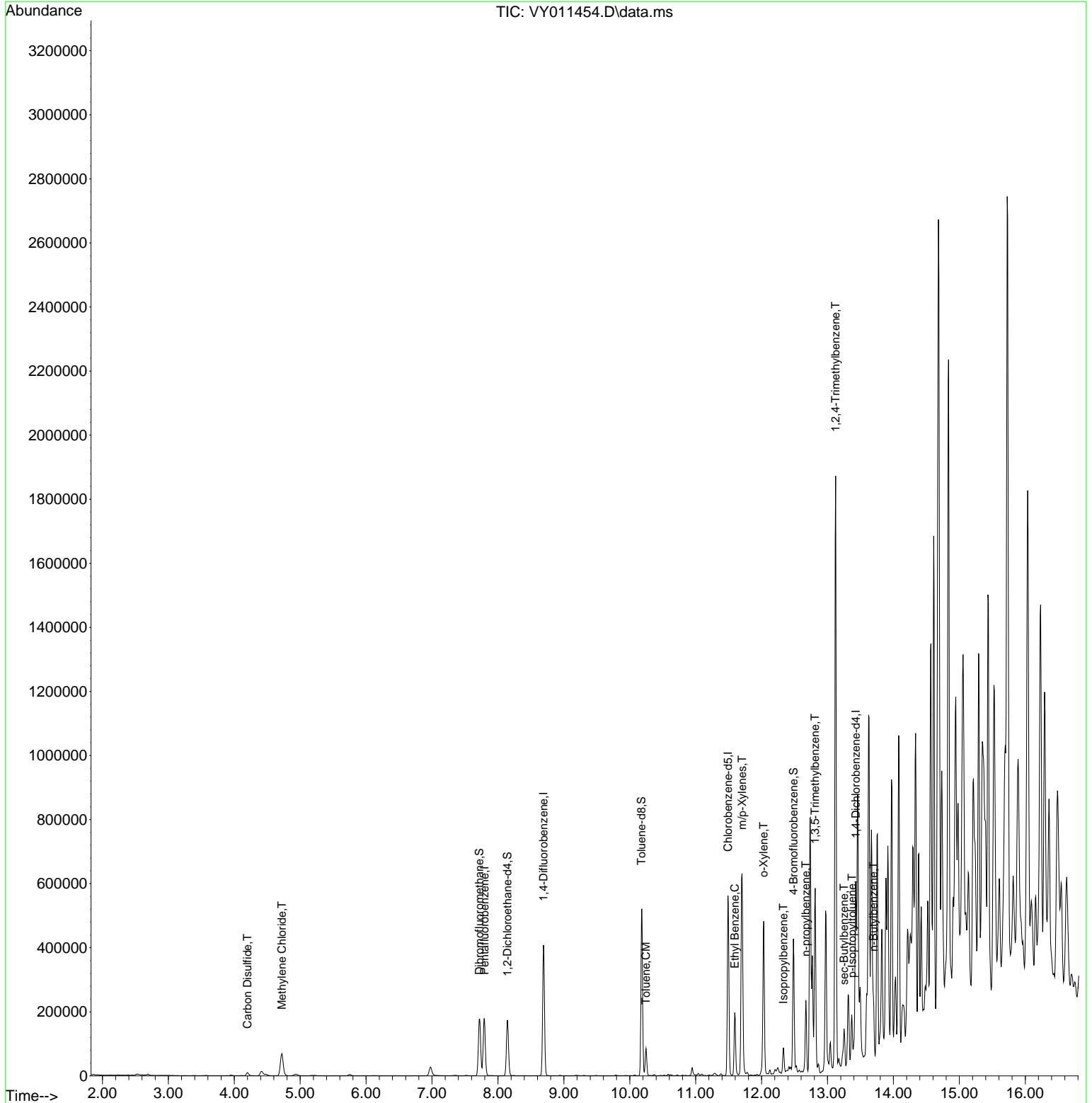
Internal Standards						
1) Pentafluorobenzene	7.795	168	147967	50.000	ug/l	0.00
34) 1,4-Difluorobenzene	8.691	114	370405	50.000	ug/l	0.00
63) Chlorobenzene-d5	11.489	117	329876	50.000	ug/l	0.00
72) 1,4-Dichlorobenzene-d4	13.428	152	135692	50.000	ug/l	0.00
System Monitoring Compounds						
33) 1,2-Dichloroethane-d4	8.142	65	132207	106.626	ug/l	0.00
Spiked Amount	50.000	Range	50 - 163	Recovery	=	213.260%#
35) Dibromofluoromethane	7.716	113	132194	63.682	ug/l	0.00
Spiked Amount	50.000	Range	54 - 147	Recovery	=	127.360%
50) Toluene-d8	10.179	98	360968	45.518	ug/l	0.00
Spiked Amount	50.000	Range	49 - 140	Recovery	=	91.040%
62) 4-Bromofluorobenzene	12.483	95	127693	46.165	ug/l	0.00
Spiked Amount	50.000	Range	25 - 144	Recovery	=	92.320%
Target Compounds						
						Qvalue
17) Carbon Disulfide	4.198	76	18855	4.768	ug/l	100
20) Methylene Chloride	4.722	84	57924	29.495	ug/l #	75
52) Toluene	10.246	92	36770	5.985	ug/l	96
67) Ethyl Benzene	11.593	91	133937	11.610	ug/l	97
68) m/p-Xylenes	11.703	106	202670	44.809	ug/l	93
69) o-Xylene	12.032	106	129199	30.286	ug/l	93
73) Isopropylbenzene	12.331	105	48451	5.166	ug/l	98
78) n-propylbenzene	12.672	91	169236	15.123	ug/l	98
80) 1,3,5-Trimethylbenzene	12.812	105	222353	28.109	ug/l	96
84) 1,2,4-Trimethylbenzene	13.123	105	994985	128.145	ug/l	98
85) sec-Butylbenzene	13.251	105	70286	6.982	ug/l	89
86) p-Isopropyltoluene	13.373	119	53454	6.334	ug/l	96
89) n-Butylbenzene	13.696	91	93036	12.270	ug/l #	75

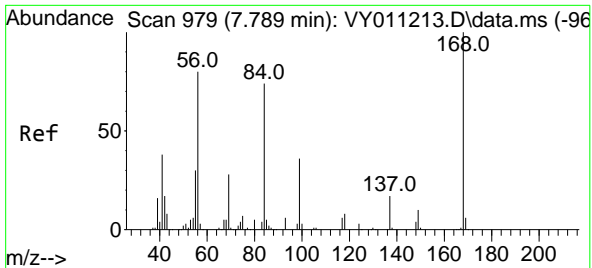
(#) = qualifier out of range (m) = manual integration (+) = signals summed

Data Path : Z:\voasrv\HPCHEM1\MSVOA_Y\Data\VY111522\
 Data File : VY011454.D
 Acq On : 15 Nov 2022 13:43
 Operator : KP/MD
 Sample : N5582-04
 Misc : 5.05g/5.0mL/MSVOA_Y/SOIL
 ALS Vial : 7 Sample Multiplier: 1

Instrument :
 MSVOA_Y
 ClientSampleId :
 31979

Quant Time: Nov 15 15:02:19 2022
 Quant Method : Z:\voasrv\HPCHEM1\MSVOA_Y\methods\82Y111022S.M
 Quant Title : SW846 8260
 QLast Update : Thu Nov 10 17:47:26 2022
 Response via : Initial Calibration

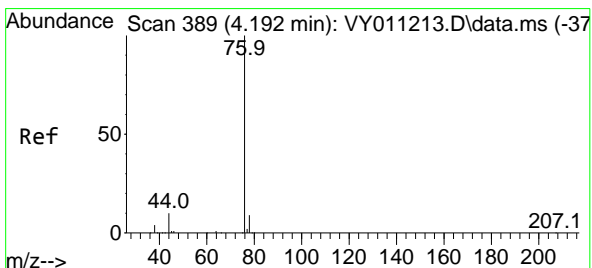
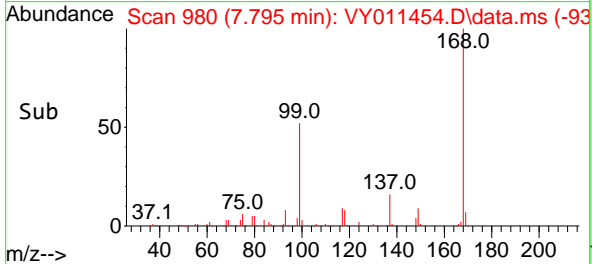
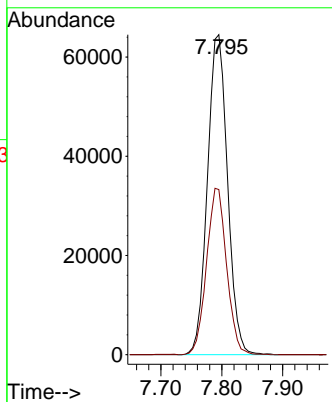
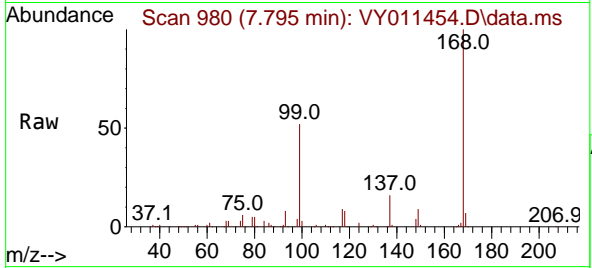




#1
 Pentafluorobenzene
 Concen: 50.000 ug/l
 RT: 7.795 min Scan# 91
 Delta R.T. 0.006 min
 Lab File: VY011454.D
 Acq: 15 Nov 2022 13:43

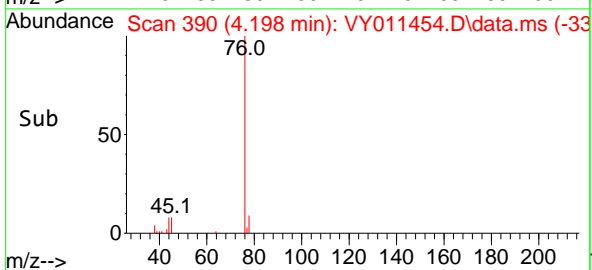
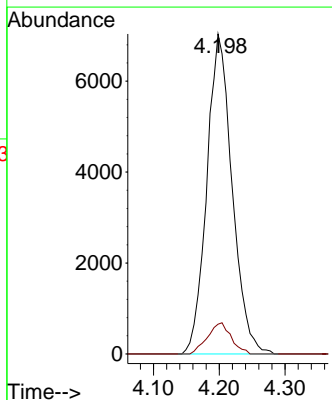
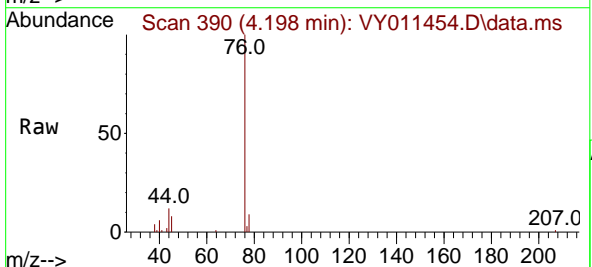
Instrument :
 MSVOA_Y
 ClientSampleId :
 31979

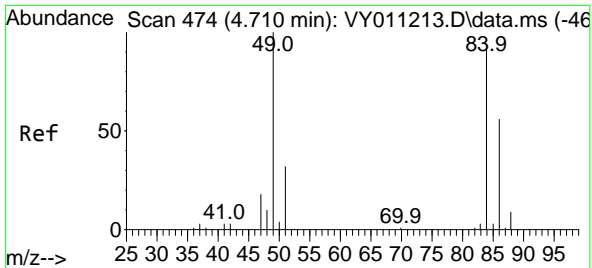
Tgt Ion:168 Resp: 147967
 Ion Ratio Lower Upper
 168 100
 99 51.6 46.9 70.3



#17
 Carbon Disulfide
 Concen: 4.768 ug/l
 RT: 4.198 min Scan# 390
 Delta R.T. 0.012 min
 Lab File: VY011454.D
 Acq: 15 Nov 2022 13:43

Tgt Ion: 76 Resp: 18855
 Ion Ratio Lower Upper
 76 100
 78 9.3 7.4 11.0

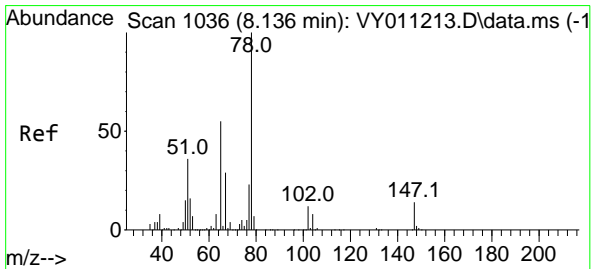
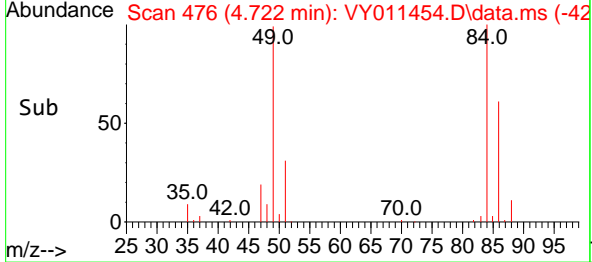
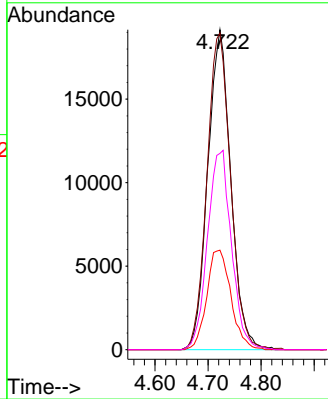
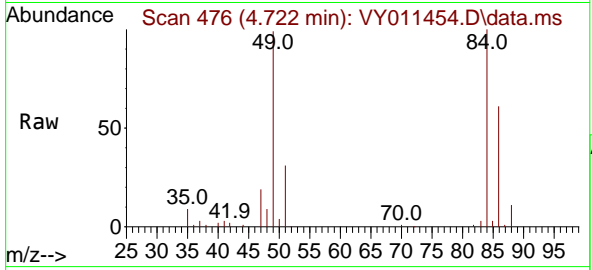




#20
 Methylene Chloride
 Concen: 29.495 ug/l
 RT: 4.722 min Scan# 41
 Delta R.T. 0.012 min
 Lab File: VY011454.D
 Acq: 15 Nov 2022 13:43

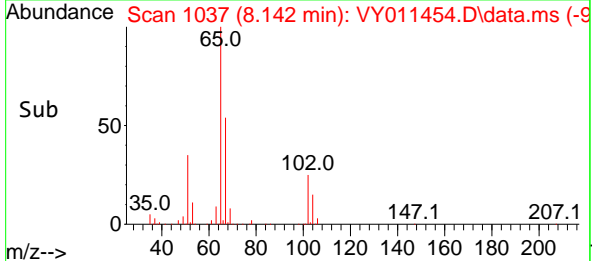
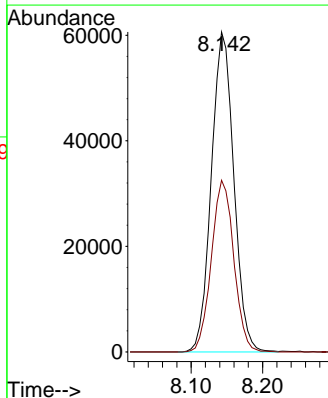
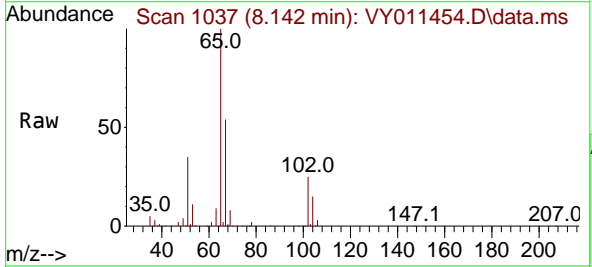
Instrument :
 MSVOA_Y
 ClientSampleId :
 31979

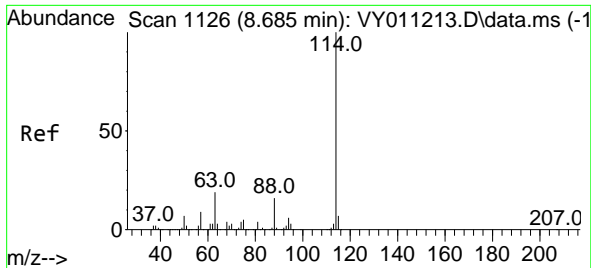
Tgt Ion	Resp	Lower	Upper
84	57924		
84	100		
49	99.0	114.4	171.6#
51	31.1	35.3	52.9#
86	61.3	53.7	80.5



#33
 1,2-Dichloroethane-d4
 Concen: 106.626 ug/l
 RT: 8.142 min Scan# 1037
 Delta R.T. 0.006 min
 Lab File: VY011454.D
 Acq: 15 Nov 2022 13:43

Tgt Ion	Resp	Lower	Upper
65	132207		
65	100		
67	53.6	0.0	99.4

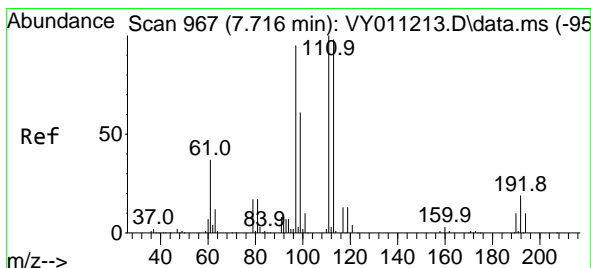
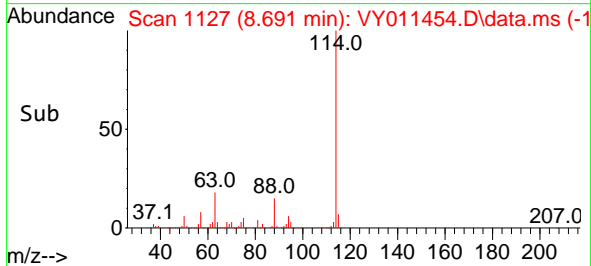
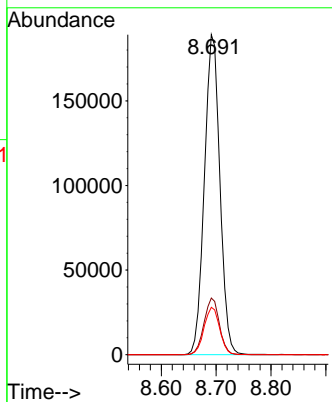
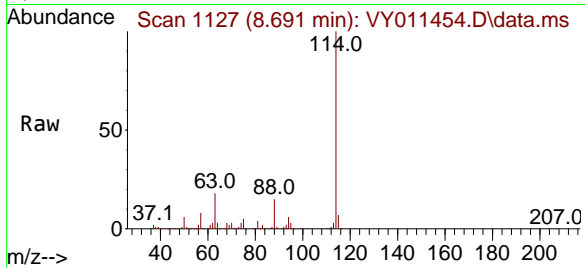




#34
 1,4-Difluorobenzene
 Concen: 50.000 ug/l
 RT: 8.691 min Scan# 1127
 Delta R.T. 0.006 min
 Lab File: VY011454.D
 Acq: 15 Nov 2022 13:43

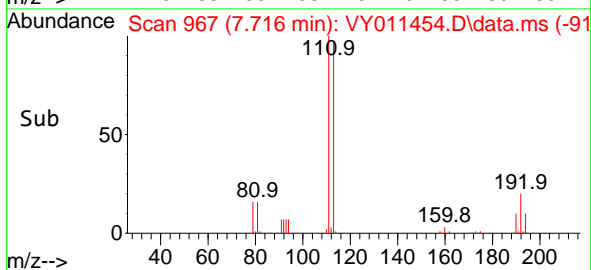
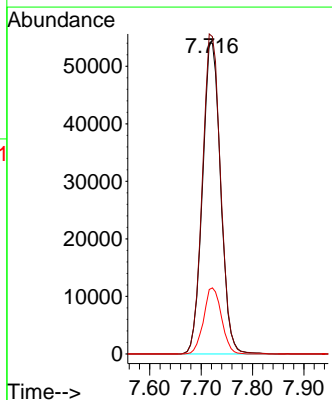
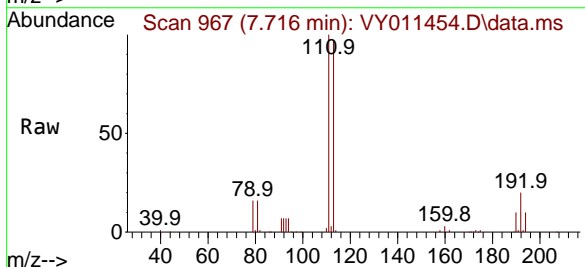
Instrument : MSVOA_Y
 ClientSampleId : 31979

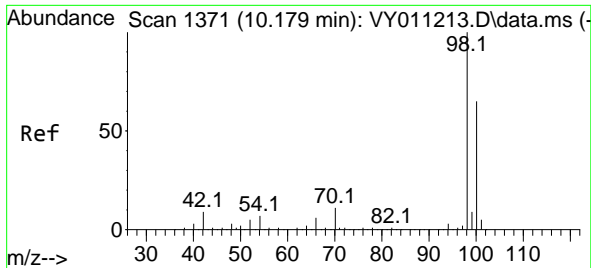
Tgt Ion	Resp	Lower	Upper
114	100		
63	17.7	0.0	43.2
88	14.8	0.0	31.8



#35
 Dibromofluoromethane
 Concen: 63.682 ug/l
 RT: 7.716 min Scan# 967
 Delta R.T. 0.006 min
 Lab File: VY011454.D
 Acq: 15 Nov 2022 13:43

Tgt Ion	Resp	Lower	Upper
113	100		
111	102.9	82.6	124.0
192	21.0	17.6	26.4

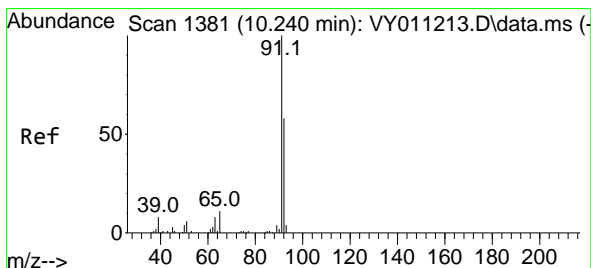
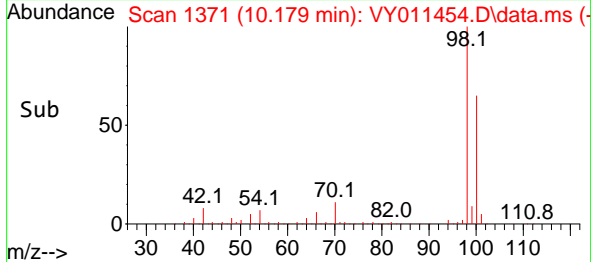
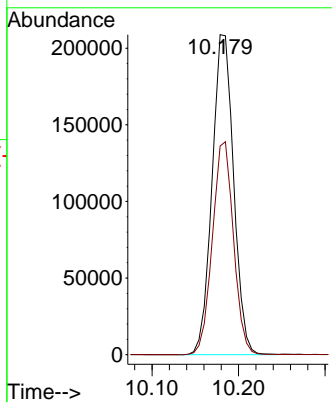
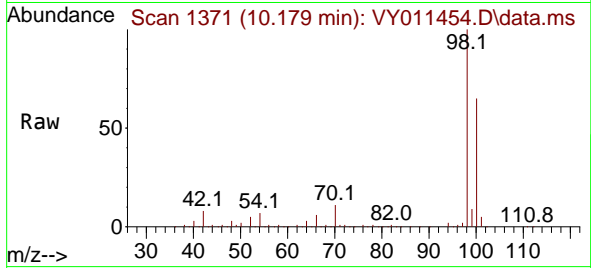




#50
 Toluene-d8
 Concen: 45.518 ug/l
 RT: 10.179 min Scan# 11
 Delta R.T. -0.000 min
 Lab File: VY011454.D
 Acq: 15 Nov 2022 13:43

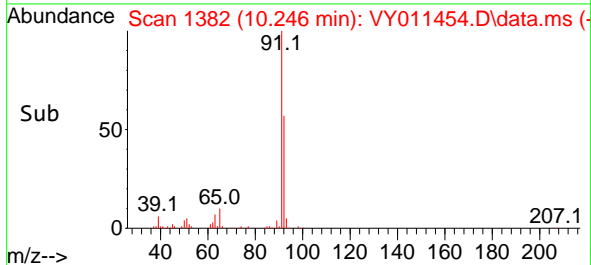
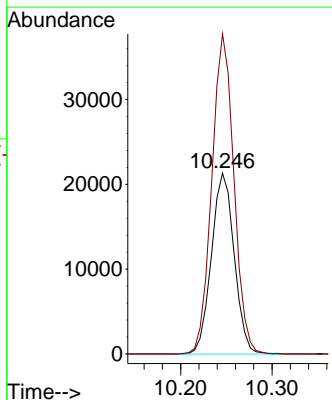
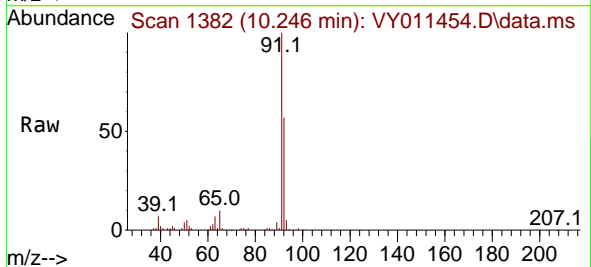
Instrument :
 MSVOA_Y
 ClientSampleId :
 31979

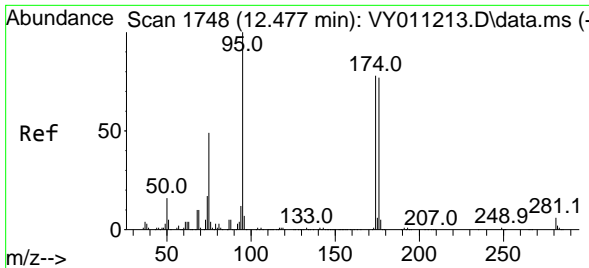
Tgt Ion: 98 Resp: 360968
 Ion Ratio Lower Upper
 98 100
 100 65.3 50.2 75.2



#52
 Toluene
 Concen: 5.985 ug/l
 RT: 10.246 min Scan# 1382
 Delta R.T. 0.006 min
 Lab File: VY011454.D
 Acq: 15 Nov 2022 13:43

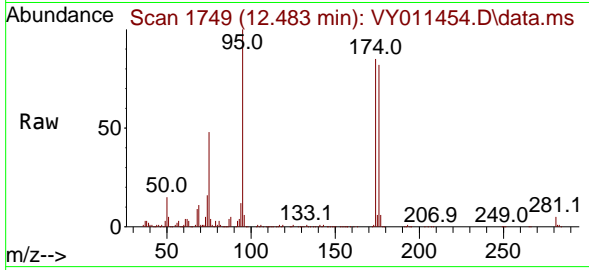
Tgt Ion: 92 Resp: 36770
 Ion Ratio Lower Upper
 92 100
 91 172.4 142.6 213.8



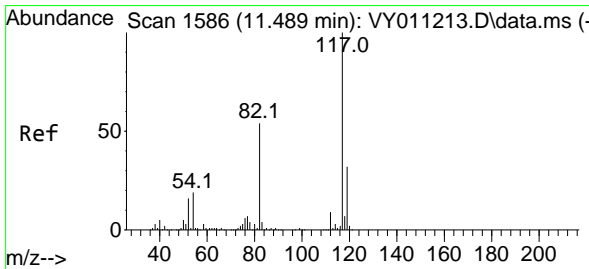
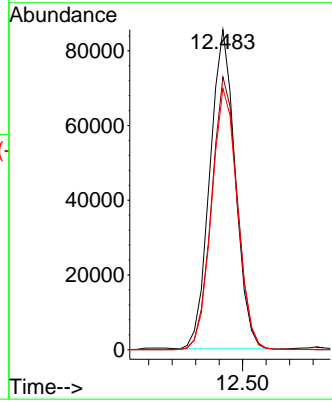
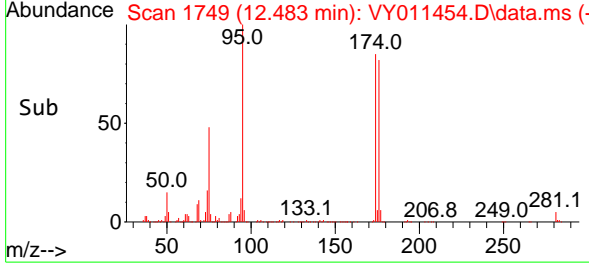


#62
 4-Bromofluorobenzene
 Concen: 46.165 ug/l
 RT: 12.483 min Scan# 11
 Delta R.T. 0.000 min
 Lab File: VY011454.D
 Acq: 15 Nov 2022 13:43

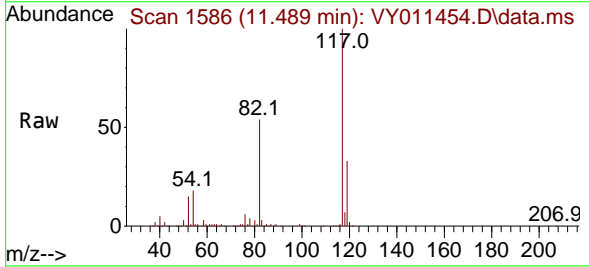
Instrument :
 MSVOA_Y
 ClientSampleId :
 31979



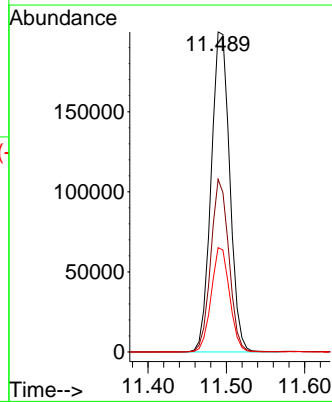
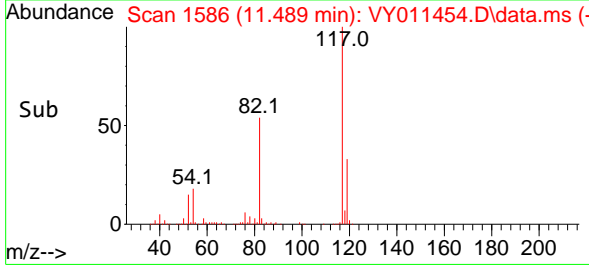
Tgt Ion: 95 Resp: 127693
 Ion Ratio Lower Upper
 95 100
 174 87.2 0.0 177.0
 176 84.1 0.0 175.8

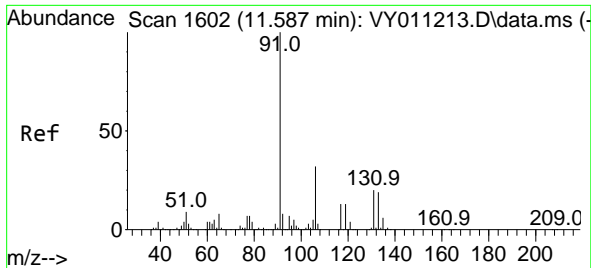


#63
 Chlorobenzene-d5
 Concen: 50.000 ug/l
 RT: 11.489 min Scan# 1586
 Delta R.T. -0.001 min
 Lab File: VY011454.D
 Acq: 15 Nov 2022 13:43



Tgt Ion: 117 Resp: 329876
 Ion Ratio Lower Upper
 117 100
 82 53.9 43.0 64.4
 119 32.6 25.4 38.0

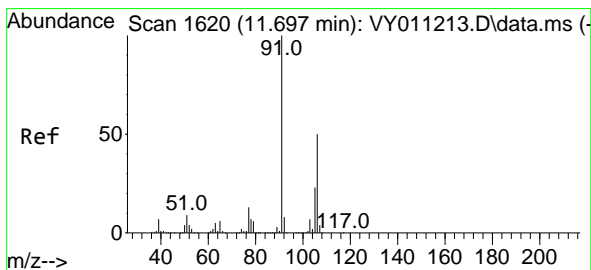
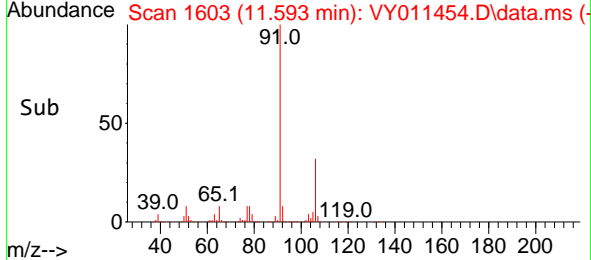
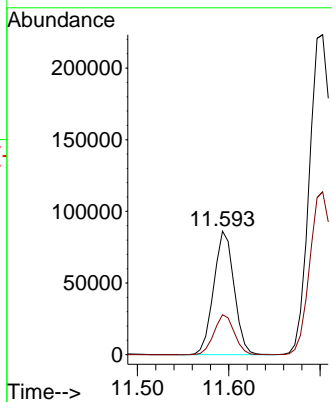
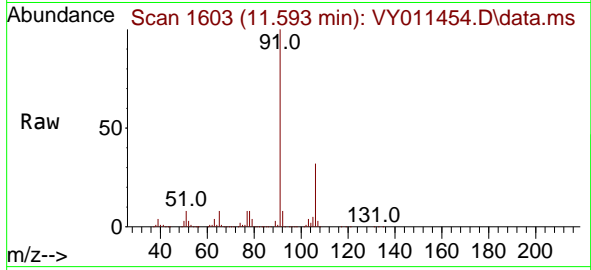




#67
 Ethyl Benzene
 Concen: 11.610 ug/l
 RT: 11.593 min Scan# 1603
 Delta R.T. 0.000 min
 Lab File: VY011454.D
 Acq: 15 Nov 2022 13:43

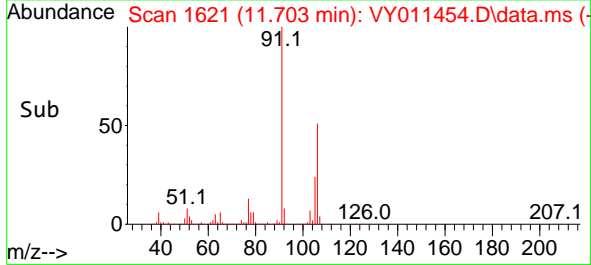
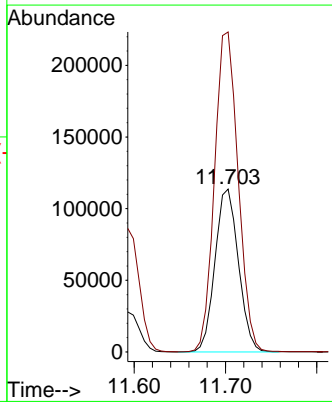
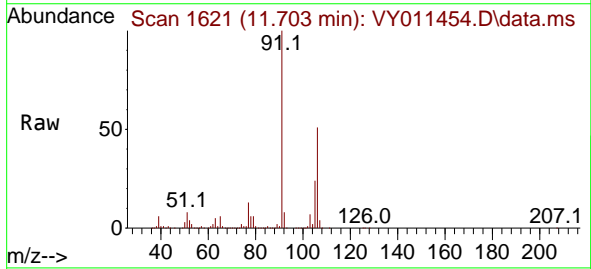
Instrument : MSVOA_Y
 ClientSampleId : 31979

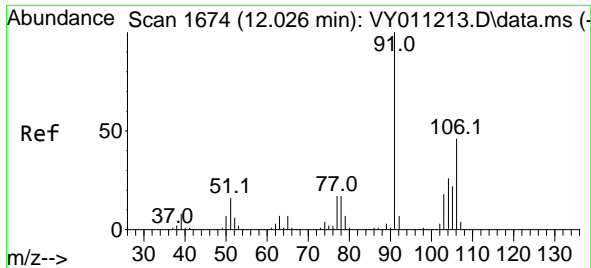
Tgt Ion: 91 Resp: 133937
 Ion Ratio Lower Upper
 91 100
 106 32.4 24.5 36.7



#68
 m/p-Xylenes
 Concen: 44.809 ug/l
 RT: 11.703 min Scan# 1621
 Delta R.T. -0.000 min
 Lab File: VY011454.D
 Acq: 15 Nov 2022 13:43

Tgt Ion:106 Resp: 202670
 Ion Ratio Lower Upper
 106 100
 91 197.7 166.6 249.8

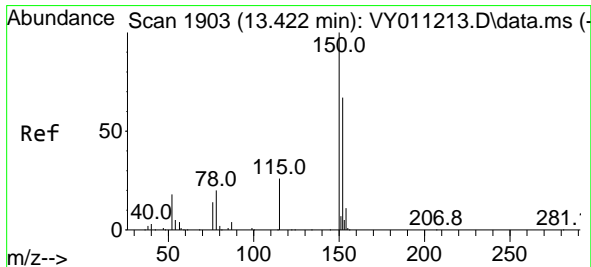
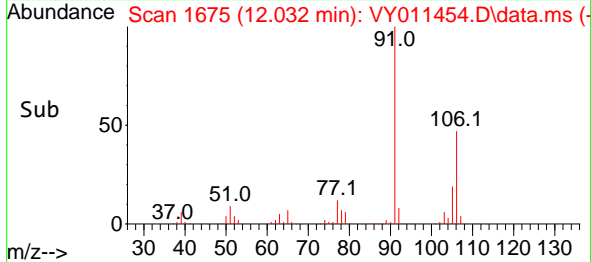
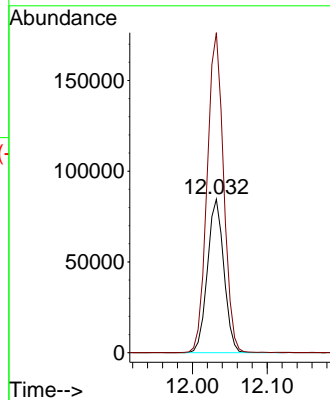
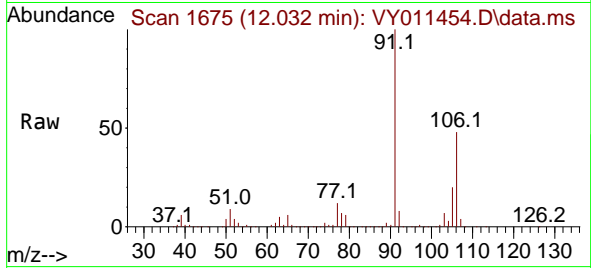




#69
 o-Xylene
 Concen: 30.286 ug/l
 RT: 12.032 min Scan# 110
 Delta R.T. 0.006 min
 Lab File: VY011454.D
 Acq: 15 Nov 2022 13:43

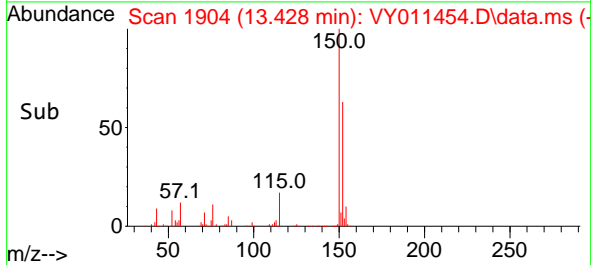
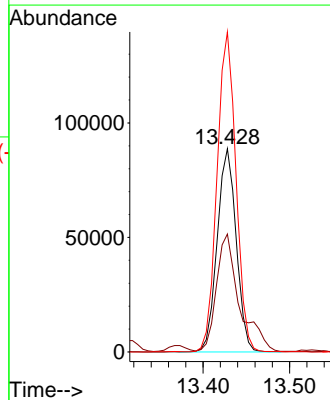
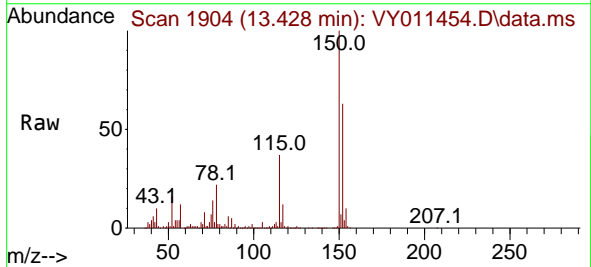
Instrument :
 MSVOA_Y
 ClientSampleId :
 31979

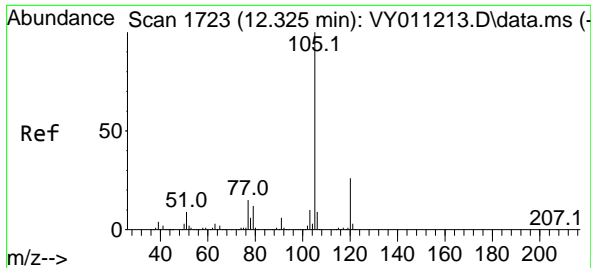
Tgt Ion:106 Resp: 129199
 Ion Ratio Lower Upper
 106 100
 91 208.8 110.3 331.0



#72
 1,4-Dichlorobenzene-d4
 Concen: 50.000 ug/l
 RT: 13.428 min Scan# 1904
 Delta R.T. 0.006 min
 Lab File: VY011454.D
 Acq: 15 Nov 2022 13:43

Tgt Ion:152 Resp: 135692
 Ion Ratio Lower Upper
 152 100
 115 69.6 28.2 84.7
 150 156.0 0.0 347.6

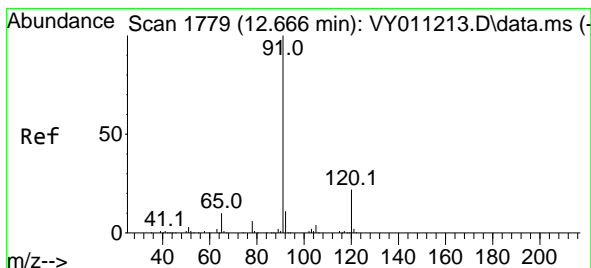
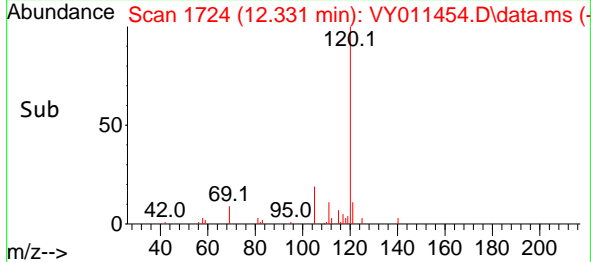
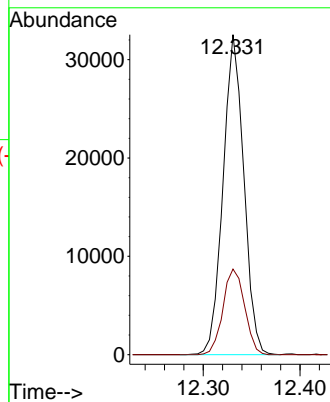
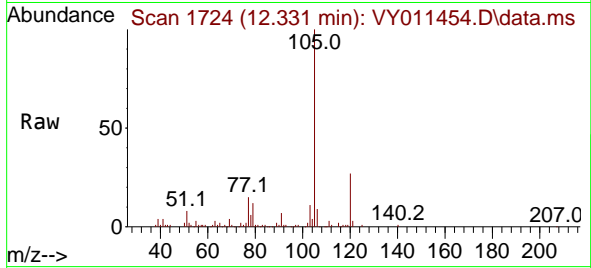




#73
 Isopropylbenzene
 Concen: 5.166 ug/l
 RT: 12.331 min Scan# 11
 Delta R.T. 0.006 min
 Lab File: VY011454.D
 Acq: 15 Nov 2022 13:43

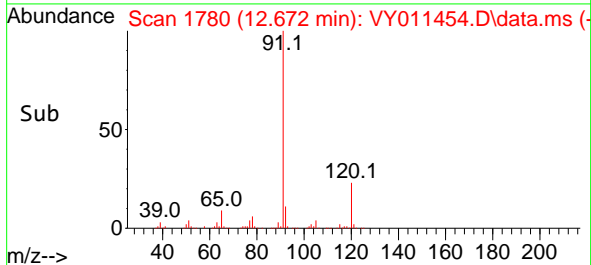
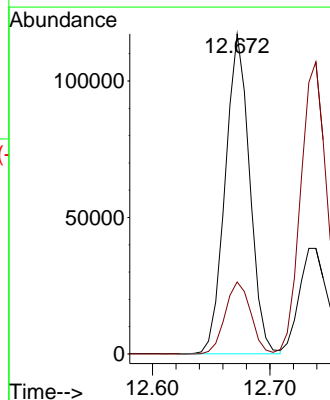
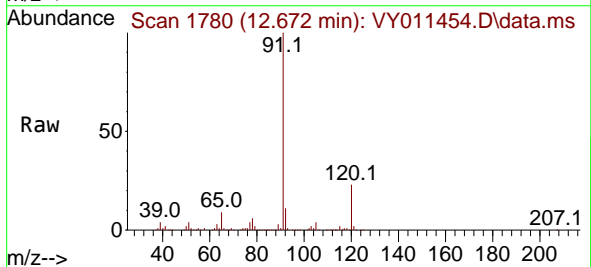
Instrument :
 MSVOA_Y
 ClientSampleId :
 31979

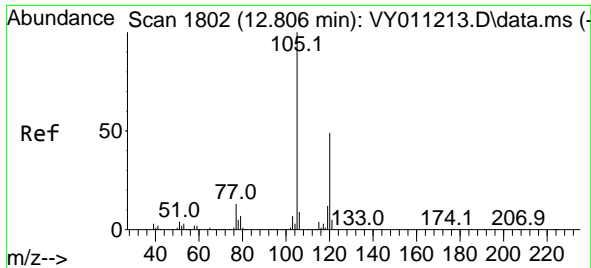
Tgt Ion:105 Resp: 48451
 Ion Ratio Lower Upper
 105 100
 120 27.9 13.4 40.2



#78
 n-propylbenzene
 Concen: 15.123 ug/l
 RT: 12.672 min Scan# 1780
 Delta R.T. 0.000 min
 Lab File: VY011454.D
 Acq: 15 Nov 2022 13:43

Tgt Ion: 91 Resp: 169236
 Ion Ratio Lower Upper
 91 100
 120 23.5 11.3 33.9

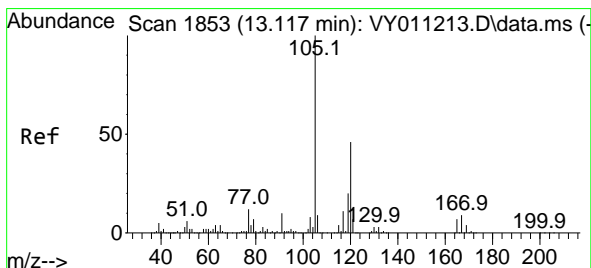
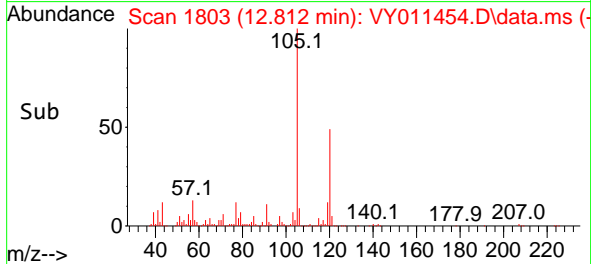
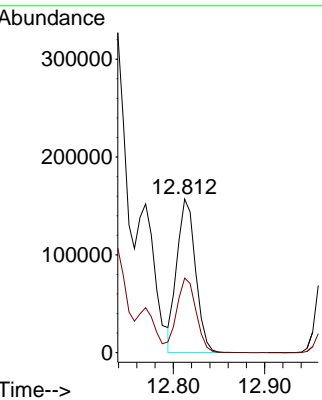
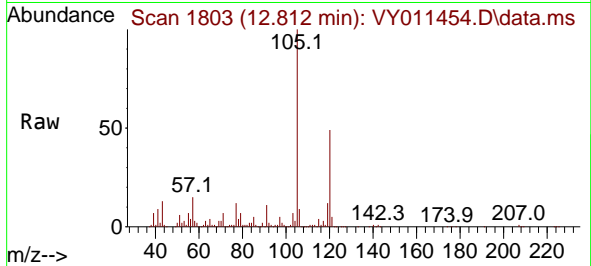




#80
 1,3,5-Trimethylbenzene
 Concen: 28.109 ug/l
 RT: 12.812 min Scan# 1802
 Delta R.T. 0.000 min
 Lab File: VY011454.D
 Acq: 15 Nov 2022 13:43

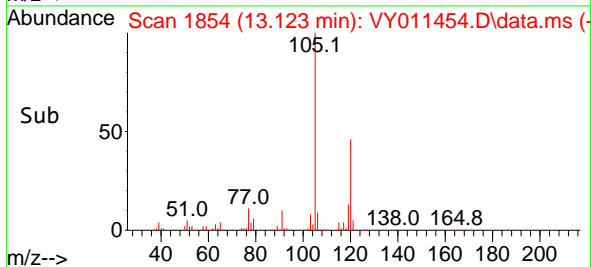
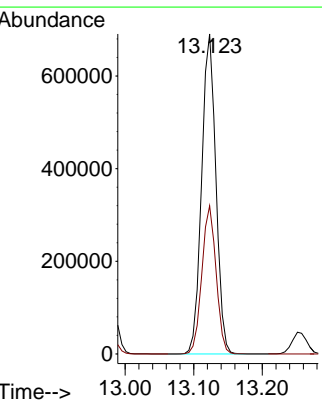
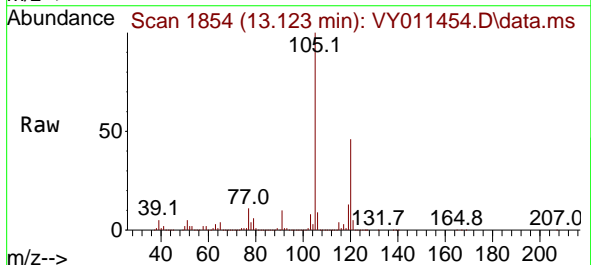
Instrument : MSVOA_Y
 ClientSampleId : 31979

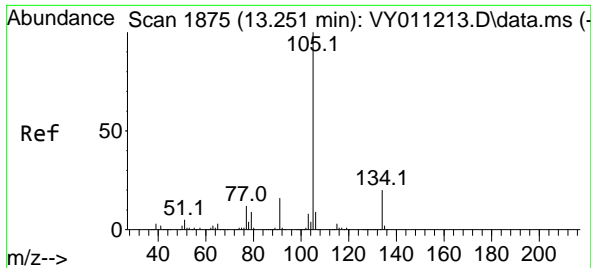
Tgt Ion:105 Resp: 222353
 Ion Ratio Lower Upper
 105 100
 120 51.4 24.4 73.4



#84
 1,2,4-Trimethylbenzene
 Concen: 128.145 ug/l
 RT: 13.123 min Scan# 1854
 Delta R.T. 0.006 min
 Lab File: VY011454.D
 Acq: 15 Nov 2022 13:43

Tgt Ion:105 Resp: 994985
 Ion Ratio Lower Upper
 105 100
 120 46.2 22.3 66.9

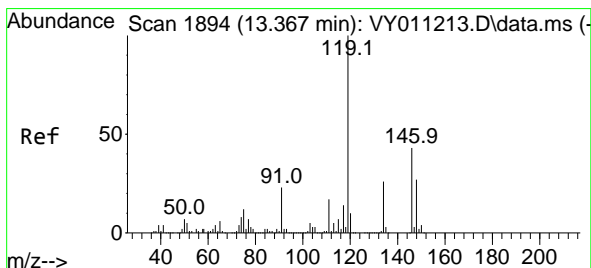
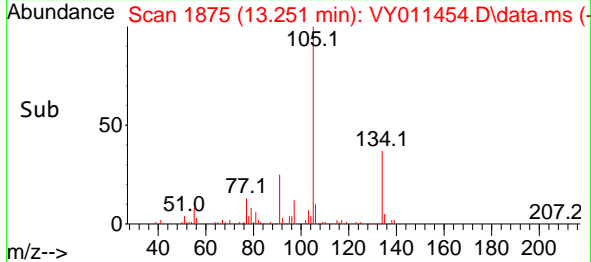
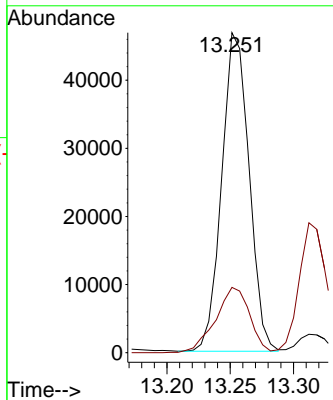
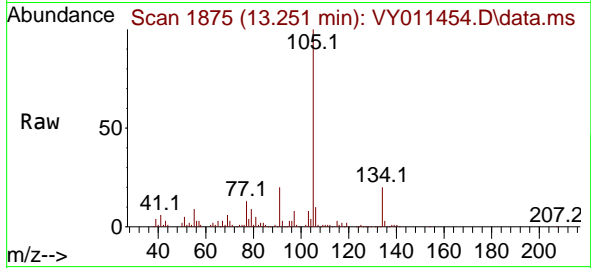




#85
 sec-Butylbenzene
 Concen: 6.982 ug/l
 RT: 13.251 min Scan# 1875
 Delta R.T. 0.000 min
 Lab File: VY011454.D
 Acq: 15 Nov 2022 13:43

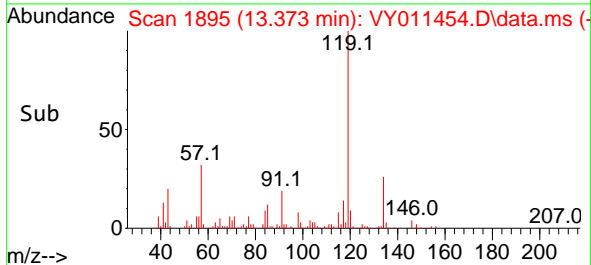
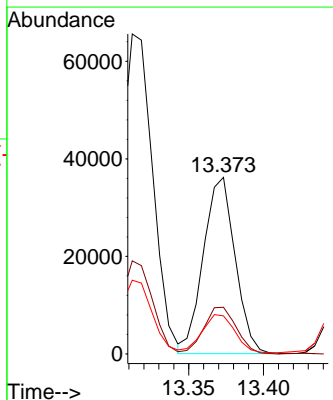
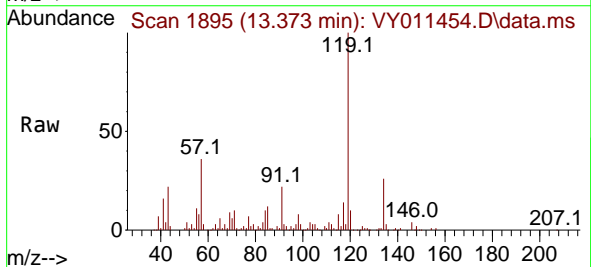
Instrument : MSVOA_Y
 ClientSampleId : 31979

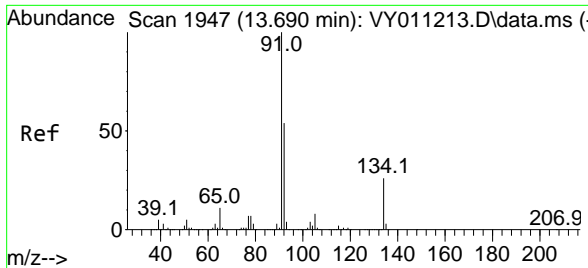
Tgt Ion:105 Resp: 70286
 Ion Ratio Lower Upper
 105 100
 134 25.6 10.2 30.4



#86
 p-Isopropyltoluene
 Concen: 6.334 ug/l
 RT: 13.373 min Scan# 1895
 Delta R.T. 0.006 min
 Lab File: VY011454.D
 Acq: 15 Nov 2022 13:43

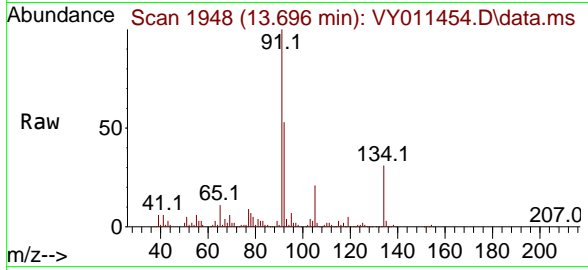
Tgt Ion:119 Resp: 53454
 Ion Ratio Lower Upper
 119 100
 134 27.3 13.2 39.5
 91 22.1 12.4 37.2





#89
 n-Butylbenzene
 Concen: 12.270 ug/l
 RT: 13.696 min Scan# 1948
 Delta R.T. 0.000 min
 Lab File: VY011454.D
 Acq: 15 Nov 2022 13:43

Instrument : MSVOA_Y
 ClientSampleId : 31979



Tgt Ion	Resp	Ion Ratio	Lower	Upper
91	93036	100		
92		61.8	26.3	78.9
134		0.0	13.0	38.9#

