

Data Path : Z:\voasrv\HPCHEM1\MSVOA_Y\Data\VY120922\
 Data File : VY011744.D
 Acq On : 09 Dec 2022 15:35
 Operator : KP/MD
 Sample : VY1209SBL01
 Misc : 5.00g/5.0mL/MSVOA_Y/SOIL
 ALS Vial : 12 Sample Multiplier: 1

Instrument :
 MSVOA_Y
 ClientSampleId :
 VY1209SBL01

Quant Time: Dec 10 03:36:11 2022
 Quant Method : Z:\voasrv\HPCHEM1\MSVOA_Y\methods\82Y120922S.M
 Quant Title : SW846 8260
 QLast Update : Sat Dec 10 03:30:20 2022
 Response via : Initial Calibration

Compound	R.T.	QIon	Response	Conc	Units	Dev(Min)

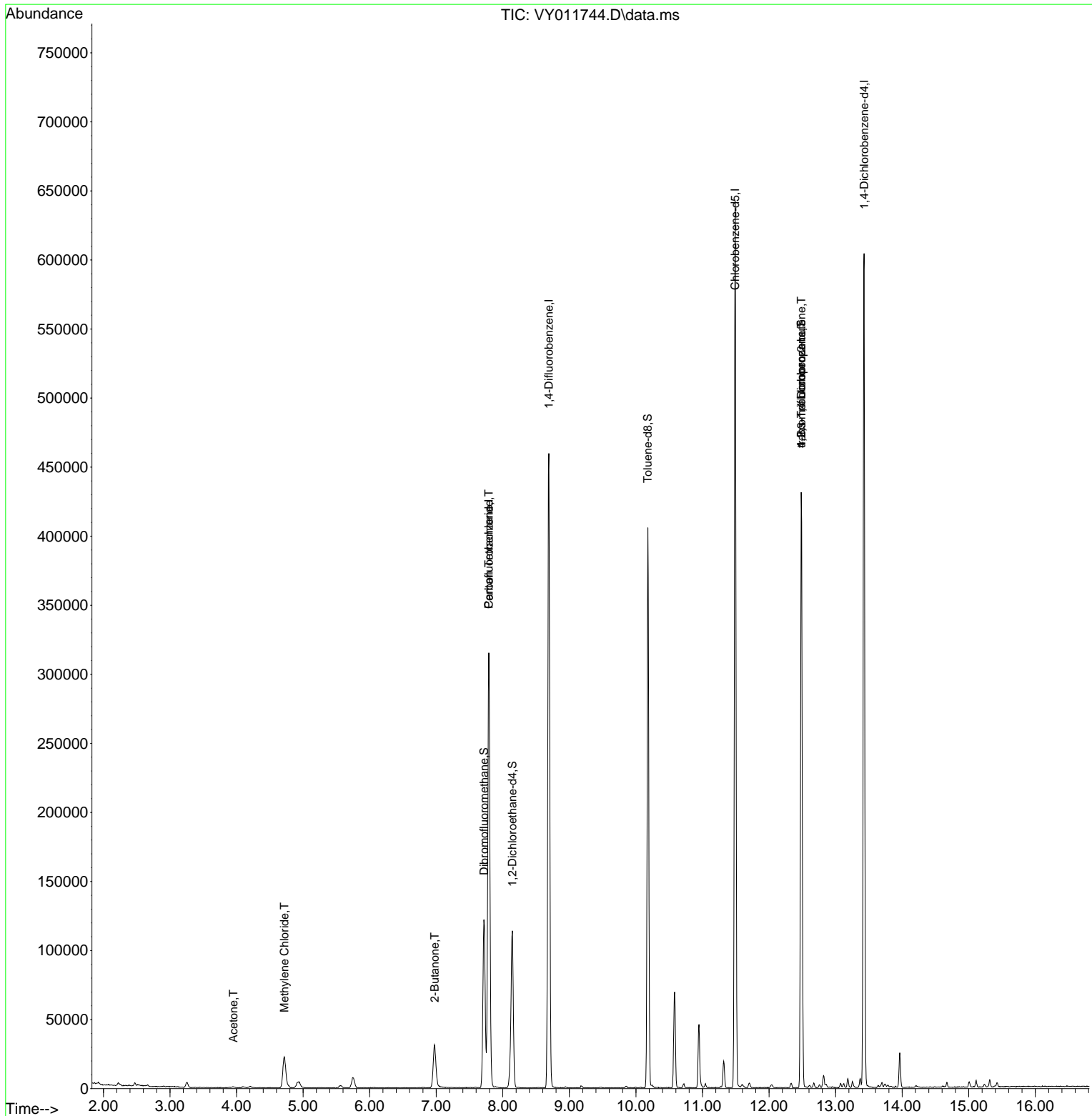
Internal Standards						
1) Pentafluorobenzene	7.789	168	244101	50.000	ug/l	0.00
34) 1,4-Difluorobenzene	8.691	114	400870	50.000	ug/l	0.00
63) Chlorobenzene-d5	11.490	117	347346	50.000	ug/l	0.00
72) 1,4-Dichlorobenzene-d4	13.428	152	160011	50.000	ug/l	0.00
System Monitoring Compounds						
33) 1,2-Dichloroethane-d4	8.143	65	85659	51.576	ug/l	0.00
Spiked Amount	50.000	Range 50 - 163	Recovery	=	103.160%	
35) Dibromofluoromethane	7.716	113	87274	48.917	ug/l	0.00
Spiked Amount	50.000	Range 54 - 147	Recovery	=	97.840%	
50) Toluene-d8	10.179	98	265856	44.844	ug/l	0.00
Spiked Amount	50.000	Range 49 - 140	Recovery	=	89.680%	
62) 4-Bromofluorobenzene	12.483	95	103666	44.061	ug/l	0.00
Spiked Amount	50.000	Range 25 - 144	Recovery	=	88.120%	
Target Compounds						
						Qvalue
2) Dichlorodifluoromethane	1.906	85	521	Below Cal	#	63
3) Chloromethane	2.119	50	468	Below Cal	#	79
4) Vinyl Chloride	2.473	62	65	Below Cal	#	43
5) Bromomethane	2.668	94	427	Below Cal	#	80
11) Tert butyl alcohol	4.936	59	5441	Below Cal	#	74
16) Acetone	3.954	43	1202	1.803	ug/l	95
18) Methyl Acetate	4.509	43	26	Below Cal	#	50
20) Methylene Chloride	4.716	84	17212	1.563	ug/l	94
25) 2-Butanone	6.978	43	1683	1.963	ug/l #	65
31) Cyclohexane	7.789	56	4920	Below Cal	#	1
38) Carbon Tetrachloride	7.789	117	24120	6.750	ug/l #	18
76) 1,2,3-Trichloropropane	12.483	75	54810	33.856	ug/l #	100
81) trans-1,4-Dichloro-2-b...	12.483	75	54810	76.827	ug/l #	13

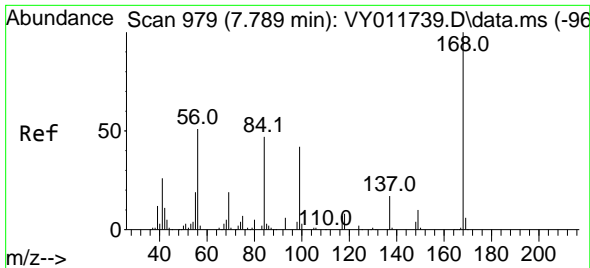
(#) = qualifier out of range (m) = manual integration (+) = signals summed

Data Path : Z:\voasrv\HPCHEM1\MSVOA_Y\Data\VY120922\
 Data File : VY011744.D
 Acq On : 09 Dec 2022 15:35
 Operator : KP/MD
 Sample : VY1209SBL01
 Misc : 5.00g/5.0mL/MSVOA_Y/SOIL
 ALS Vial : 12 Sample Multiplier: 1

Instrument :
 MSVOA_Y
 ClientSampleId :
 VY1209SBL01

Quant Time: Dec 10 03:36:11 2022
 Quant Method : Z:\voasrv\HPCHEM1\MSVOA_Y\methods\82Y120922S.M
 Quant Title : SW846 8260
 QLast Update : Sat Dec 10 03:30:20 2022
 Response via : Initial Calibration

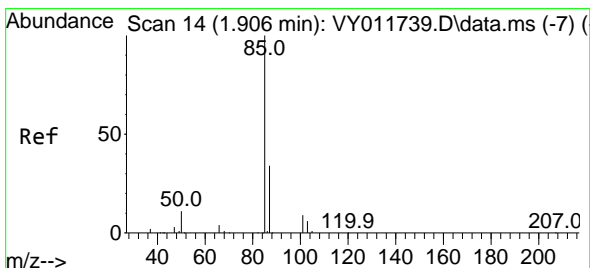
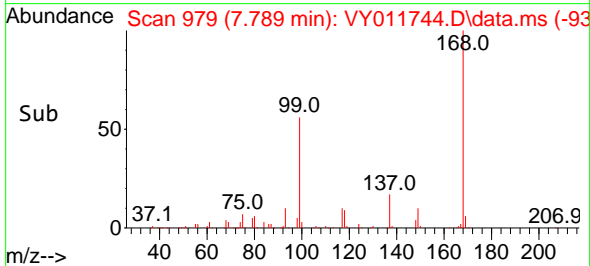
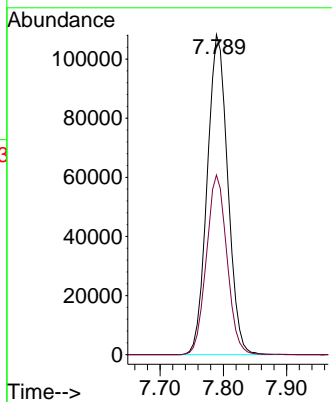
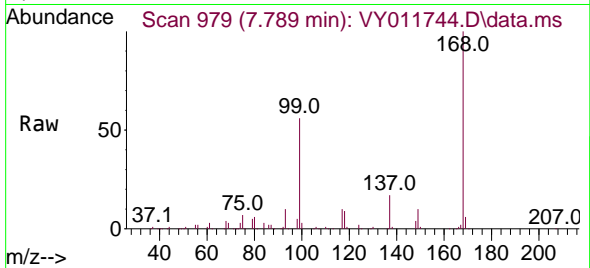




#1
 Pentafluorobenzene
 Concen: 50.000 ug/l
 RT: 7.789 min Scan# 91
 Delta R.T. 0.000 min
 Lab File: VY011744.D
 Acq: 09 Dec 2022 15:35

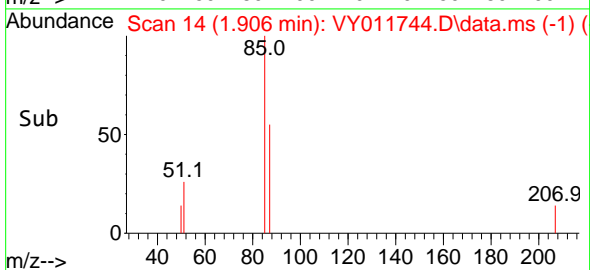
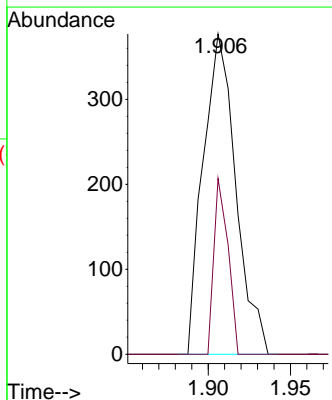
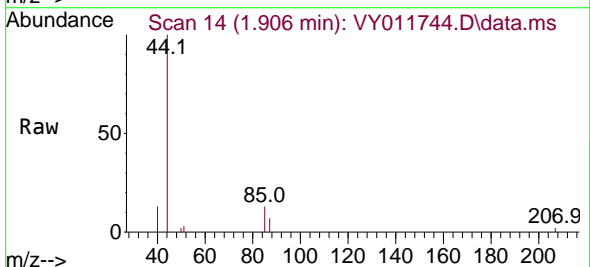
Instrument :
 MSVOA_Y
 ClientSampleId :
 VY1209SBL01

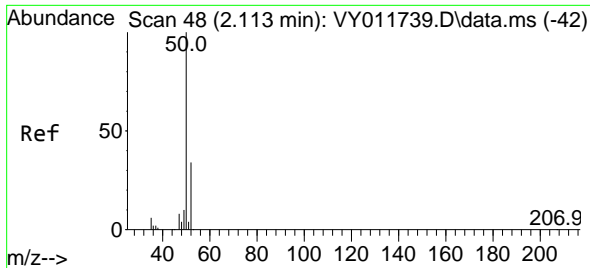
Tgt Ion:168 Resp: 244101
 Ion Ratio Lower Upper
 168 100
 99 56.1 44.0 66.0



#2
 Dichlorodifluoromethane
 Concen: Below Cal
 RT: 1.906 min Scan# 14
 Delta R.T. -0.000 min
 Lab File: VY011744.D
 Acq: 09 Dec 2022 15:35

Tgt Ion: 85 Resp: 521
 Ion Ratio Lower Upper
 85 100
 87 54.9 16.8 50.4#

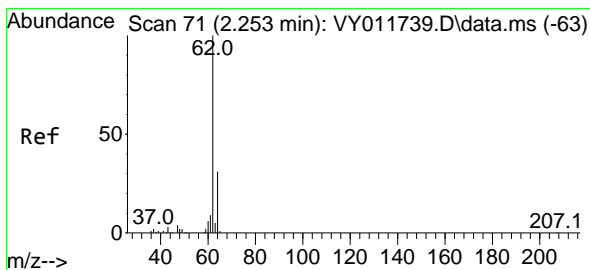
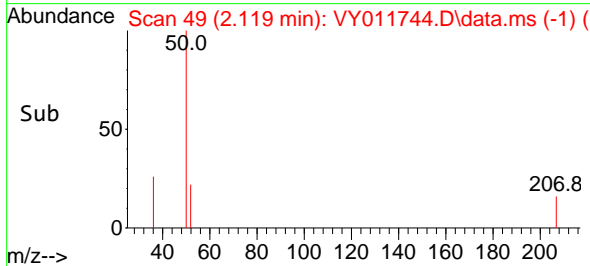
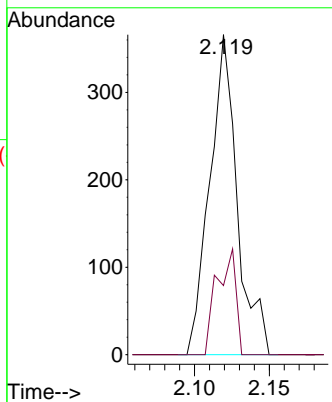
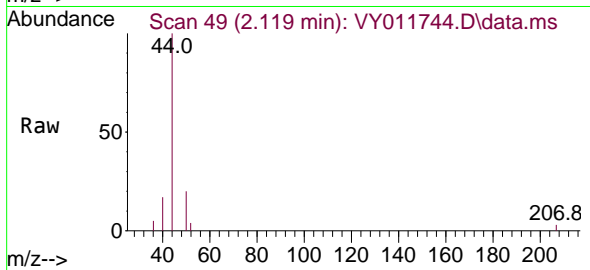




#3
 Chloromethane
 Concen: Below Cal
 RT: 2.119 min Scan# 49
 Delta R.T. 0.006 min
 Lab File: VY011744.D
 Acq: 09 Dec 2022 15:35

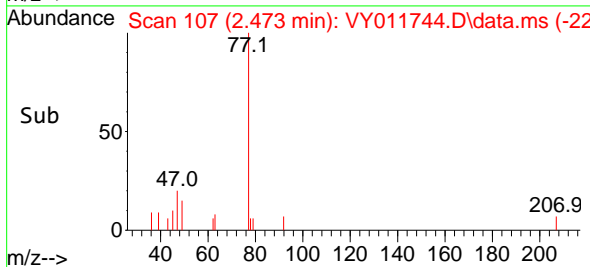
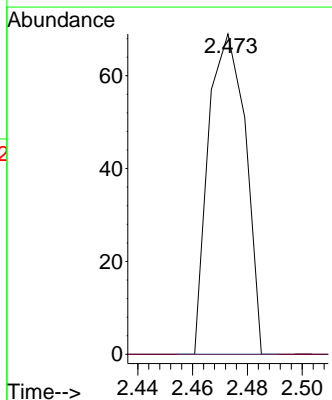
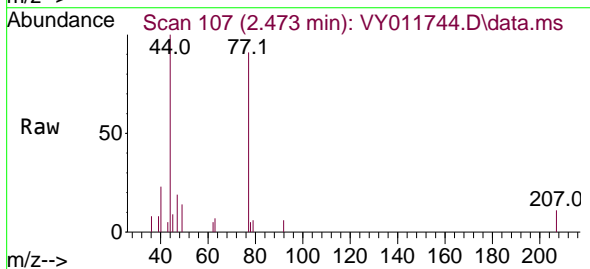
Instrument : MSVOA_Y
 ClientSampleId : VY1209SBL01

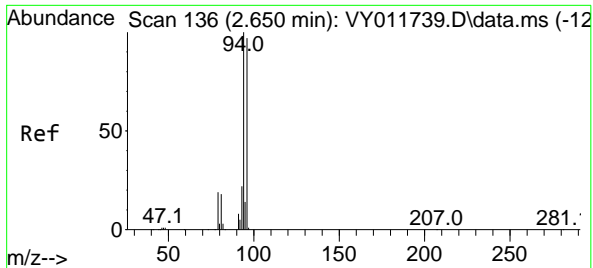
Tgt Ion: 50 Resp: 468
 Ion Ratio Lower Upper
 50 100
 52 21.6 26.8 40.2#



#4
 Vinyl Chloride
 Concen: Below Cal
 RT: 2.473 min Scan# 107
 Delta R.T. 0.220 min
 Lab File: VY011744.D
 Acq: 09 Dec 2022 15:35

Tgt Ion: 62 Resp: 65
 Ion Ratio Lower Upper
 62 100
 64 0.0 25.0 37.6#

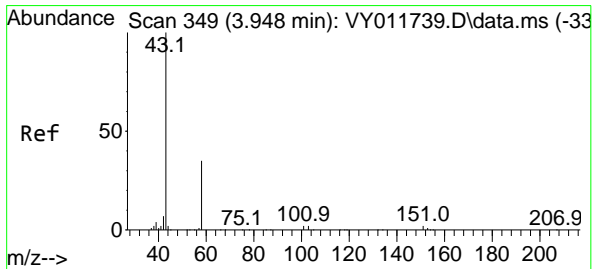
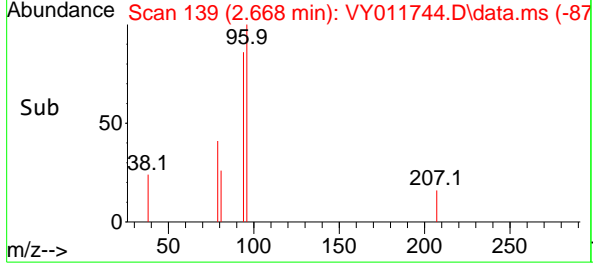
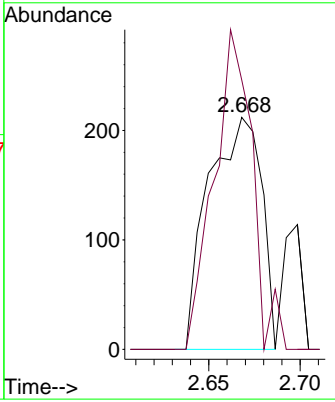
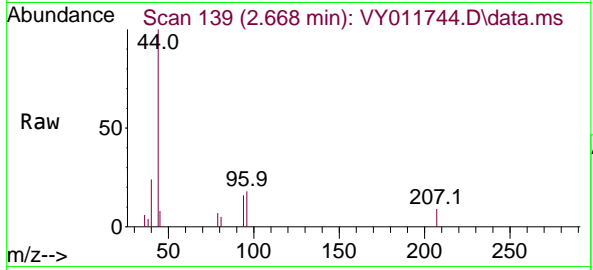




#5
 Bromomethane
 Concen: Below Cal
 RT: 2.668 min Scan# 11
 Delta R.T. 0.018 min
 Lab File: VY011744.D
 Acq: 09 Dec 2022 15:35

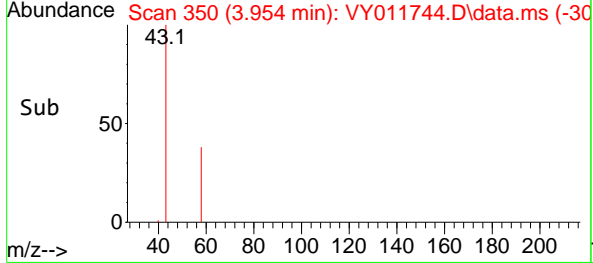
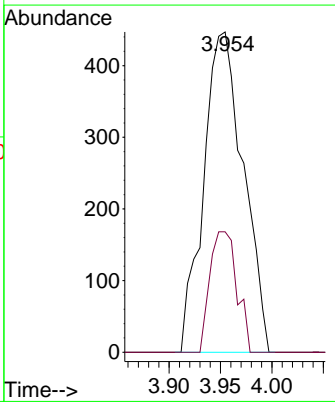
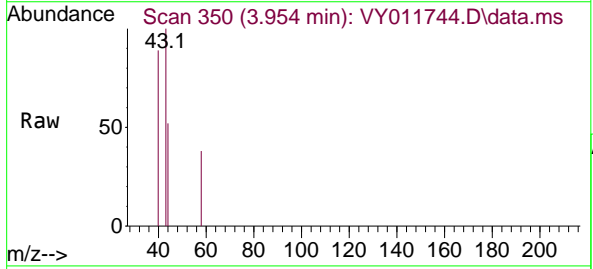
Instrument : MSVOA_Y
 ClientSampleId : VY1209SBL01

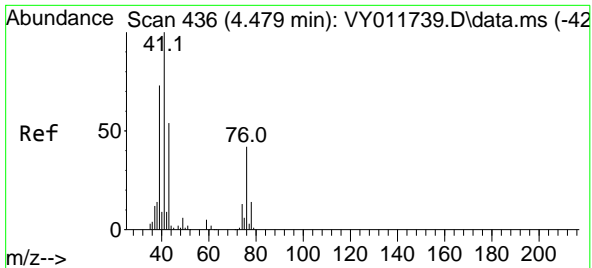
Tgt Ion: 94 Resp: 427
 Ion Ratio Lower Upper
 94 100
 96 116.0 77.4 116.2



#16
 Acetone
 Concen: 1.803 ug/l
 RT: 3.954 min Scan# 350
 Delta R.T. 0.006 min
 Lab File: VY011744.D
 Acq: 09 Dec 2022 15:35

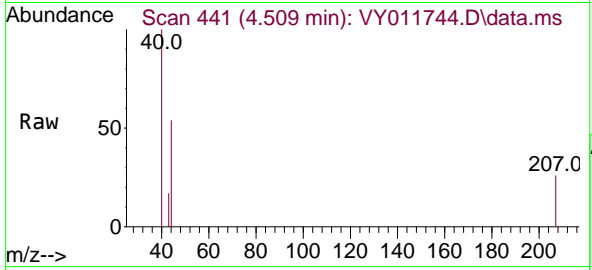
Tgt Ion: 43 Resp: 1202
 Ion Ratio Lower Upper
 43 100
 58 37.6 27.9 41.9



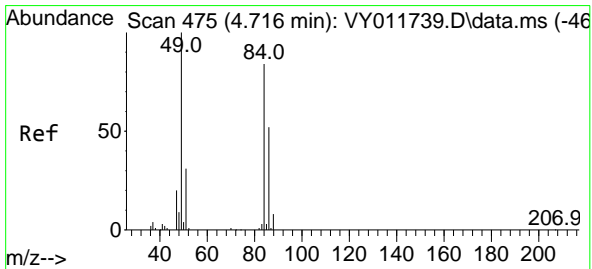
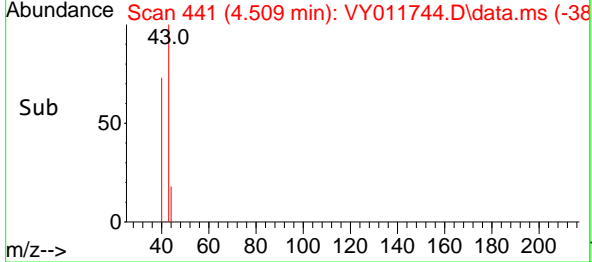
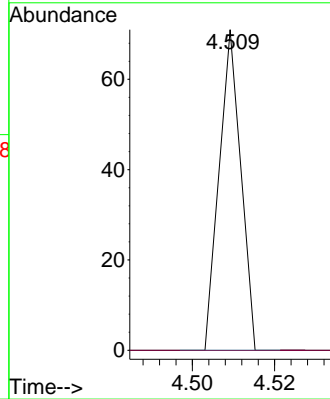


#18
 Methyl Acetate
 Concen: Below Cal
 RT: 4.509 min Scan# 441
 Delta R.T. 0.030 min
 Lab File: VY011744.D
 Acq: 09 Dec 2022 15:35

Instrument :
 MSVOA_Y
 ClientSampleId :
 VY1209SBL01

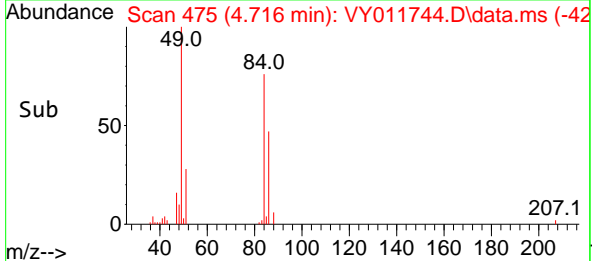
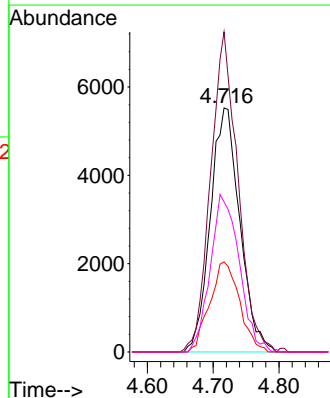
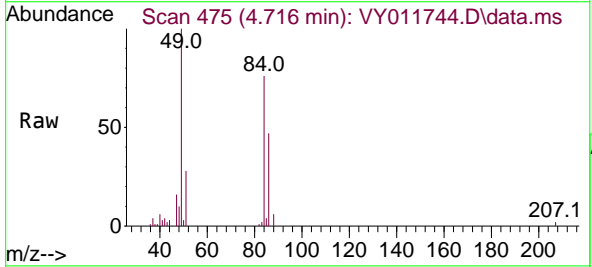


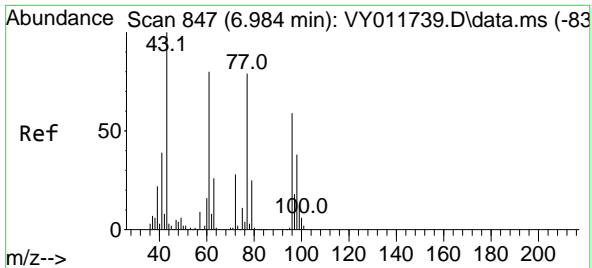
Tgt Ion: 43 Resp: 26
 Ion Ratio Lower Upper
 43 100
 74 0.0 20.1 30.1#



#20
 Methylene Chloride
 Concen: 1.563 ug/l
 RT: 4.716 min Scan# 475
 Delta R.T. 0.000 min
 Lab File: VY011744.D
 Acq: 09 Dec 2022 15:35

Tgt Ion: 84 Resp: 17212
 Ion Ratio Lower Upper
 84 100
 49 131.1 95.4 143.2
 51 36.9 29.9 44.9
 86 61.5 49.6 74.4

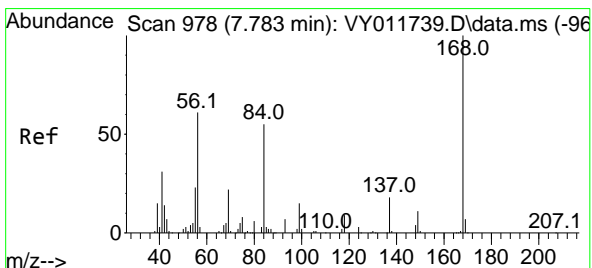
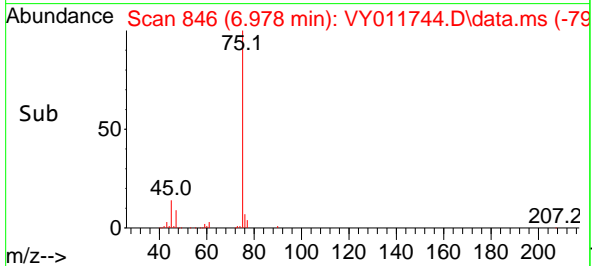
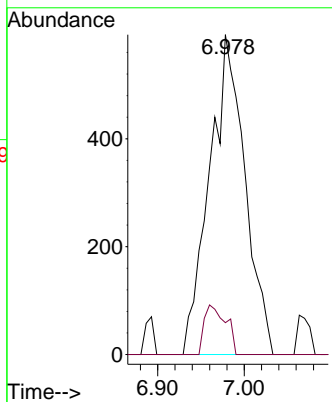
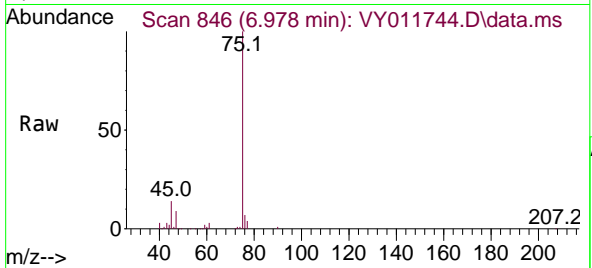




#25
 2-Butanone
 Concen: 1.963 ug/l
 RT: 6.978 min Scan# 846
 Delta R.T. -0.006 min
 Lab File: VY011744.D
 Acq: 09 Dec 2022 15:35

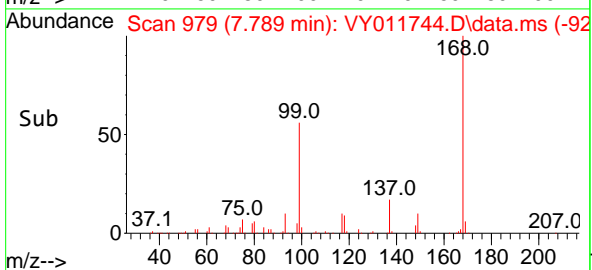
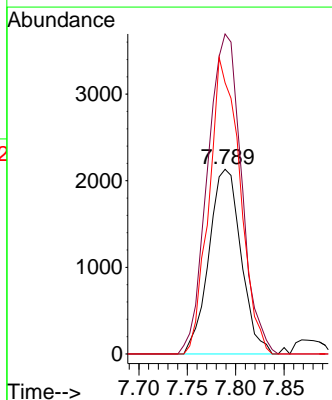
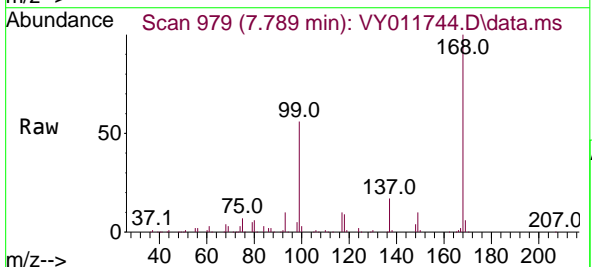
Instrument : MSVOA_Y
 ClientSampleId : VY1209SBL01

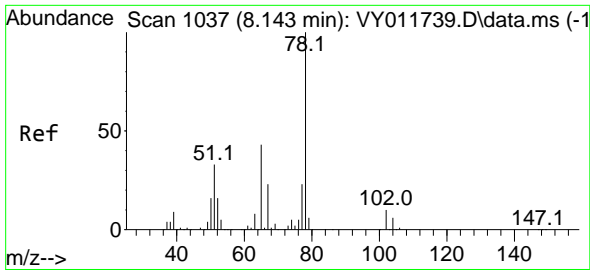
Tgt Ion: 43 Resp: 1683
 Ion Ratio Lower Upper
 43 100
 72 9.9 22.6 34.0#



#31
 Cyclohexane
 Concen: Below Cal
 RT: 7.789 min Scan# 979
 Delta R.T. 0.006 min
 Lab File: VY011744.D
 Acq: 09 Dec 2022 15:35

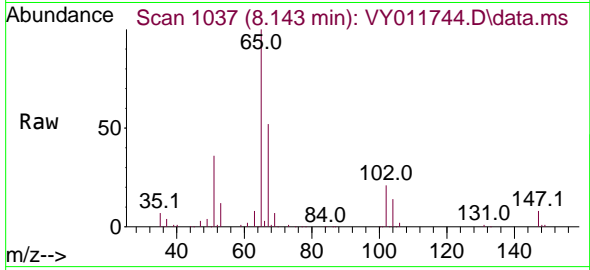
Tgt Ion: 56 Resp: 4920
 Ion Ratio Lower Upper
 56 100
 69 173.3 29.2 43.8#
 84 146.9 72.6 108.8#



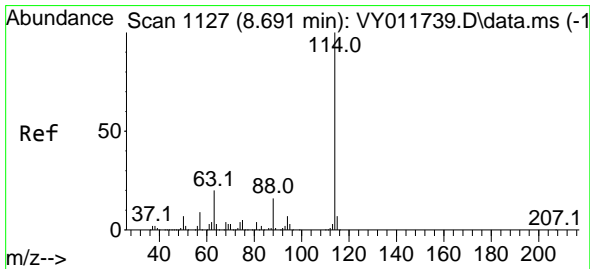
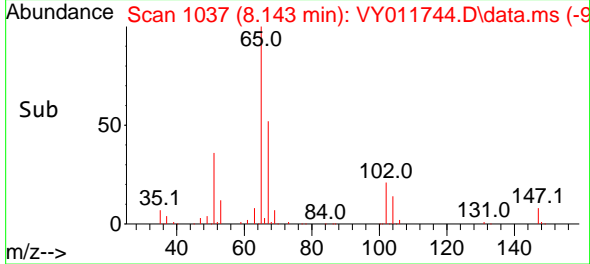
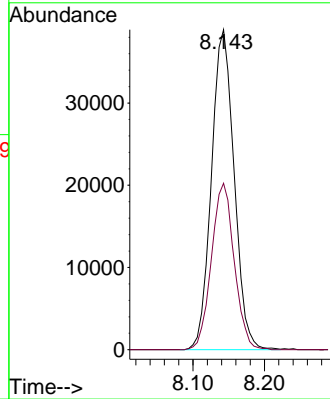


#33
 1,2-Dichloroethane-d4
 Concen: 51.576 ug/l
 RT: 8.143 min Scan# 1037
 Delta R.T. -0.000 min
 Lab File: VY011744.D
 Acq: 09 Dec 2022 15:35

Instrument : MSVOA_Y
 ClientSampleId : VY1209SBL01

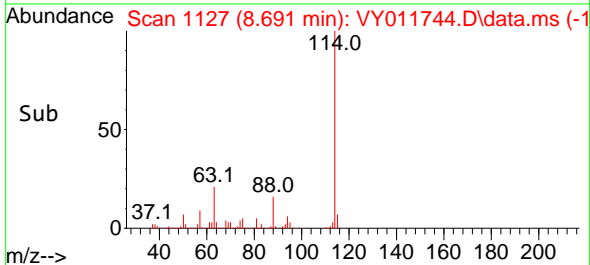
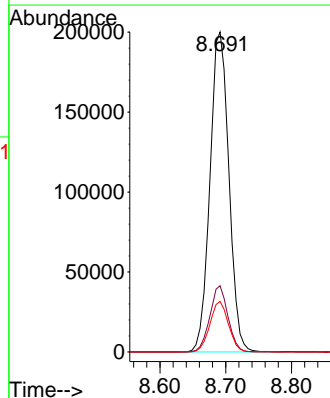
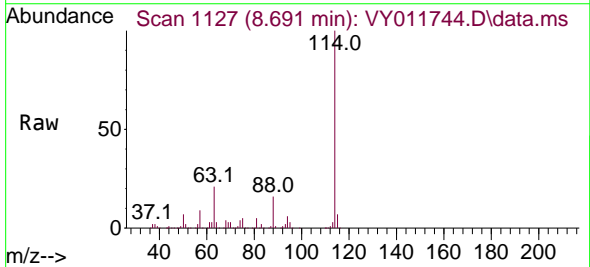


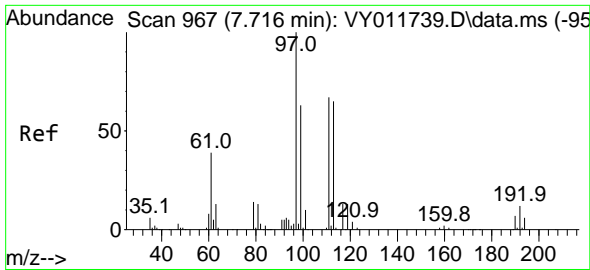
Tgt Ion: 65 Resp: 85659
 Ion Ratio Lower Upper
 65 100
 67 52.3 0.0 103.2



#34
 1,4-Difluorobenzene
 Concen: 50.000 ug/l
 RT: 8.691 min Scan# 1127
 Delta R.T. 0.000 min
 Lab File: VY011744.D
 Acq: 09 Dec 2022 15:35

Tgt Ion: 114 Resp: 400870
 Ion Ratio Lower Upper
 114 100
 63 20.7 0.0 39.6
 88 15.8 0.0 32.2

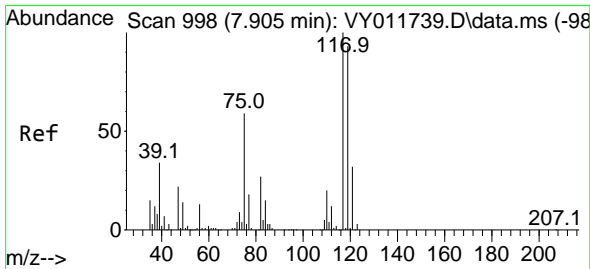
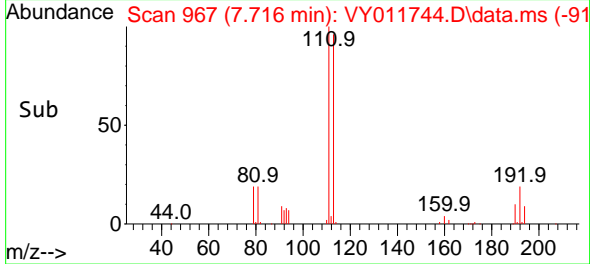
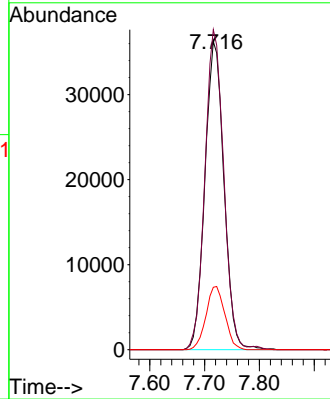
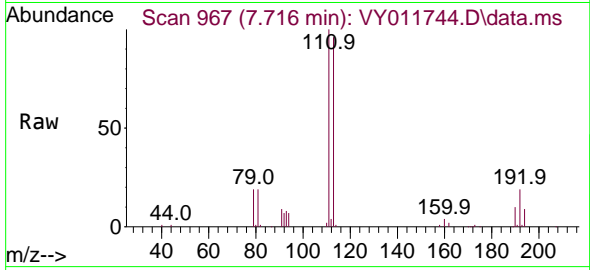




#35
 Dibromofluoromethane
 Concen: 48.917 ug/l
 RT: 7.716 min Scan# 901
 Delta R.T. -0.000 min
 Lab File: VY011744.D
 Acq: 09 Dec 2022 15:35

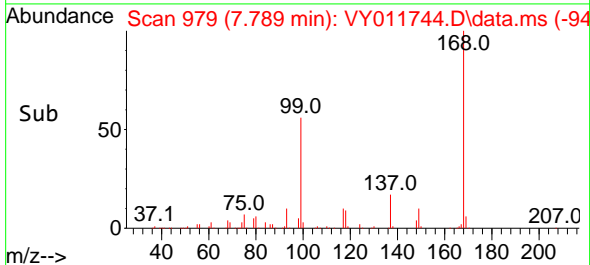
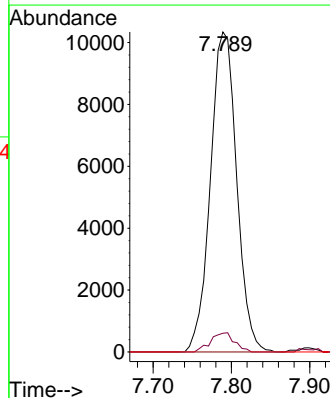
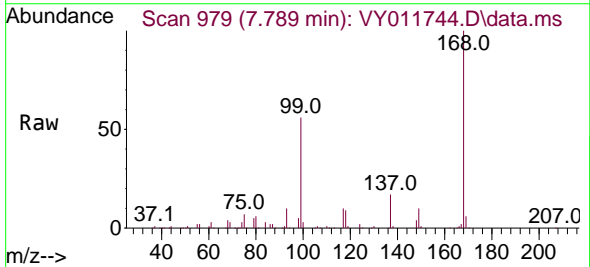
Instrument :
 MSVOA_Y
 ClientSampleId :
 VY1209SBL01

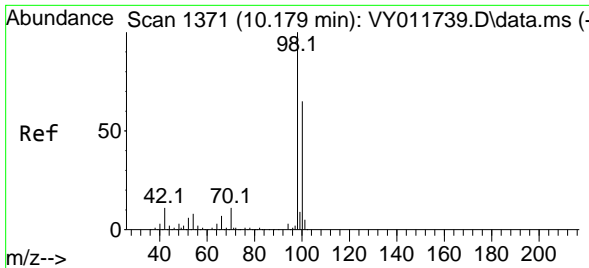
Tgt Ion:113 Resp: 87274
 Ion Ratio Lower Upper
 113 100
 111 102.5 83.0 124.4
 192 20.3 16.0 24.0



#38
 Carbon Tetrachloride
 Concen: 6.750 ug/l
 RT: 7.789 min Scan# 979
 Delta R.T. -0.116 min
 Lab File: VY011744.D
 Acq: 09 Dec 2022 15:35

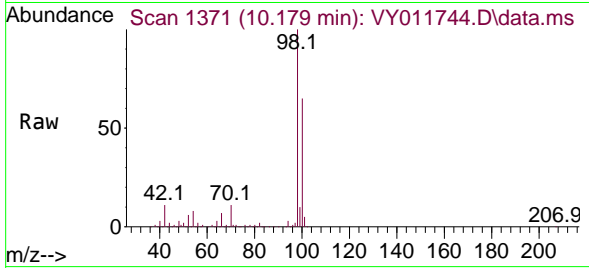
Tgt Ion:117 Resp: 24120
 Ion Ratio Lower Upper
 117 100
 119 5.9 73.8 110.8#
 121 0.0 25.2 37.8#



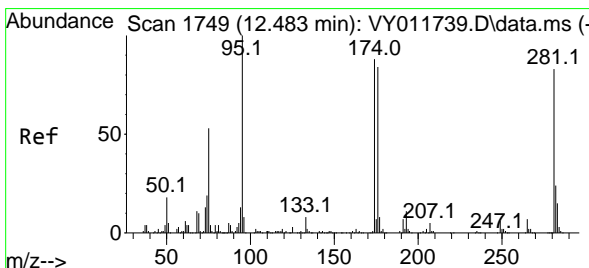
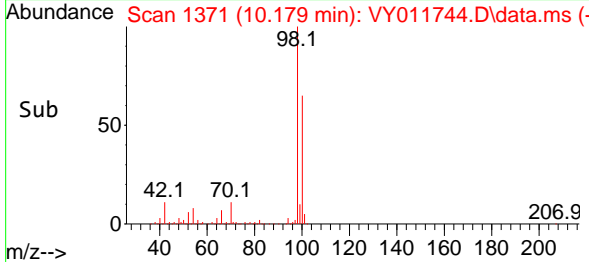
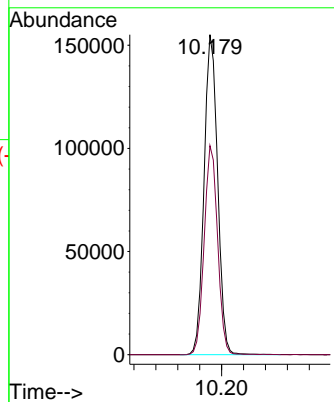


#50
 Toluene-d8
 Concen: 44.844 ug/l
 RT: 10.179 min Scan# 11
 Delta R.T. -0.000 min
 Lab File: VY011744.D
 Acq: 09 Dec 2022 15:35

Instrument : MSVOA_Y
 ClientSampleId : VY1209SBL01

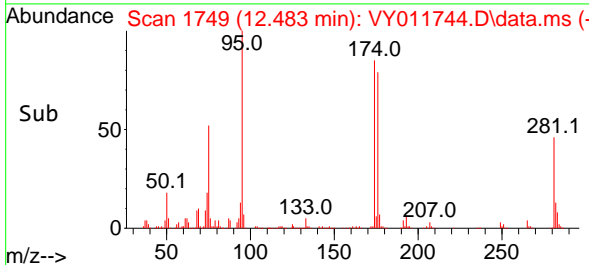
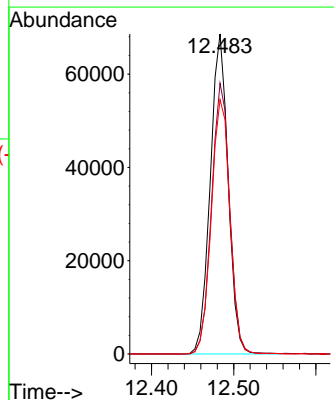
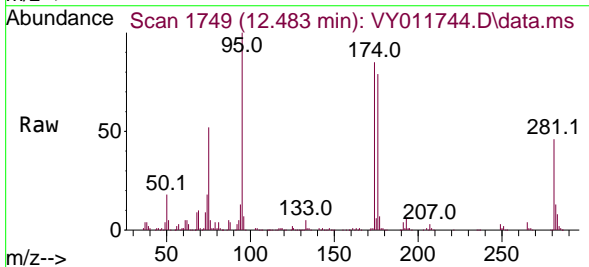


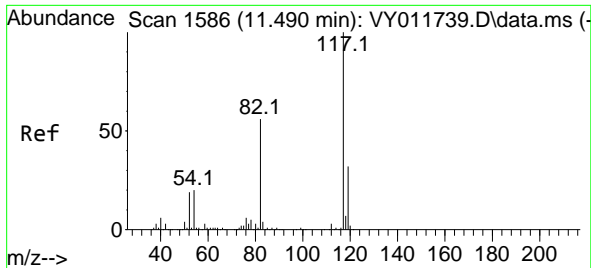
Tgt Ion: 98 Resp: 265856
 Ion Ratio Lower Upper
 98 100
 100 64.5 51.9 77.9



#62
 4-Bromofluorobenzene
 Concen: 44.061 ug/l
 RT: 12.483 min Scan# 1749
 Delta R.T. 0.000 min
 Lab File: VY011744.D
 Acq: 09 Dec 2022 15:35

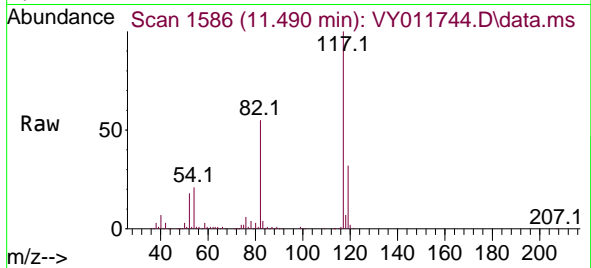
Tgt Ion: 95 Resp: 103666
 Ion Ratio Lower Upper
 95 100
 174 86.3 0.0 172.0
 176 82.8 0.0 167.6





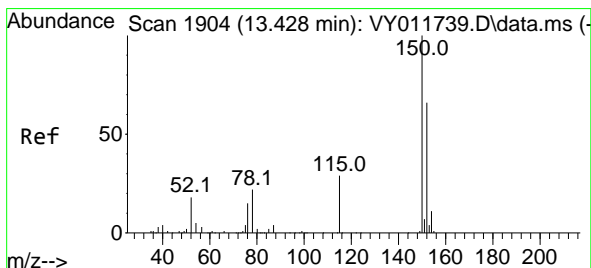
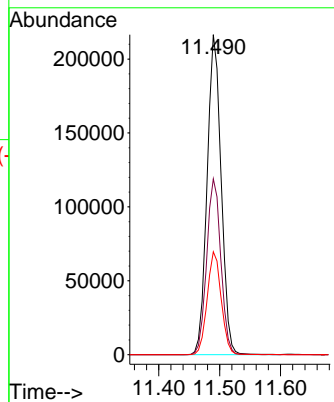
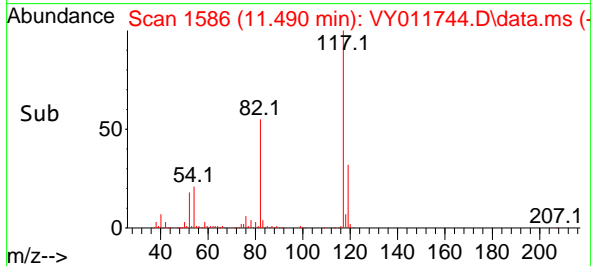
#63
 Chlorobenzene-d5
 Concen: 50.000 ug/l
 RT: 11.490 min Scan# 117
 Delta R.T. 0.000 min
 Lab File: VY011744.D
 Acq: 09 Dec 2022 15:35

Instrument : MSVOA_Y
 ClientSampleId : VY1209SBL01

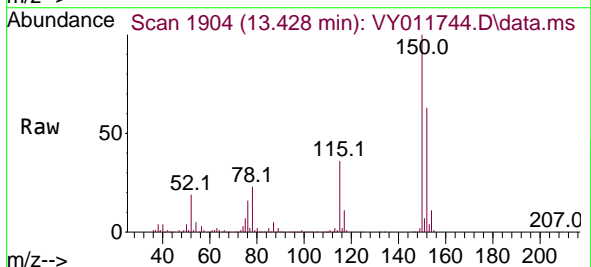


Tgt Ion:117 Resp: 347346

Ion	Ratio	Lower	Upper
117	100		
82	55.0	44.8	67.2
119	32.1	25.4	38.2

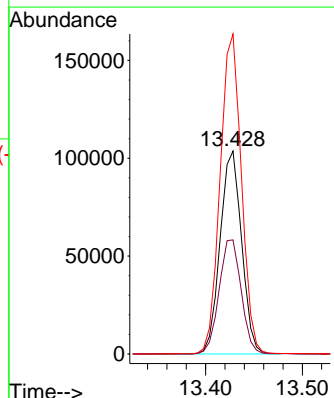
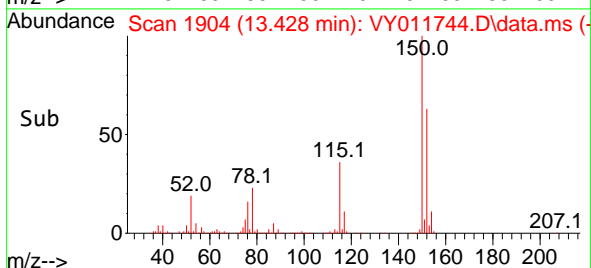


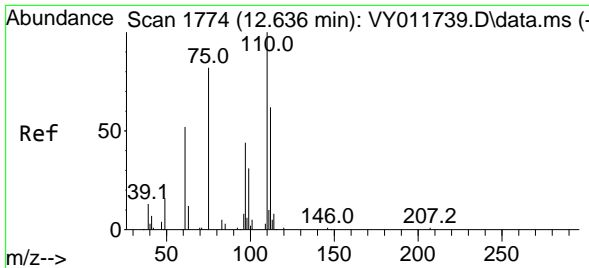
#72
 1,4-Dichlorobenzene-d4
 Concen: 50.000 ug/l
 RT: 13.428 min Scan# 1904
 Delta R.T. 0.000 min
 Lab File: VY011744.D
 Acq: 09 Dec 2022 15:35



Tgt Ion:152 Resp: 160011

Ion	Ratio	Lower	Upper
152	100		
115	57.8	29.1	87.3
150	155.7	0.0	342.6

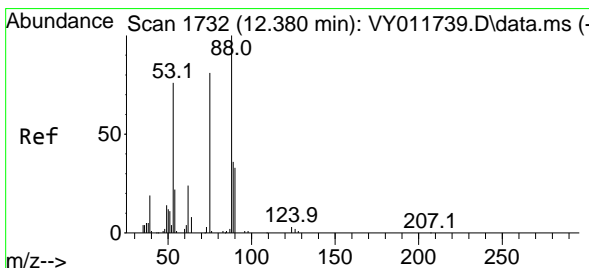
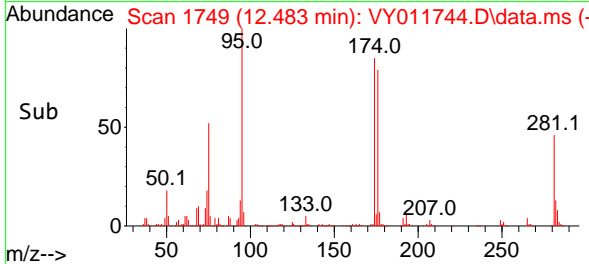
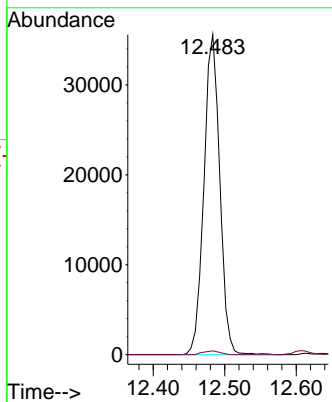
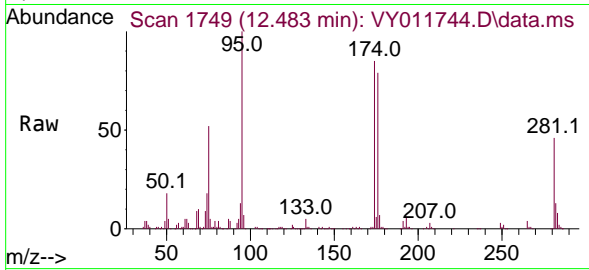




#76
 1,2,3-Trichloropropane
 Concen: 33.856 ug/l
 RT: 12.483 min Scan# 1749
 Delta R.T. -0.152 min
 Lab File: VY011744.D
 Acq: 09 Dec 2022 15:35

Instrument : MSVOA_Y
 ClientSampleId : VY1209SBL01

Tgt Ion: 75 Resp: 54810
 Ion Ratio Lower Upper
 75 100
 77 1.3 0.0 0.0#



#81
 trans-1,4-Dichloro-2-butene
 Concen: 76.827 ug/l
 RT: 12.483 min Scan# 1749
 Delta R.T. 0.104 min
 Lab File: VY011744.D
 Acq: 09 Dec 2022 15:35

Tgt Ion: 75 Resp: 54810
 Ion Ratio Lower Upper
 75 100
 53 0.0 72.5 108.7#
 89 0.5 37.0 55.4#

