

Data Path : Z:\voasrv\HPCHEM1\MSVOA\_Y\Data\VY120922\  
 Data File : VY011750.D  
 Acq On : 09 Dec 2022 18:03  
 Operator : KP/MD  
 Sample : N5943-01  
 Misc : 5.00g/5.0mL/MSVOA\_Y/SOIL  
 ALS Vial : 18 Sample Multiplier: 1

Instrument :  
 MSVOA\_Y  
 ClientSampleId :  
 RM-301

Integration Parameters: RTEINT.P

Integrator: RTE  
 Smoothing : ON  
 Sampling : 1  
 Start Thrs : 0.2  
 Stop Thrs : 0

Filtering: 5  
 Min Area: 3 % of largest Peak  
 Max Peaks: 100  
 Peak Location: TOP

If leading or trailing edge < 100 prefer < Baseline drop else tangent >  
 Peak separation: 5

Method : Z:\voasrv\HPCHEM1\MSVOA\_Y\methods\82Y120922S.M  
 Title : SW846 8260

Signal : TIC: VY011750.D\data.ms

peak #	R.T. min	first scan	max scan	last scan	PK TY	peak height	corr. area	corr. % max.	% of total
1	2.113	45	48	49	rBV3	623	566	3.05%	0.497%
2	2.192	59	61	63	rBV2	372	446	2.40%	0.391%
3	2.387	91	93	96	rBV3	337	278	1.50%	0.244%
4	2.668	136	139	140	rBV3	373	398	2.14%	0.349%
5	2.729	146	149	153	rVB3	294	459	2.47%	0.403%
6	2.893	173	176	178	rVB2	271	319	1.72%	0.280%
7	2.912	178	179	182	rBV2	268	242	1.30%	0.212%
8	2.948	182	185	187	rBV	195	270	1.45%	0.237%
9	3.101	208	210	211	rVB2	384	236	1.27%	0.207%
10	3.363	251	253	255	rBV2	235	243	1.31%	0.213%
11	3.485	270	273	275	rVB2	300	294	1.58%	0.258%
12	3.942	345	348	350	rVB	284	252	1.36%	0.221%
13	4.052	363	366	368	rBV3	275	305	1.64%	0.268%
14	4.076	368	370	371	rBV2	280	245	1.32%	0.215%
15	4.094	371	373	377	rVV4	329	463	2.49%	0.406%
16	4.259	392	400	403	rBV2	249	481	2.59%	0.422%
17	4.283	403	404	408	rVB2	285	245	1.32%	0.215%
18	4.588	452	454	459	rVB2	243	307	1.65%	0.269%
19	4.698	469	472	473	rBV2	419	368	1.98%	0.323%
20	4.716	473	475	479	rVB3	551	626	3.37%	0.549%
21	4.820	487	492	494	rBV2	201	345	1.86%	0.303%
22	4.893	500	504	506	rBV2	242	267	1.44%	0.234%
23	5.058	528	531	534	rBV2	276	312	1.68%	0.274%
24	5.167	547	549	550	rBV	242	238	1.28%	0.209%
25	5.417	588	590	594	rVB2	213	237	1.28%	0.208%
26	5.868	659	664	666	rBV2	141	238	1.28%	0.209%
27	6.131	706	707	710	rVB2	234	235	1.27%	0.206%
28	6.167	710	713	715	rBV	246	277	1.49%	0.243%
29	6.765	808	811	814	rVB2	229	247	1.33%	0.217%
30	6.960	837	843	844	rBV2	516	750	4.04%	0.658%
31	6.978	844	846	848	rVB	357	323	1.74%	0.283%
32	7.173	876	878	881	rVB2	273	273	1.47%	0.240%
33	7.234	886	888	892	rBV2	206	309	1.66%	0.271%
34	7.295	895	898	902	rBV2	182	338	1.82%	0.297%
35	7.685	958	962	964	rBV	536	694	3.74%	0.609%
36	7.716	964	967	973	rVV2	1101	2177	11.73%	1.911%

Data Path : Z:\voasrv\HPCHEM1\MSVOA\_Y\Data\VY120922\  
 Data File : VY011750.D  
 Acq On : 09 Dec 2022 18:03  
 Operator : KP/MD  
 Sample : N5943-01  
 Misc : 5.00g/5.0mL/MSVOA\_Y/SOIL  
 ALS Vial : 18 Sample Multiplier: 1

Instrument :  
 MSVOA\_Y  
 ClientSampleId :  
 RM-301

Integration Parameters: RTEINT.P

Integrator: RTE  
 Smoothing : ON  
 Sampling : 1  
 Start Thrs : 0.2  
 Stop Thrs : 0

Filtering: 5  
 Min Area: 3 % of largest Peak  
 Max Peaks: 100  
 Peak Location: TOP

If leading or trailing edge < 100 prefer < Baseline drop else tangent >  
 Peak separation: 5

Method : Z:\voasrv\HPCHEM1\MSVOA\_Y\methods\82Y120922S.M  
 Title : SW846 8260

37	7.783	973	978	986	rVV4	4170	9031	48.65%	7.926%
38	7.996	1012	1013	1017	rBV2	294	432	2.33%	0.379%
39	8.106	1028	1031	1032	rBV2	303	262	1.41%	0.230%
40	8.142	1032	1037	1044	rVB2	3797	7777	41.89%	6.826%
41	8.502	1095	1096	1101	rVB2	399	451	2.43%	0.396%
42	8.685	1121	1126	1134	rBV2	6200	12273	66.11%	10.771%
43	8.746	1134	1136	1140	rVB2	314	432	2.33%	0.379%
44	9.325	1229	1231	1235	rVB2	252	237	1.28%	0.208%
45	9.795	1304	1308	1310	rBV	217	259	1.40%	0.227%
46	9.843	1313	1316	1320	rVB2	226	353	1.90%	0.310%
47	9.959	1333	1335	1340	rVB2	185	288	1.55%	0.253%
48	10.179	1365	1371	1381	rVB	10277	18564	100.00%	16.293%
49	10.252	1381	1383	1386	rBV2	312	258	1.39%	0.226%
50	10.459	1414	1417	1419	rBV2	215	301	1.62%	0.264%
51	10.569	1433	1435	1438	rBV3	221	284	1.53%	0.249%
52	10.624	1442	1444	1448	rBV2	316	329	1.77%	0.289%
53	10.746	1459	1464	1466	rBV2	197	266	1.43%	0.233%
54	10.837	1477	1479	1482	rVB2	230	243	1.31%	0.213%
55	11.014	1505	1508	1511	rBV2	255	242	1.30%	0.212%
56	11.136	1526	1528	1530	rBV2	300	314	1.69%	0.276%
57	11.215	1540	1541	1544	rBV2	395	309	1.66%	0.271%
58	11.258	1544	1548	1551	rVV2	281	511	2.75%	0.448%
59	11.307	1554	1556	1557	rBV	337	250	1.35%	0.219%
60	11.374	1565	1567	1569	rBV2	198	239	1.29%	0.210%
61	11.489	1580	1586	1596	rVV	10532	17198	92.64%	15.094%
62	11.587	1598	1602	1606	rVB2	302	444	2.39%	0.390%
63	11.806	1633	1638	1641	rBV2	295	597	3.22%	0.524%
64	12.044	1673	1677	1678	rBV2	178	252	1.36%	0.221%
65	12.209	1702	1704	1705	rBV	295	276	1.49%	0.242%
66	12.312	1719	1721	1723	rVB2	284	257	1.38%	0.226%
67	12.483	1744	1749	1755	rVV3	4877	7875	42.42%	6.912%
68	12.556	1760	1761	1766	rVB3	263	368	1.98%	0.323%
69	12.623	1768	1772	1776	rVB2	208	371	2.00%	0.326%
70	12.660	1776	1778	1781	rBV2	460	517	2.78%	0.454%
71	12.727	1787	1789	1792	rVB2	327	268	1.44%	0.235%
72	12.757	1792	1794	1796	rBV	379	301	1.62%	0.264%
73	12.831	1803	1806	1807	rBV3	307	320	1.72%	0.281%
74	13.203	1864	1867	1868	rBV2	236	259	1.40%	0.227%
75	13.428	1899	1904	1909	rBV2	4222	7127	38.39%	6.255%
76	13.684	1944	1946	1948	rBV2	277	294	1.58%	0.258%

Data Path : Z:\voasrv\HPCHEM1\MSVOA\_Y\Data\VY120922\  
 Data File : VY011750.D  
 Acq On : 09 Dec 2022 18:03  
 Operator : KP/MD  
 Sample : N5943-01  
 Misc : 5.00g/5.0mL/MSVOA\_Y/SOIL  
 ALS Vial : 18 Sample Multiplier: 1

Instrument :  
 MSVOA\_Y  
 ClientSampleId :  
 RM-301

Integration Parameters: RTEINT.P

Integrator: RTE  
 Smoothing : ON  
 Sampling : 1  
 Start Thrs : 0.2  
 Stop Thrs : 0

Filtering: 5  
 Min Area: 3 % of largest Peak  
 Max Peaks: 100  
 Peak Location: TOP

If leading or trailing edge < 100 prefer < Baseline drop else tangent >  
 Peak separation: 5

Method : Z:\voasrv\HPCHEM1\MSVOA\_Y\methods\82Y120922S.M  
 Title : SW846 8260

77	13.745	1954	1956	1959	rBV3	275	308	1.66%	0.270%
78	13.824	1968	1969	1973	rBV3	240	253	1.36%	0.222%
79	13.928	1983	1986	1988	rBV	279	313	1.69%	0.275%
80	14.013	1997	2000	2002	rBV2	358	288	1.55%	0.253%
81	14.245	2033	2038	2042	rVB3	347	594	3.20%	0.521%
82	14.343	2052	2054	2056	rVB2	341	254	1.37%	0.223%
83	14.824	2130	2133	2134	rBV3	478	397	2.14%	0.348%
84	15.245	2199	2202	2204	rBV2	780	885	4.77%	0.777%
85	15.452	2235	2236	2238	rBV2	422	335	1.80%	0.294%
86	15.562	2252	2254	2258	rBV2	408	394	2.12%	0.346%
87	15.611	2260	2262	2264	rVB	407	321	1.73%	0.282%
88	15.635	2264	2266	2267	rBV2	334	333	1.79%	0.292%
89	15.666	2269	2271	2273	rBV2	379	323	1.74%	0.283%
90	15.714	2277	2279	2280	rVB	472	271	1.46%	0.238%
91	15.873	2303	2305	2307	rBV2	410	334	1.80%	0.293%
92	15.940	2315	2316	2318	rBV	461	395	2.13%	0.347%
93	15.989	2322	2324	2326	rBV2	490	374	2.01%	0.328%
94	16.013	2326	2328	2330	rVB2	483	350	1.89%	0.307%
95	16.141	2347	2349	2352	rBV2	337	268	1.44%	0.235%
96	16.312	2373	2377	2380	rBV3	497	646	3.48%	0.567%
97	16.367	2384	2386	2389	rBV3	388	356	1.92%	0.312%
98	16.610	2424	2426	2428	rVB2	584	364	1.96%	0.319%
99	16.708	2440	2442	2445	rVB2	402	303	1.63%	0.266%
100	16.781	2452	2454	2455	rBV	417	349	1.88%	0.306%

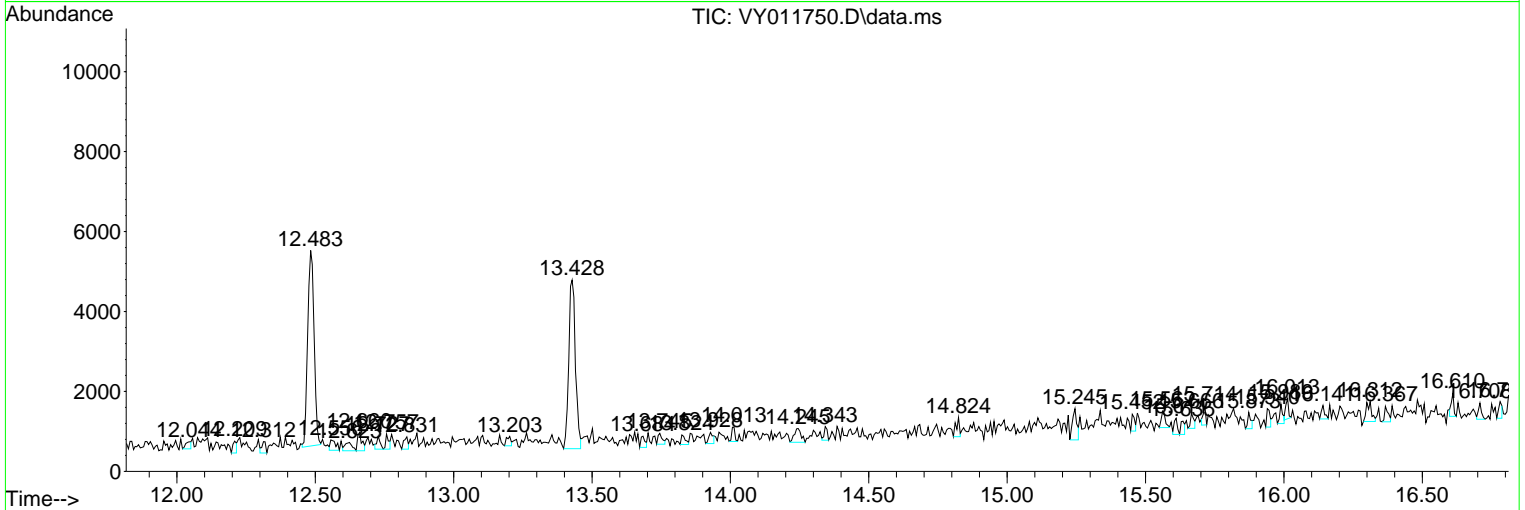
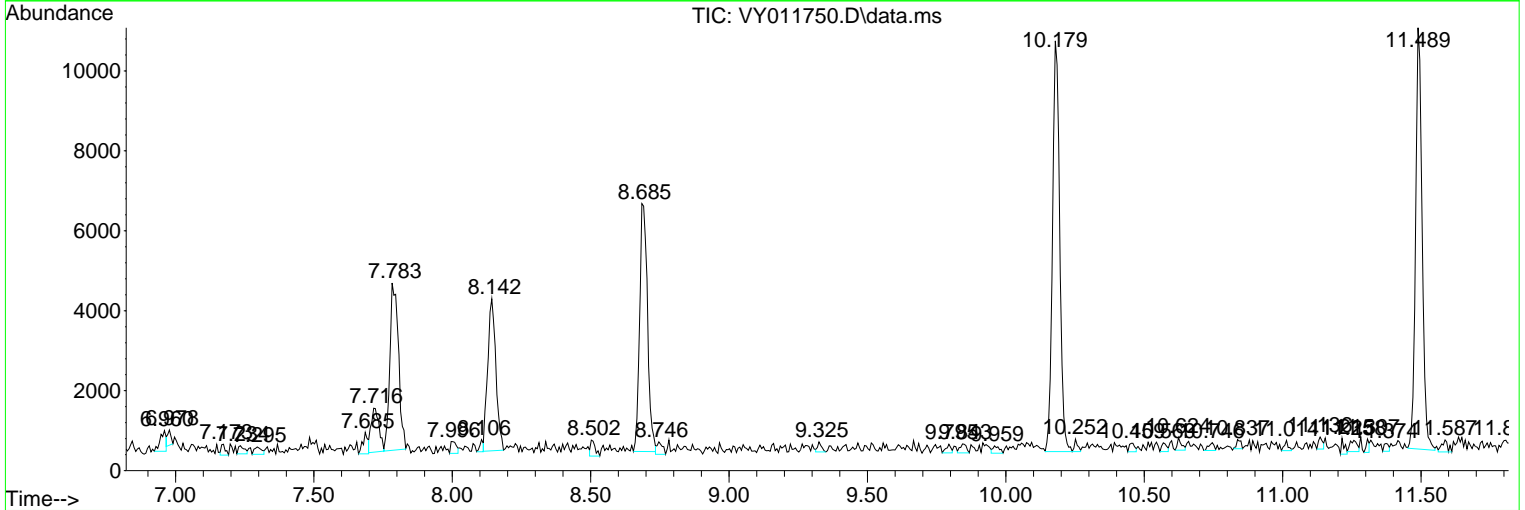
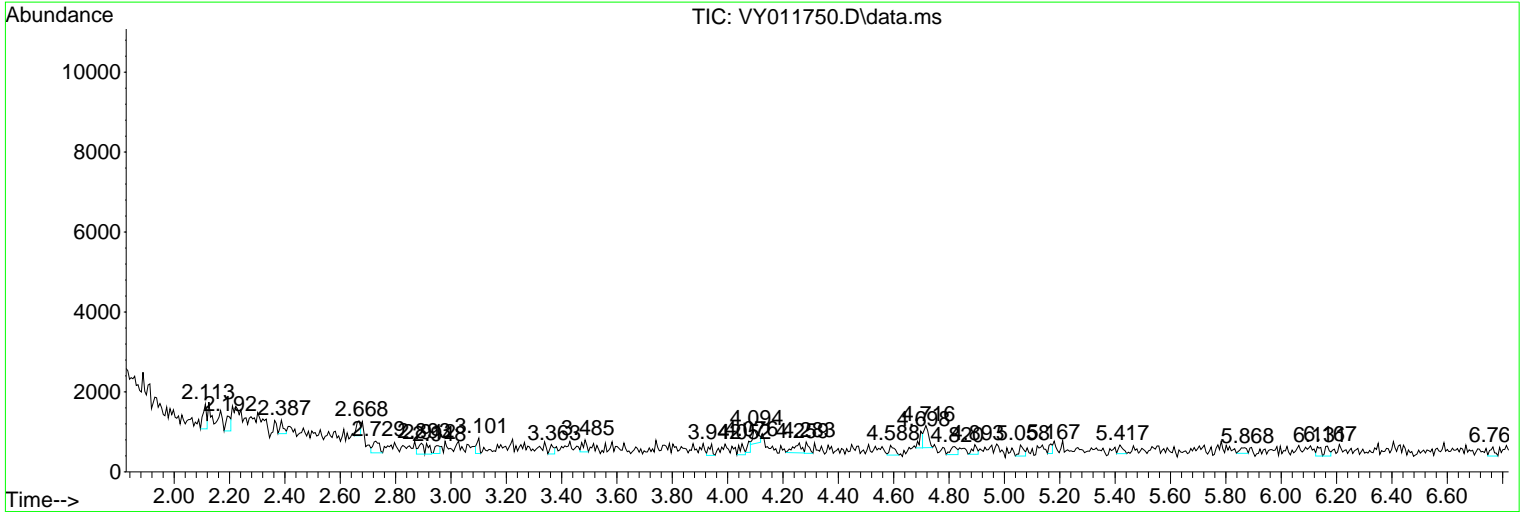
Sum of corrected areas: 113940

Data Path : Z:\voasrv\HPCHEM1\MSVOA\_Y\Data\VY120922\  
 Data File : VY011750.D  
 Acq On : 09 Dec 2022 18:03  
 Operator : KP/MD  
 Sample : N5943-01  
 Misc : 5.00g/5.0mL/MSVOA\_Y/SOIL  
 ALS Vial : 18 Sample Multiplier: 1

**Instrument :**  
 MSVOA\_Y  
**ClientSampleId :**  
 RM-301

Quant Method : Z:\voasrv\HPCHEM1\MSVOA\_Y\methods\82Y120922S.M  
 Quant Title : SW846 8260

TIC Library : C:\Database\NIST20.L  
 TIC Integration Parameters: LSCINT.P



Library Search Compound Report

Data Path : Z:\voasrv\HPCHEM1\MSVOA\_Y\Data\VY120922\  
Data File : VY011750.D  
Acq On : 09 Dec 2022 18:03  
Operator : KP/MD  
Sample : N5943-01  
Misc : 5.00g/5.0mL/MSVOA\_Y/SOIL  
ALS Vial : 18 Sample Multiplier: 1

Instrument :  
MSVOA\_Y  
ClientSampleId :  
RM-301

Quant Method : Z:\voasrv\HPCHEM1\MSVOA\_Y\methods\82Y120922S.M  
Quant Title : SW846 8260

TIC Library : C:\Database\NIST20.L  
TIC Integration Parameters: LSCINT.P

No Library Search Compounds Detected

\*\*\*\*\*

Data Path : Z:\voasrv\HPCHEM1\MSVOA\_Y\Data\VY120922\  
Data File : VY011750.D  
Acq On : 09 Dec 2022 18:03  
Operator : KP/MD  
Sample : N5943-01  
Misc : 5.00g/5.0mL/MSVOA\_Y/SOIL  
ALS Vial : 18 Sample Multiplier: 1

Instrument :  
MSVOA\_Y  
ClientSampleId :  
RM-301

Quant Method : Z:\voasrv\HPCHEM1\MSVOA\_Y\methods\82Y120922S.M  
Quant Title : SW846 8260

TIC Library : C:\Database\NIST20.L  
TIC Integration Parameters: LSCINT.P

TIC Top Hit name	RT	EstConc	Units	Response	--Internal Standard--		
					#	RT	Resp Conc

---