

Data Path : Z:\voasrv\HPCHEM1\MSVOA\_Y\Data\VY121222\  
 Data File : VY011774.D  
 Acq On : 12 Dec 2022 16:19  
 Operator : KP/MD  
 Sample : N5997-01RE  
 Misc : 5.04g/5.0mL/MSVOA\_Y/SOIL  
 ALS Vial : 18 Sample Multiplier: 1

Instrument :  
 MSVOA\_Y  
 ClientSampleId :  
 2802-COMPRES

Quant Time: Dec 13 00:20:25 2022  
 Quant Method : Z:\voasrv\HPCHEM1\MSVOA\_Y\methods\82Y120922S.M  
 Quant Title : SW846 8260  
 QLast Update : Sat Dec 10 04:19:59 2022  
 Response via : Initial Calibration

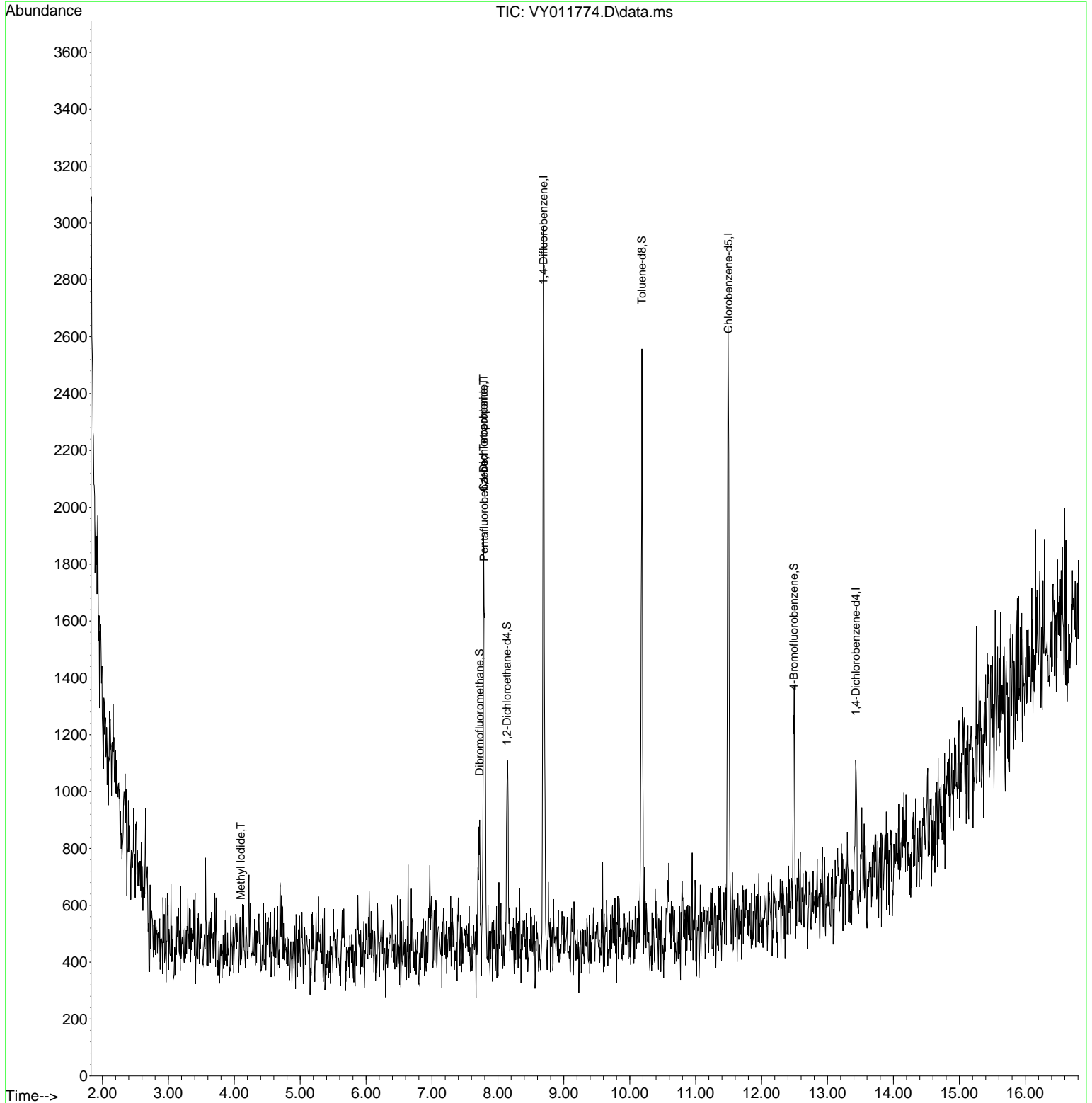
Compound	R.T.	QIon	Response	Conc	Units	Dev(Min)
-----						
Internal Standards						
1) Pentafluorobenzene	7.789	168	1422	50.000	ug/l	0.00
34) 1,4-Difluorobenzene	8.691	114	2453	50.000	ug/l	0.00
63) Chlorobenzene-d5	11.496	117	1501	50.000	ug/l	0.00
72) 1,4-Dichlorobenzene-d4	13.428	152	212	50.000	ug/l	# 0.00
System Monitoring Compounds						
33) 1,2-Dichloroethane-d4	8.137	65	619	65.254	ug/l	0.00
Spiked Amount	50.000	Range	50 - 163	Recovery	=	130.500%
35) Dibromofluoromethane	7.722	113	396	35.183	ug/l	0.00
Spiked Amount	50.000	Range	54 - 147	Recovery	=	70.360%
50) Toluene-d8	10.185	98	1606	44.172	ug/l	0.00
Spiked Amount	50.000	Range	49 - 140	Recovery	=	88.340%
62) 4-Bromofluorobenzene	12.489	95	180	8.902	ug/l	0.00
Spiked Amount	50.000	Range	25 - 144	Recovery	=	17.800%#
Target Compounds						
						Qvalue
10) Methyl Iodide	4.101	142	22	1.610	ug/l	# 38
20) Methylene Chloride	4.698	84	77	Below Cal		# 46
36) 1,1-Dichloropropene	7.783	75	54	2.901	ug/l	# 41
38) Carbon Tetrachloride	7.783	117	171	7.821	ug/l	# 14
-----						

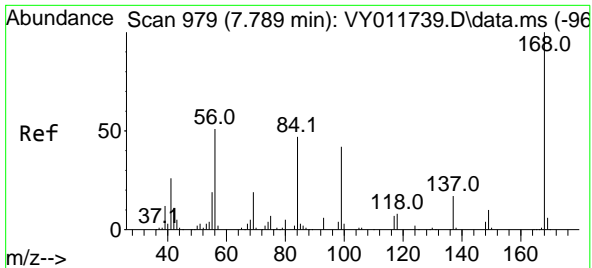
(#) = qualifier out of range (m) = manual integration (+) = signals summed

Data Path : Z:\voasrv\HPCHEM1\MSVOA\_Y\Data\VY121222\  
 Data File : VY011774.D  
 Acq On : 12 Dec 2022 16:19  
 Operator : KP/MD  
 Sample : N5997-01RE  
 Misc : 5.04g/5.0mL/MSVOA\_Y/SOIL  
 ALS Vial : 18 Sample Multiplier: 1

Instrument :  
 MSVOA\_Y  
 ClientSampleId :  
 2802-COMPRE

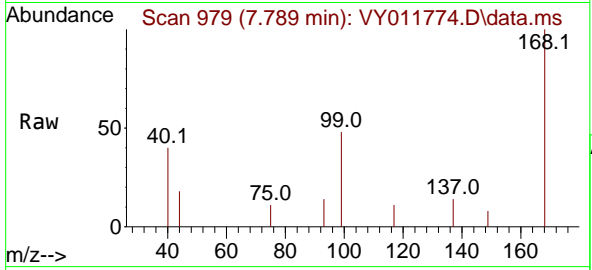
Quant Time: Dec 13 00:20:25 2022  
 Quant Method : Z:\voasrv\HPCHEM1\MSVOA\_Y\methods\82Y120922S.M  
 Quant Title : SW846 8260  
 QLast Update : Sat Dec 10 04:19:59 2022  
 Response via : Initial Calibration



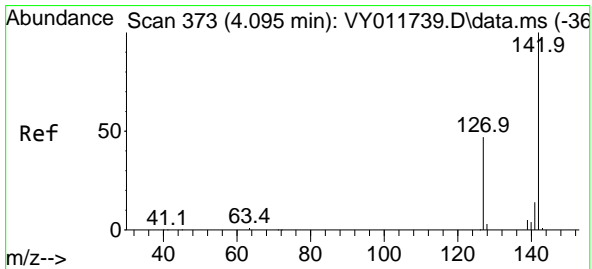
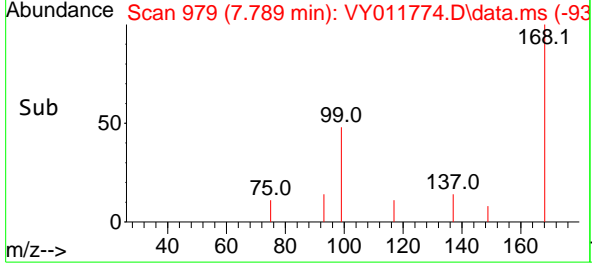
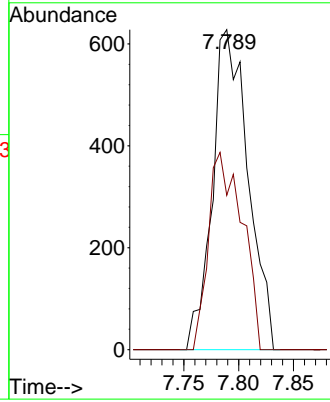


#1  
 Pentafluorobenzene  
 Concen: 50.000 ug/l  
 RT: 7.789 min Scan# 91  
 Delta R.T. 0.000 min  
 Lab File: VY011774.D  
 Acq: 12 Dec 2022 16:19

Instrument : MSVOA\_Y  
 ClientSampleId : 2802-COMPRES

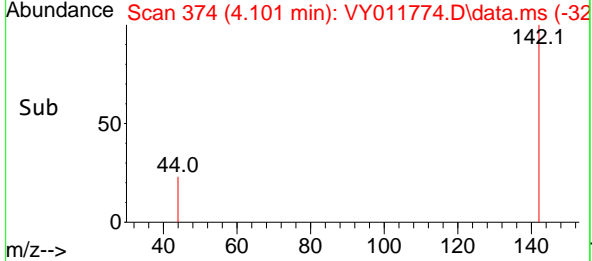
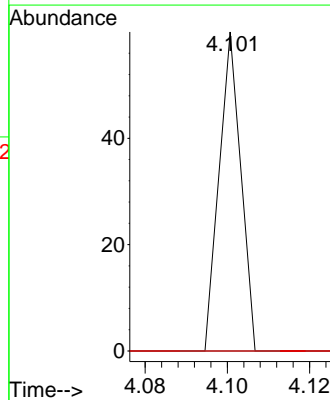
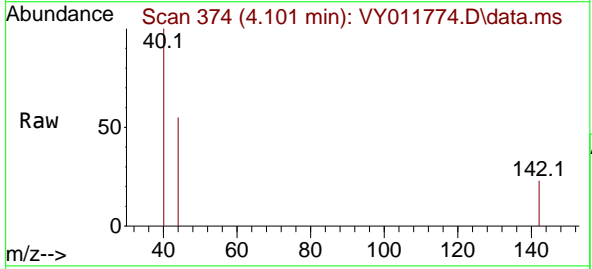


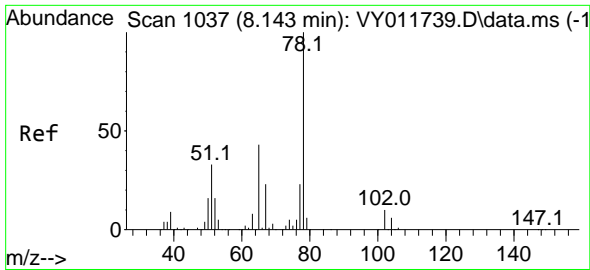
Tgt Ion:168 Resp: 1422  
 Ion Ratio Lower Upper  
 168 100  
 99 48.2 44.0 66.0



#10  
 Methyl Iodide  
 Concen: 1.610 ug/l  
 RT: 4.101 min Scan# 374  
 Delta R.T. 0.006 min  
 Lab File: VY011774.D  
 Acq: 12 Dec 2022 16:19

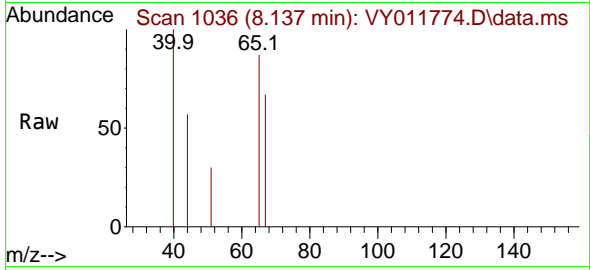
Tgt Ion:142 Resp: 22  
 Ion Ratio Lower Upper  
 142 100  
 127 0.0 37.0 55.4#  
 141 0.0 11.4 17.0#



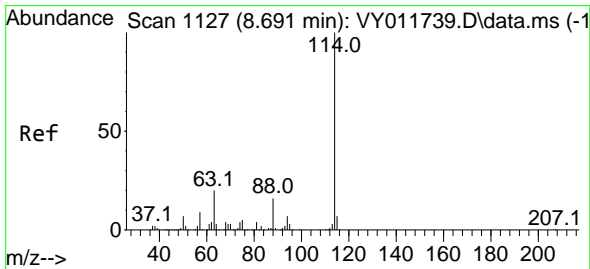
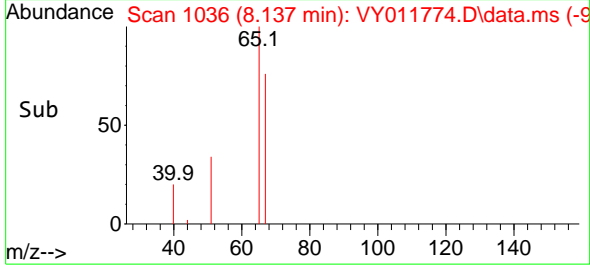
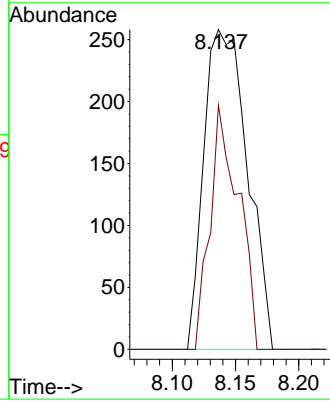


#33  
 1,2-Dichloroethane-d4  
 Concen: 65.254 ug/l  
 RT: 8.137 min Scan# 1036  
 Delta R.T. -0.006 min  
 Lab File: VY011774.D  
 Acq: 12 Dec 2022 16:19

Instrument : MSVOA\_Y  
 ClientSampleId : 2802-COMP

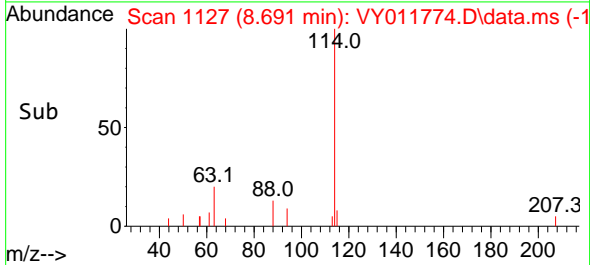
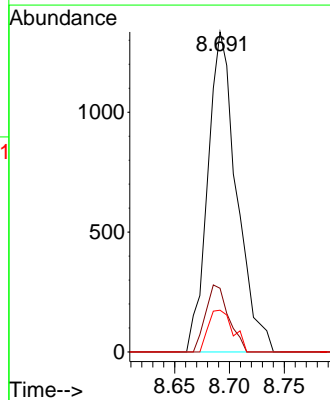
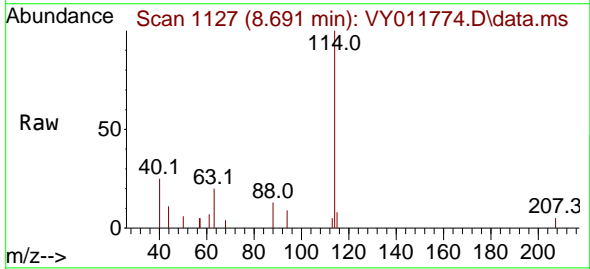


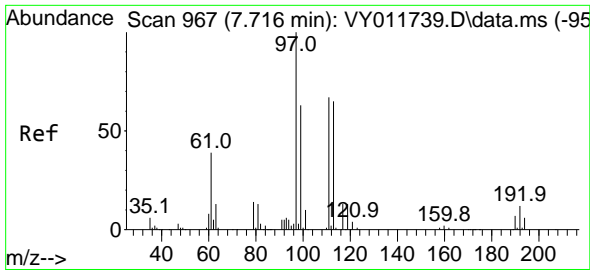
Tgt Ion: 65 Resp: 619  
 Ion Ratio Lower Upper  
 65 100  
 67 49.9 0.0 103.2



#34  
 1,4-Difluorobenzene  
 Concen: 50.000 ug/l  
 RT: 8.691 min Scan# 1127  
 Delta R.T. 0.000 min  
 Lab File: VY011774.D  
 Acq: 12 Dec 2022 16:19

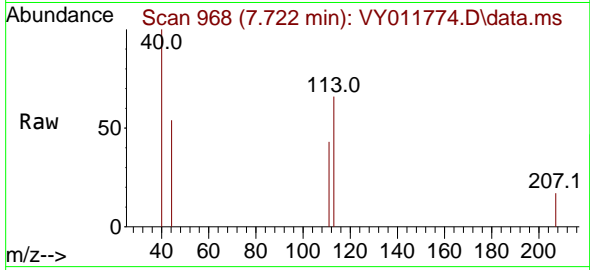
Tgt Ion: 114 Resp: 2453  
 Ion Ratio Lower Upper  
 114 100  
 63 19.9 0.0 39.6  
 88 13.0 0.0 32.2



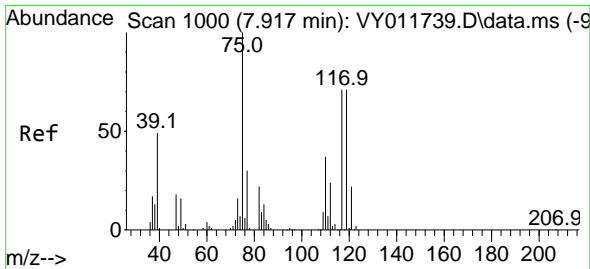
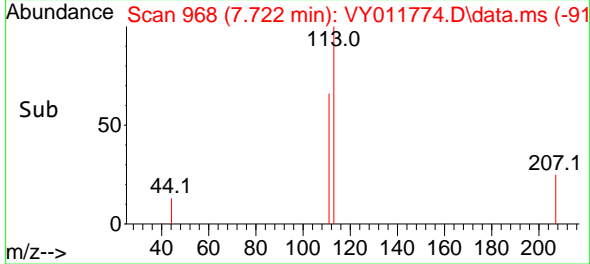
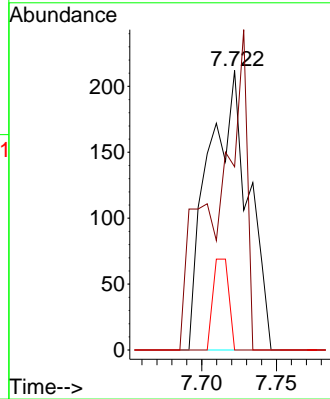


#35  
 Dibromofluoromethane  
 Concen: 35.183 ug/l  
 RT: 7.722 min Scan# 901  
 Delta R.T. 0.006 min  
 Lab File: VY011774.D  
 Acq: 12 Dec 2022 16:19

Instrument : MSVOA\_Y  
 ClientSampleId : 2802-COMPRE

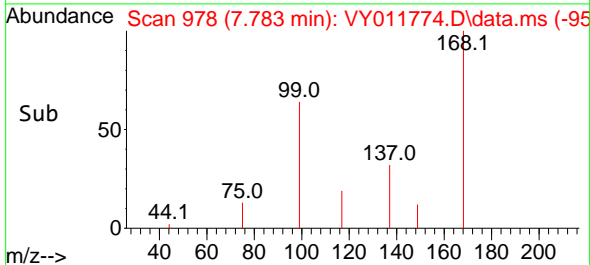
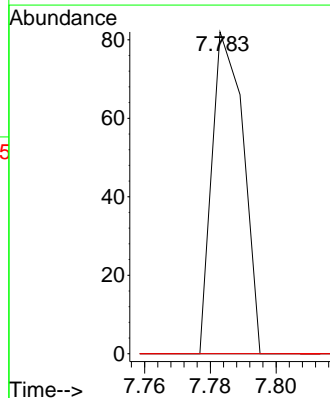
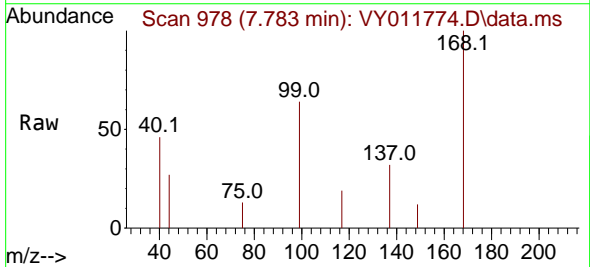


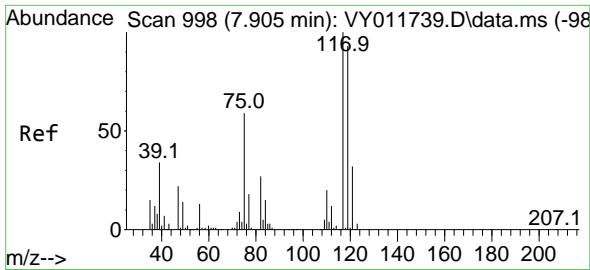
Tgt Ion: 113 Resp: 396  
 Ion Ratio Lower Upper  
 113 100  
 111 86.9 83.0 124.4  
 192 12.6 16.0 24.0#



#36  
 1,1-Dichloropropene  
 Concen: 2.901 ug/l  
 RT: 7.783 min Scan# 978  
 Delta R.T. -0.134 min  
 Lab File: VY011774.D  
 Acq: 12 Dec 2022 16:19

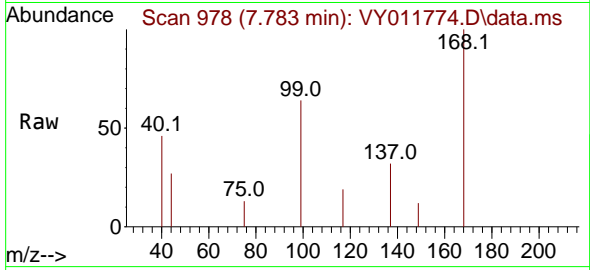
Tgt Ion: 75 Resp: 54  
 Ion Ratio Lower Upper  
 75 100  
 110 0.0 18.1 54.1#  
 77 0.0 25.1 37.7#



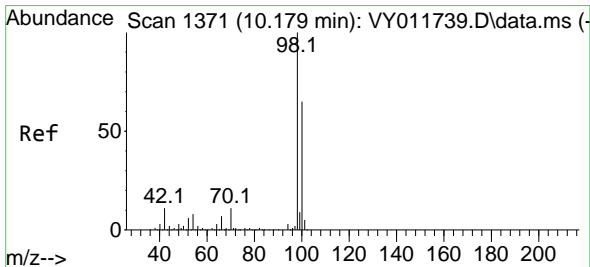
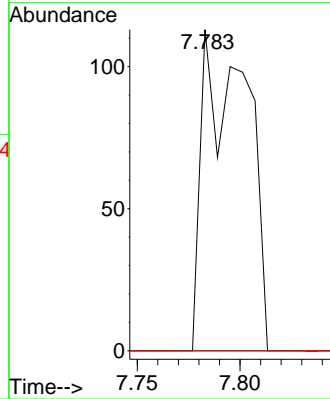
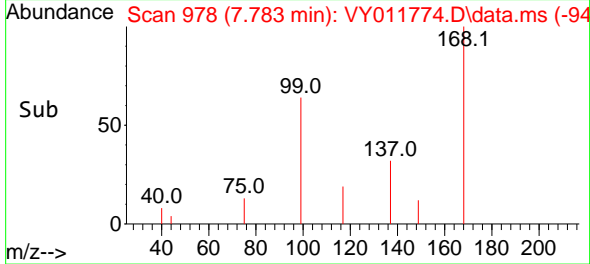


#38  
 Carbon Tetrachloride  
 Concen: 7.821 ug/l  
 RT: 7.783 min Scan# 91  
 Delta R.T. -0.122 min  
 Lab File: VY011774.D  
 Acq: 12 Dec 2022 16:19

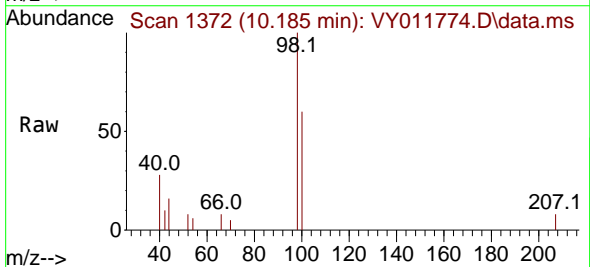
Instrument : MSVOA\_Y  
 ClientSampleId : 2802-COMP



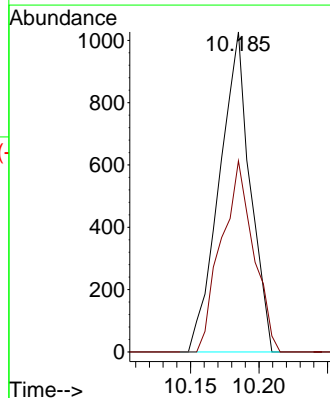
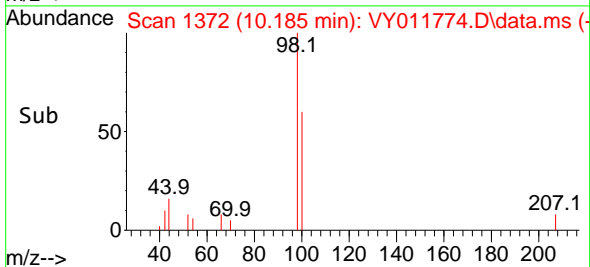
Tgt Ion:117 Resp: 171  
 Ion Ratio Lower Upper  
 117 100  
 119 0.0 73.8 110.8#  
 121 0.0 25.2 37.8#

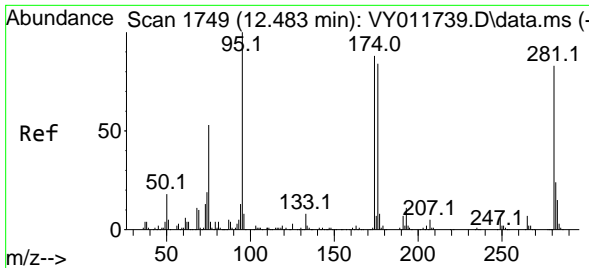


#50  
 Toluene-d8  
 Concen: 44.172 ug/l  
 RT: 10.185 min Scan# 1372  
 Delta R.T. 0.006 min  
 Lab File: VY011774.D  
 Acq: 12 Dec 2022 16:19



Tgt Ion: 98 Resp: 1606  
 Ion Ratio Lower Upper  
 98 100  
 100 62.6 51.9 77.9

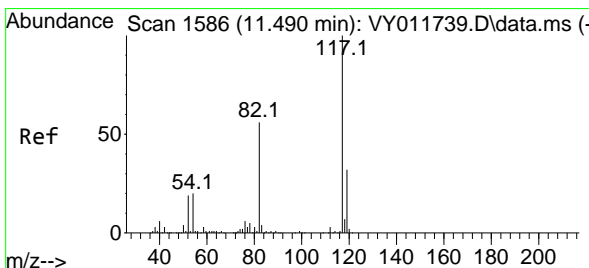
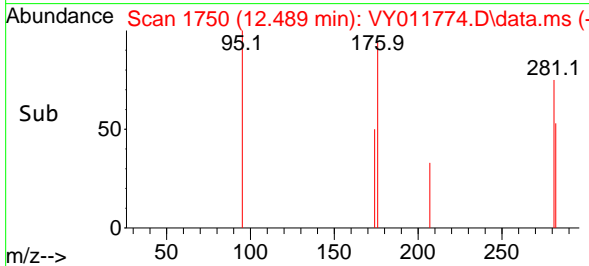
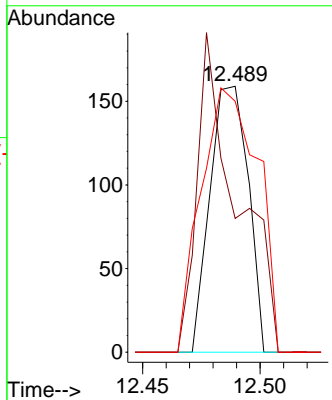
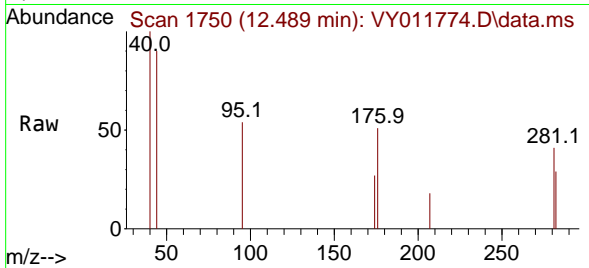




#62  
 4-Bromofluorobenzene  
 Concen: 8.902 ug/l  
 RT: 12.489 min Scan# 11  
 Delta R.T. 0.006 min  
 Lab File: VY011774.D  
 Acq: 12 Dec 2022 16:19

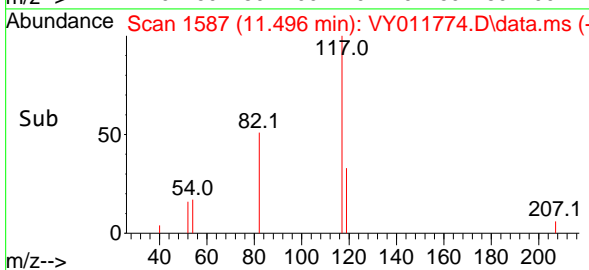
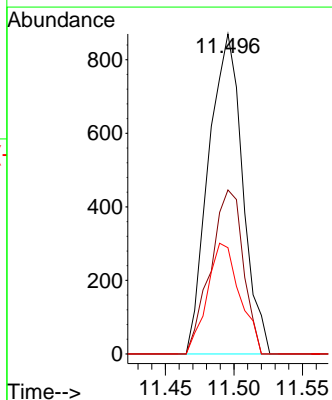
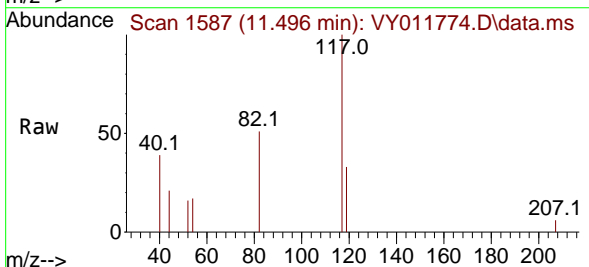
Instrument : MSVOA\_Y  
 ClientSampleId : 2802-COMPRE

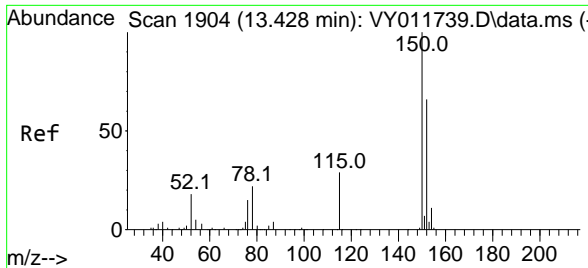
Tgt Ion: 95 Resp: 180  
 Ion Ratio Lower Upper  
 95 100  
 174 123.9 0.0 172.0  
 176 147.2 0.0 167.6



#63  
 Chlorobenzene-d5  
 Concen: 50.000 ug/l  
 RT: 11.496 min Scan# 1587  
 Delta R.T. 0.006 min  
 Lab File: VY011774.D  
 Acq: 12 Dec 2022 16:19

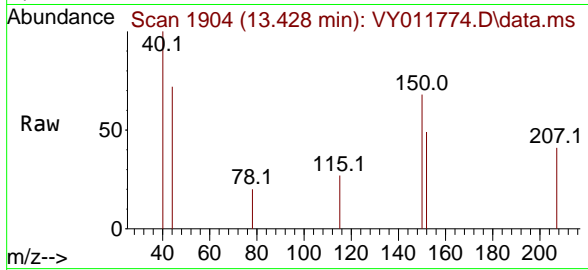
Tgt Ion:117 Resp: 1501  
 Ion Ratio Lower Upper  
 117 100  
 82 51.3 44.8 67.2  
 119 33.2 25.4 38.2





#72  
 1,4-Dichlorobenzene-d4  
 Concen: 50.000 ug/l  
 RT: 13.428 min Scan# 1904  
 Delta R.T. 0.000 min  
 Lab File: VY011774.D  
 Acq: 12 Dec 2022 16:19

Instrument : MSVOA\_Y  
 ClientSampleId : 2802-COMP



Tgt Ion	Ratio	Lower	Upper
152	100		
115	13.7	29.1	87.3#
150	202.8	0.0	342.6

