

Data Path : Z:\voasrv\HPCHEM1\MSVOA\_Y\Data\VY121520\  
 Data File : VY003778.D  
 Acq On : 15 Dec 2020 16:52  
 Operator : SY/MD  
 Sample : L5009-04  
 Misc : 2.51G/5ML/MSVOA\_Y/SOIL  
 ALS Vial : 14 Sample Multiplier: 1

Instrument :  
 MSVOA\_Y  
 ClientSampleId :  
 KENS-B5-120920-13-15

Integration Parameters: RTEINT.P  
 Integrator: RTE  
 Smoothing : ON Filtering: 5  
 Sampling : 1 Min Area: 3 % of Largest Peak  
 Start Thrs: 0.2 Max Peaks: 100  
 Stop Thrs : 0 Peak Location: TOP

If leading or trailing edge < 100 prefer < Baseline drop else tangent >  
 Peak separation: 5

Method : Z:\VOASRV\HPCHEM1\MSVOA\_Y\METHODS\82Y121520S.M  
 Title : SW846 8260

Signal : TIC: VY003778.D\data.ms

peak #	R.T. min	first scan	max scan	last scan	PK TY	peak height	corr. area	corr. % max.	% of total
1	3.966	342	352	364	rBV2	10481	32026	2.60%	0.456%
2	4.204	382	391	398	rBV	5682	15527	1.26%	0.221%
3	4.735	466	478	492	rVB2	12187	38466	3.12%	0.548%
4	5.765	636	647	659	rVB3	5052	16215	1.31%	0.231%
5	7.009	841	851	874	rBV2	19474	92125	7.46%	1.312%
6	7.728	955	969	975	rBV2	170233	411785	33.37%	5.865%
7	7.801	975	981	991	rVB	292138	658067	53.32%	9.372%
8	8.149	1024	1038	1050	rVB2	217558	623639	50.53%	8.882%
9	8.539	1095	1102	1110	rBV2	6543	12790	1.04%	0.182%
10	8.697	1119	1128	1142	rBV	445018	884563	71.68%	12.598%
11	10.185	1363	1372	1380	rBV	710192	1234098	100.00%	17.576%
12	10.581	1431	1437	1443	rBV2	10861	17978	1.46%	0.256%
13	10.959	1493	1499	1507	rBV	8810	20246	1.64%	0.288%
14	11.319	1552	1558	1565	rVB	24487	41637	3.37%	0.593%
15	11.490	1579	1586	1595	rBV	664254	1056210	85.59%	15.043%
16	12.337	1718	1725	1729	rBV2	8901	14490	1.17%	0.206%
17	12.483	1737	1749	1759	rBV	527741	836023	67.74%	11.907%
18	13.422	1896	1903	1911	rVB	652133	1015431	82.28%	14.462%

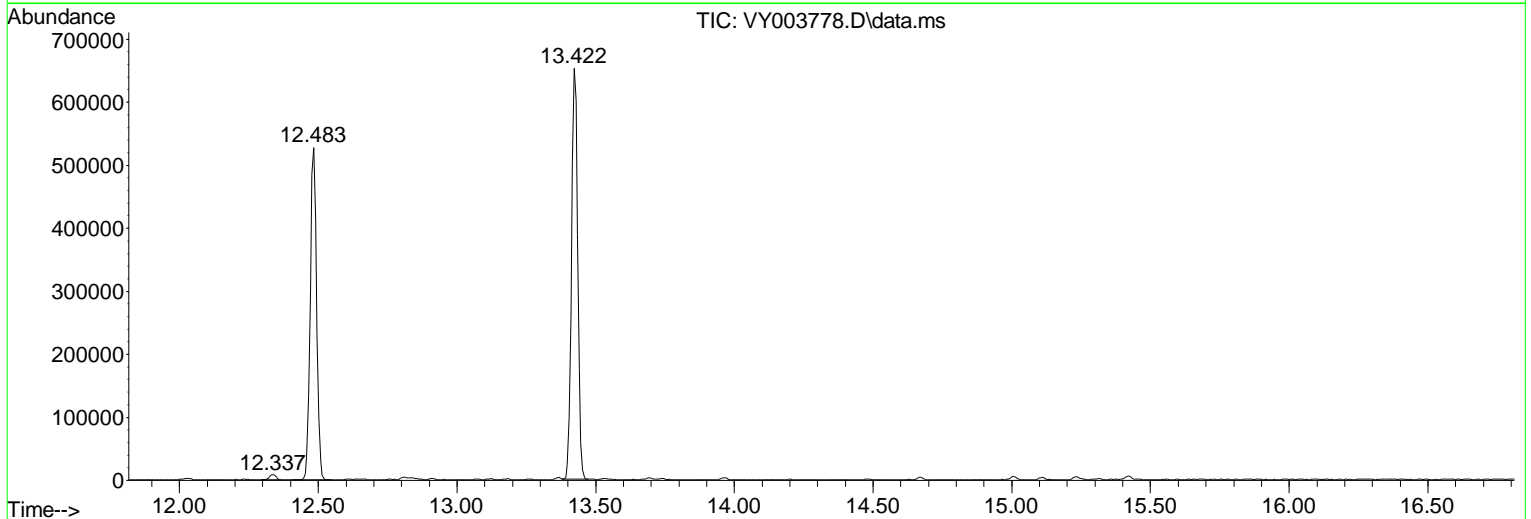
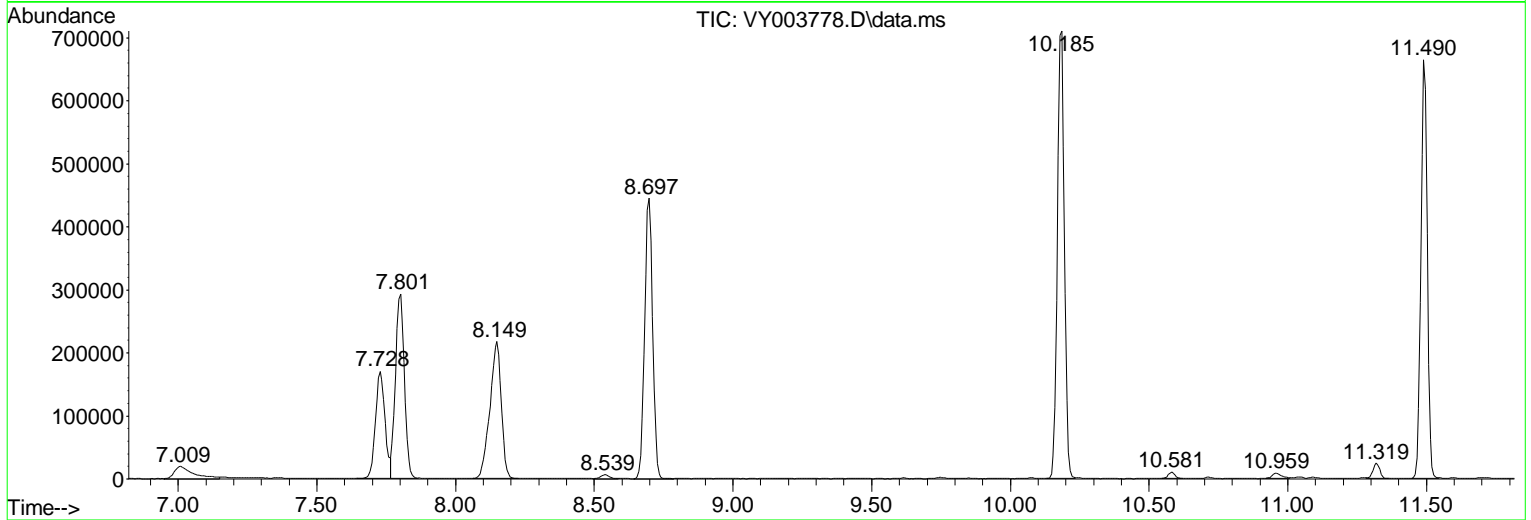
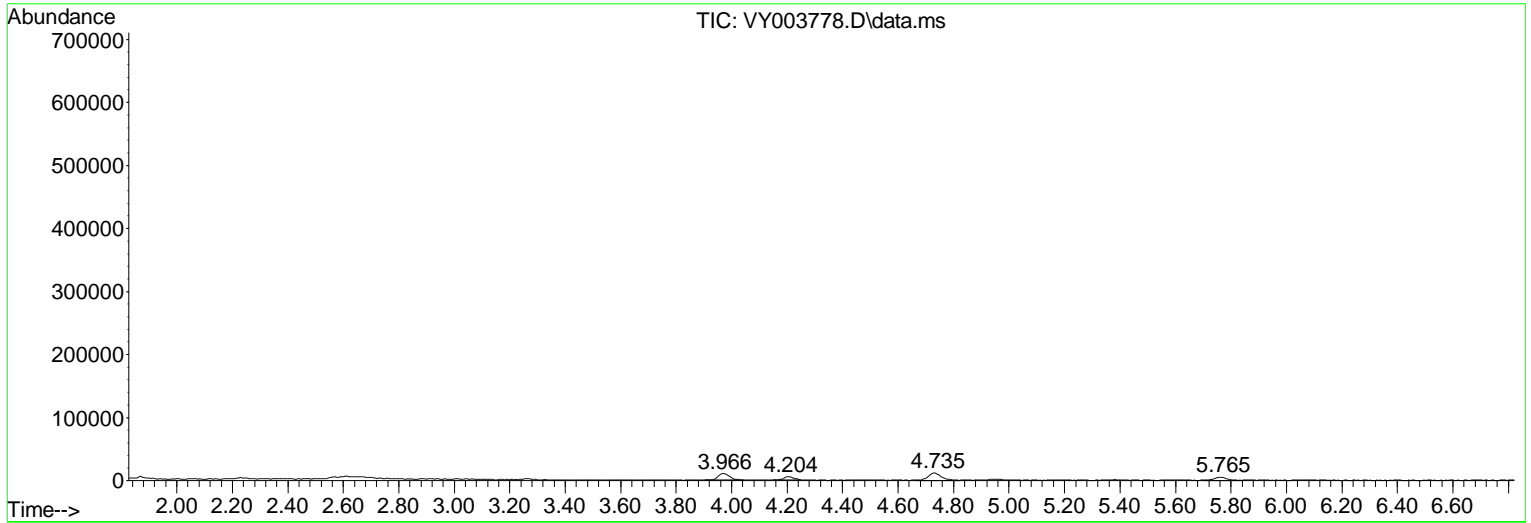
Sum of corrected areas: 7021316

Data Path : Z:\voasrv\HPCHEM1\MSVOA\_Y\Data\VY121520\  
 Data File : VY003778.D  
 Acq On : 15 Dec 2020 16:52  
 Operator : SY/MD  
 Sample : L5009-04  
 Misc : 2.51G/5ML/MSVOA\_Y/SOIL  
 ALS Vial : 14 Sample Multiplier: 1

**Instrument :**  
 MSVOA\_Y  
**ClientSampleId :**  
 KENS-B5-120920-13-15

Quant Method : Z:\VOASRV\HPCHEM1\MSVOA\_Y\METHODS\82Y121520S.M  
 Quant Title : SW846 8260

TIC Library : C:\DATABASE\NI ST11.L  
 TIC Integration Parameters: LSCINT.P



Data Path : Z:\voasrv\HPCHEM1\MSVOA\_Y\Data\VY121520\  
Data File : VY003778.D  
Acq On : 15 Dec 2020 16:52  
Operator : SY/MD  
Sample : L5009-04  
Misc : 2.51G/5ML/MSVOA\_Y/SOIL  
ALS Vial : 14 Sample Multiplier: 1

**Instrument :**  
MSVOA\_Y  
**ClientSampleId :**  
KENS-B5-120920-13-15

Quant Method : Z:\VOASRV\HPCHEM1\MSVOA\_Y\METHODS\82Y121520S.M  
Quant Title : SW846 8260

TIC Library : C:\DATABASE\NIST11.L  
TIC Integration Parameters: LSCINT.P

No Library Search Compounds Detected

\*\*\*\*\*

Data Path : Z:\voasrv\HPCHEM1\MSVOA\_Y\Data\VY121520\  
Data File : VY003778.D  
Acq On : 15 Dec 2020 16:52  
Operator : SY/MD  
Sample : L5009-04  
Misc : 2.51G/5ML/MSVOA\_Y/SOIL  
ALS Vial : 14 Sample Multiplier: 1

**Instrument :**  
MSVOA\_Y  
**ClientSampleId :**  
KENS-B5-120920-13-15

Quant Method : Z:\VOASRV\HPCHEM1\MSVOA\_Y\METHODS\82Y121520S.M  
Quant Title : SW846 8260

TIC Library : C:\DATABASE\NI ST11.L  
TIC Integration Parameters: LSCINT.P

TIC Top Hit name	RT	EstConc	Units	Response	--Internal Standard--		
					#	RT	Resp Conc

---