

Data Path : Z:\voasrv\HPCHEM1\MSVOA_Y\Data\VY011422\
 Data File : VY007165.D
 Acq On : 14 Jan 2022 13:47
 Operator : SY/MD
 Sample : N1119-04
 Misc : 5.48g/5.0mL/MSVOA_Y/SOIL
 ALS Vial : 11 Sample Multiplier: 1

Instrument :
 MSVOA_Y
ClientSampleId :
 NORTH-EAST-CORNER-EXCAVATION-EAST-SIDEWALL

Quant Time: Jan 14 14:39:19 2022
 Quant Method : Z:\voasrv\HPCHEM1\MSVOA_Y\methods\82Y011322S.M
 Quant Title : SW846 8260
 QLast Update : Fri Jan 14 05:48:29 2022
 Response via : Initial Calibration

Compound	R.T.	QIon	Response	Conc	Units	Dev(Min)

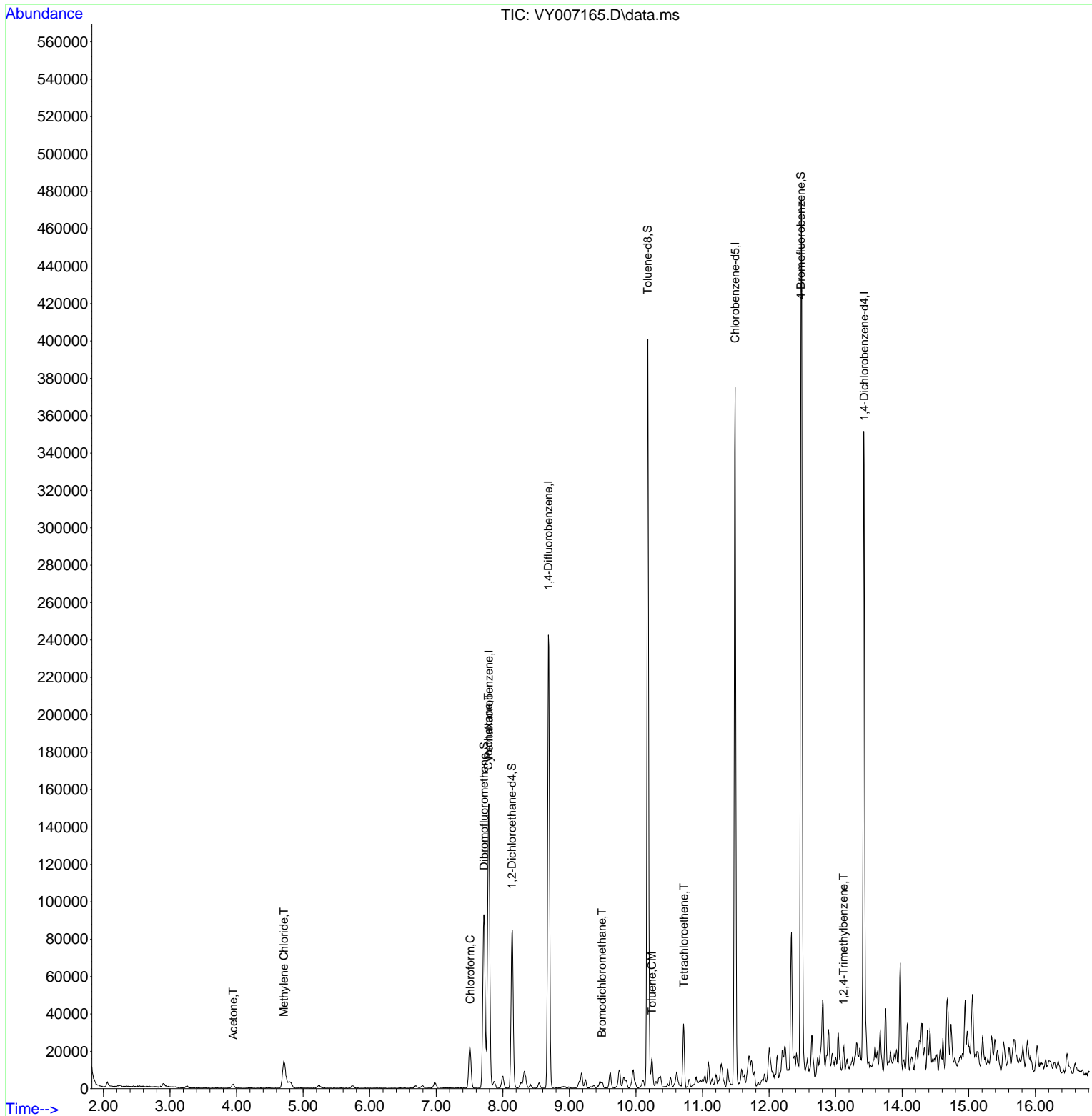
Internal Standards						
1) Pentafluorobenzene	7.789	168	108279	50.000	ug/l	0.00
34) 1,4-Difluorobenzene	8.685	114	200893	50.000	ug/l	0.00
63) Chlorobenzene-d5	11.490	117	190971	50.000	ug/l	0.00
72) 1,4-Dichlorobenzene-d4	13.428	152	81287	50.000	ug/l	0.00
System Monitoring Compounds						
33) 1,2-Dichloroethane-d4	8.136	65	69664	52.434	ug/l	0.00
Spiked Amount	50.000	Range	50 - 163	Recovery	=	104.860%
35) Dibromofluoromethane	7.716	113	66777	49.158	ug/l	0.00
Spiked Amount	50.000	Range	54 - 147	Recovery	=	98.320%
50) Toluene-d8	10.179	98	246952	49.753	ug/l	0.00
Spiked Amount	50.000	Range	49 - 140	Recovery	=	99.500%
62) 4-Bromofluorobenzene	12.477	95	91117	51.606	ug/l	0.00
Spiked Amount	50.000	Range	25 - 144	Recovery	=	103.220%
Target Compounds						
						Qvalue
16) Acetone	3.948	43	3686	10.690	ug/l	92
20) Methylene Chloride	4.710	84	10806	7.579	ug/l #	94
30) Chloroform	7.509	83	22106	8.788	ug/l	99
31) Cyclohexane	7.783	56	3765	1.676	ug/l #	39
47) Bromodichloromethane	9.490	83	2230	1.042	ug/l	96
52) Toluene	10.240	92	6219	1.695	ug/l	97
64) Tetrachloroethene	10.721	164	5928	4.307	ug/l	85
84) 1,2,4-Trimethylbenzene	13.117	105	6158	1.078	ug/l	99

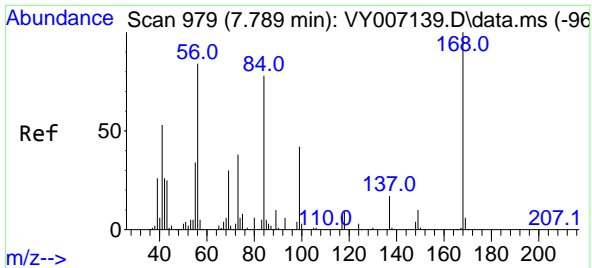
(#) = qualifier out of range (m) = manual integration (+) = signals summed

Data Path : Z:\voasrv\HPCHEM1\MSVOA_Y\Data\VY011422\
 Data File : VY007165.D
 Acq On : 14 Jan 2022 13:47
 Operator : SY/MD
 Sample : N1119-04
 Misc : 5.48g/5.0mL/MSVOA_Y/SOIL
 ALS Vial : 11 Sample Multiplier: 1

Instrument :
 MSVOA_Y
ClientSampleId :
 NORTH-EAST-CORNER-EXCAVATION-EAST-SIDEWALL

Quant Time: Jan 14 14:39:19 2022
 Quant Method : Z:\voasrv\HPCHEM1\MSVOA_Y\methods\82Y011322S.M
 Quant Title : SW846 8260
 QLast Update : Fri Jan 14 05:48:29 2022
 Response via : Initial Calibration

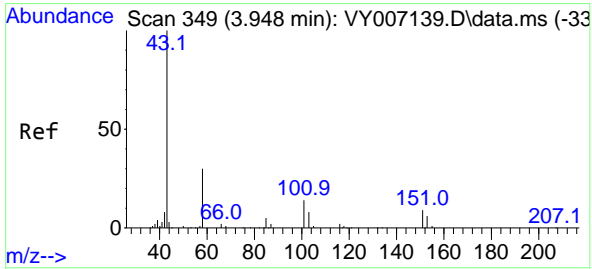
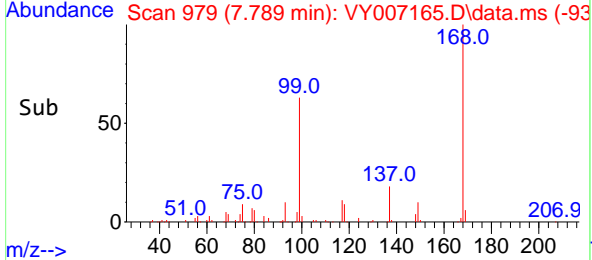
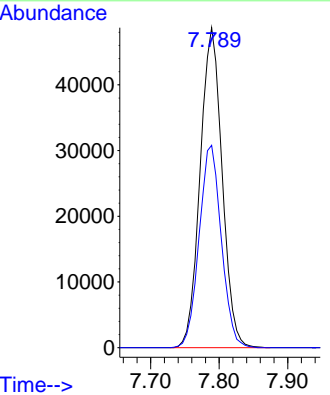
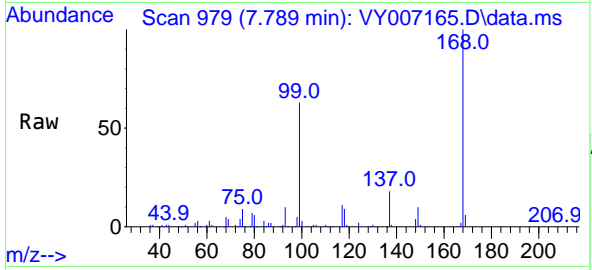




#1
 Pentafluorobenzene
 Concen: 50.000 ug/l
 RT: 7.789 min Scan# 91
 Delta R.T. -0.000 min
 Lab File: VY007165.D
 Acq: 14 Jan 2022 13:47

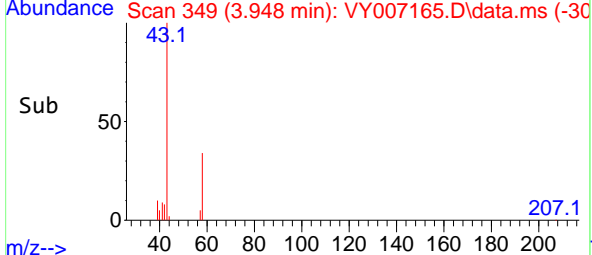
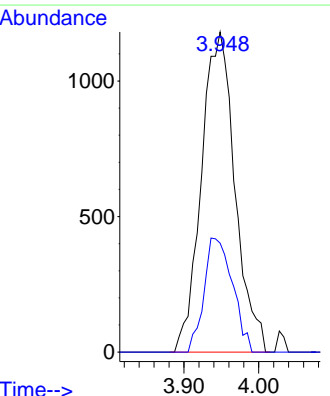
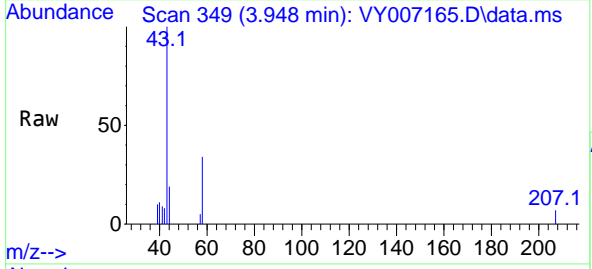
Instrument : MSVOA_Y
 ClientSampleId : NORTH-EAST-CORNER-EXCAVATION-EAST-SIDEWALL

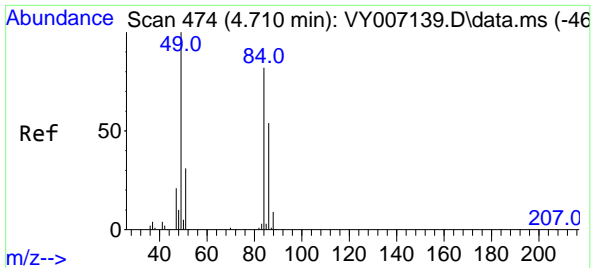
Tgt Ion:168 Resp: 108279
 Ion Ratio Lower Upper
 168 100
 99 63.3 49.1 73.7



#16
 Acetone
 Concen: 10.690 ug/l
 RT: 3.948 min Scan# 349
 Delta R.T. 0.000 min
 Lab File: VY007165.D
 Acq: 14 Jan 2022 13:47

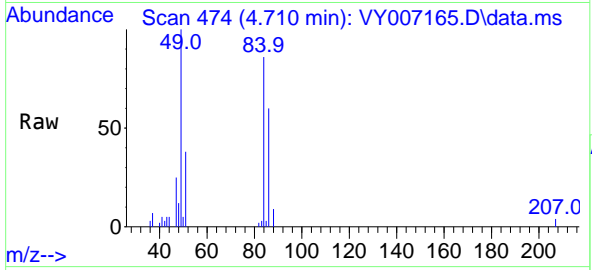
Tgt Ion: 43 Resp: 3686
 Ion Ratio Lower Upper
 43 100
 58 34.0 23.8 35.6





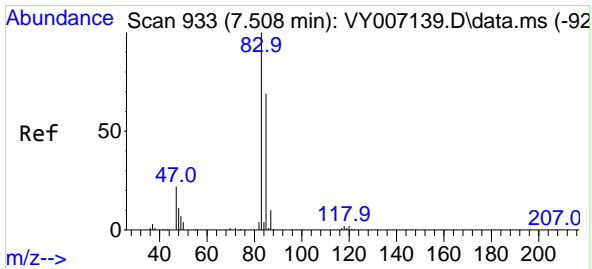
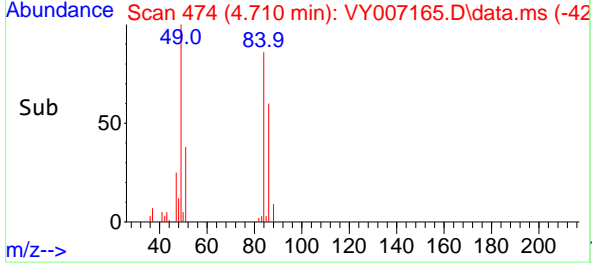
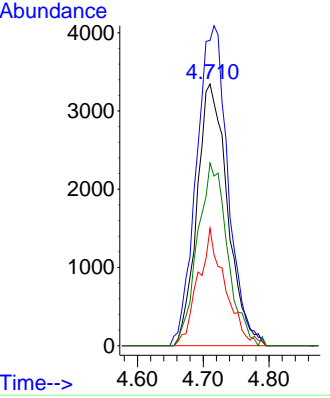
#20
 Methylene Chloride
 Concen: 7.579 ug/l
 RT: 4.710 min Scan# 41
 Delta R.T. 0.000 min
 Lab File: VY007165.D
 Acq: 14 Jan 2022 13:47

Instrument : MSVOA_Y
 ClientSampleId : NORTH-EAST-CORNER-EXCAVATION-EAST-SIDEWALL

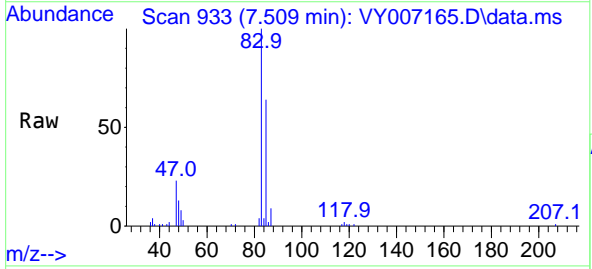


Tgt Ion: 84 Resp: 10806

Ion	Ratio	Lower	Upper
84	100		
49	116.7	92.6	139.0
51	44.8	28.6	42.8
86	69.8	50.1	75.1

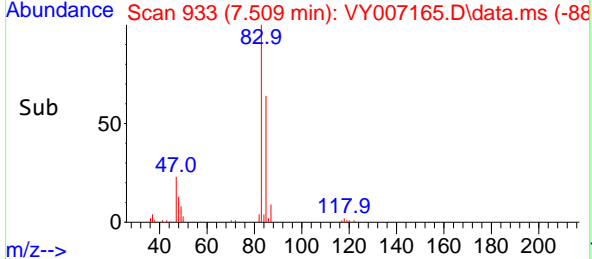
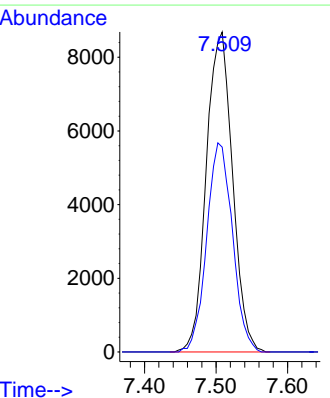


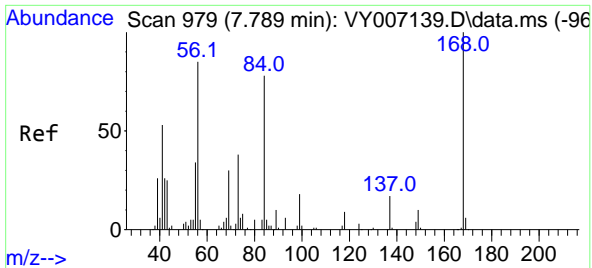
#30
 Chloroform
 Concen: 8.788 ug/l
 RT: 7.509 min Scan# 933
 Delta R.T. 0.000 min
 Lab File: VY007165.D
 Acq: 14 Jan 2022 13:47



Tgt Ion: 83 Resp: 22106

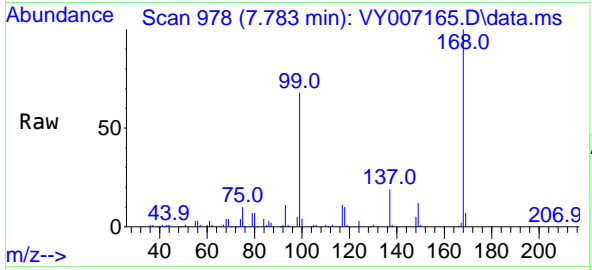
Ion	Ratio	Lower	Upper
83	100		
85	64.0	50.9	76.3



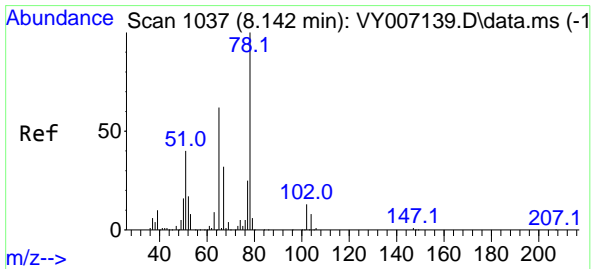
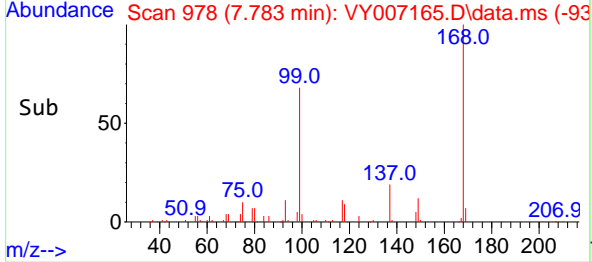
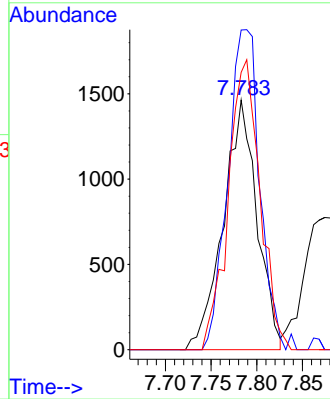


#31
 Cyclohexane
 Concen: 1.676 ug/l
 RT: 7.783 min Scan# 91
 Delta R.T. -0.006 min
 Lab File: VY007165.D
 Acq: 14 Jan 2022 13:47

Instrument : MSVOA_Y
 ClientSampleId : NORTH-EAST-CORNER-EXCAVATION-EAST-SIDEWALL

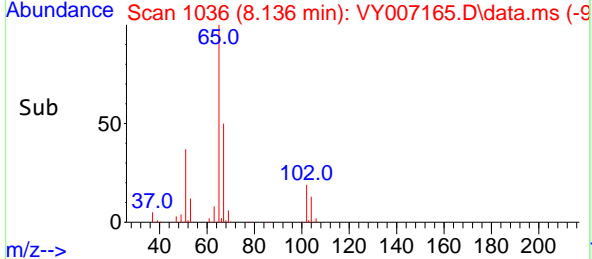
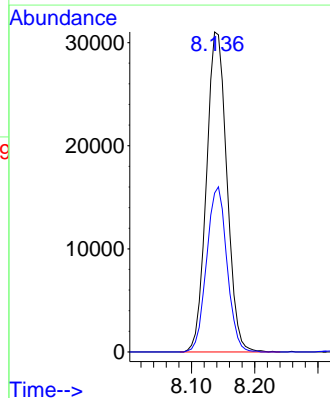
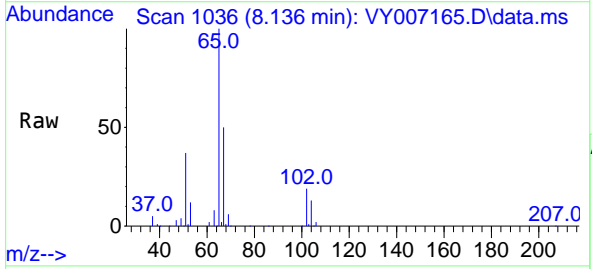


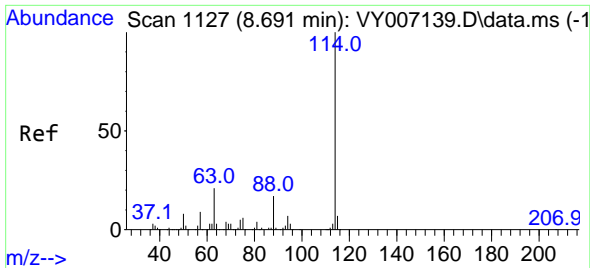
Tgt Ion: 56 Resp: 3765
 Ion Ratio Lower Upper
 56 100
 69 128.1 27.2 40.8#
 84 111.1 72.1 108.1#



#33
 1,2-Dichloroethane-d4
 Concen: 52.434 ug/l
 RT: 8.136 min Scan# 1036
 Delta R.T. -0.006 min
 Lab File: VY007165.D
 Acq: 14 Jan 2022 13:47

Tgt Ion: 65 Resp: 69664
 Ion Ratio Lower Upper
 65 100
 67 51.4 0.0 105.6



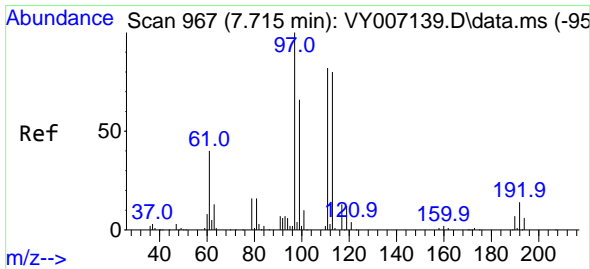
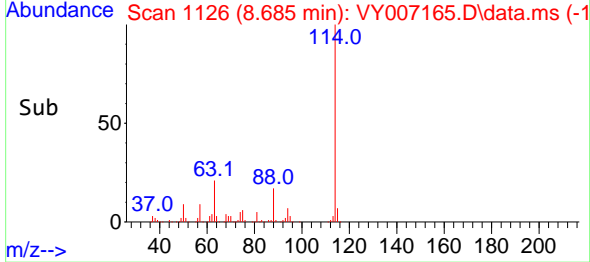
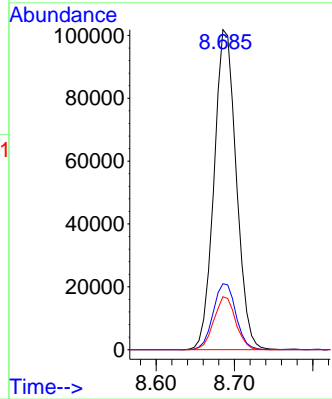
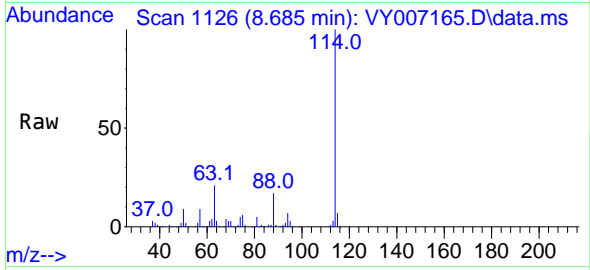


#34
 1,4-Difluorobenzene
 Concen: 50.000 ug/l
 RT: 8.685 min Scan# 1126
 Delta R.T. -0.006 min
 Lab File: VY007165.D
 Acq: 14 Jan 2022 13:47

Instrument : MSVOA_Y
 ClientSampleId : NORTH-EAST-CORNER-EXCAVATION-EAST-SIDEWALL

Tgt Ion:114 Resp: 200893

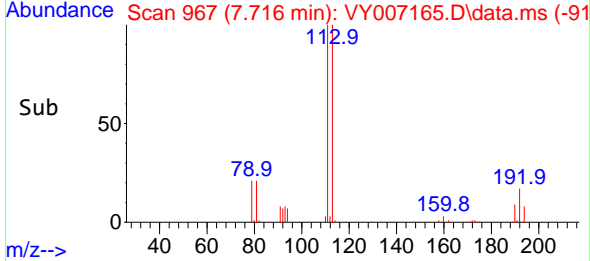
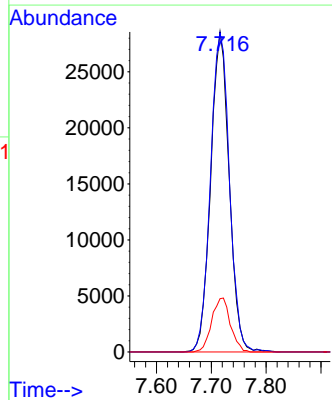
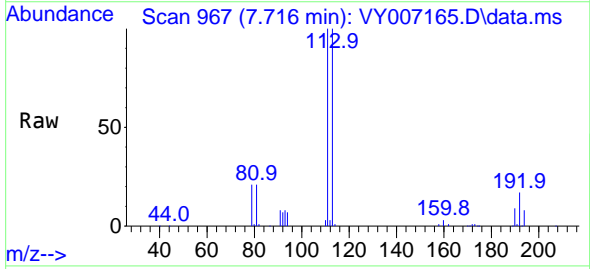
Ion	Ratio	Lower	Upper
114	100		
63	20.6	0.0	39.2
88	16.5	0.0	31.0

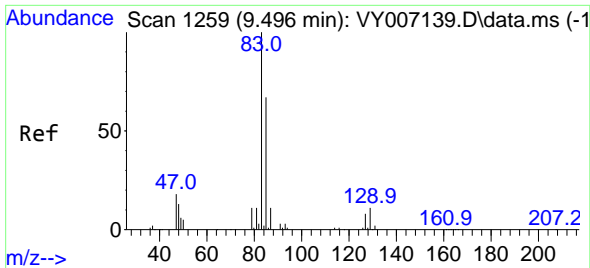


#35
 Dibromofluoromethane
 Concen: 49.158 ug/l
 RT: 7.716 min Scan# 967
 Delta R.T. 0.000 min
 Lab File: VY007165.D
 Acq: 14 Jan 2022 13:47

Tgt Ion:113 Resp: 66777

Ion	Ratio	Lower	Upper
113	100		
111	102.7	82.2	123.4
192	17.0	14.2	21.4

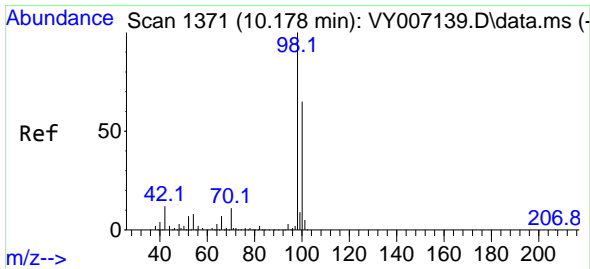
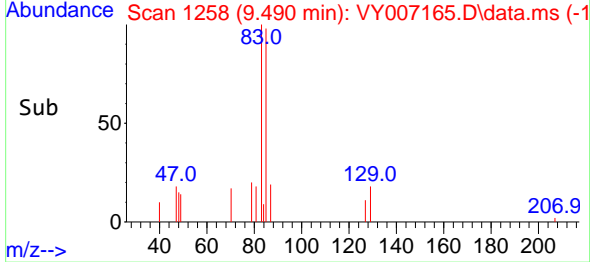
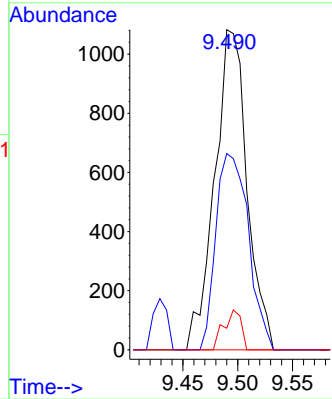
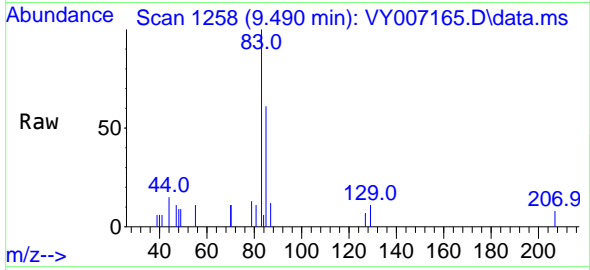




#47
 Bromodichloromethane
 Concen: 1.042 ug/l
 RT: 9.490 min Scan# 1258
 Delta R.T. -0.006 min
 Lab File: VY007165.D
 Acq: 14 Jan 2022 13:47

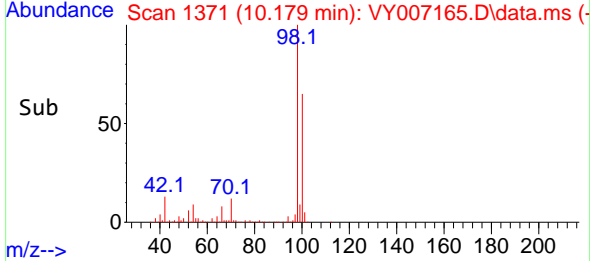
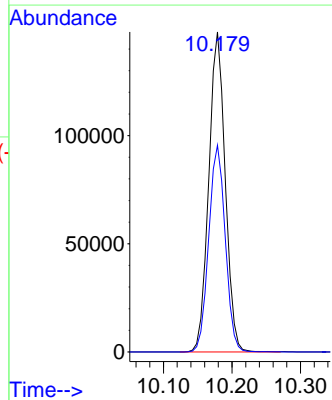
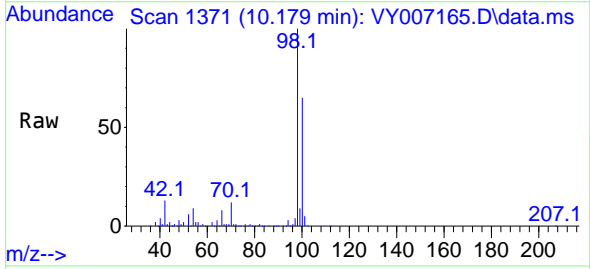
Instrument : MSVOA_Y
 ClientSampleId : NORTH-EAST-CORNER-EXCAVATION-EAST-SIDEWALL

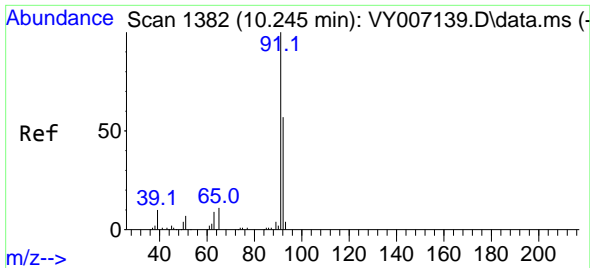
Tgt Ion	Resp	Lower	Upper
83	2230		
85	61.3	51.4	77.2
127	6.7	6.5	9.7



#50
 Toluene-d8
 Concen: 49.753 ug/l
 RT: 10.179 min Scan# 1371
 Delta R.T. 0.000 min
 Lab File: VY007165.D
 Acq: 14 Jan 2022 13:47

Tgt Ion	Resp	Lower	Upper
98	246952		
100	64.9	52.2	78.2

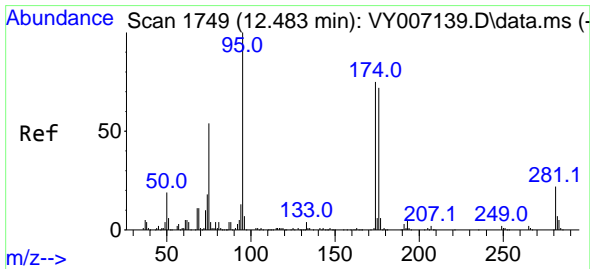
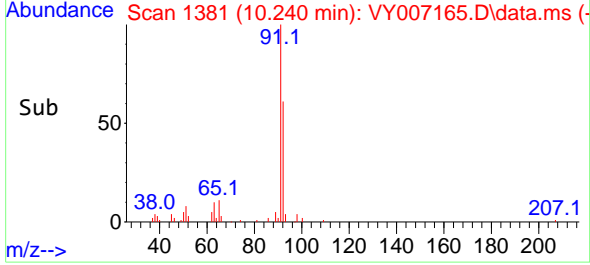
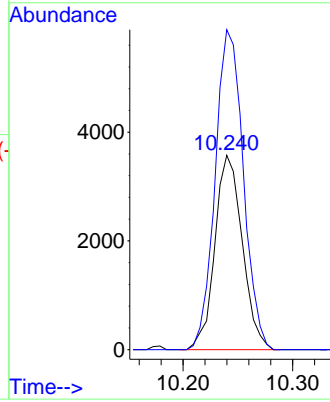
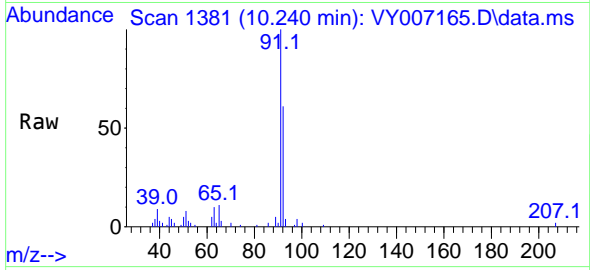




#52
 Toluene
 Concen: 1.695 ug/l
 RT: 10.240 min Scan# 11
 Delta R.T. -0.006 min
 Lab File: VY007165.D
 Acq: 14 Jan 2022 13:47

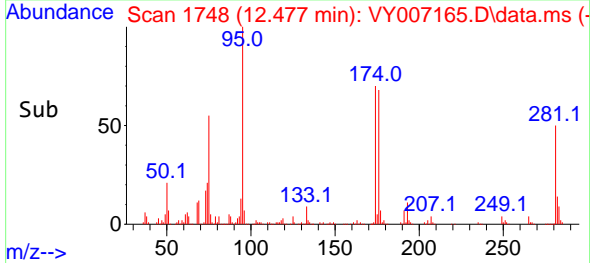
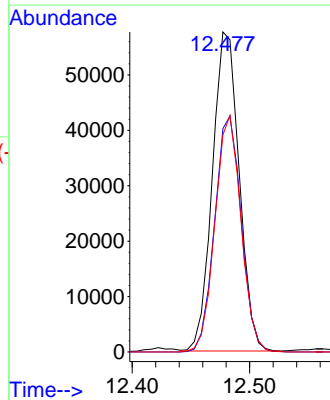
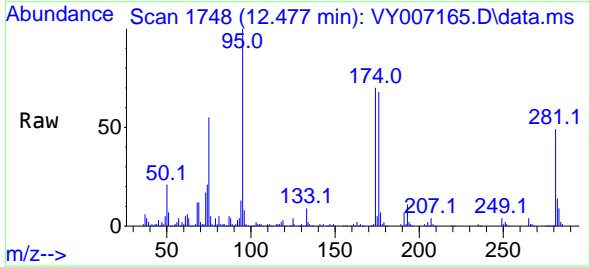
Instrument : MSVOA_Y
 ClientSampleId : NORTH-EAST-CORNER-EXCAVATION-EAST-SIDEWALL

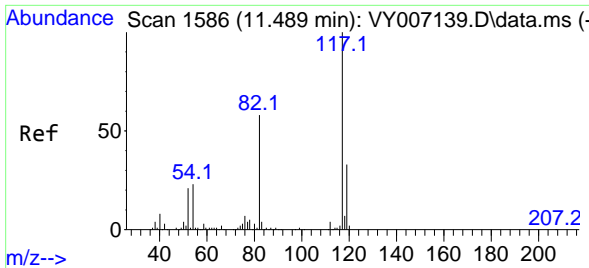
Tgt Ion: 92 Resp: 6219
 Ion Ratio Lower Upper
 92 100
 91 169.0 138.6 207.8



#62
 4-Bromofluorobenzene
 Concen: 51.606 ug/l
 RT: 12.477 min Scan# 1748
 Delta R.T. -0.006 min
 Lab File: VY007165.D
 Acq: 14 Jan 2022 13:47

Tgt Ion: 95 Resp: 91117
 Ion Ratio Lower Upper
 95 100
 174 73.5 0.0 148.4
 176 71.9 0.0 146.6



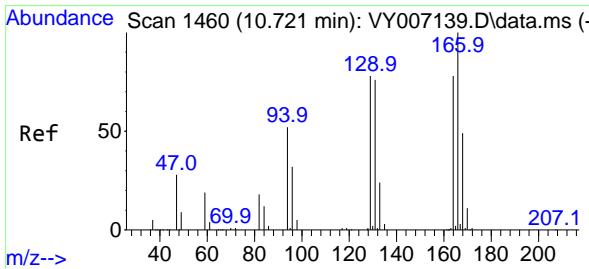
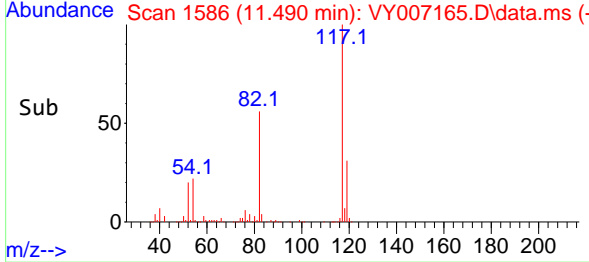
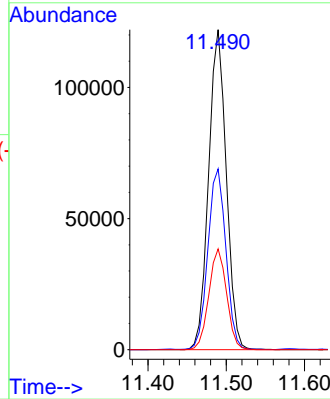
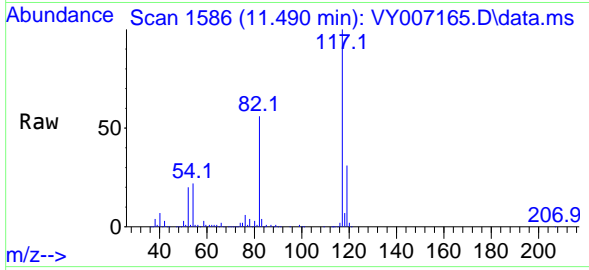


#63
 Chlorobenzene-d5
 Concen: 50.000 ug/l
 RT: 11.490 min Scan# 117
 Delta R.T. 0.000 min
 Lab File: VY007165.D
 Acq: 14 Jan 2022 13:47

Instrument : MSVOA_Y
 ClientSampleId : NORTH-EAST-CORNER-EXCAVATION-EAST-SIDEWALL

Tgt Ion:117 Resp: 190971

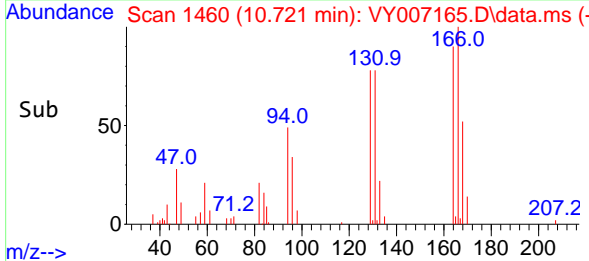
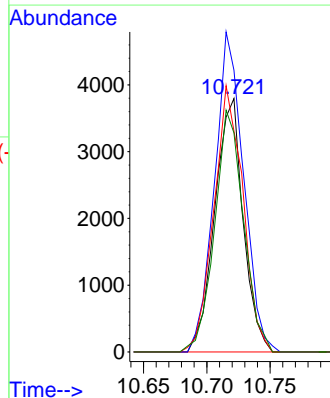
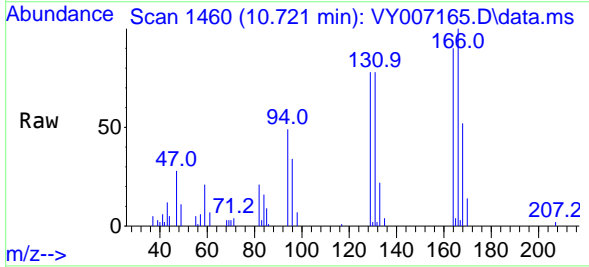
Ion	Ratio	Lower	Upper
117	100		
82	56.4	45.4	68.0
119	31.5	26.4	39.6

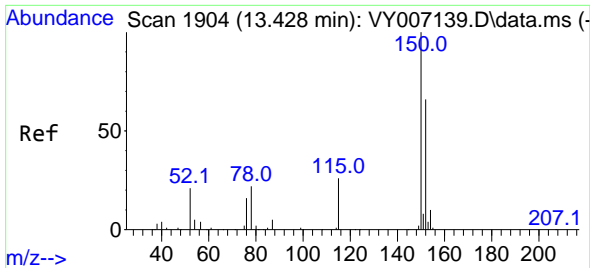


#64
 Tetrachloroethene
 Concen: 4.307 ug/l
 RT: 10.721 min Scan# 1460
 Delta R.T. 0.000 min
 Lab File: VY007165.D
 Acq: 14 Jan 2022 13:47

Tgt Ion:164 Resp: 5928

Ion	Ratio	Lower	Upper
164	100		
166	111.2	102.6	154.0
129	87.1	84.6	127.0
131	86.4	78.7	118.1

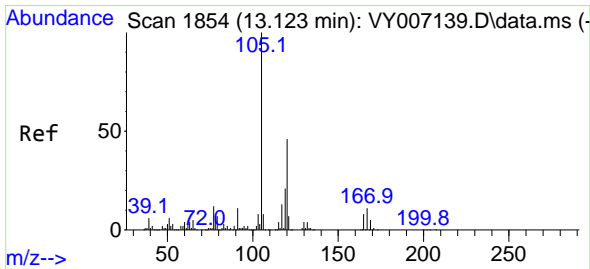
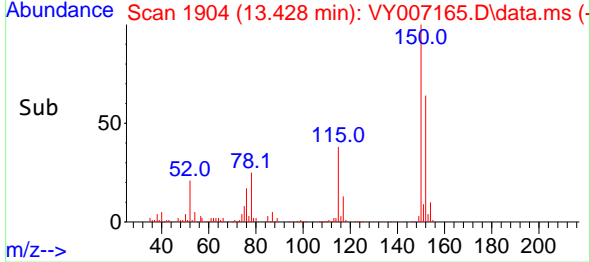
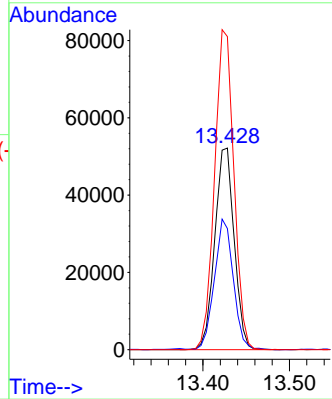
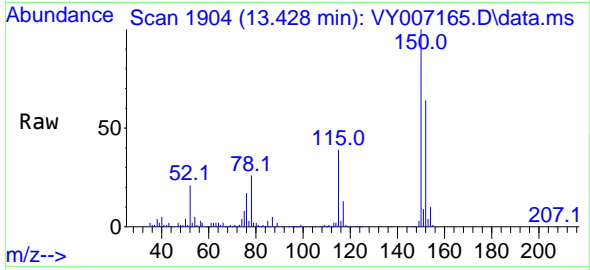




#72
 1,4-Dichlorobenzene-d4
 Concen: 50.000 ug/l
 RT: 13.428 min Scan# 1904
 Delta R.T. 0.000 min
 Lab File: VY007165.D
 Acq: 14 Jan 2022 13:47

Instrument : MSVOA_Y
 ClientSampleId : NORTH-EAST-CORNER-EXCAVATION-EAST-SIDEWALL

Tgt Ion:152 Resp: 81287
 Ion Ratio Lower Upper
 152 100
 115 63.0 31.4 94.0
 150 157.9 0.0 348.4



#84
 1,2,4-Trimethylbenzene
 Concen: 1.078 ug/l
 RT: 13.117 min Scan# 1853
 Delta R.T. -0.006 min
 Lab File: VY007165.D
 Acq: 14 Jan 2022 13:47

Tgt Ion:105 Resp: 6158
 Ion Ratio Lower Upper
 105 100
 120 42.3 21.6 64.6

