

Data Path : Z:\voasrv\HPCHEM1\MSVOA_Y\Data\VY011922\
 Data File : VY007231.D
 Acq On : 19 Jan 2022 19:26
 Operator : SY/MD
 Sample : N1189-15
 Misc : 5.04g/5.0mL/MSVOA_Y/SOIL
 ALS Vial : 17 Sample Multiplier: 1

Instrument :
 MSVOA_Y
ClientSampleId :
 MTR-SOIL-8

Quant Time: Jan 20 00:18:13 2022
 Quant Method : Z:\voasrv\HPCHEM1\MSVOA_Y\methods\82Y011322S.M
 Quant Title : SW846 8260
 QLast Update : Fri Jan 14 05:48:29 2022
 Response via : Initial Calibration

Compound	R.T.	QIon	Response	Conc	Units	Dev(Min)

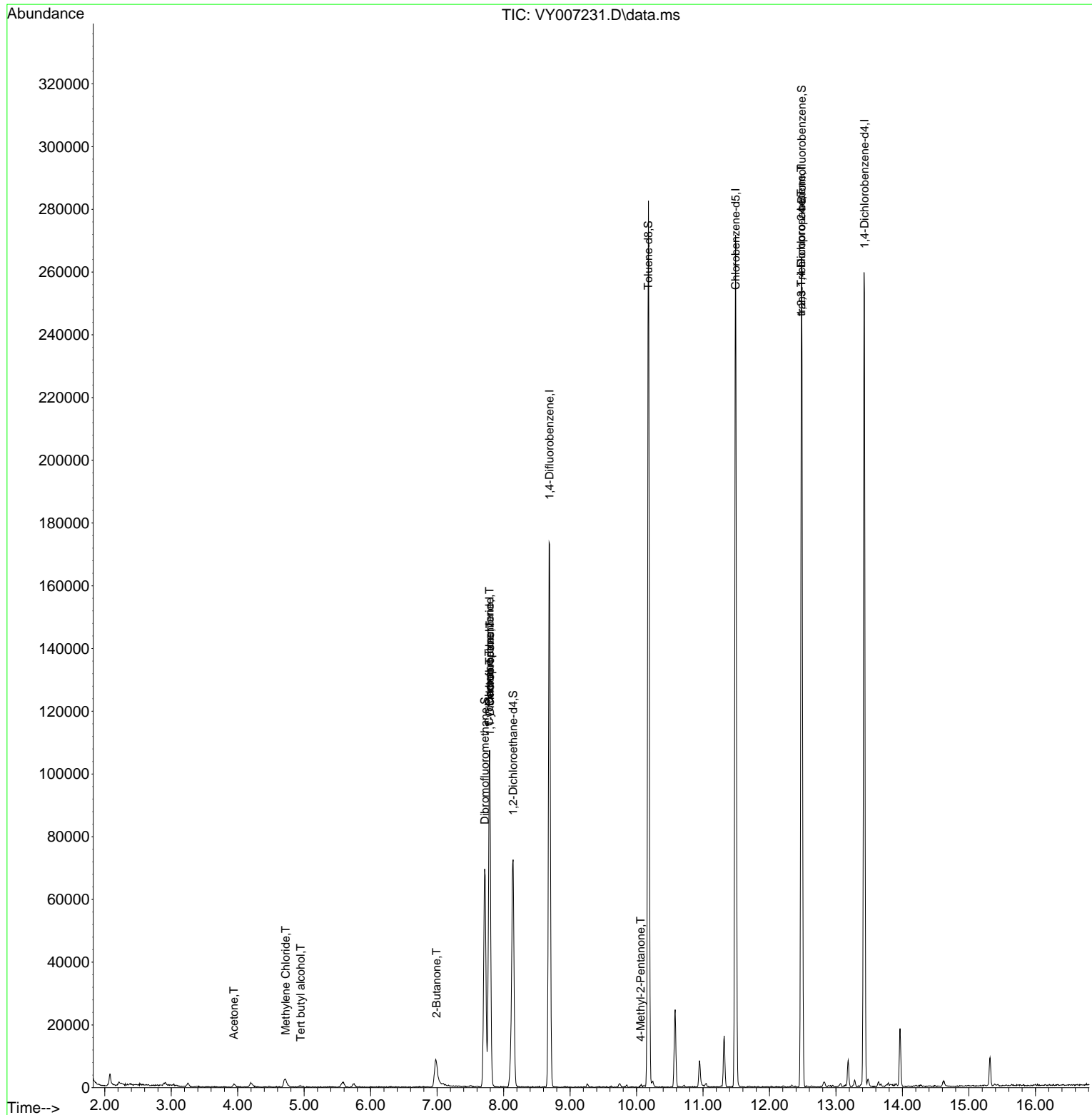
Internal Standards						
1) Pentafluorobenzene	7.789	168	76947	50.000	ug/l	0.00
34) 1,4-Difluorobenzene	8.691	114	146574	50.000	ug/l	0.00
63) Chlorobenzene-d5	11.489	117	142907	50.000	ug/l	0.00
72) 1,4-Dichlorobenzene-d4	13.428	152	62781	50.000	ug/l	0.00
System Monitoring Compounds						
33) 1,2-Dichloroethane-d4	8.143	65	55215	58.481	ug/l	0.00
Spiked Amount	50.000	Range	50 - 163	Recovery	=	116.960%
35) Dibromofluoromethane	7.716	113	49436	49.879	ug/l	0.00
Spiked Amount	50.000	Range	54 - 147	Recovery	=	99.760%
50) Toluene-d8	10.179	98	179578	49.587	ug/l	0.00
Spiked Amount	50.000	Range	49 - 140	Recovery	=	99.180%
62) 4-Bromofluorobenzene	12.483	95	66315	51.478	ug/l	0.00
Spiked Amount	50.000	Range	25 - 144	Recovery	=	102.960%
Target Compounds						
					Qvalue	
11) Tert butyl alcohol	4.948	59	980	7.505	ug/l #	73
16) Acetone	3.942	43	1900	7.754	ug/l	94
20) Methylene Chloride	4.722	84	2141	2.113	ug/l #	84
25) 2-Butanone	6.990	43	1693	5.344	ug/l	98
31) Cyclohexane	7.783	56	1794	1.124	ug/l #	13
36) 1,1-Dichloropropene	7.795	75	7272	4.594	ug/l #	50
38) Carbon Tetrachloride	7.789	117	8903	5.347	ug/l #	15
51) 4-Methyl-2-Pentanone	10.063	43	812	1.013	ug/l #	80
76) 1,2,3-Trichloropropane	12.477	75	37678	52.633	ug/l #	100
81) trans-1,4-Dichloro-2-b...	12.477	75	37678	96.356	ug/l #	3

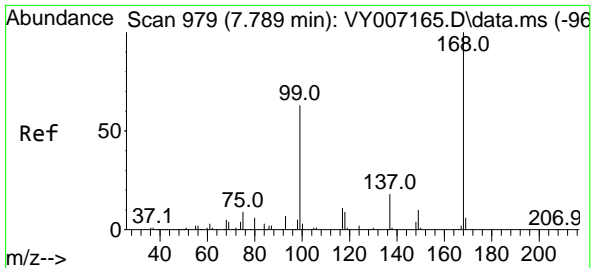
(#) = qualifier out of range (m) = manual integration (+) = signals summed

Data Path : Z:\voasrv\HPCHEM1\MSVOA_Y\Data\VY011922\
 Data File : VY007231.D
 Acq On : 19 Jan 2022 19:26
 Operator : SY/MD
 Sample : N1189-15
 Misc : 5.04g/5.0mL/MSVOA_Y/SOIL
 ALS Vial : 17 Sample Multiplier: 1

Instrument :
 MSVOA_Y
 ClientSampleId :
 MTR-SOIL-8

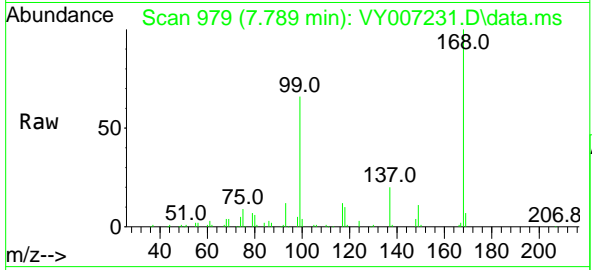
Quant Time: Jan 20 00:18:13 2022
 Quant Method : Z:\voasrv\HPCHEM1\MSVOA_Y\methods\82Y011322S.M
 Quant Title : SW846 8260
 QLast Update : Fri Jan 14 05:48:29 2022
 Response via : Initial Calibration



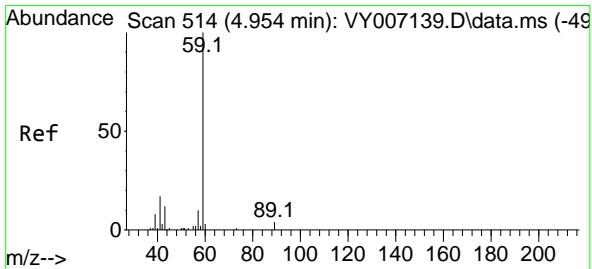
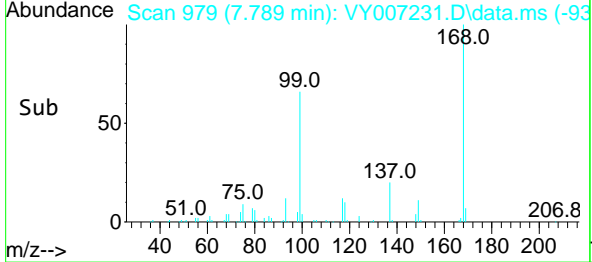
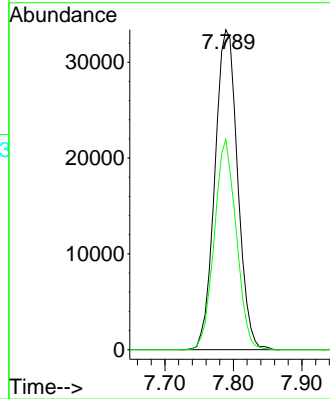


#1
 Pentafluorobenzene
 Concen: 50.000 ug/l
 RT: 7.789 min Scan# 91
 Delta R.T. -0.000 min
 Lab File: VY007231.D
 Acq: 19 Jan 2022 19:26

Instrument :
 MSVOA_Y
 ClientSampleId :
 MTR-SOIL-8

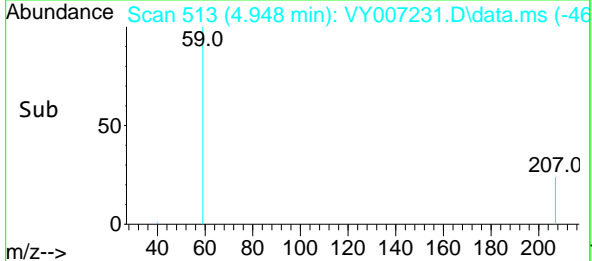
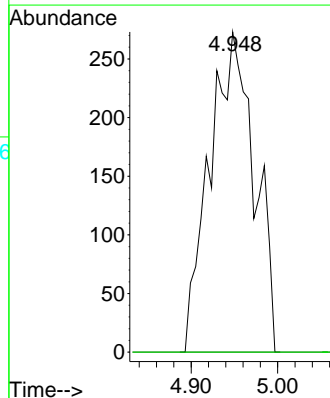
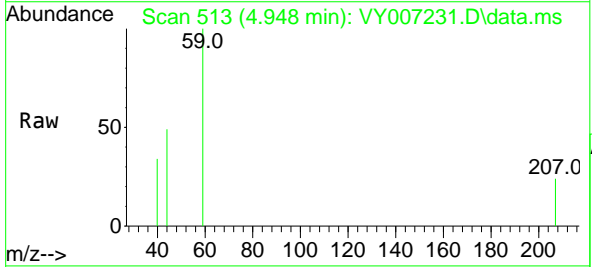


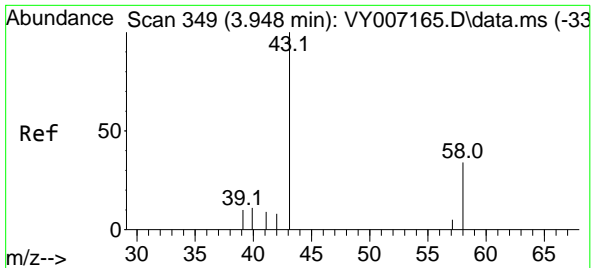
Tgt Ion:168 Resp: 76947
 Ion Ratio Lower Upper
 168 100
 99 65.7 49.1 73.7



#11
 Tert butyl alcohol
 Concen: 7.505 ug/l
 RT: 4.948 min Scan# 513
 Delta R.T. -0.006 min
 Lab File: VY007231.D
 Acq: 19 Jan 2022 19:26

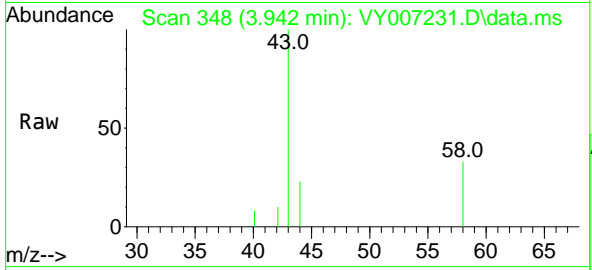
Tgt Ion: 59 Resp: 980
 Ion Ratio Lower Upper
 59 100
 57 0.0 8.1 12.1#



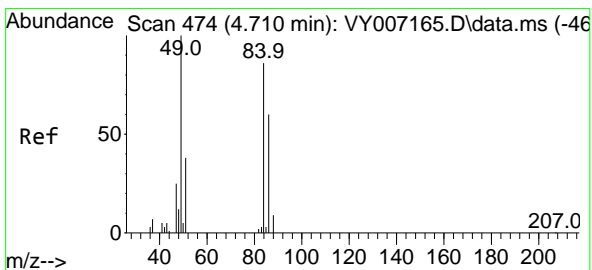
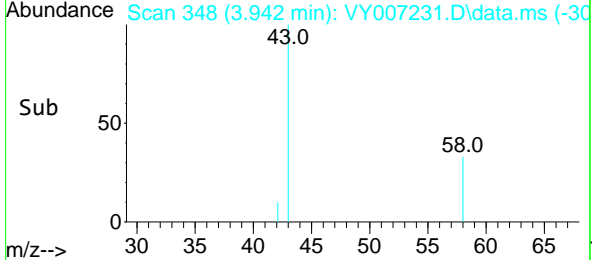
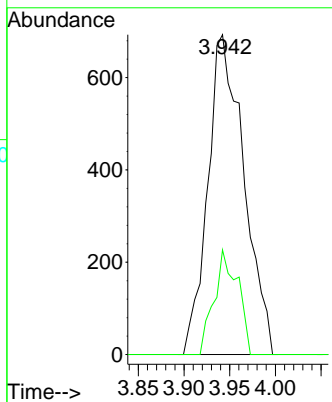


#16
 Acetone
 Concen: 7.754 ug/l
 RT: 3.942 min Scan# 34
 Delta R.T. -0.006 min
 Lab File: VY007231.D
 Acq: 19 Jan 2022 19:26

Instrument :
 MSVOA_Y
 ClientSampleId :
 MTR-SOIL-8

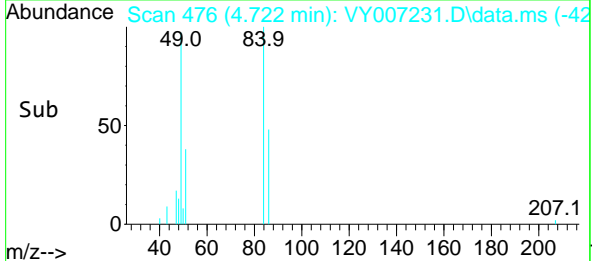
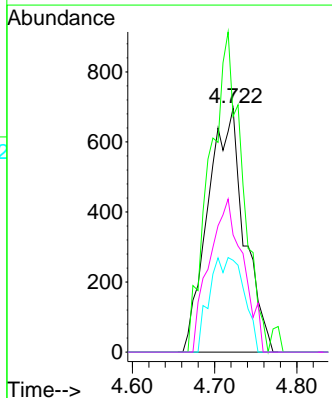
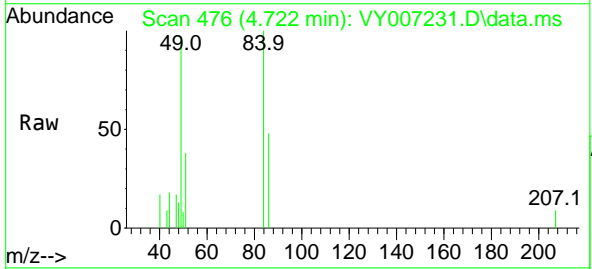


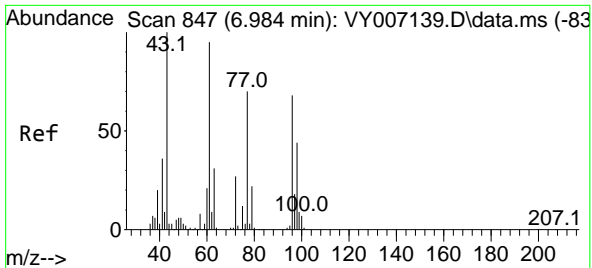
Tgt Ion: 43 Resp: 1900
 Ion Ratio Lower Upper
 43 100
 58 32.8 23.8 35.6



#20
 Methylene Chloride
 Concen: 2.113 ug/l
 RT: 4.722 min Scan# 476
 Delta R.T. 0.013 min
 Lab File: VY007231.D
 Acq: 19 Jan 2022 19:26

Tgt Ion: 84 Resp: 2141
 Ion Ratio Lower Upper
 84 100
 49 96.7 92.6 139.0
 51 37.6 28.6 42.8
 86 48.1 50.1 75.1#

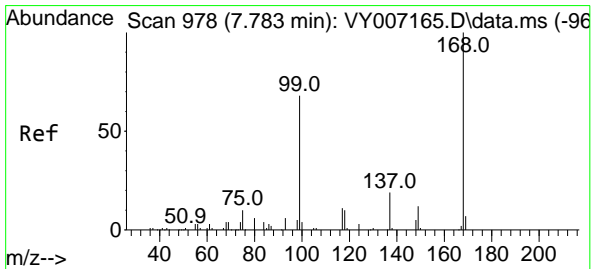
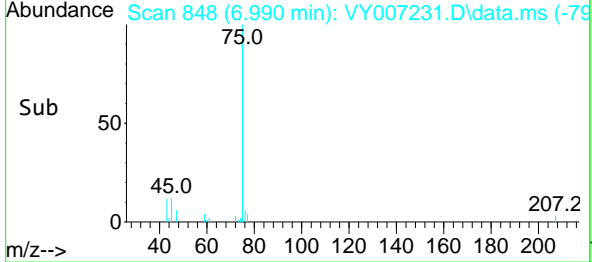
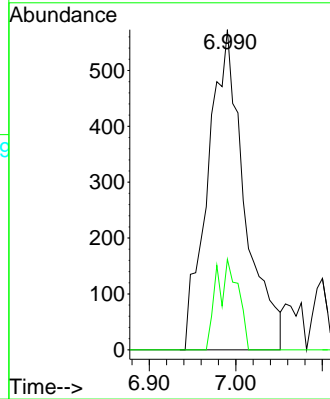
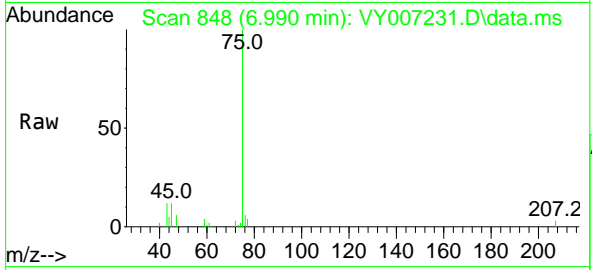




#25
 2-Butanone
 Concen: 5.344 ug/l
 RT: 6.990 min Scan# 84
 Delta R.T. 0.006 min
 Lab File: VY007231.D
 Acq: 19 Jan 2022 19:26

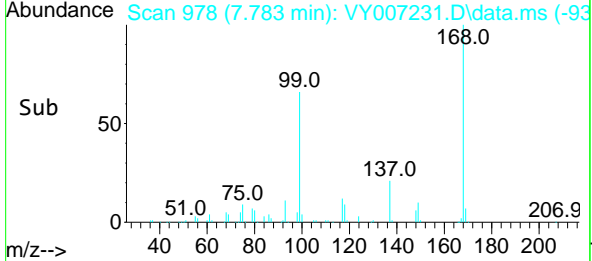
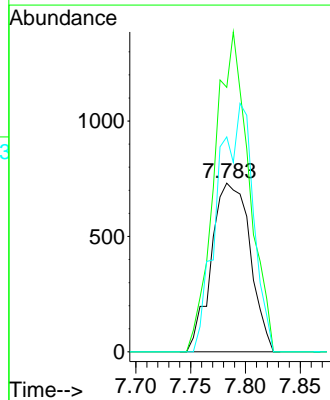
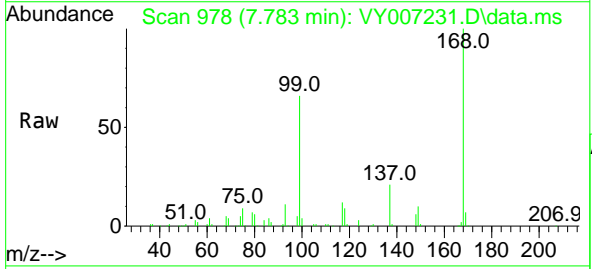
Instrument :
 MSVOA_Y
 ClientSampleId :
 MTR-SOIL-8

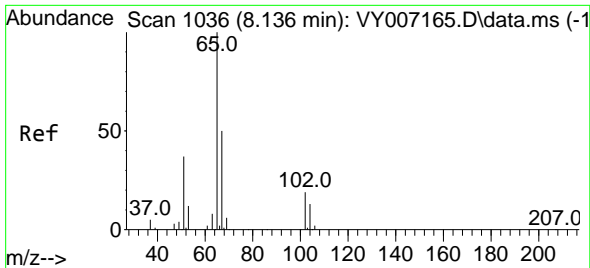
Tgt Ion: 43 Resp: 1693
 Ion Ratio Lower Upper
 43 100
 72 28.3 21.9 32.9



#31
 Cyclohexane
 Concen: 1.124 ug/l
 RT: 7.783 min Scan# 978
 Delta R.T. -0.006 min
 Lab File: VY007231.D
 Acq: 19 Jan 2022 19:26

Tgt Ion: 56 Resp: 1794
 Ion Ratio Lower Upper
 56 100
 69 156.8 27.2 40.8#
 84 127.4 72.1 108.1#

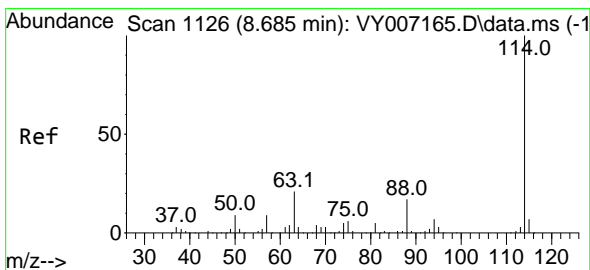
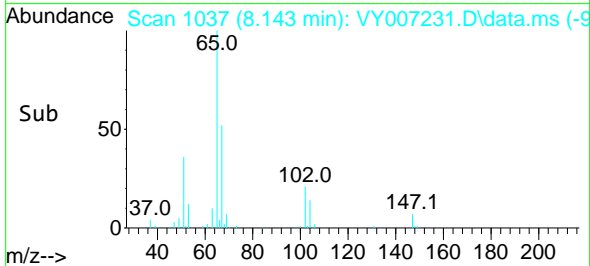
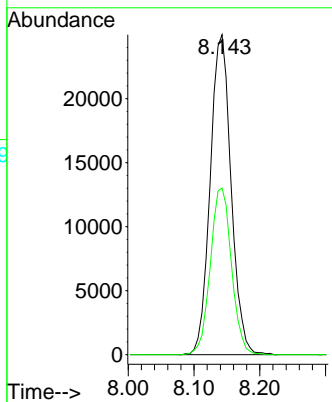
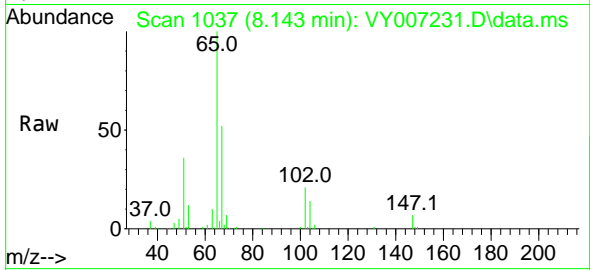




#33
 1,2-Dichloroethane-d4
 Concen: 58.481 ug/l
 RT: 8.143 min Scan# 1037
 Delta R.T. 0.000 min
 Lab File: VY007231.D
 Acq: 19 Jan 2022 19:26

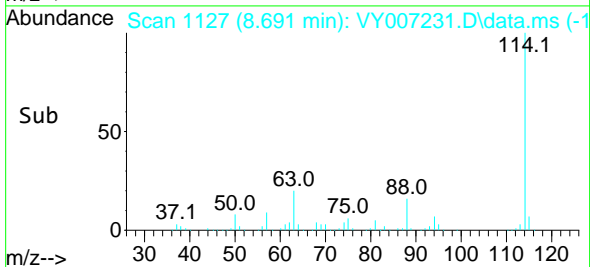
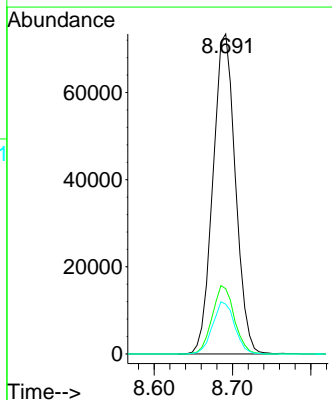
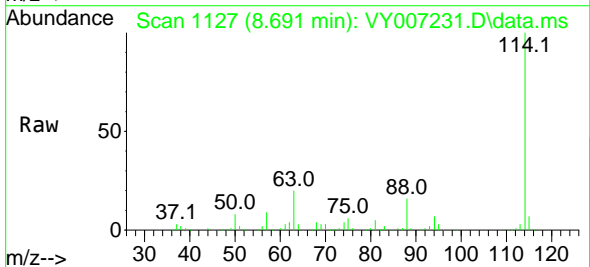
Instrument : MSVOA_Y
 ClientSampleId : MTR-SOIL-8

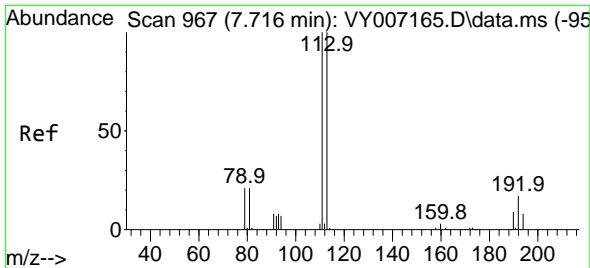
Tgt Ion: 65 Resp: 55215
 Ion Ratio Lower Upper
 65 100
 67 52.6 0.0 105.6



#34
 1,4-Difluorobenzene
 Concen: 50.000 ug/l
 RT: 8.691 min Scan# 1127
 Delta R.T. 0.000 min
 Lab File: VY007231.D
 Acq: 19 Jan 2022 19:26

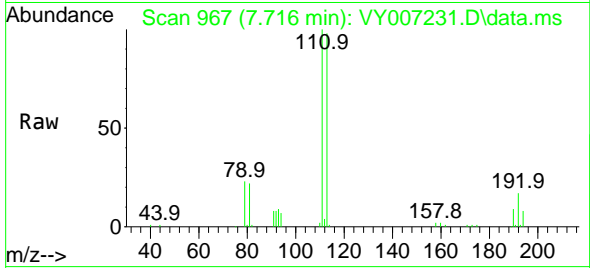
Tgt Ion:114 Resp: 146574
 Ion Ratio Lower Upper
 114 100
 63 20.4 0.0 39.2
 88 15.6 0.0 31.0



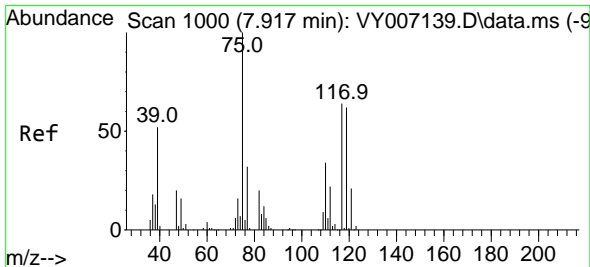
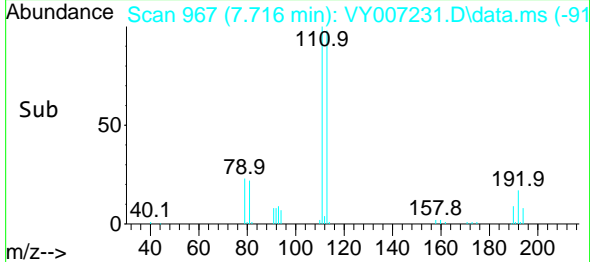
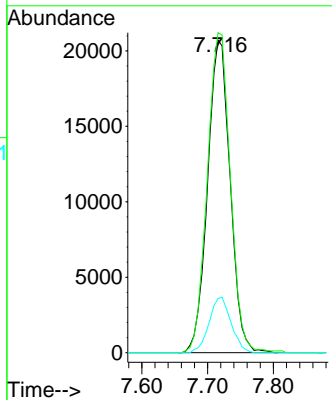


#35
 Dibromofluoromethane
 Concen: 49.879 ug/l
 RT: 7.716 min Scan# 90
 Delta R.T. 0.000 min
 Lab File: VY007231.D
 Acq: 19 Jan 2022 19:26

Instrument :
 MSVOA_Y
 ClientSampleId :
 MTR-SOIL-8

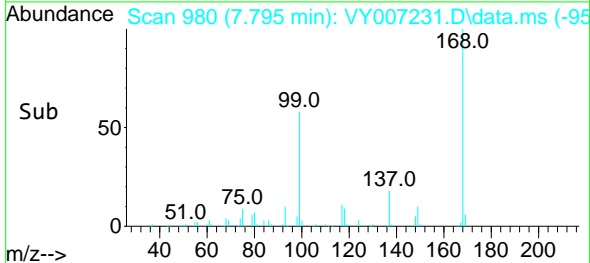
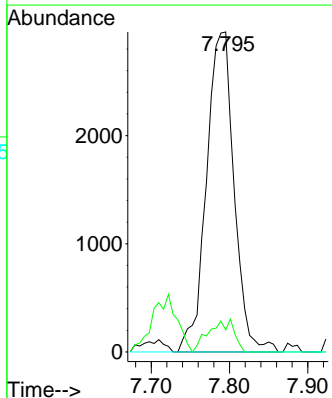
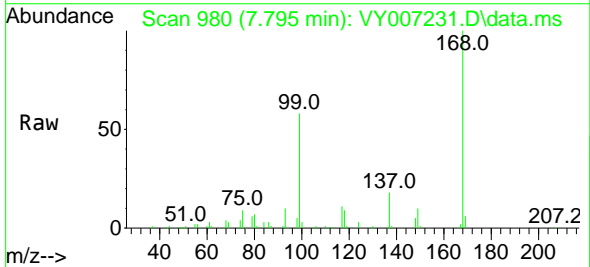


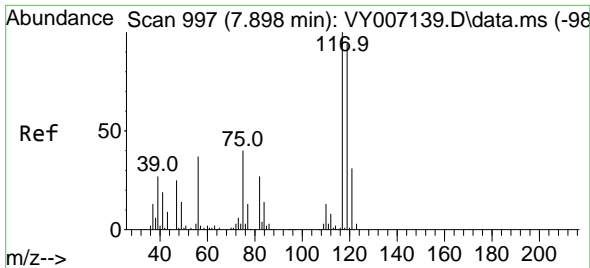
Tgt Ion:113 Resp: 49436
 Ion Ratio Lower Upper
 113 100
 111 104.8 82.2 123.4
 192 17.3 14.2 21.4



#36
 1,1-Dichloropropene
 Concen: 4.594 ug/l
 RT: 7.795 min Scan# 980
 Delta R.T. -0.122 min
 Lab File: VY007231.D
 Acq: 19 Jan 2022 19:26

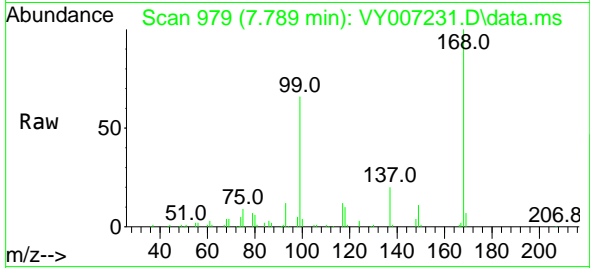
Tgt Ion: 75 Resp: 7272
 Ion Ratio Lower Upper
 75 100
 110 9.1 17.3 51.9#
 77 0.0 24.7 37.1#



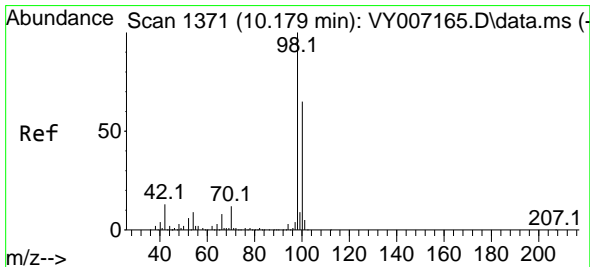
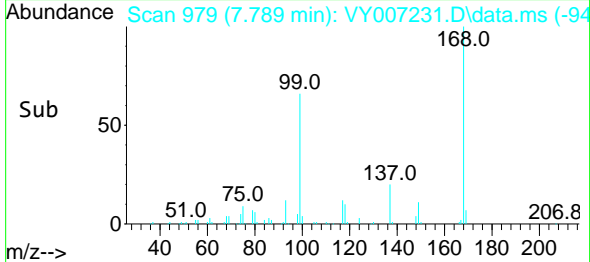
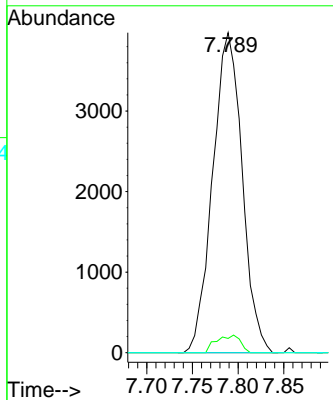


#38
 Carbon Tetrachloride
 Concen: 5.347 ug/l
 RT: 7.789 min Scan# 91
 Delta R.T. -0.109 min
 Lab File: VY007231.D
 Acq: 19 Jan 2022 19:26

Instrument : MSVOA_Y
 ClientSampleId : MTR-SOIL-8

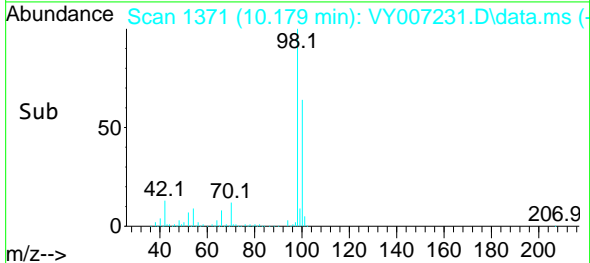
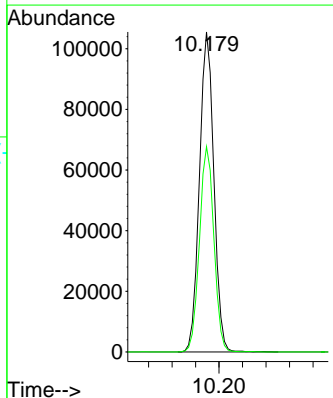
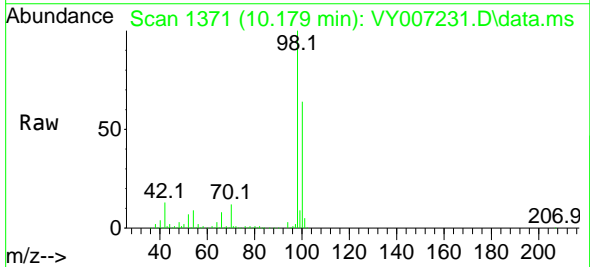


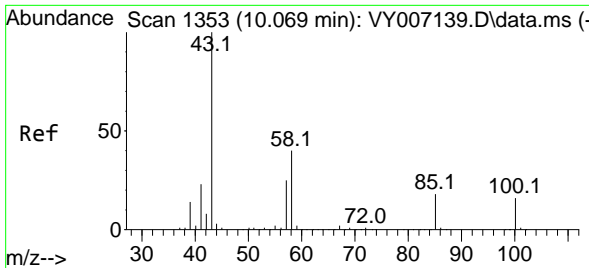
Tgt Ion: 117 Resp: 8903
 Ion Ratio Lower Upper
 117 100
 119 4.5 77.2 115.8#
 121 0.0 24.2 36.2#



#50
 Toluene-d8
 Concen: 49.587 ug/l
 RT: 10.179 min Scan# 1371
 Delta R.T. 0.000 min
 Lab File: VY007231.D
 Acq: 19 Jan 2022 19:26

Tgt Ion: 98 Resp: 179578
 Ion Ratio Lower Upper
 98 100
 100 64.4 52.2 78.2

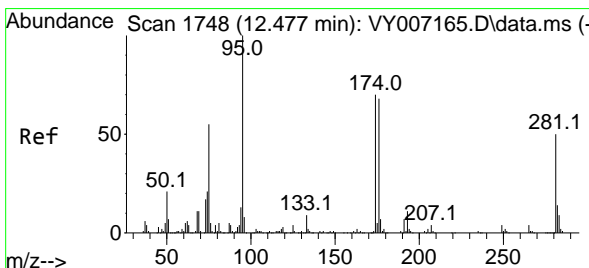
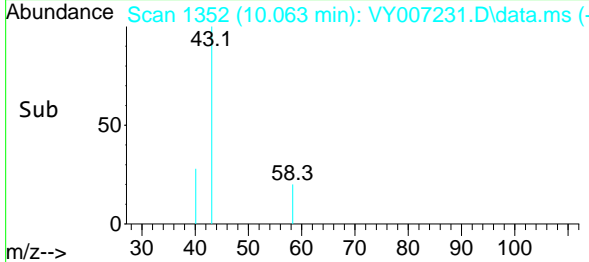
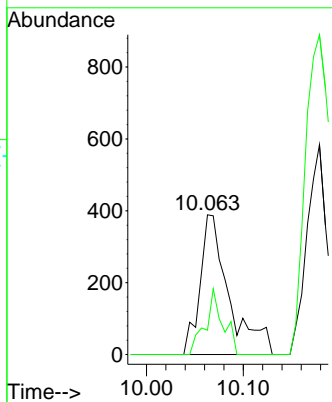
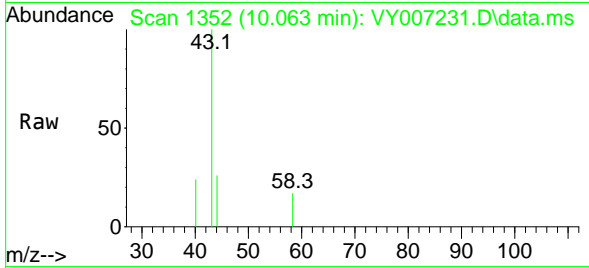




#51
 4-Methyl-2-Pentanone
 Concen: 1.013 ug/l
 RT: 10.063 min Scan# 11
 Delta R.T. -0.006 min
 Lab File: VY007231.D
 Acq: 19 Jan 2022 19:26

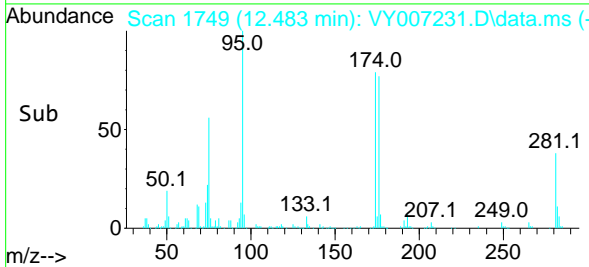
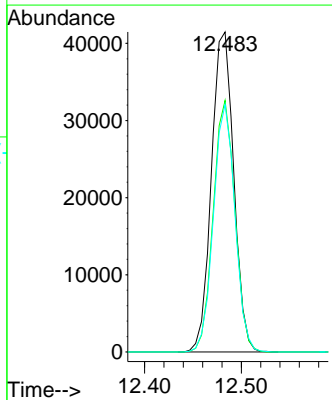
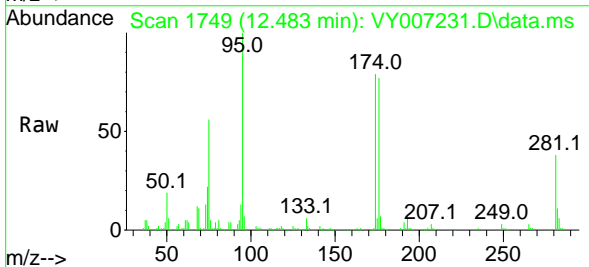
Instrument :
 MSVOA_Y
 ClientSampleId :
 MTR-SOIL-8

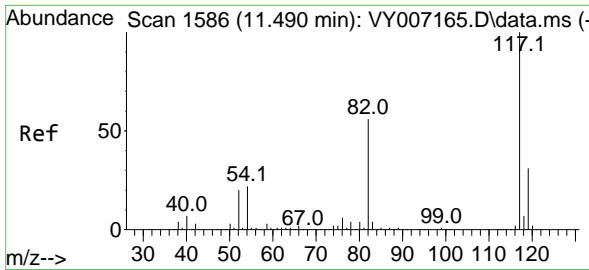
Tgt Ion: 43 Resp: 812
 Ion Ratio Lower Upper
 43 100
 58 28.6 32.8 49.2#



#62
 4-Bromofluorobenzene
 Concen: 51.478 ug/l
 RT: 12.483 min Scan# 1749
 Delta R.T. 0.000 min
 Lab File: VY007231.D
 Acq: 19 Jan 2022 19:26

Tgt Ion: 95 Resp: 66315
 Ion Ratio Lower Upper
 95 100
 174 76.4 0.0 148.4
 176 74.6 0.0 146.6



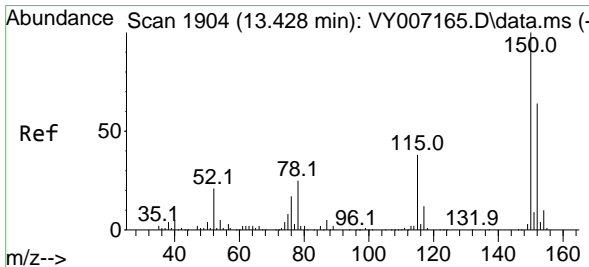
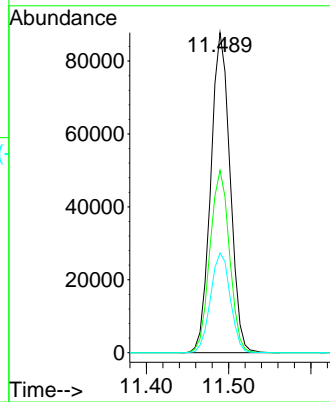
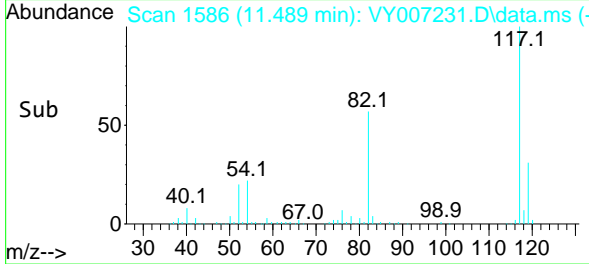
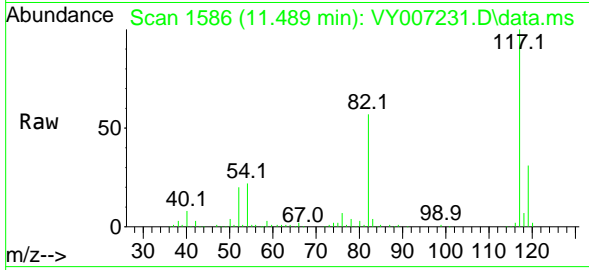


#63
 Chlorobenzene-d5
 Concen: 50.000 ug/l
 RT: 11.489 min Scan# 117
 Delta R.T. 0.000 min
 Lab File: VY007231.D
 Acq: 19 Jan 2022 19:26

Instrument :
 MSVOA_Y
 ClientSampleId :
 MTR-SOIL-8

Tgt Ion:117 Resp: 142907

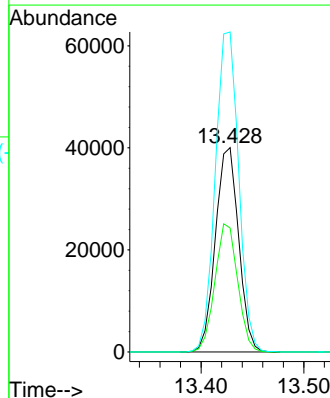
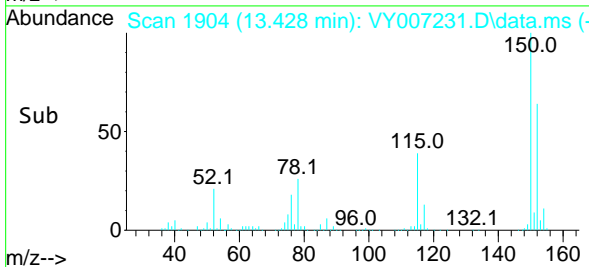
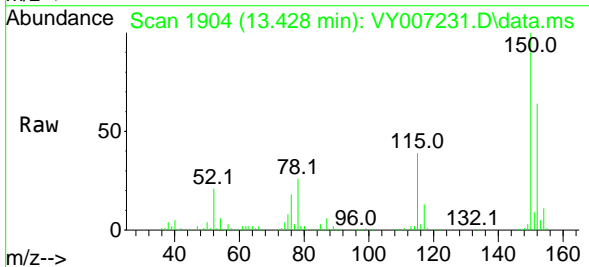
Ion	Ratio	Lower	Upper
117	100		
82	56.9	45.4	68.0
119	31.1	26.4	39.6

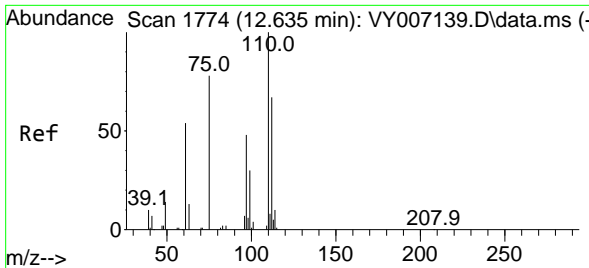


#72
 1,4-Dichlorobenzene-d4
 Concen: 50.000 ug/l
 RT: 13.428 min Scan# 1904
 Delta R.T. 0.000 min
 Lab File: VY007231.D
 Acq: 19 Jan 2022 19:26

Tgt Ion:152 Resp: 62781

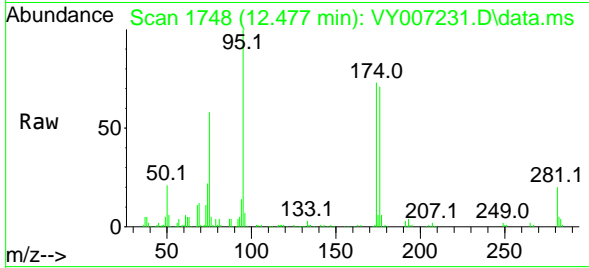
Ion	Ratio	Lower	Upper
152	100		
115	61.5	31.4	94.0
150	157.6	0.0	348.4



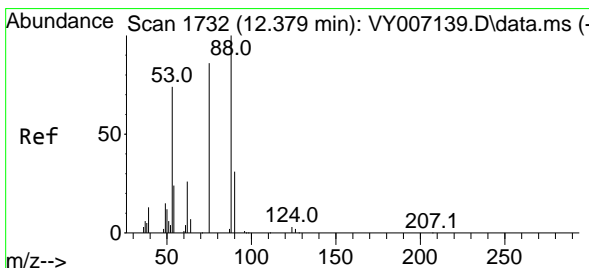
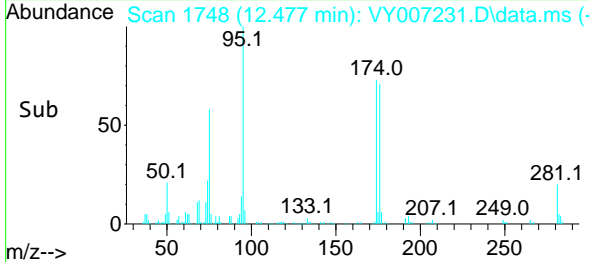
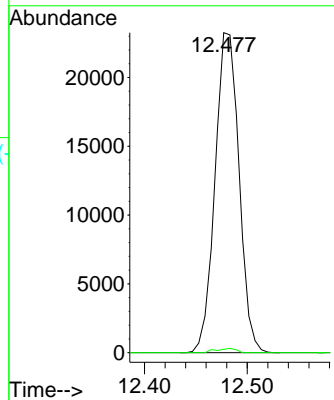


#76
 1,2,3-Trichloropropane
 Concen: 52.633 ug/l
 RT: 12.477 min Scan# 1748
 Delta R.T. -0.158 min
 Lab File: VY007231.D
 Acq: 19 Jan 2022 19:26

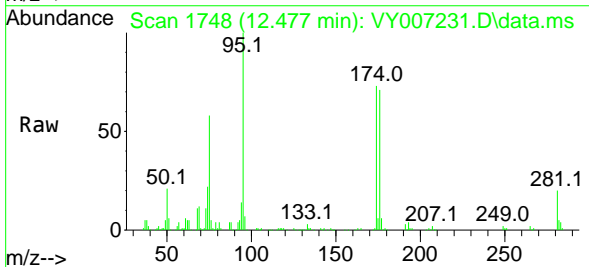
Instrument : MSVOA_Y
 ClientSampleId : MTR-SOIL-8



Tgt Ion: 75 Resp: 37678
 Ion Ratio Lower Upper
 75 100
 77 1.1 0.0 0.0#



#81
 trans-1,4-Dichloro-2-butene
 Concen: 96.356 ug/l
 RT: 12.477 min Scan# 1748
 Delta R.T. 0.098 min
 Lab File: VY007231.D
 Acq: 19 Jan 2022 19:26



Tgt Ion: 75 Resp: 37678
 Ion Ratio Lower Upper
 75 100
 53 0.0 73.9 110.9#
 89 0.7 0.0 0.0#

