

Data Path : Z:\voasrv\HPCHEM1\MSVOA_Y\Data\VY012122\
 Data File : VY007259.D
 Acq On : 21 Jan 2022 17:39
 Operator : SY/MD
 Sample : N1233-01
 Misc : 5.00g/5.0mL/MSVOA_Y/SOIL
 ALS Vial : 13 Sample Multiplier: 1

Instrument :
 MSVOA_Y
 ClientSampleId :

Quant Time: Jan 22 00:24:41 2022
 Quant Method : Z:\voasrv\HPCHEM1\MSVOA_Y\methods\82Y011322S.M
 Quant Title : SW846 8260
 QLast Update : Fri Jan 14 05:48:29 2022
 Response via : Initial Calibration

Compound	R.T.	QIon	Response	Conc	Units	Dev(Min)

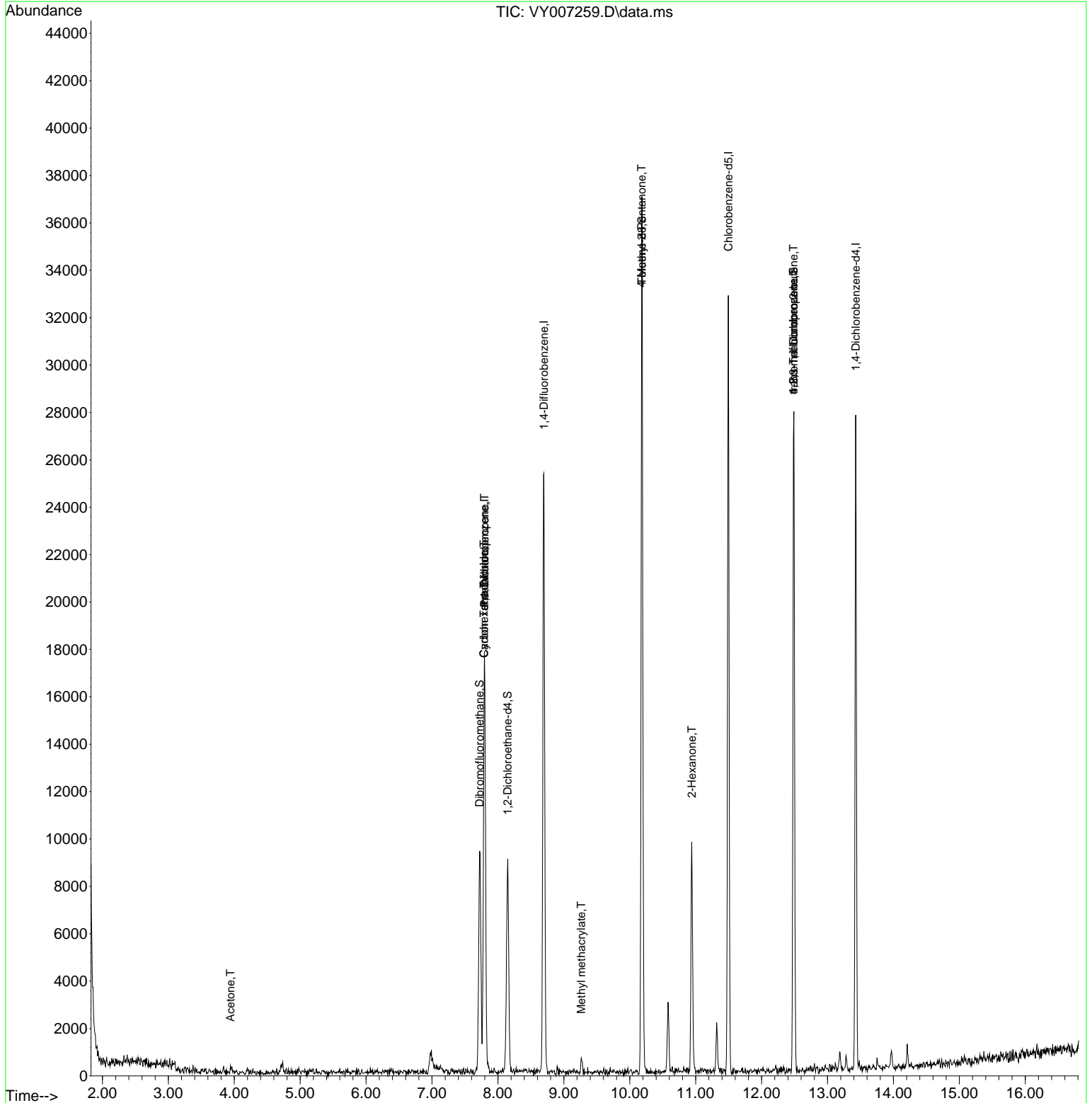
Internal Standards						
1) Pentafluorobenzene	7.795	168	13219	50.000	ug/l	0.00
34) 1,4-Difluorobenzene	8.697	114	21111	50.000	ug/l	0.00
63) Chlorobenzene-d5	11.496	117	17259	50.000	ug/l	0.00
72) 1,4-Dichlorobenzene-d4	13.428	152	6311	50.000	ug/l	0.00
System Monitoring Compounds						
33) 1,2-Dichloroethane-d4	8.149	65	6971	42.978	ug/l	0.00
Spiked Amount	50.000	Range	50 - 163	Recovery	=	85.960%
35) Dibromofluoromethane	7.722	113	6828	47.832	ug/l	0.00
Spiked Amount	50.000	Range	54 - 147	Recovery	=	95.660%
50) Toluene-d8	10.185	98	24065	46.137	ug/l	0.00
Spiked Amount	50.000	Range	49 - 140	Recovery	=	92.280%
62) 4-Bromofluorobenzene	12.483	95	6904	37.210	ug/l	0.00
Spiked Amount	50.000	Range	25 - 144	Recovery	=	74.420%
Target Compounds						
					Qvalue	
16) Acetone	3.942	43	183	4.347	ug/l #	45
31) Cyclohexane	7.789	56	285	1.039	ug/l #	29
36) 1,1-Dichloropropene	7.795	75	1104	4.842	ug/l #	42
38) Carbon Tetrachloride	7.789	117	1654	6.897	ug/l #	12
48) Methyl methacrylate	9.264	41	182	1.758	ug/l #	13
51) 4-Methyl-2-Pentanone	10.179	43	116	1.005	ug/l #	1
59) 2-Hexanone	10.941	43	1730	22.083	ug/l #	37
76) 1,2,3-Trichloropropane	12.483	75	3988	55.418	ug/l #	100
81) trans-1,4-Dichloro-2-b...	12.483	75	3988	101.455	ug/l #	3

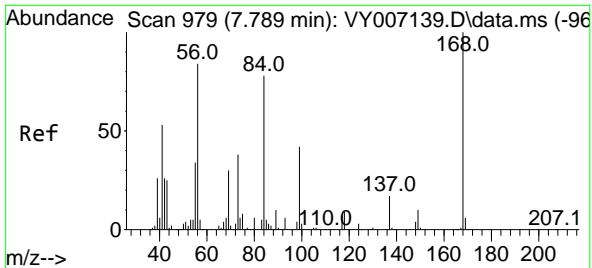
(#) = qualifier out of range (m) = manual integration (+) = signals summed

Data Path : Z:\voasrv\HPCHEM1\MSVOA_Y\Data\VY012122\
 Data File : VY007259.D
 Acq On : 21 Jan 2022 17:39
 Operator : SY/MD
 Sample : N1233-01
 Misc : 5.00g/5.0mL/MSVOA_Y/SOIL
 ALS Vial : 13 Sample Multiplier: 1

Instrument :
 MSVOA_Y
 ClientSampleId :

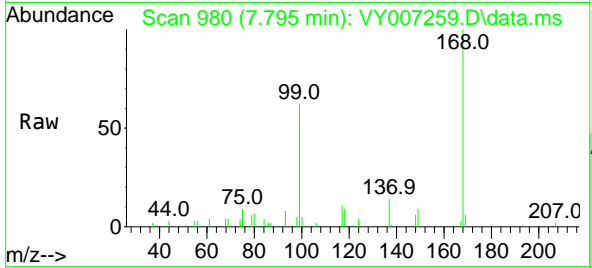
Quant Time: Jan 22 00:24:41 2022
 Quant Method : Z:\voasrv\HPCHEM1\MSVOA_Y\methods\82Y011322S.M
 Quant Title : SW846 8260
 QLast Update : Fri Jan 14 05:48:29 2022
 Response via : Initial Calibration



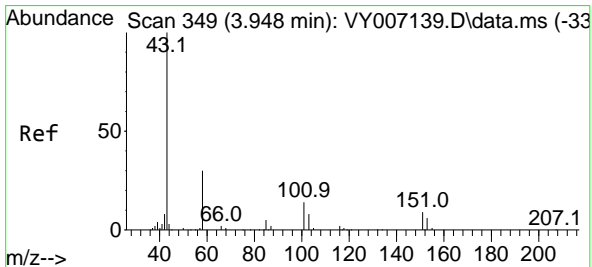
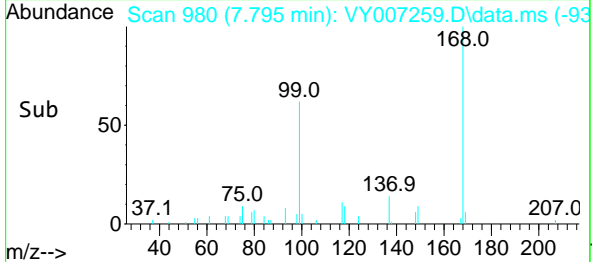
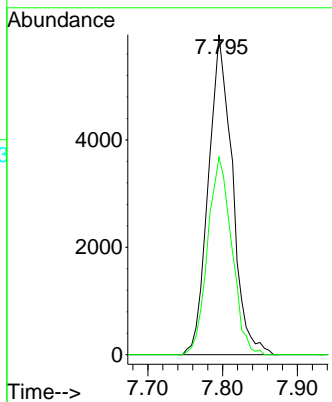


#1
 Pentafluorobenzene
 Concen: 50.000 ug/l
 RT: 7.795 min Scan# 91
 Delta R.T. 0.006 min
 Lab File: VY007259.D
 Acq: 21 Jan 2022 17:39

Instrument :
 MSVOA_Y
 ClientSampleId :

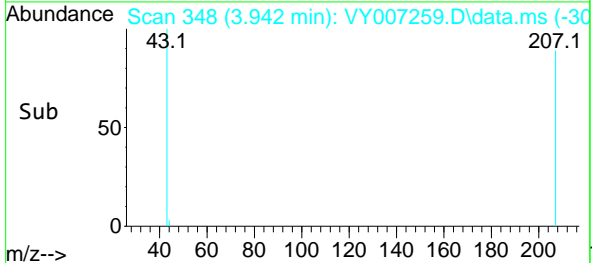
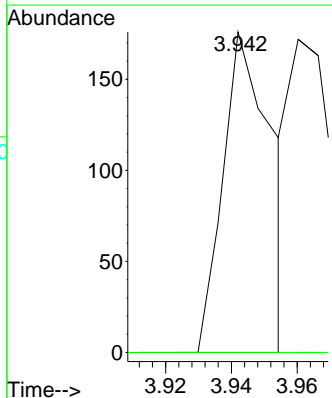
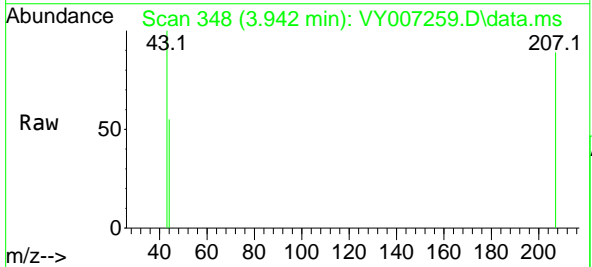


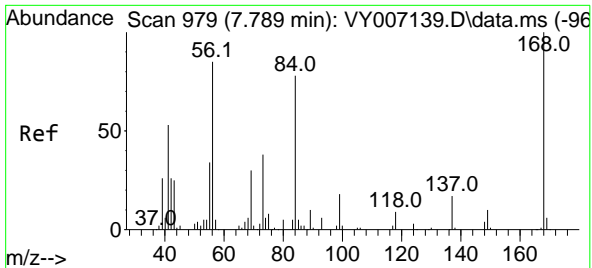
Tgt Ion:168 Resp: 13219
 Ion Ratio Lower Upper
 168 100
 99 61.7 49.1 73.7



#16
 Acetone
 Concen: 4.347 ug/l
 RT: 3.942 min Scan# 348
 Delta R.T. -0.006 min
 Lab File: VY007259.D
 Acq: 21 Jan 2022 17:39

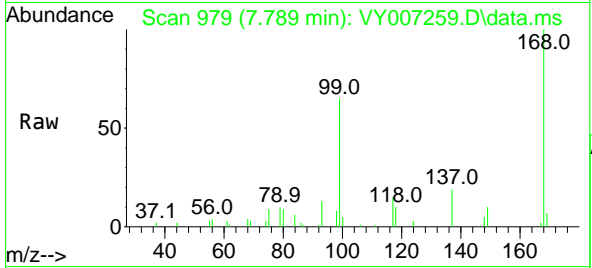
Tgt Ion: 43 Resp: 183
 Ion Ratio Lower Upper
 43 100
 58 0.0 23.8 35.6#



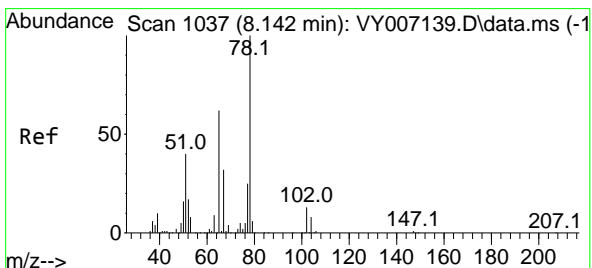
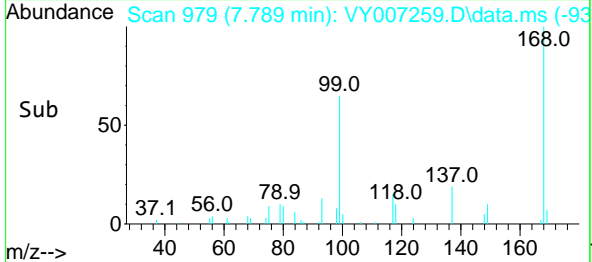
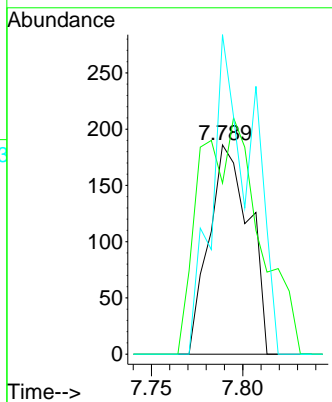


#31
 Cyclohexane
 Concen: 1.039 ug/l
 RT: 7.789 min Scan# 91
 Delta R.T. 0.000 min
 Lab File: VY007259.D
 Acq: 21 Jan 2022 17:39

Instrument :
 MSVOA_Y
 ClientSampleId :

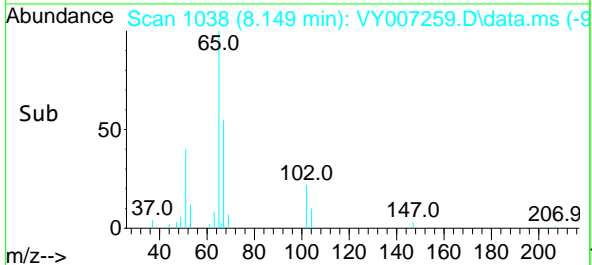
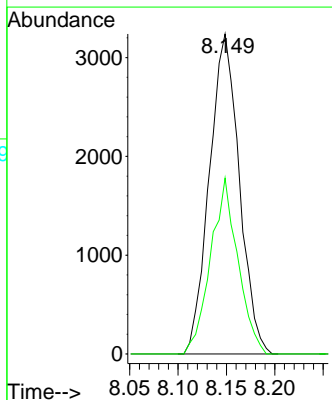
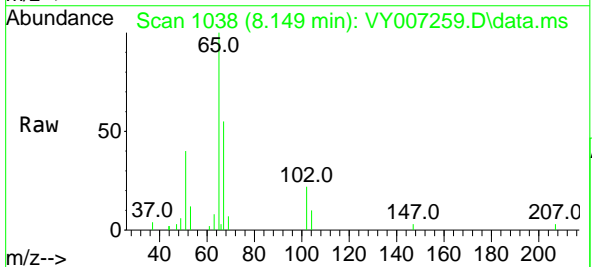


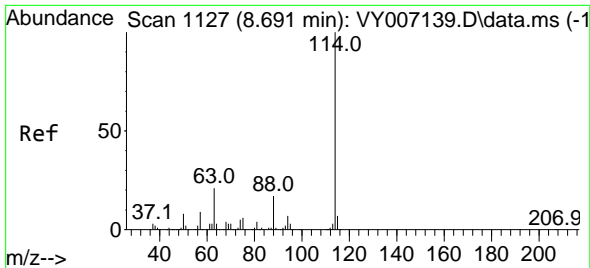
Tgt Ion: 56 Resp: 285
 Ion Ratio Lower Upper
 56 100
 69 81.7 27.2 40.8#
 84 152.7 72.1 108.1#



#33
 1,2-Dichloroethane-d4
 Concen: 42.978 ug/l
 RT: 8.149 min Scan# 1038
 Delta R.T. 0.006 min
 Lab File: VY007259.D
 Acq: 21 Jan 2022 17:39

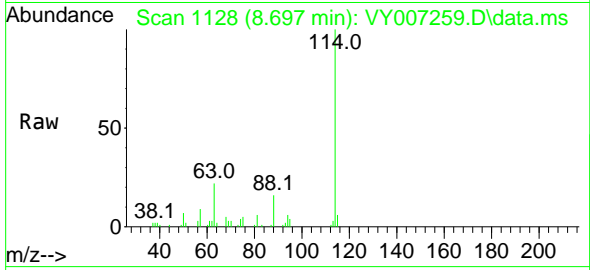
Tgt Ion: 65 Resp: 6971
 Ion Ratio Lower Upper
 65 100
 67 50.2 0.0 105.6



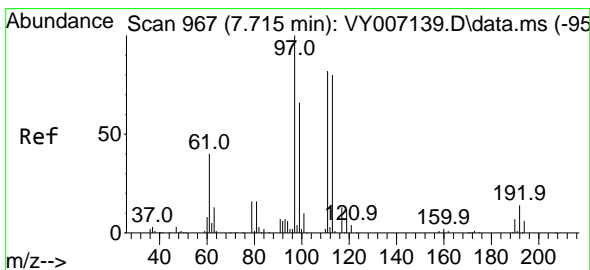
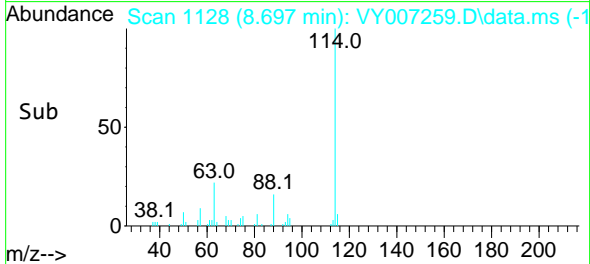
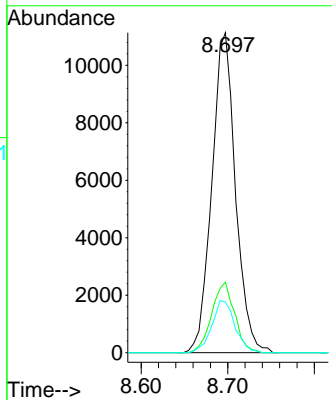


#34
 1,4-Difluorobenzene
 Concen: 50.000 ug/l
 RT: 8.697 min Scan# 1128
 Delta R.T. 0.006 min
 Lab File: VY007259.D
 Acq: 21 Jan 2022 17:39

Instrument :
 MSVOA_Y
 ClientSampleId :

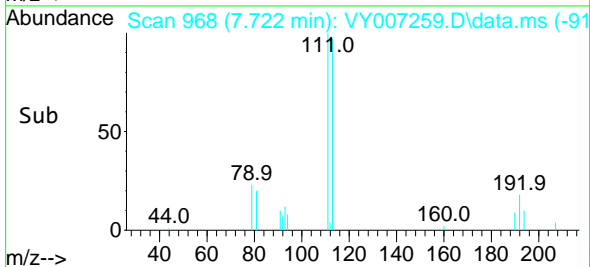
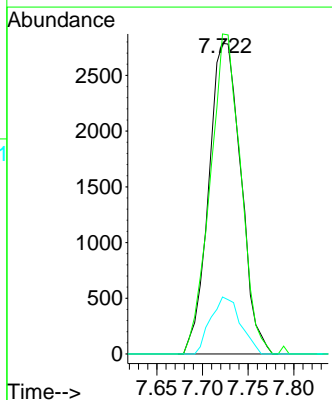
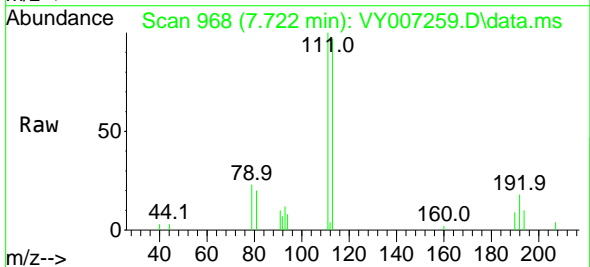


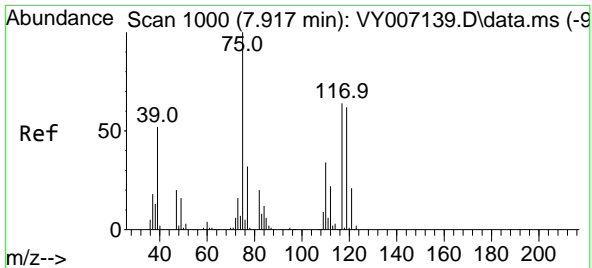
Tgt Ion	Resp	Lower	Upper
114	100		
63	22.1	0.0	39.2
88	15.9	0.0	31.0



#35
 Dibromofluoromethane
 Concen: 47.832 ug/l
 RT: 7.722 min Scan# 968
 Delta R.T. 0.006 min
 Lab File: VY007259.D
 Acq: 21 Jan 2022 17:39

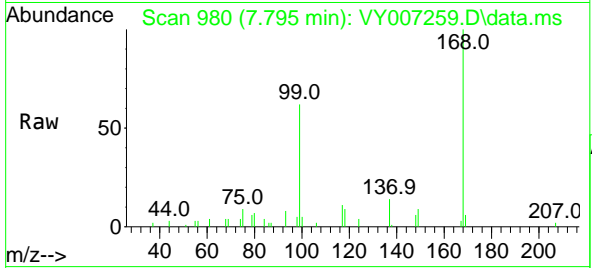
Tgt Ion	Resp	Lower	Upper
113	100		
111	98.2	82.2	123.4
192	17.1	14.2	21.4



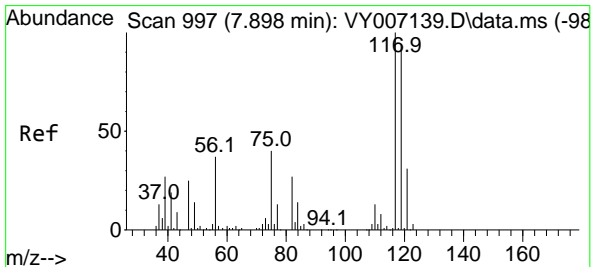
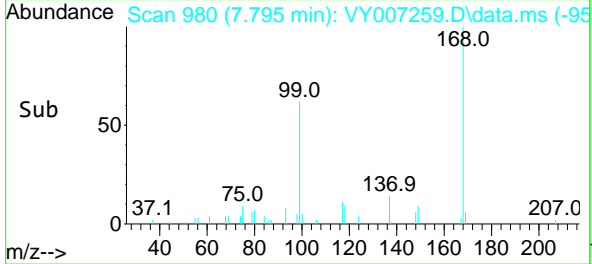
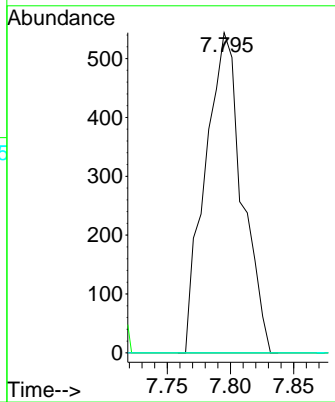


#36
 1,1-Dichloropropene
 Concen: 4.842 ug/l
 RT: 7.795 min Scan# 911
 Delta R.T. -0.122 min
 Lab File: VY007259.D
 Acq: 21 Jan 2022 17:39

Instrument : MSVOA_Y
 ClientSampleId :

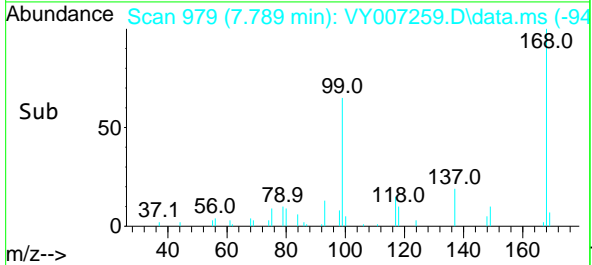
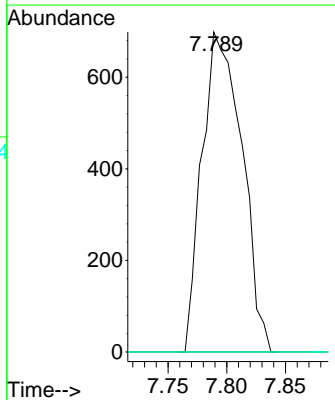
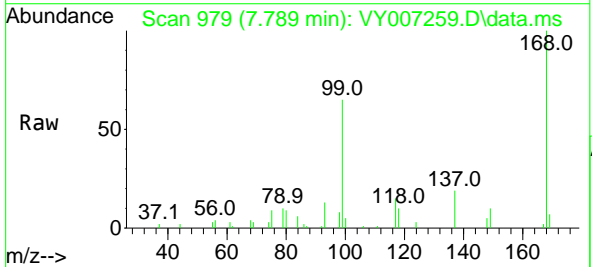


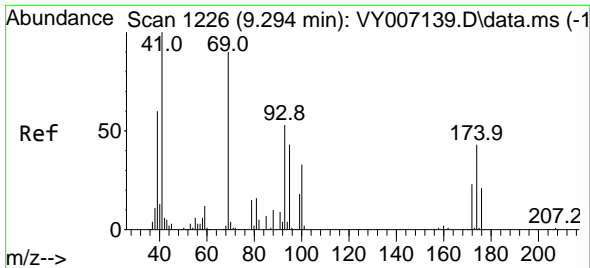
Tgt Ion	Resp	Lower	Upper
75	100		
110	0.0	17.3	51.9#
77	0.0	24.7	37.1#



#38
 Carbon Tetrachloride
 Concen: 6.897 ug/l
 RT: 7.789 min Scan# 979
 Delta R.T. -0.109 min
 Lab File: VY007259.D
 Acq: 21 Jan 2022 17:39

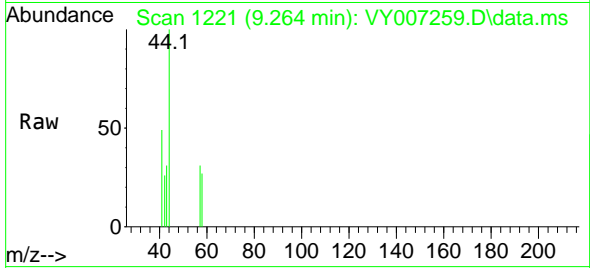
Tgt Ion	Resp	Lower	Upper
117	100		
119	0.0	77.2	115.8#
121	0.0	24.2	36.2#



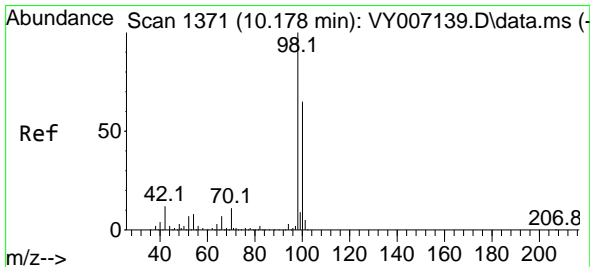
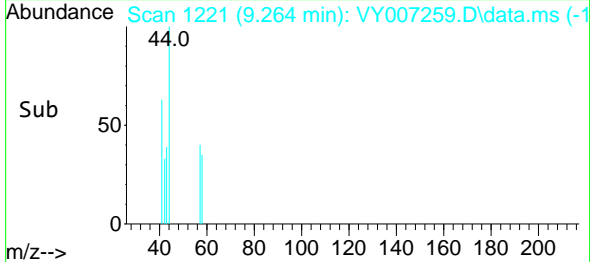
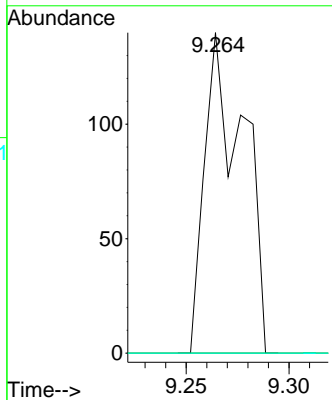


#48
 Methyl methacrylate
 Concen: 1.758 ug/l
 RT: 9.264 min Scan# 11
 Delta R.T. -0.030 min
 Lab File: VY007259.D
 Acq: 21 Jan 2022 17:39

Instrument :
 MSVOA_Y
 ClientSampled :

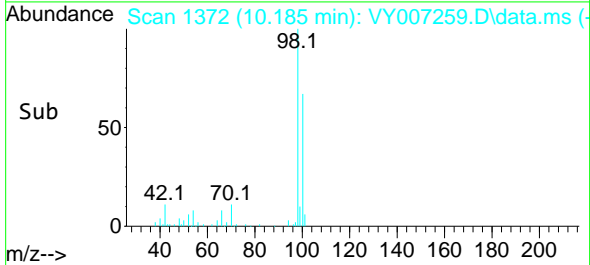
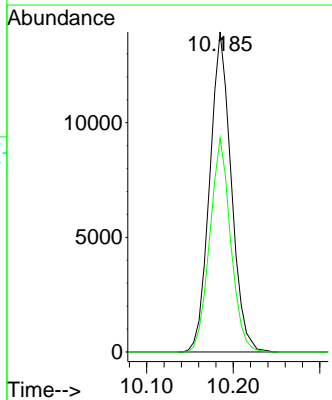
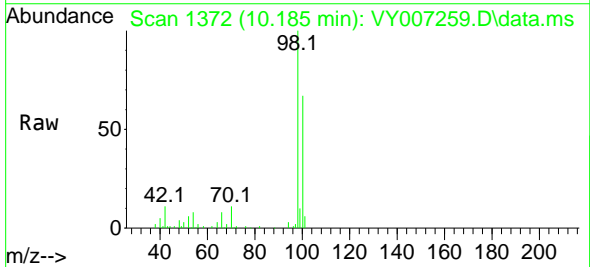


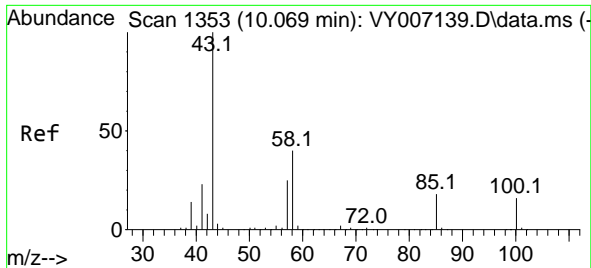
Tgt Ion: 41 Resp: 182
 Ion Ratio Lower Upper
 41 100
 69 0.0 70.5 105.7#
 39 0.0 43.8 65.8#



#50
 Toluene-d8
 Concen: 46.137 ug/l
 RT: 10.185 min Scan# 1372
 Delta R.T. 0.006 min
 Lab File: VY007259.D
 Acq: 21 Jan 2022 17:39

Tgt Ion: 98 Resp: 24065
 Ion Ratio Lower Upper
 98 100
 100 64.7 52.2 78.2

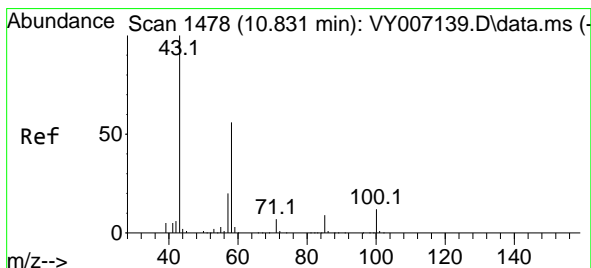
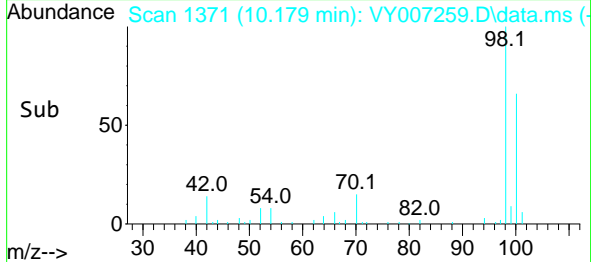
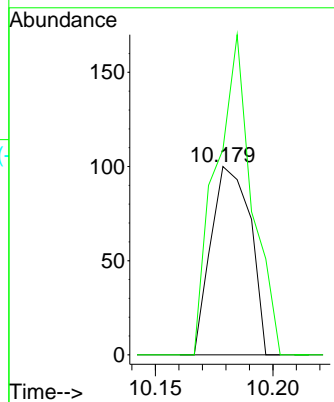
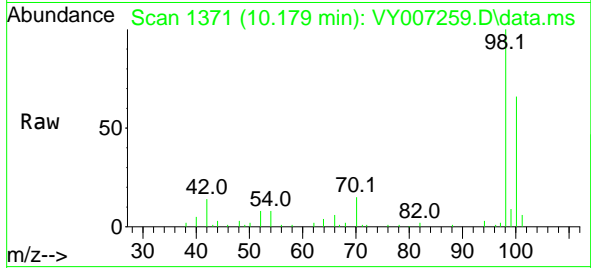




#51
 4-Methyl-2-Pentanone
 Concen: 1.005 ug/l
 RT: 10.179 min Scan# 111
 Delta R.T. 0.110 min
 Lab File: VY007259.D
 Acq: 21 Jan 2022 17:39

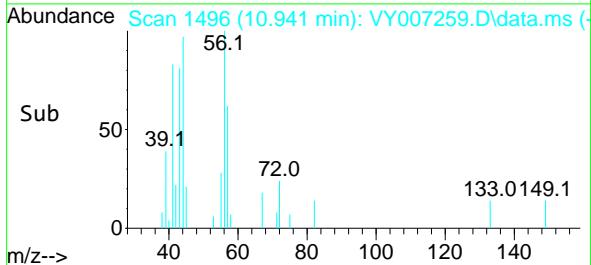
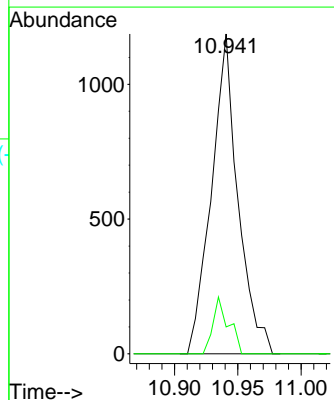
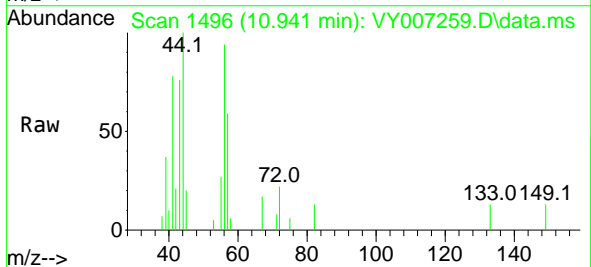
Instrument :
 MSVOA_Y
 ClientSampleId :

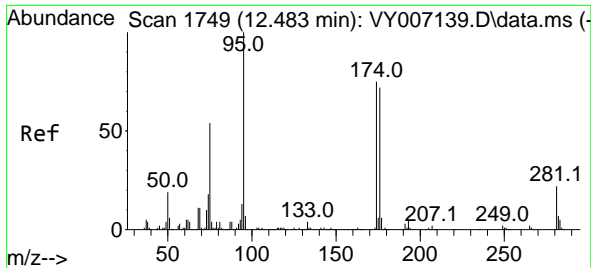
Tgt Ion: 43 Resp: 116
 Ion Ratio Lower Upper
 43 100
 58 156.0 32.8 49.2#



#59
 2-Hexanone
 Concen: 22.083 ug/l
 RT: 10.941 min Scan# 1496
 Delta R.T. 0.110 min
 Lab File: VY007259.D
 Acq: 21 Jan 2022 17:39

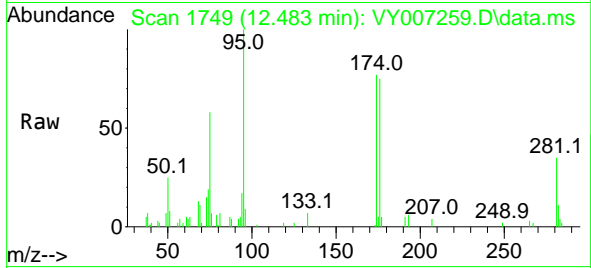
Tgt Ion: 43 Resp: 1730
 Ion Ratio Lower Upper
 43 100
 58 10.5 28.4 85.3#





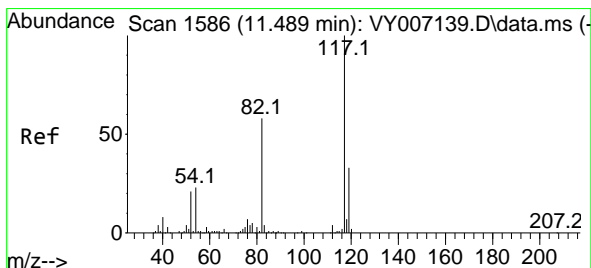
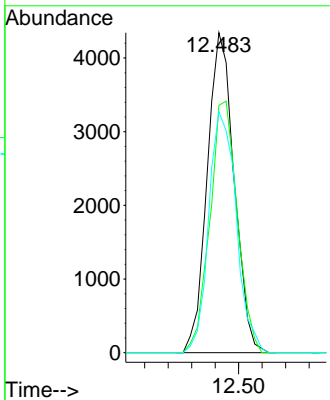
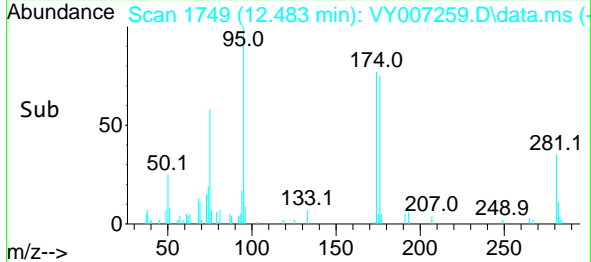
#62
 4-Bromofluorobenzene
 Concen: 37.210 ug/l
 RT: 12.483 min Scan# 1
 Delta R.T. 0.000 min
 Lab File: VY007259.D
 Acq: 21 Jan 2022 17:39

Instrument :
 MSVOA_Y
 ClientSampleId :

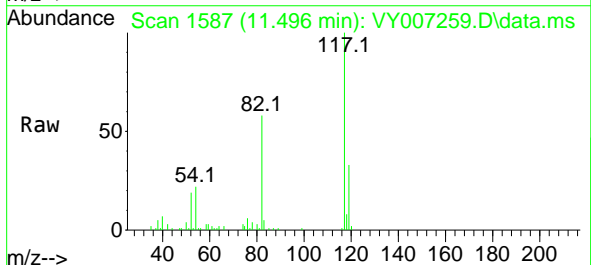


Tgt Ion: 95 Resp: 6904

Ion	Ratio	Lower	Upper
95	100		
174	80.3	0.0	148.4
176	77.0	0.0	146.6

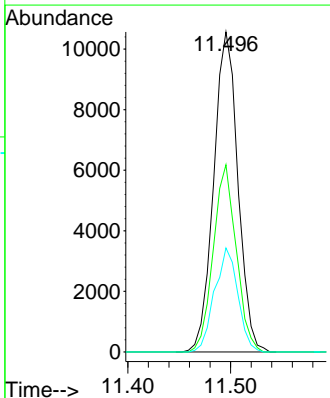
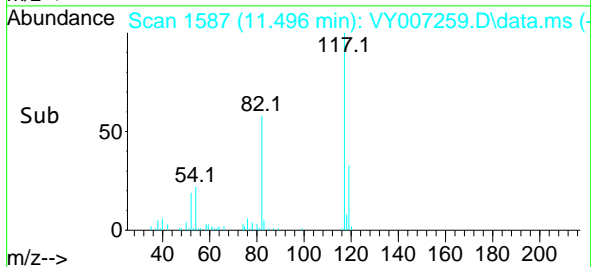


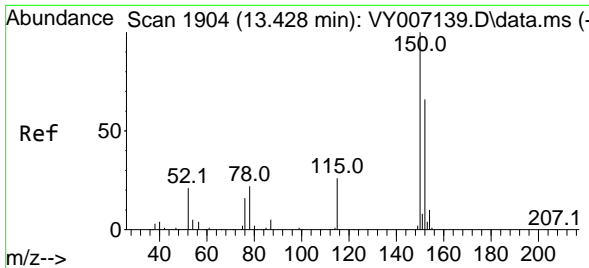
#63
 Chlorobenzene-d5
 Concen: 50.000 ug/l
 RT: 11.496 min Scan# 1587
 Delta R.T. 0.006 min
 Lab File: VY007259.D
 Acq: 21 Jan 2022 17:39



Tgt Ion: 117 Resp: 17259

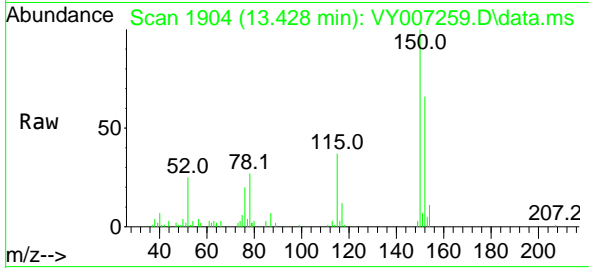
Ion	Ratio	Lower	Upper
117	100		
82	58.5	45.4	68.0
119	32.5	26.4	39.6





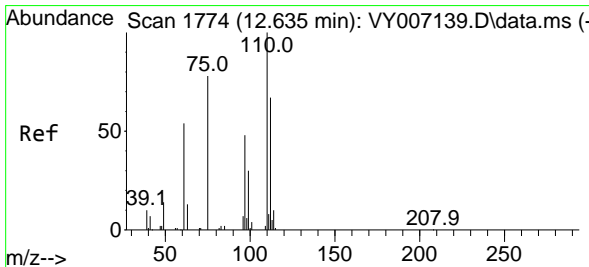
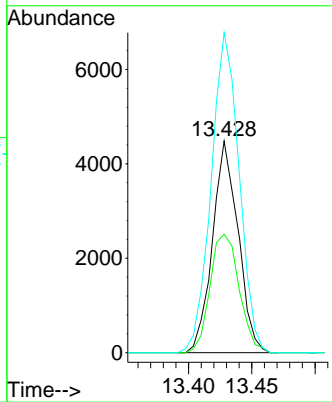
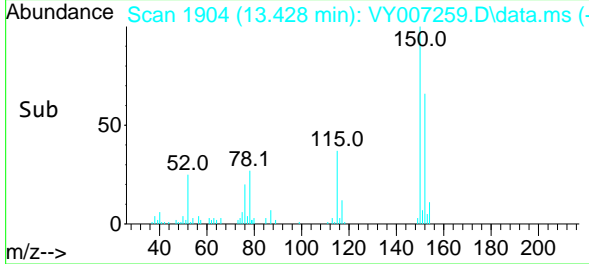
#72
 1,4-Dichlorobenzene-d4
 Concen: 50.000 ug/l
 RT: 13.428 min Scan# 1904
 Delta R.T. 0.000 min
 Lab File: VY007259.D
 Acq: 21 Jan 2022 17:39

Instrument : MSVOA_Y
 ClientSampleId :

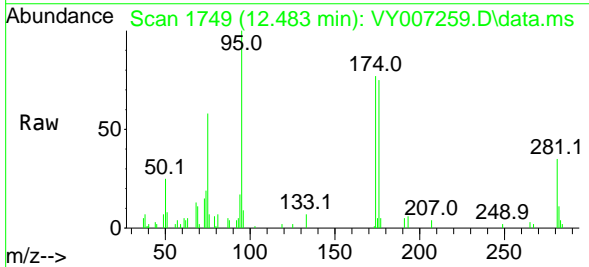


Tgt Ion:152 Resp: 6311

Ion	Ratio	Lower	Upper
152	100		
115	63.6	31.4	94.0
150	164.7	0.0	348.4

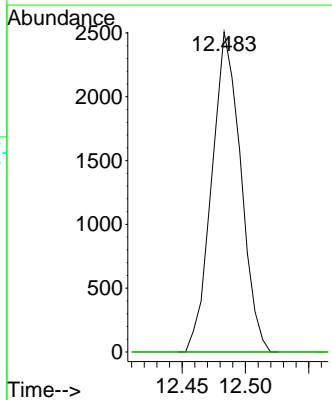
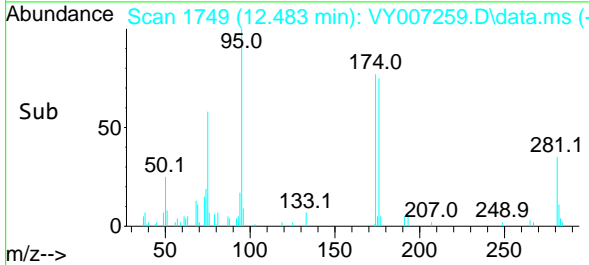


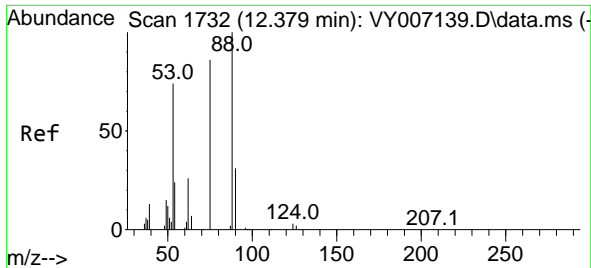
#76
 1,2,3-Trichloropropane
 Concen: 55.418 ug/l
 RT: 12.483 min Scan# 1749
 Delta R.T. -0.152 min
 Lab File: VY007259.D
 Acq: 21 Jan 2022 17:39



Tgt Ion: 75 Resp: 3988

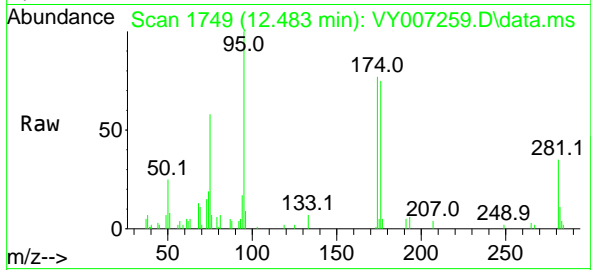
Ion	Ratio	Lower	Upper
75	100		
77	0.0	0.0	0.0





#81
 trans-1,4-Dichloro-2-butene
 Concen: 101.455 ug/l
 RT: 12.483 min Scan# 11
 Delta R.T. 0.104 min
 Lab File: VY007259.D
 Acq: 21 Jan 2022 17:39

Instrument :
 MSVOA_Y
 ClientSampleId :



Tgt Ion: 75 Resp: 3988

Ion	Ratio	Lower	Upper
75	100		
53	0.0	73.9	110.9#
89	0.0	0.0	0.0

