

Data Path : Z:\voasrv\HPCHEM1\MSVOA\_Y\Data\VY020322\  
 Data File : VY007375.D  
 Acq On : 03 Feb 2022 14:27  
 Operator : SY/MD  
 Sample : VIBLK  
 Misc : 5.00g/5.0mL/MSVOA\_Y/SOIL  
 ALS Vial : 12 Sample Multiplier: 1

Instrument :  
 MSVOA\_Y  
 ClientSampleId :  
 VIBLK

Integration Parameters: RTEINT.P

Integrator: RTE  
 Smoothing : ON                      Filtering: 5  
 Sampling : 1                         Min Area: 3 % of largest Peak  
 Start Thrs: 0.2                      Max Peaks: 100  
 Stop Thrs : 0                        Peak Location: TOP

If leading or trailing edge < 100 prefer < Baseline drop else tangent >  
 Peak separation: 5

Method : Z:\voasrv\HPCHEM1\MSVOA\_Y\methods\82Y020222S.M  
 Title : SW846 8260

Signal : TIC: VY007375.D\data.ms

peak #	R.T. min	first scan	max scan	last scan	PK TY	peak height	corr. area	corr. % max.	% of total
1	7.716	957	967	973	rBV2	92030	220540	33.17%	6.344%
2	7.789	973	979	990	rVB	150079	340018	51.14%	9.780%
3	8.137	1024	1036	1046	rBV	80110	179846	27.05%	5.173%
4	8.691	1118	1127	1140	rBV	241547	478973	72.04%	13.777%
5	10.179	1363	1371	1380	rBV	387088	664847	100.00%	19.123%
6	11.490	1578	1586	1595	rBV	365282	587703	88.40%	16.904%
7	12.483	1741	1749	1756	rBV	275045	437234	65.76%	12.576%
8	13.428	1897	1904	1910	rBV	335099	526430	79.18%	15.142%
9	13.965	1987	1992	1998	rBV	7118	11542	1.74%	0.332%
10	15.391	2220	2226	2234	rBV	16962	29482	4.43%	0.848%

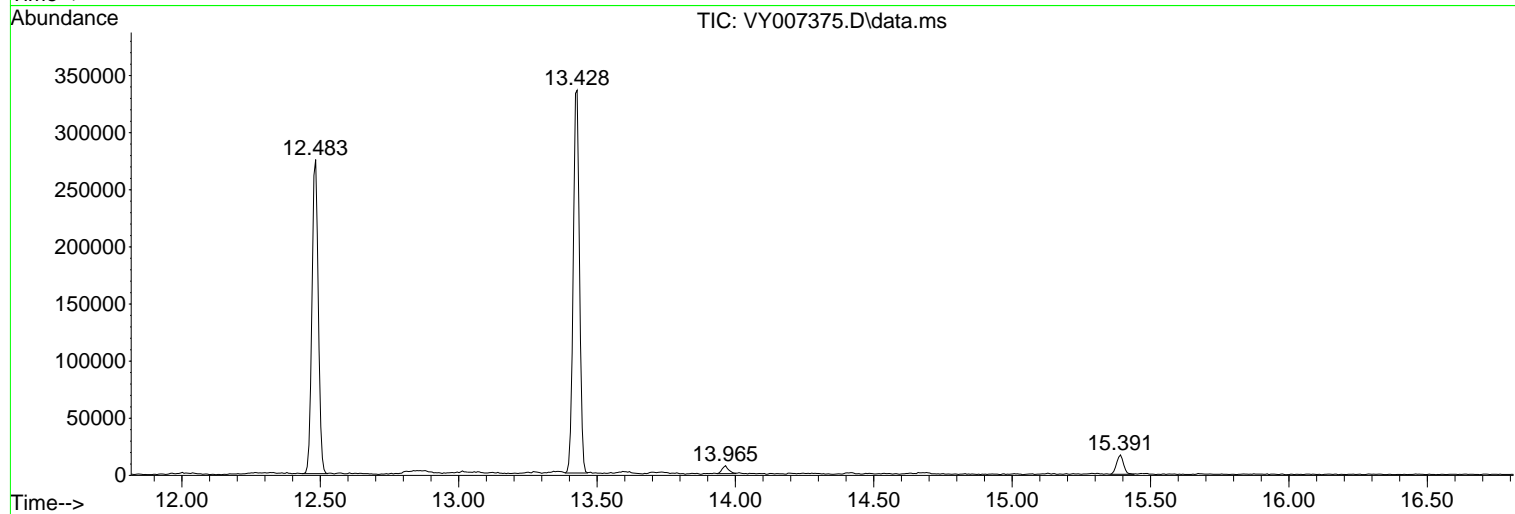
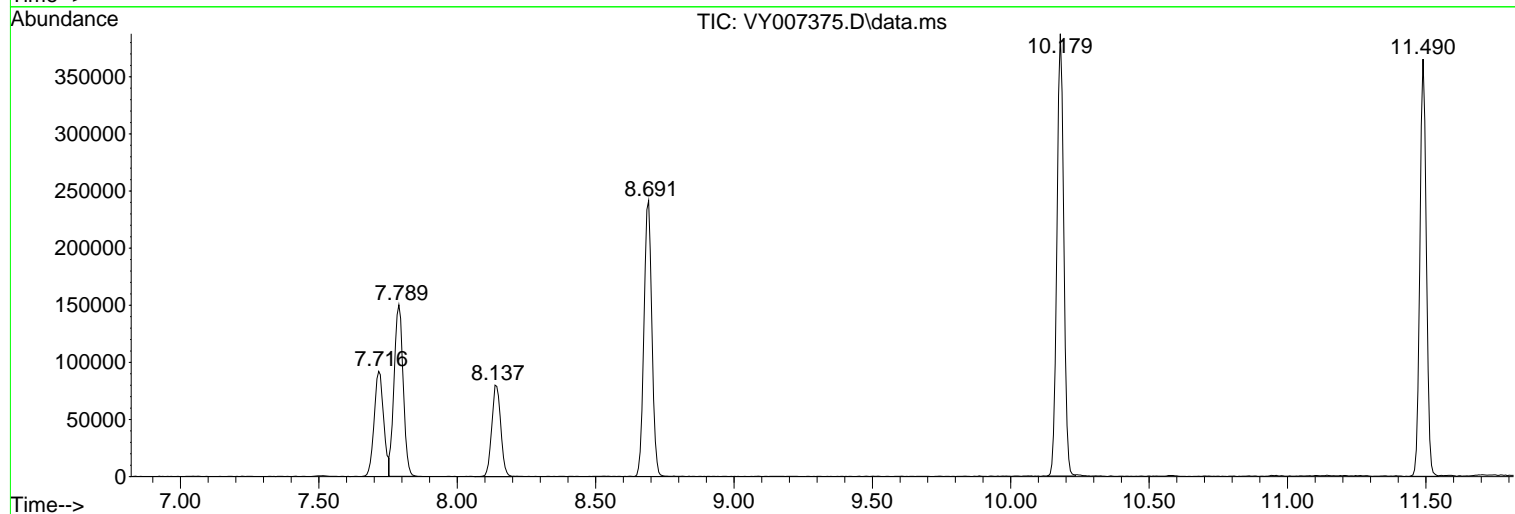
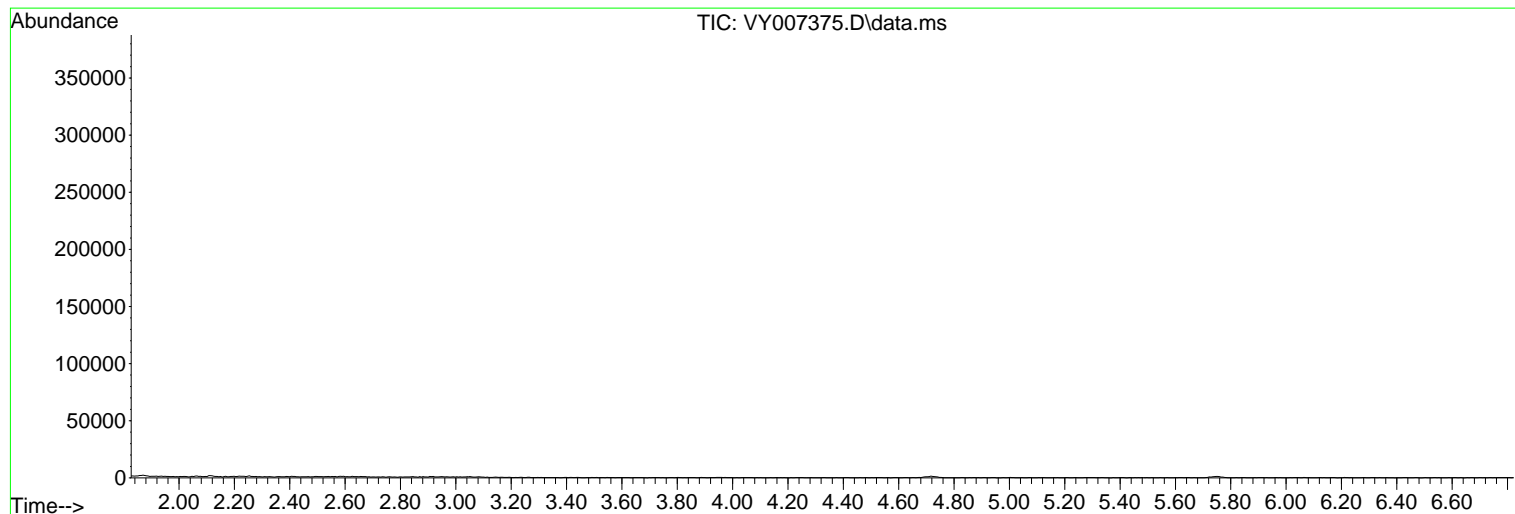
Sum of corrected areas: 3476615

Data Path : Z:\voasrv\HPCHEM1\MSVOA\_Y\Data\VY020322\  
 Data File : VY007375.D  
 Acq On : 03 Feb 2022 14:27  
 Operator : SY/MD  
 Sample : VIBLK  
 Misc : 5.00g/5.0mL/MSVOA\_Y/SOIL  
 ALS Vial : 12 Sample Multiplier: 1

Instrument :  
 MSVOA\_Y  
 ClientSampleId :  
 VIBLK

Quant Method : Z:\voasrv\HPCHEM1\MSVOA\_Y\methods\82Y020222S.M  
 Quant Title : SW846 8260

TIC Library : C:\Database\NIST0.L  
 TIC Integration Parameters: LSCINT.P



Library Search Compound Report

Data Path : Z:\voasrv\HPCHEM1\MSVOA\_Y\Data\VY020322\  
Data File : VY007375.D  
Acq On : 03 Feb 2022 14:27  
Operator : SY/MD  
Sample : VIBLK  
Misc : 5.00g/5.0mL/MSVOA\_Y/SOIL  
ALS Vial : 12 Sample Multiplier: 1

Instrument :  
MSVOA\_Y  
ClientSampleId :  
VIBLK

Quant Method : Z:\voasrv\HPCHEM1\MSVOA\_Y\methods\82Y020222S.M  
Quant Title : SW846 8260

TIC Library : C:\Database\NIST0.L  
TIC Integration Parameters: LSCINT.P

No Library Search Compounds Detected

\*\*\*\*\*

Data Path : Z:\voasrv\HPCHEM1\MSVOA\_Y\Data\VY020322\  
Data File : VY007375.D  
Acq On : 03 Feb 2022 14:27  
Operator : SY/MD  
Sample : VIBLK  
Misc : 5.00g/5.0mL/MSVOA\_Y/SOIL  
ALS Vial : 12 Sample Multiplier: 1

Instrument :  
MSVOA\_Y  
ClientSampleId :  
VIBLK

Quant Method : Z:\voasrv\HPCHEM1\MSVOA\_Y\methods\82Y020222S.M  
Quant Title : SW846 8260

TIC Library : C:\Database\NIST0.L  
TIC Integration Parameters: LSCINT.P

TIC Top Hit name	RT	EstConc	Units	Response	#	RT	Resp	Conc
------------------	----	---------	-------	----------	---	----	------	------

---