

Data Path : Z:\voasrv\HPCHEM1\MSVOA_Y\Data\VY041522\
 Data File : VY008347.D
 Acq On : 15 Apr 2022 13:42
 Operator : KP/MD
 Sample : N2401-10
 Misc : 4.46g/5.0mL/MSVOA_Y/SOIL
 ALS Vial : 8 Sample Multiplier: 1

Instrument :
 MSVOA_Y
 ClientSampleId :
 PR-1-6

Quant Time: Apr 16 04:57:57 2022
 Quant Method : Z:\voasrv\HPCHEM1\MSVOA_Y\methods\82Y040822S.M
 Quant Title : SW846 8260
 QLast Update : Fri Apr 08 16:02:50 2022
 Response via : Initial Calibration

Compound	R.T.	QIon	Response	Conc	Units	Dev(Min)

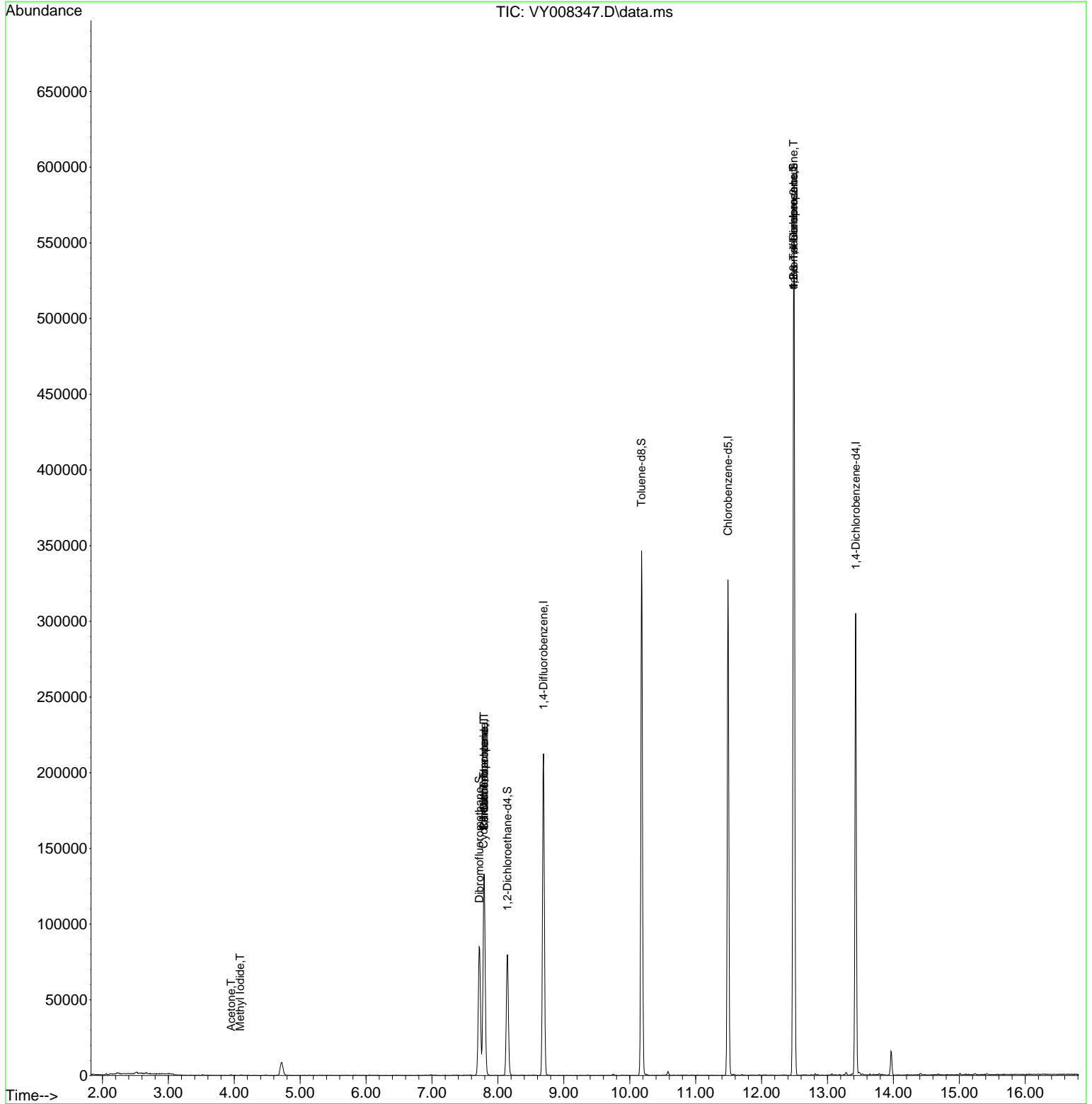
Internal Standards						
1) Pentafluorobenzene	7.789	168	105451	50.000	ug/l	0.00
34) 1,4-Difluorobenzene	8.691	114	190545	50.000	ug/l	0.00
63) Chlorobenzene-d5	11.490	117	182676	50.000	ug/l	0.00
72) 1,4-Dichlorobenzene-d4	13.428	152	77010	50.000	ug/l	0.00
System Monitoring Compounds						
33) 1,2-Dichloroethane-d4	8.143	65	61348	61.935	ug/l	0.00
Spiked Amount	50.000	Range	50 - 163	Recovery	=	123.860%
35) Dibromofluoromethane	7.716	113	61173	55.584	ug/l	0.00
Spiked Amount	50.000	Range	54 - 147	Recovery	=	111.160%
50) Toluene-d8	10.179	98	231166	61.384	ug/l	0.00
Spiked Amount	50.000	Range	49 - 140	Recovery	=	122.760%
62) 4-Bromofluorobenzene	12.483	95	78886	55.693	ug/l	0.00
Spiked Amount	50.000	Range	25 - 144	Recovery	=	111.380%
Target Compounds						
					Qvalue	
3) Chloromethane	2.113	50	166	Below Cal	#	44
5) Bromomethane	2.662	94	416	Below Cal		94
10) Methyl Iodide	4.089	142	262	2.584	ug/l #	54
16) Acetone	3.954	43	441	1.851	ug/l #	52
18) Methyl Acetate	4.491	43	214	Below Cal	#	56
20) Methylene Chloride	4.710	84	7095	Below Cal	#	76
31) Cyclohexane	7.783	56	2078	1.160	ug/l #	1
36) 1,1-Dichloropropene	7.789	75	8003	4.554	ug/l #	52
38) Carbon Tetrachloride	7.789	117	10245	5.419	ug/l #	15
76) 1,2,3-Trichloropropane	12.483	75	45861	53.846	ug/l #	100
81) trans-1,4-Dichloro-2-b...	12.483	75	45861	120.478	ug/l #	8

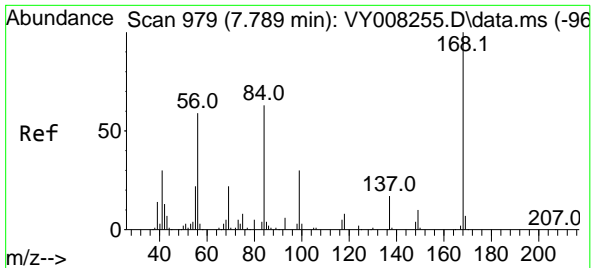
(#) = qualifier out of range (m) = manual integration (+) = signals summed

Data Path : Z:\voasrv\HPCHEM1\MSVOA_Y\Data\VY041522\
Data File : VY008347.D
Acq On : 15 Apr 2022 13:42
Operator : KP/MD
Sample : N2401-10
Misc : 4.46g/5.0mL/MSVOA_Y/SOIL
ALS Vial : 8 Sample Multiplier: 1

Instrument :
MSVOA_Y
ClientSampleId :
PR-1-6

Quant Time: Apr 16 04:57:57 2022
Quant Method : Z:\voasrv\HPCHEM1\MSVOA_Y\methods\82Y040822S.M
Quant Title : SW846 8260
QLast Update : Fri Apr 08 16:02:50 2022
Response via : Initial Calibration

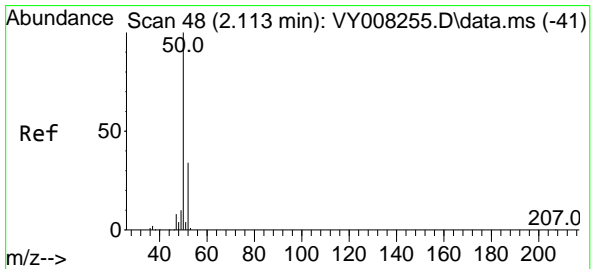
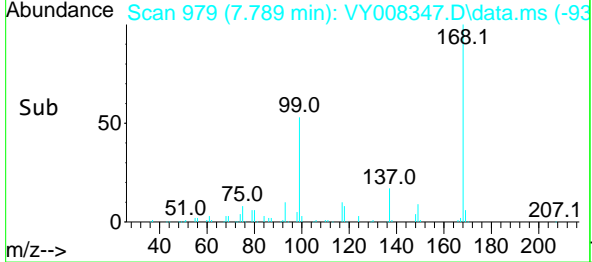
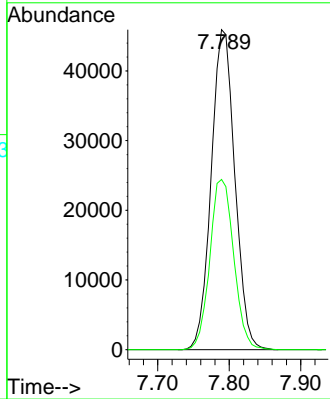
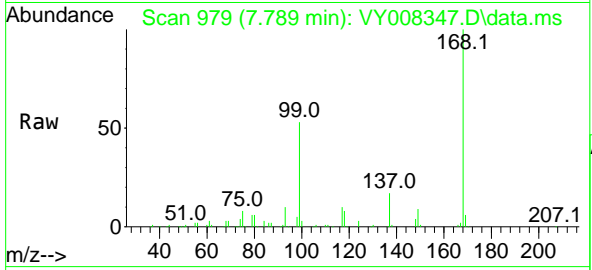




#1
 Pentafluorobenzene
 Concen: 50.000 ug/l
 RT: 7.789 min Scan# 91
 Delta R.T. 0.000 min
 Lab File: VY008347.D
 Acq: 15 Apr 2022 13:42

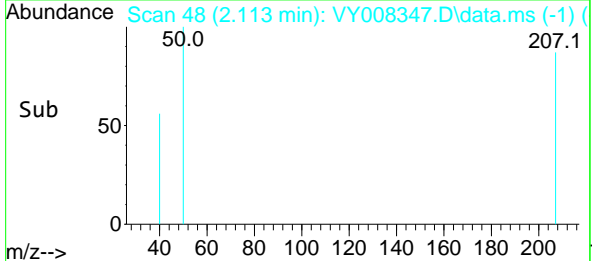
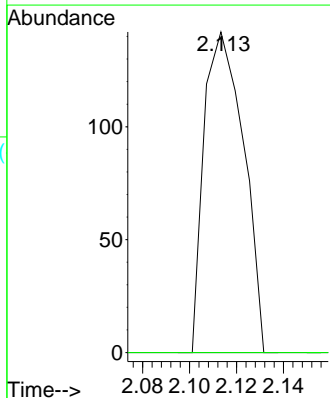
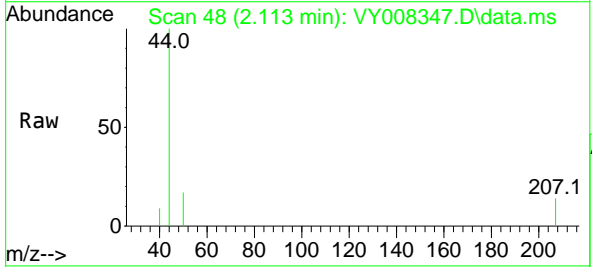
Instrument : MSVOA_Y
 ClientSampleId : PR-1-6

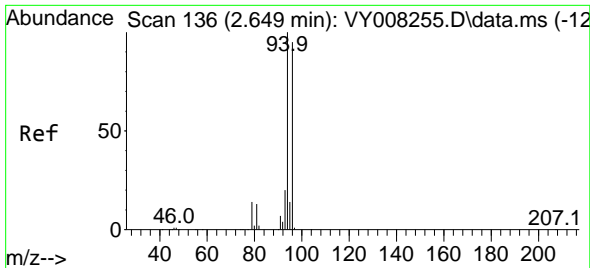
Tgt Ion:168 Resp: 105451
 Ion Ratio Lower Upper
 168 100
 99 53.2 46.9 70.3



#3
 Chloromethane
 Concen: Below Cal
 RT: 2.113 min Scan# 48
 Delta R.T. 0.000 min
 Lab File: VY008347.D
 Acq: 15 Apr 2022 13:42

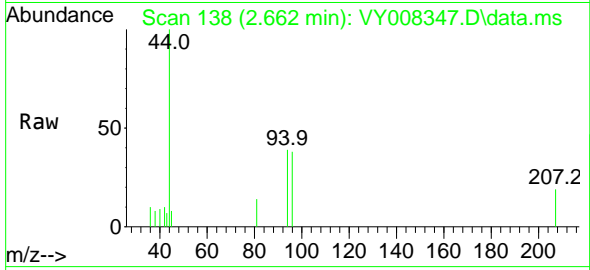
Tgt Ion: 50 Resp: 166
 Ion Ratio Lower Upper
 50 100
 52 0.0 24.6 37.0#



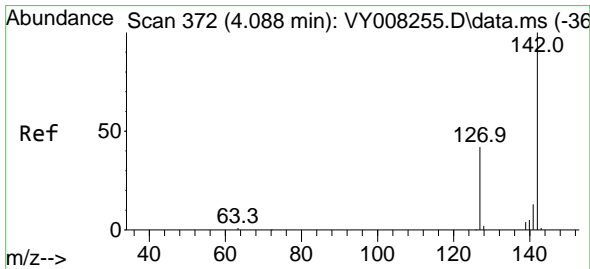
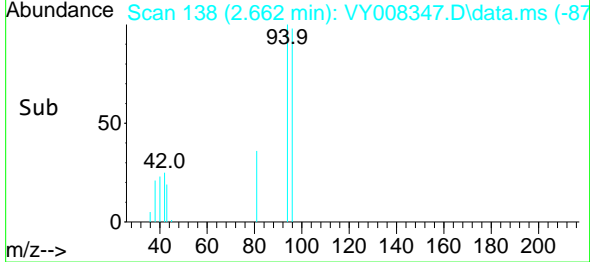
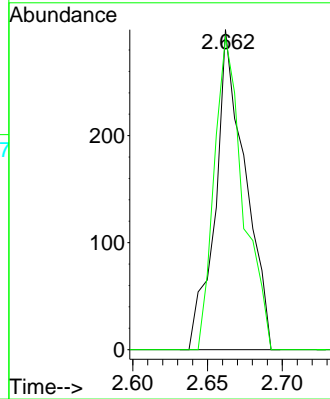


#5
 Bromomethane
 Concen: Below Cal
 RT: 2.662 min Scan# 11
 Delta R.T. 0.013 min
 Lab File: VY008347.D
 Acq: 15 Apr 2022 13:42

Instrument :
 MSVOA_Y
 ClientSampleId :
 PR-1-6

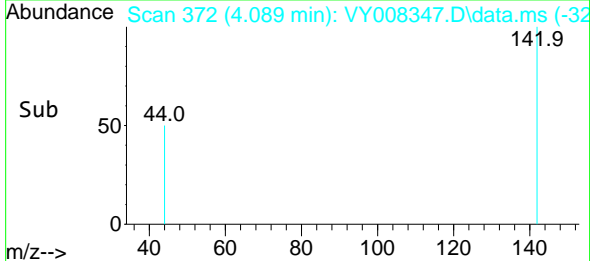
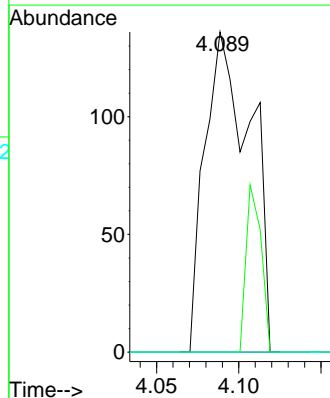
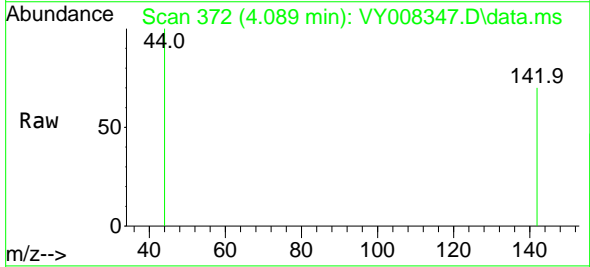


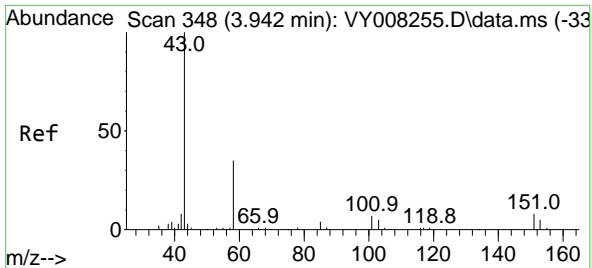
Tgt Ion: 94 Resp: 416
 Ion Ratio Lower Upper
 94 100
 96 97.7 73.5 110.3



#10
 Methyl Iodide
 Concen: 2.584 ug/l
 RT: 4.089 min Scan# 372
 Delta R.T. 0.001 min
 Lab File: VY008347.D
 Acq: 15 Apr 2022 13:42

Tgt Ion:142 Resp: 262
 Ion Ratio Lower Upper
 142 100
 127 17.2 41.5 62.3#
 141 0.0 11.9 17.9#

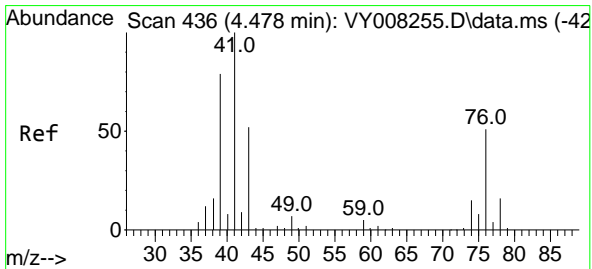
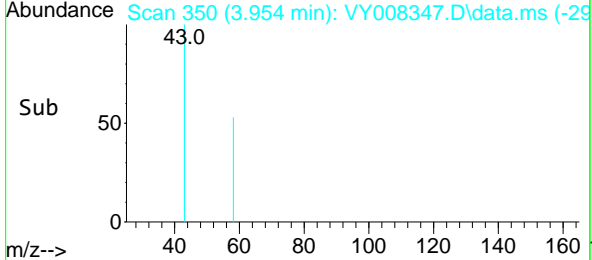
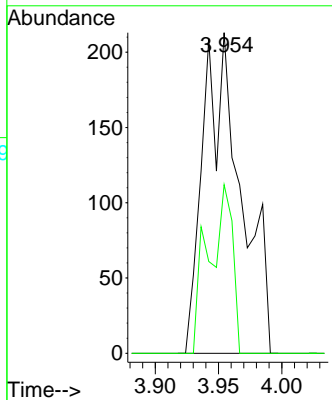
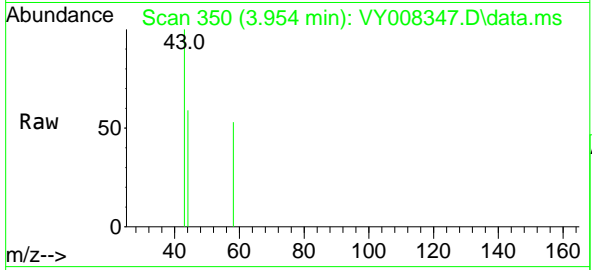




#16
 Acetone
 Concen: 1.851 ug/l
 RT: 3.954 min Scan# 31
 Delta R.T. 0.012 min
 Lab File: VY008347.D
 Acq: 15 Apr 2022 13:42

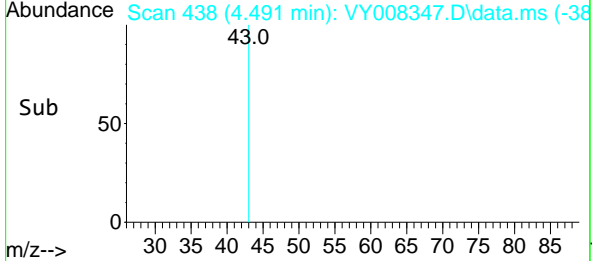
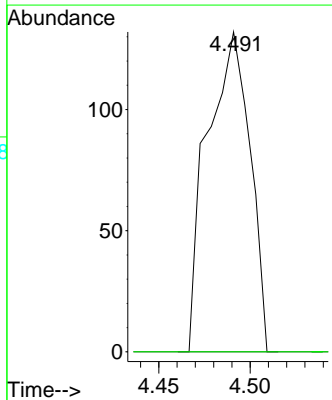
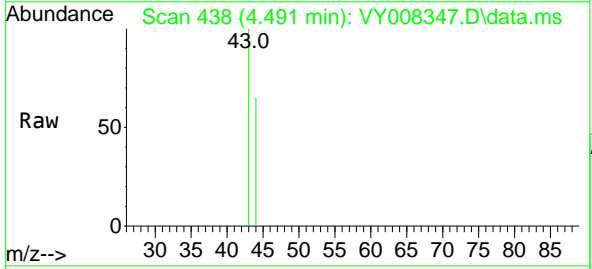
Instrument : MSVOA_Y
 ClientSampleId : PR-1-6

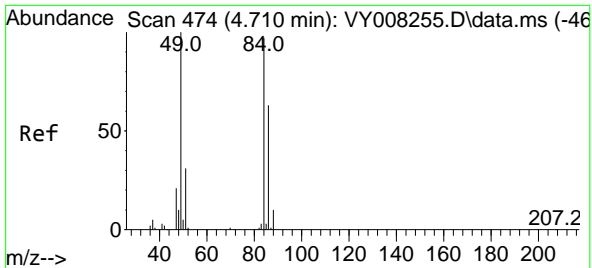
Tgt Ion: 43 Resp: 441
 Ion Ratio Lower Upper
 43 100
 58 52.6 22.0 33.0#



#18
 Methyl Acetate
 Concen: Below Cal
 RT: 4.491 min Scan# 438
 Delta R.T. 0.013 min
 Lab File: VY008347.D
 Acq: 15 Apr 2022 13:42

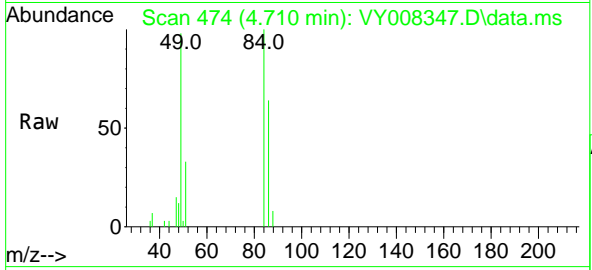
Tgt Ion: 43 Resp: 214
 Ion Ratio Lower Upper
 43 100
 74 0.0 16.6 24.8#





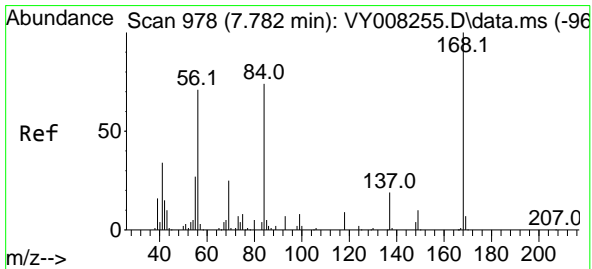
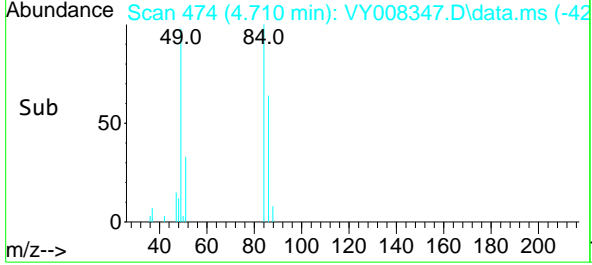
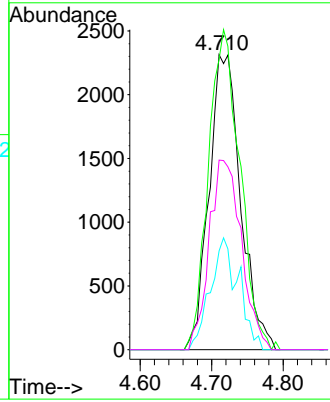
#20
 Methylene Chloride
 Concen: Below Cal
 RT: 4.710 min Scan# 41
 Delta R.T. 0.000 min
 Lab File: VY008347.D
 Acq: 15 Apr 2022 13:42

Instrument :
 MSVOA_Y
 ClientSampleId :
 PR-1-6



Tgt Ion: 84 Resp: 7095

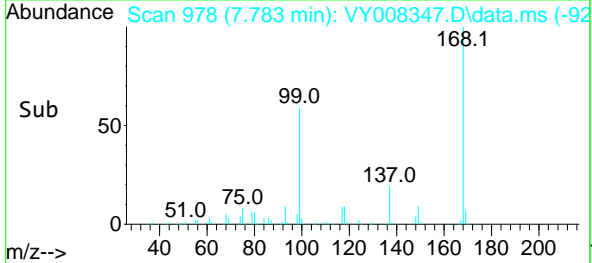
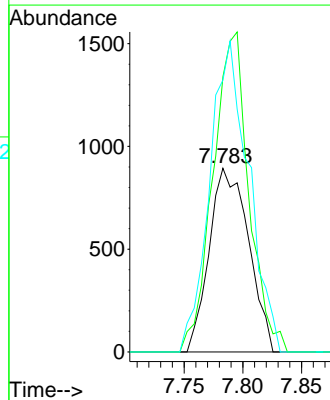
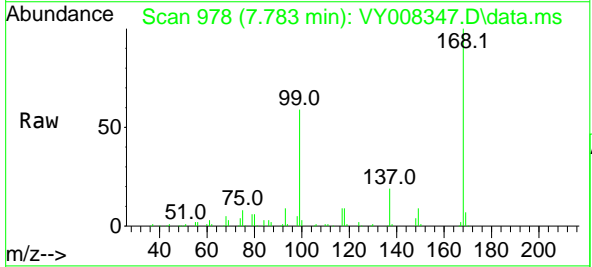
Ion	Ratio	Lower	Upper
84	100		
49	98.4	114.4	171.6#
51	33.5	35.3	52.9#
86	64.3	53.7	80.5

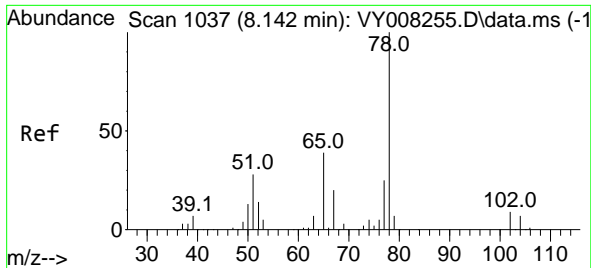


#31
 Cyclohexane
 Concen: 1.160 ug/l
 RT: 7.783 min Scan# 978
 Delta R.T. 0.001 min
 Lab File: VY008347.D
 Acq: 15 Apr 2022 13:42

Tgt Ion: 56 Resp: 2078

Ion	Ratio	Lower	Upper
56	100		
69	149.8	26.7	40.1#
84	148.0	67.2	100.8#

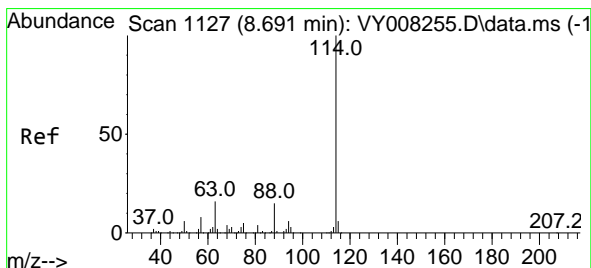
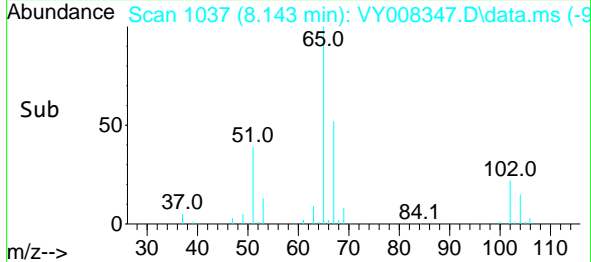
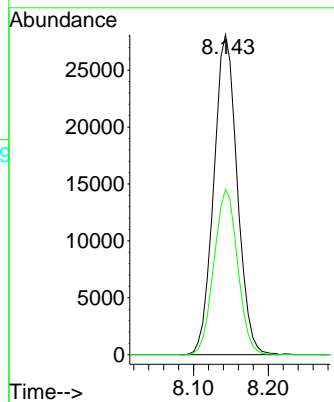
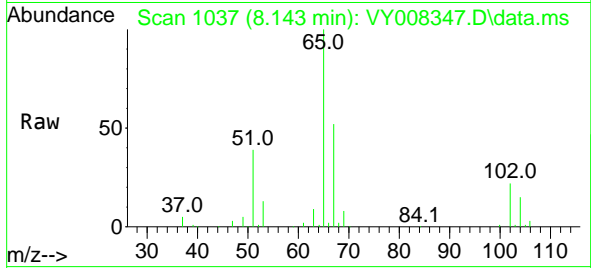




#33
 1,2-Dichloroethane-d4
 Concen: 61.935 ug/l
 RT: 8.143 min Scan# 1037
 Delta R.T. 0.001 min
 Lab File: VY008347.D
 Acq: 15 Apr 2022 13:42

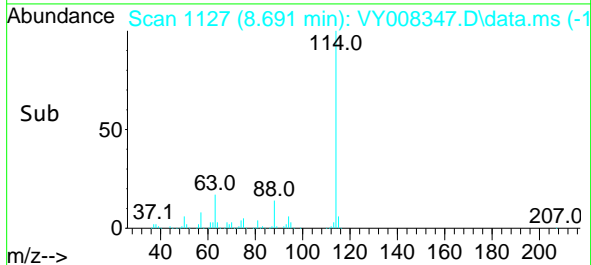
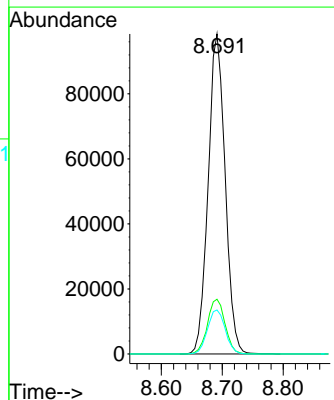
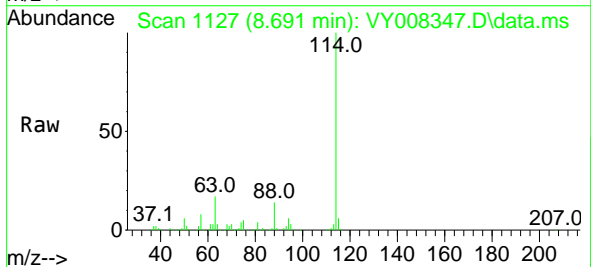
Instrument : MSVOA_Y
 ClientSampleId : PR-1-6

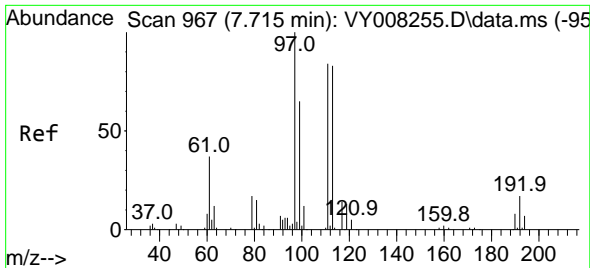
Tgt Ion: 65 Resp: 61348
 Ion Ratio Lower Upper
 65 100
 67 52.2 0.0 99.4



#34
 1,4-Difluorobenzene
 Concen: 50.000 ug/l
 RT: 8.691 min Scan# 1127
 Delta R.T. 0.000 min
 Lab File: VY008347.D
 Acq: 15 Apr 2022 13:42

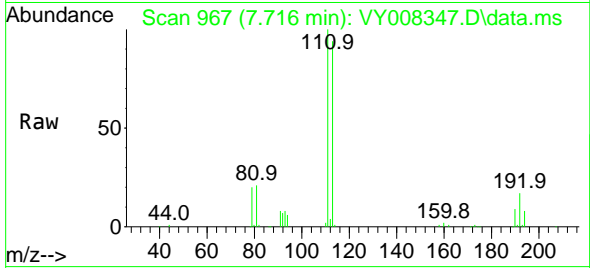
Tgt Ion:114 Resp: 190545
 Ion Ratio Lower Upper
 114 100
 63 17.1 0.0 43.2
 88 13.8 0.0 31.8



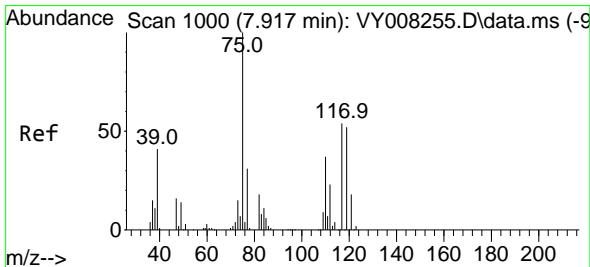
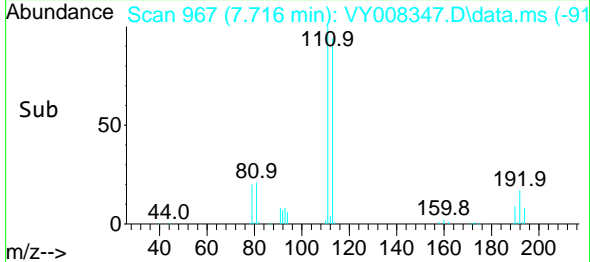
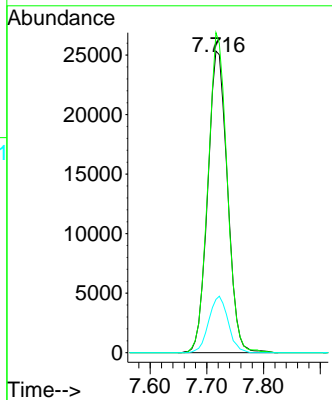


#35
 Dibromofluoromethane
 Concen: 55.584 ug/l
 RT: 7.716 min Scan# 90
 Delta R.T. 0.001 min
 Lab File: VY008347.D
 Acq: 15 Apr 2022 13:42

Instrument : MSVOA_Y
 ClientSampleId : PR-1-6

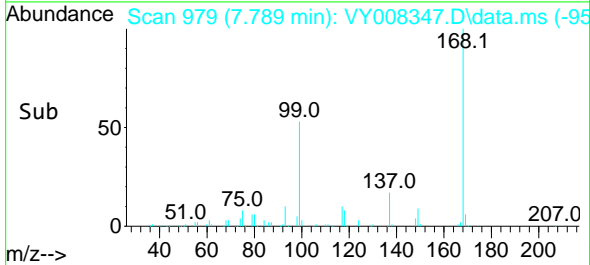
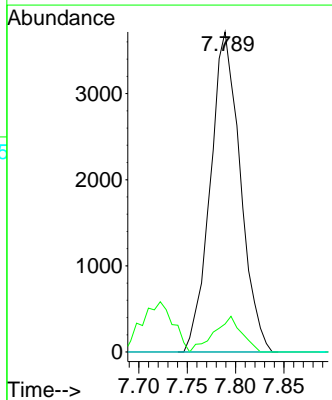
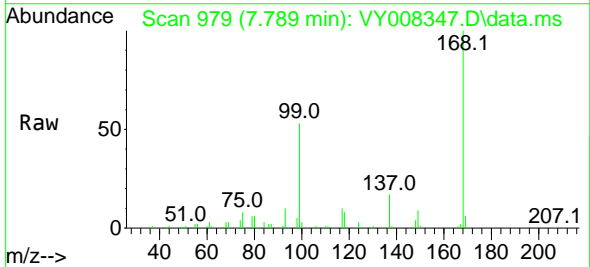


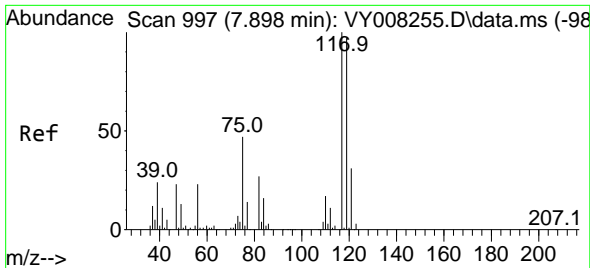
Tgt Ion:113 Resp: 61173
 Ion Ratio Lower Upper
 113 100
 111 102.7 82.6 124.0
 192 18.4 17.6 26.4



#36
 1,1-Dichloropropene
 Concen: 4.554 ug/l
 RT: 7.789 min Scan# 979
 Delta R.T. -0.128 min
 Lab File: VY008347.D
 Acq: 15 Apr 2022 13:42

Tgt Ion: 75 Resp: 8003
 Ion Ratio Lower Upper
 75 100
 110 10.3 17.1 51.2#
 77 0.0 24.4 36.6#

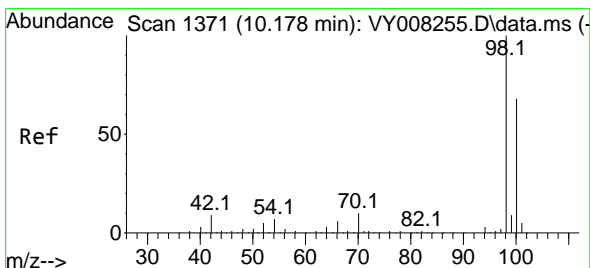
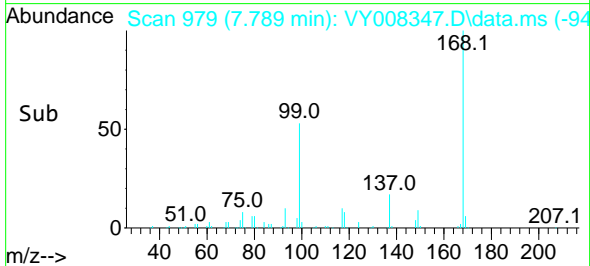
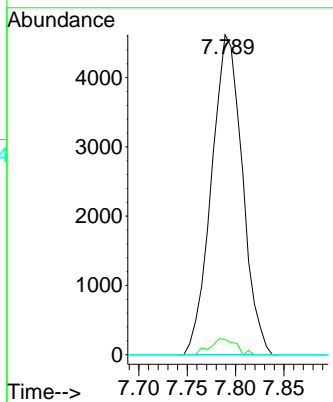
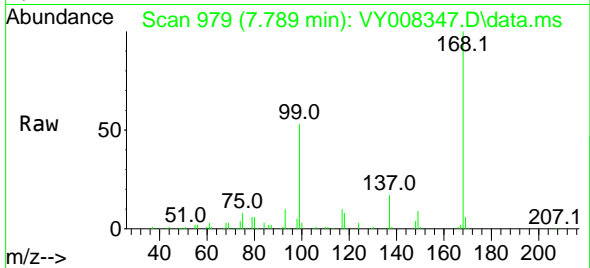




#38
 Carbon Tetrachloride
 Concen: 5.419 ug/l
 RT: 7.789 min Scan# 91
 Delta R.T. -0.109 min
 Lab File: VY008347.D
 Acq: 15 Apr 2022 13:42

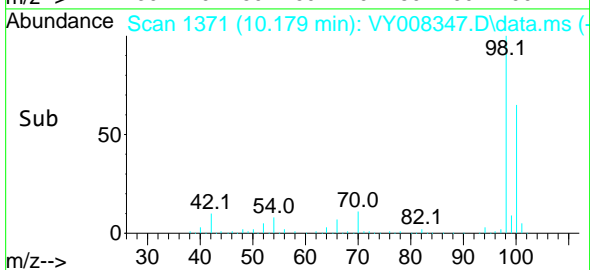
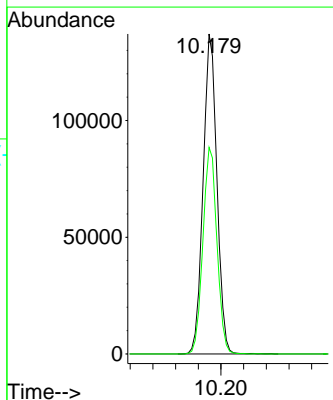
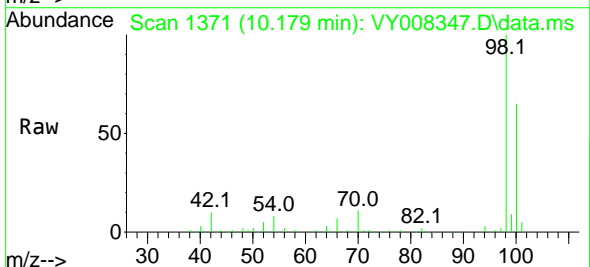
Instrument : MSVOA_Y
 ClientSampleId : PR-1-6

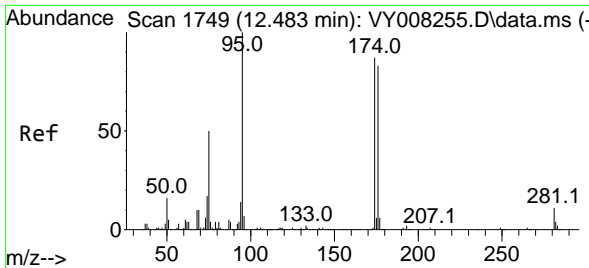
Tgt Ion	Resp	Lower	Upper
117	10245		
119	4.8	77.9	116.9#
121	0.0	24.8	37.2#



#50
 Toluene-d8
 Concen: 61.384 ug/l
 RT: 10.179 min Scan# 1371
 Delta R.T. 0.001 min
 Lab File: VY008347.D
 Acq: 15 Apr 2022 13:42

Tgt Ion	Resp	Lower	Upper
98	231166		
98	100		
100	65.6	50.2	75.2



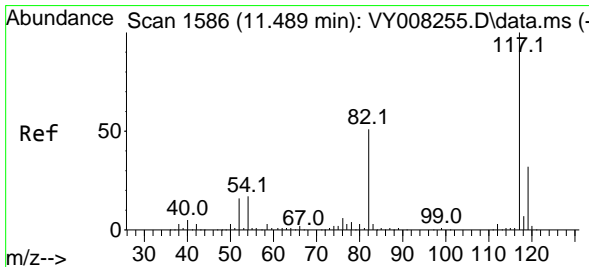
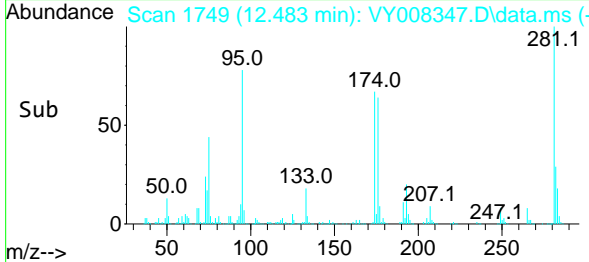
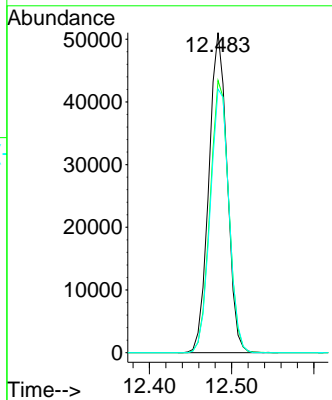
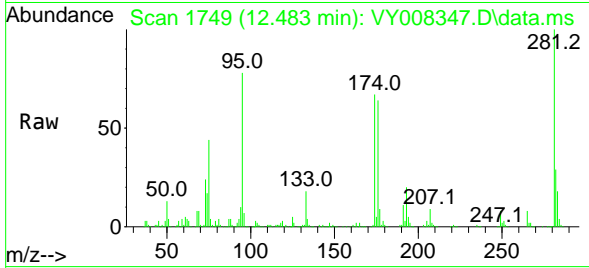


#62
 4-Bromofluorobenzene
 Concen: 55.693 ug/l
 RT: 12.483 min Scan# 1749
 Delta R.T. 0.000 min
 Lab File: VY008347.D
 Acq: 15 Apr 2022 13:42

Instrument : MSVOA_Y
 ClientSampleId : PR-1-6

Tgt Ion: 95 Resp: 78886

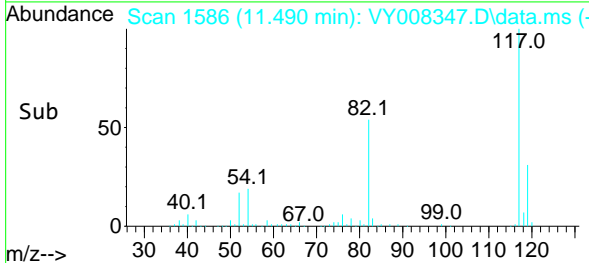
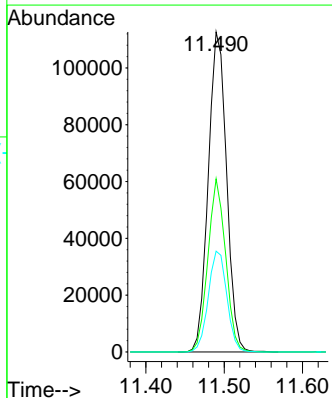
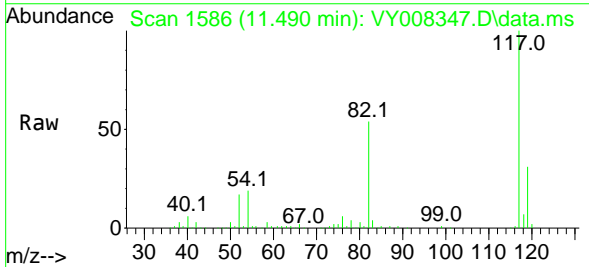
Ion	Ratio	Lower	Upper
95	100		
174	86.2	0.0	177.0
176	84.3	0.0	175.8

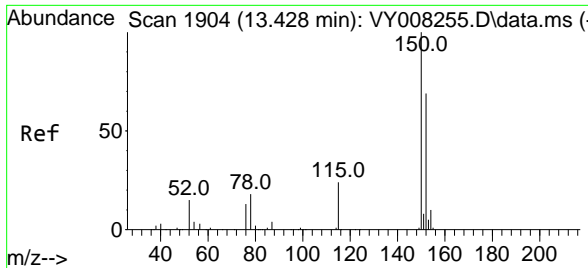


#63
 Chlorobenzene-d5
 Concen: 50.000 ug/l
 RT: 11.490 min Scan# 1586
 Delta R.T. 0.001 min
 Lab File: VY008347.D
 Acq: 15 Apr 2022 13:42

Tgt Ion: 117 Resp: 182676

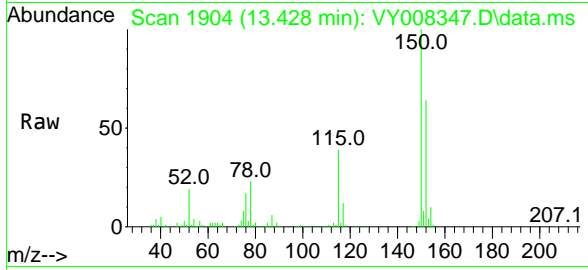
Ion	Ratio	Lower	Upper
117	100		
82	54.1	43.0	64.4
119	31.5	25.4	38.0





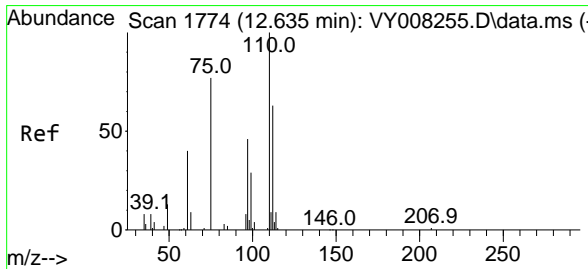
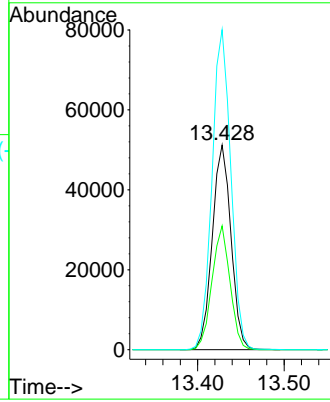
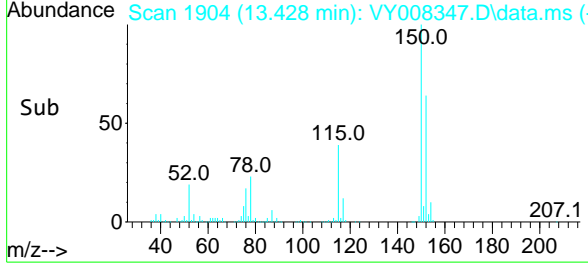
#72
 1,4-Dichlorobenzene-d4
 Concen: 50.000 ug/l
 RT: 13.428 min Scan# 1904
 Delta R.T. 0.000 min
 Lab File: VY008347.D
 Acq: 15 Apr 2022 13:42

Instrument : MSVOA_Y
 ClientSampleId : PR-1-6

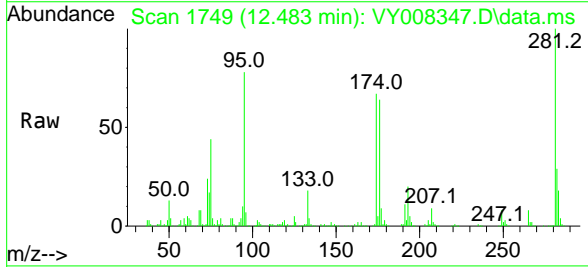


Tgt Ion:152 Resp: 77010

Ion	Ratio	Lower	Upper
152	100		
115	58.1	28.2	84.7
150	156.6	0.0	347.6

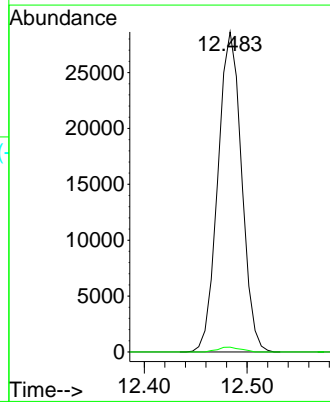
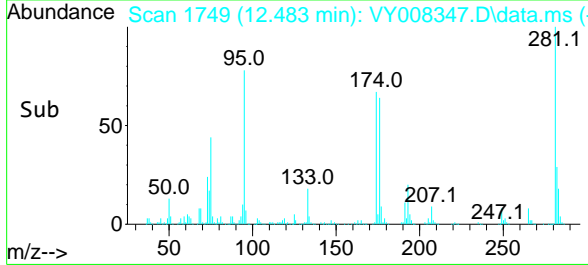


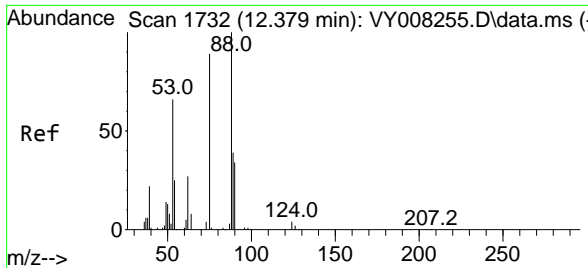
#76
 1,2,3-Trichloropropane
 Concen: 53.846 ug/l
 RT: 12.483 min Scan# 1749
 Delta R.T. -0.152 min
 Lab File: VY008347.D
 Acq: 15 Apr 2022 13:42



Tgt Ion: 75 Resp: 45861

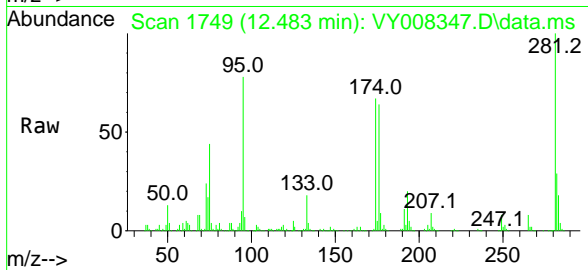
Ion	Ratio	Lower	Upper
75	100		
77	1.5	0.0	0.0#





#81
 trans-1,4-Dichloro-2-butene
 Concen: 120.478 ug/l
 RT: 12.483 min Scan# 11
 Delta R.T. 0.104 min
 Lab File: VY008347.D
 Acq: 15 Apr 2022 13:42

Instrument :
 MSVOA_Y
 ClientSampleId :
 PR-1-6



Tgt Ion: 75 Resp: 45861

Ion	Ratio	Lower	Upper
75	100		
53	0.0	85.3	127.9#
89	2.7	37.0	55.4#

