

Data Path : Z:\voasrv\HPCHEM1\MSVOA\_Y\Data\VY041923\  
 Data File : VY013347.D  
 Acq On : 19 Apr 2023 15:55  
 Operator : KP/MD  
 Sample : 02371-13  
 Misc : 5.05g/5.0mL/MSVOA\_Y/SOIL  
 ALS Vial : 13 Sample Multiplier: 1

Instrument :  
 MSVOA\_Y  
 ClientSampleId :

Quant Time: Apr 20 06:56:35 2023  
 Quant Method : Z:\voasrv\HPCHEM1\MSVOA\_Y\methods\82Y041223S.M  
 Quant Title : SW846 8260  
 QLast Update : Thu Apr 13 05:55:16 2023  
 Response via : Initial Calibration

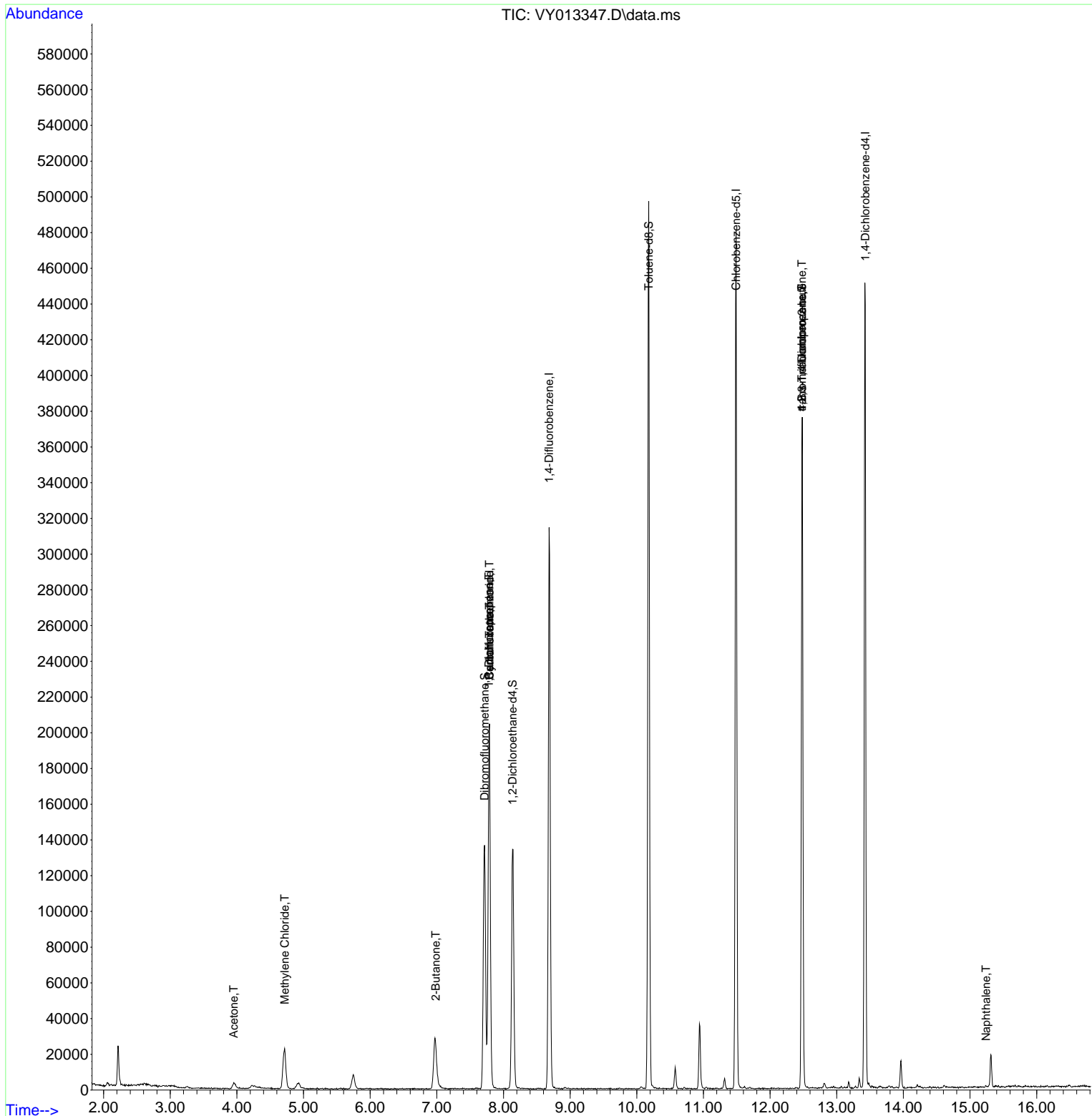
Compound	R.T.	QIon	Response	Conc	Units	Dev(Min)
-----						
Internal Standards						
1) Pentafluorobenzene	7.789	168	161396	50.000	ug/l	0.00
34) 1,4-Difluorobenzene	8.685	114	266469	50.000	ug/l	0.00
63) Chlorobenzene-d5	11.489	117	262167	50.000	ug/l	0.00
72) 1,4-Dichlorobenzene-d4	13.428	152	120233	50.000	ug/l	0.00
System Monitoring Compounds						
33) 1,2-Dichloroethane-d4	8.136	65	107580	55.465	ug/l	0.00
Spiked Amount	50.000	Range	50 - 163	Recovery	=	110.920%
35) Dibromofluoromethane	7.716	113	97490	56.513	ug/l	0.00
Spiked Amount	50.000	Range	54 - 147	Recovery	=	113.020%
50) Toluene-d8	10.179	98	327999	51.081	ug/l	0.00
Spiked Amount	50.000	Range	49 - 140	Recovery	=	102.160%
62) 4-Bromofluorobenzene	12.477	95	104700	50.184	ug/l	0.00
Spiked Amount	50.000	Range	25 - 144	Recovery	=	100.360%
Target Compounds						
					Qvalue	
11) Tert butyl alcohol	4.936	59	3319	Below Cal	#	74
16) Acetone	3.954	43	7137	10.702	ug/l	95
20) Methylene Chloride	4.716	84	16221	5.398	ug/l	# 90
25) 2-Butanone	6.984	43	1124	1.316	ug/l	# 74
31) Cyclohexane	7.789	56	3221	1.098	ug/l	# 1
36) 1,1-Dichloropropene	7.783	75	12145	4.647	ug/l	# 48
38) Carbon Tetrachloride	7.789	117	14995	5.189	ug/l	# 19
76) 1,2,3-Trichloropropane	12.477	75	53869	35.956	ug/l	# 100
81) trans-1,4-Dichloro-2-b...	12.477	75	53869	74.626	ug/l	# 13
95) Naphthalene	15.239	128	669	3.323	ug/l	# 86
-----						

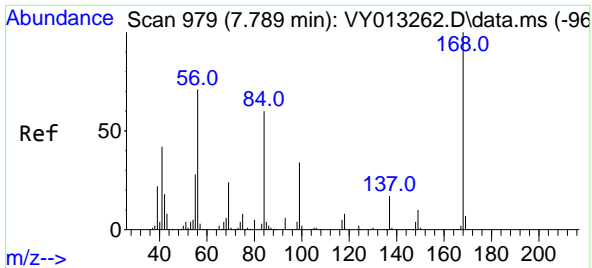
(#) = qualifier out of range (m) = manual integration (+) = signals summed

Data Path : Z:\voasrv\HPCHEM1\MSVOA\_Y\Data\VY041923\  
 Data File : VY013347.D  
 Acq On : 19 Apr 2023 15:55  
 Operator : KP/MD  
 Sample : 02371-13  
 Misc : 5.05g/5.0mL/MSVOA\_Y/SOIL  
 ALS Vial : 13 Sample Multiplier: 1

Instrument :  
 MSVOA\_Y  
 ClientSampleId :

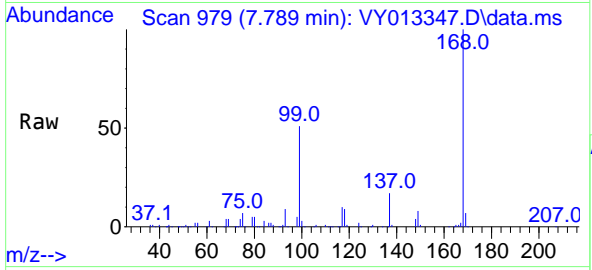
Quant Time: Apr 20 06:56:35 2023  
 Quant Method : Z:\voasrv\HPCHEM1\MSVOA\_Y\methods\82Y041223S.M  
 Quant Title : SW846 8260  
 QLast Update : Thu Apr 13 05:55:16 2023  
 Response via : Initial Calibration



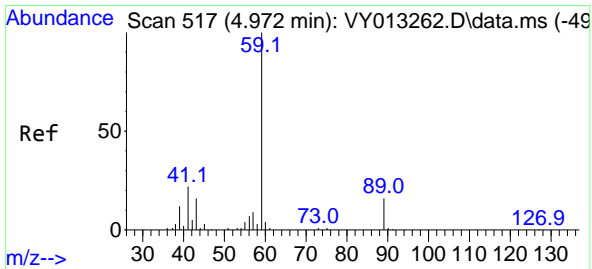
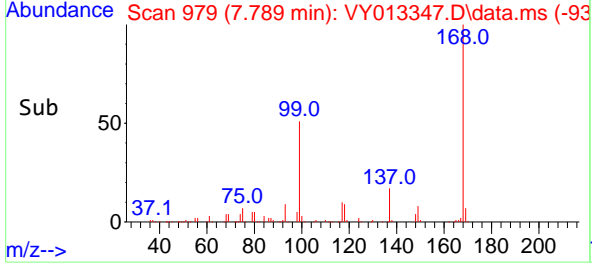
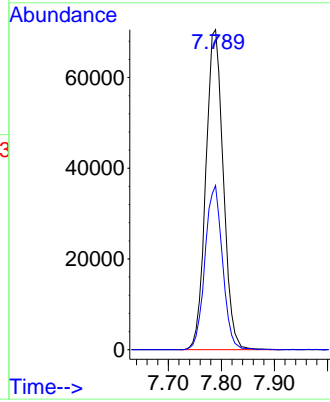


#1  
 Pentafluorobenzene  
 Concen: 50.000 ug/l  
 RT: 7.789 min Scan# 91  
 Delta R.T. -0.000 min  
 Lab File: VY013347.D  
 Acq: 19 Apr 2023 15:55

Instrument :  
 MSVOA\_Y  
 ClientSampleId :

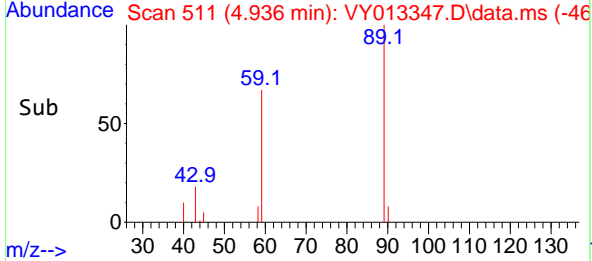
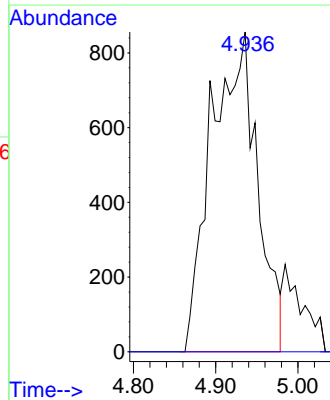
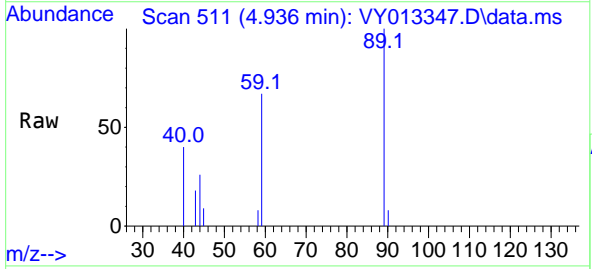


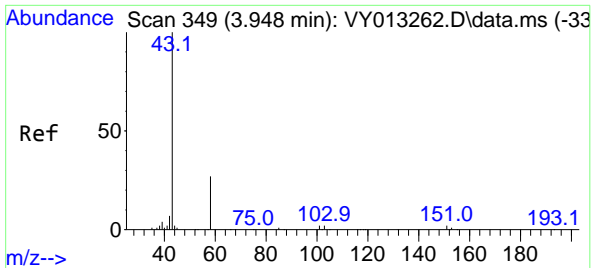
Tgt Ion:168 Resp: 161396  
 Ion Ratio Lower Upper  
 168 100  
 99 51.3 41.7 62.5



#11  
 Tert butyl alcohol  
 Concen: Below Cal  
 RT: 4.936 min Scan# 511  
 Delta R.T. -0.036 min  
 Lab File: VY013347.D  
 Acq: 19 Apr 2023 15:55

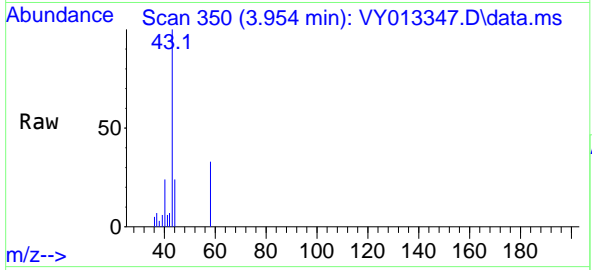
Tgt Ion: 59 Resp: 3319  
 Ion Ratio Lower Upper  
 59 100  
 57 0.0 7.7 11.5#



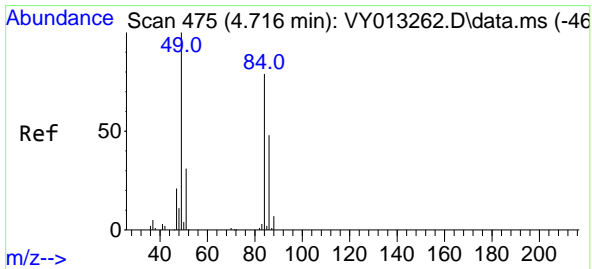
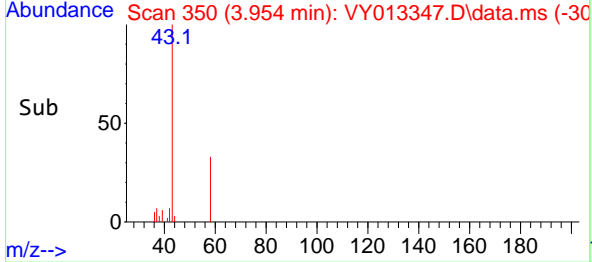
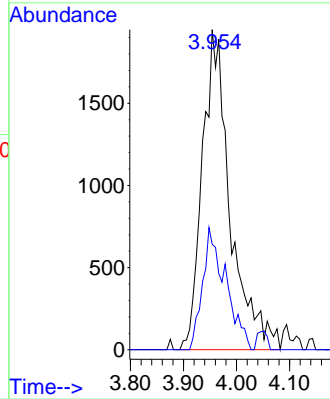


#16  
 Acetone  
 Concen: 10.702 ug/l  
 RT: 3.954 min Scan# 31  
 Delta R.T. 0.006 min  
 Lab File: VY013347.D  
 Acq: 19 Apr 2023 15:55

Instrument :  
 MSVOA\_Y  
 ClientSampleId :

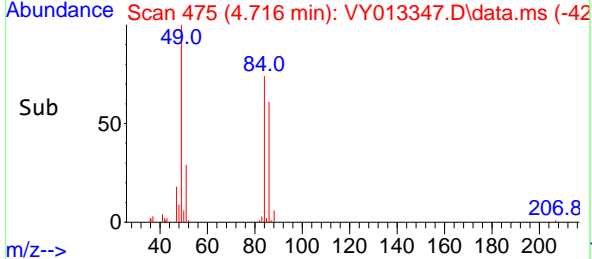
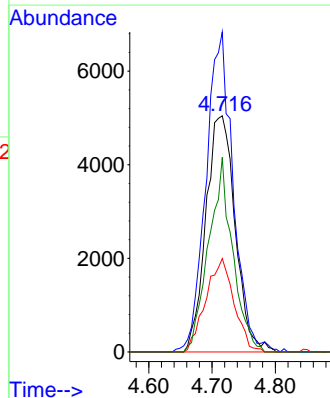
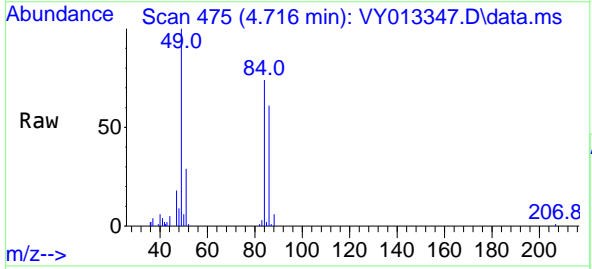


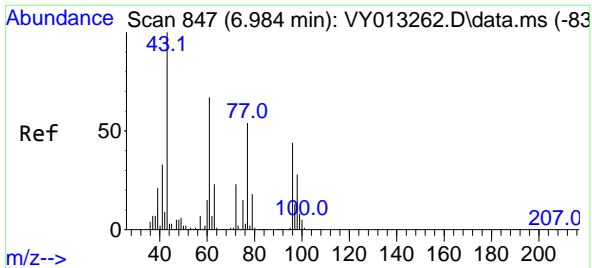
Tgt Ion: 43 Resp: 7137  
 Ion Ratio Lower Upper  
 43 100  
 58 33.0 24.2 36.2



#20  
 Methylene Chloride  
 Concen: 5.398 ug/l  
 RT: 4.716 min Scan# 475  
 Delta R.T. 0.000 min  
 Lab File: VY013347.D  
 Acq: 19 Apr 2023 15:55

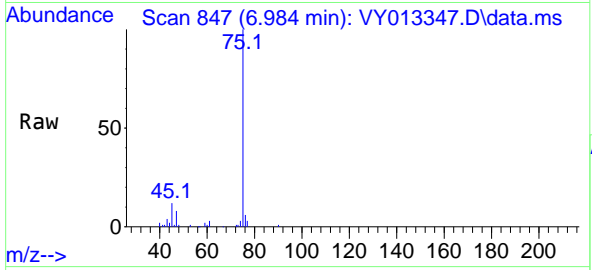
Tgt Ion: 84 Resp: 16221  
 Ion Ratio Lower Upper  
 84 100  
 49 135.5 102.6 154.0  
 51 39.6 31.9 47.9  
 86 82.4 51.0 76.6#



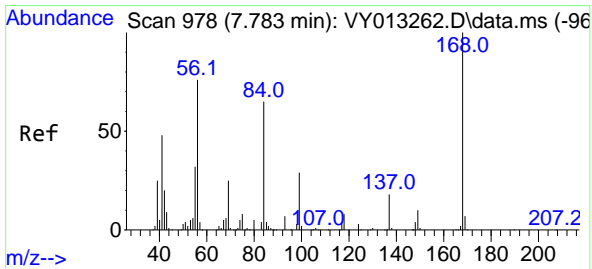
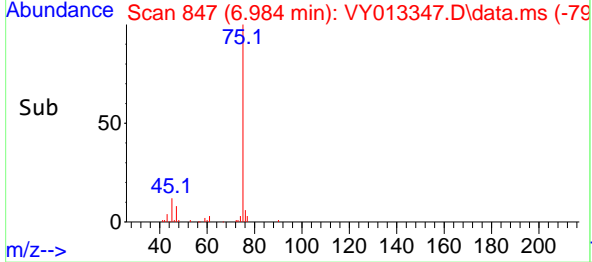
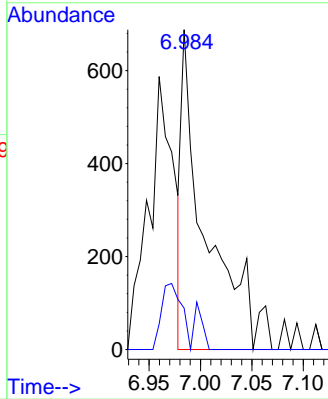


#25  
 2-Butanone  
 Concen: 1.316 ug/l  
 RT: 6.984 min Scan# 847  
 Delta R.T. -0.000 min  
 Lab File: VY013347.D  
 Acq: 19 Apr 2023 15:55

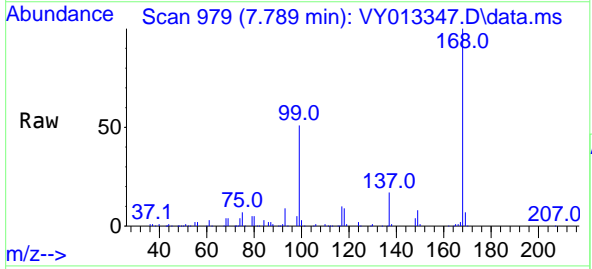
Instrument : MSVOA\_Y  
 ClientSampleId :



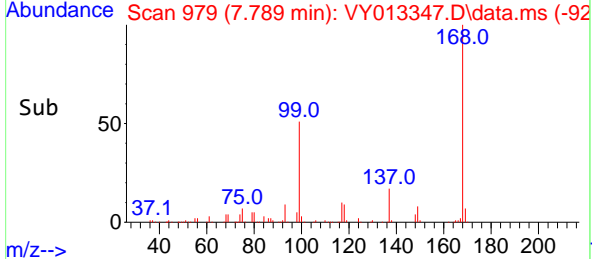
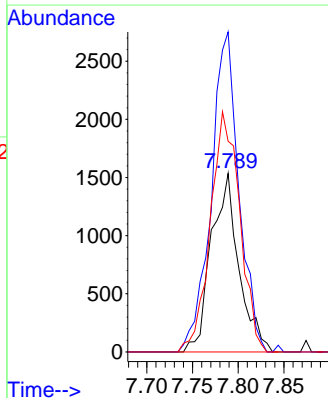
Tgt Ion: 43 Resp: 1124  
 Ion Ratio Lower Upper  
 43 100  
 72 12.9 21.0 31.4#

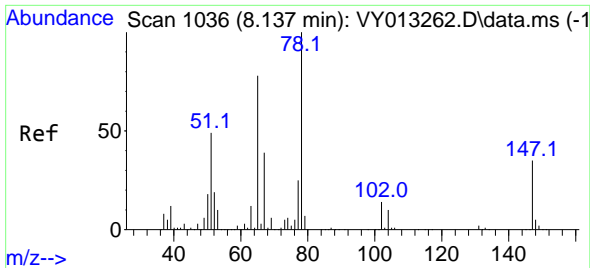


#31  
 Cyclohexane  
 Concen: 1.098 ug/l  
 RT: 7.789 min Scan# 979  
 Delta R.T. 0.006 min  
 Lab File: VY013347.D  
 Acq: 19 Apr 2023 15:55



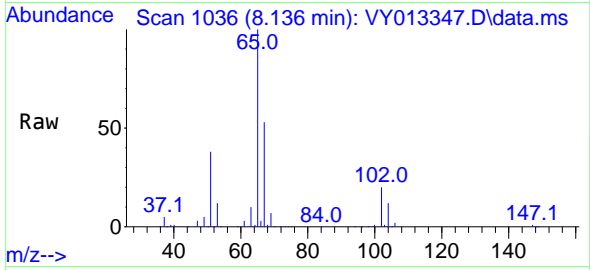
Tgt Ion: 56 Resp: 3221  
 Ion Ratio Lower Upper  
 56 100  
 69 179.2 25.7 38.5#  
 84 118.0 64.3 96.5#



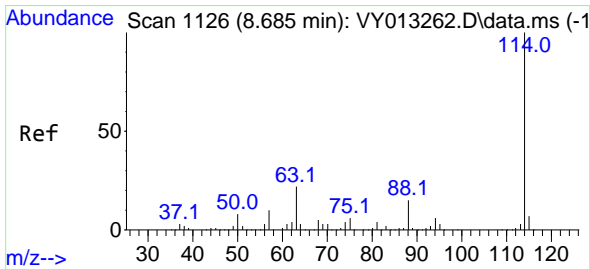
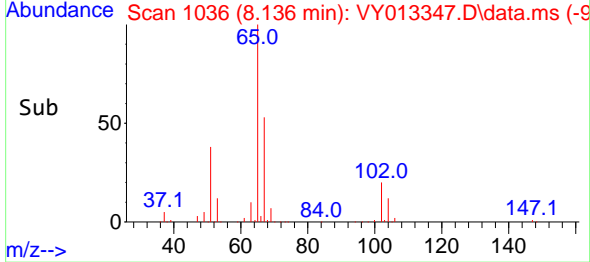
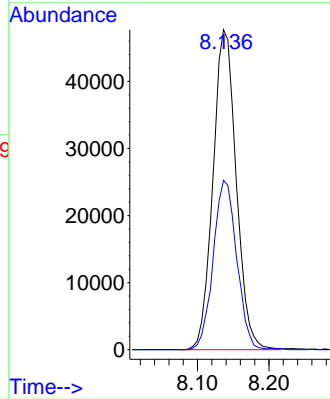


#33  
 1,2-Dichloroethane-d4  
 Concen: 55.465 ug/l  
 RT: 8.136 min Scan# 1036  
 Delta R.T. -0.000 min  
 Lab File: VY013347.D  
 Acq: 19 Apr 2023 15:55

Instrument : MSVOA\_Y  
 ClientSampleId :

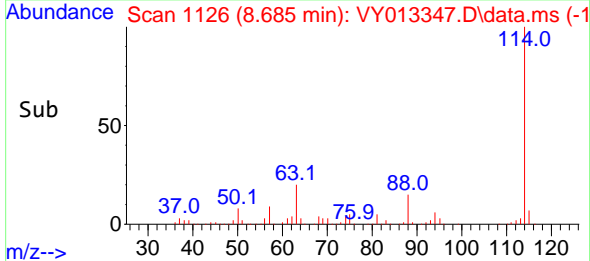
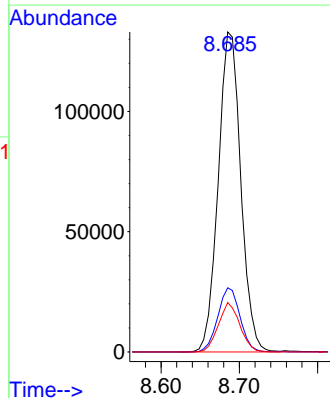
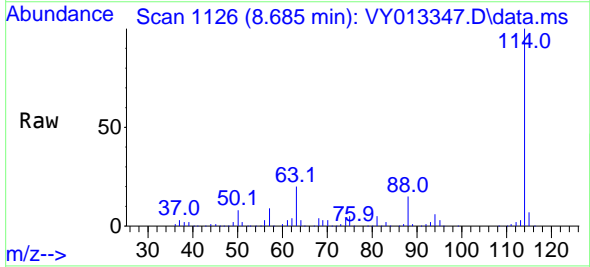


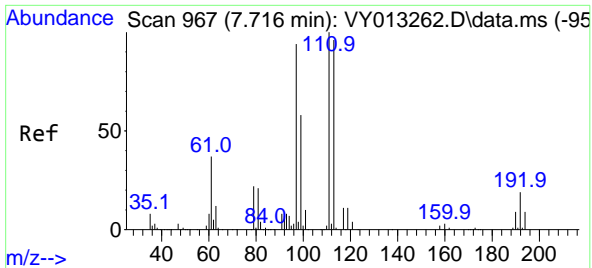
Tgt Ion: 65 Resp: 107580  
 Ion Ratio Lower Upper  
 65 100  
 67 53.3 0.0 104.0



#34  
 1,4-Difluorobenzene  
 Concen: 50.000 ug/l  
 RT: 8.685 min Scan# 1126  
 Delta R.T. -0.000 min  
 Lab File: VY013347.D  
 Acq: 19 Apr 2023 15:55

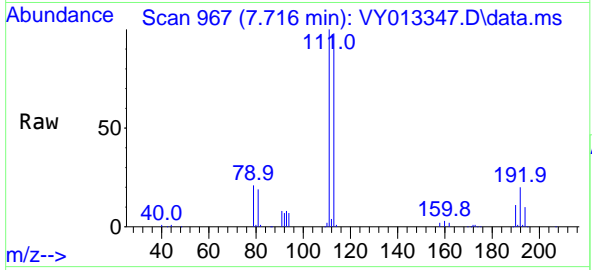
Tgt Ion: 114 Resp: 266469  
 Ion Ratio Lower Upper  
 114 100  
 63 20.0 0.0 37.4  
 88 15.5 0.0 28.6





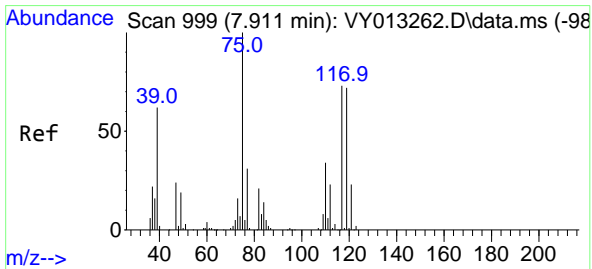
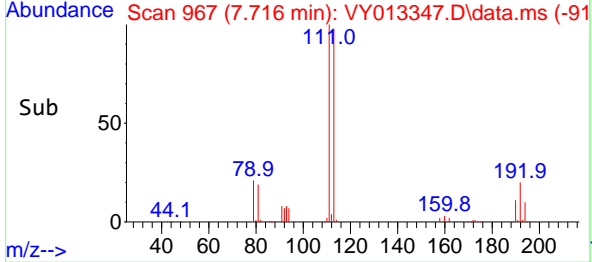
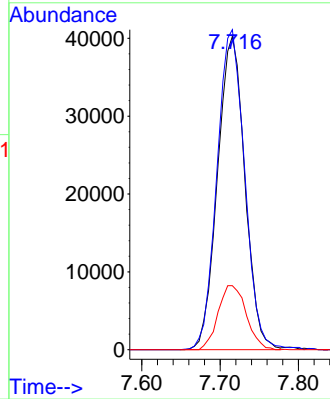
#35  
 Dibromofluoromethane  
 Concen: 56.513 ug/l  
 RT: 7.716 min Scan# 90  
 Delta R.T. -0.000 min  
 Lab File: VY013347.D  
 Acq: 19 Apr 2023 15:55

Instrument :  
 MSVOA\_Y  
 ClientSampleId :



Tgt Ion:113 Resp: 97490

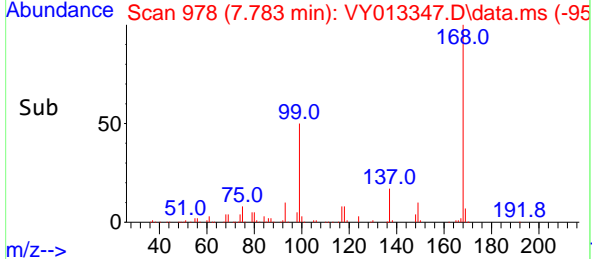
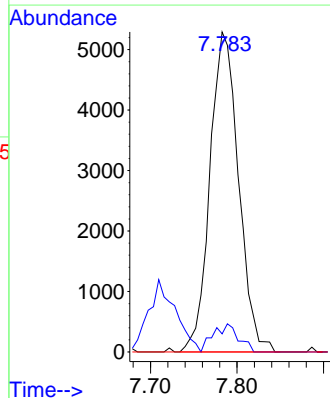
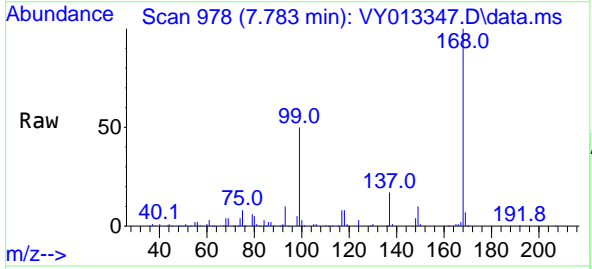
Ion	Ratio	Lower	Upper
113	100		
111	103.8	82.2	123.2
192	21.1	16.8	25.2

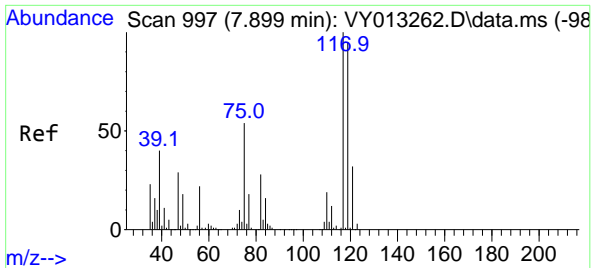


#36  
 1,1-Dichloropropene  
 Concen: 4.647 ug/l  
 RT: 7.783 min Scan# 978  
 Delta R.T. -0.128 min  
 Lab File: VY013347.D  
 Acq: 19 Apr 2023 15:55

Tgt Ion: 75 Resp: 12145

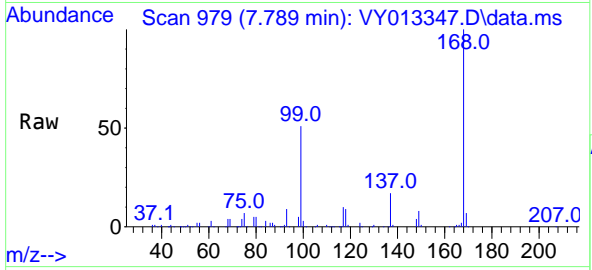
Ion	Ratio	Lower	Upper
75	100		
110	7.7	17.8	53.3#
77	0.0	25.0	37.4#





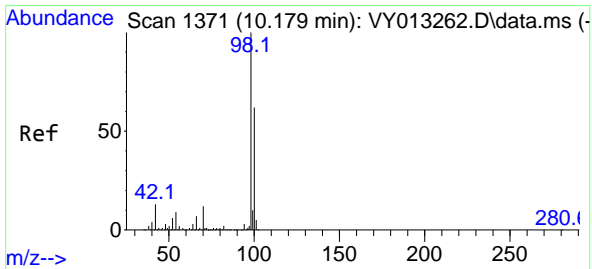
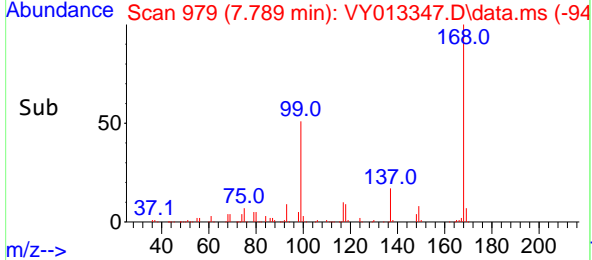
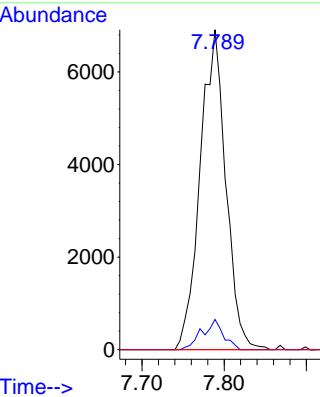
#38  
 Carbon Tetrachloride  
 Concen: 5.189 ug/l  
 RT: 7.789 min Scan# 91  
 Delta R.T. -0.110 min  
 Lab File: VY013347.D  
 Acq: 19 Apr 2023 15:55

Instrument : MSVOA\_Y  
 ClientSampleId :

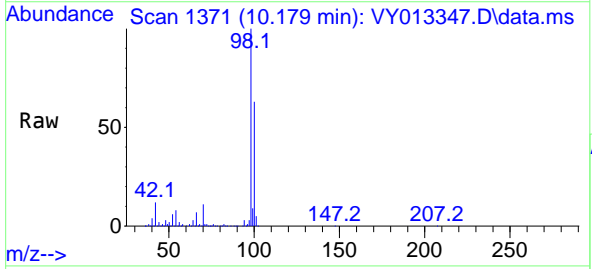


Tgt Ion: 117 Resp: 14995

Ion	Ratio	Lower	Upper
117	100		
119	9.4	77.2	115.8#
121	0.0	24.7	37.1#

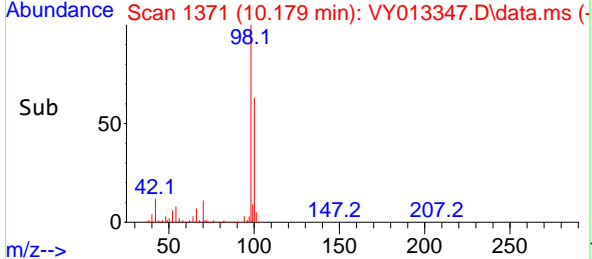
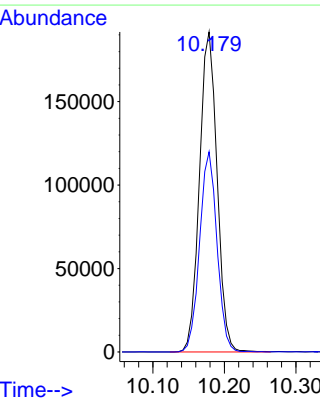


#50  
 Toluene-d8  
 Concen: 51.081 ug/l  
 RT: 10.179 min Scan# 1371  
 Delta R.T. -0.000 min  
 Lab File: VY013347.D  
 Acq: 19 Apr 2023 15:55

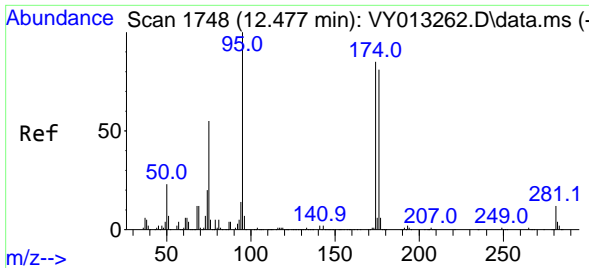


Tgt Ion: 98 Resp: 327999

Ion	Ratio	Lower	Upper
98	100		
100	61.7	50.9	76.3

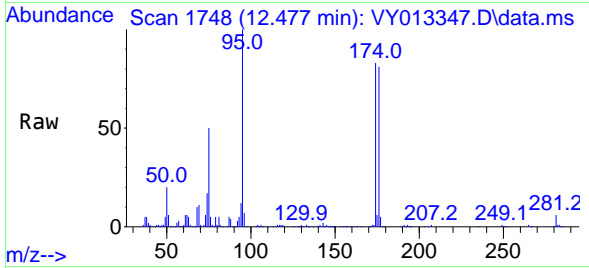




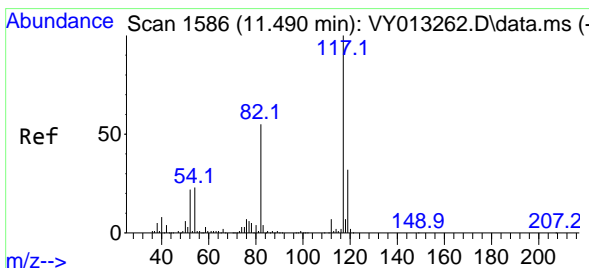
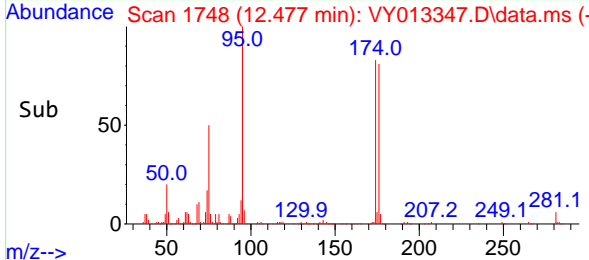
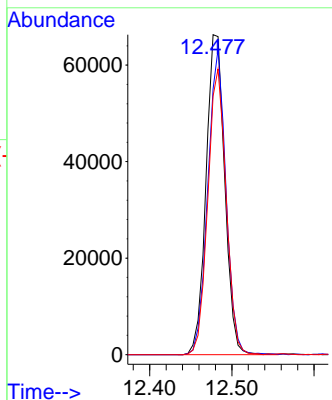


#62  
 4-Bromofluorobenzene  
 Concen: 50.184 ug/l  
 RT: 12.477 min Scan# 11  
 Delta R.T. -0.000 min  
 Lab File: VY013347.D  
 Acq: 19 Apr 2023 15:55

Instrument :  
 MSVOA\_Y  
 ClientSampleId :

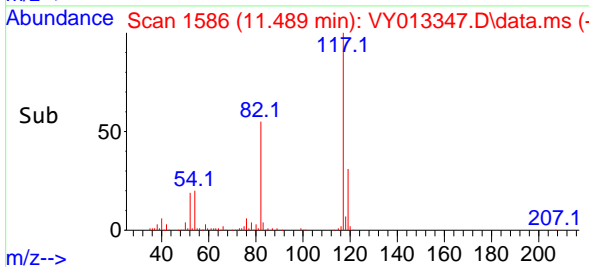
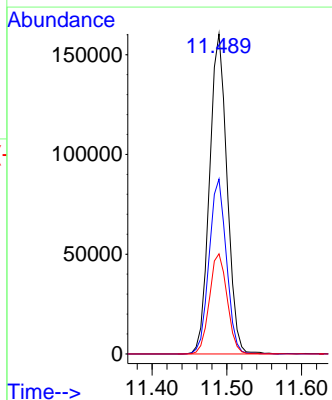
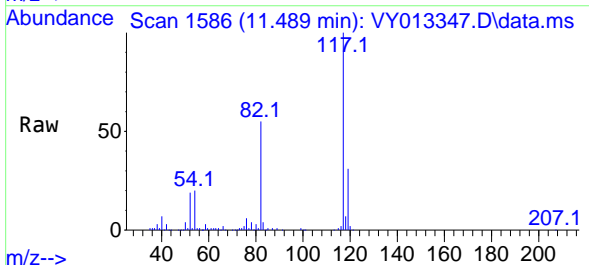


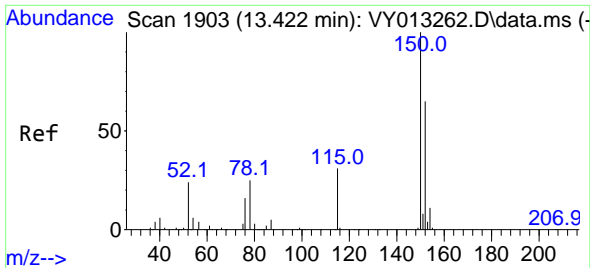
Tgt Ion: 95 Resp: 104700  
 Ion Ratio Lower Upper  
 95 100  
 174 92.8 0.0 176.6  
 176 87.5 0.0 170.2



#63  
 Chlorobenzene-d5  
 Concen: 50.000 ug/l  
 RT: 11.489 min Scan# 1586  
 Delta R.T. -0.000 min  
 Lab File: VY013347.D  
 Acq: 19 Apr 2023 15:55

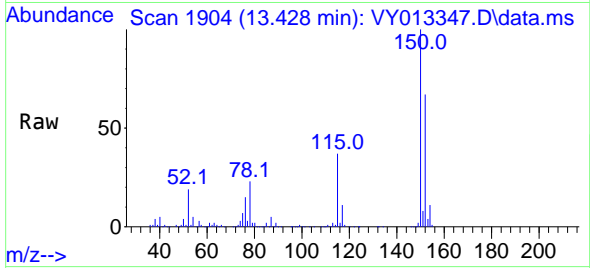
Tgt Ion: 117 Resp: 262167  
 Ion Ratio Lower Upper  
 117 100  
 82 54.6 45.4 68.0  
 119 31.3 25.6 38.4



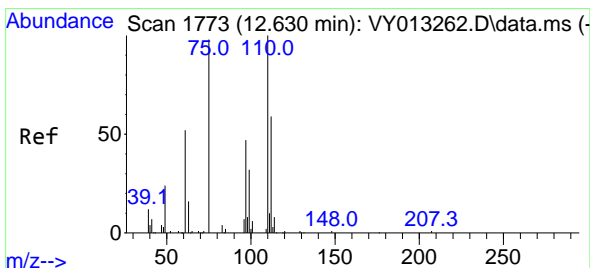
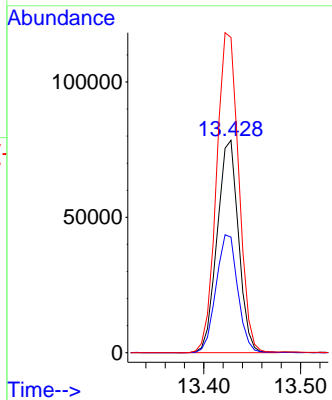
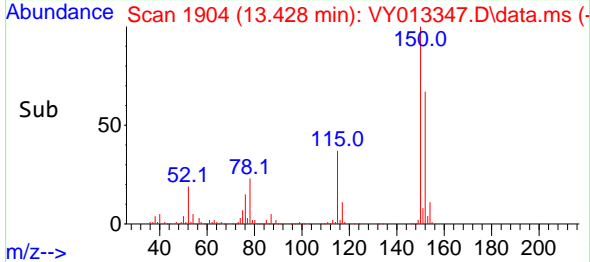


#72  
 1,4-Dichlorobenzene-d4  
 Concen: 50.000 ug/l  
 RT: 13.428 min Scan# 1903  
 Delta R.T. 0.006 min  
 Lab File: VY013347.D  
 Acq: 19 Apr 2023 15:55

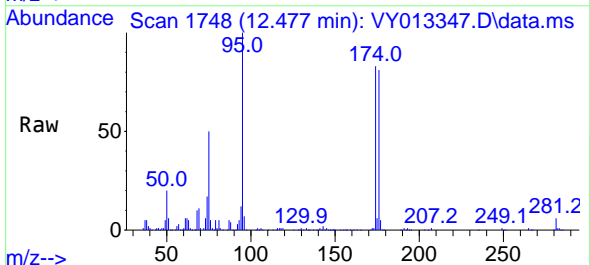
Instrument :  
 MSVOA\_Y  
 ClientSampleId :



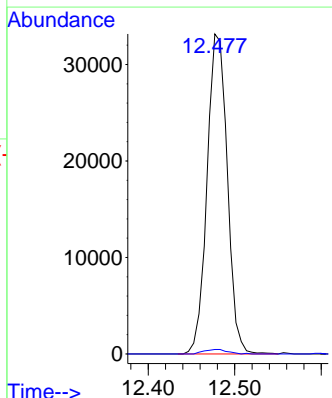
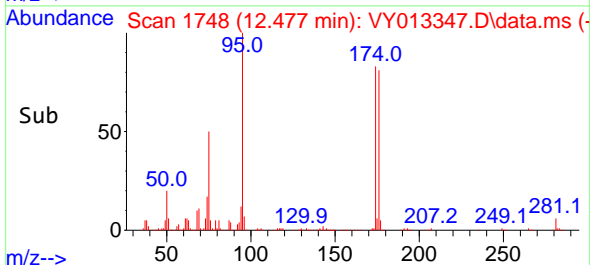
Tgt Ion:152 Resp: 120233  
 Ion Ratio Lower Upper  
 152 100  
 115 56.5 27.1 81.3  
 150 157.0 0.0 347.8

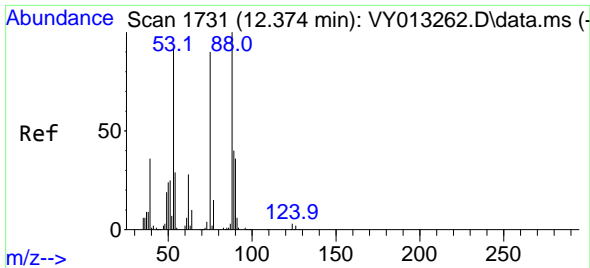


#76  
 1,2,3-Trichloropropane  
 Concen: 35.956 ug/l  
 RT: 12.477 min Scan# 1748  
 Delta R.T. -0.153 min  
 Lab File: VY013347.D  
 Acq: 19 Apr 2023 15:55



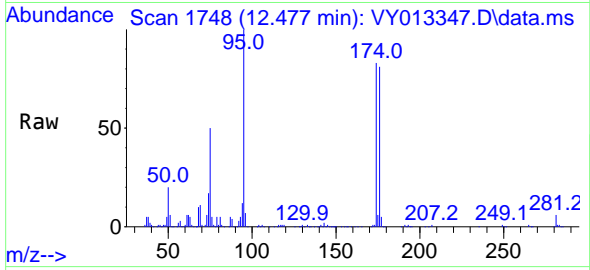
Tgt Ion: 75 Resp: 53869  
 Ion Ratio Lower Upper  
 75 100  
 77 1.7 0.0 0.0#



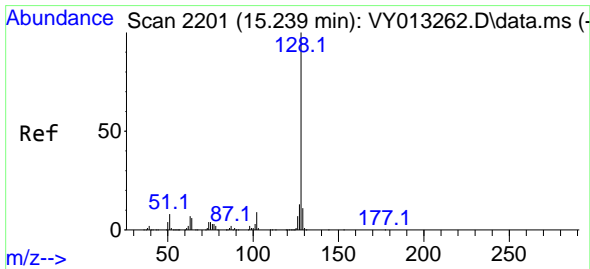
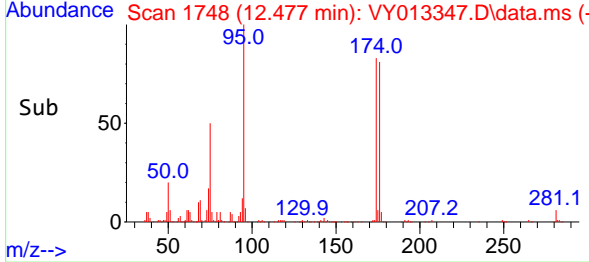
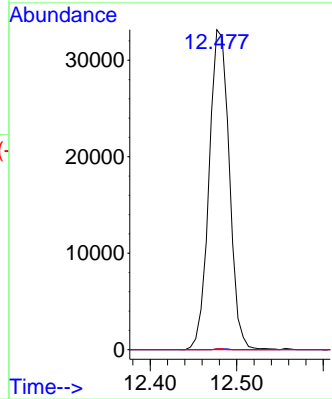


#81  
 trans-1,4-Dichloro-2-butene  
 Concen: 74.626 ug/l  
 RT: 12.477 min Scan# 11  
 Delta R.T. 0.103 min  
 Lab File: VY013347.D  
 Acq: 19 Apr 2023 15:55

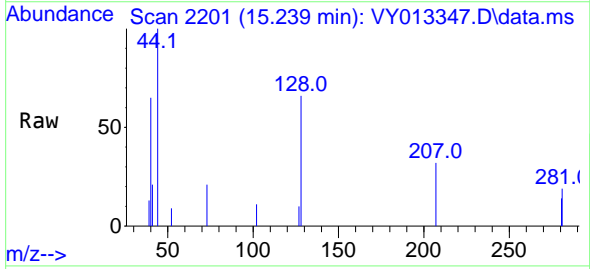
Instrument :  
 MSVOA\_Y  
 ClientSampleId :



Tgt Ion: 75 Resp: 53869  
 Ion Ratio Lower Upper  
 75 100  
 53 0.2 73.4 110.0#  
 89 0.1 36.6 55.0#



#95  
 Naphthalene  
 Concen: 3.323 ug/l  
 RT: 15.239 min Scan# 2201  
 Delta R.T. -0.000 min  
 Lab File: VY013347.D  
 Acq: 19 Apr 2023 15:55



Tgt Ion:128 Resp: 669  
 Ion Ratio Lower Upper  
 128 100  
 127 13.6 10.3 15.5  
 129 0.0 8.6 13.0#

